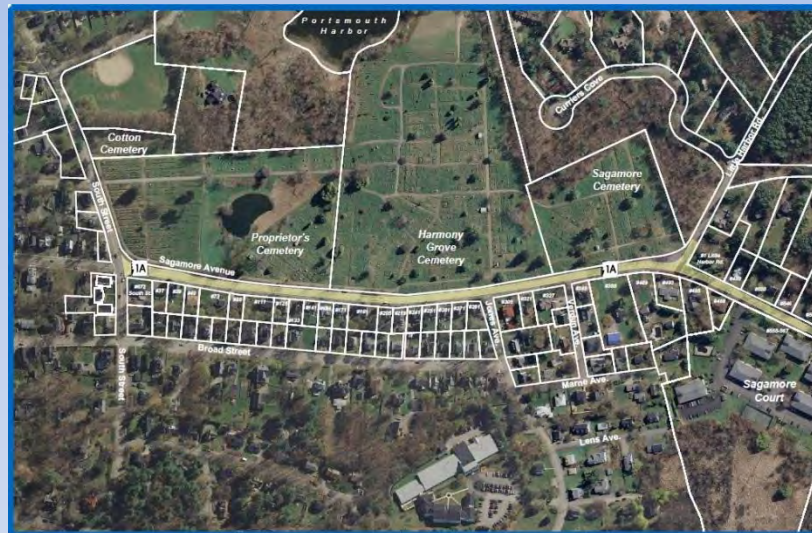


Sagamore Avenue Reconstruction Project



Pre-Construction Meeting on Sagamore Avenue Reconstruction Project – Phase I

July 31, 2014

Levenson Community Room – Portsmouth Public Library

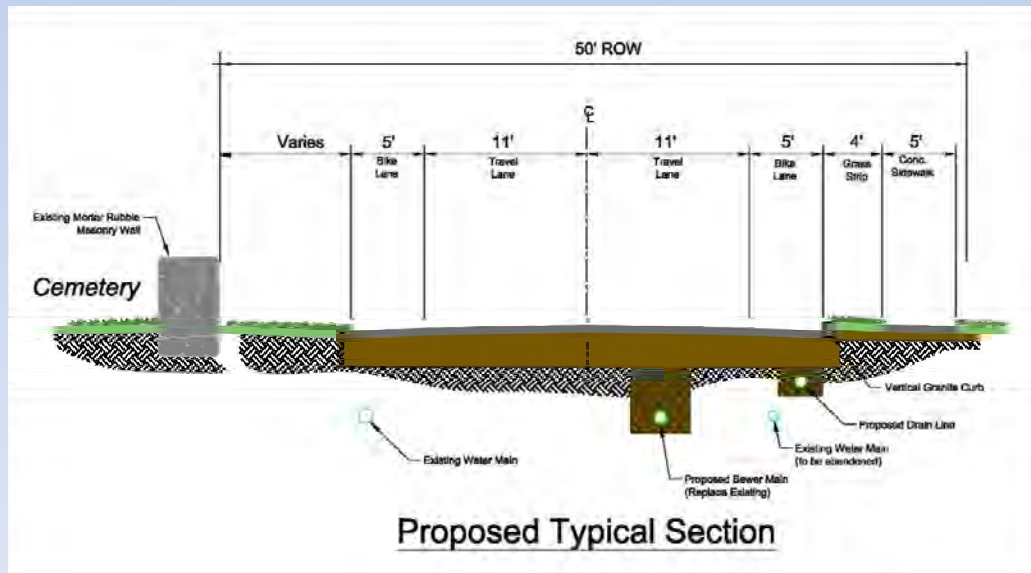
Project Team Introductions

- City of Portsmouth
 - Terry Desmarais, P.E., City Water & Sewer Engineer
 - Tom Richter, City Project Manager
- Contractor: John H. Lyman & Sons, Inc.
 - Jim Lyman, President & Project Manager
 - Mark Sutherland, Field Supervisor
- Engineer: CMA Engineers, Inc.
 - Jack Kareckas, CET, Resident Project Representative
 - Phil Corbett, PE, Project Engineer
 - William Straub, Project Manager



Project Overview

- Sagamore Ave – South St. to Shaw Rd (2,500 LF)
- “Complete Street”
 - New Concrete Sidewalk
 - 5-foot bike lanes on both sides of the road
 - 11-foot travel lanes

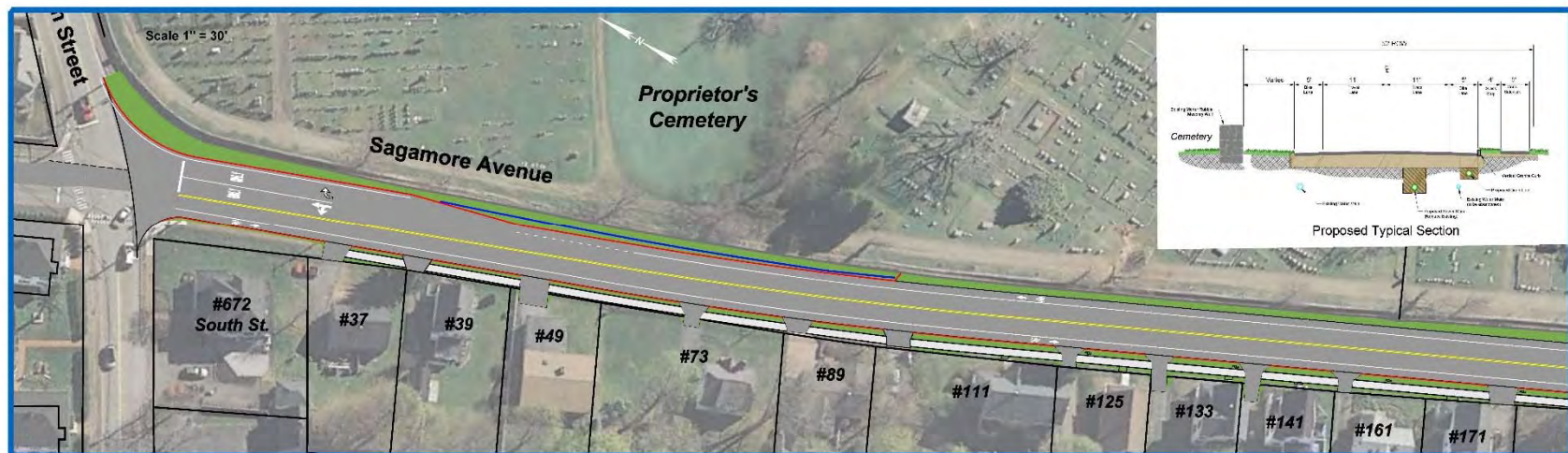


Sagamore Avenue Reconstruction Project



Project Overview

- Pavement, Streetscape and Landscape improvements
- Improve Drainage/Stormwater Treatment
- Reconfigure Little Harbor Rd Intersection
- Water and Sewer upgrades
- Project independent of Cemetery Wall Repairs



Sagamore Avenue Reconstruction Project



CMA
ENGINEERS

Project Overview



Sagamore Avenue Reconstruction Project



CMA
ENGINEERS

Construction Schedule

- Unutil Gas Main Replacement – Complete to LHR
- PNSH Utility Pole Relocation
- **Lyman Construction Start =
Monday, August 4, 2014**
- Work hours – 7am to 6pm, M-F
- Work to end of construction season 2014
(December)
- Complete Construction in spring 2015



Construction Schedule/Sequence

- Construction undertaken this season (2014):
 - Utilities (sewer/water services)
 - Drainage
 - Roadway grading
 - Curbing
 - Base pavement



Construction Schedule/Sequence

- Remaining work for spring (2015):
 - Concrete Sidewalk
 - Landscaping
 - Final paving
 - Roadway striping
 - Final site cleanup



Initial Construction – what to expect

- Pavement reclaim over sewer main
- Sewer construction first – from low to high (South St to Little Harbor Rd)
 - Requires closure of South Street intersection for one week/detours
 - Requires coordination with residents for access into basements for sewer service location
 - May require ledge removal
- Water services
 - Requires water shutoffs



Traffic Control

- South St intersection closed during sewer/drain work in intersection
- One-way traffic through construction zone on Sagamore
 - Emergency vehicle accessible at all times
 - Signage & flaggers



Sewer/Drain Service Locations

- Sewer service video inspected from basement
- Notify us of known residential drains (foundation, sump pump, etc.)
- **Contact: Tom Richter**
 - (603) 766-1412
 - tcrichter@cityofportsmouth.com



Resident Coordination

- Notify in advance: water shutdowns, blocked driveways, service connections
- Resident concerns during construction
- **First point of contact: Jack Kareckas, Resident Project Representative (RPR)**
 - (603) 828-6170
 - jkareckas@cmaengineers.com
- Email/Website project updates



Questions & Comments

