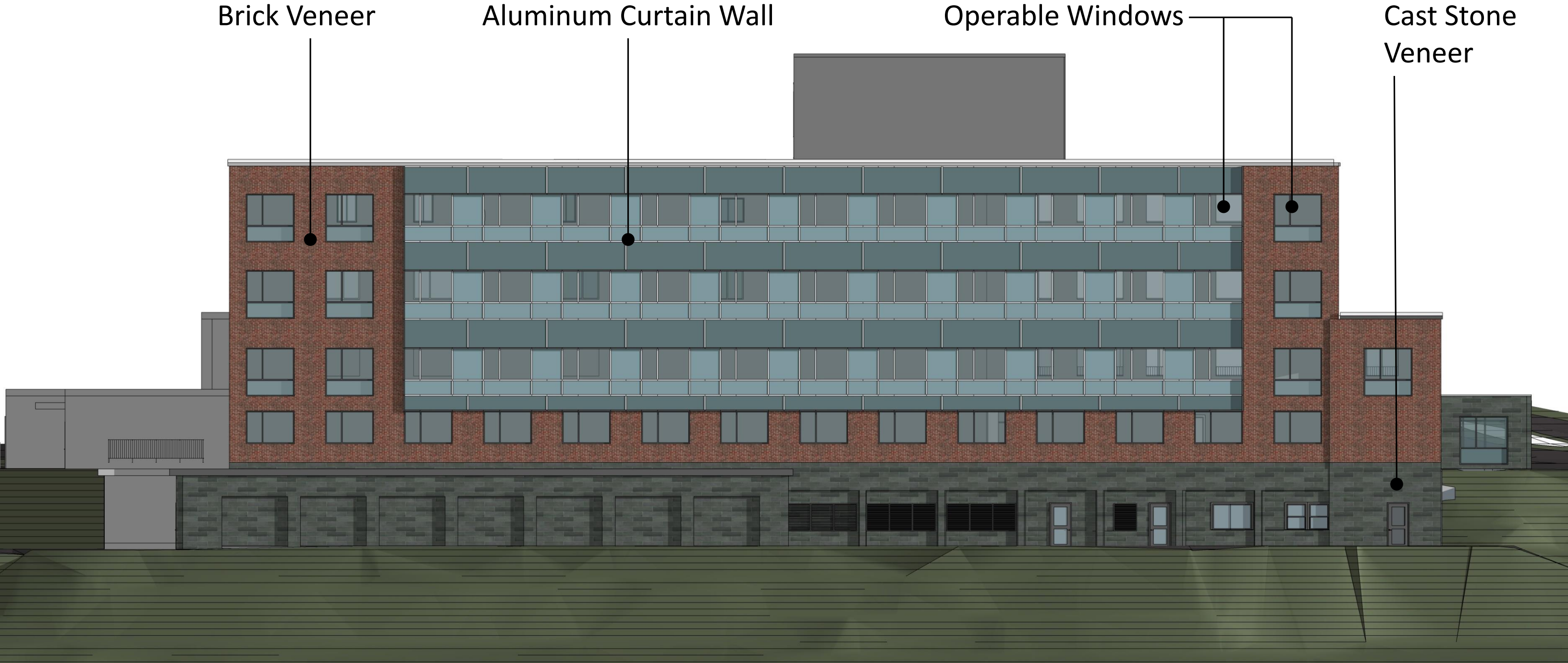


OPTION B – CURTAIN WALL & MASONRY



OPTION B – CURTAIN WALL & MASONRY

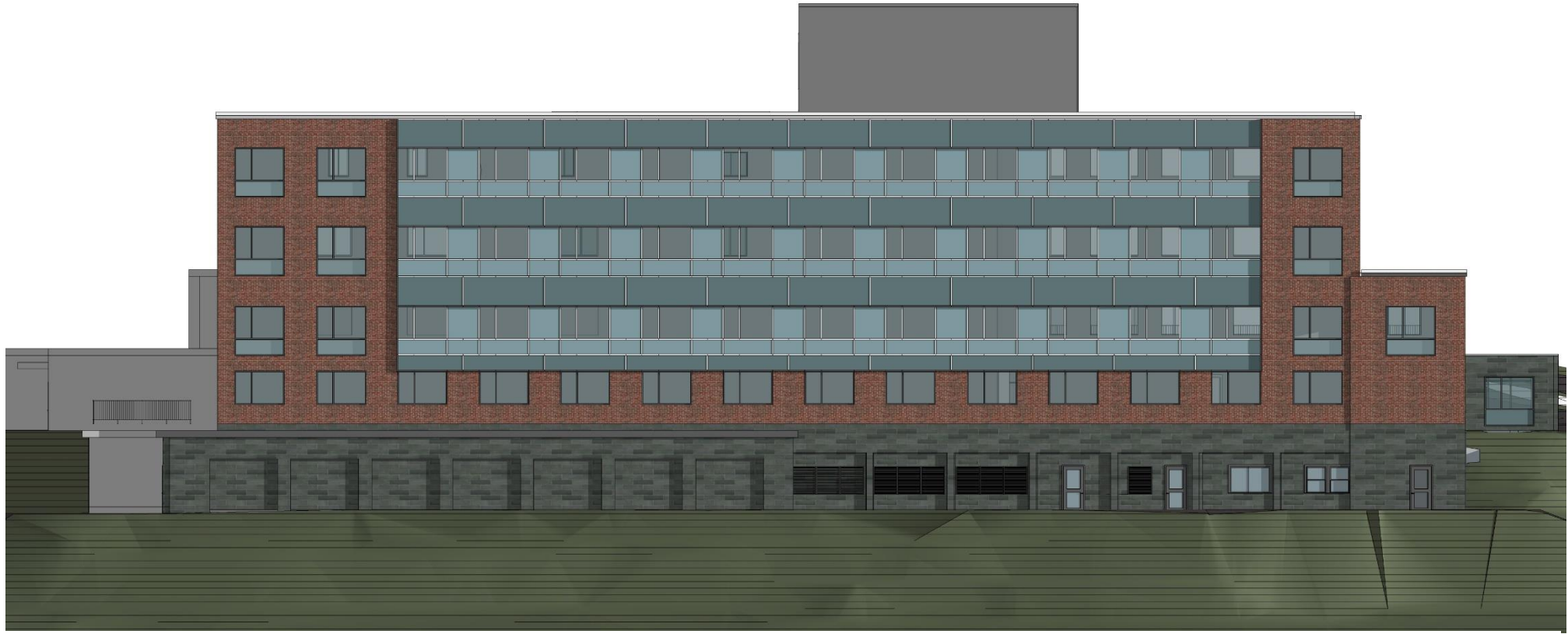


Portsmouth City Hall North Façade Replacement - Design Options

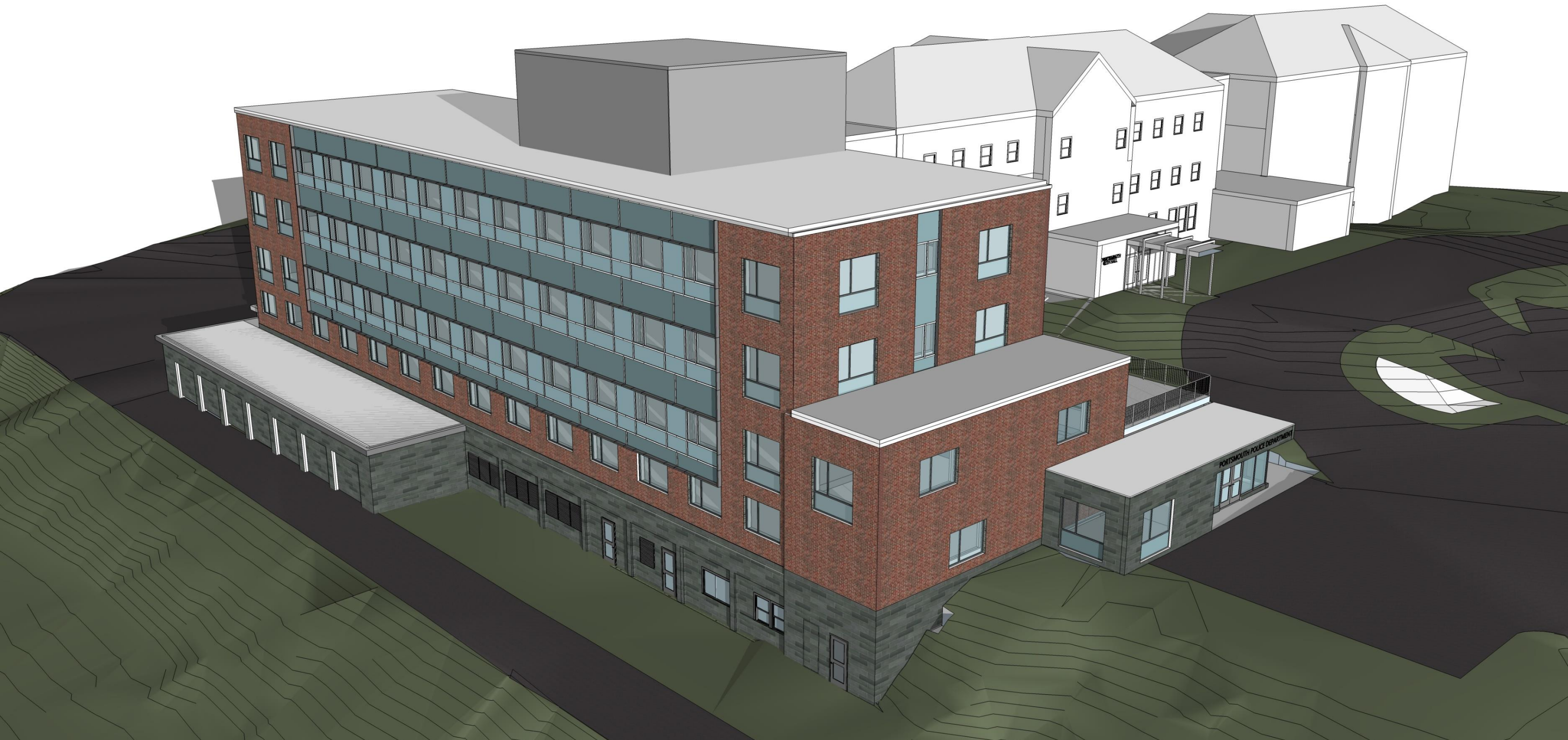
8/15/2016

- Mix of vision glass and one or more colors of spandrel (non-vision) glass
- Areas of spandrel allow for adequate insulation behind curtain wall
- Cast Stone Veneer Base wraps corner facing Junkins Avenue
- Updated Police Station entrance matching cast stone base

OPTION B – CURTAIN WALL & MASONRY



OPTION B – CURTAIN WALL & MASONRY



Portsmouth City Hall North Façade Replacement - Design Options

8/15/2016

LAVALLEE BRENSINGER ARCHITECTS

- Mix of vision glass and one or more colors of spandrel (non-vision) glass
- Areas of spandrel allow for adequate insulation behind curtain wall
- Cast Stone Veneer Base wraps corner facing Junkins Avenue
- Updated Police Station entrance matching cast stone base

OPTION B – CURTAIN WALL & MASONRY



Portsmouth City Hall North Façade Replacement - Design Options

8/15/2016

LAVALLEE | BRENSINGER ARCHITECTS

- Mix of vision glass and one or more colors of spandrel (non-vision) glass
- Areas of spandrel allow for adequate insulation behind curtain wall
- Cast Stone Veneer Base wraps corner facing Junkins Avenue
- Updated Police Station entrance matching cast stone base