



Manage our Resources



Explore Innovative Solutions



Protect our Environment



Preserve our Community

## CITY OF PORTSMOUTH WASTEWATER DIVISION

# TRAFFIC AND CONSTRUCTION MITIGATION FOR PEIRCE ISLAND WASTEWATER TREATMENT FACILITY UPGRADE

RECREATION BOARD AND PEIRCE ISLAND COMMITTEE JOINT  
MEETING  
MAY 26, 2016

# Topics for Discussion

---

1. Project Information & Status
2. Peirce Island Temporary Staging Areas & Contractor Restrictions
3. Independent Safety Review
4. Parking Mitigation
5. Archaeological Investigations
6. Off Leash Dog Area Plans
7. Site Changes & Improvements
8. Mitigation Measures
9. Peirce Island Bridge Repairs
10. Communication Plan



# Project Information & Status

---

- Major Upgrade of Peirce Island WWTF Mandated by EPA Consent Decree
- Design Complete
- Out to Bid with Barge Bid Alternates
- Construction Between Sept 2016 and Sept 2020





# Peirce Island Temporary Staging Areas



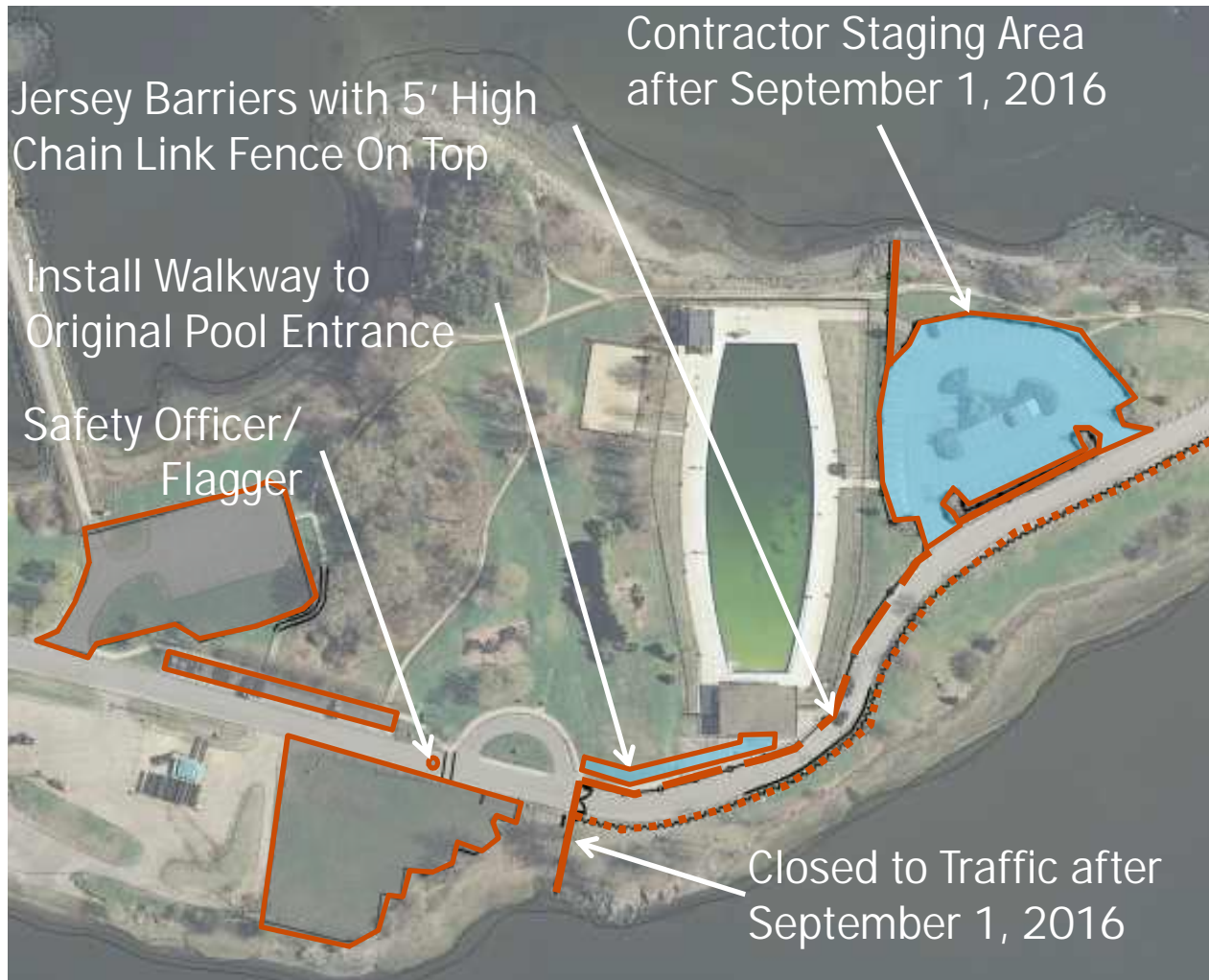
# Restrictions on Contractor's Work

---

- Base Hours of Operation are 7AM to 6 PM
- 2 Week Notice Required for Work Past 3:30 PM, Monday through Friday
- Work Outside of Base Hours with City Approval
- No Work on City Holidays
- Friday Restrictions Prior to the Tall Ships and Fairy House Tours
- Large Vehicle Deliveries Only Allowed During Nights/Early Mornings
  - Incoming to site Midnight to 8 AM
  - Outgoing from site Midnight to 9AM Sept-May, 8:30AM June-Aug



# Peirce Island Pool Access



## Pool Staging Area Restrictions

- Provide 8-ft High Lined Chain Link Fence with Screening Fabric
- No Dust Producing Activities
- Provide Access to Rear Entrance to Pool





# Construction Safety Consultant

---

- Construction Safety Consultant Reviewing Plans
- Independent Third Party Review
- Additional Pedestrian Safety Related Mitigation Measures for City Consideration in Near Future

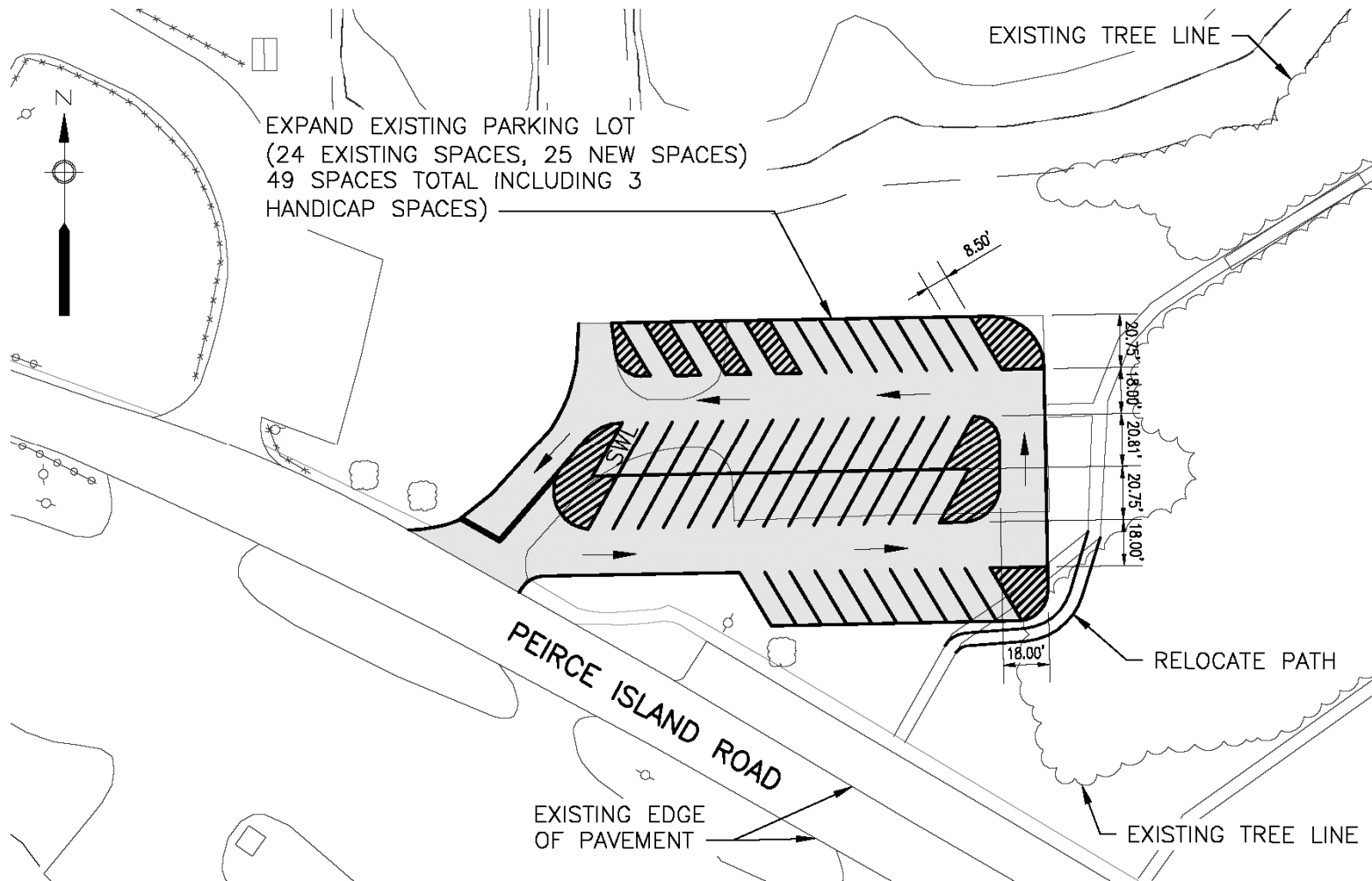


# Peirce Island Parking Mitigation

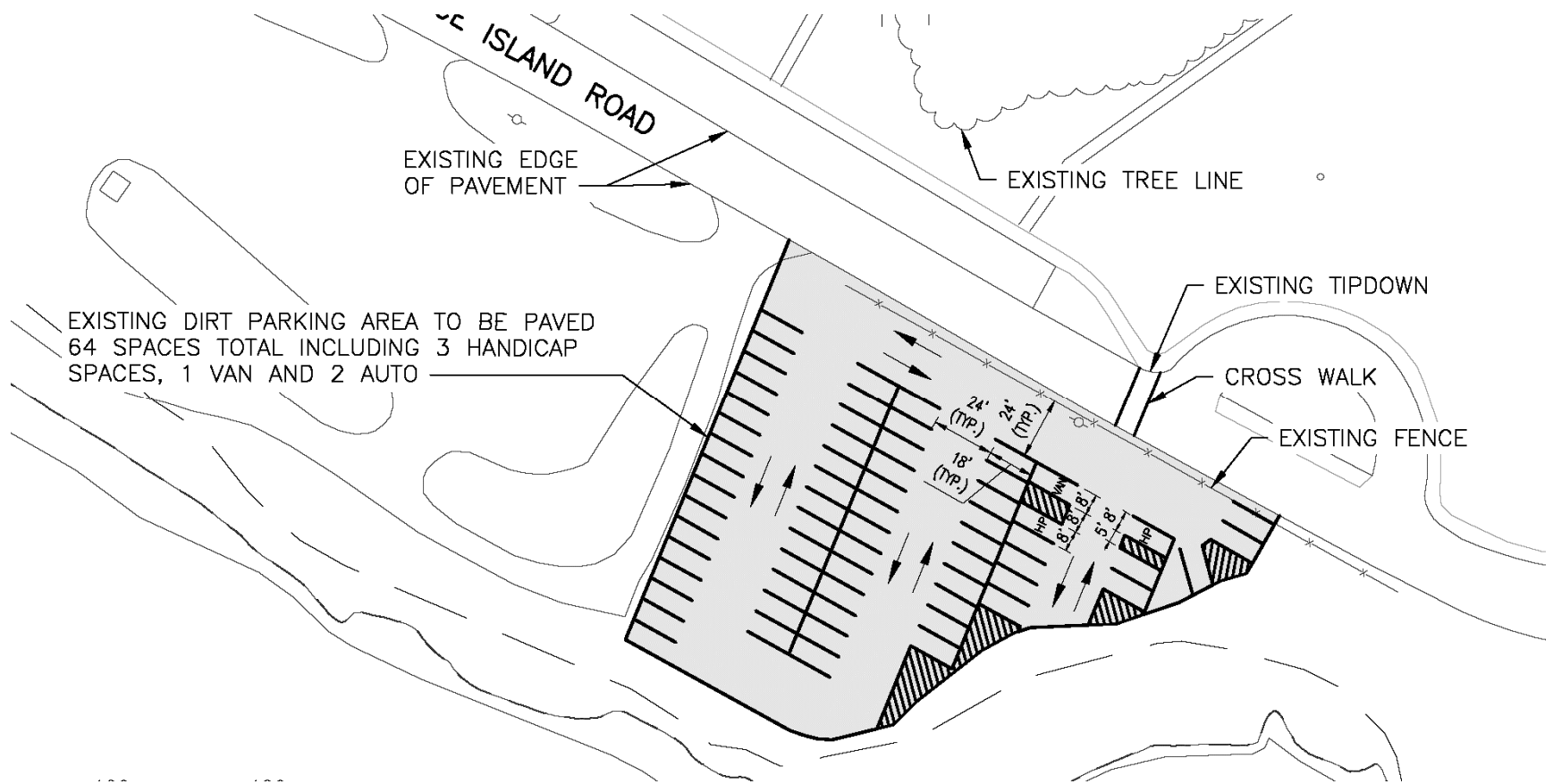




# Parking Mitigation – Expand Four Tree Island Parking Area



# Parking Mitigation – Expand Boat Ramp Parking Area



# Parking Space Breakdown

---

Location	Existing	Proposed
Snow Dump Area	Approx 82	0
Pool Parking Lot	68	0
PI Rd On-Street Perpendicular Parking	23	23 (Nights After 6PM & Weekends)
Four Tree Island Lot	24	49
Lot Adjacent to Boat Ramp	Approx 40	64
Total	Approx 237	136

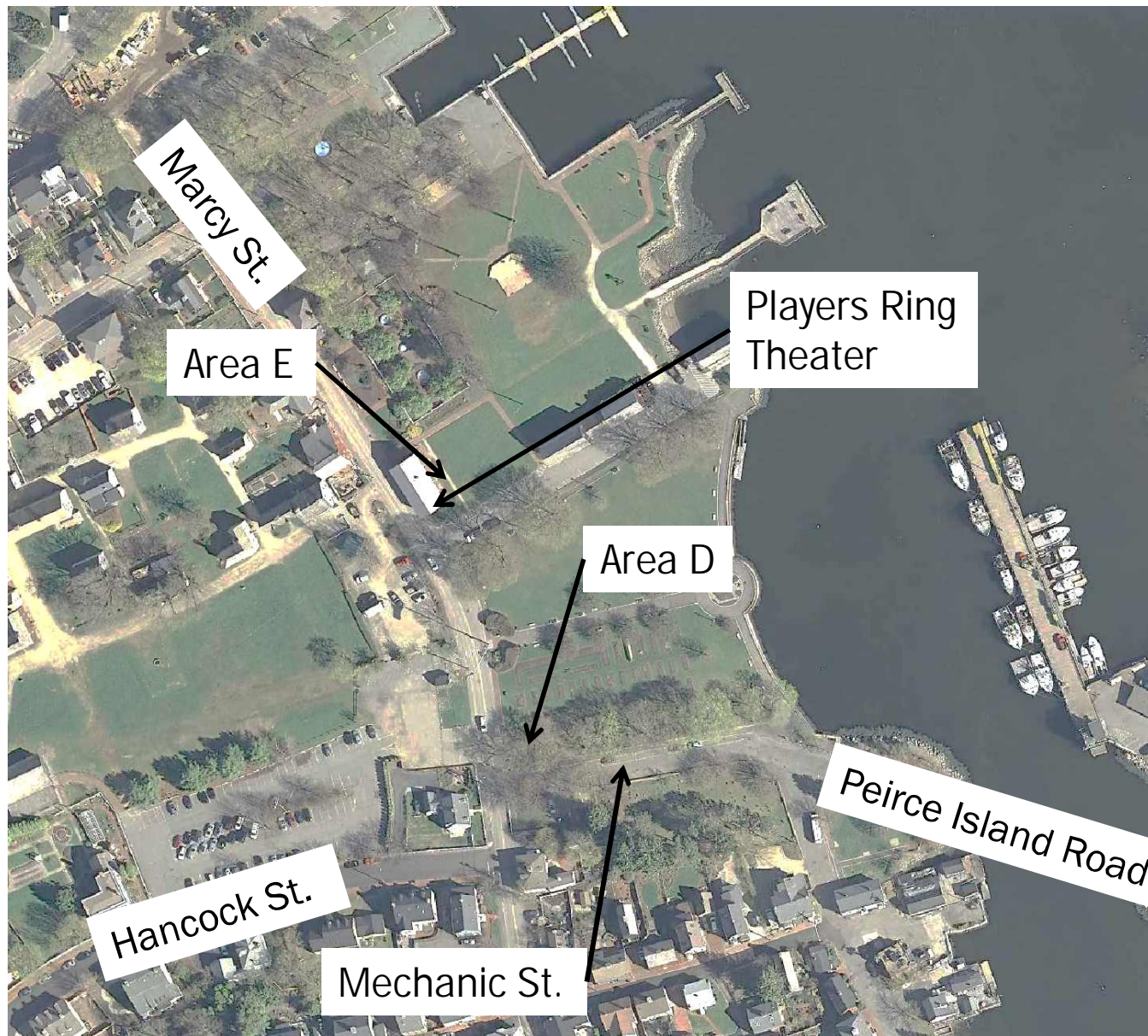




# Archaeological Investigations on Peirce Island

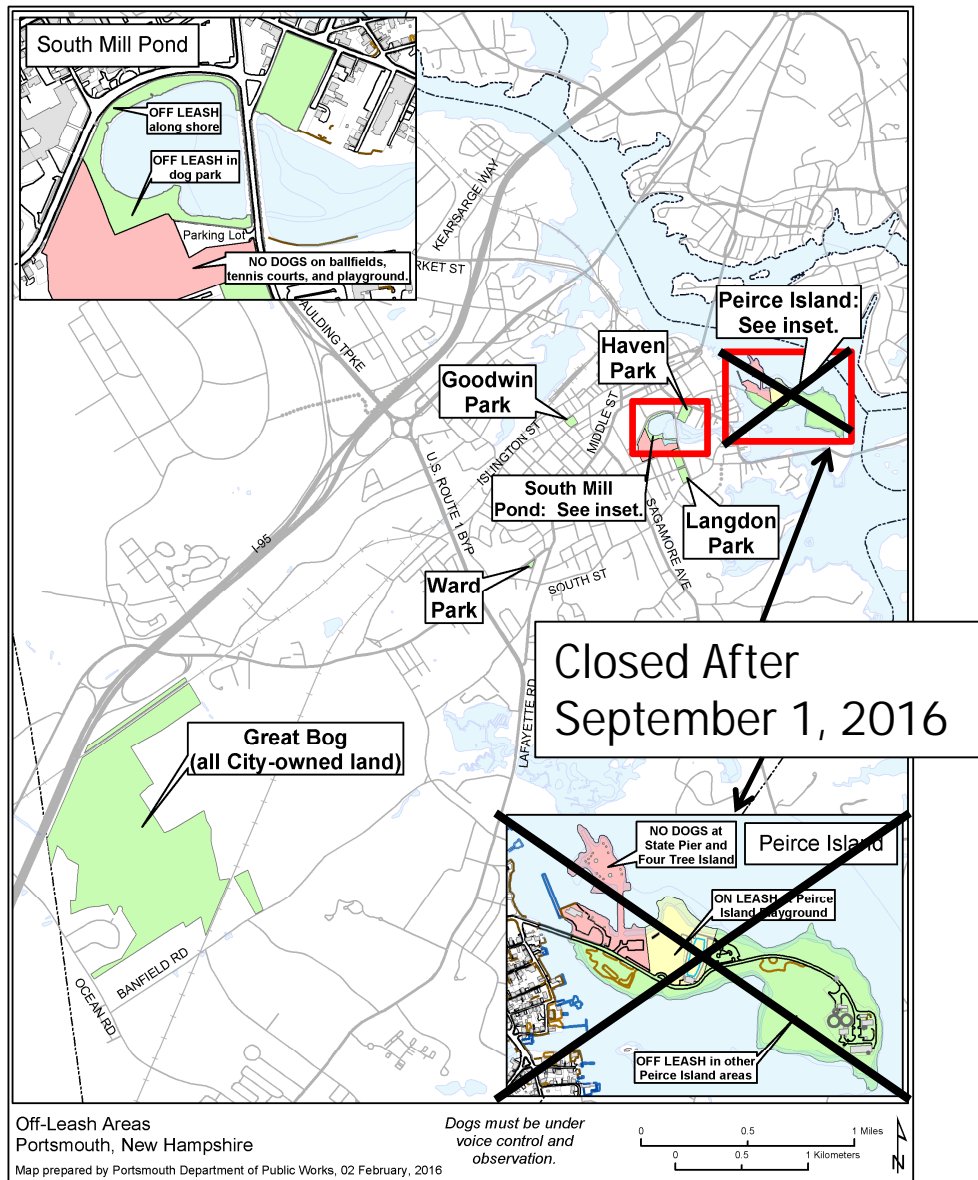


# Archaeological Investigations off Peirce Island





# Off Leash Dog Area Plans





## Site Changes and Improvements

---

- Presented to the Mayor's Blue Ribbon Committee on Trees and Greenery on May 11, 2016
- Trees to be Removed will be Flagged
- Separate Meeting and Presentation will be Held Prior to Public Hearing
- Trail Improvements Can Be Coordinated During Construction Timeframe (4 Years)





# Trees To Be Planted

Qty.	Botanical Name	Common Name	Installation Size
9	Juniperus Virginiana	Red Cedar Juniper	5 – 6 ft.
20	Juniperus Virginiana	Red Cedar Juniper	8 – 10 ft.
14	Picea Glauca	White Spruce	6 – 7 ft.
15	Picea Glauca	White Spruce	10 – 12 ft.
3	Pinus Strobus	White Pine	7 – 8 ft.
6	Pinus Strobus	White Pine	12 – 14 ft.
4	Amelanchier Laevis	Allegheny Serviceberry	2 – 2.5" Cal.
71	Total		

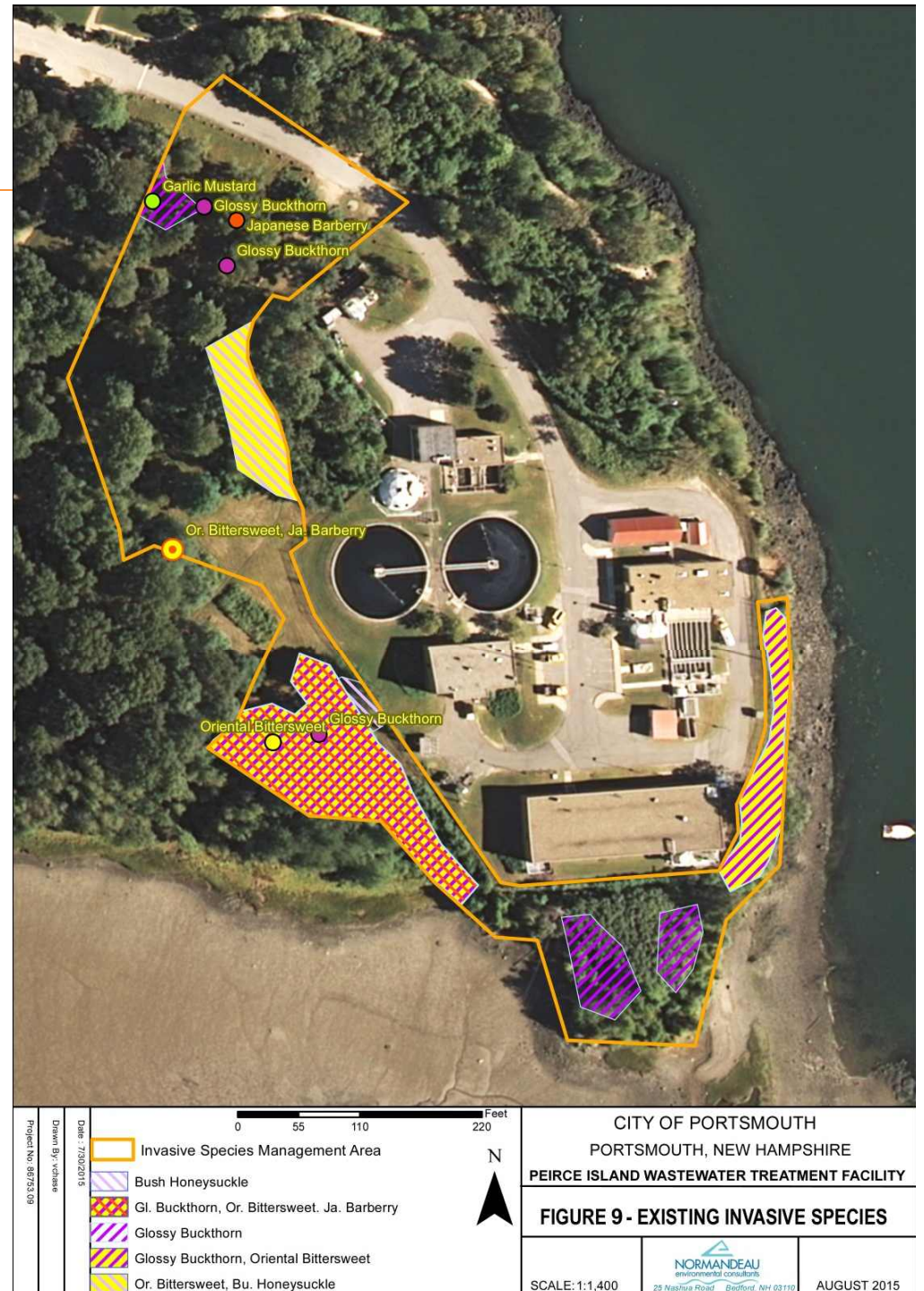
Not including 10 trees to be replaced in kind at pool parking lot & off-leash dog area





# Invasive Species Management

- Contractor to Control Invasive Species
- Specified Areas
- During Construction
- 1 Year Following Construction



# Summary of Potential Mitigation Measures

---

- Add Bid Alternates for Barging
- Possible Relocation of Snow Dump
- Add Additional Parking at Four Tree Island Lot
- Add Additional Parking Adjacent to the Boat Ramp Lot
- Relocate the Pool Entrance
- Continue to Investigate Options for Dog Walking Area
- Contractor Cannot Work During Specific Events
- Continue to Adjust as Needed During Construction



# Peirce Island Road Bridge

---

- Constructed 1958
- Typical Lifespan 50 Years
- Plan for Replacement
- Could be Eligible for NHDOT Municipal Bridge Aid Program with 80% Grant Funding
- Potential Replacement Cost \$7M





# Peirce Island Road Bridge

---

- Deck Maintenance Project
  - Extend Life to Take Advantage of DOT Funding
  - Avoid Repairs During WWTF Construction
  - Repair Mechanic Street Pump Station Force Main
- Cost : \$414,000
- Schedule:
  - Late May through Late September



# Peirce Island Road Bridge – Traffic Details

---

- Phase 1 and 2 (June, July, Aug)
  - Temporary Traffic Signal on Both Sides of Bridge
  - One Way Alternating Traffic
  - 10-ft Wide Lane Width
  - Parking Restriction Along Mechanic Street
- Miscellaneous (Sept)
  - Intermittent One Way Alternating Traffic
  - No Lane Width Restriction
- Pedestrian Access Only Restricted on Limited Basis for Repairs of the Pedestrian Walkway



# Communication Plan

---

- **Public Meetings**

- Quarterly Council Meetings
- Monthly Public Meetings

- **Media**

- Press Releases
- Quarterly Newsletter
- Email Notifications

- **Social Media**

- Twitter

- **Website**

- Construction Schedules
- Construction Plans
- Traffic Estimates
- Webcam





# Questions and Answers

