

# City of Portsmouth



## Downtown Solid Waste & Recycling Curbside Collection

June 23<sup>rd</sup>, 2016

City of Portsmouth  
Department of Public Works  
680 Peverly Hill Road  
Portsmouth, NH 03801  
603-427-1530  
[www.cityofportsmouth.com](http://www.cityofportsmouth.com)



# Downtown Solid Waste & Recycling Curbside Collection

- Why update the Solid Waste Ordinance?
- Portsmouth DPW's curbside collection services
- History of downtown business district collection
- Current downtown collection challenges
- Public input on downtown collection solutions



# Solid Waste Ordinance Update

- Revision of the ordinance fall 2016
- Last updated in 2003
- Update the maximum weight and volume of acceptable curbside containers
- Review solid waste and recycling volume limits
- Modernize the definitions classifying waste and how they are handled
- **Consider adjustment of Downtown Business District curbside collection hours**

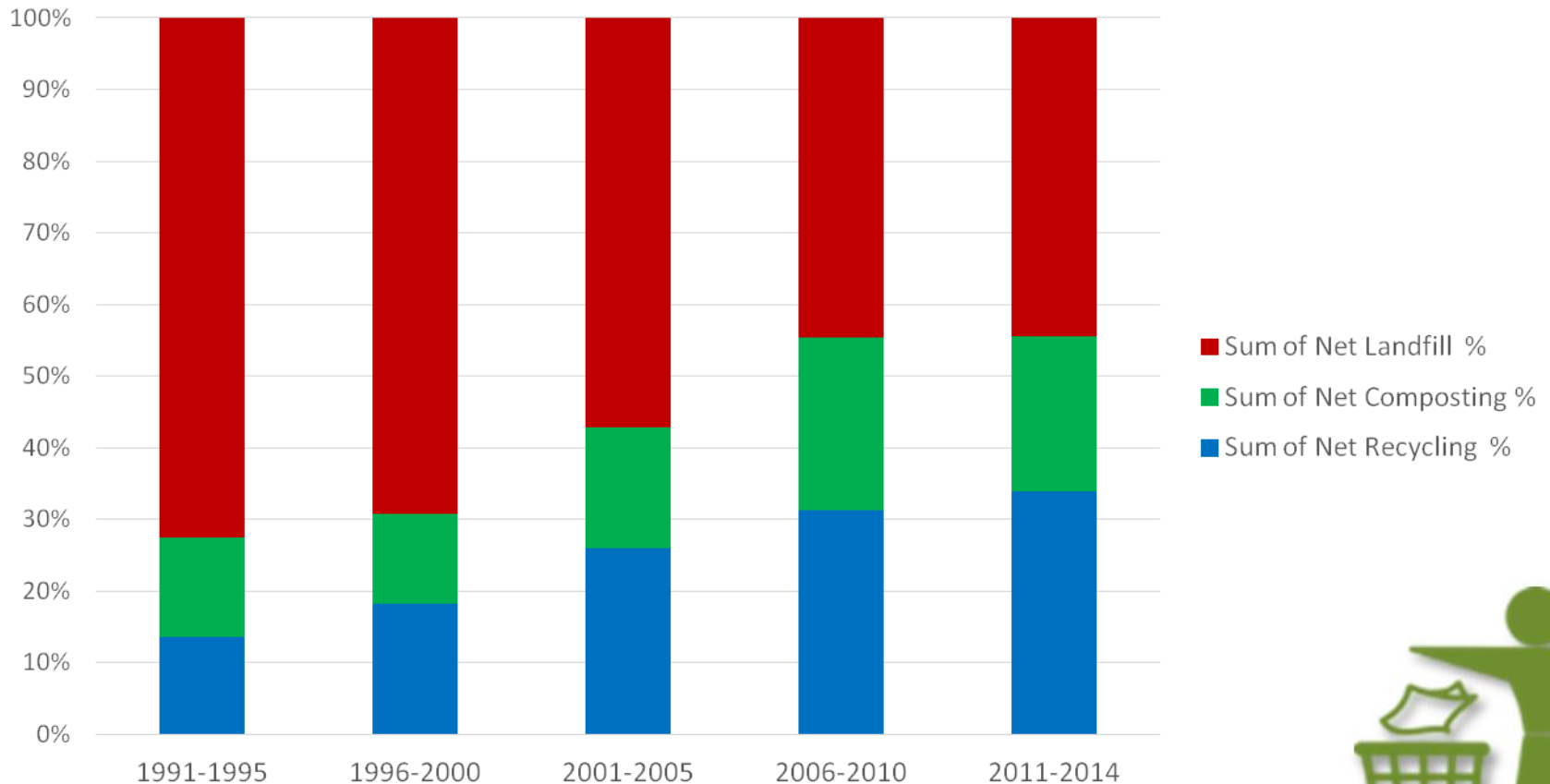


# DPW Solid Waste & Recycling Program Components



# Portsmouth Recycling Success

Five year average diversion rate over time



# DPW Recycling & Solid Waste Program Components

1. **Collection** of waste and recyclables by the DPW
  - Recycling Center drop off collection
  - Residential curbside collection of waste and recyclables
  - Downtown curbside collection of waste and recyclables
2. **Transportation** of waste and recyclables by the DPW
3. **Processing and Disposal** of waste and recyclables by outside vendors



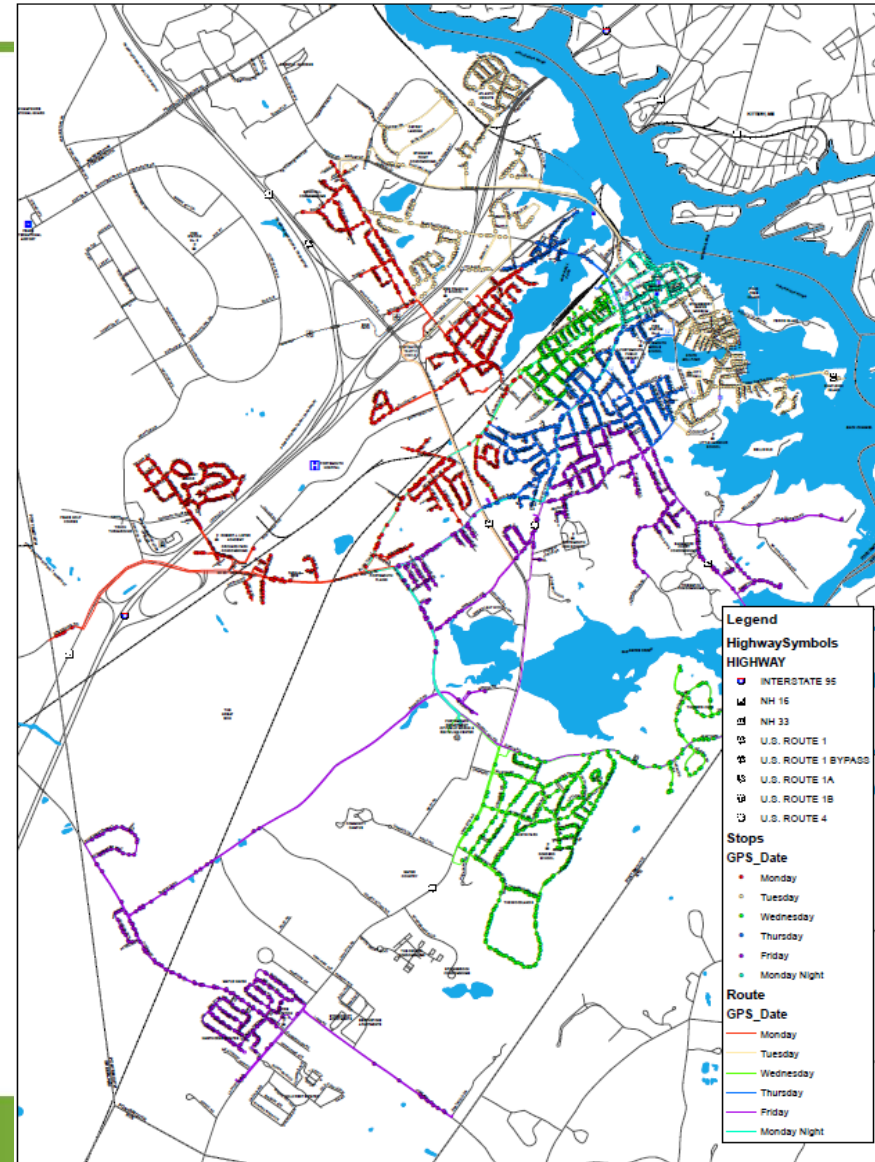
# DPW Curbside Collection

- Every weekday curbside routes are picked up by the DPW
  - Mixed recycling
  - Solid waste
  - Yard waste and brush
  - Bulky waste items per scheduled appointment
- Curbside collection is a service for residential households
  - DPW does not collect properties containing five or more units
  - DPW does not collect non-residential commercial properties
- Monday night pick up for downtown business district
  - Only exception for commercial properties that receive DPW service



# DPW Curbside Collection

5,244 residential household's trash, recycling and yard waste is collected weekly





# History of DPW Downtown Collection

## CITY OF PORTSMOUTH STREET MAP

PUBLIC WORKS DEPARTMENT

1972

- RED = CONTRACT PICK UP
  - YELLOW = MONDAY
  - GREEN = TUESDAY
  - PUKE = ~~MONDAY~~ WEDNESDAY
  - PURPLE = THURSDAY
  - BROWN = FRIDAY
- UUU = MONDAY NIGHT (CBD)

## CITY OF PORTSMOUTH STREET MAP

PUBLIC WORKS DEPARTMENT

1972

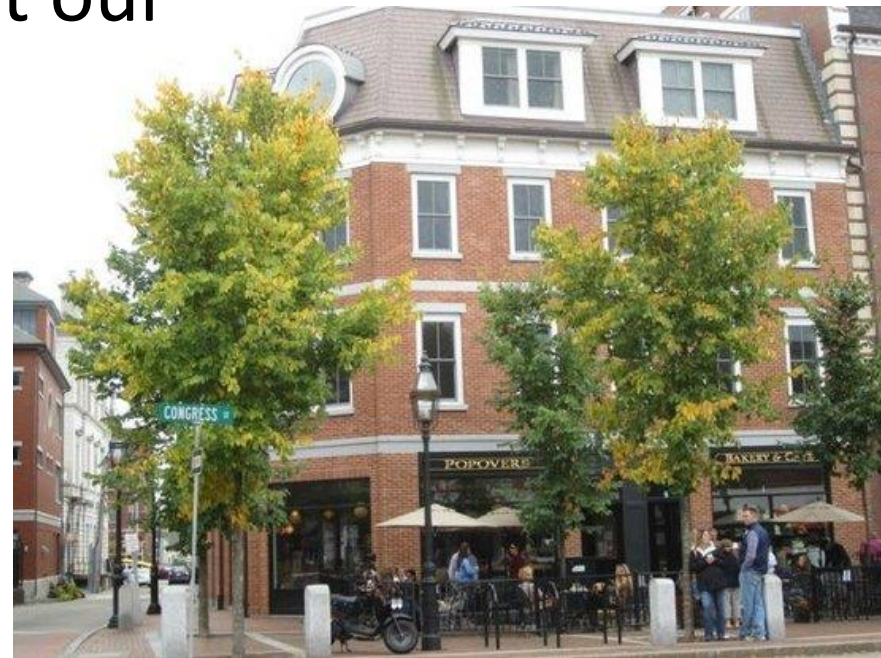
- RED = CONTRACT PICK UP
  - YELLOW = MONDAY
  - GREEN = TUESDAY
  - PUKE = ~~MONDAY~~ WEDNESDAY
  - PURPLE = THURSDAY
  - BROWN = FRIDAY
- UUU = MONDAY NIGHT (CBD)



- 1972 Monday evening pickup
  - Switch to morning pickup at some point
- Late 90's switch from morning pickup back to evening pickup per businesses request

# History of DPW Downtown Collection

Portsmouth has evolved but our trash routes haven't



DPW Collection is a separate service from private haulers which many businesses use for on demand collection



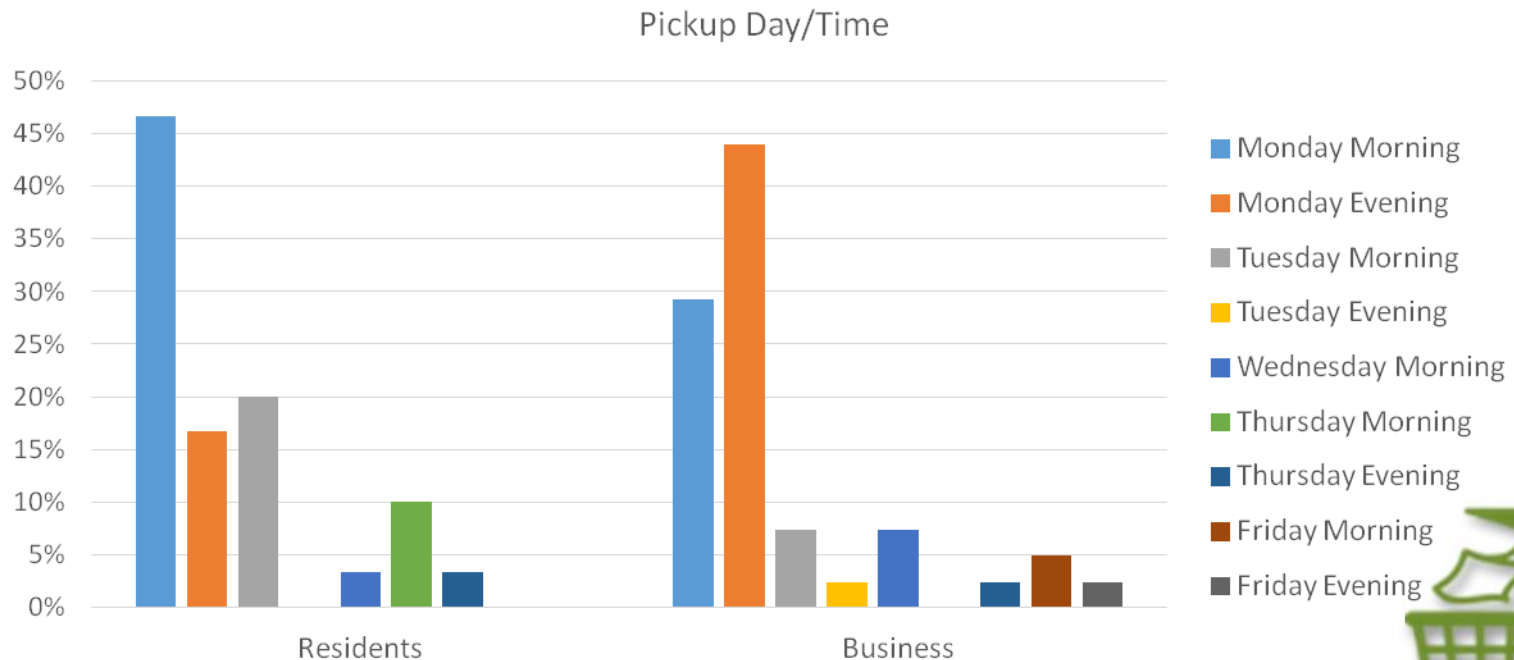
# DPW Downtown Collection Challenges

- Challenges
  - Service a mix of residential and commercial properties
  - Trash and recycling sit on sidewalks all day after residents leave for work
  - Large volumes of waste and recycling to collect
  - Trash and recycling trucks block traffic on narrow streets



# DPW Downtown Collection Challenges

- *Fall 2015 Survey Results*
  - Residents prefer morning collection
  - Businesses prefer evening collection



# DPW Downtown Collection Solutions

- Suggestion
  - Collect residential waste in the morning
    - If collection is moved to Tuesday, DPW can add a morning collection for residents only while still providing the Tuesday afternoon collection for businesses
      - » \*Double downtown pickup is not possible on Mondays due to larger number of residential households serviced that day
    - Businesses keep waste and recycling off sidewalks till 2:30 pm
    - Increase commercial trash volume limit from 200 gallons to 300 gallons
- Your Input
  - Questions, Comments, Ideas, Solutions?
    - Email to [jalevenson@cityofportsmouth.com](mailto:jalevenson@cityofportsmouth.com)



# Questions, Comments, Ideas, Solutions?

Email to: [jalevenson@cityofportsmouth.com](mailto:jalevenson@cityofportsmouth.com)

