



Peirce Island WWTF Upgrade Construction
Public Information Meeting
Sept 21, 2016

Topics of Discussion

- Introduction to Project Team
- Communications and Information
- Project Overview
 - Schedule
 - Construction Details
 - Construction Mitigation Items
 - Events & Recreation
- Public Input/Comments/Concerns
- Next Meeting



Communications and Information

- Website:
<http://www.portsmouthwastewater.com/piupgrade.html>
 - News and Updates
 - Recreational Info
 - Project Info
 - Report Form
 - Etc.
- City Staff:
 - Don Song, Wastewater Project Manager, 603-610-7305
dsong@cityofportsmouth.com
 - Terry Desmarais, City Engineer, 603-766-1421
tldesmarais@cityofportsmouth.com



Project Schedule

- Contract Milestones:
 - Notice to Proceed September 1, 2016
 - Interim Milestones to be Selected
 - BAF Substantial Completion December 1, 2019
 - Project Substantial Completion May 31, 2020
 - Project Final Completion August 30, 2020

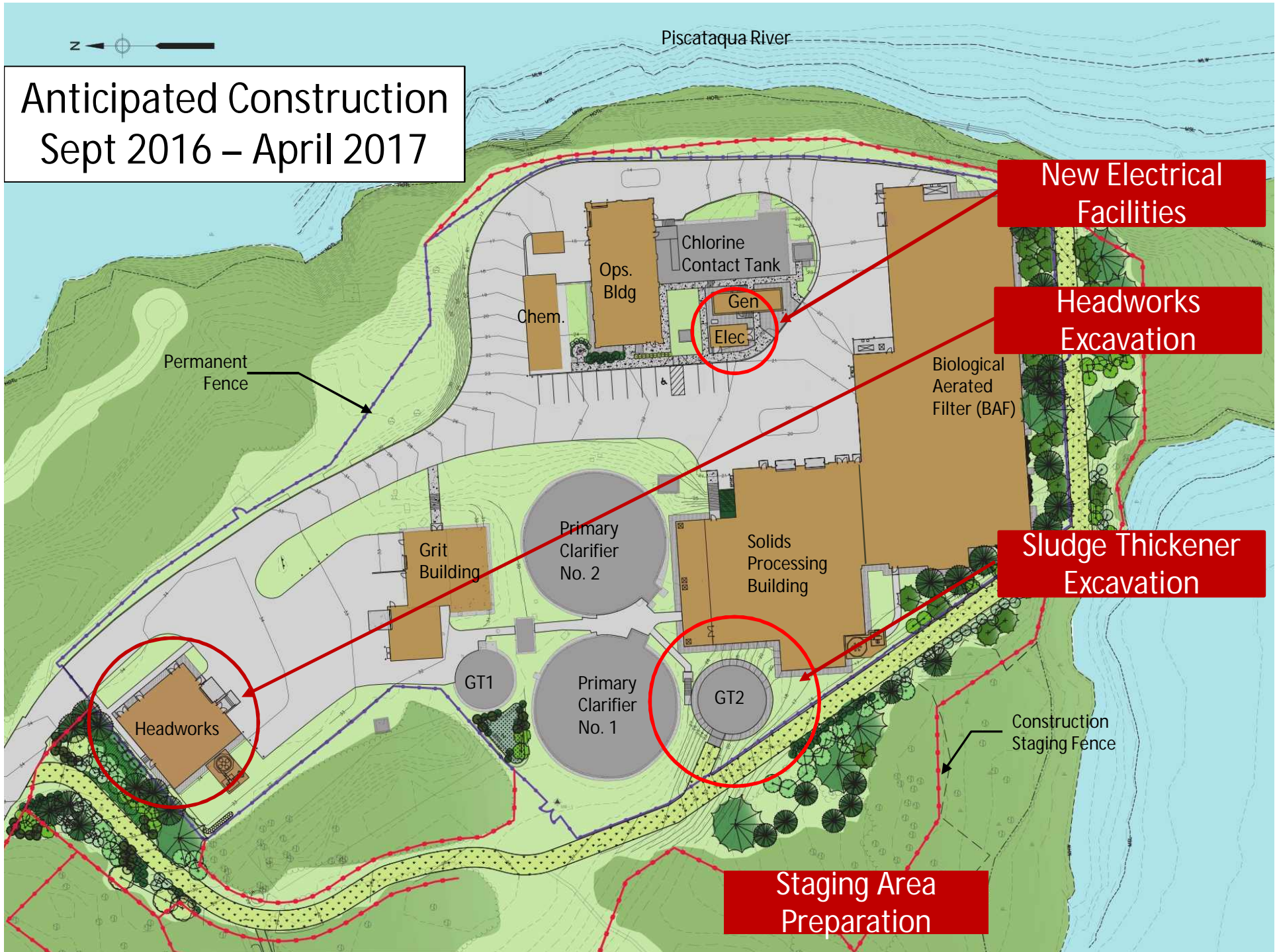


Next Month's Schedule

- Ongoing Peirce Island Bridge Work
- Begin Installation of Pedestrian Fence and Staging Fence Near Pool
- Deliver and Setup Temporary Field Office Trailers at Pool Parking Lot
- Roadway Signage and Traffic Control
- Curb Radius at Mechanic and Marcy Street (Prescott Park Side)
- Underground Utility Relocation and Installation
- Equipment and Material Procurement



Anticipated Construction
Sept 2016 – April 2017



New Electrical Facilities

Headworks Excavation

Sludge Thickener Excavation

Staging Area Preparation

Permanent Fence

Construction Staging Fence

Piscataqua River

Chem.

Ops. Bldg

Chlorine Contact Tank

Gen

Elec

Biological Aerated Filter (BAF)

Grit Building

Primary Clarifier No. 2

Solids Processing Building

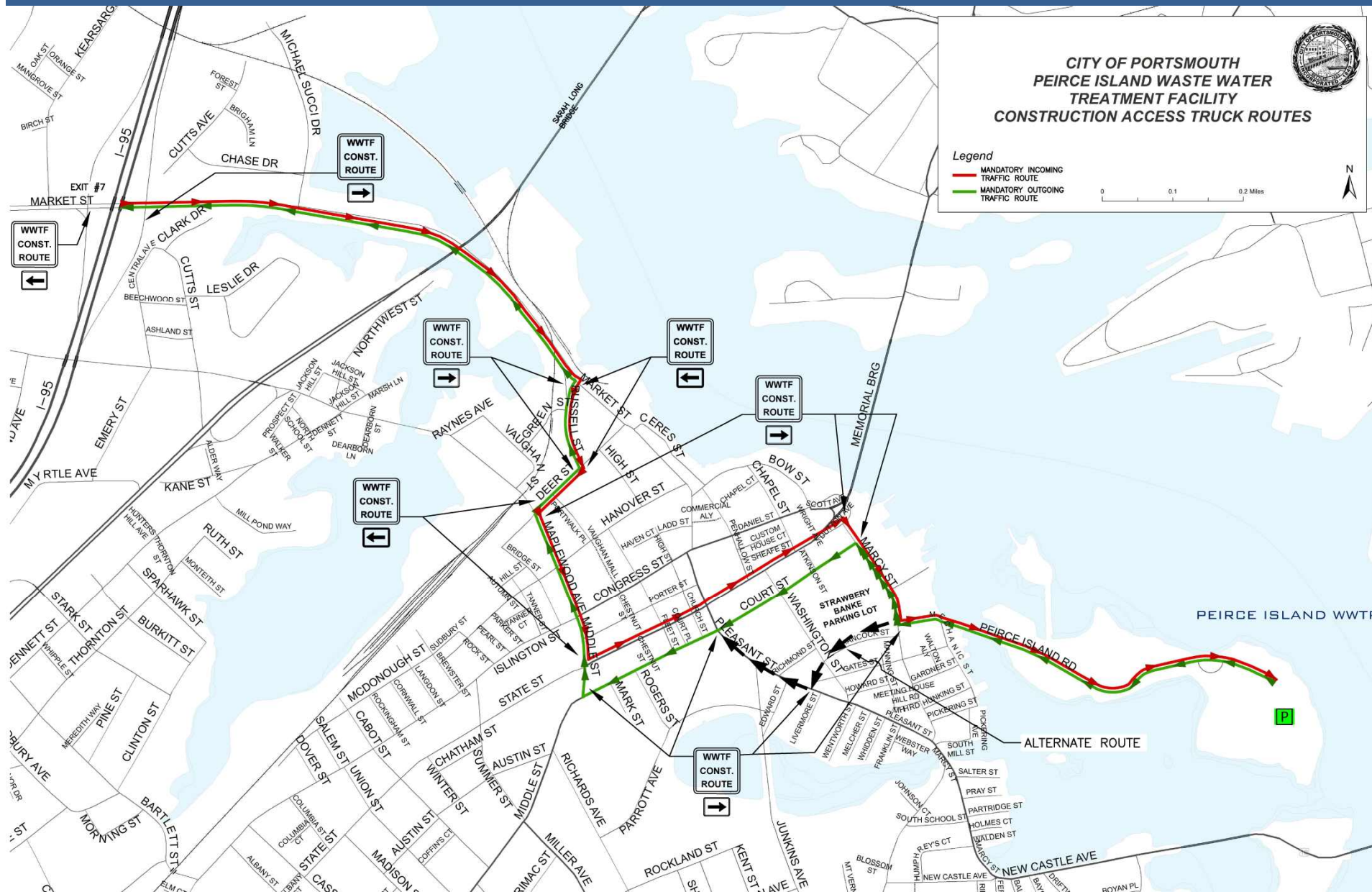
Headworks

GT1

Primary Clarifier No. 1

GT2

Construction Access Routes



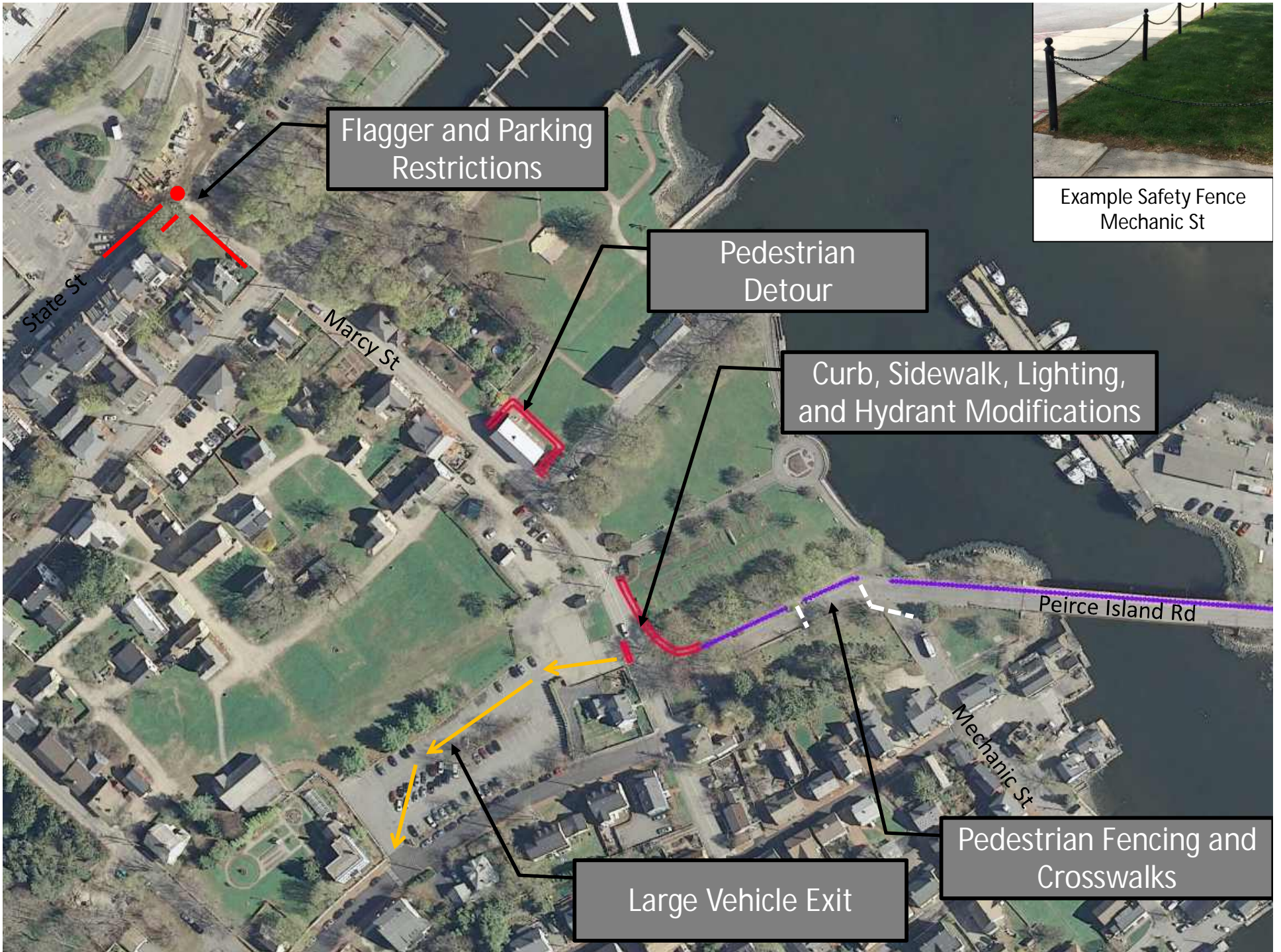
Peirce Island Modifications During Construction

- Restrict Dog Walking On-Island
- Pedestrian and Staging Area Fencing
- State Fish Pier Open
- Pool and Boat Launch Open Seasonally



Peirce Island Modifications During Construction, cont.





Flagger and Parking Restrictions

Pedestrian Detour

Curb, Sidewalk, Lighting, and Hydrant Modifications

Example Safety Fence
Mechanic St

Pedestrian Fencing and Crosswalks

Large Vehicle Exit

State St

Marcy St

Peirce Island Rd

Mechanic St

Peirce Island Modifications During Construction, cont.



Construction Mitigation

- Noise and Dust Control
- Historic Resources
- Site Safety Assessment
- Parking Improvements
 - Four Tree Island Parking Lot Expansion
 - Parking Lot Adjacent to Boat Launch



Events and Recreation

- Upcoming
 - Fairy House Tours
 - Memorial Bridge Road Race
 - Memorial Bridge Walk
 - Turkey Trot





Public Input / Comments / Concerns

Upcoming Meetings

- Public Construction Meeting
 - Monthly (3rd Weds) at 11 AM at Council Chambers
 - Televised and Recorded
 - Upcoming Dates: 10/19, 11/16, and 12/21/16



