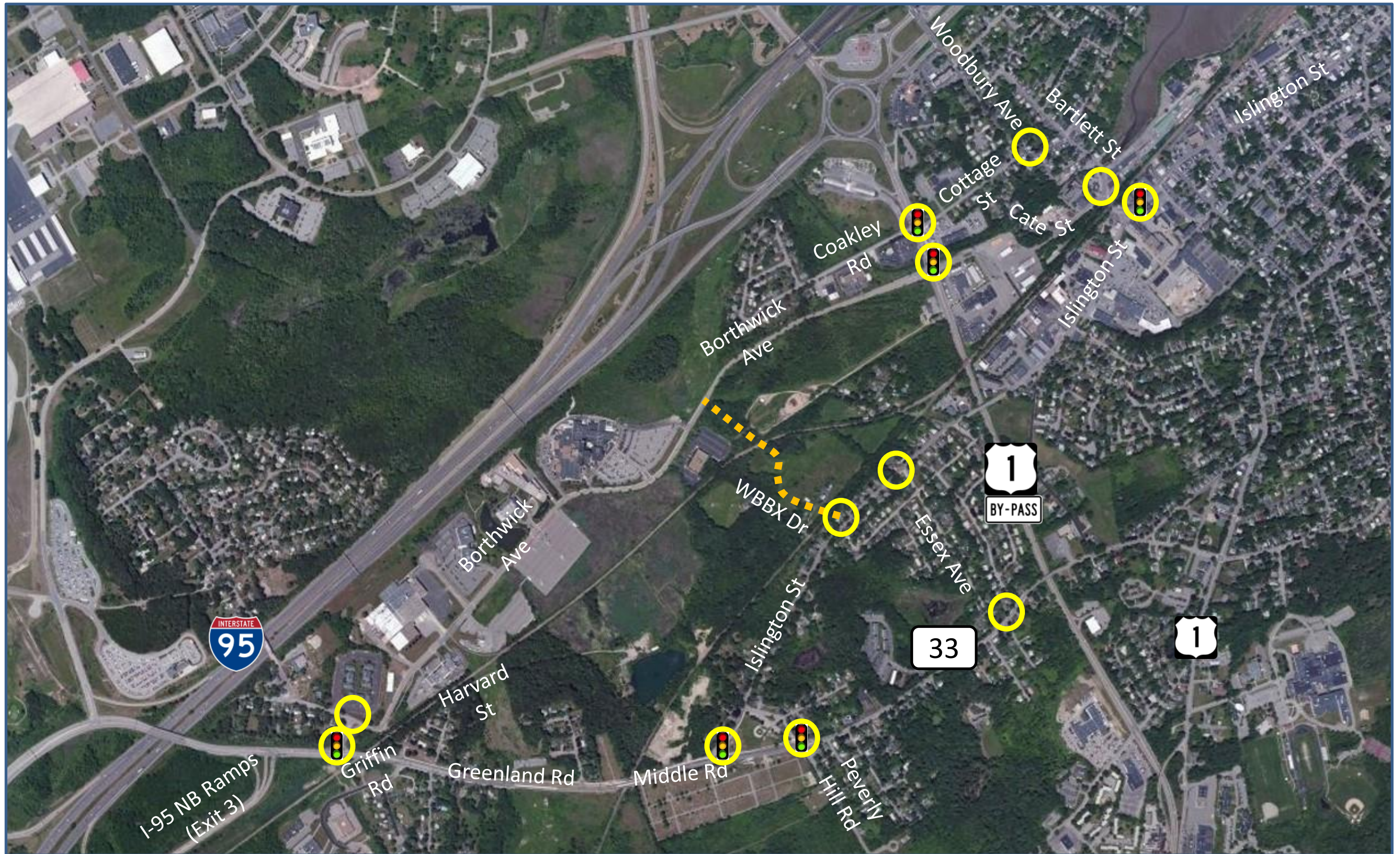


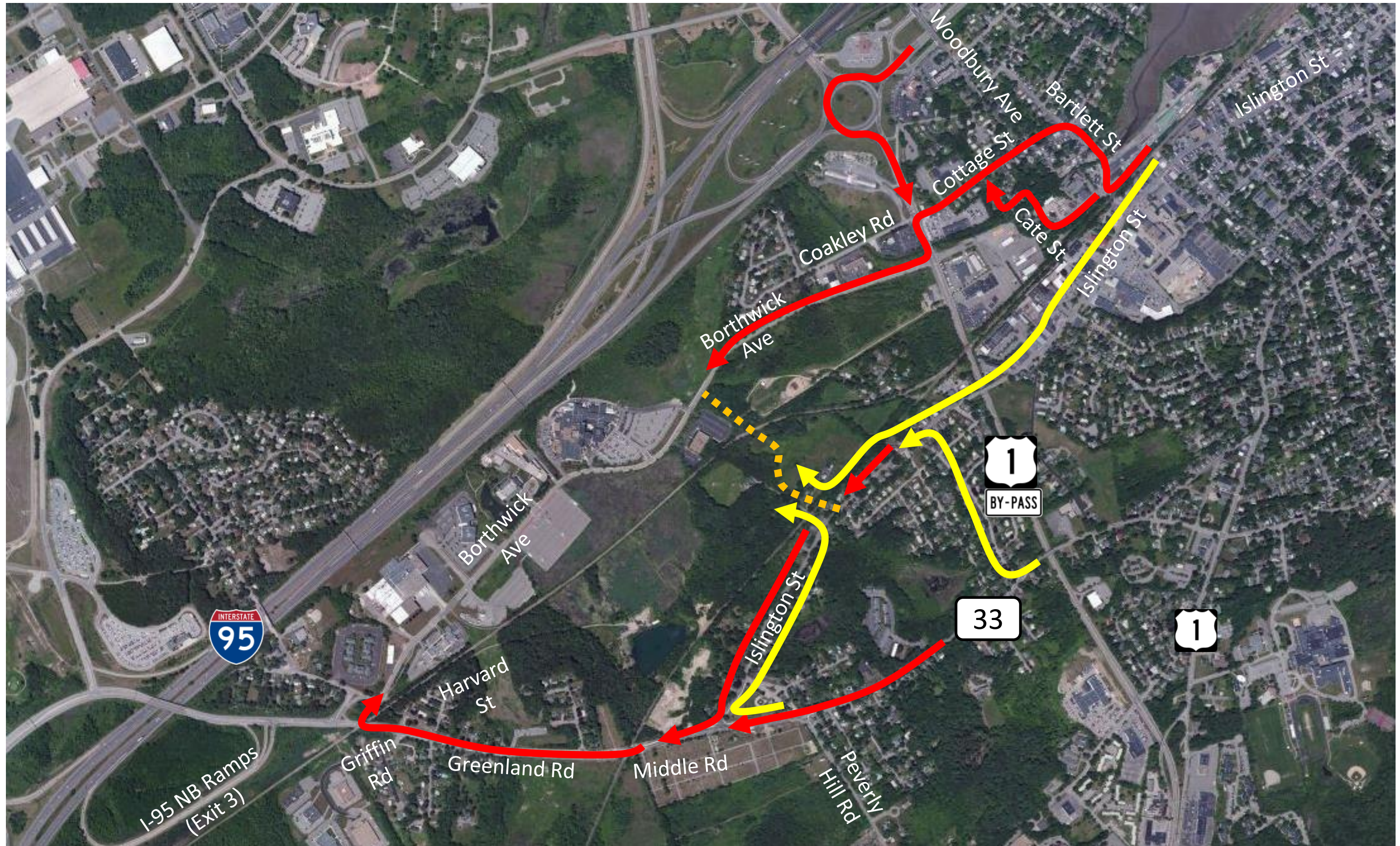
**Borthwick Avenue-Islington Street  
Subdivision Road  
Portsmouth, NH**



March 3, 2016

Jason R. Plourde, P.E., PTP, NH LPA

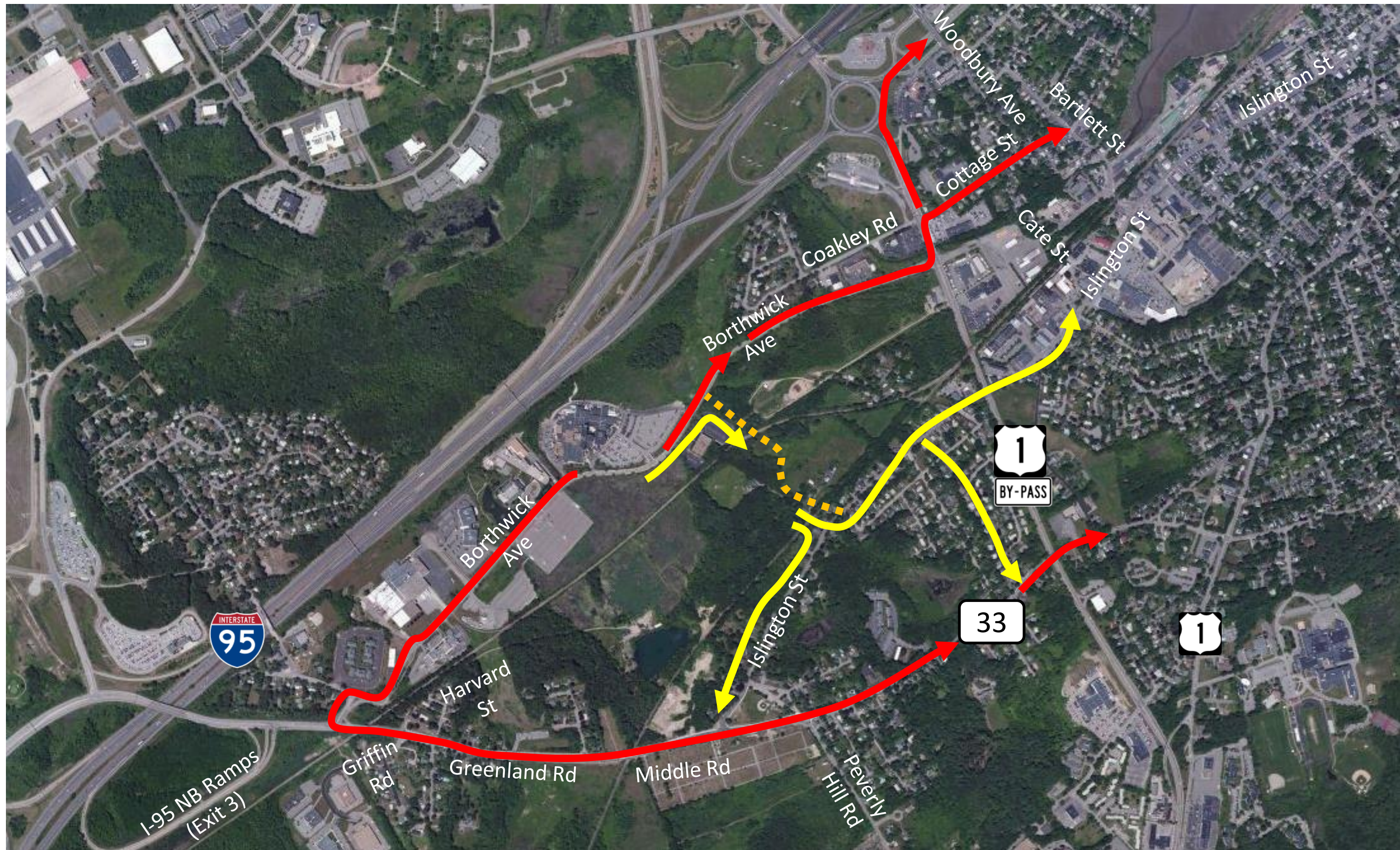


Subdivision Road  
Study Area



-  Reduced Movements
-  Increased Movements

Redistributed Entering Travel Routes with Subdivision Road



- ➔ Reduced Movements
- ➔ Increased Movements

Redistributed Exiting Travel Routes with Subdivision Road

**PERMITTING PLANS  
 NOT FOR CONSTRUCTION**



**Borthwick  
 Forest, LLC**

Proposed  
 Subdivision Road

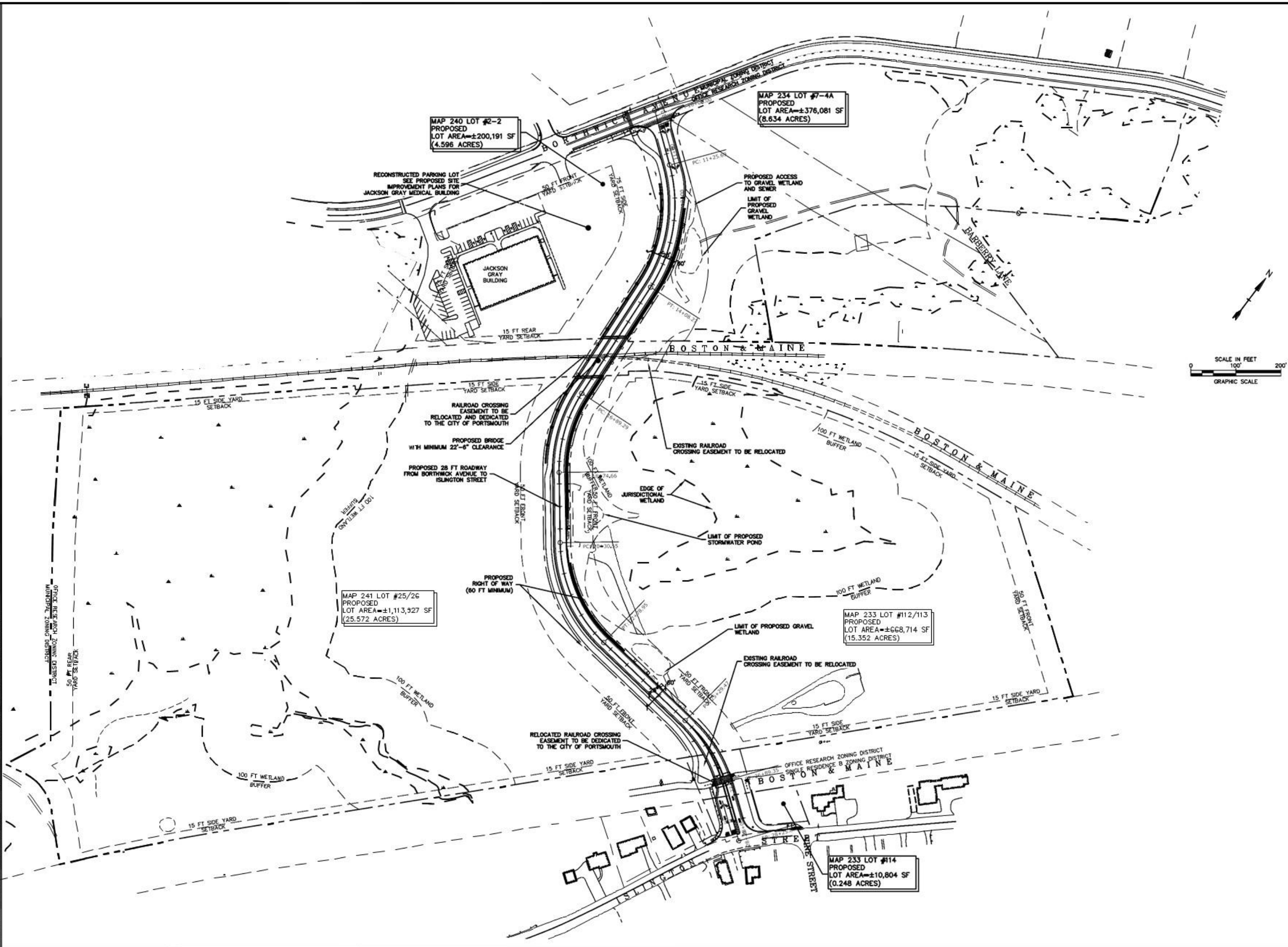
Portsmouth,  
 New Hampshire

REV	DATE	DESCRIPTION
5	2/18	REVISOR ADDRESS/UTIP STATION
4	1/18	REVISOR PERMITS/ACCOMMODATIONS
3	2/21/15	REVISOR ROADWAY LAYOUT
2	1/15/15	REVISOR ROADWAY LAYOUT
1	1/21/14	TAC SUBDIVISION

PROJECT NO: K0043  
 FILE: K0043\_SITE.DWG  
 DRAWN BY: NAH  
 CHECKED BY: PNC  
 APPROVED BY: GMM

OVERALL ROADWAY PLAN

SCALE: ASSHOWN



04/02/2015 10:24am P:\0043\0043\_Site\_DWG.dwg COVERED ROAD  
 TIGHE & BOND, INC., 177 CORPORATE DRIVE, PORTSMOUTH, NH 03801  
 603.433.8518 FAX 603.433.8519 www.tighebond.com





