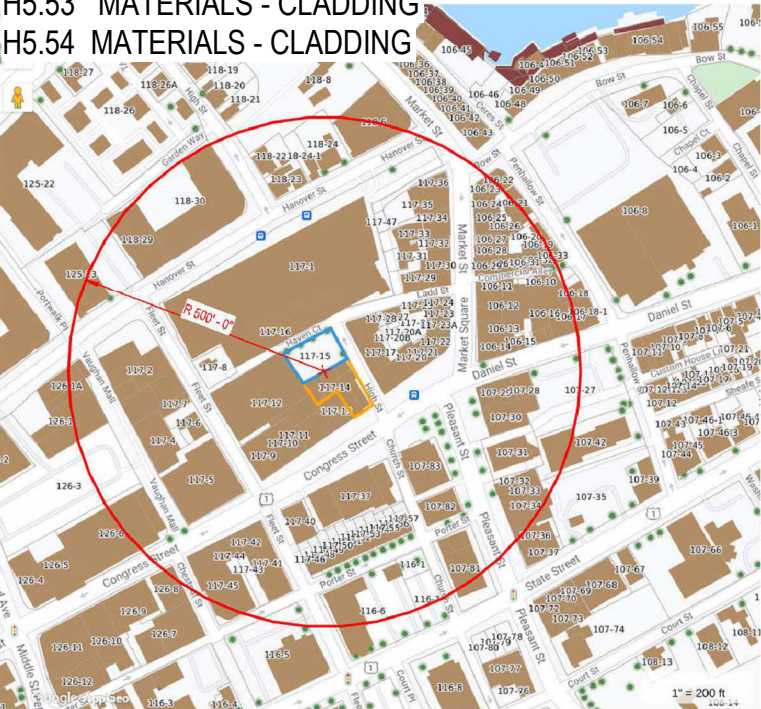


DRAWING INDEX

- H5.01 COVER
- H5.10 SITE PLAN
- H5.11 DEMOLITION PLAN
- H5.12 DEMOLITION ELEVATIONS
- H5.13 ROOF PLAN
- H5.14 FIRST FLOOR PLAN
- H5.15 BASEMENT PLAN
- H5.16 AVERAGE GRADE PLANE CALCULATIONS
- H5.17 ROOF AREAS CALCULATIONS
- H5.20 ROOF HEIGHT DETAIL - HAVEN CT
- H5.21 ELEVATION - CONGRESS STREET
- H5.22 ELEVATION - HIGH STREET
- H5.23 ELEVATION - HAVEN COURT
- H5.24 ELEVATION - REAR (WEST) ALLEY
- H5.31 AXONOMETRIC
- H5.32 VINGNETTE - CONGRESS STREET
- H5.33 VINGNETTE - HIGH ST FROM CONGRESS ST
- H5.34 VINGNETTE - HIGH ST FROM STARBUCKS
- H5.35 VINGNETTE - HAVEN CT FROM LADD ST
- H5.36 VINGNETTE - HIGH ST AT LADD ST & HAVEN CT
- H5.37 VINGNETTE - HAVEN COURT AT NEWBERRY'S
- H4.41 DETAILS
- H5.50 MATERIALS - WINDOWS
- H5.51 MATERIALS - FENESTRATION
- H5.52 MATERIALS - ARCADE FENESTRATION
- H5.53 MATERIALS - CLADDING
- H5.54 MATERIALS - CLADDING



PROJECT NARRATIVE

REHABILITATION AND ADAPTIVE REUSE OF EXISTING HISTORIC STRUCTURES WITH A NEW ADJACENT STRUCTURE ON REAR SURFACE PARKING LOT.

USES INCLUDE A FULL SERVICE RESTAURANT AT FIRST FLOOR, A BOUTIQUE HOTEL ABOVE, AND ONE LEVEL OF UNDERGROUND PARKING. OFFSITE IMPROVEMENTS WILL BE A FUTURE AND SEPARATE APPLICATION IN COLLABORATION WITH THE CITY OF PORTSMOUTH.

- PROJECT UPDATES SINCE LAST HDC WORKSESSION:**
- A. ADJUSTED ROOFS AND NEW DORMER AT 3 CONGRESS STREET.
 - B. ADDITIONAL DETAILS AND PROFILE SECTIONS
 - C. FINE TUNED STOREFRONT FENESTRATION
 - D. EXTERIOR MATERIALS PRODUCT CUT SHEETS

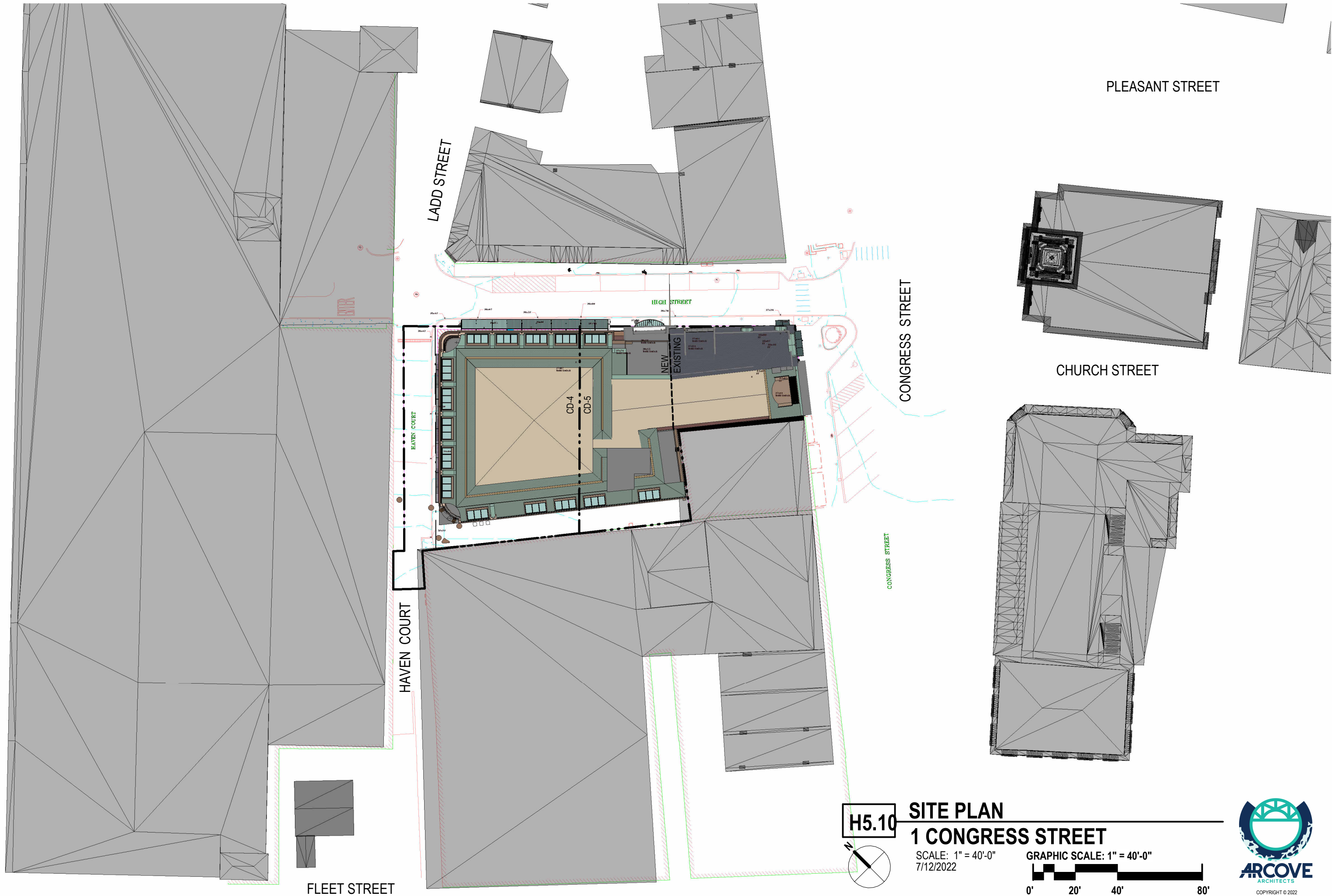


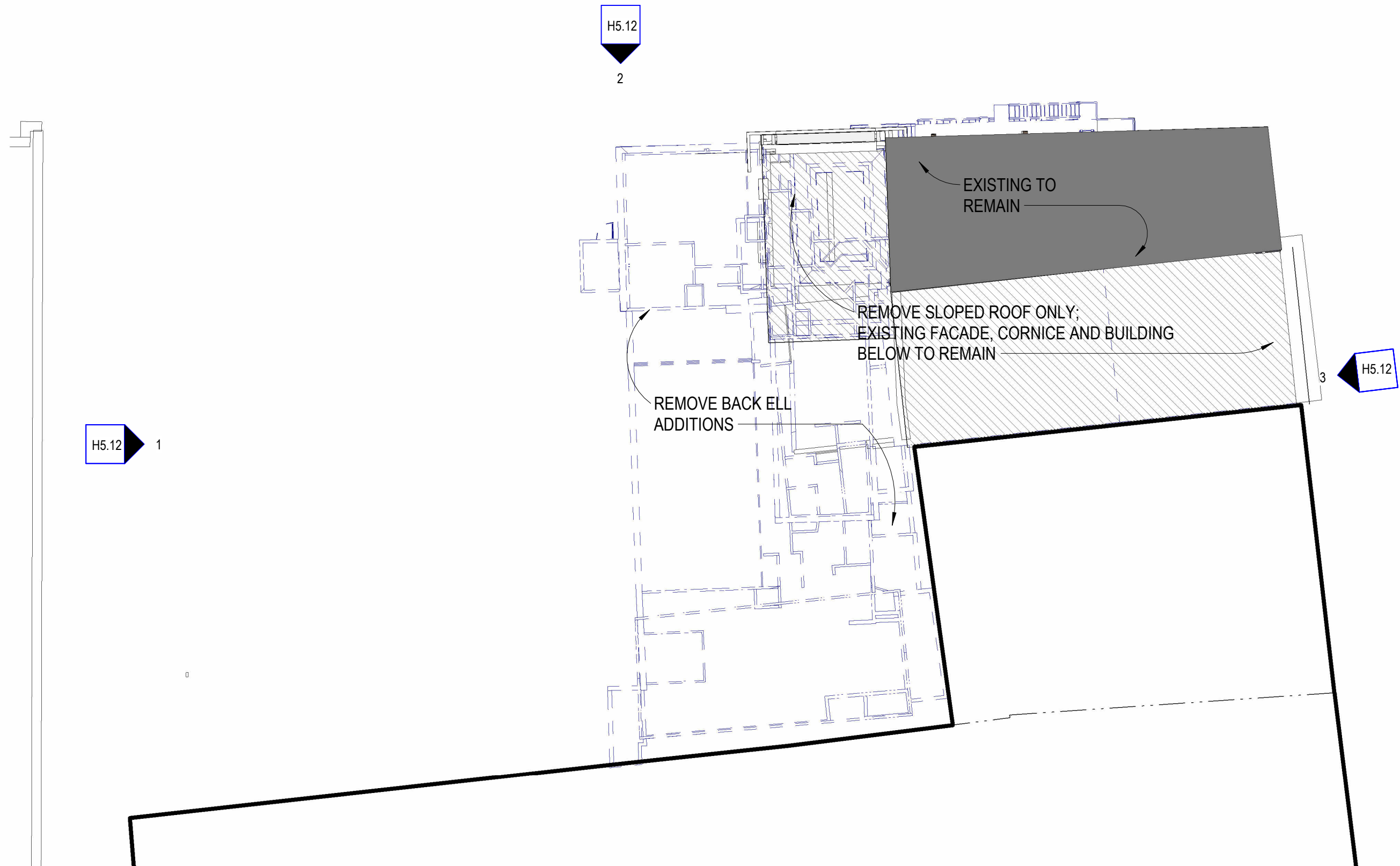
ONE CONGRESS STREET
RENOVATION & ADDITION
ONE MARKET SQUARE, LLC

ZONING BOARD OF ADJUSTMENT
JULY 12, 2022

H5.01 COVER
1 CONGRESS STREET
SCALE:
7/12/2022







H5.11 **DEMOLITION PLAN**
1 CONGRESS STREET

SCALE: 1/16" = 1'-0"
7/12/2022

GRAPHIC SCALE: 1/16" = 1'-0"



REMOVE FRONT SLOPED
ROOF AREA



10'-0 5/8"
11'-3"
12'-8 3/8"

EXISTING ATTIC
62' - 1 1/4"

EXISTING-Level 3
52' - 0 5/8"

EXISTING-Level 2
40' - 9 5/8"

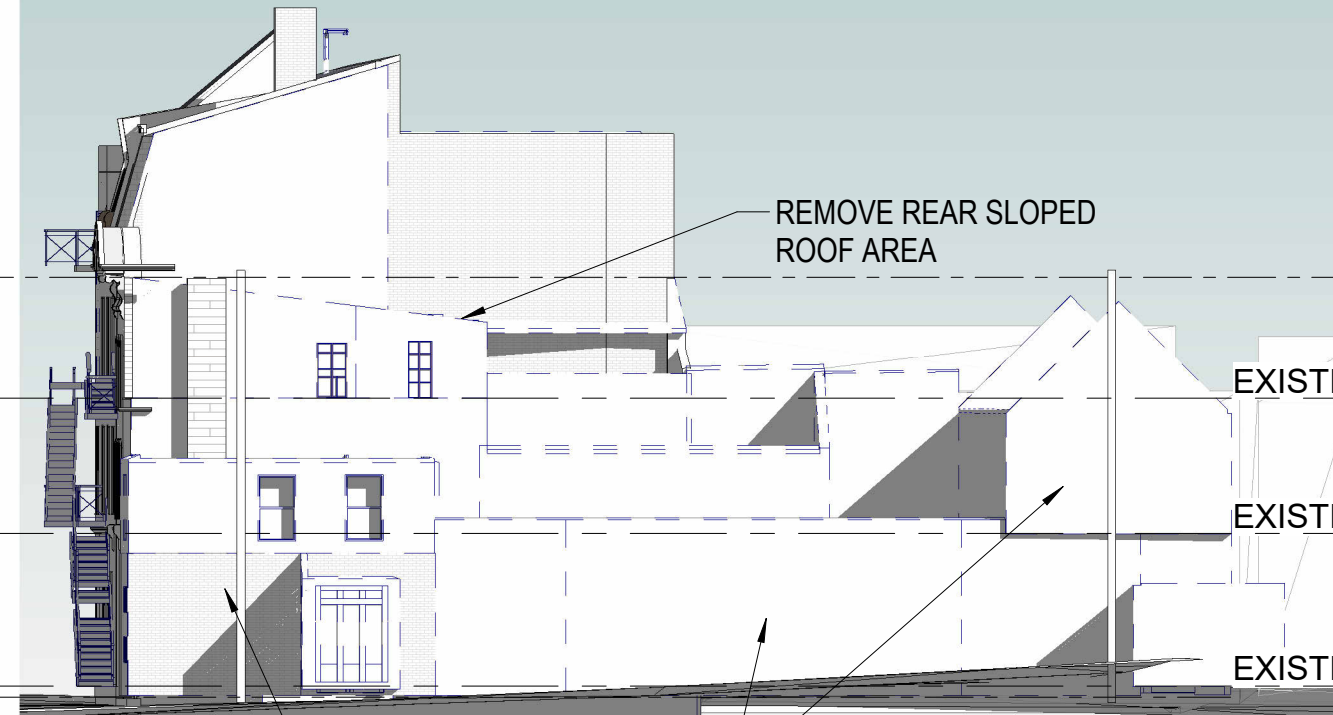
EXISTING-Level 1
28' - 1 1/4"

AVG GRADE CD5
EXISTING
27' - 2 1/8"

REMOVE EXISTING
REPLACEMENT WINDOWS

3 **PROPOSED ELEVATION - CONGRESS ST**
1/16" = 1'-0"

REMOVE REAR SLOPED
ROOF AREA



ATTIC
62' - 1 1/4"

EXISTING-Level 3
52' - 0 5/8"

EXISTING-Level 2
40' - 9 5/8"

EXISTING-Level 1
28' - 1 1/4"

REMOVE REAR ADDITIONS

1 **REAR DEMOLITION ELEVATION - NW - HAVEN COURT**
1/16" = 1'-0"

AVG GRADE CD5
EXISTING
27' - 2 1/8"

REMOVE REPLACED
STOREFRONTS

REMOVE
FIRE ESCAPES

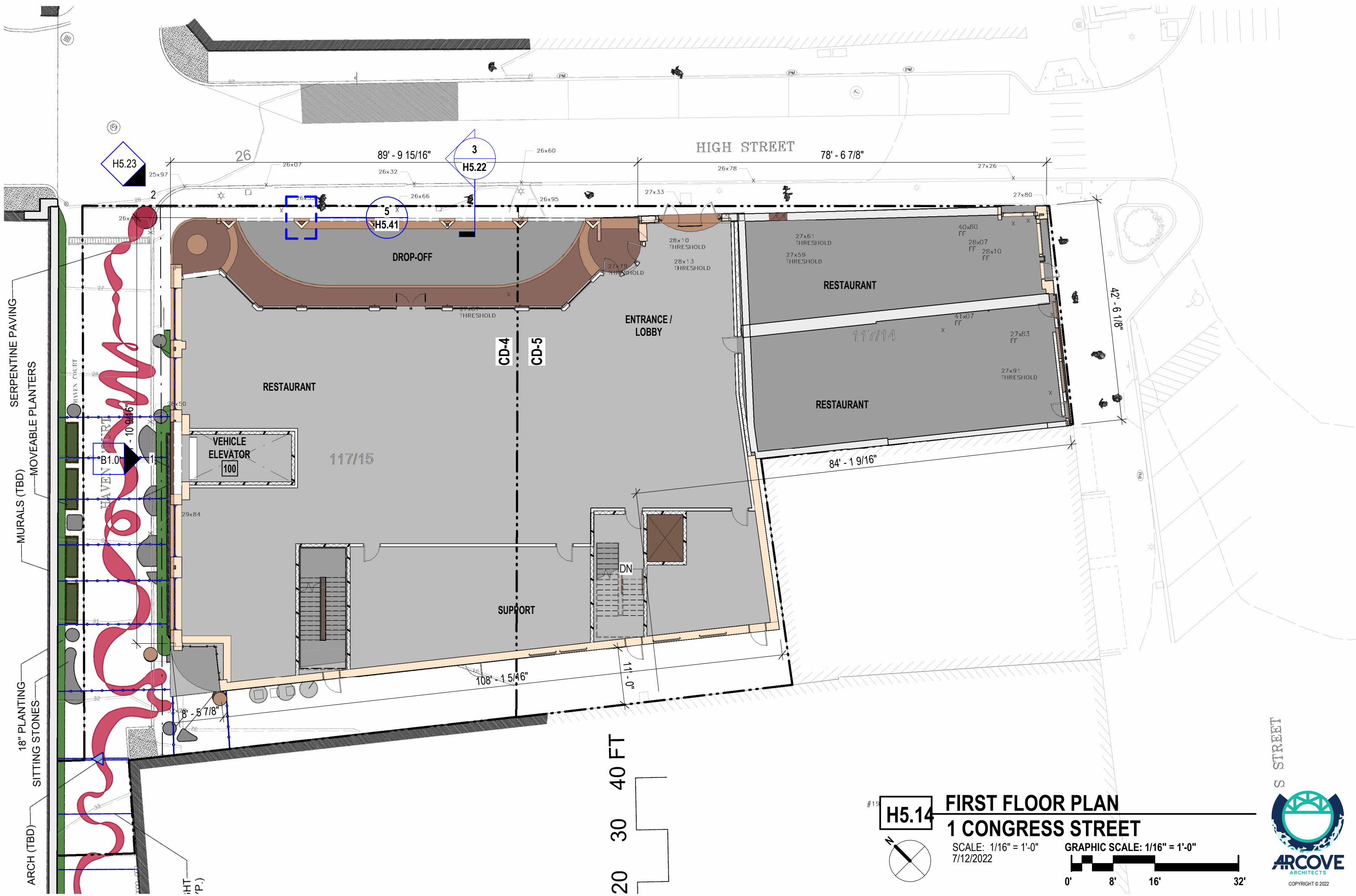
REMOVE
AREA OF REPLACED
STOREFRONT

REMOVE REAR ADDITIONS

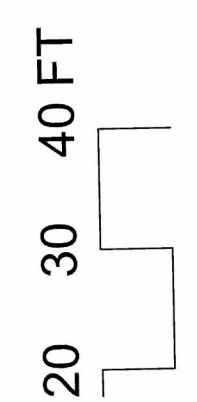
2 **SIDE DEMOLITION ELEVATION - NE - HIGH STREET**
1/16" = 1'-0"

H5.12 DEMOLITION ELEVATIONS
1 CONGRESS STREET

SCALE: 1/16" = 1'-0"
7/12/2022



SERPENTINE PAVING
MOVEABLE PLANTERS
MURALS (TBD)
18" PLANTING
SITTING STONES
ARCH (TBD)



#19

H5.14

11

10

9

8

7

6

5

4

3

2

1

0'

8'

16'

32'

FIRST FLOOR PLAN 1 CONGRESS STREET

SCALE: 1/16" = 1'-0"
7/12/2022

GRAPHIC SCALE: 1/16" = 1'-0"

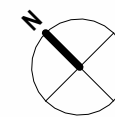


H5.15

BASEMENT PLAN 1 CONGRESS STREET

SCALE: 1/16" = 1'-0"
7/12/2022

GRAPHIC SCALE: 1/16" = 1'-0"



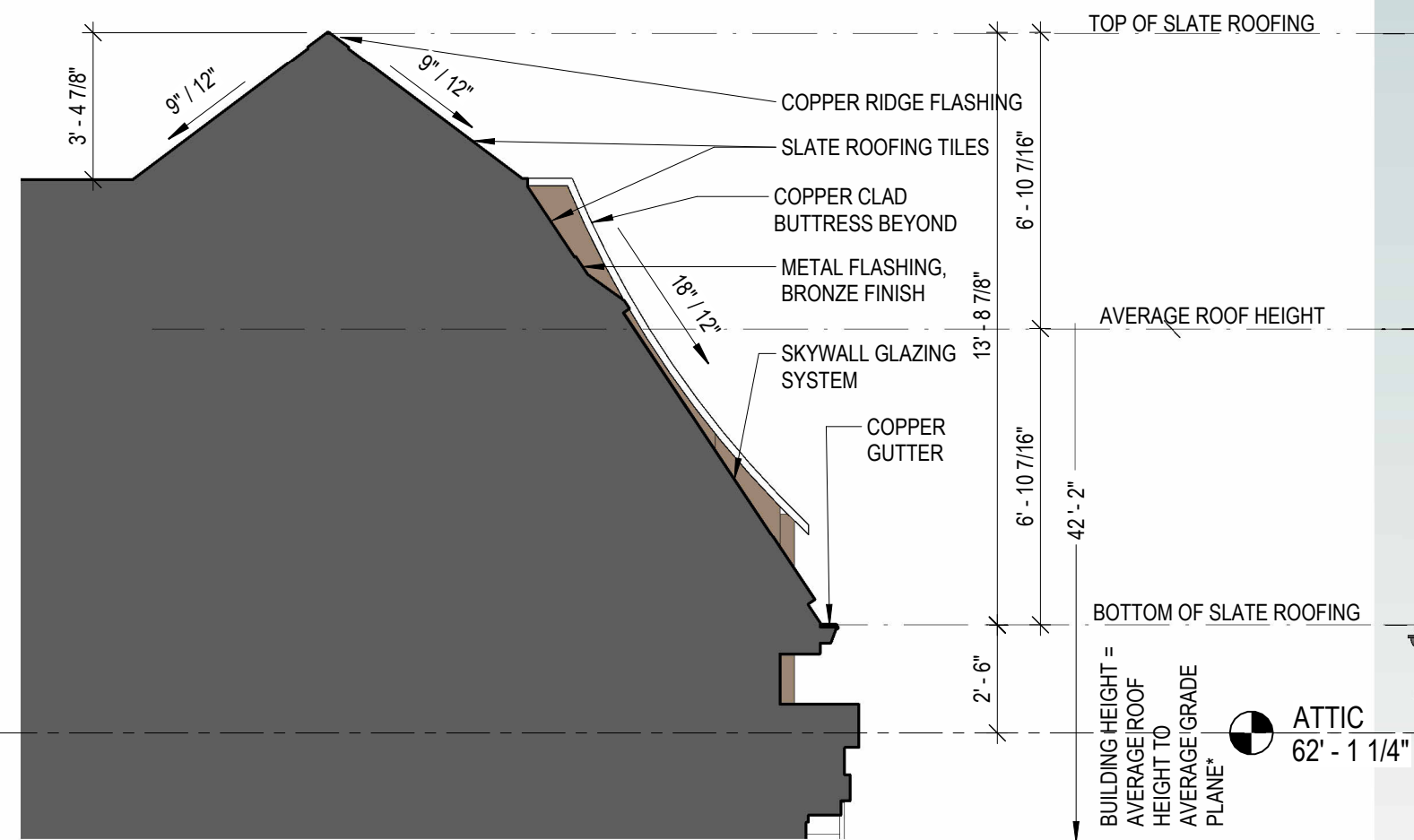


A CD-4 Addition, average grade plane		B CD-5 Addition, average grade plane		C CD-5 Existing, average grade plan	
High Street			27.00	High Street	27.12
			27.00		27.12
			27.01		27.12
			27.04		27.12
			27.06		27.12
			27.09		27.05
			27.12		27.00
			27.12		27.04
			27.12		27.18
			27.12		27.32
					27.45
					27.59
Haven Court		Rear Alley	29.30	Congress Street	27.71
			29.49		27.46
			29.69		27.21
			29.86		27.03
			30.05		27.00
			30.24		27.00
			30.43		27.00
			30.60		27.06
			30.77		27.13
			30.93		27.17
		average CD-5 new 28.60		average CD-5 Existing 27.18	
		Building Height: 42'-10 1/2"		Building Height: 45'-4 1/4"	
Rear Alley					
average CD-4 new 29.31		H5.16		AVERAGE GRADE	
				1 CONGRESS STR	
				SCALE: 1/16" = 1'-0"	
				7/12/2022	

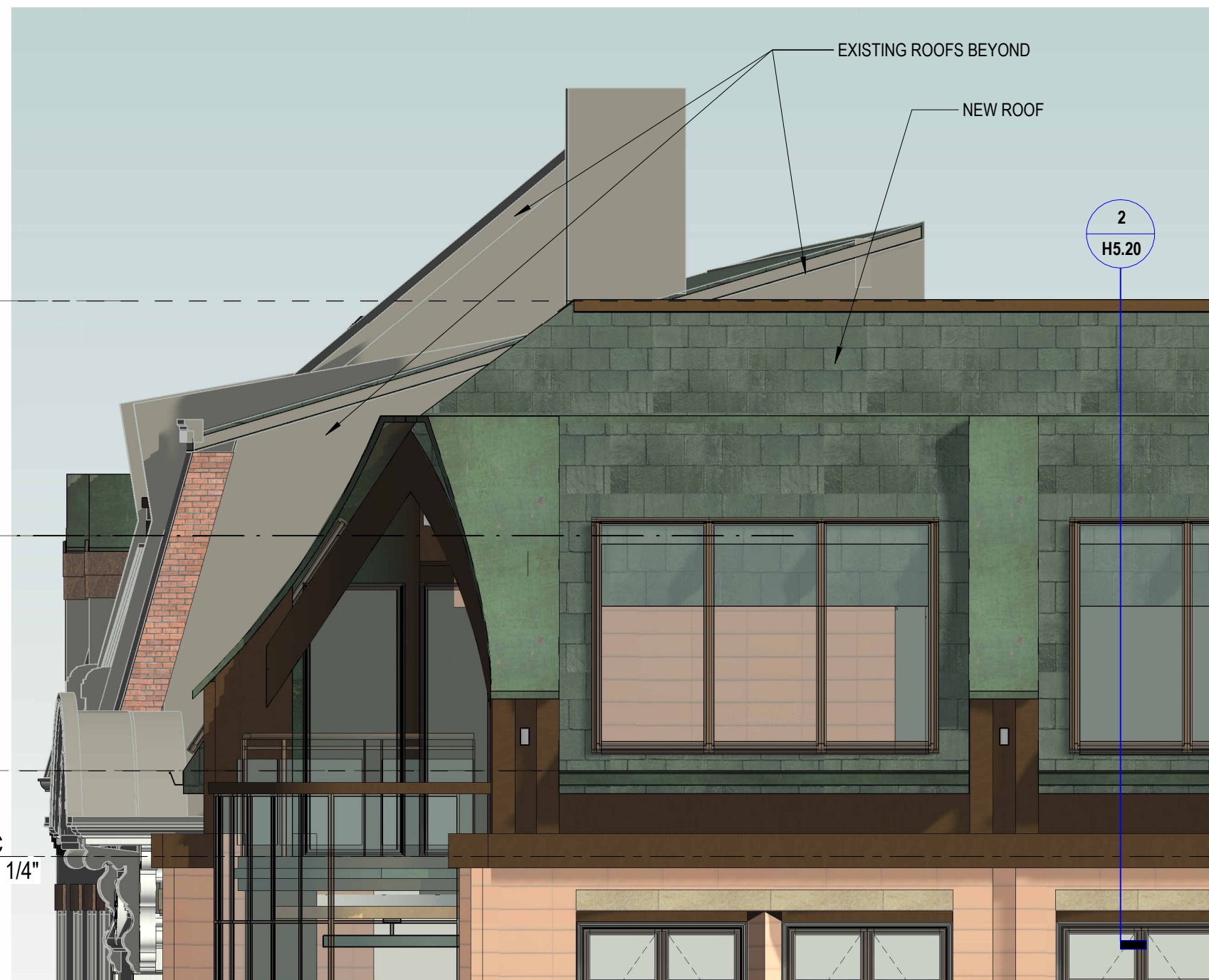


ARCOVE
ARCHITECTS

COPYRIGHT © 2022



2 SKYWALL DETAIL
1/4" = 1'-0"



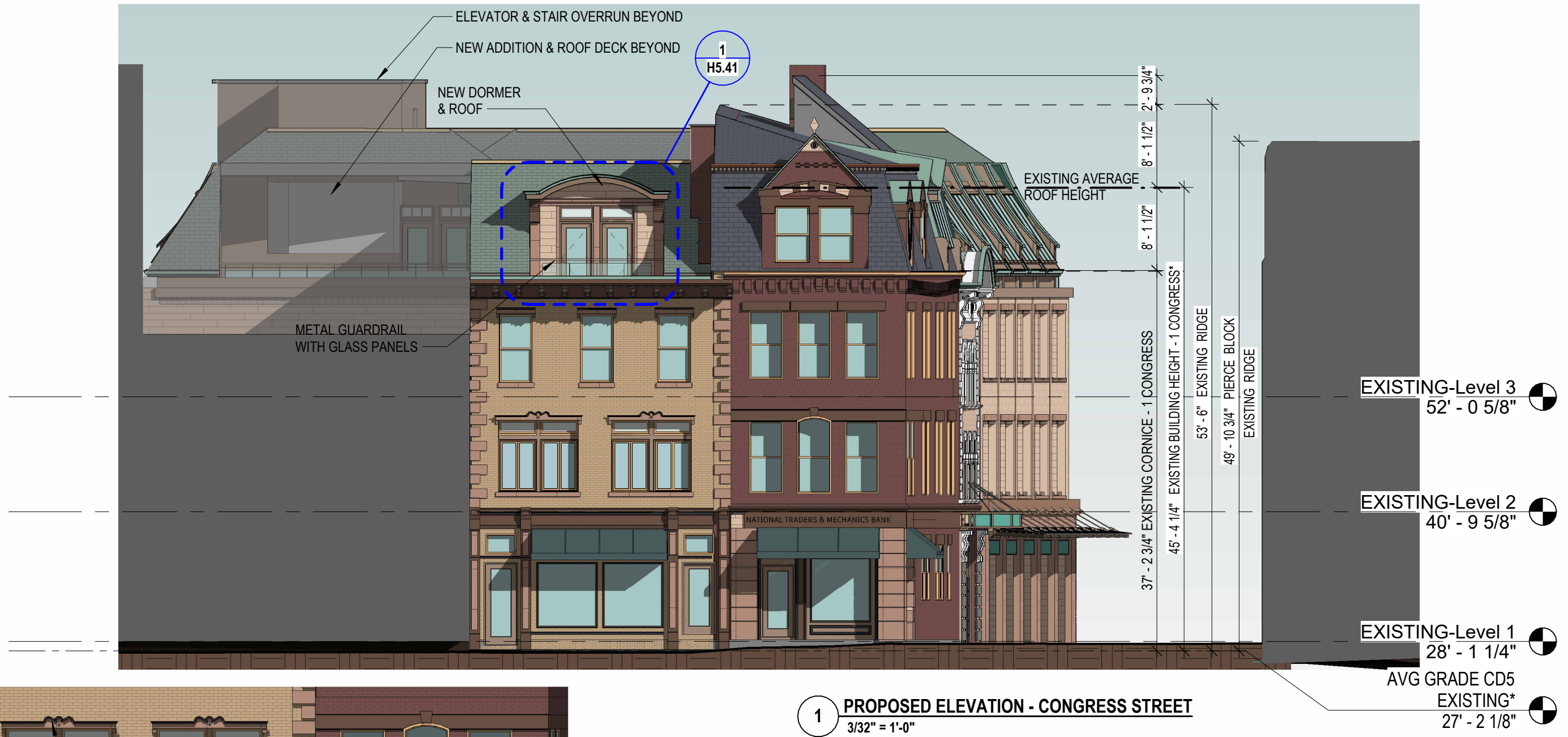
1 PROPOSED ELEVATION - NW HAVEN COURT
1/4" = 1'-0"

H5.20 ROOF HEIGHT DETAIL - HAVEN CT
1 CONGRESS STREET

SCALE: 1/4" = 1'-0"
7/12/2022

* FOR AVERAGE GRADE PLANE OF TOTAL BUILDING SEE SHEET H5.16

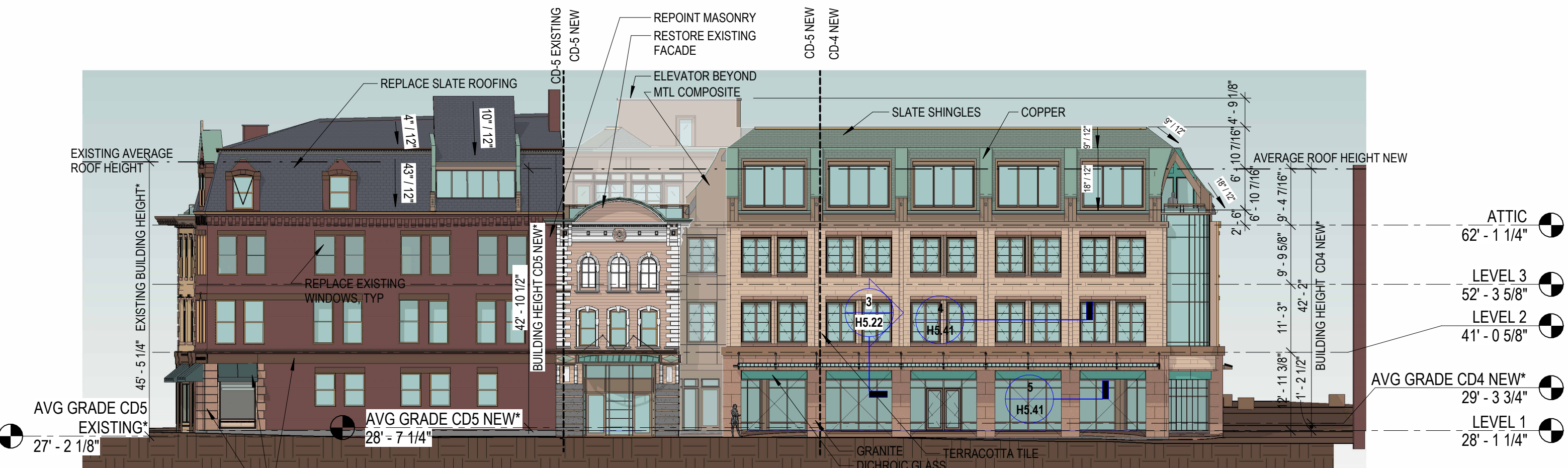




H5.21 ELEVATION - CONGRESS STREET
1 CONGRESS STREET
SCALE: As indicated
7/12/2022

* FOR AVERAGE GRADE PLANE OF TOTAL BUILDING SEE SHEET H5.16

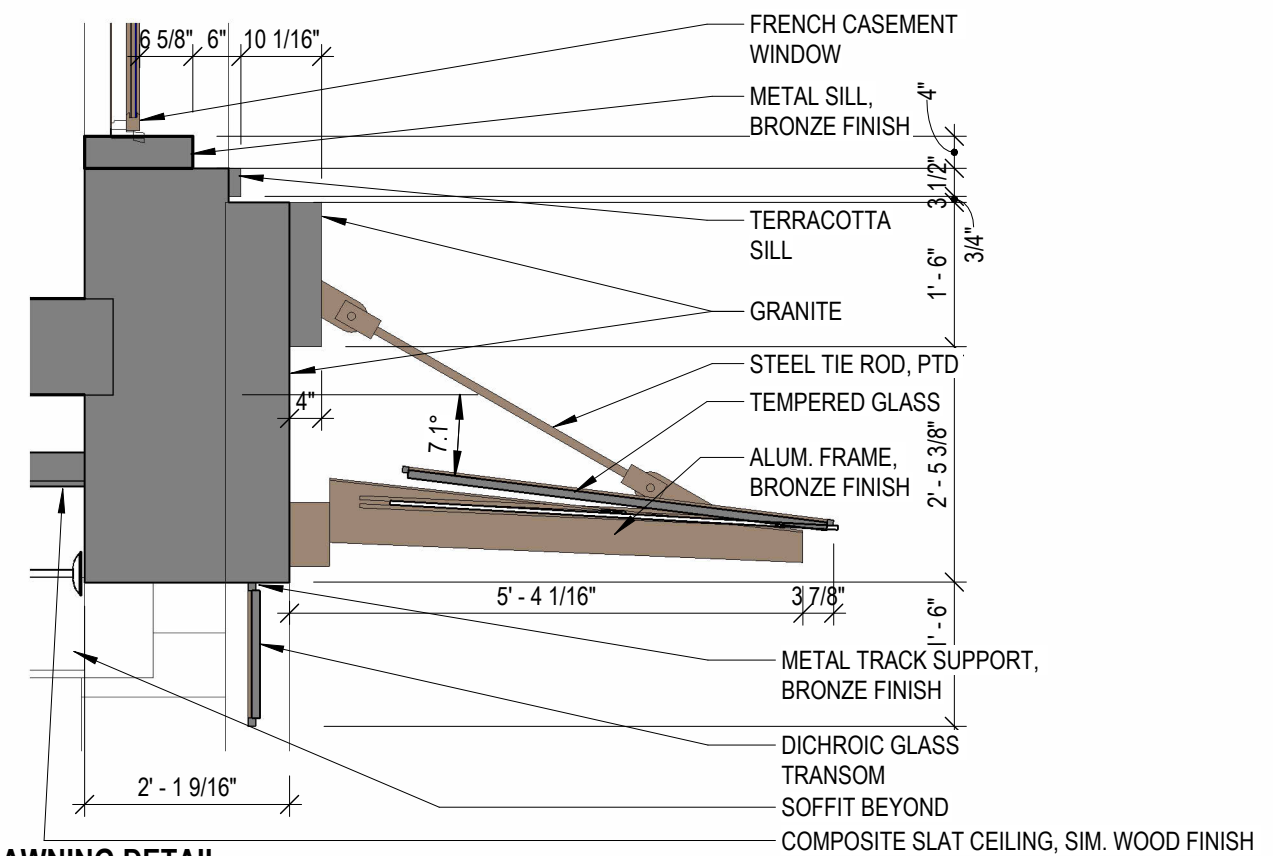




1 PROPOSED ELEVATION - NE - HIGH STREET
1/16" = 1'-0"



2 PROPOSED ELEVATION - NE - HIGH STREET
1/8" = 1'-0"



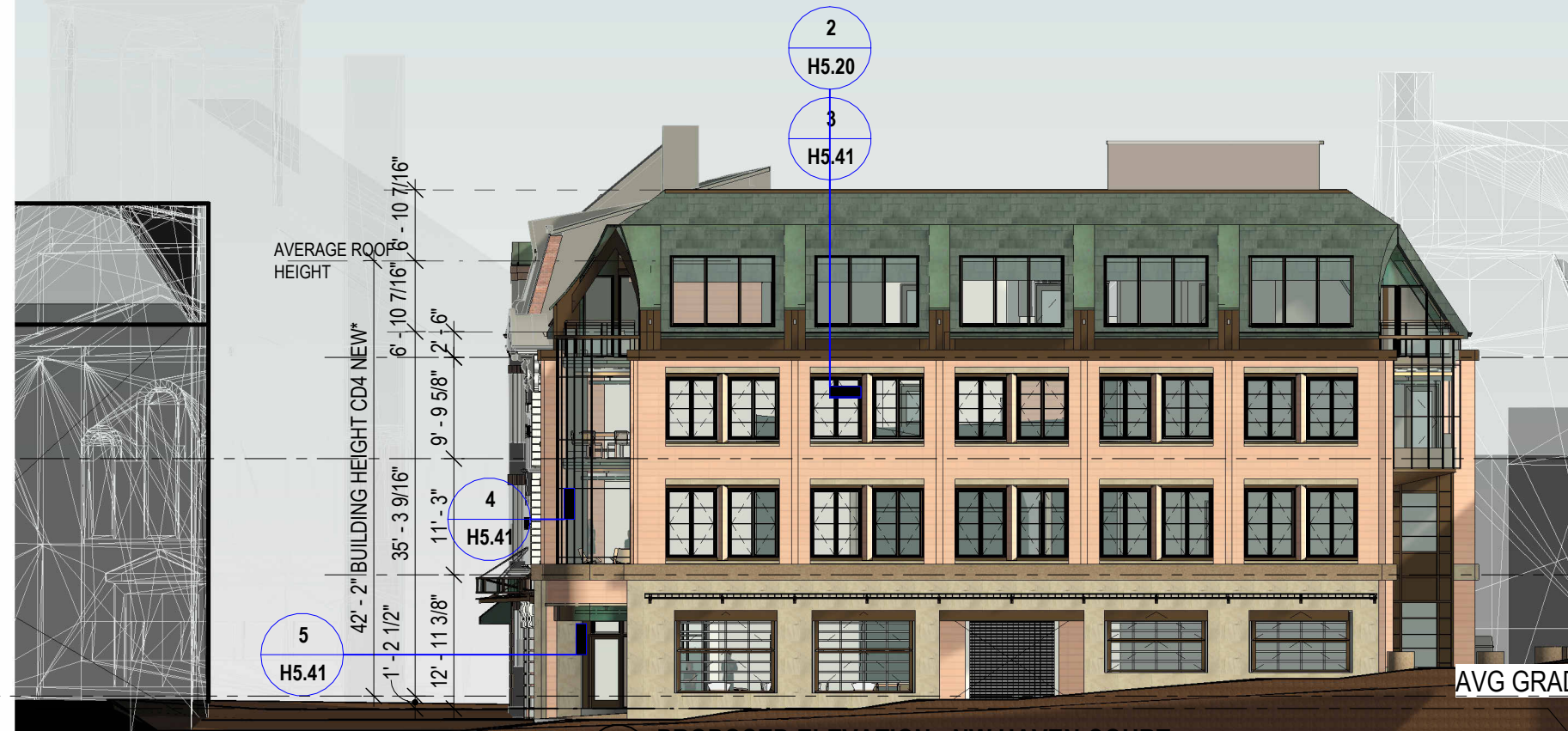
3 HDC AWNING DETAIL
1/2" = 1'-0"

H5.22 ELEVATION - HIGH STREET
1 CONGRESS STREET
SCALE: As indicated
7/12/2022

* FOR AVERAGE GRADE PLANE OF TOTAL BUILDING SEE SHEET H5.16



2 NORTH ELEVATION - HIGH STREET & HAVEN COURT (OBLIQUE)
1/16" = 1'-0"



AVERAGE ROOF
HEIGHT

42' - 2" BUILDING HEIGHT CD4 NEW*

6' - 10 7/16" 6' - 10 7/16"

35' - 3 9/16" 11' - 3" 9' - 9 5/8" 2' - 6"

1' - 2 1/2" 12' - 11 3/8"

1 PROPOSED ELEVATION - NW HAVEN COURT
1/16" = 1'-0"

ATTIC
62' - 1 1/4"

LEVEL 3
52' - 3 5/8"

LEVEL 2
41' - 0 5/8"

AVG GRADE CD4 NEW*
29' - 3 3/4"

LEVEL 1
28' - 1 1/4"

H5.23 ELEVATIONS - HAVEN COURT 1 CONGRESS STREET

SCALE: 1/16" = 1'-0"
7/12/2022

* FOR AVERAGE GRADE PLANE OF TOTAL BUILDING SEE SHEET H5.16



H5.24 SW ELEVATION - REAR ALLEY
1 CONGRESS STREET

SCALE: 1/16" = 1'-0"
7/12/2022

* FOR AVERAGE GRADE PLANE OF TOTAL BUILDING SEE SHEET H5.16



COPYRIGHT © 2022



H5.31 BIRDSEYE AXONOMETRIC
1 CONGRESS STREET
SCALE:
7/07/2022



H5.32

VIGNETTE - CONGRESS STREET
1 CONGRESS STREET

SCALE:
6/17/2022



H5.33 VIGNETTES - HIGH FROM CONGRESS
1 CONGRESS STREET

SCALE:
6/17/2022



H5.34

**HIGH STREET FROM STARBUCKS
1 CONGRESS STREET**

SCALE:
6/17/2022



H5.35. VIGNETTE - HAVEN CT FROM LADD ST
1 CONGRESS STREET
SCALE:
6/17/2022



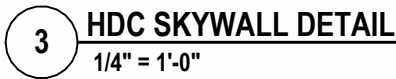


H5.36 VIGNETTE - HIGH AT LADD & HAVEN
1 CONGRESS STREET

SCALE
6/17/2022

TANGRAM 3DS





ARCVOI
ARCHITECTS

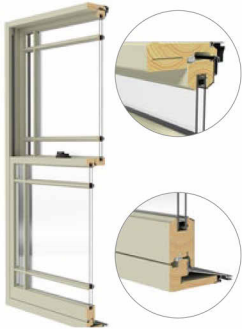
COPYRIGHT © 2022

Pella® Architect Series®
Traditional Wood & Clad/Wood



Expertly crafted wood windows and patio doors with nearly endless possibilities.

Double-Hung Interior



Double-Hung Exterior



Available in these window and patio door styles:



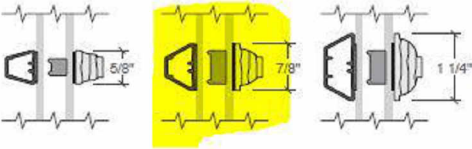
Special shape windows also available.

^{1,2} See back cover for disclosures.

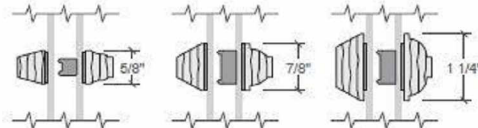
- **Designed with distinguished details**
Crafted with classic aesthetics to make a statement and add architectural interest to your project, inside and out.
- **Enhanced style options and custom capabilities**
Maximum design flexibility with dramatic sizes, custom colors, finishes, profiles, product types and more.
- **Authentic look of true divided light**
Pella's Integral Light Technology[®] grilles use a metal spacer to create the authentic look of true divided light by casting a more realistic shadow.
- **Interior finish options**
From light to dark, Architect Series - Traditional wood windows and patio doors are available in an array of classic and on-trend colors. Pine interiors are available in a variety of paint and stain colors.
- **Beautiful hardware**
Choose from Pella's collection of rich patinas and other timeless finishes.
- **Optional integrated security sensors**
Built-in security sensors allow homeowners to know when their windows and doors are open or locked, while being virtually invisible when the product is closed.
- **ENERGY STAR[®] certified¹**
Pella products offer energy-efficient options that will meet or exceed ENERGY STAR guidelines in all 50 states. Pella Architect Series - Traditional products with triple-pane glass have been awarded the ENERGY STAR Most Efficient Mark in 2022.²
- **Long-lasting durability**
Aluminum-clad exteriors with EnduraClad[®] finish is applied in an overlapping fashion on windows for exceptional protection. Pella's exclusive EnduraGuard[®] wood protection is applied after the pieces have been cut and milled, but prior to final assembly.
- **Best limited lifetime warranty²**
Pella Architect Series - Traditional products are covered by the best limited lifetime warranty in the industry for wood windows and patio doors.²
- **Testing beyond requirements**
At Pella, our products are tested beyond requirements to help ensure they have long-lasting performance and reduce call-backs for you.

Integral Light Technology[®]

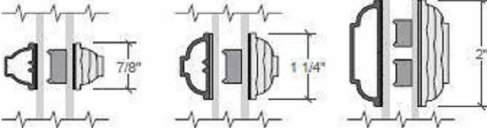
Putty and Ogee Glaze Grilles
Clad Exterior - Wood Interior



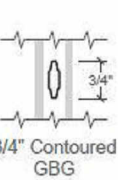
Putty and Ogee Glaze Grilles
Wood Exterior - Wood Interior



Ogee Glaze Grilles
Clad Exterior - Wood Interior



Contoured Aluminum -
Grilles-Between-the-Glass



Colors

Wood Types

Wood species for complementing your project's interior.



Pine

Prefinished Pine
Interior Colors

Custom interior finishes, unfinished or primed and ready-to-paint are also available.

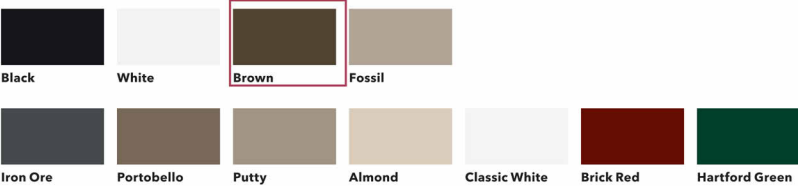


Aluminum-Clad
Exterior Colors

Our low-maintenance EnduraClad[®] exterior finish resists fading. Take durability one step further with EnduraClad Plus which also resists chalking and corrosion.⁸

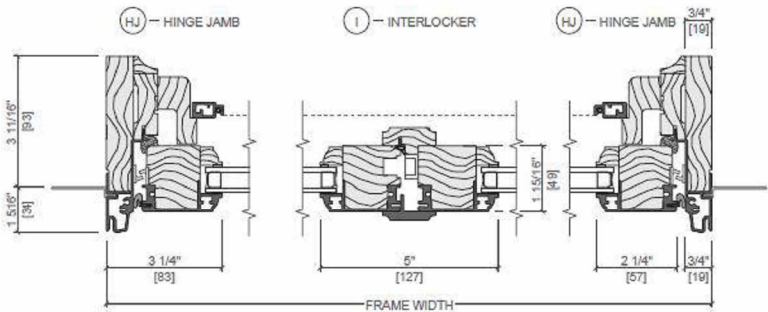
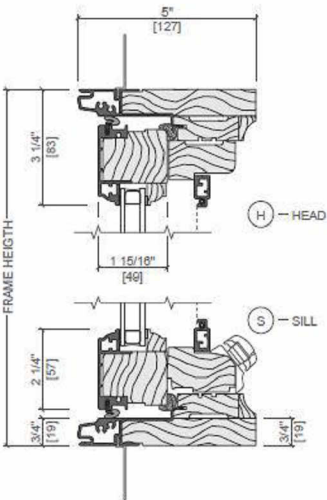
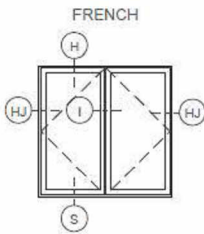


Custom colors are also available.



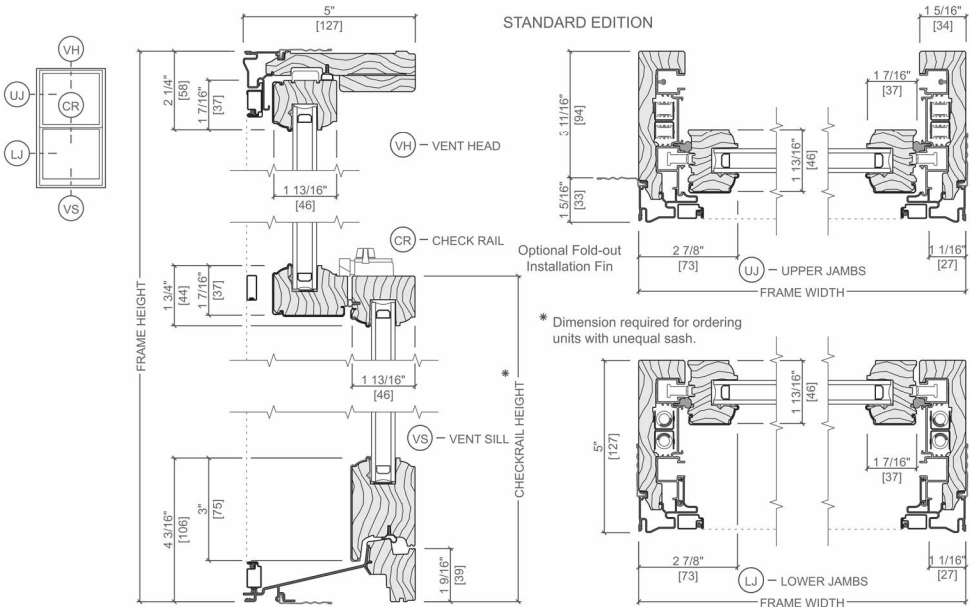
Pella® Reserve™ Out-Swing French Casement Window

Unit Sections - Aluminum-Clad Exterior



Architect Series® Traditional Hung Window

SE Unit Sections - Aluminum-Clad Ogee Exterior Glazing Profile



H5.50 MATERIALS - WINDOWS
1 CONGRESS STREET
SCALE:
6/17/2022



COPYRIGHT © 2022



CROWN LIFTING BIFOLDING DOORS

For additional information, please review our installation video:
https://youtu.be/BdnS8M6_oto

Page 1

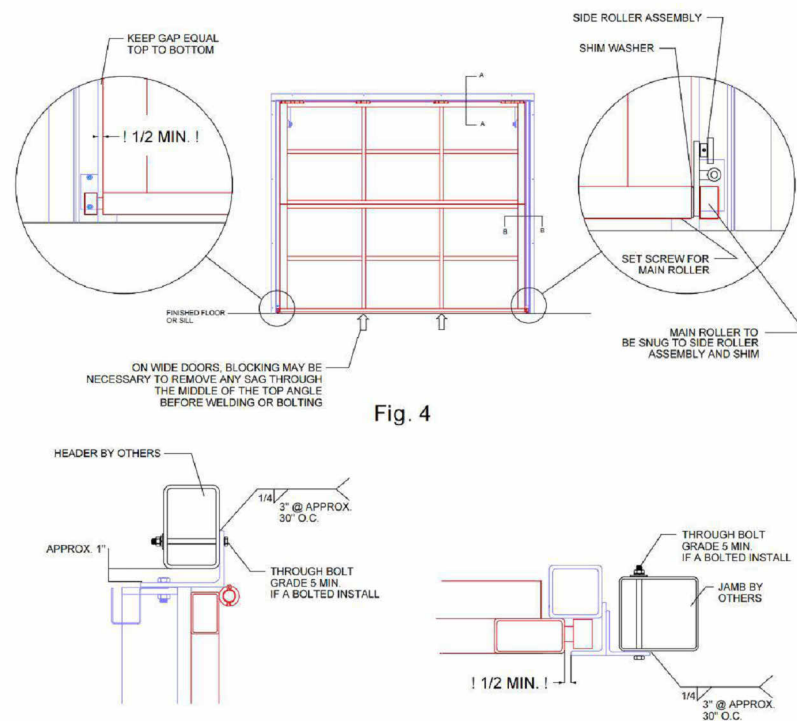


Fig. 4

Fig. 5

SECTION A-A

SECTION B-B



Northlight 25-90°

Similar to Longlights, Northlights are bands of VELUX Modular Skylights. The characteristic upright design is primarily for installations that are directed towards the northern hemisphere for soft and reflected lighting. Northlight installations are applicable for a pitch of 25 to 90°.



Download
CAD & BIM
objects

At the bottom, Northlights are mounted on a standard steel profile, 100 mm wide (not a VELUX component) and fixed with clamps holding the skylight in place. At the top, the brackets are fixed to the sub-construction with screws meant for wood.

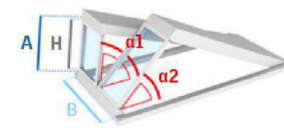
The prefabricated modular flashing ensures easy integration in the roof surface. All flashings are easily installed. The roof surface underneath the flashing must be appropriate for screw fixation.

Please observe a max. 10 m wall height above skylight module, when installed in a sloped roof. Take notice that the top flashing changes in size above and below 54°, see sectional drawing page 59.

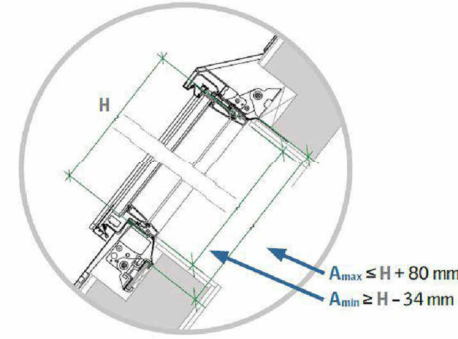
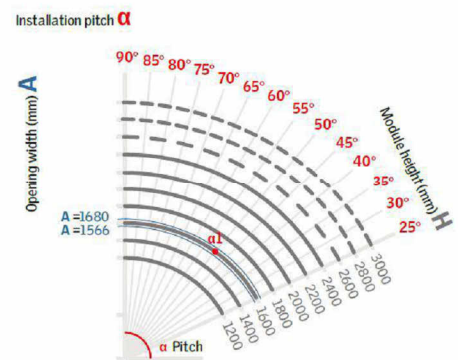
Sub-construction for
Northlight at:
veluxcommercial.com

Defining module size to your project

Example:
 $\alpha 1$: $H = 1600$ mm at an installation pitch of 50°
 $A_{max} = 1680$ mm
 $A_{min} = 1566$ mm



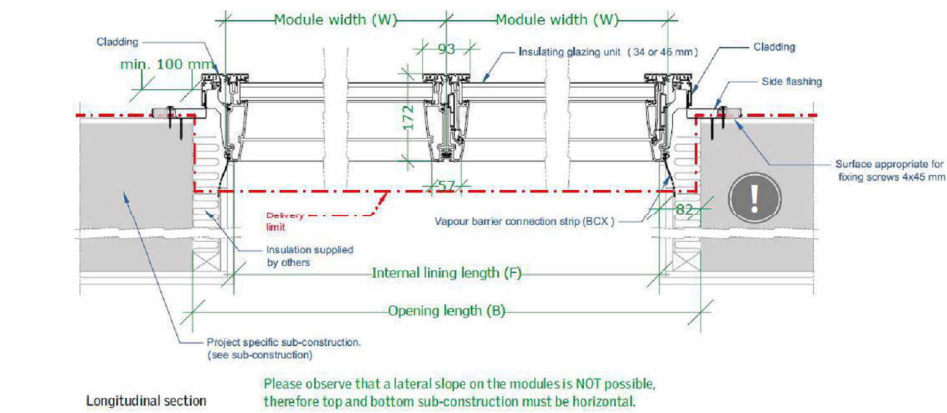
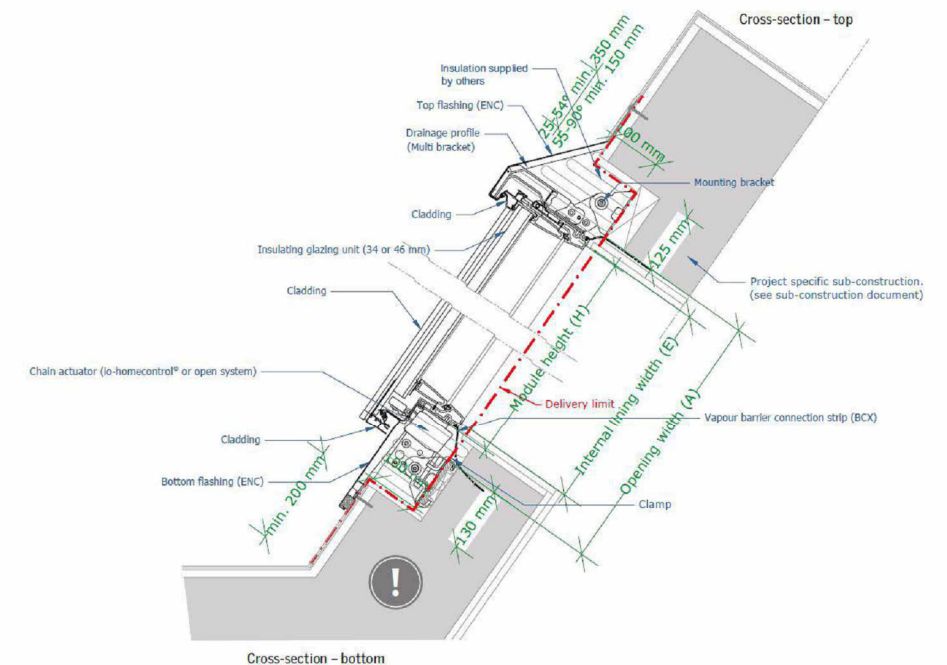
H: Module height
 α : Installation pitch
A: Opening width
B: Opening length



58 — Not available as venting modules as default.

ROOF WINDOWS - VELUX "NORTHLIGHT"

Sectional drawings



VELUX Commercial 59

STOREFRONTS

WINDOWS • CURTAIN WALLS • ENTRANCES • STOREFRONTS

Series 403X

2" x 4 1/2" Thermal Storefront Framing

CONFIGURATIONS

Shear Block • Screw Spline

This innovative flush glaze storefront framing system utilizes a dual pour and debridge thermal barrier that provides outstanding energy efficiency. Available in either shearblock or screw spline construction, the 403X Series can be used in conjunction with virtually all EFCO entrance systems and V410 vents. A variety of options are available for use with this system, including sunshade mullions and variable sight line horizontals. Steel reinforcement is also available to enhance structural capability.

Features

Dual pocket thermal barrier framing

Screw spline or shearblock construction

The optional Roto-Vent™ ventilator

2-way (90° and 135°) and 3-way corner mullions

0°-15° and 15°-30° variable mullions

Accommodates up to 1 1/16" glazing

Uniform glazing gasket is used for exterior and interior

Various height intermediate horizontals and sills

Accessory line of perimeter anchors, pocket fillers, door adaptors, etc.

Anodized or painted finishes available

Benefits

Enhanced thermal performance and reduced energy cost

Decreases installation labor and cost

Ability to erect on the job site

Allows fresh air into the room, yet maintains security

Multifaceted elevations for design flexibility

Increased design flexibility

Expands design and energy savings options

Allows optimized use of gasket and reduces inventory

Simplifies ordering and installation

Ability to maintain desired sight line

Increased product versatility

Multiple options to answer economic and aesthetic concerns

© Copyright 2015 EFCO Corporation 05/15

1000 COUNTY RD • MONETT, MO 65708 • 800.221.4169 • efcocorp.com

COATINGS
FINISHES
COLORS

ULTRAPON (70% PVDF)

STANDARD

FEATURED

Bone White

White

Antique White

Herring Bone

Ivy

Hartford Green

Mesa Brown

Mineral Brown

Gray

Aged Copper

Blue Sky

Brick Red

Legacy Blue

Denim Blue

Light Brown

Pueblo Tan

Black

ULTRA-ESCENT II (70% PVDF MICA*)

STANDARD

FEATURED

Weathered Copper

Slate

Raw Sierra

Warm Silver

Sea Spray

Asi

Gun Barrel

Saddle Bronze

Champagne

Azure Gold

ANODIZE

Clear

Champagne

Light Bronze

Medium Bronze

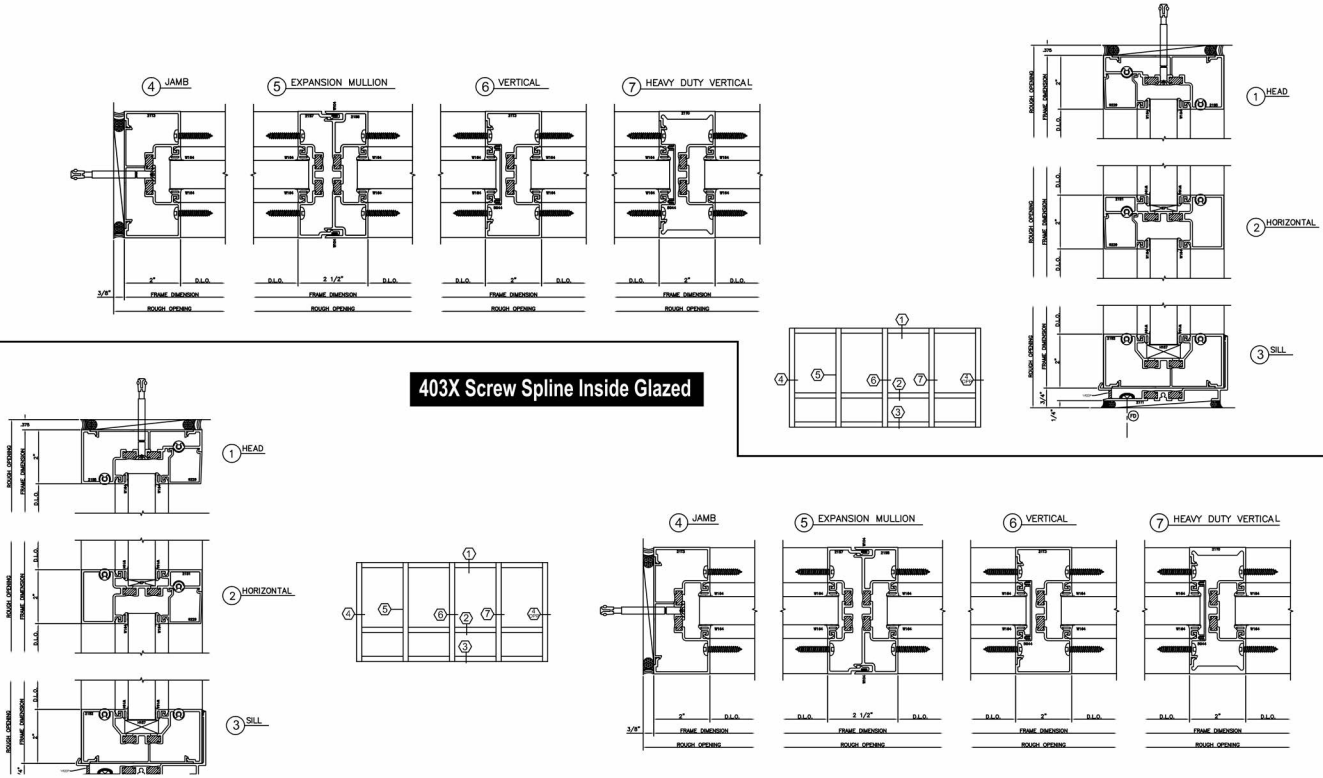
Dark Bronze

Black

* The color samples shown are not the actual paint. These paint colors represent the production colors as closely as possible within the limitations of color-chip reproduction.
* Additional changes may apply to specific colors that require a clear topcoat, metallic colors, custom color matches.
* Color variation is inherent in, and should be expected with Mica/Ultra-Escent II paint finishes. Laboratory prepared samples will appear different from production-run material.

reproduction 05/15

403X Screw Spline Outside Glazed Stops Down



STOREFRONT TRANSOMS

3M™ Dichroic Film for Laminated Glass

Compatible with EVA, SentryGlas® or PVB interlayer adhesives. Available in gold-blue or copper-bronze colors.

Flexible

Film can be printed, cut, patterned, bent, or combined with different glass types or interlayer adhesives.

Versatile

Applications include shading fins, balustrades, exterior glass, partition walls, shower doors, artistic glass and furniture.

Gold-Blue Dichroic Film



In Transmission (Shown)

In Reflection

Yellow ► Magenta ► Blue

Gold (straight) Blue (angle)

Copper-Bronze Dichroic Film



In Transmission (Shown)

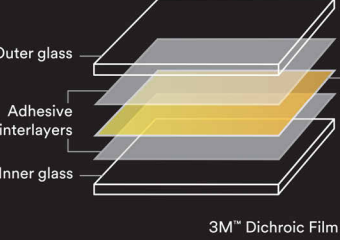
In Reflection

Magenta ► Blue ► Aqua

Copper (straight) Bronze (angle)

How is it made?

3M™ Dichroic Film is easily laminated between sheets of adhesive interlayers. It's conformable for bent glass applications and works with different glass and PVB combinations.



Solar performance of clear laminated glass

	Reflection Visible	Transmission Visible	Transmitted Energy	Reflected Energy	Absorbed Energy	TSER	SHGC
Gold-Blue Dichroic Glass	89%	11%	56%	29%	15%	39%	0.61
Copper-Bronze Dichroic Glass	29%	71%	55%	29%	17%	41%	0.59

Make an impression at 3M.com/Glass.

Technical Information: The technical information, recommendations and other statements contain information is not guaranteed.

Product Use: Many factors beyond 3M's control and uniquely within user's knowledge and control and performance of a 3M product, user is solely responsible for evaluating the 3M product and determining its suitability for a particular application.

Warranty, Limited Remedy, and Disclaimer: Unless an additional warranty is specifically stated on the product, 3M MAKES NO OTHER WARRANTIES OR CONDITIONS OF MERCHANTABILITY OR FITNESS FOR A PARTICULAR PURPOSE OR ANY IMPLIED WARRANTY TO THE CONTRARY, then the sole and exclusive remedy is, at 3M's option, replacement of the 3M product.

Limitation of Liability: Except where prohibited by law, 3M will not be liable for any loss or damage, including warranty, contract, negligence or strict liability.



Renewable Energy Division
3M Center, Building 235-2S-27
St. Paul, MN 55144-1000
3M.com/glass



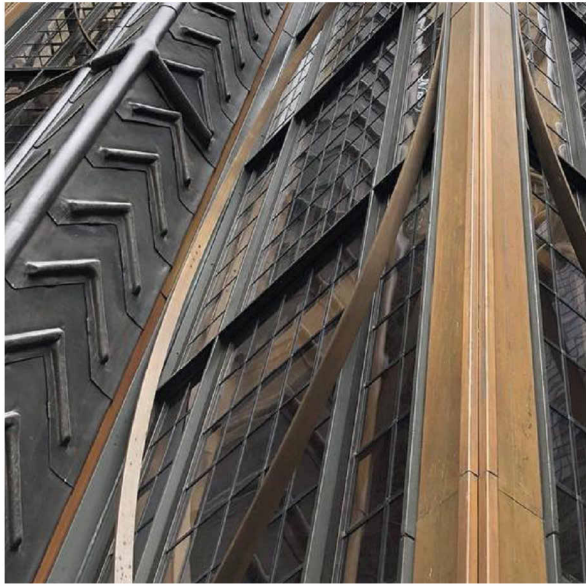
H5.52

MATERIALS - ARCADE FENESTRATION

1 CONGRESS STREET

SCALE:
6/17/2022

COPYRIGHT © 2022

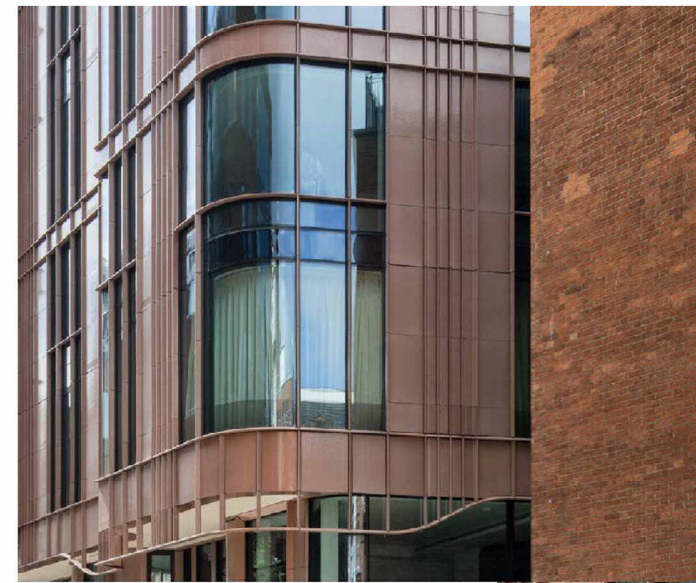
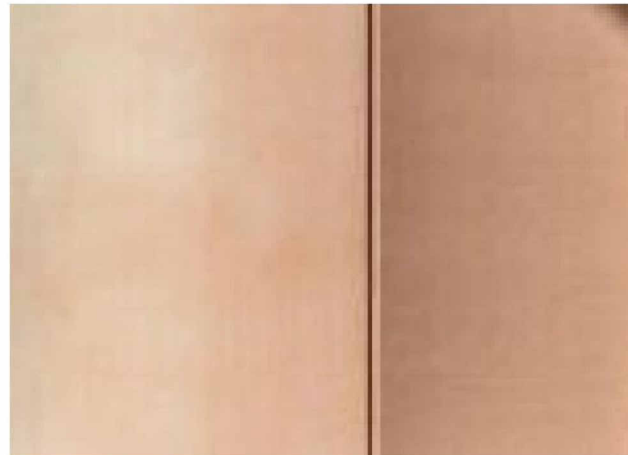


BRONZE FINISH - METAL ACCENTS -
WINDOW & DOOR FRAMES,
AWNINGS, DORMER LEVEL CLADDING.

Upper walls, cladding

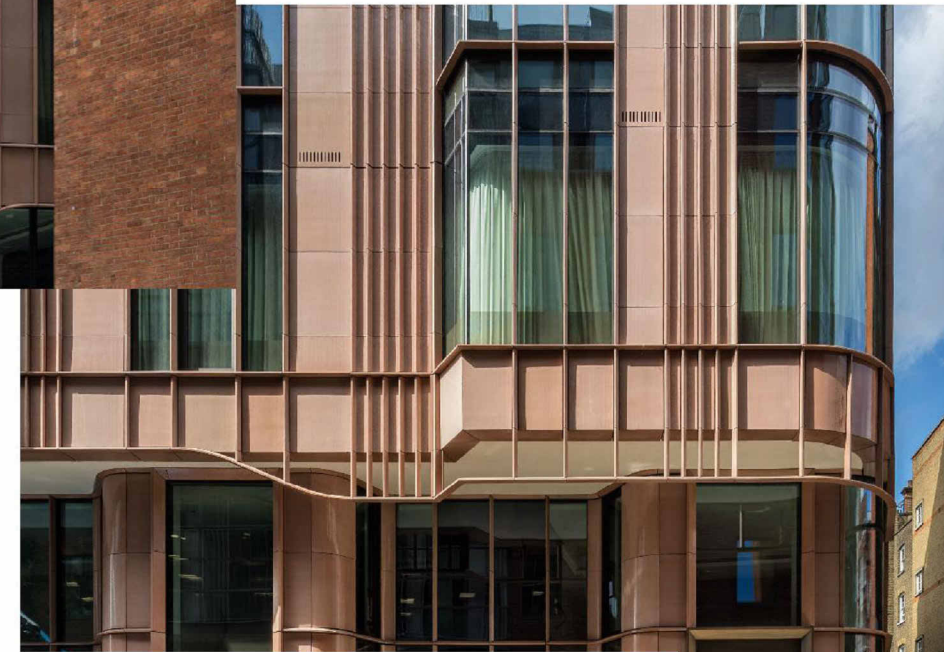
Terra Cotta, glazed tile

TERREAL, PITERAK SLIM



Marylebone Lane Mansion
London

Glaze color: Tea with Milk



Lower walls, cladding

Granite



Deer Isle

At restored Facades



Carolina Coral

First floor addition, field color



Autumn Pink

First floor addition - accent color

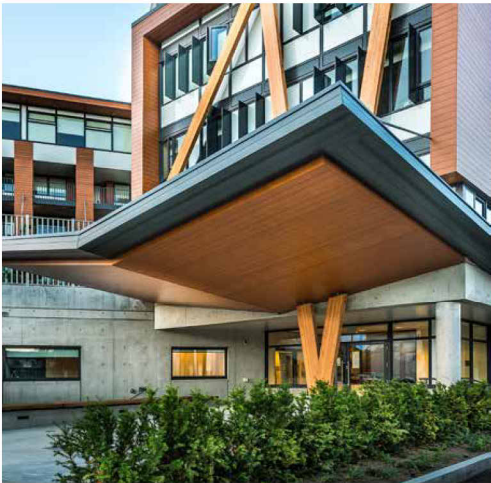


Piterak Slim Terracotta Cladding

H5.53 MATERIALS - CLADDING
1 CONGRESS STREET

SCALE:
6/17/2022

SOFFIT-CEILING AT ARCADE DROP-OFF



- thermally broken
- made of light weight aluminum
- supports continuous insulation
- creates a rain screen
- response time within 24 hours
- supports other cladding up to 8 lbs per sq ft.
- adjustable for sub-wall misalignment
- health product declarations
- support for specifications + drawings
- built for seismic zones



easy to use	quick delivery
solid warranty	durable finishes

longboardproducts.com



LONGBOARD®

WOODGRAIN OPTIONS

Our woodgrain options are divided into four categories based on the consistency of the wood grain pattern.

CONSISTENT



DARK ACACIA



DARK BAMBOO



LIGHT BAMBOO



DARK FIR



LIGHT FIR



DARK KNOTTY PINE



LIGHT OAK



DARK WALNUT



ITALIAN ROSEWOOD



WHITE OAK

COMPOSITE WALL PANELS (ELEVATOR OVER-RUN AND RECESSED ACCENTS)

ALUCOBOND Products

PROPERTIES AND BENEFITS

- Flatness and Rigidity
- Lightweight
- Durability
- Custom color expertise
- Formability
- Ease of fabrication
- Perforation capabilities
- 89 stocked ACM colors
- Complementary flat aluminum sheet colors
- Can contribute toward LEED points
- 100% recyclable
- Zero VOC's emitted in use
- EPD in compliance with International ISO Standards

ALUCOBOND® PLUS

4mm ACM comprised of two sheets of smooth .020" aluminum thermobonded to a solid, fire retardant core. Developed exclusively to meet fire performance requirements while providing the benefits & versatility of ACM.



ALUCOBOND® AXCENT™

A solid .040" flat aluminum sheet that offers the perfect complement to ALUCOBOND PLUS. AXCENT is excellent for columns, parapet caps, canopies, soffits, and trim.



Product Properties	
Thickness of aluminum skin	0.020" (nominal)
Product thickness	0.157" (4mm nominal)
Weight	1.56 lb/ft²
Standard panel dimension*	62" x 196"
Maximum width**	62"
Maximum length**	400"

* Exceptions to standard dimensions include mirror, print, and others. Refer to product range table on next page.
** Sheets will be fabricated to meet custom panel sizes within product range above.

Product Properties	
Product thickness	0.040" (nominal)
Weight	0.56 lb/ft²
Standard width	48"
Standard length	120"

ALUCOBOND®
GIVING SHAPE TO GREAT IDEAS

ALUCOBOND® EasyFix™

ALUCOBOND EasyFix is a cost-effective installation method for wood-frame construction in multifamily and mixed-use sectors. The simple installation method utilizes an innovative design for attachment of ALUCOBOND PLUS panels. The design provides an aesthetic solution similar to traditional ACM systems.

- ALUCOBOND EasyFix must be used with:
- ALUCOBOND PLUS
 - ALUCOBOND EasyFix: Clips or Rails



Product Properties	
Weight	1.9 lb/ft²
Weight	1.56 lb/ft²
Standard panel dimension*	40" x 196"
Maximum panel width/length	62"/400"
Clip length	3"
Rail length	12'

** Sheets may be fabricated to meet custom panel sizes within maximum product range above.

The Classic Collection

Statuary Bronze PVDF 2 Gloss 25-35	New-Age Dark Bronze Mica PVDF 2 Gloss 20-30	Orchard Mica PVDF 2 Gloss 15-25	Aztec Bronze Metallic PVDF 2 Gloss 15-25	Hazelnut Mica PVDF 2 Gloss 15-25	Russet Mica PVDF 2 Gloss 15-25
Burge PVDF 2 Gloss 35-45	Castle Gray PVDF 2 Gloss 25-35	SLR Champagne Metallic PVDF 2 Gloss 20-30	Arctic Satin Mica PVDF 2 Gloss 20-30	Emerald Champagne Metallic PVDF 3 Gloss 25-35	Harvest Gold Mica PVDF 2 Gloss 20-30
Oyster PVDF 3 Gloss 20-30	Alabaster PVDF 1 Gloss 25-35	Bone White PVDF 3 Gloss 25-35	Cadillac White II PVDF 2 Gloss 30-40	Pure White (RVE) PVDF 1 Gloss 25-35	RWH Bio White PVDF 3 Gloss 40-50
Magnolia PVDF 2 Gloss 30-40	Market Pearl White Mica PVDF 2 Gloss 25-35	Sunrise Silver Metallic II PVDF 3 Gloss 25-35	Brilliant Silver Metallic II PVDF 3 Gloss 25-35	Silver Metallic PVDF 1 Gloss 25	Champagne Metallic PVDF 1 Gloss 25-35
Platinum Mica PVDF 2 Gloss 15-25	Amalfi Clear Mica PVDF 2 Gloss 15-25	Castel Gray PVDF 2 Gloss 20-30	West Pointer Mica II PVDF 2 Gloss 15-25	Seashell Gray Metallic PVDF 2 Gloss 15-25	SLR Gray Metallic PVDF 1 Gloss 25-35
Steel City Silver Mica PVDF 2 Gloss 15-25	MDD Gray Mica II (Lease) PVDF 2 Gloss 30-40	Graphwood PVDF 2 Gloss 5-15	Antique Silver Metallic PVDF 3 Gloss 70-80	Graphite Mica SMP Gloss 20-30	Gray SMP SMP Gloss 45-55

The Classic Collection (continued)

Dusty Charcoal II PVDF 2 Gloss 25-35	Focus Black II PVDF 3 Gloss 25-35	TBL Black (Bulk) SMP Gloss 70-80	Tecora Black SMP Gloss 25-35	Black Metallic PVDF 3 Gloss 75-85	Tuscan Sun PVDF 3 Gloss 25-35
Sage Blue II PVDF 2 Gloss 25-35	Azure Blue PVDF 3 Gloss 25-35	Ultramarine Blue SMP Gloss 25-35	Electric Blue II SMP Gloss 65-75	Image Blue SMP Gloss 25-35	Amazons Prime Blue (Perman 296C) PVDF 3 Gloss 25-35
Just Purple PVDF 2 Gloss 25-35	Red Fire PVDF 3 Gloss 25-35	Parade Red SMP Gloss 45-55	Cash Red SMP Gloss 75-85	Botanical PVDF 2 Gloss 25-35	Kinky Green PVDF 3 Gloss 25-35

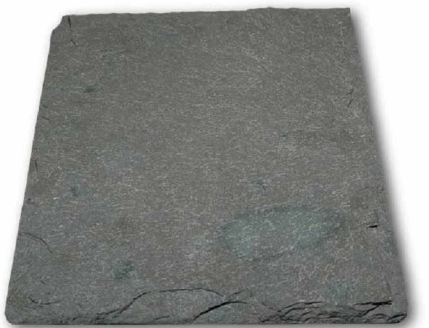
The Spectra Collection

Ocean PVDF 2 Gloss 70-80	Galaxy Blue PVDF 2 Gloss 70-80	White Gold PVDF 2 Gloss 70-80	Copral PVDF 2 Gloss 70-80	Solera PVDF 2 Gloss 70-80
--------------------------------	--------------------------------------	-------------------------------------	---------------------------------	---------------------------------

The Anodized Collection*

Clear Anodized Gloss 15-25	Light Bronze Anodized Gloss 15-25	Medium Bronze Anodized Anodized Gloss 15-25	Dark Bronze Anodized Gloss 15-25	Black Anodized Gloss 15-25
-------------------------------	--------------------------------------	---	-------------------------------------	-------------------------------

ROOFING - NATURAL SLATE



GRAY-GREEN, SEMI-WEATHERING NATURAL SLATE; VERMONT SLATE

H5.54 MATERIALS - CLADDING
1 CONGRESS STREET
SCALE:
6/17/2022

