

# 93 PLEASANT STREET



## PROJECT SUMMARY: NEW CONSTRUCTION ADDITION & RENOVATIONS

OFFICE USE, NEW STRUCTURE LOCATED AT PARKING LOT BEHIND TREADWELL-JENNESS HOUSE.  
2 STORIES + 3RD SHORT STORY, 1 LEVEL UNDERGROUND PARKING.

## DRAWING LIST

P0.1 COVER  
P1.3 ROOF PLAN  
P1.8 FRONT PERSPECTIVE  
P1.9 FRONT ELEVATION - WEST/PLEASANT ST  
P1.10 FRONT ELEVATION - SOUTH/COURT ST  
P1.11 SIDE ELEVATION - EAST  
P1.12 REAR ELEVATION - NORTH

### REVISIONS TO PREVIOUSLY APPROVED APPLICATION:

1. CHANGE COMPOSITE BORAL POLYASH SIDING TO FIBER CEMENT SIDING, TO MEET FIRE RATING REQUIREMENTS.
2. RAISE ROOF OVER REAR STAIR BY 1'-4" TO COORDINATE WITH STRUCTURAL REQUIREMENTS.
3. WINDOWS (REVISIONS TO COORDINATE WITH FOUNDATION STRUCTURE AND INTERIOR STAIR AND WALLS LAYOUT):
  - ADD 4 NEW BASEMENT WINDOWS IN WINDOW-WELLS AT WEST (PLEASANT ST) ELEVATION
  - REPLACE EXISTING SOUTH (COURT ST) BASEMENT WINDOWS WITH SAME SIZE, IN-KIND (INSTEAD OF LOWERED SILLS)
  - CHANGE 3 DOUBLE-HUNG WINDOWS FROM 6/6 TO 3/3, AT REAR & SIDE ELEVATIONS
  - OMIT 6 WINDOWS AT REAR ELEVATION OF ADDITION
  - INFILL 4 EXISTING WINDOWS AT REAR OF SIDE ELL FOR FIRE RATING ON PROPERTY LINE
  - ADJUST 2 WINDOWS SLIGHTLY ON REAR ELEVATION FOR STAIR COORDINATION
4. REMOVE DECORATIVE ROOF DECK RAILING AT REAR.

P0.0

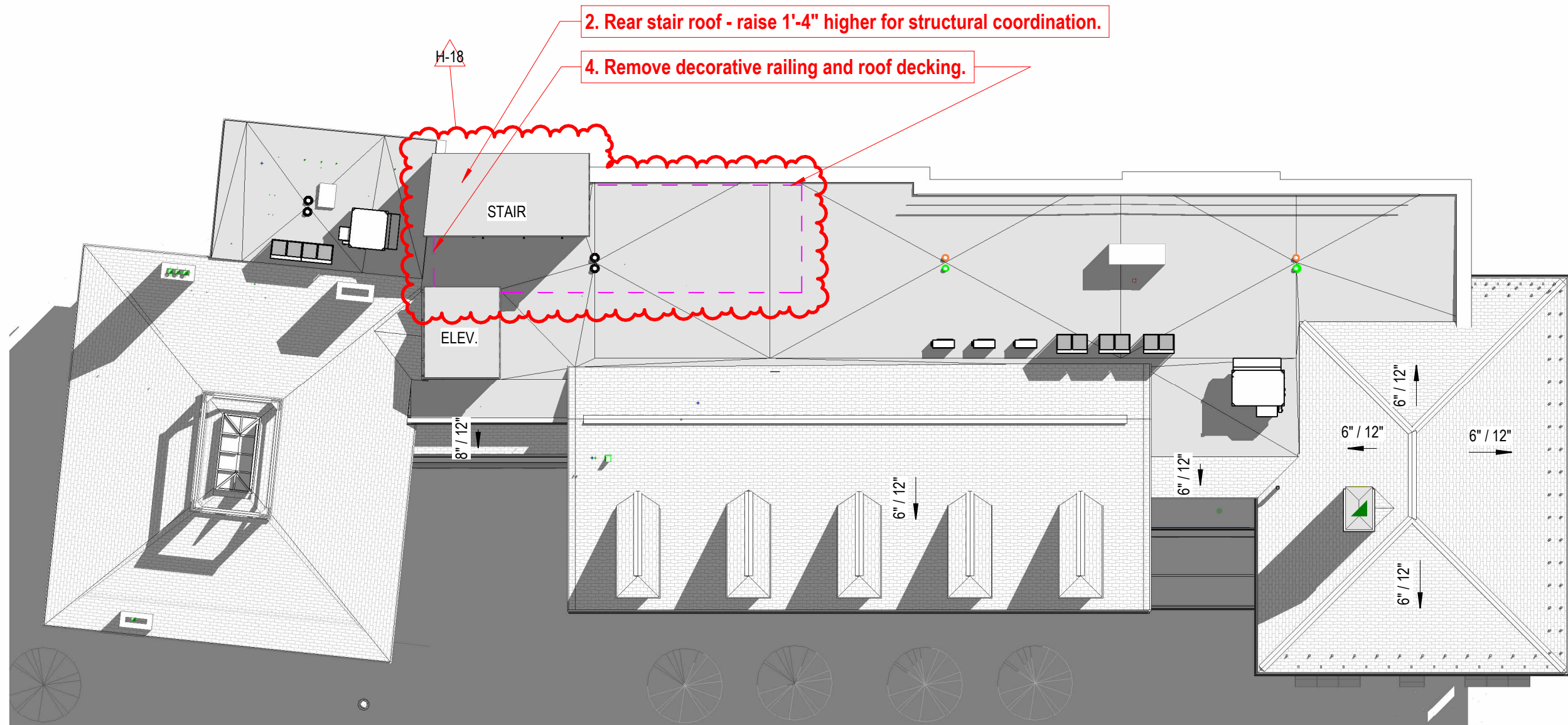
COVER

93 PLEASANT STREET

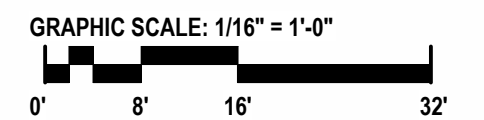
HDC REVISION 2  
12.01.2022



COPYRIGHT © 2022



ROOF LEGEND	
○ DS	DOWNSPOUT
----	GUTTER



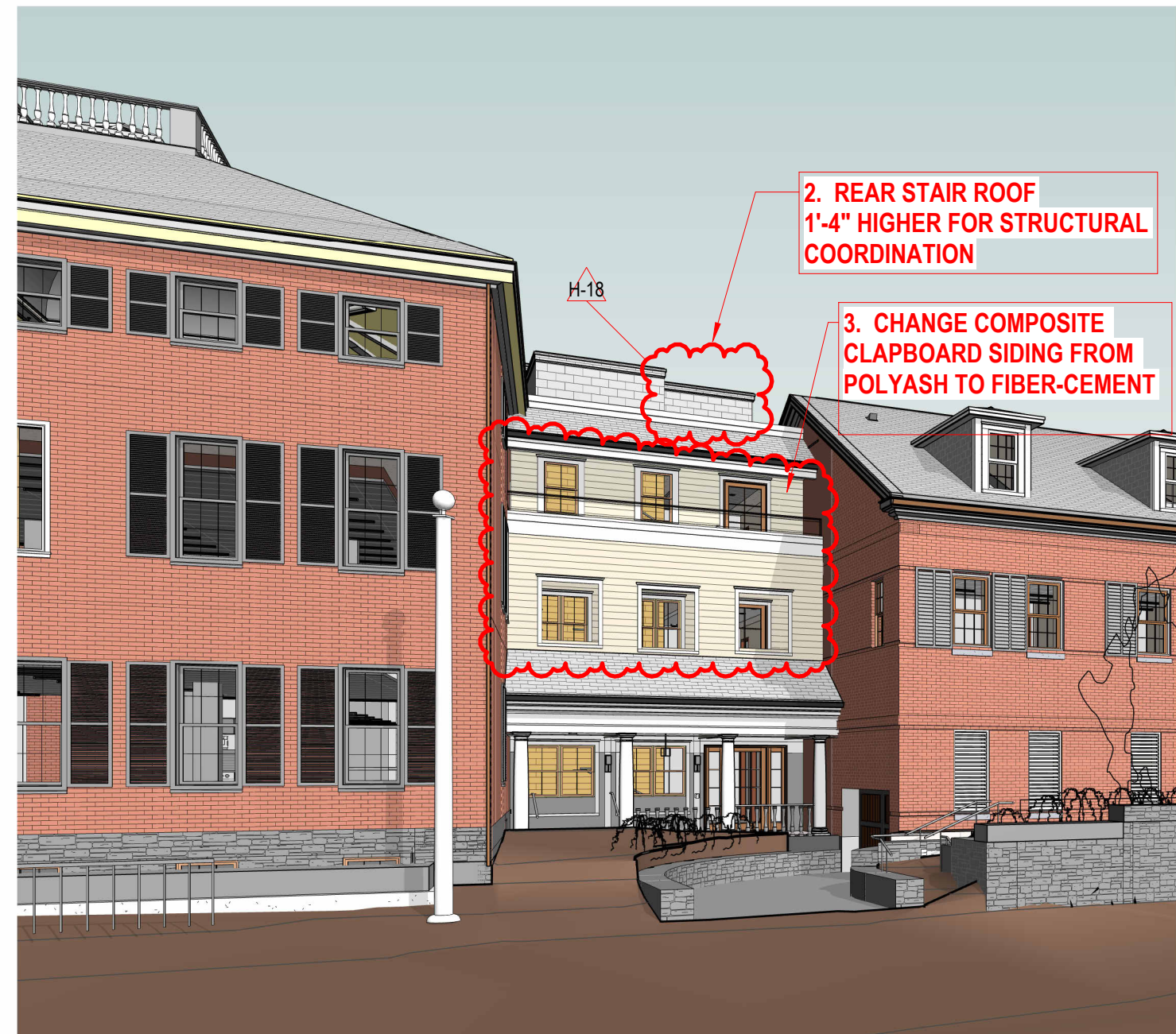
**P1.3** **ROOF PLAN**  
**93 PLEASANT STREET**  
 HDC REVISION 2  
 12.01.2022







PREVIOUSLY APPROVED



PROPOSED

**P1.8** PERSPECTIVE VIEW - SW  
93 PLEASANT STREET

12.01.2022



COPYRIGHT © 2022





Add 4 basement windows in window wells, to match existing south basement windows.

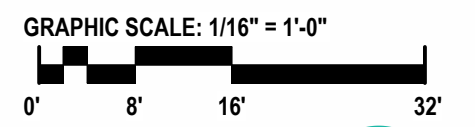
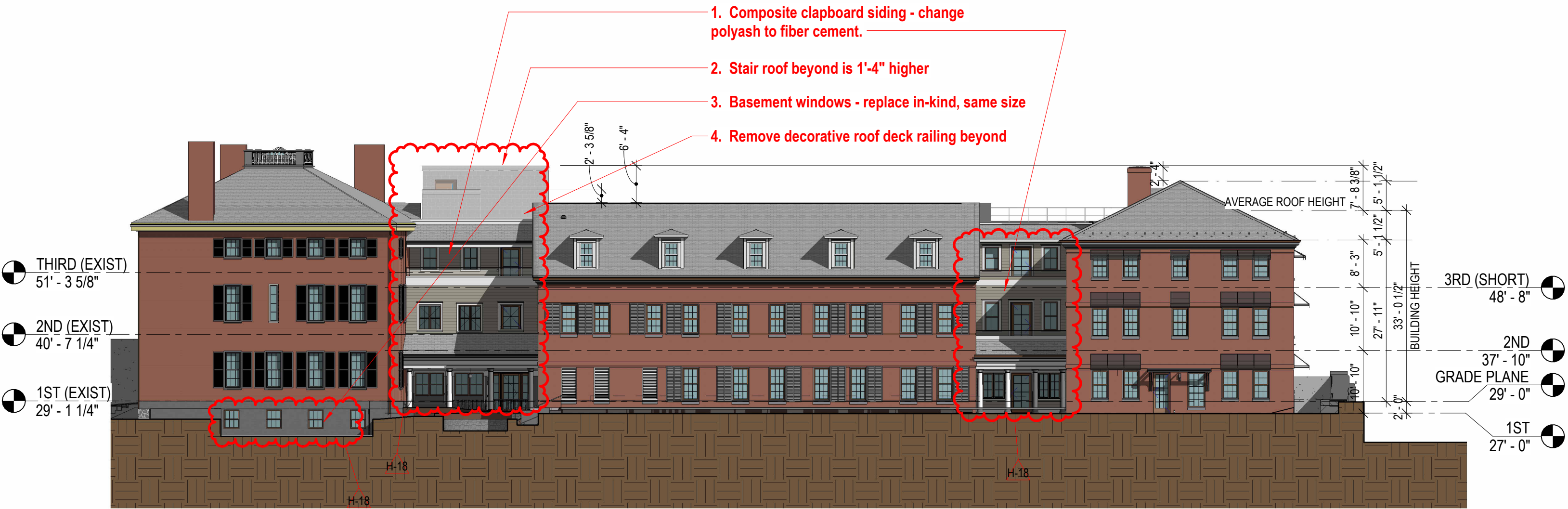
- NEW ACCESSIBLE RAMP WITH HANDRAILS
- NEW DOOR & TRANSOM, FLOOR LEVEL AT SIDE PORCH & ELL IS LOWERED 14"
- REMOVE EXISTING IRON GATE
- NEW GRANITE BASE UNDER EXISTING BALUSTRADE & COLUMNS

**P1.9 FRONT ELEVATION - WEST/PLEASANT ST  
93 PLEASANT STREET**

1/8" = 1'-0"  
12.01.2022







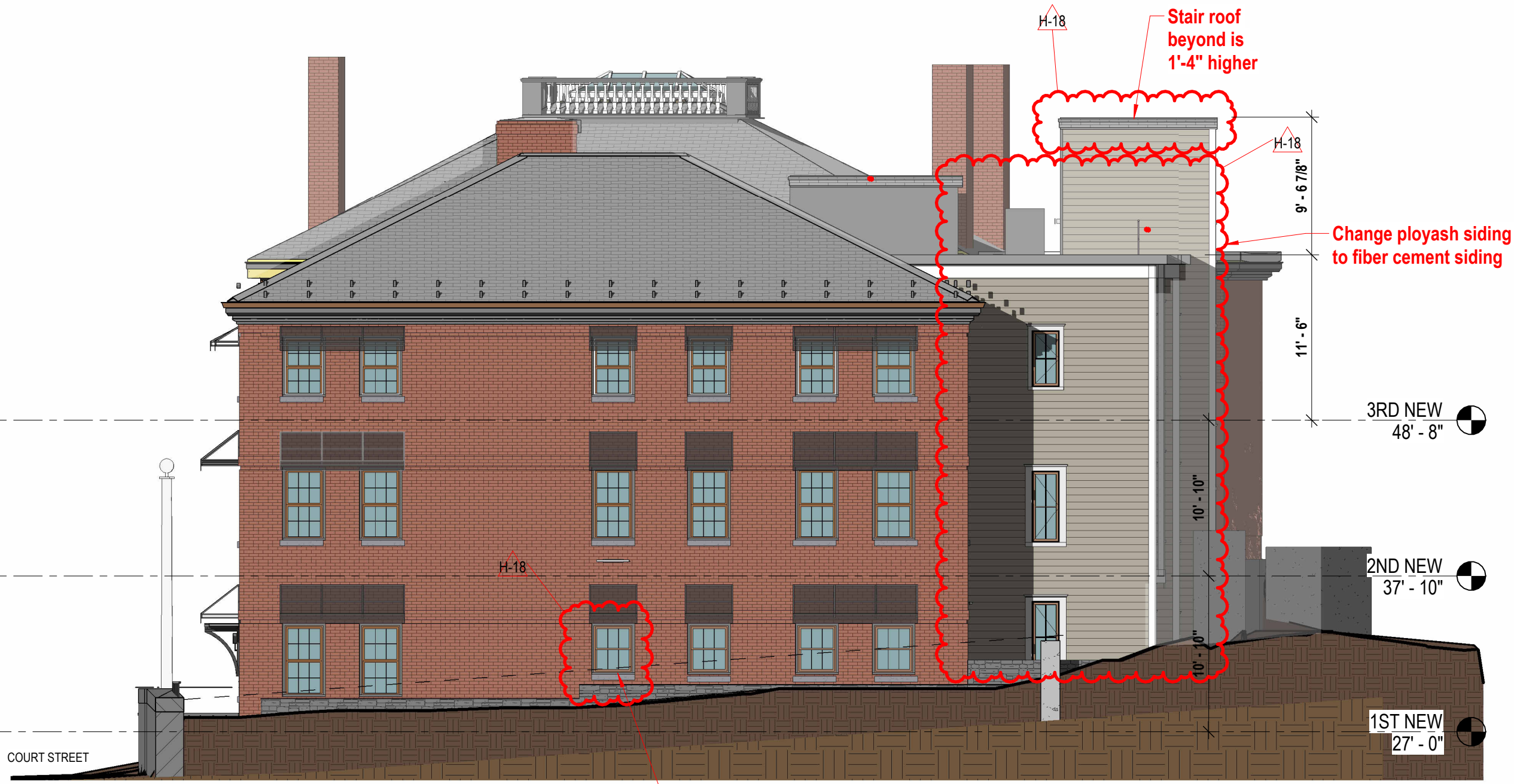
**P1.10** SOUTH ELEVATION - FRONT (COURT ST)  
**93 PLEASANT STREET**

HDC REVISION 2  
 12.01.2022

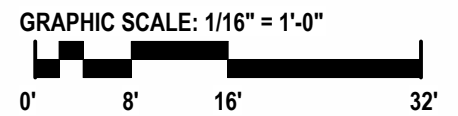




EXTERIOR LIGHTING LEGEND	
EL1	EXTERIOR LIGHTING - WALL SCONCE
EL2	EXTERIOR LIGHTING - HANGING LIGHT
EL3	EXTERIOR LIGHTING - SOFFIT COVE LIGHT
EL4	EXTERIOR LIGHTING - EMERGENCY LIGHT



Change 6/6 to 3/3, to coordinate with grade and foundation

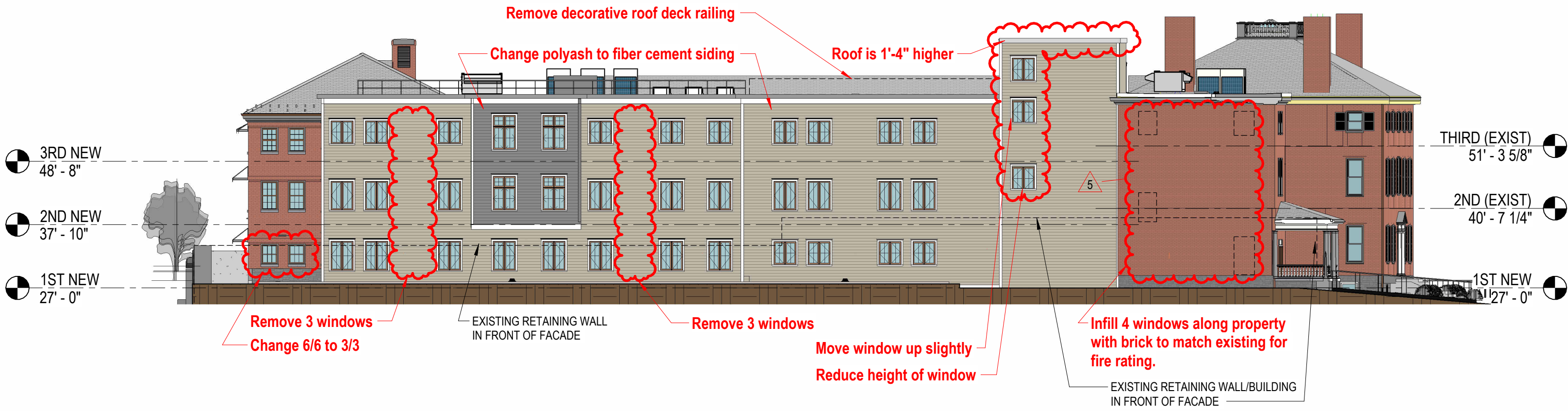


**P1.11 EAST ELEVATION - SIDE  
93 PLEASANT STREET**

HDC REVISION 2  
12.01.2022







EXTERIOR LIGHTING LEGEND	
EL1	EXTERIOR LIGHTING - WALL SCONCE
EL2	EXTERIOR LIGHTING - HANGING LIGHT
EL3	EXTERIOR LIGHTING - SOFFIT COVE LIGHT
EL4	EXTERIOR LIGHTING - EMERGENCY LIGHT

**P1.12** **NORTH ELEVATION - REAR**  
**93 PLEASANT STREET**  
 HDC REVISION 2  
 12.01.2022





# HardieTrim®

Form meets function at every angle with HardieTrim® boards. With an authentic look, HardieTrim boards provide design flexibility for columns, friezes, doors, windows and other accent areas.

Better than wood, it will complement your long-lasting, lower maintenance James Hardie® siding – adding punctuation to your design statement.

HardieTrim®  
Boards  
Khaki Brown

HardiePlank®  
Lap Siding  
Navajo Beige

The performance you require.

**THE DISTINCTIVENESS YOU DESIRE.**

# HardiePlank®

Thickness 5/16 in  
Length 12 ft planks

## SELECT CEDARMILL® & SMOOTH

	Width	5.25 in	6.25 in	7.25 in	8.25 in
Exposure		4 in	5 in	6 in	7 in
Prime Pcs/Pallet		360	308	252	230
ColorPlus Pcs/Pallet		324	280	252	210
Pcs/Sq		25.0	20.0	16.7	14.3

## SELECT CEDARMILL®



	Width	5.25 in	6.25 in	7.25 in	8.25 in
STATEMENT COLLECTION™		✓	✓		
DREAM COLLECTION™		✓	✓	✓	✓
PRIME		✓	✓	✓	✓

## SMOOTH



	Width	5.25 in	6.25 in	7.25 in	8.25 in
STATEMENT COLLECTION™		✓	✓		
DREAM COLLECTION™		✓	✓	✓	✓
PRIME		✓	✓	✓	✓

## BEADED CEDARMILL®

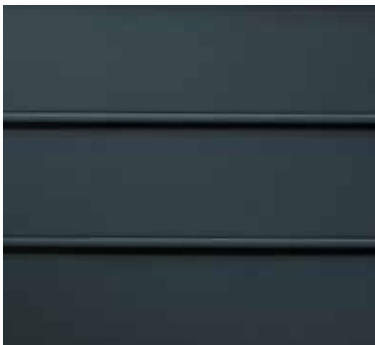


## BEADED CEDARMILL® & BEADED SMOOTH

Width	8.25 in
Exposure	7 in
Prime Pcs/Pallet	240
ColorPlus Pcs/Pallet	210
Pcs/Sq	14.3

STATEMENT COLLECTION™	_____
DREAM COLLECTION™	✓
PRIME	✓

## BEADED SMOOTH





# STATEMENT COLLECTION™

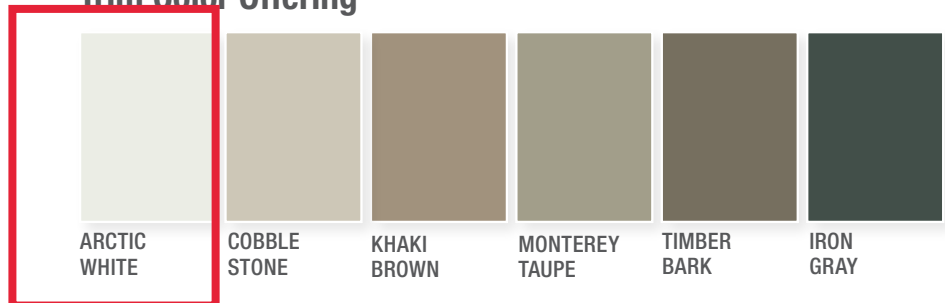
Make your next home stand out with our Statement Collection™ products. Carefully curated by our design experts specifically for your market, the collection brings together the most popular James Hardie ColorPlus® siding and trim styles, textures, and colors. This stunning selection is locally stocked and designed for simplicity - making it easier than ever to get a beautiful, long-lasting home exterior.

## ColorPlus® Technology

### Plank, Panel, Shingle and Batten Color Offering



### Trim Color Offering



Colors shown are as accurate as printing methods will permit. Please see actual product sample for true color.

## HardiePlank®



### SELECT CEDARMILL®

Width 5.25 in 6.25 in  
 Exposure 4 in 5 in

## HardiePanel®



### SELECT CEDARMILL®

Size 4 ft x 10 ft

### SMOOTH

Width 5.25 in 6.25 in  
 Exposure 4 in 5 in



### SMOOTH

Size 4 ft x 10 ft

## HardieShingle®



### STRAIGHT EDGE PANEL

Height 14 in 15.25 in  
 Exposure 5 in 7 in

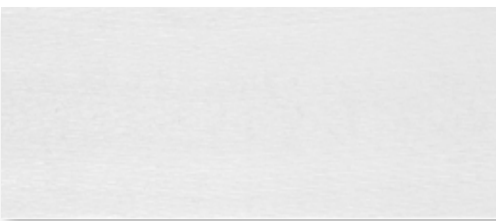
## HardieTrim®

### 4/4 SMOOTH



Thickness .75 in  
 Length 12 ft boards  
 Width 3.5 in 5.5 in 7.25 in 11.25 in

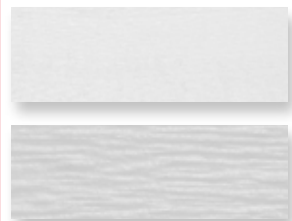
### 5/4 SMOOTH



Thickness 1 in  
 Length 12 ft boards  
 Width 3.5 in 4.5 in 5.5 in 7.25 in 11.25 in

## BATTEN BOARDS

### 4/4 SMOOTH & RUSTIC GRAIN®



.75 in  
 2.5 in



Selecting a color? Request a product sample at [jameshardiepros.com/samples](http://jameshardiepros.com/samples)