



MIXED USE DESIGN
SUBMITTED ON 11/2/2022

RAYNES AVENUE
PORTSMOUTH, NEW HAMPSHIRE



1.0



PRIOR DESIGN FROM 11/2/22

RAYNES AVENUE
PORTSMOUTH, NEW HAMPSHIRE

MAPLEWOOD BRIDGE VIEW

HISTORIC DISTRICT COMMISSION WORK SESSION:
DECEMBER 7, 2022



1.1



RAYNES AVENUE
PORTSMOUTH, NEW HAMPSHIRE

RAYNES AVENUE ENTRY VIEW

HISTORIC DISTRICT COMMISSION WORK SESSION:
DECEMBER 7, 2022



1.2



RAYNES AVENUE
PORTSMOUTH, NEW HAMPSHIRE

VAUGHAN STREET VIEW
HISTORIC DISTRICT COMMISSION WORK SESSION:
DECEMBER 7, 2022



1.3



PRIOR DESIGN FROM 11/2/22

RAYNES AVENUE
PORTSMOUTH, NEW HAMPSHIRE

VIEW ACROSS NORTH MILL POND

HISTORIC DISTRICT COMMISSION WORK SESSION:
DECEMBER 7, 2022



1.4



MIXED USE DESIGN OPTION A

- Included projecting cornice with clean modern lines on Maplewood Ave.
- Introduced modern window patterns and light brick color
- Added new glass canopy design on Maplewood Entry
- Retained large glass canopy and recessed entry at Raynes Ave.
- Raynes Ave balconies are projecting 18" and accented with I-beam forms
- Organized window patterns to be more uniform
- Introduced divided light pattern in double hung windows.
- Brick piers have been added to all elevations facing North Mill Pond
- Upper level siding color is revised to a warm earthtone.

RAYNES AVENUE
PORTSMOUTH, NEW HAMPSHIRE



1.0A



RAYNES AVENUE
PORTSMOUTH, NEW HAMPSHIRE

MAPLEWOOD BRIDGE VIEW

HISTORIC DISTRICT COMMISSION WORK SESSION:
DECEMBER 7, 2022



1.1A



RAYNES AVENUE
PORTSMOUTH, NEW HAMPSHIRE

RAYNES AVENUE ENTRY VIEW
HISTORIC DISTRICT COMMISSION WORK SESSION:
DECEMBER 7, 2022



1.2A



RAYNES AVENUE
PORTSMOUTH, NEW HAMPSHIRE

VAUGHAN STREET VIEW
HISTORIC DISTRICT COMMISSION WORK SESSION:
DECEMBER 7, 2022



1.3A



RAYNES AVENUE
PORTSMOUTH, NEW HAMPSHIRE

VIEW ACROSS NORTH MILL POND

HISTORIC DISTRICT COMMISSION WORK SESSION:
DECEMBER 7, 2022



1.4A



MIXED USE DESIGN OPTION B

- Included projecting cornice with clean modern lines on Maplewood Ave.
- Introduced modern window patterns and light brick color
- Added round balcony and dramatic trellis forms on Maplewood Ave Elevation
- Added new glass canopy design
- Retained large glass canopy and recessed entry at Raynes Ave.
- Raynes Ave balconies are projecting 18" and accented with I-beam forms
- Organized window patterns to be more uniform
- Introduced divided light pattern in double hung windows.
- Brick piers have been added to all elevations facing North Mill Pond
- Upper level siding color is revised to a warm earthtone.

RAYNES AVENUE
PORTSMOUTH, NEW HAMPSHIRE



1.0B



RAYNES AVENUE
PORTSMOUTH, NEW HAMPSHIRE

MAPLEWOOD BRIDGE VIEW

HISTORIC DISTRICT COMMISSION WORK SESSION:
DECEMBER 7, 2022



1.1B



RAYNES AVENUE
PORTSMOUTH, NEW HAMPSHIRE

RAYNES AVENUE ENTRY VIEW

HISTORIC DISTRICT COMMISSION WORK SESSION:
DECEMBER 7, 2022



1.2B



RAYNES AVENUE
PORTSMOUTH, NEW HAMPSHIRE

VAUGHAN STREET VIEW
HISTORIC DISTRICT COMMISSION WORK SESSION:
DECEMBER 7, 2022



1.3B



RAYNES AVENUE
PORTSMOUTH, NEW HAMPSHIRE

VIEW ACROSS NORTH MILL POND

HISTORIC DISTRICT COMMISSION WORK SESSION:
DECEMBER 7, 2022



1.4B



MIXED USE DESIGN OPTION C

- Introduced a round tower transition element between three and four story buildings
- Included projecting cornice with corbels on three story building forms
- Added strong metal entrance composition with glass canopy
- Simplified Storefront glazing
- Raynes Ave balconies are projecting 18" and accented with I-beam forms
- Organized window patterns to be more uniform
- Introduced divided light pattern in double hung windows.
- Brick piers have been added to all elevations facing North Mill Pond
- Upper level siding color is revised to a warm earthtone.

RAYNES AVENUE
PORTSMOUTH, NEW HAMPSHIRE



1.0C



RAYNES AVENUE
PORTSMOUTH, NEW HAMPSHIRE

MAPLEWOOD BRIDGE VIEW

HISTORIC DISTRICT COMMISSION WORK SESSION:
DECEMBER 7, 2022



1.1C



RAYNES AVENUE
PORTSMOUTH, NEW HAMPSHIRE

RAYNES AVENUE ENTRY VIEW

HISTORIC DISTRICT COMMISSION WORK SESSION:
DECEMBER 7, 2022



1.2C



RAYNES AVENUE
PORTSMOUTH, NEW HAMPSHIRE

VAUGHAN STREET VIEW
HISTORIC DISTRICT COMMISSION WORK SESSION:
DECEMBER 7, 2022



1.3C



RAYNES AVENUE
PORTSMOUTH, NEW HAMPSHIRE

VIEW ACROSS NORTH MILL POND

HISTORIC DISTRICT COMMISSION WORK SESSION:
DECEMBER 7, 2022



1.4C



MIXED USE DESIGN OPTION D

- Introduced a round tower transition element between three and four story buildings
- Introduced a second round tower on the Maplewood Ave Elevation.
- Included projecting cornice with corbels on three story building forms
- Added strong metal entrance composition with glass canopy
- Simplified Storefront glazing
- Raynes Ave balconies are projecting 18" and accented with I-beam forms
- Organized window patterns to be more uniform
- Introduced divided light pattern in double hung windows.
- Brick piers have been added to all elevations facing North Mill Pond
- Upper level siding color is revised to a warm earthtone.

RAYNES AVENUE
PORTSMOUTH, NEW HAMPSHIRE



1.0D



RAYNES AVENUE
PORTSMOUTH, NEW HAMPSHIRE

MAPLEWOOD BRIDGE VIEW

HISTORIC DISTRICT COMMISSION WORK SESSION:
DECEMBER 7, 2022



1.1D



RAYNES AVENUE
PORTSMOUTH, NEW HAMPSHIRE

RAYNES AVENUE ENTRY VIEW

HISTORIC DISTRICT COMMISSION WORK SESSION:
DECEMBER 7, 2022



1.2D



RAYNES AVENUE
PORTSMOUTH, NEW HAMPSHIRE

VAUGHAN STREET VIEW
HISTORIC DISTRICT COMMISSION WORK SESSION:
DECEMBER 7, 2022



1.3D



RAYNES AVENUE
PORTSMOUTH, NEW HAMPSHIRE

VIEW ACROSS NORTH MILL POND

HISTORIC DISTRICT COMMISSION WORK SESSION:
DECEMBER 7, 2022



1.4D



RAYNES AVENUE
PORTSMOUTH, NEW HAMPSHIRE

NIGHT RENDERING

HISTORIC DISTRICT COMMISSION WORK SESSION:
DECEMBER 7, 2022



2.0



RAYNES AVENUE
PORTSMOUTH, NEW HAMPSHIRE

RAYNES AVE VIEW
HISTORIC DISTRICT COMMISSION WORK SESSION:
DECEMBER 7, 2022



2.1



RAYNES AVENUE
PORTSMOUTH, NEW HAMPSHIRE

VIEW AT 3S ARTSPACE
HISTORIC DISTRICT COMMISSION WORK SESSION:
DECEMBER 7, 2022



2.2



RAYNES AVENUE
PORTSMOUTH, NEW HAMPSHIRE

VIEW ACROSS NORTH MILL POND
FROM MARKET STREET

HISTORIC DISTRICT COMMISSION WORK SESSION:
DECEMBER 7, 2022



2.3



RAYNES AVENUE
PORTSMOUTH, NEW HAMPSHIRE

VIEW ACROSS NORTH MILL POND

HISTORIC DISTRICT COMMISSION WORK SESSION:
DECEMBER 7, 2022



2.4



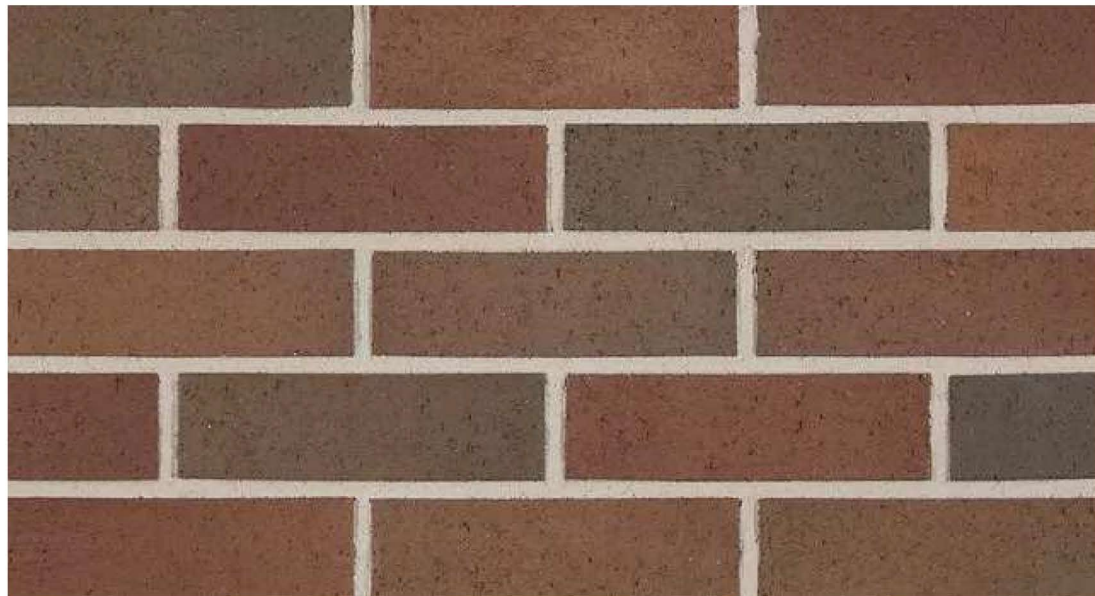
RAYNES AVENUE
PORTSMOUTH, NEW HAMPSHIRE

VIEW ACROSS NORTH MILL POND

HISTORIC DISTRICT COMMISSION WORK SESSION:
DECEMBER 7, 2022



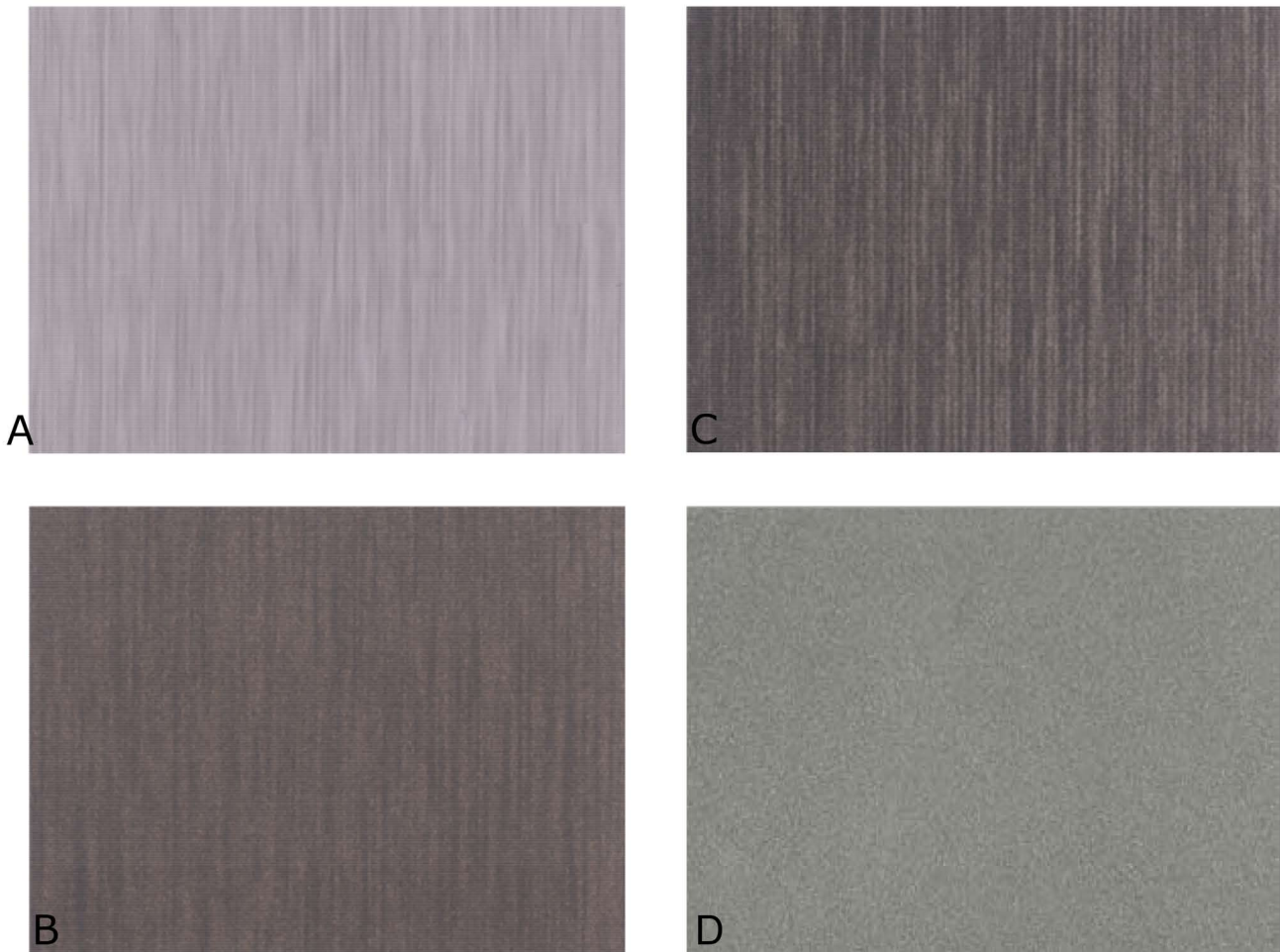
2.5



MAIN BRICK
MANUFACTURER: BELDEN
COLOR: CLARET FULL RANGE VELOUR
MORTAR: SGS 85X DARK CHOCOLATE
SPECIAL INSTRUCTIONS: RUNNING BOND



ACCENT BRICK
MANUFACTURER: ENDICOTT
COLOR: MANGANESE IRONSPOT - SMOOTH
MORTAR: SGS 94X IRON BLACK
SPECIAL INSTRUCTIONS: RUNNING BOND

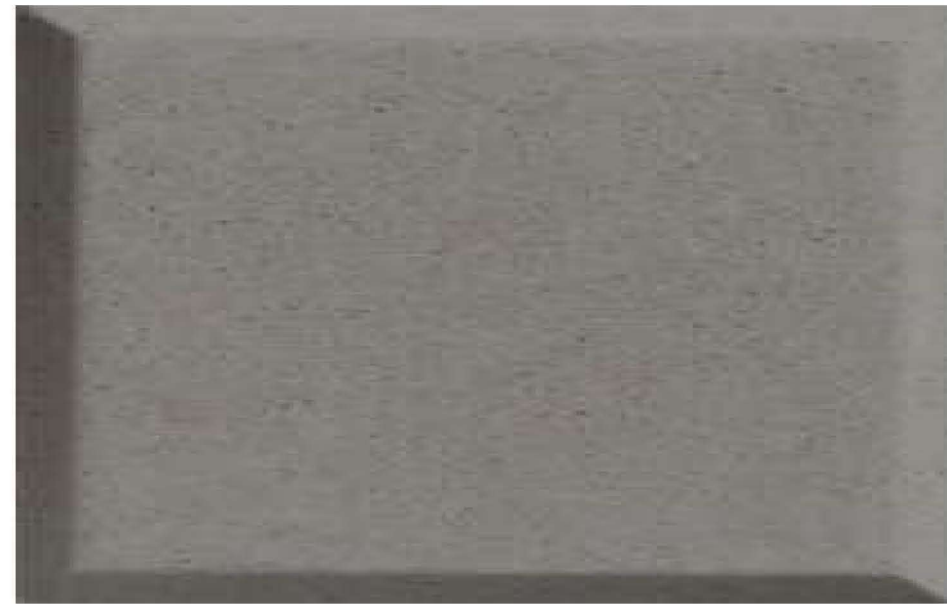


PREFORMED ALUMINUM PANEL
MANUFACTURER: VITRABOND
COLOR: A = FAUX ZINC LIGHT
B = FAUX ZINC DARK
C = FAUX ZINC CHARCOAL
D = DARK GREY METALLIC

HOTEL



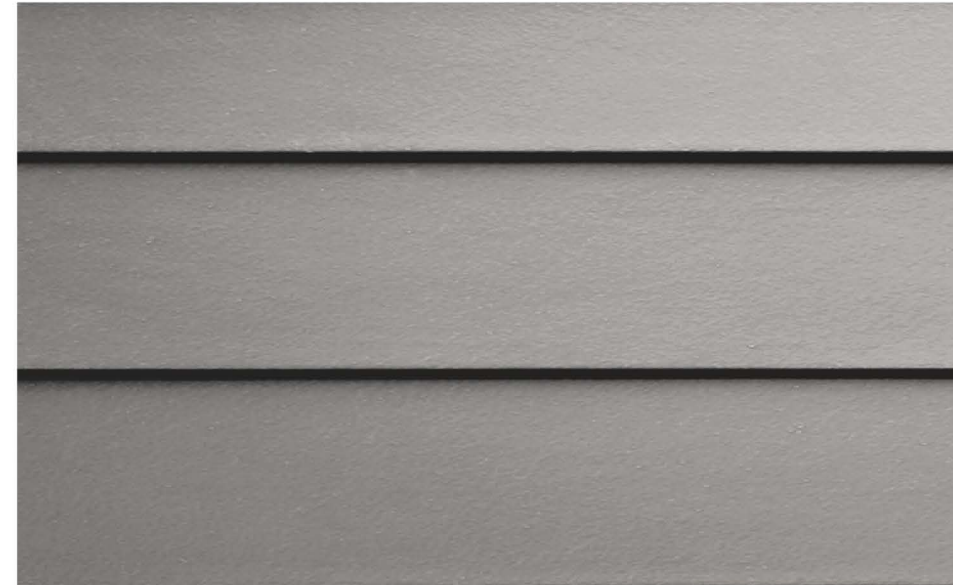
MAIN BRICK
 MANUFACTURER: BELDEN
 COLOR: ADMIRAL FULL RANGE VELOUR
 MORTAR: NATURAL PORTLAND CEMENT
 SPECIAL INSTRUCTIONS: RUNNING BOND



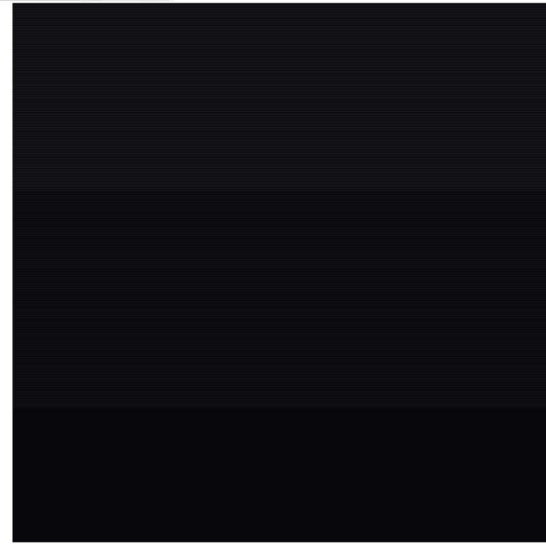
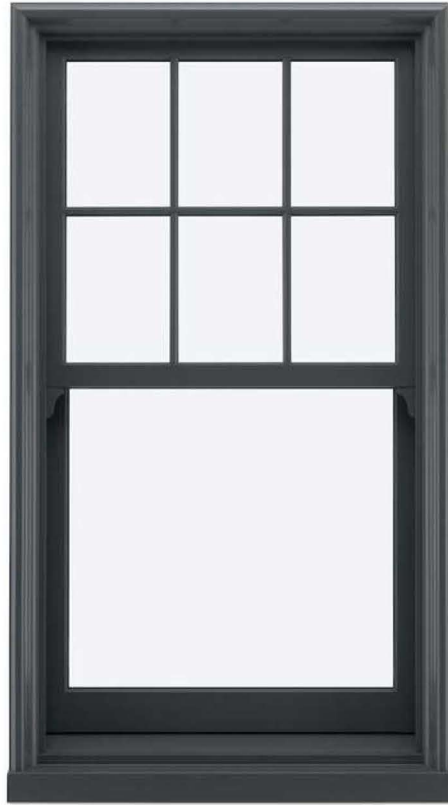
CAST STONE
 MANUFACTURER: NORTHERN DESIGN ARCHITECTURAL
 FINISH: LIGHT ETCH
 COLOR: SLATE



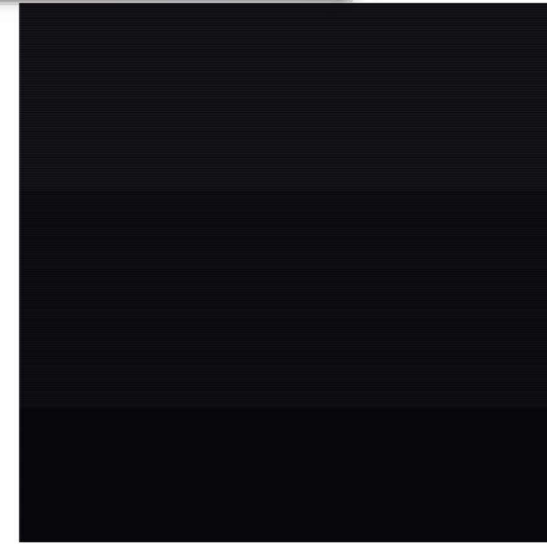
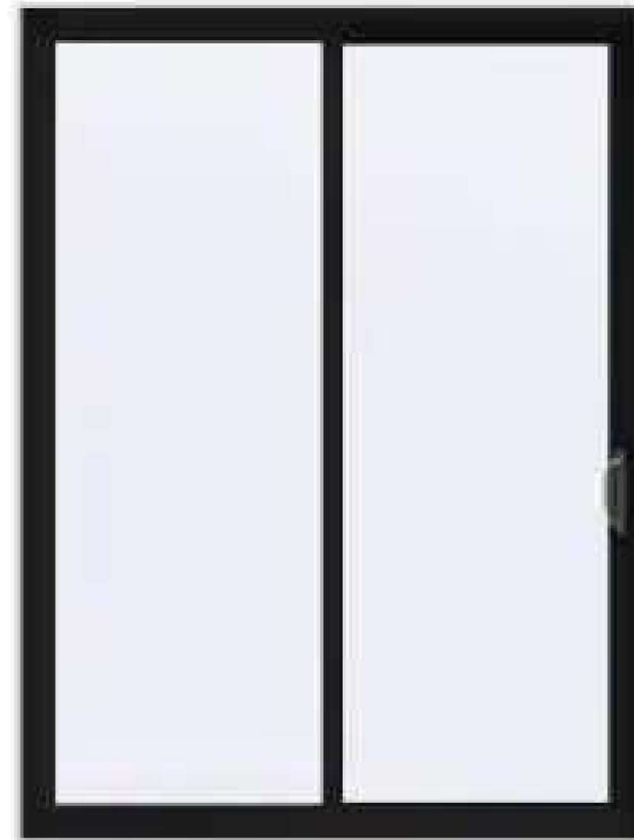
ACCENT BRICK
 MANUFACTURER: ENDICOTT
 COLOR: MANGANESE IRONSPOT - SMOOTH
 MORTAR: SGS 94X IRON BLACK
 SPECIAL INSTRUCTIONS: RUNNING BOND



LAP SIDING
 MANUFACTURER: JAMES HARDIE
 STYLE: PLANK SIDING - LAP
 FINISH: SMOOTH
 COLOR: PEARL GREY
 MIXED USE

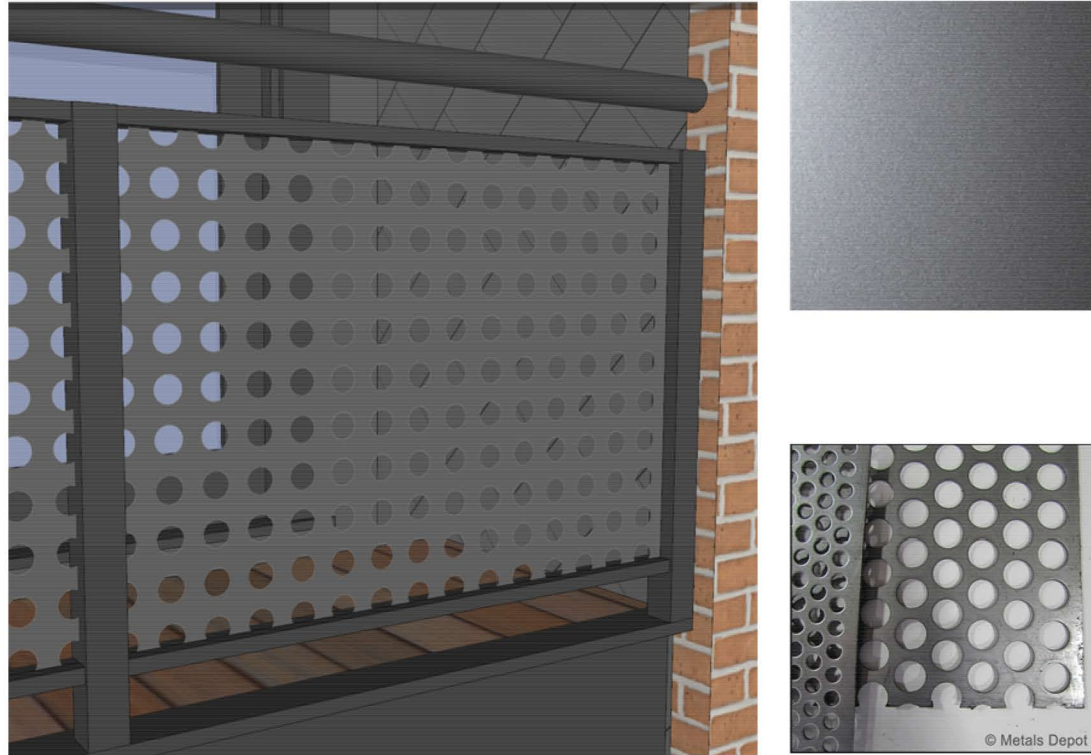


DOUBLE-HUNG WINDOWS
 MANUFACTURER: MARVIN
 SERIES: ESSENTIAL
 COLOR: EBONY

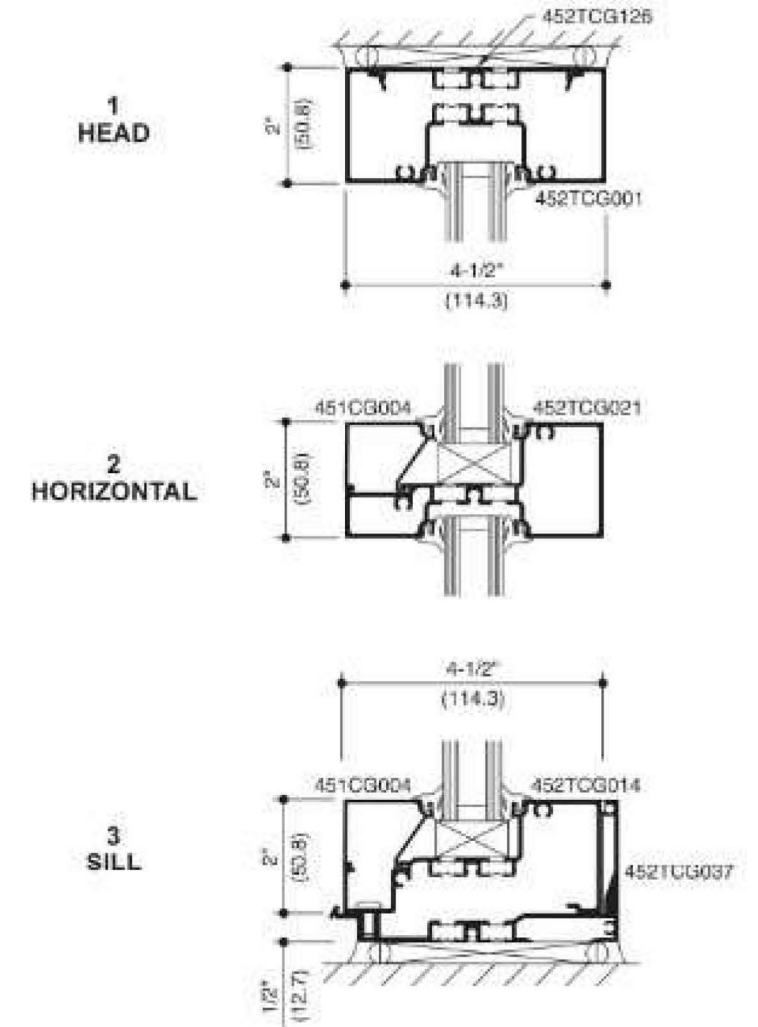
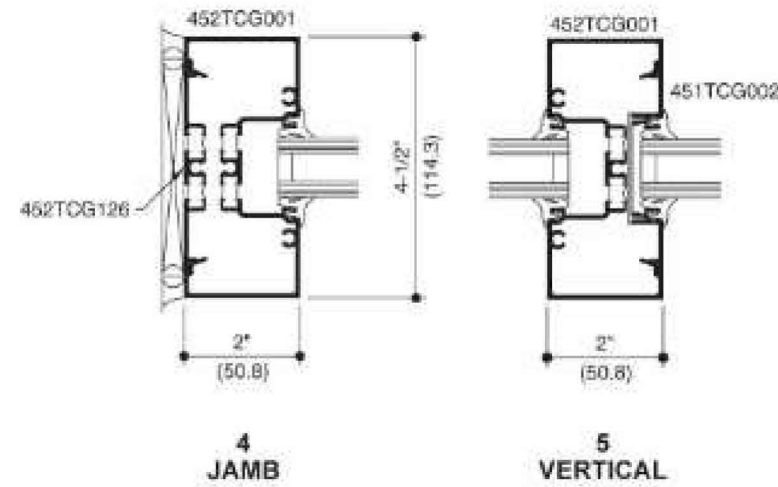


PATIO DOORS
 MANUFACTURER: MARVIN
 SERIES: ESSENTIAL
 COLOR: EBONY

MIXED USE



BALCONY RAILING
MANUFACTURER: METALS DEPOT
STYLE: 1" HOLE - PS111
COLOR: KYNAR - PEWTER SILVER



STOREFRONT
MANUFACTURER: KAWNEER
SERIES: TRIFAB 451 UT
COLOR: BLACK

MIXED USE

RAYNES AVENUE
 PORTSMOUTH, NEW HAMPSHIRE

PROPOSED MATERIALS
 HISTORIC DISTRICT COMMISSION WORK SESSION:
 DECEMBER 7, 2022





MANUFACTURER: MODERN FORMS
 MODEL: SUSPENSE
 COLOR: BLACK



MANUFACTURER: MODERN FORMS
 MODEL: MIDNIGHT
 COLOR: BLACK

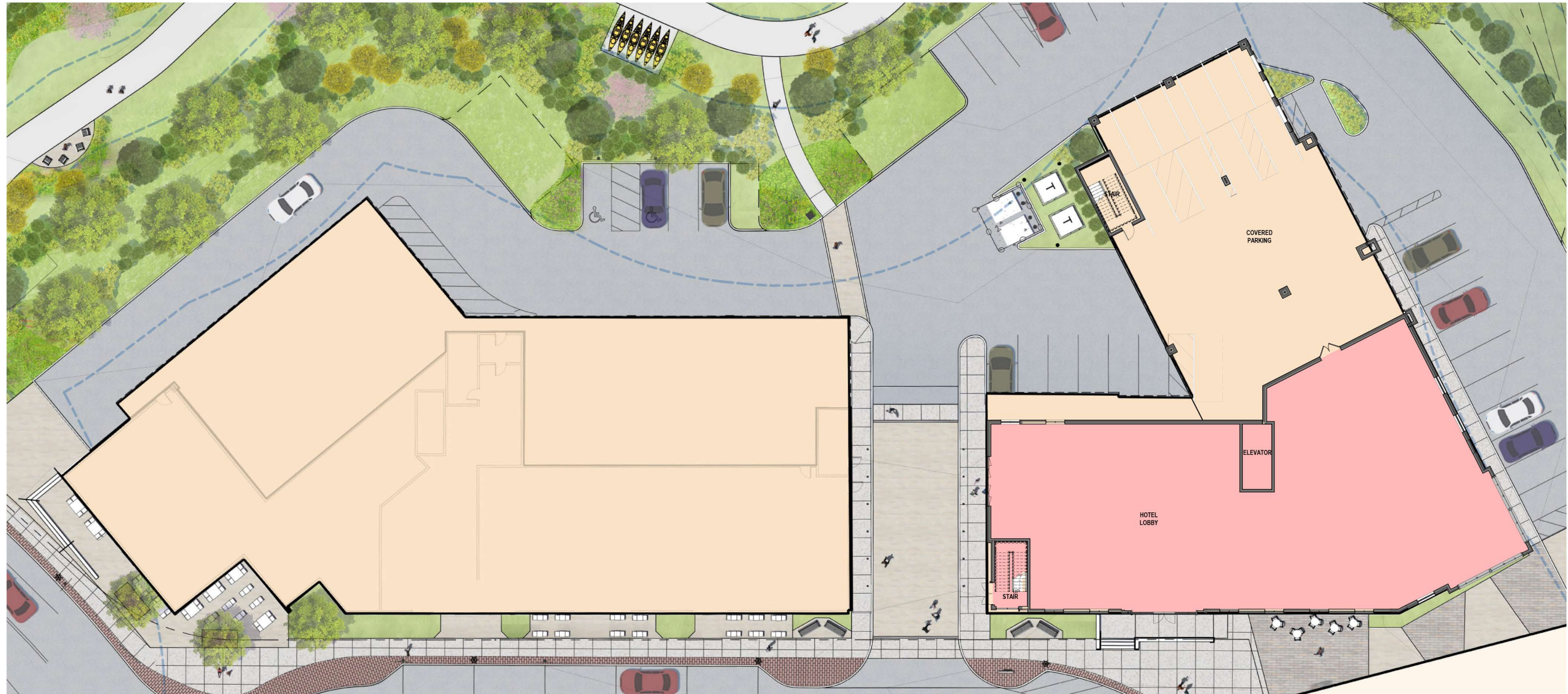


MANUFACTURER: MODERN FORMS
 MODEL: BLADE
 COLOR: BLACK

MIXED USE

LEGEND

HOTEL



1 LEVEL 1 - OVERALL W/ SITE
SCALE: 3/32" = 1'-0" REF SHEET: 1 / A3.01



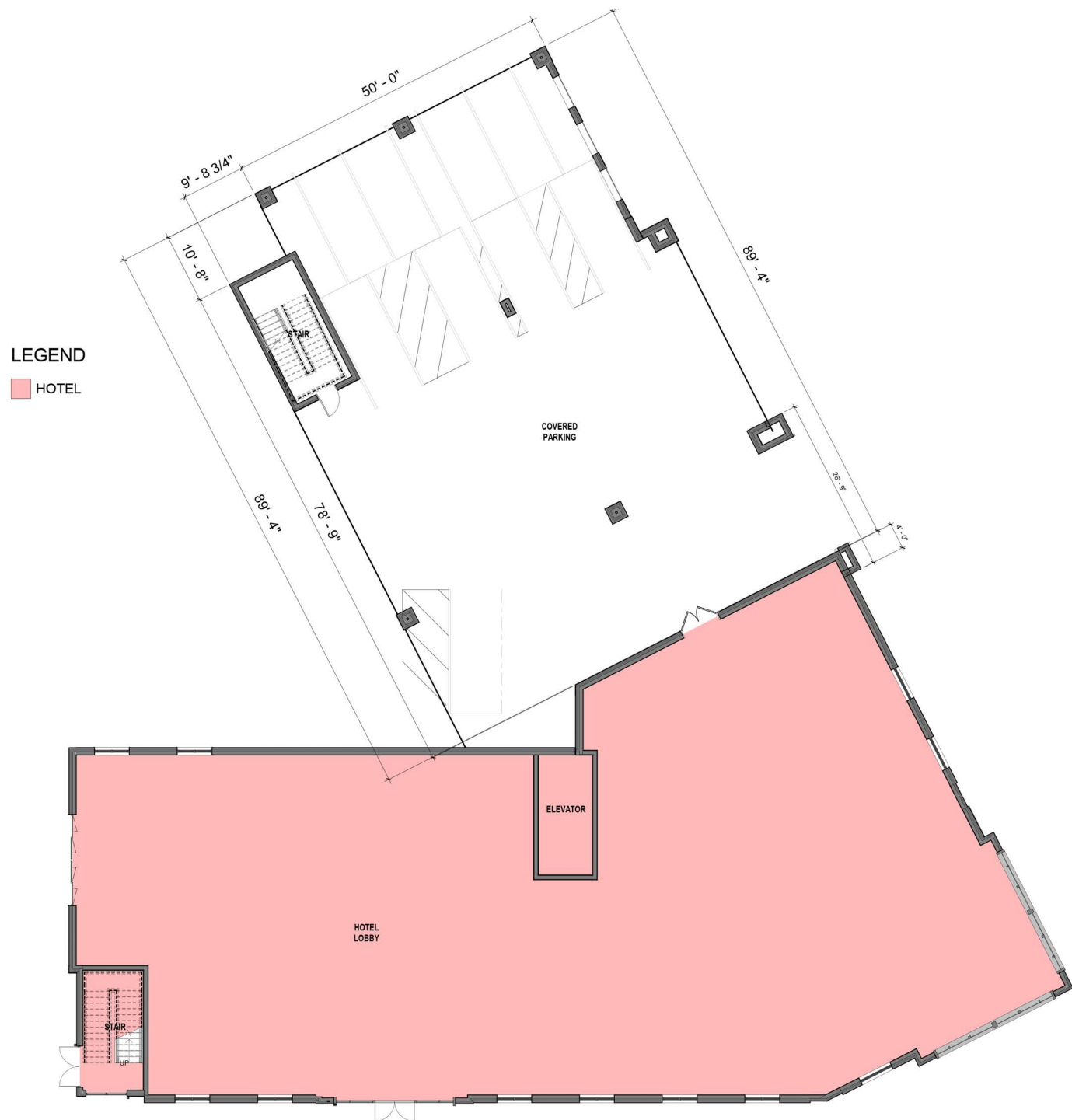
OVERALL SITE PLAN

RAYNES AVE. Project
HOTEL

Dwg. No.
A1.00

HISTORIC DISTRICT COMMISSION APPLICATION FOR APPROVAL:
DECEMBER 7, 2022

4.0
NOT TO SCALE



LEGEND
■ HOTEL

1 OVERALL FIRST FLOOR PLAN
 SCALE: 1/8" = 1'-0"



FIRST FLOOR PLAN

RAYNES AVE.
HOTEL

Dwg. No.
A1.01

HISTORIC DISTRICT COMMISSION APPLICATION FOR APPROVAL:
 DECEMBER 7, 2022

4.1
 NOT TO SCALE



1 OVERALL SECOND FLOOR PLAN
SCALE: 1/8" = 1'-0"



1 OVERALL THIRD FLOOR PLAN
SCALE: 1/8" = 1'-0"



1 OVERALL FOURTH FLOOR PLAN
SCALE: 1/8" = 1'-0"



1 OVERALL FIFTH FLOOR PLAN
SCALE: 1/8" = 1'-0"



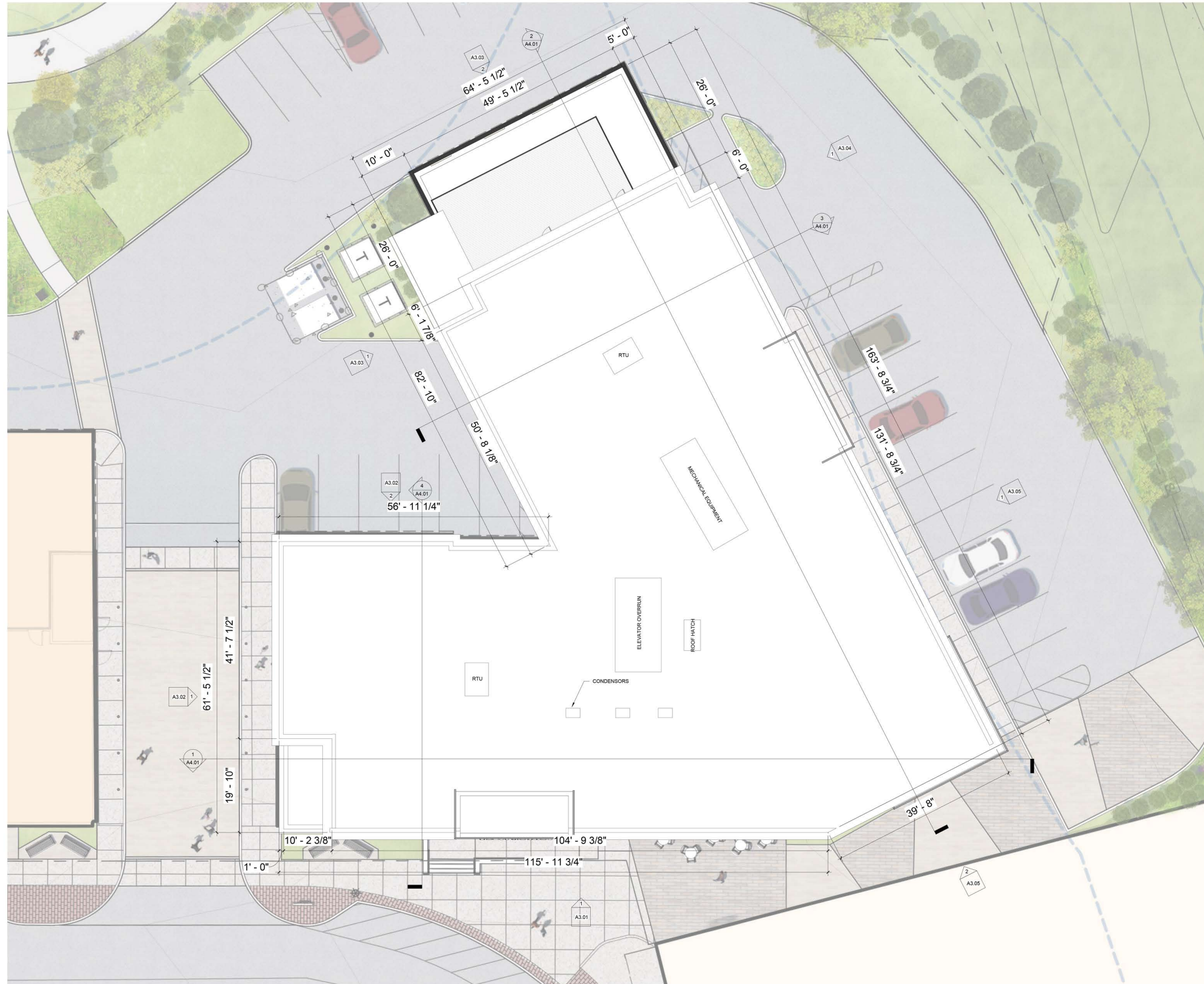
FIFTH FLOOR PLAN

RAYNES AVE.
HOTEL

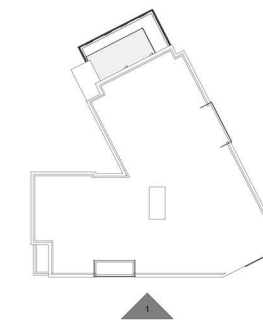
Dwg. No.
A1.05

HISTORIC DISTRICT COMMISSION APPLICATION FOR APPROVAL:
DECEMBER 7, 2022

4.5
NOT TO SCALE



1 OVERALL ROOF PLAN
SCALE: 1/8" = 1'-0"



KEYPLAN
1" = 40'-0"



1 SOUTH EAST ELEVATION
SCALE: 1/4" = 1'-0" REF SHEET: 1 / A1.02



North	Scale

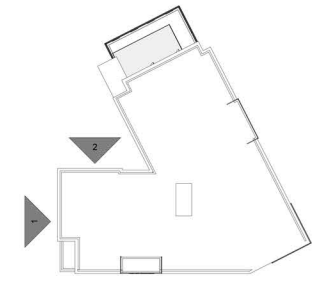
ELEVATIONS

RAYNES AVE. Project
HOTEL

Dwg. No.
A3.01

HISTORIC DISTRICT COMMISSION APPLICATION FOR APPROVAL:
DECEMBER 7, 2022

4.7
NOT TO SCALE



KEYPLAN
1" = 40'-0"



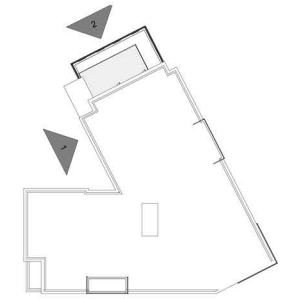
North Scale

ELEVATIONS

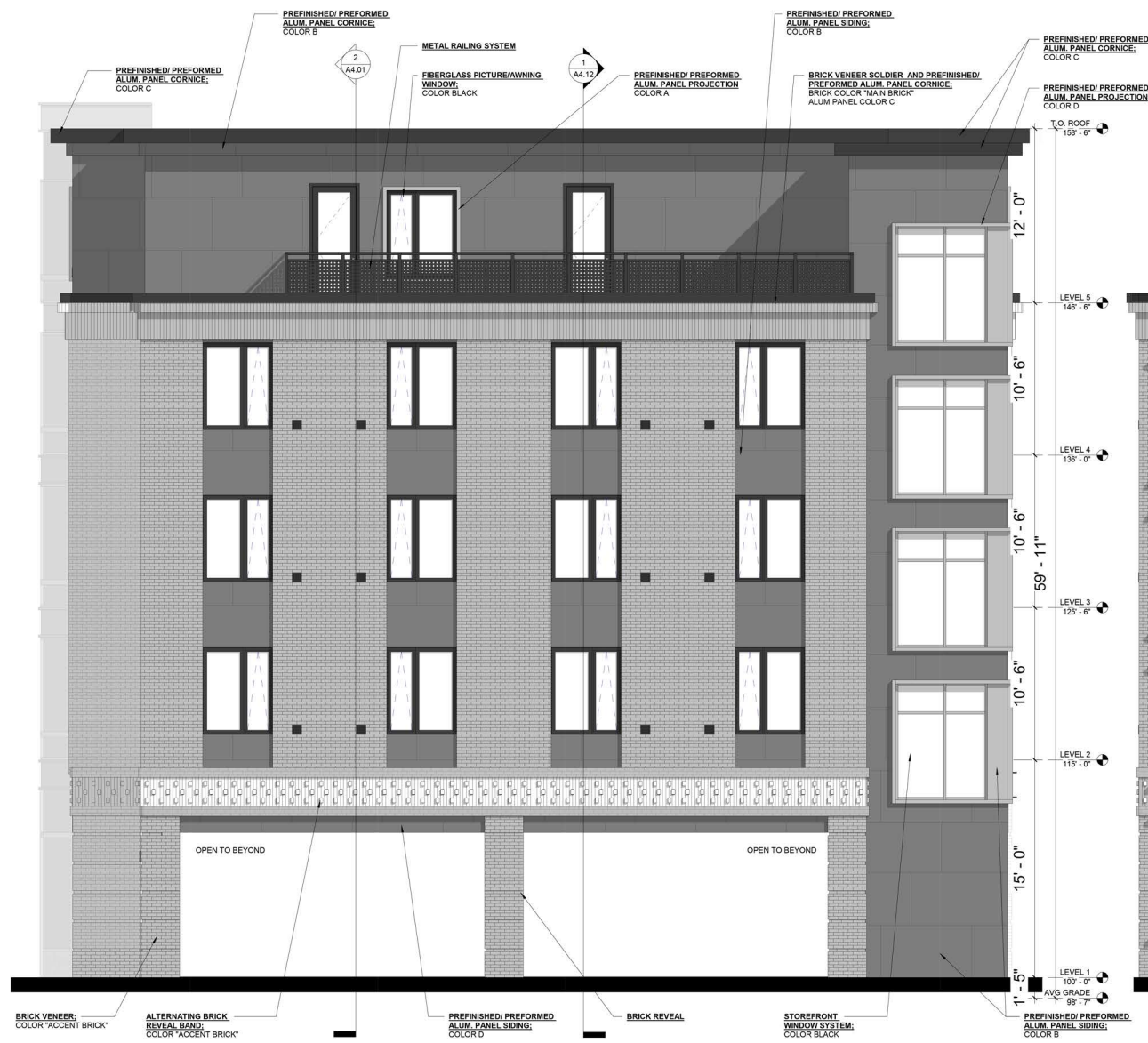
RAYNES AVE.
HOTEL

Project

Dwg. No.
A3.02



KEYPLAN
1" = 40'-0"



2 NORTH WEST ELEVATION B
SCALE: 1/4" = 1'-0" REF SHEET: 1 / A1.02



1 SOUTH WEST ELEVATION B
SCALE: 1/4" = 1'-0" REF SHEET: 1 / A1.02



North Scale

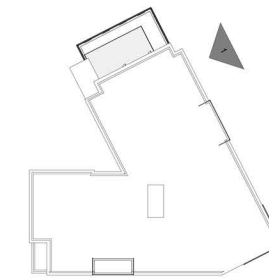
ELEVATIONS

RAYNES AVE. HOTEL Project

Dwg. No. A3.03

HISTORIC DISTRICT COMMISSION APPLICATION FOR APPROVAL:
DECEMBER 7, 2022

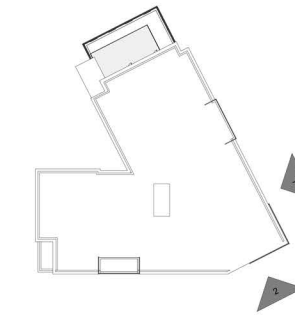
4.9
NOT TO SCALE



KEYPLAN
1" = 40'-0"



1 NORTH EAST ELEVATION A
SCALE: 1/4" = 1'-0" REF SHEET: 1 / A1.02



KEYPLAN
1" = 40'-0"



2 EAST ELEVATION
SCALE: 1/4" = 1'-0"

REF SHEET: 1 / A1.02

1 NORTH EAST ELEVATION B
SCALE: 1/4" = 1'-0"

REF SHEET: 1 / A1.02



North	Scale

ELEVATIONS

RAYNES AVE.
HOTEL

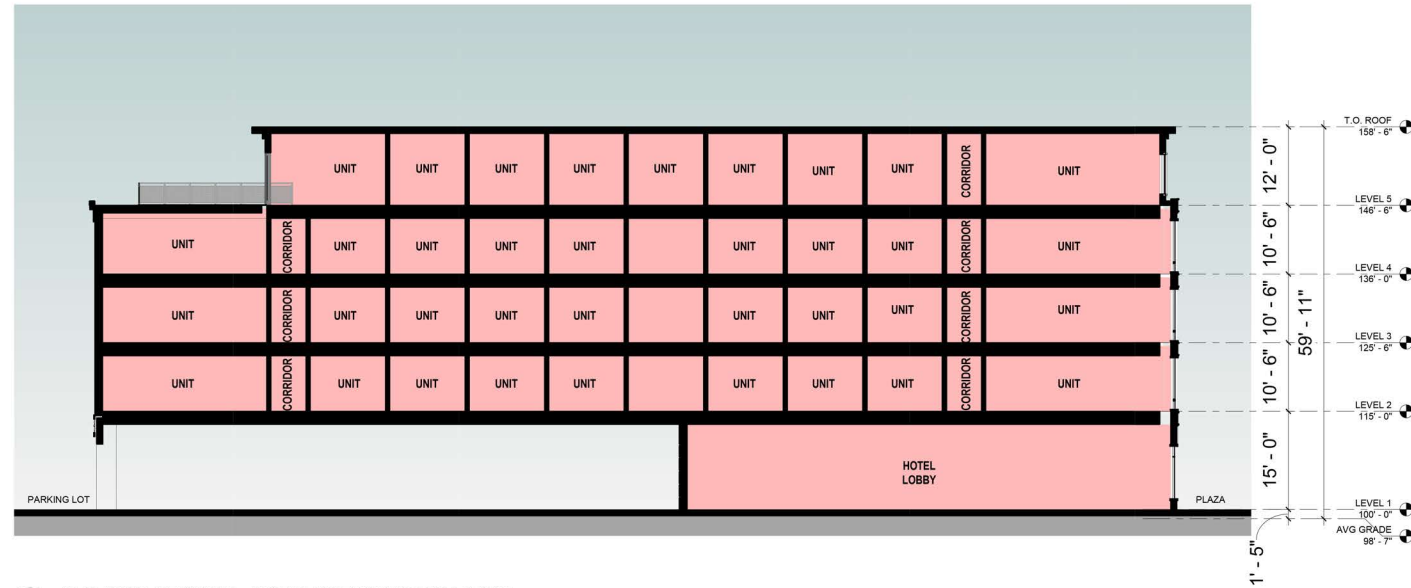
Dwg. No.
A3.05

HISTORIC DISTRICT COMMISSION APPLICATION FOR APPROVAL:
DECEMBER 7, 2022

4.11
NOT TO SCALE

LEGEND

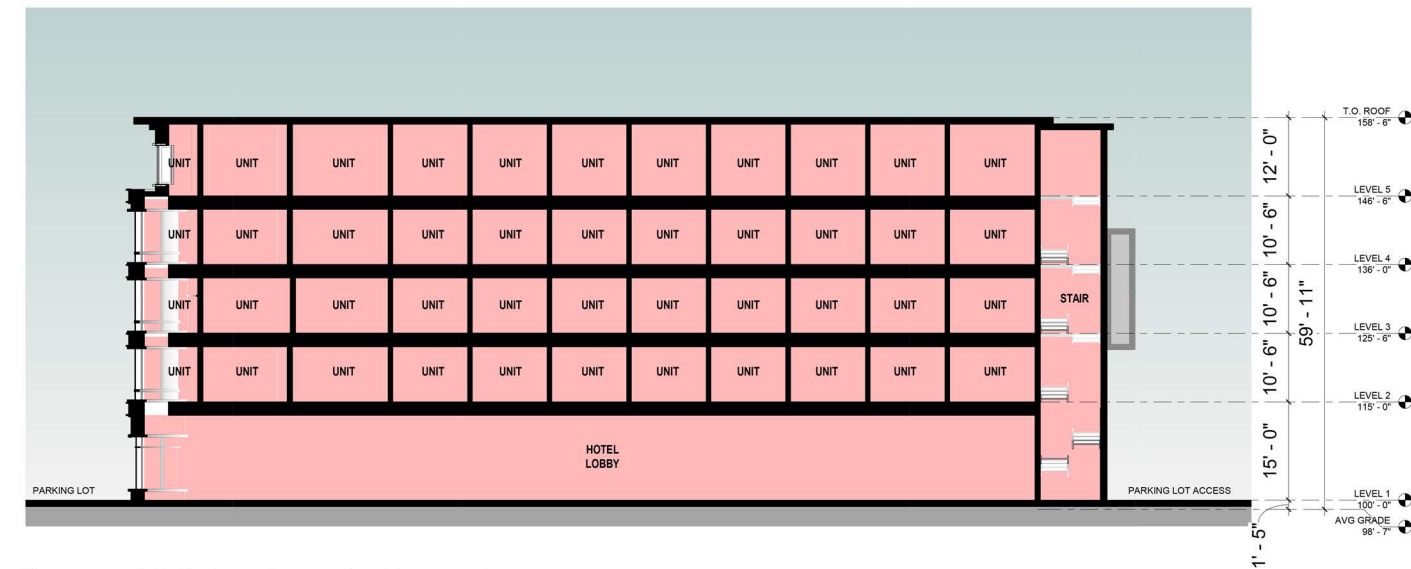
HOTEL



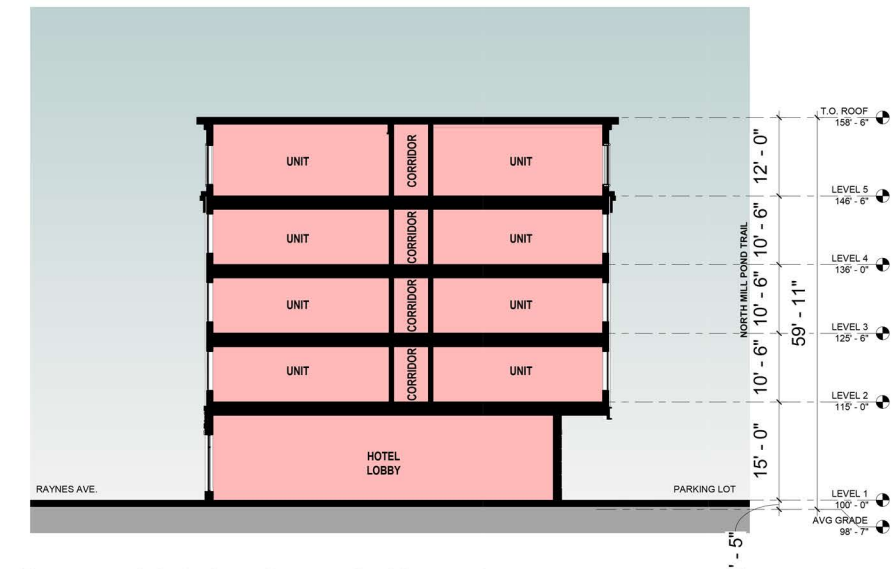
2 BUILDING SECTION - NORTH WEST / SOUTH EAST
SCALE: 3/32" = 1'-0" REF SHEET: 1 / A1.02



3 BUILDING SECTION - NORTH EAST / SOUTH WEST
SCALE: 3/32" = 1'-0" REF SHEET: 1 / A1.02



1 BUILDING SECTION - NORTH EAST / SOUTH WEST
SCALE: 3/32" = 1'-0" REF SHEET: 1 / A1.02



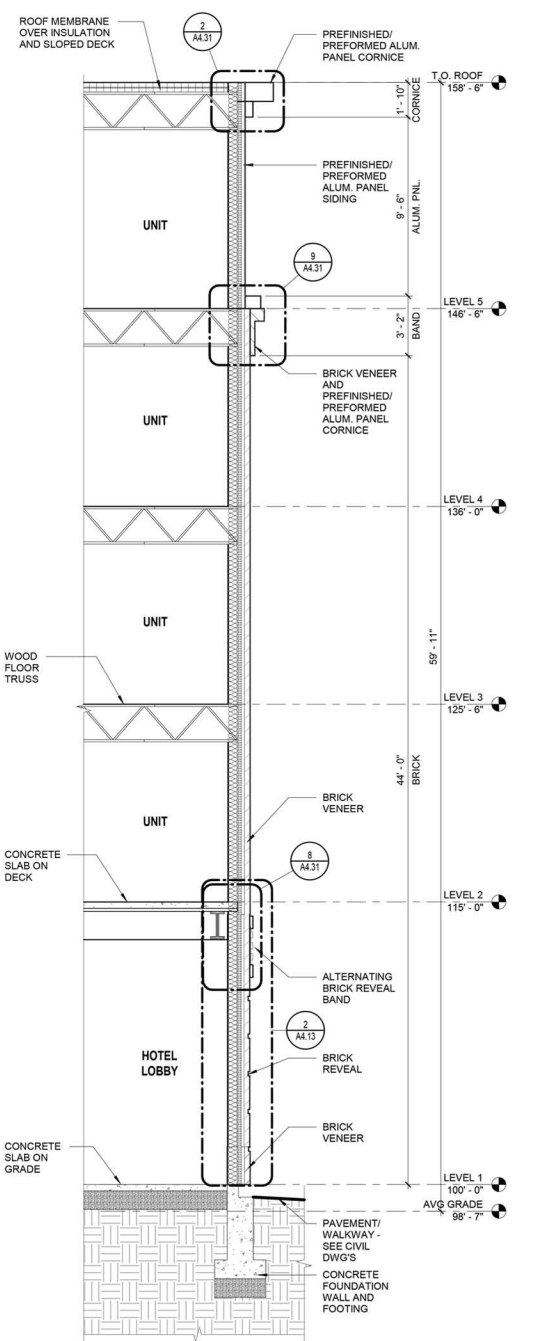
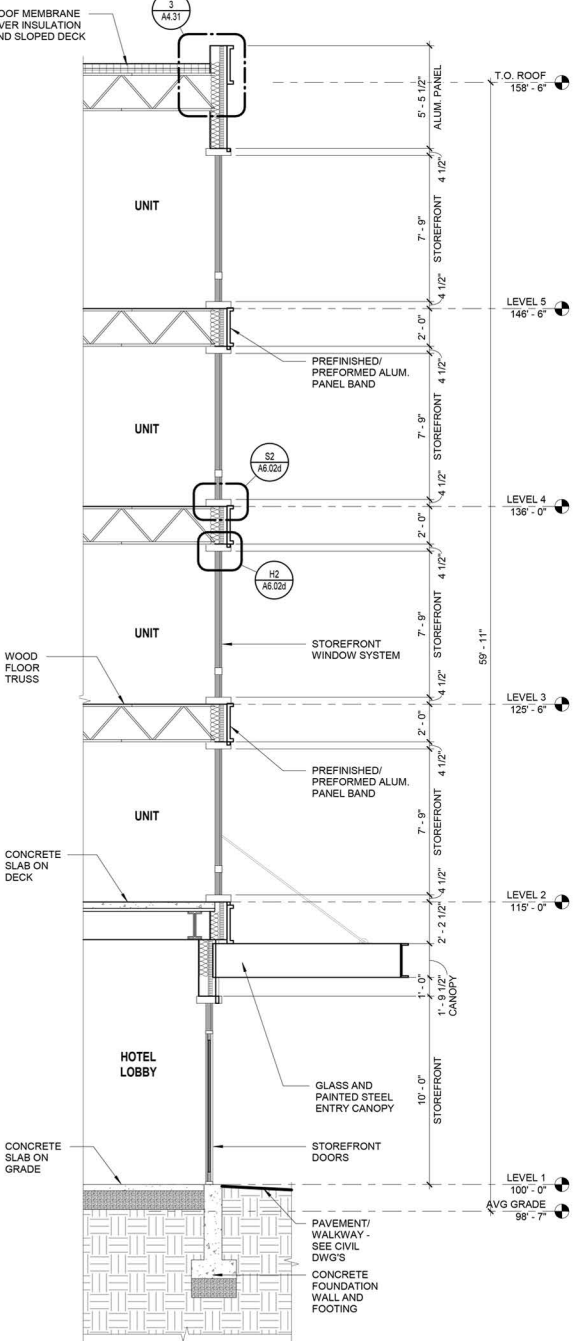
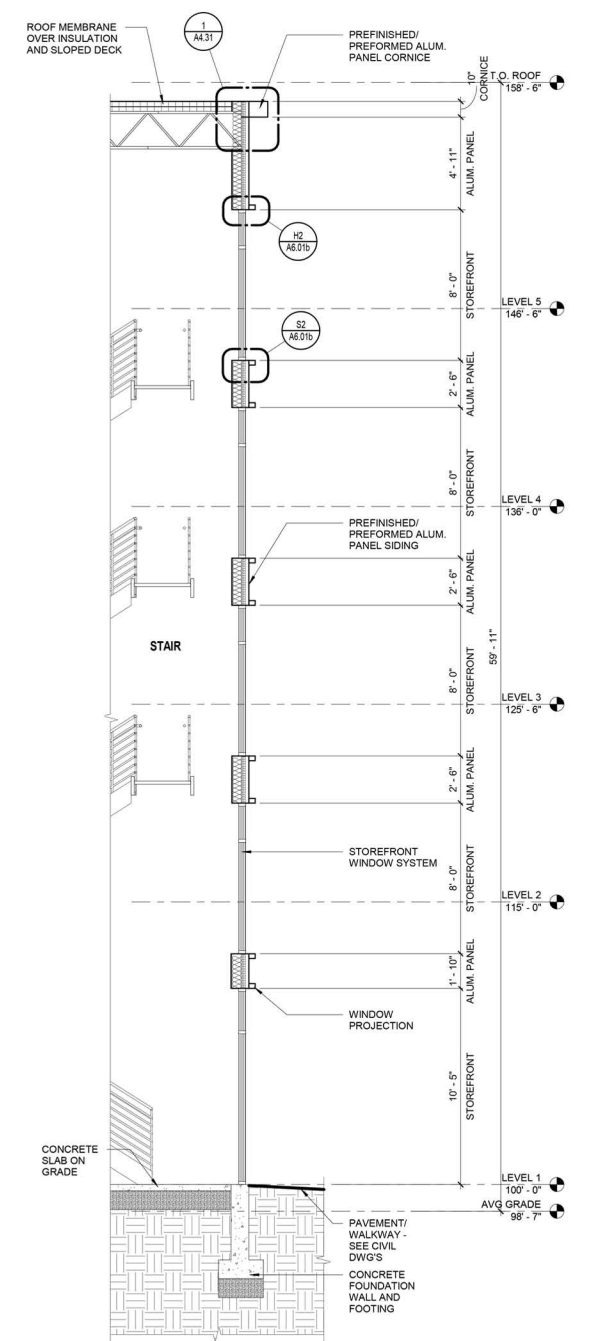
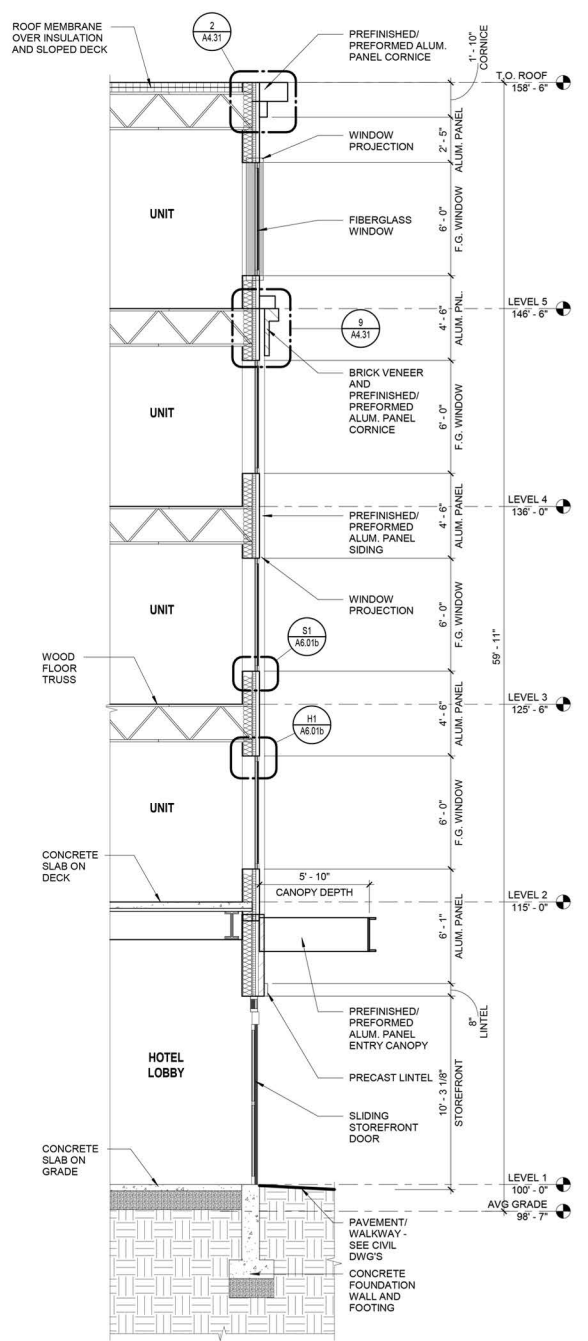
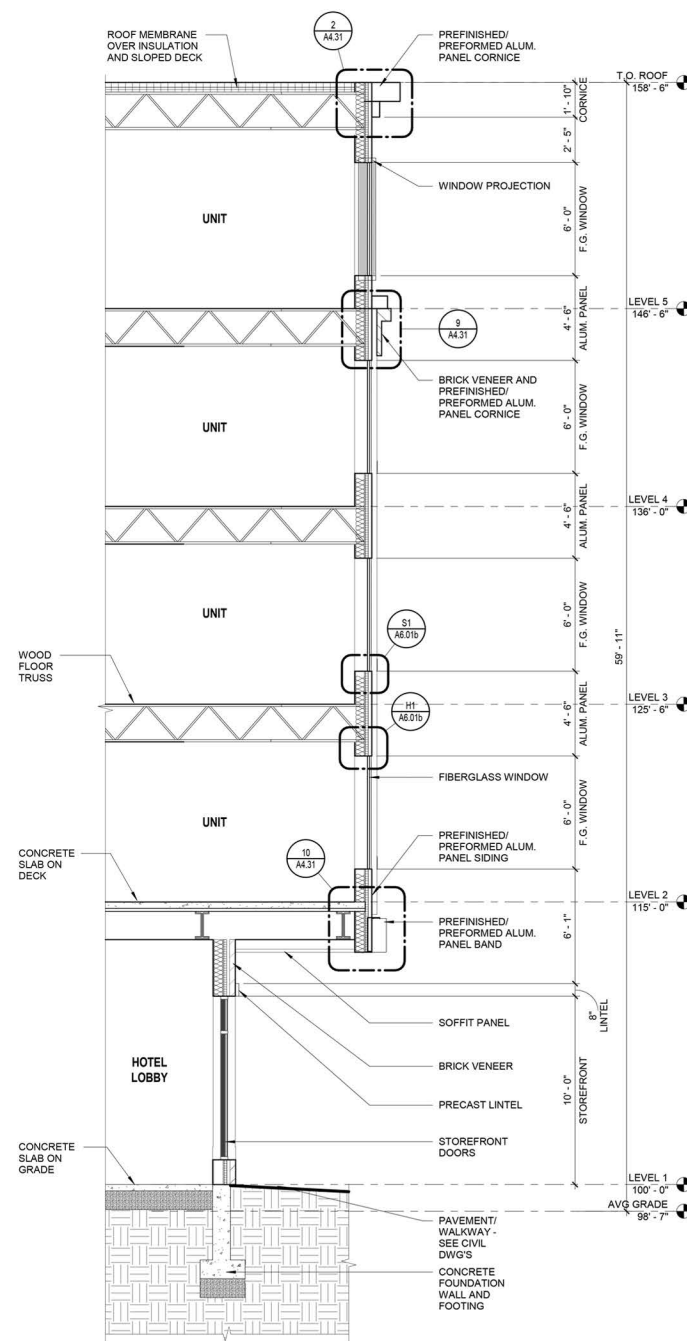
4 BUILDING SECTION - NORTH WEST / SOUTH EAST
SCALE: 3/32" = 1'-0" REF SHEET: 1 / A1.02



BUILDING SECTIONS

RAYNES AVE. HOTEL

Dwg. No. A4.01



5 WALL SECTION - OVERHANG
SCALE: 1/4" = 1'-0" REF SHEET: 2 / A3.02

4 WALL SECTION - SOUTH WEST ENTRY
SCALE: 1/4" = 1'-0" REF SHEET: 1 / A3.02

3 WALL SECTION - STAIR
SCALE: 1/4" = 1'-0" REF SHEET: 1 / A3.01

2 WALL SECTION - RAYNES AVE ENTRY CANOPY
SCALE: 1/4" = 1'-0" REF SHEET: 1 / A3.01

1 WALL SECTION - TYPICAL
SCALE: 1/4" = 1'-0" REF SHEET: 1 / A3.01

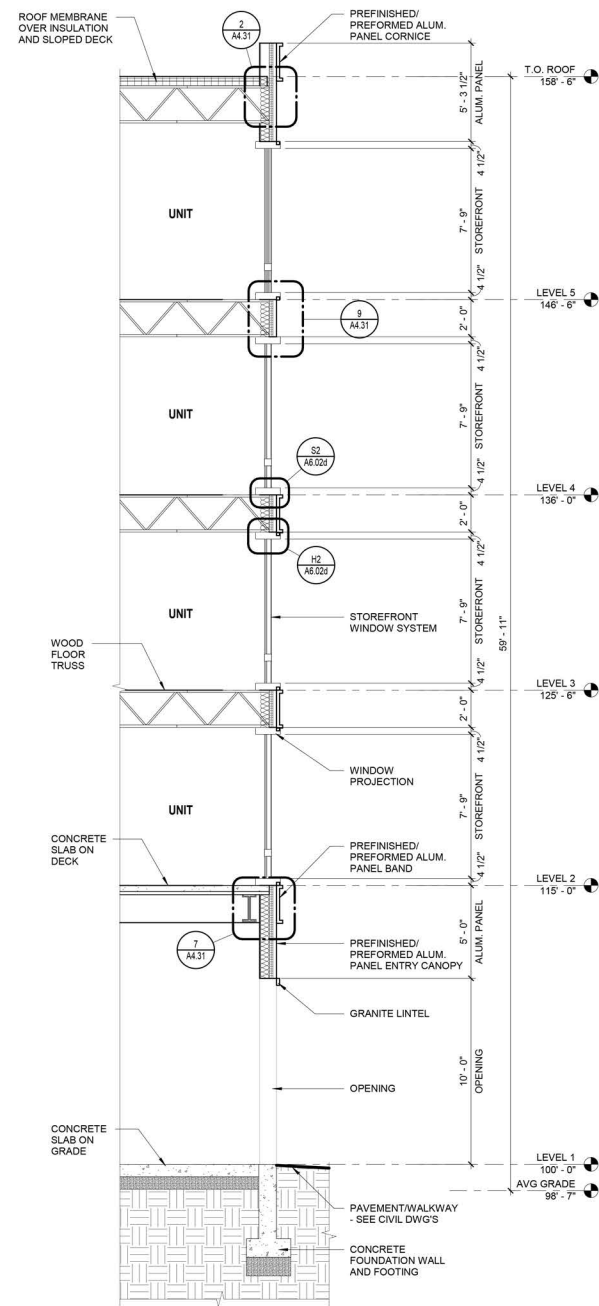


North Scale

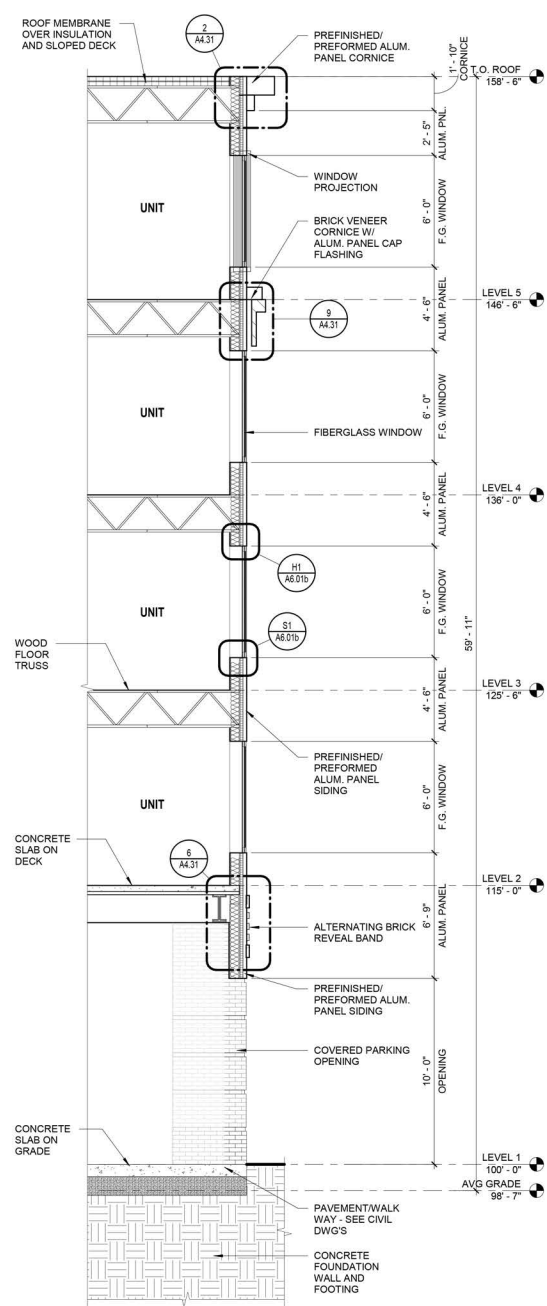
WALL SECTIONS

RAYNES AVE.
HOTEL

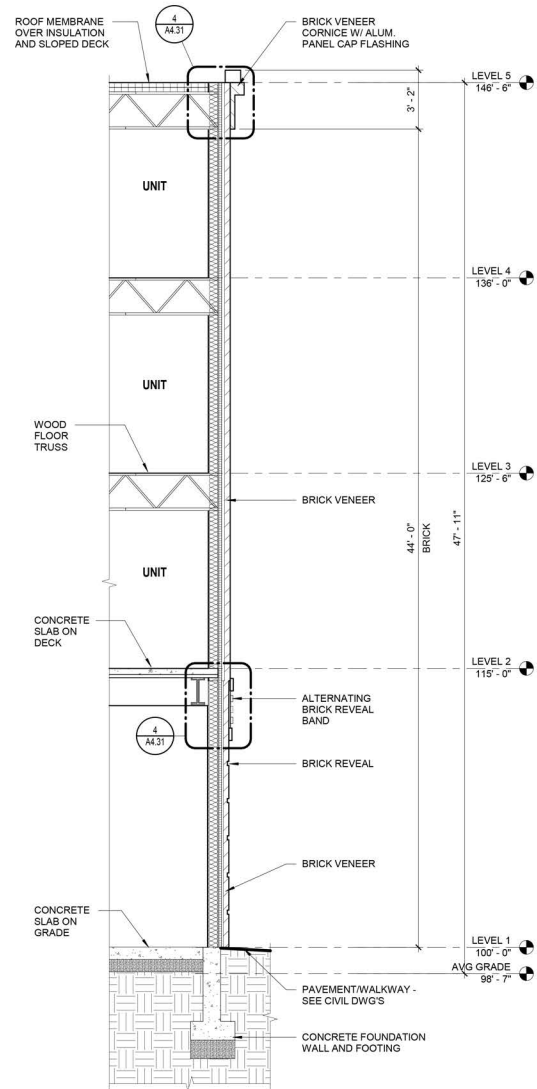
Dwg. No.
A4.11



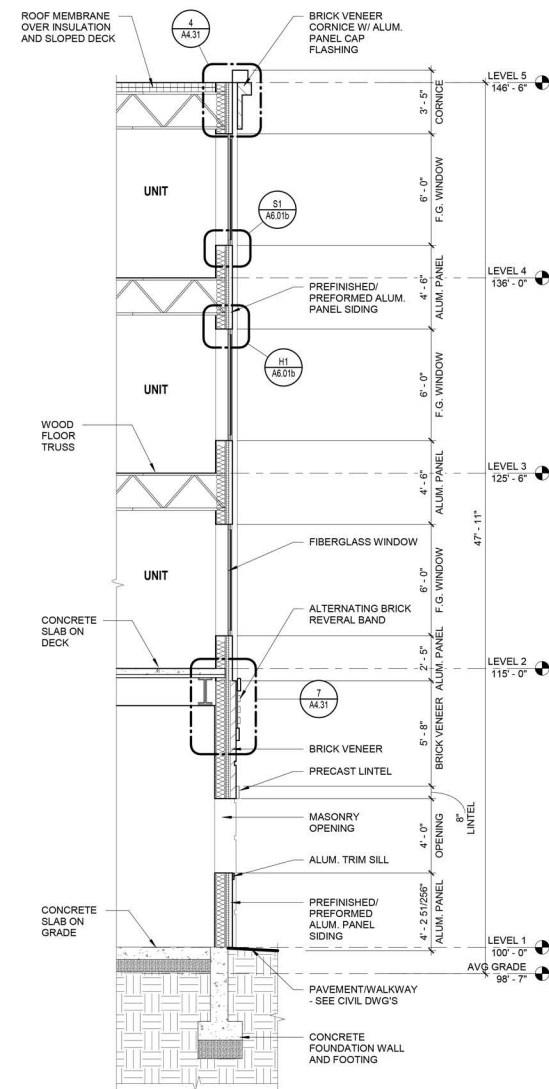
5 WALL SECTION - PARKING OPENING B
SCALE: 1/4" = 1'-0" REF SHEET: 1 / A3.05



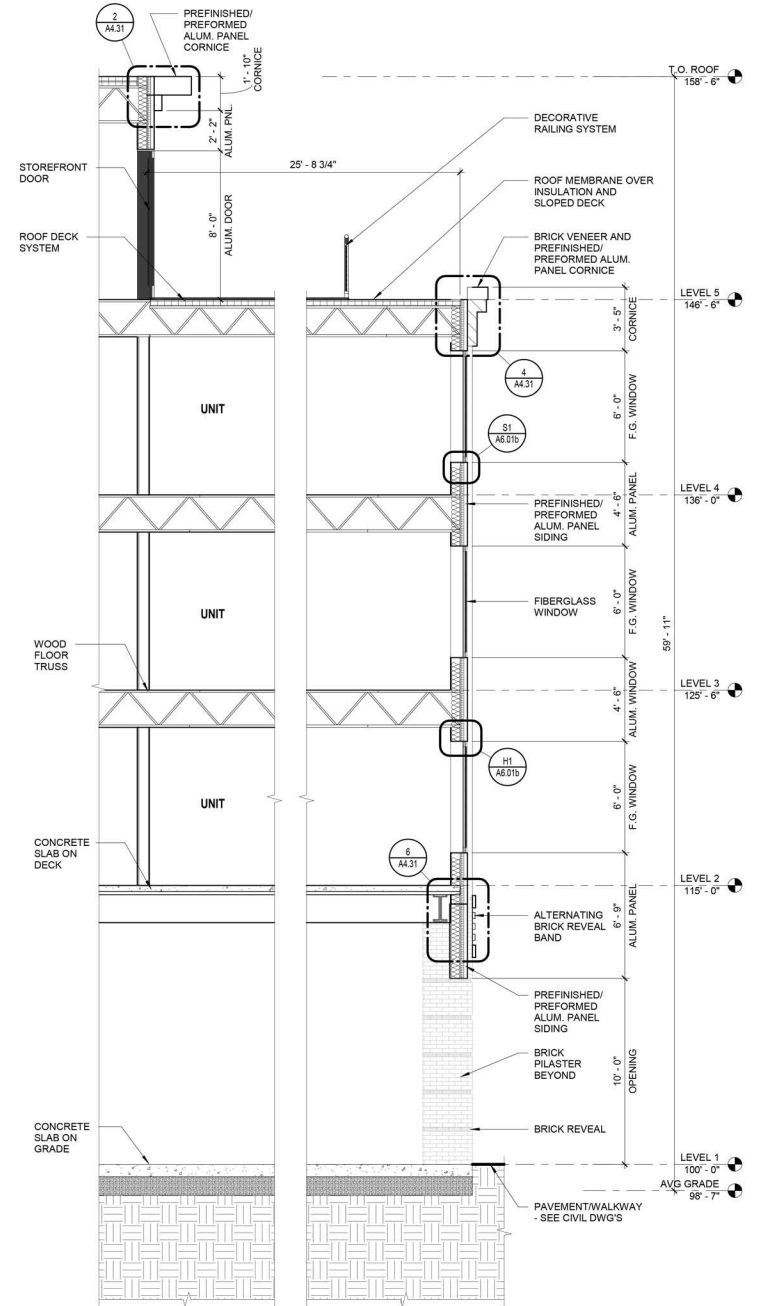
4 WALL SECTION - PARKING OPENING A
SCALE: 1/4" = 1'-0" REF SHEET: 1 / A3.04



3 WALL SECTION - PILASTER
SCALE: 1/4" = 1'-0" REF SHEET: 1 / A3.04



2 WALL SECTION - PARKING WINDOW OPENING A
SCALE: 1/4" = 1'-0" REF SHEET: 1 / A3.04



1 WALL SECTION - ROOF DECK
SCALE: 1/4" = 1'-0" REF SHEET: 2 / A3.03

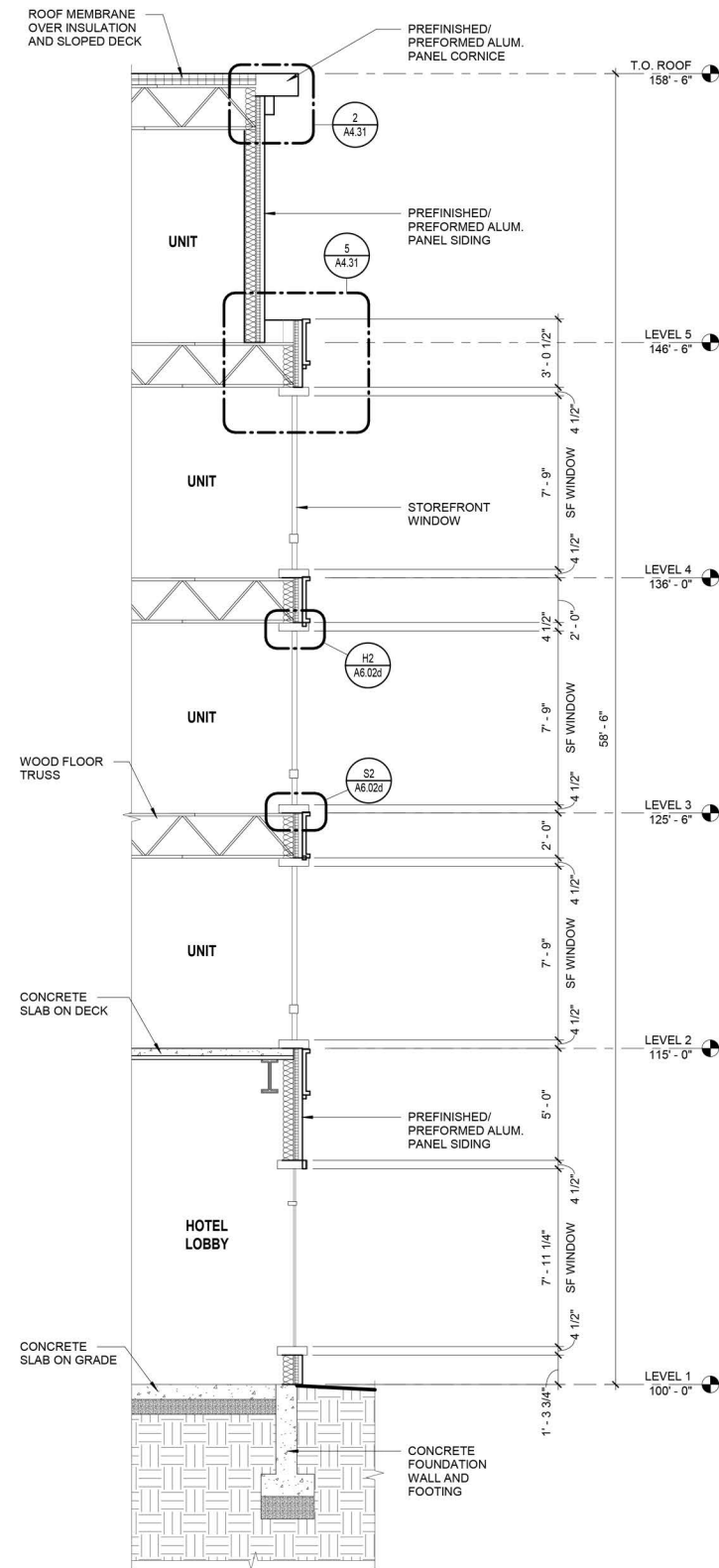


North Scale

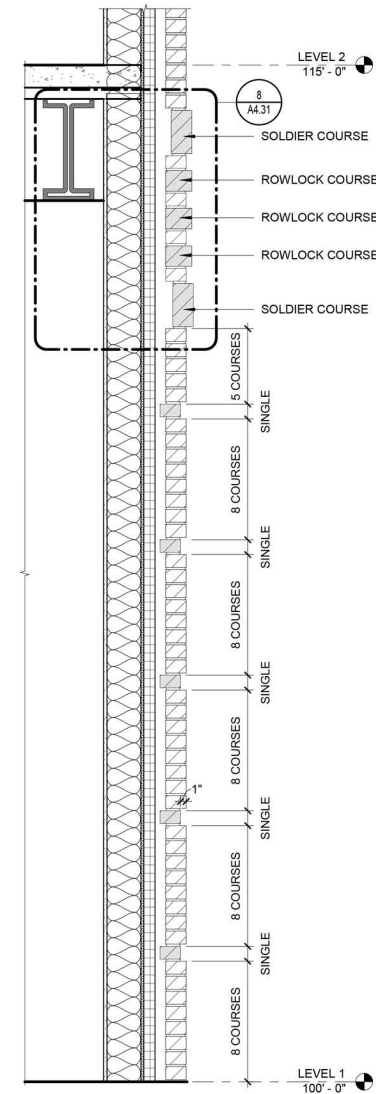
WALL SECTIONS

RAYNES AVE.
HOTEL

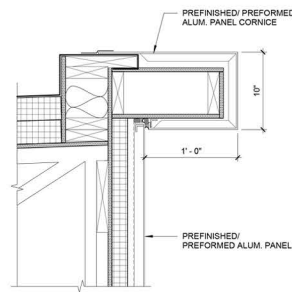
Dwg. No.
A4.12



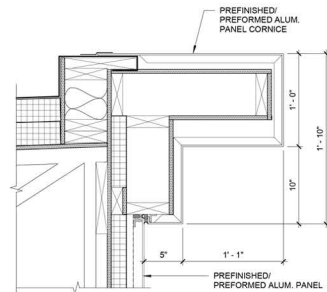
1 WALL SECTION - CORNER BUMP-OUT
SCALE: 1/4" = 1'-0" REF SHEET: 2 / A3.05



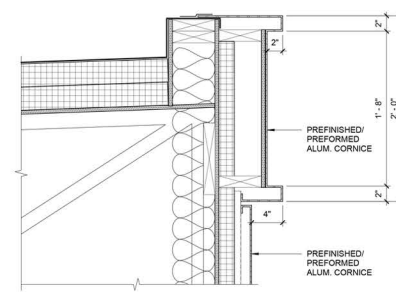
2 BRICK REVEAL DETAIL
SCALE: 3/4" = 1'-0" REF SHEET: 1 / A4.11



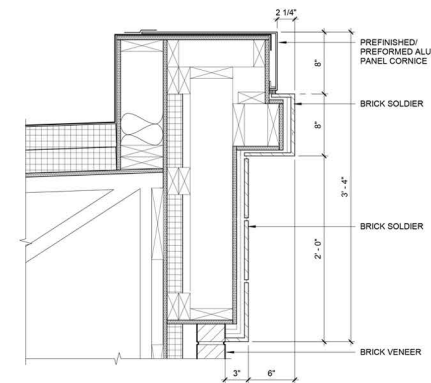
1 PREFORMED METAL CORNICE AT STAIR ROOF
SCALE: 1 1/2" = 1'-0" REF SHEET: 3 / A4.11



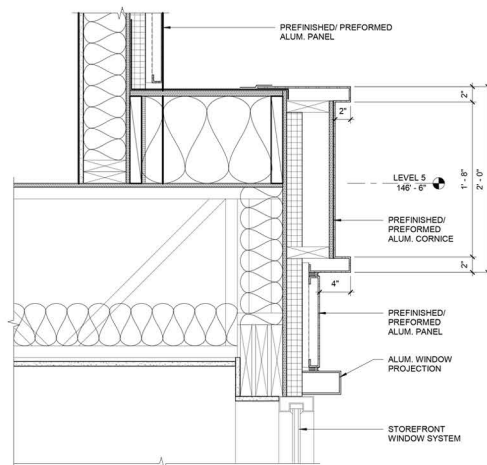
2 PREFORMED METAL CORNICE AT ROOF
SCALE: 1 1/2" = 1'-0" REF SHEET: 1 / A4.11



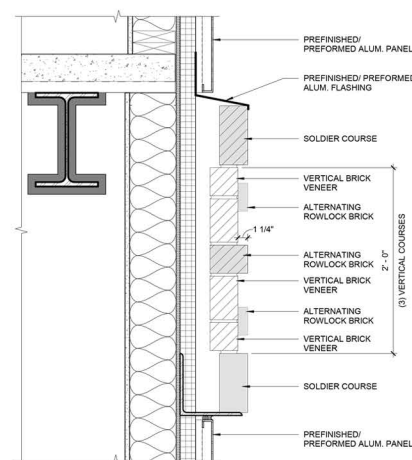
3 PREFORMED METAL CORNICE AT ENTRY ROOF
SCALE: 1 1/2" = 1'-0" REF SHEET: 2 / A4.11



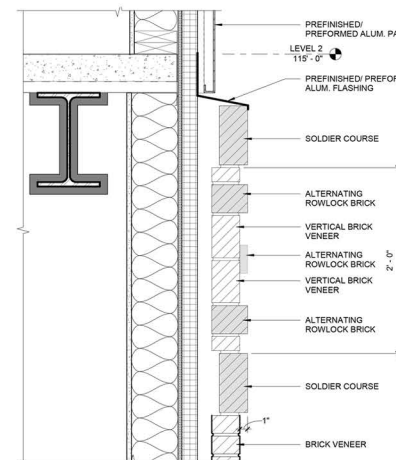
4 BRICK CORNICE AT L5
SCALE: 1 1/2" = 1'-0" REF SHEET: 1 / A4.12



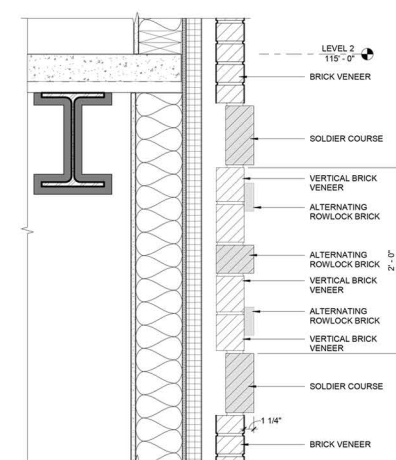
5 PREFORMED METAL CORNICE AT BUMP-OUT
SCALE: 1 1/2" = 1'-0" REF SHEET: 1 / A4.13



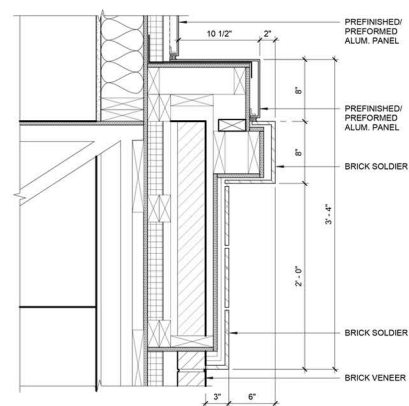
6 BRICK BAND DETAIL AT METAL PANEL/ METAL PANEL
SCALE: 1 1/2" = 1'-0" REF SHEET: 1 / A4.12



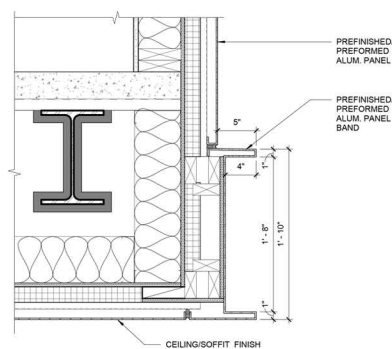
7 BRICK BAND DETAIL AT METAL PANEL/ BRICK
SCALE: 1 1/2" = 1'-0" REF SHEET: 2 / A4.12



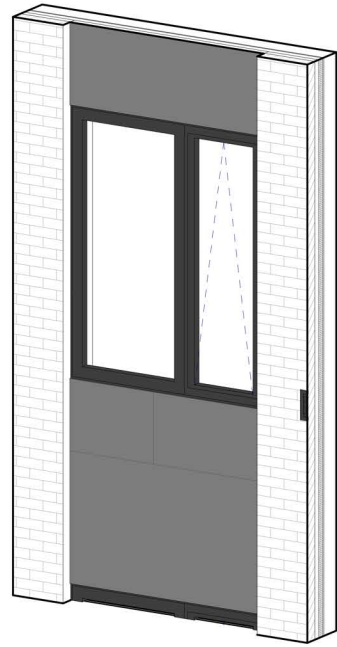
8 BRICK BAND DETAIL AT BRICK/ BRICK
SCALE: 1 1/2" = 1'-0" REF SHEET: 1 / A4.11



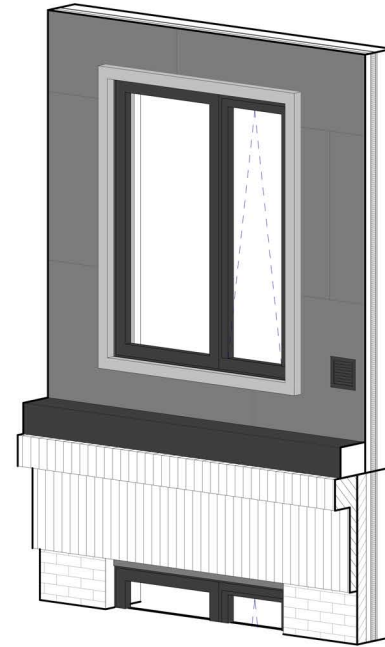
9 BRICK BAND AT L5
SCALE: 1 1/2" = 1'-0" REF SHEET: 1 / A4.11



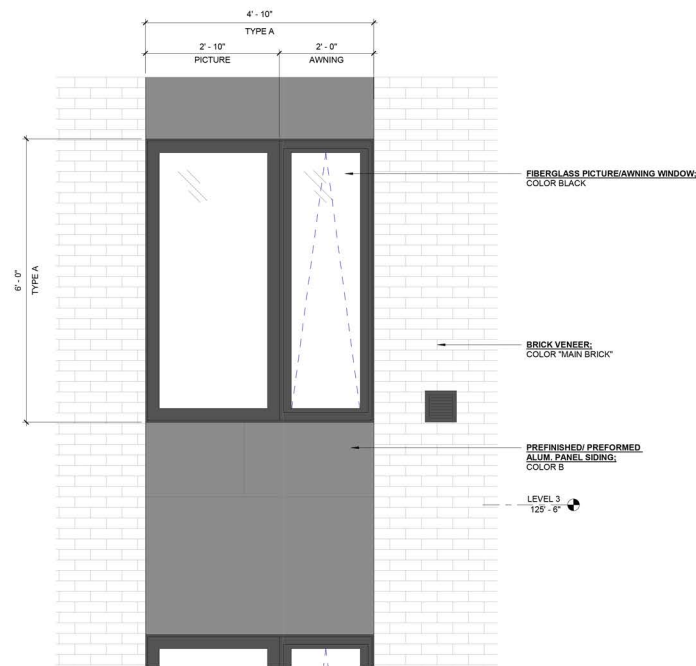
10 PREFORMED METAL BAND AT L2 OVERHANG
SCALE: 1 1/2" = 1'-0" REF SHEET: 5 / A4.11



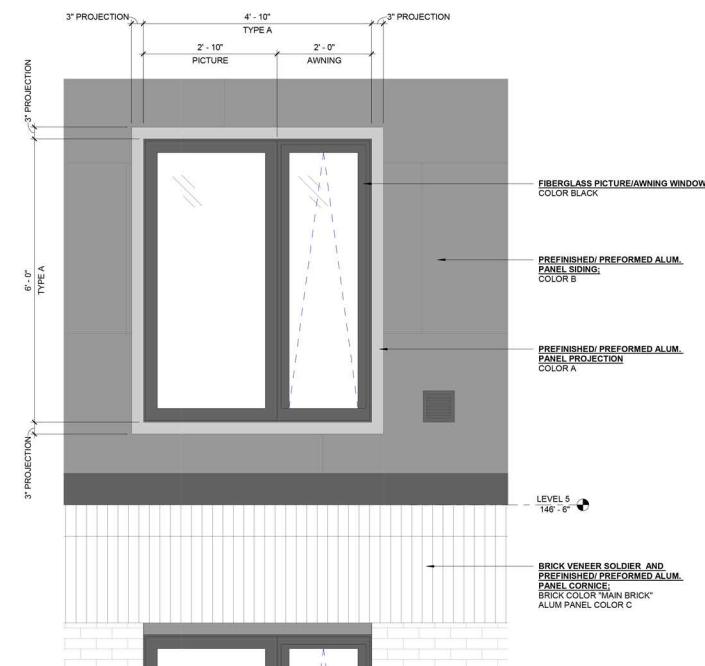
1A ENLARGED FIBERGLASS WINDOW IN METAL PANEL/BRICK VENEER LEVEL 2-4 3D



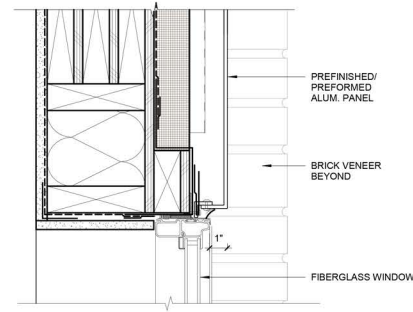
2A ENLARGED FIBERGLASS WINDOW IN METAL PANEL LEVEL 5 3D



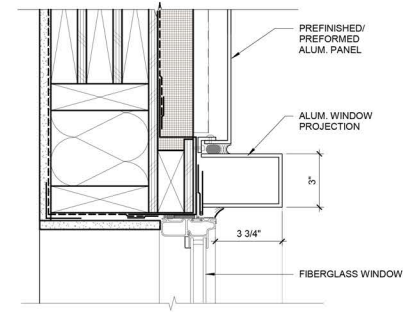
1 ENLARGED FIBERGLASS WINDOW IN METAL PANEL/BRICK VENEER LEVEL 2-4
SCALE: 3/4" = 1'-0" REF SHEET: 1 / A3.01



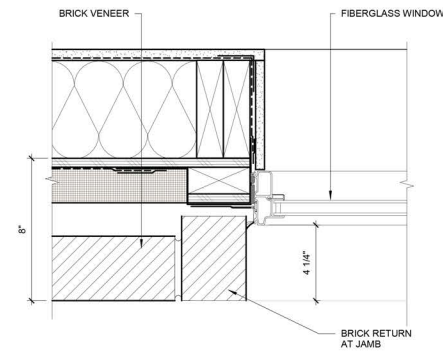
2 ENLARGED FIBERGLASS WINDOW IN METAL PANEL LEVEL 5
SCALE: 3/4" = 1'-0" REF SHEET: 1 / A3.01



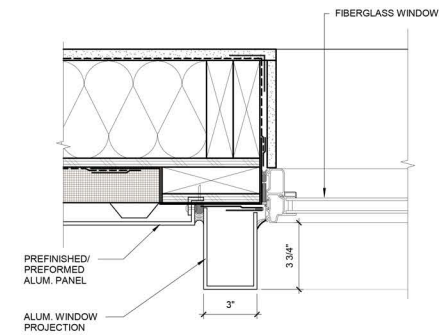
H1 FIBERGLASS WINDOW HEAD AT BRICK
SCALE: 3" = 1'-0"



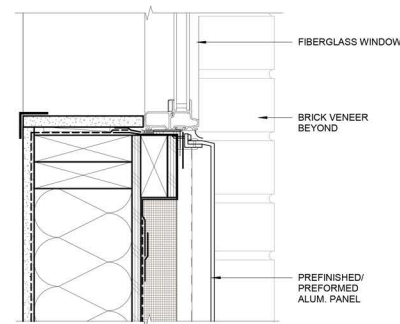
H2 FIBERGLASS WINDOW HEAD W/ PROJECTION
SCALE: 3" = 1'-0"



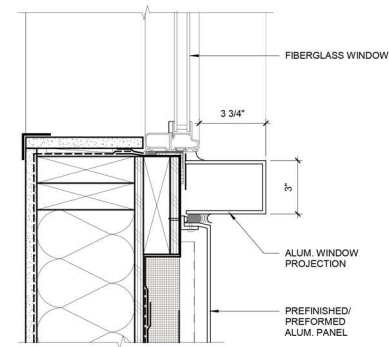
J1 FIBERGLASS WINDOW JAMB AT BRICK
SCALE: 3" = 1'-0"



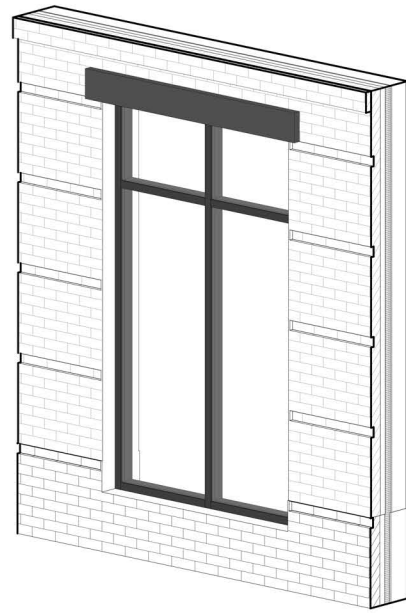
J2 FIBERGLASS WINDOW JAMB W/ PROJECTION
SCALE: 3" = 1'-0"



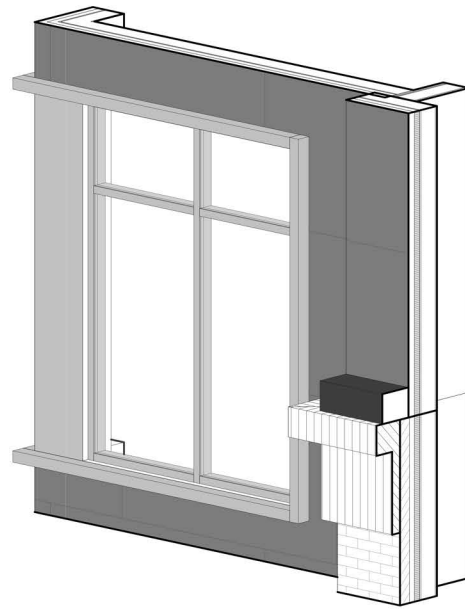
S1 FIBERGLASS WINDOW SILL AT BRICK
SCALE: 3" = 1'-0"



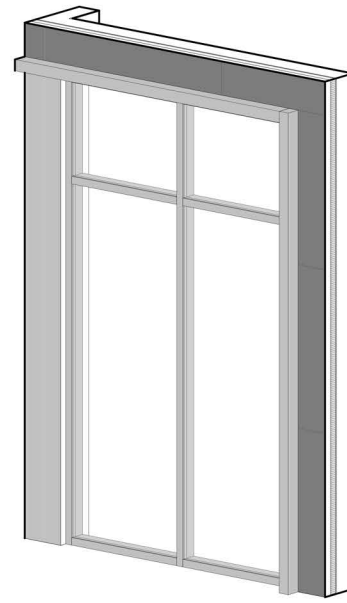
S2 FIBERGLASS WINDOW SILL W/ PROJECTION
SCALE: 3" = 1'-0"



1A ENLARGED STOREFRONT WINDOW ELEVATION IN BRICK VENEER LEVEL 1 3D



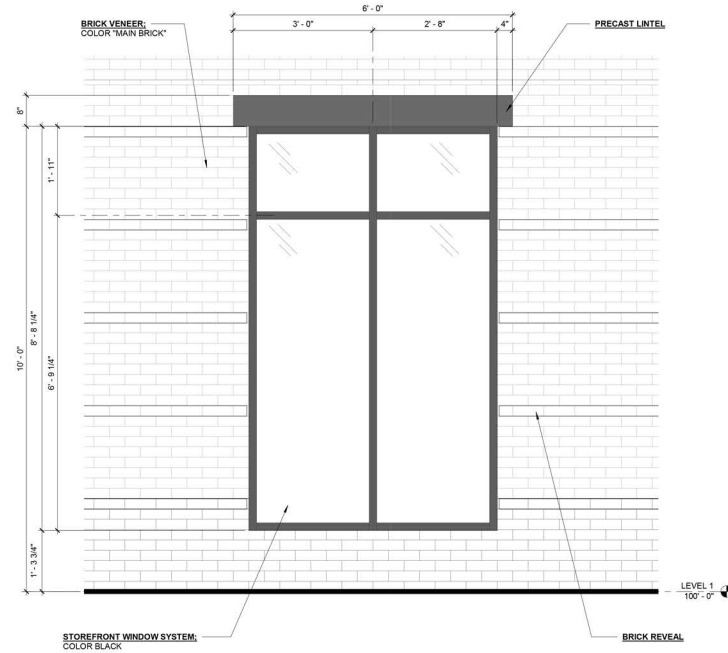
2A ENLARGED STOREFRONT WINDOW IN METAL PANEL AT STAIR LEVEL 2-5 3D



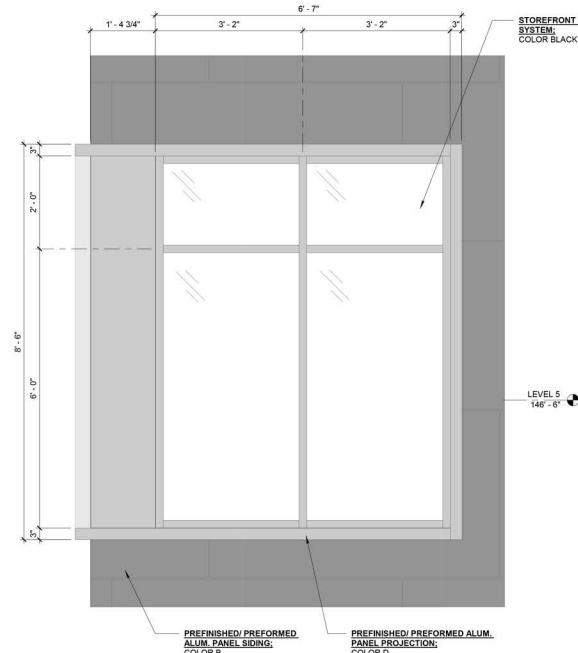
3A ENLARGED STOREFRONT WINDOW IN METAL PANEL AT STAIR LEVEL 1 3D



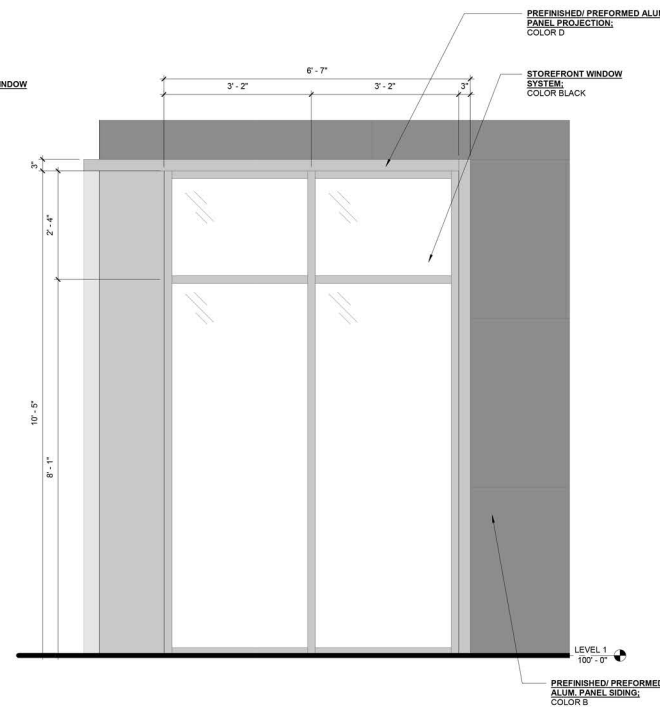
4A ENLARGED STOREFRONT WINDOW/DOOR IN METAL PANEL AT STAIR LEVEL 1 3D



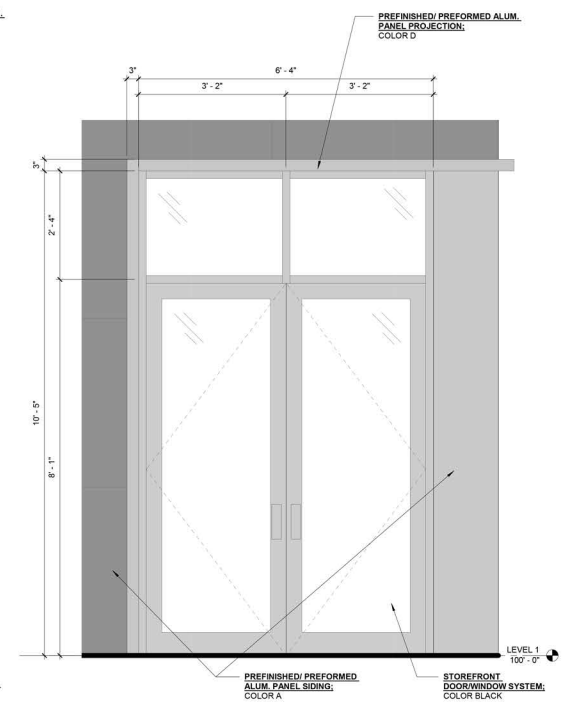
1 ENLARGED STOREFRONT WINDOW ELEVATION IN BRICK VENEER LEVEL 1
SCALE: 3/4" = 1'-0" REF SHEET: 1 / A3.01



2 ENLARGED STOREFRONT WINDOW IN METAL PANEL AT STAIR LEVEL 2-5
SCALE: 3/4" = 1'-0" REF SHEET: 1 / A3.01



3 ENLARGED STOREFRONT WINDOW IN METAL PANEL AT STAIR LEVEL 1
SCALE: 3/4" = 1'-0" REF SHEET: 1 / A3.01



4 ENLARGED STOREFRONT WINDOW/DOOR IN METAL PANEL AT STAIR LEVEL 1
SCALE: 3/4" = 1'-0" REF SHEET: 1 / A3.02



North Scale

ALUMINUM STOREFRONT ELEVATIONS

RAYNES AVE. HOTEL Project

Dwg. No. A6.02a

HISTORIC DISTRICT COMMISSION APPLICATION FOR APPROVAL:
DECEMBER 7, 2022

4.19
NOT TO SCALE



1 ENLARGED STOREFRONT ELEVATION AT HOTEL ENTRY 1 3D



4 ENLARGED STOREFRONT ELEVATION AT HOTEL ENTRY 2 3D



3 ENLARGED STOREFRONT WINDOW AT HOTEL ENTRY 1
 SCALE: 3/4" = 1'-0" REF SHEET: 1 / A3.01



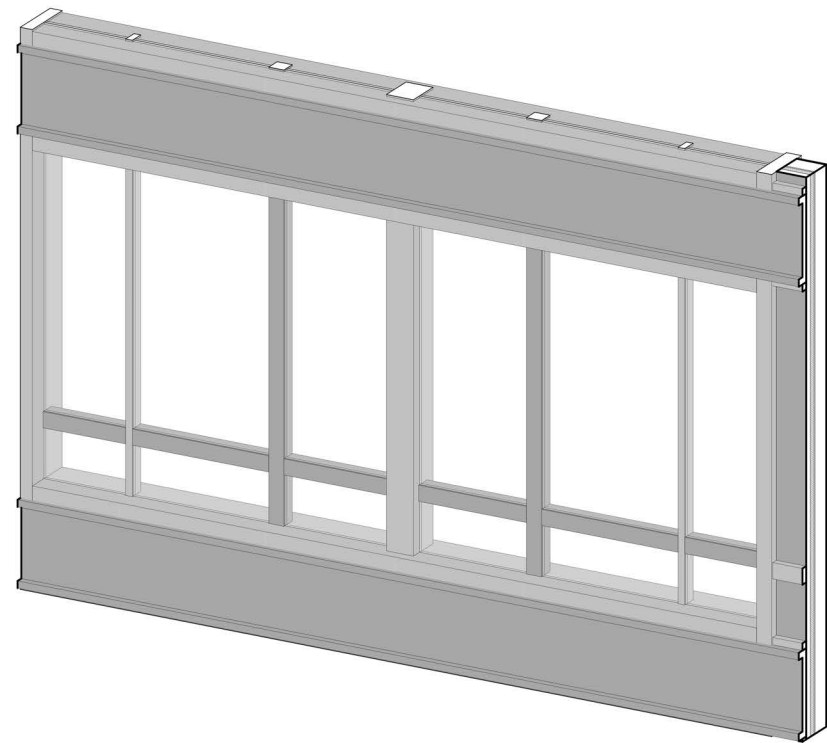
2 ENLARGED WINDOW ELEVATION AT HOTEL ENTRY 2
 SCALE: 3/4" = 1'-0" REF SHEET: 1 / A3.02



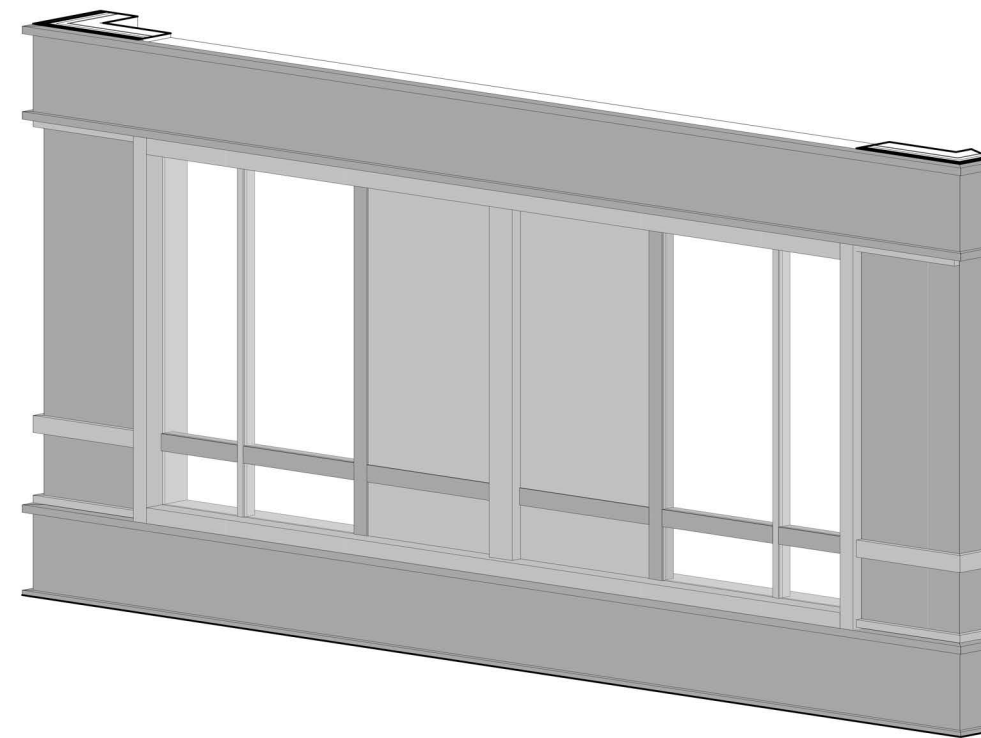
ALUMINUM STOREFRONT ELEVATIONS

RAYNES AVE. HOTEL

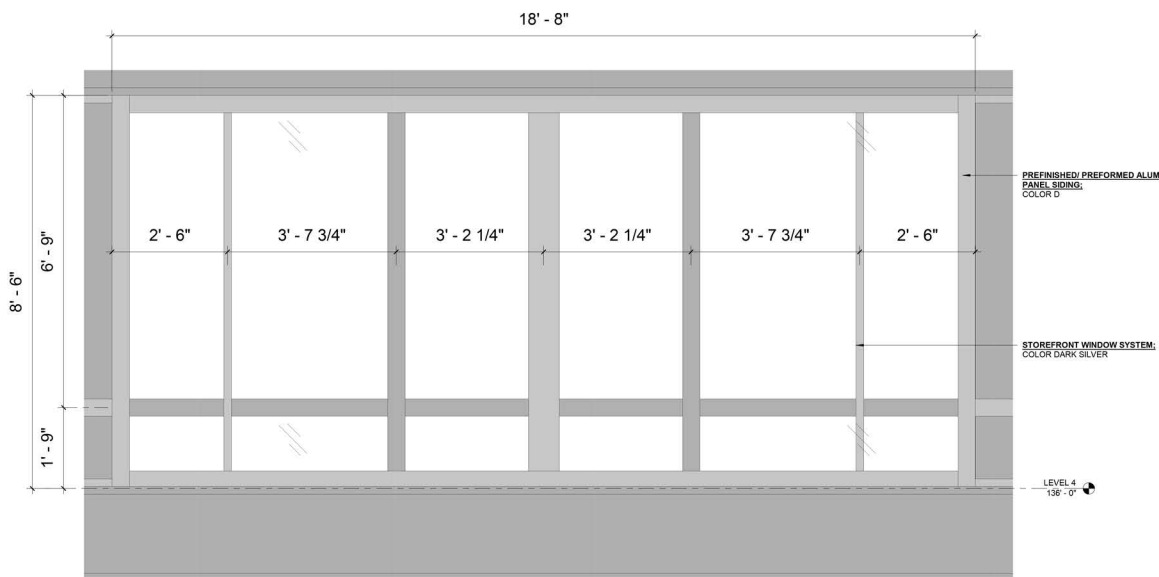
Dwg. No. A6.02b



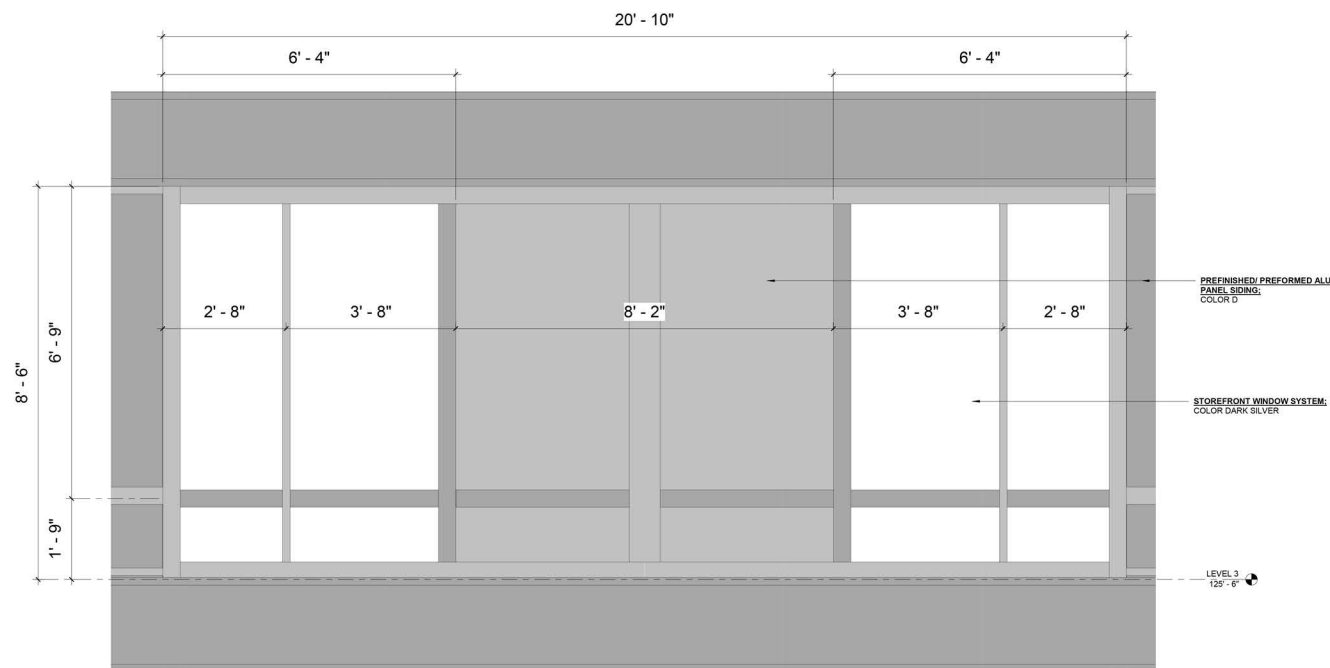
1A ENLARGED STOREFRONT ELEVATION AT ENTRY LEVEL 2-5 3D



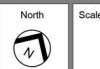
2A ENLARGED STOREFRONT WINDOW IN METAL PANEL AT FRONT LEVEL 1-4 3D



1 ENLARGED STOREFRONT WINDOW AT ENTRY LEVEL 2-5
SCALE: 3/4" = 1'-0" REF SHEET: 1 / A3.01



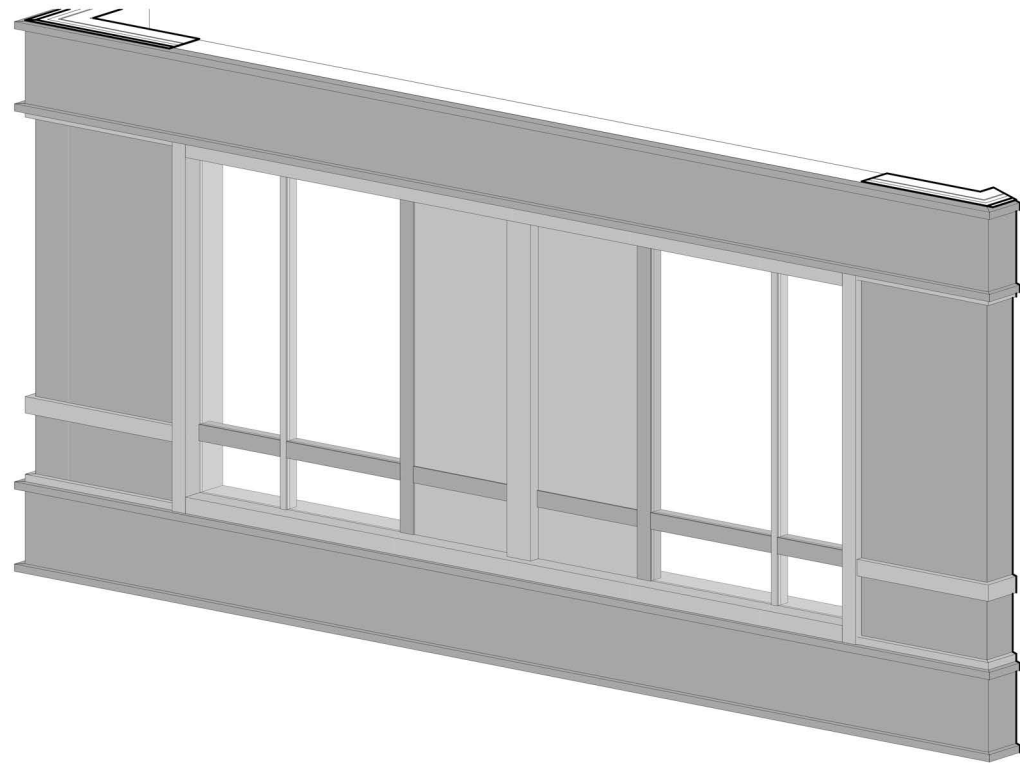
2 ENLARGED STOREFRONT WINDOW IN METAL PANEL AT FRONT LEVEL 1-4
SCALE: 3/4" = 1'-0" REF SHEET: 2 / A3.05



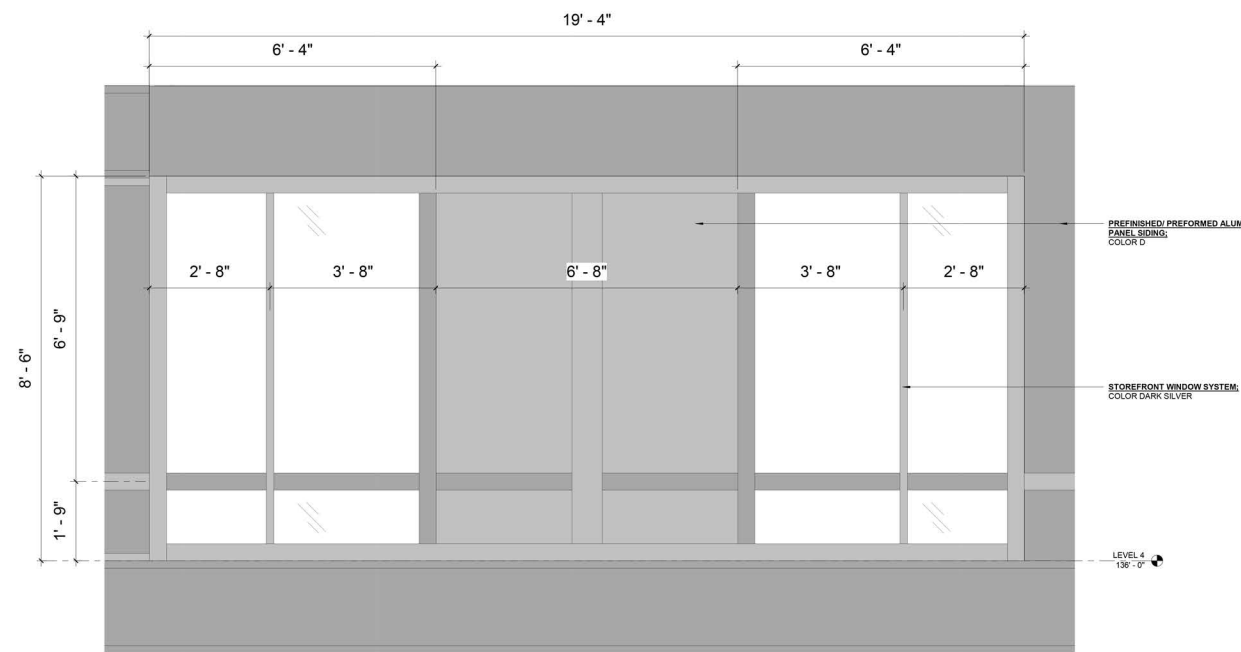
ALUMINUM STOREFRONT ELEVATIONS

RAYNES AVE.
HOTEL

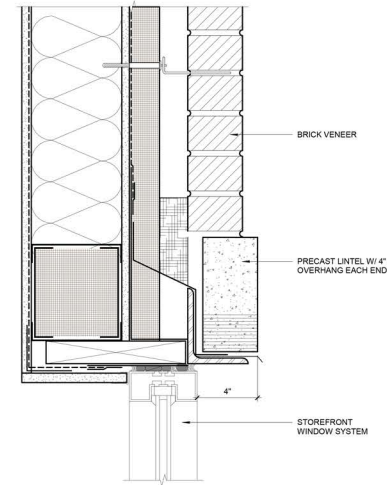
Dwg. No.
A6.02c



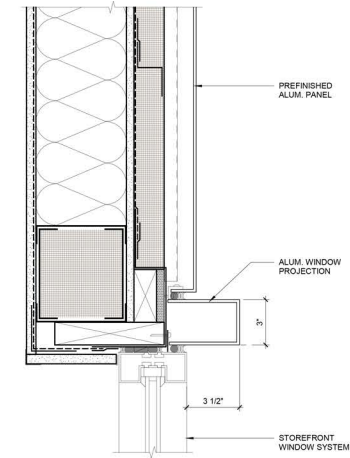
1A ENLARGED STOREFRONT WINDOW IN METAL PANEL AT SIDE
LEVEL 2-5 3D



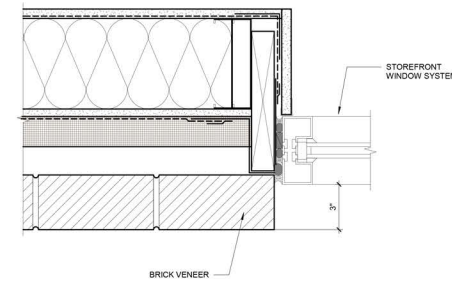
1 ENLARGED STOREFRONT WINDOW IN METAL PANEL AT SIDE
LEVEL 2-5
SCALE: 3/4" = 1'-0" REF SHEET: 1 / A3.05



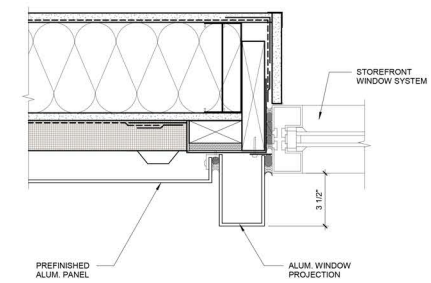
H1 STOREFRONT HEAD AT BRICK
SCALE: 3" = 1'-0"



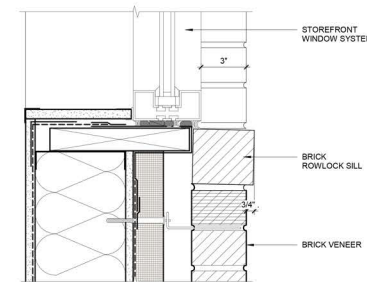
H2 STOREFRONT HEAD W/ PROJECTION
SCALE: 3" = 1'-0"



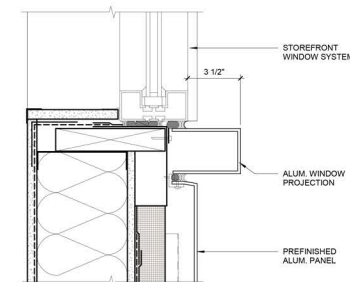
J1 STOREFRONT JAMB AT BRICK
SCALE: 3" = 1'-0"



J2 STOREFRONT JAMB W/ PROJECTION
SCALE: 3" = 1'-0"



S1 STOREFRONT SILL AT BRICK
SCALE: 3" = 1'-0"



S2 STOREFRONT SILL W/ PROJECTION
SCALE: 3" = 1'-0"