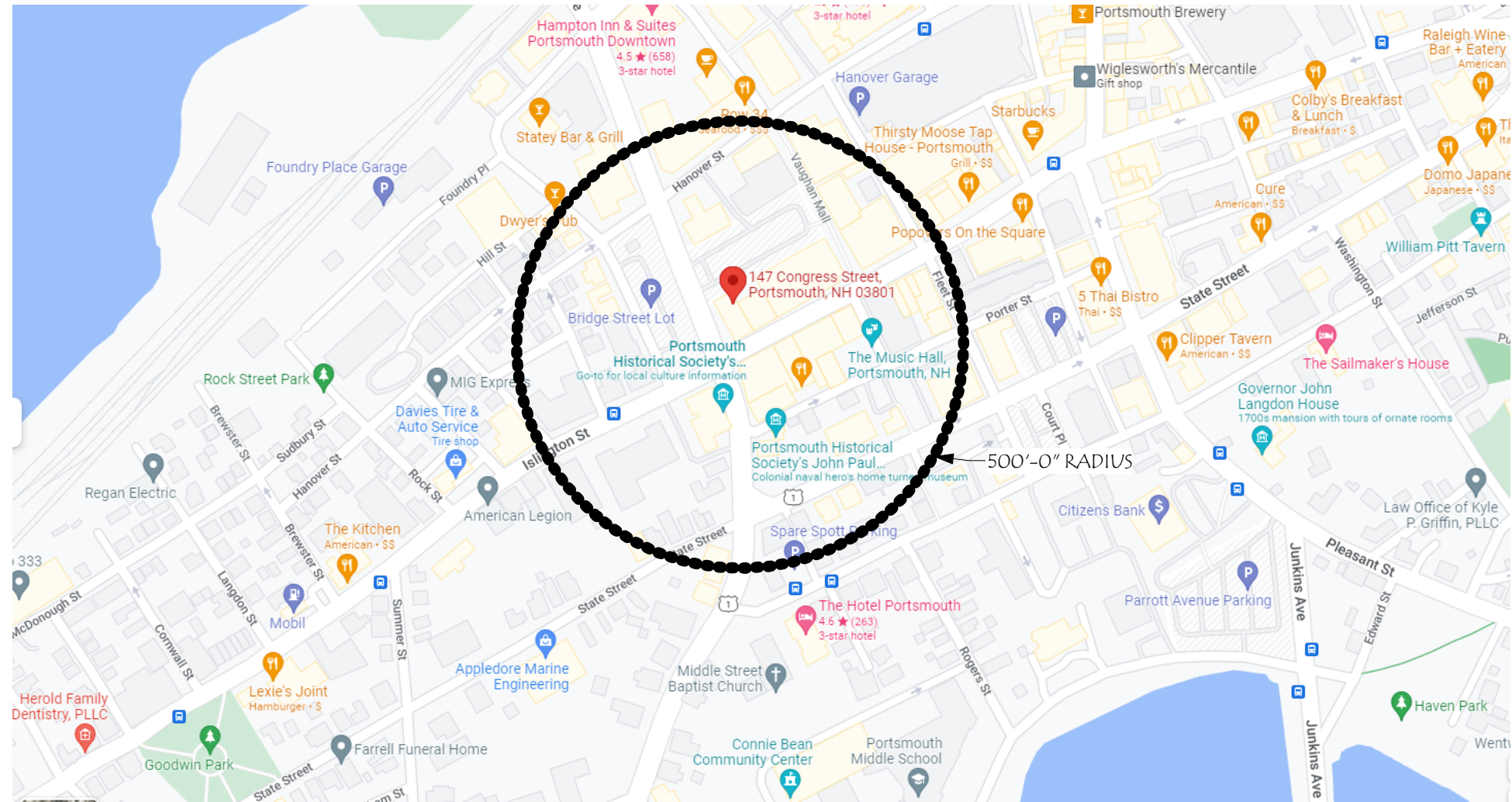


147 CONGRESS STREET

GENERAL PROJECT DESCRIPTION:

THIS PROJECT CONSISTS OF THE ADDITION OF A NEW GROUND UP SINGLE STORY STRUCTURE TO AN EXISTING BUILDING



ZONING SUMMARY:

ZONING DISTRICT: HISTORIC DISTRICT CD5,
 DOWNTOWN OVERLAY DISTRICT
 LOT SIZE: ~6,282 SF
 MIN OPEN SPACE: 5%
 BUILDING HEIGHT: 2-3 STORIES, 40'-0" ALLOWED
 MIN GROUND STORY HEIGHT : 12'-0" MIN REQUIRED
 MIN GROUND STORY HEIGHT: ~11'-0" EXISTING
 REQUIRED FACADE TYPE: SHOPFRONT

147 CONGRESS

147 Congress St
 Portsmouth, NH 03801

Revisions #	Description	Date

SCALE:	SNH
DRAWN BY:	RJH
CHECKED BY:	202209
PROJECT NO.:	10/05/22
DATE:	9/22/2022 4:21:48 PM

TITLE:	COVER SHEET
	1

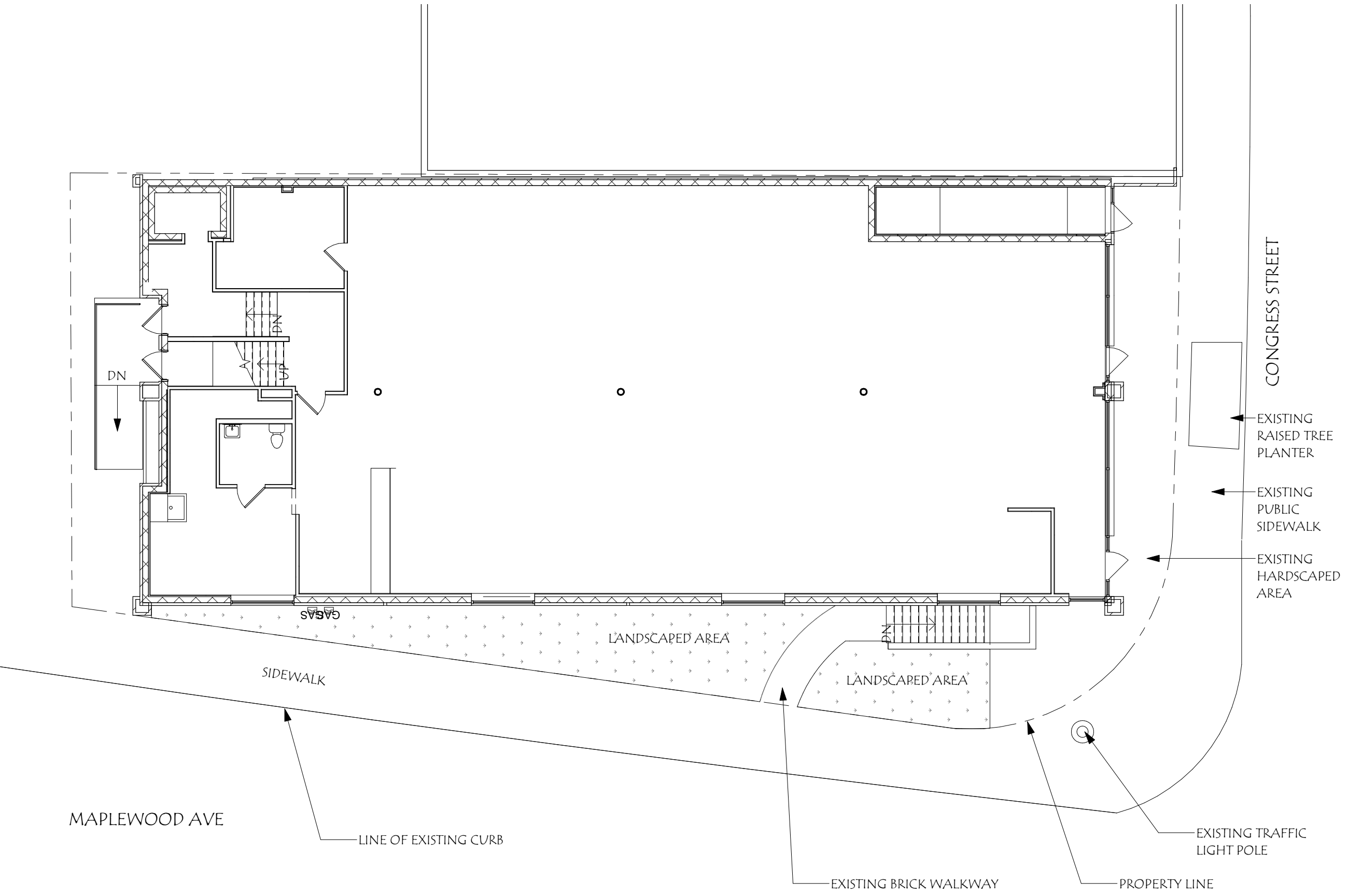


147 CONGRESS
 147 Congress St
 Portsmouth, NH 03801

Revisions #	Description	Date

SCALE:	SNH
DRAWN BY:	RJH
CHECKED BY:	202209
PROJECT NO.:	10/05/22
DATE:	9/22/2022 4:21:49 PM

TITLE:	EXISTING CONTEXT
	2



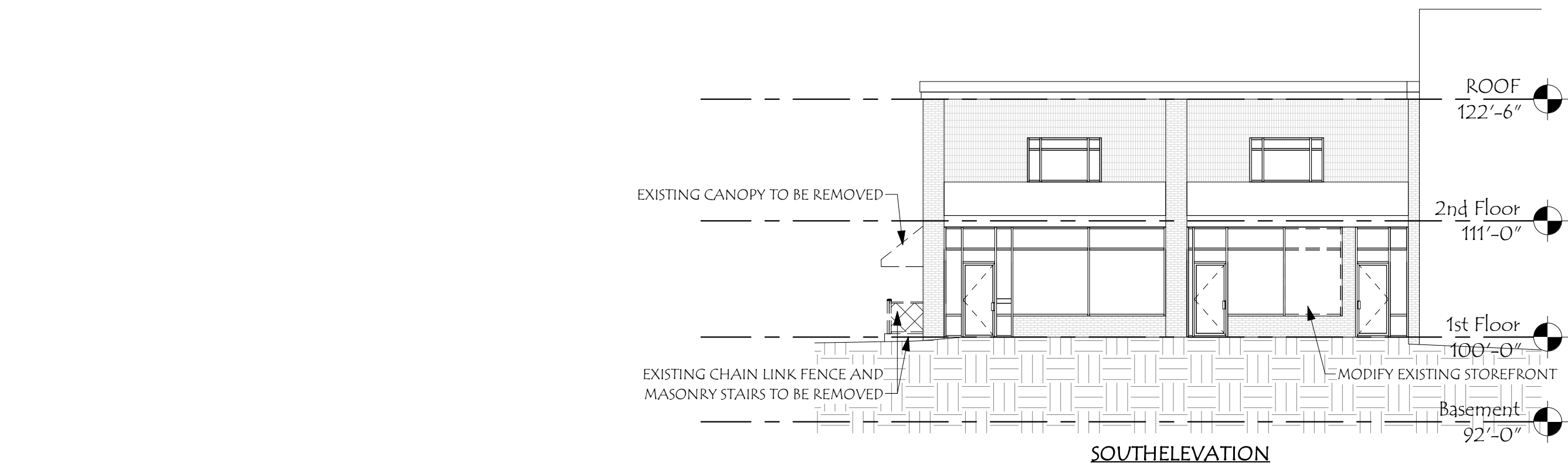
Revisions #	Description	Date

SCALE:	3/32" = 1'-0"
DRAWN BY:	SNH
CHECKED BY:	RJH
PROJECT NO.:	202209
DATE:	10/05/22

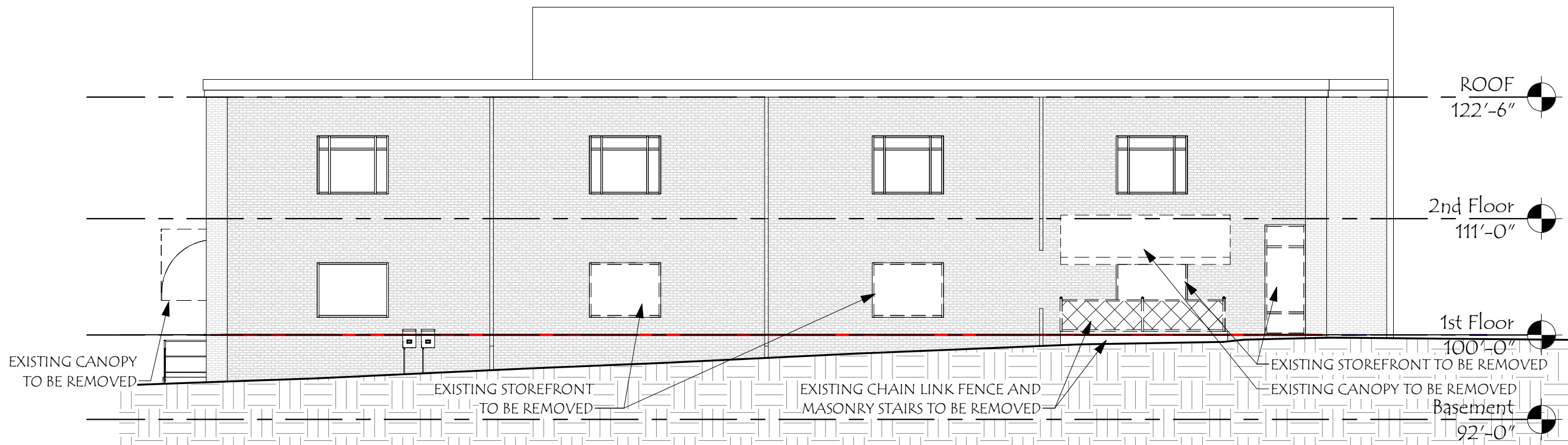
TITLE:	EXISTING PLAN
	3

147 CONGRESS

147 Congress St
 Portsmouth, NH 03801



SOUTH ELEVATION

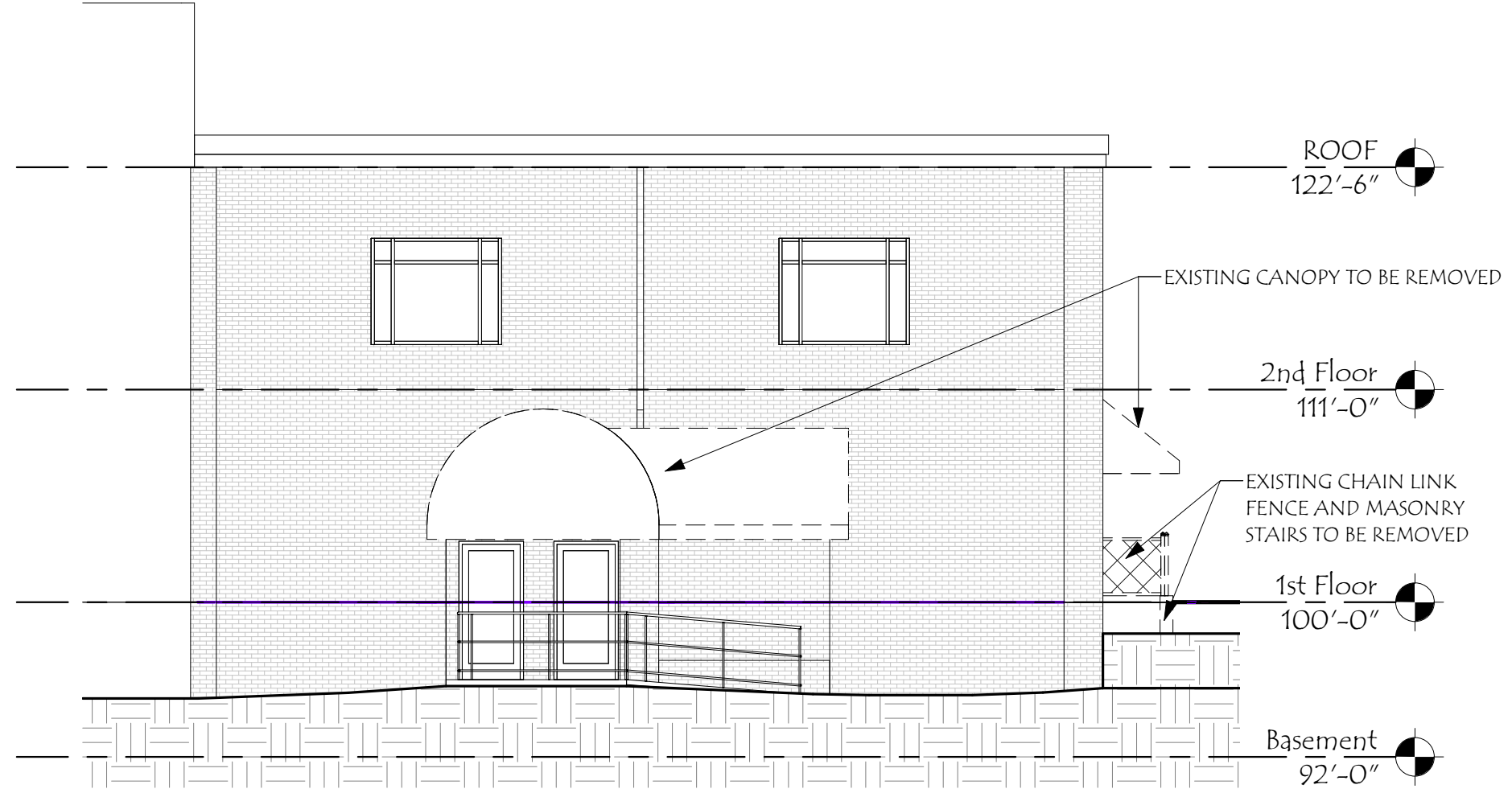


WEST ELEVATION

Revisions #	Description	Date

SCALE: 3/32" = 1'-0"	DRAWN BY: SNH	CHECKED BY: RJH	PROJECT NO.: 202209	DATE: 10/05/22
----------------------	---------------	-----------------	---------------------	----------------

TITLE: DEMO ELEVATIONS	4
------------------------	---



NORTH ELEVATION

147 CONGRESS

147 Congress St
 Portsmouth, NH 03801

Revisions #	Description	Date

SCALE:	1/8" = 1'-0"
DRAWN BY:	SNH
CHECKED BY:	RJH
PROJECT NO.:	202209
DATE:	10/05/22

TITLE:	DEMO ELEVATIONS
	5



147 CONGRESS ST

147 CONGRESS

147 Congress St
 Portsmouth, NH 03801

Revisions #	Description	Date

SCALE:	SNH
DRAWN BY:	RJH
CHECKED BY:	202209
PROJECT NO.:	10/05/22
DATE:	9/22/2022 4:21:52 PM

TITLE:	PROPOSED CONTEXT
	6



147 CONGRESS ST

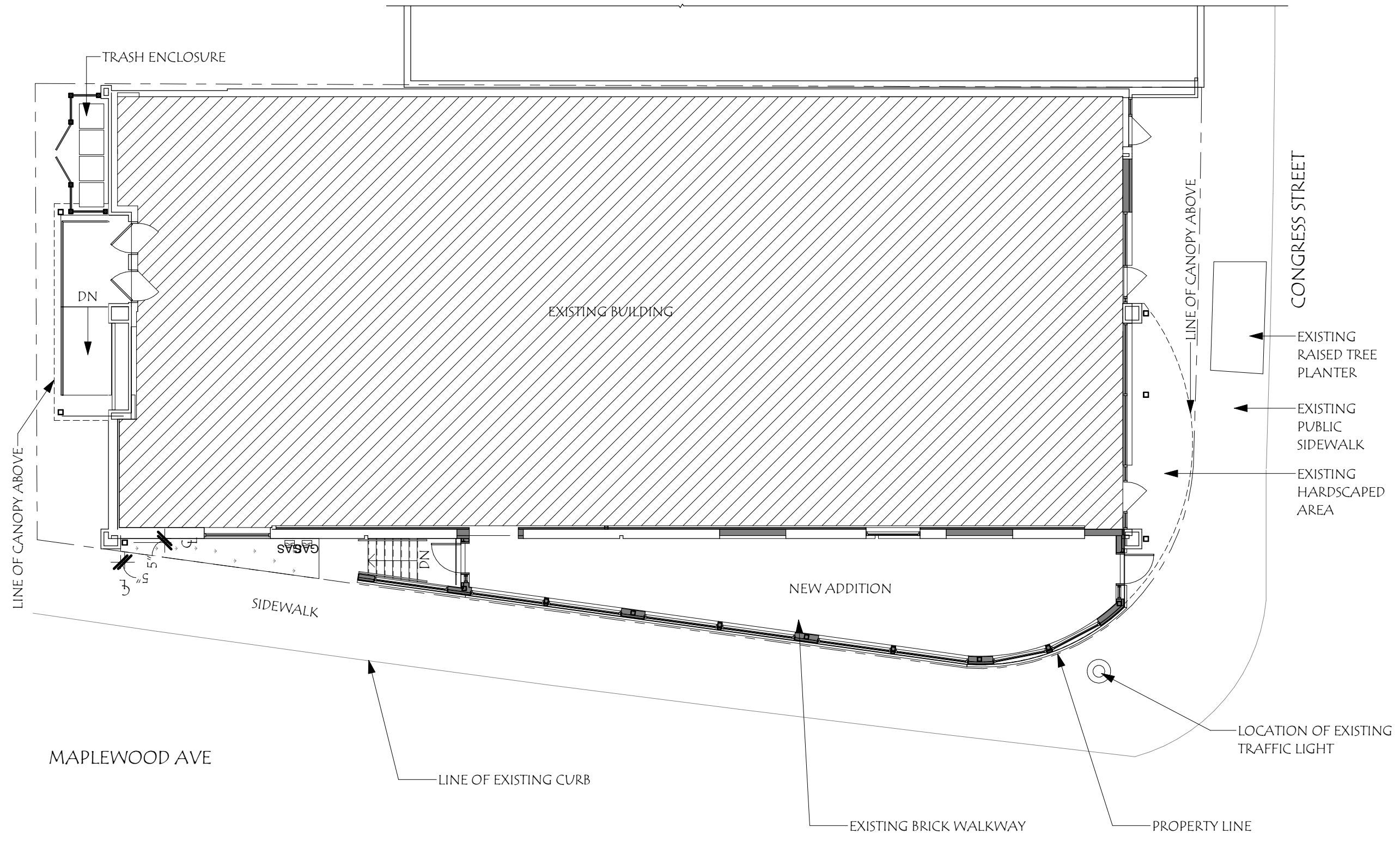
147 CONGRESS

147 Congress St
 Portsmouth, NH 03801

Revisions #	Description	Date

SCALE:	SNH
DRAWN BY:	RJH
CHECKED BY:	202209
PROJECT NO.:	10/05/22
DATE:	

TITLE:	7
PROPOSED CONTEXT	



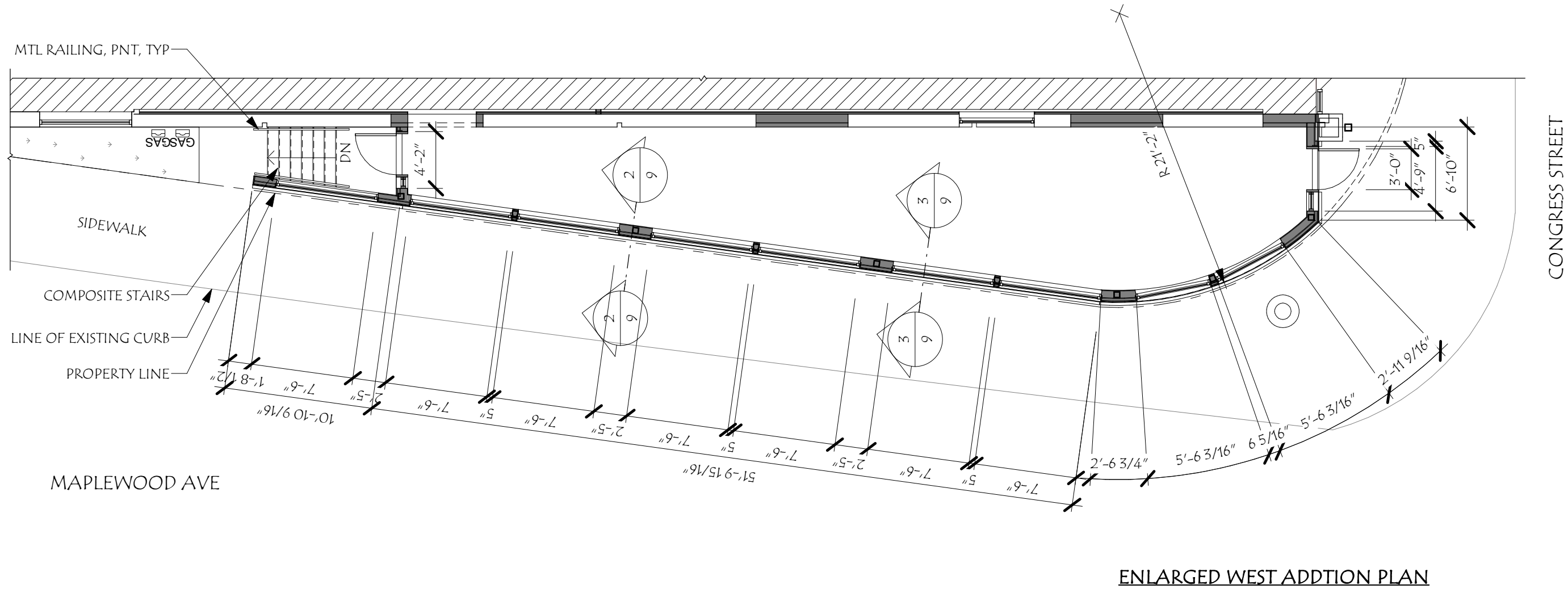
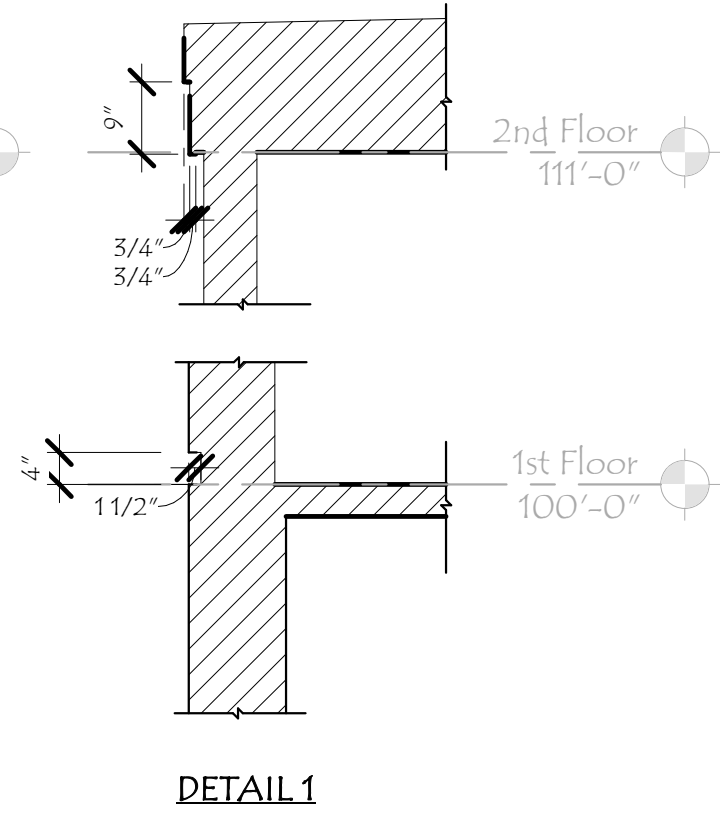
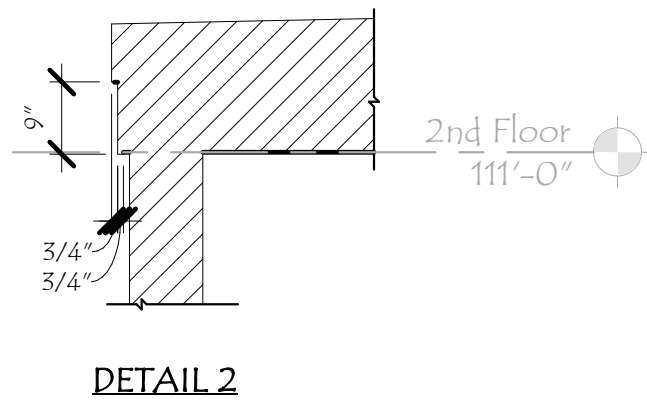
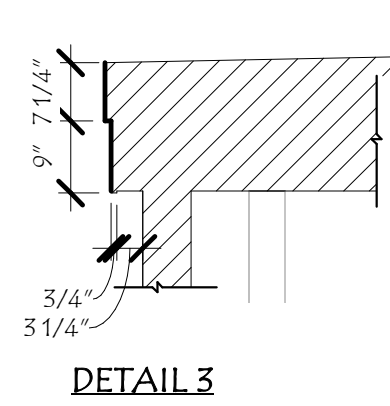
Revisions #	Description	Date

SCALE:	3/32" = 1'-0"
DRAWN BY:	SNH
CHECKED BY:	RJH
PROJECT NO.:	202209
DATE:	10/05/22

TITLE:	PROPOSED PLAN
	8

147 CONGRESS

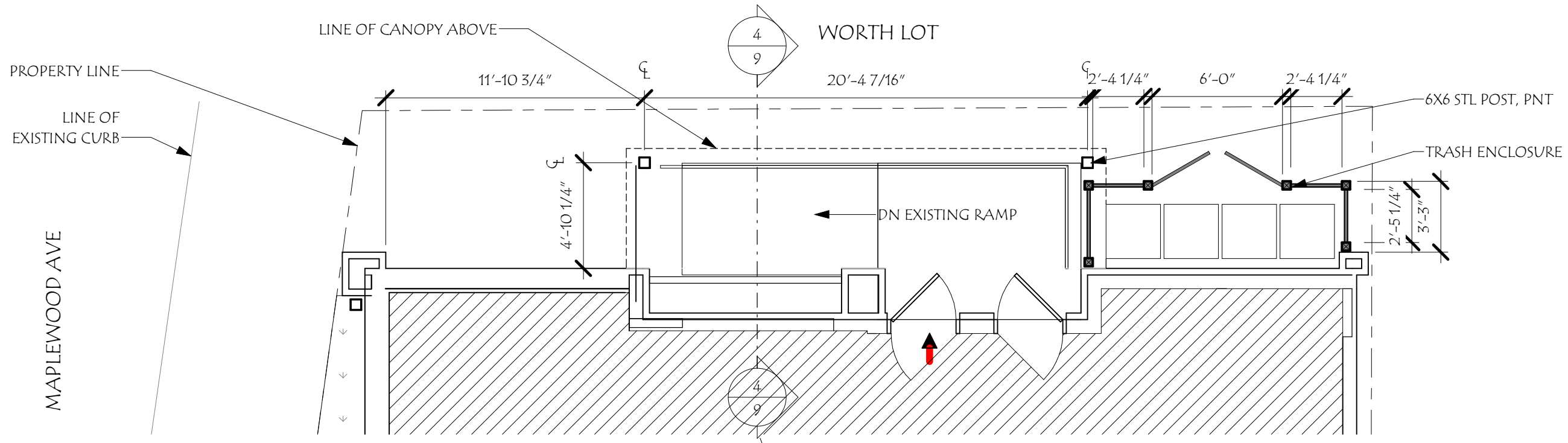
147 Congress St
 Portsmouth, NH 03801



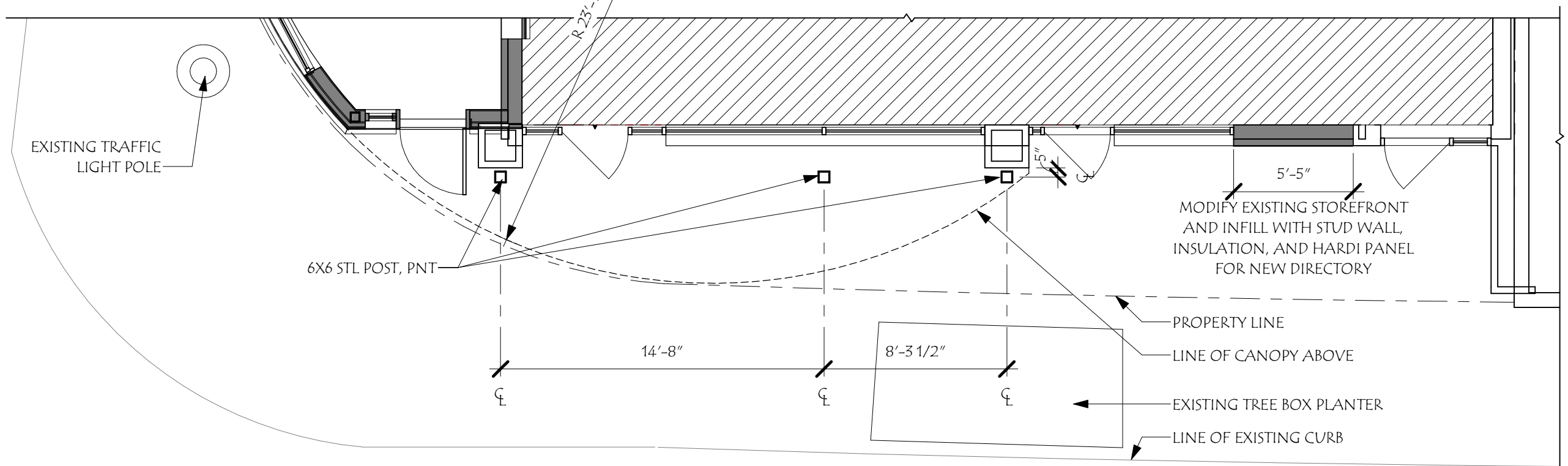
Revisions #	Description	Date

SCALE:	As Indicated
DRAWN BY:	SNH
CHECKED BY:	RJH
PROJECT NO.:	202209
DATE:	10/05/22

TITLE:	ENLARGED PLAN
	9



ENLARGED NORTH CANOPY PLAN

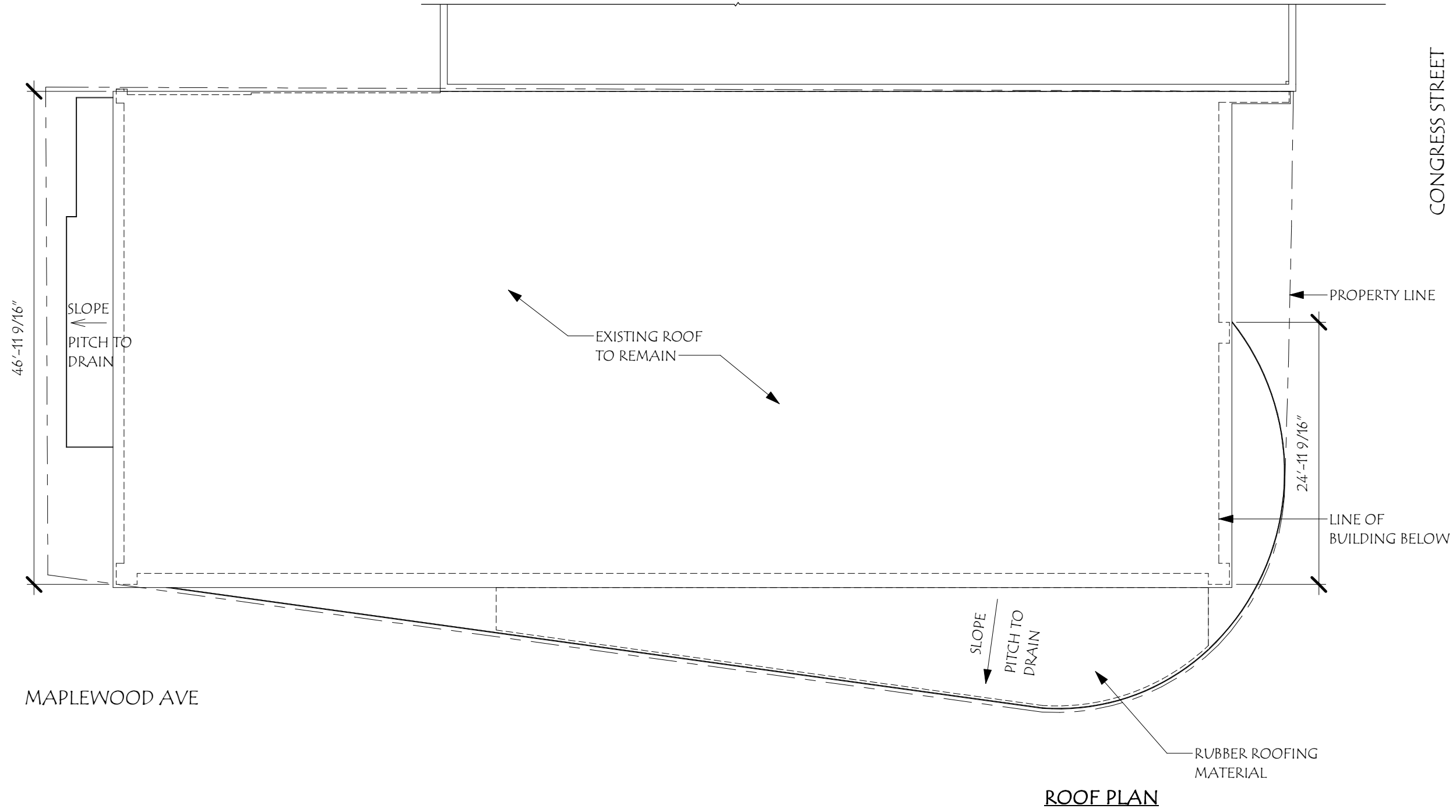


ENLARGED SOUTH CANOPY PLAN

Revisions #	Description	Date

SCALE: 3/16" = 1'-0"	DRAWN BY: SNH	CHECKED BY: RJH	PROJECT NO.: 202209	DATE: 10/05/22
----------------------	---------------	-----------------	---------------------	----------------

TITLE: ENLARGED PLAN	10
----------------------	----



HISTORIC DISTRICT COMMISSION WORKSESSION/ PUBLIC HEARING OCTOBER 2022

147 CONGRESS
 147 Congress St
 Portsmouth, NH 03801

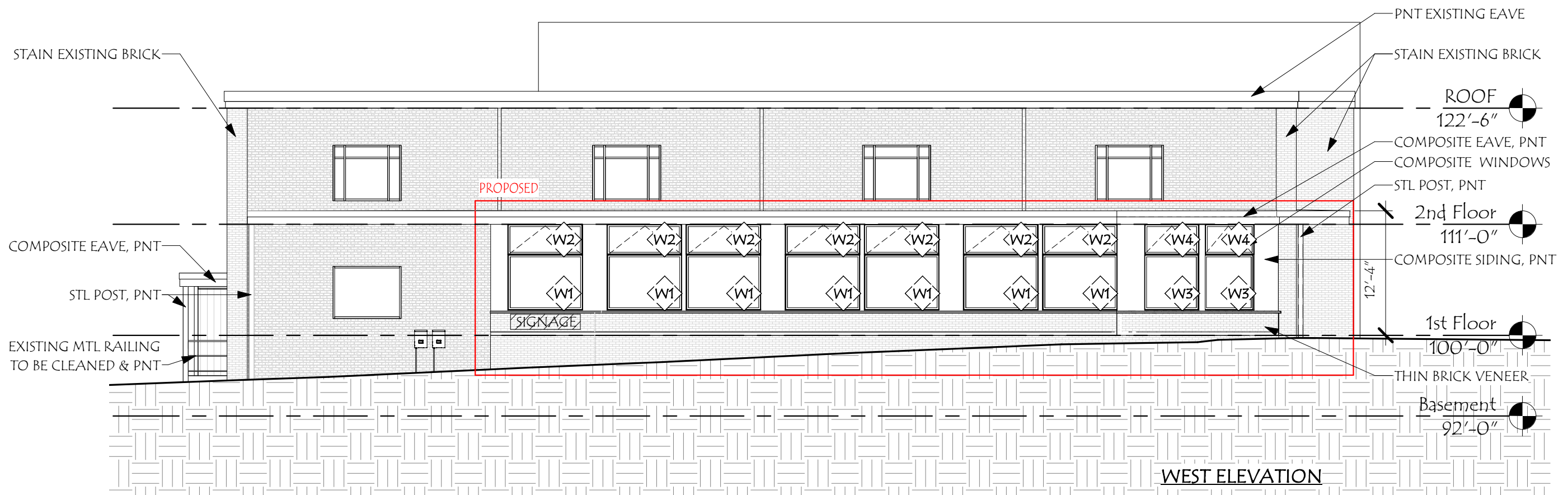
Revisions #	Description	Date

SCALE:	3/32" = 1'-0"
DRAWN BY:	SNH
CHECKED BY:	RJH
PROJECT NO.:	202209
DATE:	10/05/22

TITLE:	ROOF PLAN
	11



INSPIRATION IMAGES AND MATERIALS



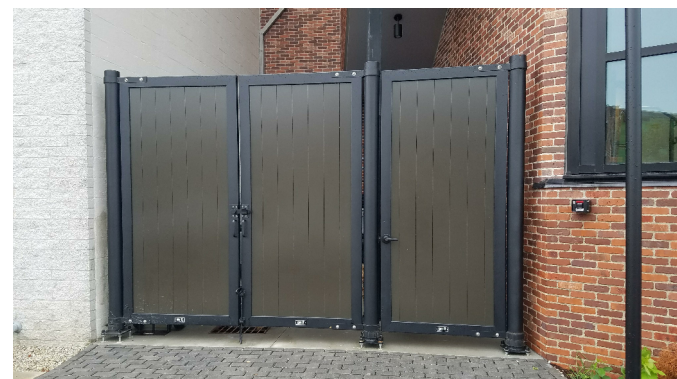
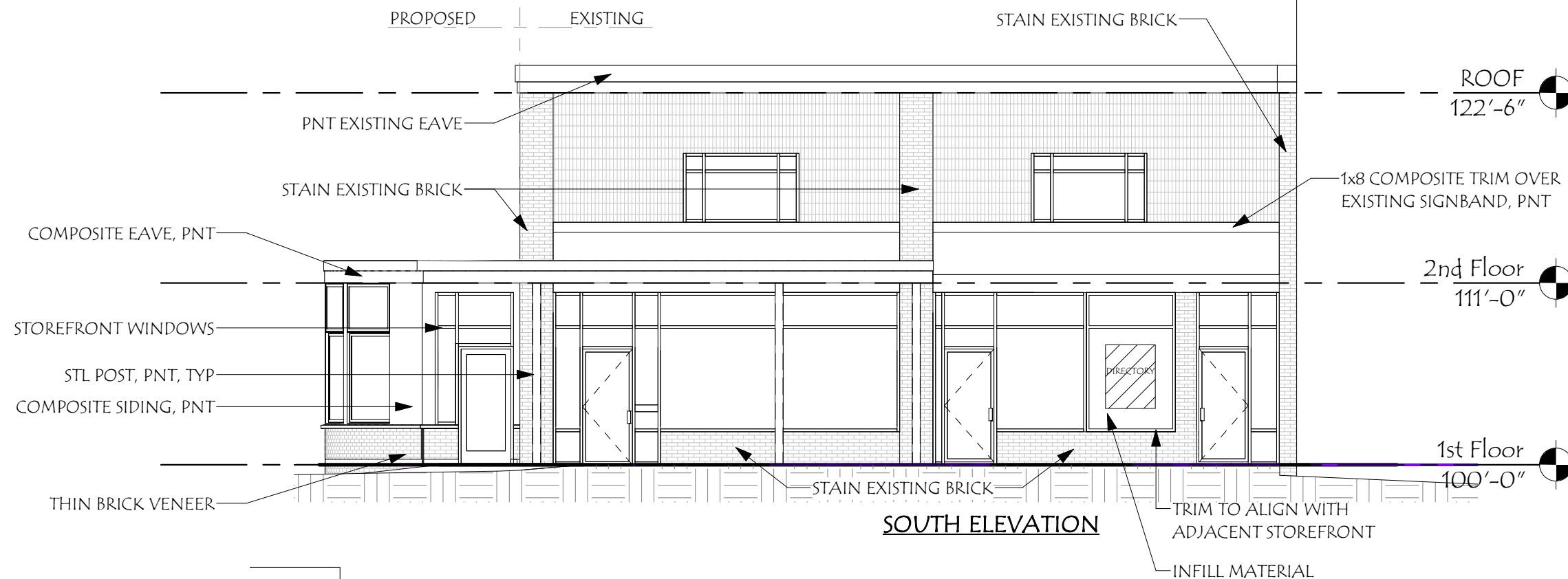
147 CONGRESS

147 Congress St
 Portsmouth, NH 03801

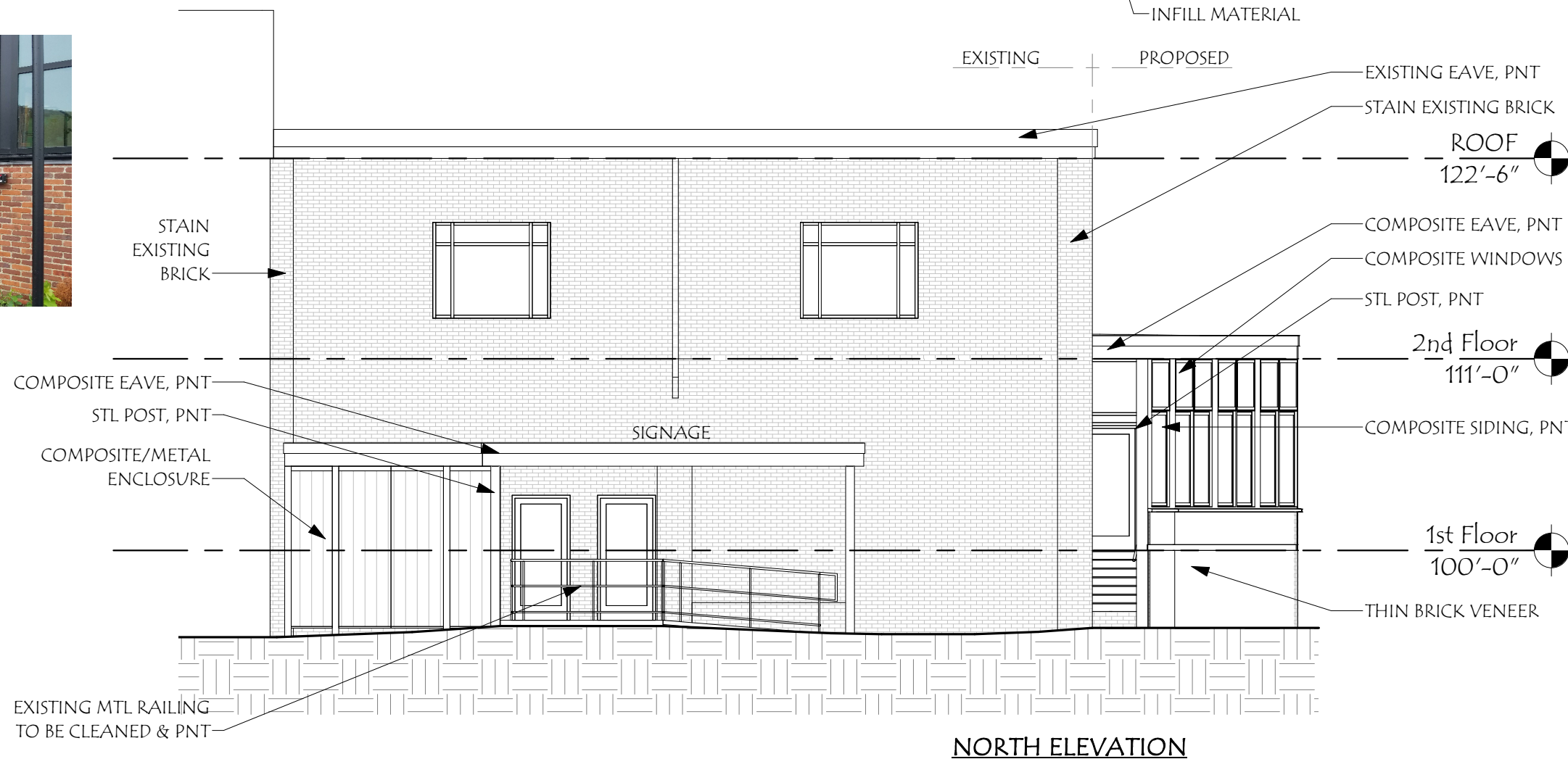
Revisions:	Date
# Description	

SCALE: 3/32" = 1'-0"	DRAWN BY: SNH	CHECKED BY: RJH	PROJECT NO.: 202209	DATE: 10/05/22
----------------------	---------------	-----------------	---------------------	----------------

TITLE: PROPOSED ELEVATIONS	12
----------------------------	----



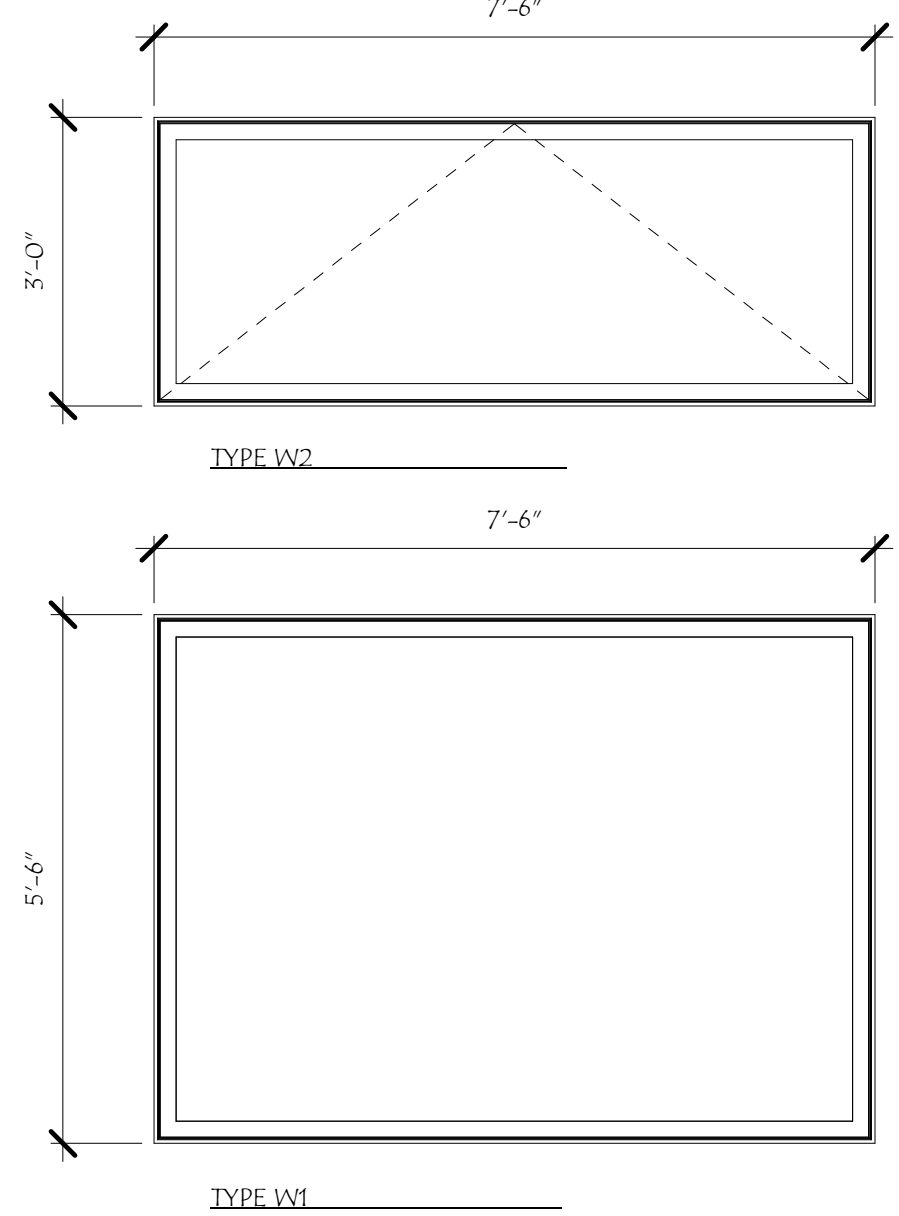
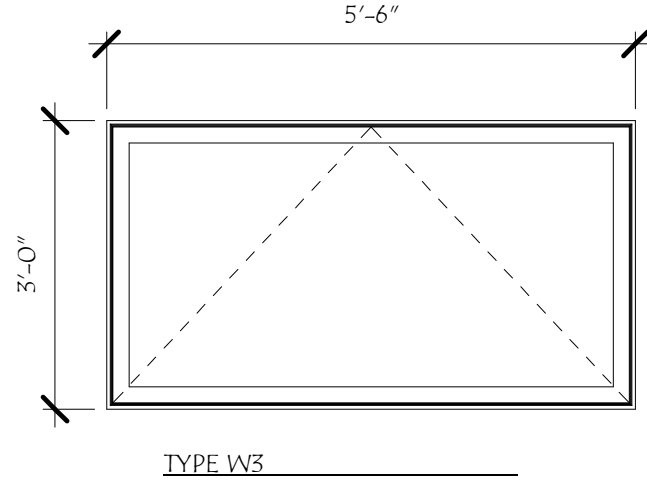
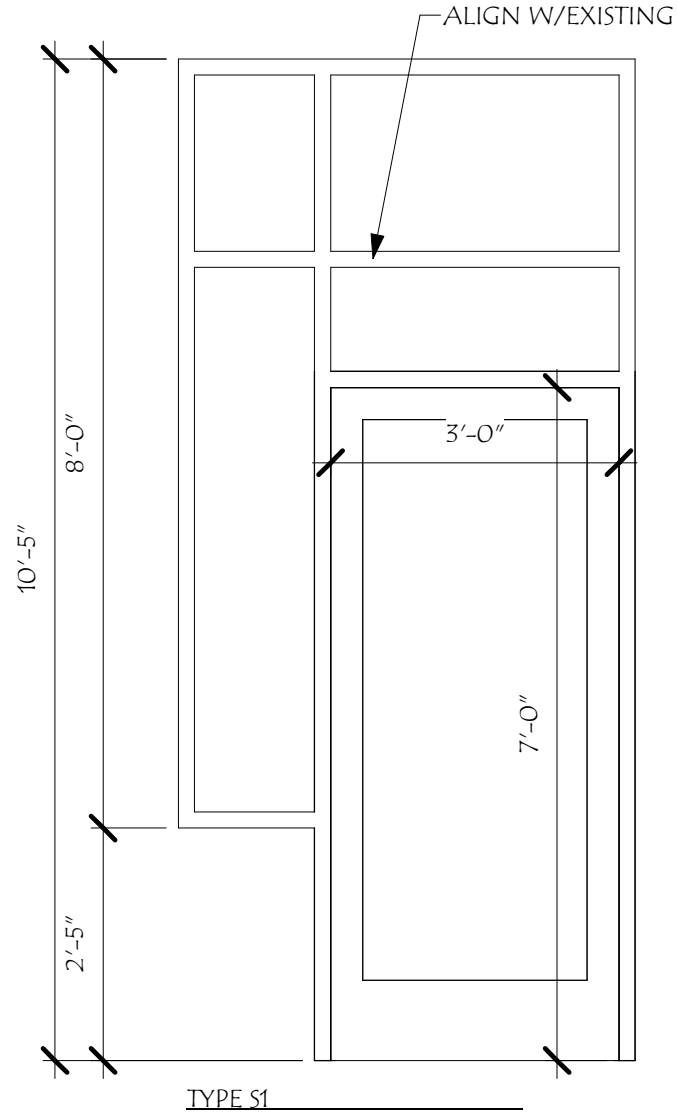
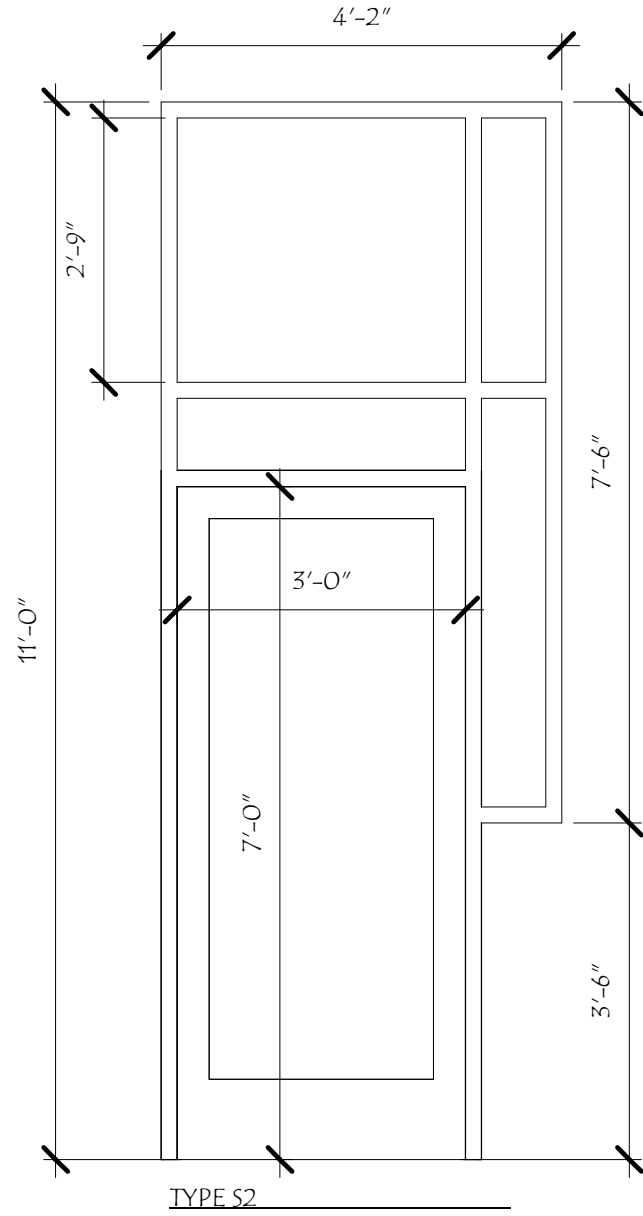
ENCLOSURE INSPIRATION



Revisions #	Description	Date

SCALE: 1/8" = 1'-0"	DRAWN BY: SNH	CHECKED BY: RJH	PROJECT NO.: 202209	DATE: 10/05/22
---------------------	---------------	-----------------	---------------------	----------------

TITLE: PROPOSED ELEVATIONS	13
----------------------------	----



TITLE:
FENESTRATION

SCALE: 1/2" = 1'-0"
DRAWN BY: SNH
CHECKED BY: RJH
PROJECT NO.: 202209
DATE: 10/05/22

Revisions: #	Description	Date

147 CONGRESS

147 Congress St
Portsmouth, NH 03801

HISTORIC
DISTRICT
COMMISSION
WORKSESSION/
PUBLIC HEARING
OCTOBER 2022



MARVIN SIGNATURE® COLLECTION

Our High-Density Fiberglass material and proprietary frame design provide unparalleled thermal performance and durability. The Integrated Mull Channel, a structural cavity within the frame, allows you to add up to 1/2" of mull reinforcement without compromising sightlines. Frame recesses accept a drywall return, allowing for an easier wall integration and consistent frame reveal.

- A. Proprietary frame design helps keep interior temperatures comfortable
- B. The frame's integrated mull channel preserves sightlines and supports structural performance
- C. Built-in drywall return for easy wall integration



Mull

Decorative Glass

The Modern product line is designed to work together visually as a modular system with consistent profiles and narrow sightlines less than 3 inches even on units that are mull together.

Selected: Mull



Gray Tint

GLASS: LOW E3 WITH GRAY TINT

Selected: Gray Tint



EXTERIOR COLOR

Selected: Ebony



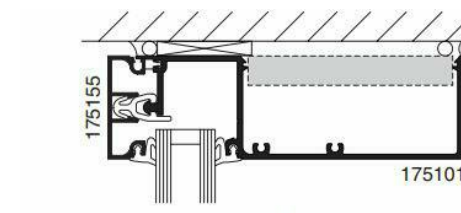
OR ARCHITECT APPROVED EQUAL

Taking center stage in Kawneer's lineup, the EnCORE™ Framing System is a two-piece face-and-gutter system that offers thermal economy, a structural silicone glazed (SSG) option and numerous design choices. Engineered for easy installation and lower costs, features include the unique QuickSeal™ self-sealing system, a broad selection of system depths and a 1-3/4" (44.5 mm) minimal sightline. The EnCORE™ Framing System readily adapts to remodel projects and new construction, whether traditional or modern architecture.

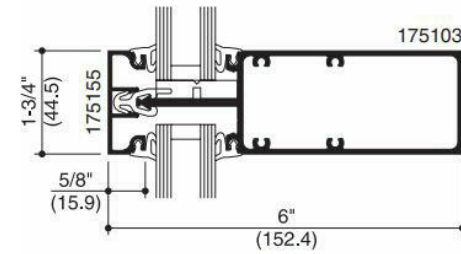
ECONOMY

EnCORE™ is a QuickSeal™ dry-glazed self-sealing framing system and is the first to eliminate joint sealant at horizontal joints, making it more cost effective. The vertical gasket runs through, and when "pinched" by the head, sill and intermediate horizontals, a watertight seal is created, eliminating the need for sealant.

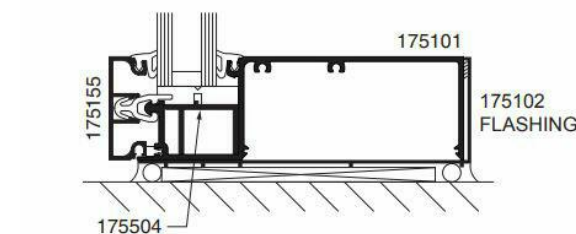
By using the same extrusions for horizontal and vertical mullions, metal utilization is maximized. In addition, the tongue on the extrusions eliminates the need for a secondary, continuous water deflector, thus economizing on installation costs and time.



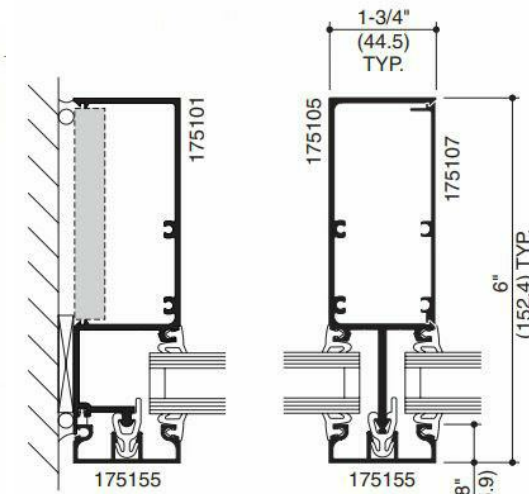
1 HEAD



2 HORIZONTAL

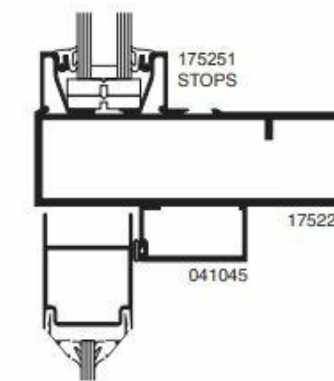


3 SILL



4 JAMB

5 SPLIT MULLION



2 S/A OFFSET ARM
OFFSET PIVOT/
BUTT HUNG
TRANSOM BAR



HISTORIC DISTRICT COMMISSION WORKSESSION/PUBLIC HEARING OCTOBER 2022

147 CONGRESS

147 Congress St
Portsmouth, NH 03801

Revisions #	Description	Date

SCALE:	Author
DRAWN BY:	Checker
CHECKED BY:	202209
PROJECT NO.:	10/05/22
DATE:	9/22/2022 4:21:57 PM

TITLE:	PRODUCT SHEET
	15

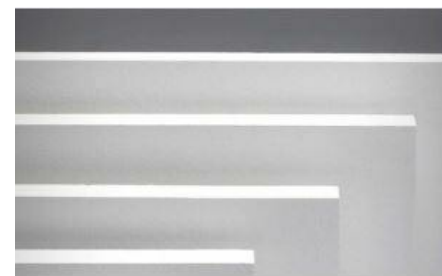


**HARDIE® PANEL VERTICAL SIDING
SMOOTH**

You can't go wrong with this sleek, modern siding. Find the perfect color in our Statement Collection products or Dream Collection products. Or get it primed for paint.

AVAILABLE SIZES

THICKNESS: 0.312"	LENGTH: 120"
	WIDTHS: 48"



**HARDIE® TRIM BOARDS
4/4 SMOOTH**

This trim's simplicity never goes out of style. In a color from our Statement Collection products or Dream Collection products, it has even more staying power. Also available primed for paint.

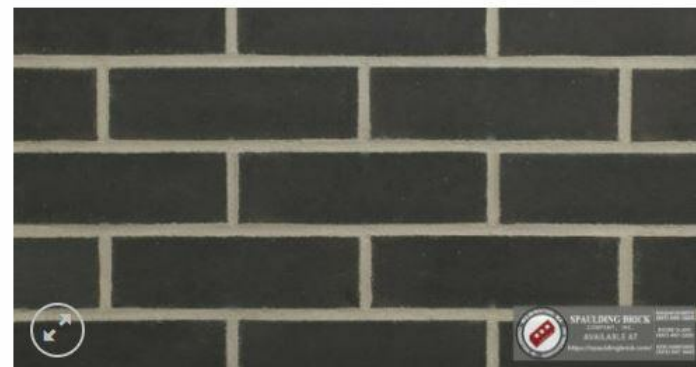
AVAILABLE SIZES

THICKNESS:	0.75"
LENGTH:	144" boards
WIDTHS:	3.5" 5.5"
	7.25" 9.25"
	11.25"



**SPAULDING BRICK
COMPANY, INC.**
an employee owned company

OR ARCHITECT
APPROVED EQUAL



**BRICK MATERIAL- FINAL SELECTION TO
MATCH STAINED EXISTING BRICK**



TECHNICAL DATA SHEET

KEIM RESTAURO® STAIN OR ARCHITECT APPROVED EQUAL
SOL-SILICATE PIGMENTED MINERAL STAIN AND GLAZE

PRODUCT DESCRIPTION

Sol-silicate based, non-film forming mineral stain provides a penetrating, low pigment or translucent finish when diluted with RESTAURO Dilution/Thinner. The original look and feel of natural or precast stone and masonry or brick are not filled-in or altered by RESTAURO, except for color tone. It may be used as a solid-color finish (undiluted) or as a transparent stain/glaze when mixed with dilution/thinner. Pigment and opacity level is the result of how much dilution (clear) is added. Stains ranging from mostly opaque to almost clear are possible. It has water repellent properties and fulfills the requirements of DIN 18363 sect. 2.4.1.

FIELD OF APPLICATION

RESTAURO Pigmented Mineral Stain is uniquely formulated for use on interior or exterior new or bare, aged brick, mortar, mortar repairs and natural and precast stone. It should not be applied to existing latex or acrylic painted surfaces. It is used to decorate or add color or to visually conceal color variations in new or old masonry and for blending and minimizing the appearance of repairs. It may also be used to provide a stained appearance on entire stone or brick facades.

RESTAURO Stain can also be applied as an opaque thin-layer finish retaining the natural surface texture and providing a protective water and weather resistant finishes.

Water proofing may be further enhanced by a pretreatment with SILAN-100 Silane Penetrating Water Repellent. The application of DESIGN Stain together with SILAN-100 complies with water protection requirements as per DIN EN 1504-2/2.2.

RESTAURO Stain is less weather resistant on horizontal and slightly inclined surfaces.

PRODUCT PROPERTIES

RESTAURO Stain protects masonry from the action of weather and prevents the penetration of atmospheric pollutants. Surface textures are fully retained and never "filled-in". It provides a natural mineral matte finish.

- Sol-silicate penetrates and forms permanent chemical bonds—won't peel or lose adhesion
- Light fast, color will not fade
- Extremely vapor permeable—masonry remains dryer
- Weather and moisture resistant
- Not affected by pollution or acid rain
- Darkens when wet—repairs blend into natural masonry wet or dry

Technical data

Density	1.1—1.3 g/cm³
Weight	10.1 lbs/gal
VOC by ASTM D6886	< 1 g/liter
Vapor Diffusion	sd (H2O) = <0.02 m
Water Absorption Coefficient (DIN EN 1504)	W=0.20 kg/m² h 0.5
Lightfastness of color pigment (Fb-Code acc. to BFS technical bulletin No. 26)	A1 Best in class rating No color change after 4 years
Vapor Permeability (ASTM E96)	75—85 Perms
Flashpoint	Non-Flammable
Alkali Resistance ASTM D1308	Passes
Mildew Resistance ASTM D3273/D3274	Passes
Thermal Expansion	Comparable to the concrete substrate
Gloss at 85°	2.0 Mineral Matte Flat
All test results performed on 2 coats Restauro Stain applied at 425—475 sf/gallon	



KEIM Mineral Coatings of America, Inc.
3935 Perimeter West, Suite 100
Charlotte, NC 28214
keim.com
1-866-906-5346 or 704-588-4811
Email: info@keim.com



**HISTORIC
DISTRIC
COMMISSION
WORKSESSION/
PUBLIC HEARING
OCTOBER 2022**

147 CONGRESS

147 Congress St
Portsmouth, NH 03801

Revisions #	Description	Date

SCALE:	Author
DRAWN BY:	Checker
CHECKED BY:	202209
PROJECT NO.:	10/05/22
DATE:	9/22/2022 4:21:57 PM

TITLE:
PRODUCT SHEET

16