

# DOYLE NAM RESIDENCE

129 STATE STREET, PORTSMOUTH, NH

HISTORIC DISTRICT COMMISSION RENDERINGS OF

Spivak Architects

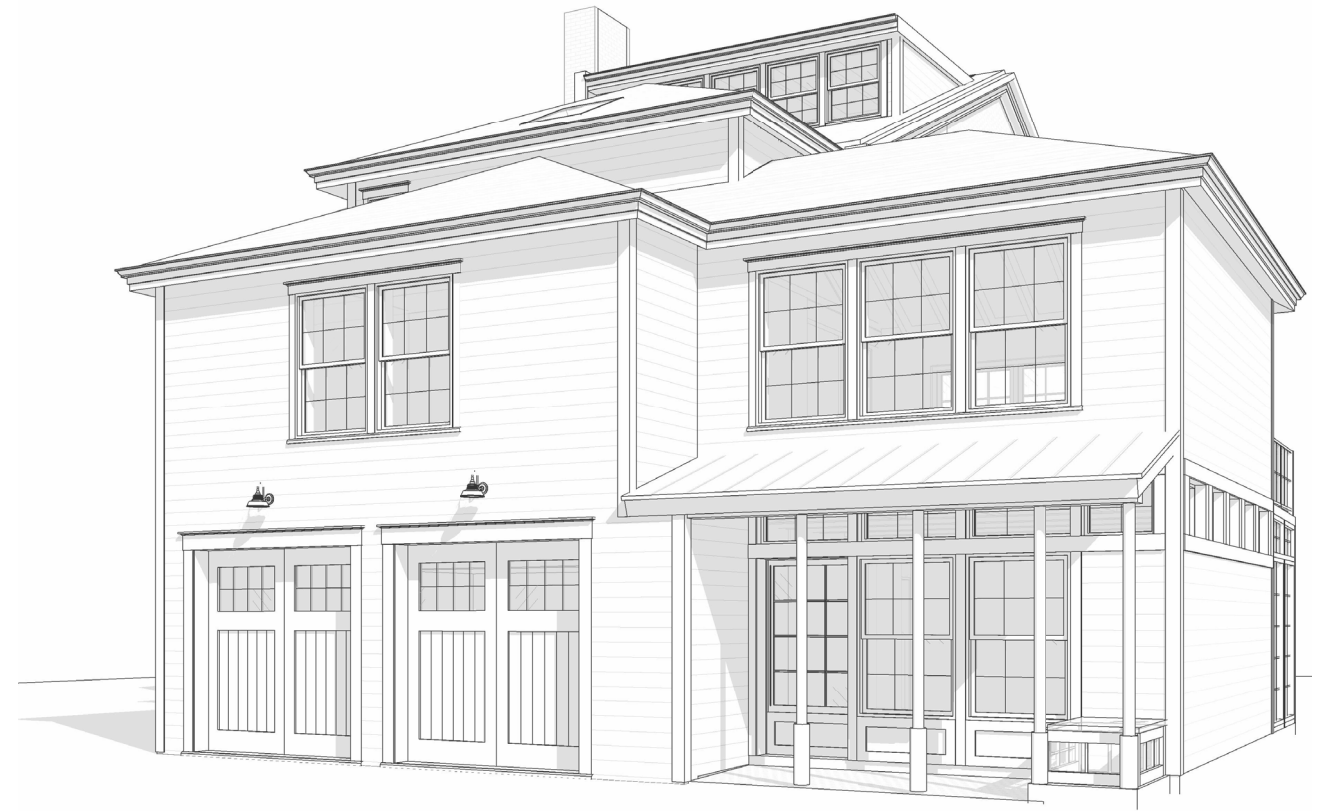


HDC APPROVED 05/04/2022

PROPOSED



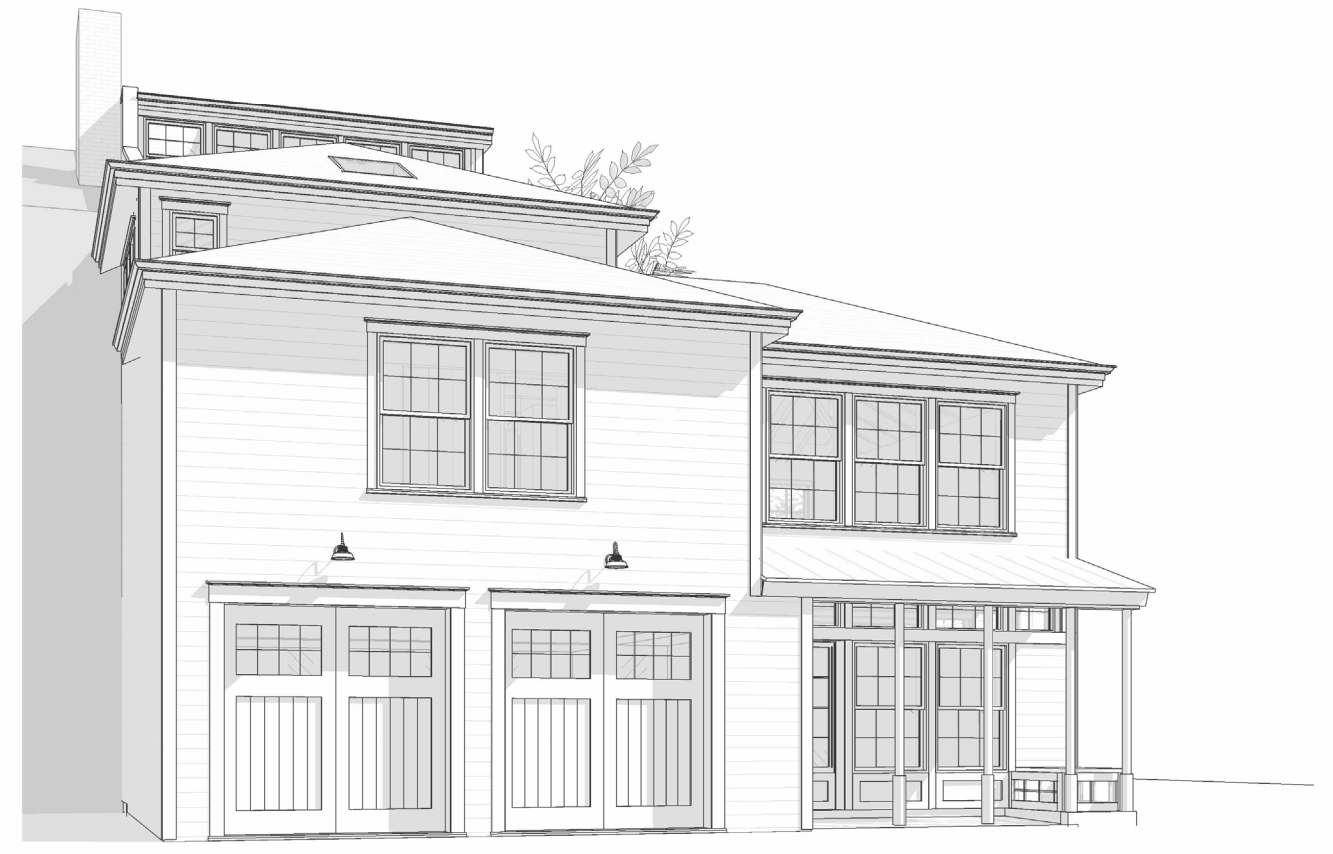
HDC APPROVED 05/04/2022



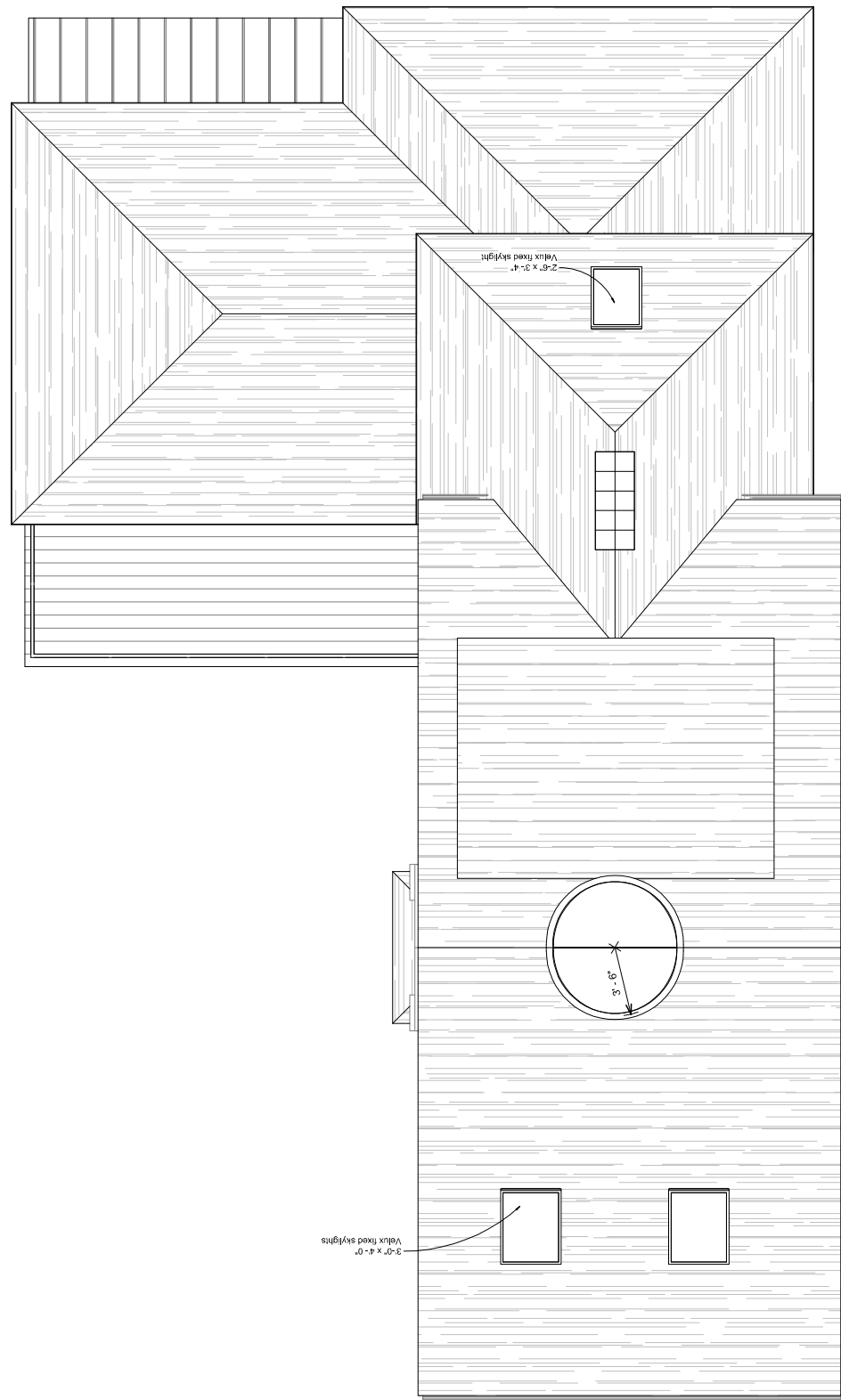
PROPOSED



HDC APPROVED 05/04/2022

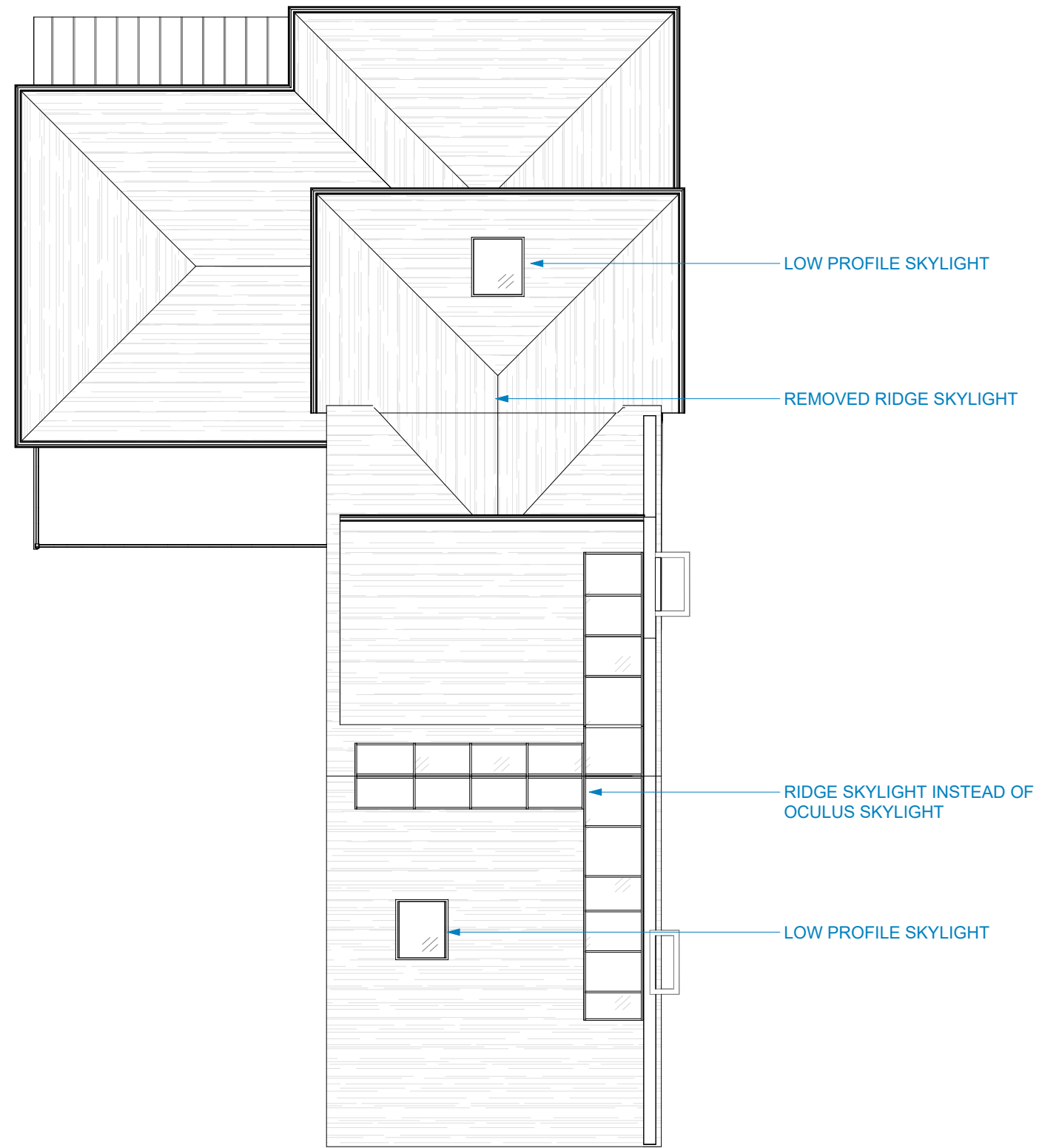


PROPOSED

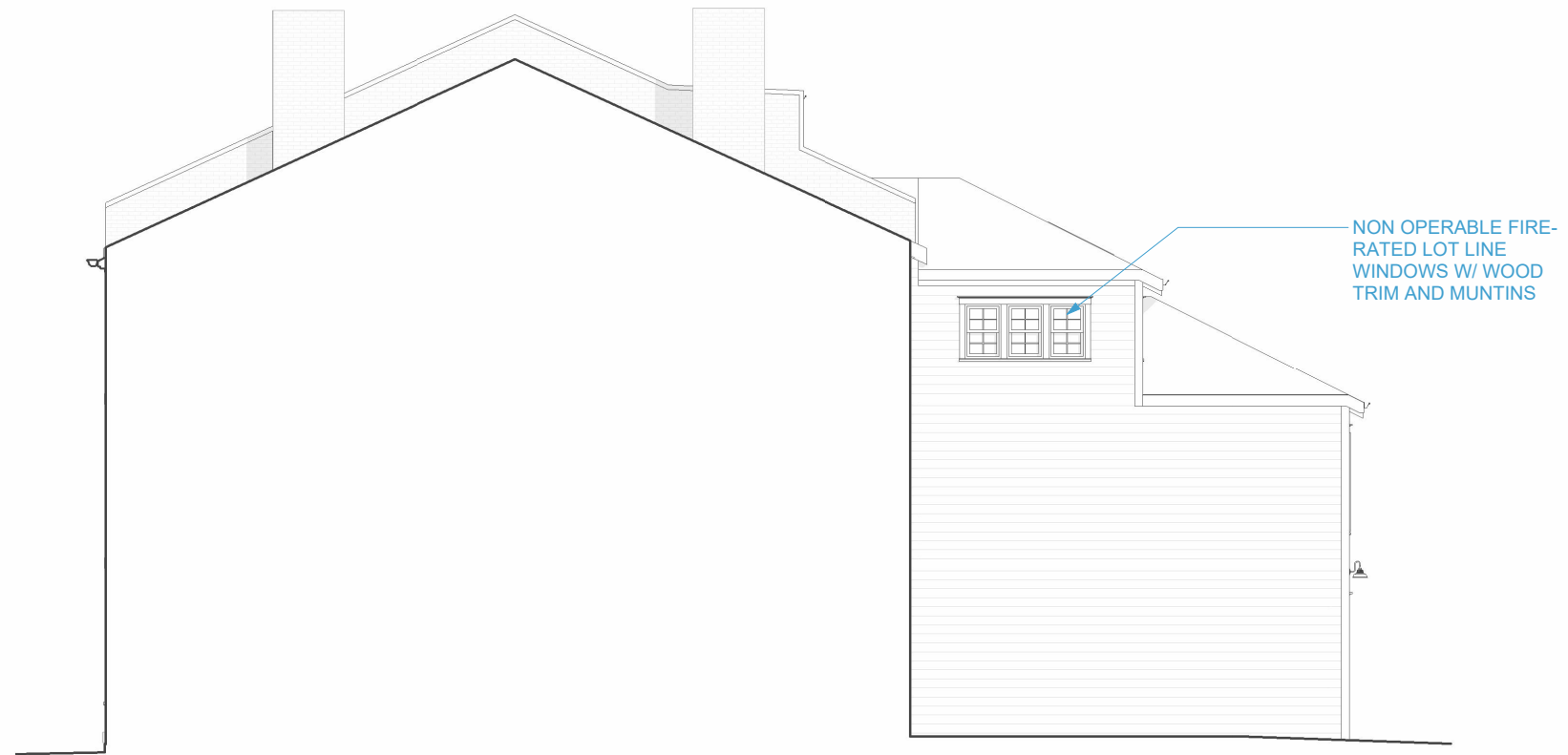


HDC APPROVED 05/04/2022

# ROOF PLAN

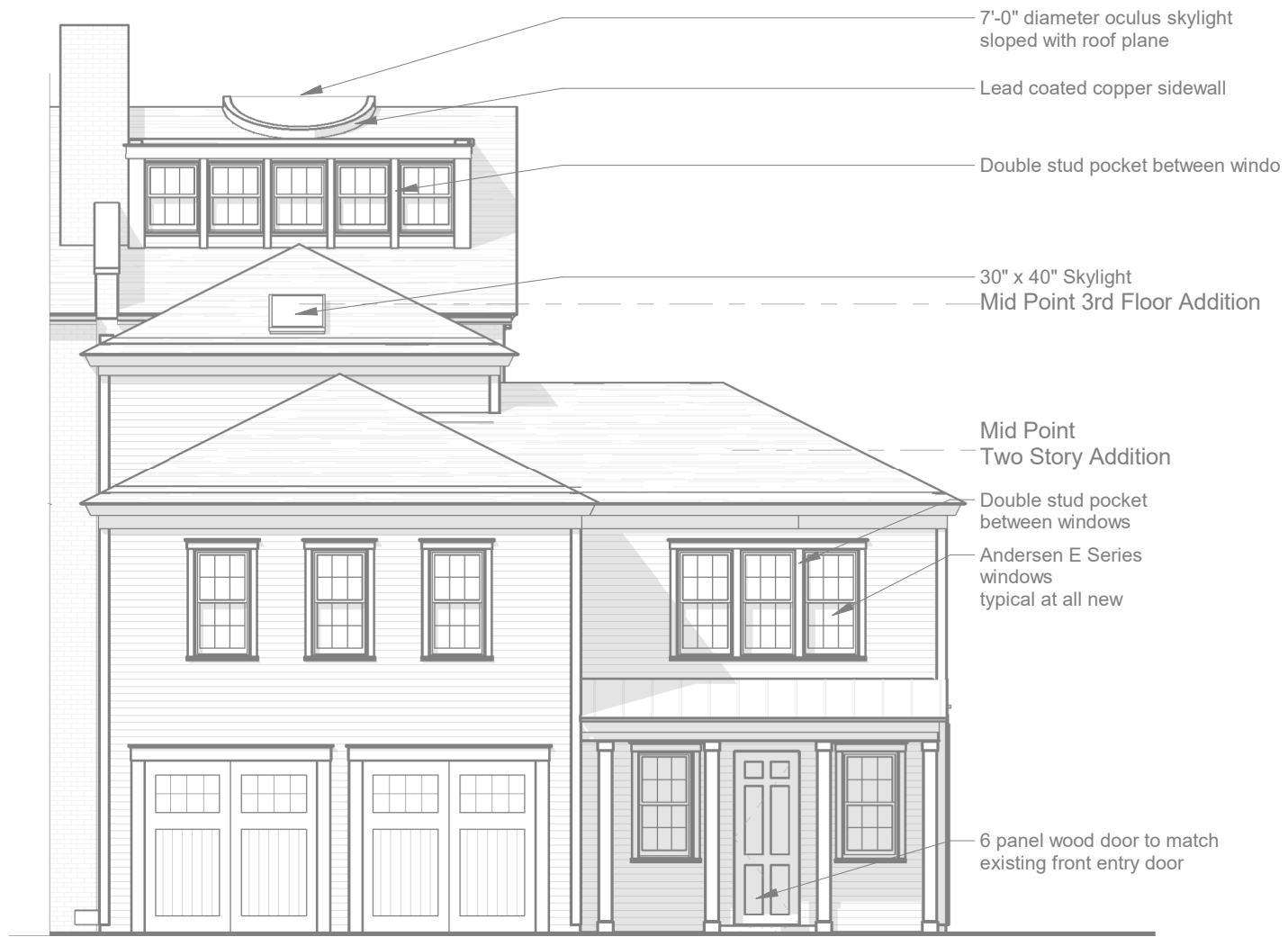


PROPOSED

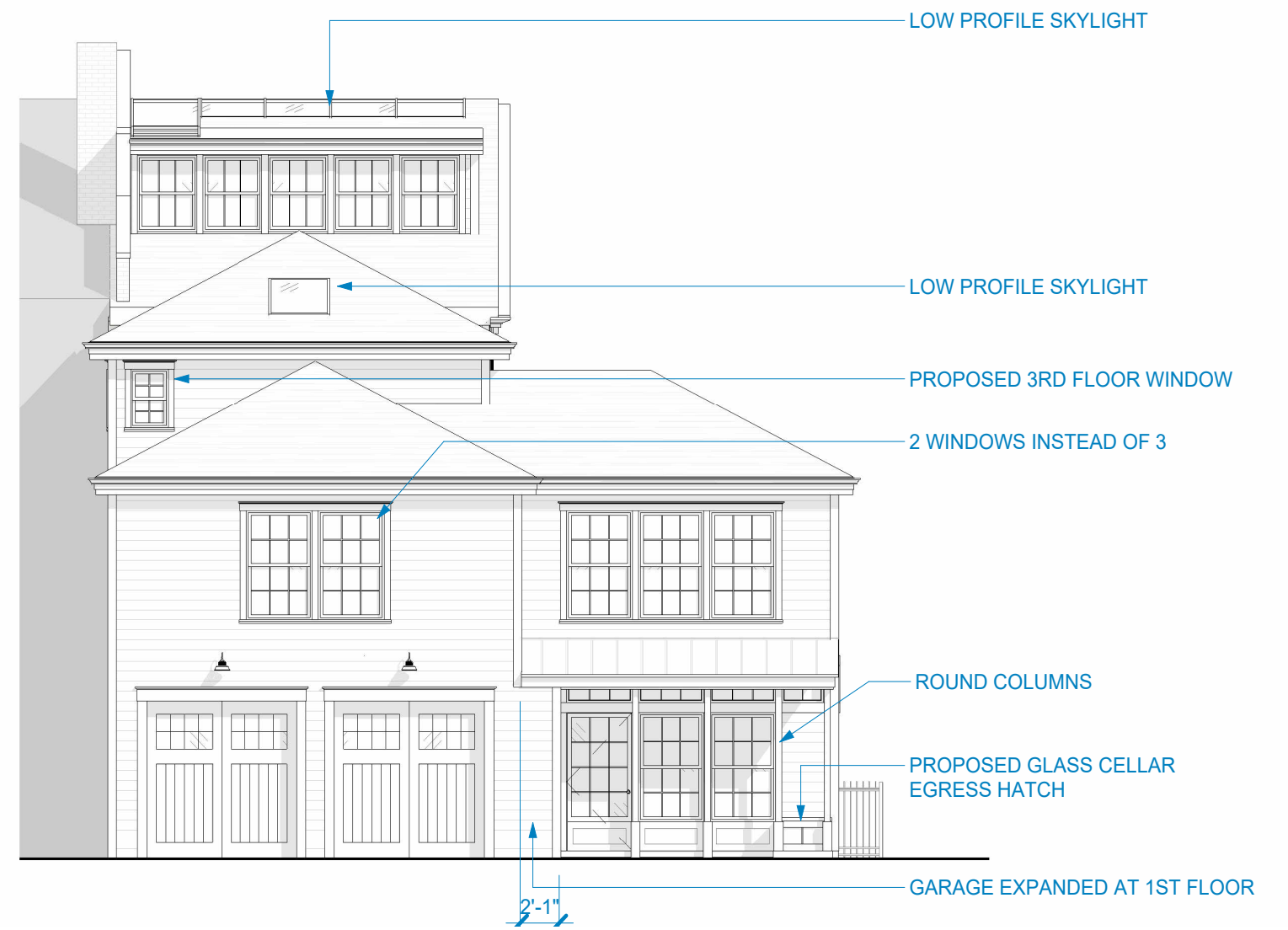


PROPOSED ELEVATION

# EAST ELEVATION



HDC APPROVED 05/04/2022



PROPOSED ELEVATION

# NORTH ELEVATION



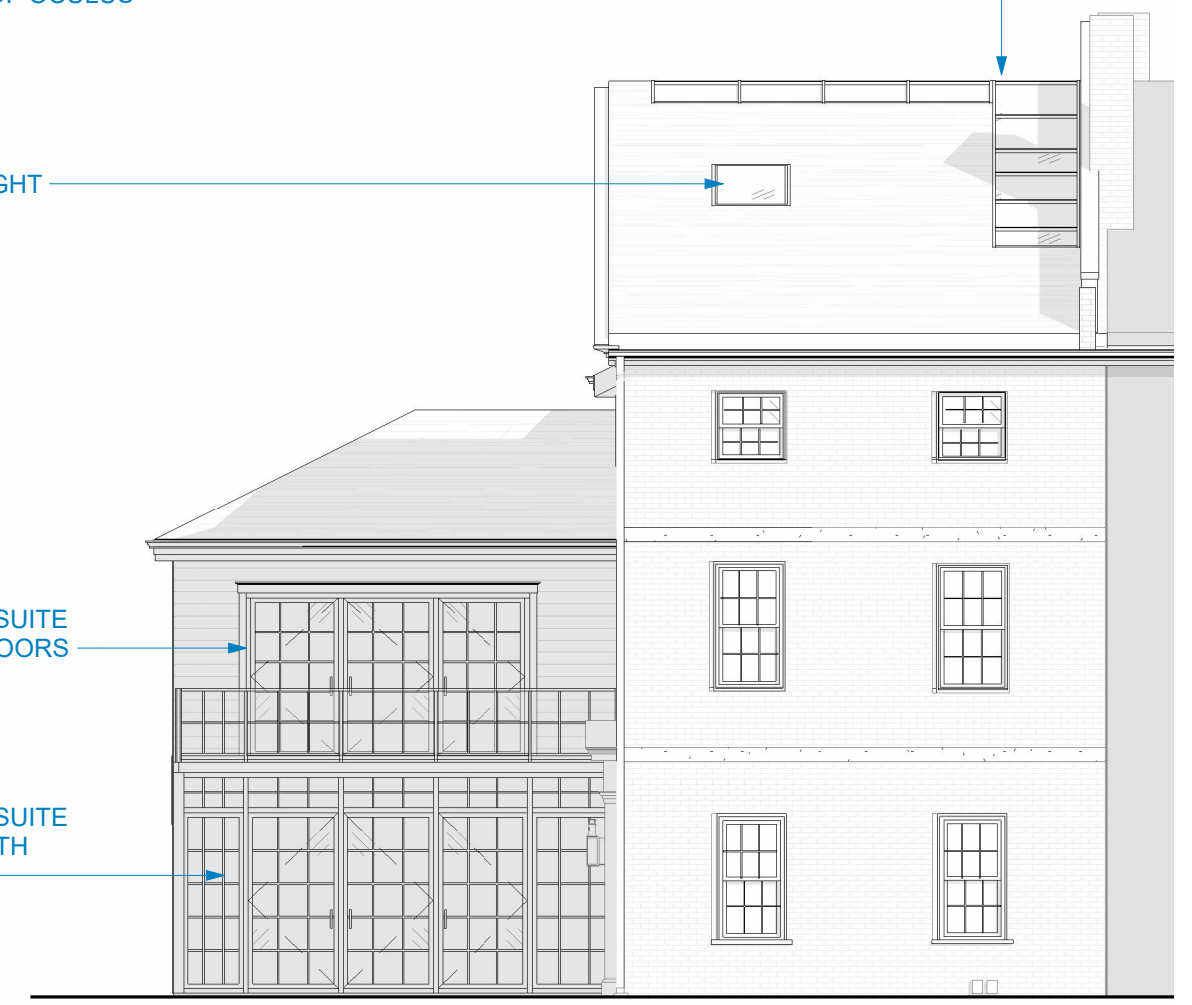
HDC APPROVED 05/04/2022

PROPOSED LOW-PROFILE SKYLIGHT INSTEAD OF OCULUS

LOW PROFILE SKYLIGHT

HOPES OLD WORLD SUITE STEEL AND GLASS DOORS

HOPES OLD WORLD SUITE STEEL SOLARIUM WITH MATCHING RAILING

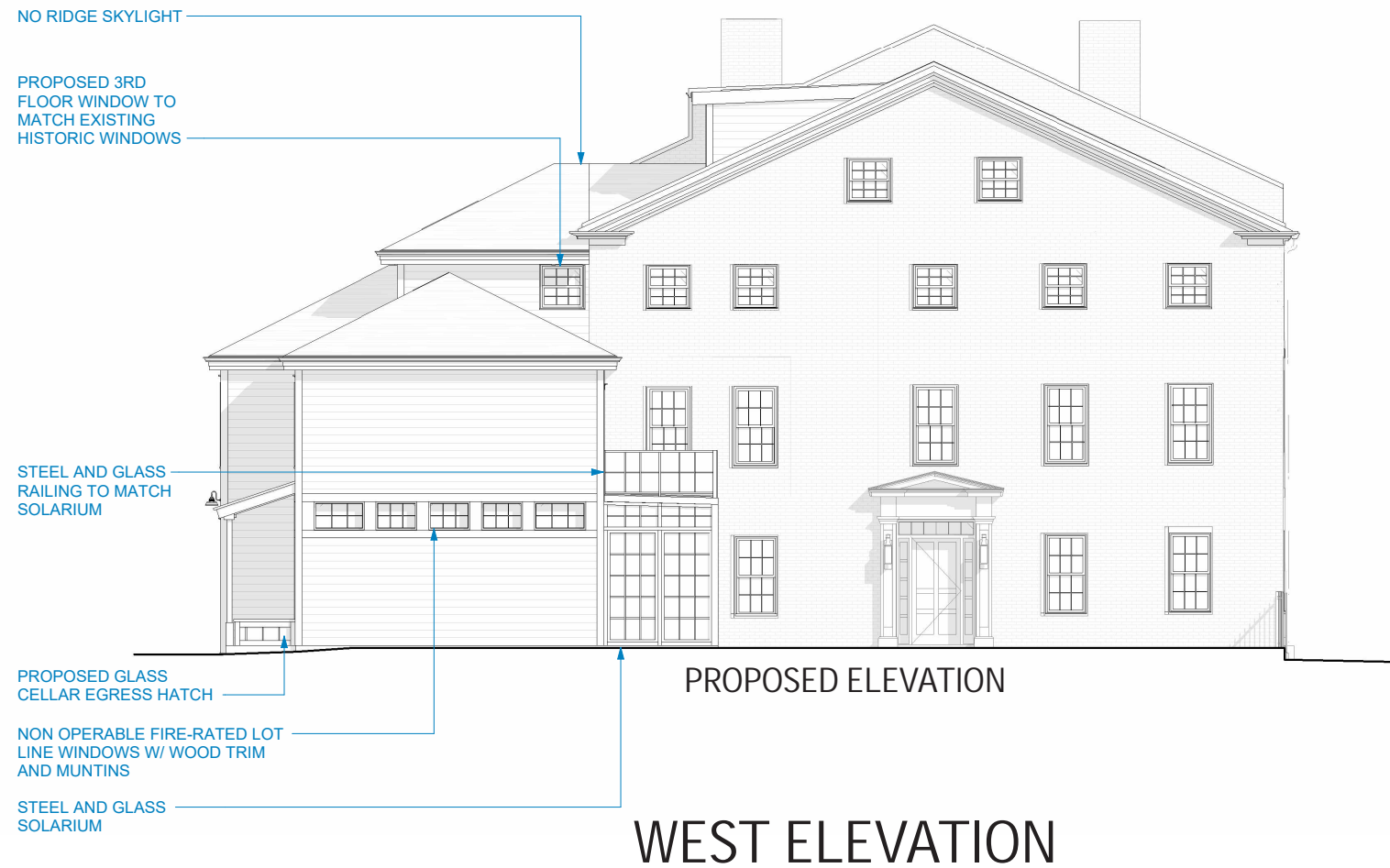


PROPOSED ELEVATION

# SOUTH ELEVATION



HDC APPROVED 05/04/2022





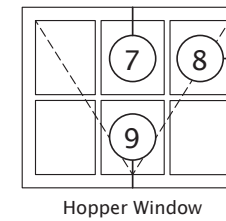
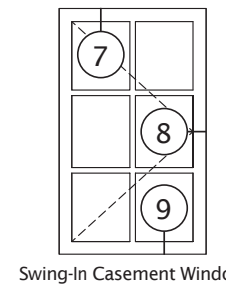
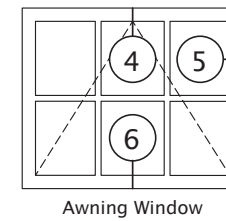
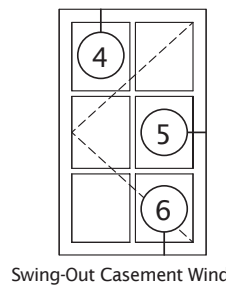
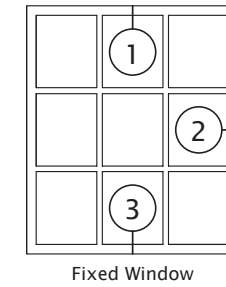
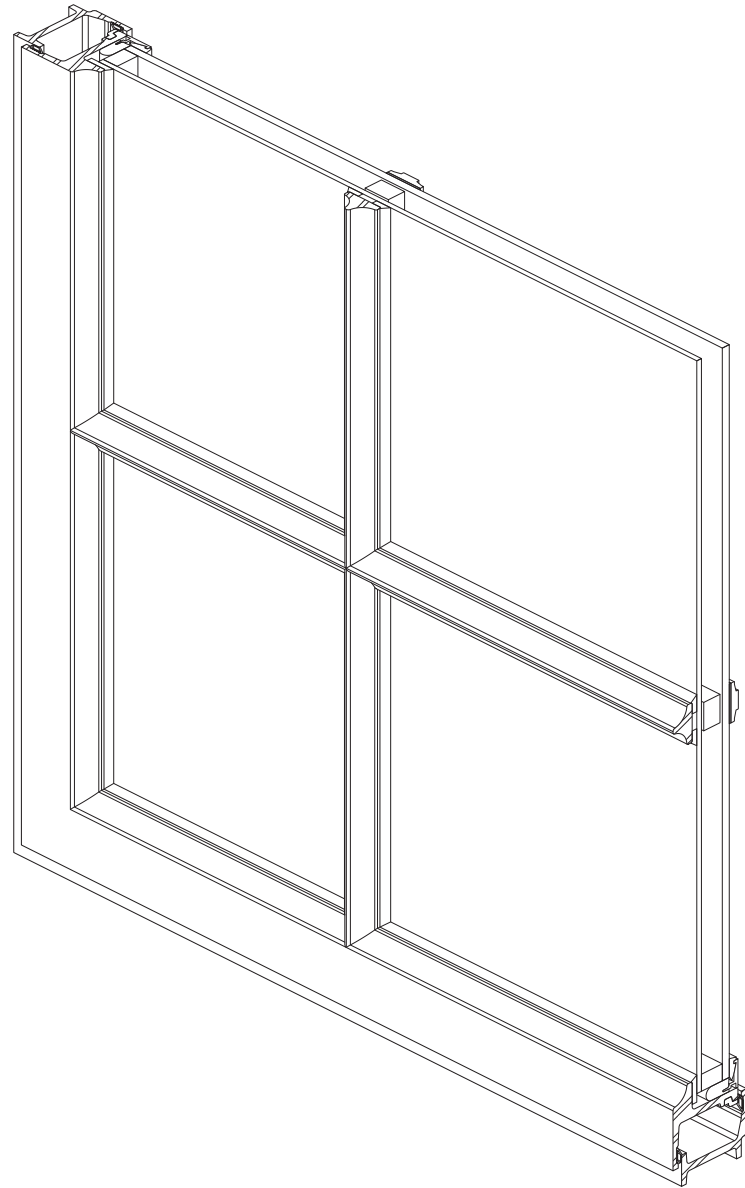


PROPOSED ALTERNATE - NO EAVE OVERHANG

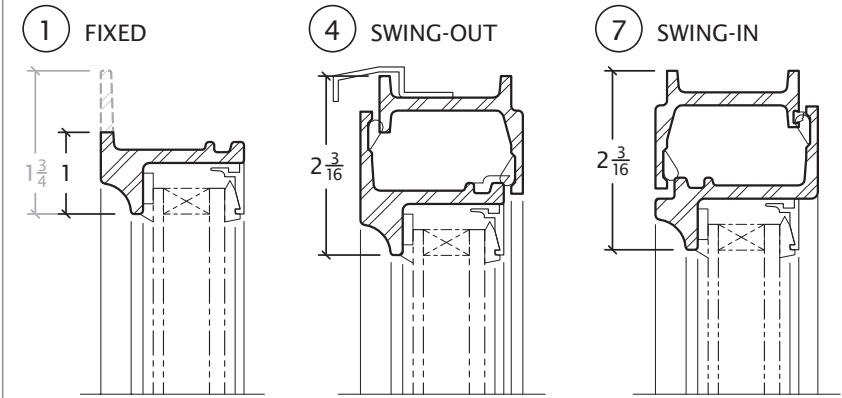
Hope's Old World Suite steel sections are specifically designed for projects calling for classical solid, hot-rolled steel windows with old world style three-point casement, or arrow-shaped, profiles. The fixed and operable configurations can be glazed with monolithic or insulated glass for energy efficiency. The unique window profiles and very narrow sightlines are ideal for new buildings as well as replacement projects.

**PRODUCT FEATURES**

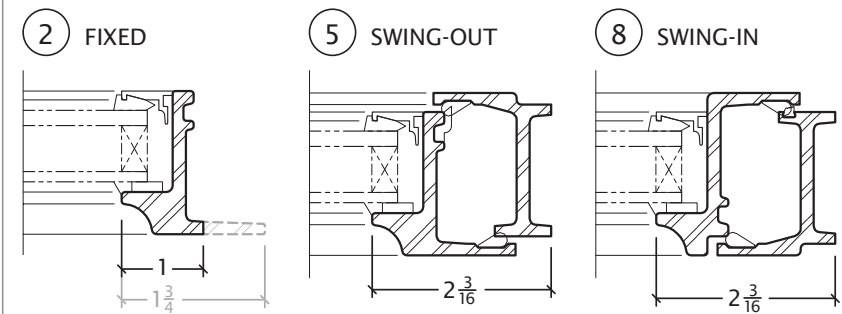
- Historically accurate sightlines and true divided lite or simulated divided lite muntins
- Unsurpassed strength of hot-rolled steel sections
- Accepts up to 7/8" thick insulating glass with simulated divided lites; up to 1/2" thick glass with true divided lites
- ASTM compliance for air infiltration and water penetration
- Hope's Power of 5 Finishing System with hot-dip galvanizing pretreatment
- Available with Hope's Thermal Evolution™ technology



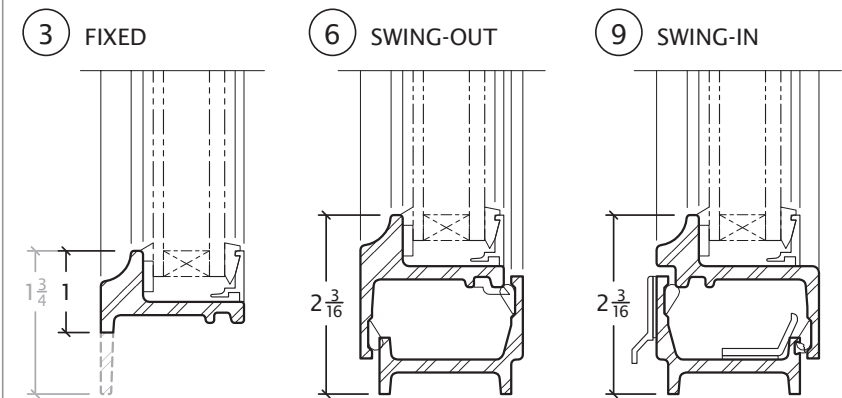
**TYPICAL HEAD DETAILS**




**TYPICAL JAMB DETAILS**



**TYPICAL SILL DETAILS**



Details are half scale and shown inside glazed with 7/8" thick glass.  
Perimeter frame profiles are available in long leg or equal leg configurations.  
All Hope's products are custom manufactured to your specific project requirements.

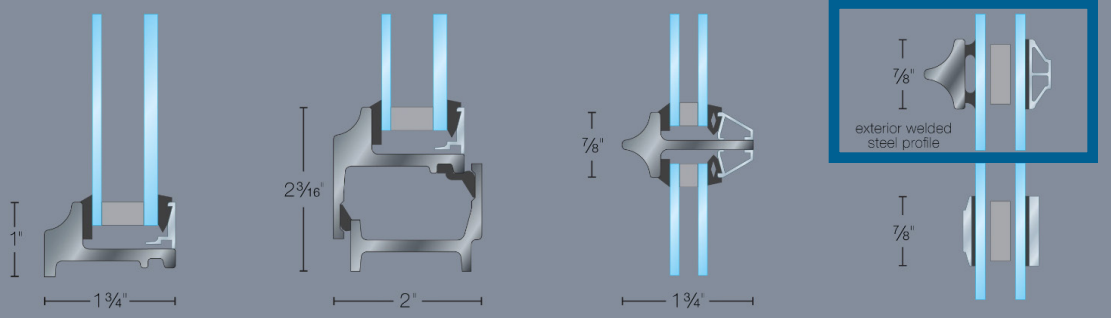



### PRODUCT PERFORMANCE

- Meets or exceeds **air infiltration** test criteria in accordance with ASTM E283
- Meets or exceeds **water penetration** test criteria in accordance with ASTM E331
- Meets or exceeds **structural** test criteria in accordance with ASTM E330
- Meets or exceeds **forced entry** test criteria in accordance with ASTM F588
- Impact-rated product meets or exceeds **missile impact and cyclic pressure** test criteria in accordance with ASTM E1886
- Impact-rated product meets or exceeds **hurricane windborne debris** test criteria in accordance with ASTM E1996

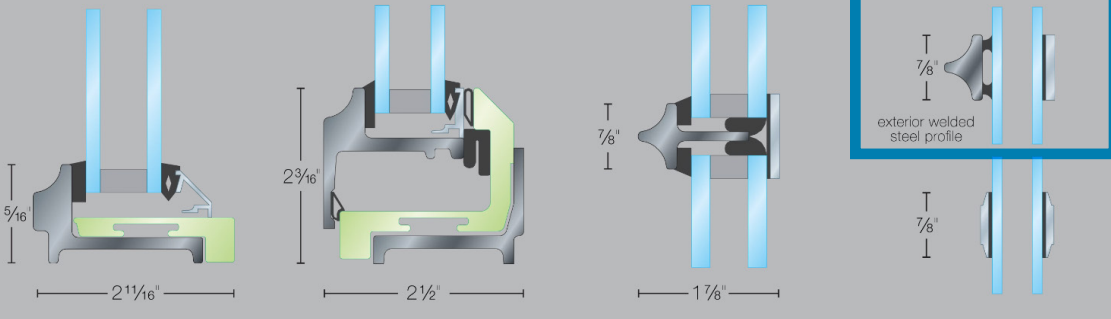
*Consult Hope's to review applicable testing and design performance data for your specific project.*

### STANDARD PROFILES



**FIXED**      **OPERABLE**      **TRUE DIVIDED LITE**      **SIMULATED DIVIDED LITE**

### THERMAL PROFILES



**THERMAL FIXED**      **THERMAL OPERABLE**      **THERMAL TRUE DIVIDED LITE**      **THERMAL SIMULATED DIVIDED LITE**



Photo: Connie Zhou