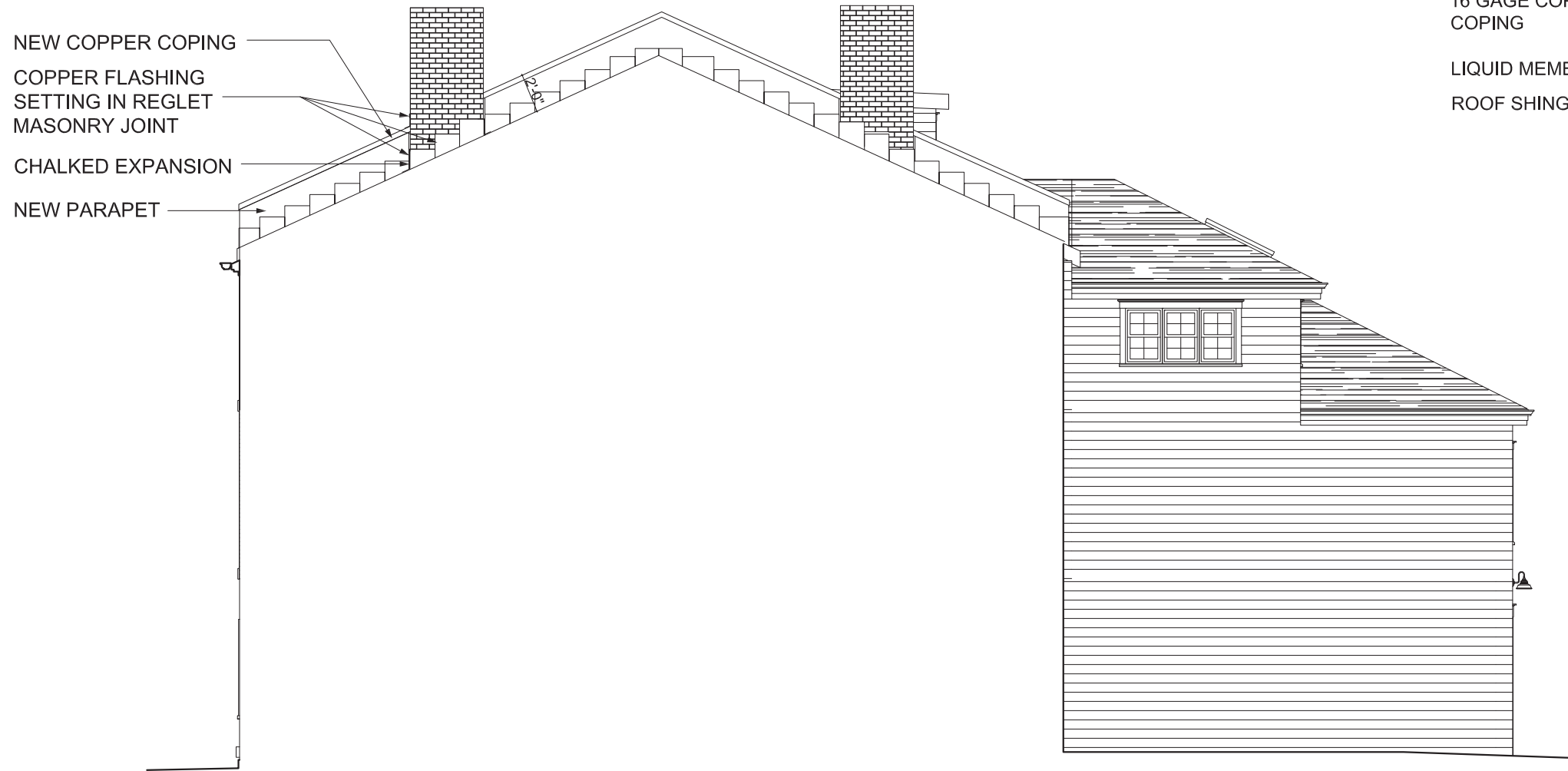


# DOYLE NAM RESIDENCE

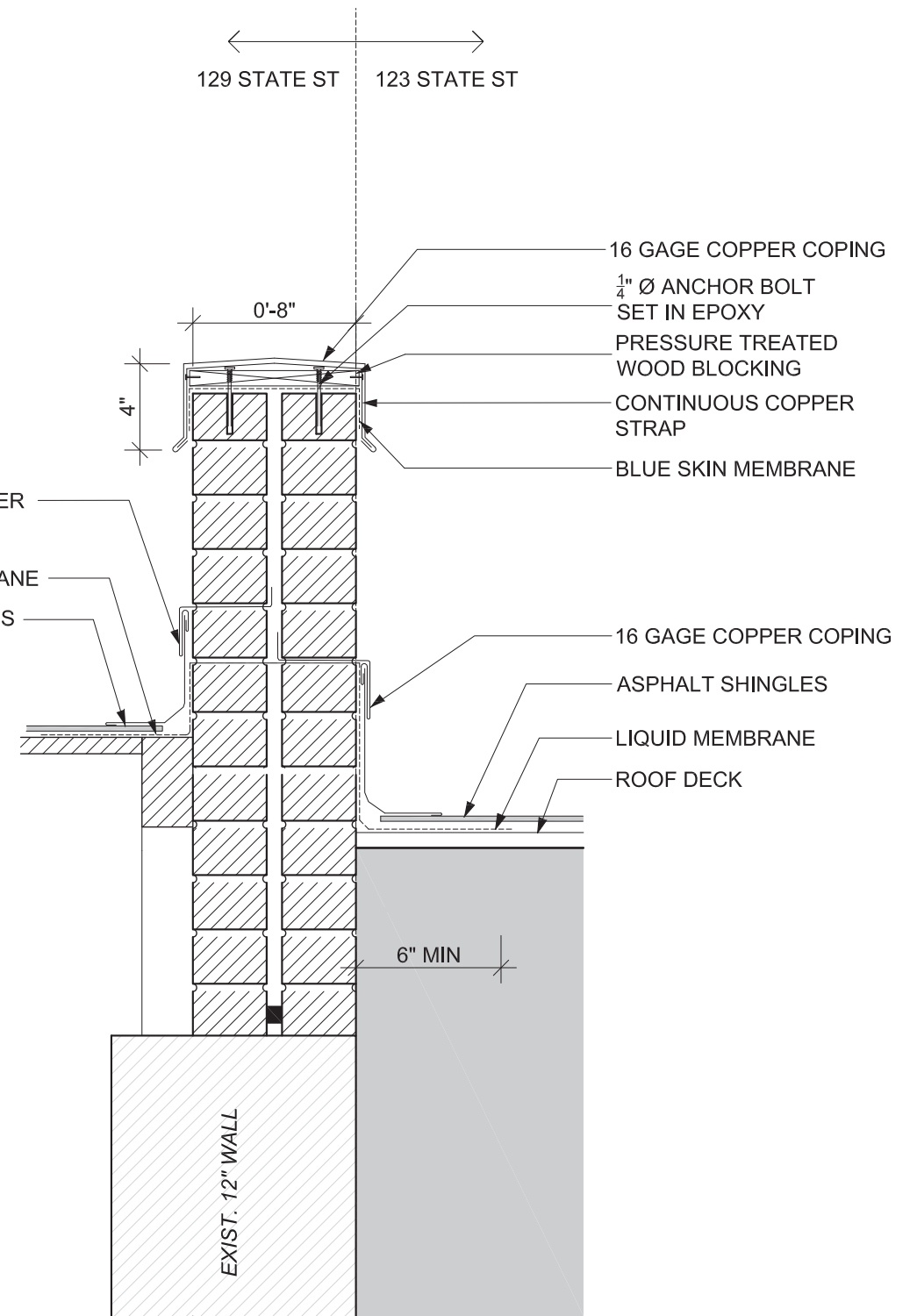
129 STATE STREET, PORTSMOUTH, NH

HISTORIC DISTRICT COMMISSION - ROOF/PARAPET DETAILS 06.15.2023

**Spivak Architects**



EAST ELEVATION - PROPOSED ELEVATION  
SCALE: 1/8" = 1'-00"



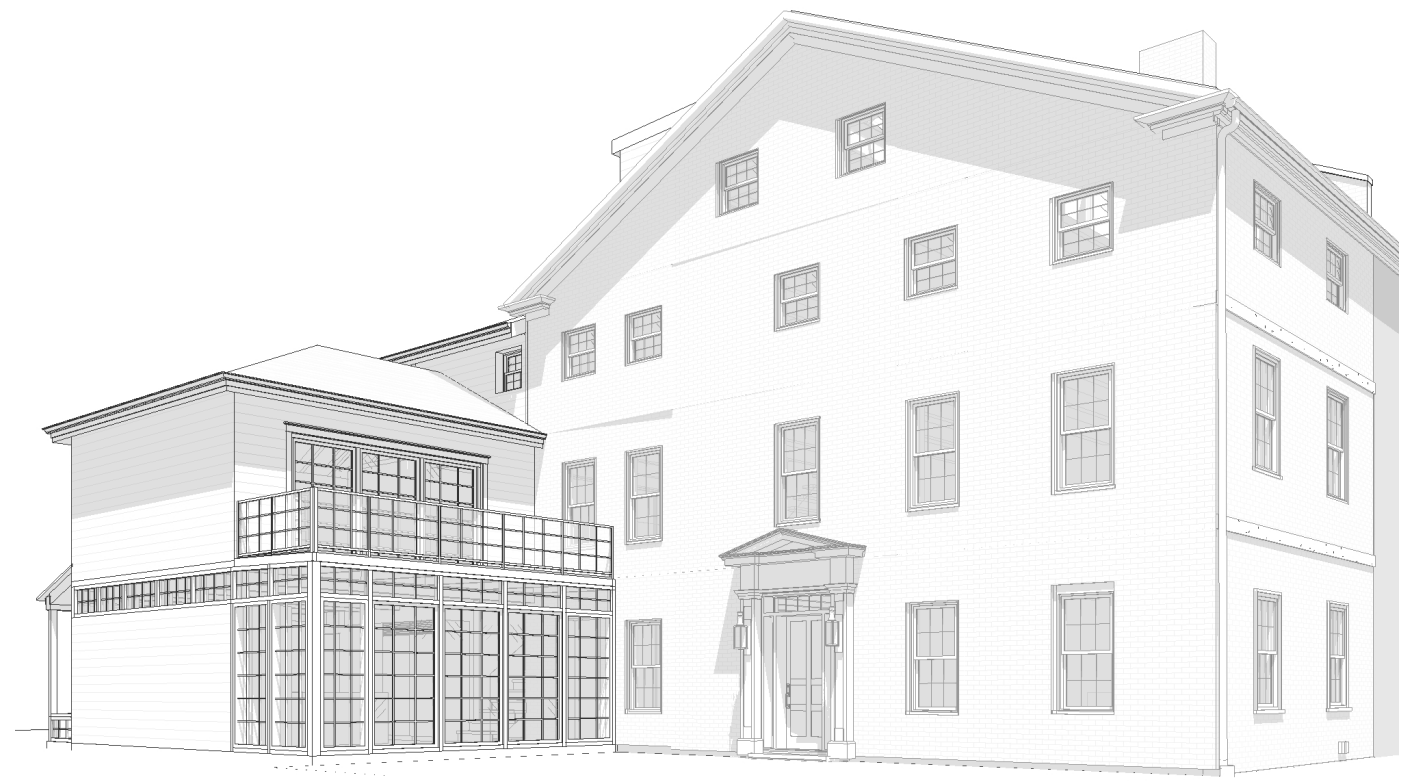
PARAPET DETAIL  
SCALE: 1-1/2" = 1'-00"

# DOYLE NAM RESIDENCE

129 STATE STREET, PORTSMOUTH

HISTORIC DISTRICT COMMISSION RENDERINGS OF

Spivak Architects



HDC APPROVED 05/04/2022

PROPOSED





HDC APPROVED 05/04/2022



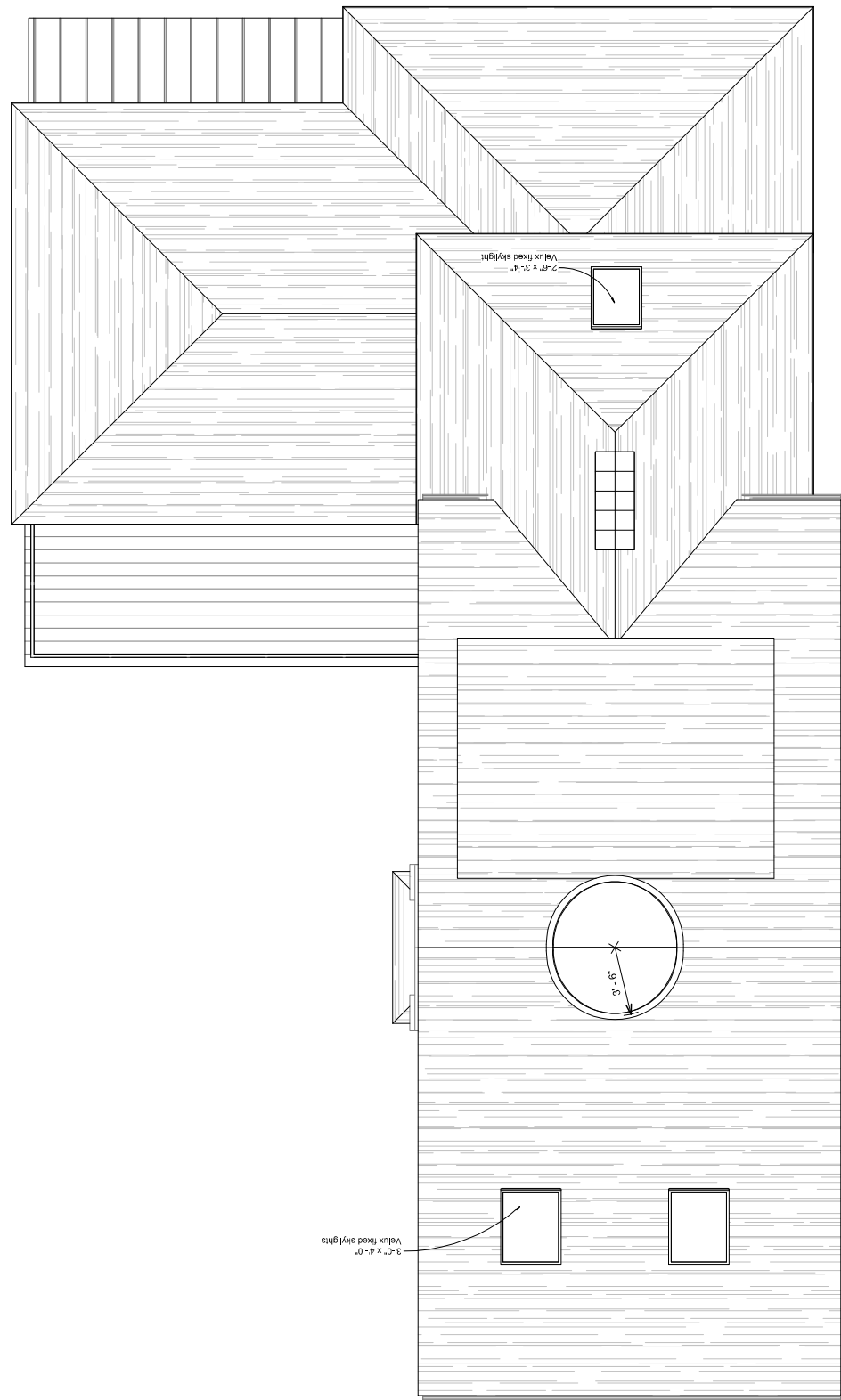
PROPOSED



HDC APPROVED 05/04/2022

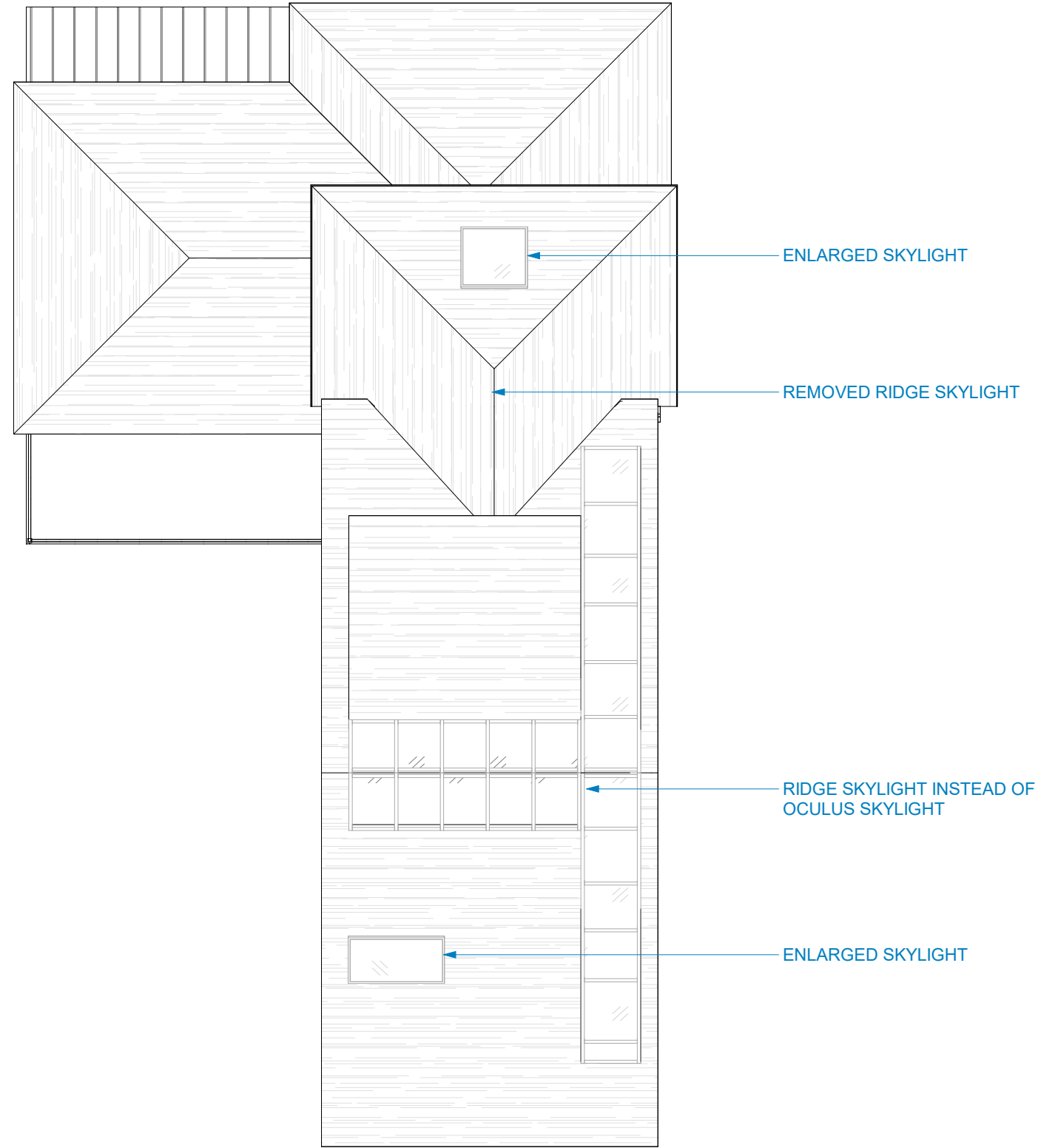


PROPOSED

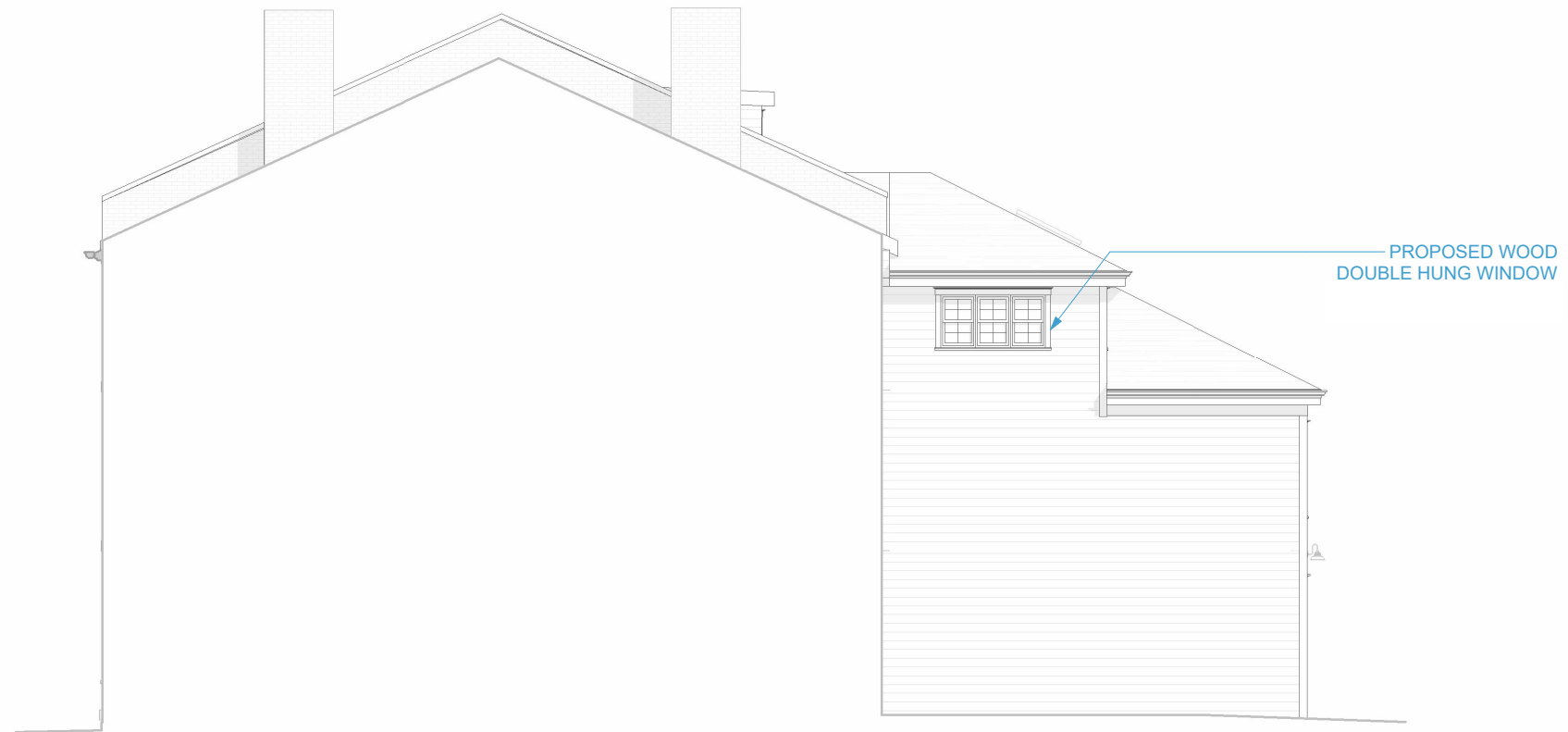


HDC APPROVED 05/04/2022

# ROOF PLAN



PROPOSED

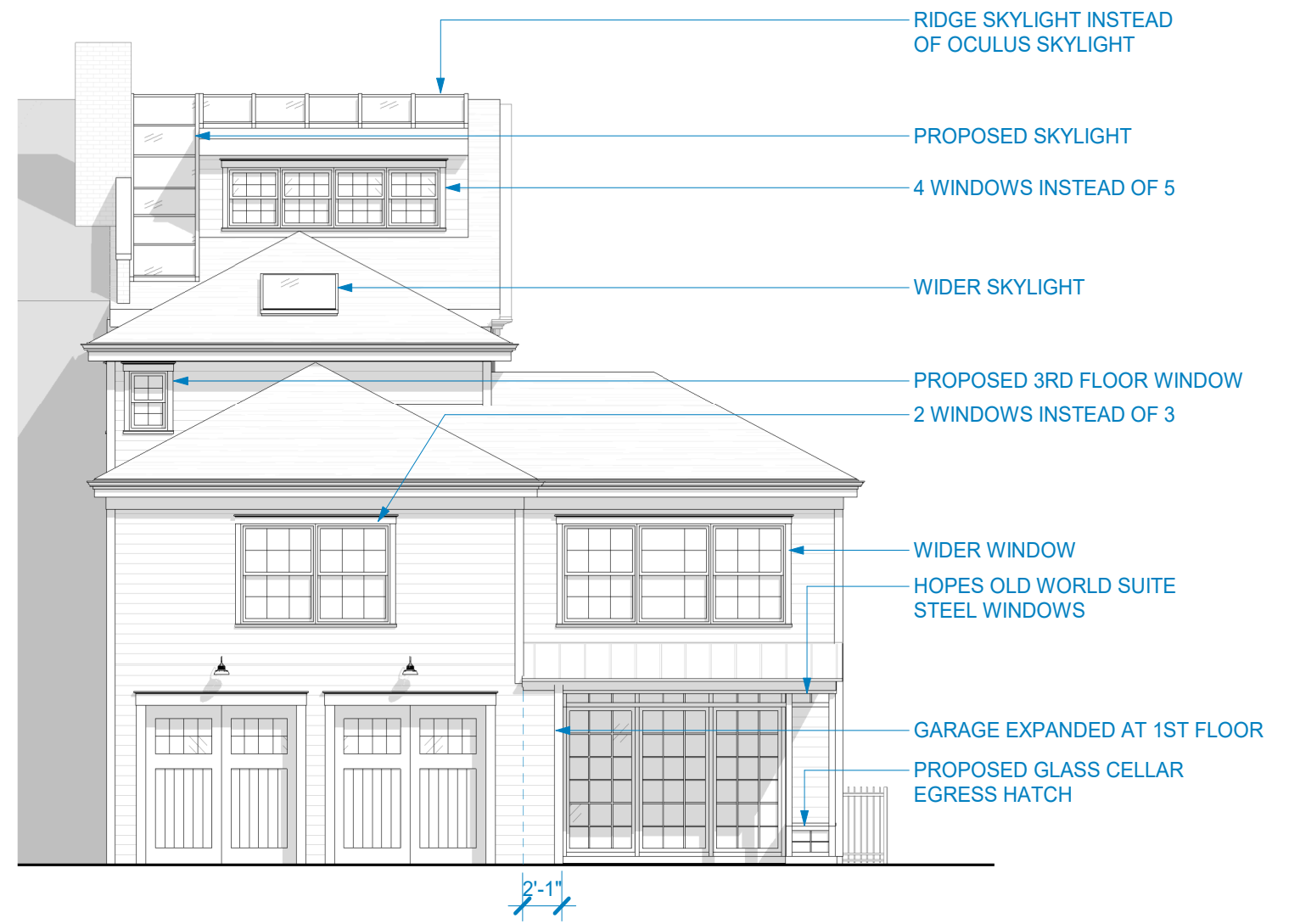


PROPOSED ELEVATION

# EAST ELEVATION



HDC APPROVED 05/04/2022

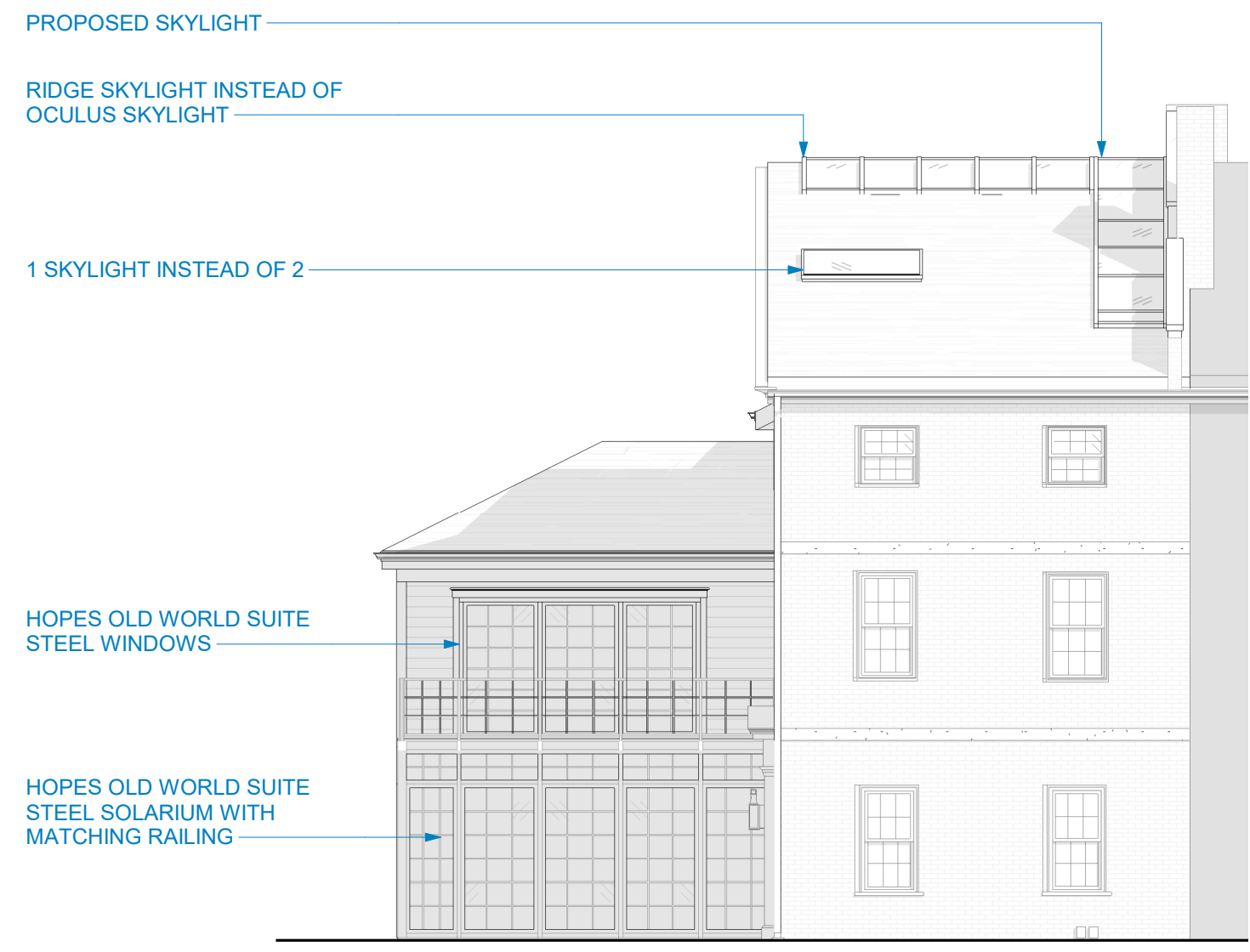


PROPOSED ELEVATION

# NORTH ELEVATION



HDC APPROVED 05/04/2022

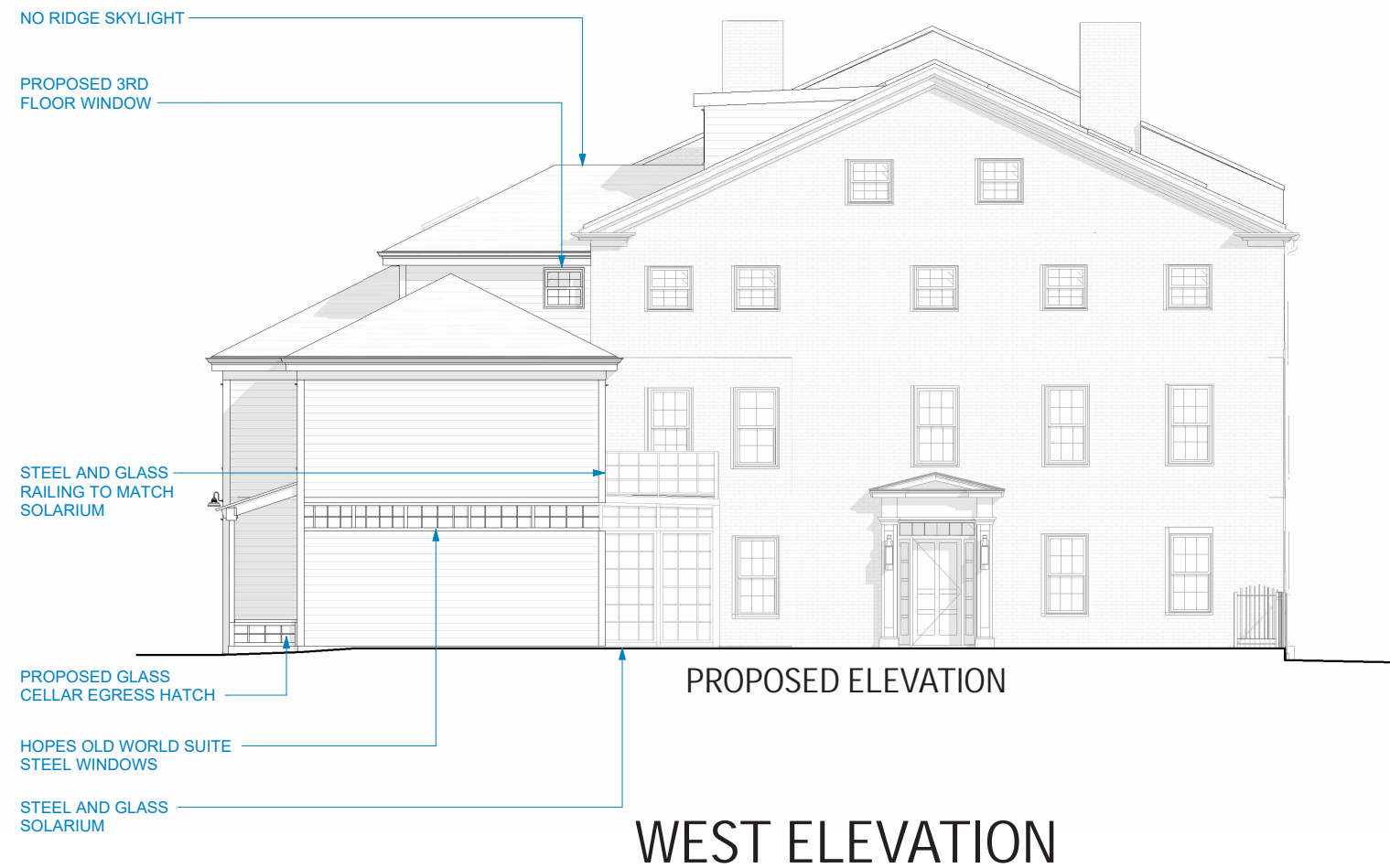


PROPOSED ELEVATION

# SOUTH ELEVATION



HDC APPROVED 05/04/2022







Artistic Rendering - State Street Perspective

HDC APPROVED 05/04/2022



PROPOSED

# VIEW FROM CORNER OF STATE STREET





EXISTING



PROPOSED

## VIEW FROM ACROSS STATE STREET





HDC APPROVED 05/04/2022



PROPOSED

## VIEW FROM SHEAFE STREET



# DOOR & WINDOW SPECIFICATIONS

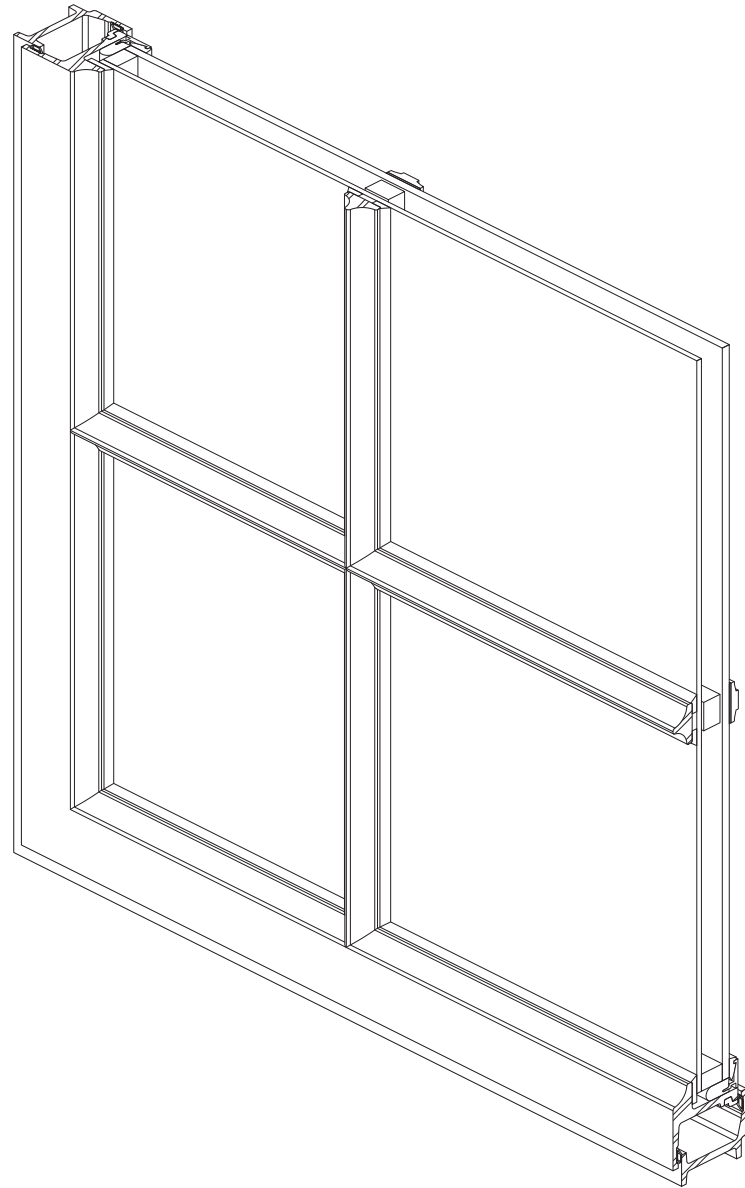
# HOPE'S®

**OLD WORLD SUITE™**  
Fixed, Projected and Casement Steel Windows

Hope's Old World Suite steel sections are specifically designed for projects calling for classical solid, hot-rolled steel windows with old world style three-point casement, or arrow-shaped, profiles. The fixed and operable configurations can be glazed with monolithic or insulated glass for energy efficiency. The unique window profiles and very narrow sightlines are ideal for new buildings as well as replacement projects.

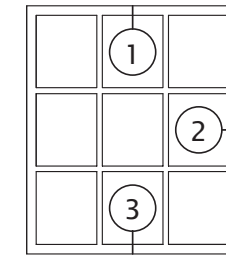
## PRODUCT FEATURES

- Historically accurate sightlines and true divided lite or simulated divided lite muntins
- Unsurpassed strength of hot-rolled steel sections
- Accepts up to 7/8" thick insulating glass with simulated divided lites; up to 1/2" thick glass with true divided lites
- ASTM compliance for air infiltration and water penetration
- Hope's Power of 5 Finishing System with hot-dip galvanizing pretreatment
- Available with Hope's Thermal Evolution™ technology

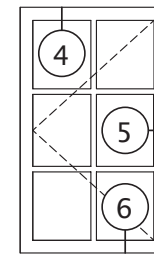


# HOPE'S®

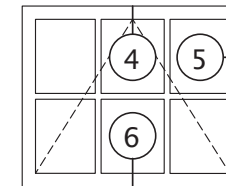
**OLD WORLD SUITE™**  
Fixed, Projected and Casement Steel Windows  
Details



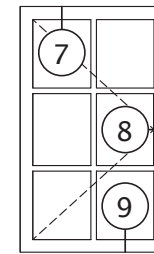
Fixed Window



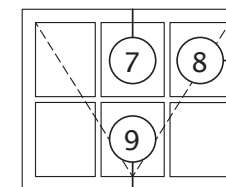
Swing-Out Casement Window



Awning Window



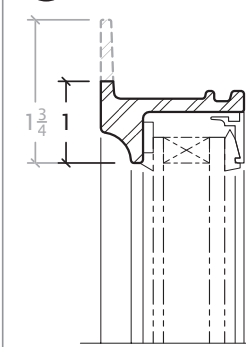
Swing-In Casement Window



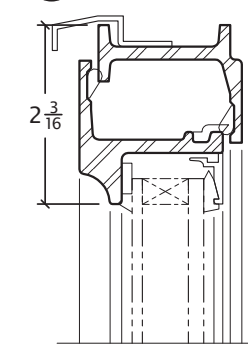
Hopper Window

## TYPICAL HEAD DETAILS

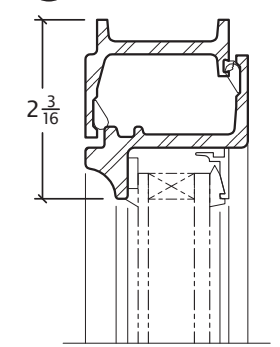
1 FIXED



4 SWING-OUT

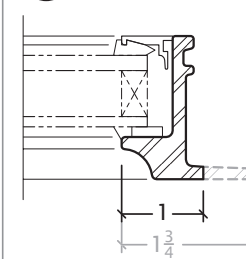


7 SWING-IN

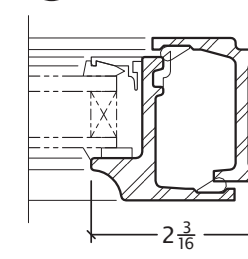


## TYPICAL JAMB DETAILS

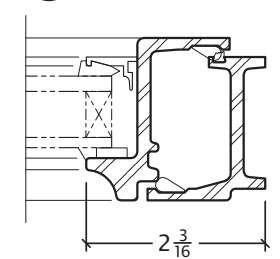
2 FIXED



5 SWING-OUT

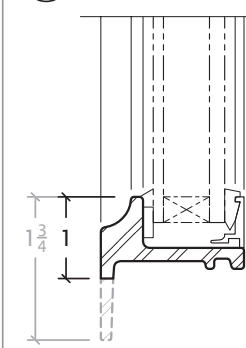


8 SWING-IN

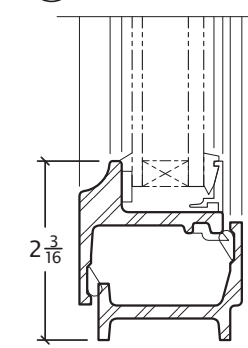


## TYPICAL SILL DETAILS

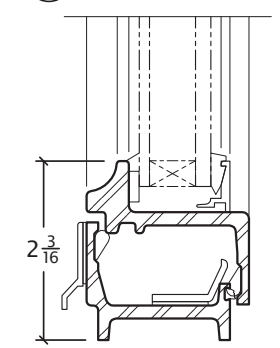
3 FIXED




6 SWING-OUT



9 SWING-IN



Details are half scale and shown inside glazed with 7/8" thick glass.  
Perimeter frame profiles are available in long leg or equal leg configurations.  
All Hope's products are custom manufactured to your specific project requirements.

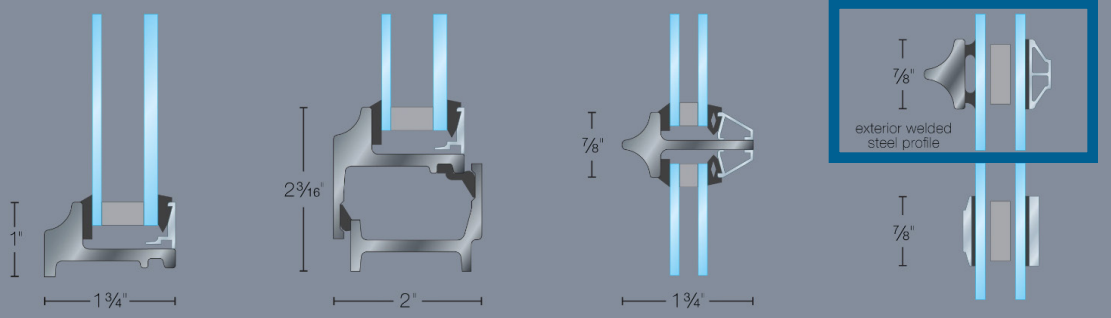



### PRODUCT PERFORMANCE

- Meets or exceeds **air infiltration** test criteria in accordance with ASTM E283
- Meets or exceeds **water penetration** test criteria in accordance with ASTM E331
- Meets or exceeds **structural** test criteria in accordance with ASTM E330
- Meets or exceeds **forced entry** test criteria in accordance with ASTM F588
- Impact-rated product meets or exceeds **missile impact and cyclic pressure** test criteria in accordance with ASTM E1886
- Impact-rated product meets or exceeds **hurricane windborne debris** test criteria in accordance with ASTM E1996

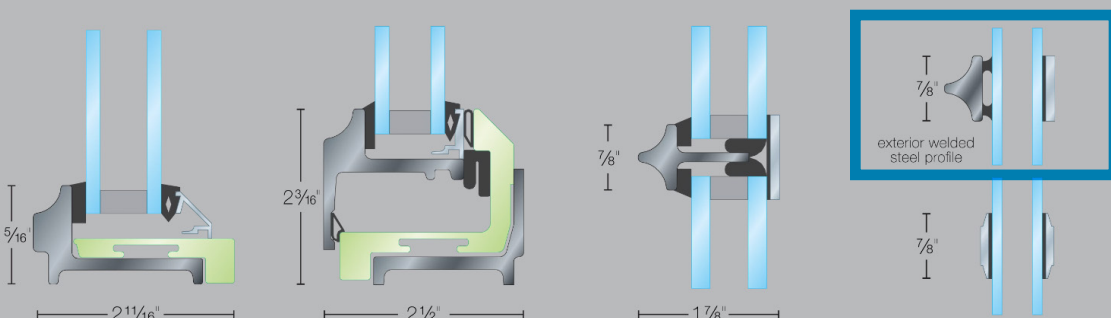
*Consult Hope's to review applicable testing and design performance data for your specific project.*

### STANDARD PROFILES



**FIXED**      **OPERABLE**      **TRUE DIVIDED LITE**      **SIMULATED DIVIDED LITE**

### THERMAL PROFILES



**THERMAL FIXED**      **THERMAL OPERABLE**      **THERMAL TRUE DIVIDED LITE**      **THERMAL SIMULATED DIVIDED LITE**



Photo: Connie Zhou