

96 CHESNUT STREET STAIR & DOOR

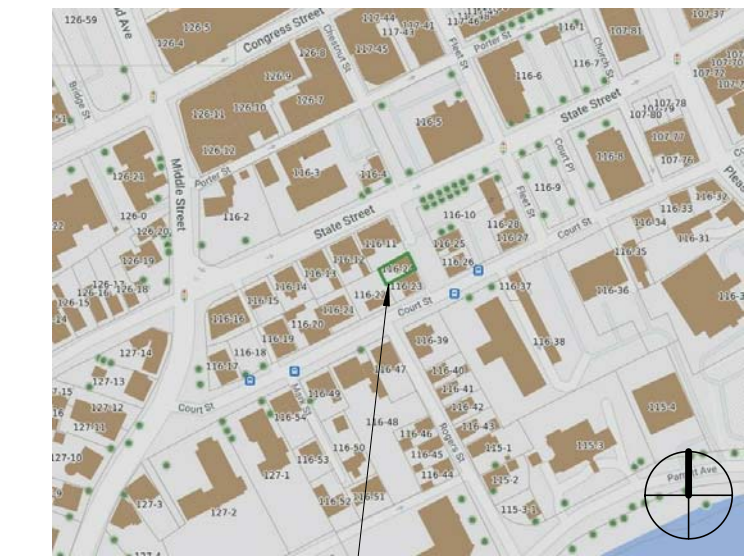
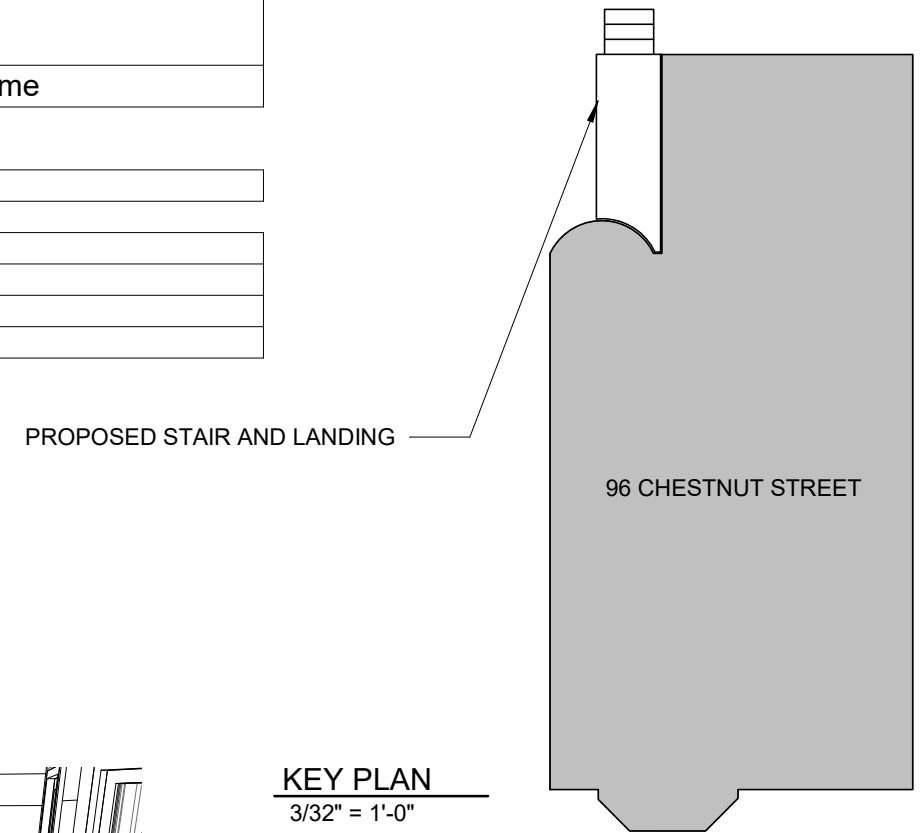
Historic District Commission Work Session - March 2023 Portsmouth, New Hampshire

General Project Description:

Proposed Work:

- ADDITION OF SMALL STAIR AND LANDING CONNECTING BUILDING TO EXISTING PATIO
- ADDITION OF SLIDING DOOR, PROVIDING ACCESS FROM KITCHEN TO STAIR
- REPOSITIONING OF EXISTING AC CONDENSERS

SHEET LIST	
Sheet Number	Sheet Name
C	COVER
A1	EXISTING CONDITIONS
A2	FLOOR PLAN AND ELEVATIONS
A3	DETAILS AND MATERIALS
A4	MATERIALS AND CUT SHEETS



EXISTING IMAGES- CHESTNUT STREET (LEFT), REAR PATIO AND CONDENSERS

PROPOSED ISOMETRIC

96 CHESTNUT STREET
PORTSMOUTH, NH 03801

LOCATION

© 2023 McHenry Architecture

REAR STAIR ADDITION

96 CHESTNUT STREET
PORTSMOUTH, NH 03801

COVER

Historic District Commission Public Hearing - March 2023

McHENRY ARCHITECTURE

4 Market Street
Portsmouth, New Hampshire

C

02/06/2023

McHA: EKW/MG
AS INDICATED



LOCATION OF PROPOSED STAIR AND DOOR



© 2023 McHenry Architecture

REAR STAIR ADDITION

96 CHESTNUT STREET
PORTSMOUTH, NH 03801

EXISTING CONDITIONS

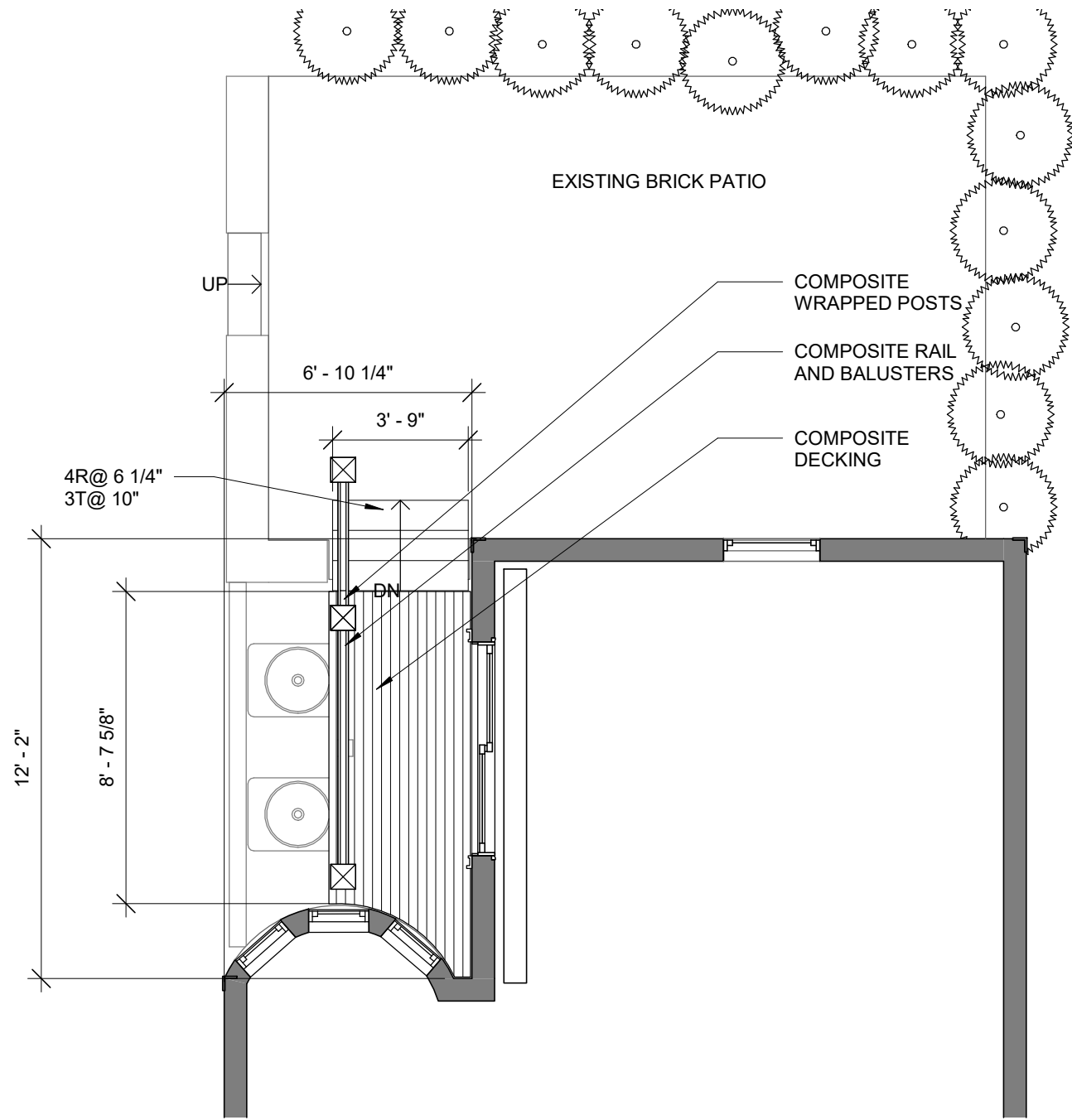
Historic District Commission Public Hearing - March 2023

McHENRY ARCHITECTURE

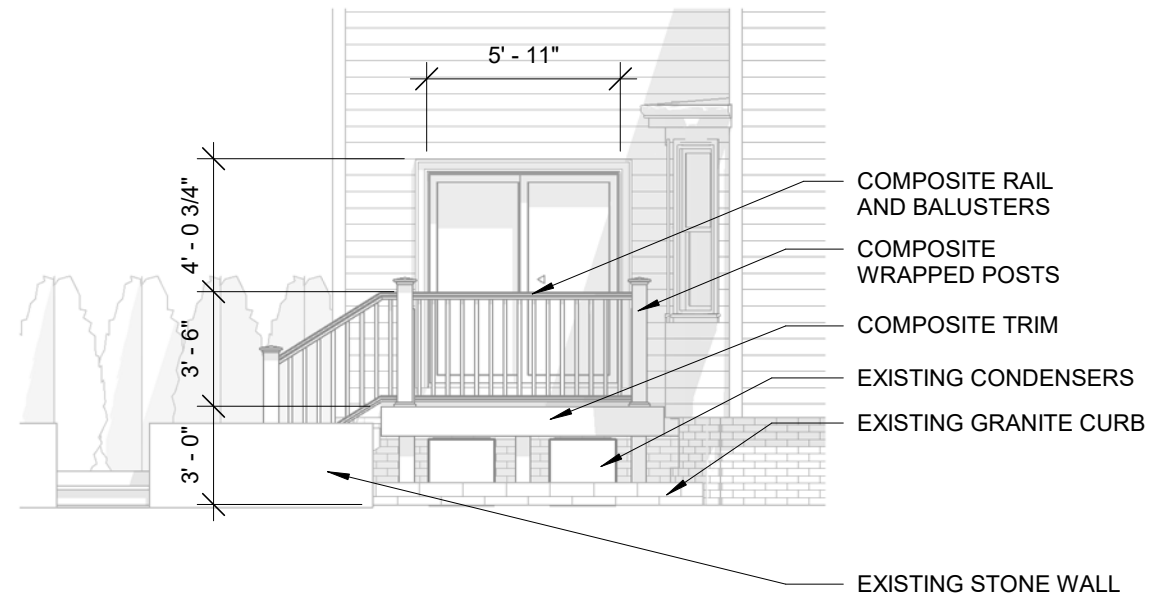
4 Market Street
Portsmouth, New Hampshire

A1

02/06/2023
McHA: EKW/MG
NOT TO SCALE



1 Level 1
1/4" = 1'-0"



2 WEST ELEVATION
3/16" = 1'-0"



3 NORTH ELEVATION
3/16" = 1'-0"

© 2023 McHenry Architecture

REAR STAIR ADDITION
96 CHESTNUT STREET
PORTSMOUTH, NH 03801

FLOOR PLAN AND ELEVATIONS
Historic District Commission Public Hearing - March 2023

McHENRY ARCHITECTURE
4 Market Street
Portsmouth, New Hampshire

A2

02/06/2023
McHA: EKW/MG
AS INDICATED



AZEK TIMBERTECH CLASSIC COMPOSITE SERIES RAILING AND GUARDRAIL, OR EQUAL



PREMIER RAILING®
TOP RAIL SIZE: 3.5" X 2.7"

TOP RAIL PROFILE



COMPOSITE DECKING: AZEK TIMBERTECH, OR EQUAL



EXISTING WINDOW TRIM- SLIDING DOOR TO MATCH



MARVIN ELEVATE SLIDING PATIO DOOR (WILL BE WHITE)

© 2023 McHenry Architecture

REAR STAIR ADDITION

96 CHESTNUT STREET
PORTSMOUTH, NH 03801

DETAILS AND MATERIALS

Historic District Commission Public Hearing - March 2023

McHENRY ARCHITECTURE

4 Market Street
Portsmouth, New Hampshire

A3

02/06/2023

McHA: EKW/MG

NOT TO SCALE

Z:\Active Project Files\23021-96 CHESTNUT\Dwgs\2-SD\96 CHESTNUT.rvt

ELEVATE SLIDING FRENCH DOOR



Elevate Sliding French door in painted White with Northfield handle in White



Elevate Sliding French door in Stone White with Northfield handle in Oil-Rubbed Bronze

ELEVATE SLIDING FRENCH DOOR

The Marvin Elevate Sliding French door combines the elegance of wider side stiles and top rails of a French door with the practical, space-saving design a sliding door offers. 2-, 3-, and 4-panel configurations offer the flexibility to accommodate expansive views up to 16 feet wide with a rich wood interior and long-lasting, low-maintenance fiberglass exterior for the best in performance and style.



INTERIOR



EXTERIOR



SILL DETAIL SHOWN IN BRONZE



Available with IZ3

ELEVATE DOOR OPTIONS



Elevate Sliding French door in Designer Black

**INTERIORS****WOOD**

Bare pine, painted Designer Black, painted White, or clear coat

**EXTERIORS****FIBERGLASS**

5 color options

**SIZING**

Standard and custom-sized

DESIGN FLEXIBILITY

Wide range of design options

HARDWARE

Door hardware in 6 finish options

Door handle styles: Cambridge and Northfield

For enhanced durability in harsh climates, some exterior hardware options are available with extra long-lasting PVD finishes

COASTAL + WATERFRONT

Marvin Elevate doors are well suited for coastal or waterfront areas with special products and hardware specifically designed for hurricane zones

Unit Features

Elevate Sliding French Door: **ELSFD**

Elevate Sliding French Door IZ3: **ELSFD IZ3**

For applicable certification and code information, refer to the Introduction and Product Performance chapter.

Frame and Panel:

- The frame and panel exteriors are made of Ultrex®, an advanced fiberglass reinforced pultrusion material that is resistant to thermal conductance.
- Exterior colors: Stone White, Pebble Gray, Bronze, Cashmere, or Ebony. Frame and sash color may be selected independently.
- The interior is non finger-jointed pine, kiln-dried to a moisture content 6-12% at time of fabrication. Water repellent, preservative treated. Interior wood is available as pine bare wood or factory applied white, clear, or designer black interior finishes. Frame and sash color may be selected independently.

Frame:

- Frame thickness is 1 31/64" (44). Frame width of 4 9/16" (116). 4/4 non finger-jointed pine interior stop is applied to all units. Sill height is 2 1/8" (54) high by 6 1/16" (154) deep. On IZ3 and HP units the sill height is 2 13/16" (71) high. Interior sill liner is cellular PVC.

Panel:

- Composite sash thickness is 1 3/4" (44), stiles and top rails 3 5/8" (92), bottom rail width 6" (152) Ultrex is .110" (3) thick. Two astragals are utilized on the IZ3 and HP units and four astragals are utilized on 4-panel units with a frame height greater than 86" (2184). One on each interior operating panel and one on each exterior stationary panel meeting stile. Astragals are structural members of the panel providing stiffness for the meeting stiles.

Jamb Extension:

- Extension Thickness: 9/16" (14)
- Multiple depths available from 1/8" (3), 1/4"(6), and depths varying between 1/2"(13) and 4"(102) at 1/16" (2) increments
- Maximum jamb depth is 8 9/16". (217)
- 6 13/16" (173) or 6 13/16" (173) jamb extension - factory-applied
- All other jamb depth options are available shipped loose.
- Material: Bare Pine
- Option: factory applied white, designer black and clear lacquer interior finish

Hardware:

- Multi-point lock with keyed cylinder.
 - The lock assembly and keeper feature a two point opposing engagement providing tamper prevention.
 - An anti-slam pin is standard to prevent locking when the door is open.
- Handle Sets
 - Handle Set: Interior and exterior selected separately.
 - Standard finish is Almond Frost. Optional finishes: White, Brass, Satin Nickel, Oil Rubbed Bronze, and Matte Black.
- Optional Coastal Hardware: Available on both Non-IZ3 and IZ3 products. Does not include handle sets. Coastal Grade finish is featured on handle sets with a Brass PVD finish and is available in oil rubbed bronze, satin nickel, and brass.
- Top and bottom flush bolt assemblies secure the secondary operator panel in the closed position on OXXO doors. Ensures secondary panel is fully closed allowing primary panel to lock to the secondary panel and to be engaged prior to locking the primary panel.
- The flush bolts are zinc die-cast and will be painted Pearl White or Black.

Installation:

- Factory applied folding nailing fin and drip cap system.
- Optional installation brackets for masonry available.
- Factory-supplied field mulling kits are available for standard assemblies.
- IZ3 units require installation clips.

Unit Features Continued**Weather Strip:**

- All weather strip is either black, white, or beige depending on the selected weather strip color.
 - Operator jamb, header, interlock and astragal weather strip color to complement exterior finish.
 - Stationary jamb weather strip color is selectable but defaults to complement interior finish.
 - Options: Beige, black and white
- All units are constructed with weather strip at all panel perimeter joints. Jambs, head jamb, and sills utilize a leaf-type weather strip.
- The operator interlock uses full length leaf style weather strip, and the stationary interlock utilizes a bulb weather strip.
- For the four-panel doors, an extruded bulb weather strip is secured to the secondary operator panel astragal and seals against the primary panel.
- The sill weather strip will match the sill color. When a Bronze Sill is ordered, the sill weather strip will be black and when a Beige Sill is ordered, the sill weather strip will be beige.

Glazing:

- Dual-pane units are manufactured with 3/4" (19) Tempered IG with Low E1, E2, E3, or E3/ERS coatings including argon gas or air fill. Clear (uncoated) glass available with air fill only. Obscure glass is available as an option.
- The glazing seal is a silicone bedding on both interior and exterior surfaces utilized in a sandwich style sash.
- STC/OITC values are available for 3.1 mm glass thickness.
 - Optional 3.1/4.7 STC/OITC Upgrade glass is available. See the Product Performance chapter for STC and OITC ratings.
- Decorative glass options include glue chip, frost, and tinted (bronze, gray or green). Decorative glass is not available with Low E1 Low E3/ERS or STC/OITC Upgrade options.

IZ3 Glazing:

- Optional IZ3 available on selected sizes. IZ3 for winds up to 140 miles per hour.
- Glass is laminated, insulated Low E2 or E3 Argon, consisting of annealed or tempered glass exterior and laminated glass interior.
- The laminated glass is comprised of two pieces of glass with either an SGP or PVB laminate layer between.
- Interior and exterior glazing compound is silicone, in a sandwich style glazing system.

Screen:

- Top hung extruded aluminum screens available as an option. Aluminum metal to match exterior Ultrex color.
- Screen Mesh: Marvin BrightView™, Options: None.
- Includes all mounting and latching hardware.

Section Details: Standard - 4 9/16" Jamb (2 panels)

Scale: 3" = 1' 0"

