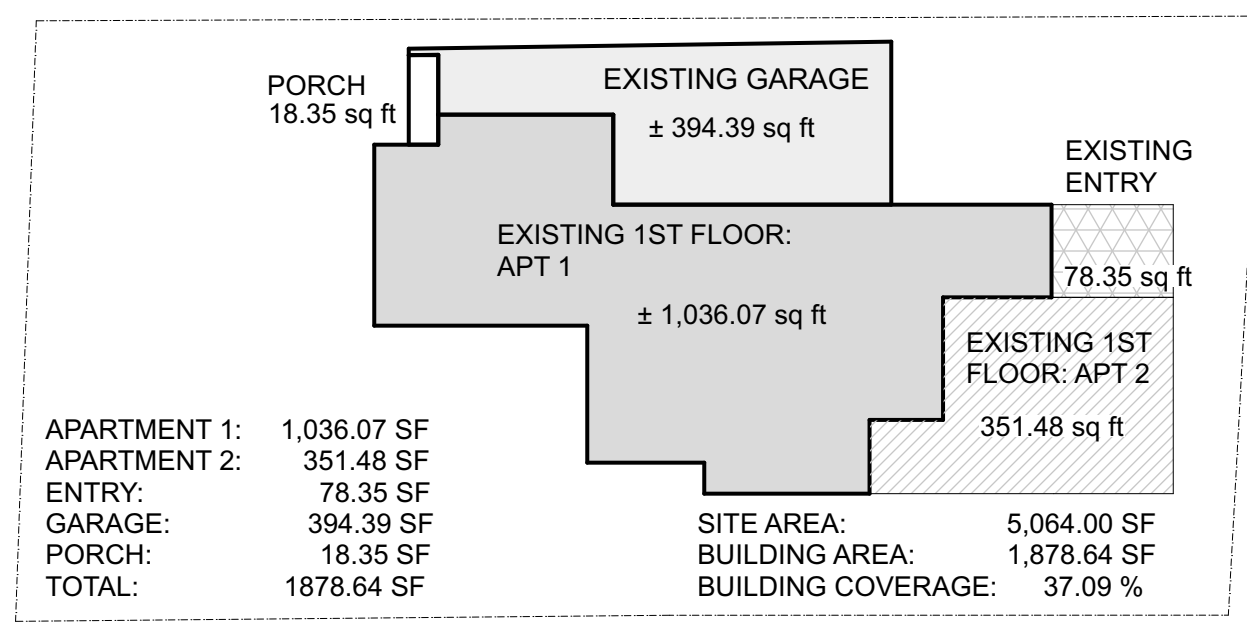


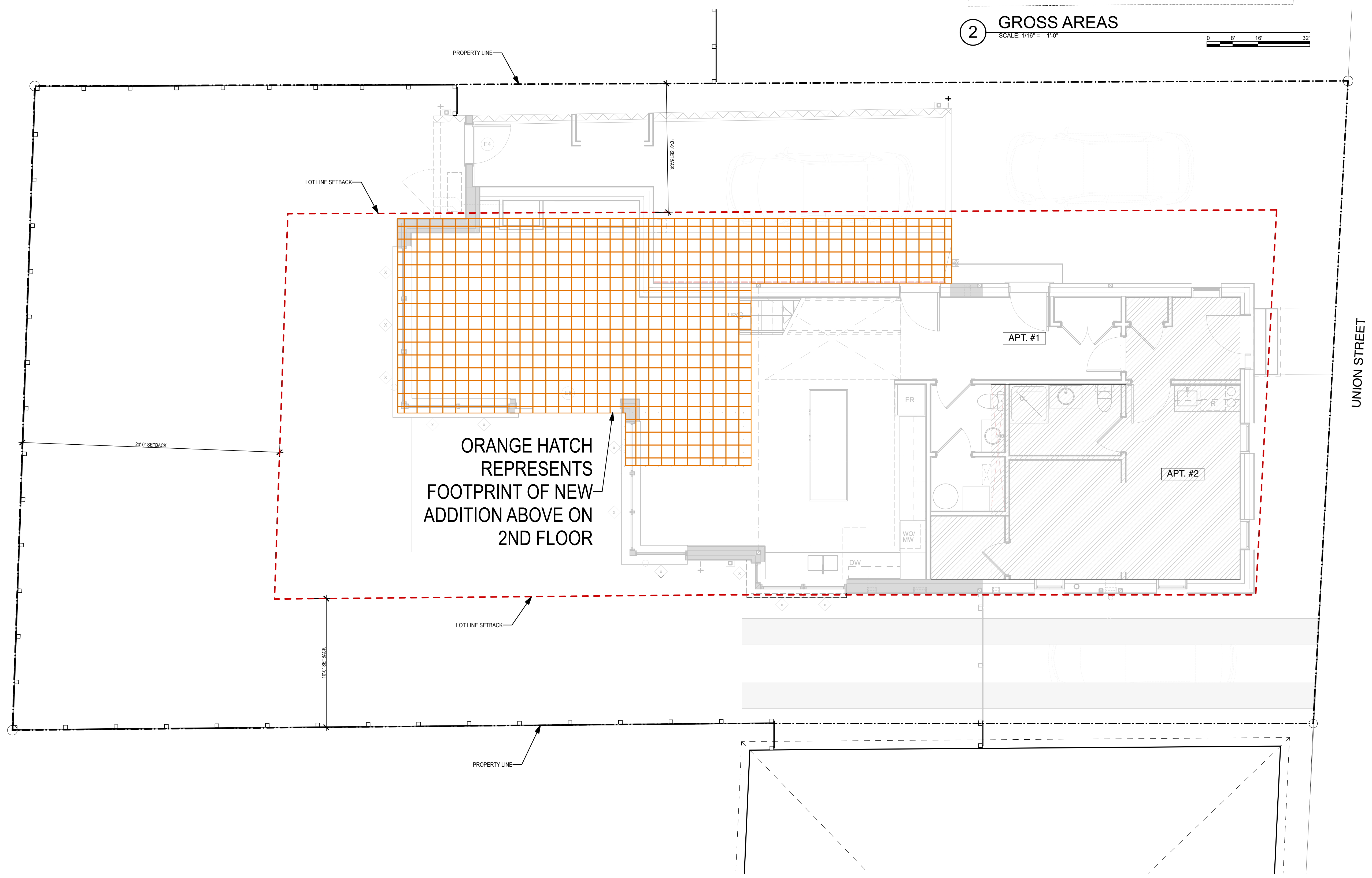
NOT FOR CONSTRUCTION

PROJECT	ALL2
DATE	08/18/2023
	REVISED 1

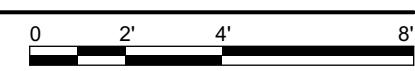
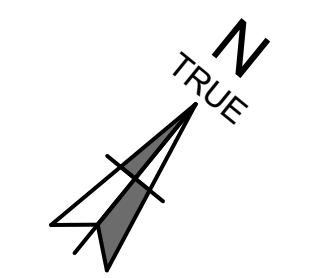
DRAWN BY	RL/SS
PHASE	For HDC Application

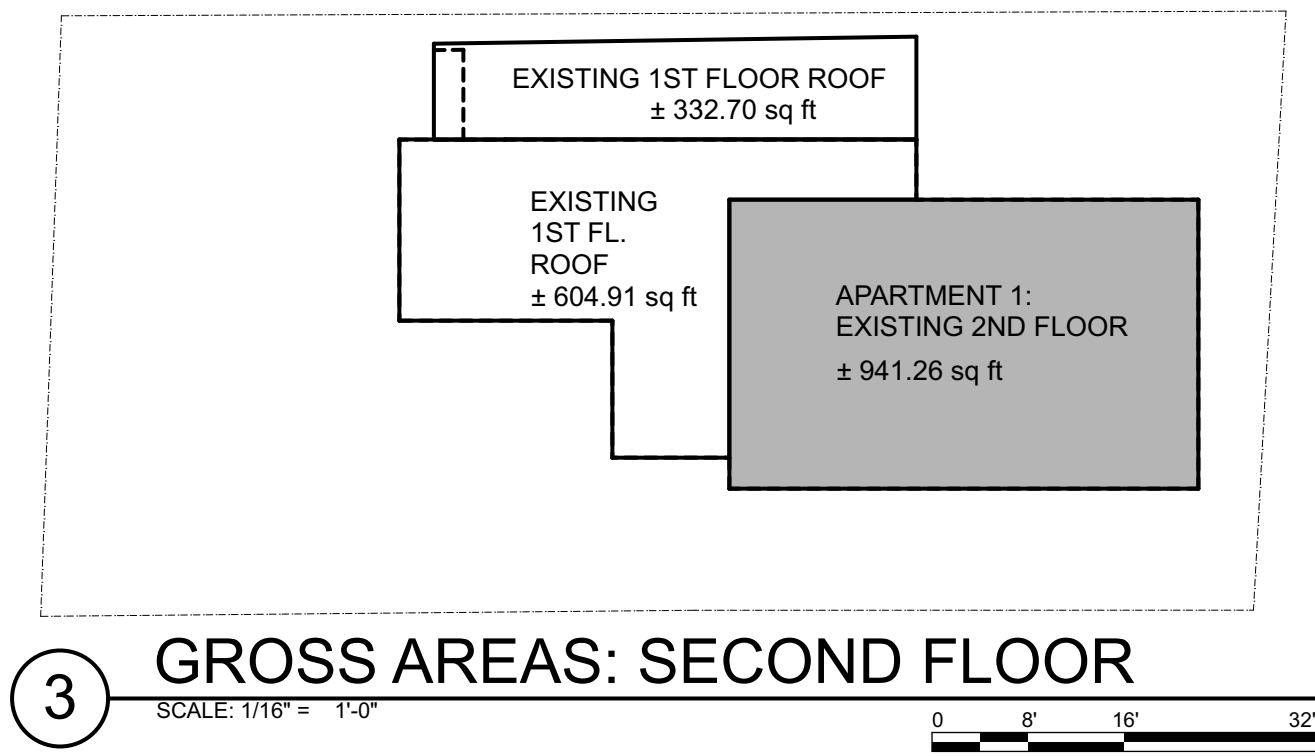


2 GROSS AREAS
 SCALE: 1/16" = 1'-0"
 0 8' 16' 32'

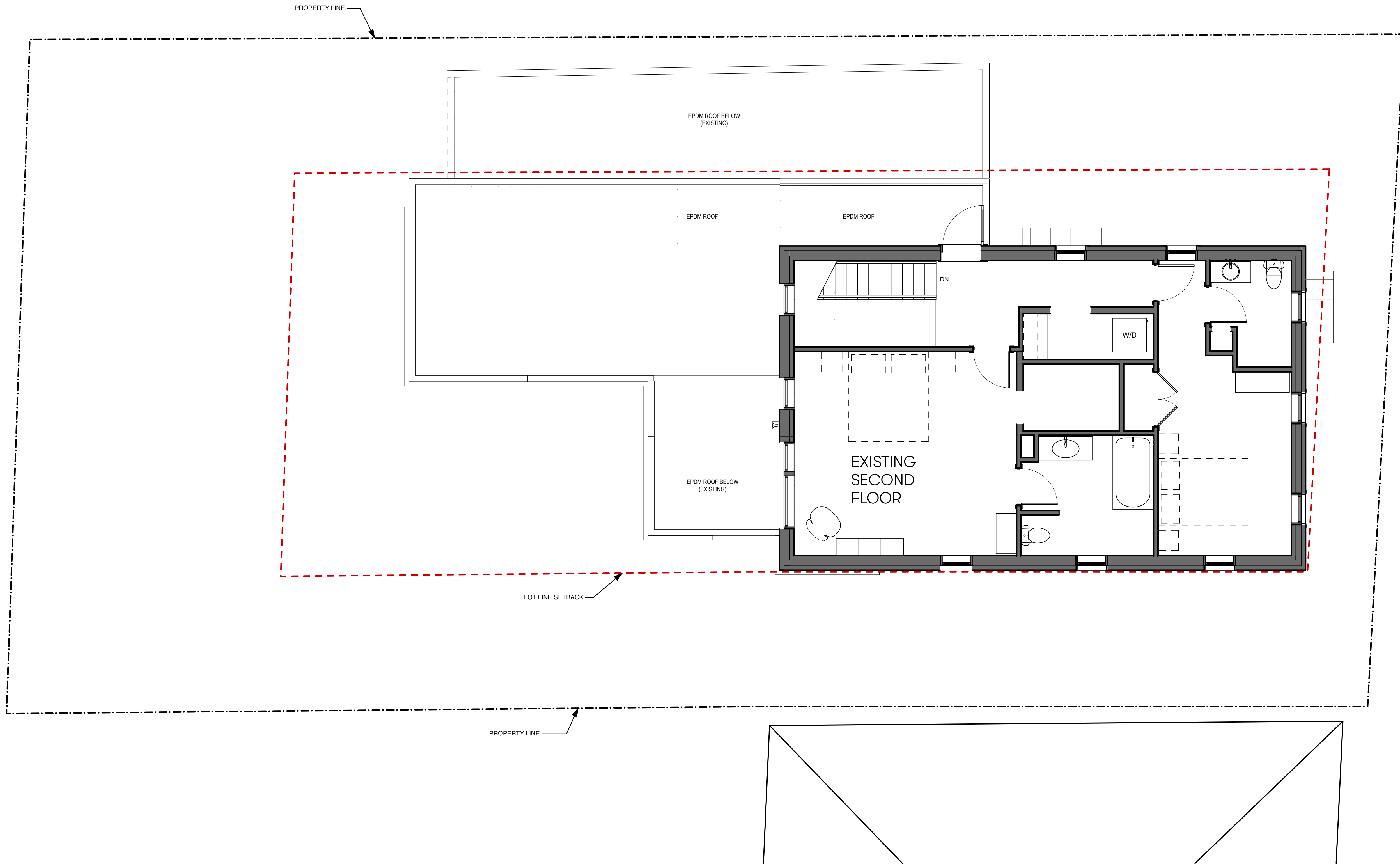


1 1ST. FLOOR
 SCALE: 1/4" = 1'-0"

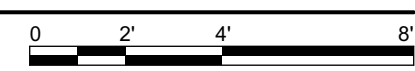
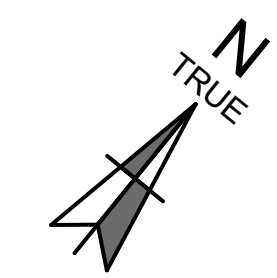




3 GROSS AREAS: SECOND FLOOR
SCALE: 1/16" = 1'-0"



1 2ND. FLOOR
SCALE: 1/4" = 1'-0"

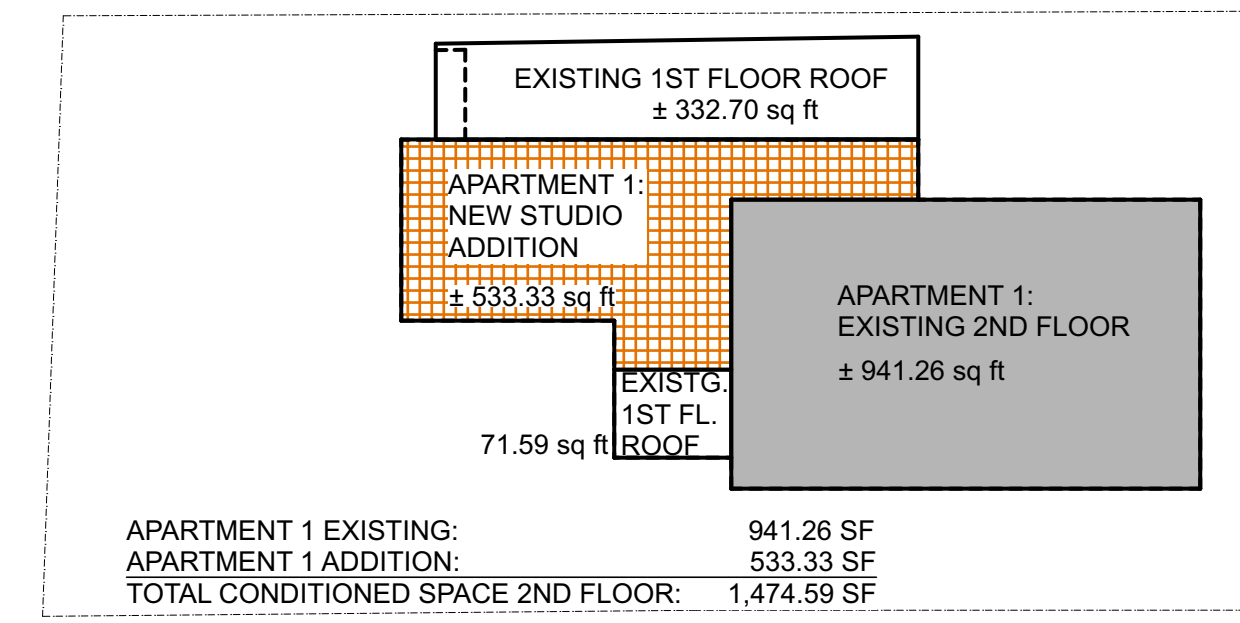


NOT FOR CONSTRUCTION

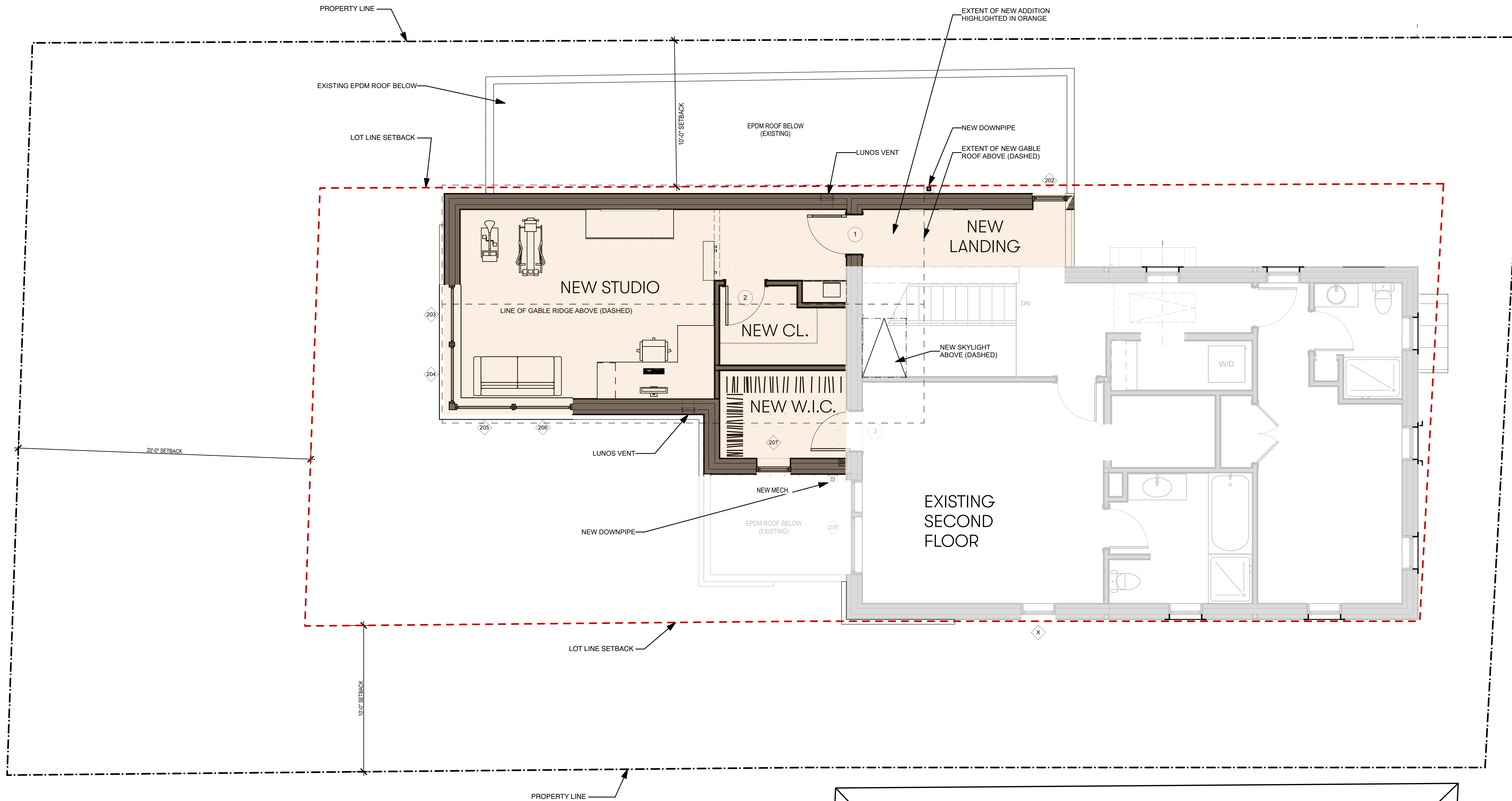
PROJECT	ALL2
DATE	08/18/2023
	REVISED 1
DRAWN BY	RL/SS
PHASE	For HDC Application

PROJECT
**ALLISON
STUDIO
ADDITION**

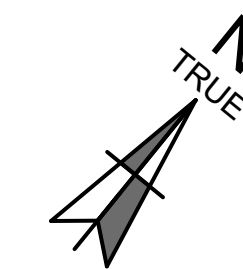
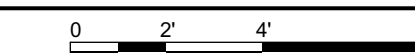
236 Union Street,
Portsmouth, NH 03801



2 GROSS AREAS: SECOND FLOOR
SCALE: 1/16" = 1'-0"
0 8' 16' 32'



1 2nd FLOOR
SCALE: 1/4" = 1'-0"

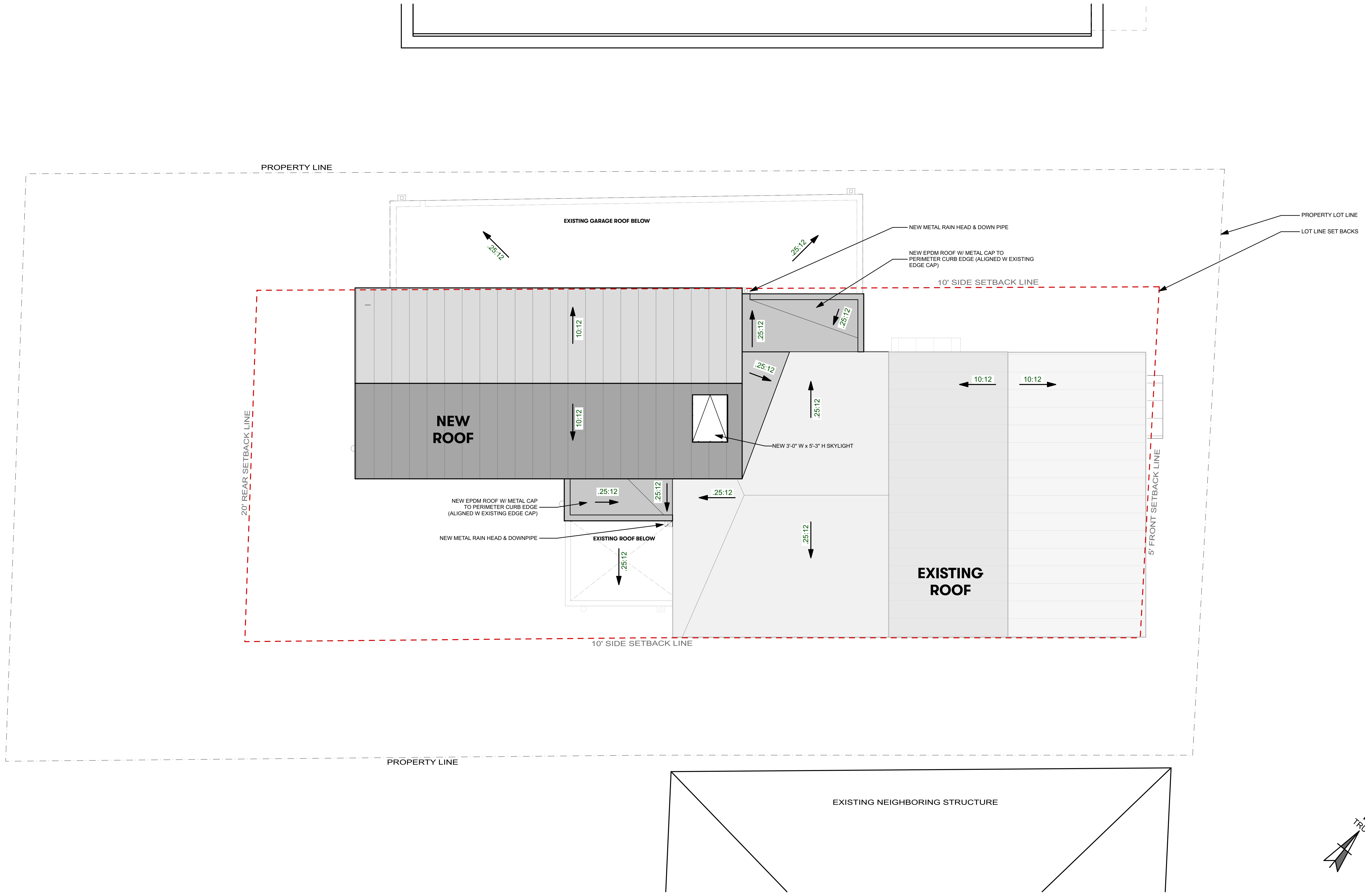


NOT FOR CONSTRUCTION

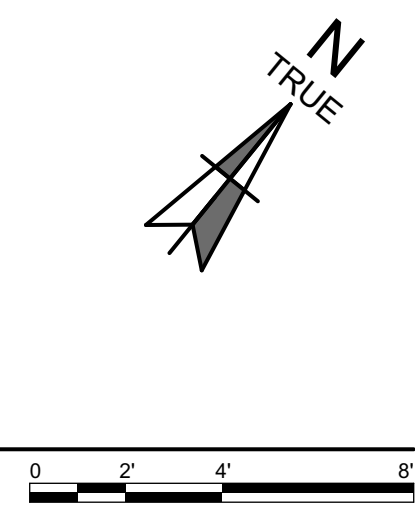
PROJECT	ALL2
DATE	08/18/2023
	REVISED 1
DRAWN BY	RL/SS
PHASE	For HDC Application

PROJECT
**ALLISON
STUDIO
ADDITION**

236 Union Street,
Portsmouth, NH 03801



1 ROOF
SCALE: 1/4" = 1'-0"



NOT FOR CONSTRUCTION

PROJECT	ALL2
DATE	08/18/2023
	REVISED 1
DRAWN BY	RL/SS
PHASE	For HDC Application

PROJECT
**ALLISON
STUDIO
ADDITION**

236 Union Street,
Portsmouth, NH 03801



2 EXISTING CONDITIONS UNION STREET ELEVATION - NORTH-EAST
SCALE: 1/4" = 1'-0"



1 EXISTING CONDITIONS SIDE ELEVATION-NORTH-WEST
SCALE: 1/4" = 1'-0"

NOT FOR CONSTRUCTION

PROJECT ALL2
DATE 08/18/2023
REVISED 1

DRAWN BY RL/SS
PHASE For HDC Application

EXISTING
CONDITIONS
ELEVATIONS

A-2.1

PROJECT
**ALLISON
STUDIO
ADDITION**

236 Union Street,
Portsmouth, NH 03801



2 EXISTING BACK ELEVATION - SOUTHWEST
SCALE: 1/4" = 1'-0"



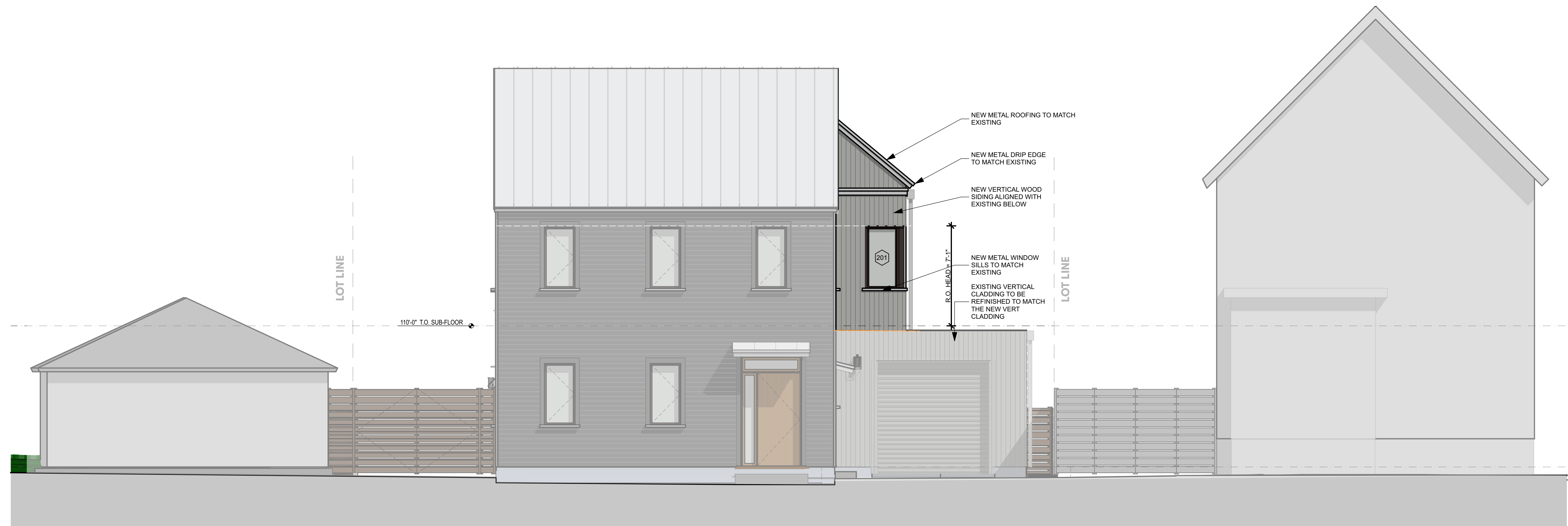
1 EXISTING SIDE ELEVATION - SOUTHEAST
SCALE: 1/4" = 1'-0"

NOT FOR CONSTRUCTION

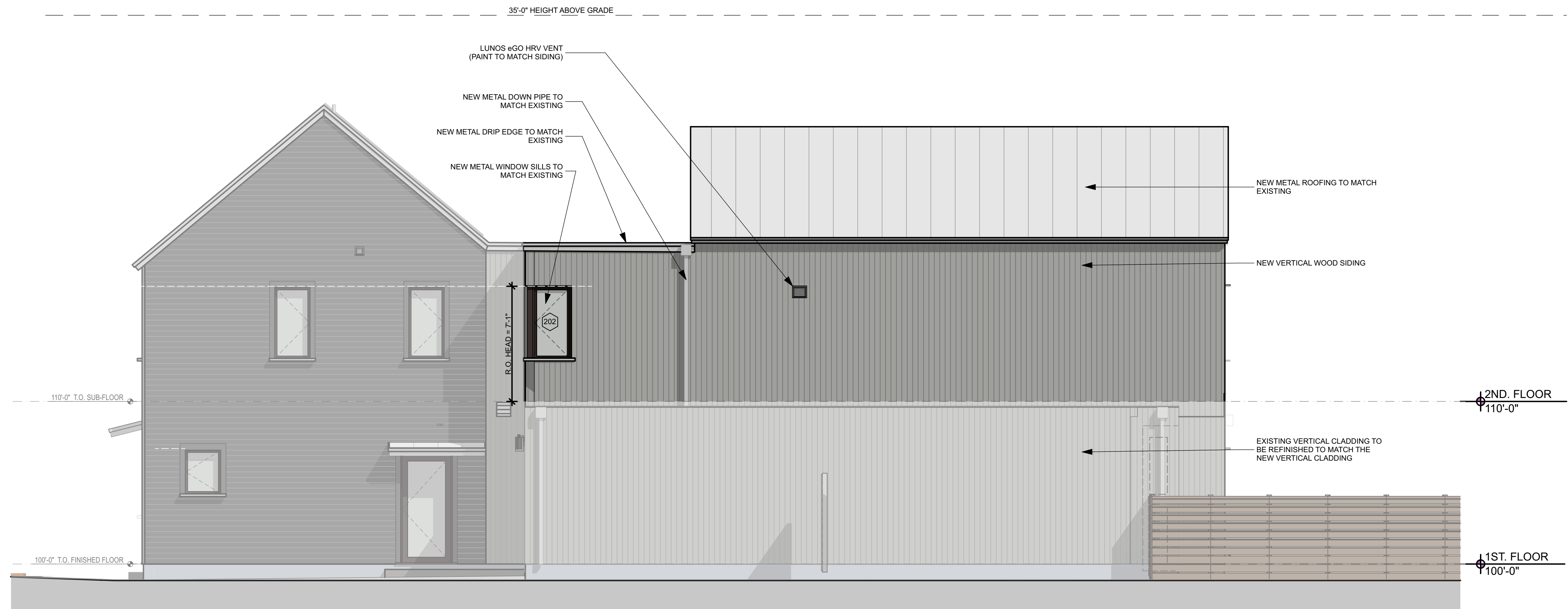
PROJECT ALL2
DATE 08/18/2023
REVISED 1

DRAWN BY RL/SS
PHASE For HDC Application

EXISTING
CONDITIONS
ELEVATIONS
A-2.2



2 PROPOSED UNION STREET ELEVATION - NORTHEAST
SCALE: 1/4" = 1'-0"

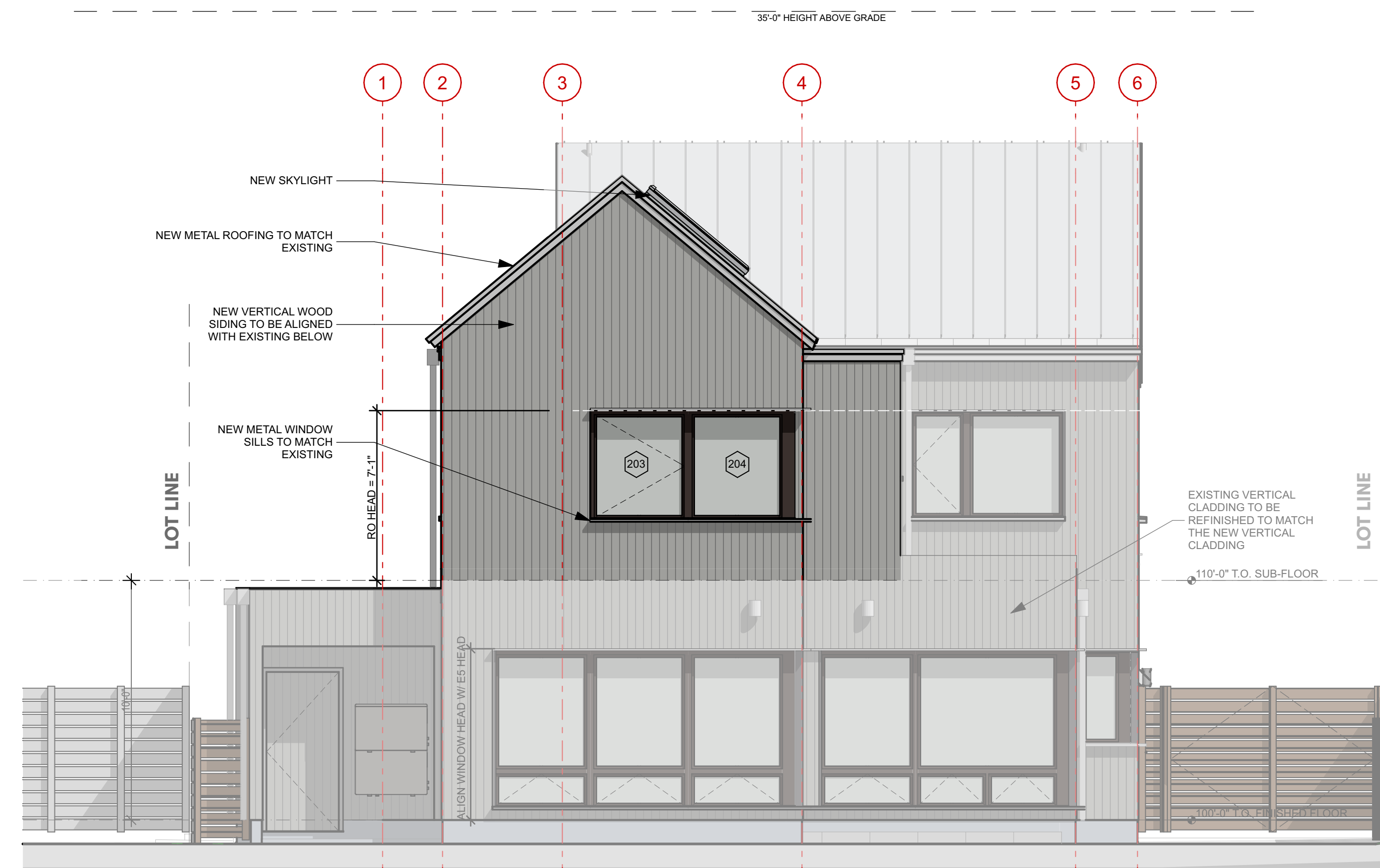


1 PROPOSED SIDE ELEVATION - NORTHWEST
SCALE: 1/4" = 1'-0"

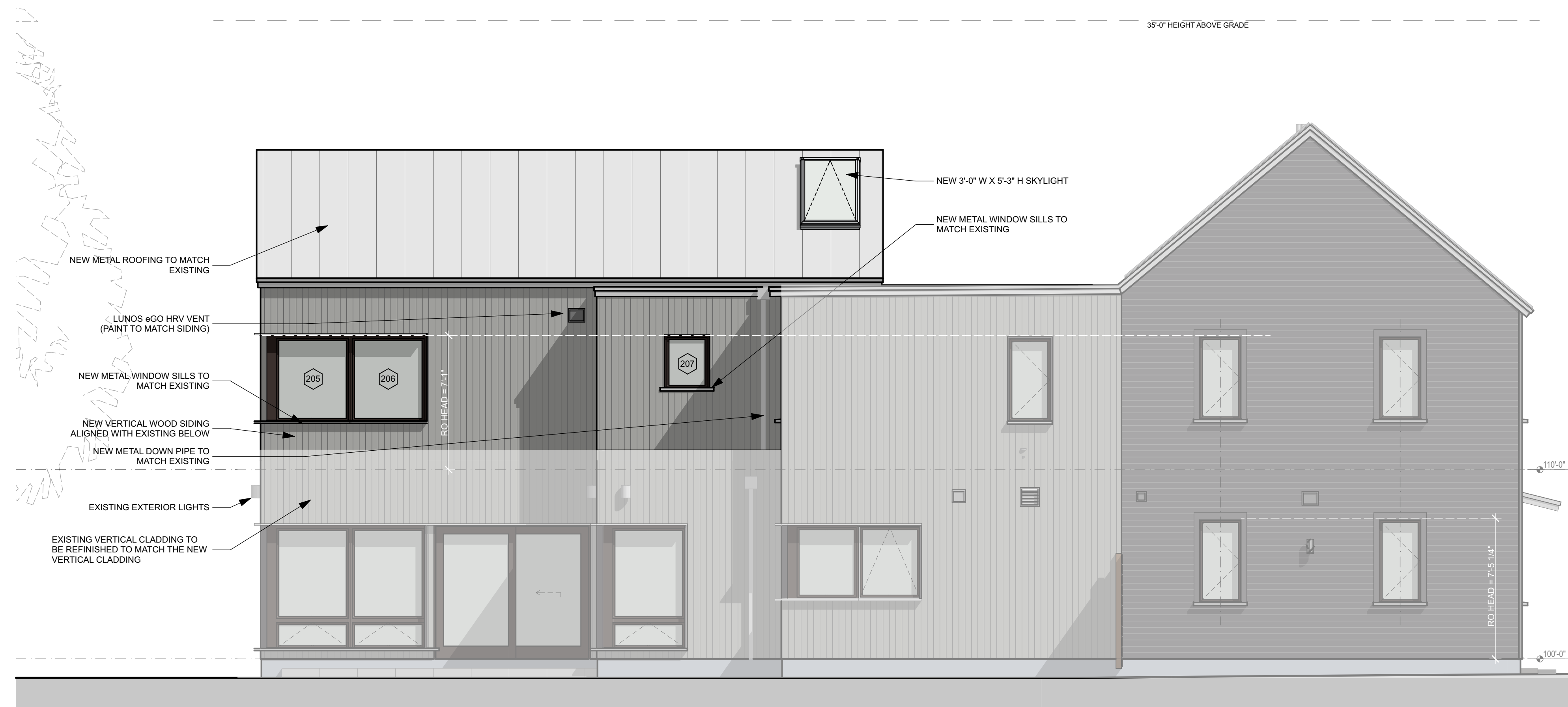
NOT FOR CONSTRUCTION

PROJECT	ALL2
DATE	08/18/2023
	REVISED 1

DRAWN BY	RL/SS
PHASE	For HDC Application



2 PROPOSED BACK ELEVATION - SOUTHWEST
SCALE: 1/4" = 1'-0"



1 PROPOSED SIDE ELEVATION - SOUTHEAST
SCALE: 1/4" = 1'-0"

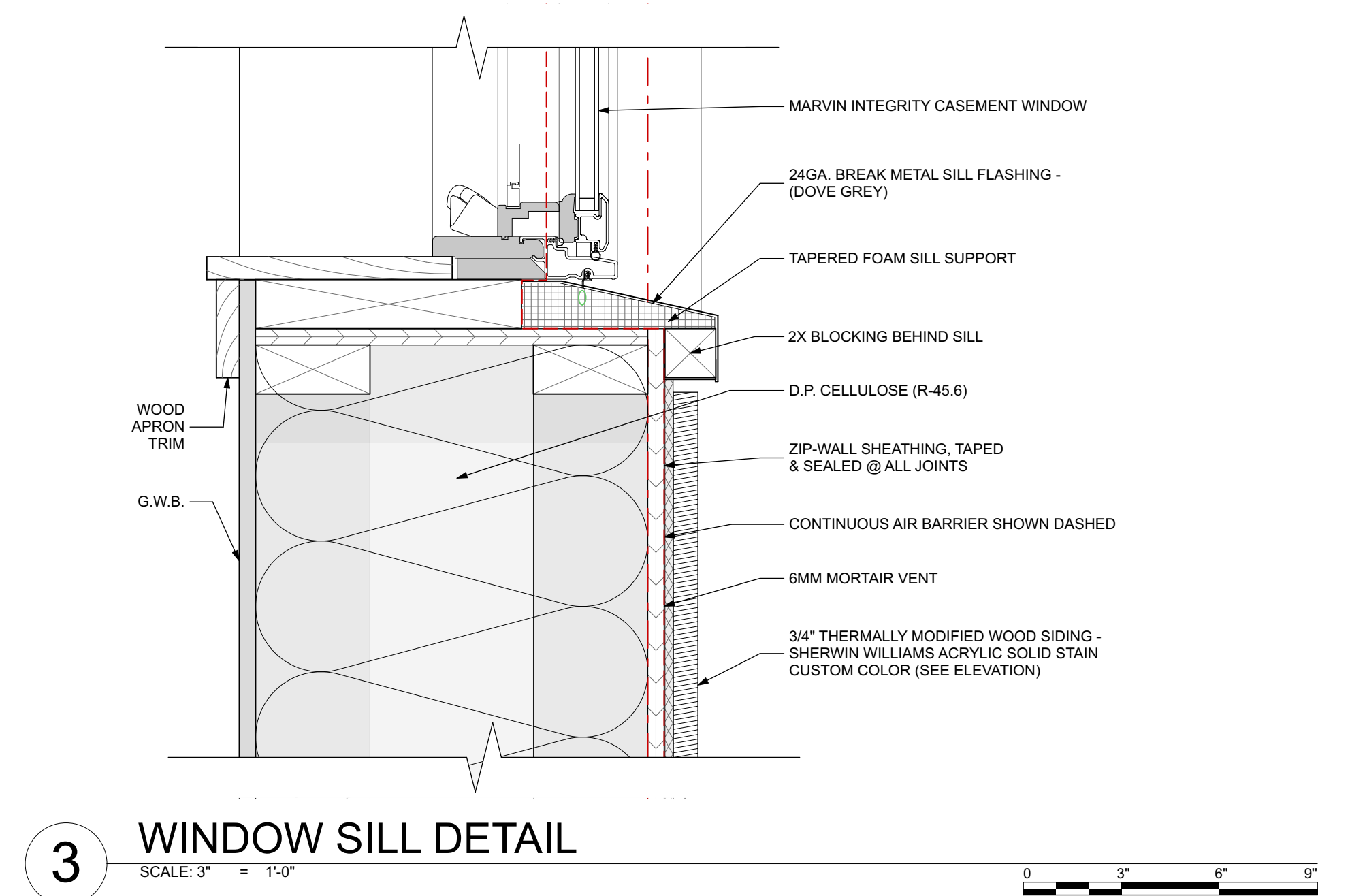
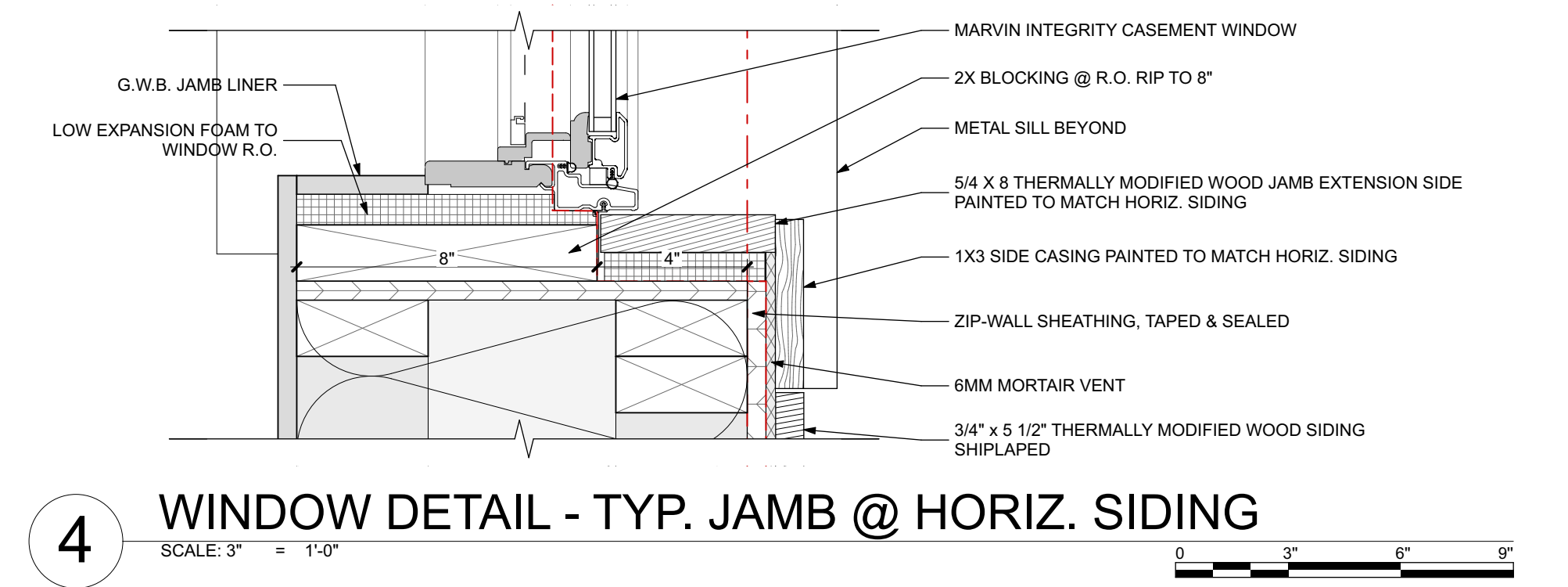
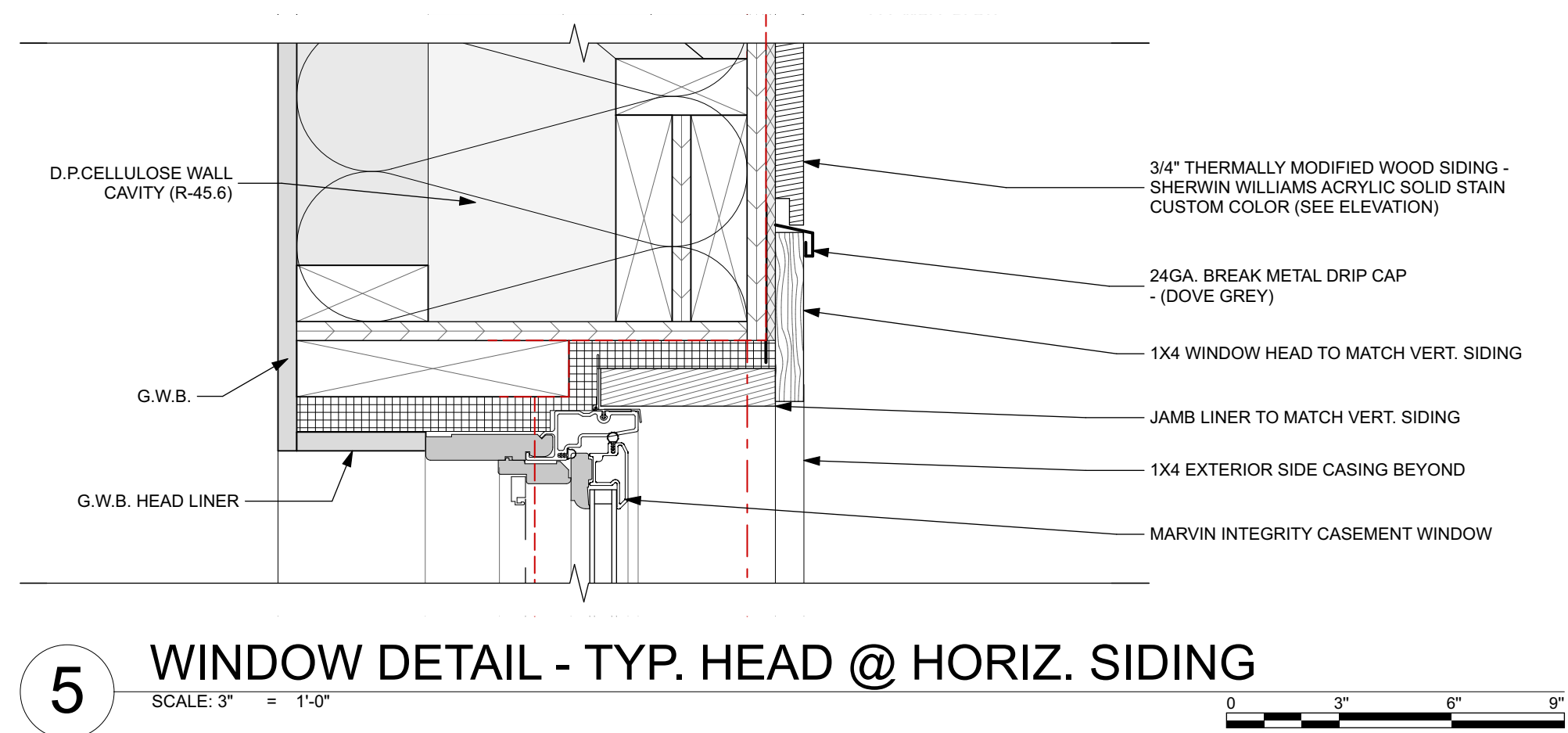
PROJECT
ALLISON STUDIO ADDITION

236 Union Street,
Portsmouth, NH 03801

NOT FOR CONSTRUCTION

PROJECT ALL2
DATE 08/18/2023
REVISED 1

DRAWN BY RL/SS
PHASE For HDC Application



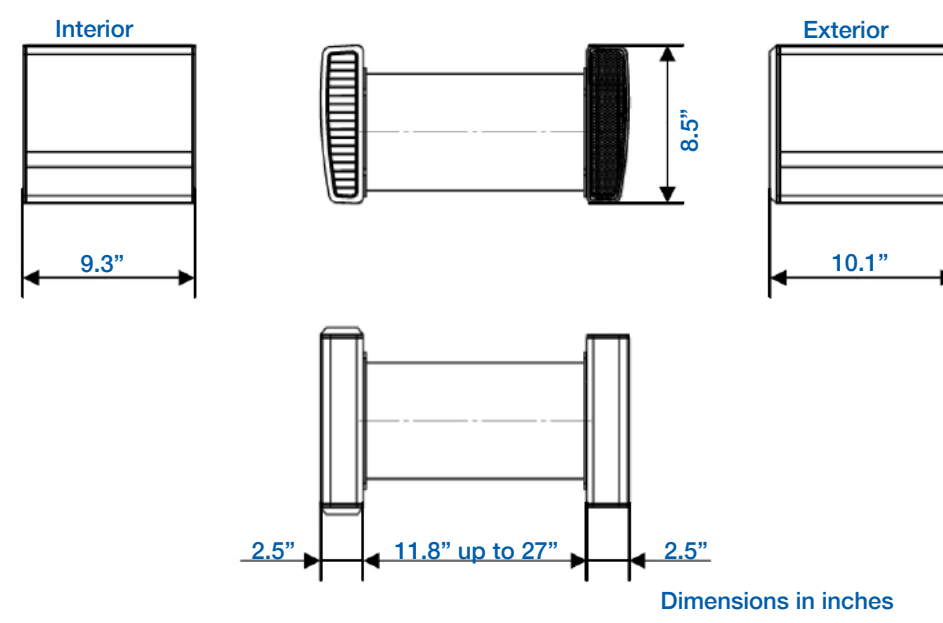
2 PHOTO OF EXISTING WINDOW (#201) NEW WINDOWS TO MATCH
SCALE: 3" = 1'-0"

WINDOW SCHEDULE													
ID	EXTERIOR	UNIT W	UNIT H	QUANTITY	AREA	TYPE	MANUFACTURER	FRAME	SHGC	U-VALUE	TEMPERED	EGRESS	NOTES
201		2'-4"	4'-7 1/8"	1	13.27	FIXED	MARVIN	WOOD/ ULTREX®	0.30	0.27			CORNER: REUSE EXISTING
202		2'-4"	4'-7 1/8"	1	13.27	CASEMENT	MARVIN	WOOD/ ULTREX®	0.30	0.27			CORNER: REUSE EXISTING
203		4'-0"	4'-7 1/8"	1	19.35	CASEMENT	MARVIN	WOOD/ ULTREX®	0.30	0.27			
204		4'-0"	4'-7 1/8"	1	22.71	FIXED	MARVIN	WOOD/ ULTREX®	0.30	0.27			CORNER
205		4'-0"	4'-7 1/8"	1	22.71	FIXED	MARVIN	WOOD/ ULTREX®	0.30	0.27			CORNER
206		4'-0"	4'-7 1/8"	1	19.35	FIXED	MARVIN	WOOD/ ULTREX®	0.30	0.27			
207		2'-4"	2'-11 1/8"	1	7.00	FIXED	MARVIN	WOOD/ ULTREX®	0.30	0.27			
208		6'-5"	4'-7 1/8"	1	29.80	CASEMENT/ FIXED	MARVIN	WOOD/ ULTREX®	0.30	0.27			CASEMENT 2955 / FIXED 4955
				8	147.46 ft²								

1 Window Schedule
SCALE: 1" = 1'-0"

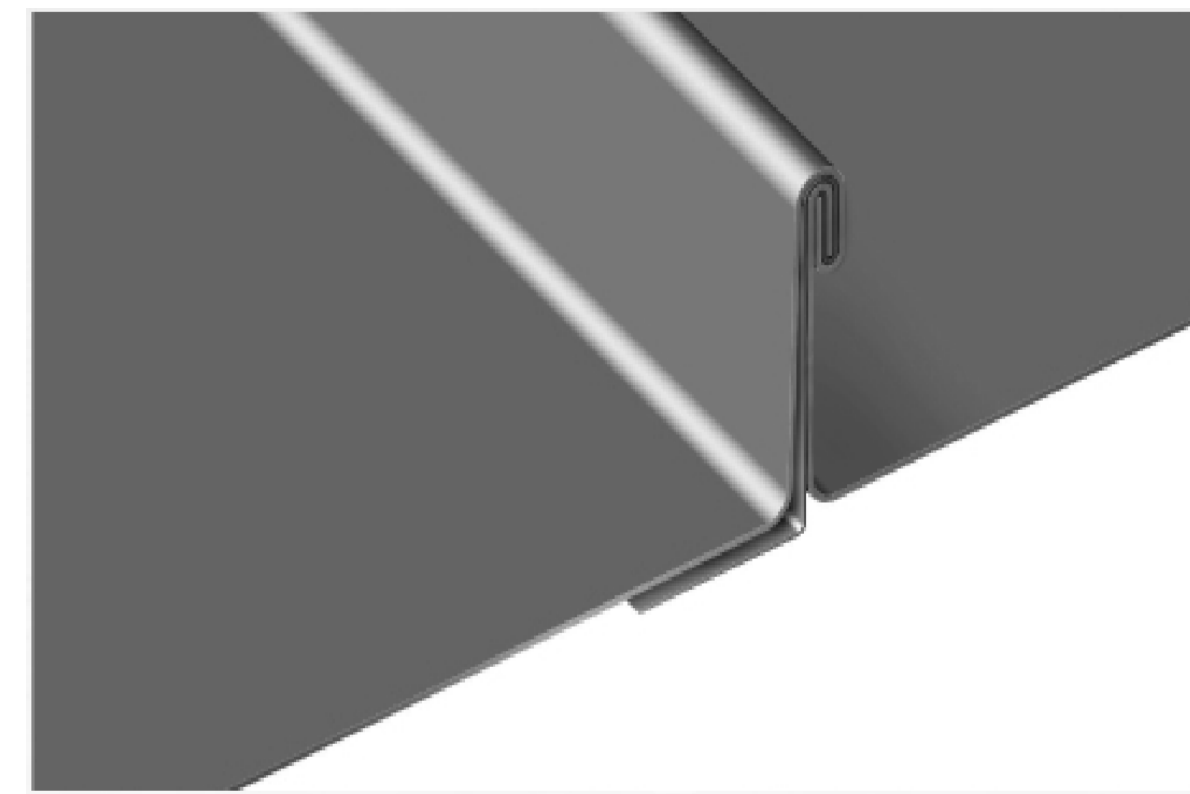
LUNOS eGO

Dimensions	
Heat Recovery Core Diameter	5.9 inches (150mm)
Heat Recovery Core Length	9.6 inches (243mm)
Minimum Wall Thickness	11.8 inches (300mm)
Interior Cover	9.3" x 8.5" x 2.5" (237 x 217 x 63 mm)
Exterior Cover	10.1" x 8.5" x 2.5" (257 x 217 x 63 mm)
Installation Tube Bore Diameter	6.37 inches (162mm)
Installation Tube Length	Installation tube may be cut to length suitable for each individual installation. The 18.7 inch tube may be cut to as short as 11.8 inches. If additional length is required, a 27 inch tube may be custom ordered.



6 HEAT RECOVERY VENT

SCALE: 1/4" = 1'-0" 0 2' 4' 6'

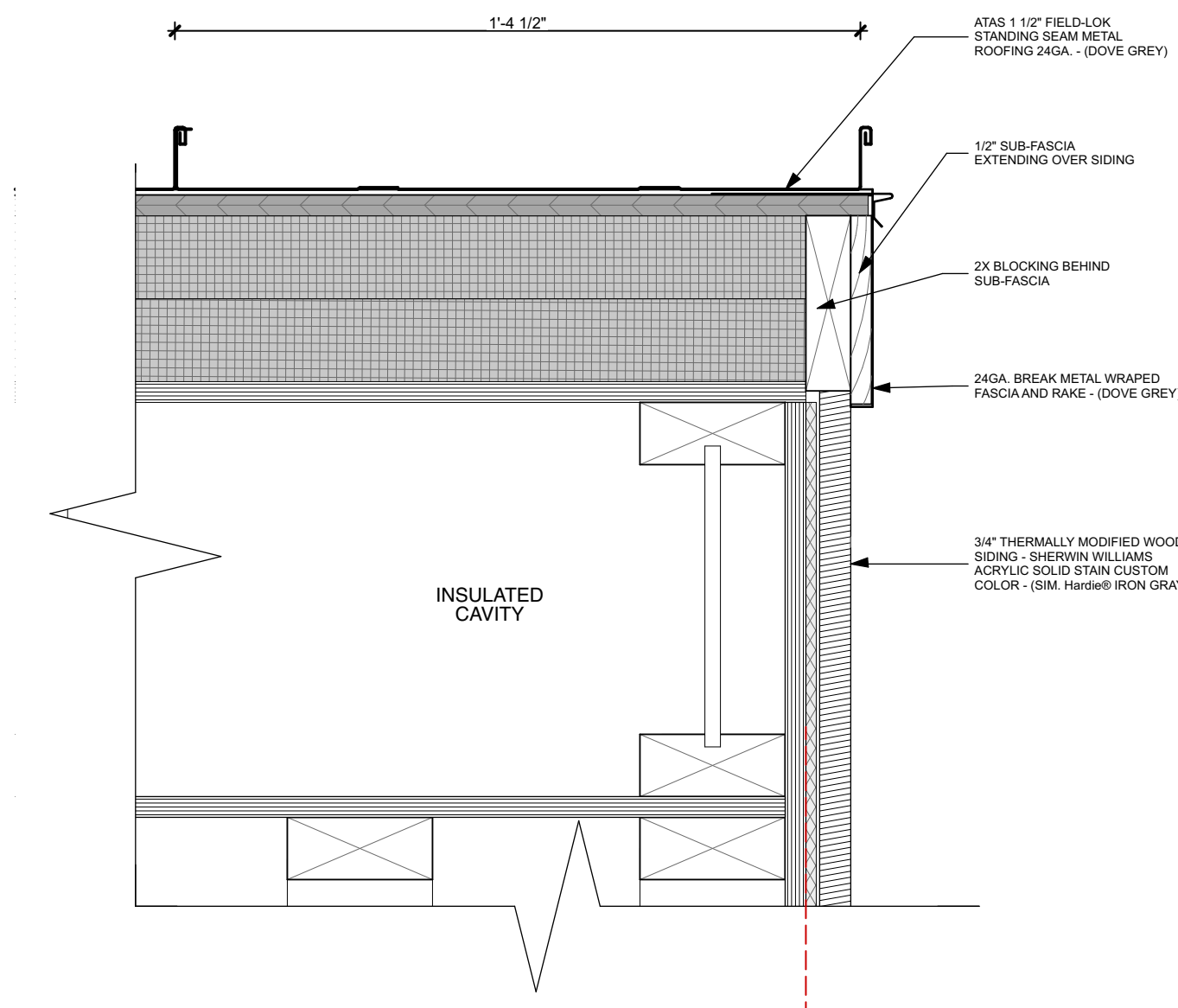


Dove Grey(13)

3 ATAS 1 1/2" FIELD-LOK STANDING SEAM METAL ROOFING 24GA.

SCALE: 3" = 1'-0"

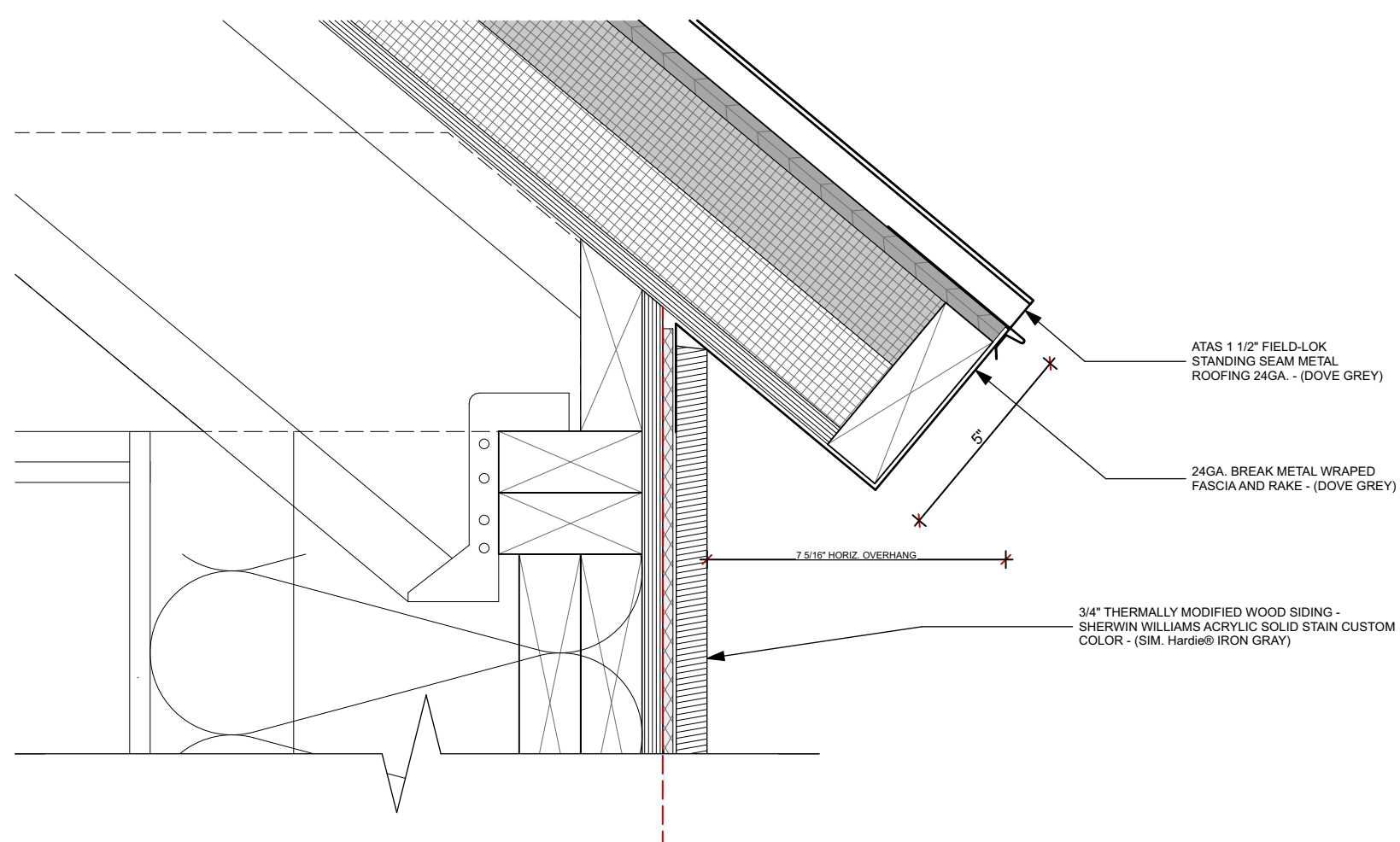
0 2' 4' 6'



2 RAKE DETAIL

SCALE: 3" = 1'-0"

0 2' 4' 6'



1 EAVE DETAIL

SCALE: 3" = 1'-0"

0 2' 4' 6'

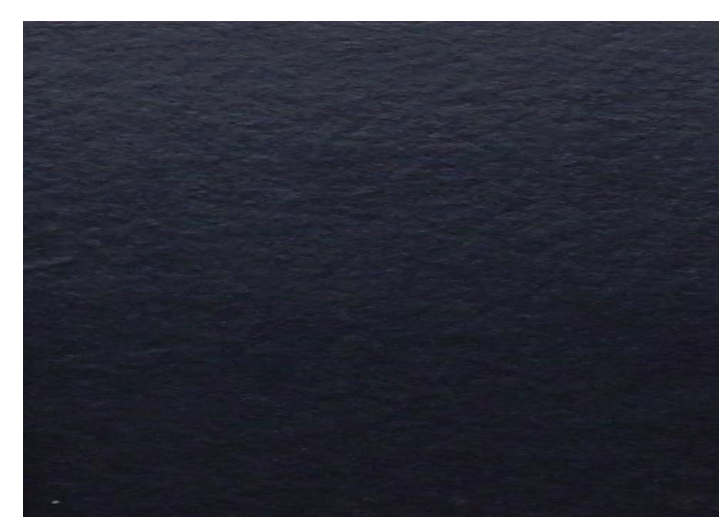


MARVIN WINDOWS & DOOR EXTERIOR CLADDING COLOR 'BRONZE'



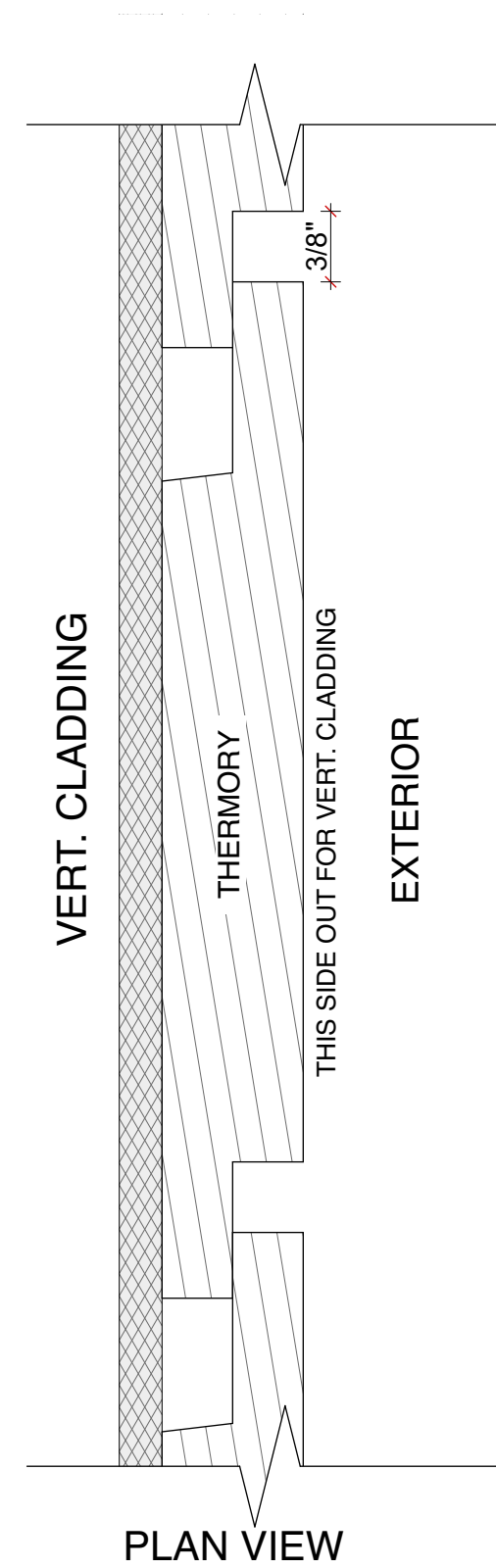
CLADDING COLOR SHERWIN WILLIAMS SW 7650

TYPE 2 - VERTICAL SIDING



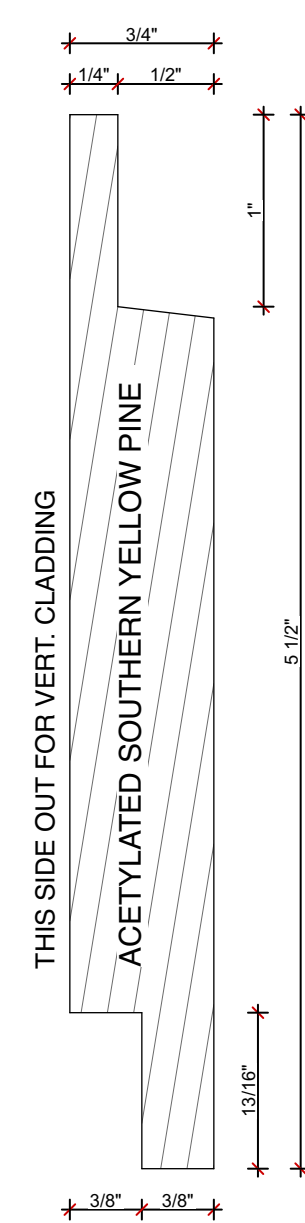
CLADDING COLOR TO MATCH (Hardie® Iron Gray)

TYPE 1 - HORIZONTAL SIDING - EXISTING (INCLUDED FOR REFERENCE)



5 CLADDING PROFILE

SCALE: 1" = 1'-0" 0 1/2" 1" 2"



4 CLADDING PROFILE

SCALE: 1" = 1'-0" 1/2" 1" 2"

PROJECT
ALLISON STUDIO ADDITION

236 Union Street,
Portsmouth, NH 03801

NOT FOR CONSTRUCTION

PROJECT ALL2
DATE 08/18/2023
REVISED 1

DRAWN BY RL/SS
PHASE For HDC Application

DETAILS - ROOF & SIDING

A-5.2



EXISTING VIEW FROM ACROSS THE STREET



EXISTING VIEW FROM ACROSS THE STREET



PROPOSED VIEW FROM ACROSS THE STREET WITH STUDIO ADDITION



PROPOSED VIEW FROM ACROSS THE STREET WITH STUDIO ADDITION

PROJECT
**ALLISON
STUDIO
ADDITION**

236 Union Street,
Portsmouth, NH 03801

NOT FOR CONSTRUCTION

PROJECT ALL2
DATE 08/18/2023
REVISED 1

DRAWN BY RL/SS
PHASE For HDC Application

EXISTING &
PROPOSED VIEWS
FROM STREET LEVEL

A-9.1



EXISTING CONDITIONS - AERIAL VIEW FROM NORTH



EXISTING CONDITIONS - AERIAL VIEW FROM SOUTH



PROPOSED STUDIO ADDITION - AERIAL VIEW FROM NORTH



PROPOSED STUDIO ADDITION - AERIAL VIEW FROM SOUTH

PROJECT
**ALLISON
STUDIO
ADDITION**

236 Union Street,
Portsmouth, NH 03801

NOT FOR CONSTRUCTION

PROJECT ALL2
DATE 08/18/2023
REVISED 1

DRAWN BY RL/SS
PHASE For HDC Application

EXISTING &
PROPOSED AERIAL
VIEWS

A-9.2