


PROPOSED REAR ELEVATION
 SCALE: 3/16" = 1'-0"

W I N D O W S C H E D U L E

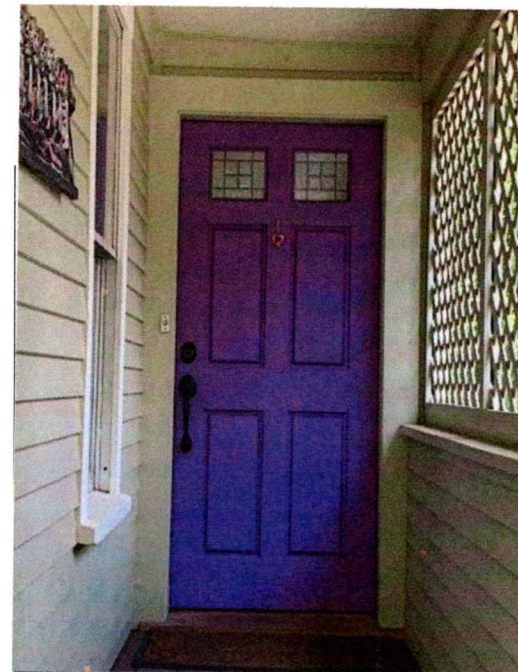
SYM.	UNIT	LITES	ROUGH OPENING	REMARKS	QUAN.
ADDITION					
A	ELDH 3248	6/6	2' 8 1/2" X 4' 0 1/4"	MARVIN INC., ELEVATE, Wood-Ultrex, Doublehung, 7/8" SDL w/ Low E Glazing, Cladding - "Stone White" Hardware to be chosen by Owner. Window Trim & Sill to match exist.	2
B	ITDH 3256	6/6	2' 8 1/2" X 4' 8 1/4"	DITTO	2

W I N D O W N O T E S

- SUBMIT FINAL WINDOW/DOOR ORDER & SHOP DRAWINGS TO ARCHITECT FOR APPROVAL BEFORE ORDERING & VERIFY EXIST RO'S



EXISTING REAR ELEVATION



REAR ENTRY DOOR

SCHEMATIC DESIGN RENOVATIONS, MORROW RESIDENCE 36 RICHMOND STREET	 ANNE WHITNEY ARCHITECT	Project: #2404	Date: 7/17/24
		Revisions:	

801 Irlington St, Suite 32
 Portsmouth NH 03801
 603-502-4387
 archwhit@aol.com

MARVIN ELEVATE™ COLLECTION
DOUBLE HUNG

MO (mm)	RO (mm)	FS (mm)	DLO (mm)							
3-0 (914)	1-10 (559)	1-10 1/2 (572)	1-3 11/16 (398)	3-0 (914)	2-2 (660)	2-2 1/2 (673)	1-7 11/16 (500)	2-6 (762)	2-8 (813)	2-10 (864)
3-0 1/4 (921)	1-9 1/2 (546)	2-1 1/2 (648)	1-3 11/16 (398)	3-0 1/4 (921)	2-1 1/2 (648)	2-1 1/2 (648)	1-7 11/16 (500)	2-6 1/2 (775)	2-8 1/2 (826)	2-10 1/2 (876)
2-11 3/4 (908)	1-9 1/2 (546)	2-1 1/2 (648)	1-3 11/16 (398)	2-11 3/4 (908)	1-7 11/16 (500)	2-1 1/2 (648)	1-7 11/16 (500)	2-5 1/2 (749)	2-7 1/2 (800)	2-9 1/2 (851)
1-1 11/16 (348)	1-3 11/16 (398)	1-7 11/16 (500)	1-3 11/16 (398)	1-1 11/16 (348)	1-3 11/16 (398)	1-7 11/16 (500)	1-3 11/16 (398)	1-11 11/16 (602)	2-1 11/16 (652)	2-3 11/16 (703)
(S.O. 1-8 x 2-10)	(S.O. 1-8 x 3-2)	(S.O. 2-0 x 2-10)	(S.O. 1-8 x 3-2)	(S.O. 1-8 x 2-10)	(S.O. 2-0 x 3-2)	(S.O. 2-0 x 3-2)	(S.O. 2-0 x 3-2)	(S.O. 2-4 x 2-10)	(S.O. 2-6 x 2-10)	(S.O. 2-8 x 2-10)
ELDH2236	ELDH2240	ELDH2236	ELDH2240	ELDH2236	ELDH2640	ELDH2640	ELDH2640	ELDH3036	ELDH3236	ELDH3436
3-4 (1016)	3-4 1/4 (1022)	3-3 3/4 (1010)	1-3 11/16 (398)	3-4 (1016)	3-4 1/4 (1022)	3-3 3/4 (1010)	1-3 11/16 (398)	3-4 (1016)	3-4 1/4 (1022)	3-3 3/4 (1010)
3-4 1/4 (1022)	3-3 3/4 (1010)	1-3 11/16 (398)	1-3 11/16 (398)	3-4 1/4 (1022)	3-3 3/4 (1010)	1-3 11/16 (398)	1-3 11/16 (398)	3-4 (1016)	3-4 1/4 (1022)	3-3 3/4 (1010)
(S.O. 1-8 x 3-6)	(S.O. 1-8 x 3-2)	(S.O. 2-0 x 3-2)	(S.O. 1-8 x 3-2)	(S.O. 1-8 x 3-6)	(S.O. 2-0 x 3-6)	(S.O. 2-0 x 3-6)	(S.O. 2-0 x 3-6)	(S.O. 2-4 x 3-2)	(S.O. 2-6 x 3-2)	(S.O. 2-8 x 3-2)
ELDH2244	ELDH2244	ELDH2644	ELDH2644	ELDH2244	ELDH2644	ELDH2644	ELDH2644	ELDH3040	ELDH3240	ELDH3440
3-8 (1176)	3-8 1/4 (1124)	3-7 3/4 (1111)	1-5 11/16 (449)	3-8 (1176)	3-8 1/4 (1124)	3-7 3/4 (1111)	1-5 11/16 (449)	3-8 (1176)	3-8 1/4 (1124)	3-7 3/4 (1111)
3-8 1/4 (1124)	3-7 3/4 (1111)	1-5 11/16 (449)	1-5 11/16 (449)	3-8 1/4 (1124)	3-7 3/4 (1111)	1-5 11/16 (449)	1-5 11/16 (449)	3-8 (1176)	3-8 1/4 (1124)	3-7 3/4 (1111)
(S.O. 1-8 x 3-6)	(S.O. 1-8 x 3-6)	(S.O. 2-0 x 3-6)	(S.O. 2-0 x 3-6)	(S.O. 1-8 x 3-6)	(S.O. 2-0 x 3-6)	(S.O. 2-0 x 3-6)	(S.O. 2-0 x 3-6)	(S.O. 2-4 x 3-6)	(S.O. 2-6 x 3-6)	(S.O. 2-8 x 3-6)
ELDH2244	ELDH2244	ELDH2644	ELDH2644	ELDH2244	ELDH2644	ELDH2644	ELDH2644	ELDH3044	ELDH3244	ELDH3444
4-0 (1219)	4-0 1/4 (1226)	3-11 3/4 (1213)	1-7 11/16 (500)	4-0 (1219)	4-0 1/4 (1226)	3-11 3/4 (1213)	1-7 11/16 (500)	4-0 (1219)	4-0 1/4 (1226)	3-11 3/4 (1213)
4-0 1/4 (1226)	3-11 3/4 (1213)	1-7 11/16 (500)	1-7 11/16 (500)	4-0 1/4 (1226)	3-11 3/4 (1213)	1-7 11/16 (500)	1-7 11/16 (500)	4-0 (1219)	4-0 1/4 (1226)	3-11 3/4 (1213)
(S.O. 1-8 x 3-10)	(S.O. 1-8 x 3-10)	(S.O. 2-0 x 3-10)	(S.O. 2-0 x 3-10)	(S.O. 1-8 x 3-10)	(S.O. 2-0 x 3-10)	(S.O. 2-0 x 3-10)	(S.O. 2-0 x 3-10)	(S.O. 2-4 x 3-10)	(S.O. 2-6 x 3-10)	(S.O. 2-8 x 3-10)
ELDH2248	ELDH2248	ELDH2648	ELDH2648	ELDH2248	ELDH2648	ELDH2648	ELDH2648	ELDH3048	ELDH3248	ELDH3448
4-4 (1321)	4-4 1/4 (1327)	4-3 3/4 (1314)	1-9 11/16 (551)	4-4 (1321)	4-4 1/4 (1327)	4-3 3/4 (1314)	1-9 11/16 (551)	4-4 (1321)	4-4 1/4 (1327)	4-3 3/4 (1314)
4-4 1/4 (1327)	4-3 3/4 (1314)	1-9 11/16 (551)	1-9 11/16 (551)	4-4 1/4 (1327)	4-3 3/4 (1314)	1-9 11/16 (551)	1-9 11/16 (551)	4-4 (1321)	4-4 1/4 (1327)	4-3 3/4 (1314)
(S.O. 1-8 x 4-2)	(S.O. 1-8 x 4-2)	(S.O. 2-0 x 4-2)	(S.O. 2-0 x 4-2)	(S.O. 1-8 x 4-2)	(S.O. 2-0 x 4-2)	(S.O. 2-0 x 4-2)	(S.O. 2-0 x 4-2)	(S.O. 2-4 x 4-2)	(S.O. 2-6 x 4-2)	(S.O. 2-8 x 4-2)
ELDH2252	ELDH2252	ELDH2652	ELDH2652	ELDH2252	ELDH2652	ELDH2652	ELDH2652	ELDH3052	ELDH3252	ELDH3452
4-8 (1422)	4-8 1/4 (1429)	4-7 3/4 (1416)	1-11 11/16 (602)	4-8 (1422)	4-8 1/4 (1429)	4-7 3/4 (1416)	1-11 11/16 (602)	4-8 (1422)	4-8 1/4 (1429)	4-7 3/4 (1416)
4-8 1/4 (1429)	4-7 3/4 (1416)	1-11 11/16 (602)	1-11 11/16 (602)	4-8 1/4 (1429)	4-7 3/4 (1416)	1-11 11/16 (602)	1-11 11/16 (602)	4-8 (1422)	4-8 1/4 (1429)	4-7 3/4 (1416)
(S.O. 1-8 x 4-6)	(S.O. 1-8 x 4-6)	(S.O. 2-0 x 4-6)	(S.O. 2-0 x 4-6)	(S.O. 1-8 x 4-6)	(S.O. 2-0 x 4-6)	(S.O. 2-0 x 4-6)	(S.O. 2-0 x 4-6)	(S.O. 2-4 x 4-6)	(S.O. 2-6 x 4-6)	(S.O. 2-8 x 4-6)
ELDH2256	ELDH2256	ELDH2656	ELDH2656	ELDH2256	ELDH2656	ELDH2656	ELDH2656	ELDH3056	ELDH3256	ELDH3456
5-0 (1524)	5-0 1/4 (1530)	4-11 3/4 (1518)	2-1 11/16 (652)	5-0 (1524)	5-0 1/4 (1530)	4-11 3/4 (1518)	2-1 11/16 (652)	5-0 (1524)	5-0 1/4 (1530)	4-11 3/4 (1518)
5-0 1/4 (1530)	4-11 3/4 (1518)	2-1 11/16 (652)	2-1 11/16 (652)	5-0 1/4 (1530)	4-11 3/4 (1518)	2-1 11/16 (652)	2-1 11/16 (652)	5-0 (1524)	5-0 1/4 (1530)	4-11 3/4 (1518)
(S.O. 1-8 x 4-10)	(S.O. 1-8 x 4-10)	(S.O. 2-0 x 4-10)	(S.O. 2-0 x 4-10)	(S.O. 1-8 x 4-10)	(S.O. 2-0 x 4-10)	(S.O. 2-0 x 4-10)	(S.O. 2-0 x 4-10)	(S.O. 2-4 x 4-10)	(S.O. 2-6 x 4-10)	(S.O. 2-8 x 4-10)
ELDH2260	ELDH2260	ELDH2660	ELDH2660	ELDH2260	ELDH2660	ELDH2660	ELDH2660	ELDH3060	ELDH3260	ELDH3460
5-4 (1626)	5-4 1/4 (1632)	5-3 3/4 (1619)	2-3 11/16 (703)	5-4 (1626)	5-4 1/4 (1632)	5-3 3/4 (1619)	2-3 11/16 (703)	5-4 (1626)	5-4 1/4 (1632)	5-3 3/4 (1619)
5-4 1/4 (1632)	5-3 3/4 (1619)	2-3 11/16 (703)	2-3 11/16 (703)	5-4 1/4 (1632)	5-3 3/4 (1619)	2-3 11/16 (703)	2-3 11/16 (703)	5-4 (1626)	5-4 1/4 (1632)	5-3 3/4 (1619)
(S.O. 1-8 x 5-2)	(S.O. 1-8 x 5-2)	(S.O. 2-0 x 5-2)	(S.O. 2-0 x 5-2)	(S.O. 1-8 x 5-2)	(S.O. 2-0 x 5-2)	(S.O. 2-0 x 5-2)	(S.O. 2-0 x 5-2)	(S.O. 2-4 x 5-2)	(S.O. 2-6 x 5-2)	(S.O. 2-8 x 5-2)
ELDH2264	ELDH2264	ELDH2664	ELDH2664	ELDH2264	ELDH2664	ELDH2664	ELDH2664	ELDH3064	ELDH3264	ELDH3464
5-8 (1727)	5-8 1/4 (1734)	5-7 3/4 (1721)	2-5 11/16 (754)	5-8 (1727)	5-8 1/4 (1734)	5-7 3/4 (1721)	2-5 11/16 (754)	5-8 (1727)	5-8 1/4 (1734)	5-7 3/4 (1721)
5-8 1/4 (1734)	5-7 3/4 (1721)	2-5 11/16 (754)	2-5 11/16 (754)	5-8 1/4 (1734)	5-7 3/4 (1721)	2-5 11/16 (754)	2-5 11/16 (754)	5-8 (1727)	5-8 1/4 (1734)	5-7 3/4 (1721)
(S.O. 1-8 x 5-6)	(S.O. 1-8 x 5-6)	(S.O. 2-0 x 5-6)	(S.O. 2-0 x 5-6)	(S.O. 1-8 x 5-6)	(S.O. 2-0 x 5-6)	(S.O. 2-0 x 5-6)	(S.O. 2-0 x 5-6)	(S.O. 2-4 x 5-6)	(S.O. 2-6 x 5-6)	(S.O. 2-8 x 5-6)
ELDH2268	ELDH2268	ELDH2668	ELDH2668	ELDH2268	ELDH2668	ELDH2668	ELDH2668	ELDH3068	ELDH3268 E	ELDH3468 E
6-0 (1829)	6-0 1/4 (1835)	5-11 3/4 (1822)	2-7 11/16 (805)	6-0 (1829)	6-0 1/4 (1835)	5-11 3/4 (1822)	2-7 11/16 (805)	6-0 (1829)	6-0 1/4 (1835)	5-11 3/4 (1822)
6-0 1/4 (1835)	5-11 3/4 (1822)	2-7 11/16 (805)	2-7 11/16 (805)	6-0 1/4 (1835)	5-11 3/4 (1822)	2-7 11/16 (805)	2-7 11/16 (805)	6-0 (1829)	6-0 1/4 (1835)	5-11 3/4 (1822)
(S.O. 1-8 x 5-10)	(S.O. 1-8 x 5-10)	(S.O. 2-0 x 5-10)	(S.O. 2-0 x 5-10)	(S.O. 1-8 x 5-10)	(S.O. 2-0 x 5-10)	(S.O. 2-0 x 5-10)	(S.O. 2-0 x 5-10)	(S.O. 2-4 x 5-10)	(S.O. 2-6 x 5-10)	(S.O. 2-8 x 5-10)
ELDH2272	ELDH2272	ELDH2672	ELDH2672	ELDH2272	ELDH2672	ELDH2672	ELDH2672	ELDH3072	ELDH3272 E	ELDH3472 E
6-4 (1930)	6-4 1/4 (1937)	6-3 3/4 (1924)	2-9 11/16 (856)	6-4 (1930)	6-4 1/4 (1937)	6-3 3/4 (1924)	2-9 11/16 (856)	6-4 (1930)	6-4 1/4 (1937)	6-3 3/4 (1924)
6-4 1/4 (1937)	6-3 3/4 (1924)	2-9 11/16 (856)	2-9 11/16 (856)	6-4 1/4 (1937)	6-3 3/4 (1924)	2-9 11/16 (856)	2-9 11/16 (856)	6-4 (1930)	6-4 1/4 (1937)	6-3 3/4 (1924)
(S.O. 1-8 x 6-2)	(S.O. 1-8 x 6-2)	(S.O. 2-0 x 6-2)	(S.O. 2-0 x 6-2)	(S.O. 1-8 x 6-2)	(S.O. 2-0 x 6-2)	(S.O. 2-0 x 6-2)	(S.O. 2-0 x 6-2)	(S.O. 2-4 x 6-2)	(S.O. 2-6 x 6-2)	(S.O. 2-8 x 6-2)
ELDH2276	ELDH2276	ELDH2676	ELDH2676	ELDH2276	ELDH2676	ELDH2676	ELDH2676	ELDH3076 E	ELDH3276 E	ELDH3476 E

