

JSA

ARCHITECTS
INTERIORS
PLANNERS

January 4, 2024

City of Portsmouth
Planning Department
1 Junkins Avenue
Portsmouth, NH 03801

Attn: Historic District Commission
Re: 64 Vaughan mall (LU-20-214)

The applicant (Novocure) for the renovation/addition to 64 Vaughan Mall is requesting a public hearing at the February 7, 2024 HDC meeting for the proposed penthouse addition. The Penthouse is noted on the attached drawings dated 12/15/23.

Respectfully Submitted,

A handwritten signature in black ink, appearing to read 'Mark K. Moeller', with a long horizontal line extending to the right.

Mark K. Moeller, AIA LEED AP
Principal

cc: Dean Smith, Novocure



HDC-1

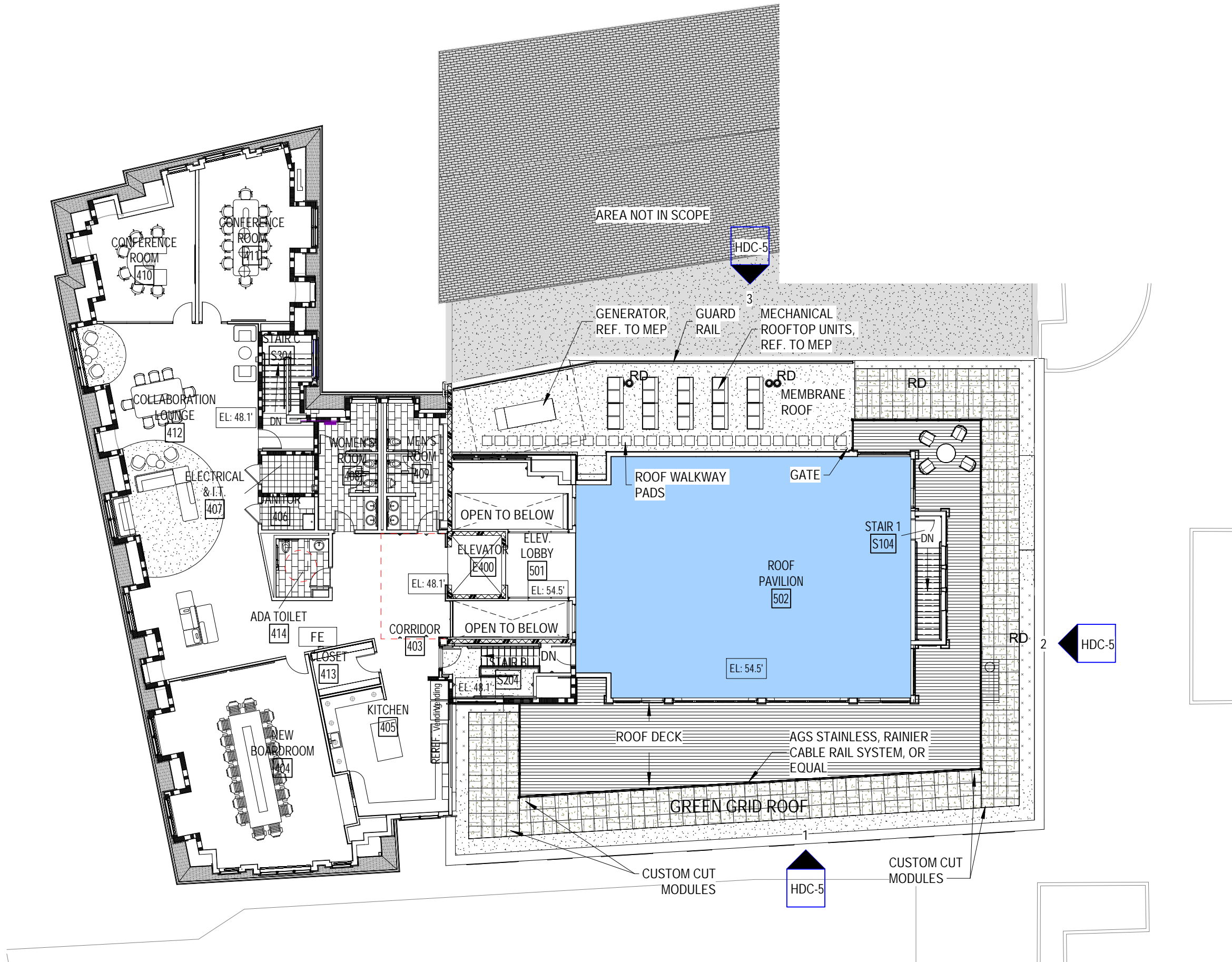
Aerial Perspective
Novocure Flagship at 64 Vaughan Mall

12/15/2023
SCALE:



ARCHITECTS
INTERIORS
PLANNERS

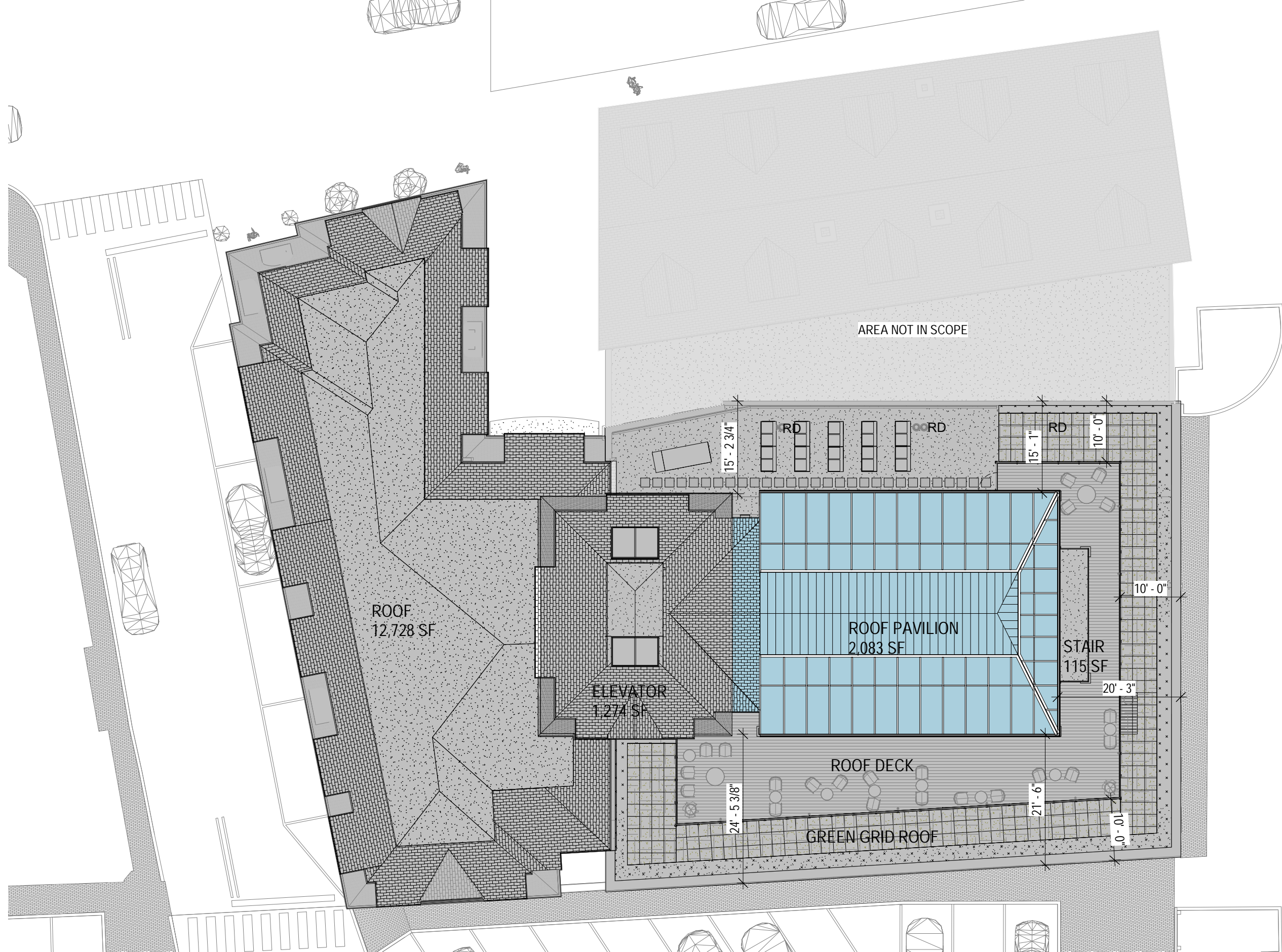
COPYRIGHT © 2023



HDC-2

FOURTH FLOOR PLAN
 Novocure Flagship at 64 Vaughan Mall

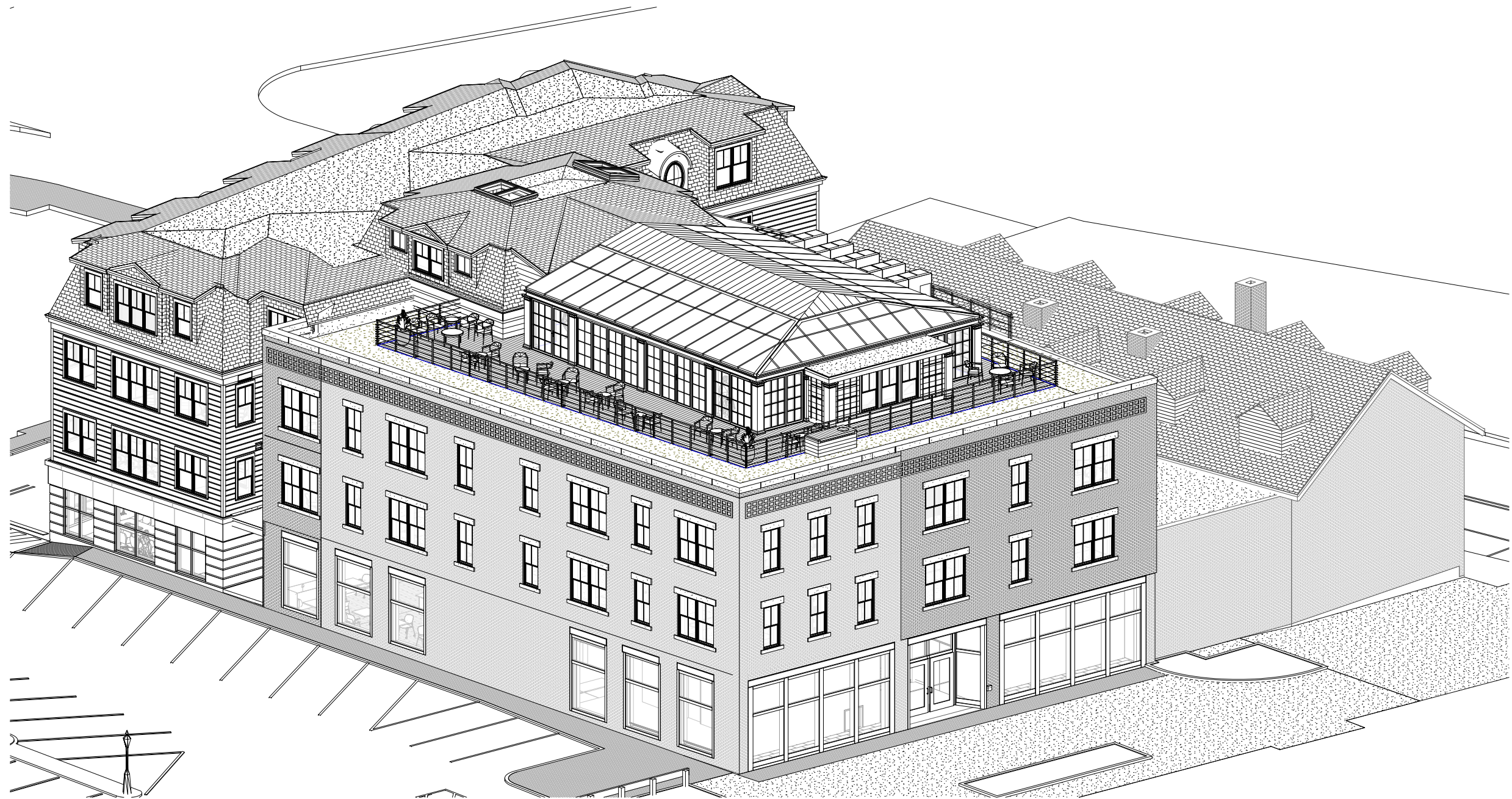
12/15/2023
 SCALE: 1/16" = 1'-0"



HDC-3

ROOF AREA- PAVILION
 Novocure Flagship at 64 Vaughan Mall

12/15/2023
 SCALE: 1/16" = 1'-0"



HDC-4

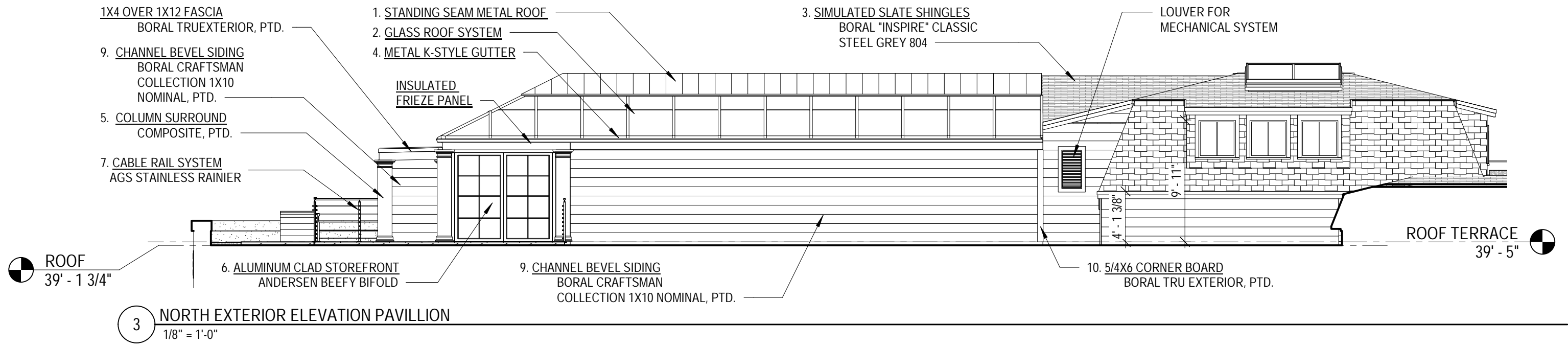
SOUTHEAST AXONOMETRIC - PROPOSED PAVILLION
Novocure Flagship at 64 Vaughan Mall

12/15/2023
SCALE:

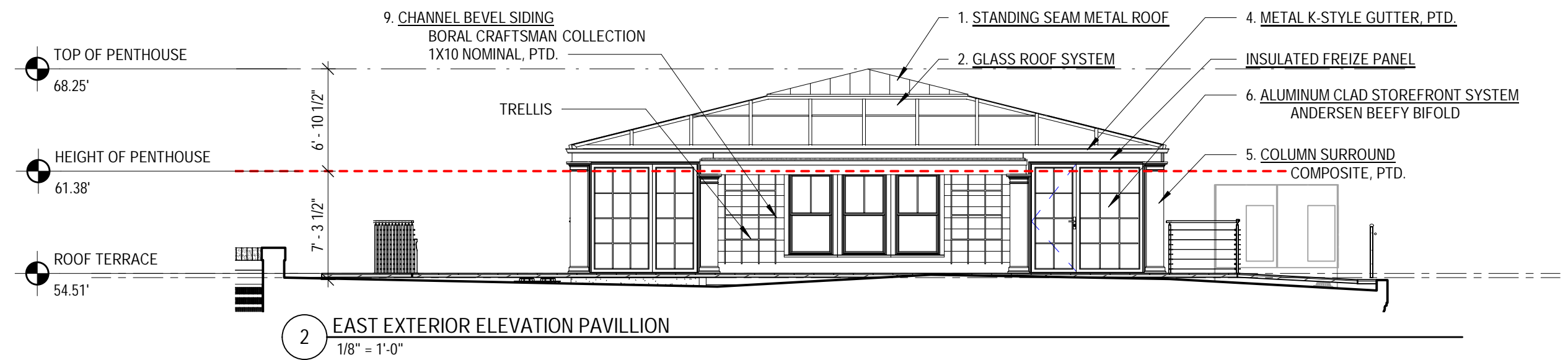


ARCHITECTS
INTERIORS
PLANNERS

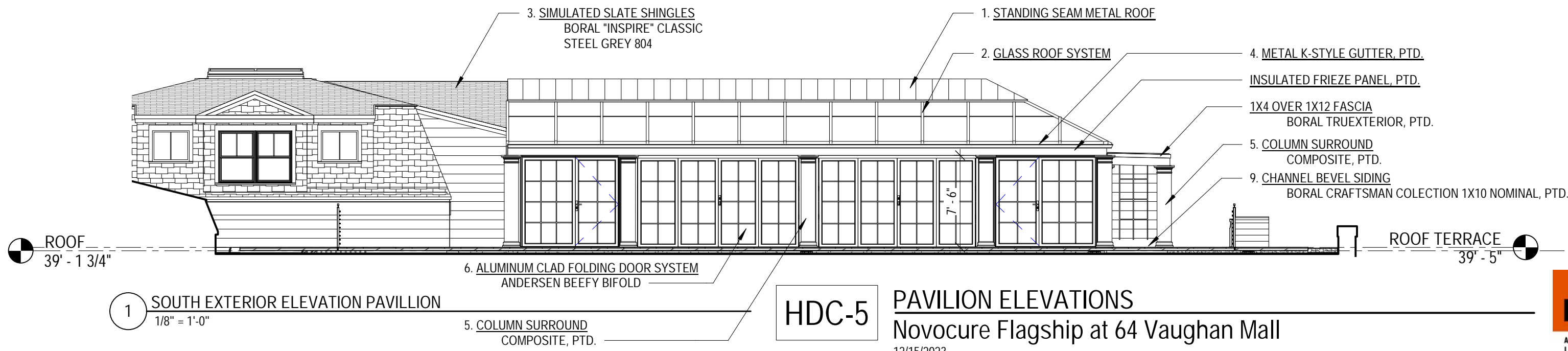
COPYRIGHT © 2023



3 NORTH EXTERIOR ELEVATION PAVILLION
1/8" = 1'-0"



2 EAST EXTERIOR ELEVATION PAVILLION
1/8" = 1'-0"



1 SOUTH EXTERIOR ELEVATION PAVILLION
1/8" = 1'-0"

HDC-5 PAVILION ELEVATIONS
Novocure Flagship at 64 Vaughan Mall
12/15/2023
SCALE: 1/8" = 1'-0"



1 NORTH EXTERIOR ELEVATION PAVILLION - COLOR
1/8" = 1'-0"



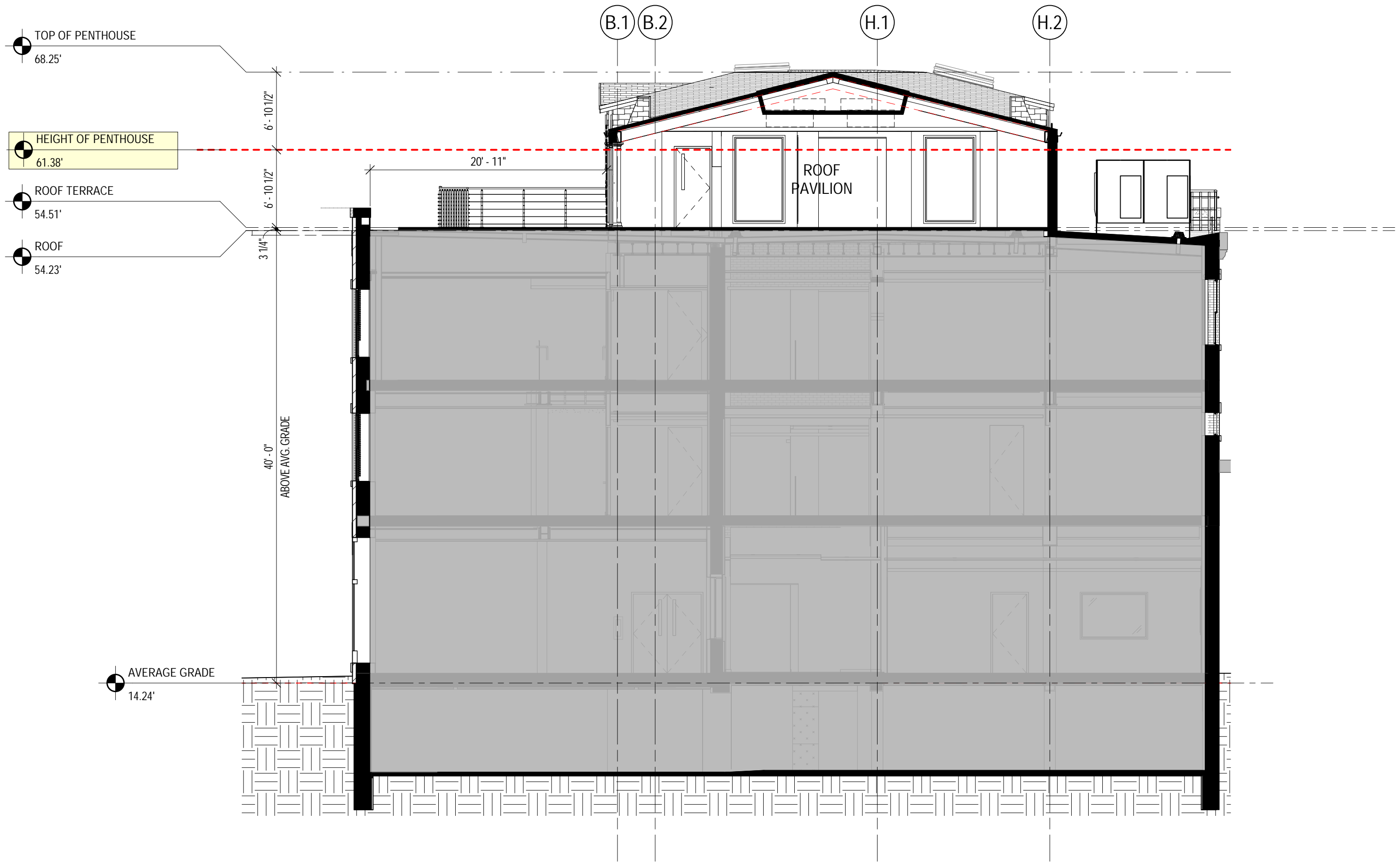
2 EAST EXTERIOR ELEVATION PAVILLION - COLOR
1/8" = 1'-0"



3 SOUTH EXTERIOR ELEVATION PAVILLION - COLOR
1/8" = 1'-0"

HDC-5.5 PAVILION COLOR ELEVATIONS
Novocure Flagship at 64 Vaughan Mall
12/15/2023
SCALE: 1/8" = 1'-0"





HDC-6

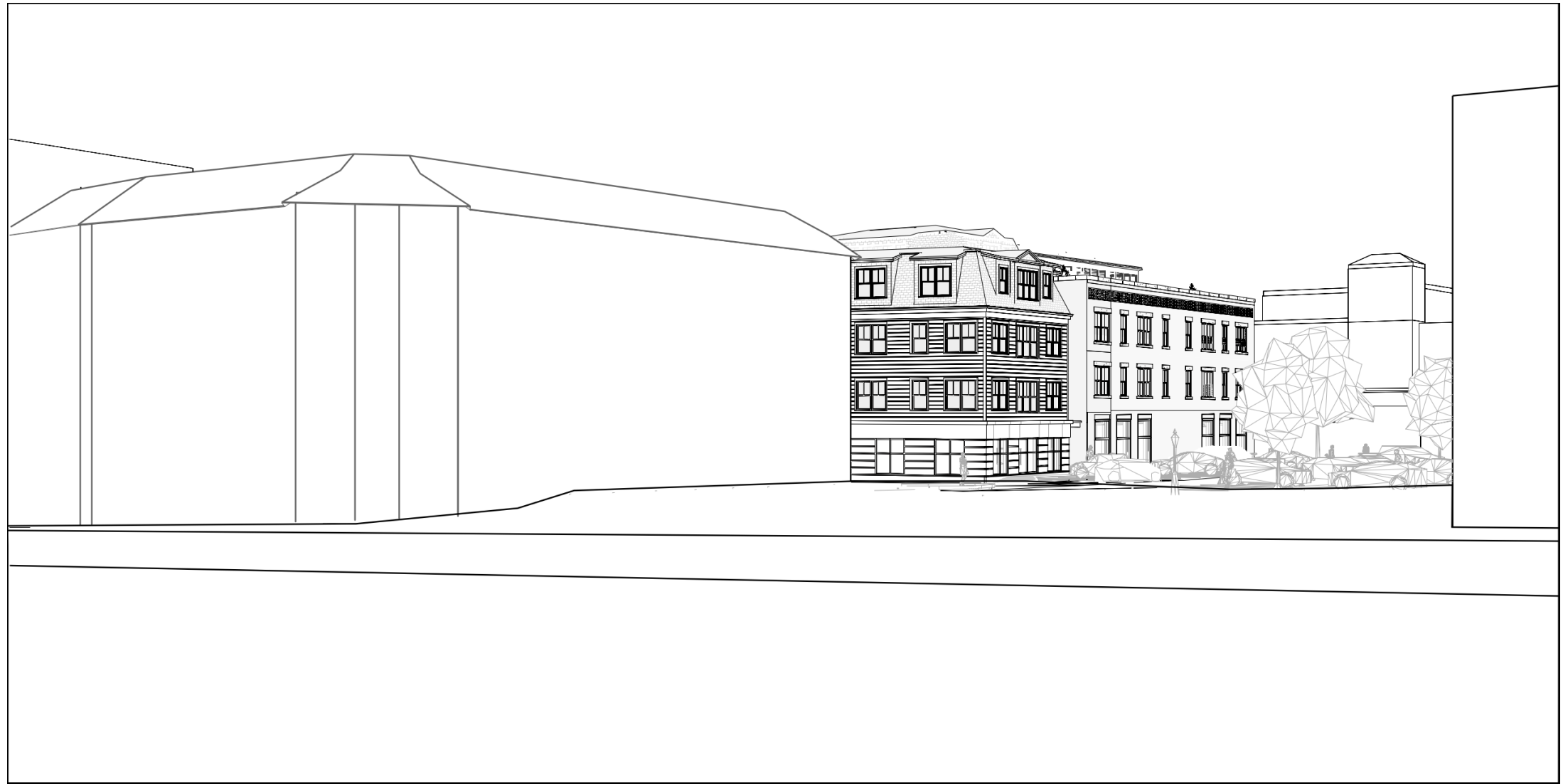
ENLARGED BUILDING SECTION
 Novocure Flagship at 64 Vaughan Mall

12/15/2023
 SCALE: 1/8" = 1'-0"



ARCHITECTS
 INTERIORS
 PLANNERS

COPYRIGHT © 2023



HDC-7

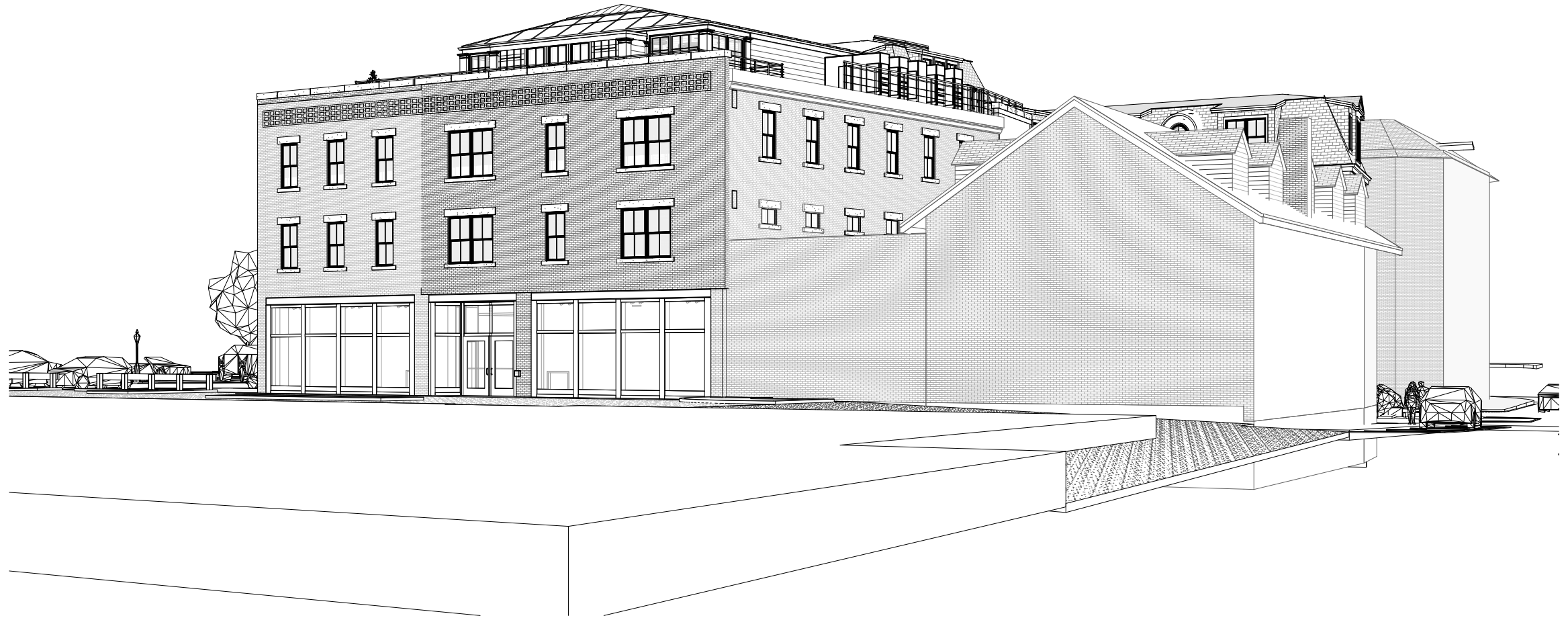
BRIDGE STREET PARKING LOT
Novocure Flagship at 64 Vaughan Mall

12/15/2023
SCALE:



ARCHITECTS
INTERIORS
PLANNERS

COPYRIGHT © 2023



HDC-8

HANOVER AND FLEET STREET
Novocure Flagship at 64 Vaughan Mall

12/15/2023
SCALE:



ARCHITECTS
INTERIORS
PLANNERS

COPYRIGHT © 2023



HDC-9

WORTH LOT VIEW 01
Novocure Flagship at 64 Vaughan Mall

12/15/2023
SCALE:



ARCHITECTS
INTERIORS
PLANNERS

COPYRIGHT © 2023



HDC-10

WORTH LOT VIEW 02
Novocure Flagship at 64 Vaughan Mall

12/15/2023
SCALE:



ARCHITECTS
INTERIORS
PLANNERS

COPYRIGHT © 2023

ROOF GLAZING SYSTEM
U-FACTOR 0.27, SHGC 0.24

STEEL BEAM WITH
INTUMESCENT PAINT

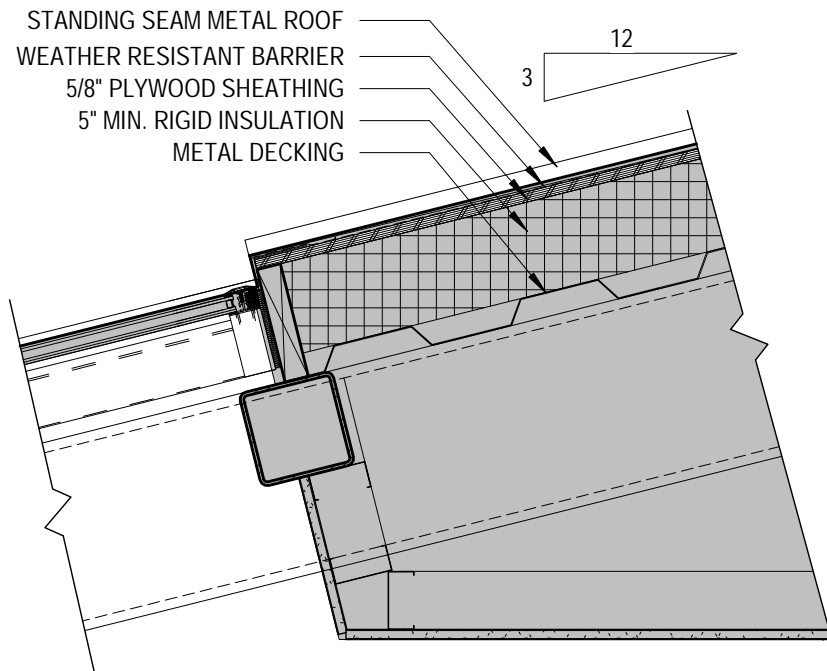
STEEL TUBE WITH
INTUMESCENT PAINT,
SEE STRUCT. DWGS.

METAL K-STYLE
GUTTER, PTD.

INSULATED
FRIEZE

COMPOSITE
PILASTER,
BEYOND, PTD

FOLDING GLASS DOOR SYSTEM
ANDERSEN BEEFY BIFOLD, OR
EQUAL, U-FACTOR 0.25



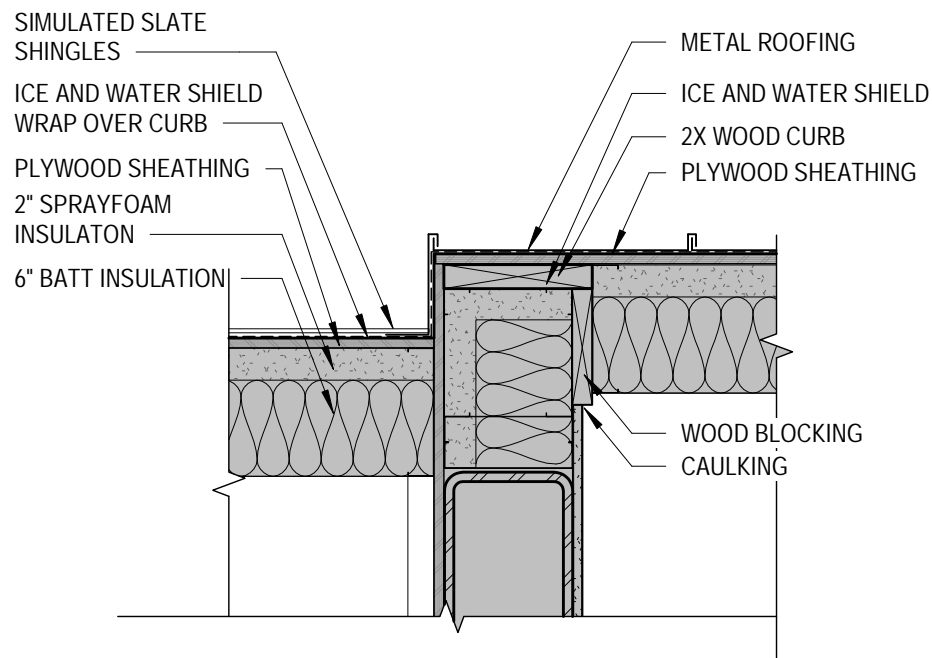
SIMULATED SLATE
SHINGLES
ICE AND WATER SHIELD
WRAP OVER CURB
PLYWOOD SHEATHING
2" SPRAYFOAM
INSULATON
6" BATT INSULATION

METAL ROOFING
ICE AND WATER SHIELD
2X WOOD CURB
GLASS ROOF SYSTEM

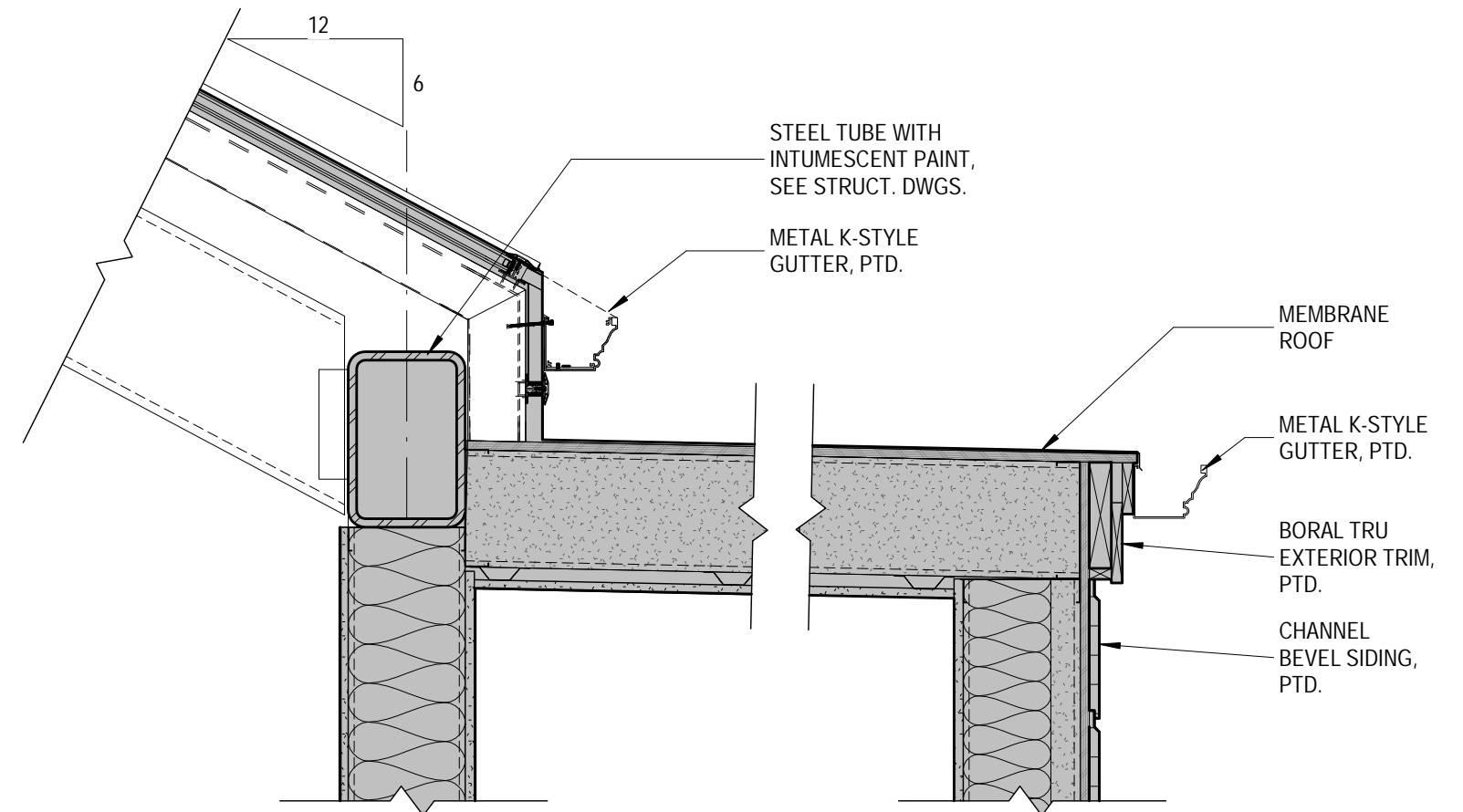
WOOD BLOCKING
CAULKING

4 PAVILION ROOF GABLE END DETAIL- HDC
1" = 1'-0"

1 ROOF DETAIL -TYPICAL EAVE-Andersen
1" = 1'-0"



3 PAVILION ROOF GABLE END DETAIL- Standing Seam- HDC
1" = 1'-0"



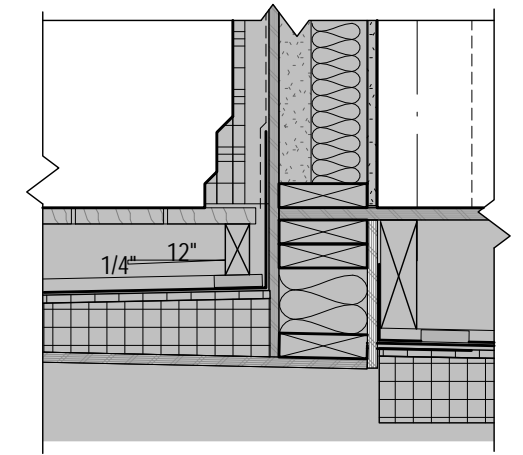
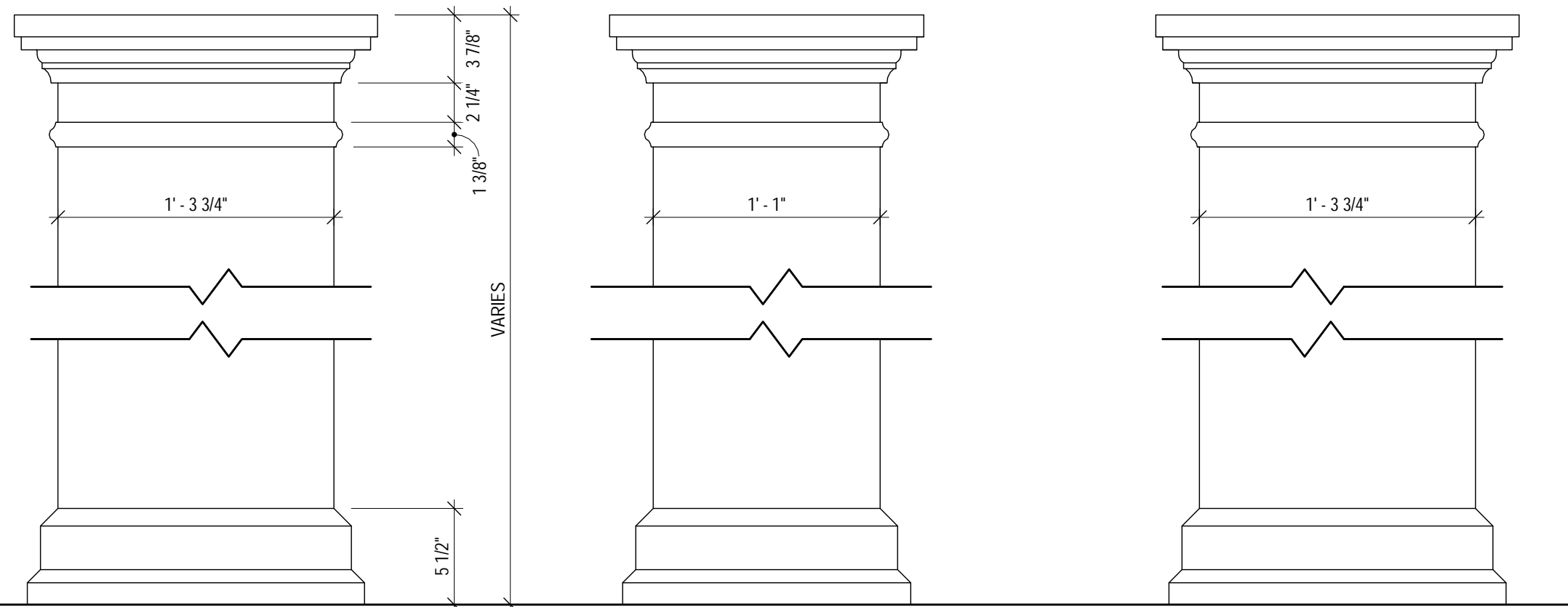
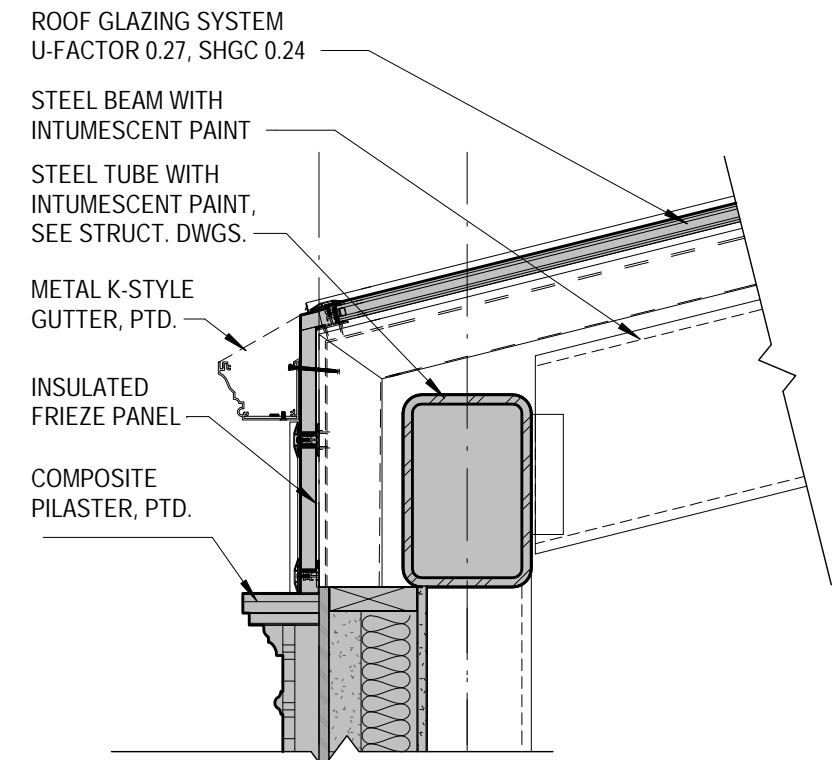
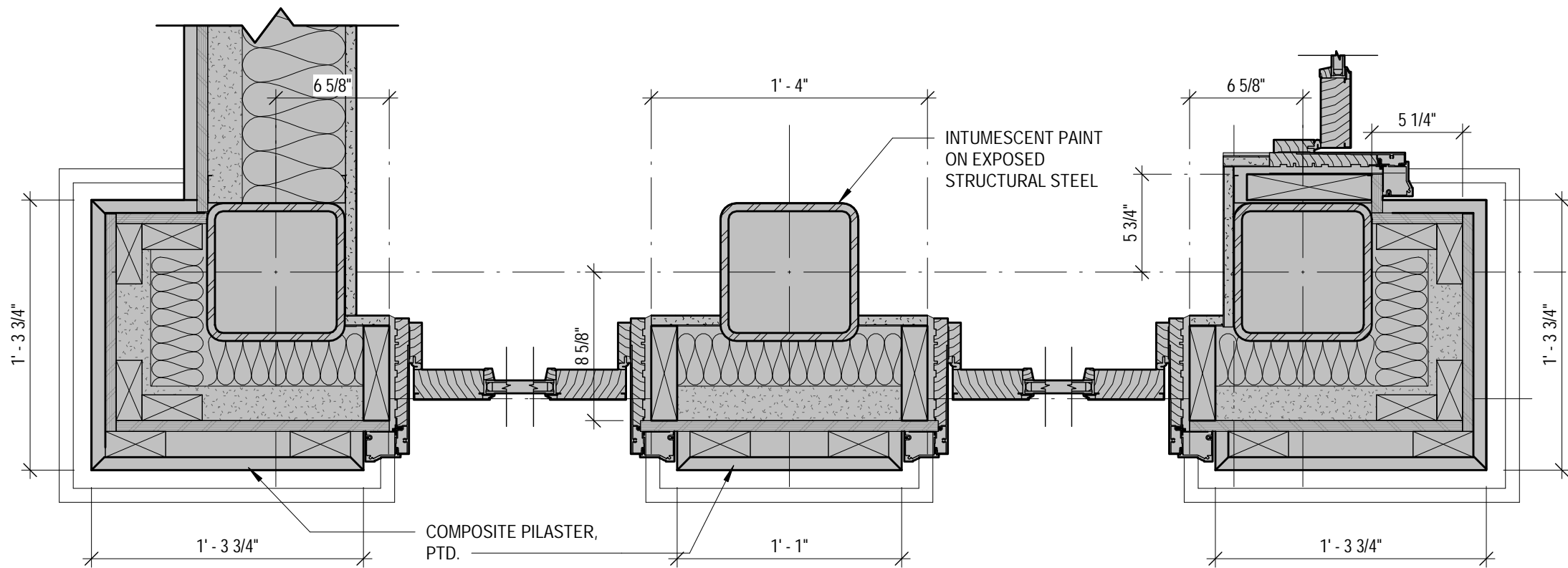
2 ROOF DETAIL -Eave over Stair 1
1" = 1'-0"

HDC-11 DETAILS
Novocure Flagship at 64 Vaughan Mall
12/15/2023
SCALE: 1" = 1'-0"



ARCHITECTS
INTERIORS
PLANNERS

COPYRIGHT © 2023



2 ROOF DETAIL - TYPICAL EAVE @ COLUMN
1" = 1'-0"

1 PAVILION DOOR JAMB AND PILASTER DETAIL - Andersen
1 1/2" = 1'-0"

HDC-12 DOOR JAMB AND PILASTER DETAIL
Novocure Flagship at 64 Vaughan Mall
12/15/2023
SCALE: As indicated



1. STANDING SEAM METAL ROOFING



2. ALUMINUM/GLASS STRUCTURE

HDC-13

MATERIALS

Novocure Flagship at 64 Vaughan Mall

12/15/2023

SCALE:



ARCHITECTS
INTERIORS
PLANNERS

COPYRIGHT © 2023

Steel Grey



Specifications

CLASSIC SLATE - Single Body										
Class A - Item #84721	Class C - Item #84718	Exposure	Width	Height	Finish	Grade	Spans	Panel	Trunk	
		Max 7.5" / Min 6.0" (max) Min 6.0" (min)	12"	36"	Weight	1.8 lbs	30 lbs	240 sq ft	1,800 sq ft	42,000 sq ft
					Pieces	1	20	300	1,800	28,000
					Weights	—	—	3.4	44	1,000
					Spans	—	—	—	90	100
					Fields	—	—	—	—	18

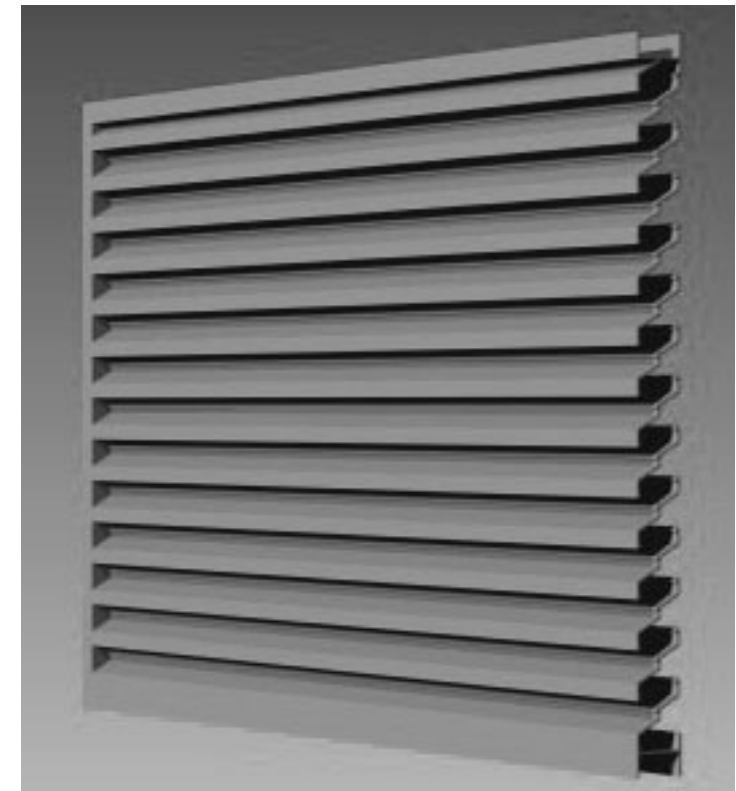
CLASSIC SLATE - STARTER						CLASSIC SLATE - HIP AND RIDGE					
Class B - Item #84721	Class C - Item #84718	Width	Height	Weight / Piece	Pieces / Bundle	Class B - Item #84721	Class C - Item #84718	Width	Length	Exposure	Preferred Pkgs.
		12"	12.5"	4 lbs	20 lbs			12"	36"	12.5"	100 sq ft

TEST	TESTING PERFORMED	RESULTS FOR
Fire Rating	In accordance with UL 790 / ASTM E 1363	Class F or Class C Fire Rated System (depending on system)
Wind Rating	In accordance with UL 2218	Class 4
Impact Resistance (Hail)	In accordance with ASTM D 3100 (ASTM D 3100 - 12) - 1/2" - 1.5"	100% with no cracks or breaks and with no loss of material, chipping or delamination
Wind Uplift (Suction)	In accordance with ASTM D 3100 (ASTM D 3100 - 12) - 1.5"	100% with no cracks or breaks and with no loss of material, chipping or delamination
Impact Resistance (Foot)	In accordance with ASTM D 3100 (ASTM D 3100 - 12) - 1.5"	No signs of damage or cracking after 200' impact
Water Penetration	In accordance with ASTM D 3100 (ASTM D 3100 - 12) - 1.5"	No water penetration
Water Resistance	In accordance with ASTM D 3100 (ASTM D 3100 - 12) - 1.5"	No water penetration
Water Resistance	In accordance with ASTM D 3100 (ASTM D 3100 - 12) - 1.5"	No water penetration

3. SIMULATED SLATE SHINGLE
BORAL INSPIRE CLASSIC SLATE
STEEL GREY 804



4. PAINTED METAL K STYLE GUTTER



LOUVER FOR MECHNANICAL SYSTEM



5. CORNER POST COLUMN SURROUND
INSULATED ALUMINUM PANEL-BLACK



BEEFY BIFOLD DOORS
Architectural Collection



BRING THE OUTDOORS IN

Maximize large openings with Beefy Bifold doors from Andersen. With a robust design, their heavy-duty hardware system supports larger door panels without sacrificing ease of operation, opening a space to the outdoors effortlessly.

KEY FEATURES

- Up to 40' wide and 13' 6" tall, with panels up to 5' wide
- Wood, aluminum or aluminum wood-clad construction
 - All aluminum and aluminum wood-clad panels have rails and stiles that are 3 1/4" wide and a thickness of 3 3/4"
 - All wood panels up to 10' tall have stiles that are 3 1/4" wide with a bottom rail height of 7 1/4" and a thickness of 2 1/4"
- Center-pivoting design with internal shoot-bolt locking hardware
- Panels stack perpendicular to the wall to maximize the size of the opening
- Door jamb is less than 4" wide and can fit into almost all existing wall conditions
- Variety of glass options
- High-quality AAMA 2605 finish

FLUSH SILL

Flush sill with a built-in drainage system allows for a seamless transition while offering protection from the weather. The track is a corrosion-resistant stainless steel U-channel that only sits 3/4" above the finished floor.



CONFIGURATIONS

- Vary the number of panels to fit any opening
- Use as a pass-through window for a kitchen or bar area
- Corner bifold without a meeting post creates a dramatic design
- Individually-operable doors can be built into most door configurations for more exit options. Operable doors are great for frequent entries and exits, without needing to unlock the entire system.



6. FOLDING DOORS

ANDERSEN- ALUMINUM CLAD WOOD

HDC-15

MATERIALS

Novocure Flagship at 64 Vaughan Mall

12/15/2023
SCALE:



RAINIER

Cable Railing




- Choose from an array of fitting options
- Factory prepared cable/fitting assemblies available for quick installation


7. CABLE RAILING

POWDER COATED ALUMINUM- BLACK



dassoXTR Fused Bamboo® is manufactured using dasso's patented process, creating an extremely dense, durable solid product for several different types of exterior applications. dassoXTR Fused Bamboo® has a Class A Fire Rating and zero VOCs. It's the sustainable, natural alternative to traditional wood.

 **END MATCHED** - Tongue & Grooved Ends
Allows installation on or off the joists

 **REVERSIBLE FACES** - unlimited design possibilities
Install smooth or reeded face up

- » Dimensionally stable (no expand & contract)
- » No VOCs
- » Class A Fire Rated
- » Installs 35% faster
- » Over 100 million SqFt installed worldwide

2 COLORS AVAILABLE



8. DECKING

FUSED BAMBOO- CLASSIC ESPRESSO COLOR

HDC-16

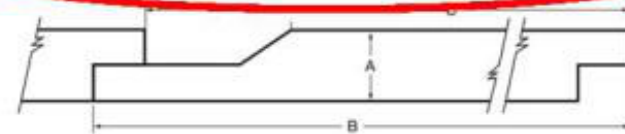
MATERIALS

Novocure Flagship at 64 Vaughan Mall

12/15/2023
SCALE:



Nominal Size	Actual Thickness (A)	Actual Width (B)	Reveal (C)
1 x 6	11/16"	5-1/2"	4-31/32"
1 x 8	11/16"	7-1/2"	6-31/32"
1 x 10	11/16"	9-1/2"	8-31/32"



5/8 Trim Sizes		1X Trim Sizes		5/4 Trim Sizes		2X Trim Sizes	
Nominal	Actual	Nominal	Actual	Nominal	Actual	Nominal	Actual
—	—	—	—	—	—	2 x 2	1-1/2" x 1-1/2"
—	—	1 x 3	3/4" x 2-1/2"	5/4 x 3	1" x 2-1/2"	—	—
5/8 x 4	5/8" x 3-1/2"	1 x 4	3/4" x 3-1/2"	5/4 x 4	1" x 3-1/2"	2 x 4	1-1/2" x 3-1/2"
—	—	1 x 5	3/4" x 4-1/2"	5/4 x 5	1" x 4-1/2"	—	—
5/8 x 6	5/8" x 5-1/2"	1 x 6	3/4" x 5-1/2"	5/4 x 6	1" x 5-1/2"	2 x 6	1-1/2" x 5-1/2"
5/8 x 8	5/8" x 7-1/4"	1 x 8	3/4" x 7-1/4"	5/4 x 8	1" x 7-1/4"	2 x 8	1-1/2" x 7-1/4"
5/8 x 10	5/8" x 9-1/4"	1 x 10	3/4" x 9-1/4"	5/4 x 10	1" x 9-1/4"	2 x 10	1-1/2" x 9-1/4"
5/8 x 12	5/8" x 11-1/4"	1 x 12	3/4" x 11-1/4"	5/4 x 12	1" x 11-1/4"	2 x 12	1-1/2" x 11-1/4"

9. HORIZONTAL SIDING AND TRIM- PAINTED BORAL TRU EXTERIOR CRAFTSMANS COLLECTION CHANNEL BEVEL 1X10

TruExterior® Trim is reversible with woodgrain on one side and a smooth finish on the reverse. Available in a 16' length.

Reversible Smooth/Woodgrain Finish

*Please see TruExterior® Siding & Trim Limited Warranties and Product Data Sheets for proprietary test results, located at TruExterior.com.

10. BORAL TRU EXTERIOR TRIM

HDC-17

MATERIALS

Novocure Flagship at 64 Vaughan Mall

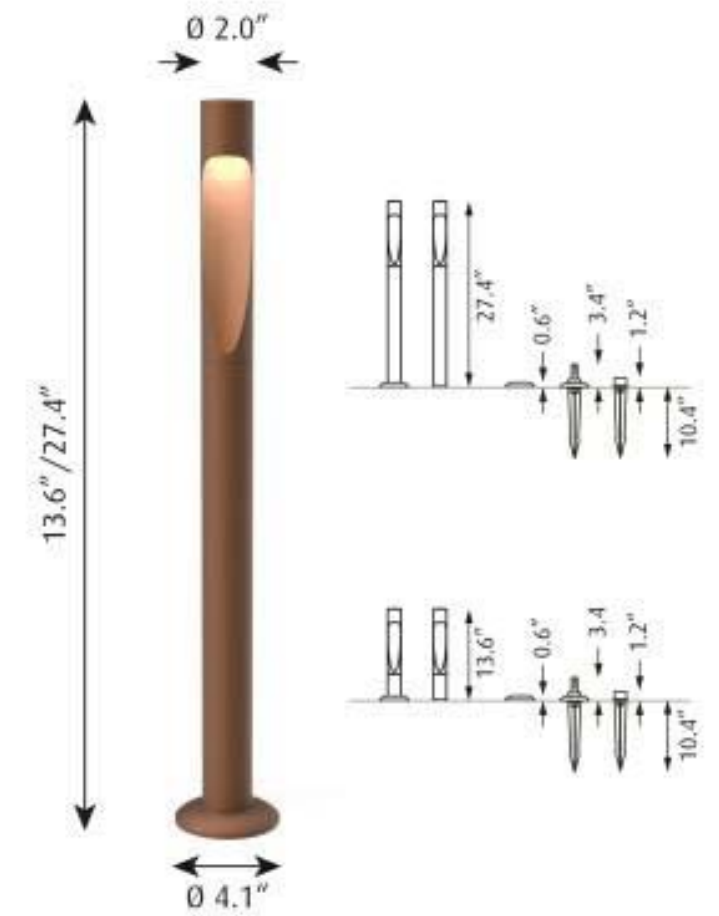
12/15/2023
SCALE:



COPYRIGHT © 2023

Product description

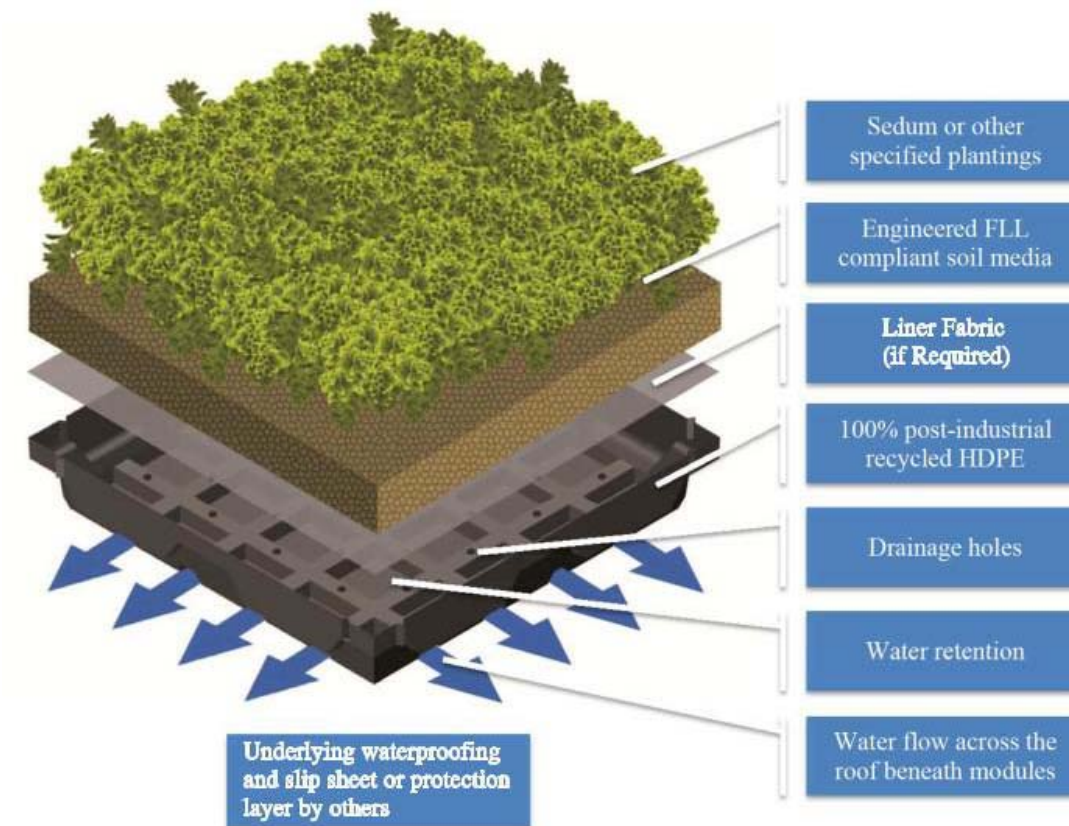
Beautifully crafted slender post with a carved surface that is gently illuminated. Top section conceals downward facing LED. A horizontal connection line underline the two parts of the bollard. Available in two heights, 13.6 IN and 27.4 IN. Available in three different mounting methods: with a base plate for anchoring onto decks; an anchor for casting in new concrete pad; or a spike for placing in soil or gravel. Part of a family.



Variant options

Dimension	Color	Mounting	Light source	Lumen	Voltage frequency	Class
LONG	● Black texture	Anchor w/o power supply	LED 2700K	-	24V	-
SHORT	● Corten color	Base w/o power supply	LED 3000K	215		III
	● Natural paint aluminum	Spike w/o power supply	LED 4000K	248		
				252		
				291		

12. DECK LIGHTING BOLLARD



11. GREEN GRID VEGETATIVE ROOF SYSTEM

HDC-18

MATERIALS

Novocure Flagship at 64 Vaughan Mall

12/15/2023

SCALE: