



City of Portsmouth  
Planning Department & Historic District Commission  
1 Junkins Avenue  
Portsmouth, NH 03801

May 20, 2024, rev.

Re: **1 Congress Street (LU-22-12)**  
SECOND REQUEST FOR A ONE-YEAR EXTENSION of HDC Approval

Dear Ms Ruedig & Historic District Commission members:

The Historic District Commission granted approval for renovations and additions to 1 Congress Street on August 3, 2022. This approval initially expired on August 3, 2023. A first one-year extension was granted, expiring on August 3<sup>rd</sup>, 2024. This request is for a second one-year extension.

The project was initially delayed pending coordination with City for offsite improvements. Construction start is now delayed pending coordination of improvements in coordination with the City and with the owner's recent acquisition of abutting JJ Newberry property at 15 Congress Street.

A second one-year extension of the HDC approval is respectfully requested.

Very truly yours,

A handwritten signature in black ink that reads "Tracy S. Kozak".

Tracy S. Kozak  
Arcove Architects, Principal

Cc: Mark McNabb & Marie Bodi; McNabb Properties Ltd.

DRAWING INDEX - REVISED SHEETS

H5.01 COVER  
H5.13 ROOF PLAN  
H5.14 FIRST FLOOR PLAN

H5.17 ROOF AREAS CALCULATIONS

H5.20 ROOF HEIGHT DETAIL - HAVEN CT  
H5.21 ELEVATION - CONGRESS STREET  
H5.22 ELEVATION - HIGH STREET  
H5.23 ELEVATION - HAVEN COURT  
H5.24 ELEVATION - REAR (WEST) ALLEY

H5.31 AXONOMETRIC  
H5.33 VINGNETTE - HIGH ST FROM CONGRESS ST  
H5.34 VINGNETTE - HIGH ST FROM STARBUCKS  
H5.35 VINGNETTE - HAVEN CT FROM LADD ST  
H5.36 VINGNETTE - HIGH ST AT LADD ST & HAVEN CT  
H5.37 VINGNETTE - HAVEN COURT AT NEWBERRY'S

H5.55 MATERIALS - STOREFRONT & LIGHTING SCONCE

**MINOR REVISIONS TO PREVIOUSLY APPROVED APPLICATION**

UPDATES ASSOCIATED WITH CHANGE OF BUILDING USE FROM HOTEL & RESTAURANT, TO MIXED-USE: APARTMENTS, OFFICE, & RETAIL:

- A. FILLED IN DRIVE-THROUGH UNDERPASS ON HIGH STREET WITH RETAIL STOREFRONT. CHANGE FOLDING LIFTING STOREFRONTS ON HAVEN COURT TO FIXED STOREFRONTS.
- B. BUILDING HEIGHT INCREASE BY 11 INCHES, TO ALIGN UPPER FLOORS WITH EXISTING ATTACHED BUILDING FOR HANDICAPPED ACCESSIBILITY
- C. RELOCATED ELEVATOR OVER-RUN AND STAIR ACCESS TO ROOF
- D. ADJUST SETBACK ROOF EDGE BEHIND ROOF DECK ON HIGH STREET (STRAIGHTENED AND MOVED FORWARD)
- E. OMIT 3 WINDOWS ON HAVEN COURT AT EGRESS STAIR (FOR TRASH CHUTE BEHIND WALL).
- F. SOLAR ARRAY AND MECHANICAL ROOFTOP EQUIPMENT SHOWN
- G. ADDED WALL SCONCE LIGHT FIXTURES TO PIERS BETWEEN STOREFRONTS
- H. ADJUST LOCATIONS OF DOORS, WINDOWS ON REAR WEST ALLEY FACADE TO COORDINATE WITH REVISED PROGRAM.
- I. REDUCE WIDTH AND ALIGN DOOR AND WINDOWS AT WALL BEHIND REAR RECESSED ROOF DECK (AT SOUTH WALL BEHIND CONGRESS STREET BUILDINGS).
- J. CHANGE TWO SINGLE DOORS AT MAIN ENTRANCE ON HIGH STREET TO ONE SINGLE DOOR



# ONE CONGRESS STREET RENOVATION & ADDITION

ONE MARKET SQUARE, LLC



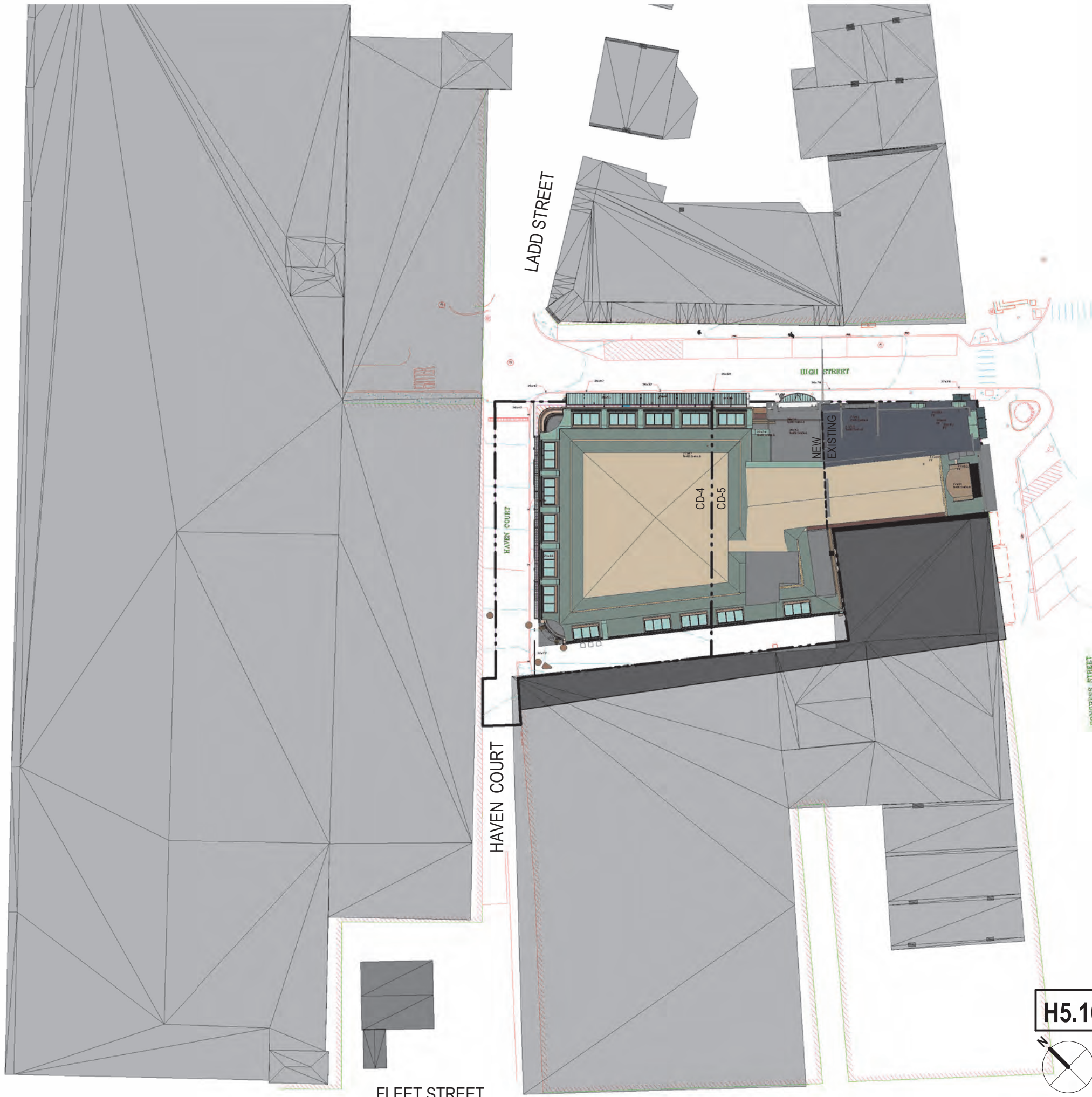
**HISTORIC DISTRICT COMMISSION -  
PUBLIC HEARING  
November, 2022**

COMPLETE COMPILED SET - MAY 20, 2024

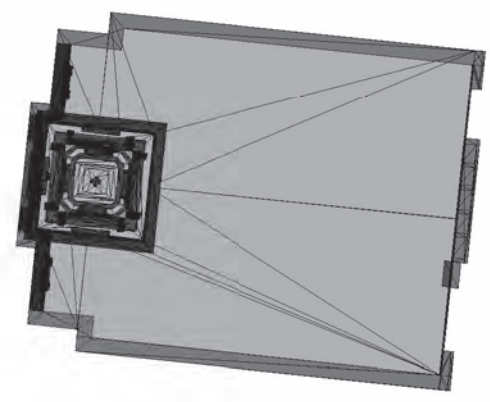
**H5.01 COVER**  
**1 CONGRESS STREET**  
SCALE:  
10/14/2022



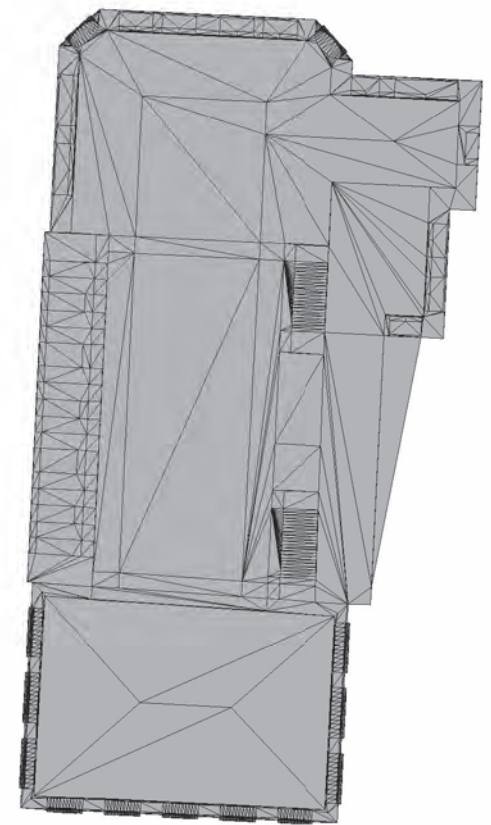




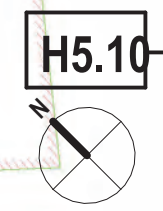
PLEASANT STREET



CHURCH STREET



CONGRESS STREET



**SITE PLAN**  
**1 CONGRESS STREET**

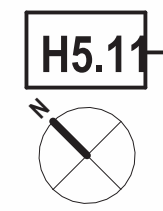
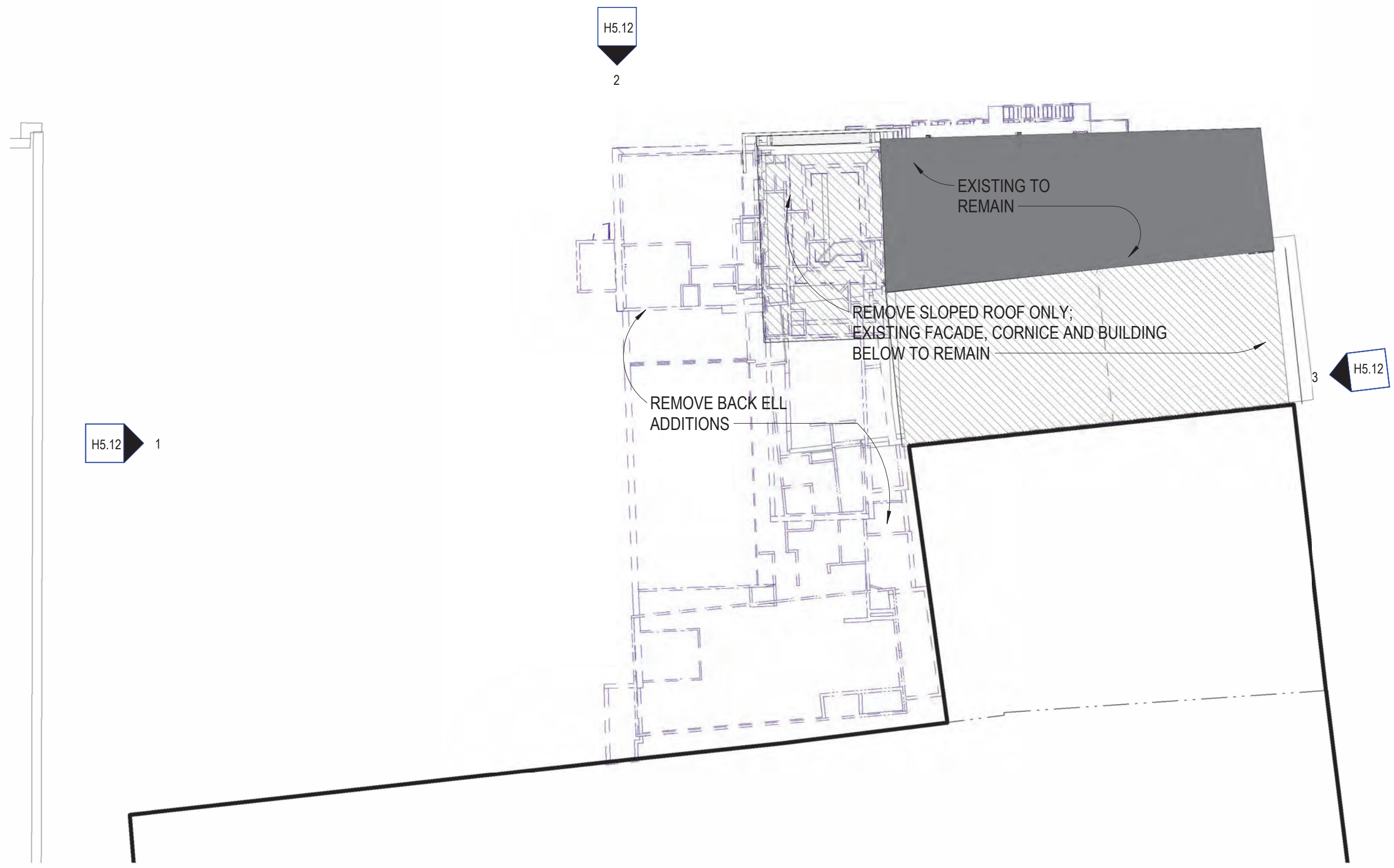
SCALE: 1" = 40'-0"  
8/03/2022

GRAPHIC SCALE: 1" = 40'-0"



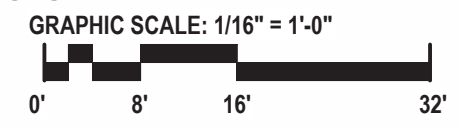
FLEET STREET



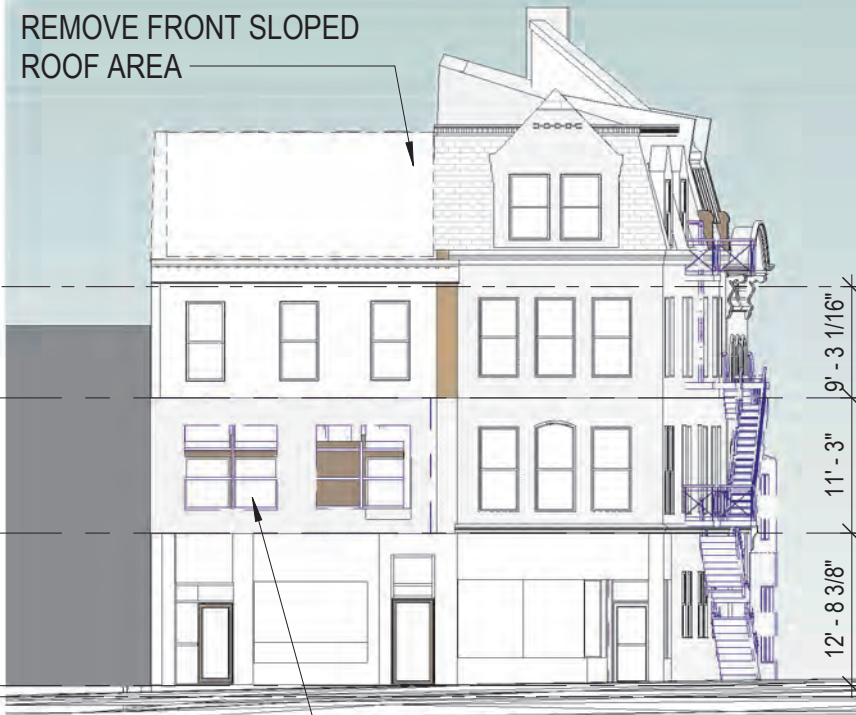


**H5.11** **DEMOLITION PLAN**  
**1 CONGRESS STREET**

SCALE: 1/16" = 1'-0"  
8/03/2022

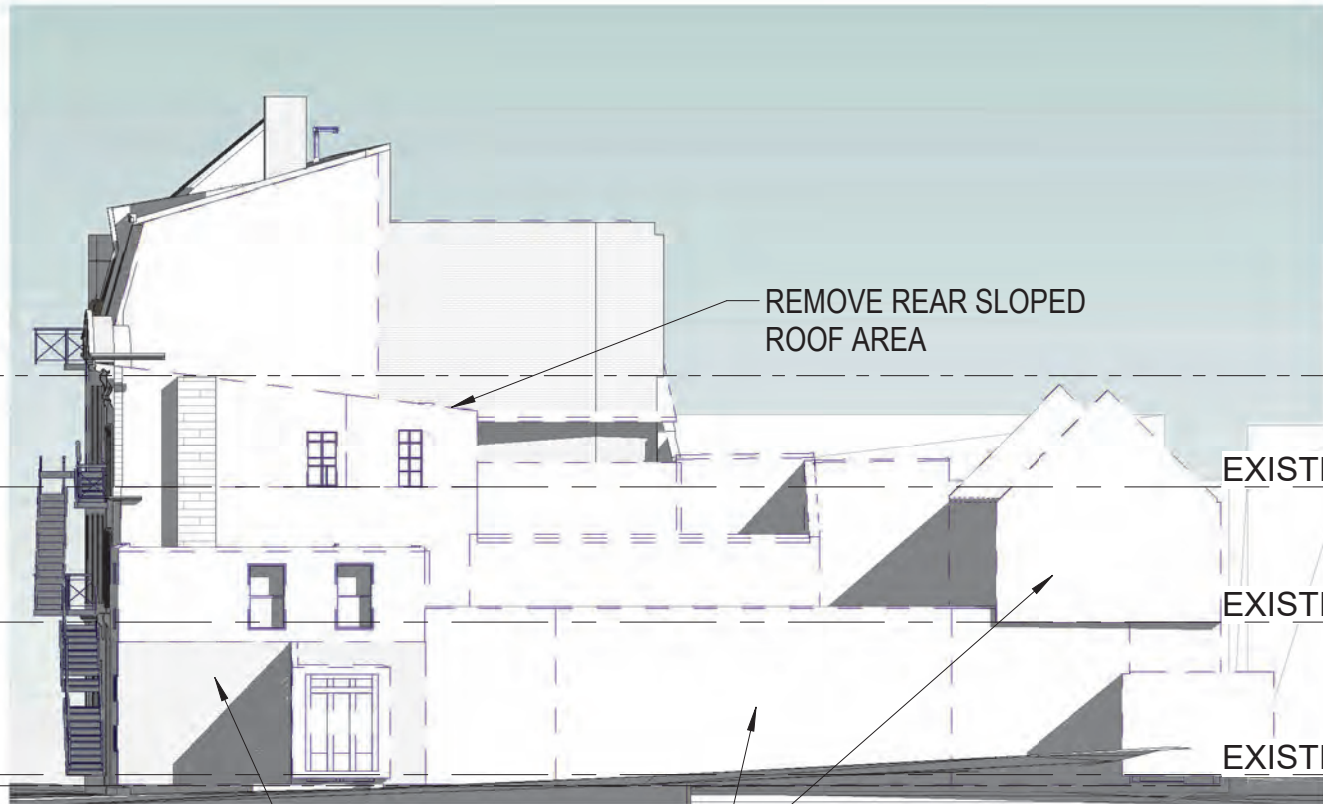






**3 PROPOSED ELEVATION - CONGRESS ST**  
1/16" = 1'-0"

EXISTING ATTIC 61' - 3 3/4"  
 EXISTING-Level 3 52' - 0 5/8"  
 EXISTING-Level 2 40' - 9 5/8"  
 EXISTING-Level 1 28' - 1 1/4"  
 AVG GRADE CD5 EXISTING\* 27' - 2 1/8"



**1 REAR DEMOLITION ELEVATION - NW - HAVEN COURT**  
1/16" = 1'-0"

ATTIC 61' - 3 3/4"  
 EXISTING-Level 3 52' - 0 5/8"  
 EXISTING-Level 2 40' - 9 5/8"  
 EXISTING-Level 1 28' - 1 1/4"



**2 SIDE DEMOLITION ELEVATION - NE - HIGH STREET**  
1/16" = 1'-0"

AVG GRADE CD5 EXISTING\* 27' - 2 1/8"

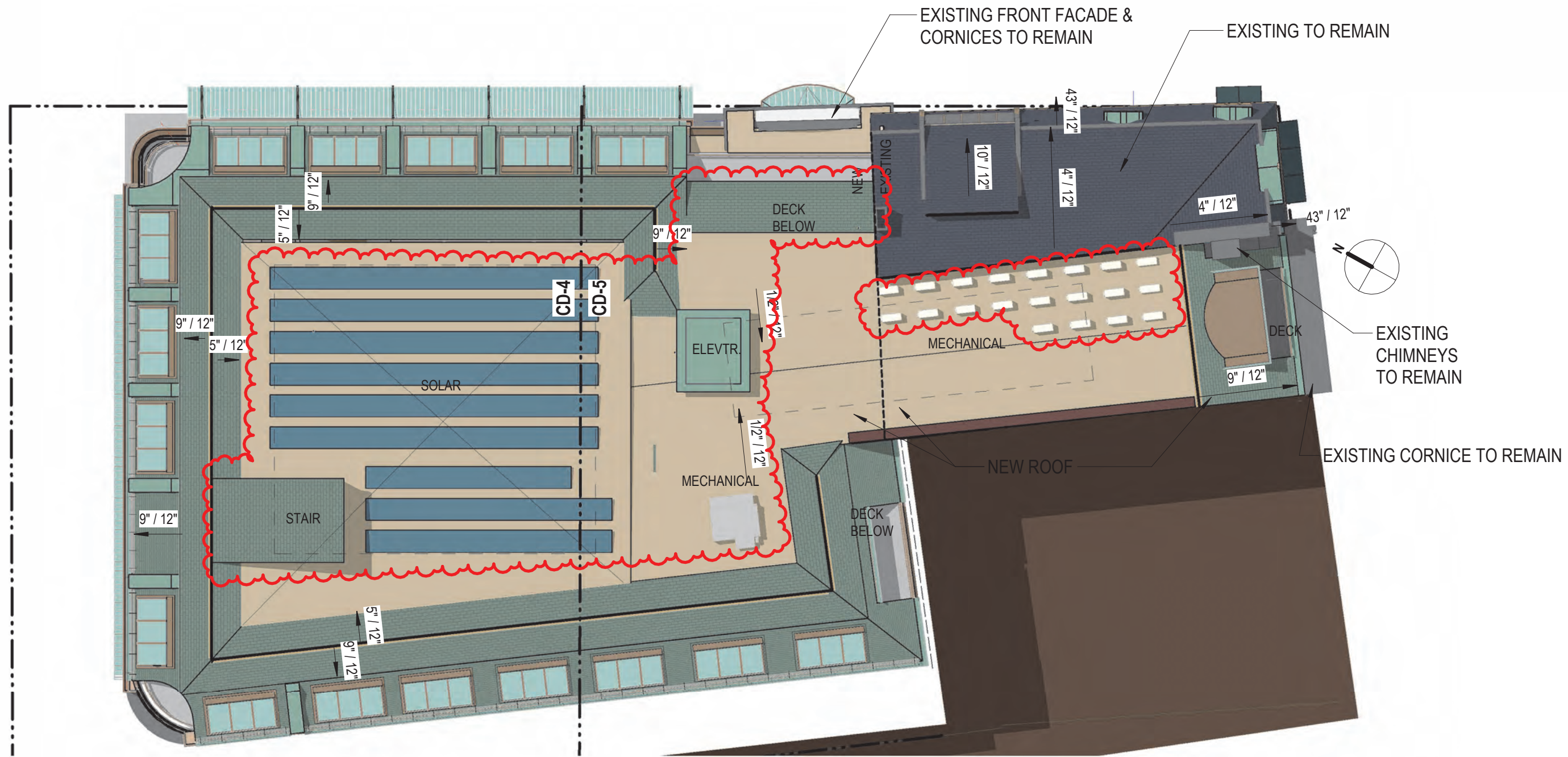
REMOVE REPLACED STOREFRONTS  
 REMOVE FIRE ESCAPES  
 REMOVE AREA OF REPLACED STOREFRONT  
 REMOVE REAR ADDITIONS

**H5.12 DEMOLITION ELEVATIONS**  
**1 CONGRESS STREET**

SCALE: 1/16" = 1'-0"  
8/03/2022





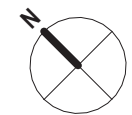


H5.13

**ROOF PLAN**  
**1 CONGRESS STREET**

SCALE: 1/16" = 1'-0"  
10/14/2022

GRAPHIC SCALE: 1/16" = 1'-0"





BUILDING ABOVE

5  
H5.41

9' - 6 1/2"

73' - 4"

9' - 7"

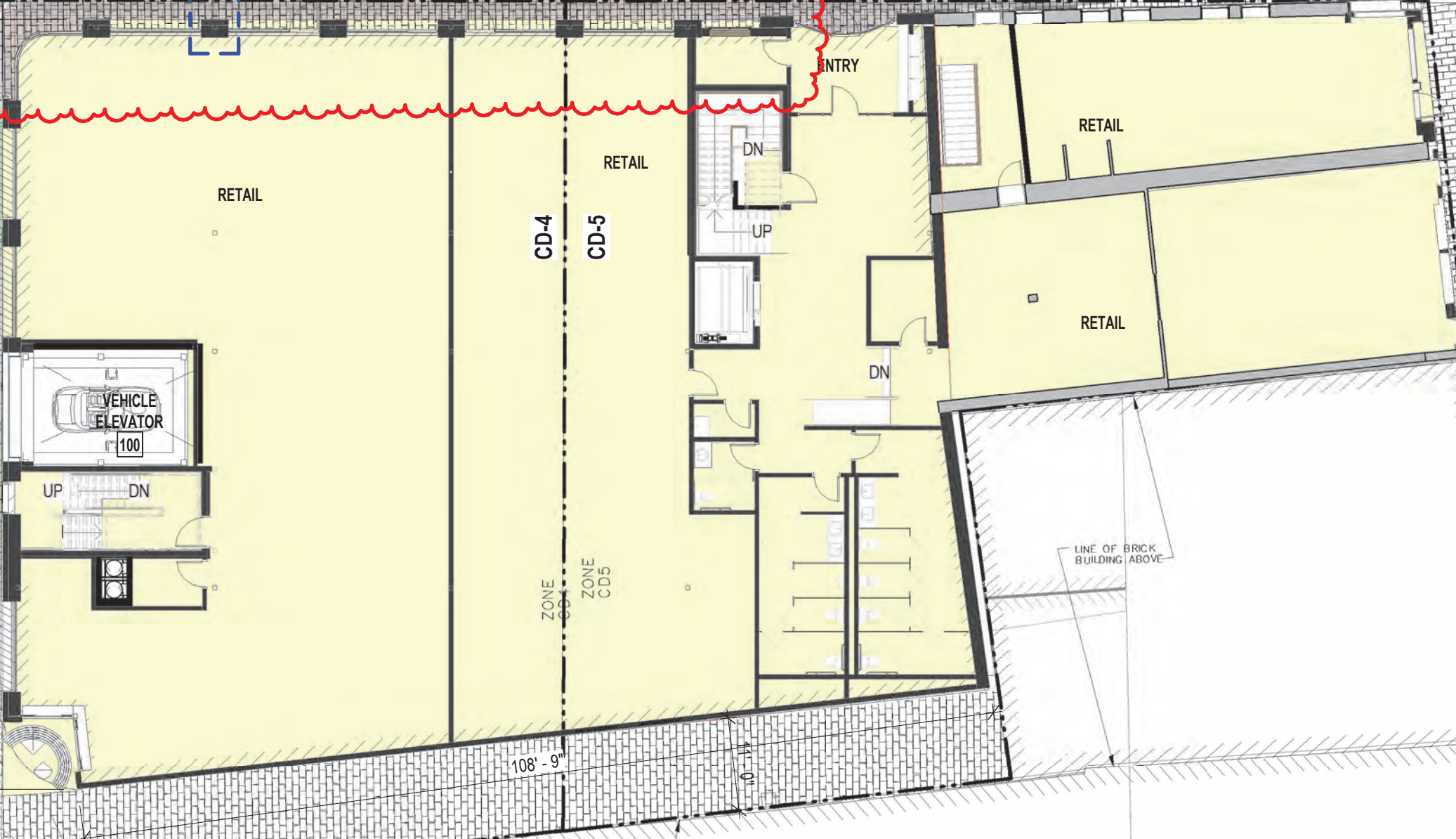
73' - 7 3/8"

8' - 0"

108' - 9"

10' - 11"

42' - 9 1/2"



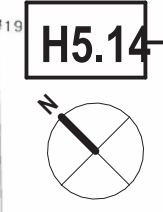
SEALING  
ARCH (TBD)  
DISK/STONE/BEVE PLANNERS  
FLOOR FINISHES  
MURALS (TBD)  
CATENARY LIGHT CABLES (TYP)  
AVING

DEFECTABLE WARNING TYPE  
PROPERTY LINE HIGHLIGHTED

LINE OF BRICK BUILDING ABOVE

PROPERTY LINE HIGHLIGHTED

LINE OF BRICK BUILDING ABOVE



**H5.14** **FIRST FLOOR PLAN**  
**1 CONGRESS STREET**

SCALE: 1/16" = 1'-0"  
10/14/2022

GRAPHIC SCALE: 1/16" = 1'-0"





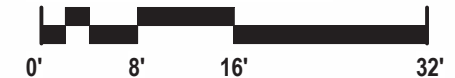
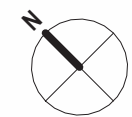


H5.15

**BASEMENT PLAN**  
**1 CONGRESS STREET**

SCALE: 1/16" = 1'-0"  
8/03/2022

GRAPHIC SCALE: 1/16" = 1'-0"

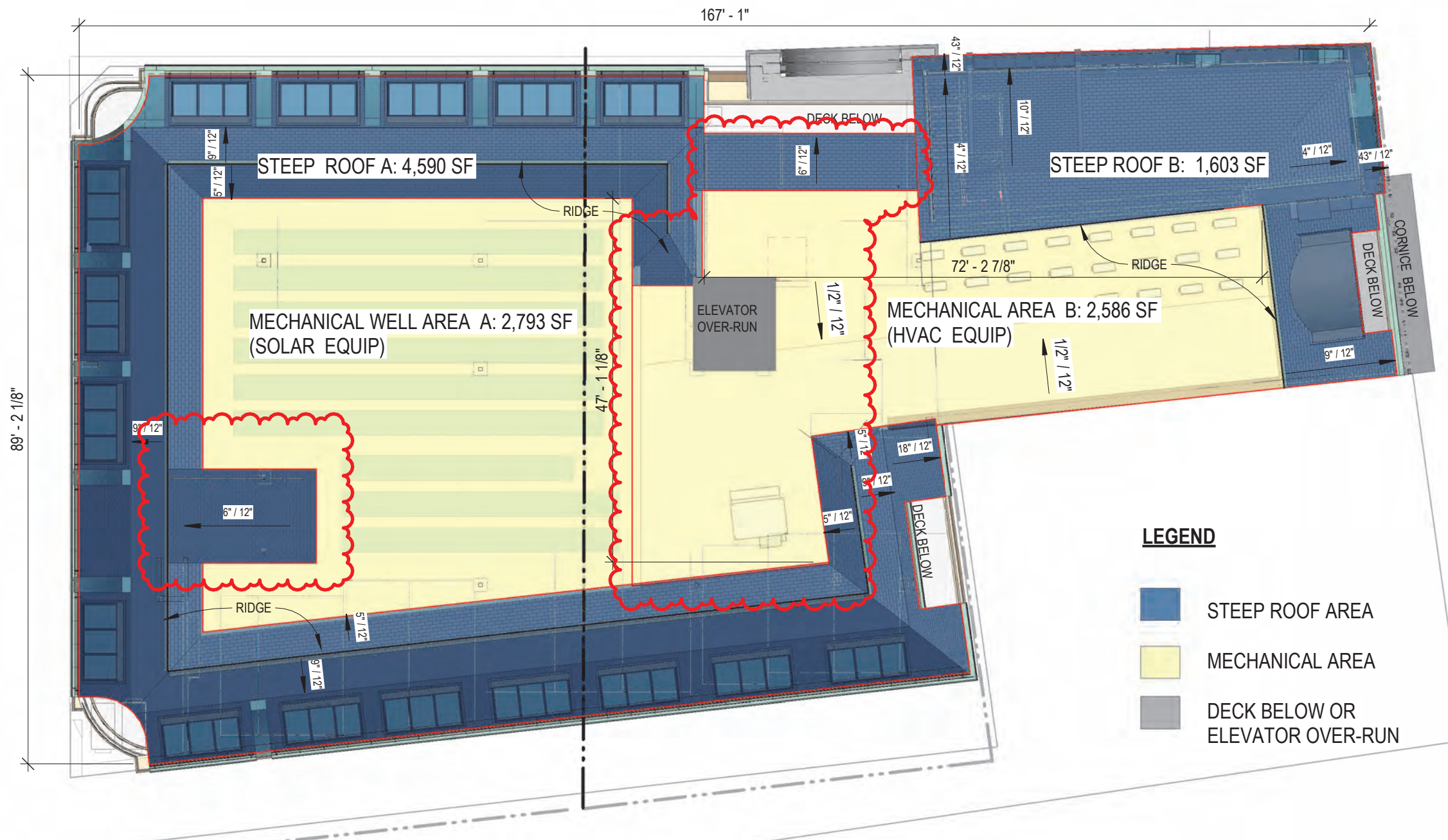


COPYRIGHT © 2022





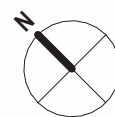




**LEGEND**

- STEEP ROOF AREA
- MECHANICAL AREA
- DECK BELOW OR ELEVATOR OVER-RUN

HIP TOP MANSARD ROOF	
1 Congress Street	
10/13/2022	
<b>SLOPED ROOF AREAS</b>	
STEEP ROOF AREA A	4,590
STEEP ROOF AREA B	1,603
<b>Total</b>	<b>6,193</b>
<b>MECHANICAL AREAS</b>	
MECHANICAL AREA A	2,793
MECHANICAL AREA B	2,586
<b>Total</b>	<b>5,379</b>
<b>TOTAL ROOF AREA</b>	<b>11,572</b>
Slope roof % of total	53.52%
<b>Flat roof % of total</b>	<b>46.48%</b>



GRAPHIC SCALE: 1/16" = 1'-0"



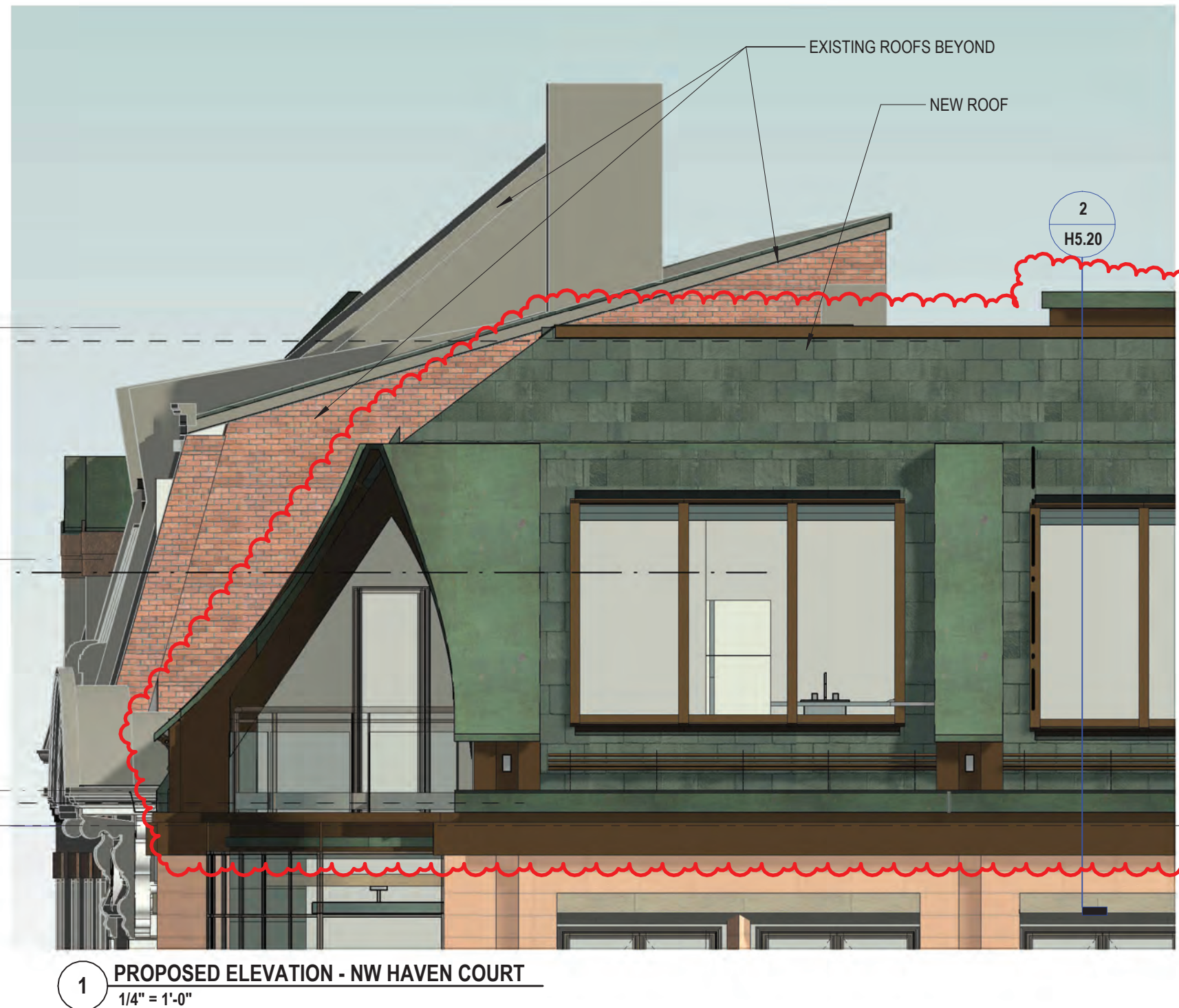
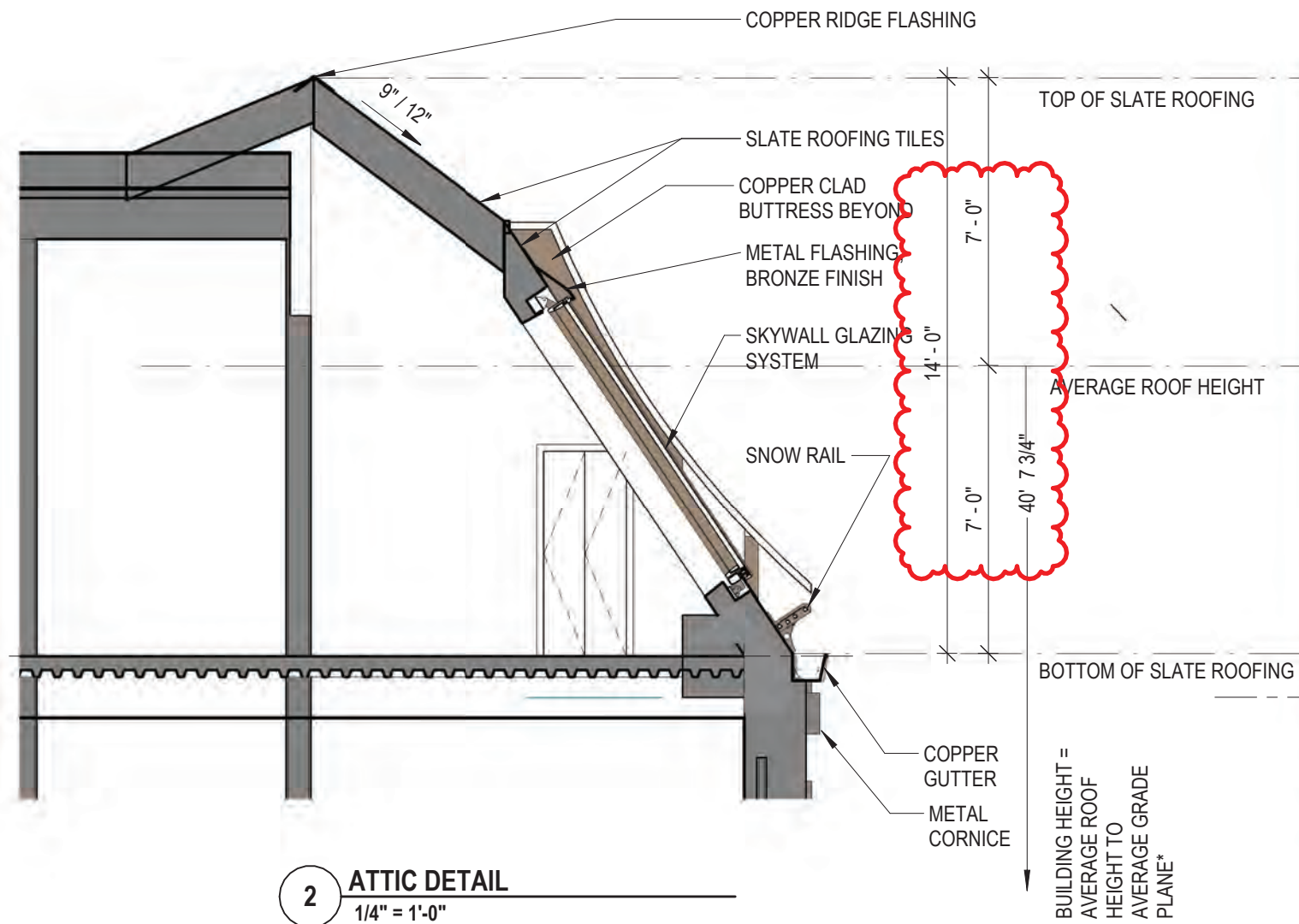
**H5.17 ROOF AREA CALCULATIONS**  
**1 CONGRESS STREET**

SCALE: 1/16" = 1'-0"  
10/14/2022



COPYRIGHT © 2022





**H5.20 ROOF HEIGHT DETAIL - HAVEN CT**  
**1 CONGRESS STREET**

SCALE: 1/4" = 1'-0"  
 10/14/2022

\* FOR AVERAGE GRADE PLANE OF TOTAL BUILDING SEE SHEET H5.16



COPYRIGHT © 2022





**1 PROPOSED ELEVATION - CONGRESS STREET**  
3/32" = 1'-0"



- RESTORE & RECREATE ORIGINAL GRANITE AND CAST IRON STOREFRONT
- REPLICATE EARLY 20TH CENTURY STAINED GLASS TRANSOMS
- REPLICATE HISTORIC PEDIMENTS
- REPLICATE ORIGINAL CAST IRON STOREFRONT THIS SIDE



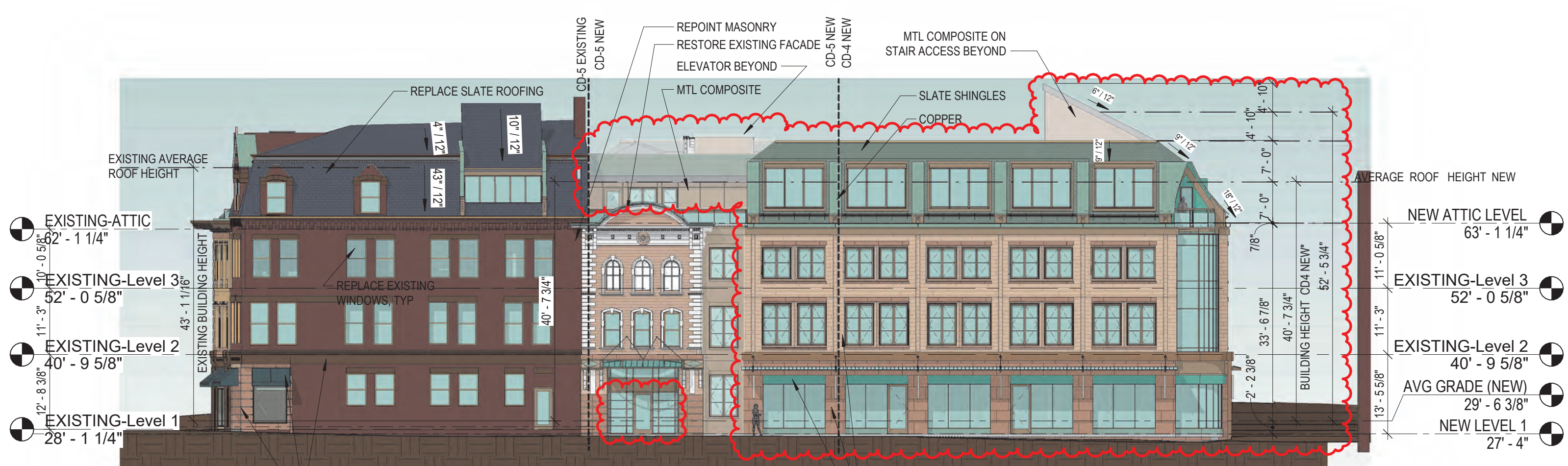
**H5.21 ELEVATION - CONGRESS STREET**  
**1 CONGRESS STREET**

SCALE: As indicated  
10/14/2022



**2 PROPOSED ELEVATION - CONGRESS STREET**  
1/8" = 1'-0"

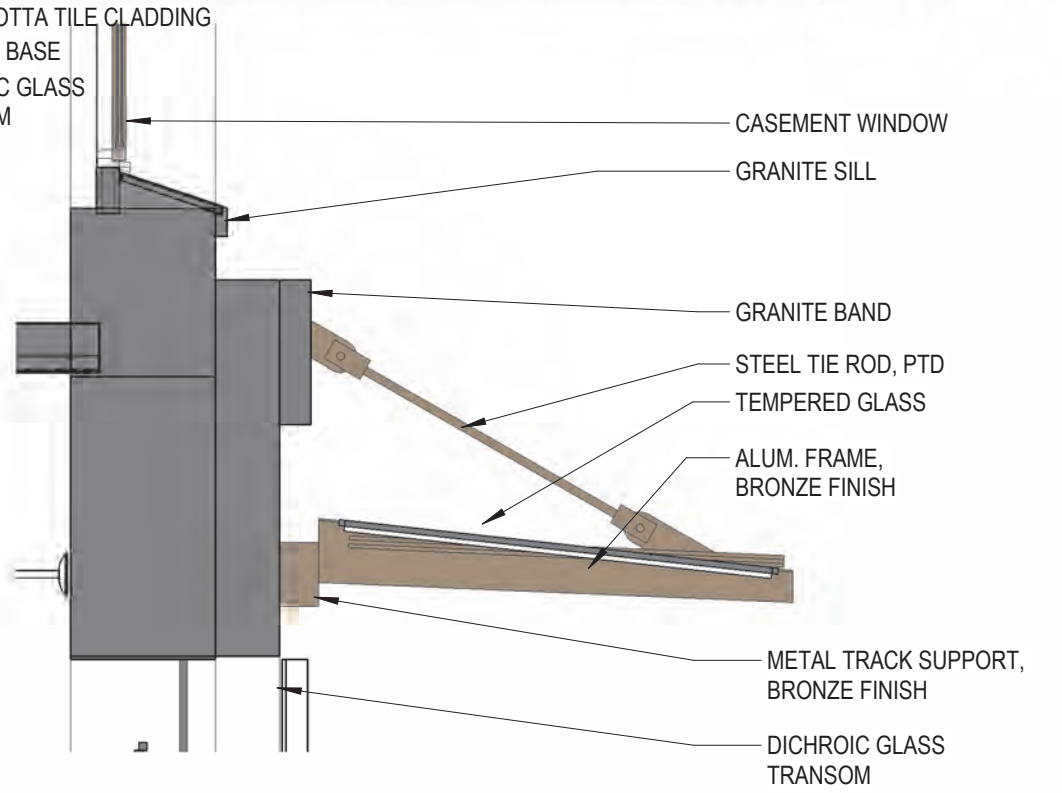




**1 PROPOSED ELEVATION - NE - HIGH STREET**  
 1/16" = 1'-0"



**2 PROPOSED ELEVATION - NE - HIGH STREET**  
 1/8" = 1'-0"



**3 HDC AWNING DETAIL**  
 1/2" = 1'-0"

**H5.22 ELEVATION - HIGH STREET**  
**1 CONGRESS STREET**

SCALE: As indicated  
 10/14/2022







2 NORTH ELEVATION - HIGH STREET & HAVEN COURT (OBLIQUE)  
 1/16" = 1'-0"



1 PROPOSED ELEVATION - NW HAVEN COURT  
 1/16" = 1'-0"

- NEW ATTIC LEVEL 63' - 1 1/4"
- EXISTING-Level 3 52' - 0 5/8"
- EXISTING-Level 2 40' - 9 5/8"
- AVG GRADE (NEW) 29' - 6 3/8"
- NEW LEVEL 1 27' - 4"

**ELEVATIONS - HAVEN COURT**  
**1 CONGRESS STREET**

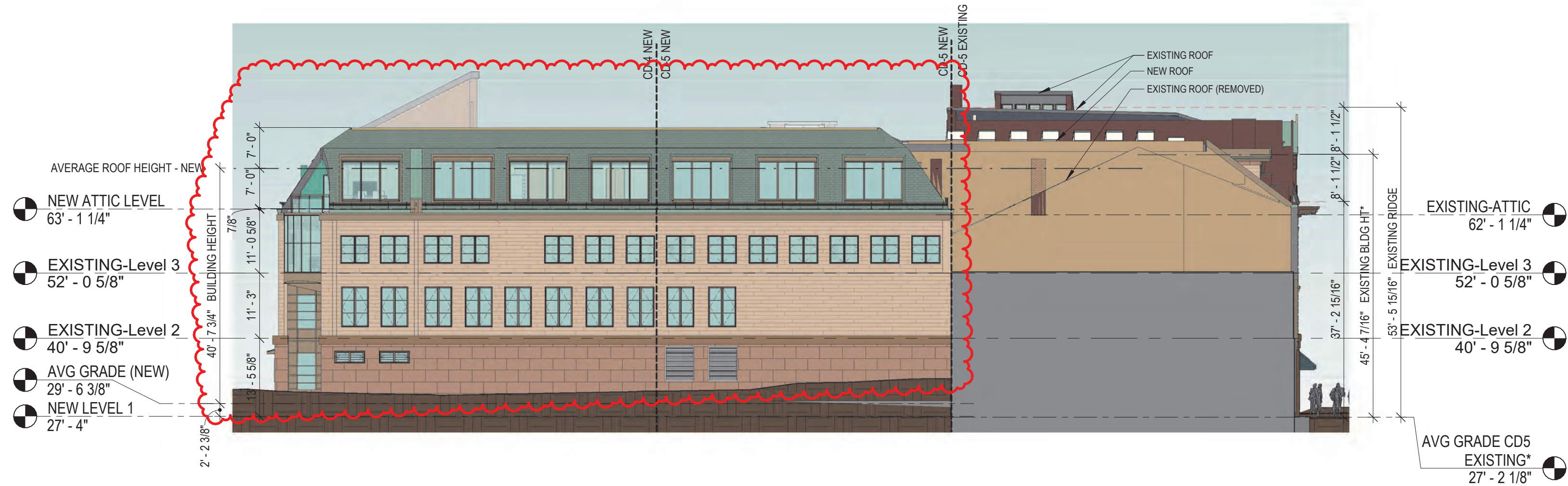
SCALE: 1/16" = 1'-0"  
 10/14/2022

H5.23

\* FOR AVERAGE GRADE PLANE OF TOTAL BUILDING SEE SHEET H5.16







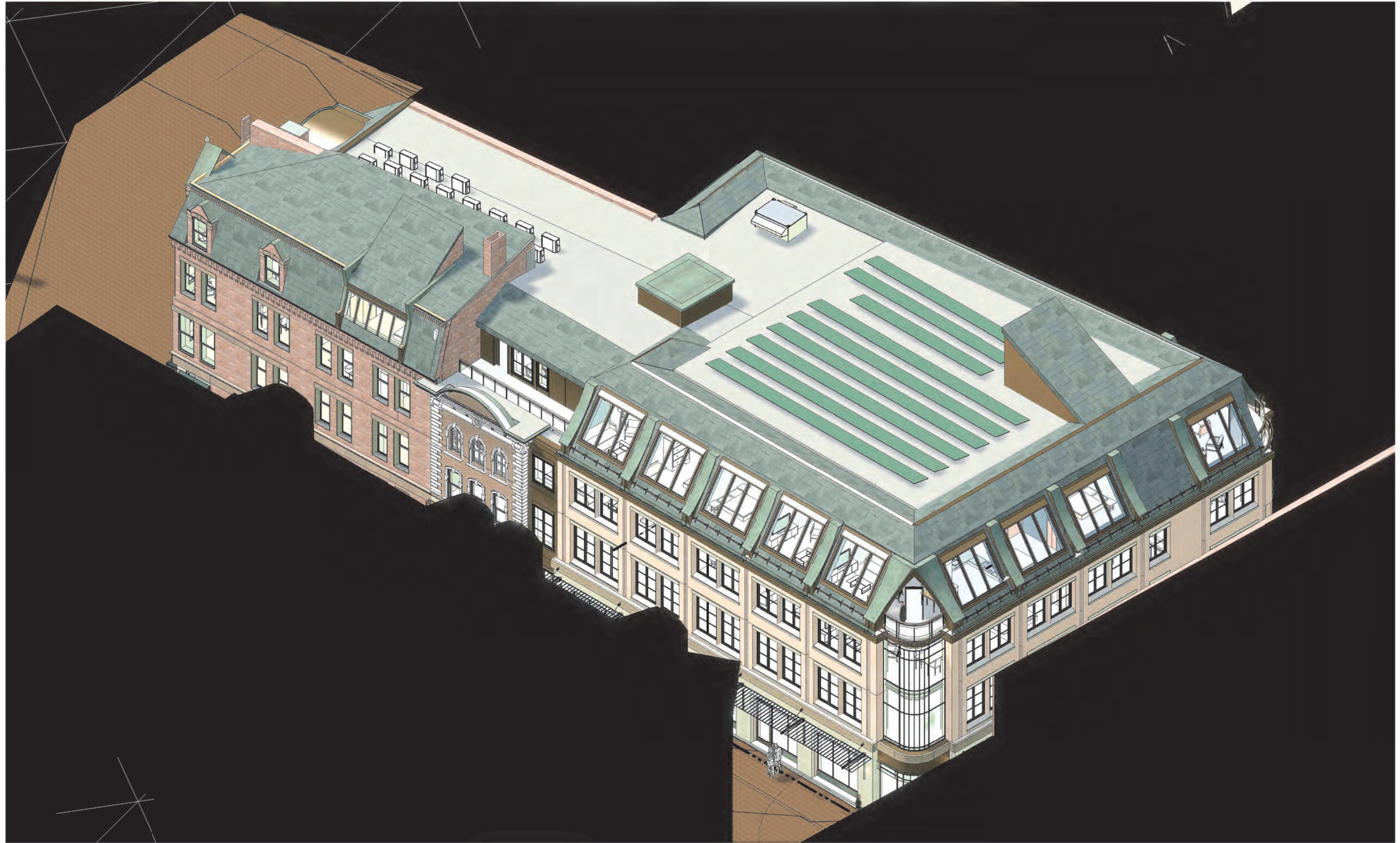
**H5.24 SW ELEVATION - REAR ALLEY  
1 CONGRESS STREET**

SCALE: 1/16" = 1'-0"  
10/14/2022



COPYRIGHT © 2022





**H5.31** BIRDSEYE AXONOMETRIC  
1 CONGRESS STREET

SCALE:  
10/14/2022



COPYRIGHT © 2022





**H5.32** VIGNETTE - CONGRESS STREET  
1 CONGRESS STREET

SCALE:  
8/03/2022



COPYRIGHT © 2022





**H5.33 VIGNETTES - HIGH FROM CONGRESS  
1 CONGRESS STREET**

SCALE:  
10/14/2022







**H5.34** HIGH STREET FROM STARBUCKS  
1 CONGRESS STREET

SCALE:  
10/14/2022



COPYRIGHT © 2022





**H5.35. VIGNETTE - HAVEN CT FROM LADD ST  
1 CONGRESS STREET**

SCALE:  
10/14/2022



COPYRIGHT © 2022





**H5.36** VIGNETTE - HIGH AT LADD & HAVEN  
1 CONGRESS STREET  
SCALE: 10/14/2022  
TANGRAM 3DS





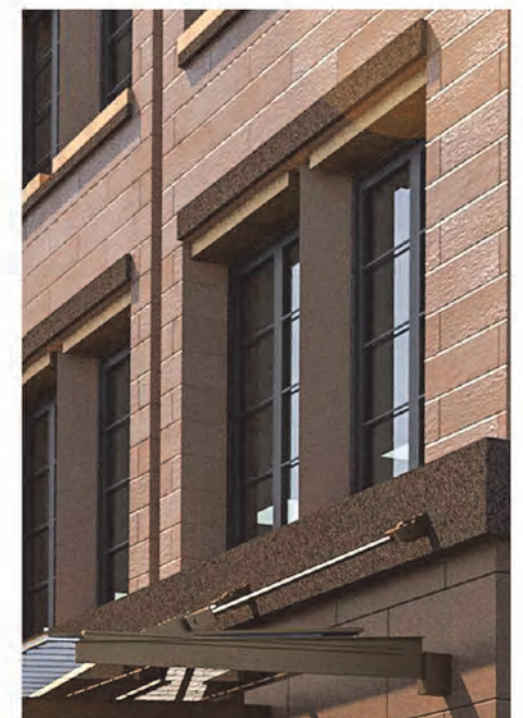
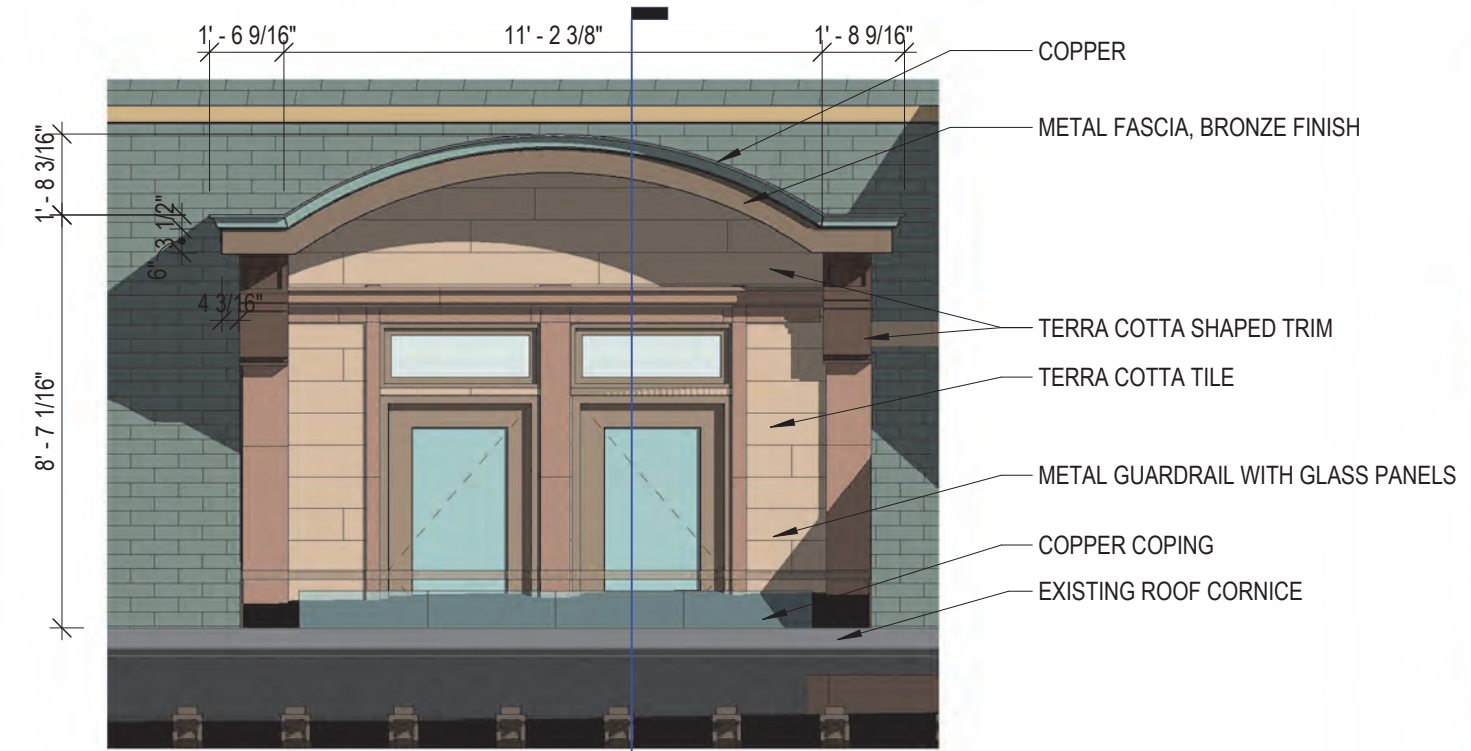
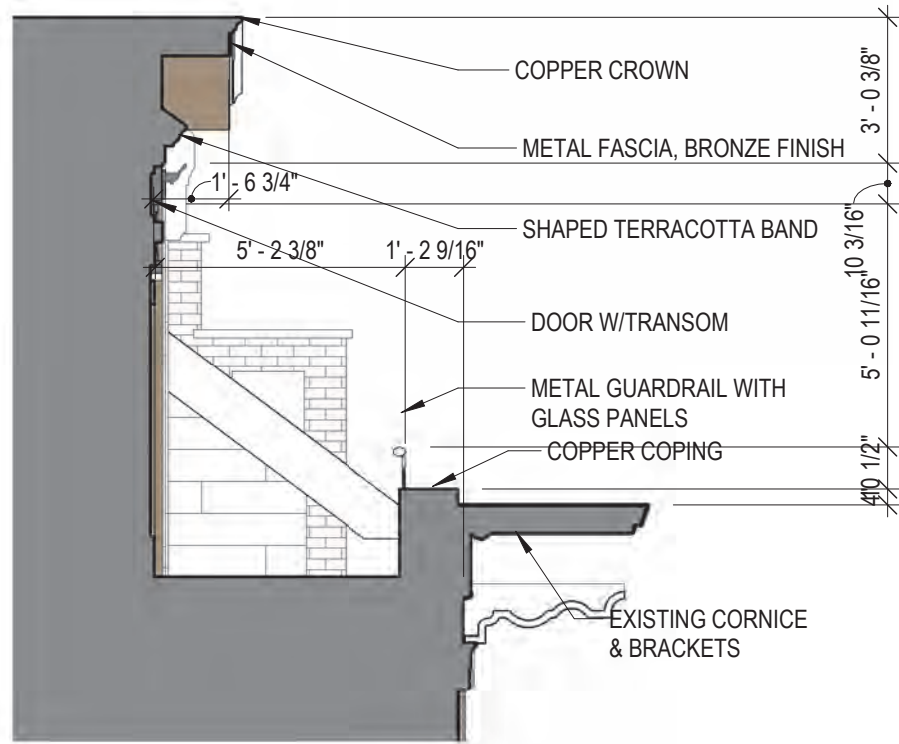


**H5.37** VIGNETTE - HAVEN CT AT NEWBERRY  
1 CONGRESS STREET

SCALE:  
10/14/2022



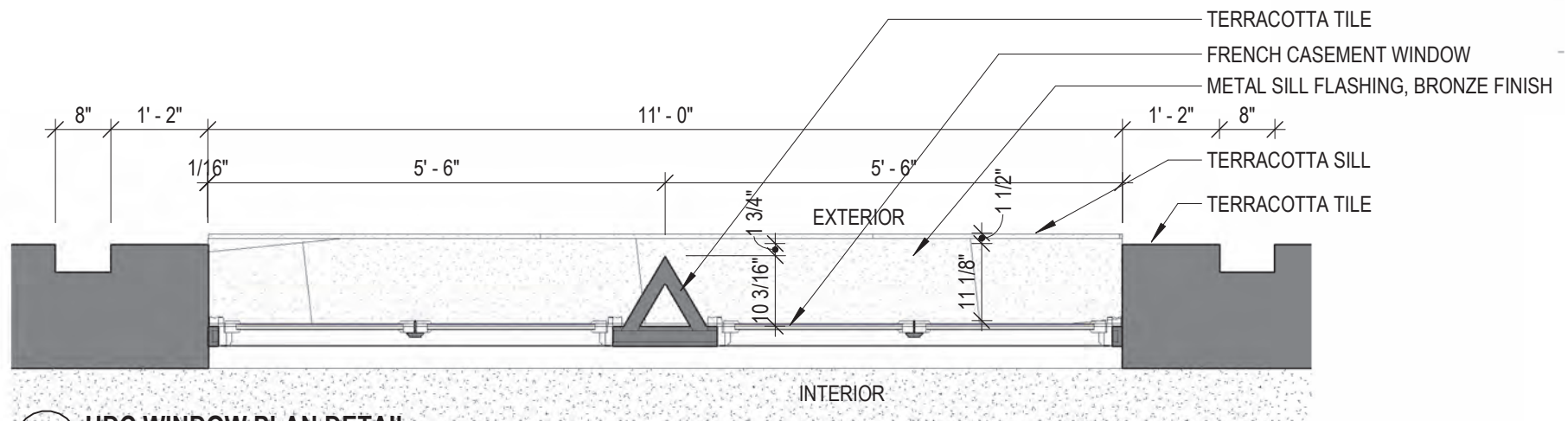




**2** HDC DORMER SECTION  
1/4" = 1'-0"

**1** HDC DORMER ELEVATION  
1/4" = 1'-0"

**2**  
H5.41



**4** HDC WINDOW PLAN DETAIL  
1/2" = 1'-0"

**H5.41** DETAILS  
**1 CONGRESS STREET**  
SCALE: As indicated  
8/03/2022



COPYRIGHT © 2022







## Northlight 25-90°

Similar to Longlights, Northlights are bands of VELUX Modular Skylights. The characteristic upright design is primarily for installations that are directed towards the northern hemisphere for soft and reflected lighting. Northlight installations are applicable for a pitch of 25 to 90°.

At the bottom, Northlights are mounted on a standard steel profile, 100 mm wide (not a VELUX component) and fixed with clamps holding the skylight in place. At the top, the brackets are fixed to the sub-construction with screws meant for wood.

The prefabricated modular flashing ensures easy integration in the roof surface. All flashings are easily installed. The roof surface underneath the flashing must be appropriate for screw fixation.

Please observe a max. 10 m wall height above skylight module, when installed in a sloped roof. Take notice that the top flashing changes in size above and below 54°, see sectional drawing page 59.



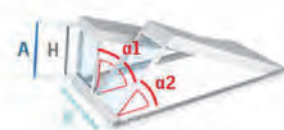
Download  
CAD & BIM  
objects

Sub-construction for  
Northlight at:  
[veluxcommercial.com](http://veluxcommercial.com)

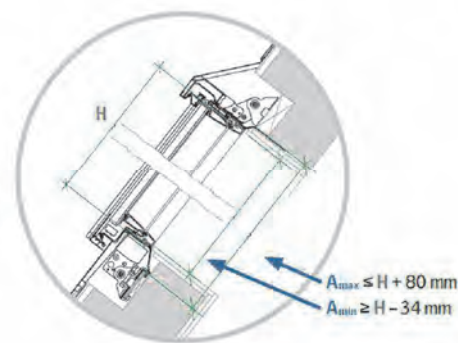
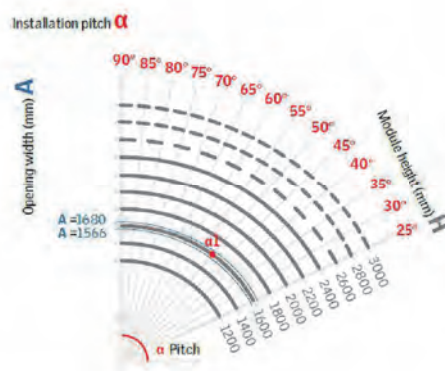


### Defining module size to your project

Example:  
 $\alpha 1$ :  $H = 1600$  mm at an installation pitch of  $50^\circ$   
 $A_{max} = 1680$  mm  
 $A_{min} = 1566$  mm



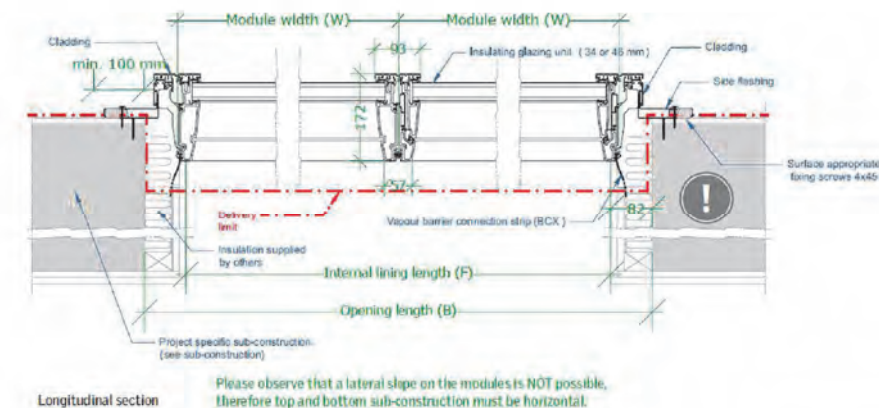
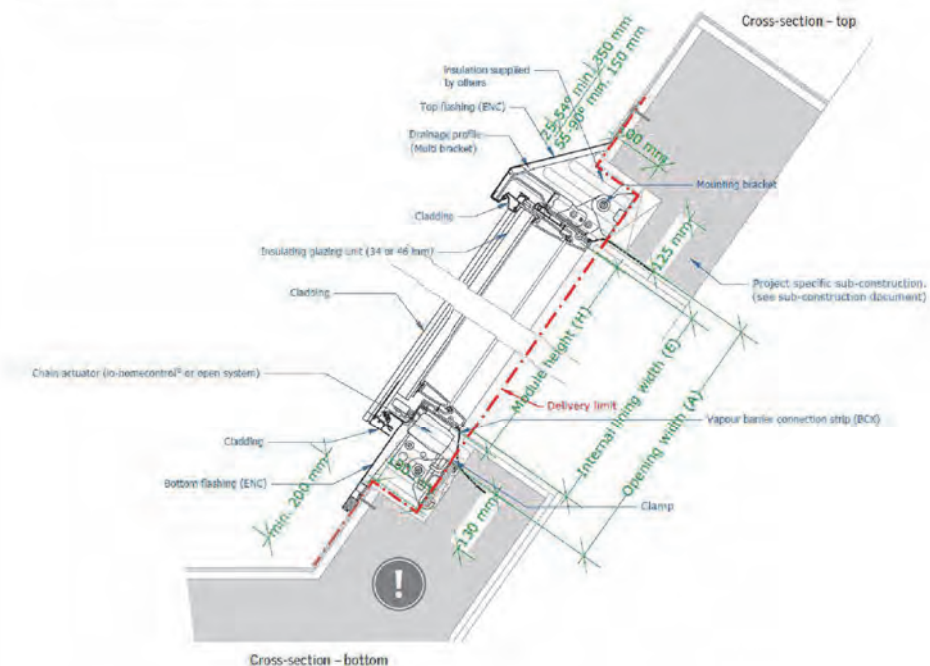
H: Module height  
 $\alpha$ : Installation pitch  
A: Opening width  
L: Opening length



58 --- Not available as venting modules as default.

## ROOF WINDOWS - VELUX "NORTHLIGHT"

## Sectional drawings



VELUX Commercial 59



STOREFRONTS

WINDOWS • CURTAIN WALLS • ENTRANCES • STOREFRONTS

**Series 403X**  
2" x 4 1/2" Thermal Storefront Framing




**CONFIGURATIONS**  
**Shear Block • Screw Spline**  
This innovative flush glaze storefront framing system utilizes a dual pour and debridge thermal barrier that provides outstanding energy efficiency. Available in either shearblock or screw spline construction, the 403X Series can be used in conjunction with virtually all EFCO entrance system and V410 vents. A variety of options are available for use with this system, including sunshade mullions and variable sight line horizontals. Steel reinforcement is also available to enhance structural capability.

<b>Features</b>	<b>Benefits</b>
Dual pocket thermal barrier framing	Enhanced thermal performance and reduced energy cost
Screw spline or shearblock construction	Decreases installation labor and cost
The optional Roto-Vent™ ventilator	Ability to erect on the job site
2-way (90° and 135°) and 3-way corner mullions	Allows fresh air into the room, yet maintains security
0°-15° and 15°-30° variable mullions	Multifaceted elevations for design flexibility
Accommodates up to 1 1/16" glazing	Increased design flexibility
Uniform glazing gasket is used for exterior and interior	Expands design and energy savings options
Various height intermediate horizontals and sills	Allows optimized use of gasket and reduces inventory
Accessory line of perimeter anchors, pocket fillers, door adaptors, etc.	Simplifies ordering and installation
Anodized or painted finishes available	Ability to maintain desired sight line
	Increased product versatility
	Multiple options to answer economic and aesthetic concerns

**EFCO** COATINGS FINISHES COLORS

**ULTRAPON (70% PVDF)**

STANDARD				FEATURED	

**ULTRA-ESCENT II (70% PVDF MICA\*)**

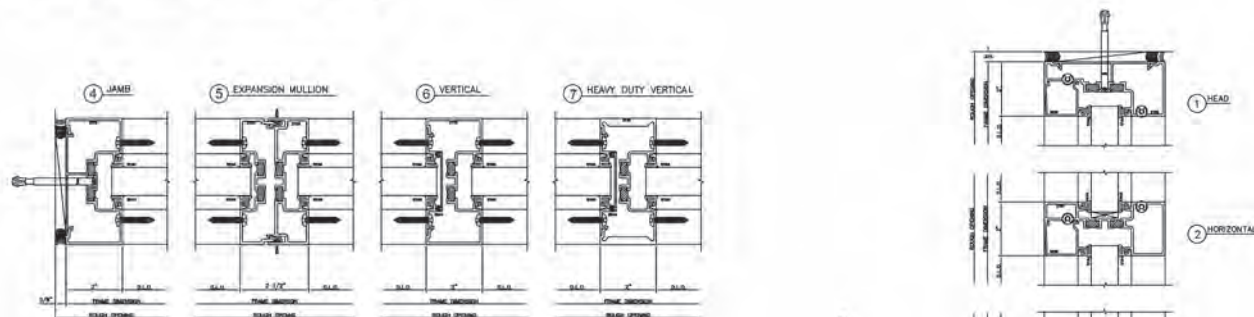
STANDARD				FEATURED	

**ANODIZE**

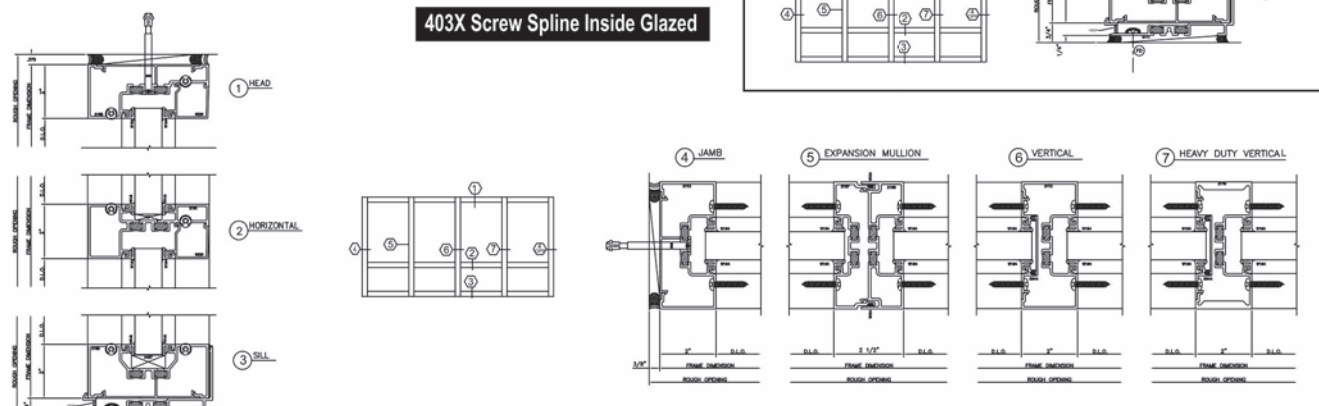
--	--	--	--	--	--

\* The color samples shown are not true to scale. These color swatches represent the production color as closely as possible within the limitations of color chip reproduction. Additional changes may apply to some colors that require a clear finish, metallic, or other system color finishes.  
\* Color variation is inherent in all pigments and should be expected with all colors. Exact shade may vary slightly. Color consistency between batches will appear different from production run to run.

403X Screw Spline Outside Glazed Steps Down



403X Screw Spline Inside Glazed



reproduction 05/15

STOREFRONT TRANSOMS

3M™ Dichroic Film for Laminated Glass

Compatible with EVA, SentryGlas® or PVB interlayer adhesives. Available in gold-blue or copper-bronze colors.

**Flexible**

Film can be printed, cut, patterned, bent, or combined with different glass types or interlayer adhesives.

**Versatile**

Applications include shading fins, balustrades, exterior glass, partition walls, shower doors, artistic glass and furniture.

Gold-Blue Dichroic Film



**In Transmission (Shown)** Yellow ▶ Magenta ▶ Blue  
**In Reflection** Gold (straight) Blue (angle)

Copper-Bronze Dichroic Film



**In Transmission (Shown)** Magenta ▶ Blue ▶ Aqua  
**In Reflection** Copper (straight) Bronze (angle)

**How is it made?**  
3M™ Dichroic Film is easily laminated between sheets of adhesive interlayers. It's conformable for bent glass applications and works with different glass and PVB combinations.



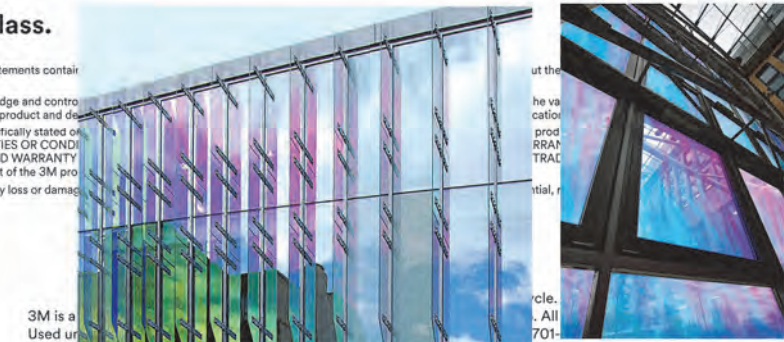
Solar performance of clear laminated glass

	Reflection Visible	Transmission Visible	Transmitted Energy	Reflected Energy	Absorbed Energy	TSER	SHGC
Gold-Blue Dichroic Glass	89%	11%	56%	29%	15%	39%	0.61
Copper-Bronze Dichroic Glass	29%	71%	55%	29%	17%	41%	0.59

Make an impression at 3M.com/Glass.

**Technical Information:** The technical information, recommendations and other statements contain information is not guaranteed.  
**Product Use:** Many factors beyond 3M's control and uniquely within user's knowledge and control and performance of a 3M product, user is solely responsible for evaluating the 3M product and determining its suitability for the intended application.  
**Warranty, Limited Remedy, and Disclaimer:** Unless an additional warranty is specifically stated on the product, 3M MAKES NO OTHER WARRANTIES OR CONDITIONS OF MERCHANTABILITY OR FITNESS FOR A PARTICULAR PURPOSE OR ANY IMPLIED WARRANTY TO THIS WARRANTY, then the sole and exclusive remedy is, at 3M's option, replacement of the 3M product.  
**Limitation of Liability:** Except where prohibited by law, 3M will not be liable for any loss or damage, including warranty, contract, negligence or strict liability.

**3M**  
Renewable Energy Division  
3M Center, Building 235-25-27  
St. Paul, MN 55144-1000  
3M.com/glass



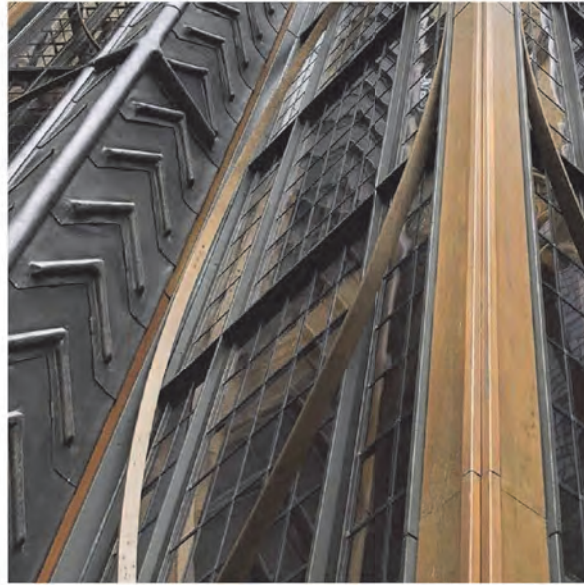
**H5.52 MATERIALS - ARCADE FENESTRATION**  
**1 CONGRESS STREET**

SCALE:  
8/03/2022



COPYRIGHT © 2022



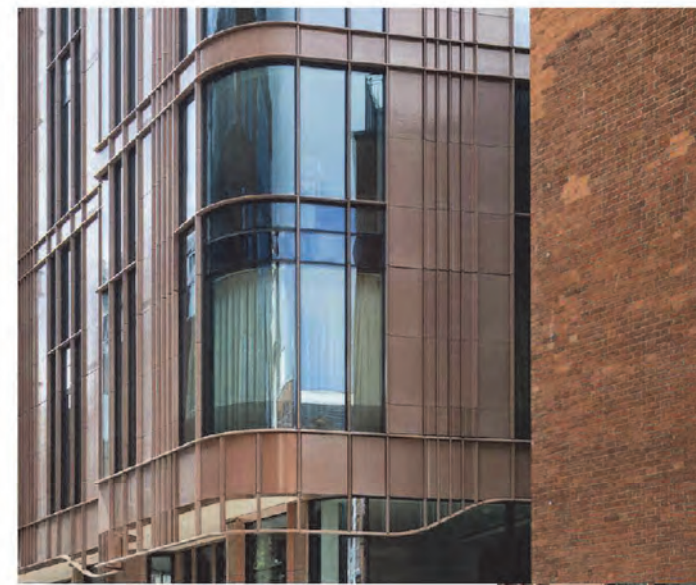


BRONZE FINISH - METAL ACCENTS - WINDOW & DOOR FRAMES, AWNINGS, DORMER LEVEL CLADDING.

Upper walls, cladding

Terra Cotta, glazed tile

TERREAL, PITERAK SLIM



Marylebone Lane Mansion  
London

Glaze color: Tea with Milk



Lower walls, cladding

Granite



Deer Isle

At restored Facades



Carolina Coral

First floor addition, field color



Autumn Pink

First floor addition - accent color



Piterak Slim Terracotta Cladding

**H5.53** MATERIALS - CLADDING  
**1 CONGRESS STREET**

SCALE:  
8/03/2022



COPYRIGHT © 2022



## SOFFIT-CEILING AT ARCADE DROP-OFF

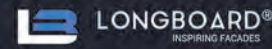


- thermally broken
- made of light weight aluminum
- supports continuous insulation
- creates a rain screen
- response time within 24 hours
- supports other cladding up to 8 lbs per sq ft.
- adjustable for sub-wall misalignment
- health product declarations
- support for specifications + drawings
- built for seismic zones



easy to use	quick delivery
solid warranty	durable finishes

longboardproducts.com



LONGBOARD®

### WOODGRAIN OPTIONS

Our woodgrain options are divided into four categories based on the consistency of the wood grain pattern.

#### CONSISTENT



## COMPOSITE WALL PANELS (ELEVATOR OVER-RUN AND RECESSED ACCENTS)

### ALUCOBOND Products



#### PROPERTIES AND BENEFITS

- Flatness and Rigidity
- Lightweight
- Durability
- Custom color expertise
- Formability
- Ease of fabrication
- Perforation capabilities
- 89 stocked ACM colors
- Complementary flat aluminum sheet colors
- Can contribute toward LEED points
- 100% recyclable
- Zero VOC's emitted in use
- EPD in compliance with International ISO Standards

#### ALUCOBOND® PLUS

4mm ACM comprised of two sheets of smooth .020" aluminum thermobonded to a solid, fire retardant core. Developed exclusively to meet fire performance requirements while providing the benefits & versatility of ACM.

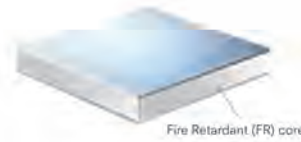
#### ALUCOBOND® AXCENT™

A solid .040" flat aluminum sheet that offers the perfect complement to ALUCOBOND PLUS. AXCENT is excellent for columns, parapet caps, canopies, soffits, and trim.

#### ALUCOBOND® EasyFix™

ALUCOBOND EasyFix is a cost-effective installation method for wood-frame construction in multifamily and mixed-use sectors. The simple installation method utilizes an innovative design for attachment of ALUCOBOND PLUS panels. The design provides an aesthetic solution similar to traditional ACM systems.

- ALUCOBOND EasyFix must be used with:
- ALUCOBOND PLUS
  - ALUCOBOND EasyFix: Clips or Rails



#### Product Properties

Thickness of aluminum skin	0.020" (nominal)
Product thickness	0.157" (4mm nominal)
Weight	1.56 lb/ft <sup>2</sup>
Standard panel dimension*	62" x 196"
Maximum width**	62"
Maximum length**	400"

#### Product Properties

Product thickness	0.040" (nominal)
Weight	0.56 lb/ft <sup>2</sup>
Standard width	48"
Standard length	120"

#### Product Properties

Weight	1.9 lb/ft <sup>2</sup>
Weight	1.56 lb/ft <sup>2</sup>
Standard panel dimension*	40" x 196"
Maximum panel width/length	62"/400"
Clip length	3"
Rail length	12'

\*\* Sheets may be fabricated to meet custom panel sizes within maximum product range above.

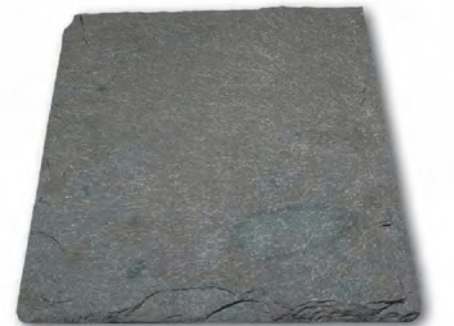
#### The Classic Collection



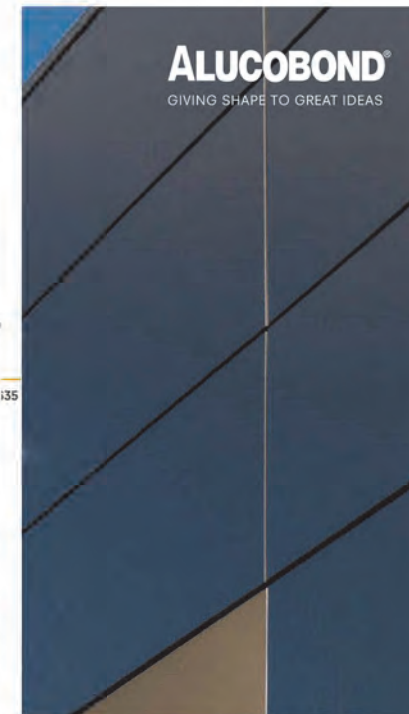
#### The Classic Collection



## ROOFING - NATURAL SLATE



GRAY-GREEN, SEMI-WEATHERING NATURAL SLATE; VERMONT SLATE



H5.54 MATERIALS - CLADDING  
1 CONGRESS STREET

SCALE:  
8/03/2022



COPYRIGHT © 2022



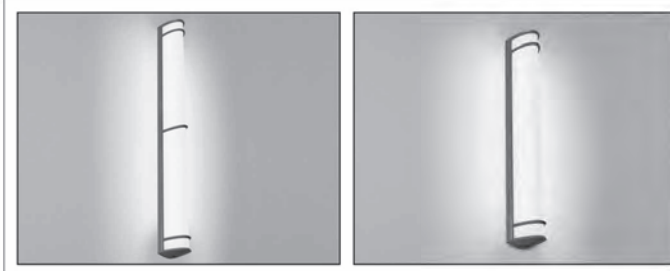
**RAVEN™**  
 OW1340/OW1342/OW1344/OW1346/OW1348  
 Outdoor models with Accent Bars

Rev. 20210523



VisaLighting.com/products/Raven

Type: \_\_\_\_\_ Project: \_\_\_\_\_ Location: \_\_\_\_\_



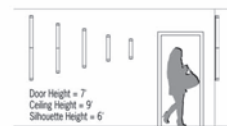
**DIMENSIONS<sup>1</sup>**  
 L = Length D = Depth W = Width WT = Weight

	OW1348	OW1340	OW1342	OW1344	OW1346
L	18-1/2" (470 mm)	24-3/4" (629 mm)	36-1/2" (927 mm)	48-5/8" (1229 mm)	60-1/8" (1527 mm)
D	4" (102 mm)				
W	3-5/8" (86 mm)				

**FEATURES**

- Integral driver
- Vertical or horizontal mounting
- Mounts to 2 X 4 electrical junction box (by others) with provided hardware. Requires auxiliary mounting fasteners (provided). Orient junction box to match fixture's linear dimension (horizontal or vertical).
- Tamper resistant fasteners
- High impact extruded aluminum backplate/side rails, die-cast end caps and trim bars, gasketed and sealed construction
- Extruded clear prismatic performance lens and extruded white acrylic diffuser
- High impact extruded white acrylic, FI rated, UV stable, 18-24 MB Flame Class rated
- No VOC powder coat finish
- ETL listed for wet location mounting 4' above grade

**RELATIVE SCALE DRAWING**



**PHOTOMETRICS**



800-788-VISA

VisaLighting.com

Page 1

**RAVEN (cont.)**  
 OW1340/OW1342/OW1344/OW1346/OW1348  
 Outdoor models with Accent Bars



**FINISHES**

Specify color code when ordering. For accurate color matching, individual paint and finish samples are available upon request. For more information about our finishes visit [www.visalighting.com/finishes](http://www.visalighting.com/finishes)

AGGY Agate Grey	ALGN Alpine Green	BJBG Baja Beige	BMAT Bronze Matt	<b>BRZ Bronze</b>	BSL Blade Silver	CVBL Cove Blue
DEOR Deoro Gold	GLWT Glacier White	GSL Graphite Silver	HRGR Harbor Grey	JTBK Jet Black	OCLB Ocean Blue	SHGR Shoreline Grey
SIGN Sagebrush Green	SLGR Slate Grey	SSTP Sierra Taupe	TRCN Terracotta Canyon	TRWT Traffic White	VLBK Velvet Black	VNRD Vineyard Red

**TRIFAB® VG (VERSAGLAZE®)**  
 TRIFAB® VG 450, 451 & 451T (THERMAL) FRAMING SYSTEMS &  
 TRIFAB® 451UT (ULTRA THERMAL) FRAMING SYSTEM

**Design + Performance**  
 Versatility with Unmatched  
 Fabrication Flexibility



Trifab® VersaGlaze® is built on the proven and successful Trifab® platform – with all the versatility its name implies. There are enough framing system choices, fabrication methods, design options and performance levels to please the most discerning building owner, architect and installer. The 4.5" depth Trifab® VersaGlaze® Framing System family is available with non-thermal, thermal and ultra-thermal performance levels. The ultra-thermal Trifab® 451UT Framing System, is designed for the most demanding thermal performance and employs a dual IsoLock® thermal break.

**AESTHETICS**

Trifab® VersaGlaze® Framing Systems offer front-, center-, back- or multi-plane glass

glazing (SSG) and weatherseal glazing options further expand designers' choices, allowing for a greater range of possibilities for specific project requirements and architectural styles. All systems have a 4-1/2" frame depth; Trifab® VersaGlaze® 450 has 1-3/4" sightlines, while Trifab® VersaGlaze® 451/451T and Trifab® 451UT have 2" sightlines.

With seamless incorporation of Kawneer entrances or windows, including GLASSvent® visually frameless ventilators, Trifab® framing can be used on almost any project. These framing systems can also be

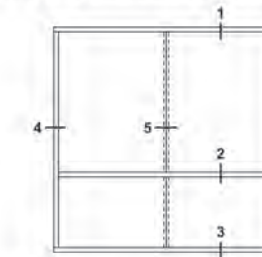
**STOREFRONT**

BLACK	BOYSBERRY	HARTFORD GREEN
SANDSTONE	CLASSIC BRONZE	MILITARY BLUE
BONE WHITE	COLONIAL WHITE	ANTIQUÉ BRONZE
DOVE GRAY	DARK IVY	CHARCOAL
REGWOOD	SEA WOLF	MEDIUM BRONZE

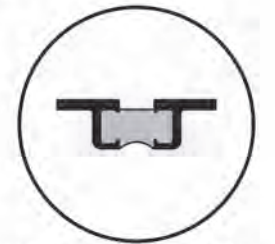
**WALL SCONCE  
 LIGHT FIXTURES**



Additional information and CAD details are available at [www.kawneer.com](http://www.kawneer.com)



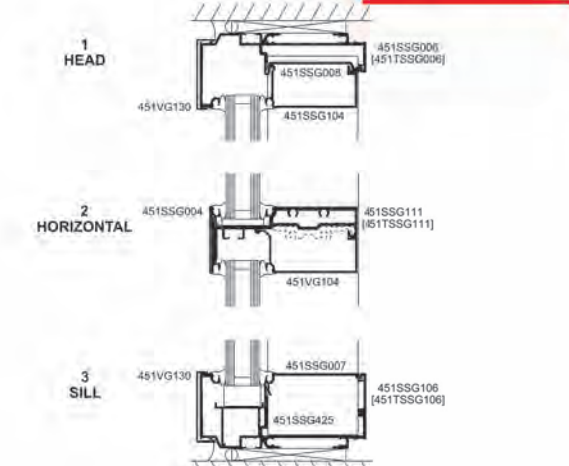
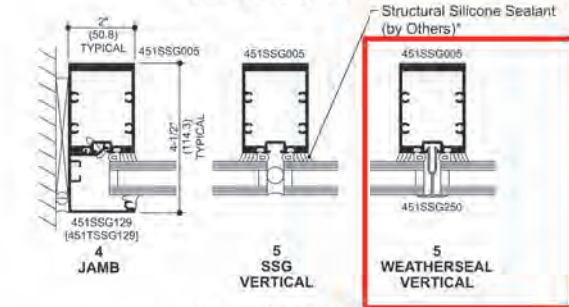
ELEVATION IS NUMBER KEYED TO DETAILS



NUMBERS IN BRACKETS ARE THERMALLY BROKEN MEMBERS

**STICK (INSIDE GLAZED)  
 TWO COLOR OPTION**

**SSG RECEPTOR**



**INSTALLER NOTE:** Installer is responsible for all required compatibility review and approvals with the Structural Silicone Manufacturer and the Insulating Glass Unit Manufacturer.



ADMCD40EN

kawneer.com

**H5.55**

**MATERIALS STOREFRONT & SCONCE  
 1 CONGRESS STREET**

SCALE:  
 10/14/2022



COPYRIGHT © 2022

Lenses and building and safety codes governing the design and use of Kawneer products, such as glazing entrance, window, and curtain wall products, vary widely. Kawneer reserves the right to change configuration without prior notice when deemed necessary for product improvement.

© 2018, Kawneer Company, Inc.