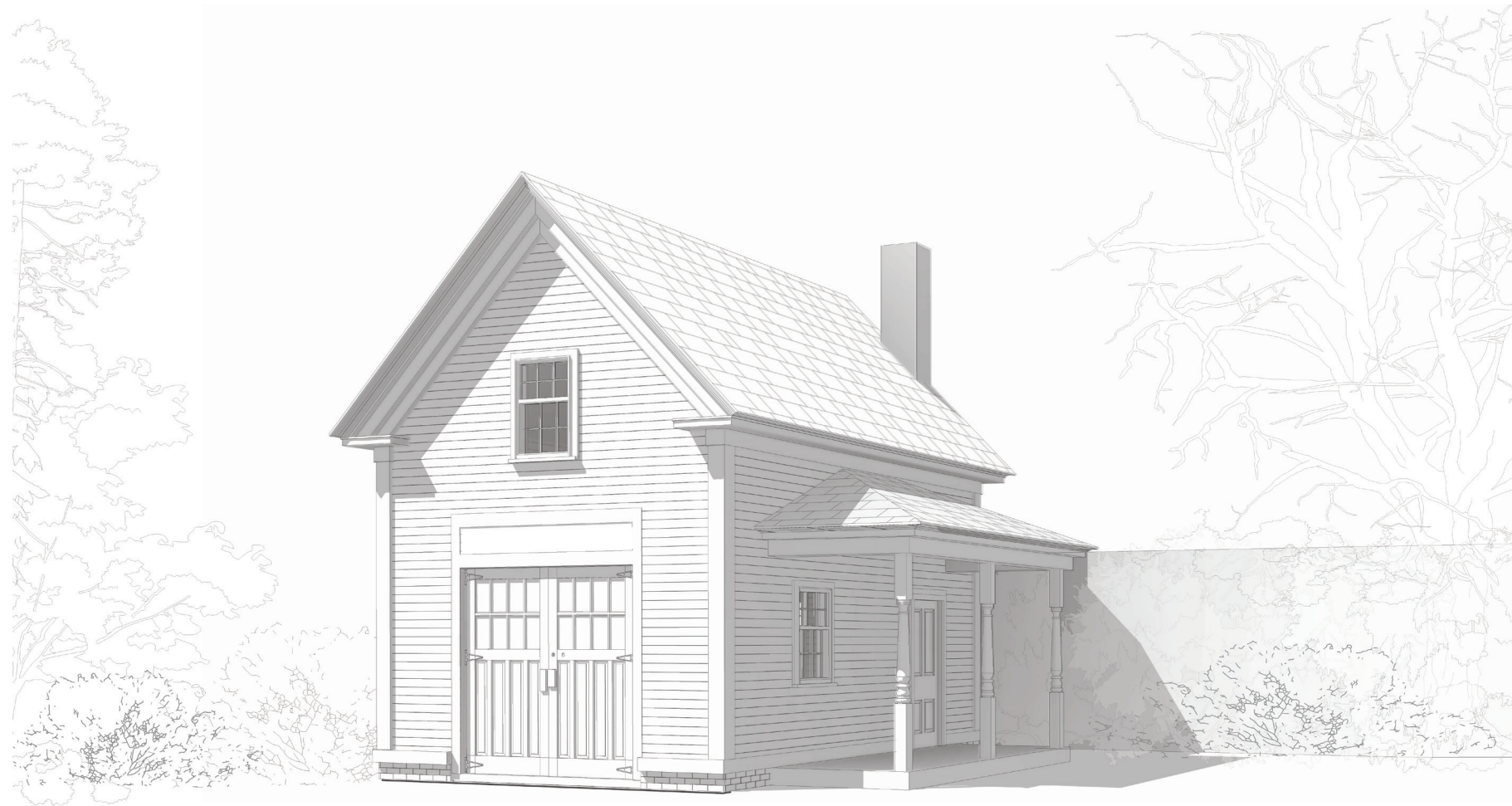


# 64 MT VERNON

PORTSMOUTH, NH





INSURANCE MAPS

OF

# Portsmouth

NEW HAMPSHIRE

PUBLISHED BY THE

SANBORN MAP COMPANY

11 BROADWAY, NEW YORK

# 1920

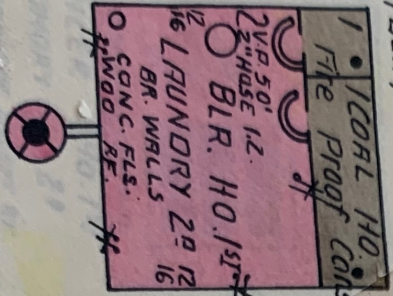
COPYRIGHT 1920 BY THE SANBORN MAP CO.

ALL RIGHTS RESERVED. NO PART OF THIS MAP MAY BE REPRODUCED IN ANY FORM WITHOUT WRITTEN PERMISSION FROM THE SANBORN MAP COMPANY.

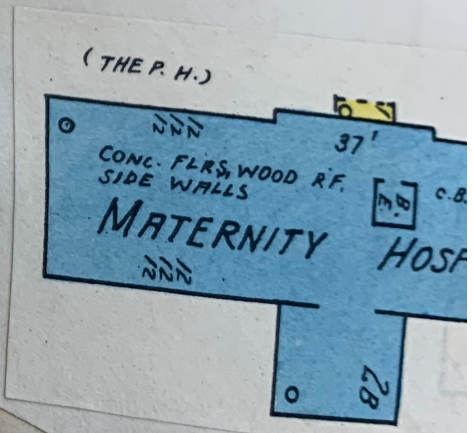
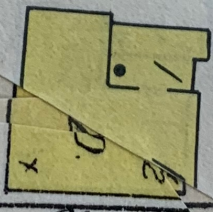
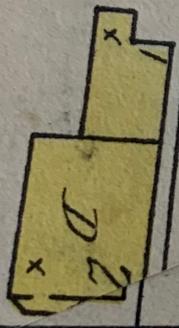
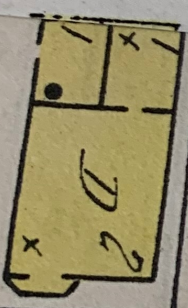
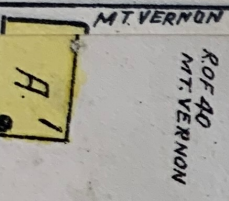
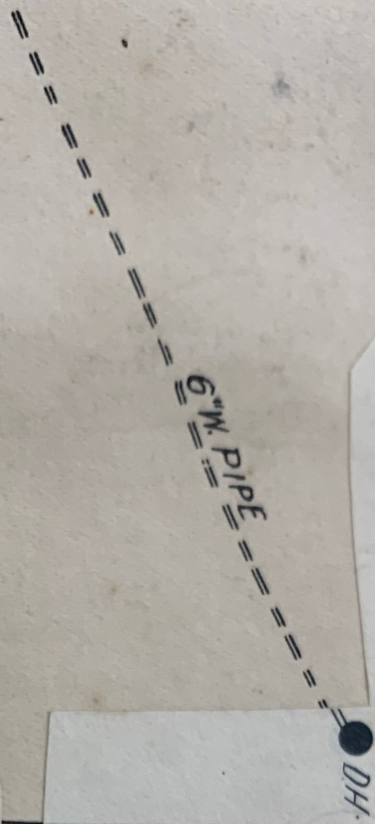
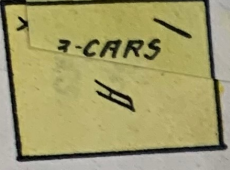
GREAT CARE HAS BEEN EXERCISED IN THE PRODUCTION OF OUR PUBLICATIONS AND OUR SERVICE, BUT ABSOLUTE ACCURACY IS NOT GUARANTEED.

Copyright renewed  
1947 by  
Sanborn Map Co.

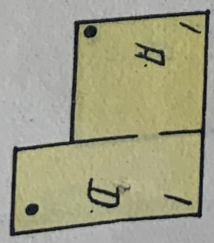
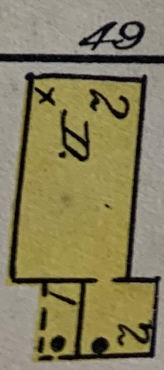
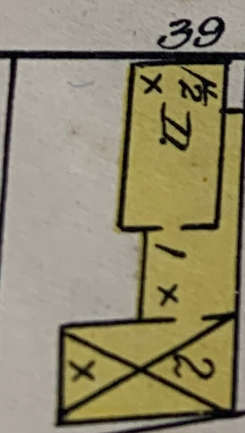
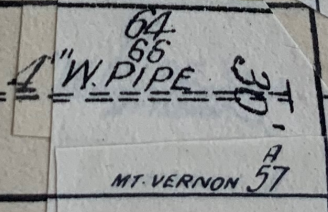





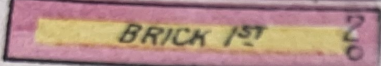
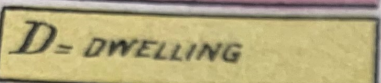
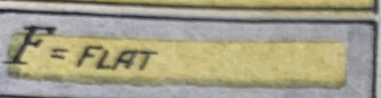
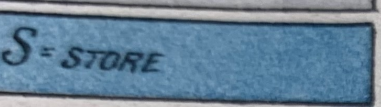
(B.L.1)



ERNON

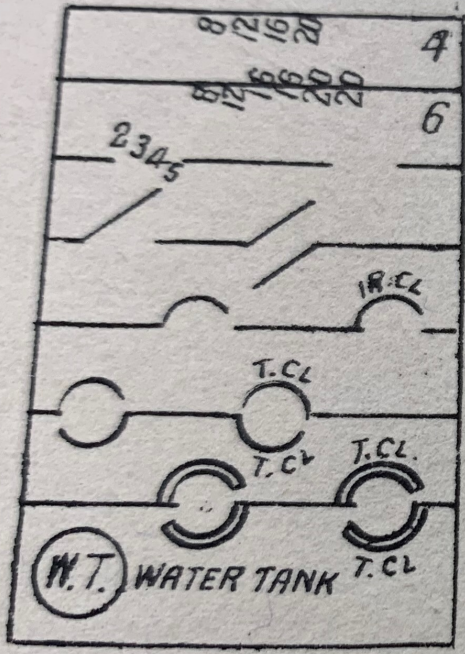




-  SHINGLE ROOF
-  BRICK 1<sup>ST</sup>
-  D = DWELLING
-  F = FLAT
-  S = STORE

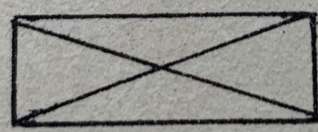
Brick veneered building  
 Brick and frame "  
 Frame building  
 " " iron clad  
 Stone building

Windows 1<sup>st</sup> & 2<sup>d</sup> with iron shutters  
 tin clad shutters, and 5<sup>th</sup> & 6<sup>th</sup> with  
 HORIZONTAL UP.B VERTICAL Steam b  
 BRICK IR.CH IRON Chimneys F.P. Fr  
 6" W. PIPE Water pipes an  
 SINGLE D.H DOUBLE T.H TRIPLE Hyd

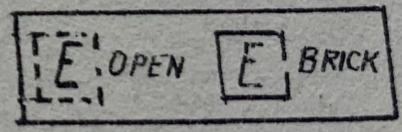


Figures-8,12,16,20 - indicate thickness of wall in inches.  
 Wall without opening and size in inches  
 " with openings Figures indicate on which floor.  
 Openings with wired glass doors.

" " single iron or iron clad doors.  
 " " double " " tin clad doors  
 " " standard steel vault doors, or standa

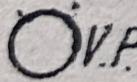
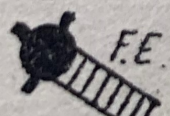
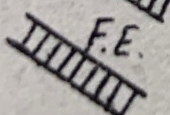


Stable



Elevators

[FE] Frame enclosed elevator  
 [ET] " " "  
 [ESC] " " "  
 [ET] Brick " "  
 [ESC] " " "

 V.P. Vertical pipe or stand pipe  
 FE " " with fire escape  
 F.E. Fire escape  
 AFA Automatic fire alarm.  
 I.E.P. Independent electric plant

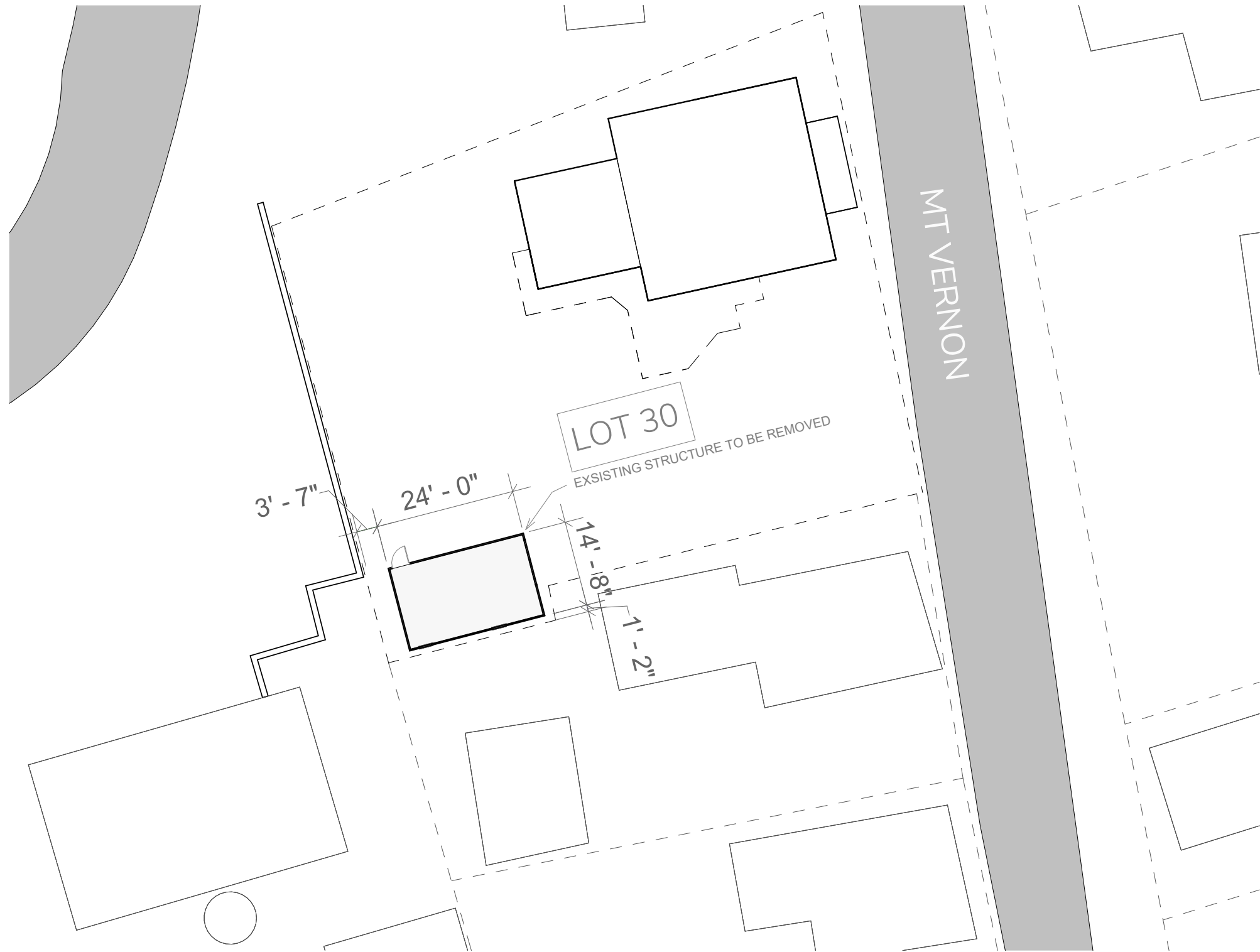




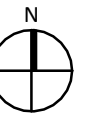




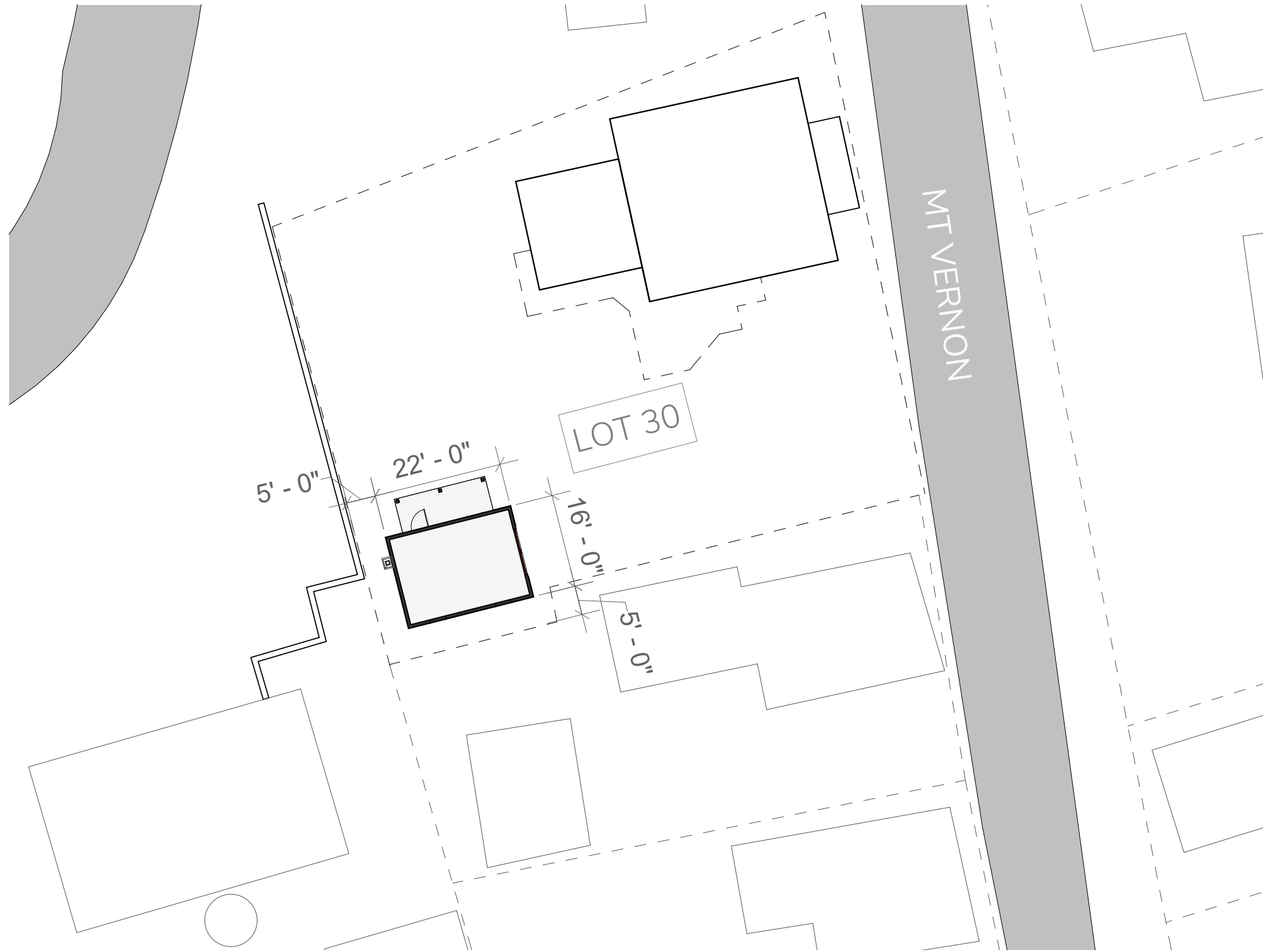




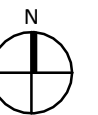
EXISTING SITE PLAN  
1/16" = 1'-0"







PROPOSED SITE PLAN  
1/16" = 1'-0"







EXISTING EAST ELEVATION  
1/4" = 1'-0"

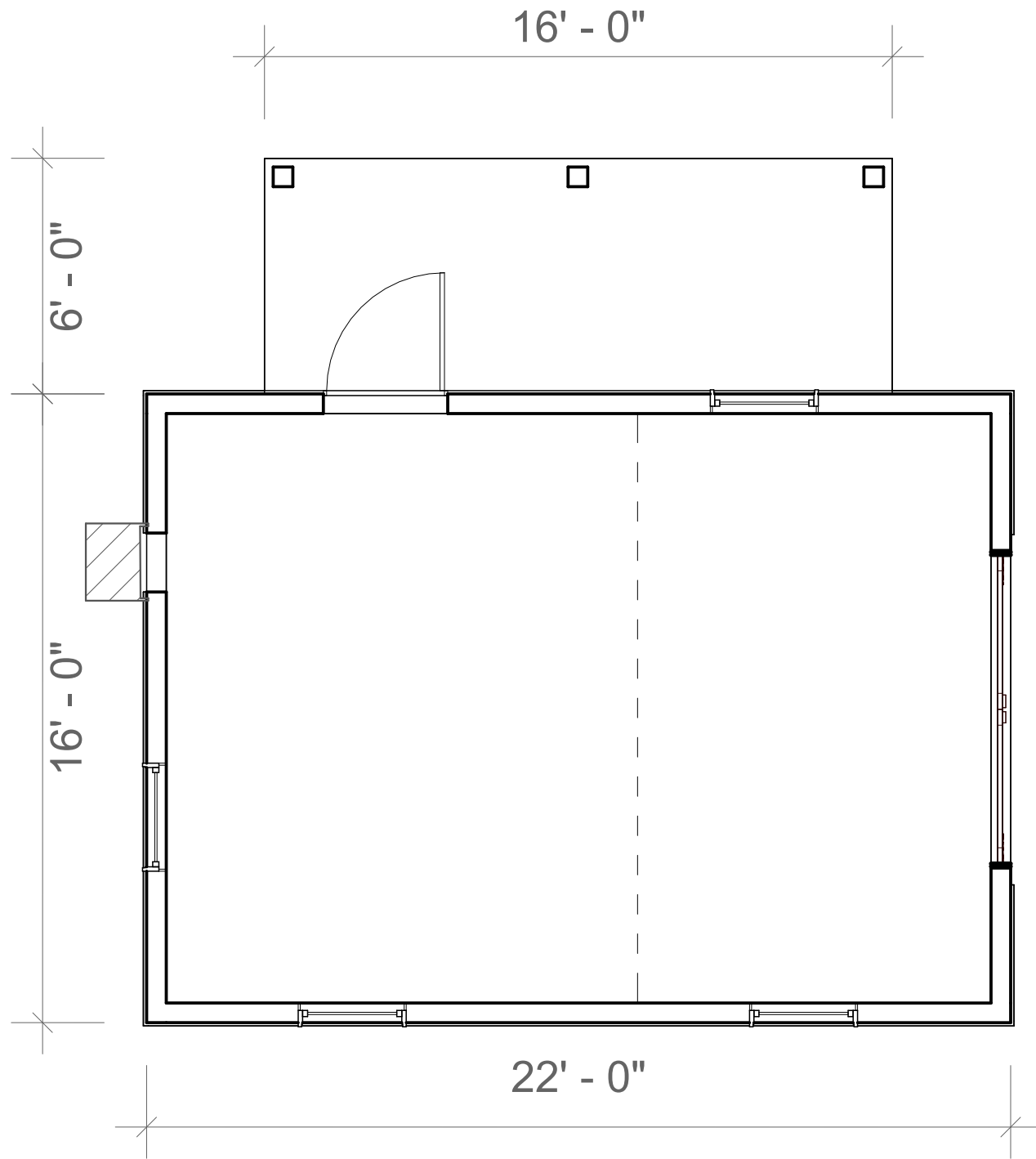
EXISTING WEST ELEVATION  
1/4" = 1'-0"



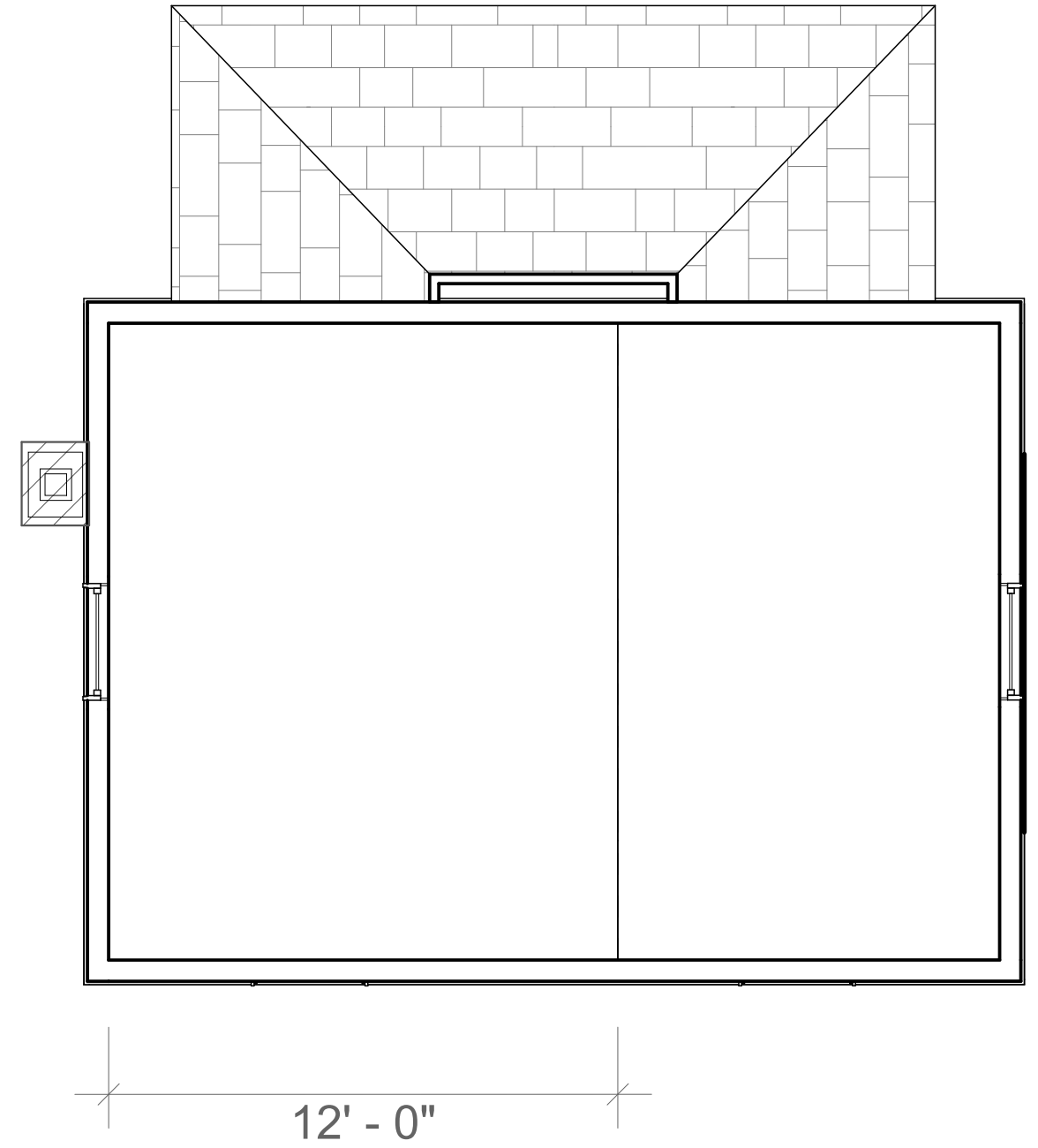
EXISTING NORTH ELEVATION  
1/4" = 1'-0"

EXISTING SOUTH ELEVATION  
1/4" = 1'-0"

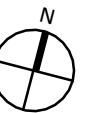




PROPOSED FIRST FLOOR PLAN  
1/4" = 1'-0"

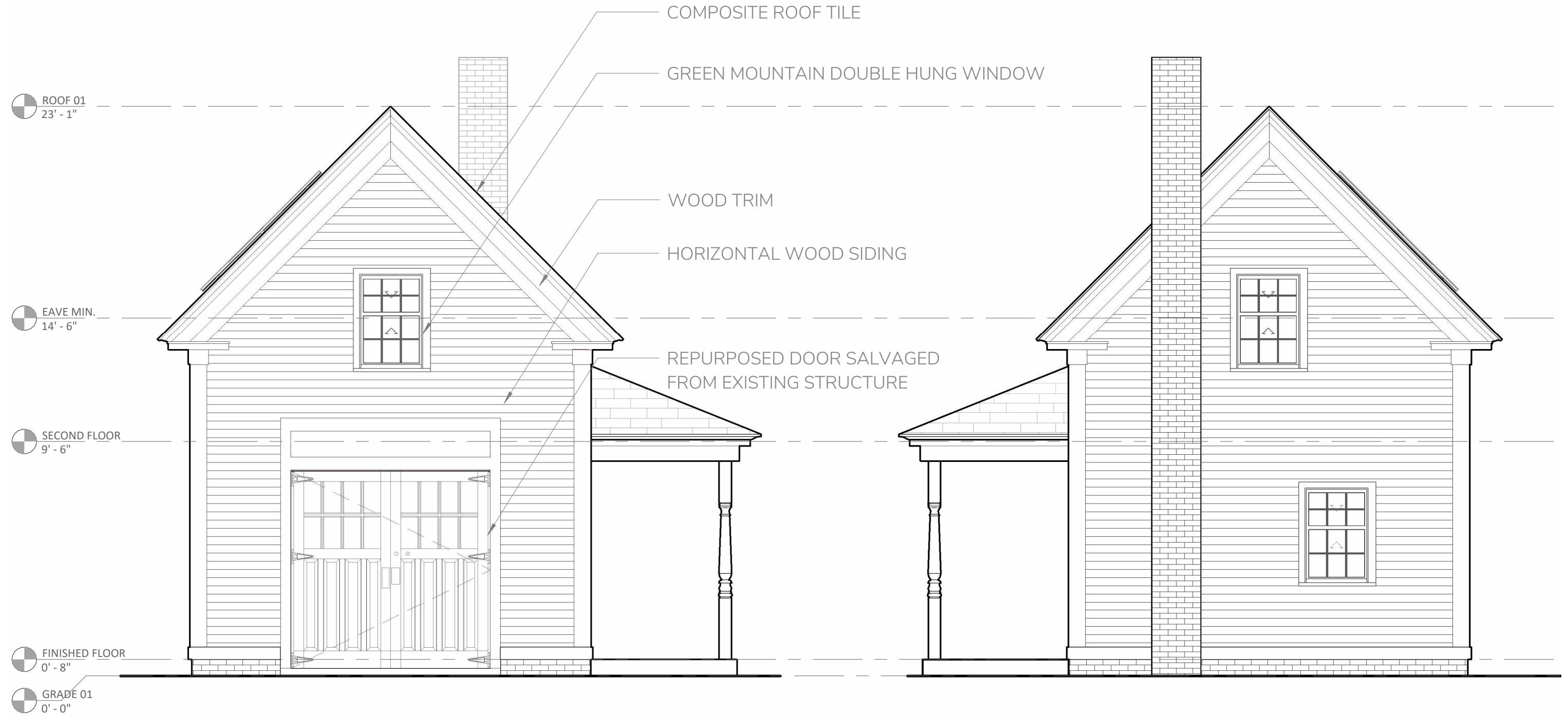


PROPOSED SECOND FLOOR PLAN  
1/4" = 1'-0"





# PROPOSED EAST + WEST ELEVATION



PROPOSED EAST ELEVATION  
1/4" = 1'-0"

PROPOSED WEST ELEVATION  
1/4" = 1'-0"





PROPOSED NORTH ELEVATION  
1/4" = 1'-0"



PROPOSED SOUTH ELEVATION  
1/4" = 1'-0"





East Facade



West Facade



Existing Shed to Be Demolished  
North Facade



South Facade