

⊙ SOUTHWEST, LEFTSIDE ELEVATION, SOLAR ARRAY & GENERATOR LOCATION
SCALE: 3/16" = 1'-0"

⊙ GENERATOR LOCATION PLAN
SCALE: 3/16" = 1'-0"

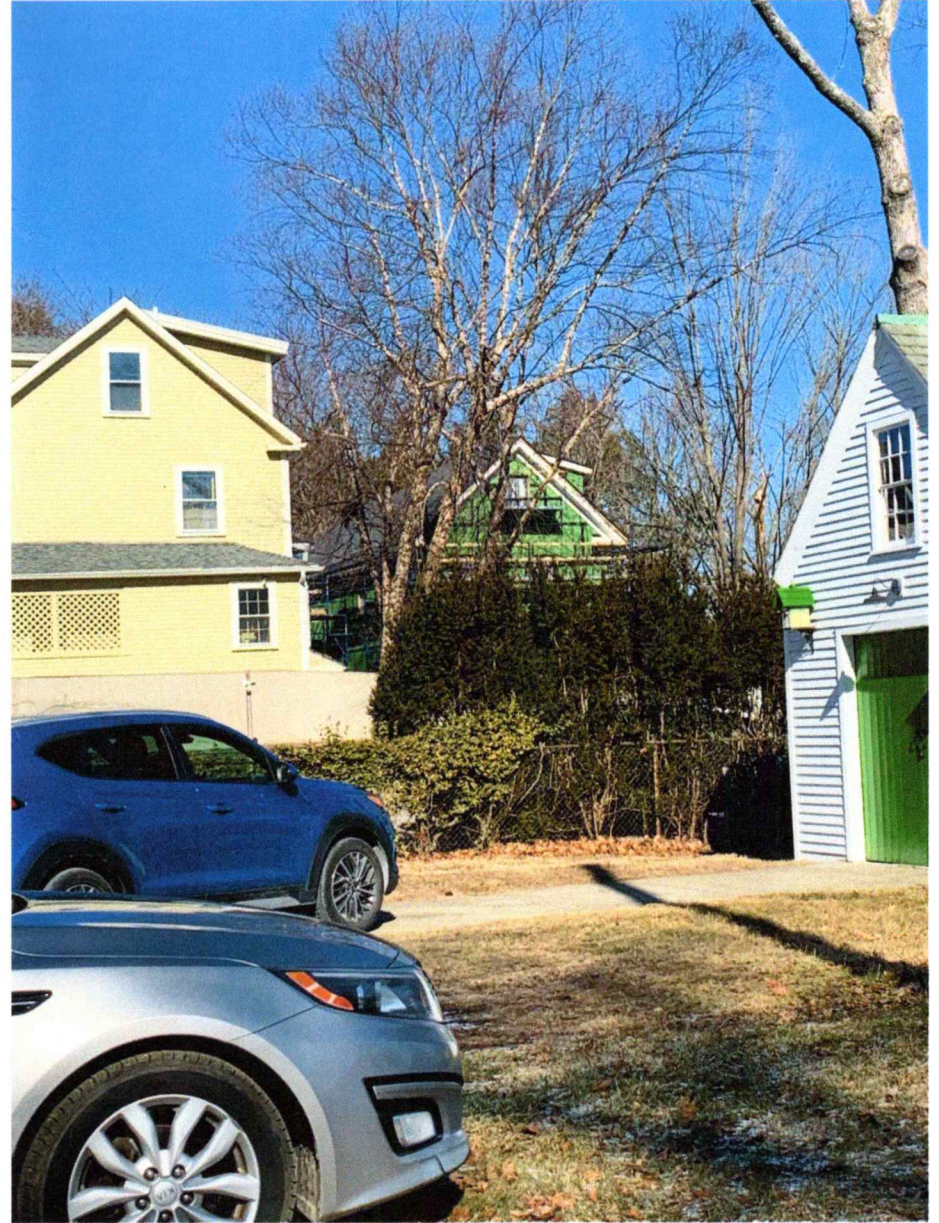
MDC ADMINISTRATIVE APPROVAL

1. ADD 16 PANEL SOLAR ARRAY TO SOUTHWEST ROOF
2. ADD GENERATOR 18" OFF WALL NEXT TO HEAT PUMP ENCLOSURE
3. DELETE FAUX CHIMNEY
4. REPLACE EXISTING WOOD PANEL & CHAIN LINK FENCING AT REAR REAR PROPERTY LINE & ALONG RIGHT SIDE OF GARAGE
5. CHANGE OVERHEAD DOOR TO INSULATED ALUMINUM 'INFINITY CLASSIC'.

<p>MDC ADMIN. APPROVAL</p> <p>ANNE WHITNEY ARCHITECT</p> <p>ADDITIONS & RENOVATIONS, HOLMES/GOLDSBERRY RESIDENCE</p> <p>45 RICHMOND STREET PORTSMOUTH, NH</p>	<p>801 Islington St, Suite 32 Portsmouth NH 03801 603-502-4387 archwhit@aol.com</p>	<p>Project: 2008</p>	<p>Date: 2/14/24</p>
	<p>Revisions:</p>		



View of Solar Roof from Richmond Street



View of Solar Roof from Hancock Street

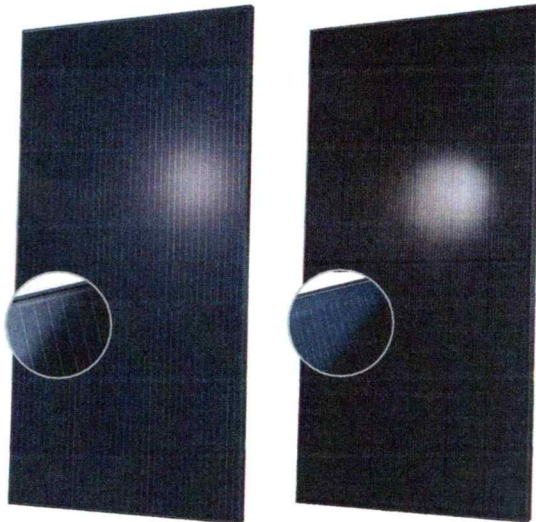
45 Richmond Street

Q.PEAK DUO BLK ML-G10+ SERIES



385-410 Wp | 132 Cells
20.9% Maximum Module Efficiency

MODEL Q.PEAK DUO BLK ML-G10+



6 busbar cell technology

12 busbar cell technology



Breaking the 20% efficiency barrier

Q.ANTUM DUO Z Technology with zero gap cell layout boosts module efficiency up to 20.9%.



A reliable investment

Inclusive 25-year product warranty and 25-year linear performance warranty¹.



Enduring high performance

Long-term yield security with Anti LeTID Technology, Anti PID Technology² and Hot-Spot Protect.



Extreme weather rating

High-tech aluminium alloy frame, certified for high snow (5400 Pa) and wind loads (4000 Pa).



Innovative all-weather technology

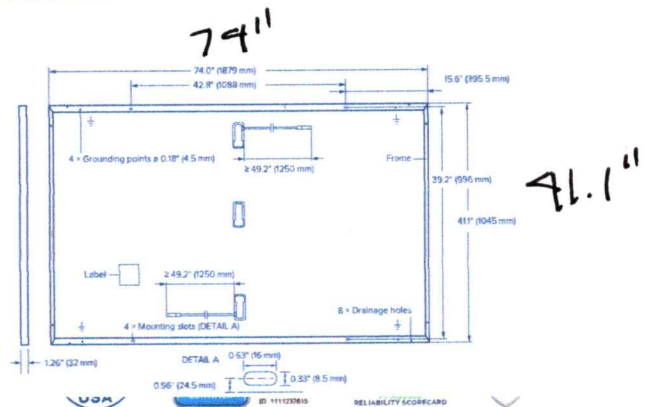
Optimal yields, whatever the weather with excellent low-light and temperature behaviour.

Q.PEAK DUO BLK ML-G10+ SERIES

Mechanical Specification

Format	74.0 in × 41.1 in × 1.26 in (including frame) (1879 mm × 1045 mm × 32 mm)
Weight	48.5 lbs (22.0 kg)
Front Cover	0.13 in (3.2 mm) thermally pre-stressed glass with anti-reflection technology
Back Cover	Composite film
Frame	Black anodised aluminium
Cell	6 × 22 monocrystalline Q.ANTUM solar half cells
Junction box	2.09-3.98 in × 1.26-2.36 in × 0.59-0.71 in (53-101 mm × 32-60 mm × 15-18 mm), IP67, with bypass diodes
Cable	4 mm ² Solar cable; (+) ≥ 49.2 in (1250 mm), (-) ≥ 49.2 in (1250 mm)
Connector	Stäubli MC4, IP68

residential buildings



20/22/24 kW

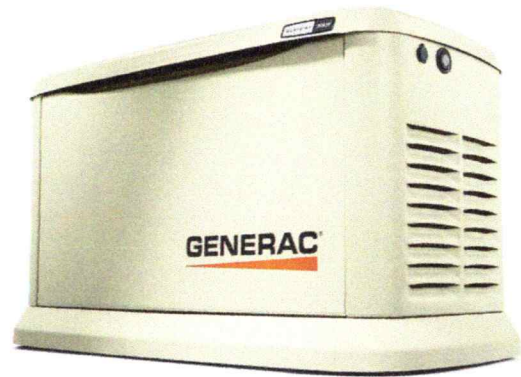
GUARDIAN® SERIES Residential Standby Generators Air-Cooled Gas Engine

INCLUDES:

- True Power™ Electrical Technology
- Two-line multilingual digital LCD Evolution™ controller (English/Spanish/French/Portuguese)
- 200 amp service rated transfer switch available
- Electronic governor
- Standard Wi-Fi® connectivity
- System status & maintenance interval LED indicators
- Sound attenuated enclosure
- Flexible fuel line connector
- Natural gas or LP gas operation
- 5 Year limited warranty
- Listed and labeled for installation as close as 18 in (457 mm) to a structure.*
**Must be located away from doors, windows, and fresh air intakes and in accordance with local codes.*

Standby Power Rating

G007038-1, G007039-1, G007038-3, G007039-3 (Aluminum - Bisque) - 20 kW 60 Hz
 G007042-10, G007042-11, G007043-10, G007043-11 (Aluminum - Bisque) - 22 kW 60 Hz
 G007209-10, G007210-10 (Aluminum - Bisque) - 24 kW 60 Hz

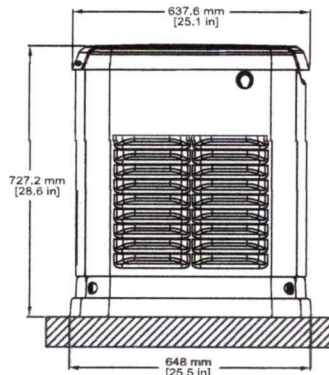


Product shown with optional fascia kit

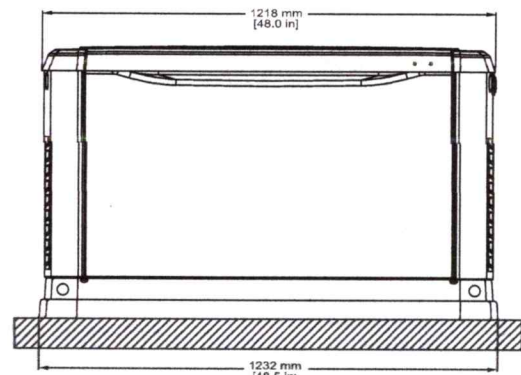


Dimensions & UPCs

Model	UPC
G007038	696471074185
G007039	696471074192
G007042	696471074208
G007043	696471074215
G007209	696471071511
G007210	696471084801



LEFT SIDE VIEW



FRONT VIEW

Dimensions shown are approximate. See installation manual for exact dimensions. DO NOT USE THESE DIMENSIONS FOR INSTALLATION PURPOSES.

Dealer Name
Eastern Door Supply

Reference Number
328199.2.04578353

Date
February 6, 2024

PO Number/Job Name

Quantity
1

Product: INFINITY CLASSIC

Size: 9-0 X 7-6

Model: I203S

Frame: INSULATED

Overall Thickness: 2"

Layout: 3 SECTION, 2 PANEL

Finish: WHITE POLYCRON III (P12)

Bot/int Glazing: SMOOTH ALUMINUM INSULATED PANEL

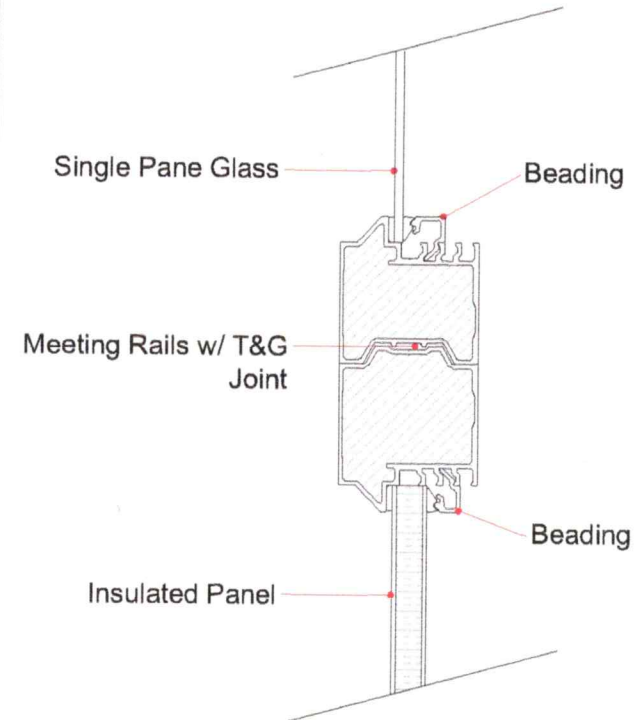
Top Glazing: 1/8" CLEAR TEMPERED

Hardware: 15R



*SIMILAR
DOOR*

Infinity Classic Insulated Frame Insulated Sandwiched Panels Single Pane Glass



Door Construction Detail

Consumer Name: Overhead Door Of Portsmou
Consumer Email: Jtrue@ohdmenh.com
Consumer Phone: 603-431-2474

