



South View



North View



Proposed HVAC condenser location



East view







West View

Applicant:

Keith Dockham & Jeff Kisiel  
Dockham Builders, Inc  
2060 Lafayette Road  
Portsmouth, NH 03801

Property:

44 Gardner Street  
Portsmouth, NH 03801

Property Owner:

Bernie and Emily Roesler

- I. Letter of Authorization
- II. Scope of work
- III. Window Replacement
- IV. Siding & Exterior Trim
- V. HVAC & Venting



I. Letter of Authorization:

See attached Letter of Authorization.



"Building your Future" Since 1988  
2069 Lafayette Road Unit B  
Portsmouth, NH 03801

Member NAHB  
Lead safety certified  
Member HBRANH  
Email: [office@dockhambuilders.com](mailto:office@dockhambuilders.com)  
Telephone: 603-775-7035

March 14, 2023

City of Portsmouth  
Historic District Commission  
Ms. Reagan Ruedig, Chair  
1 Junkins Avenue  
Portsmouth, NH 03801

RE: 44 Gardner Street Historic District Application

To whom it may concern:

This letter is submitted to authorize Jeff Kisiel and Dockham Builders to represent us before the City of Portsmouth and any of its boards with respect to an Application to the Historic District Commission in connection with our property located at 44 Gardner Street.

Sincerely,

  
Emily Roesler

March 15, 2024

Date

  
Bernie Roesler

March 15, 2024

Date

[www.dockhambuilders.com](http://www.dockhambuilders.com)

## II. Project Summary:

The proposed scope of work includes:

-Remove the existing wood siding, exterior corner trim, window casing and windows

-Install new windows (III. Window Replacement), new siding (IV. Siding & Exterior Trim)

-Install new HVAC system, kitchen range hood and Bathroom Fans with vents (V. HVAC & Venting)

### III. Window Replacement:

Install new Marvin Ultimate Windows on entire house.

See attached schedule and specification sheet for window details.

# DOCKHAM 022024 ROESLER

Quote #: R3HN2NG

A Proposal for Window and Door Products prepared for:

**Job Site:**

03801

**Shipping Address:**

ELDREDGE LBR & HDWE-PORTSMOUTH  
275 Constitution Ave  
Portsmouth, NH 03801-8600

**Project Description:**

44 GARDNER STREET PORTSMOUTH NH

**Featuring products from:**

**MARVIN** 

## SELECTWOOD

*The Choice For Building Professionals.*

TOM MCELREAVY  
ELDREDGE LBR & HDWE-PORTSMOUTH  
PO BOX 69  
CAPE NEDDICK, ME 03902-0069  
Phone: (603) 436-9663

Email: [tmcelreavy@eldredgelumber.com](mailto:tmcelreavy@eldredgelumber.com)

This report was generated on 2/21/2024 9:36:25 AM using the Marvin Order Management System, version 0004.06.00 (Current). Price in USD. Unit availability and price are subject to change. Dealer terms and conditions may apply.

## UNIT SUMMARY

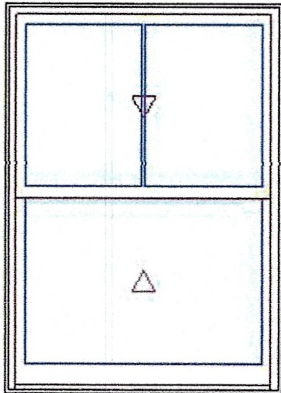
The following is a schedule of the windows and doors for this project. For additional unit details, please see Line Item Quotes.  
 Additional charges, tax or Terms and Conditions may apply. Detail pricing is per unit.

| NUMBER OF LINES: 9 |                   | TOTAL UNIT QTY: 33 |  | EXT NET PRICE: USD [REDACTED] |     |                    |
|--------------------|-------------------|--------------------|--|-------------------------------|-----|--------------------|
| LINE               | MARK UNIT         | PRODUCT LINE       | ITEM   | NET PRICE                     | QTY | EXTENDED NET PRICE |
| 1                  | KIT/ENTRY         | Ultimate           | Double Hung G2<br>RO 47" X 64"<br>Entered as<br>RO 47" X 64"         | [REDACTED]                    | 1   | [REDACTED]         |
| 2                  | 1ST FLR           | Ultimate           | Double Hung G2<br>RO 36" X 66"<br>Entered as<br>RO 36" X 66"         | [REDACTED]                    | 11  | [REDACTED]         |
| 3                  | KITCHEN SINK      | Ultimate           | Marvin Assembly<br>RO 67 63/64" X 46"<br>Entered as<br>Size by Units | [REDACTED]                    | 1   | [REDACTED]         |
| 4                  | 1ST FLR BATH      | Ultimate           | Double Hung G2<br>RO 33" X 66"<br>Entered as<br>RO 33" X 66"         | [REDACTED]                    | 1   | [REDACTED]         |
| 5                  | STAIRS /FULL TEMP | Ultimate           | Double Hung G2<br>RO 36" X 62"<br>Entered as<br>RO 36" X 62"         | [REDACTED]                    | 1   | [REDACTED]         |
| 6                  | 2ND FLR           | Ultimate           | Double Hung G2<br>RO 36" X 62"<br>Entered as<br>RO 36" X 62"         | [REDACTED]                    | 14  | [REDACTED]         |
| 7                  | 3RD FLR BATH      | Ultimate           | Double Hung G2<br>RO 36" X 62"<br>Entered as<br>RO 36" X 62"         | [REDACTED]                    | 1   | [REDACTED]         |
| 8                  | 3RD FLR           | Ultimate           | Double Hung G2<br>RO 36" X 58"<br>Entered as<br>RO 36" X 58"         | [REDACTED]                    | 2   | [REDACTED]         |
| 9                  | PLAYROOM          | Ultimate           | Double Hung G2<br>RO 34" X 62"<br>Entered as<br>RO 34" X 62"         | [REDACTED]                    | 1   | [REDACTED]         |

## LINE ITEM QUOTES

The following is a schedule of the windows and doors for this project. For additional unit details, please see Line Item Quotes. Additional charges, tax or Terms and Conditions may apply. Detail pricing is per unit.

|         |                      |                 |     |
|---------|----------------------|-----------------|-----|
| Line #1 | Mark Unit: KIT/ENTRY | Net Price:      |     |
| Qty: 1  |                      | Ext. Net Price: | USD |



As Viewed From The Exterior

Entered As: RO  
 MO 46 1/2" X 63 3/4"  
 FS 46" X 63 1/2"  
 RO 47" X 64"  
**Egress Information**  
 Width: 42 13/32" Height: 26 25/64"  
 Net Clear Opening: 7.77 SqFt

Stone White Clad Exterior  
 Painted Interior Finish - White - Pine Interior  
 Ultimate Double Hung G2  
 Rough Opening 47" X 64"  
 Standard CN Height 28  
 Top Sash  
 Stone White Clad Sash Exterior  
 Painted Interior Finish - White - Pine Sash Interior  
 IG  
 Low E2 w/Argon  
 Black Perimeter and Spacer Bar  
 5/8" SDL - With Spacer Bar - Black  
 Rectangular - Special Cut 2W1H  
 Stone White Clad Ext - Painted Interior Finish - White - Pine Int  
 Ogee Interior Glazing Profile  
 Bottom Sash  
 Stone White Clad Sash Exterior  
 Painted Interior Finish - White - Pine Sash Interior  
 IG - 1 Lite  
 Tempered Low E2 w/Argon  
 Black Perimeter Bar  
 Ogee Interior Glazing Profile  
 White Interior Weather Strip Package  
 White Exterior Weather Strip Package  
 White Sash Lock  
 White Top Sash Strike Plate Assembly Color  
 Extruded Aluminum Screen  
 Stone White Surround  
 Bright View Mesh  
 \*\*\*Screen/Combo Ship Loose  
 4 9/16" Jamb  
 Nailing Fin  
**\*\*\*Note: Unit Availability and Price is Subject to Change**

Initials required

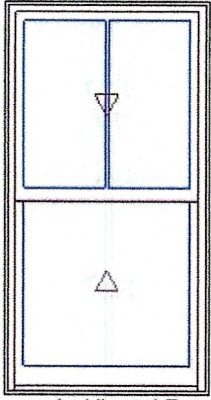
Seller: \_\_\_\_\_

Buyer: \_\_\_\_\_

|         |                    |                 |     |
|---------|--------------------|-----------------|-----|
| Line #2 | Mark Unit: 1ST FLR | Net Price:      |     |
| Qty: 11 |                    | Ext. Net Price: | USD |



Stone White Clad Exterior  
 Painted Interior Finish - White - Pine Interior  
 Ultimate Double Hung G2  
 Rough Opening 36" X 66"  
 Top Sash  
 Stone White Clad Sash Exterior  
 Painted Interior Finish - White - Pine Sash Interior  
 IG  
 Low E2 w/Argon  
 Black Perimeter and Spacer Bar  
 5/8" SDL - With Spacer Bar - Black  
 Rectangular - Special Cut 2W1H  
 Stone White Clad Ext - Painted Interior Finish - White - Pine Int  
 Ogee Interior Glazing Profile



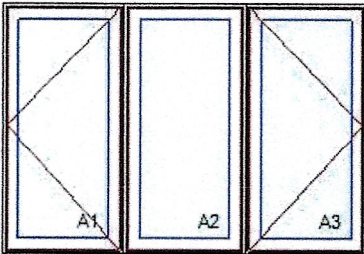
As Viewed From The Exterior

Entered As: RO  
 MO 35 1/2" X 65 3/4"  
 FS 35" X 65 1/2"  
 RO 36" X 66"  
**Egress Information**  
 Width: 31 13/32" Height: 27 11/16"  
 Net Clear Opening: 6.04 SqFt

Bottom Sash  
 Stone White Clad Sash Exterior  
 Painted Interior Finish - White - Pine Sash Interior  
 IG - 1 Lite  
 Tempered Low E2 w/Argon  
 Black Perimeter Bar  
 Ogee Interior Glazing Profile  
 White Interior Weather Strip Package  
 White Exterior Weather Strip Package  
 White Sash Lock  
 White Top Sash Strike Plate Assembly Color  
 Extruded Aluminum Screen  
 Stone White Surround  
 Bright View Mesh  
 \*\*\*Screen/Combo Ship Loose  
 4 9/16" Jamb  
 Nailing Fin  
**\*\*\*Note: Unit Availability and Price is Subject to Change**

Initials required  
 Seller: \_\_\_\_\_  
 Buyer: \_\_\_\_\_

|         |                         |                 |     |
|---------|-------------------------|-----------------|-----|
| Line #3 | Mark Unit: KITCHEN SINK | Net Price:      |     |
| Qty: 1  |                         | Ext. Net Price: | USD |



As Viewed From The Exterior

Entered As: Size by Units  
 MO 67 31/64" X 45 3/4"  
 FS 66 63/64" X 45 1/2"  
 RO 67 63/64" X 46"  
**Egress Information A1, A3**  
 Width: 15 7/32" Height: 40 25/64"  
 Net Clear Opening: 4.27 SqFt  
**Egress Information A2**  
 No Egress Information available.

Stone White Clad Exterior  
 Painted Interior Finish - White - Pine Interior  
 3W1H - Rectangle Assembly  
 Assembly Rough Opening  
 67 63/64" X 46"

Unit: A1  
 Ultimate Casement - Left Hand  
 Basic Frame 22 21/64" X 45 1/2"  
 Rough Opening 23 21/64" X 46"  
 Stone White Clad Sash Exterior  
 Painted Interior Finish - White - Pine Sash Interior  
 IG - 3/4" - 1 Lite  
 Tempered Low E2 w/Argon  
 Black Perimeter Bar  
 Ogee Interior Glazing Profile  
 Standard Bottom Rail  
 White Weather Strip  
 White Folding Handle  
 White Multi - Point Lock  
 Stainless Steel Hardware  
 Aluminum Screen  
 White Surround  
 Bright View Mesh  
 \*\*\*Screen/Combo Ship Loose

Unit: A2  
 Ultimate Casement - Stationary  
 Basic Frame 22 21/64" X 45 1/2"  
 Rough Opening 23 21/64" X 46"  
 Stone White Clad Sash Exterior  
 Painted Interior Finish - White - Pine Sash Interior  
 IG - 3/4" - 1 Lite  
 Tempered Low E2 w/Argon  
 Black Perimeter Bar  
 Ogee Interior Glazing Profile  
 Standard Bottom Rail  
 White Weather Strip  
 Solid Wood Covers



Unit: A3  
 Ultimate Casement - Right Hand  
 Basic Frame 22 21/64" X 45 1/2"  
 Rough Opening 23 21/64" X 46"  
 Stone White Clad Sash Exterior  
 Painted Interior Finish - White - Pine Sash Interior  
 IG - 3/4" - 1 Lite  
 Tempered Low E2 w/Argon  
 Black Perimeter Bar  
 Ogee Interior Glazing Profile  
 Standard Bottom Rail  
 White Weather Strip  
 White Folding Handle  
 White Multi - Point Lock  
 Stainless Steel Hardware  
 Aluminum Screen  
 White Surround  
 Bright View Mesh  
 \*\*\*Screen/Combo Ship Loose  
 Standard Mull Charge  
 4 9/16" Jambs  
 Nailing Fin  
 \*\*\*Note: This configuration meets a minimum structural performance of DP 20 through either physical testing or calculations in accordance with AAMA 450 and building code requirements. Mull certification ratings may vary from individual unit certification ratings. Reference the mulling chapter of the ADM for additional information.  
 \*\*\*Note: Unit Availability and Price is Subject to Change

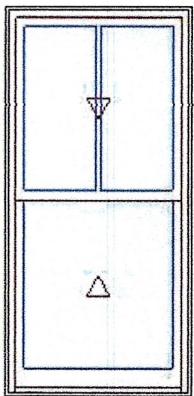
Initials required

Seller: \_\_\_\_\_

Buyer: \_\_\_\_\_

|         |                         |                 |     |  |
|---------|-------------------------|-----------------|-----|--|
| Line #4 | Mark Unit: 1ST FLR BATH | Net Price:      | USD |  |
| Qty: 1  |                         | Ext. Net Price: |     |  |

**MARVIN** 



As Viewed From The Exterior

Entered As: RO  
 MO 32 1/2" X 65 3/4"  
 FS 32" X 65 1/2"  
 RO 33" X 66"

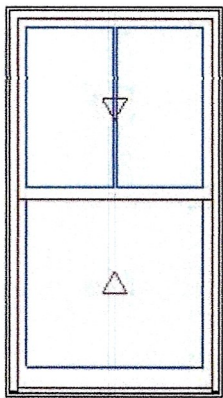
Egress Information  
 Width: 28 13/32" Height: 27 11/16"  
 Net Clear Opening: 5.46 SqFt

Stone White Clad Exterior  
 Painted Interior Finish - White - Pine Interior  
 Ultimate Double Hung G2  
 Rough Opening 33" X 66"  
 Top Sash  
 Stone White Clad Sash Exterior  
 Painted Interior Finish - White - Pine Sash Interior  
 IG  
 Low E2 w/Argon  
 Black Perimeter and Spacer Bar  
 5/8" SDL - With Spacer Bar - Black  
 Rectangular - Special Cut 2W1H  
 Stone White Clad Ext - Painted Interior Finish - White - Pine Int  
 Ogee Interior Glazing Profile  
 Bottom Sash  
 Stone White Clad Sash Exterior  
 Painted Interior Finish - White - Pine Sash Interior  
 IG - 1 Lite  
 Tempered Low E2 w/Argon  
 Black Perimeter Bar  
 Ogee Interior Glazing Profile  
 White Interior Weather Strip Package  
 White Exterior Weather Strip Package  
 White Sash Lock  
 White Top Sash Strike Plate Assembly Color  
 Extruded Aluminum Screen  
 Stone White Surround  
 Bright View Mesh  
 \*\*\*Screen/Combo Ship Loose  
 4 9/16" Jambs

Nailing Fin  
**\*\*\*Note: Unit Availability and Price is Subject to Change**

Initials required  
 Seller: \_\_\_\_\_  
 Buyer: \_\_\_\_\_

|         |                              |                 |     |
|---------|------------------------------|-----------------|-----|
| Line #5 | Mark Unit: STAIRS /FULL TEMP | Net Price:      |     |
| Qty: 1  |                              | Ext. Net Price: | USD |



As Viewed From The Exterior

Entered As: RO  
 MO 35 1/2" X 61 3/4"  
 FS 35" X 61 1/2"  
 RO 36" X 62"  
**Egress Information**  
 Width: 31 13/32" Height: 25 11/16"  
 Net Clear Opening: 5.60 SqFt

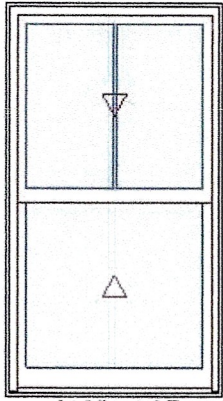
Stone White Clad Exterior  
 Painted Interior Finish - White - Pine Interior  
 Ultimate Double Hung G2  
 Rough Opening 36" X 62"  
 Top Sash  
 Stone White Clad Sash Exterior  
 Painted Interior Finish - White - Pine Sash Interior  
 IG  
 Tempered Low E2 w/Argon  
 Black Perimeter and Spacer Bar  
 5/8" SDL - With Spacer Bar - Black  
 Rectangular - Special Cut 2W1H  
 Stone White Clad Ext - Painted Interior Finish - White - Pine Int  
 Ogee Interior Glazing Profile  
 Bottom Sash  
 Stone White Clad Sash Exterior  
 Painted Interior Finish - White - Pine Sash Interior  
 IG - 1 Lite  
 Tempered Low E2 w/Argon  
 Black Perimeter Bar  
 Ogee Interior Glazing Profile  
 White Interior Weather Strip Package  
 White Exterior Weather Strip Package  
 White Sash Lock  
 White Top Sash Strike Plate Assembly Color  
 Extruded Aluminum Screen  
 Stone White Surround  
 Bright View Mesh  
 \*\*\*Screen/Combo Ship Loose  
 4 9/16" Jamb  
 Nailing Fin  
**\*\*\*Note: Unit Availability and Price is Subject to Change**

Initials required  
 Seller: \_\_\_\_\_  
 Buyer: \_\_\_\_\_

|         |                    |                 |     |
|---------|--------------------|-----------------|-----|
| Line #6 | Mark Unit: 2ND FLR | Net Price:      |     |
| Qty: 14 |                    | Ext. Net Price: | USD |



Stone White Clad Exterior  
 Painted Interior Finish - White - Pine Interior  
 Ultimate Double Hung G2  
 Rough Opening 36" X 62"  
 Top Sash  
 Stone White Clad Sash Exterior  
 Painted Interior Finish - White - Pine Sash Interior  
 IG  
 Low E2 w/Argon  
 Black Perimeter and Spacer Bar  
 5/8" SDL - With Spacer Bar - Black



As Viewed From The Exterior

Entered As: RO  
 MO 35 1/2" X 61 3/4"  
 FS 35" X 61 1/2"  
 RO 36" X 62"  
**Egress Information**  
 Width: 31 13/32" Height: 25 11/16"  
 Net Clear Opening: 5.60 SqFt

Rectangular - Special Cut 2W1H  
 Stone White Clad Ext - Painted Interior Finish - White - Pine Int  
 Ogee Interior Glazing Profile  
 Bottom Sash  
 Stone White Clad Sash Exterior  
 Painted Interior Finish - White - Pine Sash Interior  
 IG - 1 Lite  
 Tempered Low E2 w/Argon  
 Black Perimeter Bar  
 Ogee Interior Glazing Profile  
 White Interior Weather Strip Package  
 White Exterior Weather Strip Package  
 White Sash Lock  
 White Top Sash Strike Plate Assembly Color  
 Extruded Aluminum Screen  
 Stone White Surround  
 Bright View Mesh  
 \*\*\*Screen/Combo Ship Loose

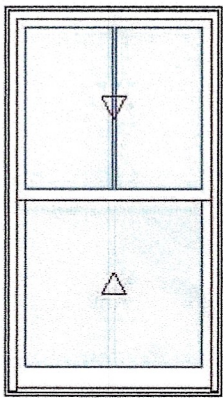
4 9/16" Jamb  
 Nailing Fin  
**\*\*\*Note: Unit Availability and Price is Subject to Change**

Initials required

Seller: \_\_\_\_\_

Buyer: \_\_\_\_\_

|         |                         |                 |     |  |
|---------|-------------------------|-----------------|-----|--|
| Line #7 | Mark Unit: 3RD FLR BATH | Net Price:      | USD |  |
| Qty: 1  |                         | Ext. Net Price: |     |  |



As Viewed From The Exterior

Entered As: RO  
 MO 35 1/2" X 61 3/4"  
 FS 35" X 61 1/2"  
 RO 36" X 62"  
**Egress Information**  
 Width: 31 13/32" Height: 25 11/16"  
 Net Clear Opening: 5.60 SqFt

Stone White Clad Exterior  
 Painted Interior Finish - White - Pine Interior  
 Ultimate Double Hung G2  
 Rough Opening 36" X 62"  
 Top Sash  
 Stone White Clad Sash Exterior  
 Painted Interior Finish - White - Pine Sash Interior  
 IG  
 Low E2 w/Argon  
 Black Perimeter and Spacer Bar  
 5/8" SDL - With Spacer Bar - Black  
 Rectangular - Special Cut 2W1H  
 Stone White Clad Ext - Painted Interior Finish - White - Pine Int  
 Ogee Interior Glazing Profile  
 Bottom Sash  
 Stone White Clad Sash Exterior  
 Painted Interior Finish - White - Pine Sash Interior  
 IG - 1 Lite  
 Tempered Low E2 w/Argon  
 Black Perimeter Bar  
 Ogee Interior Glazing Profile  
 White Interior Weather Strip Package  
 White Exterior Weather Strip Package  
 White Sash Lock  
 White Top Sash Strike Plate Assembly Color  
 Extruded Aluminum Screen  
 Stone White Surround  
 Bright View Mesh  
 \*\*\*Screen/Combo Ship Loose

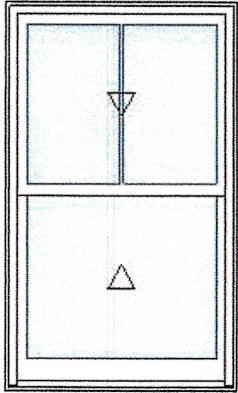
4 9/16" Jamb  
 Nailing Fin  
**\*\*\*Note: Unit Availability and Price is Subject to Change**

Initials required

Seller: \_\_\_\_\_

Buyer: \_\_\_\_\_

|         |                    |                 |     |
|---------|--------------------|-----------------|-----|
| Line #8 | Mark Unit: 3RD FLR | Net Price:      |     |
| Qty: 2  |                    | Ext. Net Price: | USD |



As Viewed From The Exterior

Entered As: RO  
 MO 35 1/2" X 57 3/4"  
 FS 35" X 57 1/2"  
 RO 36" X 58"

Egress Information  
 Width: 31 13/32" Height: 23 11/16"  
 Net Clear Opening: 5.17 SqFt

- Stone White Clad Exterior
- Painted Interior Finish - White - Pine Interior
- Ultimate Double Hung G2
- Rough Opening 36" X 58"
- Top Sash
- Stone White Clad Sash Exterior
- Painted Interior Finish - White - Pine Sash Interior
- IG
- Low E2 w/Argon
- Black Perimeter and Spacer Bar
- 5/8" SDL - With Spacer Bar - Black
- Rectangular - Special Cut 2W1H
- Stone White Clad Ext - Painted Interior Finish - White - Pine Int
- Ogee Interior Glazing Profile
- Bottom Sash
- Stone White Clad Sash Exterior
- Painted Interior Finish - White - Pine Sash Interior
- IG - 1 Lite
- Tempered Low E2 w/Argon
- Black Perimeter Bar
- Ogee Interior Glazing Profile
- White Interior Weather Strip Package
- White Exterior Weather Strip Package
- White Sash Lock
- White Top Sash Strike Plate Assembly Color
- Extruded Aluminum Screen
- Stone White Surround
- Bright View Mesh
- \*\*\*Screen/Combo Ship Loose
- 4 9/16" Jamb
- Nailing Fin

\*\*\*Note: Unit Availability and Price is Subject to Change

Initials required

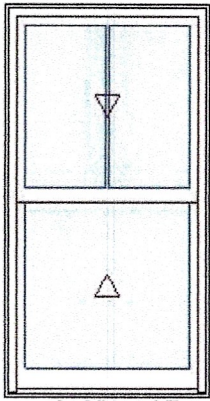
Seller: \_\_\_\_\_

Buyer: \_\_\_\_\_

|         |                     |                 |     |
|---------|---------------------|-----------------|-----|
| Line #9 | Mark Unit: PLAYROOM | Net Price:      |     |
| Qty: 1  |                     | Ext. Net Price: | USD |



- Stone White Clad Exterior
- Painted Interior Finish - White - Pine Interior
- Ultimate Double Hung G2
- Rough Opening 34" X 62"
- Top Sash
- Stone White Clad Sash Exterior
- Painted Interior Finish - White - Pine Sash Interior
- IG
- Low E2 w/Argon
- Black Perimeter and Spacer Bar
- 5/8" SDL - With Spacer Bar - Black
- Rectangular - Special Cut 2W1H
- Stone White Clad Ext - Painted Interior Finish - White - Pine Int
- Ogee Interior Glazing Profile
- Bottom Sash
- Stone White Clad Sash Exterior
- Painted Interior Finish - White - Pine Sash Interior
- IG - 1 Lite
- Tempered Low E2 w/Argon



As Viewed From The Exterior

Entered As: RO

MO 33 1/2" X 61 3/4"

FS 33" X 61 1/2"

RO 34" X 62"

**Egress Information**

Width: 29 13/32" Height: 25 11/16"

Net Clear Opening: 5.25 SqFt

- Black Perimeter Bar
- Ogee Interior Glazing Profile
- White Interior Weather Strip Package
- White Exterior Weather Strip Package
- White Sash Lock
- White Top Sash Strike Plate Assembly Color
- Extruded Aluminum Screen
- Stone White Surround
- Bright View Mesh
- \*\*\*Screen/Combo Ship Loose
- 4 9/16" Jamb
- Nailing Fin
- \*\*\*Note: Unit Availability and Price is Subject to Change

Initials required

Seller: \_\_\_\_\_

Buyer: \_\_\_\_\_

Project Subtotal Net Price: USD

0.000% Sales Tax: USD

Project Total Net Price: USD

██████████

0.00

██████████

## TERMS AND CONDITIONS

## PRODUCT AND PERFORMANCE INFORMATION

### NFRC Ratings:

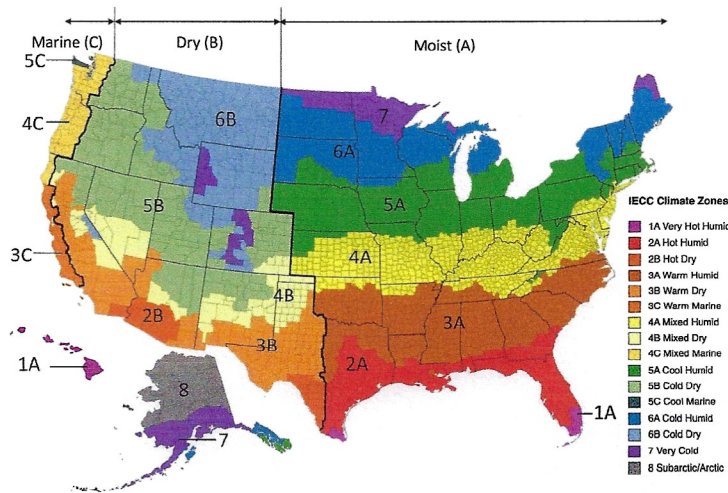
NFRC energy ratings may vary depending on the exact configuration of glass thickness used on the unit. NFRC energy values and ratings may change over time due to ongoing product changes, updated test results or requirements. NFRC values and ratings are finalized on the date of manufacture.

The National Fenestration Rating Council (NFRC) has developed and operates a uniform rating system for the energy performance of fenestration products, including windows, doors and skylights. For additional information regarding this rating system, see [www.nfrc.org](http://www.nfrc.org).

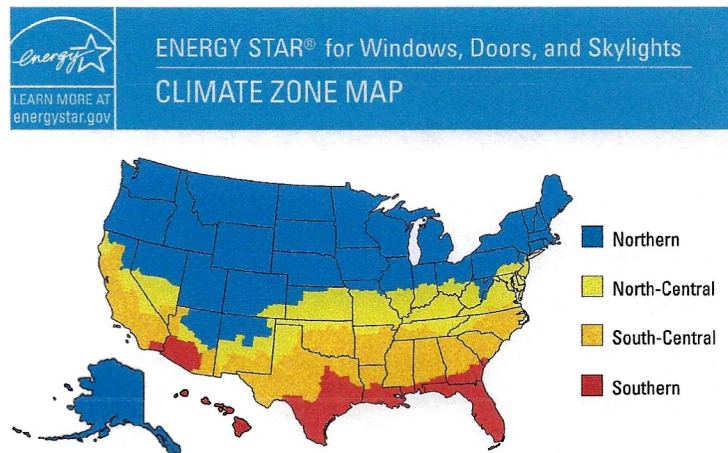
### Code (residential, building or energy) Compliance:

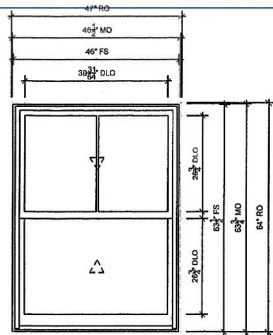
Determining the suitability and compliance with state, provincial, local, or other applicable building codes or standards, including energy codes, is the responsibility of the buyer, user, architect, contractor, installer, and/or other construction professional.

### 2021 IECC Climate Zone Map:



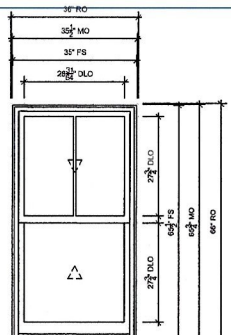
### ENERGY STAR Version 7 Climate Zone Map:





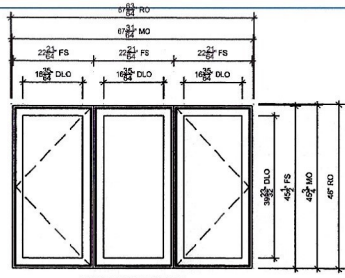
**KIT/ENTRY**  
SCALE: 3/4" = 1'-0"

- ⊕ Head
- ⊕ Divided Lite
- ⊕ Jamb
- ⊕ Checkrail
- ⊕ Sill



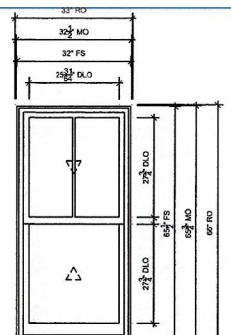
**1ST FLR**  
SCALE: 3/4" = 1'-0"

- ⊕ Head
- ⊕ Sill
- ⊕ Checkrail
- ⊕ Jamb
- ⊕ Divided Lite



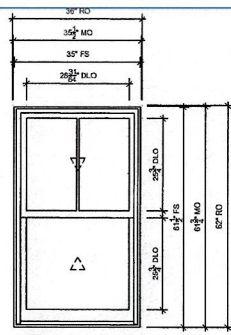
**KITCHEN SINK**  
SCALE: 3/4" = 1'-0"

- ⊕ Head
- ⊕ Vertical Mullion
- ⊕ Head
- ⊕ Sill
- ⊕ Jamb
- ⊕ Sill



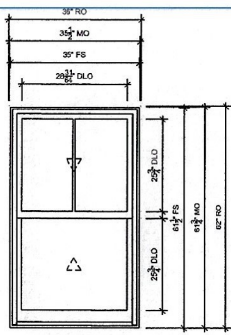
**1ST FLR BATH**  
SCALE: 3/4" = 1'-0"

- ⊕ Head
- ⊕ Sill
- ⊕ Checkrail
- ⊕ Jamb
- ⊕ Divided Lite



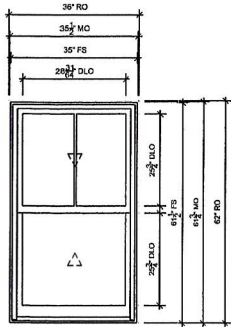
**STAIRS/FULL TEMP**  
SCALE: 3/4" = 1'-0"

- ⊕ Head
- ⊕ Sill
- ⊕ Checkrail
- ⊕ Jamb
- ⊕ Divided Lite



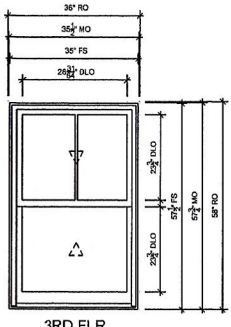
**2ND FLR**  
SCALE: 3/4" = 1'-0"

- ⊕ Head
- ⊕ Sill
- ⊕ Checkrail
- ⊕ Jamb
- ⊕ Divided Lite



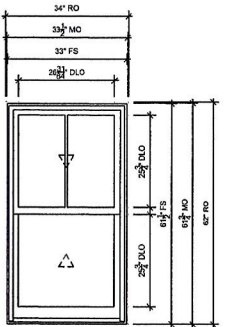
**3RD FLR BATH**  
SCALE: 3/4" = 1'-0"

- ⊕ Head
- ⊕ Sill
- ⊕ Checkrail
- ⊕ Jamb
- ⊕ Divided Lite



**3RD FLR**  
SCALE: 3/4" = 1'-0"

- ⊕ Head
- ⊕ Sill
- ⊕ Checkrail
- ⊕ Jamb
- ⊕ Divided Lite



**PLAYROOM**  
SCALE: 3/4" = 1'-0"

- ⊕ Head
- ⊕ Sill
- ⊕ Checkrail
- ⊕ Jamb
- ⊕ Divided Lite

**GENERAL PRODUCTS WITH REFERENCE TO SHOP DRAWINGS:**  
These shop drawings, a copy of these drawings accompanied by an original set of specifications, are to be used by the Architectural Professional Reference for the purpose of providing information to the fabricator. The fabricator shall be responsible for obtaining all necessary permits and approvals for the installation of the Marvin products included herein and shall be responsible for maintaining product coordination with the drawings.

PROJECT: DOCKHAM 02/2024 / ROESLER  
DISTRIBUTOR: ELDRIDGE LUMBER & HARDWARE, YORK-GO  
DRAWN: TOM MCELREATH  
QUOTEF: RSHRZNG  
PK VERSION: 0004.00.00

REVISION:

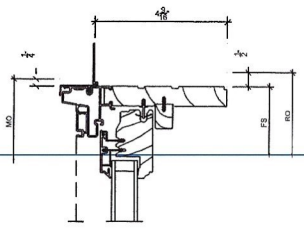
CREATED: 02/21/2024



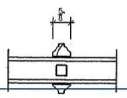
**ORDERING INFORMATION WITH REFERENCE TO SPEC DRAWINGS:**  
 These drawings are for informational purposes only. The purchaser must refer to the architectural drawings and specifications for the correct dimensions and materials. The drawings are not to be used for construction without the written approval of the manufacturer. The manufacturer is not responsible for any errors or omissions in these drawings.

REV/SION: CREATED: 02/21/2024

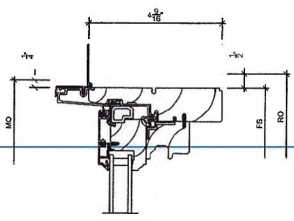
PROJECT: DOCKHAM 022024 / ROESLER  
 DIST/DEALER: ELDRIDGE LUMBER & HARDWARE - YORK-GO  
 DRAWN: TOM MCELREAVY  
 QUOTE# RS1HN2NG PK VERSION: 004L06 00



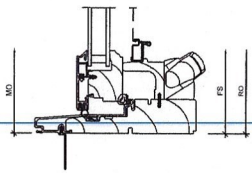
1/2 Head SCALE: 6" = 1'-0"



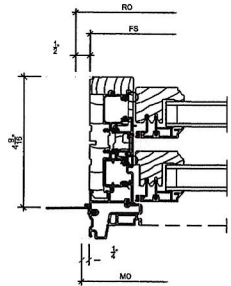
4/2 Divided Lite SCALE: 6" = 1'-0"



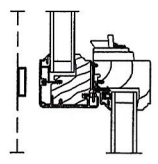
7/2 Head SCALE: 6" = 1'-0"



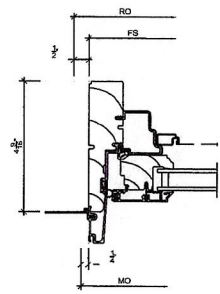
10/2 Sill SCALE: 6" = 1'-0"



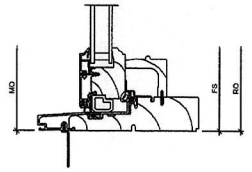
2/2 Jamb SCALE: 6" = 1'-0"



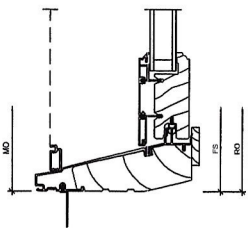
6/2 Checkrail SCALE: 6" = 1'-0"



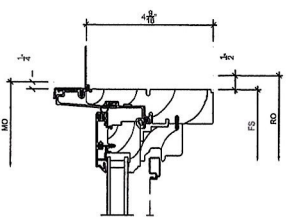
8/2 Jamb SCALE: 6" = 1'-0"



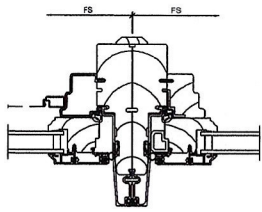
11/2 Sill SCALE: 6" = 1'-0"



3/2 Sill SCALE: 6" = 1'-0"



9/2 Head SCALE: 6" = 1'-0"



8/2 Vertical Mullion SCALE: 6" = 1'-0"

12/2 NOT USED SCALE: 6" = 1'-0"

#### IV. Siding and Exterior Trim

-Remove existing siding and install new 5 1/4" Hardie Plank Siding with smooth finish and a 4" reveal to match existing. See attached Hardie Specification Sheet for more details.

-Remove existing wood trim (corner boards and window casing) and install new Azek PVC trim to match existing profile. See attached Azek Specification Sheet for more details

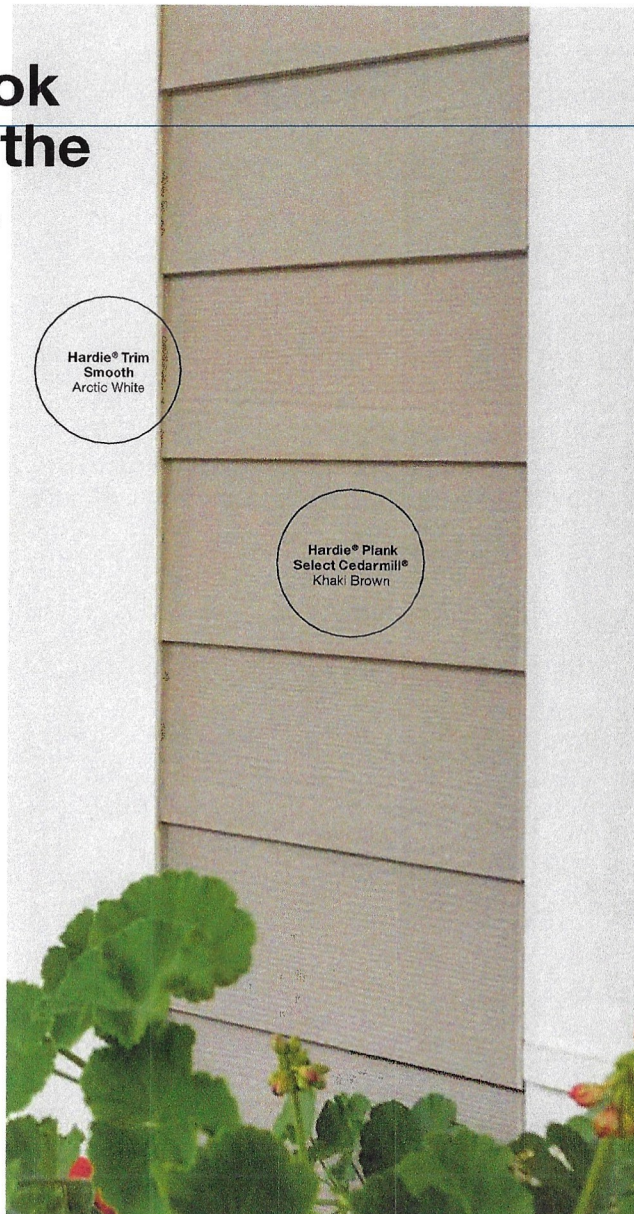
-Corner Board: 5/4" x 6"

-Window Casing: 5/4" x 4" legs, 5/4" x 5" Header, 3" Crown AZM-52, Historic Sill AZM-6930

# A classic look that stands the test of time.

## Hardie® Plank

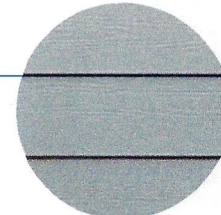
From Victorians to Colonials, Hardie® Plank is the perfect siding for your style, and has the durability and long-lasting beauty that can transform your home exterior. With endless gorgeous color and plank pairings available, you'll discover a Hardie® Plank style that transforms your home's aesthetic.



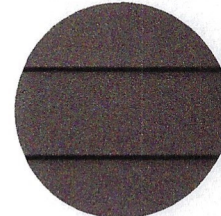
Hardie® Trim  
Smooth  
Arctic White

Hardie® Plank  
Select Cedarmill®  
Khaki Brown

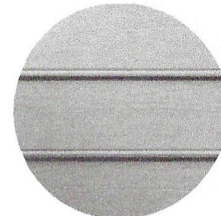
## Hardie® Plank



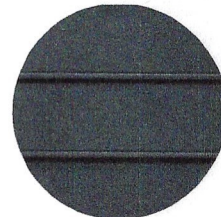
Select Cedarmill®



Smooth



Beaded Select Cedarmill®



Beaded Smooth

| Width                 | Thickness 5/16 in |         |         |         |          | Length 12 ft planks |
|-----------------------|-------------------|---------|---------|---------|----------|---------------------|
|                       | 5.25 in           | 6.25 in | 7.25 in | 8.25 in | 9.25 in* | 12 in*              |
| Exposure              | 4 in              | 5 in    | 6 in    | 7 in    | 8 in     | 10.75 in            |
| Prime Pcs/Pallet      | 360               | 308     | 252     | 230     | 190      | 152                 |
| ColorPlus® Pcs/Pallet | 324               | 280     | 252     | 210     | —        | —                   |
| Pcs/Sq.               | 25.0              | 20.0    | 16.7    | 14.3    | 12.5     | 9.3                 |

### Select Cedarmill®

| Width                 | 5.25 in | 6.25 in | 7.25 in | 8.25 in | 9.25 in* | 12 in* |
|-----------------------|---------|---------|---------|---------|----------|--------|
| Statement Collection* | •       | •       |         |         |          |        |
| Dream Collection*     | •       | •       | •       | •       |          |        |
| Prime                 | •       | •       | •       | •       | •        | •      |

### Smooth

| Width                 | 5.25 in | 6.25 in | 7.25 in | 8.25 in | 9.25 in* | 12 in* |
|-----------------------|---------|---------|---------|---------|----------|--------|
| Statement Collection* | •       | •       |         |         |          |        |
| Dream Collection*     | •       | •       | •       | •       |          |        |
| Prime                 | •       | •       | •       | •       | •        | •      |

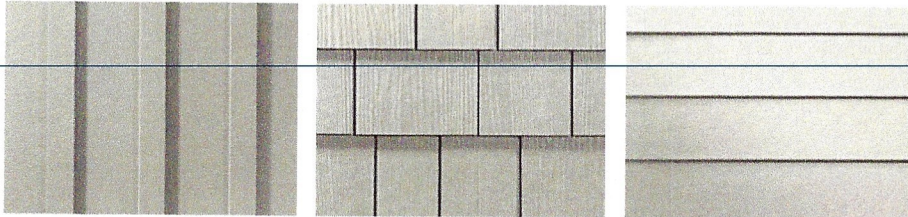
### Beaded Select Cedarmill® & Beaded Smooth

|                       |         |
|-----------------------|---------|
| Width                 | 8.25 in |
| Exposure              | 7 in    |
| ColorPlus® Pcs/Pallet | 210     |
| Pcs/Sq.               | 14.3    |
| Statement Collection* |         |
| Dream Collection*     | •       |
| Prime                 |         |

\*9.25 in and 12 in widths do not feature the drip edge

### STYLES

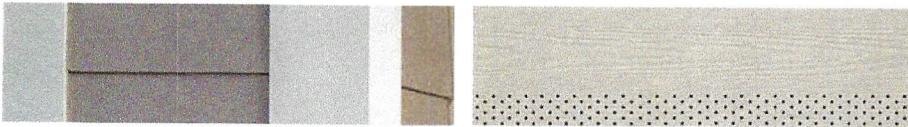
*find your perfect mix of exterior products*



HARDIE® PANEL & HARDIE® TRIM BATTEN

HARDIE® SHINGLE

HARDIE® PLANK



HARDIE® TRIM

HARDIE® SOFFIT

For more detailed product size and availability information, visit [jameshardie.com/magnolia](http://jameshardie.com/magnolia).

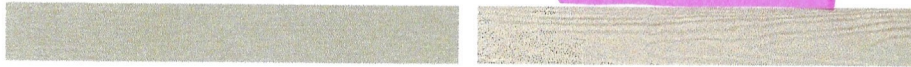
### TEXTURES

*choose the texture you prefer*



HARDIE® TRIM SMOOTH

HARDIE® SIDING SMOOTH\*



HARDIE® TRIM RUSTIC GRAIN

HARDIE® SIDING SELECT CEDARMILL\*\*

\* Textures available for siding and soffit.  
Hardie® Shingle only offered in Select Cedarmill®.

## DESIGN *the* HOME YOU'VE ALWAYS IMAGINED

Visualize Hardie® products on a 3D model of your home with HOVER® Design Studio, brought to you by James Hardie.

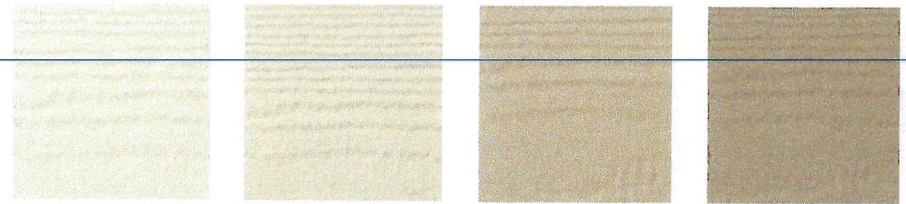
Every home tells a story. What will yours be? Start your free design.



VISUALIZE THE COLLECTION ON YOUR HOME

### COLORS

*select the hue that's right for you*

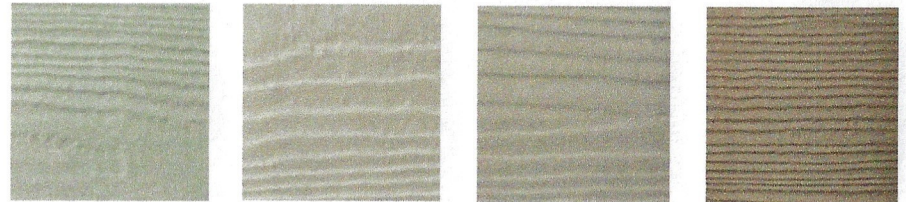


BIRCH TREE

WEATHERED CLIFFS

RUSTIC ROAD

RUGGED PATH

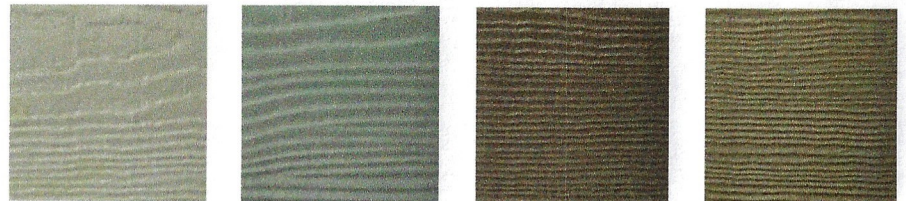


IT'S ABOUT THYME

STONE BEACH

STONE PAVER

WARM CLAY

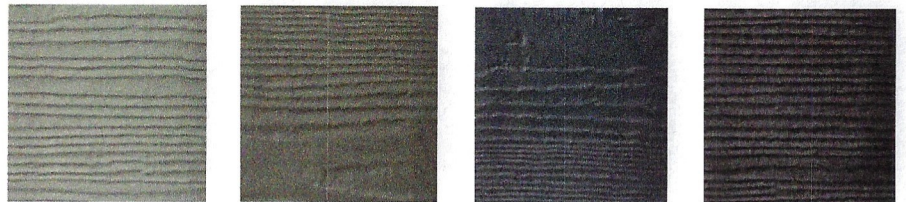


DRIED EUCALYPTUS

CHISELED GREEN

WANDERING GREEN

MUDFLATS



SLATE STEPS

PEPPERY ASH

LAST EMBERS

MIDNIGHT SOOT

All products in this collection come prefinished with ColorPlus® Technology finishes by James Hardie.

## WHITE OR READY-TO-PAINT TRIM AZEK OFFERS STYLE-BASED SOLUTIONS

### Ready-to-Install Classic AZEK® Trim: Crisp, Bright White

The ultimate exterior matchmaker, AZEK Trim comes ready to install in brilliant white with two finish options (smooth and woodgrain) to complement and instantly elevate any surrounding. AZEK Classic Trim can be painted — but because paint is not required for a clean, finished look, installations go faster.



### Ready-to-Paint PaintPro Enhanced Trim: The Best Substrate for Paint

If your project requires painting trim, AZEK PVC Trim with PaintPro technology is the perfect choice. Ready to paint. No sanding. No priming. PaintPro Trim maintains the long-lasting, low-maintenance benefits of PVC trim while adding enhanced paintability. Paint bonds securely for lasting adhesion that resists splits, chips, and flakes.



\*PaintPro must be painted within 180 days of installation.  
Visit [AZEKexteriors.com/products/trim/trim-boards/paintpro-trim](https://www.AZEKexteriors.com/products/trim/trim-boards/paintpro-trim)

## AZEK TRIM OUTPERFORMS WOOD TRIM

AZEK Trim is made from 100% engineered polymer to provide a durable, long-lasting building material that is far more resistant to the elements than wood. No sealants are needed on surfaces or cut ends; every inch of our trim is equally protected against moisture. With superior uniformity, durability, workability, beauty, and much more, AZEK PVC Trim is the better choice for exteriors than wood.

|   | AZEK PVC TRIM | WOOD TRIM |
|---|---------------|-----------|
| <b>UNIFORMITY</b>   |               |           |
| Square edges  | ★             | ★         |
| No knots, no waste; every inch usable   | ★             |           |
| <b>DURABILITY</b>   |               |           |
| Will not rot, split, splinter, delaminate, warp, or swell excessively from moisture | ★             |           |
| Impervious to moisture and insect-resistant   | ★             |           |
| Suitable for ground and masonry contact   | ★             |           |
| Lifetime limited warranty   | ★             |           |
| Handles easily without breakage   | ★             | ★         |
| <b>WORKABILITY</b>  |               |           |
| Use standard woodworking tools  | ★             | ★         |
| Safety milled, shaped, and molded without special safety equipment                  | ★             | ★         |
| Can be heat-formed  | ★             |           |
| Fasten close to edge without predrilling  | ★             |           |
| <b>BEAUTY</b>   |               |           |
| Readily accepts paint*  | ★             | ★         |
| Can be crafted for unique applications  | ★             | †         |
| <b>EXTRAS</b>   |               |           |
| Available in trim boards, sheets, cornerboards, beadboard, and mouldings            | ★             |           |
| Special labor-saving solution profiles available                                    | ★             |           |

★ ALL PRODUCTS MEET CRITERIA  
† SOME PRODUCTS MEET CRITERIA

\*PaintPro must be painted within 180 days of installation.  
Visit [AZEKexteriors.com/products/trim/trim-boards/paintpro-trim](https://www.AZEKexteriors.com/products/trim/trim-boards/paintpro-trim).



GET FREE TRIM SAMPLES WITH  
PAINTPRO® TECHNOLOGY



### CLASSIC AZEK

Available in smooth or woodgrain finish

### PAINTPRO TECHNOLOGY

Reversible (one side smooth, one side woodgrain)



All AZEK Trim is long-lasting, moisture-resistant, and keeps its appearance with very little maintenance. Easily mill and router our trim, or heat form it before painting, for exquisite customized or curved applications. Classic AZEK Trim's brilliant white complements any exterior white AZEK Trim with PaintPro® was made to be painted.

## PROTECTIVE FILM KEEPS CLASSIC WHITE TRIM CLEAN

Classic AZEK Trim with protective film is available for smooth and woodgrain finishes. To ensure it looks as beautiful on your client's home as it does when it leaves our facilities, a protective film preserves AZEK Trim's crisp white semi-matte finish.

| NOMINAL THICKNESS | NOMINAL WIDTH |    |    |    |    |    |    |
|-------------------|---------------|----|----|----|----|----|----|
|                   | 4             | 5  | 6  | 8  | 10 | 12 | 16 |
| 5/4               | SW            | SW | SW | SW | SW | SW | SW |
| 4/4               | SW            | SW | SW | SW | SW | SW | SW |
| 5/8               | SW            | SW | SW | SW | SW | SW | SW |



The film protects AZEK Trim through every production phase:

- Shipping
- Repackaging
- Installation
- Storage
- Handling

AZEK Trim with protective film should be kept dry prior to installation. Do not expose film to direct sunlight for extended periods. Protective film can be removed prior to, during, or immediately after installation.

## AZEK® TRIM

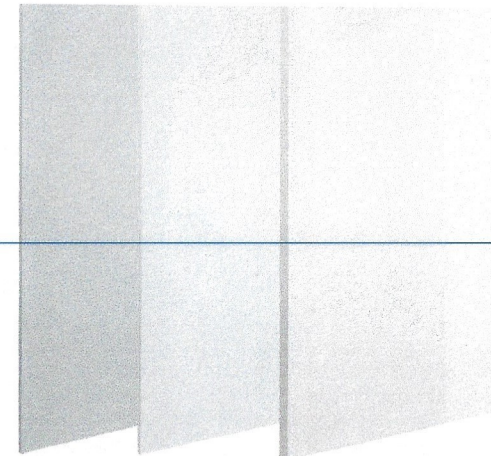
| 8/4 X THICKNESS |                  |     |  |
|-----------------|------------------|-----|--|
| NOMINAL         | ACTUAL           | 18' |  |
| 8/4 x 4         | 1 1/2" x 3 1/2"  | S   |  |
| 8/4 x 6         | 1 1/2" x 5 1/2"  | S   |  |
| 8/4 x 8         | 1 1/2" x 7 1/2"  | S   |  |
| 8/4 x 10        | 1 1/2" x 9 1/2"  | S   |  |
| 8/4 x 12        | 1 1/2" x 11 1/2" | S   |  |

| 6/4 X THICKNESS |                  |     |  |
|-----------------|------------------|-----|--|
| NOMINAL         | ACTUAL           | 20' |  |
| 6/4 x 4         | 1 1/2" x 3 1/2"  | W   |  |
| 6/4 x 6         | 1 1/2" x 5 1/2"  | W   |  |
| 6/4 x 8         | 1 1/2" x 7 1/2"  | W   |  |
| 6/4 x 10        | 1 1/2" x 9 1/2"  | W   |  |
| 6/4 x 12        | 1 1/2" x 11 1/2" | W   |  |

| 5/4 X THICKNESS |              |     |     |     |     |    |
|-----------------|--------------|-----|-----|-----|-----|----|
| NOMINAL         | ACTUAL       | 12' | 16' | 18' | 20' |    |
| 5/4 x 4         | 1" x 3 1/2"  | SW  | P   | SW  | SW  | SW |
| 5/4 x 5         | 1" x 4 1/2"  | SW  |     | SW  | SW  | SW |
| 5/4 x 6         | 1" x 5 1/2"  | SW  | P   | SW  | SW  | SW |
| 5/4 x 8         | 1" x 7 1/2"  | SW  | P   | SW  | SW  | SW |
| 5/4 x 10        | 1" x 9 1/2"  | SW  | P   | SW  | SW  | SW |
| 5/4 x 12        | 1" x 11 1/2" | SW  | P   | SW  | SW  | SW |
| 5/4 x 16        | 1" x 15 1/2" | SW  | P   | SW  | SW  | SW |

| 4/4 X THICKNESS |                |     |     |     |    |
|-----------------|----------------|-----|-----|-----|----|
| NOMINAL         | ACTUAL         | 12' | 16' | 18' |    |
| 1 x 2           | 3/4" x 1 1/2"  |     | P   | SW  | SW |
| 1 x 3           | 3/4" x 2 1/2"  |     | P   |     |    |
| 1 x 4           | 3/4" x 3 1/2"  | SW  | P   | SW  |    |
| 1 x 5           | 3/4" x 4 1/2"  | SW  |     | SW  |    |
| 1 x 6           | 3/4" x 5 1/2"  | SW  | P   | SW  |    |
| 1 x 8           | 3/4" x 7 1/2"  | SW  | P   | SW  |    |
| 1 x 10          | 3/4" x 9 1/2"  | SW  | P   | SW  |    |
| 1 x 12          | 3/4" x 11 1/2" | SW  | P   | SW  |    |
| 1 x 16          | 3/4" x 15 1/2" | SW  | P   | SW  |    |

| 5/8 X THICKNESS |     |     |  |
|-----------------|-----|-----|--|
| ACTUAL          | 12' | 18' |  |
| 5/8" x 3 1/2"   | SW  | SW  |  |
| 5/8" x 5 1/2"   | SW  | SW  |  |
| 5/8" x 7 1/2"   | SW  | SW  |  |
| 5/8" x 9 1/2"   | SW  | SW  |  |
| 5/8" x 11 1/2"  | SW  | SW  |  |
| 5/8" x 15 1/2"  | SW  | SW  |  |



PaintPro Sheet Sheet ATM Sheet

## AZEK SHEET

Applications over 16" wide are easy with AZEK Sheet. Use Sheet for bay windows, dormers, and raised panels.

| SHEET     |     |     |     |     |     |
|-----------|-----|-----|-----|-----|-----|
| ACTUAL    | 8'  | 10' | 12' | 18' | 20' |
| 3/8" x 4' | SW  | SW  | S   | S   |     |
| 1/2" x 4' | SWP | SWP | SP  | S   |     |
| 5/8" x 4' | S   | S   | S   | S   |     |
| 3/4" x 4' | SWP | SWP | S   | S   |     |
| 1" x 4'   | S   | S   | S   | S   | S   |

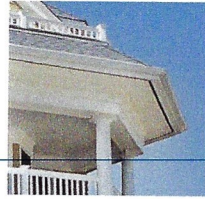
## AZEK-TO-MILL (ATM)

ATM's thick profile makes it an ideal material for fabrication. Its consistent density offers a superior product for milling operations.

| AZEK-TO-MILL       |    |     |     |     |     |
|--------------------|----|-----|-----|-----|-----|
| ACTUAL             | 8' | 10' | 12' | 18' | 20' |
| 1 1/2" x 9 1/2"    |    |     |     | S   |     |
| 1 1/2" x 3 1/2"    |    |     |     | S   |     |
| 1 1/2" x 5 1/2"    |    |     |     | S   |     |
| 1 1/2" x 7 1/2"    |    |     |     | S   |     |
| 1 1/2" x 9 1/2"    |    |     |     | S   |     |
| 1 1/2" x 11 1/2"   |    |     |     | S   |     |
| 1 1/2" x 48" Sheet | S  |     |     |     |     |
| 1 1/2" x 48" Sheet | S  | S   | S   |     | S   |

# AZEK® MOULDING

With over 30 different profiles to mix and match, you can customize any build with a distinctive look.



## BED MOULDING

Similar to crown moulding, a bed mould is used to cover the joint between the ceiling and wall.

## RAMS CROWN

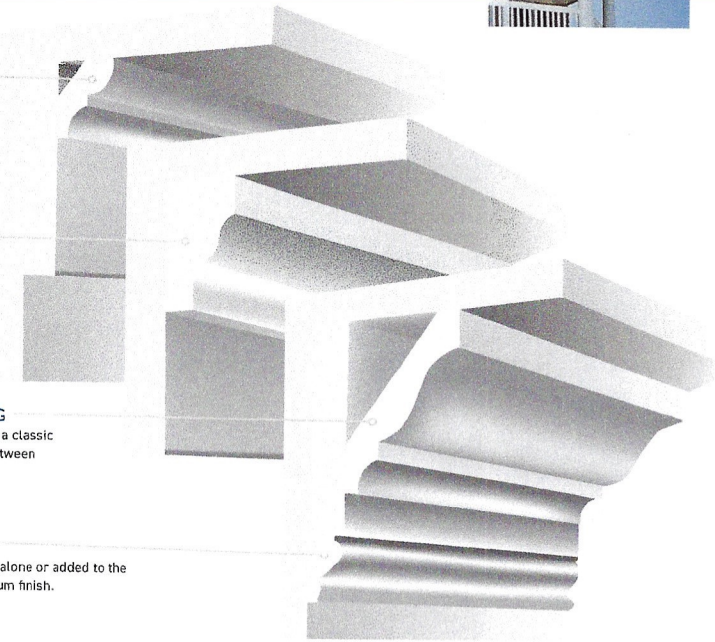
Consider installing Rams Crown at the top of a column or post, or use in place of a crown for a distinctive look.

## CROWN MOULDING

Crown Moulding is used for a classic look, bridging the corner between the wall and ceiling.

## BAND MOULDING

Band Moulding can be used alone or added to the base of a crown for a premium finish.

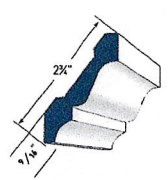
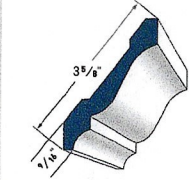
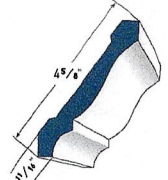
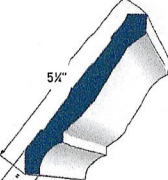
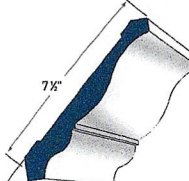
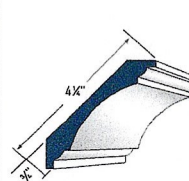
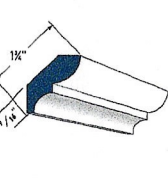
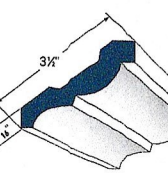
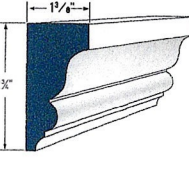
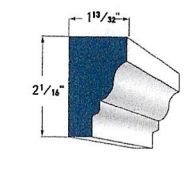
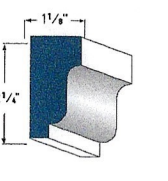
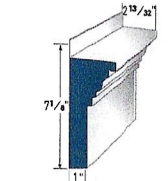


# THE MOST BEAUTIFUL, HIGH-PERFORMANCE MOULDING LINE AVAILABLE

With crisp, architectural details reminiscent of premium wood mouldings, high-performance AZEK® Moulding will last beautifully without the maintenance hassles associated with wood. Backed by AZEK's promise of high quality and lasting performance, AZEK Moulding will retain a like-new appearance despite the tests of time and weather. AZEK Moulding offers greater stability and predictability when fastening. Unlike traditional wood moulding, AZEK Moulding resists moisture and insect damage and will not rot or split.

# CROWN PROFILES

Crown moulding profiles are typically decorative mouldings designed for use along the intersection of a wall or ceiling. They may be combined with other mouldings to create a built-up profile.

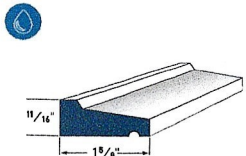
|   |  |   |  |
|---|--|---|--|
|  <p>3" CROWN AZM-52<br/>LENGTH: 16'</p>                    |  <p>4" CROWN AZM-49<br/>LENGTH: 16'</p>           |  <p>5" CROWN AZM-47<br/>LENGTH: 16'</p>            |  <p>6" CROWN AZM-45<br/>LENGTH: 16'</p>                   |
|  <p>8" CROWN AZM-43<br/>LENGTH: 16'</p>                    |  <p>COVE MOULDING AZM-80<br/>LENGTH: 16'</p>      |  <p>BED MOULDING AZM-75<br/>LENGTH: 16'</p>        |  <p>3 1/2" BED MOULDING AZM-28<br/>LENGTH: 16'</p>        |
|  <p>IMPERIAL RAKE CROWN<br/>AZM-6937<br/>LENGTH: 16'</p> |  <p>RAMS CROWN<br/>AZM-6934<br/>LENGTH: 16'</p> |  <p>SOLID CROWN<br/>AZM-7954<br/>LENGTH: 16'</p> |  <p>CROSSHEAD PEDIMENT<br/>AZM-6216<br/>LENGTH: 18'</p> |

## DETAIL & SILL/DRIP PROFILES

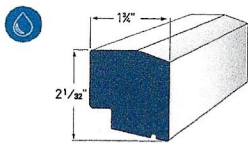
AZEK® Drip profiles can be used as a water table or brick ledge for separation and watershed against two different materials. AZEK Sill profiles shed water and offer architectural detail.



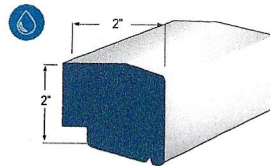
Denotes Water Management Drip Edge



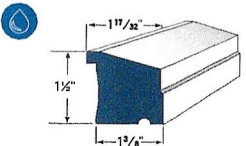
**DRIP CAP AZM-197**  
LENGTH: 16'



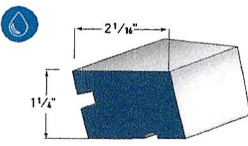
**HISTORIC SILL AZM-6930**  
LENGTH: 16'



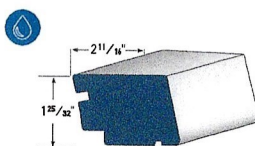
**LARGE SILL NOSE AZM-7979**  
LENGTH: 16'



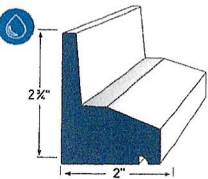
**SUB SILL NOSE AZM-6933**  
LENGTH: 16'



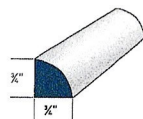
**WINDOW SILL NOSE AZM-7974**  
LENGTH: 12'



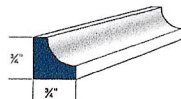
**LARGE HISTORIC SILL AZM-7958**  
LENGTH: 16'



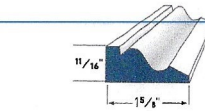
**WATER TABLE AZM-6935**  
LENGTH: 18'



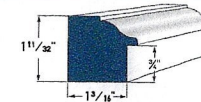
**QUARTER ROUND AZM-105**  
LENGTH: 16'



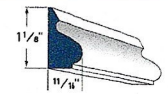
**SCOTIA AZM-93**  
LENGTH: 16'



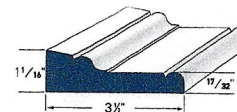
**BAND MOULDING AZM-217**  
LENGTH: 16'



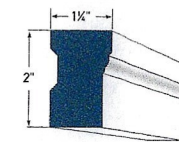
**BACK BAND AZM-6931**  
LENGTH: 16'



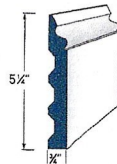
**BASE CAP AZM-164**  
LENGTH: 16'



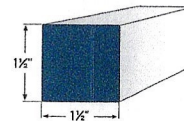
**ADAMS CASING AZM-97**  
LENGTH: 16'



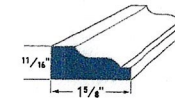
**BRICK MOULD AZM-180**  
LENGTHS: 16', 17' and 18'



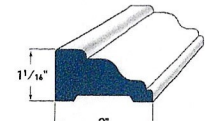
**COLONIAL BASE CAP AZM-163**  
LENGTH: 16'



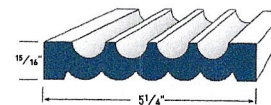
**SQUARE PROFILE AZM-236**  
LENGTH: 12'



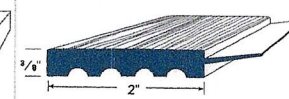
**SHINGLE MOULD AZM-210**  
LENGTH: 16'



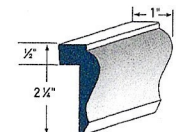
**RAKE MOULDING AZM-287**  
LENGTH: 16'



**FLUTED/REEDED AZM-606**  
LENGTH: 16'



**GARAGE DOOR THERMOSTOP AZM-6936**  
LENGTHS: 7', 9', and 16'



**WAINSCOT CAP AZM-284**  
LENGTH: 16'

\*18' Brick Mould (AZM-180) is available in full units only and cannot be ordered via the Pick & Pack program.



V. HVAC & Venting

-Install two new HVAC systems w/ condenser on north side of property along brick foundation,

-Bosch Thermotechnology, Bosch 2.0 IDS, 3.00 Ton, Heat Pump (2)

-See attached Bosch Specification Sheet for more details

# IDS Family

## Quick Start Guide



**Before Everything,  
There's Bosch.**

Simple. Reliable. Innovative.



BOVA15

BVA15

BOVB18

BVA20

BOVA20

BVA20

BOVB20

BVA20

**IDS Light**

15 SEER System

**IDS Plus**

18 SEER System

**IDS Premium**

20 SEER System

**IDS Premium Connected**

20 SEER System

## Bosch IDS Family of Inverter Heat Pumps

The robust Bosch Inverter Ducted Split Air Source Heat Pump system utilizes just the right amount of energy to achieve ultimate comfort at maximum efficiency while keeping sound levels to a minimum.

Designed for easy installation & start-up | Support & spare parts readily available | Easy to maintain & service

Invented for life



**BOSCH**