

# HDC

## ADMINISTRATIVE APPROVALS

May 08, 2024

- |    |                          |                       |
|----|--------------------------|-----------------------|
| 1. | 111 Market Street        | -Recommended Approval |
| 2. | 236 Union Street         | -Recommended Approval |
| 3. | 30 Gardner Street        | -Recommended Approval |
| 4. | 66 South Street, Unit #2 | -Recommended Approva  |
| 5. | 425 Islington Street     | -TBD                  |

1. 111 Market Street

**-Recommended Approval**

**Background:** The applicant is seeking approval for the replacement of (4) windows due to water damage.

**Staff Comment:** Recommend Approval

**Stipulations:**

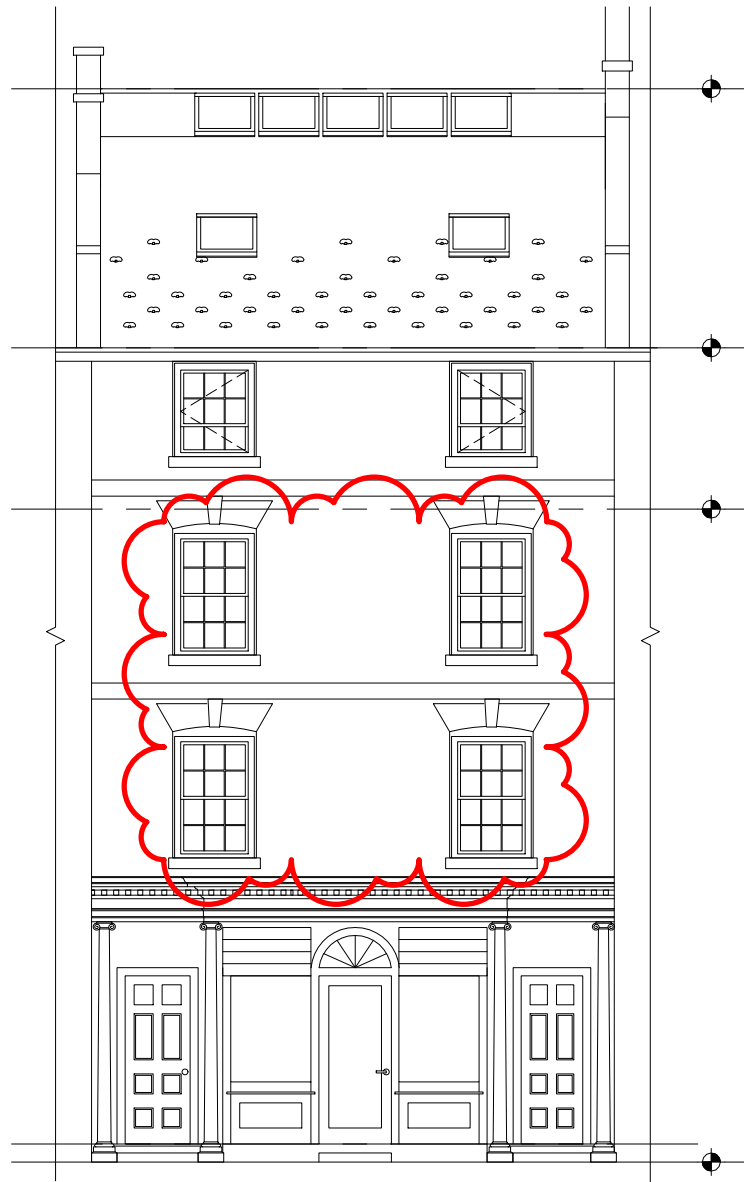
1. \_\_\_\_\_
2. \_\_\_\_\_
3. \_\_\_\_\_

# 111 MARKET STREET WINDOW REPLACEMENT

Historic District Commission Administrative Approval - May, 2024 Portsmouth, New Hampshire

**PROPOSED WORK:**

- REPLACEMENT OF (4) WINDOWS ON THE SECOND AND THIRD FLOOR, FACING MARKET STREET.
- EXISTING ARCHED TRIM AT WINDOW HEAD AND CASING TO BE SALVAGED AND REUSED.
- HALF SCREENS TO BE INSTALLED WITH THE (4) REPLACEMENT WINDOWS.



111 MARKET STREET ELEVATION

1/8" = 1'-0"

Double-Hung Interior



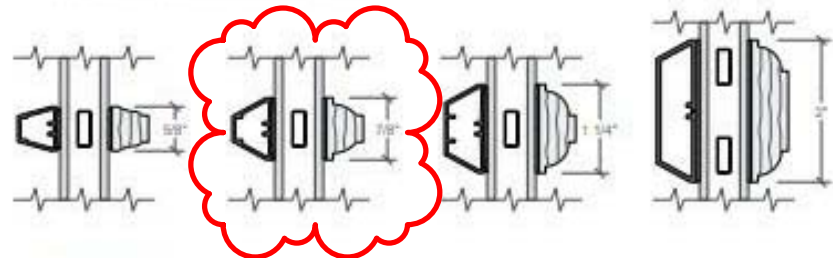
Double-Hung Exterior



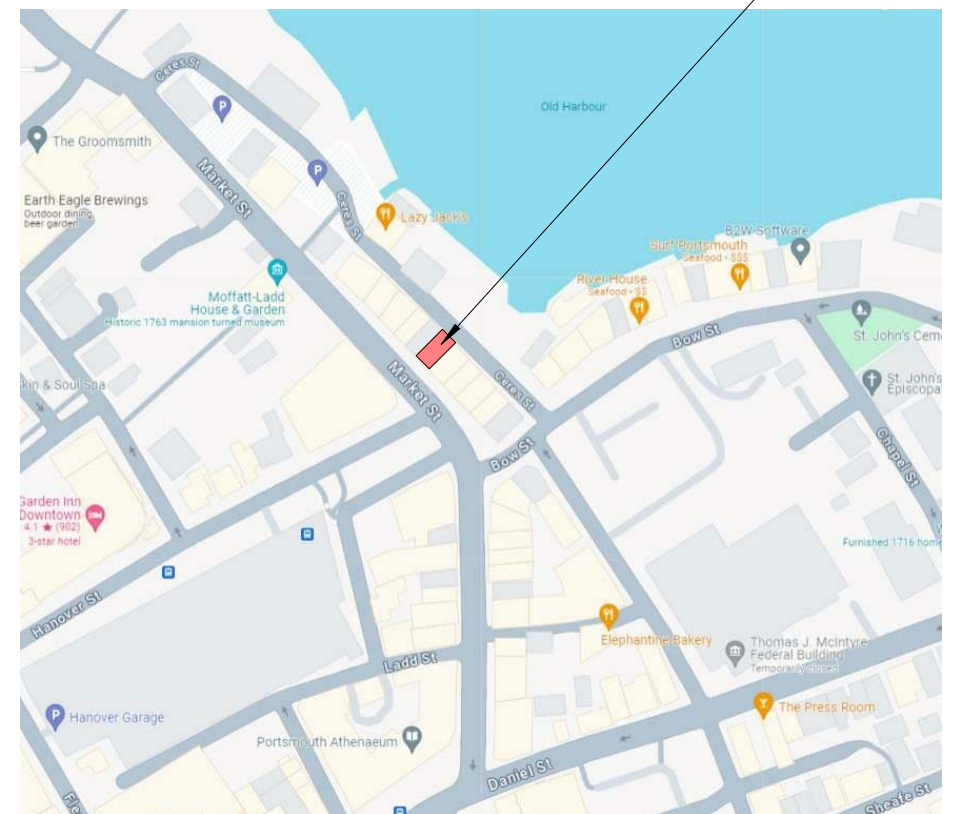
PELLA® RESERVE, , TRADITIONAL REPLACEMENT DOUBLE HUNG, 34.25 X 55.5, WHITE

Traditional Style Collection - Integral Light Technology

Putty Glaze and Ogee Grilles  
Clad Exterior - Wood Interior



111 MARKET STREET, PORTSMOUTH, NH 03801



© 2024 McHenry Architecture

**WINDOW REPLACEMENT**

111 MARKET STREET,  
PORTSMOUTH, NH 03801

**PROPOSED WORK**

HISTORIC DISTRICT COMMISSION - ADMINISTRATIVE  
APPROVAL

**McHENRY ARCHITECTURE**

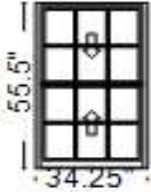
4 Market Street  
Portsmouth, New Hampshire

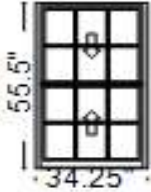
**A1**

05/01/2024

McHA: EKW/MG

NOT TO SCALE

Line #	Location:	Attributes		
15	3rd floor	<p><b>Pella® Reserve, , Traditional Replacement Double Hung, 34.25 X 55.5, White</b></p> <p><b>Item Price</b>    <b>Qty</b>    <b>Ext'd Price</b></p>		
	 <p>PK # 2165</p> <p>Viewed From Exterior Rough Opening: 34 - 3/4" X 56"</p>	<p><b>1: Non-Standard SizeNon-Standard Size Double Hung, Equal</b>  <b>Frame Size:</b> 34 1/4 X 55 1/2  <b>General Information:</b> Standard, Luxury, Clad, Pine, 4 3/4", 3 1/4"  <b>Exterior Color / Finish:</b> Painted, Standard Enduraclad, White  <b>Interior Color / Finish:</b> Prefinished White Paint Interior  <b>Sash / Panel:</b> Putty Glaze, Ogee, Standard, No Sash Lugs  <b>Glass:</b> Insulated Dual Low-E Advanced Low-E Insulating Glass Argon Non High Altitude  <b>Hardware Options:</b> Cam-Action Lock, Satin Nickel, No Window Opening Control Device, No Limited Opening Hardware, Order Sash Lift, No Integrated Sensor  <b>Screen:</b> Pa-Screen, Standard EnduraClad, White, Standard, InView™  <b>Performance Information:</b> U-Factor 0.30, SHGC 0.26, VLT 0.48, CPD PEL-N-233-00639-00001, Performance Class CW, PG 50, Calculated Positive DP Rating 50, Calculated Negative DP Rating 50, Year Rated 08 11, Clear Opening Width 30.875, Clear Opening Height 23.687, Clear Opening Area 5.078723, Egress Does not meet typical United States egress, but may comply with local code requirements  <b>Grille:</b> ILT, No Custom Grille, 7/8", Traditional (3W2H / 3W2H), Putty Glaze, Ogee  <b>Wrapping Information:</b> No Exterior Trim, Pella Recommended Clearance, Perimeter Length = 180".</p>		
		<p><b>Insulate Weight Pocket - Insulate Weight Pocket</b></p> <p><b>Lead Safe Install - Lead Safe Install</b></p> <p><b>Pocket Install - Pocket Install</b></p> <p><b>3rd Story and Above Ext - 3rd Story and Above Ext</b></p>	<p>Qty 1</p> <p>Qty 1</p> <p>Qty 1</p> <p>Qty 1</p>	

Line #	Location:	Attributes		
20	3rd floor	<p><b>Pella® Reserve, , Traditional Replacement Double Hung, 34.25 X 55.5, White</b></p> <p><b>Item Price</b>    <b>Qty</b>    <b>Ext'd Price</b></p>		
	 <p>PK # 2165</p> <p>Viewed From Exterior Rough Opening: 34 - 3/4" X 56"</p>	<p><b>1: Non-Standard SizeNon-Standard Size Double Hung, Equal</b>  <b>Frame Size:</b> 34 1/4 X 55 1/2  <b>General Information:</b> Standard, Luxury, Clad, Pine, 4 3/4", 3 1/4"  <b>Exterior Color / Finish:</b> Painted, Standard Enduraclad, White  <b>Interior Color / Finish:</b> Prefinished White Paint Interior  <b>Sash / Panel:</b> Putty Glaze, Ogee, Standard, No Sash Lugs  <b>Glass:</b> Insulated Dual Low-E Advanced Low-E Insulating Glass Argon Non High Altitude  <b>Hardware Options:</b> Cam-Action Lock, Satin Nickel, No Window Opening Control Device, No Limited Opening Hardware, Order Sash Lift, No Integrated Sensor  <b>Screen:</b> Pa-Screen, Standard EnduraClad, White, Standard, InView™  <b>Performance Information:</b> U-Factor 0.30, SHGC 0.26, VLT 0.48, CPD PEL-N-233-00639-00001, Performance Class CW, PG 50, Calculated Positive DP Rating 50, Calculated Negative DP Rating 50, Year Rated 08 11, Clear Opening Width 30.875, Clear Opening Height 23.687, Clear Opening Area 5.078723, Egress Does not meet typical United States egress, but may comply with local code requirements  <b>Grille:</b> ILT, No Custom Grille, 7/8", Traditional (3W2H / 3W2H), Putty Glaze, Ogee  <b>Wrapping Information:</b> No Exterior Trim, Pella Recommended Clearance, Perimeter Length = 180".</p>		

For more information regarding the finishing, maintenance, service and warranty of all Pella® products, visit the Pella® website at [www.pella.com](http://www.pella.com)

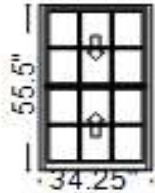
<b>Insulate Weight Pocket - Insulate Weight Pocket</b>	Qty 1
<b>Lead Safe Install - Lead Safe Install</b>	Qty 1
<b>Pocket Install - Pocket Install</b>	Qty 1
<b>3rd Story and Above Ext - 3rd Story and Above Ext</b>	Qty 1

Line #	Location:	Attributes	Item Price	Qty	Ext'd Price
--------	-----------	------------	------------	-----	-------------

25 2nd floor

**Pella® Reserve, , Traditional Replacement Double Hung, 34.25 X 55.5, White**

Item Price    Qty    Ext'd Price



PK #  
2165

Viewed From Exterior

**Rough Opening:** 34 - 3/4" X 56"

**1: Non-Standard Size Non-Standard Size Double Hung, Equal**

**Frame Size:** 34 1/4 X 55 1/2

**General Information:** Standard, Luxury, Clad, Pine, 4 3/4", 3 1/4"

**Exterior Color / Finish:** Painted, Standard Enduraclad, White

**Interior Color / Finish:** Prefinished White Paint Interior

**Sash / Panel:** Putty Glaze, Ogee, Standard, No Sash Lugs

**Glass:** Insulated Dual Low-E Advanced Low-E Insulating Glass Argon Non High Altitude

**Hardware Options:** Cam-Action Lock, Satin Nickel, No Window Opening Control Device, No Limited Opening Hardware, Order Sash Lift, No Integrated Sensor

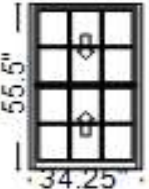
**Screen:** ~~Pa~~-Screen, Standard EnduraClad, White, Standard, InView™

**Performance Information:** U-Factor 0.30, SHGC 0.26, VLT 0.48, CPD PEL-N-233-00639-00001, Performance Class CW, PG 50, Calculated Positive DP Rating 50, Calculated Negative DP Rating 50, Year Rated 08|11, Clear Opening Width 30.875, Clear Opening Height 23.687, Clear Opening Area 5.078723, Egress Does not meet typical United States egress, but may comply with local code requirements

**Grille:** ILT, No Custom Grille, 7/8", Traditional (3W2H / 3W2H), Putty Glaze, Ogee

**Wrapping Information:** No Exterior Trim, Pella Recommended Clearance, Perimeter Length = 180".

<b>Insulate Weight Pocket - Insulate Weight Pocket</b>	Qty 1
<b>Lead Safe Install - Lead Safe Install</b>	Qty 1
<b>Pocket Install - Pocket Install</b>	Qty 1

Line #	Location:	Attributes		Item Price	Qty	Ext'd Price
30	2nd floor	<b>Pella® Reserve, , Traditional Replacement Double Hung, 34.25 X 55.5, White</b>				
		 <p>Viewed From Exterior Rough Opening: 34 - 3/4" X 56"</p>	<p>PK # 2165</p> <p><b>1: Non-Standard Size Non-Standard Size Double Hung, Equal</b>  <b>Frame Size:</b> 34 1/4 X 55 1/2  <b>General Information:</b> Standard, Luxury, Clad, Pine, 4 3/4", 3 1/4"  <b>Exterior Color / Finish:</b> Painted, Standard Enduraclad, White  <b>Interior Color / Finish:</b> Prefinished White Paint Interior  <b>Sash / Panel:</b> Putty Glaze, Ogee, Standard, No Sash Lugs  <b>Glass:</b> Insulated Dual Low-E Advanced Low-E Insulating Glass Argon Non High Altitude  <b>Hardware Options:</b> Cam-Action Lock, Satin Nickel, No Window Opening Control Device, No Limited Opening Hardware, Order Sash Lift, No Integrated Sensor  <b>Screen:</b> <del>Pa</del>-Screen, Standard EnduraClad, White, Standard, InView™  <b>Performance Information:</b> U-Factor 0.30, SHGC 0.26, VLT 0.48, CPD PEL-N-233-00639-00001, Performance Class CW, PG 50, Calculated Positive DP Rating 50, Calculated Negative DP Rating 50, Year Rated 08 11, Clear Opening Width 30.875, Clear Opening Height 23.687, Clear Opening Area 5.078723, Egress Does not meet typical United States egress, but may comply with local code requirements  <b>Grille:</b> ILT, No Custom Grille, 7/8", Traditional (3W2H / 3W2H), Putty Glaze, Ogee  <b>Wrapping Information:</b> No Exterior Trim, Pella Recommended Clearance, Perimeter Length = 180".</p>			
			<p><b>Insulate Weight Pocket - Insulate Weight Pocket</b> Qty 1</p> <p><b>Lead Safe Install - Lead Safe Install</b> Qty 1</p> <p><b>Pocket Install - Pocket Install</b> Qty 1</p>			

Line #	Location:	Attributes		Item Price	Qty	Ext'd Price
35	None Assigned	<b>Min Order Quantity - Min Order Under 3 FF or 5 PF</b>				

**Thank You For Your Interest In Pella® Products**

2. 236 Union Street

**-Recommended Approval**

**Background:** The applicant is seeking approval for a change to a previously approved design (request a 5ft. reduction of the new gable roof).

**Staff Comment:** Recommend Approval

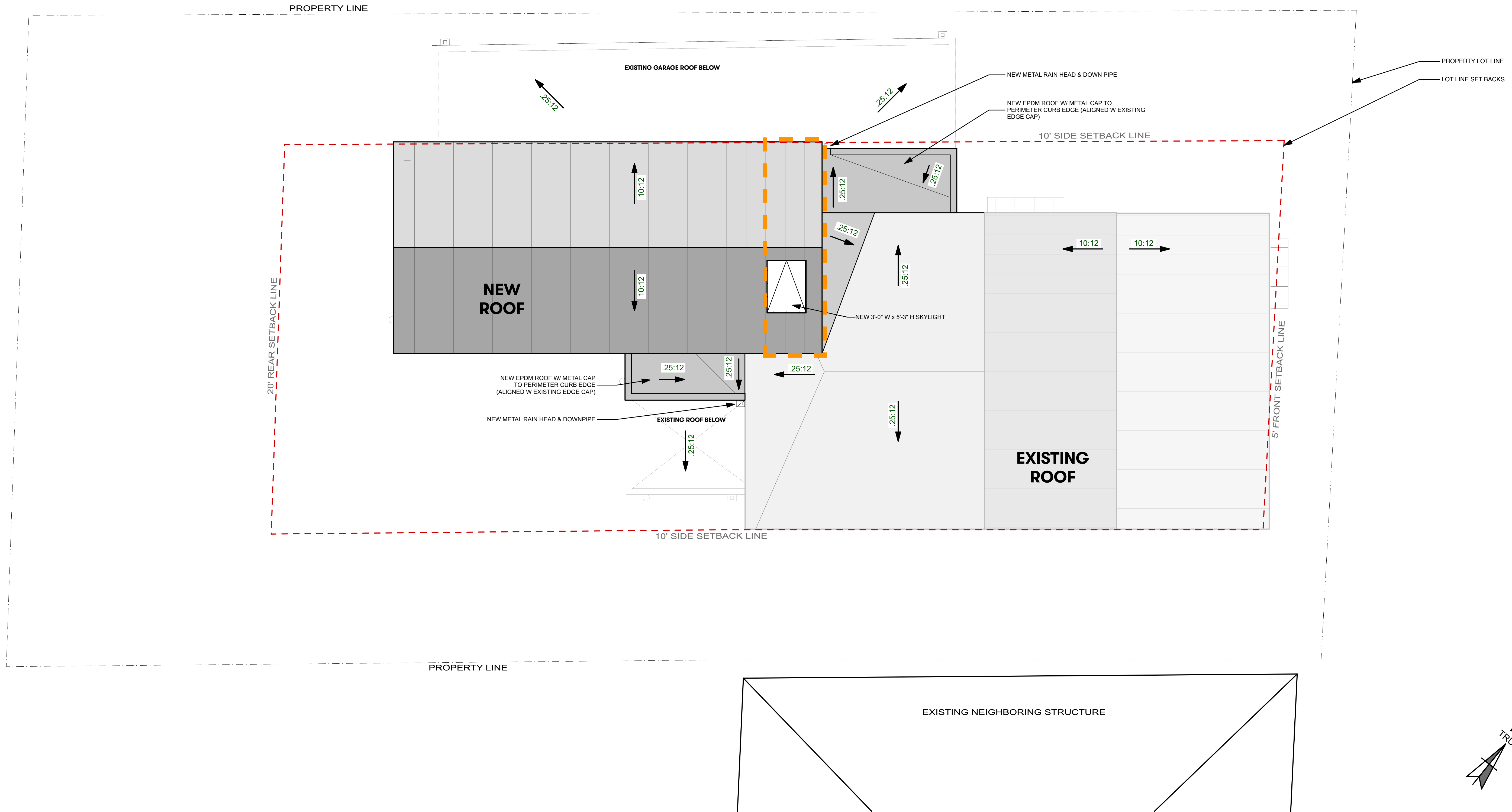
**Stipulations:**

1. \_\_\_\_\_
2. \_\_\_\_\_
3. \_\_\_\_\_

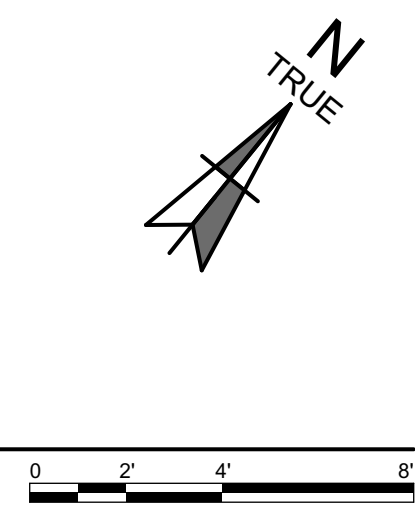
PROJECT  
**ALLISON  
STUDIO  
ADDITION**

236 Union Street,  
Portsmouth, NH 03801

**AS APPROVED BY HDC  
SEPTEMBER 2023**



1 ROOF  
SCALE: 1/4" = 1'-0"



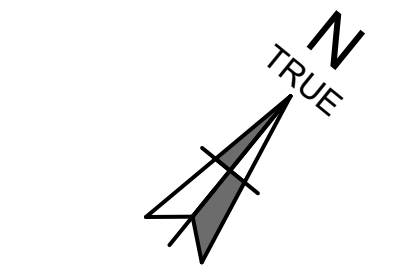
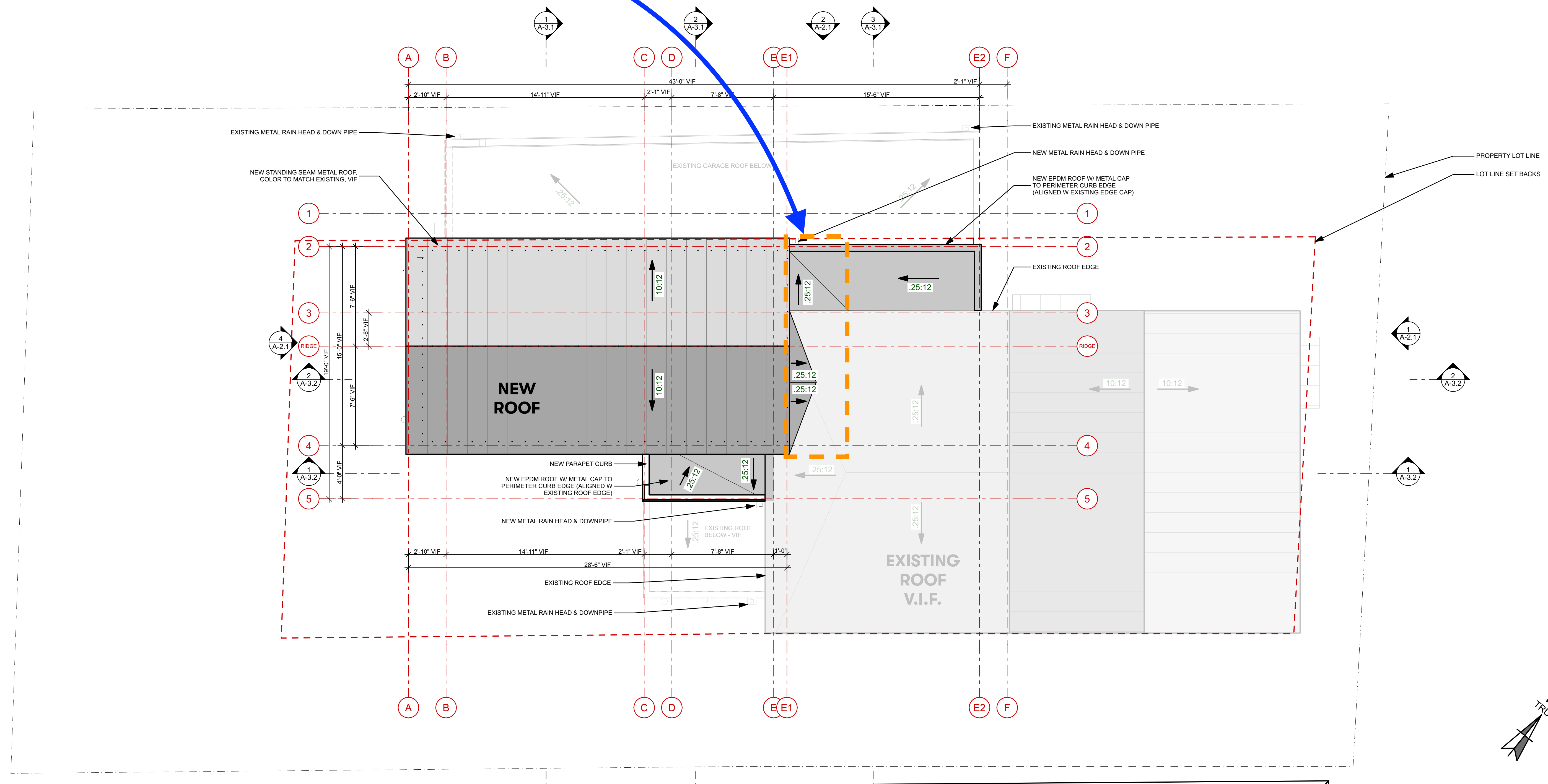
NOT FOR CONSTRUCTION

PROJECT	ALL2
DATE	08/18/2023
	REVISED 1
DRAWN BY	RL/SS
PHASE	For HDC Application

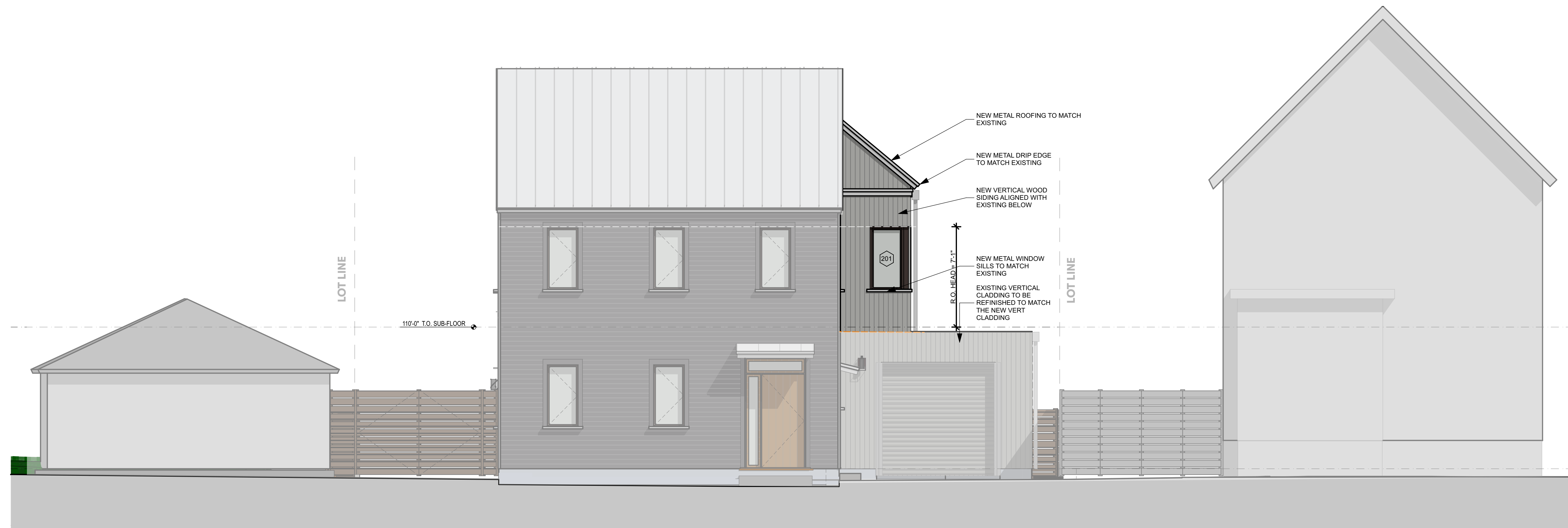


**AS REVISED APRIL 2024**

**EXTENT OF NEW GABLE ROOF TO BE  
REDUCED BY ± 5'**

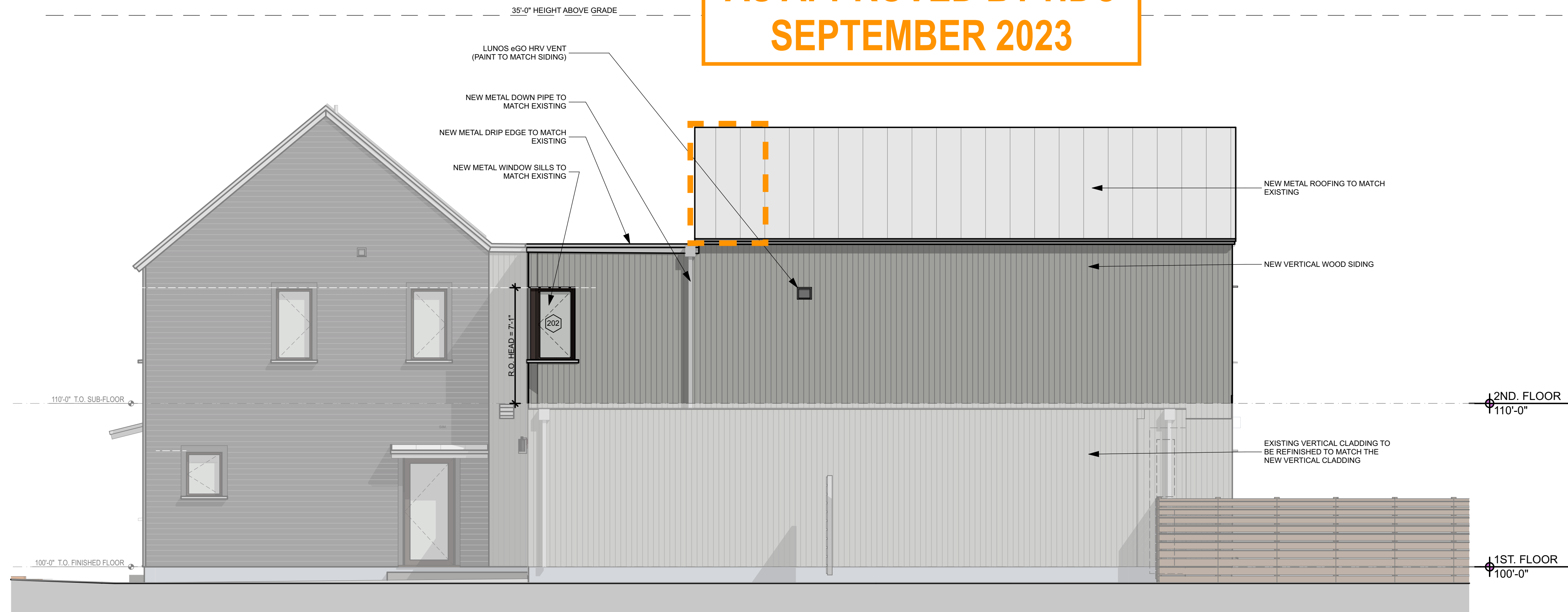


PROJECT:	ALL2
DATE:	APRIL 23, 2024
REVISED:	
DRAWN BY:	RL/SS
PHASE:	FOR HDC ADMIN. APPROVAL



**2** PROPOSED UNION STREET ELEVATION - NORTHEAST  
SCALE: 1/4" = 1'-0"

**AS APPROVED BY HDC  
SEPTEMBER 2023**

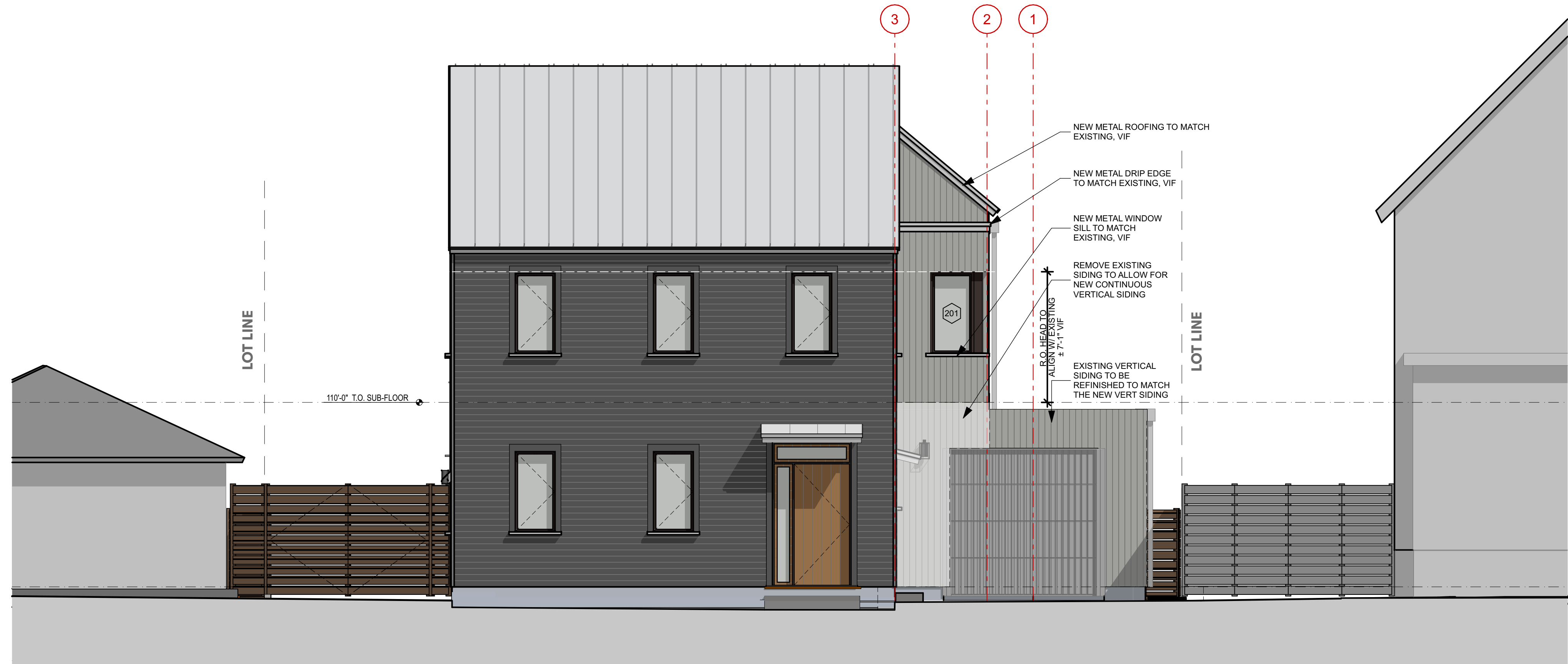


**1** PROPOSED SIDE ELEVATION - NORTHWEST  
SCALE: 1/4" = 1'-0"

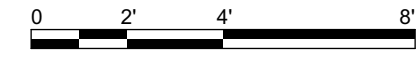
NOT FOR CONSTRUCTION

PROJECT	ALL2
DATE	08/18/2023
	REVISED 1

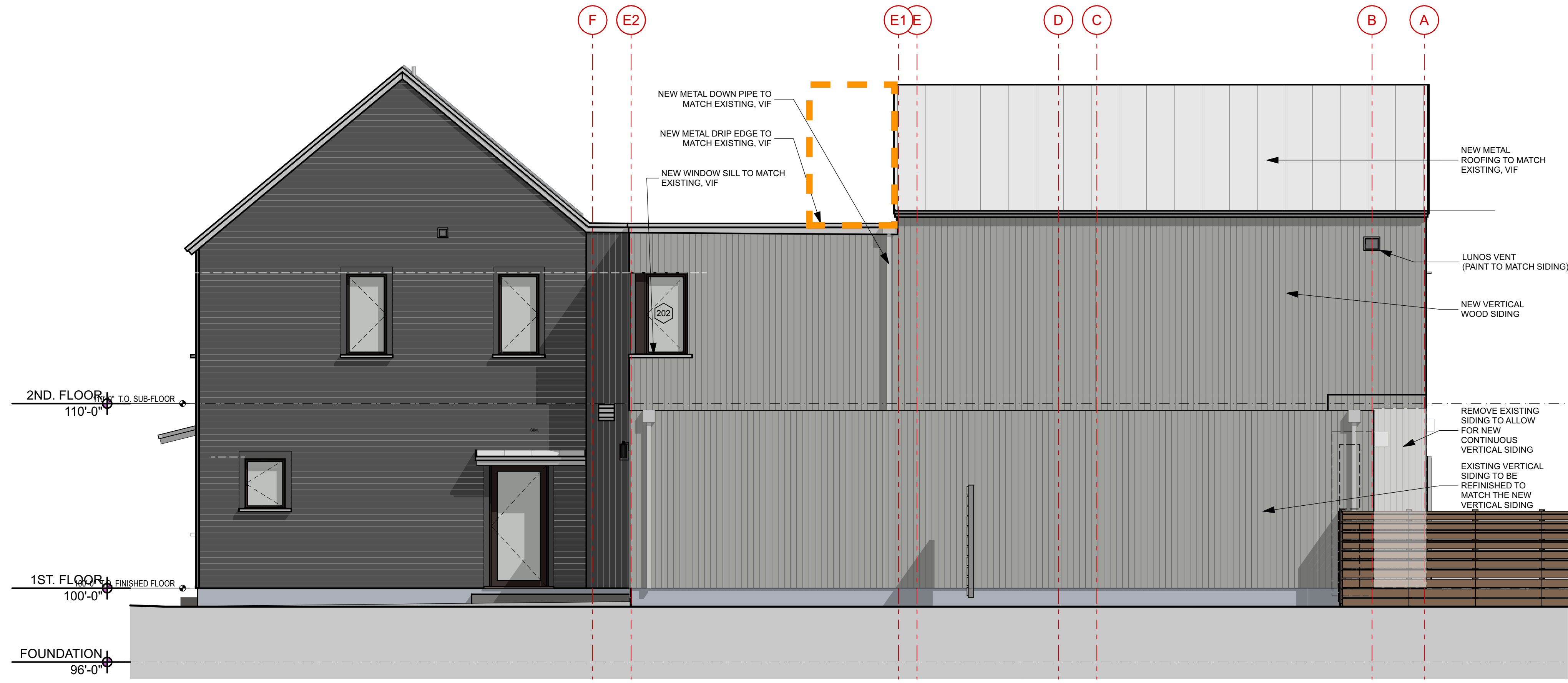
DRAWN BY	RL/SS
PHASE	For HDC Application



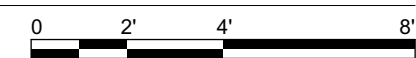
**2** UNION STREET ELEVATION - NORTHEAST  
SCALE: 1/4" = 1'-0"



**AS REVISED APRIL 2024**



**1** SIDE ELEVATION - NORTHWEST  
SCALE: 1/4" = 1'-0"



PROJECT:	ALL2
DATE:	APRIL 23, 2024
REVISED:	

DRAWN BY:	RL/SS
PHASE:	FOR HDC ADMIN. APPROVAL



EXISTING VIEW FROM ACROSS THE STREET



EXISTING VIEW FROM ACROSS THE STREET

AS APPROVED BY HDC  
SEPTEMBER 2023



PROPOSED VIEW FROM ACROSS THE STREET WITH STUDIO ADDITION



PROPOSED VIEW FROM ACROSS THE STREET WITH STUDIO ADDITION

NOT FOR CONSTRUCTION

PROJECT ALL2  
DATE 08/18/2023  
REVISED 1

DRAWN BY RL/SS  
PHASE For HDC Application

EXISTING &  
PROPOSED VIEWS  
FROM STREET LEVEL

**A-9.1**



EXISTING VIEW FROM ACROSS THE STREET



EXISTING VIEW FROM ACROSS THE STREET

AS REVISED APRIL 2024



PROPOSED VIEW FROM ACROSS THE STREET WITH STUDIO ADDITION



PROPOSED VIEW FROM ACROSS THE STREET WITH STUDIO ADDITION

Kaplan  
Thompson  
Architects

102 Exchange Street  
Portland, ME 04101  
(207) 842-2888  
kaplanthompson.com

PROJECT  
**STUDIO  
ADDITION**

FOR  
Melanie Alison

AT  
236 Union Street,  
Portsmouth, NH 03801

GENERAL CONTRACTOR  
**Bruner & Son Construction**  
9 Thompson Lane, Durham,  
NH, 03824  
T: (603) 397-2943

PROJECT: ALL2  
DATE: APRIL 23, 2024  
REVISED:

DRAWN BY: RL/SS  
PHASE: FOR HDC  
ADMIN. APPROVAL

EXISTING &  
PROPOSED VIEWS  
FROM STREET LEVEL

**A-9.1**

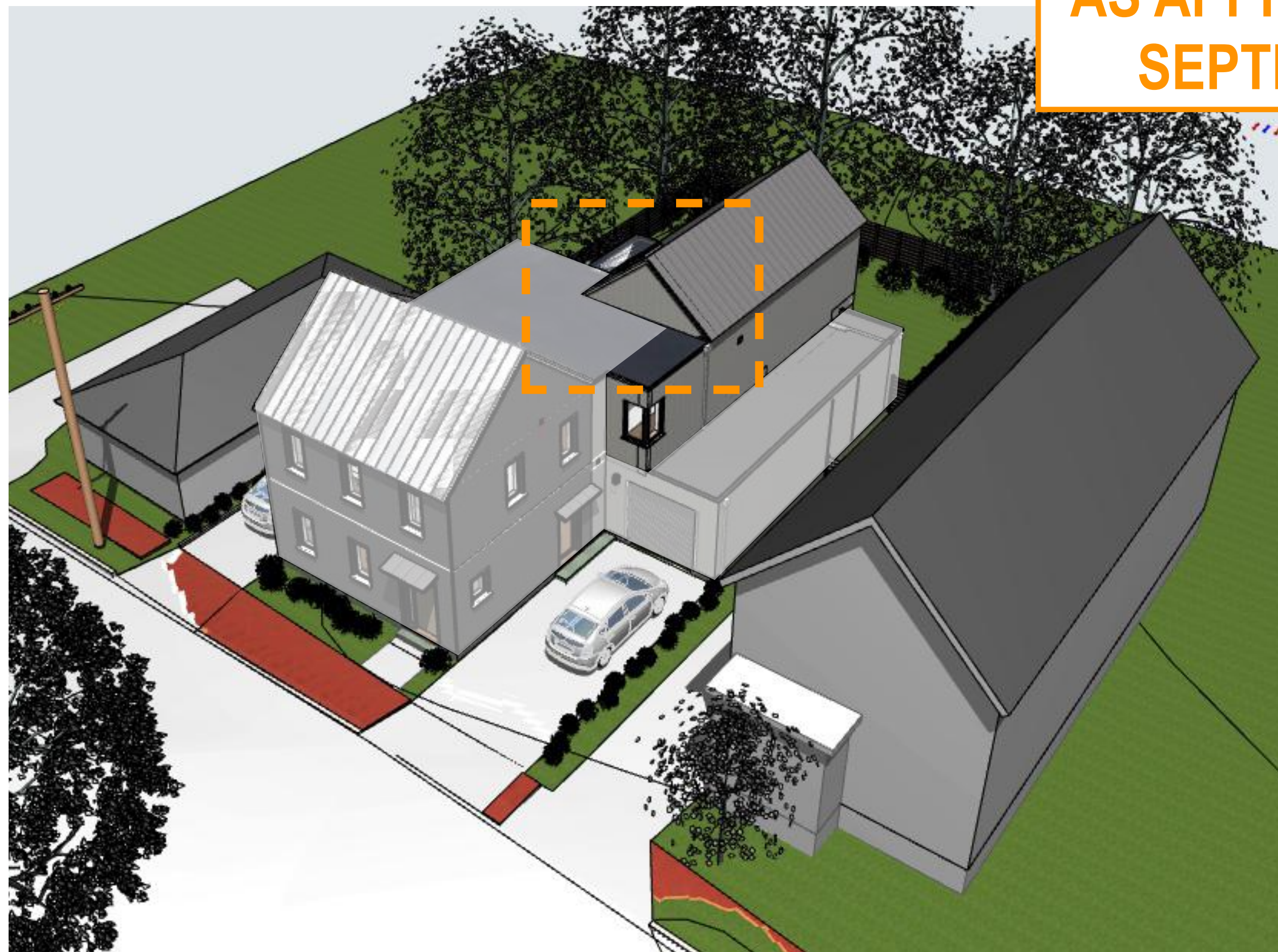


EXISTING CONDITIONS - AERIAL VIEW FROM NORTH

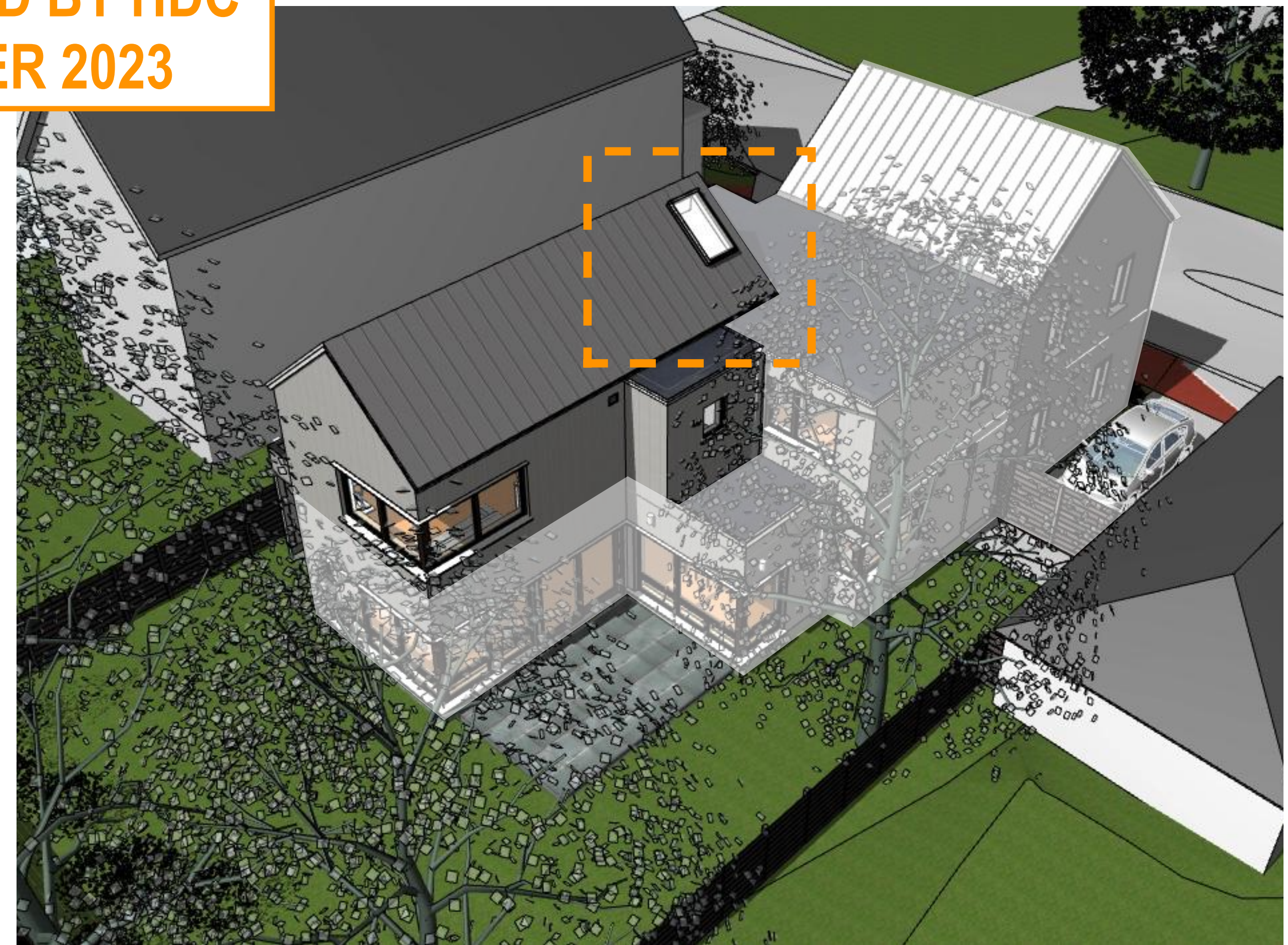


EXISTING CONDITIONS - AERIAL VIEW FROM SOUTH

**AS APPROVED BY HDC  
SEPTEMBER 2023**



PROPOSED STUDIO ADDITION - AERIAL VIEW FROM NORTH



PROPOSED STUDIO ADDITION - AERIAL VIEW FROM SOUTH

NOT FOR CONSTRUCTION

PROJECT ALL2  
DATE 08/18/2023  
REVISED 1

DRAWN BY RL/SS  
PHASE For HDC Application



EXISTING CONDITIONS - AERIAL VIEW FROM NORTH

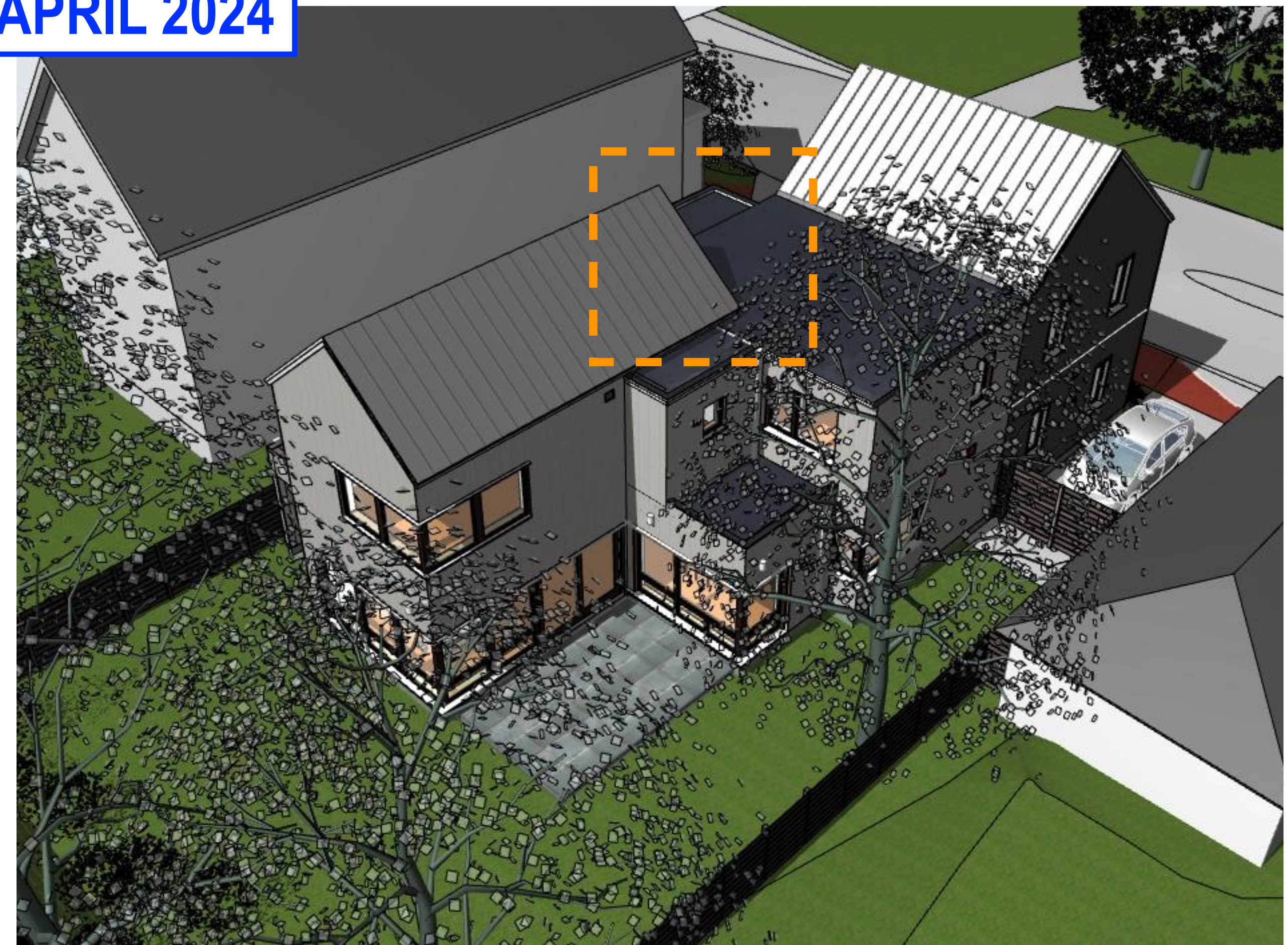


EXISTING CONDITIONS - AERIAL VIEW FROM SOUTH

AS REVISED APRIL 2024



PROPOSED STUDIO ADDITION - AERIAL VIEW FROM NORTH



PROPOSED STUDIO ADDITION - AERIAL VIEW FROM SOUTH

PROJECT  
**STUDIO  
ADDITION**

FOR  
Melanie Alison

AT  
236 Union Street,  
Portsmouth, NH 03801

GENERAL CONTRACTOR  
**Bruner & Son Construction**  
9 Thompson Lane, Durham,  
NH, 03824  
T: (603) 397-2943

PROJECT: ALL2  
DATE: APRIL 23, 2024  
REVISED:

DRAWN BY: RL/SS  
PHASE: FOR HDC  
ADMIN. APPROVAL

3. 30 Gardner Street

**-Recommended Approval**

**Background:** The applicant is seeking approval for mechanical venting and to rebuild the rear low sloped portion of the roof due to finding original undersized rafters.

**Staff Comment:** Recommend Approval

**Stipulations:**

1. \_\_\_\_\_
2. \_\_\_\_\_
3. \_\_\_\_\_



1/4" = 1'-0"



**Administrative Approval Request:**

Replace Existing 2x6 Rafters with 2x12  
11'11" span- 16" O.C.  
Hurricane screws through top plate  
Vented soffit  
Install rigid foam vents, 4" closed cell foam and 5" open cell foam (total R50+)

Rafter tails to be notched so that Existing trim dimensions can be replicated

**AD-3.0202: New Exterior Elevation East**

1/4" = 1'-0"



ation West

1/4" = 1'-0"



**AD-3.0202: New Exterior Elevation East**

1/4" = 1'-0"

4. 66 South Street, Unit #2

**-Recommended Approval**

**Background:** The applicant is seeking approval for the final window brand and window schedule.

**Staff Comment:** Recommend Approval

**Stipulations:**

1. \_\_\_\_\_
2. \_\_\_\_\_
3. \_\_\_\_\_

# Marvin Elevate Windows - 66 South St.

OMS Ver. 0004.08.01 (Current)  
Product availability and pricing subject to change.

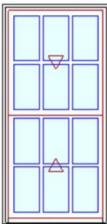
AMAROSA  
PORTSMOUTH, NH  
Quote Number: T151NNE

## LINE ITEM QUOTES

The following is a schedule of the windows and doors for this project. For additional unit details, please see Line Item Quotes. Additional charges, tax or Terms and Conditions may apply. Detail pricing is per unit.

Line #2	Mark Unit:	Net Price:	1,120.54
Qty: 5		Ext. Net Price:	5,602.70

MARVIN



As Viewed From The Exterior

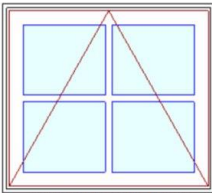
Entered As: RO  
RO 29" X 57"

Mixed Exterior Colors  
Stone White Exterior  
**Color Mismatch: Frame and Sash Exterior Colors do not match.**  
Painted Interior Finish - Designer Black Pine Interior  
Elevate Double Hung  
Rough Opening 29" X 57"  
Top Sash  
Ebony Exterior  
Painted Interior Finish - Designer Black Pine Interior  
IG  
Low E2 w/Argon  
Stainless Perimeter and Spacer Bar  
7/8" SDL - With Spacer Bar - Stainless  
Rectangular - Special Cut 3W2H  
Ebony Ext - Painted Interior Finish - Designer Black Int  
Bottom Sash  
Ebony Exterior  
Painted Interior Finish - Designer Black Pine Interior  
IG  
Low E2 w/Argon  
Stainless Perimeter and Spacer Bar  
7/8" SDL - With Spacer Bar - Stainless  
Rectangular - Special Cut 3W2H  
Ebony Ext - Painted Interior Finish - Designer Black Int  
Black Weather Strip Package  
1 Matte Black Sash Lock  
Exterior Aluminum Half Screen  
Stone White Surround  
Bright View Mesh  
4 9/16" Jamb  
Nailing Fin  
\*\*\*Note: Divided lite cut alignment may not be accurately represented in the OMS drawing. Please consult your local representative for exact specifications.  
\*\*\*Note: Unit Availability and Price is Subject to Change

A

Line #3	Mark Unit:	Net Price:	760.31
Qty: 4		Ext. Net Price:	3,041.24

MARVIN



As Viewed From The Exterior

Entered As: RO  
RO 28" X 24"

Mixed Exterior Colors  
Stone White Exterior  
**Color Mismatch: Frame and Sash Exterior Colors do not match.**  
Painted Interior Finish - Designer Black Pine Interior  
Elevate Awning - Roto Operating  
Rough Opening 28" X 24"  
Ebony Exterior  
Painted Interior Finish - Designer Black Pine Interior  
IG  
Low E2 w/Argon  
Stainless Perimeter and Spacer Bar  
7/8" SDL - With Spacer Bar - Stainless  
Rectangular - Special Cut 2W2H  
Ebony Ext - Painted Interior Finish - Designer Black Int  
Matte Black Folding Handle  
Interior Aluminum Screen  
Bright View Mesh  
Ebony Surround  
4 9/16" Jamb  
Nailing Fin

B

OMS Ver. 0004.08.01 (Current)

Processed on: 5/2/2024 3:04:29 PM

For product warranty information please visit, [www.marvin.com/support/warranty](http://www.marvin.com/support/warranty).

Page 3 of 6

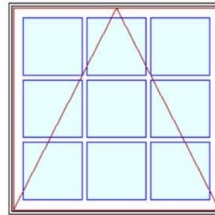
OMS Ver. 0004.08.01 (Current)  
Product availability and pricing subject to change.

AMAROSA  
PORTSMOUTH, NH  
Quote Number: T151NNE

\*\*\*Note: Divided lite cut alignment may not be accurately represented in the OMS drawing. Please consult your local representative for exact specifications.  
\*\*\*Note: Unit Availability and Price is Subject to Change

Line #4	Mark Unit:	Net Price:	1,087.92
Qty: 1		Ext. Net Price:	1,087.92

MARVIN



As Viewed From The Exterior

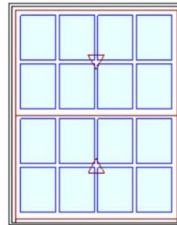
Entered As: RO  
RO 40" X 38"

Mixed Exterior Colors  
Stone White Exterior  
**Color Mismatch: Frame and Sash Exterior Colors do not match.**  
Painted Interior Finish - Designer Black Pine Interior  
Elevate Awning - Roto Operating  
Rough Opening 40" X 38"  
Ebony Exterior  
Painted Interior Finish - Designer Black Pine Interior  
IG  
Low E2 w/Argon  
Stainless Perimeter and Spacer Bar  
7/8" SDL - With Spacer Bar - Stainless  
Rectangular - Special Cut 3W3H  
Ebony Ext - Painted Interior Finish - Designer Black Int  
Matte Black Folding Handle  
Interior Aluminum Screen  
Bright View Mesh  
Ebony Surround  
4 9/16" Jamb  
Nailing Fin  
\*\*\*Note: Divided lite cut alignment may not be accurately represented in the OMS drawing. Please consult your local representative for exact specifications.  
\*\*\*Note: Unit Availability and Price is Subject to Change

C

Line #5	Mark Unit: EGRESS	Net Price:	1,411.90
Qty: 1		Ext. Net Price:	1,411.90

MARVIN



As Viewed From The Exterior

Entered As: RO  
RO 44 1/2" X 54 1/2"

Mixed Exterior Colors  
Stone White Exterior  
**Color Mismatch: Frame and Sash Exterior Colors do not match.**  
Painted Interior Finish - Designer Black Pine Interior  
Elevate Double Hung  
Rough Opening 44 1/2" X 54 1/2"  
Top Sash  
Ebony Exterior  
Painted Interior Finish - Designer Black Pine Interior  
IG  
Low E2 w/Argon  
Stainless Perimeter and Spacer Bar  
7/8" SDL - With Spacer Bar - Stainless  
Rectangular - Special Cut 4W2H  
Ebony Ext - Painted Interior Finish - Designer Black Int  
Bottom Sash  
Ebony Exterior  
Painted Interior Finish - Designer Black Pine Interior  
IG  
Low E2 w/Argon  
Stainless Perimeter and Spacer Bar  
7/8" SDL - With Spacer Bar - Stainless  
Rectangular - Special Cut 4W2H  
Ebony Ext - Painted Interior Finish - Designer Black Int  
Black Weather Strip Package  
2 Matte Black Sash Lock  
Exterior Aluminum Half Screen  
Stone White Surround  
Bright View Mesh  
4 9/16" Jamb  
Nailing Fin  
\*\*\*Note: Divided lite cut alignment may not be accurately represented in the OMS drawing. Please consult your local representative for exact specifications.

D

OMS Ver. 0004.08.01 (Current)

Processed on: 5/2/2024 3:04:29 PM

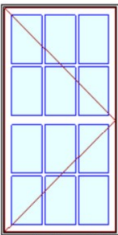
For product warranty information please visit, [www.marvin.com/support/warranty](http://www.marvin.com/support/warranty).

Page 4 of 6

\*\*\*Note: Unit Availability and Price is Subject to Change

Line #6	Mark Unit: EGRESS	Net Price:	1,227.80
Qty: 1		Ext. Net Price:	USD 1,227.80

MARVIN 



As Viewed From The Exterior

Entered As: RO  
RO 31 1/2" X 59"

- Mixed Exterior Colors
- Stone White Exterior
- Color Mismatch: Frame and Sash Exterior Colors do not match.**
- Painted Interior Finish - Designer Black Pine Interior
- Elevate Casement - Right Hand
- Rough Opening 31 1/2" X 59"
- Ebony Exterior
- Painted Interior Finish - Designer Black Pine Interior
- IG
- Low E2 w/Argon
- Stainless Perimeter and Spacer Bar
- 2 11/32" Simulated Rail Rectangular
- Standard 1.0:2.0
- 7/8" SDL - With Spacer Bar - Stainless
- Top Cut 3W2H - Bottom Cut 3W2H
- 12 Rect Lites
- Ebony Ext - Painted Interior Finish - Designer Black Int
- Matte Black Folding Handle
- Interior Aluminum Screen
- Bright View Mesh
- Ebony Surround
- 4 9/16" Jamb
- Nailing Fin
- \*\*\*Note: Divided lite cut alignment may not be accurately represented in the OMS drawing. Please consult your local representative for exact specifications.
- \*\*\*Note: Unit Availability and Price is Subject to Change

E

Project Subtotal Net Price: USD 12,371.56  
0.000% Sales Tax: USD 0.00  
Project Total Net Price: USD 12,371.56

Please see photos showing letters coordinating with windows depicted on quote sheets.



A

B

A

D

B

C



A

A

A

B

B

6  
6







Marvin Elevate window style as shown here (48 South St.)



Similar trim style to be used as shown here (48 South St.)

All windows to have 1/2 screens and 6 over 6 pane style where currently shown and available.

**5. 425 Islington Street**

**-TBD**

**Background:** The applicant is seeking approval for window replacements.

**Staff Comment:** TBD

**Stipulations:**

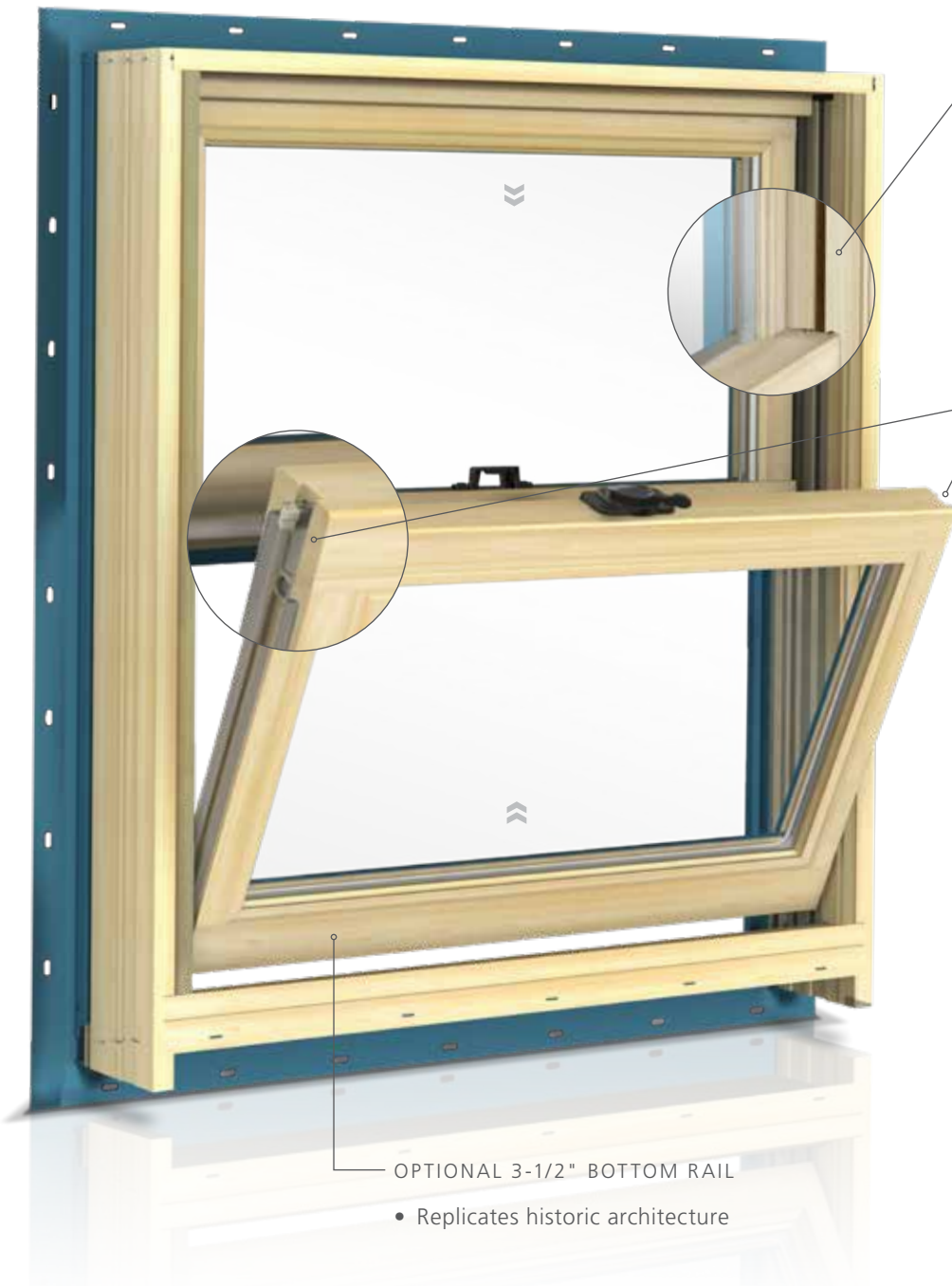
1. \_\_\_\_\_
2. \_\_\_\_\_
3. \_\_\_\_\_



JELD-WEN®

CUSTOM™ WOOD  
WINDOWS AND PATIO DOORS

# DOUBLE-HUNG FEATURES & OPTIONS



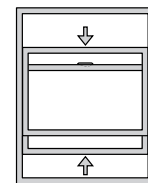
## CONCEALED JAMB LINER

- Replicates historic architecture
- No exposed track
- Cover will match interior species and finish



## CAM-LOCK WITH CONCEALED TILT LATCH

- Tilt sash allows for easy cleaning from the inside of your home
- A single mechanism controls both the locking and tilting of the sash
- Tilt latches are concealed within the sash for a clean, streamlined appearance



## DOUBLE-HUNG

Uses moving sash on top and bottom to increase usability and air circulation

## OPTIONAL 3-1/2" BOTTOM RAIL

- Replicates historic architecture

## AVAILABLE HARDWARE FINISHES



Oil-Rubbed Bronze\*†

Antique Brass

Polished Brass

Brushed Chrome

Polished Chrome

Powder-Coat White

Chestnut Bronze

Desert Sand

Powder-Coat Black

Satin Nickel†

\*Oil-Rubbed Bronze will change in appearance over time

†Available with optional PVD finish for increased resistance to wear and discoloration

Actual colors may vary from samples shown due to printing process and/or differing monitor calibrations.