



| Rev # | Date | Description |
|-------|------|-------------|
|       |      |             |
|       |      |             |
|       |      |             |

HDC Submission  
24-021

115 Market Street

115 Market Street  
Portsmouth, NH

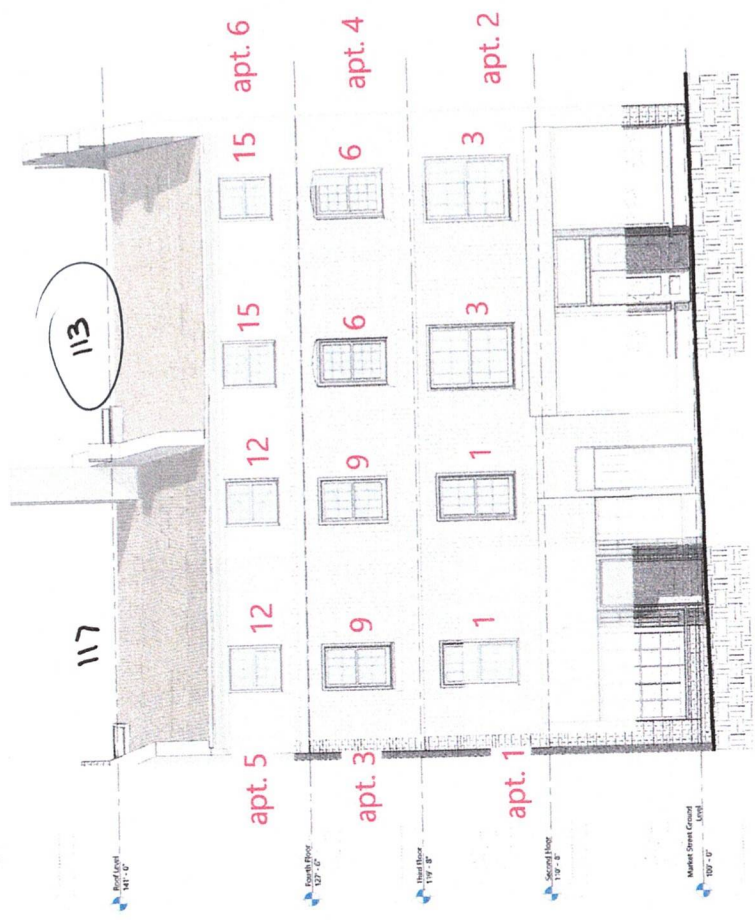
Market Street  
Elevation

A200

Scale: 1/4" = 1'-0"



EXISTING MARKET STREET PHOTO REFERENCE IMAGE, NOT TO SCALE



0 2'-0" 4'-0" 8'-0"  
SCALE 1/4" = 1'-0"

1 Existing Market Street Elevation Copy 1  
A200 1/4" = 1'-0"





PROJECT NUMBER:

DATE:

OWNER:

ARCHITECT:

SCALE:

SHEET:

TITLE:

DESCRIPTION:

REVISIONS:

DATE:

DRAWN:

CHECKED:

DATE:

SCALE:

SHEET:

TITLE:

DESCRIPTION:

REVISIONS:

DATE:

DRAWN:

CHECKED:

DATE:

SCALE:

SHEET:

TITLE:

DESCRIPTION:

REVISIONS:

DATE:

DRAWN:

CHECKED:

DATE:

SCALE:

SHEET:

TITLE:

DESCRIPTION:

REVISIONS:

DATE:

DRAWN:

CHECKED:

DATE:

SCALE:

SHEET:

TITLE:

DESCRIPTION:

REVISIONS:

DATE:

DRAWN:

CHECKED:

DATE:

SCALE:

SHEET:

TITLE:

DESCRIPTION:

REVISIONS:

DATE:

DRAWN:

CHECKED:

DATE:

SCALE:

SHEET:

TITLE:

DESCRIPTION:

REVISIONS:

DATE:

DRAWN:

CHECKED:

DATE:

SCALE:

SHEET:

TITLE:

DESCRIPTION:

REVISIONS:

DATE:

DRAWN:

CHECKED:

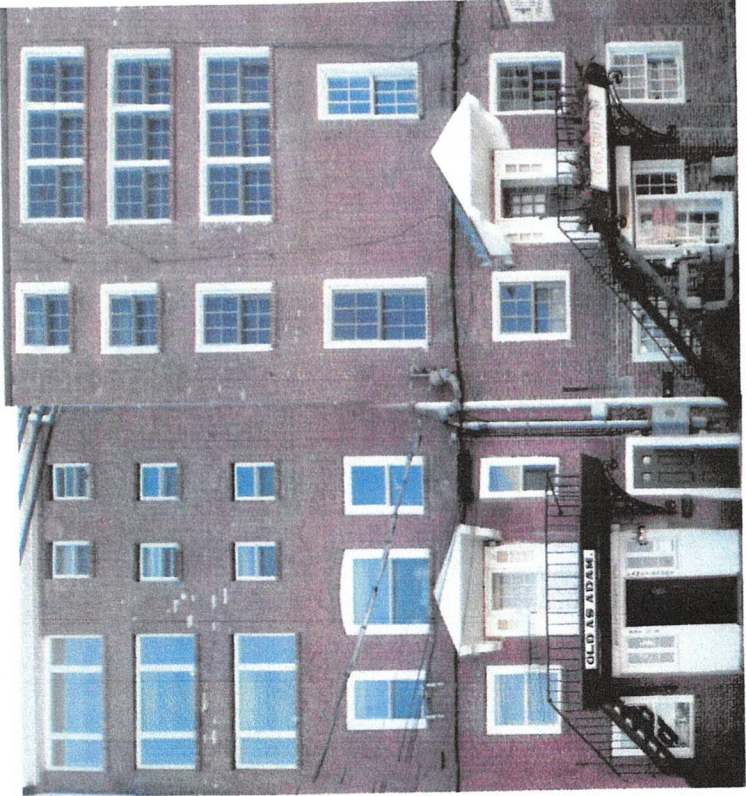
DATE:

SCALE:

SHEET:

TITLE:

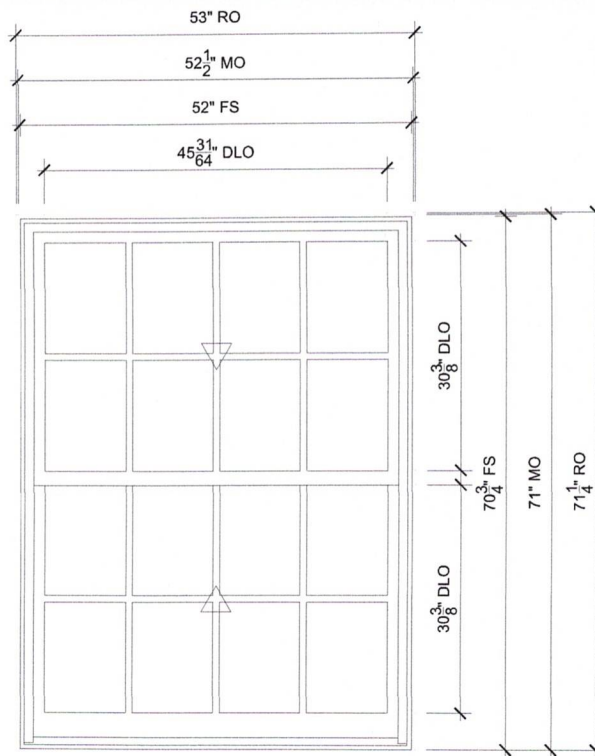
DESCRIPTION:



EXISTING CERES STREET PHOTO REFERENCE IMAGE. NOT TO SCALE



1. Proposed Cerès Street Elevation  
1/4" = 1'-0"



**115 MARKET ST APT 2 BEDS 1/2**  
 SCALE: 1/2" = 1'-0"

## SPECIFICATIONS

Line #: 3

Qty: 2

Mark Unit: 115 MARKET ST APT 2 BEDS 1/2

Product Line: Ultimate

Unit Description: Double Hung G2

Rough Opening: 53" X 71 1/4"

Frame Size: 52" X 70 3/4"

Masonry Opening: 52 1/2" X 71"

Sash Opening: 53" X 71 1/4"

Inside Opening: 53" X 71 1/4"

Exterior Finish: Stone White

Species: Pine

Interior Finish: Painted Interior Finish - White

Unit Type: Double Hung G2

Call Number: None

Glass Information: IG, Low E2 w/Argon, Black

Divider Type: 7/8" Rectangular SDL W/ Spacer - Black

Hardware Type: Sash Lock, Lift Type : None, No Finger Pull, Top Sash Limiter : None,

Bottom Sash Limiter : None, Window Opening Control Device

Screen Type: Extruded Aluminum Screen

Hardware Color: Bronze

Screen Surround Color: Stone White

Screen Mesh Type: Bright View Mesh

Jamb Depth: 4 9/16"



PROJ/JOB: MCB 115 MARKET ST / MCB 115 MARKET ST  
 DIST/DEALER: ELDREDGE LUMBER & HARDWARE-YORK-GO  
 DRAWN: HEATHER DITZEL  
 QUOTE#: HSPJJE5 PK VER: 0004.13.00

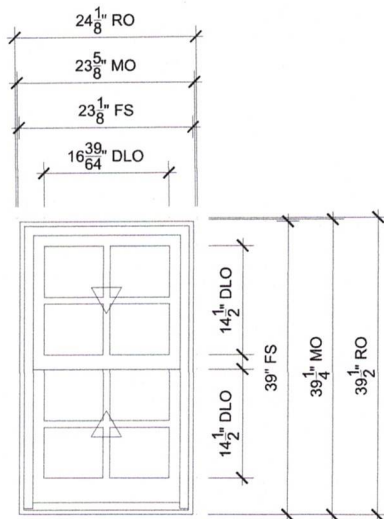
CREATED: 01/20/2025 REVISION:

SHEET

3

OF 17





## 115 MARKET ST APT 1&2 KITCH

SCALE: 1/2" = 1'-0"

### SPECIFICATIONS

Line #: 5

Qty: 2

Mark Unit: 115 MARKET ST APT 1&2 kitch

Product Line: Ultimate

Unit Description: Double Hung G2

Rough Opening: 24 1/8" X 39 1/2"

Frame Size: 23 1/8" X 39"

Masonry Opening: 23 5/8" X 39 1/4"

Sash Opening: 24 1/8" X 39 1/2"

Inside Opening: 24 1/8" X 39 1/2"

Exterior Finish: Stone White

Species: Pine

Interior Finish: Painted Interior Finish - White

Unit Type: Double Hung G2

Call Number: None

Glass Information: IG, Low E2 w/Argon, Black

Divider Type: 7/8" Rectangular SDL W/ Spacer - Black

Hardware Type: Sash Lock, Lift Type : None, No Finger Pull, Top Sash Limiter : None,

Bottom Sash Limiter : None

Screen Type: Aluminum Screen

Hardware Color: Bronze

Screen Surround Color: Stone White

Screen Mesh Type: Bright View Mesh

Jamb Depth: 4 9/16"



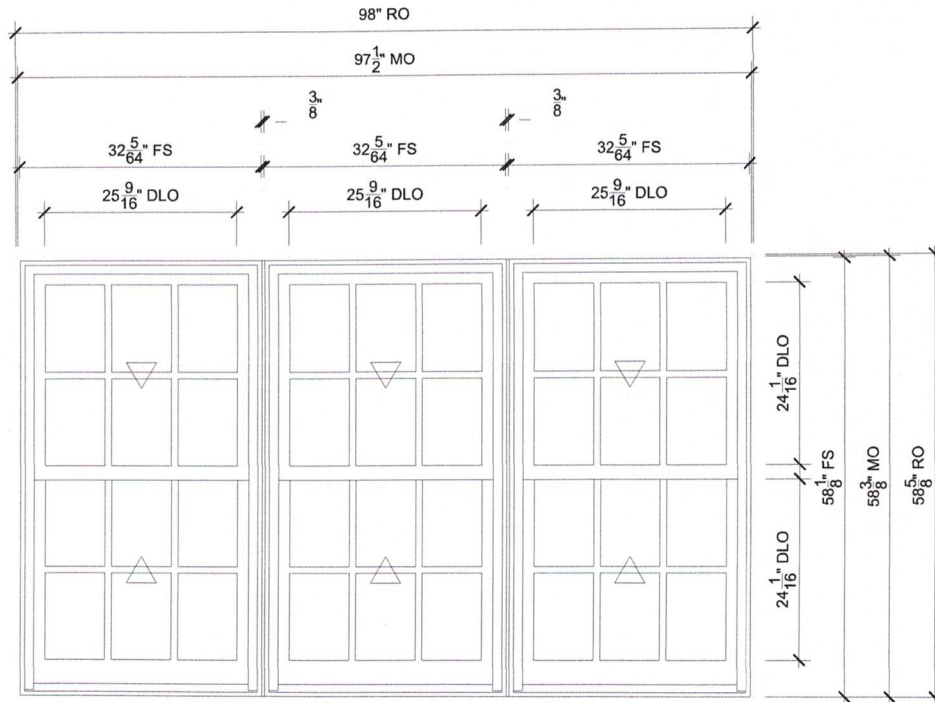
PROJ/JOB: MCB 115 MARKET ST / MCB 115 MARKET ST  
 DIST/DEALER: ELDREDGE LUMBER & HARDWARE-YORK-GO  
 DRAWN: HEATHER DITZEL  
 QUOTE#: HSHPE5 PK VER: 0004.13.00

CREATED: 01/20/2025 REVISION:

SHEET

5

OF 17



**115 MARKET APT 2 LIV RM CERE**

SCALE: 1/2" = 1'-0"

**SPECIFICATIONS**

Line #: 4

Qty: 1

Mark Unit: 115 MARKET APT 2 LIV RM CERE

Product Line: Ultimate

Unit Description: Marvin Assembly

Rough Opening: 98" X 58 5/8"

Frame Size: 97" X 58 1/8"

Masonry Opening: 97 1/2" X 58 3/8"

Sash Opening: 98" X 58 5/8"

Inside Opening: 98" X 58 5/8"

Exterior Finish: Stone White

Species: Pine

Interior Finish: Painted Interior Finish - White

Unit Type: Double Hung G2

Call Number: None

Glass Information: IG, Low E2 w/Argon, Black, Tempered Low E2 w/Argon

Divider Type: 7/8" Rectangular SDL W/ Spacer - Black

Hardware Type: Sash Lock, Lift Type : None, No Finger Pull, Top Sash Limiter : None,

Bottom Sash Limiter : None, Window Opening Control Device

Screen Type: Extruded Aluminum Screen

Hardware Color: Bronze

Screen Surround Color: Stone White

Screen Mesh Type: Bright View Mesh

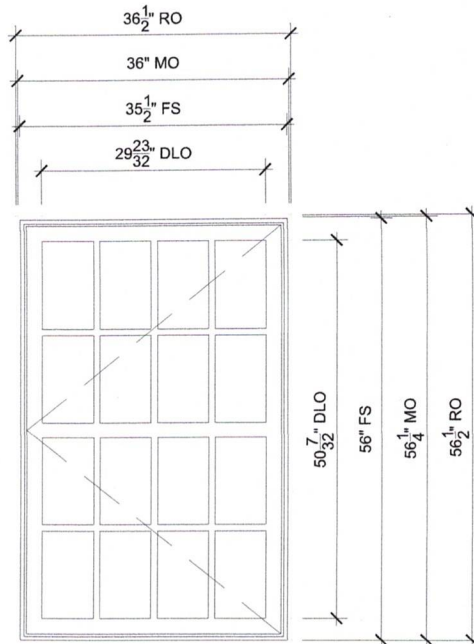
Jamb Depth: 4 9/16"



PROJ/JOB: MCB 115 MARKET ST / MCB 115 MARKET ST  
 DIST/DEALER: ELDREDGE LUMBER & HARDWARE-YORK-GO  
 DRAWN: HEATHER DITZEL  
 QUOTE#: HSHPJE5 PK VER: 0004.13.00

CREATED: 01/20/2025 REVISION:

SHEET  
 4  
 OF 17



**115 MARKET ST APT 4 BEDS 1/2**

SCALE: 1/2" = 1'-0"

## SPECIFICATIONS

Line #: 6

Qty: 2

Mark Unit: 115 MARKET ST APT 4 BEDs 1/2

Product Line: Ultimate

Unit Description: Casement

Rough Opening: 36 1/2" X 56 1/2"

Frame Size: 35 1/2" X 56"

Masonry Opening: 36" X 56 1/4"

Sash Opening: 36 1/2" X 56 1/2"

Inside Opening: 36 1/2" X 56 1/2"

Exterior Finish: Stone White

Species: Pine

Interior Finish: Painted Interior Finish - White

Unit Type: Casement, Left Hand

Call Number: None

Glass Information: IG - 3/4", Low E2 w/Argon, Black

Divider Type: 7/8" Variable Vertical Rectangle SDL W/ Spacer - Black

Hardware Type: Folding Handle, No Sash Travel Limiter, Window Opening Control Device

Screen Type: Extruded Aluminum Screen

Hardware Color: Bronze, Stainless Steel

Screen Surround Color: White

Screen Mesh Type: Bright View Mesh

Jamb Depth: 4 9/16"



PROJ/JOB: MCB 115 MARKET ST / MCB 115 MARKET ST  
 DIST/DEALER: ELDRIDGE LUMBER & HARDWARE-YORK-GO  
 DRAWN: HEATHER DITZEL  
 QUOTE#: HSHPJES PK VER: 0004.13.00

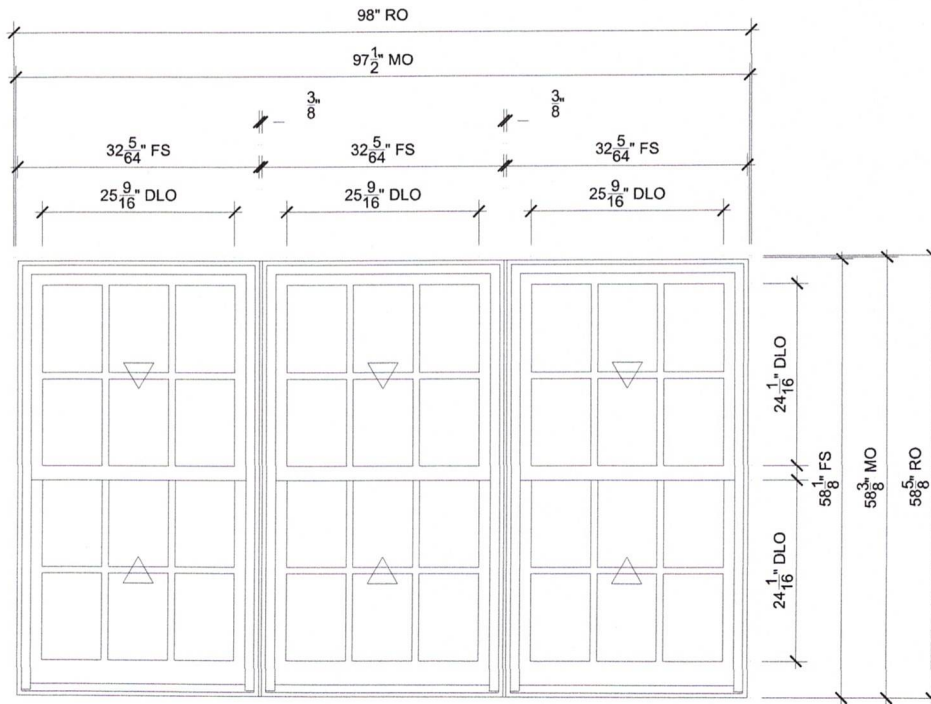
CREATED: 01/20/2025 REVISION:

SHEET

6

OF 17





## 115 MARKET APT 4 LIV RM CERE

SCALE: 1/2" = 1'-0"

### SPECIFICATIONS

Line #: 7

Qty: 1

Mark Unit: 115 MARKET APT 4 LIV RM CERE

Product Line: Ultimate

Unit Description: Marvin Assembly

Rough Opening: 98" X 58 5/8"

Frame Size: 97" X 58 1/8"

Masonry Opening: 97 1/2" X 58 3/8"

Sash Opening: 98" X 58 5/8"

Inside Opening: 98" X 58 5/8"

Exterior Finish: Stone White

Species: Pine

Interior Finish: Painted Interior Finish - White

Unit Type: Double Hung G2

Call Number: None

Glass Information: IG, Low E2 w/Argon, Black, Tempered Low E2 w/Argon

Divider Type: 7/8" Rectangular SDL W/ Spacer - Black

Hardware Type: Sash Lock, Lift Type : None, No Finger Pull, Top Sash Limiter : None,  
Bottom Sash Limiter : None, Window Opening Control Device

Screen Type: Extruded Aluminum Screen

Hardware Color: Bronze

Screen Surround Color: Stone White

Screen Mesh Type: Bright View Mesh

Jamb Depth: 4 9/16"



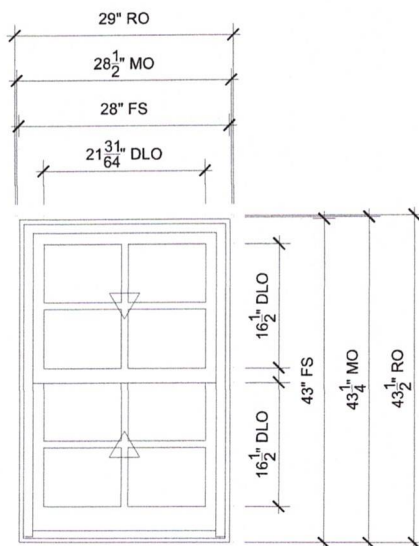
PROJ/JOB: MCB 115 MARKET ST / MCB 115 MARKET ST  
DIST/DEALER: ELDREDGE LUMBER & HARDWARE-YORK-GO  
DRAWN: HEATHER DITZEL  
QUOTE#: HSPJE5 PK VER: 0004.13.00

CREATED: 01/20/2025 REVISION:

SHEET

7

OF 17



## 115 MARKET ST APT 4 KITCH

SCALE: 1/2" = 1'-0"

### SPECIFICATIONS

Line #: 8

Qty: 1

Mark Unit: 115 MARKET ST APT 4 kitch

Product Line: Ultimate

Unit Description: Double Hung G2

Rough Opening: 29" X 43 1/2"

Frame Size: 28" X 43"

Masonry Opening: 28 1/2" X 43 1/4"

Sash Opening: 29" X 43 1/2"

Inside Opening: 29" X 43 1/2"

Exterior Finish: Stone White

Species: Pine

Interior Finish: Painted Interior Finish - White

Unit Type: Double Hung G2

Call Number: None

Glass Information: IG, Low E2 w/Argon, Black

Divider Type: 7/8" Rectangular SDL W/ Spacer - Black

Hardware Type: Sash Lock, Lift Type : None, No Finger Pull, Top Sash Limiter : None,

Bottom Sash Limiter : None

Screen Type: Aluminum Screen

Hardware Color: Bronze

Screen Surround Color: Stone White

Screen Mesh Type: Bright View Mesh

Jamb Depth: 4 9/16"

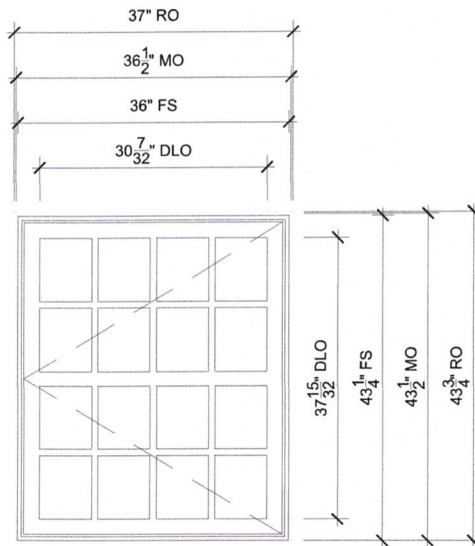


PROJ/JOB: MCB 115 MARKET ST / MCB 115 MARKET ST  
 DIST/DEALER: ELDRIDGE LUMBER & HARDWARE-YORK-GO  
 DRAWN: HEATHER DITZEL  
 QUOTE#: HSHPJE5 PK VER: 0004.13.00

CREATED: 01/20/2025 REVISION:

SHEET  
 8  
 OF 17





## 115 MARKET ST APT 6 BEDS

SCALE: 1/2" = 1'-0"

### SPECIFICATIONS

Line #: 15

Qty: 2

Mark Unit: 115 MARKET ST APT 6 BEDS

Product Line: Ultimate

Unit Description: Casement

Rough Opening: 37" X 43 3/4"

Frame Size: 36" X 43 1/4"

Masonry Opening: 36 1/2" X 43 1/2"

Sash Opening: 37" X 43 3/4"

Inside Opening: 37" X 43 3/4"

Exterior Finish: Stone White

Species: Pine

Interior Finish: Painted Interior Finish - White

Unit Type: Casement, Left Hand

Call Number: None

Glass Information: IG - 3/4", Low E2 w/Argon, Black

Divider Type: 7/8" Variable Vertical Rectangle SDL W/ Spacer - Black

Hardware Type: Folding Handle, No Sash Travel Limiter, Window Opening Control Device

Screen Type: Aluminum Screen

Hardware Color: Bronze, Stainless Steel

Screen Surround Color: White

Screen Mesh Type: Bright View Mesh

Jamb Depth: 4 9/16"



PROJ/JOB: MCB 115 MARKET ST / MCB 115 MARKET ST  
 DIST/DEALER: ELDREDGE LUMBER & HARDWARE-YORK-GO  
 DRAWN: HEATHER DITZEL  
 QUOTE#: HSHPJ5

PK VER: 0004.13.00

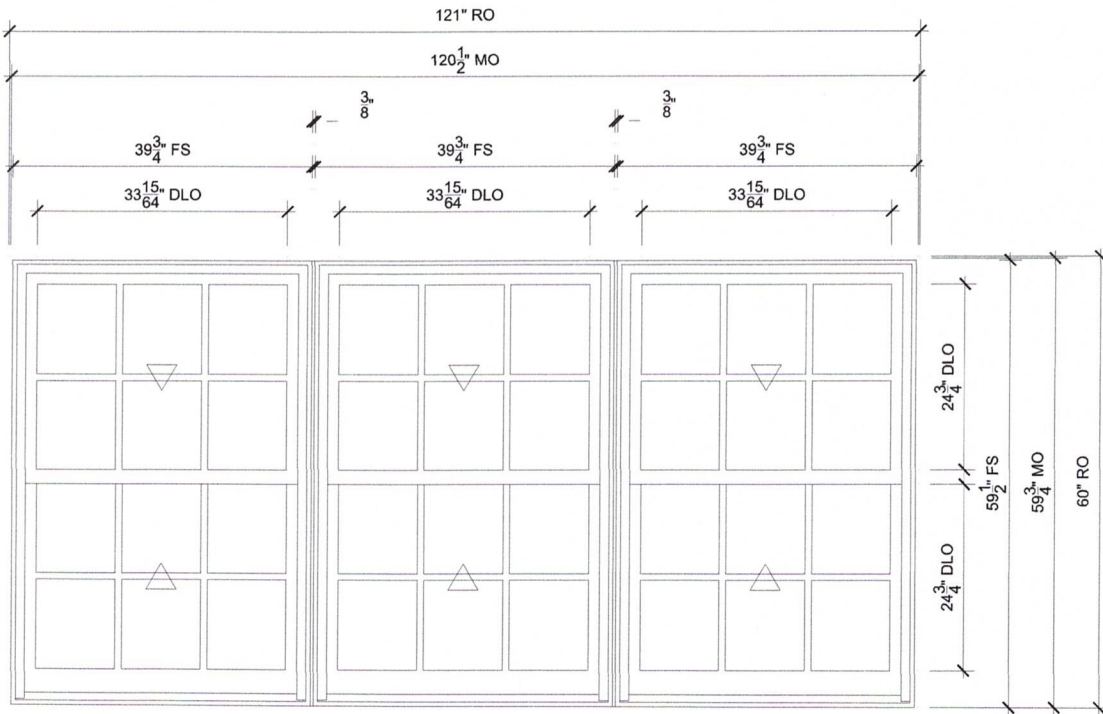
CREATED: 01/20/2025

REVISION:

SHEET

15

OF 17



## 115 MARKET APT 6 LIV RM CERE

SCALE: 1/2" = 1'-0"

### SPECIFICATIONS

Line #: 16

Qty: 1

Mark Unit: 115 MARKET APT 6 LIV RM CERE

Product Line: Ultimate

Unit Description: Marvin Assembly

Rough Opening: 121" X 60"

Frame Size: 120" X 59 1/2"

Masonry Opening: 120 1/2" X 59 3/4"

Sash Opening: 121" X 60"

Inside Opening: 121" X 60"

Exterior Finish: Stone White

Species: Pine

Interior Finish: Painted Interior Finish - White

Unit Type: Double Hung G2

Call Number: None

Glass Information: IG, Low E2 w/Argon, Black, Tempered Low E2 w/Argon

Divider Type: 7/8" Rectangular SDL W/ Spacer - Black

Hardware Type: Sash Lock, Lift Type : None, No Finger Pull, Top Sash Limiter : None,  
Bottom Sash Limiter : None, Window Opening Control Device

Screen Type: Extruded Aluminum Screen

Hardware Color: Bronze

Screen Surround Color: Stone White

Screen Mesh Type: Bright View Mesh

Jamb Depth: 4 9/16"



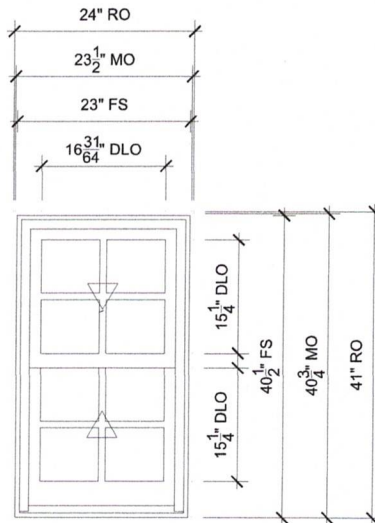
PROJ/JOB: MCB 115 MARKET ST / MCB 115 MARKET ST  
 DIST/DEALER: ELDREDGE LUMBER & HARDWARE-YORK-GO  
 DRAWN: HEATHER DITZEL  
 QUOTE#: HSHPE5

PK VER: 0004.13.00

CREATED: 01/20/2025

REVISION:

SHEET  
 16  
 OF 17



## 115 MARKET ST APT 6 KITCH

SCALE: 1/2" = 1'-0"

### SPECIFICATIONS

Line #: 17

Qty: 1

Mark Unit: 115 MARKET ST APT 6 kitch

Product Line: Ultimate

Unit Description: Double Hung G2

Rough Opening: 24" X 41"

Frame Size: 23" X 40 1/2"

Masonry Opening: 23 1/2" X 40 3/4"

Sash Opening: 24" X 41"

Inside Opening: 24" X 41"

Exterior Finish: Stone White

Species: Pine

Interior Finish: Painted Interior Finish - White

Unit Type: Double Hung G2

Call Number: None

Glass Information: IG, Low E2 w/Argon, Black

Divider Type: 7/8" Rectangular SDL W/ Spacer - Black

Hardware Type: Sash Lock, Lift Type : None, No Finger Pull, Top Sash Limiter : None,

Bottom Sash Limiter : None

Screen Type: Aluminum Screen

Hardware Color: Bronze

Screen Surround Color: Stone White

Screen Mesh Type: Bright View Mesh

Jamb Depth: 4 9/16"



PROJ/JOB: MCB 115 MARKET ST / MCB 115 MARKET ST  
 DIST/DEALER: ELDREDGE LUMBER & HARDWARE-YORK-GO  
 DRAWN: HEATHER DITZEL  
 QUOTE#: HSHPJE5

PK VER: 0004.13.00

CREATED: 01/20/2025

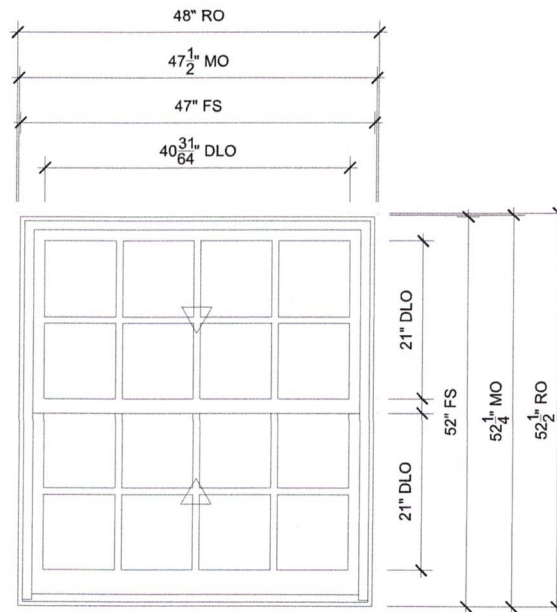
REVISION:

SHEET

17

OF 17





## 35 CERES ST LIV RM

SCALE: 1/2" = 1'-0"

### SPECIFICATIONS

Line #: 7

Qty: 1

Mark Unit: 35 CERES ST LIV RM

Product Line: Ultimate

Unit Description: Double Hung G2

Rough Opening: 48" X 52 1/2"

Frame Size: 47" X 52"

Masonry Opening: 47 1/2" X 52 1/4"

Sash Opening: 48" X 52 1/2"

Inside Opening: 48" X 52 1/2"

Exterior Finish: Stone White

Species: Pine

Interior Finish: Painted Interior Finish - White

Unit Type: Double Hung G2

Call Number: None

Glass Information: IG, Low E2 w/Argon, Black

Divider Type: 7/8" Rectangular SDL W/ Spacer - Black

Hardware Type: Sash Lock, Lift Type : None, No Finger Pull, Top Sash Limiter : None,

Bottom Sash Limiter : None, Window Opening Control Device

Screen Type: Aluminum Screen

Hardware Color: Bronze

Screen Surround Color: Stone White

Screen Mesh Type: Bright View Mesh

Jamb Depth: 4 9/16"



PROJ/JOB: MCB 95 MARKET ST / MCB 95 MARKET ST  
 DIST/DEALER: ELDREDGE LUMBER & HARDWARE-YORK-GO  
 DRAWN: HEATHER DITZEL  
 QUOTE#: S486SF8

PK VER: 0004.13.00

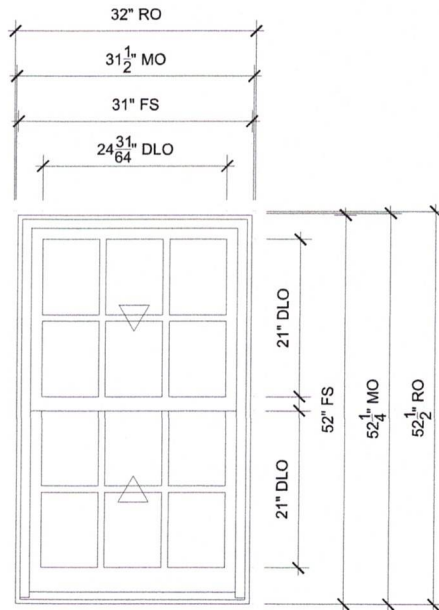
CREATED: 01/20/2025

REVISION:

SHEET

7

OF 13



## 35 CERES ST FIRE ESCAPE

SCALE: 1/2" = 1'-0"

### SPECIFICATIONS

Line #: 8

Qty: 1

Mark Unit: 35 CERES ST FIRE ESCAPE

Product Line: Ultimate

Unit Description: Double Hung G2

Rough Opening: 32" X 52 1/2"

Frame Size: 31" X 52"

Masonry Opening: 31 1/2" X 52 1/4"

Sash Opening: 32" X 52 1/2"

Inside Opening: 32" X 52 1/2"

Exterior Finish: Stone White

Species: Pine

Interior Finish: Painted Interior Finish - White

Unit Type: Double Hung G2

Call Number: None

Glass Information: IG, Low E2 w/Argon, Black

Divider Type: 7/8" Rectangular SDL W/ Spacer - Black

Hardware Type: Sash Lock, Lift Type : None, No Finger Pull, Top Sash Limiter : None,

Bottom Sash Limiter : None, Window Opening Control Device

Screen Type: Aluminum Screen

Hardware Color: Bronze

Screen Surround Color: Stone White

Screen Mesh Type: Bright View Mesh

Jamb Depth: 4 9/16"



PROJ/JOB: MCB 95 MARKET ST / MCB 95 MARKET ST  
 DIST/DEALER: ELDREDGE LUMBER & HARDWARE-YORK-GO  
 DRAWN: HEATHER DITZEL  
 QUOTE#: S486SF8

PK VER: 0004.13.00

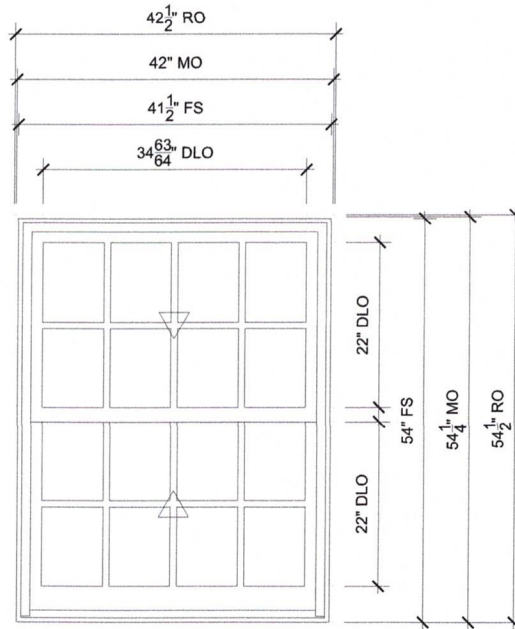
CREATED: 01/20/2025

REVISION:

SHEET

8

OF 13



## 33 CERES ST LEFT OF DR

SCALE: 1/2" = 1'-0"

### SPECIFICATIONS

Line #: 9

Qty: 1

Mark Unit: 33 CERES ST LEFT OF DR

Product Line: Ultimate

Unit Description: Double Hung G2

Rough Opening: 42 1/2" X 54 1/2"

Frame Size: 41 1/2" X 54"

Masonry Opening: 42" X 54 1/4"

Sash Opening: 42 1/2" X 54 1/2"

Inside Opening: 42 1/2" X 54 1/2"

Exterior Finish: Stone White

Species: Pine

Interior Finish: Painted Interior Finish - White

Unit Type: Double Hung G2

Call Number: None

Glass Information: IG, Tempered Low E2 w/Argon, Black

Divider Type: 7/8" Rectangular SDL W/ Spacer - Black

Hardware Type: Sash Lock, Lift Type : None, No Finger Pull, Top Sash Limiter : None,

Bottom Sash Limiter : None, Window Opening Control Device

Screen Type: Aluminum Screen

Hardware Color: Bronze

Screen Surround Color: Stone White

Screen Mesh Type: Bright View Mesh

Jamb Depth: 4 9/16"



PROJ/JOB: MCB 95 MARKET ST / MCB 95 MARKET ST  
 DIST/DEALER: ELDREDGE LUMBER & HARDWARE-YORK-GO  
 DRAWN: HEATHER DITZEL  
 QUOTE#: S486SF8

PK VER: 0004.13.00

CREATED: 01/20/2025

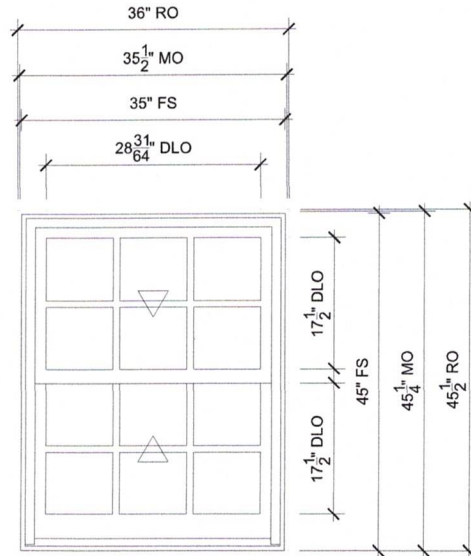
REVISION:

SHEET

9

OF 13





## 39 CERES ST LEFT DR BONITA

SCALE: 1/2" = 1'-0"

### SPECIFICATIONS

Line #: 10

Qty: 1

Mark Unit: 39 CERES ST LEFT DR BONITA

Product Line: Ultimate

Unit Description: Double Hung G2

Rough Opening: 36" X 45 1/2"

Frame Size: 35" X 45"

Masonry Opening: 35 1/2" X 45 1/4"

Sash Opening: 36" X 45 1/2"

Inside Opening: 36" X 45 1/2"

Exterior Finish: Stone White

Species: Pine

Interior Finish: Painted Interior Finish - White

Unit Type: Double Hung G2

Call Number: None

Glass Information: IG, Tempered Low E2 w/Argon, Black

Divider Type: 7/8" Rectangular SDL W/ Spacer - Black

Hardware Type: Sash Lock, Lift Type : None, No Finger Pull, Top Sash Limiter : None,

Bottom Sash Limiter : None, Window Opening Control Device

Screen Type: Aluminum Screen

Hardware Color: Bronze

Screen Surround Color: Stone White

Screen Mesh Type: Bright View Mesh

Jamb Depth: 4 9/16"



PROJ/JOB: MCB 95 MARKET ST / MCB 95 MARKET ST  
 DIST/DEALER: ELDRIDGE LUMBER & HARDWARE-YORK-GO  
 DRAWN: HEATHER DITZEL  
 QUOTE#: S486SF8 PK VER: 0004.13.00

CREATED: 01/20/2025 REVISION:

SHEET

10

OF 13