

24 MARKET STREET - HDC APPLICATION FOR APPROVAL

We respectfully submit this application for approval for removal of existing wood paneled storefront to be replaced with new solid wood Sapele (Mahogany) paneled storefront assembly, brick repairs, HVAC upgrade:

1. MARKET STREET STOREFRONT ELEVATION

- Much of the existing storefront wood paneling is rotting and has been created by several repairs over time.
- The historic Granite header over the storefront stops short of the side window below with timber exposed to the elements.
- The original iron corner detail and copper downspout will remain.

We propose to remove the existing wood trim & paneling and replace it with a solid wood Sapele (Mahogany) system. The existing granite, storefront windows and door will remain. The existing transom over the door will be replaced with a panel detail.

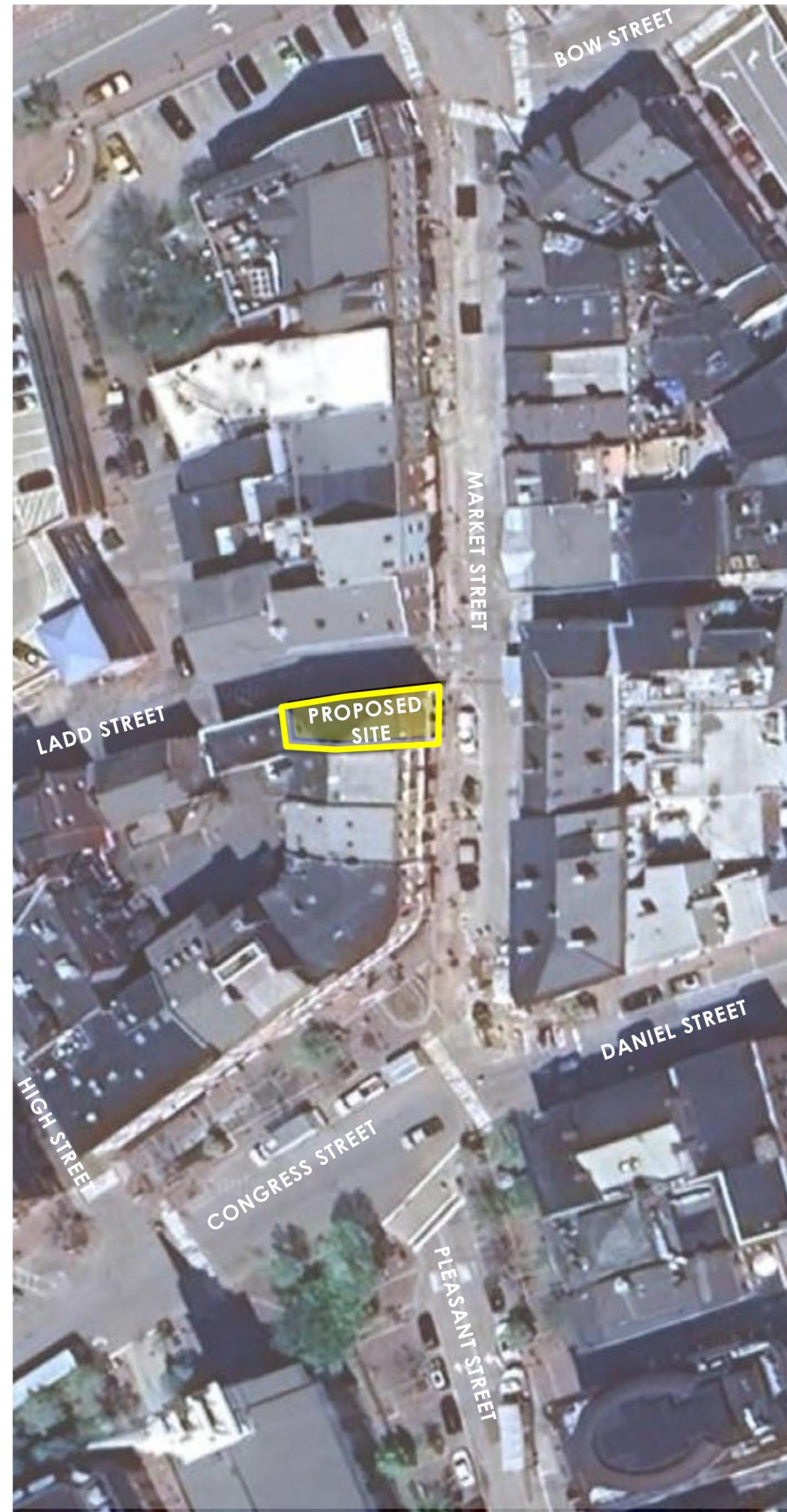
2. LADD STREET ELEVATION

- This elevation contains an obsolete fire alarm, and a through wall AC unit that extends over the sidewalk.
- There are also two entry doors with transoms.

We propose to remove the obsolete fire alarm, remove the through wall AC unit, and repair the waterstruck brick wall with new waterstruck brick. The side entry door with the glass transom will remain, and the wood transom over the second door will be modified to contain a louver. The louver will support a new interior HVAC system for the commercial space.

Thank you for your consideration.
Sincerely,

Carla Goodknight, AIA
Principal, CJ Architects LLC
Representing owners:
409 Franklin Pierce Highway, LLC.



EXISTING ROT CONDITONS



EXISTING DOWNSPOUT AND HISTORIC IRON PILASTER TO REMAIN



EXISTING ROT CONDITONS



EXISTING ROT CONDITONS

24 MARKET STREET
PORTSMOUTH, NEW HAMPSHIRE

AGENDA & AERIAL VIEW
HDC APPLICATION FOR APPROVAL: FEBRUARY 5, 2025



1.0



VIEW FROM MARKET STREET



VIEW FROM MARKET STREET AND LADD STREET INTERSECTION



VIEW FROM LADD STREET



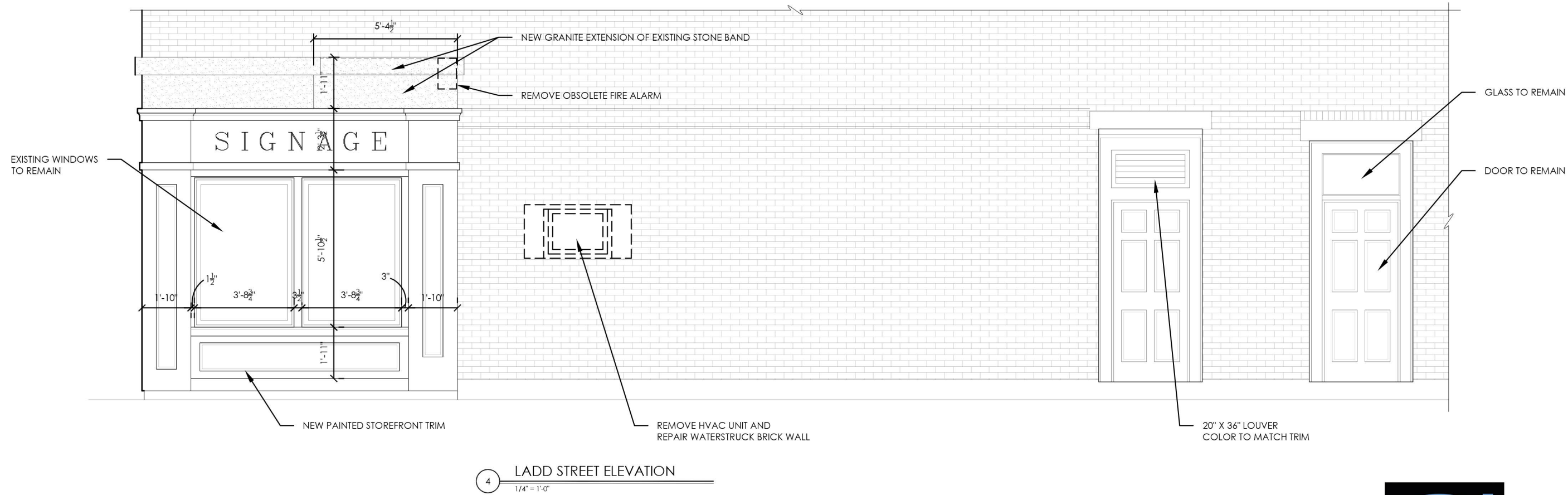
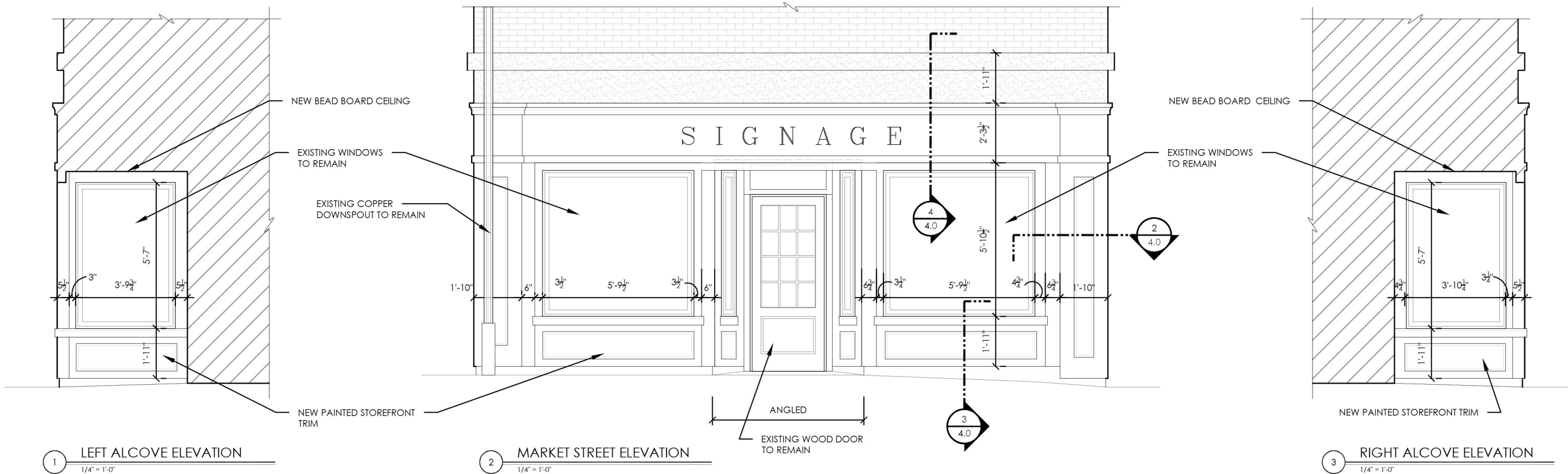
VIEW OF STOREFRONT



VIEW OF STOREFRONT FROM MARKET STREET



VIEW OF STOREFRONT



24 MARKET STREET
PORTSMOUTH, NEW HAMPSHIRE

PROPOSED ELEVATIONS
HDC APPLICATION FOR APPROVAL: FEBRUARY 5, 2025

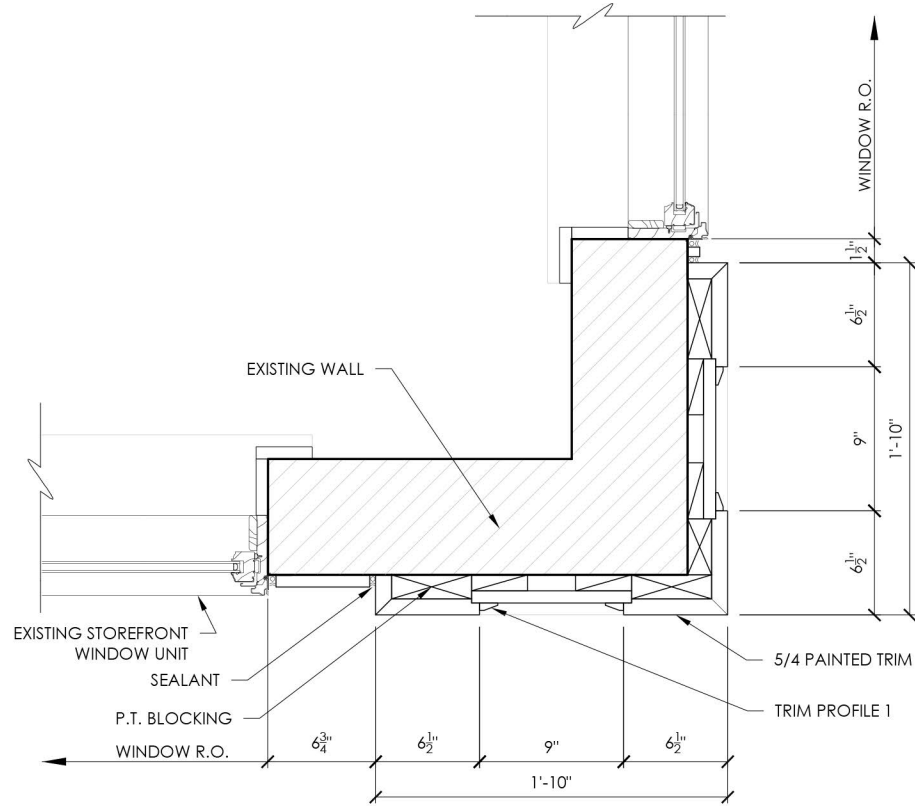


3.0

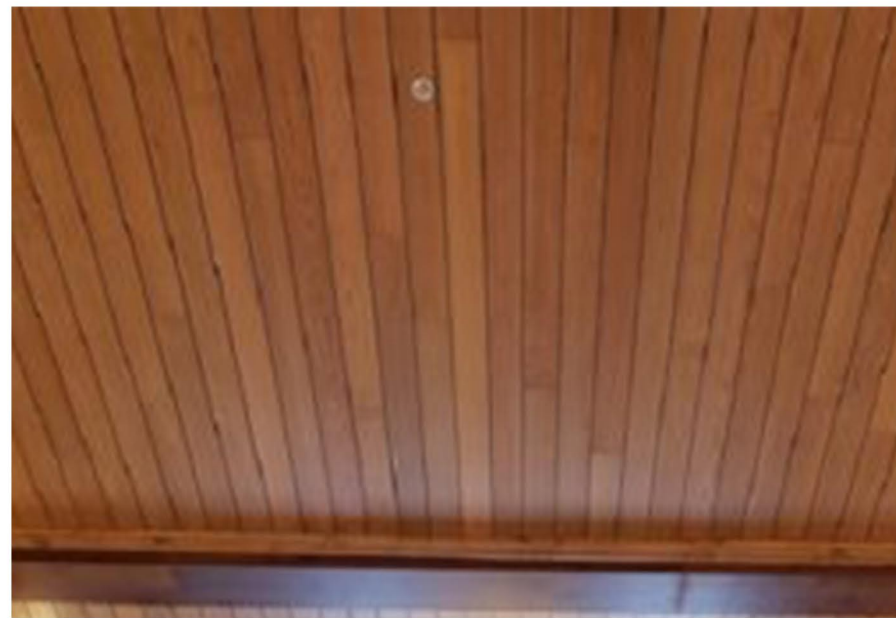


TRIM

SPECIES: SAPELE MAHOGANY
COLOR: PAINTED

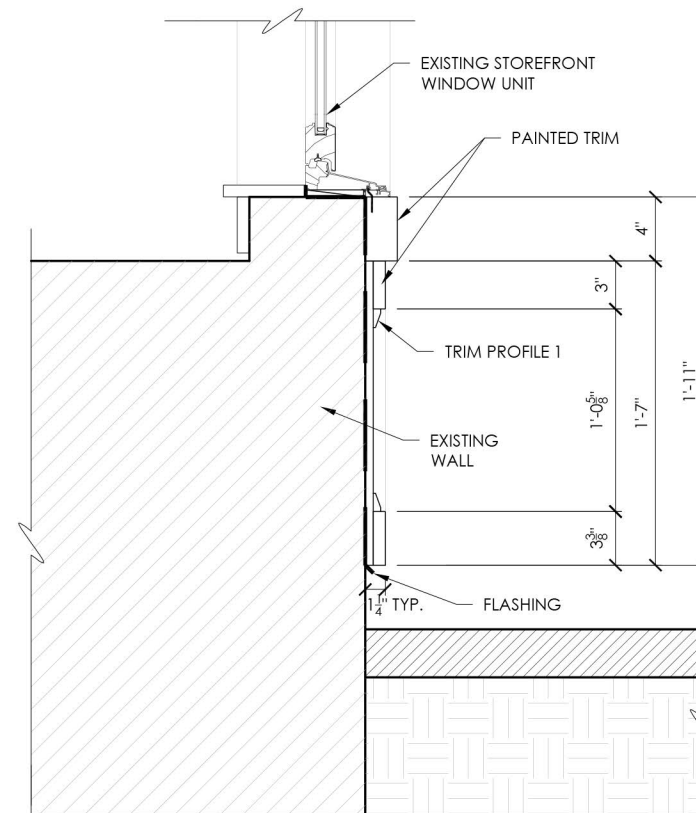


2 STOREFRONT CORNER DETAIL
 1" = 1'-0"

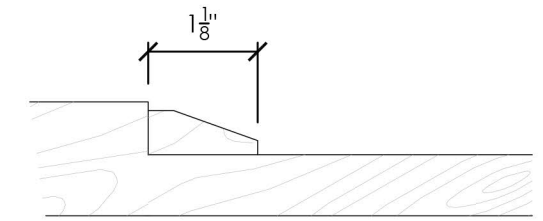


CEILING

SPECIES: SAPELE MAHOGANY
COLOR: PAINTED

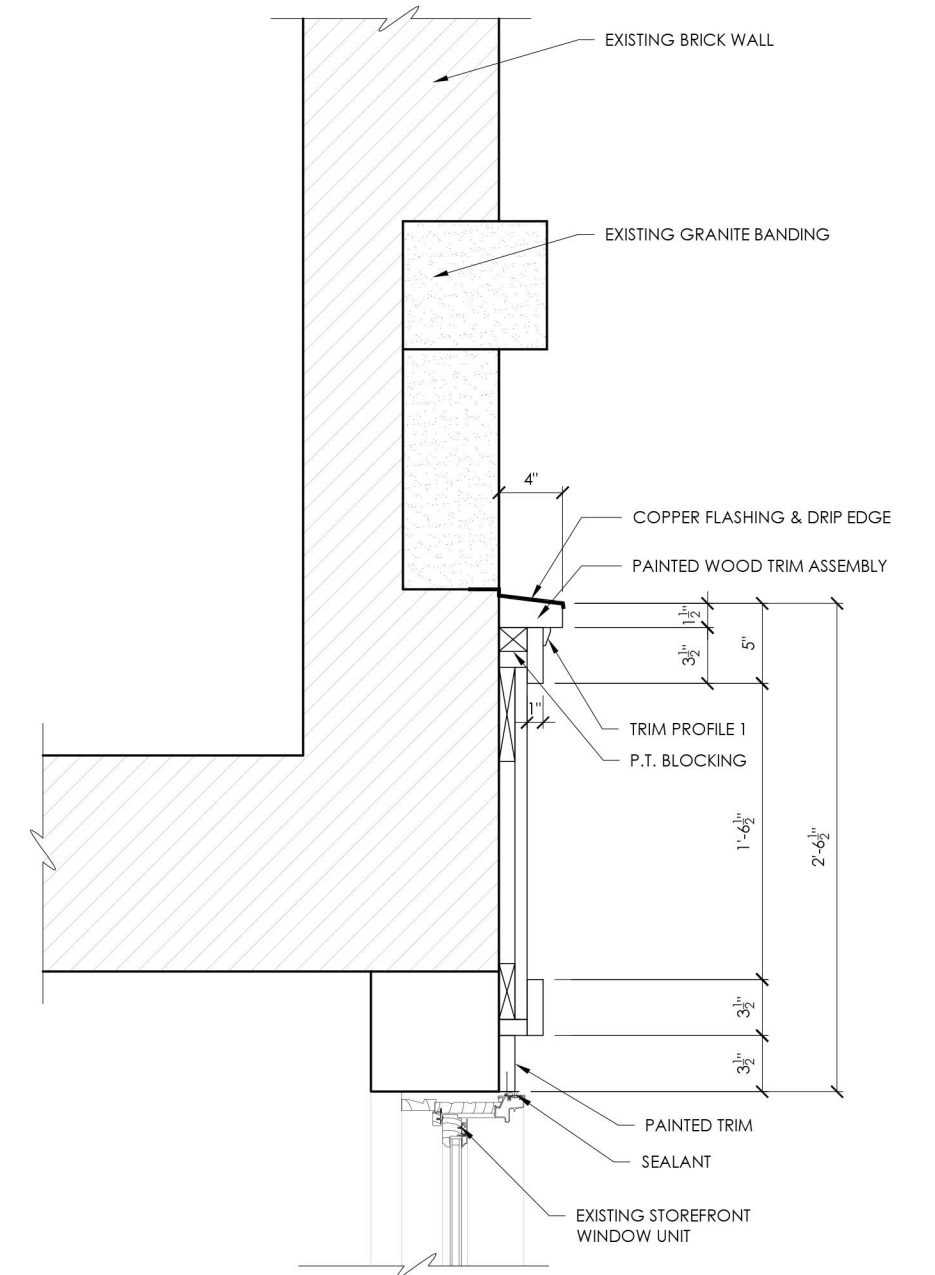


3 STOREFRONT SILL DETAIL
 1" = 1'-0"



TRIM PROFILE 1

1 TYPICAL TRIM PROFILE
 6" = 1'-0"



4 STOREFRONT HEAD DETAIL
 1" = 1'-0"

24 MARKET STREET
 PORTSMOUTH, NEW HAMPSHIRE

PROPOSED DETAILS

HDC APPLICATION FOR APPROVAL: FEBRUARY 5, 2025



4.0



24 MARKET STREET
PORTSMOUTH, NEW HAMPSHIRE

PROPOSED VIEW
HDC APPLICATION FOR APPROVAL: FEBRUARY 5, 2025



5.0



24 MARKET STREET
PORTSMOUTH, NEW HAMPSHIRE

PROPOSED VIEW
HDC APPLICATION FOR APPROVAL: FEBRUARY 5, 2025



5.1



24 MARKET STREET
PORTSMOUTH, NEW HAMPSHIRE

PROPOSED VIEW
HDC APPLICATION FOR APPROVAL: FEBRUARY 5, 2025



5.2