

Historic District Commission – Specifications Package

Scope of Work

Original Brick House

- Repoint exterior brick masonry on the North and West elevations
- Selective repointing of the South and East elevations
- Remove one exterior door and infill the opening with matching brick
- Remove one set of entry stairs
- Install a historically appropriate window in the upper portion of the infilled opening
- Install a new window on the first floor of the South elevation, aligned below the existing second-floor window
- Replace all existing windows with new units matching the current style and appearance
- Power wash and remove old paint from the mansard roof shingles

Existing Addition

- Replace two windows on the North elevation with windows matching those on the original house
- Relocate the existing door from the West side to the North side and replace with historically accurate door to match new windows.
- Install architecturally appropriate new stairs – Granite and brick.
- Install a new window (matching original house style) in the vacated door opening
- Reside the North and West elevations with cedar shingles
- Improve window and door trim to match the original building

The existing windows throughout the structure are non-original, recent replacements (circa 2015) with grilles between the glass (GBGs). These units do not reflect the architectural character or historic integrity of the circa 1850 Second Empire home. This proposal includes the replacement of these windows with MARVIN Ultimate Series aluminum-clad wood units featuring 2-over-2 Simulated Divided Lites (SDLs), restoring a historically appropriate appearance that complies with the Secretary of the Interior's Standards for Rehabilitation.

Note: The existing windows are modern, non-historic replacements with internal grilles. The proposed replacement units improve upon this by using exterior SDL muntins in a 2-over-2 configuration to more accurately reflect the building's historic character.

Historic District Commission – Specifications Package

1. Window Specifications

Manufacturer: Marvin Ultimate Series, Pella Architect Series, or equal.

Material: Wood interior, aluminum-clad exterior

Exterior Finish Color: Pella Hartford Green or equal

Operation Type: Double-hung (unless otherwise noted)

Muntin Configuration: Simulated Divided Lite (SDL), 6-over-6 pattern

Glass: Low-E, insulated glass units (IGUs) with spacer bar

Screens: Full screen, charcoal mesh, removable

Trim Compatibility: Historically accurate wood brickmould and sill detail

Dimensions: Match existing rough openings; see window schedule

Historic Considerations: Profiles match original sash dimensions with narrow muntins (<7/8") and traditional meeting rail alignment

Notes: Publicly visible windows will comply with the Secretary of the Interior's Standards for Rehabilitation

2. New Window in Existing Brick Wall

Manufacturer: Marvin Ultimate Series, Pella Architect Series, or equal.

Material: Wood interior, aluminum-clad exterior

Exterior Finish Color: Pella Hartford Green or equal

Type: Double-Hung, Double-hung 2-over-2

Muntin Configuration: Simulated Divided Lite (SDL), 6-over-6 pattern

Glass: Insulated Low-E clear with matching spacer bar

Trim: Exterior brickmould, projected sill, drip cap

New Opening Construction: Brick to be cut carefully, lintel to be concealed steel or brick soldier course

Brickwork: Tooth in to match historic brick, mortar to match in color and tooling

Historic Compatibility: Designed to match existing windows in configuration, size, and detailing

3. New Exterior Door Specification

Manufacturer: Brosco, Pella, or equivalent

Material: Solid wood (fir)

Style: 4-panel with upper glazed panels

Glazing: Insulated Low-E clear glass, optional 2-over-2 SDL

Size: 3'-0" x 7'-0" or as suited to façade symmetry

Hardware: Historic-style mortise lockset, oil-rubbed bronze

Threshold: Thermal-break aluminum

Trim: 5¼" flat casing with crown molding head detail

Finish: Stained

Historic Notes: Vertical proportions and detailing appropriate to mid-19th century brick homes

4. Trim and New Step Details

Steps:

- Material: Natural granite treads, brick risers
- Tread Depth: 12"
- Riser Height: 6½"
- Width: Door width + 6" each side
- Railings: Wrought iron, 36" height, traditional profile
- Footing: Frost-protected concrete

Window Trim:

- Casing: 3½" flat wood with ½" backband
- Head: Projected cap with drip edge
- Sill: Sloped wood with apron

Door Trim:

- Casing: 5¼" flat wood with ¾" backband
- Head: Crown molding and backband
- Transom: Optional, single-lite fixed glass above door

5. Cedar Shingle Siding for Existing Addition

Scope: Replace existing siding on the rear/side addition with cedar shingles to restore historically compatible materials and detailing.

Material: Western Red Cedar shingles, Grade A, kiln-dried

Exposure: 5" exposure typical, coursed level and evenly spaced

Finish: Painted or stained (final color TBD with HDC input)

Fasteners: Stainless steel ring-shank nails, hand-driven or pneumatic set to avoid splitting

Installation: Starter course double-layered, shingles offset for proper staggering

Trim: Corner boards and window/door trim to be retained or replaced in kind (wood, paint-grade)

Ventilation: Drainable weather-resistive barrier behind shingles, vented rain screen where applicable

Historic Considerations: Material and scale consistent with early-20th-century additions in

Portsmouth's historic district. Installation will respect original massing and detailing, improving compatibility with primary structure.

6. Architectural Context and Window Pattern Justification

Architectural Style: Second Empire (circa 1850)

Structure Type: Brick Carraige house with mansard roof

Historic Window Patterns:

Second Empire homes constructed between 1850–1875 commonly used tall, narrow windows with 2-over-2 or 1-over-1 sash patterns. These configurations reflect the advancements in industrial glass manufacturing, allowing for larger panes and reduced muntin patterns.

Justification for 2-over-2 Pattern:

The existing windows on the structure are primarily 2-over-2, which aligns with the home's period and architectural character. Retaining or replicating this pattern maintains consistency with the original fenestration and supports visual coherence, especially for street-facing elevations. The 2-over-2 pattern is also more appropriate than earlier 6-over-6 configurations typically found in Federal or Greek Revival homes.

7. Color Selection Note

Exterior color selection for all aluminum-clad wood windows and doors will be 'Hunter Green.'

This color is appropriate for the circa 1850 Second Empire brick home.

It provides a historically compatible finish and preferred over Dark Bronze or Deep Olive for this project.

8. Brand Consistency Note

All windows and exterior doors for this project will be sourced from Marvin Ultimate Architect Series line (or equal) to ensure consistent profiles, finishes, and materials throughout the renovation. This ensures historical compatibility, simplifies coordination, and maintains a uniform appearance for the Historic District Commission's review.



526 State Street, Portsmouth, NH 03801

Date of photo: 09 Jun 2025



526 State Street, Portsmouth, NH 03801

Date of photo: 09 Jun 2025



526 State Street, Portsmouth, NH 03801

Date of photo: 09 Jun 2025



526 State Street, Portsmouth, NH 03801

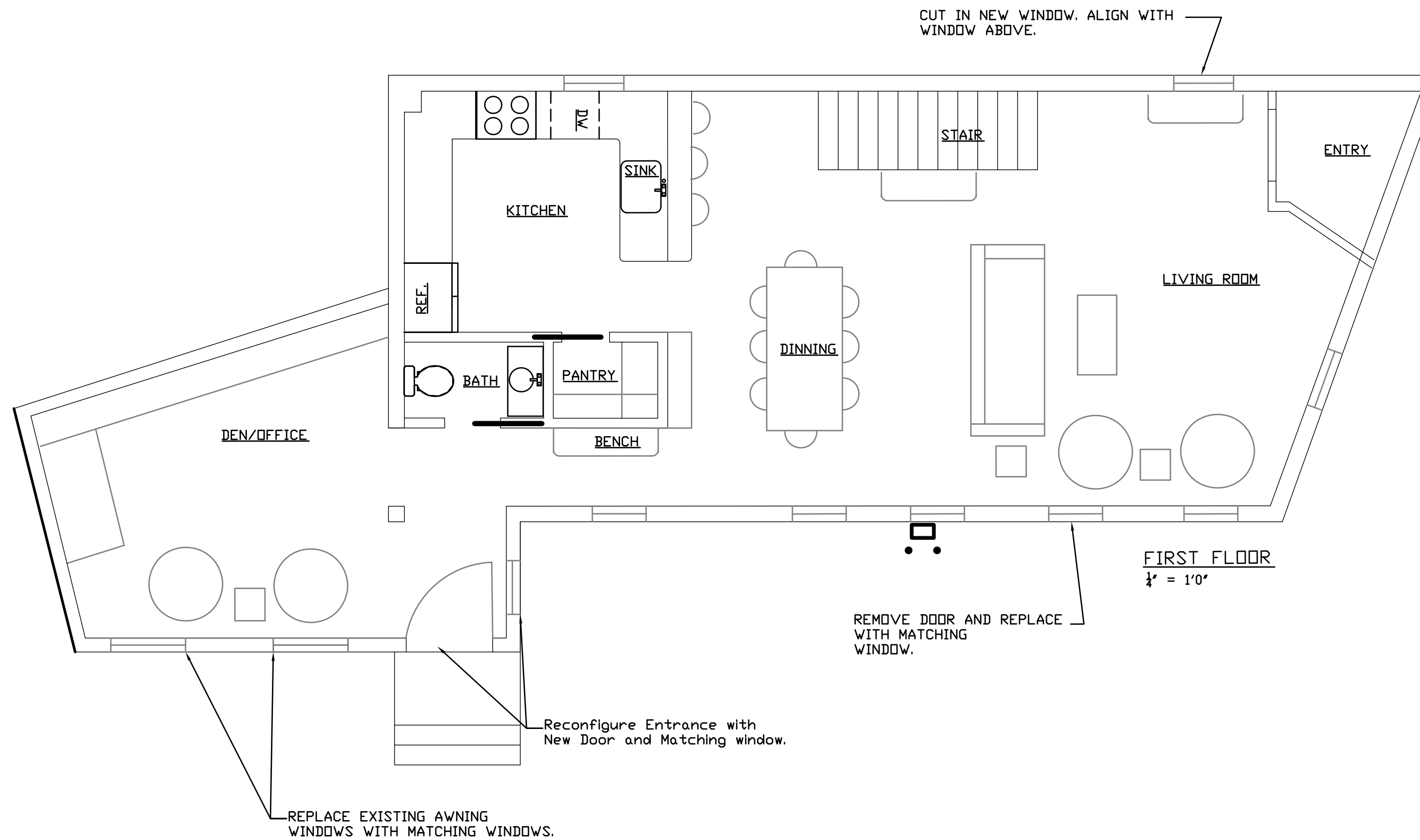
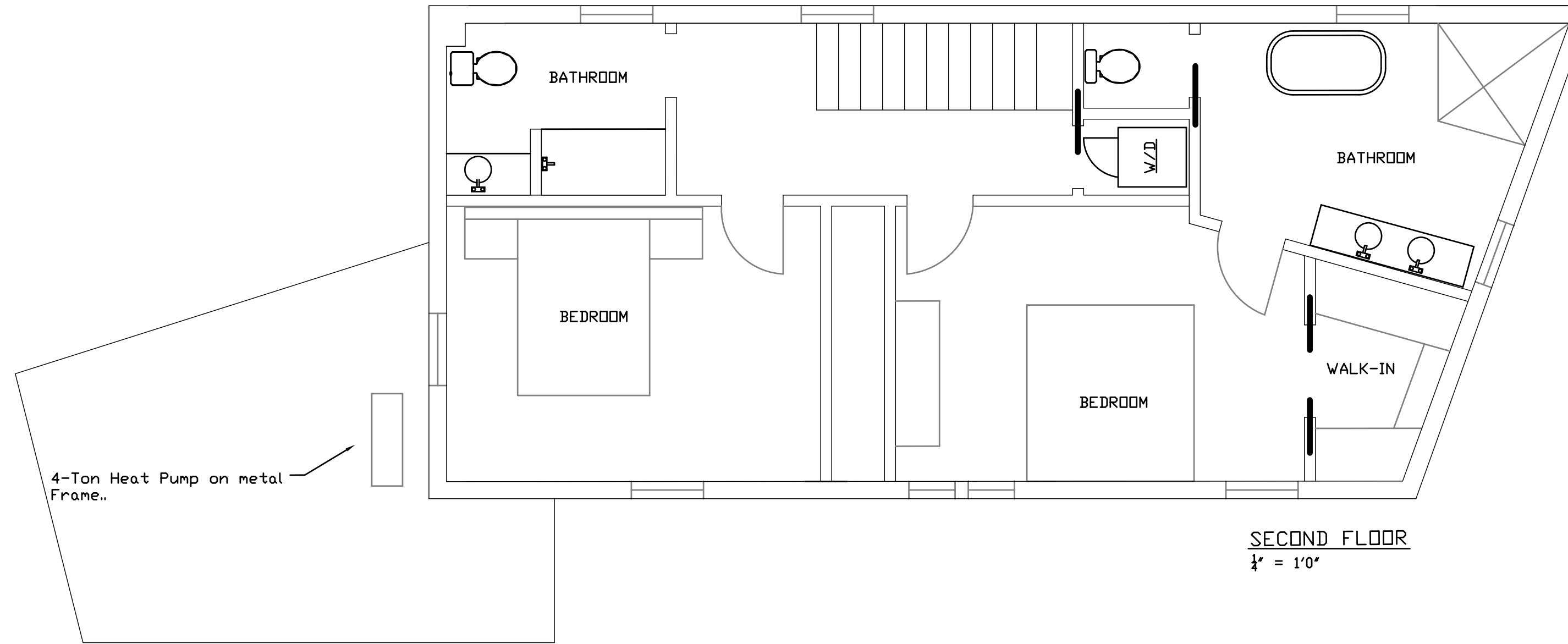
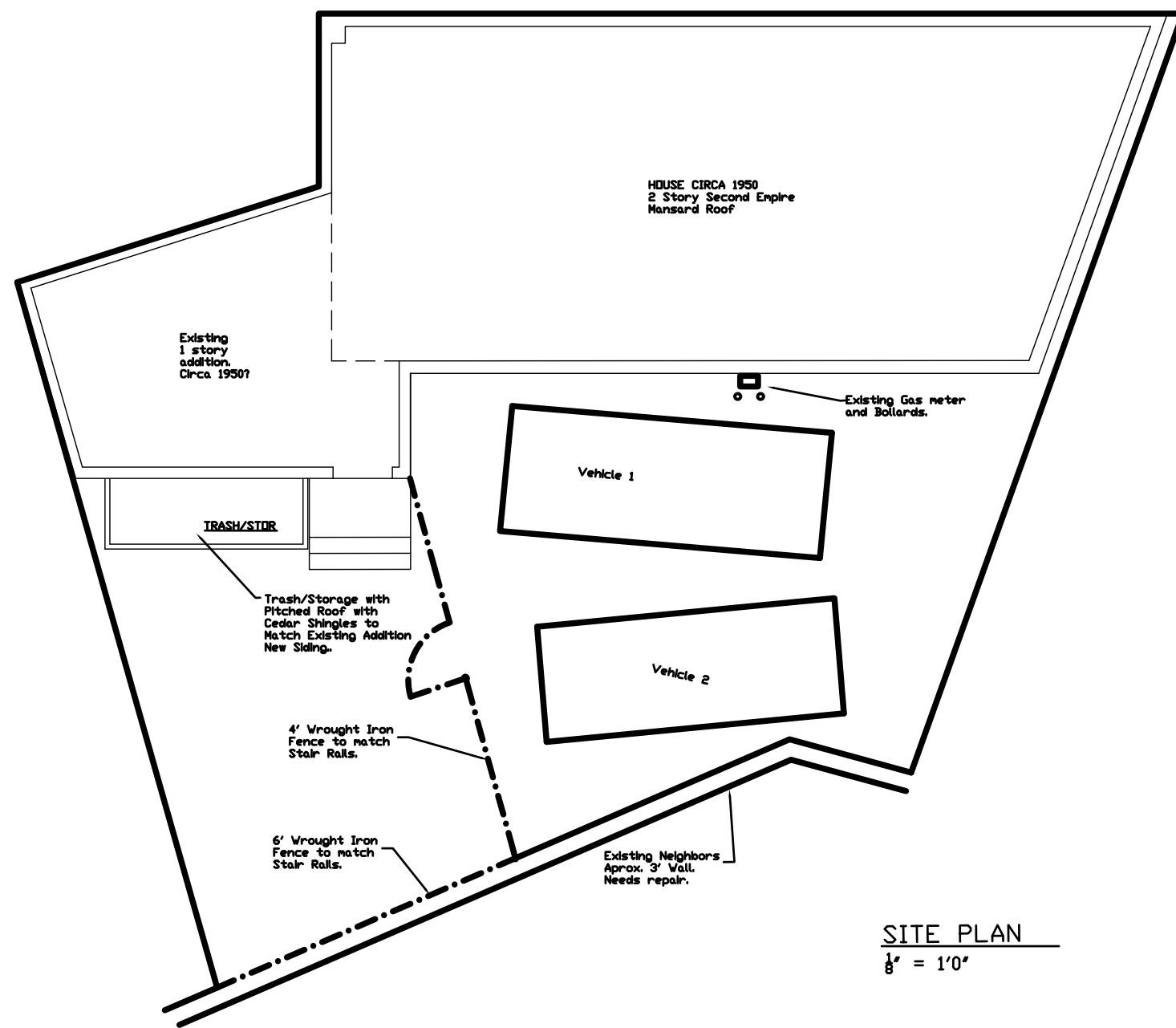
Date of photo: 09 Jun 2025



526 State Street, Portsmouth, NH 03801
Date of photo: 09 Jun 2025



526 State Street, Portsmouth, NH 03801
Date of photo: 09 Jun 2025



CONSULTANTS

FITZMEYER RESIDENCE
530 State Street, Portsmouth, NH

| MARK | DATE | DESCRIPTION |
|------|------|-------------|
|------|------|-------------|

PROJECT NO:

CAD DWG FILE:

DRAWN BY:

CHK'D BY:

COPYRIGHT:

SHEET TITLE

PROPOSED PLANS -
PRELIMINARY

SHEET 1 OF 2

IN STOCK EXTERIOR WOOD DOORS



Quality... Selection... Craftsmanship

Saving

FIR DOORS & SIDELIGHTS



F-7134U
4-Light
2'-8", 3'-0" x 6'-8"



F-7132U
2-Light
2'-8", 3'-0" x 6'-8"



F-7282U
2-Panel
3'-0" x 6'-8"



F-7344U
4-Panel
2'-8", 3'-0" x 6'-8"
3'-0" x 7'-0"



F-7130U
6-Panel
2'-8", 3'-0" x 6'-8"
3'-0" x 7'-0"

3/4" Low-E Argon Insulating Glass



F-37703U
3-Light
0'-10", 1'-0",
1'-2" x 6'-8"
1'-0", 1'-2" x 7'-0"



F-37802U
2-Light
1'-0", 1'-2" x 6'-8"



F-37803U
3-Light
1'-0", 1'-2" x 6'-8"



F-37804U
4-Light
1'-0", 1'-2" x 6'-8"



F-37705U
5-Light
1'-0", 1'-2" x 6'-8"
1'-0", 1'-2" x 7'-0"



F-37703U
3-Light
0'-10", 1'-0",
1'-2" x 6'-8"
1'-0", 1'-2" x 7'-0"



F-7701U
1-Light
1'-0", 1'-2" x 6'-8"
1'-0", 1'-2" x 7'-0"



F-7702U
1-Light
0'-10", 1'-0",
1'-2" x 6'-8"

Insulating Glass

FIR DUTCH DOORS

Nothing says Americana like a Dutch door. With this style, a single door is divided in the middle, allowing homeowners to open the top portion while keeping the bottom portion closed.



F-72011
8-Light
2'-6", 2'-8", 3'-0" x 6'-8"



F-72013
8-Light
2'-8", 3'-0" x 6'-8"



F-74011
6-Panel
3'-0" x 6'-8"



F-74013
4-Panel Crossbuck
3'-0" x 6'-8"



UltraBlock technology adds a water-resistant composite block in the bottom of the door stiles, where water infiltration can occur in a tough exposure. Simpson's exclusive Weather Seal™ process provides additional protection against moisture penetrating the bottom rail.

brosco.com

11
Savir

ROUGH OPENINGS & UNIT DIMENSIONS



INSWING DOOR SYSTEM - STANDARD ALUMINUM SILL

- Oak & Mahogany Sill: ADD 1/2" to Height of all dimensions
- Public Access Aluminum Sill: Deduct 1" from Height of all dimensions

| SIZE | ROUGH OPENING | UNIT DIMENSION NO CASING | UNIT DIMENSION W/ BRICKMOULD | UNIT DIMENSION W/ 1-1/16" x 3-1/2" FLAT CASING |
|---------------|-------------------|-----------------------------|---------------------------------|--|
| 2'-6" x 6'-8" | 32-1/2" x 82-1/2" | 31-3/8" x 81-3/4" | 34" x 83" | 37" x 84-1/2" |
| 2'-8" x 6'-8" | 34-1/2" x 82-1/2" | 33-3/8" x 81-3/4" | 36" x 83" | 39" x 84-1/2" |
| 3'-0" x 6'-8" | 38-1/2" x 82-1/2" | 37-3/8" x 81-3/4" | 40" x 83" | 43" x 84-1/2" |
| 5'-0" x 6'-8" | 63" x 82-1/2" | 61-7/8" x 81-3/4" | 64-1/2" x 83" | 67-1/2" x 84-1/2" |
| 5'-4" x 6'-8" | 67" x 82-1/2" | 65-7/8" x 81-3/4" | 68-1/2" x 83" | 71-1/2" x 84-1/2" |
| 6'-0" x 6'-8" | 75" x 82-1/2" | 73-7/8" x 81-3/4" | 76-1/2" x 83" | 79-1/2" x 84-1/2" |

For 8'-0" Height Units - add 16" to all height dimensions shown.

BASIC SET-UP UNIT



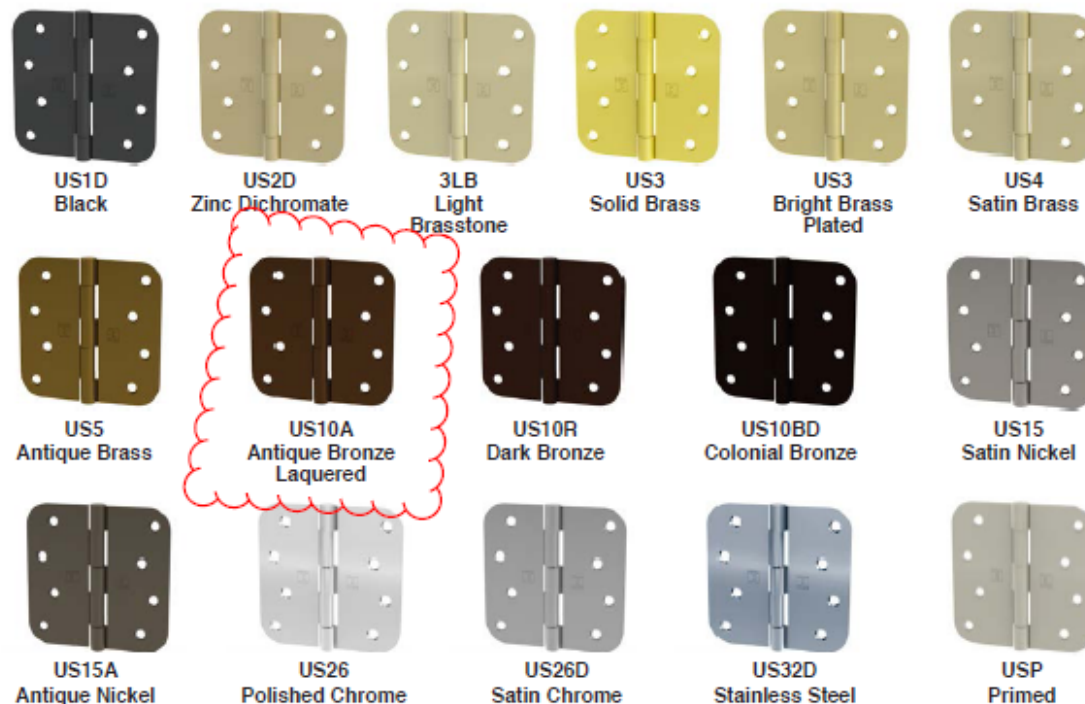
STANDARD DOOR UNIT FEATURES

- 4⁹/₁₆" Prime Wood Frame - Inswing
- Limited-Lifetime Warranty
- Brickmould Exterior Casing - Primed
- Compression Type Weatherstripping and Corner Seals
- Bulb and Fin Door Bottom
- Aluminum Sill (mill finish) - with Thermal Break, Hardwood Adjustable
- 4" x 4" Zinc Dichromate Hinges (dull brass color)
- Single Bore 2³/₈" Backset (2¹/₈" Facebore)
- Double Door Units - White Aluminum Ultimate Astragal included (w Flush Bolts)

HINGE OPTIONS



Hinges are available in Plain Bearing, Ball Bearing and Spring; Radius and Square.



| | | BROSCO | | | | | BALDWIN | | EMTEK | |
|--------------------------|--------|----------|--------|--------------|--------|--------------|----------|--------------|----------|--------------|
| | | Standard | | Ball Bearing | | Spring Hinge | Standard | Ball Bearing | Standard | Ball Bearing |
| | | Radius | Square | Radius | Square | Radius | Square | Square | Square | Square |
| HINGE OPTIONS: | | | | | | | | | | |
| Antique Bronze Lacquered | US10A | ✓ | — | — | ✓ | — | — | — | — | — |
| Antique Brass | US5 | ✓ | ✓ | ✓ | ✓ | ✓ | ✓ | ✓ | — | — |
| Antique Nickel | US15A | ✓ | ✓ | ✓ | ✓ | ✓ | — | — | — | — |
| Black (Flat Black) | US1D | ✓ | ✓ | ✓ | — | ✓ | — | — | — | — |
| Flat Black | US19 | — | — | — | ✓ | — | — | — | ✓ | ✓ |
| Bright Brass | US3 | ✓ | ✓ | ✓ | ✓ | ✓ | — | — | ✓ | ✓ |
| Colonial Bronze | US10BD | ✓ | ✓ | ✓ | — | — | — | — | — | — |
| Dark Bronze | US10R | ✓ | ✓ | ✓ | ✓ | ✓ | — | — | — | — |
| French Antique | US7 | — | — | — | — | — | — | — | ✓ | — |
| Life Solid Brass | | — | — | — | — | — | ✓ | ✓ | — | — |
| Light Brass | 3LB | ✓ | ✓ | — | — | — | — | — | — | — |
| Oil Rubbed Bronze | US10B | — | — | — | — | — | ✓ | ✓ | ✓ | ✓ |
| Polished Chrome | US26 | ✓ | ✓ | ✓ | ✓ | ✓ | ✓ | ✓ | ✓ | ✓ |
| Polished Nickel | | — | — | — | — | — | — | — | ✓ | ✓ |
| Primed | USP | ✓ | — | — | — | — | — | — | — | — |
| Satin Brass | US4 | ✓ | — | — | ✓ | — | — | — | — | — |
| Satin Chrome | US26D | ✓ | ✓ | ✓ | ✓ | ✓ | — | — | — | — |
| Satin Nickel | US15 | ✓ | ✓ | ✓ | ✓ | ✓ | ✓ | ✓ | ✓ | ✓ |
| Solid Brass | A-US3 | ✓ | — | — | — | — | — | — | — | — |
| Stainless Steel | US32D | ✓ | — | — | — | ✓ | — | — | — | — |
| Zinc Dichromate | US2D | ✓ | — | ✓ | ✓ | ✓ | — | — | — | — |

Any hinge can be converted to "Non-Removable Pin".

Variances in photography and printing may cause the finish colors shown to vary from the actual finishes.

HARDWARE OPTIONS

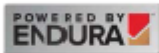


Multi-Point Locking Systems –

Trilennium® 3070



- Multi-Point Lock features narrow 7/8" profile for "proud edge" door panels (Single and French active panels). Available in Stainless Steel and Victorian Bronze.
- Eclipse Door Handle - Victorian Bronze, Satin Nickel, Black & Brass



Pano-Lock™



- Works with Universal off the shelf hardware
- Compatible with any hardware style
- One key operates three locking bolts – triple security
- Bronze or Brushed Clear Anodized
- Affordably priced



Herz der Sicherheit

- Add extra security and strength to your door with a Hoppe® Multi-point Lock System
- Polished Brass, Rustic Umber, Satin Nickel



Full Length Mortised Lock Mechanism



München 3955



München 3955



Verona 3955



Verona 3965



Finials –

Add a distinctive and elegant touch to your door hinges. Choose from a wide variety of finishes.

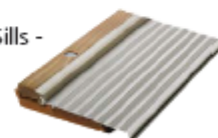
Hardware –

- Door Viewer - Bright Brass, Satin Nickel, Dark Bronze, Satin Chrome
- Mailslot - Bright Brass, Satin Nickel, Aged Bronze, Satin Chrome, Stainless Steel
- Brass Kickplate



Sills –

- Brass, **Bronze** and Satin Nickel Aluminum
- Oak, White Oak and Mahogany
- Composite Aluminum Sills - Bronze, Mill
- WeatherOut Flashing



Ultimate Flip Astragal –

- White and Fir



ULTIMATE

MARVIN SIGNATURE® COLLECTION



THE MARVIN PORTFOLIO

The Marvin portfolio consists of five product lines organized into three distinct collections defined by the degree of design detail and customization opportunities.

Marvin windows and doors offer exceptional performance, energy efficiency, low maintenance, and quality you can see, feel, and touch to help bring your vision to life.



ULTIMATE

Most extensive selection of features, options, and product types



MODERN

Design flexibility in a purely modern aesthetic available exclusively at Marvin Modern dealers



COASTLINE

Custom windows and doors for high velocity hurricane zones in the coastal Southeast



ELEVATE

Wide range of options and product types



ESSENTIAL

Curated options and product types

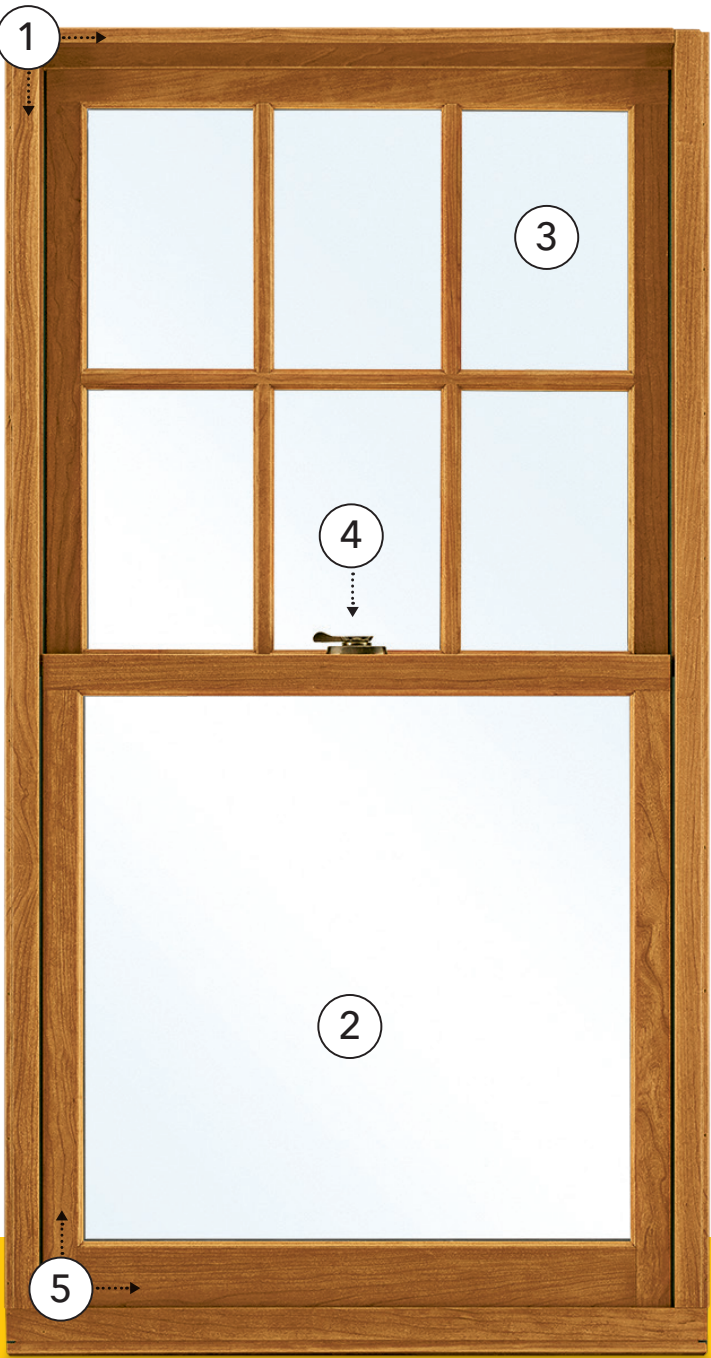
MARVIN SIGNATURE® COLLECTION

MARVIN ELEVATE® COLLECTION

MARVIN ESSENTIAL™ COLLECTION

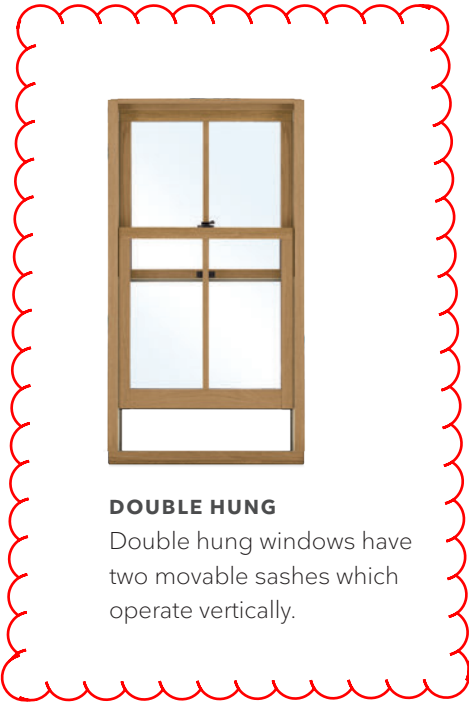
| | | | | | |
|-------------------------|---|---|--|---|---|
| INTERIORS | WOOD 6 species options + custom 2 painted or primed options 6 stains + clear coat | EXTRUDED ALUMINUM 5 color options | EXTRUDED ALUMINUM 6 solid colors, 4 woodgrain finishes | WOOD Bare pine, painted Designer Black, painted White, or clear coat | FIBERGLASS 3 color options |
| EXTERIORS | EXTRUDED ALUMINUM 19 colors + custom OR WOOD 3 species + custom | FIBERGLASS 5 color options | EXTRUDED ALUMINUM 6 solid colors, 4 woodgrain finishes | FIBERGLASS 5 color options | FIBERGLASS 5 color options |
| SIZING | Standard + custom sizing for replacement, remodeling, or new construction | Custom sizing for remodeling or new construction | Custom sizing for replacement, remodeling, or new construction | Standard + custom sizing for replacement, remodeling, or new construction | Standard + custom sizing for replacement, remodeling, or new construction |
| HARDWARE | Extensive selection including Marvin Gallery Hardware | Minimalist hardware for modern design aesthetic | Available in multiple styles, sizes, and finishes to complement the window + door aesthetics | Available in 6 finish options with 2 door handle styles | Available in 6 finish options with 1 door handle style |
| COASTAL + WATERFRONT | Hurricane Impact Zones 3 and 4, + PG 50 Products | | All products rated for High Velocity Hurricane Zone (IZ4) | Hurricane Impact Zone 3, + PG 50 Products | |

WINDOW TERMS + DEFINITIONS



- 1. FRAME**
There are three components to the frame: the header across the top, the jambs down each side, and the sill across the bottom. Marvin frames are built strong with a variety of high-quality wood species.
- 2. GLAZING**
The glass in a window is called glazing. Marvin's broad range of glazing options can meet both high-performance and refined aesthetic requirements.
- 3. LITE**
Each area of glass is called a lite. Marvin offers divided lite patterns for whatever look you wish to create.
- 4. HARDWARE**
Marvin uses only the highest quality locks, handles, lifts, pulls, and hinges in a wide variety of durable finishes.
- 5. SASH**
The sash—operating or stationary—is comprised of horizontal rails, vertical stiles, and glazing. Marvin's large solid sash offer precise fit and ease of operation.

WINDOW OPERATING STYLES



DOUBLE HUNG
Double hung windows have two movable sashes which operate vertically.



CASEMENT
A window that is hinged to its frame at the side and opens like a door.



FIXED OR PICTURE
An inoperable window with direct glaze or in-sash configurations. Available in a wide range of polygon and radius shapes.



IN-SASH PICTURE

- Fixed window designed to match the profiles of operable windows like casement, awning, or double hung
- Available in large sizes up to 8' wide x 8' high



AWNING
An awning is hinged to the frame at the top and opens outward. If hinged on the bottom, it's called a hopper.



GLIDER
A window with a sash that slides horizontally to open and close.



DIRECT GLAZE PICTURE

- Fixed window with no sash—the glass is glazed directly into the frame
- Available in stunningly large sizes with widths or heights up to 12'

MORE FLEXIBILITY TO MEET ANY DESIGN CHALLENGE.

Marvin has an extensive selection of styles, sizes, shapes, and options.

ULTIMATE DOUBLE HUNG G2



ULTIMATE DOUBLE HUNG G2 WINDOW IN DESIGNER BLACK



Photo: Laurey W. Glenn

ULTIMATE DOUBLE HUNG G2 WINDOW IN WHITE WITH OIL RUBBED BRONZE HARDWARE

ULTIMATE DOUBLE HUNG G2

The Ultimate Double Hung G2 window is an embodiment of our dedication to the craft of creating windows and doors. Influenced by the rich, historical significance of this window style and inspired by innovative design, each feature is thoughtfully added and every detail is carefully considered. This is all in service of shaping a window that deserves to be in the unique homes our customers desire.



INTERIOR



EXTERIOR



UNIQUE WASH MODE ALLOWS CLEANING OF BOTH SIDES OF GLASS FROM INDOORS

ULTIMATE DOUBLE HUNG G2

Engineered for performance and designed to inspire, each aspect of the Ultimate Double Hung G2 window was made with purpose. Our engineers consider every detail from the most innovative features to the most minute subtleties, all because the windows in your home help illuminate the most important parts of your life.

INTERIOR FEATURES AND PERFORMANCE

RICH WOOD INTERIOR
Offers beauty and warmth with six wood species and ten interior finish options.

NARROW CHECKRAIL
Provides a sleek aesthetic at 1 15⁄16 inches to maximize daylight opening while maintaining historical accuracy.

TILT WASH MODE
Allows easy access to exterior glass for cleaning and maintenance.



EXCLUSIVE AUTOLOCK
Activates when the sashes are closed, locking the window.

ENERGY EFFICIENCY
Multiple glass options for meeting ENERGY STAR® standards in energy efficiency for various regions and climates.

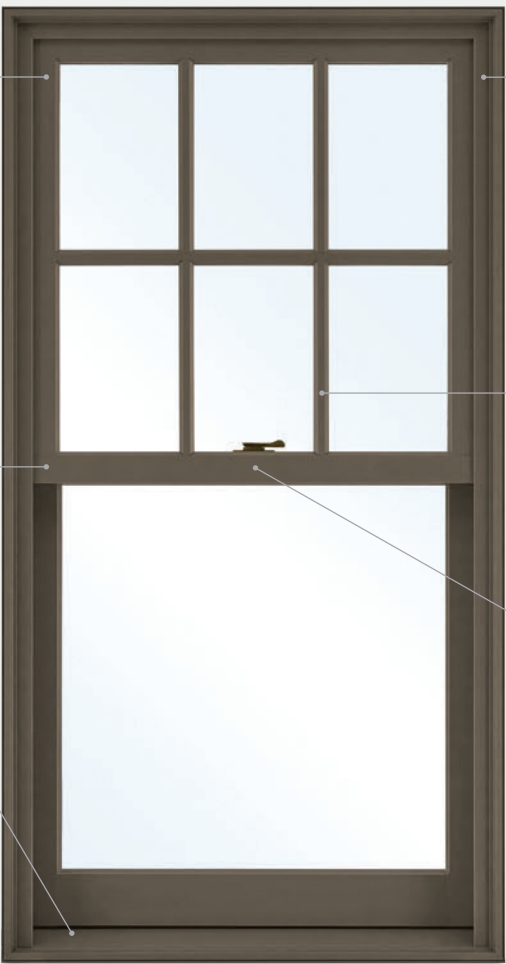
SASH BALANCE SYSTEMS
Enables smooth operation at the largest sizes.

EXTERIOR FEATURES AND PERFORMANCE

DURABLE CLADDING
Extruded aluminum exterior cladding with an AAMA verified 2605 finish and backed by a 20-year warranty against chalking and fading.

EXPANSIVE SIZES
Larger than 5 feet wide by 10 feet high.

TRADITIONAL SILL BEVEL
The 14-degree bevel provides optimal water management while maintaining a classic look.



SUPERIOR WEATHER PERFORMANCE
LC-PG50 on most sizes. Optional commercial (CW) performance and IZ3 certified coastal performance on most sizes.

DESIGN VERSATILITY
An array of simulated divided lite patterns, interior and exterior color options, ten hardware finishes, and archtop models.

ALUMINUM INTER-LOCK
Eliminates drafts and improves the window's overall structural integrity.

INTERIOR FINISH OPTIONS

PINE

VERTICAL GRAIN
DOUGLAS FIR

MIXED GRAIN
DOUGLAS FIR

CHERRY

WHITE OAK

HONDURAN MAHOGANY

WOOD SPECIES

Offering a rich, warm look, many custom options, and design versatility, wood is a premium choice. Wood can be used on both the interior and exterior of our Ultimate windows and doors and provides great insulation. Treatments such as stain and paint work well when applied. Marvin sources the best, highest quality raw wood and uses refined techniques to process it.



STAIN + PAINT

Compared to painting or staining on the job site, our factory finishes provide consistent quality and performance. Our extensive knowledge about wood as a material and how it handles stains and paints, and the many years we've spent perfecting our finishing process, ensures your windows and doors arrive ready to install.

CLEAR

WHEAT

HONEY

HAZELNUT

LEATHER

CABERNET

ESPRESSO

Stain colors shown on Pine. To see more about finishes visit [Marvin.com](https://www.marvin.com).

DESIGNER BLACK

WHITE

PRIMED WHITE

EXTERIOR FINISH OPTIONS

| |
|------------------------------|
| STONE WHITE |
| COCONUT CREAM |
| SIERRA WHITE |
| CASHMERE |
| PEBBLE GRAY |
| HAMPTON SAGE |
| CADET GRAY |
| CLAY |
| CASCADE BLUE |
| SUEDE |
| GUNMETAL |
| WINEBERRY |
| BRONZE |
| BAHAMA BROWN |
| EVERGREEN |
| EBONY |
| BRIGHT SILVER (PEARLESCENT) |
| COPPER (PEARLESCENT) |
| LIBERTY BRONZE (PEARLESCENT) |

CUSTOM COLOR: ANY COLOR YOU WANT

EXTRUDED ALUMINUM

Extruded aluminum is an extremely tough cladding that protects wood windows, mimics the profiles of wood, and provides superior durability. It is the most commonly ordered exterior material for our Ultimate products.

Select from our palette of 19 durable extruded aluminum colors, including a spectrum of rich hues and three pearlescent finishes. If you have more specialized needs, we can also work with you to create a custom color.

WOOD

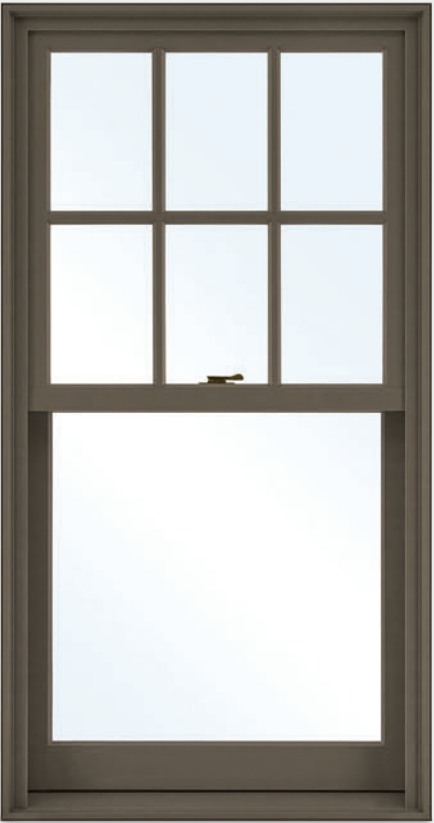
Wood is a premium material for windows and doors, offering classic aesthetic appeal, many options for customization, and design versatility.

We treat exposed millwork with a water repellent wood preservative to help it last longer. Choose from one of the four options below. Each is ready to be finished to match your project's exacting requirements.

| |
|----------------------------|
| PINE |
| VERTICAL GRAIN DOUGLAS FIR |
| MAHOGANY |
| WESTERN RED CEDAR |
| Exterior trim package only |



Double Hung G2 window in Ebony



Double Hung G2 window in Suede

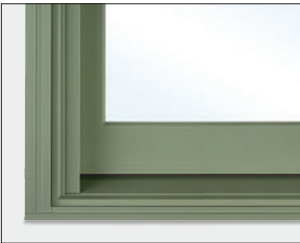
EXTERIOR CASINGS + SUBSILLS



BRICK MOULD CASING AND SPECIAL SUBSILL WITH CUSTOM MULL COVER IN HAMPTON SAGE

EXTERIOR CASINGS + SUBSILLS

Adding Marvin extruded aluminum or wood casings and subsills to your windows and doors provides great architectural detail to any home. Ultra-durable extruded aluminum casings feature a beautiful factory-applied finish that resists chalking, fading, pitting, corrosion, and marring. Casing profiles are consistent around the sides and top of a window or door, except for the Potter casing profile, which has a taller head. Custom casings and subsills are also available.



BRICK MOULD CASING
WITH A246 SUBSILL



FLAT CASING
WITH A246 SUBSILL



COLUMBUS CASING
WITH A1450 SUBSILL



RIDGELAND CASING
WITH A1453 SUBSILL



GRAYSON CASING
WITH A1451 SUBSILL



THORTON CASING
WITH A1450 SUBSILL



STRATTON CASING
WITH A1453 SUBSILL



POTTER CASING
WITH A217 SUBSILL



Grayson Casing in Bronze



Potter Casing with A1451 Subsill in Cascade Blue

DIVIDED LITES



DIVIDED LITES

Simulated divided lites, available in a number of different styles, mimic the look of individual panes of glass with the energy efficiency of dual pane insulated glass.

Our custom capabilities allow us to create almost any divided lite pattern to match your design style.



SIMULATED DIVIDED LITE (SDL)
SDL bars are permanently adhered to both sides of the glass. Simulated Divided Lites with Spacer Bars (SDLs) are an energy-efficient way to create the look of authentic divided lites.



AUTHENTIC DIVIDED LITE (ADL)
Separate panes of glass are glazed between muntin bars for historical accuracy. Available exclusively with wood exterior units.



GRILLES-BETWEEN-THE-GLASS (GBG)
Grilles are permanently installed between the glass panes. This low-maintenance grille offers the look of a divided lite pattern with the ease of cleaning just one pane of glass. Available with different interior and exterior colors.

OGEE DIVIDED LITE WIDTHS



SQUARE DIVIDED LITE WIDTHS



GLASS + GLAZING



ULTIMATE AWNING AND PICTURE WINDOWS AND INSWING FRENCH DOOR IN PEBBLE GRAY

GLAZING PROFILES

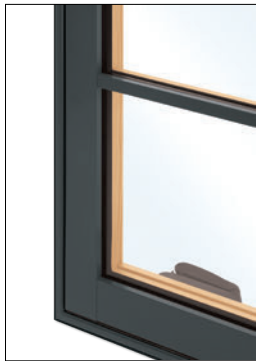
Interior and exterior glazing profiles are available in Ogee and Square. Choose Ogee for more traditional projects, and Square for a clean, contemporary look. Interior and exterior glazing profile options vary by product type.



OGEE



SQUARE



SQUARE EXTERIOR GLAZING PROFILE



DUAL PANE GLAZING

Our standard glazing is dual pane: two panes of glass with Low E coatings and insulated with argon gas. Compared to a single glass pane, dual pane glass cuts energy costs significantly because of low emissivity coating and the gas-filled insulating space between the glass layers.



TRIPLE PANE GLAZING

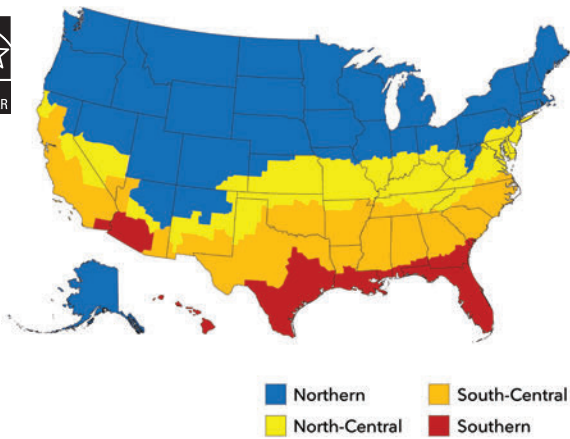
Triple pane glazing consists of three panes of glass with Low E coatings applied to the surface. Two glass spaces are insulated with argon gas between the panes. Available in products where glazing thickness can be greater than ¾ inch.

GLASS + GLAZING

The thermal and structural properties of wood combined with the right glazing make Marvin wood and extruded aluminum clad products an optimal choice for energy efficiency. We offer thousands of window and door options with two or three panes of glass and a range of glazing options to meet the performance challenges of any climate.

GLASS COATINGS

Low E coatings are microscopically thin, essentially invisible coatings on the glass surface that help manage the amount of light and heat conducted through a window pane or reflected away from it, reducing a home's dependence on heat and air conditioning. The national ENERGY STAR® program recognizes products that meet strict energy-efficiency guidelines to suit climates in different areas of the country, and Marvin offers products to meet climate and code requirements in every region.



LOW E1

Low E1 coating is a good choice when you want maximum solar heat gain and radiant heating properties. This type of coating is generally used in Northern climates where heating is prioritized over cooling. You'll reap maximum benefits when windows with this type of coating are positioned to receive direct sun exposure.

LOW E2

The most common Low E coating since it works well across most geographic regions and climates. Low E2 with two metallic coatings balances less solar heat gain and improved radiant heating properties.

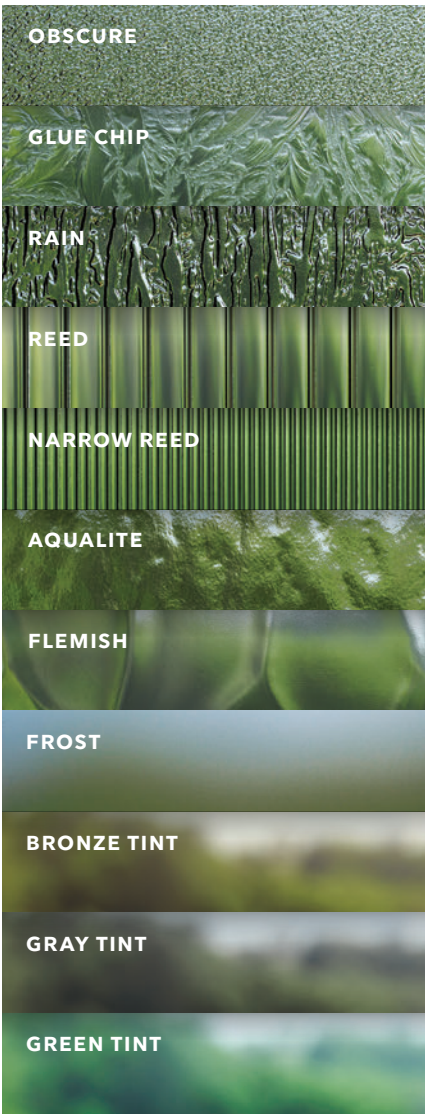
LOW E3

Used in applications where solar heat gain may be a concern, low E3 coating uses multiple metallic layers for radiant properties similar to Low E2. This type of coating is most commonly used in Southern, sunny climates where cooling is prioritized over heating.

SPECIALTY GLASS

Our specialty options include glass for unique project needs like sound abatement (STC/OITC), high altitudes, Sea Turtle Conservation Codes, and California fire zones. We also offer laminated glass on certain products that are designed specifically for hurricane zones.

A variety of decorative glass options, including those shown below and others, are available to meet the unique needs of each project. Laminated glass is also available in clear, bronze, gray, or green with tinted interlayers.



SCREENS



ULTIMATE DOUBLE HUNG INSERT G2 WINDOW IN STONE WHITE WITH FULL SCREENS

SCREENS

Choose from an aluminum surround in three finishes or a wood interior surround that complements warm wood interiors. Marvin screens come standard with Marvin Bright View™ – a fiberglass screen mesh that provides improved airflow and more natural light while keeping insects out. Bright View repels water and resists dirt and grime for a sharp, vivid view.

CASEMENT SCREEN OPTIONS

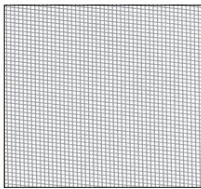


WOOD SCREEN SURROUND
The patented wood screen surround with wood interior and aluminum exterior features Marvin Bright View™ screen mesh. Aluminum screen mesh options also available.

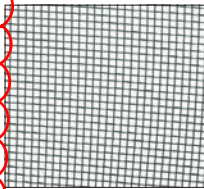


INSWING CASEMENT SCREEN
The beautifully crafted inswing screen adds a classic touch and allows access to operate push-out casement and awning windows.

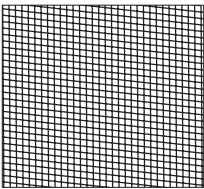
SCREEN MESH OPTIONS



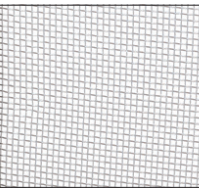
MARVIN
BRIGHT VIEW™



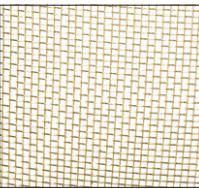
CHARCOAL
ALUMINUM WIRE



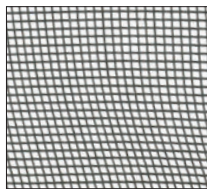
BLACK
ALUMINUM WIRE



BRIGHT
ALUMINUM WIRE



BRIGHT
BRONZE WIRE



CHARCOAL
FIBERGLASS

DOUBLE HUNG SCREEN OPTIONS



FULL OR HALF SCREEN

Exterior aluminum screen with an aluminum surround. The full screen covers both the top and bottom sash. The half screen only covers the bottom sash.



DOUBLE HUNG STORM OPTIONS



TWO-LITE WOOD STORM SASH OR SCREEN

A wood frame containing non-removable glass. The storm sash can be removed during the summer and replaced with a wood-framed screen. Available only for wood windows.



STORM AND SCREEN COMBINATIONS

A combination unit is composed of two glass panels and one screen panel that can be easily removed from the interior for cleaning. Available with a wood (bare or primed) or aluminum surround, panels can be configured multiple ways, glass above screen, screen above glass, or glass above glass.



ENERGY PANEL

Often confused with storm windows, an energy panel is technically a glazing option. It is a removable, exterior glass panel finished on the edges by a surround. Energy panels cover the exposed glass surface of each sash and offer added energy efficiency for wood windows with single glazing.

DOOR SCREEN OPTIONS



SCENIC DOOR SLIDING SCREEN

The Marvin Ultimate Sliding Screen operates with ease and conceals when not in use. The screen is unobtrusive even in large sizes measuring up to 15 feet wide and up to 10 feet high uni-directional or up to 29.5 feet wide bi-parting.



ULTIMATE SWINGING SCREEN DOOR

With profiles that complement the aesthetics of the door, swinging door screens feature robust, durable extruded aluminum surrounds and concealed hinges.



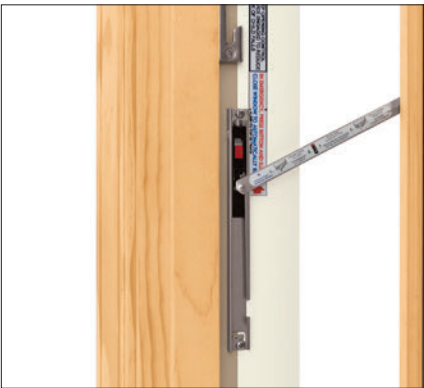
ULTIMATE SLIDING SCREEN DOOR

Aluminum top hung sliding screen with roller bar, adjustable rollers and unmatched sliding operation.

Marvin window and door screens come standard with Marvin Bright View™ – a fiberglass screen mesh that provides improved airflow and more natural light while keeping insects out. Bright View repels water and resists dirt and grime for a sharp, vivid view.

WINDOW OPENING CONTROL DEVICES

Marvin Window Opening Control Devices (WOCD) meet the ASTM F2090-21 standard, created to assist in the prevention of window falls. To meet the standard, our devices limit the window's net clear opening to less than 4 inches (when the sash is open) and have a release function allowing the window to open completely. In order to meet the safety standard, WOCD disengagement takes two independent actions, which helps prevent accidental release. Devices will then automatically reengage once the window is closed and again limit the window opening to less than 4 inches upon re-opening.



ULTIMATE CASEMENT



ULTIMATE DOUBLE HUNG G2



ULTIMATE GLIDER

WINDOW HARDWARE



ULTIMATE DOUBLE HUNG G2 WINDOW WITH AUTO-LOCKING SASH LOCK IN SATIN NICKEL

WINDOW HARDWARE

Ultimate’s durable and elegant hardware is engineered for reliability and to harmonize with any décor. Choose a finish to complement your architectural style. Durable painted finishes in Matte Black, Satin Taupe, Bronze, and White mimic the look of metal. Satin Nickel, Brass, Antique Brass, Polished Chrome, Oil Rubbed Bronze, and Satin Chrome offer the rich appearance and durability of authentic metal finishes.



AUTO-LOCKING HARDWARE SYSTEM

PRODUCTS:
Ultimate Double Hung G2
Ultimate Single Hung G2

AVAILABLE FINISHES:
Matte Black • Brass • Satin Taupe
Satin Nickel • Bronze • White
Antique Brass • Oil Rubbed Bronze
Polished Chrome • Satin Chrome



TRADITIONAL LIFT LOCK

PRODUCTS:
Ultimate Single Hung G2

AVAILABLE FINISHES:
Matte Black • Brass • Satin Taupe
Satin Nickel • Bronze • White
Antique Brass • Oil Rubbed Bronze
Polished Chrome • Satin Chrome



CONTEMPORARY LIFT LOCK

PRODUCTS:
Ultimate Single Hung G2

AVAILABLE FINISHES:
Matte Black • Brass • Satin Taupe
Satin Nickel • Bronze • White
Antique Brass • Oil Rubbed Bronze
Polished Chrome • Satin Chrome



FOLDING HANDLE

PRODUCTS:
Ultimate Casement • Ultimate Awning
Ultimate Casement Narrow Frame
Ultimate Awning Narrow Frame

AVAILABLE FINISHES:
Matte Black • Brass • Satin Taupe
Satin Nickel • Bronze • White
Antique Brass • Oil Rubbed Bronze
Polished Chrome • Satin Chrome



PUSH OUT HANDLE

PRODUCTS:
Ultimate Casement • Ultimate Awning
Ultimate Casement Narrow Frame
Ultimate Awning Narrow Frame

AVAILABLE FINISHES:
Matte Black • Brass • White
Antique Brass • Oil Rubbed Bronze
Satin Nickel



FOLDING HANDLE

PRODUCTS:
Ultimate Glider

AVAILABLE FINISHES:
Matte Black • Brass • Satin Taupe
Satin Nickel • Bronze • White
Antique Brass • Oil Rubbed Bronze
Polished Chrome • Satin Chrome

FINISHES

| |
|-------------------|
| MATTE BLACK |
| BRONZE |
| OIL RUBBED BRONZE |
| ANTIQUE BRASS |
| SATIN TAUPE |
| SATIN NICKEL |
| BRASS |
| POLISHED CHROME |
| SATIN CHROME |
| WHITE |



2731

BOSC COLLECTION

WALL MOUNT

DIMENSIONS

DEPTH: 13"

WIDTH: 11"

HEIGHT: 24.75"

MOUNTING HEIGHT FROM TOP

14.5"

MOUNTING AREA

4.5"W x 5.75"H

SOCKET OPTIONS

**(MED) MEDIUM BASE SOCKET;
75 WATT MAX (SHOWN)**

UL LISTED

**SUITABLE FOR WET
LOCATIONS**



FINISHES

AB - ANTIQUE BRASS (SHOWN)

DAB - DARK ANTIQUE BRASS

DB - DARK BRASS

VG - VERDI GRIS

AC - ANTIQUE COPPER

GLASS OPTIONS

CLR - CLEAR

CSG - CLEAR SEEDY

SMG - SEEDY MARINE

FST - FROSTED

2022 NORTHEAST LANTERN, LLC, 6 COMMERCE WAY, EXETER, NH 03833,

800-892-1206, INFO@NORTHEASTLANTERN.COM

HANDCRAFTED IN THE USA.

LIFETIME WARRANTY ON CRAFTSMANSHIP.





Tech Specs - Floodlight Cam Plus Plug-In

Size and Color

Dimensions

11.7 in x 7.03 in x 9.67 in
Base/Mounting Bracket: 4.7 in diameter
Plug-in cord length 20 feet

Available Colors

Black, ~~White~~

Stair Rail and Fence Sample:

