



EXISTING CONDITIONS



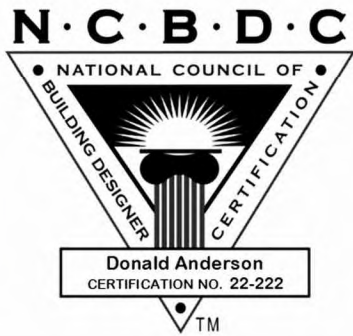
THIS PLAN DESIGNED IN ACCORDANCE WITH 2021 IRC.

Builder's Plan Service is a drafting service and not an architectural or engineering firm. These plans are intended for dimensional and conceptual use and should be reviewed by a structural engineer for compliance to local building codes. These plans are not specific to any particular site and may require soil tests.

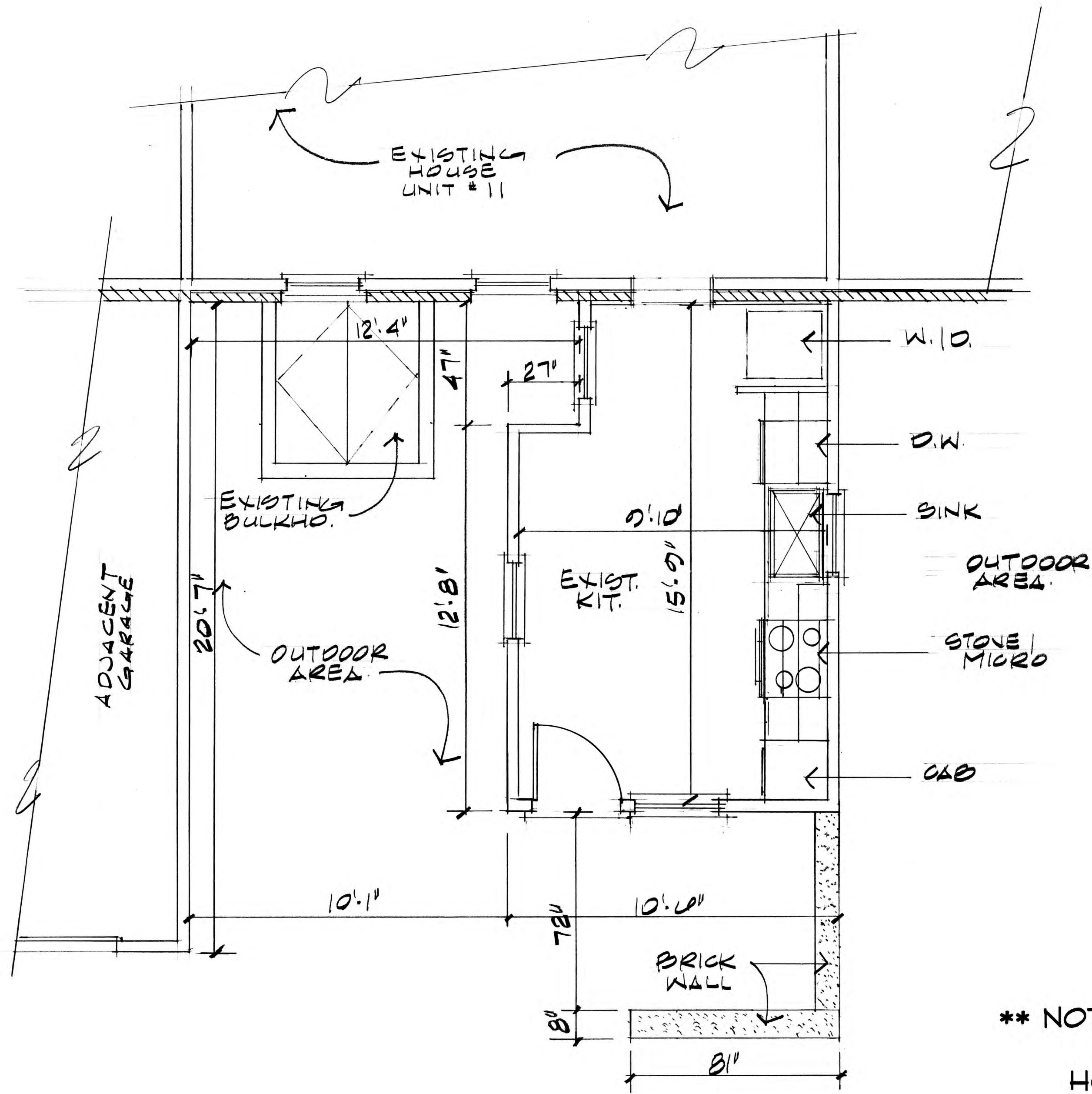
DRAWN BY: *AD*
DATE: 05-22-2025
REVISIONS:

RESIDENCE FOR:
FRANK AZZOLINO
11 SHEAFE STREET
PORTSMOUTH, NH

BUILDER'S PLAN SERVICE
 DON ANDERSON, INC., CPBD
 83 PARKHURST ROAD #14
 CHELMSFORD, MA 01824
 (978) 937-5023

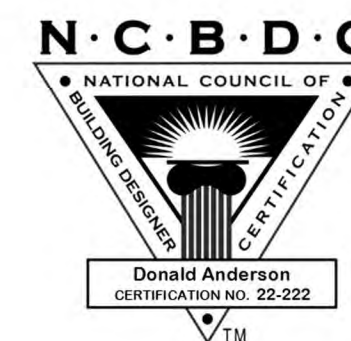


SHEET 1
OF 3

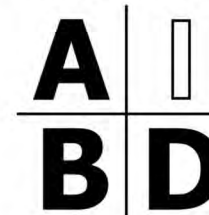


EXISTING FLOOR PLAN
 $\frac{3}{8}'' = 1'-0''$

THIS PLAN DESIGNED IN ACCORDANCE WITH 2021 IRC.



MEMBER



AMERICAN INSTITUTE of
BUILDING DESIGN

**** NOTE: FIELD VERIFY ****
ALL EXISTING
HOUSE DIMENSIONS

RESIDENCE FOR:

FRANK AZZOLINO
11 SHEAFE STREET
PORTSMOUTH, NH

BUILDER'S PLAN SERVICE

DON ANDERSON, INC., CPBD
 83 PARKHURST ROAD #14
 CHELMSFORD, MA 01824
 (978) 937-5023

SHEET

OF

2
3

DRAWN BY: *RA*

DATE: 05-22-2025

REVISIONS:

Builder's Plan Service is a drafting service and not an architectural or engineering firm. These plans are intended for dimensional and conceptual use and should be reviewed by a structural engineer for compliance to local building codes. These plans are not specific to any particular site and may require soil tests.

**** NOTE: FIELD VERIFY ****
ALL EXISTING
HOUSE DIMENSIONS

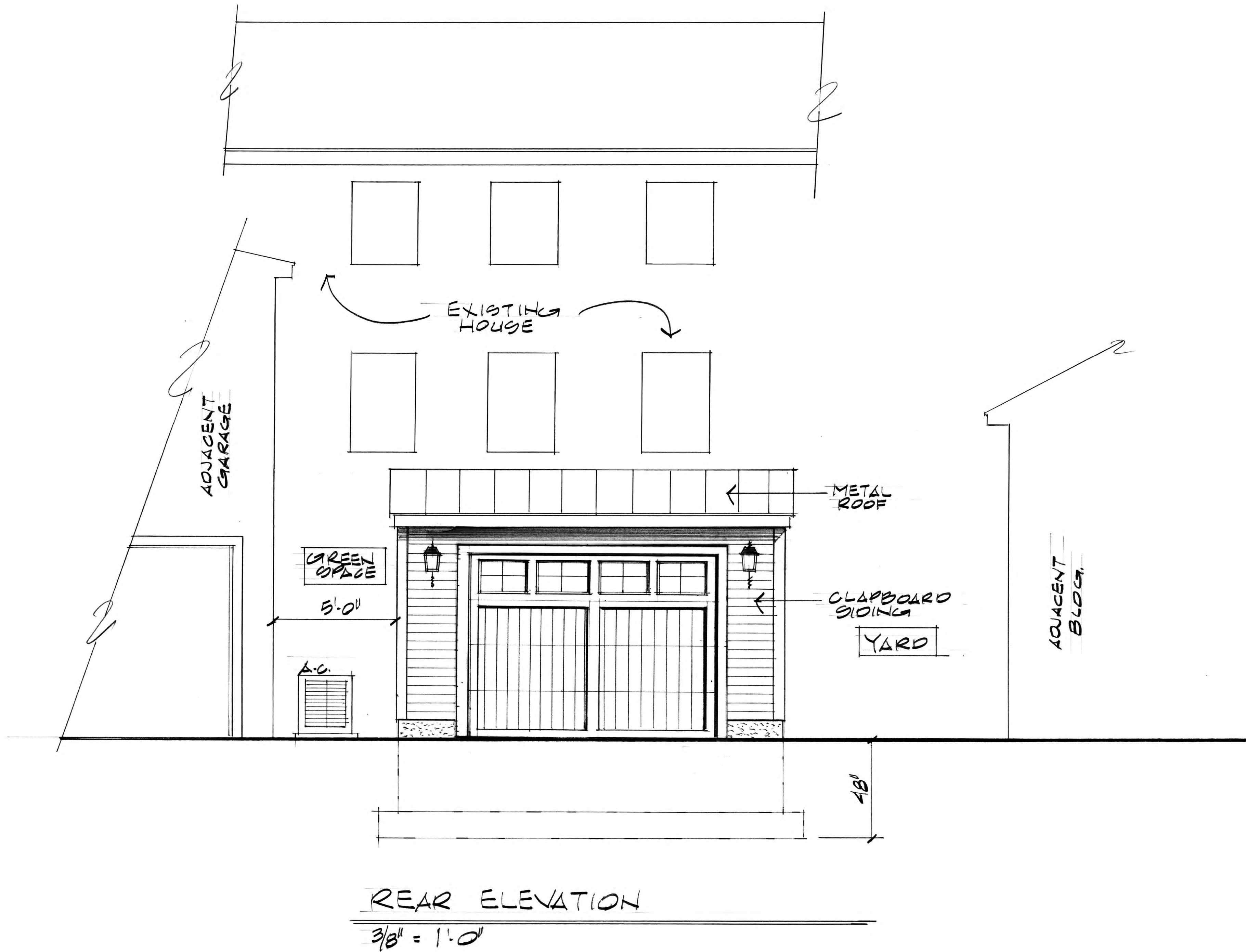
Builder's Plan Service is a drafting service and not an architectural or engineering firm. These plans are intended for dimensional and conceptual use and should be reviewed by a structural engineer for compliance to local building codes. These plans are not specific to any particular site and may require soil tests.

DRAWN BY: *RA*
DATE: 06-02-2025
REVISIONS:

RESIDENCE FOR:
FRANK AZZOLINO
11 SHEAFE STREET
PORTSMOUTH, NH

BUILDER'S PLAN SERVICE
DON ANDERSON, INC., CPBD
83 PARKHURST ROAD #14
CHELMSFORD, MA 01824
(978) 937-5023

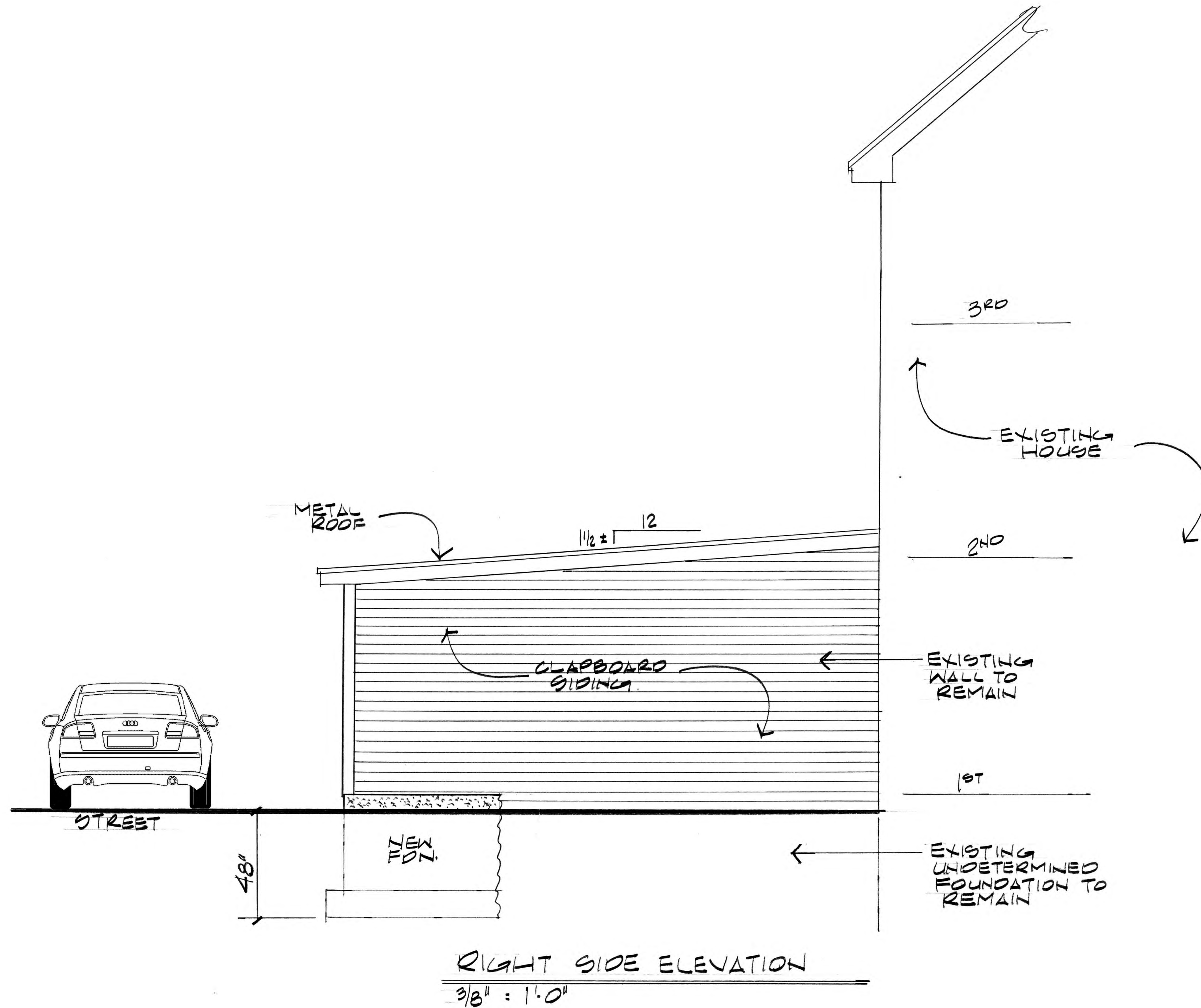
SHEET **4**
OF **6**



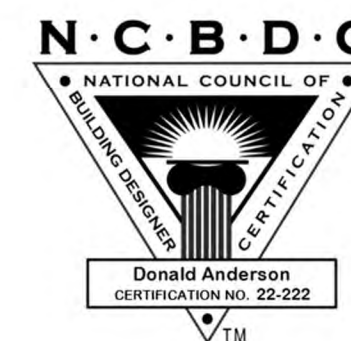
THIS PLAN DESIGNED IN ACCORDANCE WITH 2021 IRC.



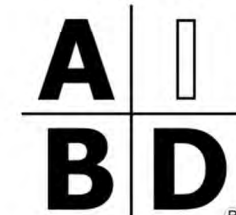
MEMBER
A I B D
AMERICAN INSTITUTE of
BUILDING DESIGN



THIS PLAN DESIGNED IN ACCORDANCE WITH 2021 IRC.



MEMBER



AMERICAN INSTITUTE of BUILDING DESIGN

SHEET

OF

5
6

RESIDENCE FOR:

FRANK AZZOLINO
11 SHEAFE STREET
PORTSMOUTH, NH

BUILDER'S PLAN SERVICE

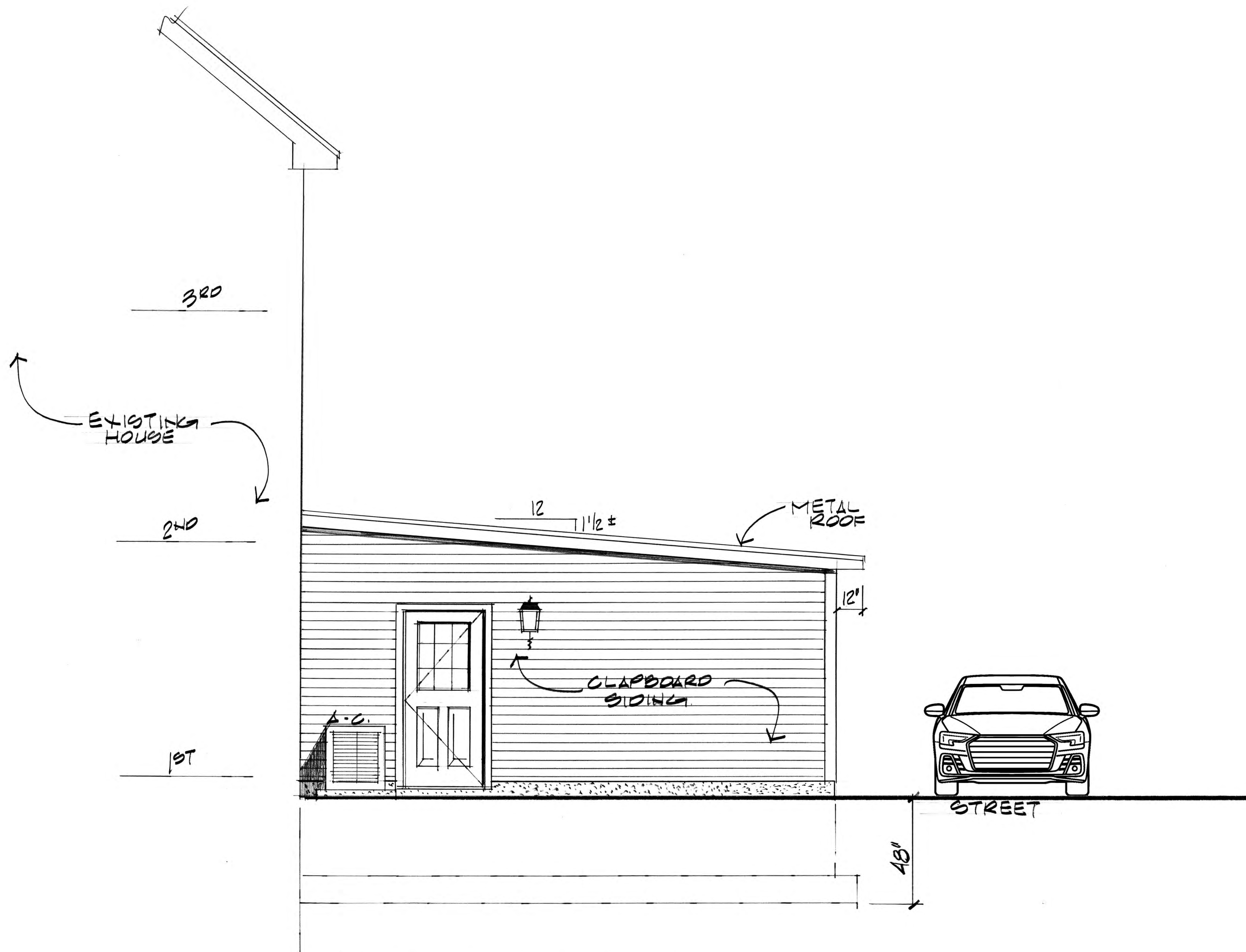
DON ANDERSON, INC., CPBD
 83 PARKHURST ROAD #14
 CHELMSFORD, MA 01824
 (978) 937-5023

Builder's Plan Service is a drafting service and not an architectural or engineering firm. These plans are intended for dimensional and conceptual use and should be reviewed by a structural engineer for compliance to local building codes. These plans are not specific to any particular site and may require soil tests.

DRAWN BY: *AD*

DATE: 06-02-2025

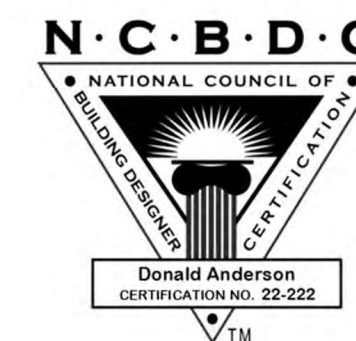
REVISIONS:



LEFT SIDE ELEVATION

3/8" = 1'-0"

THIS PLAN DESIGNED IN ACCORDANCE WITH 2021 IRC.



MEMBER

A I
B D

AMERICAN INSTITUTE of
BUILDING DESIGN

RESIDENCE FOR:

FRANK AZZOLINO
11 SHEAFE STREET
PORTSMOUTH, NH

BUILDER'S PLAN SERVICE

DON ANDERSON, INC., CPBD
83 PARKHURST ROAD #14
CHELMSFORD, MA 01824
(978) 937-5023

SHEET

OF

6
6

Builder's Plan Service is a drafting service and not an architectural or engineering firm. These plans are intended for dimensional and conceptual use and should be reviewed by a structural engineer for compliance to local building codes. These plans are not specific to any particular site and may require soil tests.

DRAWN BY: *AD*

DATE: 06-02-2025

REVISIONS:

Regina & Frank Windows-REV 1

Quote #: XUJNKR7

A Proposal for Window and Door Products prepared for:

Job Site:

03909

Shipping Address:

ELDREDGE LBR & HDWE-YORK
699 US ROUTE 1
YORK, ME 03909-5833

Project Description:

Historical Society

Featuring products from:



ROB FIFIELD
ELDREDGE LBR & HDWE-YORK
PO BOX 69
CAPE NEDDICK, ME 03902-0069
Phone: (207) 363-2004 ;168

Email: rfifield@eldredgelumber.com

This report was generated on 5/27/2025 2:46:05 PM using the Marvin Order Management System, version 0004.15.00 (Current). Price in USD. Unit availability and price are subject to change. Dealer terms and conditions may apply.

UNIT SUMMARY

The following is a schedule of the windows and doors for this project. For additional unit details, please see Line Item Quotes.

Additional charges, tax or Terms and Conditions may apply. Detail pricing is per unit.

NUMBER OF LINES: 8

TOTAL UNIT QTY: 13

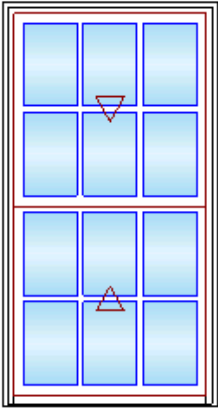
EXT NET PRICE: USD 15,730.64

LINE	MARK UNIT	PRODUCT LINE	ITEM	NET PRICE	QTY	EXTENDED NET PRICE
1	Living (2) - Bed#1 (2)	Elevate	Double Hung RO 32" X 57 1/2" Entered as FS 31" X 57"	1,333.71	4	5,334.84
2	Stair	Elevate	Double Hung RO 32" X 57 1/2" Entered as FS 31" X 57"	1,534.67	1	1,534.67
3	Bed #2	Elevate	Double Hung RO 29" X 44 1/2" Entered as FS 28" X 44"	1,205.76	1	1,205.76
4	Bath(1) -Stair (1)	Elevate	Double Hung RO 33" X 36 1/2" Entered as FS 32" X 36"	1,139.05	2	2,278.10
5	Primary Bedroom	Elevate	Double Hung RO 33" X 36 1/2" Entered as FS 32" X 36"	1,007.95	2	2,015.90
6	Bed #4	Elevate	Double Hung RO 36" X 35 1/2" Entered as FS 35" X 35"	1,026.00	1	1,026.00
7	Hall	Elevate	Double Hung RO 29" X 44 1/2" Entered as FS 28" X 44"	1,205.76	1	1,205.76
8	Bath #1	Elevate	Double Hung RO 31" X 36 1/2" Entered as FS 30" X 36"	1,129.61	1	1,129.61

LINE ITEM QUOTES

The following is a schedule of the windows and doors for this project. For additional unit details, please see Line Item Quotes. Additional charges, tax or Terms and Conditions may apply. Detail pricing is per unit.

Line #1	Mark Unit: Living (2) - Bed#1 (2)	Net Price:		1,333.71
Qty: 4		Ext. Net Price:	USD	5,334.84



As Viewed From The Exterior

Entered As: FS

FS 31" X 57"

RO 32" X 57 1/2"

Egress Information

Width: 27 7/8" Height: 23 19/32"

Net Clear Opening: 4.57 SqFt

Performance Information

U-Factor: 0.28

Solar Heat Gain Coefficient: 0.28

Visible Light Transmittance: 0.48

Condensation Resistance: 56

CPD Number: MAR-N-272-01534-00001

Performance Grade

Licensee #783

AAMA/WDMA/CSA/101/ I.S.2/A440-08

LC-PG40 1054X1720 mm (41.5X67.75 in)

Water Resistance: 4.60 psf

LC-PG40 DP +40/-40

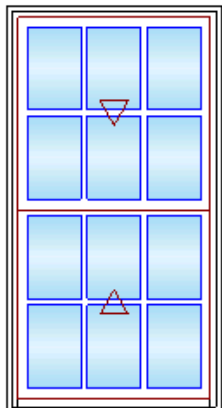
FL6525

Ebony Exterior
Painted Interior Finish - Designer Black Pine Interior
Elevate Double Hung
Frame Size 31" X 57"
Rough Opening 32" X 57 1/2"
Top Sash
Ebony Exterior
Painted Interior Finish - Designer Black Pine Interior
IG
Low E2 w/Argon
Black Perimeter and Spacer Bar
7/8" SDL - With Spacer Bar - Black
Rectangular - Special Cut 3W2H
Ebony Ext - Painted Interior Finish - Designer Black Int
Bottom Sash
Ebony Exterior
Painted Interior Finish - Designer Black Pine Interior
IG
Low E2 w/Argon
Black Perimeter and Spacer Bar
7/8" SDL - With Spacer Bar - Black
Rectangular - Special Cut 3W2H
Ebony Ext - Painted Interior Finish - Designer Black Int
Black Weather Strip Package
1 Matte Black Sash Lock
Exterior Aluminum Half Screen
Ebony Surround
Bright View Mesh
6 9/16" Jamb
Painted Interior Finish - Designer Black Jamb Extension from 4 9/16" to 6 9/16"
Nailing Fin
***Note: Divided lite cut alignment may not be accurately represented in the OMS drawing. Please consult your local representative for exact specifications.
***Note: Unit Availability and Price is Subject to Change

Line #2	Mark Unit: Stair	Net Price:		1,534.67
Qty: 1		Ext. Net Price:	USD	1,534.67



Ebony Exterior
Painted Interior Finish - Designer Black Pine Interior
Elevate Double Hung
Frame Size 31" X 57"
Rough Opening 32" X 57 1/2"
Glass Add For All Sash
Top Sash
Ebony Exterior
Painted Interior Finish - Designer Black Pine Interior
IG
Tempered Low E2 w/Argon
Black Perimeter and Spacer Bar
7/8" SDL - With Spacer Bar - Black
Rectangular - Special Cut 3W2H

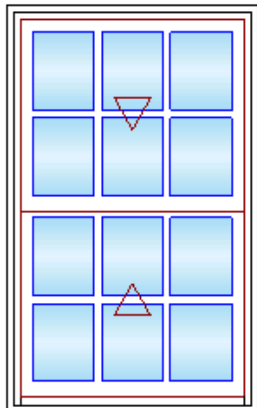


As Viewed From The Exterior

Entered As: FS
FS 31" X 57"
RO 32" X 57 1/2"
Egress Information
Width: 27 7/8" Height: 23 19/32"
Net Clear Opening: 4.57 SqFt
Performance Information
U-Factor: 0.28
Solar Heat Gain Coefficient: 0.28
Visible Light Transmittance: 0.48
Condensation Resistance: 56
CPD Number: MAR-N-272-01534-00001
Performance Grade
Licensee #783
AAMA/WDMA/CSA/101/ I.S.2/A440-08
LC-PG40 1054X1720 mm (41.5X67.75 in)
Water Resistance: 4.60 psf
LC-PG40 DP +40/-40
FL6525

Ebony Ext - Painted Interior Finish - Designer Black Int
Bottom Sash
Ebony Exterior
Painted Interior Finish - Designer Black Pine Interior
IG
Tempered Low E2 w/Argon
Black Perimeter and Spacer Bar
7/8" SDL - With Spacer Bar - Black
Rectangular - Special Cut 3W2H
Ebony Ext - Painted Interior Finish - Designer Black Int
Black Weather Strip Package
1 Matte Black Sash Lock
Exterior Aluminum Half Screen
Ebony Surround
Bright View Mesh
6 9/16" Jambs
Painted Interior Finish - Designer Black Jamb Extension from 4 9/16" to 6 9/16"
Nailing Fin
***Note: Divided lite cut alignment may not be accurately represented in the OMS drawing. Please consult your local representative for exact specifications.
***Note: Unit Availability and Price is Subject to Change

Line #3	Mark Unit: Bed #2	Net Price:		1,205.76
Qty: 1		Ext. Net Price:	USD	1,205.76



As Viewed From The Exterior

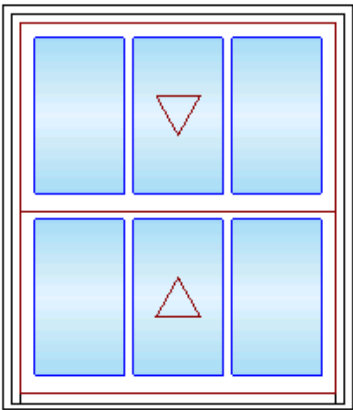
Entered As: FS
FS 28" X 44"
RO 29" X 44 1/2"
Egress Information
Width: 24 7/8" Height: 17 3/32"
Net Clear Opening: 2.95 SqFt
Performance Information
U-Factor: 0.28

Ebony Exterior
Painted Interior Finish - Designer Black Pine Interior
Elevate Double Hung
Frame Size 28" X 44"
Rough Opening 29" X 44 1/2"
Top Sash
Ebony Exterior
Painted Interior Finish - Designer Black Pine Interior
IG
Low E2 w/Argon
Black Perimeter and Spacer Bar
7/8" SDL - With Spacer Bar - Black
Rectangular - Special Cut 3W2H
Ebony Ext - Painted Interior Finish - Designer Black Int
Bottom Sash
Ebony Exterior
Painted Interior Finish - Designer Black Pine Interior
IG
Low E2 w/Argon
Black Perimeter and Spacer Bar
7/8" SDL - With Spacer Bar - Black
Rectangular - Special Cut 3W2H
Ebony Ext - Painted Interior Finish - Designer Black Int
Black Weather Strip Package
1 Matte Black Sash Lock
Exterior Aluminum Half Screen
Ebony Surround
Bright View Mesh

Solar Heat Gain Coefficient: 0.28
Visible Light Transmittance: 0.48
Condensation Resistance: 56
CPD Number: MAR-N-272-01534-00001
Performance Grade
Licensee #783
AAMA/WDMA/CSA/101/ I.S.2/A440-08
LC-PG40 1054X1720 mm (41.5X67.75 in)
Water Resistance: 4.60 psf
LC-PG40 DP +40/-40
FL6525

6 9/16" Jambs
Painted Interior Finish - Designer Black Jamb Extension from 4 9/16" to 6 9/16"
Nailing Fin
***Note: Divided lite cut alignment may not be accurately represented in the OMS drawing. Please consult your local representative for exact specifications.
***Note: Unit Availability and Price is Subject to Change

Line #4	Mark Unit: Bath(1) -Stair (1)	Net Price:		1,139.05
Qty: 2		Ext. Net Price:	USD	2,278.10



As Viewed From The Exterior

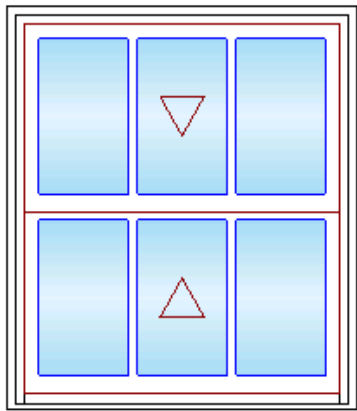
Entered As: FS
FS 32" X 36"
RO 33" X 36 1/2"
Egress Information
Width: 28 7/8" Height: 13 3/32"
Net Clear Opening: 2.63 SqFt
Performance Information
U-Factor: 0.28
Solar Heat Gain Coefficient: 0.28
Visible Light Transmittance: 0.48
Condensation Resistance: 56
CPD Number: MAR-N-272-01534-00001
Performance Grade
Licensee #783
AAMA/WDMA/CSA/101/ I.S.2/A440-08
LC-PG40 1054X1720 mm (41.5X67.75 in)
Water Resistance: 4.60 psf
LC-PG40 DP +40/-40
FL6525

Ebony Exterior
Painted Interior Finish - Designer Black Pine Interior
Elevate Double Hung
Frame Size 32" X 36"
Rough Opening 33" X 36 1/2"
Glass Add For All Sash
Top Sash
Ebony Exterior
Painted Interior Finish - Designer Black Pine Interior
IG
Tempered Low E2 w/Argon
Black Perimeter and Spacer Bar
7/8" SDL - With Spacer Bar - Black
Rectangular - Special Cut 3W1H
Ebony Ext - Painted Interior Finish - Designer Black Int
Bottom Sash
Ebony Exterior
Painted Interior Finish - Designer Black Pine Interior
IG
Tempered Low E2 w/Argon
Black Perimeter and Spacer Bar
7/8" SDL - With Spacer Bar - Black
Rectangular - Special Cut 3W1H
Ebony Ext - Painted Interior Finish - Designer Black Int
Black Weather Strip Package
1 Matte Black Sash Lock
Exterior Aluminum Half Screen
Ebony Surround
Bright View Mesh
6 9/16" Jambs
Painted Interior Finish - Designer Black Jamb Extension from 4 9/16" to 6 9/16"
Nailing Fin
***Note: Divided lite cut alignment may not be accurately represented in the OMS drawing. Please consult your local representative for exact specifications.
***Note: Unit Availability and Price is Subject to Change

Line #5	Mark Unit: Primary Bedroom	Net Price:		1,007.95
Qty: 2		Ext. Net Price:	USD	2,015.90



Ebony Exterior
Painted Interior Finish - Designer Black Pine Interior
Elevate Double Hung
Frame Size 32" X 36"
Rough Opening 33" X 36 1/2"
Top Sash
Ebony Exterior
Painted Interior Finish - Designer Black Pine Interior
IG

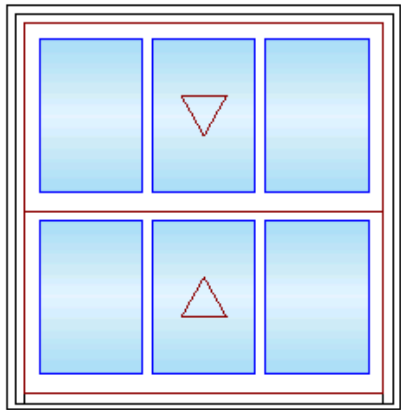


As Viewed From The Exterior

Entered As: FS
FS 32" X 36"
RO 33" X 36 1/2"
Egress Information
Width: 28 7/8" Height: 13 3/32"
Net Clear Opening: 2.63 SqFt
Performance Information
U-Factor: 0.28
Solar Heat Gain Coefficient: 0.28
Visible Light Transmittance: 0.48
Condensation Resistance: 56
CPD Number: MAR-N-272-01534-00001
Performance Grade
Licensee #783
AAMA/WDMA/CSA/101/ I.S.2/A440-08
LC-PG40 1054X1720 mm (41.5X67.75 in)
Water Resistance: 4.60 psf
LC-PG40 DP +40/-40
FL6525

Low E2 w/Argon
Black Perimeter and Spacer Bar
7/8" SDL - With Spacer Bar - Black
Rectangular - Special Cut 3W1H
Ebony Ext - Painted Interior Finish - Designer Black Int
Bottom Sash
Ebony Exterior
Painted Interior Finish - Designer Black Pine Interior
IG
Low E2 w/Argon
Black Perimeter and Spacer Bar
7/8" SDL - With Spacer Bar - Black
Rectangular - Special Cut 3W1H
Ebony Ext - Painted Interior Finish - Designer Black Int
Black Weather Strip Package
1 Matte Black Sash Lock
Exterior Aluminum Half Screen
Ebony Surround
Bright View Mesh
6 9/16" Jambs
Painted Interior Finish - Designer Black Jamb Extension from 4 9/16" to 6 9/16"
Nailing Fin
***Note: Divided lite cut alignment may not be accurately represented in the OMS drawing. Please consult your local representative for exact specifications.
***Note: Unit Availability and Price is Subject to Change

Line #6	Mark Unit: Bed #4	Net Price:		1,026.00
Qty: 1		Ext. Net Price:	USD	1,026.00



As Viewed From The Exterior

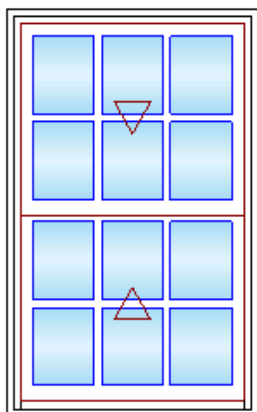
Entered As: FS
FS 35" X 35"
RO 36" X 35 1/2"
Egress Information
Width: 31 7/8" Height: 12 19/32"
Net Clear Opening: 2.79 SqFt
Performance Information
U-Factor: 0.28

Ebony Exterior
Painted Interior Finish - Designer Black Pine Interior
Elevate Double Hung
Frame Size 35" X 35"
Rough Opening 36" X 35 1/2"
Top Sash
Ebony Exterior
Painted Interior Finish - Designer Black Pine Interior
IG
Low E2 w/Argon
Black Perimeter and Spacer Bar
7/8" SDL - With Spacer Bar - Black
Rectangular - Special Cut 3W1H
Ebony Ext - Painted Interior Finish - Designer Black Int
Bottom Sash
Ebony Exterior
Painted Interior Finish - Designer Black Pine Interior
IG
Low E2 w/Argon
Black Perimeter and Spacer Bar
7/8" SDL - With Spacer Bar - Black
Rectangular - Special Cut 3W1H
Ebony Ext - Painted Interior Finish - Designer Black Int
Black Weather Strip Package
1 Matte Black Sash Lock
Exterior Aluminum Half Screen
Ebony Surround
Bright View Mesh

Solar Heat Gain Coefficient: 0.28
Visible Light Transmittance: 0.48
Condensation Resistance: 56
CPD Number: MAR-N-272-01534-00001
Performance Grade
Licensee #783
AAMA/WDMA/CSA/101/ I.S.2/A440-08
LC-PG40 1054X1720 mm (41.5X67.75 in)
Water Resistance: 4.60 psf
LC-PG40 DP +40/-40
FL6525

6 9/16" Jambs
Painted Interior Finish - Designer Black Jamb Extension from 4 9/16" to 6 9/16"
Nailing Fin
***Note: Divided lite cut alignment may not be accurately represented in the OMS drawing. Please consult your local representative for exact specifications.
***Note: Unit Availability and Price is Subject to Change

Line #7	Mark Unit: Hall	Net Price:		1,205.76
Qty: 1		Ext. Net Price:	USD	1,205.76



As Viewed From The Exterior

Entered As: FS
FS 28" X 44"
RO 29" X 44 1/2"
Egress Information
Width: 24 7/8" Height: 17 3/32"
Net Clear Opening: 2.95 SqFt
Performance Information
U-Factor: 0.28
Solar Heat Gain Coefficient: 0.28
Visible Light Transmittance: 0.48
Condensation Resistance: 56
CPD Number: MAR-N-272-01534-00001
Performance Grade
Licensee #783
AAMA/WDMA/CSA/101/ I.S.2/A440-08
LC-PG40 1054X1720 mm (41.5X67.75 in)
Water Resistance: 4.60 psf
LC-PG40 DP +40/-40
FL6525

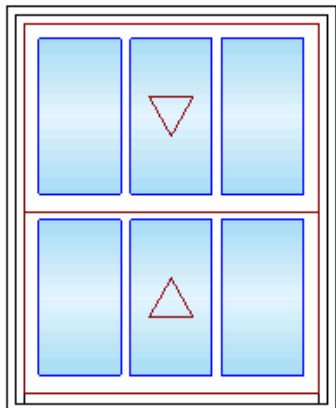
Ebony Exterior
Painted Interior Finish - Designer Black Pine Interior
Elevate Double Hung
Frame Size 28" X 44"
Rough Opening 29" X 44 1/2"
Top Sash
Ebony Exterior
Painted Interior Finish - Designer Black Pine Interior
IG
Low E2 w/Argon
Black Perimeter and Spacer Bar
7/8" SDL - With Spacer Bar - Black
Rectangular - Special Cut 3W2H
Ebony Ext - Painted Interior Finish - Designer Black Int
Bottom Sash
Ebony Exterior
Painted Interior Finish - Designer Black Pine Interior
IG
Low E2 w/Argon
Black Perimeter and Spacer Bar
7/8" SDL - With Spacer Bar - Black
Rectangular - Special Cut 3W2H
Ebony Ext - Painted Interior Finish - Designer Black Int
Black Weather Strip Package
1 Matte Black Sash Lock
Exterior Aluminum Half Screen
Ebony Surround
Bright View Mesh

6 9/16" Jambs
Painted Interior Finish - Designer Black Jamb Extension from 4 9/16" to 6 9/16"
Nailing Fin
***Note: Divided lite cut alignment may not be accurately represented in the OMS drawing. Please consult your local representative for exact specifications.
***Note: Unit Availability and Price is Subject to Change

Line #8	Mark Unit: Bath #1	Net Price:		1,129.61
Qty: 1		Ext. Net Price:	USD	1,129.61



Ebony Exterior
Painted Interior Finish - Designer Black Pine Interior
Elevate Double Hung
Frame Size 30" X 36"
Rough Opening 31" X 36 1/2"
Glass Add For All Sash
Top Sash
Ebony Exterior
Painted Interior Finish - Designer Black Pine Interior



As Viewed From The Exterior

Entered As: FS
FS 30" X 36"
RO 31" X 36 1/2"
Egress Information
Width: 26 7/8" Height: 13 3/32"
Net Clear Opening: 2.44 SqFt
Performance Information
U-Factor: 0.28
Solar Heat Gain Coefficient: 0.28
Visible Light Transmittance: 0.48
Condensation Resistance: 56
CPD Number: MAR-N-272-01534-00001
Performance Grade
Licensee #783
AAMA/WDMA/CSA/101/ I.S.2/A440-08
LC-PG40 1054X1720 mm (41.5X67.75 in)
Water Resistance: 4.60 psf
LC-PG40 DP +40/-40
FL6525

IG
Tempered Low E2 w/Argon
Black Perimeter and Spacer Bar
7/8" SDL - With Spacer Bar - Black
Rectangular - Special Cut 3W1H
Ebony Ext - Painted Interior Finish - Designer Black Int
Bottom Sash
Ebony Exterior
Painted Interior Finish - Designer Black Pine Interior
IG
Tempered Low E2 w/Argon
Black Perimeter and Spacer Bar
7/8" SDL - With Spacer Bar - Black
Rectangular - Special Cut 3W1H
Ebony Ext - Painted Interior Finish - Designer Black Int
Black Weather Strip Package
1 Matte Black Sash Lock
Exterior Aluminum Half Screen
Ebony Surround
Bright View Mesh
6 9/16" Jamb
Painted Interior Finish - Designer Black Jamb Extension from 4 9/16" to 6 9/16"
Nailing Fin
***Note: Divided lite cut alignment may not be accurately represented in the OMS drawing. Please consult your local representative for exact specifications.
***Note: Unit Availability and Price is Subject to Change

Project Subtotal Net Price: USD	15,730.64
5.500% Sales Tax: USD	865.19
Project Total Net Price: USD	16,595.83

PRODUCT AND PERFORMANCE INFORMATION

NFRC Ratings:

NFRC energy ratings may vary depending on the exact configuration of glass thickness used on the unit. NFRC energy values and ratings may change over time due to ongoing product changes, updated test results or requirements. NFRC values and ratings are finalized on the date of manufacture.

The National Fenestration Rating Council (NFRC) has developed and operates a uniform rating system for the energy performance of fenestration products, including windows, doors and skylights. For additional information regarding this rating system, see www.nfrc.org.

Code (residential, building or energy) Compliance:

Determining the suitability and compliance with state, provincial, local, or other applicable building codes or standards, including energy codes, is the responsibility of the buyer, user, architect, contractor, installer, and/or other construction professional.

PURCHASE APPROVAL/SIGN OFF

Project Subtotal Net Price: USD 15,730.64
5.500% Sales Tax: USD 865.19
Project Total Net Price: USD 16,595.83

I have reviewed all line item quotes in detail and agree that the product specifications and pricing are accurate, and I approve the project for order. I acknowledge that additional charges, tax or Terms and Conditions may apply.

Seller: _____

Buyer: _____

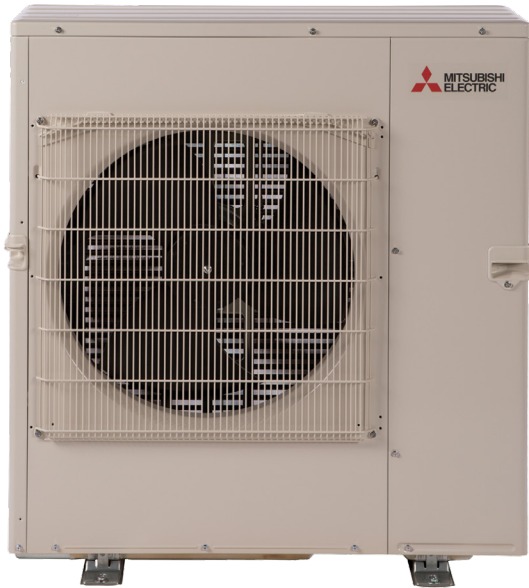
MXZ-5C42NA3 3.5-TON MULTI-ZONE INVERTER HEAT-PUMP SYSTEM



Job Name:

System Reference:

Date:



FEATURES

- Variable speed INVERTER-driven compressor
- Optional base pan heater
- Quiet outdoor unit operation as low as 56 dB(A)
- High pressure protection
- Compressor thermal protection
- Compressor overcurrent detection
- Fan motor overheating/voltage protection

SPECIFICATIONS: MXZ-5C42NA3

Cooling ¹ (Non-Ducted // Mix // Ducted)	Maximum Capacity	BTU/H	43,000 // 43,000 // 43,000
	Rated Capacity	BTU/H	40,500 // 39,000 // 37,500
	Minimum Capacity	BTU/H	12,600 // 12,600 // 12,600
	Maximum Power Input	W	4,775 // 4,775 // 4,775
	Rated Power Input	W	4,403 // 4,286 // 4,112
	Power Factor (208V, 230V)	%	98.9, 98.9 // 98.9, 98.9 // 98.9, 98.9
Heating at 47°F ² (Non-Ducted // Mix // Ducted)	Maximum Capacity	BTU/H	53,600 // 53,600 // 53,600
	Rated Capacity	BTU/H	45,000 // 43,000 // 41,000
	Minimum Capacity	BTU/H	11,400 // 11,400 // 11,400
	Maximum Power Input	W	6,160 // 6,160 // 6,160
	Rated Power Input	W	3,575 // 3,519 // 3,463
	Power Factor (208V, 230V)	%	98.1, 98.1 // 98.2, 98.2 // 98.2, 98.2
Heating at 17°F ³ (Non-Ducted // Mix // Ducted)	Maximum Capacity	BTU/H	30,500 // 29,800 // 29,100
	Rated Capacity	BTU/H	24,400 // 23,700 // 23,000
	Maximum Power Input	W	4,750 // 4,991 // 5,231
	Rated Power Input	W	2,943 // 2,906 // 2,869
Heating at 5°F ⁴ (Non-Ducted // Mix // Ducted)	Maximum Capacity	BTU/H	25,000 // 25,000 // 25,000
	Maximum Power Input	W	5,000 // 5,200 // 5,400
Efficiency (Non-Ducted // Mix // Ducted)	SEER		19.7 // 17.4 // 15.2
	EER ¹		9.2 // 9.1 // 9.0
	HSPF (IV)		10.3 // 9.7 // 9.1
	COP at 47°F ²		3.69 // 3.58 // 3.47
	COP at 17°F at Maximum Capacity ³		1.88 // 1.75 // 1.63
	COP at 5°F at Maximum Capacity ⁴		1.47 // 1.42 // 1.36
Electrical	ENERGY STAR® Certified		No // No // No
	Electrical Power Requirements	Voltage, Phase, Frequency	208/230, 1, 60
	Guaranteed Voltage Range	V AC	187-253
	Voltage: Indoor - Outdoor, S1-S2	V AC	208/230
	Voltage: Indoor - Outdoor, S2-S3	V DC	24
	Short-circuit Current Rating (SCCR)	kA	5
	Recommended Fuse/Breaker Size	A	40
	Recommended Wire Size	AWG	14
	Minimum Circuit Ampacity	A	32.5
	Maximum Overcurrent Protection	A	40
Outdoor unit	Fan Motor Full Load Amperage	A	2.43
	Airflow Rate (Cooling / Heating)	CFM	2,150 / 2,550
	Refrigerant Control		LEV
	Defrost Method		Reverse Cycle
	Heat Exchanger Type		Plate fin coil
	Sound Pressure Level, Cooling ¹	dB(A)	56
	Sound Pressure Level, Heating ²	dB(A)	58
	Compressor Type		DC INVERTER-driven Twin Rotary
	Compressor Model		MNB33FBTMC-L
	Compressor Rated Load Amps	A	20
	Compressor Locked Rotor Amps	A	28.8
	Compressor Oil Type // Charge	oz.	FV50S // 37.2
	Base Pan Heater		Optional
	Unit Dimensions	W: In. [mm]	37-13/32 [950]
		D: In. [mm]	13 [330]
		H: In. [mm]	41-17/64 [1,048]
	Package Dimensions	W: In. [mm]	41-3/8 [1,050]
		D: In. [mm]	17-3/8 [440]
		H: In. [mm]	46-3/4 [1,190]
	Unit Weight	Lbs.[kg]	189 [86]
	Package Weight	Lbs.[kg]	214 [97]
Outdoor unit operating temperature range	Cooling Intake Air Temp (Maximum / Minimum [^])	°FDB	115 / 14
	Cooling Thermal Lock-out / Re-start Temperatures	°FDB	10.4 / 14
	Heating Intake Air Temp (Maximum / Minimum)	°FWB	65 / 5
	Heating Thermal Lock-out / Re-start Temperatures	°FDB	1.4 / 5
Refrigerant	Charge	Lbs, oz	8.0, 13.0
	Chargeless Piping Length	Ft. [m]	98.0 [30.0]
	Additional Refrigerant Charge Per Additional Piping Length	oz./Ft. [g/m]	0.216 [20]

NOTES:

AHRI Rated Conditions

(Rated data is determined at a fixed compressor speed)

¹Cooling (Indoor // Outdoor)

²Heating at 47°F (Indoor // Outdoor)

³Heating at 17°F (Indoor // Outdoor)

°F 80 DB, 67 WB // 95 DB, 75 WB

°F 70 DB, 60 WB // 47 DB, 43 WB

°F 70 DB, 60 WB // 17 DB, 15 WB

Conditions

⁴Heating at 5°F (Indoor // Outdoor)

°F 70 DB, 60 WB // 5 DB, 4 WB

*Applications should be restricted to comfort cooling only; equipment cooling applications are not recommended for low ambient temperature conditions.

[^] 5°F DB - 115°F DB when optional wind baffles are installed

For actual capacity performance based on indoor unit type and number of indoor units connected, please refer to MXZ Operational Performance.

Although the maximum connectable capacity is 130%, the outdoor unit cannot provide more than 100% of the rated capacity. Please utilize this over capacity capability for load shedding or applications where it is known that all connected units will NOT be operating at the same time.

SPECIFICATIONS: MXZ-5C42NA3

Indoor unit connection	Maximum Number of Connected IDU		5
	Minimum Number of Connected IDU		2
	Minimum connected capacity	BTU/H	12,000
	Maximum connected capacity	BTU/H	51,000
Piping	Liquid Pipe Size O.D. (Flared)	In.[mm]	A,B,C,D,E: 1/4 [A,B,C,D,E: 6.35]
	Gas Pipe Size O.D. (Flared)	In.[mm]	A: 1/2; B,C,D,E: 3/8 [A: 12.72; B,C,D,E: 9.52]
	Total Piping Length	Ft. [m]	262 [80]
	Maximum Height Difference, ODU above IDU	Ft. [m]	49 [15]
	Maximum Height Difference, ODU below IDU	Ft. [m]	49 [15]
	Farthest Piping Length from ODU to IDU	Ft. [m]	82 [25]
	Maximum Number of Bends for IDU		80

NOTES:

AHRI Rated Conditions

(Rated data is determined at a fixed compressor speed)

¹Cooling (Indoor // Outdoor)

°F 80 DB, 67 WB // 95 DB, 75 WB

²Heating at 47°F (Indoor // Outdoor)

°F 70 DB, 60 WB // 47 DB, 43 WB

³Heating at 17°F (Indoor // Outdoor)

°F 70 DB, 60 WB // 17 DB, 15 WB

Conditions

⁴Heating at 5°F (Indoor // Outdoor)

°F 70 DB, 60 WB // 5 DB, 4 WB

*Applications should be restricted to comfort cooling only; equipment cooling applications are not recommended for low ambient temperature conditions.

*^ 5°F DB - 115°F DB when optional wind baffles are installed

For actual capacity performance based on indoor unit type and number of indoor units connected, please refer to MXZ Operational Performance.

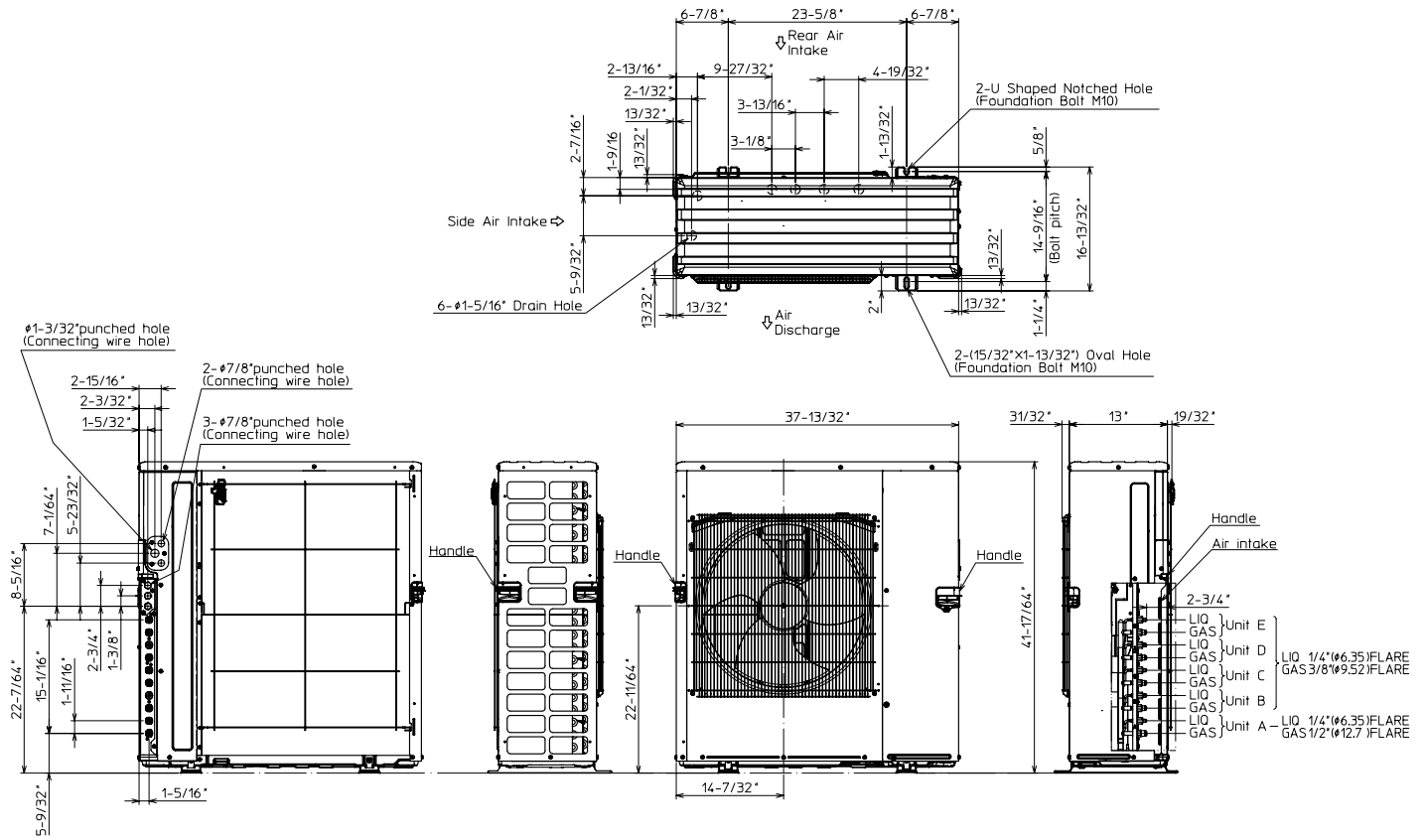
Although the maximum connectable capacity is 130%, the outdoor unit cannot provide more than 100% of the rated capacity. Please utilize this over capacity capability for load shedding or applications where it is known that all connected units will NOT be operating at the same time.

OUTDOOR UNIT ACCESSORIES: MXZ-5C42NA3

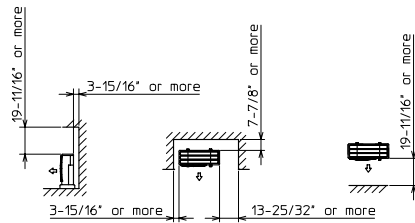
Air Outlet Guide	Air Outlet Guide (1 Piece)	PAC-SH96SG-E
Ball Valve	Refrigeration Ball Valve - 1/2"	BV12FFSI2
	Refrigeration Ball Valve - 1/4"	BV14FFSI2
	Refrigeration Ball Valve - 3/8"	BV38FFSI2
	Refrigeration Ball Valve - 5/8"	BV58FFSI2
Control Wire	M-Net Control Wire, 1,000' Roll (16-AWG, Standard, Twisted Pair, Shielded, Jacketed- Plenum rated)	CW162S-1000
	M-Net Control Wire, 250' Roll (16-AWG, Standard, Twisted Pair, Shielded, Jacketed- Plenum rated)	CW162S-250
Drain Socket	Drain Socket	PAC-SG60DS-E
Hail Guards	Hail Guard	HG-A1
M-NET Converter	M-NET Converter	PAC-IF01MNT-E
Mini-Split Wire	14 Gauge, 4 wire MiniSplit Cable—250 ft. roll	S144-250
	14 Gauge, 4 wire MiniSplit Cable—250 ft. roll	SW144-250
	14 Gauge, 4 wire MiniSplit Cable—50 ft. roll	S144-50
	14 Gauge, 4 wire MiniSplit Cable—50 ft. roll	SW144-50
	16 Gauge, 4 wire MiniSplit Cable—250 ft. roll	S164-250
	16 Gauge, 4 wire MiniSplit Cable—250 ft. roll	SW164-250
	16 Gauge, 4 wire MiniSplit Cable—50 ft. roll	S164-50
	16 Gauge, 4 wire MiniSplit Cable—50 ft. roll	SW164-50
Mounting Pad	Condensing Unit Mounting Pad: 16" x 36" x 3"	ULTRILITE1
	Outdoor Unit 3-1/4 inch Mounting Base (Pair) - Plastic	DSD-400P
Optional Defrost Heater	Optional Defrost Heater	PAC-645BH-E
Port Adapter	Adaptor: 1/2" x 3/8"	MAC-A455JP-E
	Adaptor: 1/2" x 5/8"	MAC-A456JP-E
	Adaptor: 3/8" x 1/2"	MAC-A454JP-E
	Adaptor: 3/8" x 5/8"	PAC-SG76RJ-E
Stand	18" Single Fan Stand	QSMS1801M
	24" Single Fan Stand	QSMS2401M
	Condenser Wall Bracket	QSWB2000M-1
	Condenser Wall Bracket - Stainless Steel Finish	QSWBSS
	Outdoor Unit Stand — 12" High	QSMS1201M

OUTDOOR UNIT DIMENSIONS: MXZ-5C42NA3

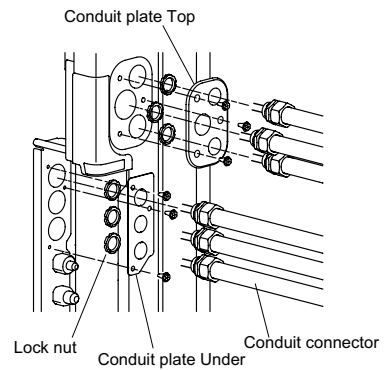
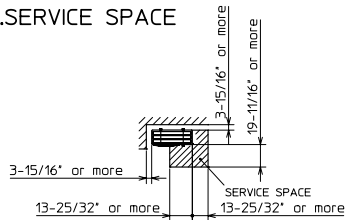
Unit: inch (mm)



1. FREE SPACE



2. SERVICE SPACE



1340 Satellite Boulevard Suwanee, GA 30024
Toll Free: 800-433-4822 www.mehvac.com

FORM# MXZ-5C42NA3 - 202206

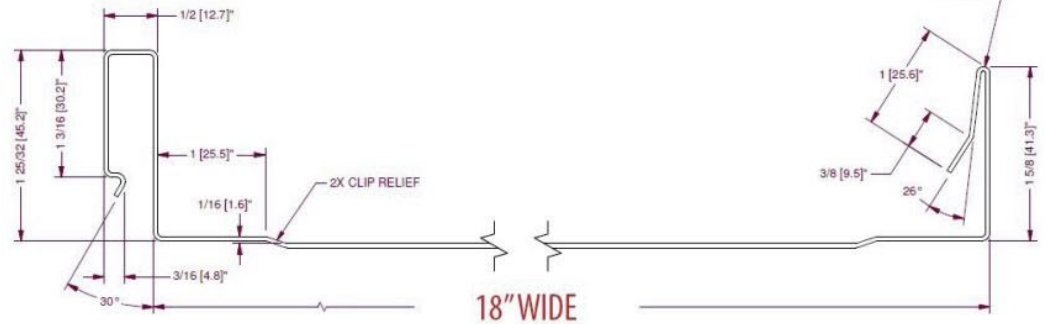


1. Standing Seam Metal Roof – Black Kynar Finish

ADDITIONAL PRODUCT OPTIONS:

- Striations
- Stiffening Ribs/Beads

PROFILE:



Also available are custom panel widths of: 12", 14", 16", 18", 20" and 24"

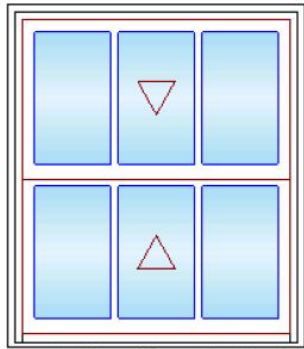
Colors represented on this profile sheet may not match actual material. All colors should be verified using an actual metal color sample.

4127-22 Rev. 06.27.24



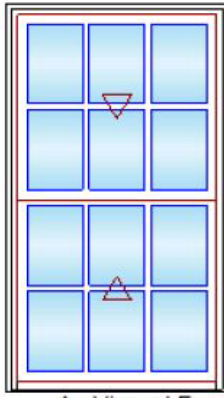
2. Marvin Elevate Double Hung Windows – Ebony Exterior

MARVIN 



As Viewed From The Exterior

MARVIN 



As Viewed From The Exterior



3. Clapboard Siding – 4" Exposure



4. Primed Pine Flat Stock Trim – 1x6

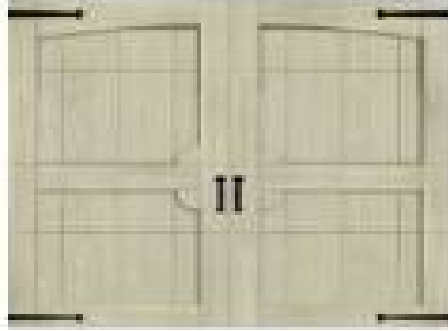


5. White Aluminum K-Style Gutters



6. Clopay Canyon Ridge Carriage House Garage Door – Model CAN237

1. Garage Door



7. Therma-Tru Half-Glass 6 over 6 Entry Door



8. A/C Condenser. Mitsubishi



Size Width 37 13/32 x Height 41 7/16