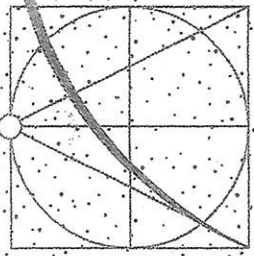


# AUSTIN STREET

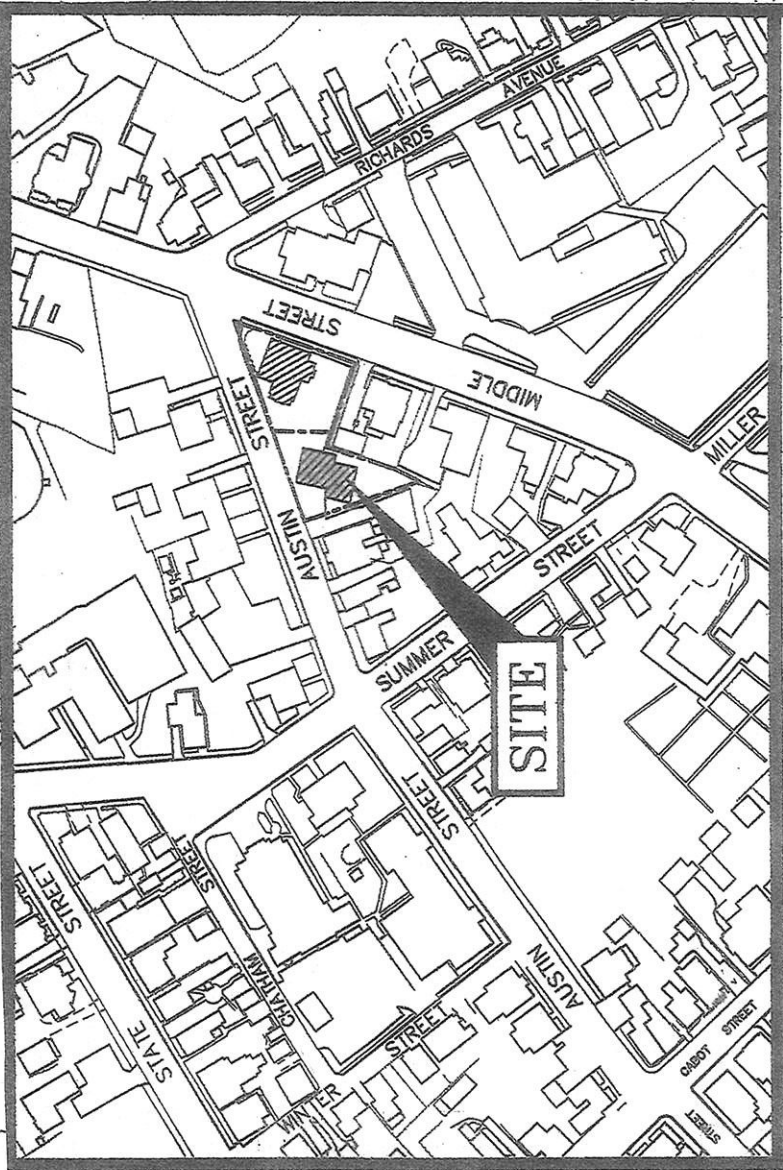
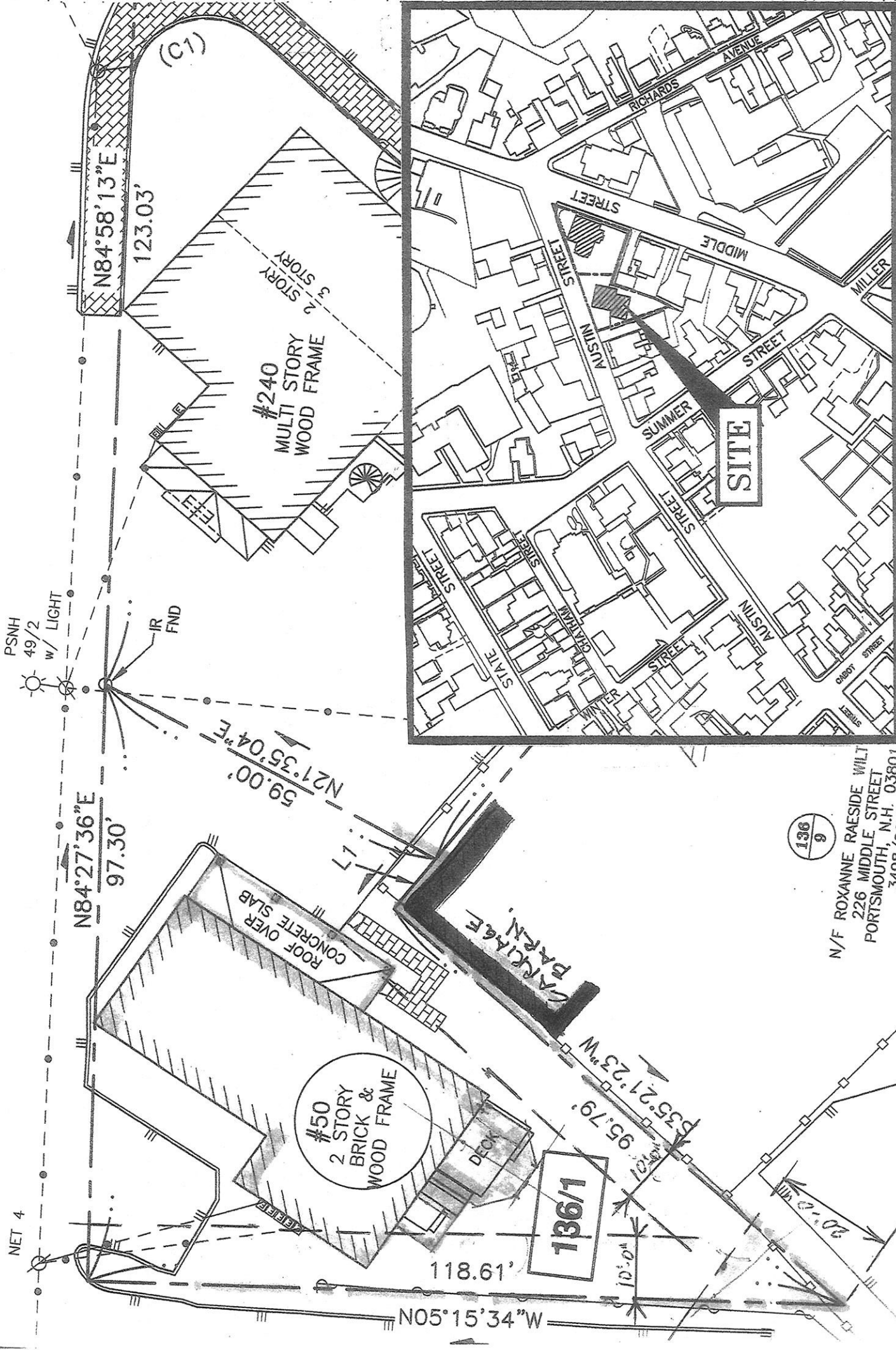


**RAWLING  
DESIGN  
ASSOCIATES**  
DESIGNERS - PLANNERS

411 Middle Street  
Portsmouth NH 03801  
603.430.4013

50 AUSTIN ST.  
PORTSMOUTH, NH  
FIELD OFFICE

01.18.25



136  
9

N/F ROXANNE RAESIDE WILT  
226 MIDDLE STREET  
PORTSMOUTH, N.H. 03801  
3498/2695

1" = 20'-0"

10.521 Table of Dimensional Standards – Residential and Mixed Residential Districts

	R	SRA	SRB	GRA	GRB	GRC	GA/MH	MRO	MRB	50 AVENUE
Minimum Lot Dimensions										
Lot area	5 acres	1 acre	15,000 sf	7,500 sf	5,000 sf	3,500 sf	5 acres	7,500 sf	7,500 sf	62,974
Lot area per dwelling unit	5 acres	1 acre	15,000 sf	7,500 sf	5,000 sf	3,500 sf	10,000 sf	7,500 sf	7,500 sf	62,974
Continuous street frontage	NA	150'	100'	100'	80'	70'	N/A	100'	100'	97.30'
Depth	NA	200'	100'	70'	60'	50'	N/A	80'	80'	119' varies
Minimum Yard Dimensions										
Front	50'	30'	30' <sup>1</sup>	15'	5'	5'	30' <sup>1</sup>	5'	5' <sup>1</sup>	coverage exist
Side	20'	20'	10'	10'	10'	10'	25'	10'	10'	114'
Rear	40'	40'	30'	20'	25'	20'	25'	15'	15'	148'
Maximum Structure Dimensions										
Structure height	35'	35'	35'	35'	35'	35' <sup>2</sup>	35' <sup>2</sup>	40'	40'	Addition -
Roof appurtenance height	8'	8'	8'	8'	8'	8'	8'	10'	10'	244'
Building coverage	5%	10%	20%	25%	30%	35%	20%	40%	40%	27%
Minimum open space	75%	50%	40%	30%	25%	20%	50%	25%	25%	45624

Notes: NA = Not Applicable NR = No Requirement

- See Section 10.533 for special requirements on Lafayette Road.
- Within the General Residence C and Garden Apartment/Mobile Home Park districts an additional 8' of height may be added to the maximum structure height in order to provide for multifamily dwellings that include vehicular parking spaces located within the residential building itself, if the additional height results in increased open space when compared to a site plan showing what open spaces would remain if required parking spaces were located in the open and in accessory structures.





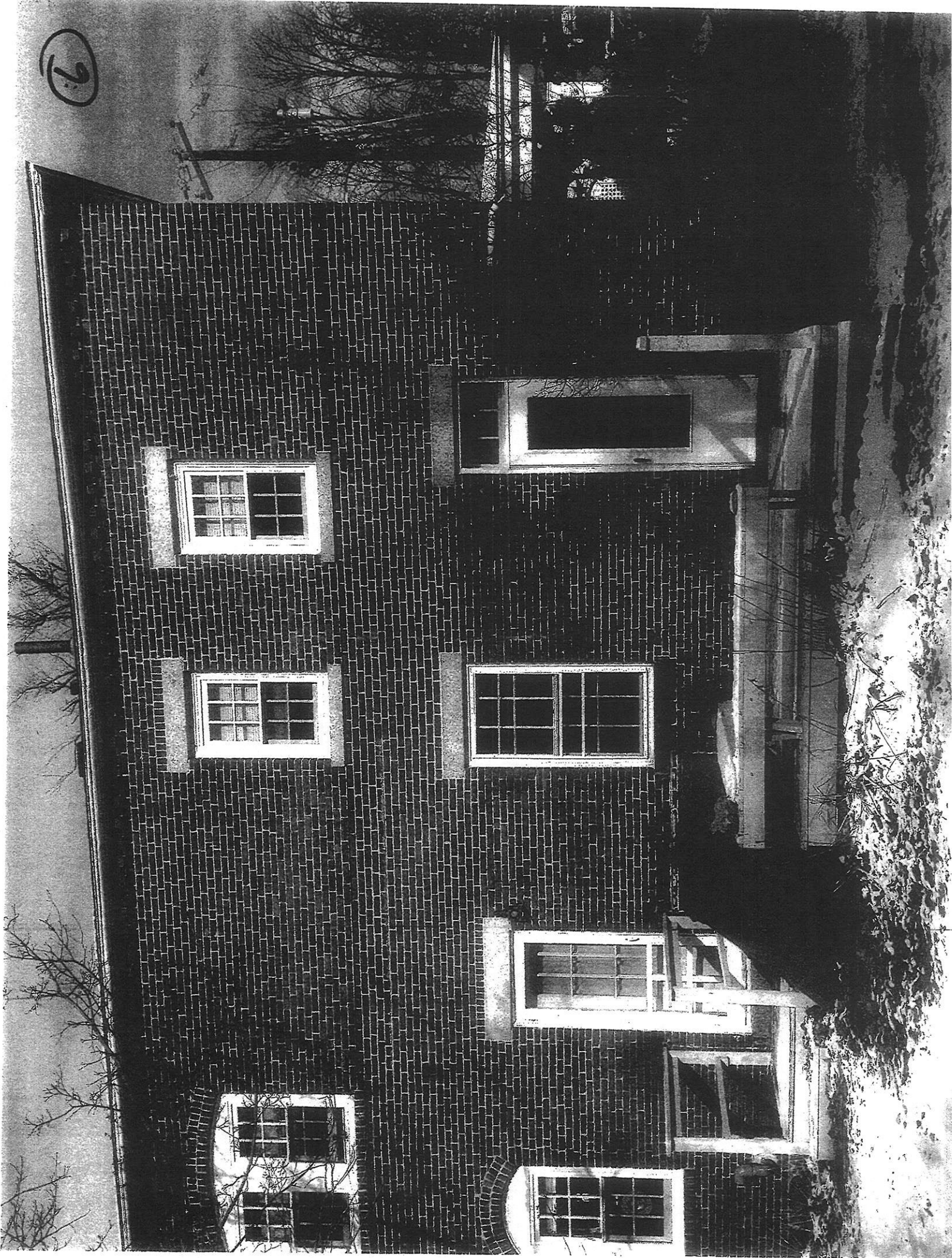








2



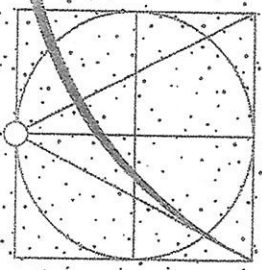




NEW TO MATCH



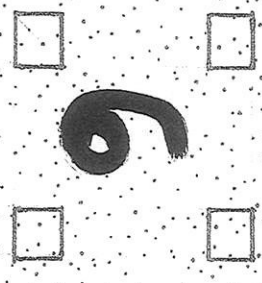




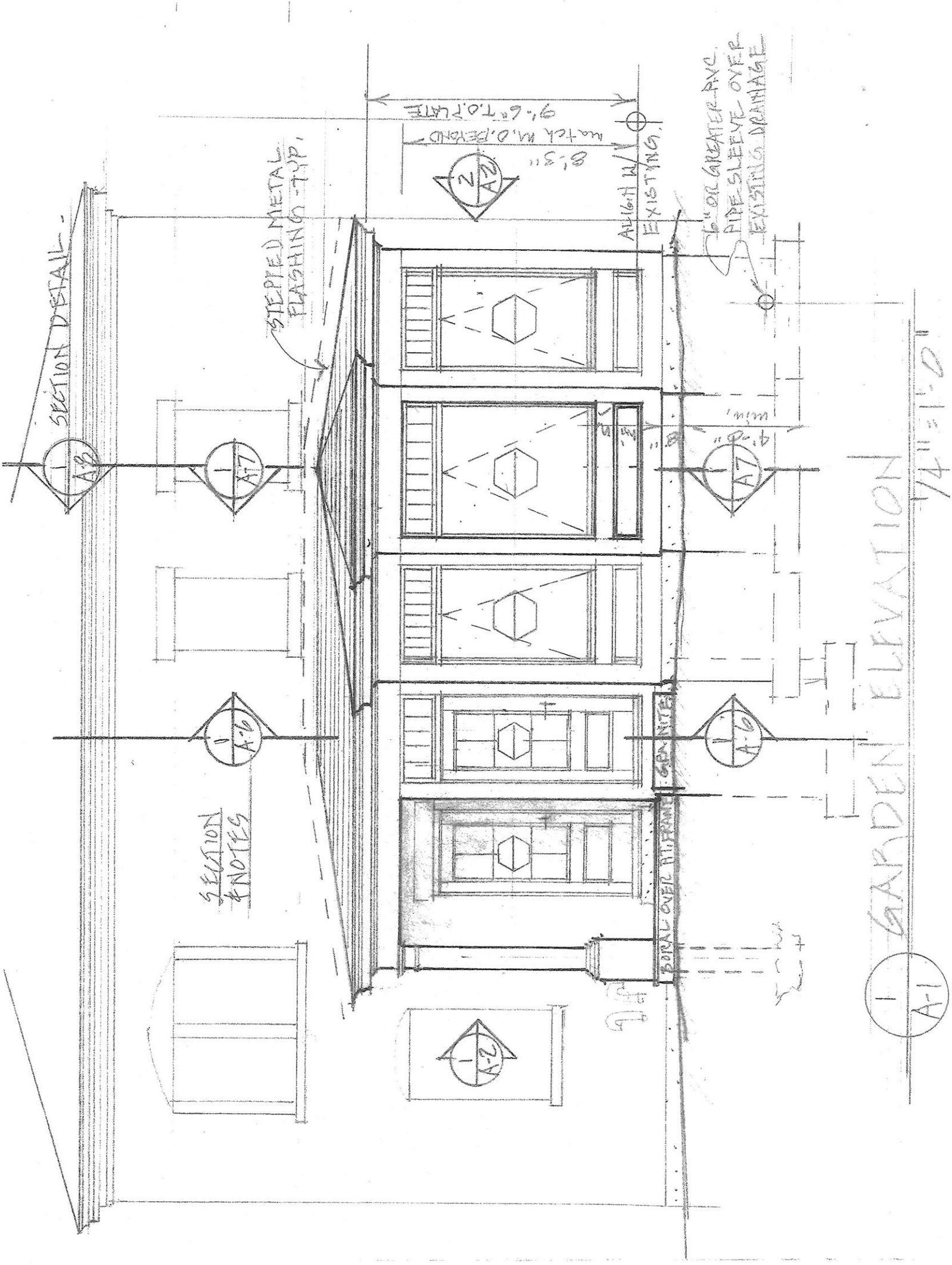
**RAWLING  
DESIGN  
ASSOCIATES**  
DESIGNERS • PLANNERS

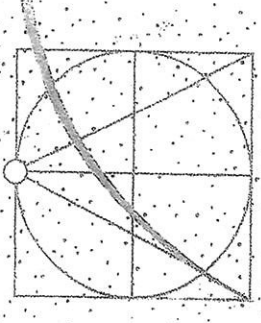
411 Middle Street  
Portsmouth NH 03801  
603.430.4013

50 AUSTIN ST.  
PORTSMOUTH, NH  
ENCLOSURE  
ADDITIONAL PORCH



01.18.25





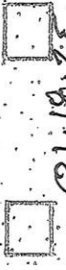
RAWLING  
DESIGN  
ASSOCIATES  
DESIGNERS • PLANNERS

411 Middle Street  
Portsmouth NH 03801  
603.430.4013

50 AUSTIN ST.  
PORTSMOUTH, NH  
ENCLOSURE

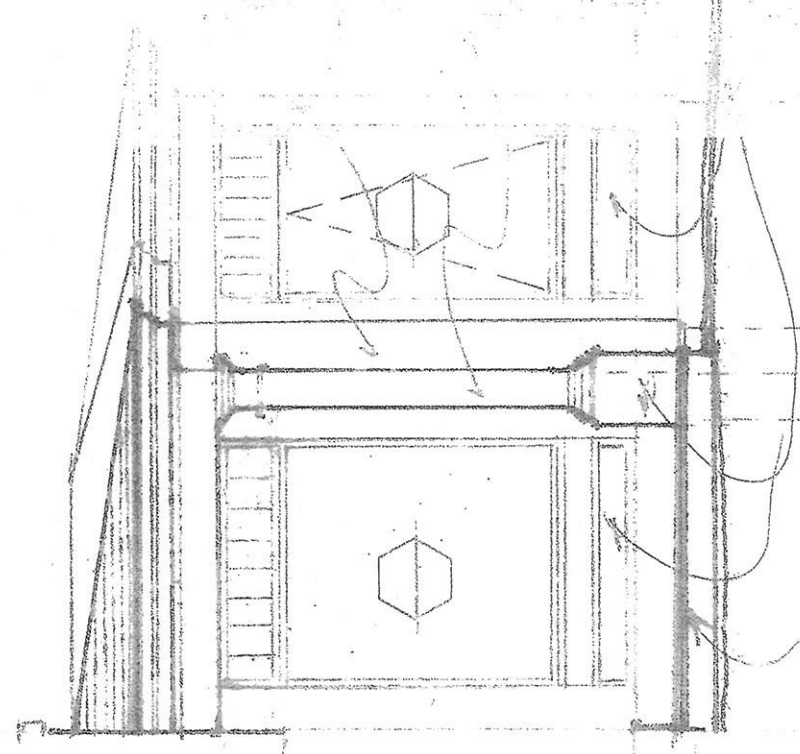
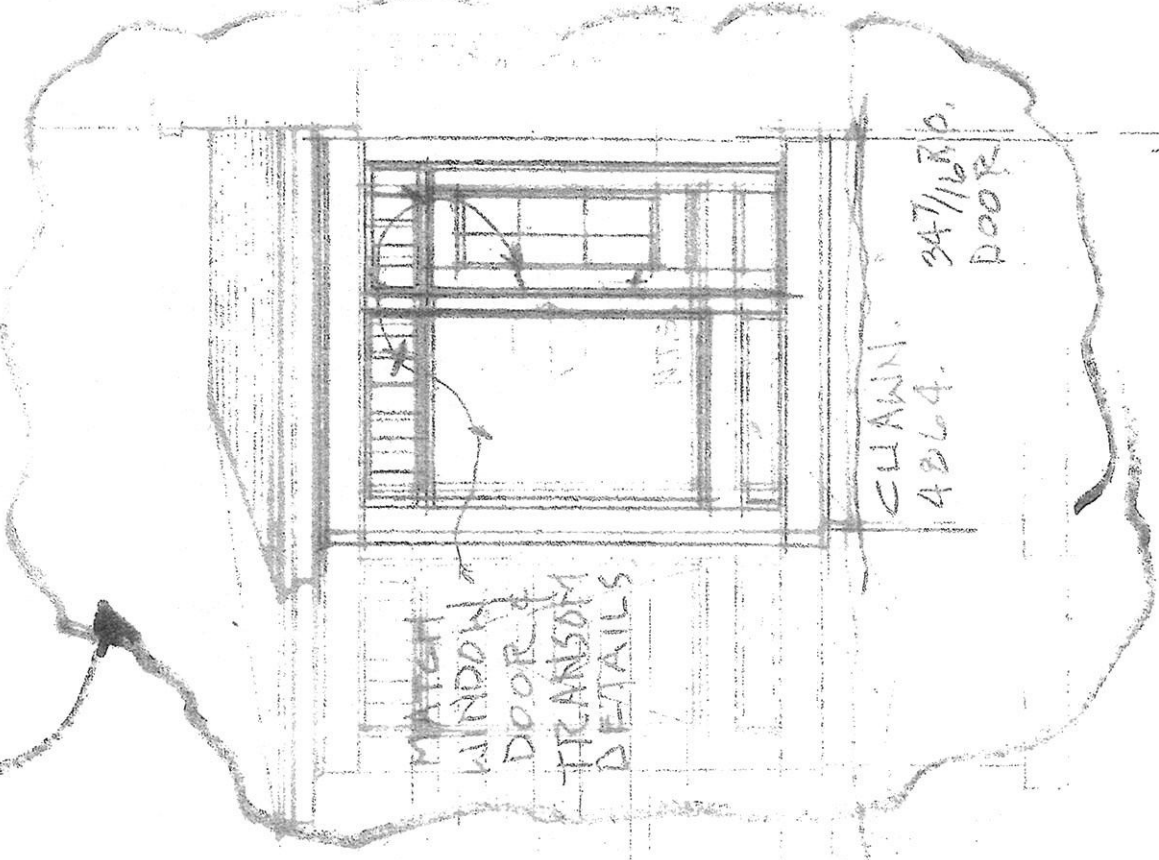


10



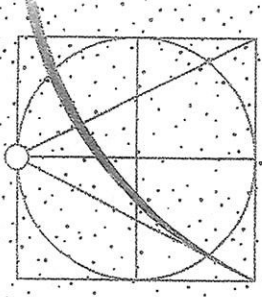
01.18.25

01.18.25  
- DOOR ADDED  
- WINDOW MODIFIED



DOOR ELEVATION





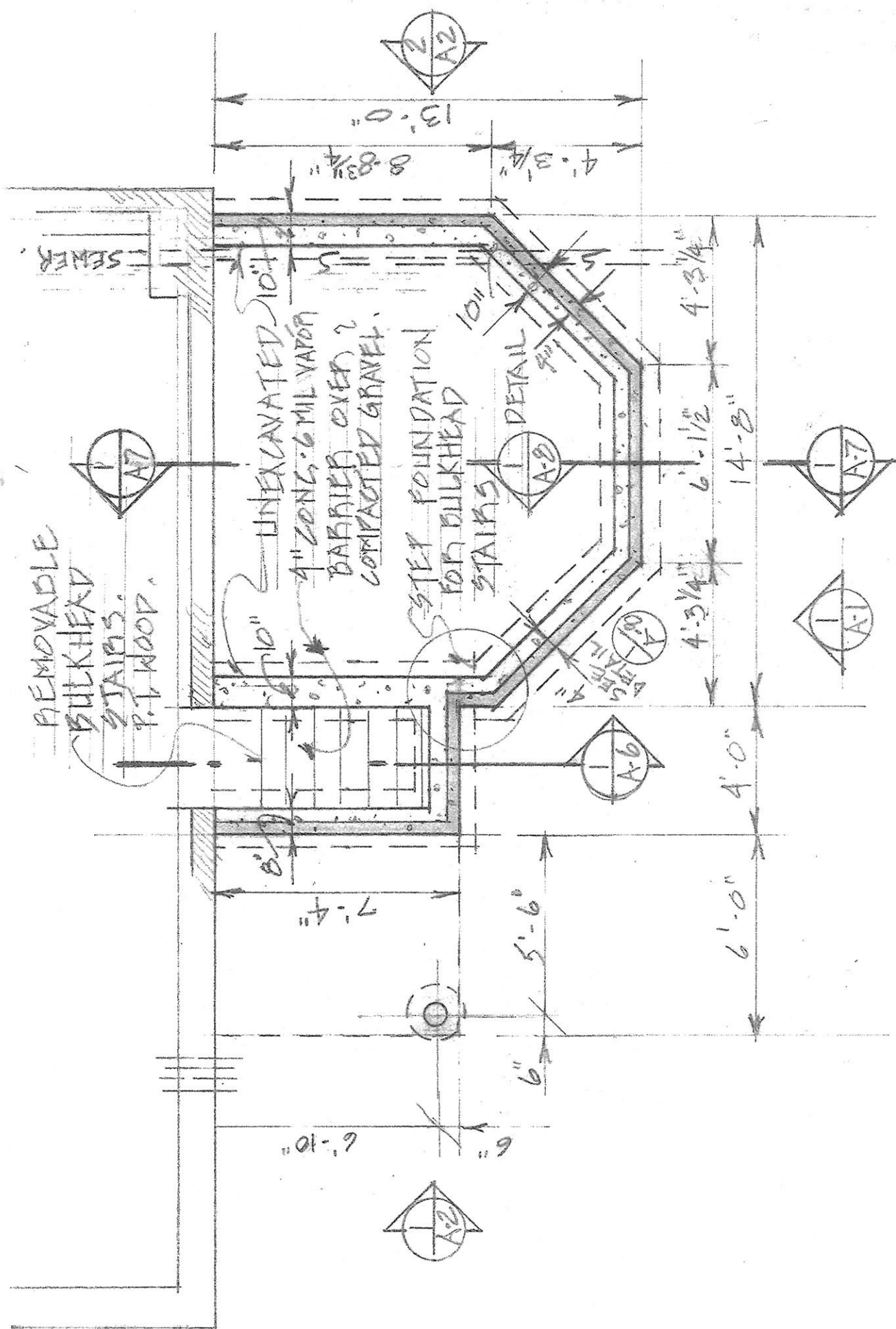
**RAWLING  
DESIGN  
ASSOCIATES**

DESIGNERS • PLANNERS

411 Middle Street  
Portsmouth NH 03801  
603.430.4013

50 AUSTIN ST  
PORTSMOUTH, NH  
ENCL. ADDED FOR CH

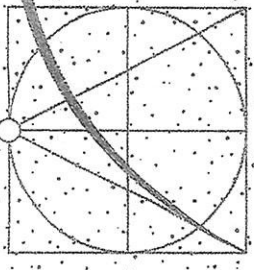
01.18.25



1 FOUNDATION PLAN  
1/4" = 1'-0"







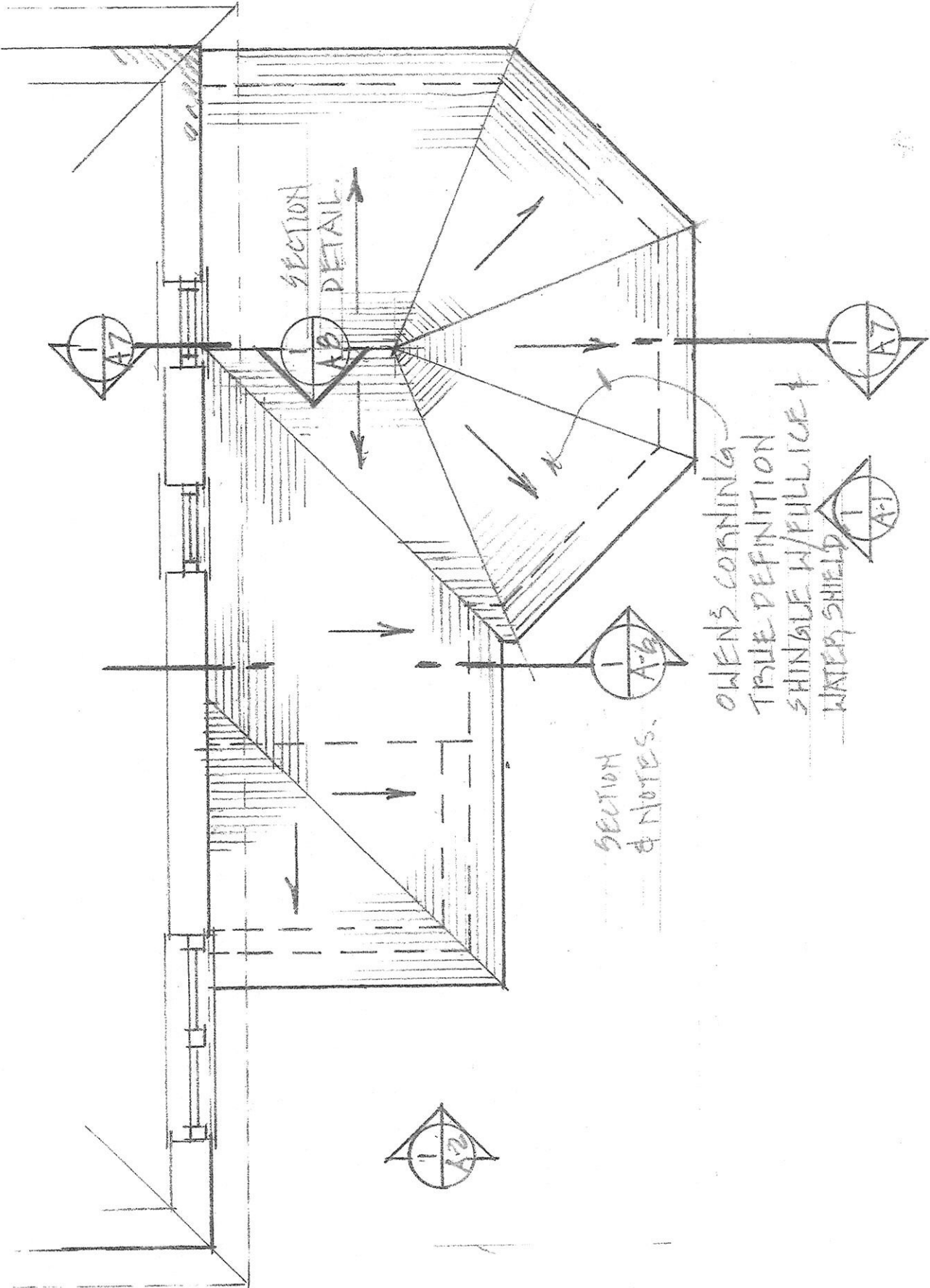
**RAWLING  
DESIGN  
ASSOCIATES**  
DESIGNERS • PLANNERS

411 Middle Street  
Portsmouth NH 03801  
603.430.4013

50 AUSTIN ST.  
PORTSMOUTH, NH  
ENCLOSURE PORCH

13

01.18.25



SECTION  
DETAIL

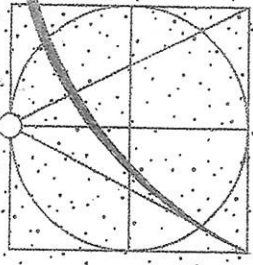
SECTION  
& NOTES

OWEN'S CORNING  
TRUE DEFINITION  
SHINGLE W/FULL ICE  
WATER SHIELD

1 ROOF PLAN

1  
A-5

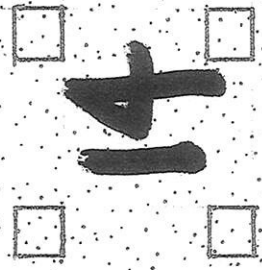
1/4" = 1'-0"



RAWLING  
DESIGN  
ASSOCIATES  
DESIGNERS • PLANNERS

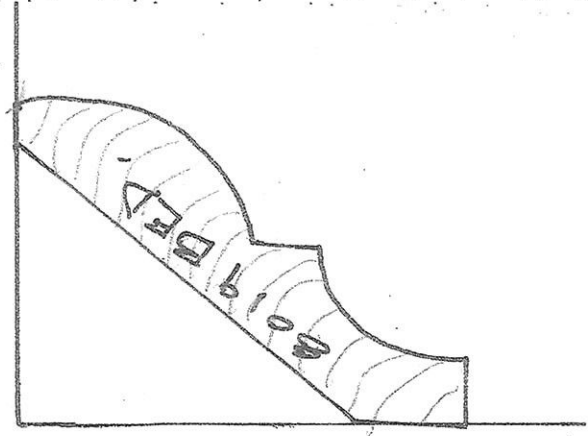
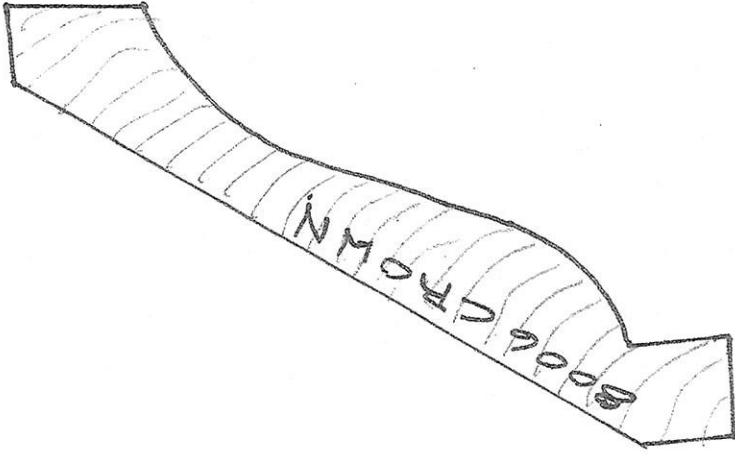
411 Middle Street  
Portsmouth NH 03801  
603.430.4013

50 AUSTIN ST.  
PORTSMOUTH, NH  
ENCLOSURE PORCH



14

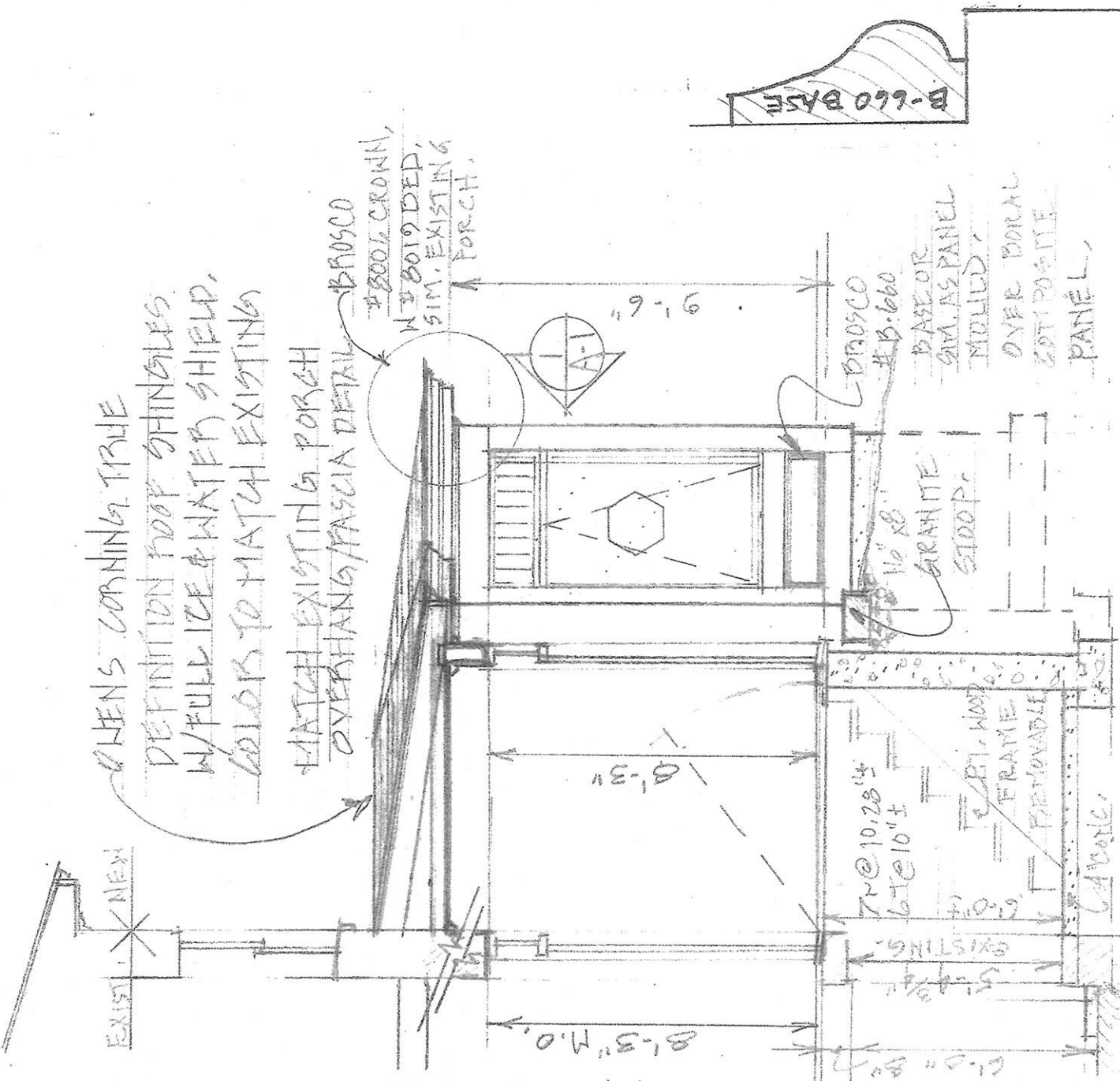
01.18.25



WOMEN'S CORNING TRILE  
DEFINITION ROOF SHINGLES  
W/ FULL ICE & WATER SHIELD,  
COLORS TO MATCH EXISTING

MATCH EXISTING PORCH  
OVERHANG/FASCIA DETAIL

#B-660 CROWN,  
#B-660 SIDING,  
SIM. EXISTING  
PORCH.



(A1a) SECTION THRU BULKHEAD  
1/4" = 1'-0"

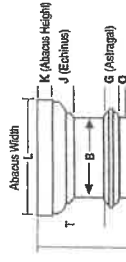
# Round Tapered PERMACast® Columns

COL. SIZE	A	B	C	D	E	F	G	J	K	L	O	N	R	T	LENGTHS AVAILABLE (ft.)
6"	5 1/4"	4 3/8"	9"	1 1/4"	1 1/4"	3/8"	3/4"	1 1/4"	1 3/8"	8"	1"	6 1/4"	3 3/8"	4 1/2"	4.6.8
8"	7 1/8"	6 1/2"	10 1/2"	1 3/4"	1 3/4"	3/4"	3/4"	1 1/2"	1 1/2"	9 1/4"	1 1/2"	2 1/4"	4 1/4"	4 1/2"	5.6.8.10.12
10"	9 1/4"	8 1/8"	13 1/8"	2 1/8"	2 1/8"	3/4"	5/8"	1 1/4"	1 3/4"	11 1/4"	3/4"	2 1/4"	5 1/4"	5"	6.8.10.12.14.16
12"	11 1/4"	9 3/4"	16 1/2"	2 3/4"	2 3/4"	7/8"	5/8"	1 1/2"	2 1/4"	13 3/4"	3/4"	2 3/4"	6 1/4"	5 1/4"	8.10.12.14.16.18.20
14"	13 3/8"	11 1/8"	19 1/2"	3 3/8"	3 3/8"	1 1/4"	1"	2"	2 3/4"	17"	7/8"	2 3/4"	7 1/4"	7"	10.12.14.16.18.20.22.24
16"	15 1/4"	13 1/8"	22"	3 3/4"	3 3/4"	1 1/4"	1 1/4"	2 1/4"	2 3/4"	19 1/4"	1"	3"	8 1/4"	8"	12.14.16.18.20.22.24.26.28
18"	17 1/4"	15 1/8"	24 1/2"	4"	4"	1 1/2"	1 1/4"	2 3/4"	3"	22 1/4"	1 1/4"	10 3/4"	9 1/4"	8 1/4"	14.16.18.20.22.24.26.28.30
20"	19 1/4"	17 1/8"	27"	4 1/2"	4 1/2"	2"	1 3/4"	2 3/4"	3 1/4"	24 1/4"	1 1/2"	10 3/4"	11 1/4"	9"	16.18.20.22.24.26
22"	21 1/4"	19 1/4"	30 1/4"	5"	5"	2 1/4"	2 1/4"	3"	4"	27 1/4"	1 1/2"	10 3/4"	12"	10 1/4"	18.20.22.24.26.28
24"	23 1/4"	21 1/4"	33 1/2"	6"	5 3/4"	2 3/4"	2 3/4"	3 1/4"	4 1/4"	30 3/4"	1 3/4"	10 3/4"	13 1/4"	11 1/4"	20.22.24.26.28
28"	28"	24 3/4"	38"	6 3/4"	6 1/2"	2 3/4"	2 3/4"	4"	4 3/4"	33 3/4"	1 3/4"	10 3/4"	14 1/4"	14 1/4"	20.22.24.26.28
30"	29 1/2"	26 1/2"	41 1/4"	6 3/4"	5 3/4"	2 3/4"	3"	4"	4 3/4"	38 1/4"	1 3/4"	10 3/4"	14 3/4"	14 3/4"	20.22.24.26.28

\*There may be a variance of up to 1/4" in all dimensions. Fluted columns available in all diameters. See page 16 for Parallel dimensions. See page 18 for Decorative Capital dimensions. □ Standard Fluted Column (Fluted in mold)

• Split columns are not load bearing.

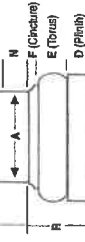
Poly Tuscan Cap



TAPER

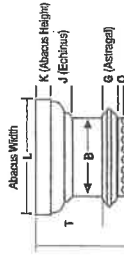
Shaft

NO-TAPER



Poly Tuscan Base Plain Column

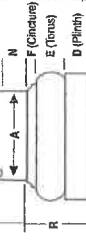
Poly Tuscan Cap



TAPER

Shaft

NO-TAPER



Poly Tuscan Base Fluted Column

## COLUMN-LOC®

Column-Loc® creates a continuous connection from floor to beam/header without the expense of splitting and reattaching the column. This labor saving product is easy to install and delivers wind uplift resistance especially important in coastal and high wind areas. Currently available for 8" and 10" round (tapered) and no-taper) and square PermaCast® columns. Kits are available with and without threaded rod in lengths up to 12.\*



## PLUMB-FIT®

To make installation even easier our 6"-12" round and square poly Tuscan Cap and Base Sets with flashing cap come with the Plumb-Fit® patented (Patent 9689674) installation system included.



## ROUND PERMACAST® PORCH INSTALLATION BRACKET

The HB&G Porch Installation Bracket includes the bracket and all required hardware. The bracket fits 20" - 30" Plain Round PermaCast® Columns and will secure a 2nd story porch to our PermaCast® Columns. Three brackets are required for each column.

## ROUND PERMACAST® INSIDE DIMENSIONS



Inside dimension may vary up to 1/8". Splitting a column will decrease inside dimension 1/8".

COLUMN SIZE	TOP I.D.	BOT I.D.
6"	3 3/4"	4 1/8"
8"	5 1/4"	6 1/8"
10"	7 1/4"	8 1/8"
12"	8 3/4"	10 1/8"
14"	10 1/4"	12 1/8"
16"	12 1/4"	15"
18"	14 1/4"	16 1/8"
20"	16 1/4"	18 1/8"
22"	18 1/4"	20 1/8"
24"	20"	22 1/8"
28"	22 1/4"	26 1/8"
30"	25 1/4"	28 1/8"

\*Plain columns only

14  
05.23.20

13



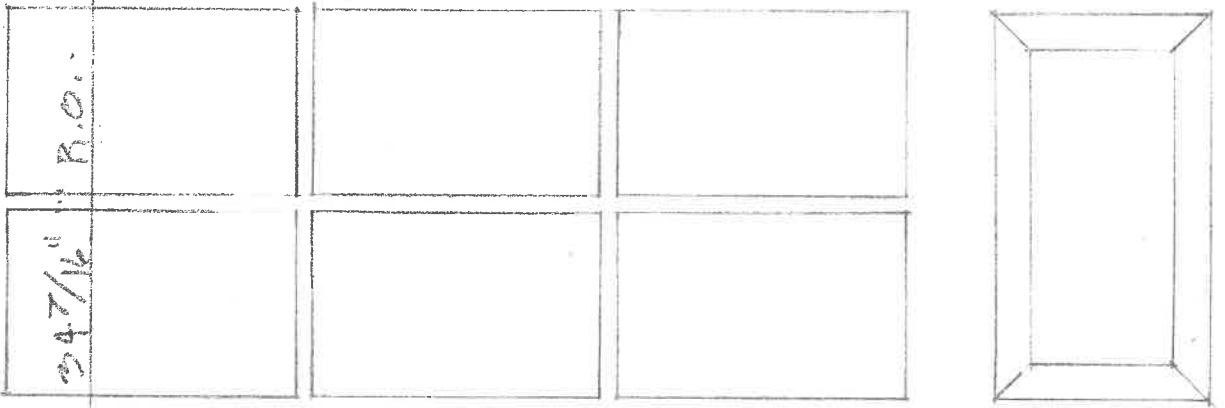
51

262-50

THIRMA-TRU FIBER GLASS - 5DLW/GBS  
LEAF GLASS - SIMULATED DIVIDED LIGHTS W/ BRONZE  
GRILLES BETWEEN GLASS CONTROL MULTIPANE

49 23/64 D.L.O.  
62 1/2" R.O.

21 19/32" D.L.O.

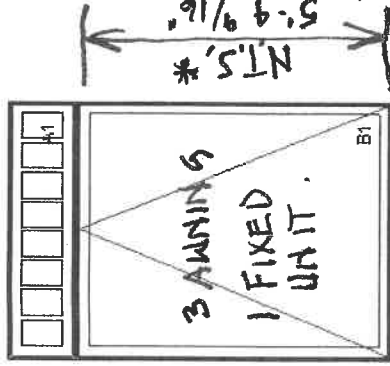


54 7/16" R.O.



# BAY & COVERED PORCH.

Maheer, Sky  
 awnings  
 Quote Number: GMEJTYH



As Viewed From The Exterior

Entered As: Size by Units  
 RO 61" X ~~66-3/4"~~  
 Egress Information A1, B1  
 No Egress information available.

**B1 - AWNINGS**  
**WUAWN 7264F**  
**6064T.**

**\* REPRESENTATIONAL**  
**DIAGRAM - UNIT**  
**MODIFIED LENGTH &**  
**OPERATIONS TO**  
**1 FIXED UNIT.**

- 1W2H - Rectangle Assembly  
 Assembly Rough Opening  
 61" X 86 3/4"
- Unit: A1
- Ultimate Awning - Stationary  
 CN 6016
- Rough Opening 61" X 15 5/8"
- Frame Size 60" X 15 1/8"
- Stone White Clad Sash Exterior
- Painted Interior Finish - White - Pine Sash Interior  
 IG - 3/4"
- Low E2
- Capillary Tube
- Stainless Perimeter and Spacer Bar
- 7/8" SDL - With Spacer Bar - Stainless
- Rectangular - Special Cut 8W1H
- Stone White Clad Ext - Painted Interior Finish - White - Pine Int
- Ogee Interior Glazing Profile
- Standard Bottom Rail
- White Weather Strip
- Solid Wood Covers

- Unit: B1
- Ultimate Awning - Roto Operating  
 CN 6072
- Rough Opening 61" X ~~72-5/8"~~
- Frame Size 60" X ~~72-1/8"~~
- Stone White Clad Sash Exterior
- Painted Interior Finish - White - Pine Sash Interior  
 IG - 1 in - 1 Lite
- Tempered Low E2 w/Argon
- Stainless Perimeter Bar
- Ogee Interior Glazing Profile
- Standard Bottom Rail
- White Weather Strip
- Matte Black Folding Handle
- Matte Black Multi - Point Lock
- Aluminum Screen
- White Surround
- Charcoal Hi-Transparency Fibrgls Mesh
- Standard Mull Charge
- 6 9/16" Jamb
- AL Nailing Fin
- \*\*\*Note: This configuration meets a minimum structural performance of DP 20 through either physical testing or calculations in accordance with AAMA 450 and building code requirements. Mull certification ratings may vary from individual unit certification ratings. Reference the mulling chapter of the ADM for additional information.
- \*\*\*Note: Capillary tubes will be added to ALL Low E glass types without Argon.
- \*\*\*Note: Unit Availability and Price is Subject to Change

Line #5	Mark Unit:
Qty: 1	



- Stone White Clad Exterior
- Painted Interior Finish - White - Pine Interior
- Ultimate Inswing French Door 4 9/16" - X Left Hand  
 CN 2868
- Rough Opening 34 7/16" X 82 1/2"
- Traditional Panels
- Stone White Clad Sash Exterior
- Painted Interior Finish - White - Pine Sash Interior  
 IG
- Tempered Low E2 w/Argon
- Stainless Perimeter and Spacer Bar
- 7/8" SDL - With Spacer Bar - Stainless
- Rectangular - Special Cut 3W3H
- Stone White Clad Ext - Painted Interior Finish - White - Pine Int
- Ogee Interior Glazing Profile
- Stamped Raised Panel Visible Panel Height 12 1/64"

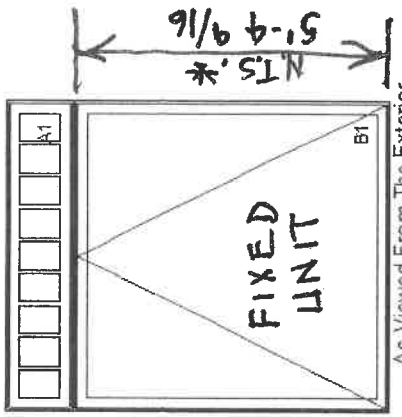
17  
 05.23.20



**LINE ITEM QUOTES**

The following is a schedule of the windows and doors for this project. For additional unit details, please see Line Item Quotes. Additional charges, tax or Terms and Conditions may apply. Detail pricing is per unit.

Line #3	Mark Unit: <del>5</del> mullered unit		
Qty: 1			



As Viewed From The Exterior

Entered As: Size by Units  
 RO 73" X ~~66-3/4~~  
 Egress Information A1, B1  
 No Egress Information available.

- Stone White Clad Exterior
- Painted Interior Finish - White - Pine Interior
- 1W2H - Rectangle Assembly
- Assembly Rough Opening 73" X ~~66-3/4~~
- Unit: A1
- Ultimate Awning - Stationary
- CN 7216
- Rough Opening 73" X 15 5/8"
- Frame Size 72" X 15 1/8"
- Stone White Clad Sash Exterior
- Painted Interior Finish - White - Pine Sash Interior
- IG - 3/4"
- Low E2
- Capillary Tube
- Stainless Perimeter and Spacer Bar
- 7/8" SDL - With Spacer Bar - Stainless
- Rectangular - Special Cut 9W1H
- Stone White Clad Ext - Painted Interior Finish - White - Pine Int
- Ogee Interior Glazing Profile
- Standard Bottom Rail
- White Weather Strip
- Solid Wood Covers

**FIXED LIMIT**  
**7264T.**  
**\* REPRESENTATIONAL**  
**DIAGRAM - B1 UNIT**  
**MODIFIED LENGTH &**  
**OPERATION TO FIXED.**

- Unit: B1
- Ultimate Awning - Roto Operating
- CN 7272
- Rough Opening 73" X ~~66-3/4~~ **5'-4 9/16"**
- Frame Size 72" X 15 1/8"
- Stone White Clad Sash Exterior
- Painted Interior Finish - White - Pine Sash Interior
- IG - 1 in - 1 Lite
- Tempered Low E2 w/Argon
- Stainless Perimeter Bar
- Ogee Interior Glazing Profile
- Standard Bottom Rail
- White Weather Strip
- Matte Black Folding Handle
- Matte Black Multi - Point Lock
- Aluminum Screen
- White Surround
- Charcoal Hi-Transparency Fbrgls Mesh
- Standard Mull Charge
- 6 9/16" Jamb
- AL Nailing Fin
- \*\*\*Note: This configuration meets a minimum structural performance of DP 20 through either physical testing or calculations in accordance with AAMA 450 and building code requirements. Mull certification ratings may vary from individual unit certification ratings. Reference the mulling chapter of the ADM for additional information.
- \*\*\*Note: Capillary tubes will be added to ALL Low E glass types without Argon.
- \*\*\*Note: Unit Availability and Price is Subject to Change

Line #4	Mark Unit: <del>5</del> mullered unit		
Qty: 4			

Stone White Clad Exterior  
 Painted Interior Finish - White - Pine Interior

18  
 05.23.20