

111 STATE STREET ADDITION & RENOVATION

REVISIONS TO PREVIOUSLY APPROVED APPLICATION -
Response to Planning Department As-Built Compliance Review

1. Shaefe Street
 - A. Windows at gable valley are larger and 6/3 lites instead of 1/1 lites.
 - B. Shed dormer eave was raised 7", eave wall pushed forward 4"
 - C. Rear service door is flat with two lights instead of solid 6 panel.
2. State Street
 - A. Main entry door sidelites are glass instead of wood panel.
 - B. Gable dormers trim is wider.
3. Chapel Street
 - A. Side door transom is 4 lites instead of 5; with wider pilaster trim - to match original historic conditions.
 - B. The two porch doors changed from 6 panel to 4 panel, with 2 lites each instead of one. The north porch door changed from 3'-0" wide to 3'-6" wide.
4. Fiber cement clapboard siding is wood grain instead of smooth texture.

The following non-complying item has been rectified:

- Half-round transom over door at State street - brickmold trim added to sash frame, sribed to match radius of brick arch.

The following non-complying items will be corrected to match previously approved drawings:

- Sliding east storefronts at State Street facade
- Frieze board under gable eave returns
- Crown molding at fascias, Chapel Street and Sheafe Street roofs.
- Vertical trim board under gable return, Sheafe street



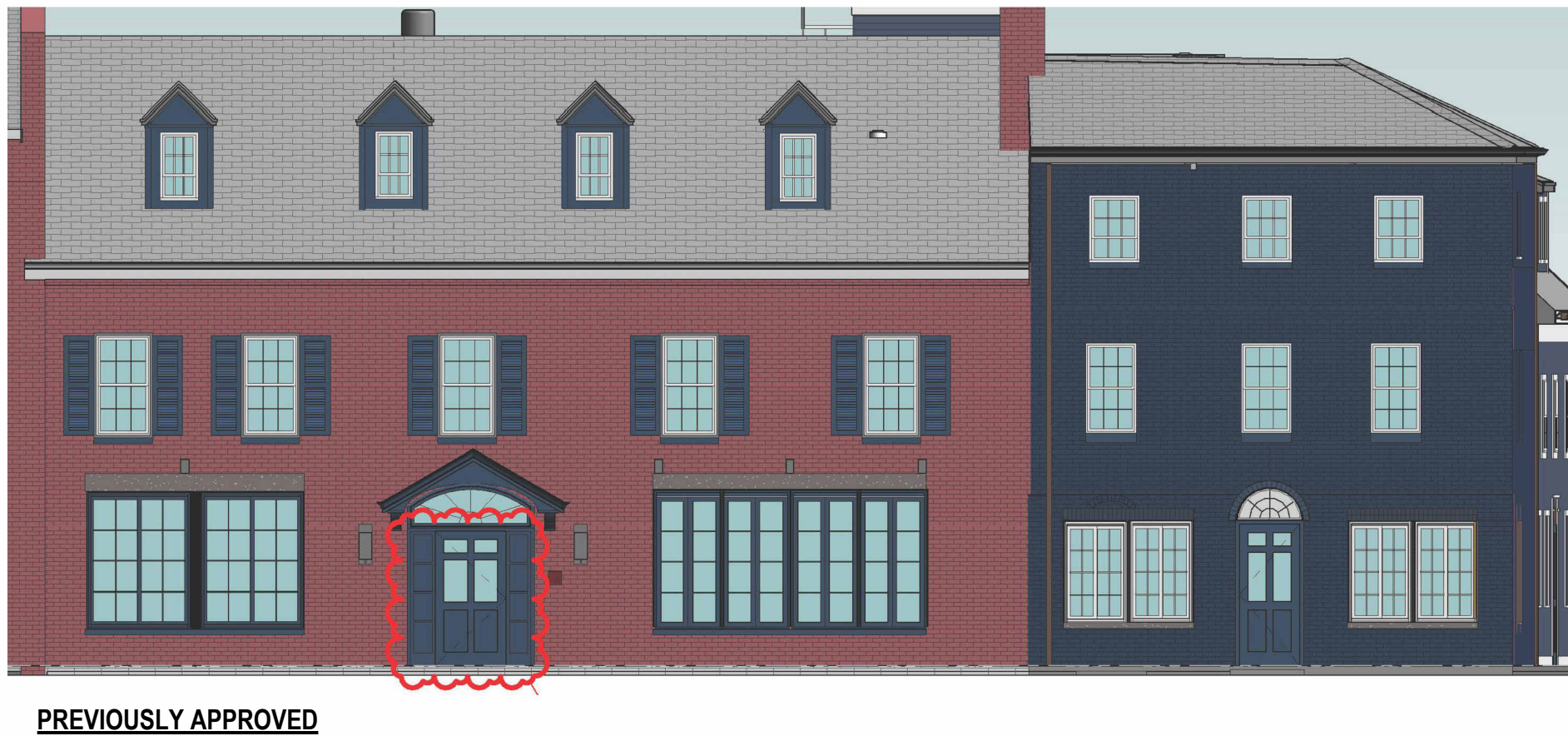
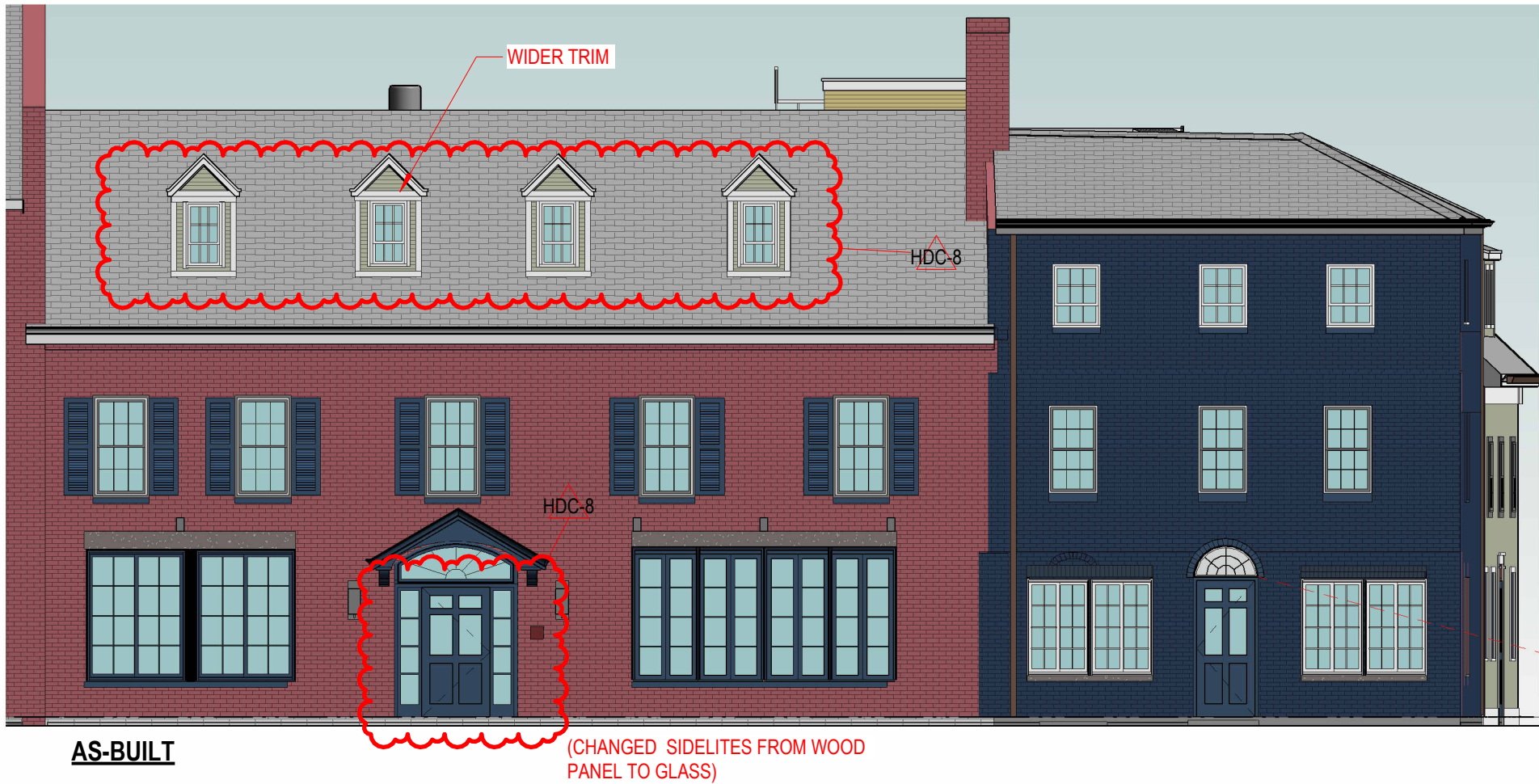
COVENTRY REALTY, LLC

**HDC- Revision 8
PUBLIC HEARING
MAY 2025**

DRAWING LIST
H0.1 COVER
H2.1 STATE ST ELEVATION
H2.4 SHEAFE STREET ELEVATION
H2.5 CHAPEL ST ELEVATION

H0.1 **COVER**
111 STATE STREET
SCALE:
04/17/2025

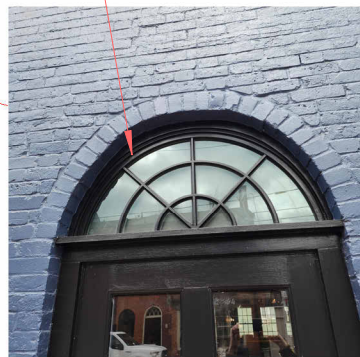




AS-BUILT

Transom installation improved
(work is complete)

Storefronts will be replaced to match
previously approved design.



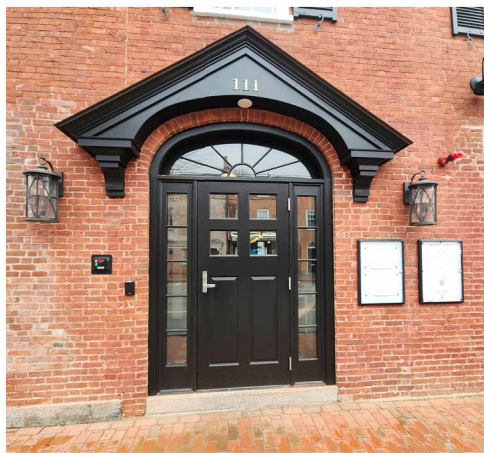
AS-BUILT 4/16/2025



ORIGINAL EXISTING



AS-BUILT

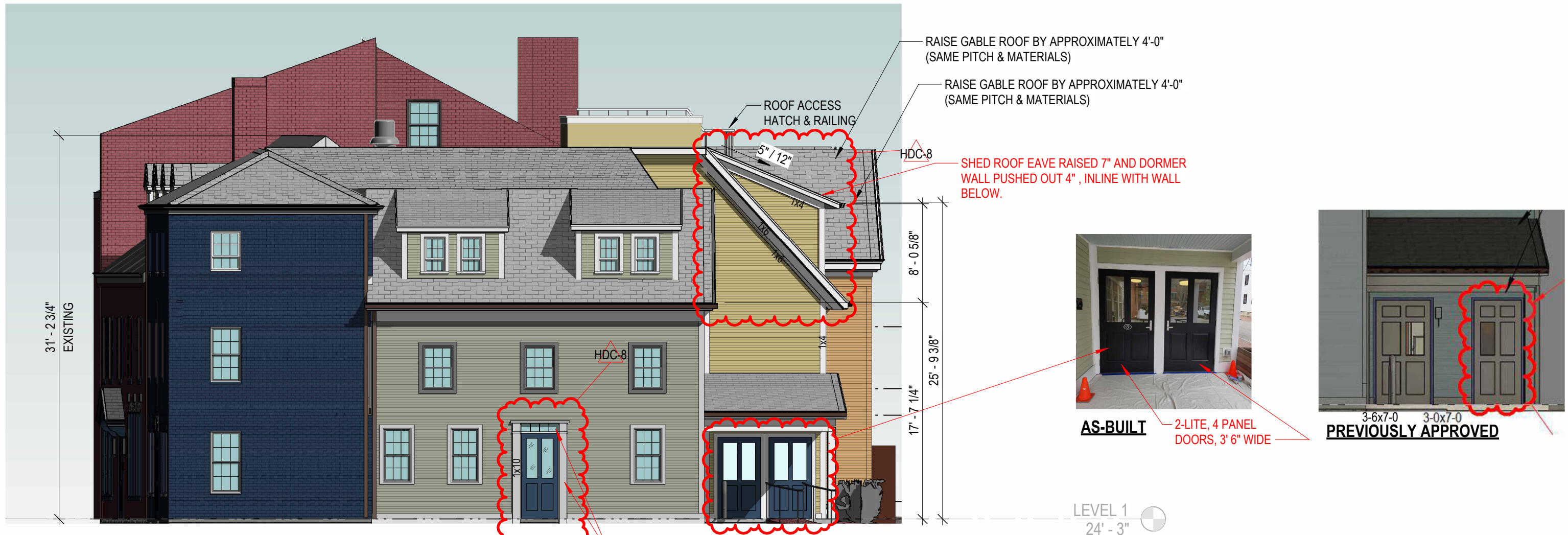


AS-BUILT

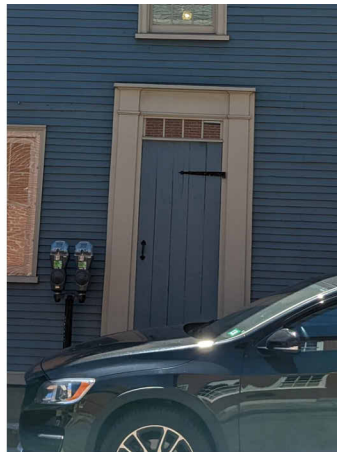
H2.1

STATE STREET ELEVATION 111 STATE STREET

SCALE: 1/8" = 1'-0"
04/17/2025



PROPOSED



PREVIOUSLY EXISTING



PREVIOUSLY APPROVED



AS-BUILT

H2.5

CHAPEL STREET ELEVATION 111 STATE STREET

SCALE: 1/8" = 1'-0"
04/17/2025