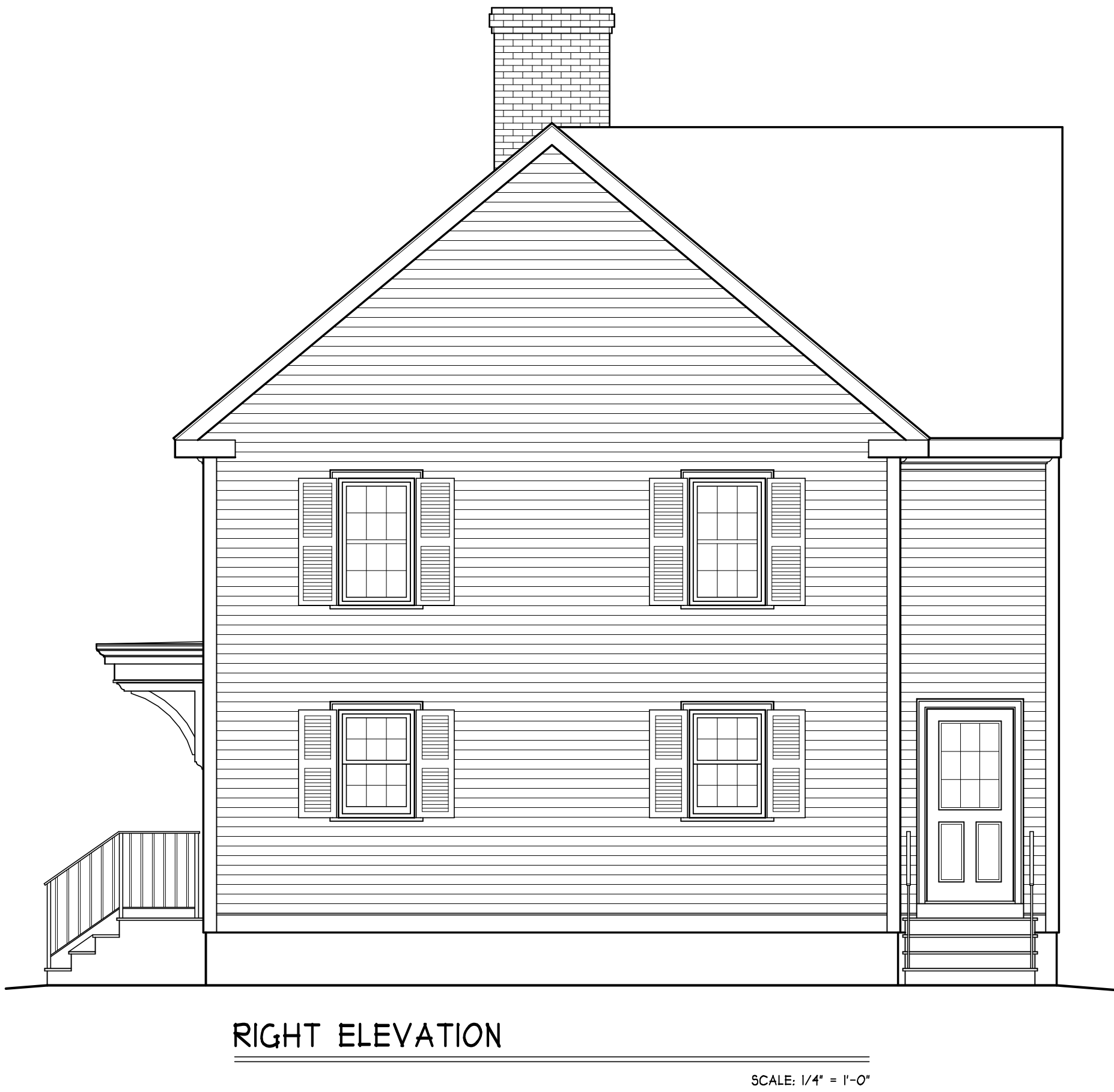




REVISIONS			
NO.	DATE	REVISION	
1	4/30/25	DEVELOPMENT OF PROPOSED PLAN	
2	8/13/25	DEVELOPMENT OF PROPOSED PLAN	

ELEVATIONS

RENOVATION  
10 DEARBORN STREET  
PORTSMOUTH, NH



SQUARE FOOTAGE TABLE	
TOTALS EXCLUDE GARAGE, OPEN AREAS, + UNFINISHED STORAGE AREAS	
PLAN	SQ. FTG.
FIRST FLOOR	1234
SECOND FLOOR	1234
BASEMENT FLOOR	900
TOTAL:	3348

NOTE:  
SQUARE FOOTAGE INCLUDES ALL  
WALL STRUCTURE, LIVING SPACE,  
CLOSETS, + STAIRS, HOWEVER, DOES  
NOT INCLUDE GARAGE SPACE, DECKS,  
OR PATIO'S.

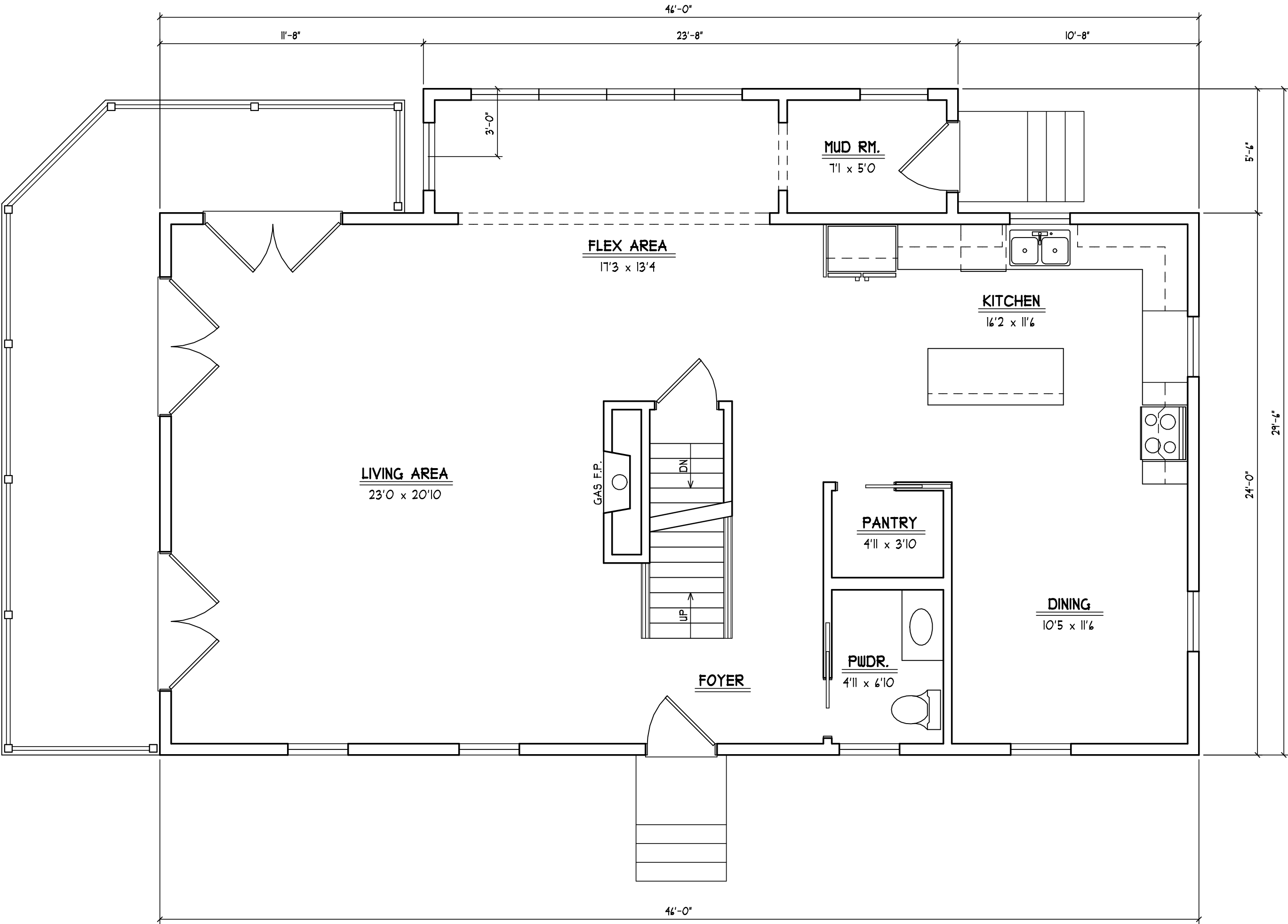




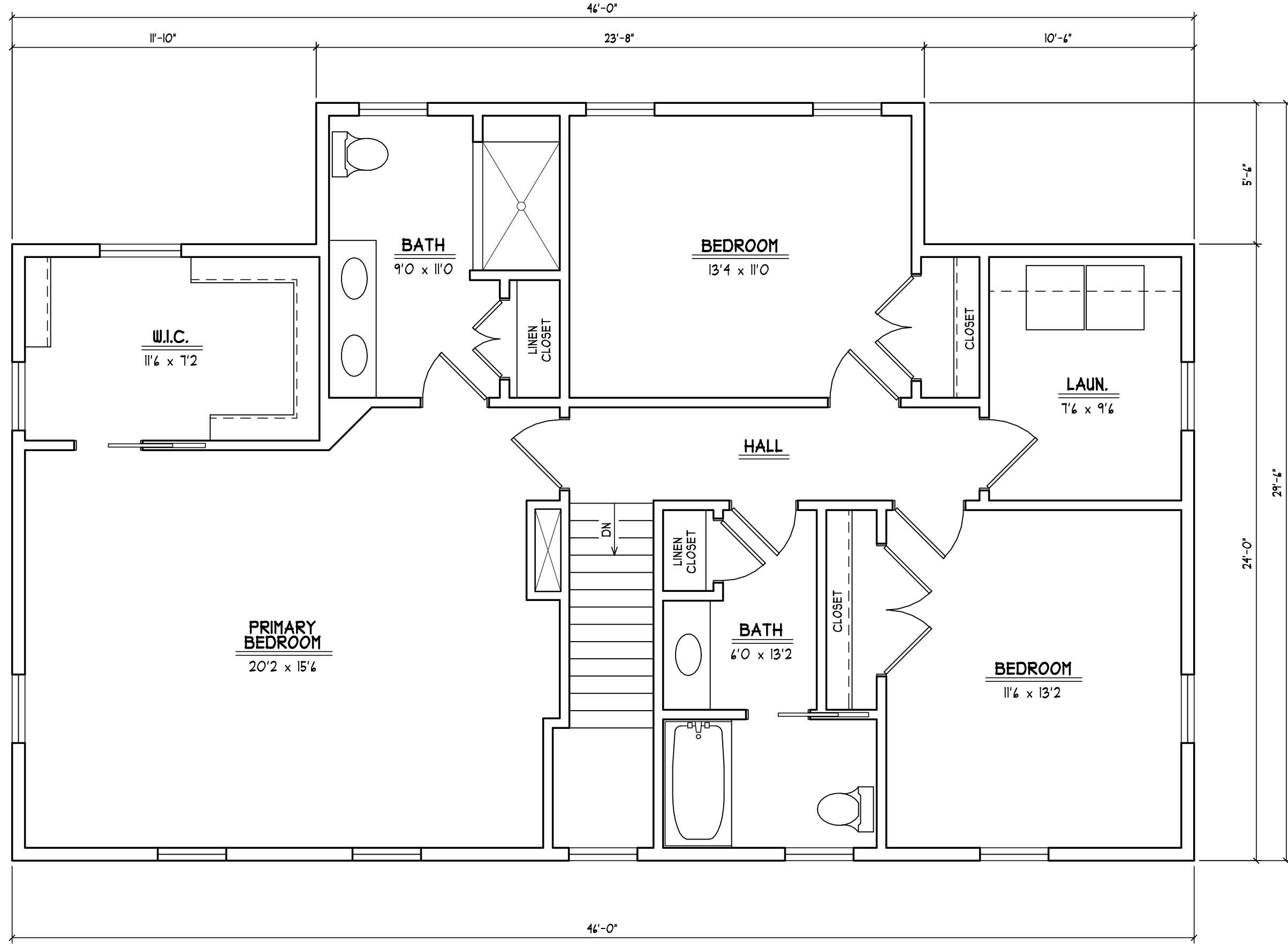
REVISIONS		
NO.	DATE	REVISION
1	4/30/25	DEVELOPMENT OF PROPOSED PLAN
2	8/13/25	DEVELOPMENT OF PROPOSED PLAN

FLOOR PLANS

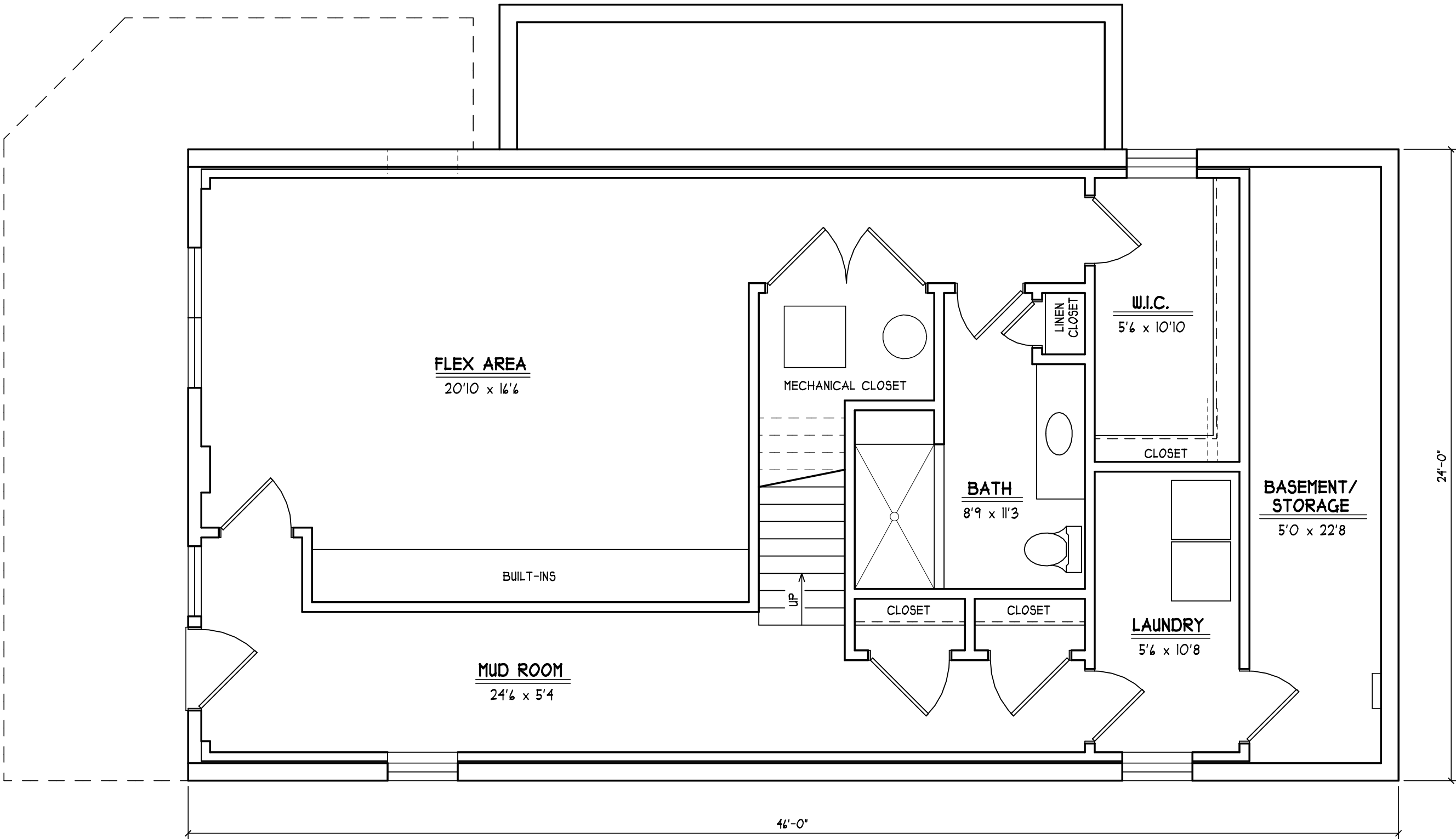
RENOVATION  
10 DEARBORN STREET  
PORTSMOUTH, NH



FIRST FLOOR PLAN  
APPROX. 1,234 SQ. FT.  
SCALE: 1/4" = 1'-0"



SECOND FLOOR PLAN  
APPROX. 1,234 SQ. FT.  
SCALE: 1/4" = 1'-0"

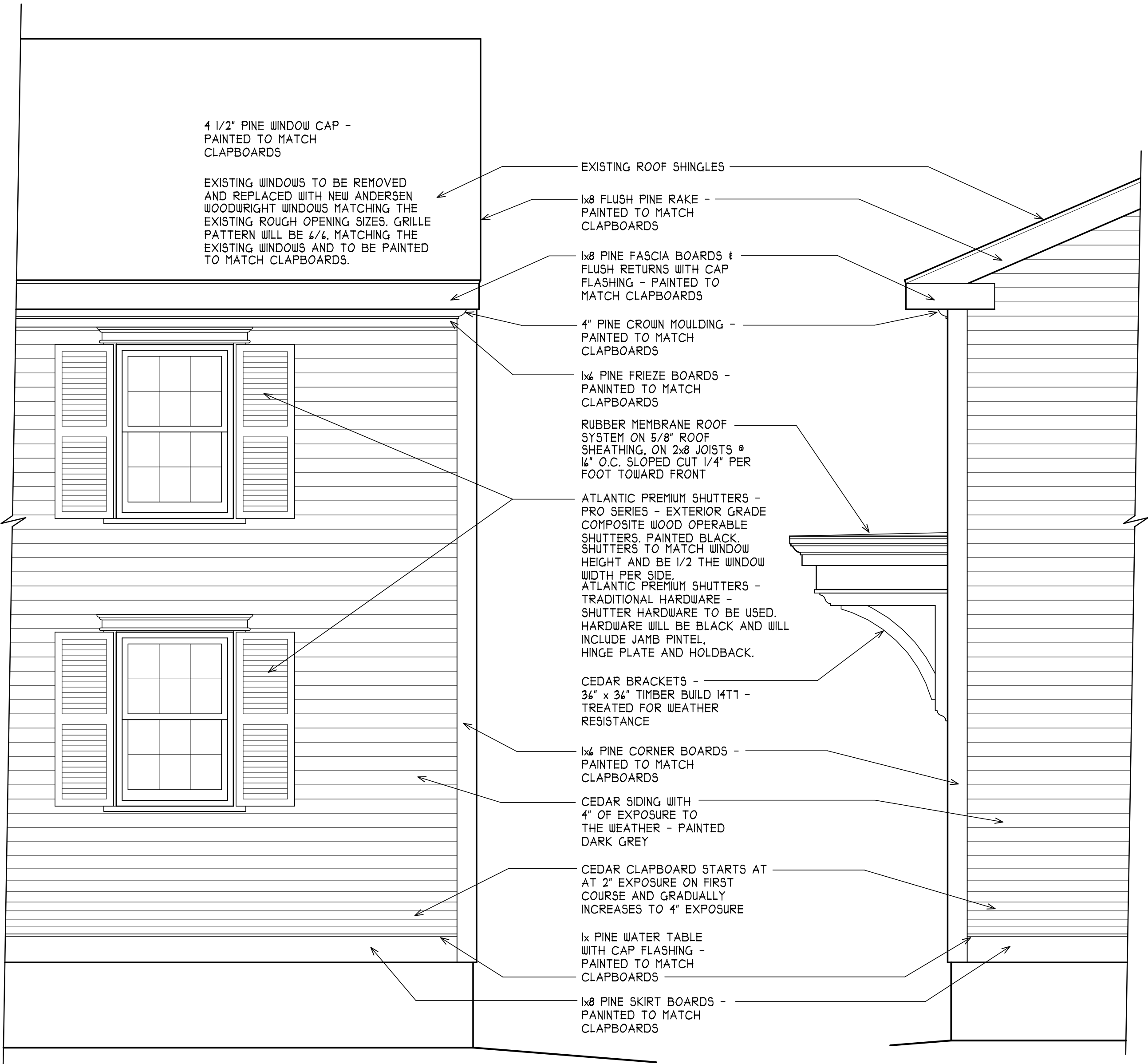


BASEMENT FLOOR PLAN  
APPROX. 900 SQ. FT.  
SCALE: 1/4" = 1'-0"



FRONT ELEVATION

SCALE: 1/4" = 1'-0"



4 1/2" PINE WINDOW CAP -  
PAINTED TO MATCH  
CLAPBOARDS

EXISTING WINDOWS TO BE REMOVED  
AND REPLACED WITH NEW ANDERSEN  
WOODRIGHT WINDOWS MATCHING THE  
EXISTING ROUGH OPENING SIZES. GRILLE  
PATTERN WILL BE 1/4" MATCHING THE  
EXISTING WINDOWS AND TO BE PAINTED  
TO MATCH CLAPBOARDS.

EXISTING ROOF SHINGLES

1x8 FLUSH PINE RAKE -  
PAINTED TO MATCH  
CLAPBOARDS

1x8 PINE FASCIA BOARDS (1  
FLUSH RETURNS WITH CAP  
FLASHING - PAINTED TO  
MATCH CLAPBOARDS

4" PINE CROWN MOULDING -  
PAINTED TO MATCH  
CLAPBOARDS

1x4 PINE FRIEZE BOARDS -  
PAINTED TO MATCH  
CLAPBOARDS

RUBBER MEMBRANE ROOF  
SYSTEM ON 5/8" ROOF  
SHEATHING, ON 2x8 JOISTS @  
16" O.C. SLOPED CUT 1/4" PER  
FOOT TOWARD FRONT

ATLANTIC PREMIUM SHUTTERS -  
PRO SERIES - EXTERIOR GRADE  
COMPOSITE WOOD OPERABLE  
SHUTTERS. PAINTED BLACK.  
SHUTTERS TO MATCH WINDOW  
HEIGHT AND BE 1/2 THE WINDOW  
WIDTH PER SIDE.

ATLANTIC PREMIUM SHUTTERS -  
TRADITIONAL HARDWARE -  
SHUTTER HARDWARE TO BE USED.  
HARDWARE WILL BE BLACK AND WILL  
INCLUDE JAMB PINTEL,  
HINGE PLATE AND HOLDBACK.

CEDAR BRACKETS -  
3 1/2" x 3 1/2" TIMBER BUILD 14T1 -  
TREATED FOR WEATHER  
RESISTANCE

1x4 PINE CORNER BOARDS -  
PAINTED TO MATCH  
CLAPBOARDS

CEDAR SIDING WITH  
4" OF EXPOSURE TO  
THE WEATHER - PAINTED  
DARK GREY

CEDAR CLAPBOARD STARTS AT  
AT 2" EXPOSURE ON FIRST  
COURSE AND GRADUALLY  
INCREASES TO 4" EXPOSURE

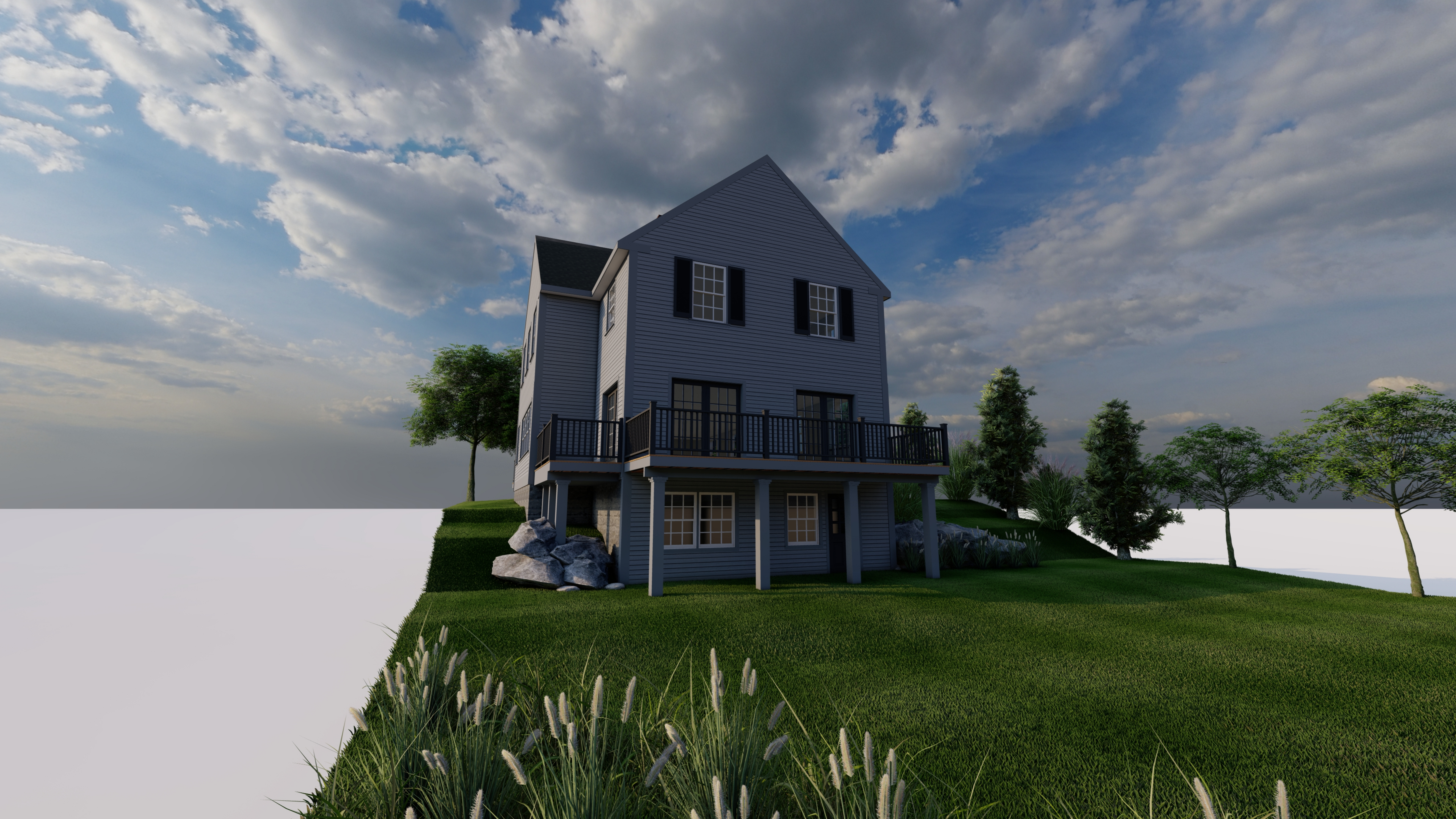
1x PINE WATER TABLE  
WITH CAP FLASHING -  
PAINTED TO MATCH  
CLAPBOARDS

1x8 PINE SKIRT BOARDS -  
PAINTED TO MATCH  
CLAPBOARDS

EXTERIOR DETAILS

SCALE: 1/4" = 1'-0"





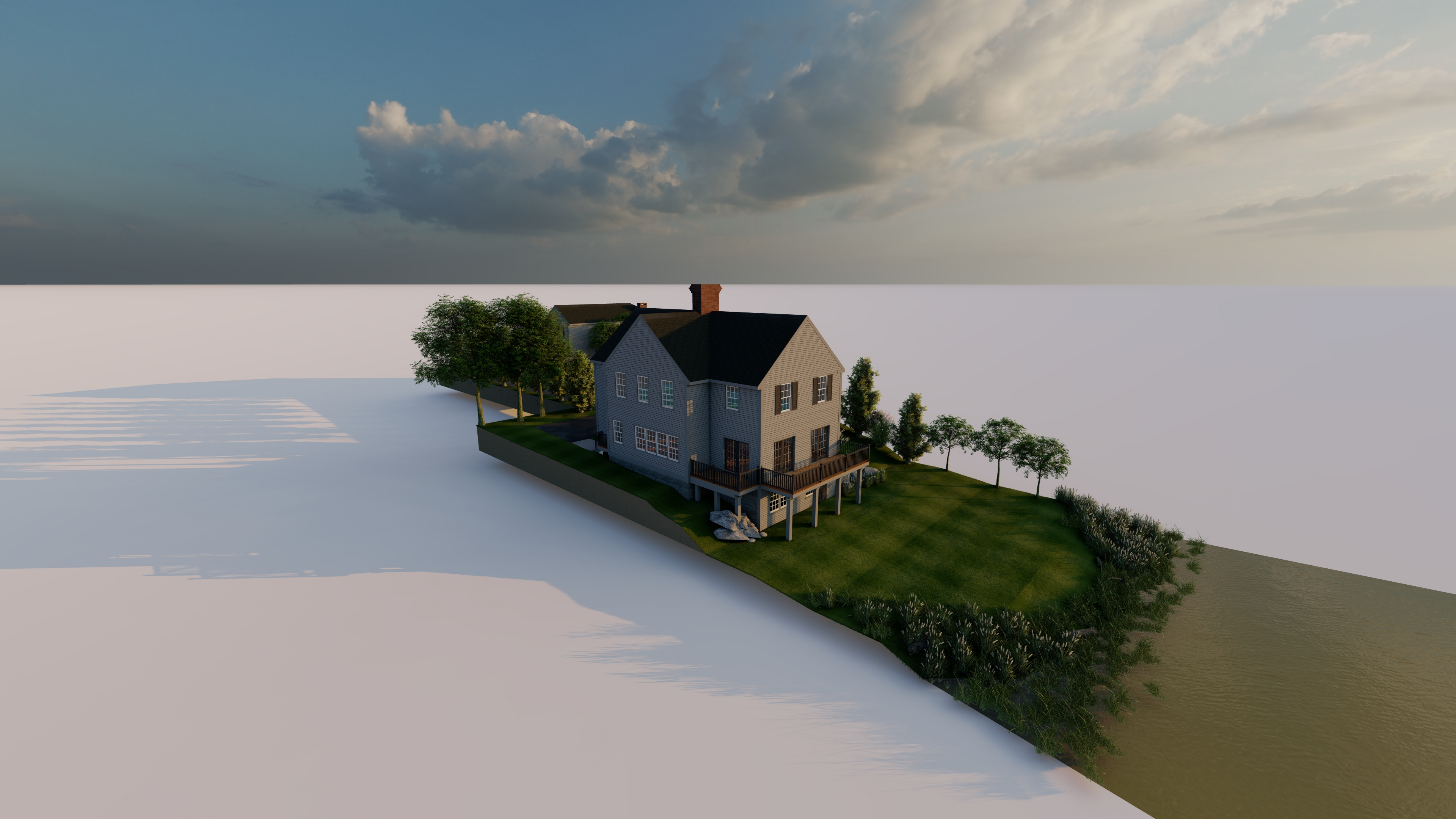




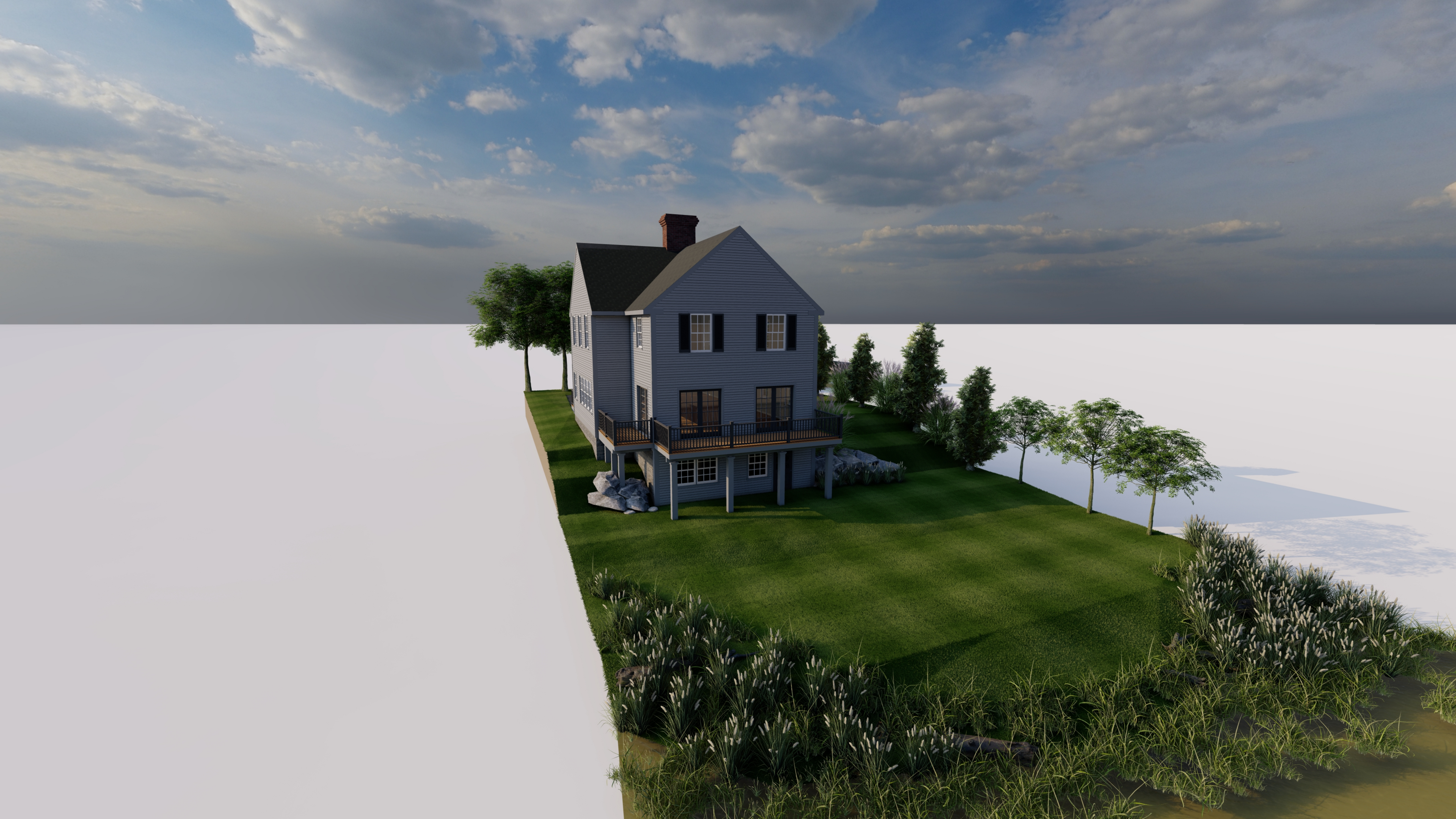








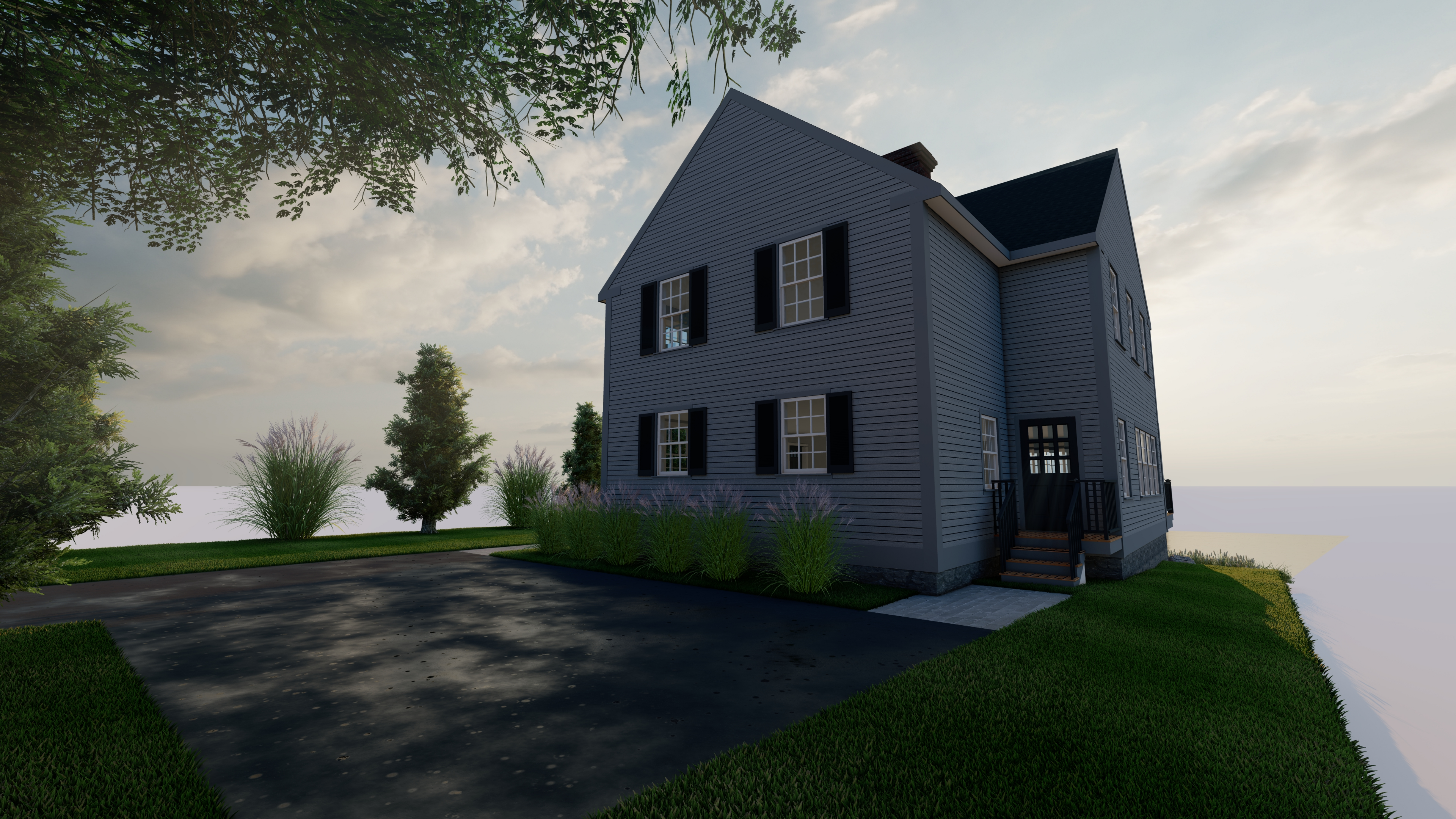














**SOLD BY:**

Eldredge Lumber & Hardware -  
 Portsmouth  
 PO Box 69  
 Cape Neddick, ME 03902-0069

**SOLD TO:**
**CREATED DATE**

8/15/2025

**LATEST UPDATE**

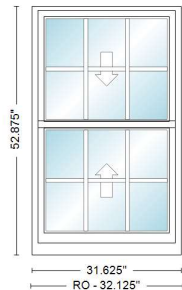
8/15/2025

**OWNER**

Katie Pikul

## Abbreviated Quote Report - Customer Pricing

QUOTE NAME	PROJECT NAME	QUOTE NUMBER	CUSTOMER PO#	TRADE ID
10 DEARBORN AVE	Unassigned Project	8006632		

**ORDER NOTES:**
**DELIVERY NOTES:**


<u>Item</u>	<u>Qty</u>	<u>Operation</u>	<u>Location</u>	<u>Unit Price</u>	<u>Ext. Price</u>
100	13	AA	SECOND FLOOR	\$1,176.04	\$15,288.52

**RO Size: 32 1/8" x 52 7/8"**

**Unit Size: 31 5/8" x 52 7/8"**

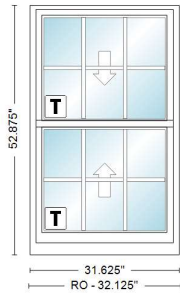
WDH2642E, Unit, 400 Series Woodwright Double-Hung, Equal Sash, White Exterior Frame, White Exterior Sash/Panel, Pine w/White - Painted Interior Frame, Pine w/White - Painted Interior Sash/Panel, AA, Dual Pane Low-E4 SmartSun Standard Argon Fill Full Divided Light w/Energy Spacer Standard Grille Alignment, 3 Wide, 2 High, Colonial Pattern, White, Pine w/White, 3/4" Grille Bar, Stainless Glass / Grille Spacer, Traditional, 1 Sash Locks White, White/WhiteJamb Liner, White, Half Screen, Aluminum

Wrapping: 6 9/16" Interior Extension Jamb Pine / White - Painted Standard Complete Unit Extension Jambs, Factory Applied

Insect Screen 1: 400 Series Woodwright Double-Hung, WDH2642E Half Screen Aluminum White PN:1693174

Unit #	U-Factor	SHGC	ENERGY STAR	Clear Opening/Unit #	Width	Height	Area (Sq. Ft)
A1	0.29	0.18	NO	A1	27.8750	22.2500	4.30000





<u>Item</u>	<u>Qty</u>	<u>Operation</u>	<u>Location</u>	<u>Unit Price</u>	<u>Ext. Price</u>
200	1	AA	SECOND FLOOR	\$1,293.32	\$1,293.32

**RO Size: 32 1/8" x 52 7/8"**

**Unit Size: 31 5/8" x 52 7/8"**

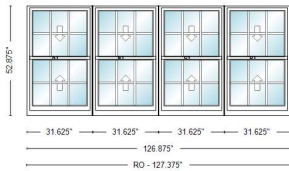
WDH2642E, Unit, 400 Series Woodwright Double-Hung, Equal Sash, White Exterior Frame, White Exterior Sash/Panel, Pine w/White - Painted Interior Frame, Pine w/White - Painted Interior Sash/Panel, AA, Dual Pane Low-E4 SmartSun Tempered Argon Fill Full Divided Light w/Energy Spacer Standard Grille Alignment, 3 Wide, 2 High, Colonial Pattern, White, Pine w/White, 3/4" Grille Bar, Stainless Glass / Grille Spacer, Traditional, 1 Sash Locks White, White/WhiteJamb Liner, White, Half Screen, Aluminum

Wrapping: 6 9/16" Interior Extension Jamb Pine / White - Painted Standard Complete Unit Extension Jambs, Factory Applied

Insect Screen 1: 400 Series Woodwright Double-Hung, WDH2642E Half Screen Aluminum White PN:1693174

<u>Unit #</u>	<u>U-Factor</u>	<u>SHGC</u>	<u>ENERGY STAR</u>	<u>Clear Opening/Unit #</u>	<u>Width</u>	<u>Height</u>	<u>Area (Sq. Ft)</u>
A1	0.29	0.18	NO	A1	27.8750	22.2500	4.30000

<u>Item</u>	<u>Qty</u>	<u>Operation</u>	<u>Location</u>	<u>Unit Price</u>	<u>Ext. Price</u>
300	1	AA - AA - AA - AA		\$4,724.46	\$4,724.46



**RO Size: 127 3/8" x 52 7/8"**

**Unit Size: 126 7/8" x 52 7/8"**

Mull: Factory Mull, Andersen Vertical Priority Ribbon Mull, 1/8 Non Reinforced Material

WDH2642E-4, Unit, 400 Series Woodwright Double-Hung, Equal Sash, White Exterior Frame, White Exterior Sash/Panel, Pine w/White - Painted Interior Frame, Pine w/White - Painted Interior Sash/Panel, AA, Dual Pane Low-E4 SmartSun Standard Argon Fill Full Divided Light w/Energy Spacer Standard Grille Alignment, 3 Wide, 2 High, Colonial Pattern, White, Pine w/White, 3/4" Grille Bar, Stainless Glass / Grille Spacer, Traditional, 1 Sash Locks White, White/WhiteJamb Liner, White, Half Screen, Aluminum

Wrapping: 6 9/16" Interior Extension Jamb Pine / White - Painted Standard Perimeter Complete Unit Extension Jambs, Factory Applied

Insect Screen 1: 400 Series Woodwright Double-Hung, WDH2642E Half Screen Aluminum White PN:1693174

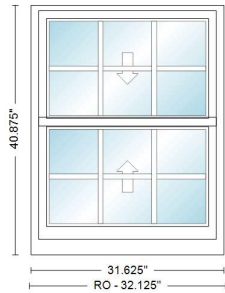
Insect Screen 1: 400 Series Woodwright Double-Hung, WDH2642E Half Screen Aluminum White PN:1693174

Insect Screen 1: 400 Series Woodwright Double-Hung, WDH2642E Half Screen Aluminum White PN:1693174

Insect Screen 1: 400 Series Woodwright Double-Hung, WDH2642E Half Screen Aluminum White PN:1693174

<u>Unit #</u>	<u>U-Factor</u>	<u>SHGC</u>	<u>ENERGY STAR</u>	<u>Clear Opening/Unit #</u>	<u>Width</u>	<u>Height</u>	<u>Area (Sq. Ft)</u>
A1	0.29	0.18	NO	A1	27.8750	22.2500	4.30000
B1	0.29	0.18		B1	27.8750	22.2500	4.30000
C1	0.29	0.18		C1	27.8750	22.2500	4.30000
D1	0.29	0.18		D1	27.8750	22.2500	4.30000





<u>Item</u>	<u>Qty</u>	<u>Operation</u>	<u>Location</u>	<u>Unit Price</u>	<u>Ext. Price</u>
400	4	AA	FIRST FLOOR	\$1,066.76	\$4,267.04

**RO Size: 32 1/8" x 40 7/8"**

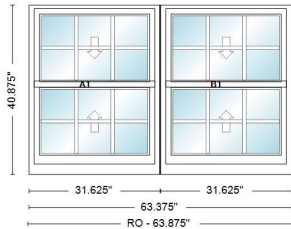
**Unit Size: 31 5/8" x 40 7/8"**

WDH2632, Unit, 400 Series Woodwright Double-Hung, Equal Sash, White Exterior Frame, White Exterior Sash/Panel, Pine w/White - Painted Interior Frame, Pine w/White - Painted Interior Sash/Panel, AA, Dual Pane Low-E4 SmartSun Standard Argon Fill Full Divided Light w/Energy Spacer Standard Grille Alignment, 3 Wide, 2 High, Colonial Pattern, White, Pine w/White, 3/4" Grille Bar, Stainless Glass / Grille Spacer, Traditional, 1 Sash Locks White, White/WhiteJamb Liner, White, Half Screen, Aluminum

Wrapping: 6 9/16" Interior Extension Jamb Pine / White - Painted Standard Complete Unit Extension Jambs, Factory Applied

Insect Screen 1: 400 Series Woodwright Double-Hung, WDH2632 Half Screen Aluminum White PN:1693177

<u>Unit #</u>	<u>U-Factor</u>	<u>SHGC</u>	<u>ENERGY STAR</u>	<u>Clear Opening/Unit #</u>	<u>Width</u>	<u>Height</u>	<u>Area (Sq. Ft)</u>
A1	0.29	0.18	NO	A1	27.8750	16.2500	3.14000



<u>Item</u>	<u>Qty</u>	<u>Operation</u>	<u>Location</u>	<u>Unit Price</u>	<u>Ext. Price</u>
500	1	AA - AA	FIRST FLOOR	\$2,140.12	\$2,140.12

**RO Size: 63 7/8" x 40 7/8"**

**Unit Size: 63 3/8" x 40 7/8"**

Mull: Factory Mull, Andersen Vertical Priority Ribbon Mull, 1/8 Non Reinforced Material  
WDH2632-2, Unit, 400 Series Woodwright Double-Hung, Equal Sash, White Exterior Frame, White Exterior Sash/Panel, Pine w/White - Painted Interior Frame, Pine w/White - Painted Interior Sash/Panel, AA, Dual Pane Low-E4 SmartSun Standard Argon Fill Full Divided Light w/Energy Spacer Standard Grille Alignment, 3 Wide, 2 High, Colonial Pattern, White, Pine w/White, 3/4" Grille Bar, Stainless Glass / Grille Spacer, Traditional, 1 Sash Locks White, White/WhiteJamb Liner, White, Half Screen, Aluminum

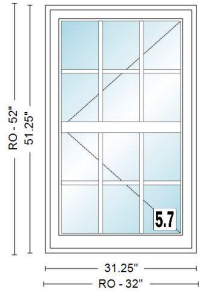
Wrapping: 6 9/16" Interior Extension Jamb Pine / White - Painted Standard Perimeter Complete Unit Extension Jambs, Factory Applied

Insect Screen 1: 400 Series Woodwright Double-Hung, WDH2632 Half Screen Aluminum White PN:1693177

Insect Screen 1: 400 Series Woodwright Double-Hung, WDH2632 Half Screen Aluminum White PN:1693177

<u>Unit #</u>	<u>U-Factor</u>	<u>SHGC</u>	<u>ENERGY STAR</u>	<u>Clear Opening/Unit #</u>	<u>Width</u>	<u>Height</u>	<u>Area (Sq. Ft)</u>
A1	0.29	0.18	NO	A1	27.8750	16.2500	3.14000
B1	0.29	0.18		B1	27.8750	16.2500	3.14000





<u>Item</u>	<u>Qty</u>	<u>Operation</u>	<u>Location</u>	<u>Unit Price</u>	<u>Ext. Price</u>
600	4	Left	None Assigned	\$1,428.48	\$5,713.92

**RO Size: 32" x 52"**

**Unit Size: 31 1/4" x 51 1/4"**

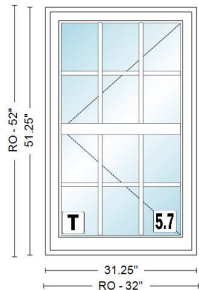
ACW2844, Unit, A Series Casement, Traditional (4 1/8" Bottom Rail), Standard Product Performance, 4 9/16" Frame Depth, Standard Flange, White Exterior Frame, White Exterior Sash/Panel, Pine w/White - Painted Interior Frame, Pine w/White - Painted Interior Sash/Panel, Left, Dual Pane Low-E4 SmartSun Standard Argon Fill Full Divided Light w/Energy Spacer Grille Alignment Required, Horizontal, A Series Double-Hung Windows - Equal Sash, 3 Wide, 4 High, Specified Equal Light Pattern, White, Pine w/White, Chamfer Exterior Grille Bar/ Chamfer Interior Grille Bar, 3/4" Grille Bar, Wide Grille Bar: 2 1/4" with Centered Horizontal Bar Placement Chamfer Glass Stop Stainless Glass / Grille Spacer, Traditional Folding, White, White, Full Screen, Aluminum

Wrapping: 6 9/16" Interior Extension Jamb Pine / White - Painted Standard Complete Unit Extension Jambs, Factory Applied

Hardware: ACW Traditional Folding White PN:0400202

Insect Screen 1: A Series Casement, ACW2844 Full Screen Aluminum White

<u>Unit #</u>	<u>U-Factor</u>	<u>SHGC</u>	<u>ENERGY STAR</u>	<u>Clear Opening/Unit #</u>	<u>Width</u>	<u>Height</u>	<u>Area (Sq. Ft)</u>
A1	0.27	0.15	NO	A1	20.3125	45.6250	6.43000



<u>Item</u>	<u>Qty</u>	<u>Operation</u>	<u>Location</u>	<u>Unit Price</u>	<u>Ext. Price</u>
700	1	Left	None Assigned	\$1,559.55	\$1,559.55

**RO Size: 32" x 52"**

**Unit Size: 31 1/4" x 51 1/4"**

ACW2844, Unit, A Series Casement, Traditional (4 1/8" Bottom Rail), Standard Product Performance, 4 9/16" Frame Depth, Standard Flange, White Exterior Frame, White Exterior Sash/Panel, Pine w/White - Painted Interior Frame, Pine w/White - Painted Interior Sash/Panel, Left, Dual Pane Low-E4 SmartSun Tempered Argon Fill Full Divided Light w/Energy Spacer Grille Alignment Required, Horizontal, A Series Double-Hung Windows - Equal Sash, 3 Wide, 4 High, Specified Equal Light Pattern, White, Pine w/White, Chamfer Exterior Grille Bar/ Chamfer Interior Grille Bar, 3/4" Grille Bar, Wide Grille Bar: 2 1/4" with Centered Horizontal Bar Placement Chamfer Glass Stop Stainless Glass / Grille Spacer, Traditional Folding, White, White, Full Screen, Aluminum

Wrapping: 6 9/16" Interior Extension Jamb Pine / White - Painted Standard Complete Unit Extension Jambs, Factory Applied

Hardware: ACW Traditional Folding White PN:0400202

Insect Screen 1: A Series Casement, ACW2844 Full Screen Aluminum White

<u>Unit #</u>	<u>U-Factor</u>	<u>SHGC</u>	<u>ENERGY STAR</u>	<u>Clear Opening/Unit #</u>	<u>Width</u>	<u>Height</u>	<u>Area (Sq. Ft)</u>
A1	0.27	0.15	NO	A1	20.3125	45.6250	6.43000



SUB-TOTAL:	\$34,986.93
FREIGHT:	\$0.00
LABOR:	\$0.00
TAX:	\$0.00
TOTAL:	\$34,986.93

CUSTOMER SIGNATURE\_\_\_\_\_DATE\_\_\_\_\_

\* All graphics as viewed from the exterior. \*\* Rough opening dimensions are minimums and may need to be increased to allow for use of building wraps or flashings or sill panning or brackets or fasteners or other items.

Thank you for choosing Andersen Windows & Doors