

PROJECT NARRATIVE

- BUILD A NEW ADDITION TO THE REAR OF GILLEY'S KITCHEN STRUCTURE, FOR PUBLIC BATHROOMS & CUSTODIAL.
- BUILD 2 NEW FOOD KIOSKS
- INSTALL NEW CEDAR FENCE TO CONCEAL TRASH RECEPTACLES.
- INSTALL NEW LANDSCAPING AND HARDSCAPE TO COORDINATE WITH PREVIOUSLY APPROVED IMPROVEMENTS TO NEWBERRY WAY (aka Haven Court).

REVISIONS TO FOOD KIOSKS SINCE LAST MEETING:

1. Moved Kiosk 1 further the South, widening food court and enhancing views from Fleet Street to existing Gilley's building.
2. Swapped service window and door locations at Kiosk 1 (due to relocating Kiosk 1).
3. Changed metal panel cladding and trim, to wood composite trim and fiber cement panel.
4. Changed paint colors of Kiosk siding and trim to match existing Gilley's color scheme.
5. Changed end windows on long sides of Kiosks to spandrell glass to accomodate interior kitchen equipment.
6. Added recessed concealed linear LED soffit lighting.



GILLEY'S FOOD COURT

SHEET LIST -HDC	
SHEET NO.	NAME
G0.1	COVER
G1.1	SITE PLAN
G1.2	LANDSCAPE PLAN
G1.3	ROOF PLAN
G2.1	ELEVATION, WEST
G2.2	ELEVATION, SOUTH
G2.3	ELEVATION, EAST
G2.4	ELEVATION, NORTH
G2.5	FOOD KIOSKS ELEVATIONS
G3.1	3D BIRDSEYE AXONOMETRIC
G3.2	PERSEPECTIVE from FLEET AT THE WILDER
G3.3	PERSEPECTIVE into COURTYARD FROM FLEET
G3.4	PERSEPECTIVE from FLEET AT JJN
G3.5	PERSEPECTIVE from FLEET LOOKING UP NEWBERRY WAY
G3.6	PERSEPECTIVE from TOP OF NEWBERRY WAY
G3.7	PERSEPECTIVE from PARKING GARAGE LOOKING AT RESTROOM ADDITION
G3.8	PERSEPECTIVE NIGHT
G4.0	MILLWORK DETAILS
MATERIALS PACKAGE	

HISTORIC DISTRICT COMMISSION
PUBLIC HEARING (CONTINUED)
JANUARY 2026

G0.1

COVER

GILLEY'S ADDITION

SCALE:
12/19/2025



NEW BIKE
RACKS
NEW 6' HIGH
CEDAR BOARD
FENCE & GATES

NEW STEPS
& RAILING
PLANTER
CONCRETE
PAVEMENT

BRICK SIDEWALK
(FUTURE FLEET
ST CITY
IMPROVEMENTS)
COLORED
CONCRETE
RIBBON
PATTERN



NEW CEDAR
FENCE & GATE

TRASH CORRAL

EXISTING
CONDENSER

EXISTING TO REMAIN

CUST.

TLT.

TLT.

GAS
METERS

NEW ADDITION
REBUILT RAISED
PLANTING BED

+/-12" GRANITE CURB

NEW DOOR & STEPS

GRANITE FACED RETAINING WALL

DICHROIC GLASS PANEL SCREEN

PUBLIC TRASH &
RECYCLING AREA

TRANSFORMERS

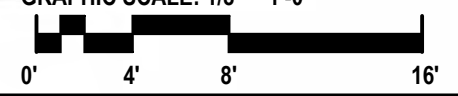
CONCRETE PAD

NEWBERRY WAY

SITE PLAN

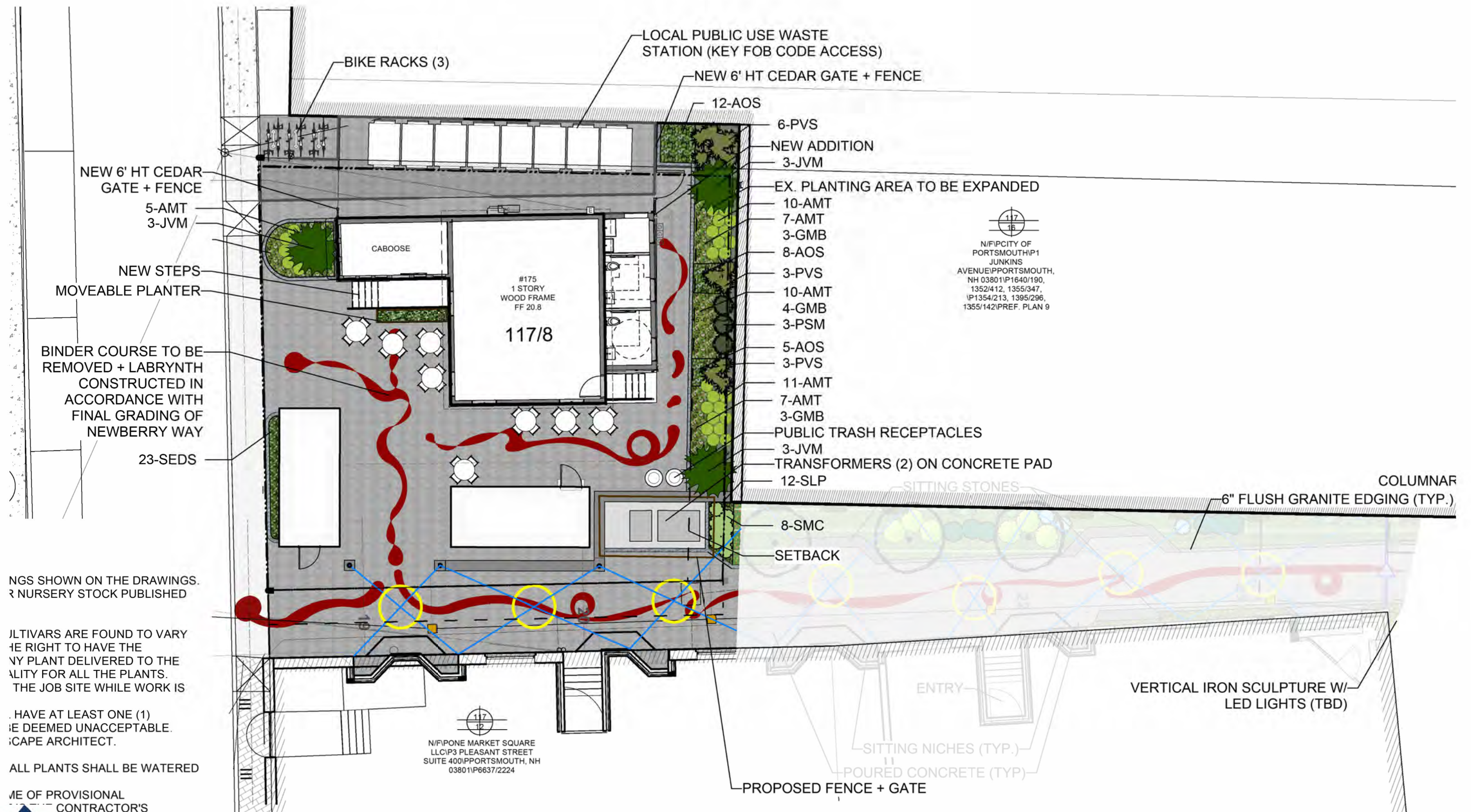
GILLEY'S ADDITION

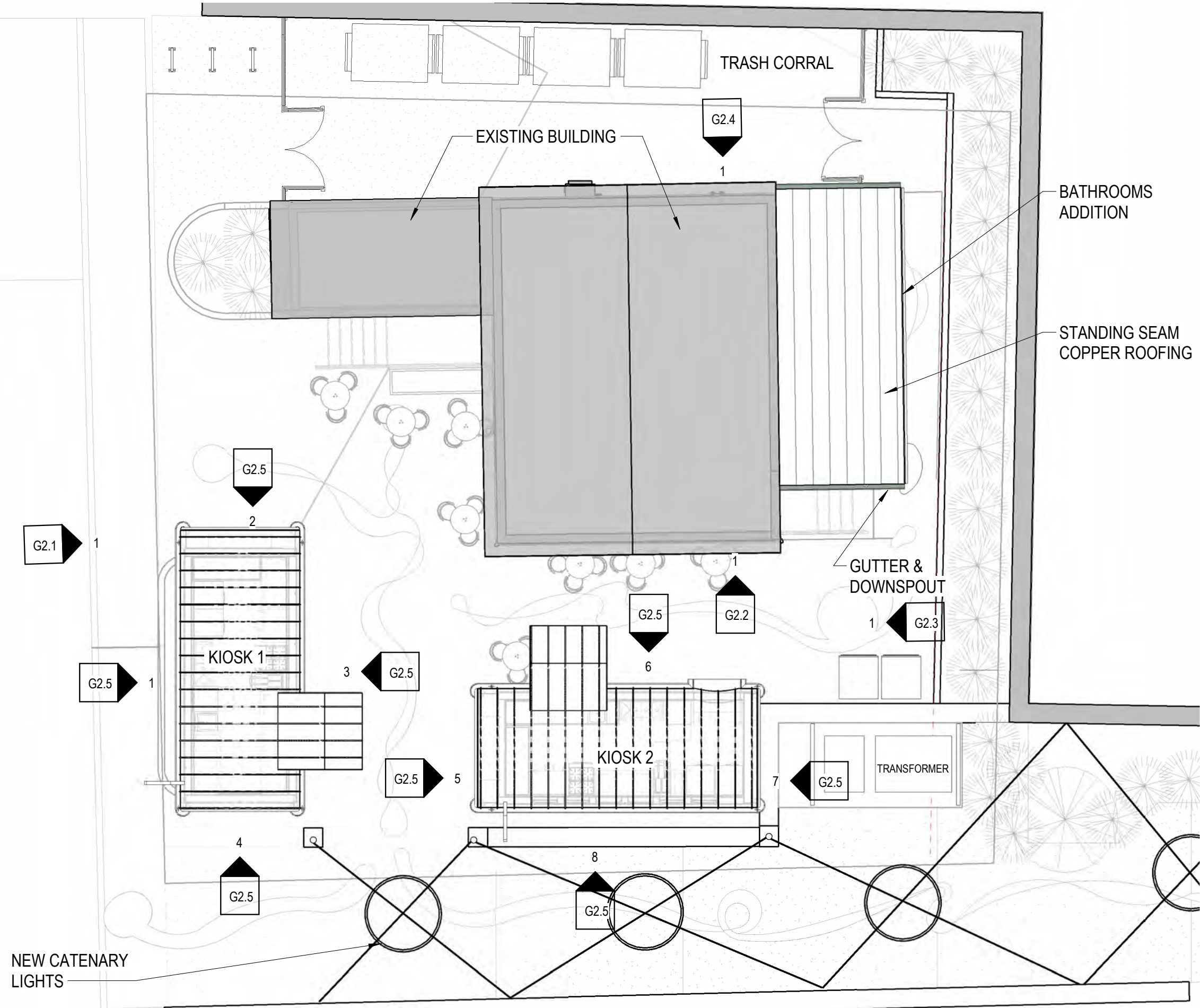
GRAPHIC SCALE: 1/8" = 1'-0"



G1.1

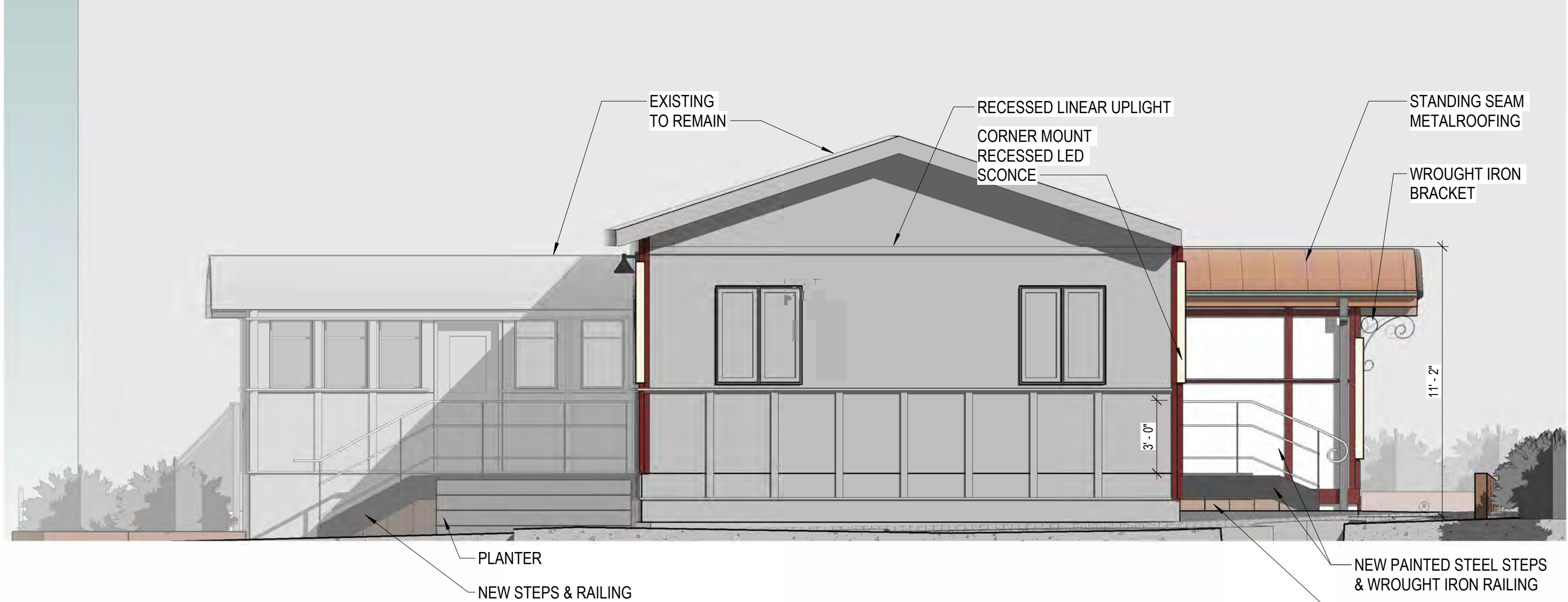
12/19/2025
PROJECT NO:1002.1



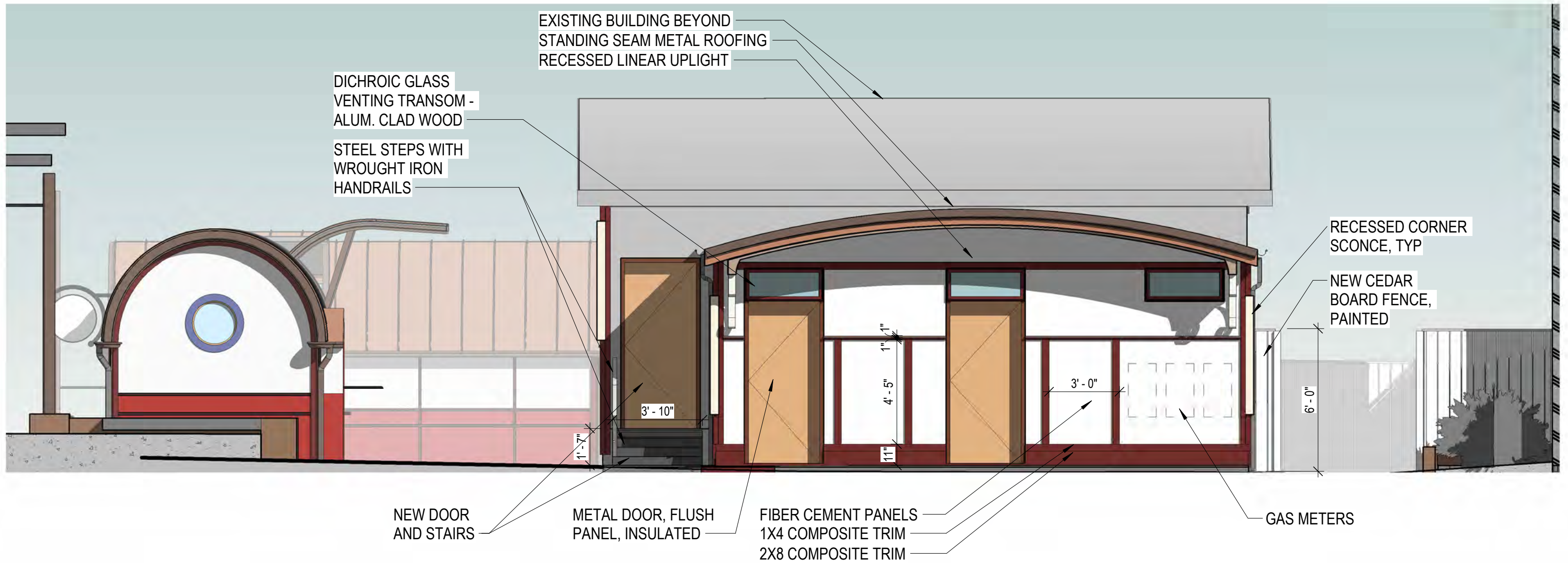


ROOF PLAN
GILLEY'S ADDITION





1 GILLEY'S ADDITION - SOUTH ELEVATION
1/4" = 1'-0"

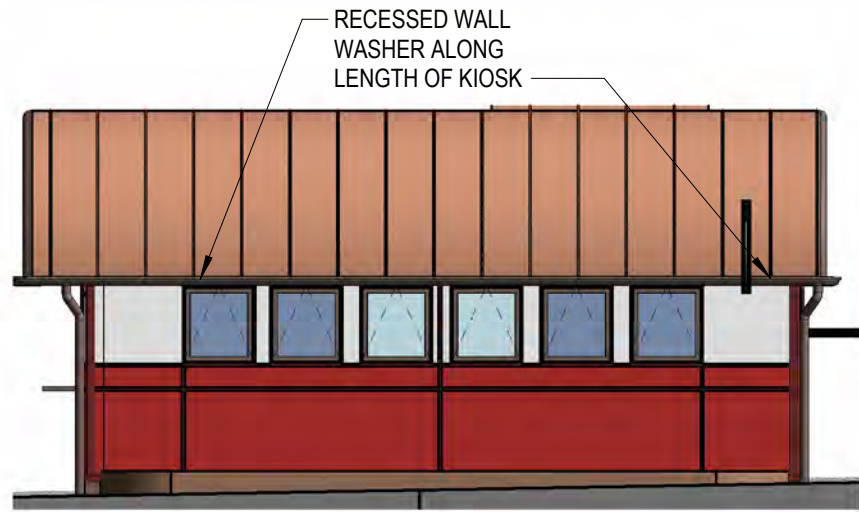


1 GILLEY'S ADDITION - EAST ELEVATION
1/4" = 1'-0"

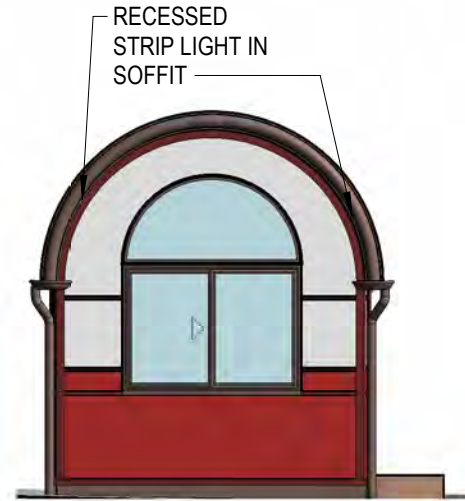




1 GILLEY'S NORTH ELEVATION TRASH ENCLOSURE
1/4" = 1'-0"



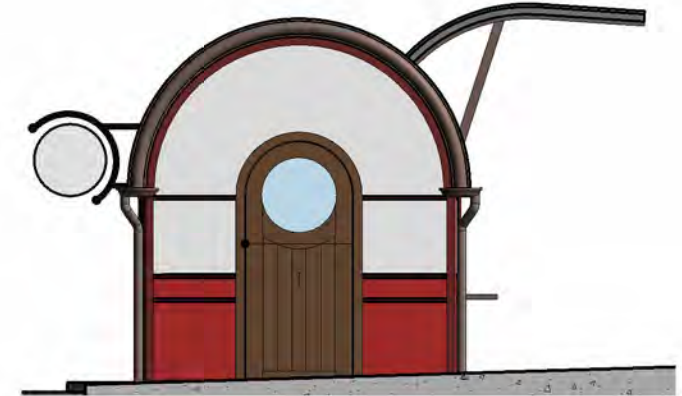
1 KIOSK 1 WEST
3/16" = 1'-0"



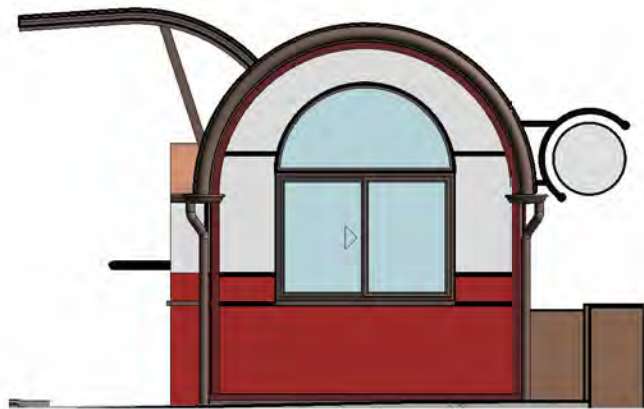
2 KIOSK 1 NORTH
3/16" = 1'-0"



3 KIOSK 1 EAST
3/16" = 1'-0"



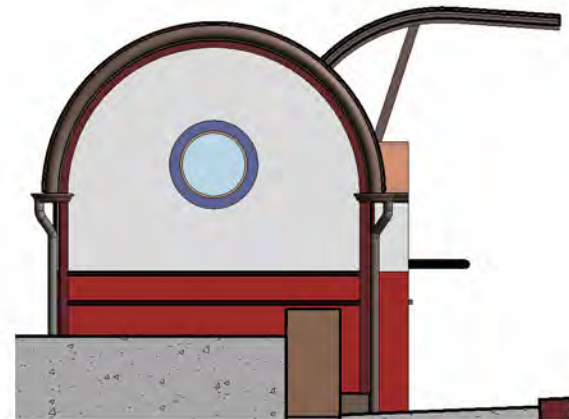
4 KIOSK 1 SOUTH
3/16" = 1'-0"



5 KIOSK 2 WEST
3/16" = 1'-0"



6 KIOSK 2 NORTH
3/16" = 1'-0"



7 KIOSK 2 EAST
3/16" = 1'-0"



8 KIOSK 2 SOUTH
3/16" = 1'-0"









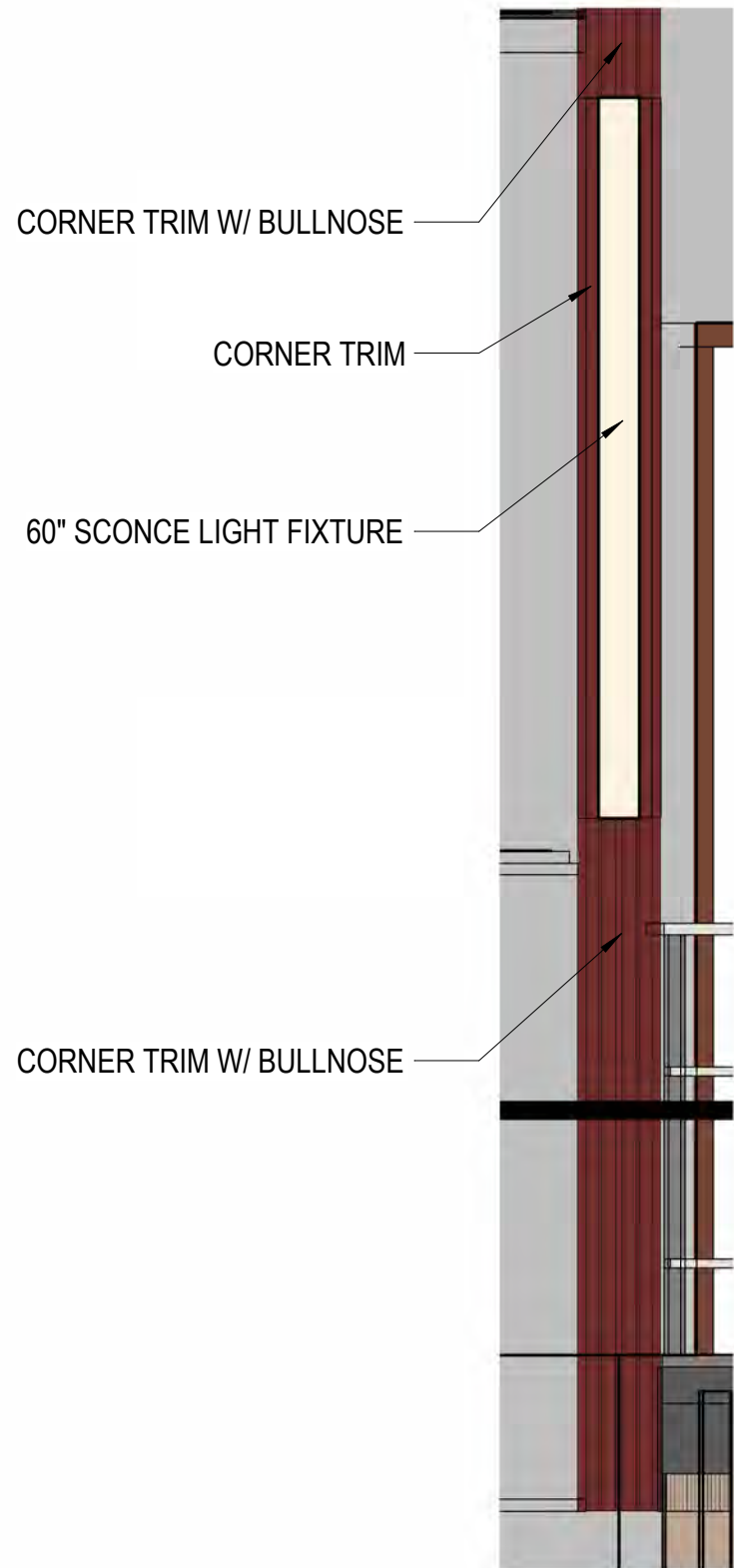




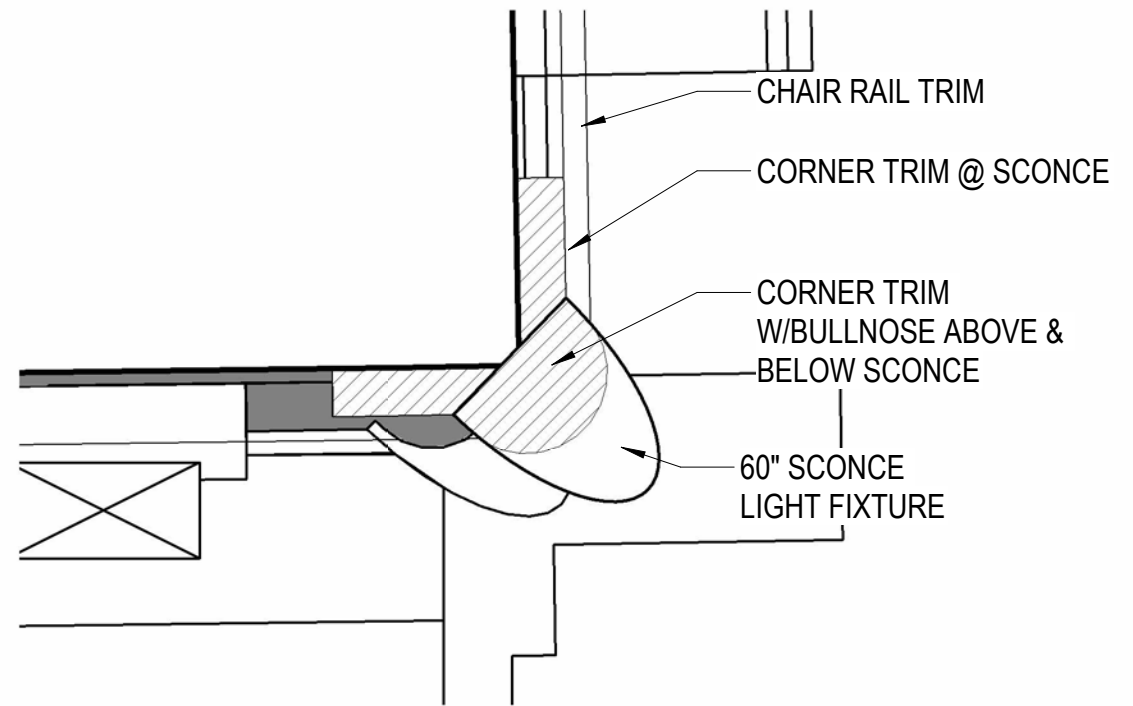








2 CORNER TRIM AND SCONCE ELEVATION - @ EXISTING BUILDING ADDITION
3/4" = 1'-0"



1 WALL CORNER TRIM AND SCONCE DETAIL - PLAN VIEW @ EXISTING BUILDING ADDITION
3" = 1'-0"

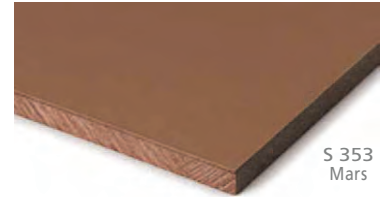


Materials Schedule				
Sheet	Material	Manufacturer	Model/Make	Finish/Color
1	Siding - Fiber Cement Panels	American Fiber Cement Corp.	Cembrit Solid	Luna & Custom red to match existing
2	Wood Composite Trim	Miratec	5/4"x Custom profiles	Field painted
3	Metal Roofing, Standing Seam	ATAS International Inc.	Curved Field-Lok	Vivid Metallic, Jasper (copper color)
4	Gutters	Riverside Sheet metal	Round, Radius	Copper, aged
5	Doors (bathrooms)	TruDoor	Transom, dichroic glass	Steel, painted
6	Doors (food kiosks)	Custom	Wood, Arch Top, round lite	Clear finish, Walnut
7	Windows	Pella	Reserve Contemporary	Alum Clad, aged copper
8	Granite Benches & Curbs	Swenson Granite	Benches	Carolina Coral & Autumn Pink
9	Railings	Custom	Wrought iron	Black

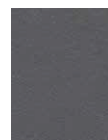


Cembrit **Solid**

Cembrit Solid is a through-colored panel with an acrylic paint surface. It's designed this way so it closely matches the surface's acrylic paint layer. This means if you choose the Solid product line for your façade, every edge of the board will feature the same hue as the surface color, giving the wall an unblemished appearance.



S 030
Mercury

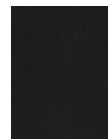


S 071
Orcus

Grays



S 101
Pluto



S 131
Juno

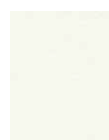


S 151
Pallas



S 191
Erebus

Blacks



S 212
Luna



S 282
Saturn

Whites



S 334
Jupiter



S 353
Mars

Reds



S 515
Venus



S 525
Triton

Yellows



S 606
Rhea



S 616
Ceres



S 656
Terra



S 676
Callisto

Greens



S 747
Neptune



S 757
Mimas

Blues

MiraTEC Treated Exterior Composite Trim



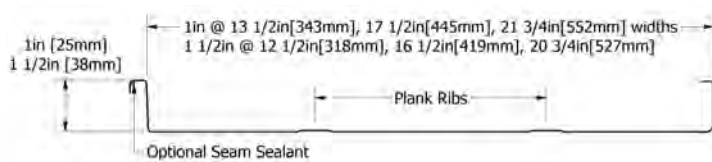
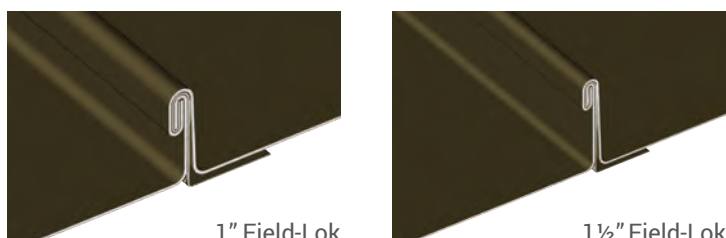
The Original TEC Trim™, MiraTEC Treated Exterior Composite trim is manufactured through the original TEC process and combines the eye-catching beauty of authentic woodgrain with the long-lasting performance of an engineered product. Because it is not hardboard, MiraTEC trim will not delaminate, is moisture, rot and termite resistant, and is backed by a 50-year limited warranty.

MiraTEC Treated Exterior Composite Trim is the first wood composite trim to earn an evaluation report from ICC Evaluation Service (ICC-ES). To view ESR-3043, visit the ICC website at: http://www.icc-es.org/reports/pdf_files/ICC-ES/ESR-3043.pdf

Competitive and long term performance testing shows MiraTEC resists moisture, rot and termites and outperforms the competition in several key areas:

- **Moisture resistant:** As measured by ASTM D1037 for water absorption and thickness swelling.
- **Rot resistant:** Tested per AWPA E16 Field Test for Evaluation of Wood Preservatives to be Used Out of Group Contact: Horizontal Lap-Joint Method.
- **Termite resistant:** As measured by AWPA E7 Standard Method of Evaluating Wood Preservatives by Field Tests with Stakes.





CURVED FIELD-LOK™

SKU: FLX (convex, min. radius 8'-0" aluminum, 12'-0" steel)

MATERIAL

.032 aluminum
24, 22* ga. metallic coated steel
24 ga. 55% Al-Zn alloy coated steel with acrylic coating
16, 20 oz. copper*

PANEL SPECS

Coverage: 1" seam - 13½", 17½", 21¾"
1½" seam - 12½", 16½", 20¾" | Custom widths available
Minimum Length: 4'-0"
Seam Height: 1", 1½"

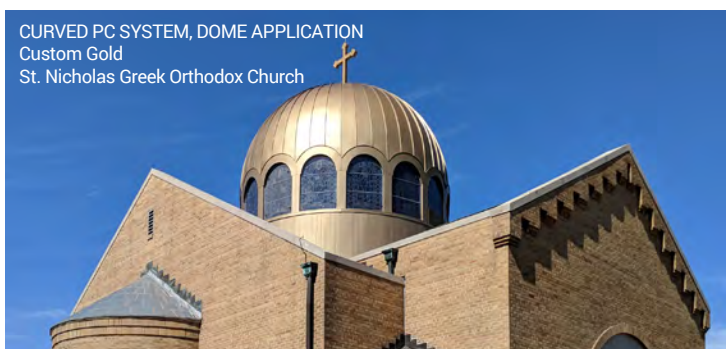
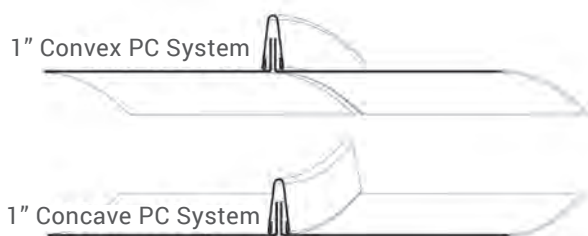
TEXTURE

Smooth

MINIMUM SLOPE

2:12 depending on climate conditions

www.atas.com/curvedfieldlok



CURVED PC™ SYSTEM

SKU: PCX (convex, minimum radius 2'-9"),
PCV (concave, minimum radius 4'-0")

MATERIAL

.032, .040 aluminum
24 ga. metallic coated steel
24 ga. 55% Al-Zn alloy coated steel with acrylic coating
16 oz. copper*

PANEL SPECS

Coverage: 11¼", 12⅝", 14⅝"**, 15¼"
**Copper and Dark Bronze Anodized only
Minimum Length: 3'-0"
Seam Height: 1"

AVAILABLE

Tapered , Dome

TEXTURE

Smooth or Stucco Embossed

MINIMUM SLOPE

3:12

www.atas.com/curvedpc

VIVID METALLIC*



Vivid Metallic Collection (special, non-stock): Looking for a transforming aesthetic? This collection includes distinctive shifting metallic colors to create one of a kind designs.



Tourmaline



Jasper



Opal



JASPER

LOW SUPPLIES: PLEASE CALL



15 Reardon Road - Medford, MA - 02155
Tel.: (781) 396-0070 - Fax: (781) 396-8890

[Accessories](#)[Gutters](#)[Radius](#)[K-Style](#)[Half-Round](#)[Box](#)[Brownstone](#)[Custom](#)[Liner](#)[Colors](#)

Radius Gutters / Curved Gutters

Custom made to order - Inside and outside curved gutters

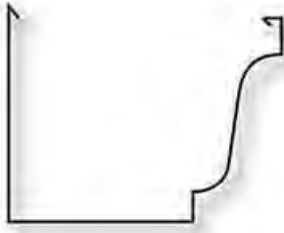


Riverside Sheet Metal specializes in the custom fabrication of radius gutters. The most common profiles are [half-round](#), [k-style](#), [box](#) and [brownstone](#) gutters, but we can also manufacture custom designed [gutter liners](#) and radius gutter liners.

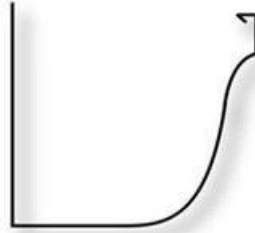
Radius gutters, or curved gutters can most times be manufacture to accommodate regular hangers, or to have custom made hangers installed. Riverside can also pre-install hangers, outlets and end caps.

To have a radius gutter made, we need to know the profile of the curved gutter, the radius of the arc (if not exact, please provide us with a rigid template), if it's an **inside** or **outside radius** and the material for the gutter (normally copper or aluminum).

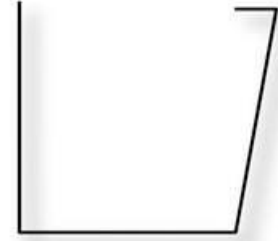
Radius gutters are **normally fabricated all in one piece** (5" and 6" k-style, brownstone, box and half round). Additionally, gutters with custom profiles may be manufactured in different lengths. On those, all seams are thoroughly soldered on copper gutters, ensuring a long lasting joint, while the same are riveted on aluminum gutters.



5" & 6" k-style radius gutter
Up to 11' lengths



5" & 6" brownstone radius gutter
(Example) Up to 11' lengths



5" & 6" simple box radius gutter
(Example) Up to 11' lengths



5" & 6" half-round radius gutter
Up to 11' lengths

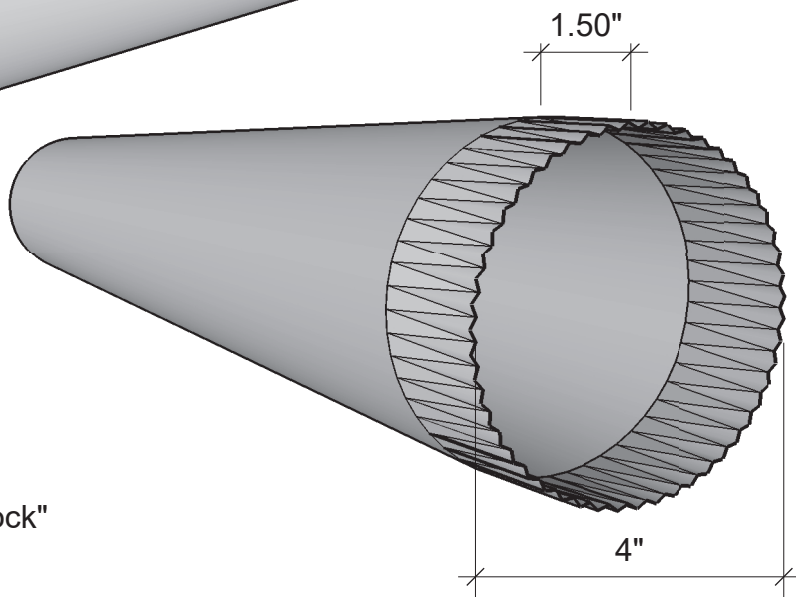
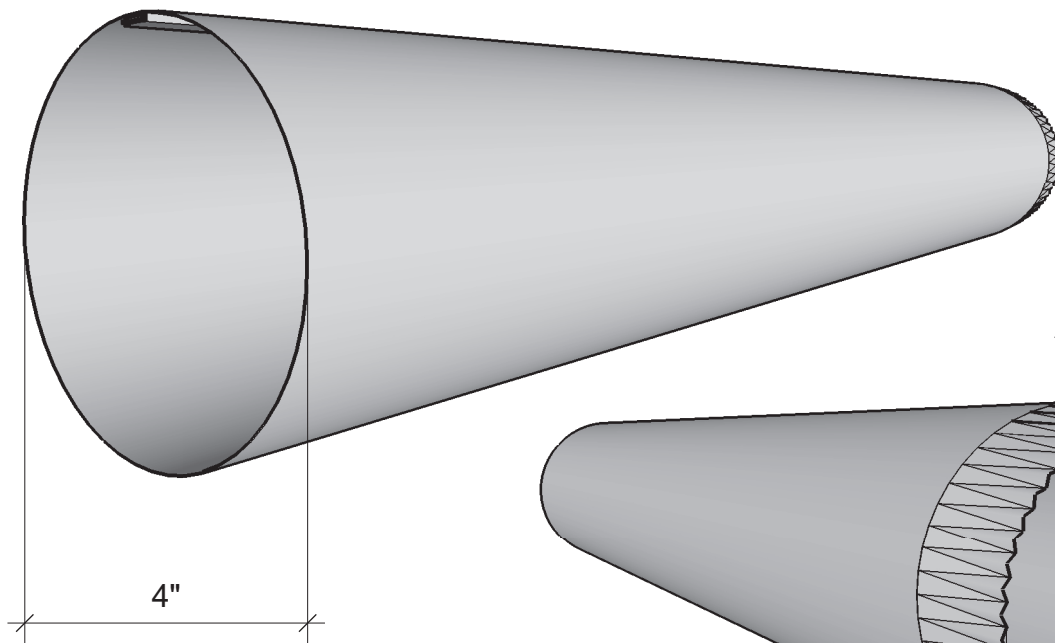
Radius K-Style Gutters



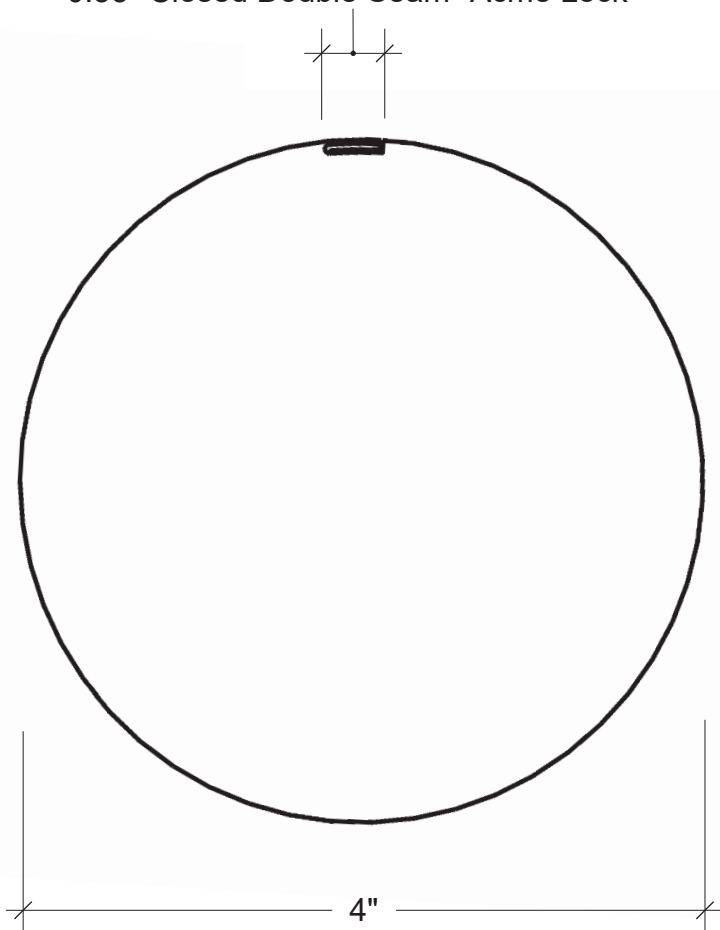
Radius Brownstone Gutters



Radius Half-Round Gutters



0.33" Closed Double Seam "Acme Lock"



Material Types Available

- ☐ 24 ga. Pre-Fin Kynar Steel Color: _____
- ☐ 24 ga. Galvalume Mill Finish
- ☐ .027 Aluminum Color: _____
- ☐ .032 Pre-Fin Kynar Alum Color _____
- ☐ .040 Pre-Fin Kynar Alum Color _____
- ☐ 16 oz. Copper
- ☐ 20 oz. Copper
- ☐ 16 oz. Lead Coated Copper
- ☐ 26 ga. Stainless Steel
- ☐ 24 ga. Stainless Steel

Notes:

Downspout is only available in 10'0" sections

Downspout is crimped on one end for easy installation

4



1310 E. Cornwallis Rd.
Durham, NC 27713
P-(919) 544-8887 F- 544-8898

info@kmsheetmetal.com - www.kmsheetmetal.com

4" Round Downspout

REVISIONS		
MM/DD/YY	REMARKS	
1	...ORIGINAL DRAFT OF DRAWING	
2		
3		
4		
5		

1001
D



METAL DOORS ▾

WOOD DOORS ▾

DOOR FRAMES ▾

HARDWARE ▾

LITE KITS ▾

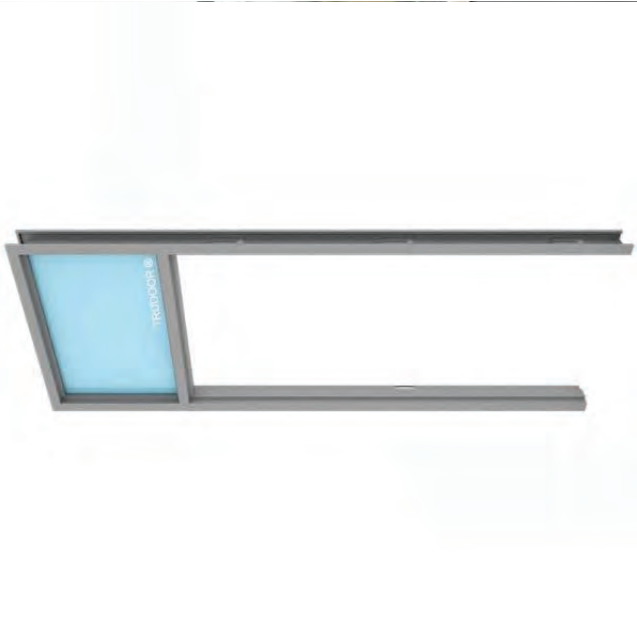
SPECIALTIES ▾



Search Trudoor...

Featuring Doors and Frames Made in the USA!

Hollow Metal Door Frames (<https://www.trudoor.com/commercial-hollow-metal-door-frames/>) > **Transom Frame**



(<https://prod-trudoor-media.s3.us-west-2.amazonaws.com/wp-content/uploads/2019/05/21112044/commercial-hollow-metal-transom-frame-e1593364728903.jpg>)



Hollow Metal Transom Frame

Starting at **Inquire**



Nationwide Delivery

A hollow metal transom frame is a door frame with a fixed horizontal transom bar and glass above the door. A steel panel made from a hollow metal door can be used in lieu of glass.

- 16-Gauge Steel – Cold Rolled or Galvanized
- Available Welded or Knocked Down
- Includes Anchors for Any Wall Condition

CONFIGURE & GET PRICE(/QUOTE-REQUEST/)

Product Overview



(<https://prod-trudoor-media.s3.us-west-2.amazonaws.com/wp-content/uploads/2019/04/21112338/flush-hollow-metal-door-2.jpg>)



Flush Commercial Hollow Metal Doors

The flush hollow metal door, or *steel slab door*, is the most common commercial steel door and can be used for virtually any application, including industrial and commercial buildings. Flush doors have no cut-outs for anything other than locksets and hinges but can be prepped for other hardware, glass kits, and louvers.

- Heavy-Duty 18-Gauge Steel
- Rigid Honeycomb or Polystyrene Core
- Ideal for Exterior and Interior Applications

[CONFIGURE & GET PRICE\(/QUOTE-REQUEST/\)](#)

3M™ Dichroic Film for Laminated Glass

Compatible with EVA, SentryGlas® or PVB interlayer adhesives.
Available in gold-blue or copper-bronze colors.

Flexible

Film can be printed, cut, patterned, bent, or combined with different glass types or interlayer adhesives.

Versatile

Applications include shading fins, balustrades, exterior glass, partition walls, shower doors, artistic glass and furniture.

Gold-Blue Dichroic Film



In Transmission (Shown)

In Reflection

Yellow ▶ Magenta ▶ Blue

Gold (straight) Blue (angle)

Copper-Bronze Dichroic Film



In Transmission (Shown)

In Reflection

Magenta ▶ Blue ▶ Aqua

Copper (straight) Bronze (angle)

Solar performance of clear laminated glass

	Reflection Visible	Transmission Visible	Transmitted Energy	Reflected Energy	Absorbed Energy	TSER	SHGC
Gold-Blue Dichroic Glass	89%	11%	56%	29%	15%	39%	0.61
Copper-Bronze Dichroic Glass	29%	71%	55%	29%	17%	41%	0.59

Make an impression at 3M.com/Glass.

Technical Information: The technical information, recommendations and other statements contained in this document are based upon tests or experience that 3M believes are reliable, but the accuracy or completeness of such information is not guaranteed.

Product Use: Many factors beyond 3M's control and uniquely within user's knowledge and control can affect the use and performance of a 3M product in a particular application. Given the variety of factors that can affect the use and performance of a 3M product, user is solely responsible for evaluating the 3M product and determining whether it is fit for a particular purpose and suitable for user's method of application.

Warranty, Limited Remedy, and Disclaimer: Unless an additional warranty is specifically stated on the applicable 3M product packaging or product literature, 3M warrants that each 3M product meets the applicable 3M product specification at the time 3M ships the product. 3M MAKES NO OTHER WARRANTIES OR CONDITIONS, EXPRESS OR IMPLIED, INCLUDING, BUT NOT LIMITED TO, ANY IMPLIED WARRANTY OR CONDITION OF MERCHANTABILITY OR FITNESS FOR A PARTICULAR PURPOSE OR ANY IMPLIED WARRANTY OR CONDITION ARISING OUT OF A COURSE OF DEALING, CUSTOM OR USAGE OF TRADE. If the 3M product does not conform to this warranty, then the sole and exclusive remedy is, at 3M's option, replacement of the 3M product or refund of the purchase price.

Limitation of Liability: Except where prohibited by law, 3M will not be liable for any loss or damage arising from the 3M product, whether direct, indirect, special, incidental or consequential, regardless of the legal theory asserted, including warranty, contract, negligence or strict liability.

3M
Renewable Energy Division
3M Center, Building 235-2S-27
St. Paul, MN 55144-1000
3M.com/glass

3M is a trademark of 3M.
Used under license in Canada.

Please recycle. Printed in the U.S.A.
© 3M 2015. All rights reserved.
98-0150-0701-0



Pella® Reserve™

Contemporary Clad/Wood

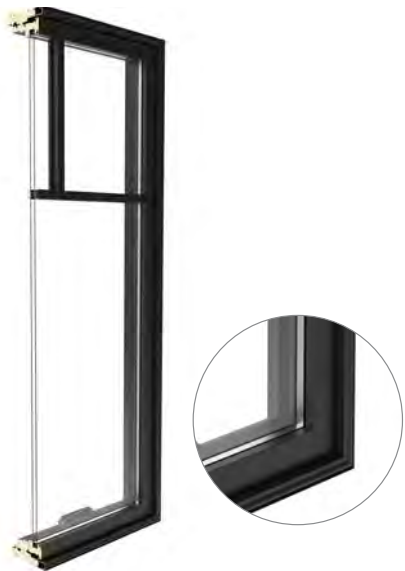


Simple and sophisticated designs that embody the tenets of pure, contemporary style.

Interior



Exterior



- Easy-to-learn Pella Steady Set™ interior installation system**
 Pella Steady Set Interior Installation System is a revolutionary, award-winning and safer way to install new construction windows.¹ The simple system is the fastest, most labor efficient wood window installation system with uncompromising quality.² Available on select windows.
- Clean lines**
 Bring your vision to life with expansive glass options combined with some of the narrowest sightlines in the industry.
- Modern hardware**
 Our renowned, exclusive hardware has set the bar for the industry. Featuring sleek lines, the Saldo foldaway crank adds the perfect finishing touch.
- Architectural interest**
 Our industry-leading modern designs with through-stile construction deliver a clean sash joint with pure, 90-degree exteriors. Square grille profiles provide another layer of design flexibility.
- Virtually unlimited customization**
 If you can dream it, we can build it with our most customizable product line. From extra tall to extra wide, Pella can craft unique windows that complement your aesthetic. Custom sizes, grille patterns and designs, finishes, wood types and glass options are available.
- Tailor-made solutions**
 From preliminary drawings to installation, Pella's expert team of architects, engineers, drafters and consultants can work to deliver custom window and door solutions for your project. Partner with Pella to achieve your unique vision without concessions.
- Cutting-edge innovation**
 Our intentional innovations solve modern-day inconveniences without compromising on design. Preserve the beauty of Pella Reserve windows and doors while protecting what matters most with integrated security sensors.
- Durable interiors and extruded aluminum exteriors**
 To help save you time on the jobsite, interior finish options are available in a variety of paints, stains and primed and ready to paint. To complement your exterior aesthetic, choose from our carefully curated color palette or define your own custom color for your project.
- ENERGY STAR® certified¹**
 Pella wood products offer energy-efficient options that will meet or exceed ENERGY STAR guidelines in all 50 states.
- Testing beyond requirements**
 At Pella, our products are tested beyond requirements to help ensure they have long-lasting performance and reduce call-backs for you.
- Best limited lifetime warranty²**
 Pella Reserve products are covered by the best limited lifetime warranty in the business for wood windows and patio doors.²

Available in these window and patio door styles:



Special shape windows also available.

Colors

Wood Types

Choose the wood species that best complements your project's interior.

Custom solutions:



Pine



Douglas Fir



Mahogany



White Oak



Red Oak



Cherry



Maple

Prefinished Pine Interior Colors

Custom interior finishes, unfinished or primed and ready-to-paint are also available.



White



Bright White



Linen White



Natural Stain



Golden Oak Stain



Early American Stain



Provincial Stain



Dark Mahogany Stain



Charcoal Stain




Black Stain

Extruded Aluminum-Clad Exterior Colors

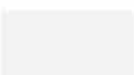
Our low-maintenance EnduraClad® exterior finish resists fading. Take durability one step further with EnduraClad Plus which also resists chalking and corrosion.⁷




Custom colors are also available.




Black




White




Brown




Fossil




Iron Ore



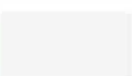
Portobello




Putty




Almond




Classic White




Brick Red




Hartford Green




Pearl Gray




Soft Linen




Satin Steel




Matte Gray




Wolf Gray



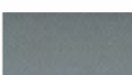
Spice Red



Sage



Frost Blue



Blue Ash

Screens

Rolscreen®

Rolscreen soft-closing retractable screens roll out of sight when not in use. Available on casement windows.

Integrated Rolscreen®

A concealed retractable screen that moves seamlessly with the sash of a single- or double-hung window – appearing when you open the window and rolling out of sight when you close it.

TuffScreen® by Phifer®

The TuffScreen® is 2.5x stronger than a standard screen.⁸ It is tear, puncture and damage resistant, standing up to pets, children and harsh weather. Available on sliding patio doors.

⁸All trademarks are property of their respective owners

Flat

InView™ screens are clearer than conventional screens and come standard.



The Best Limited Lifetime Warranty in the Industry

We know your reputation matters and you stake your reputation on quality, dependable products. That's why we have the best limited lifetime warranty in the industry for wood windows and patio doors.²

¹ Some Pella products may not meet ENERGY STAR® guidelines in Canada. For more information, contact your local Pella sales representative or go to energystar.gc.ca.

² Based on comparing written limited warranties of leading national wood window and wood patio door brands. See written limited warranty for details, including exceptions and limitations, at pella.com/warranty or contact Pella Customer Service.

³ Ratings are contingent on product configurations.

⁴ Color-matched to your product's interior and exterior color. Offering may vary by product type. See Pella sales representative for details.

⁵ Flush multi-slide handle is a Pella exclusive design.

⁶ Flush multi-slide handle is not available in Champagne.

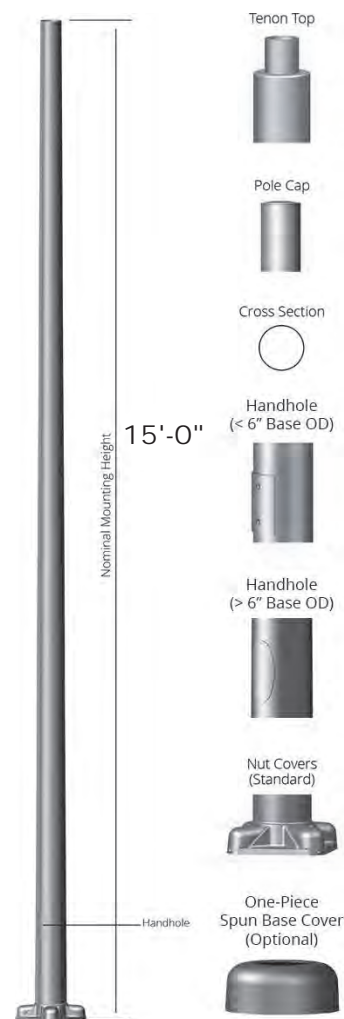
⁷ EnduraClad Plus protective finish is not available with all colors. See your local Pella sales representative for availability.

⁸ Based on the composite results of a 5-panel strength analysis comparing TuffScreen and standard screening.

Round Tapered Aluminum Light Poles, Anchor Base

Product Overview

- **Pole Shaft** - The pole shaft is extruded and spun from seamless 6063-T6 aluminum.
- **Pole Top** - A removable top cap is provided for poles receiving drilling patterns for side-mount luminaire arm assemblies. Other pole top options include Tenon Top, Top Cap Only or Open Top which is typical when the pole top diameter matches the necessary slip-fit dimensions.
- **Hand Hole** - A covered hand hole with hardware and grounding provision are provided.
- **Anchor Base & Cover** - The anchor base is cast from 356 alloy aluminum and supplied with nut covers. The completed pole assembly is heat-treated to a T6 temper. Optional spun collar, square cast and decorative base covers available as special order.
- **Anchor Bolts** - Anchor bolts conform to ASTM F1554 Grade 55 and are provided with two hex nuts and two flat washers. Bolts have an "L" bend on one end and are galvanized a minimum of 12" on the threaded end.
- **Hardware** - All structural fasteners are galvanized high strength carbon steel. All non-structural fasteners are galvanized or zinc-plated carbon steel or stainless steel.
- **Finish** - Finishes include anodized or painted. Please consult factory for special finishing colors and fixture matching options. When storing light poles outside, remove all protective wrapping immediately upon delivery to prevent finish damage.
- **Design Criteria** - Standard EPA (Effective Projected Area) and weight values are based on Standard Commercial Criteria (with 1.3 gust factor) for side and top mounted fixtures only. Satisfactory performance of light poles is dependent upon the pole being properly attached to a supporting foundation of adequate design.



GRANITE BENCHES



Autumn Pink



Carolina Coral

