

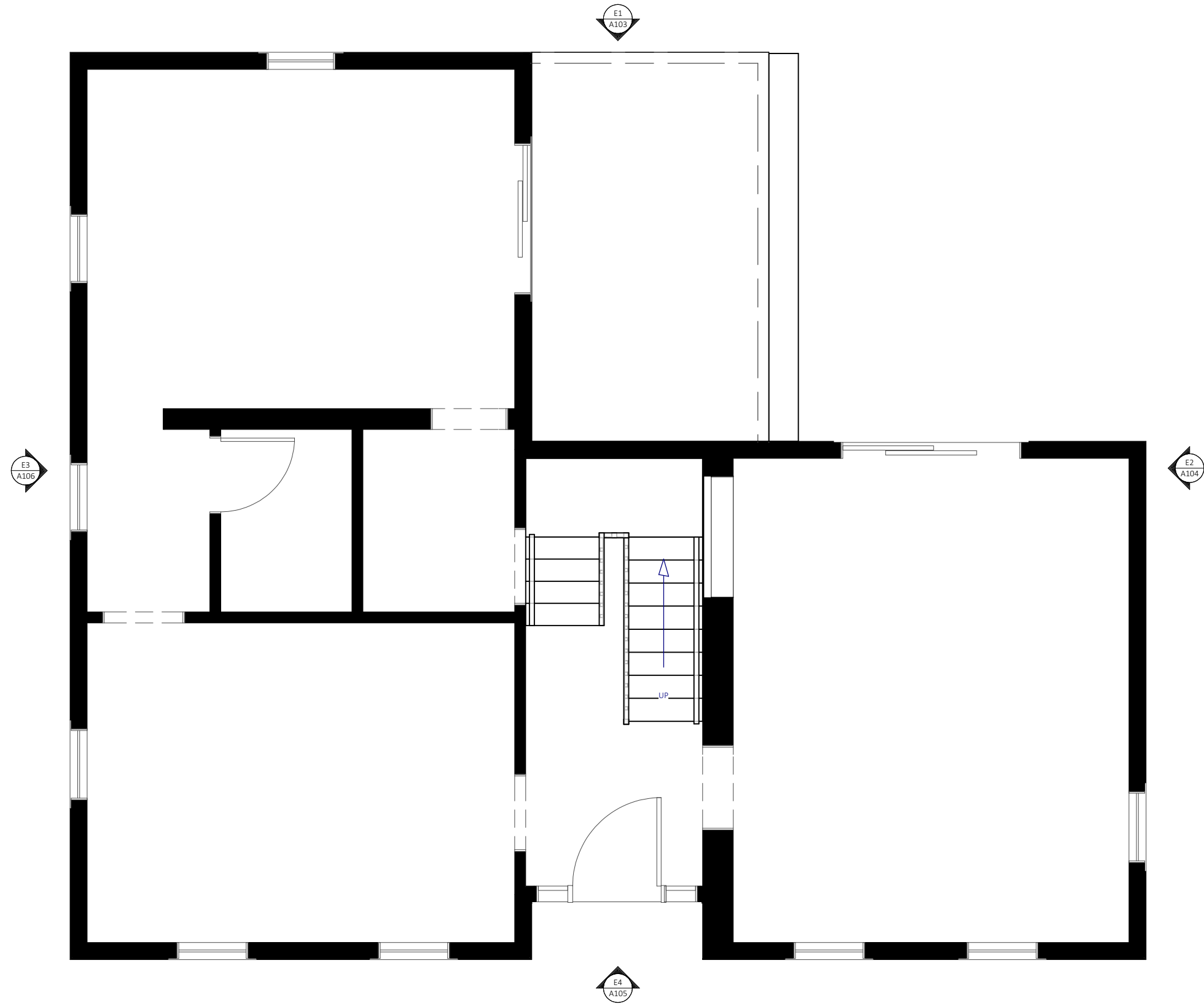


Revision Table		Revised By
Number	Date	

Drawings For: Dulac Residence
325 Marcy Street
Portsmouth, NH 03801
Existing Renderings

Date: 3/31/26
Scale: NO SCALE
Drawings Issued For: Conceptual Design

Drawings Provided By:
Dockham Builders
676 Portsmouth Ave
Greenland, NH



EXISTING CONDITIONS
 1/4 IN = 1 FT



Revision Table		Revised By
Number	Date	

Drawings For: **Dulac Residence**
 325 Marcy Street
 Portsmouth, NH 03801
 Existing Conditions- Plan

Date: **3/31/26**
 Scale: **1/2" = 1' 0"**
 Drawings Issued For: **Conceptual Design**

Drawings Provided By:
Dockham Builders
 676 Portsmouth Ave
 Greenland, NH

A102



E1 **ELEVATION 1**
1/4 IN = 1 FT



Revision Table		Revised By
Number	Date	

Drawings For: Dulac Residence
325 Marcy Street
Portsmouth, NH 03801
Existing- Elevation 1

Date: 3/31/26
Scale: 1/4" = 1' 0"
Drawings Issued For: Conceptual Design

Drawings Provided By:
Dockham Builders
676 Portsmouth Ave
Greenland, NH

A103



E2 **ELEVATION 2**
 1/4 IN = 1 FT



Revision Table		Revised By
Number	Date	

Drawings For: **Dulac Residence**
 325 Marcy Street
 Portsmouth, NH 03801
 Existing- Elevation 2

Date: **3/31/26**
 Scale: **1/4" = 1' 0"**
 Drawings Issued For: **Conceptual Design**

Drawings Provided By:
Dockham Builders
 676 Portsmouth Ave
 Greenland, NH

A104



E4 ELEVATION 4
1/4 IN = 1 FT



Revision Table		Revised By
Number	Date	

Drawings For: Dulac Residence
325 Marcy Street
Portsmouth, NH 03801
Existing- Elevation 3

Date: 3/31/26
Scale: 1/4" = 1' 0"
Drawings Issued For: Conceptual Design

Drawings Provided By:
Dockham Builders
676 Portsmouth Ave
Greenland, NH

A105



E3 **ELEVATION 3**
 1/4 IN = 1 FT



Revision Table		Revised By
Number	Date	

Drawings For: Dulac Residence
 325 Marcy Street
 Portsmouth, NH 03801
 Existing - Elevation 4

Date: 3/31/26
 Scale: 1/4" = 1' 0"
 Drawings Issued For: Conceptual Design

Drawings Provided By:
 Dockham Builders
 676 Portsmouth Ave
 Greenland, NH

A106



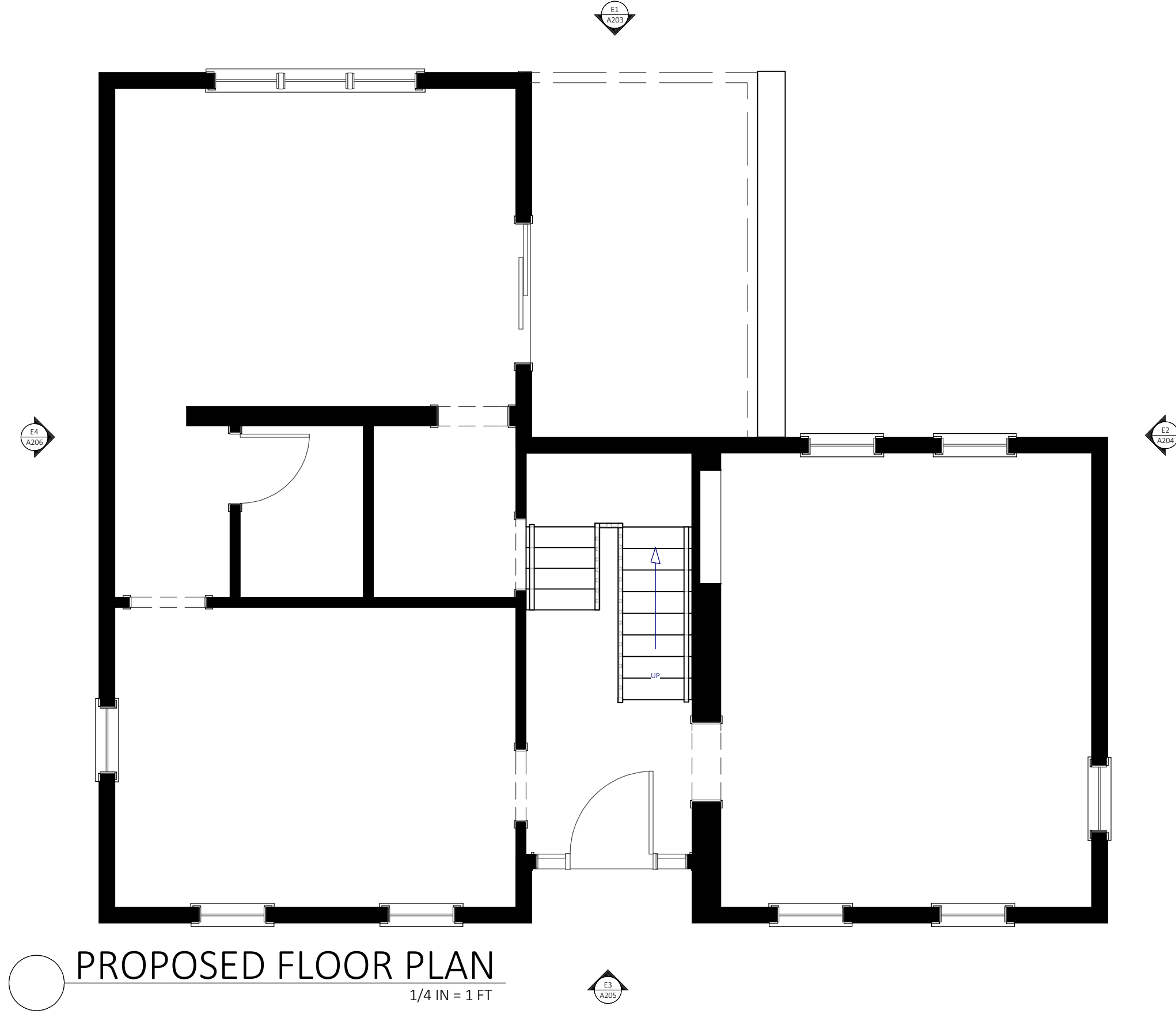
Revision Table		Revised By
Number	Date	

Drawings For: Dulac Residence
 325 Marcy Street
 Portsmouth, NH 03801
 Proposed Renderings

Date: 3/31/26
 Scale: 1/4" = 1' 0"
 Drawings Issued For: Conceptual Design

Drawings Provided By:
 Dockham Builders
 676 Portsmouth Ave
 Greenland, NH

A201



Revision Table		Revised By
Number	Date	

Drawings For: Dulac Residence
 325 Marcy Street
 Portsmouth, NH 03801
 Proposed Floor Plan

Date: 3/31/26
 Scale: 1/4" = 1' 0"
 Drawings Issued For: Conceptual Design

Drawings Provided By:
 Dockham Builders
 676 Portsmouth Ave
 Greenland, NH

A202

Number	Date	Revised By

Drawings For: Dulac Residence
325 Marcy Street
Portsmouth, NH 03801
Proposed - Elevation 1

Date: 3/31/26
Scale: 1/4" = 1' 0"
Drawings Issued For: Conceptual Design

Drawings Provided By:
Dockham Builders
676 Portsmouth Ave
Greenland, NH

A203



ELEVATION 1
1/4 IN = 1 FT




ELEVATION 2
 1/4 IN = 1 FT

Revision Table		Revised By
Number	Date	

Drawings For: **Dulac Residence**
 325 Marcy Street
 Portsmouth, NH 03801
 Proposed - Elevation 2

Date: **3/31/26**
 Scale: **1/4" = 1' 0"**
 Drawings Issued For: **Conceptual Design**

Drawings Provided By:
Dockham Builders
 676 Portsmouth Ave
 Greenland, NH



E3 ELEVATION 3
1/4 IN = 1 FT

Number	Date	Revised By

Drawings For: Dulac Residence
325 Marcy Street
Portsmouth, NH 03801
Proposed - Elevation 3

Date: 3/31/26
Scale: 1/4" = 1' 0"
Drawings Issued For: Conceptual Design

Drawings Provided By:
Dockham Builders
676 Portsmouth Ave
Greenland, NH



E4 ELEVATION 4
1/4 IN = 1 FT



Revision Table		Revised By
Number	Date	

Drawings For: Dulac Residence
325 Marcy Street
Portsmouth, NH 03801
Proposed - Elevation 4

Date: 3/31/26
Scale: 1/4" = 1' 0"
Drawings Issued For: Conceptual Design

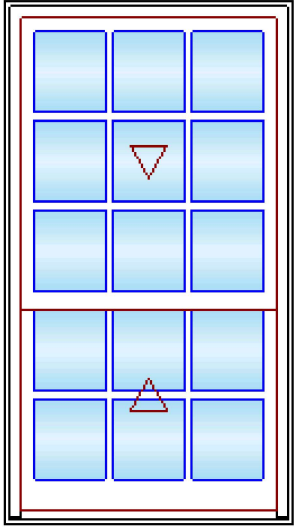
Drawings Provided By:
Dockham Builders
676 Portsmouth Ave
Greenland, NH

A206

Line #6	Mark Unit: W 104-105	Net Price:	
Qty: 2		Ext. Net Price:	USD



Stone White Clad Exterior
 Primed Pine Interior
 Ultimate Double Hung G2
 CN 2624
 Rough Opening 32 1/4" X 56"
 Reverse Cottage 3.0:5.0
 Top Sash
 Stone White Clad Sash Exterior
 Primed Pine Sash Interior
 G.S. 26" X 28 51/64"
 IG
 Low E2 w/Argon
 Silver Stainless Steel Perimeter and Spacer Bar
 7/8" SDL - With Spacer Bar - Silver
 Rectangular - Special Cut 3W3H



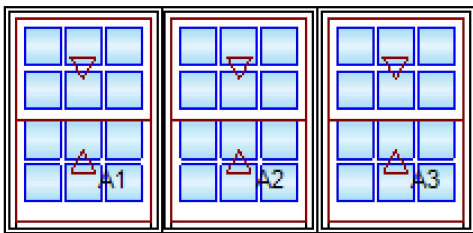
As Viewed From The Exterior

Entered As: CN
CN 2624
RO 32 1/4" X 56"
Egress Information
 No Egress Information available.
Performance Information
 U-Factor: 0.3
 Solar Heat Gain Coefficient: 0.27
 Visible Light Transmittance: 0.46
 Condensation Resistance: 55
 CPD Number: MAR-N-425-23552-00001
Performance Grade
 Licensee #1127
 AAMA/WDMA/CSA 101/I.S.2/A440-17
 LC-PG50 1149X2223 mm (45.3X87.5 in)
 Water Resistance: 7.52 psf
 LC-PG50 DP +50/-50
 FL17635

Stone White Clad Ext - Primed Pine Int
 Ogee Interior Glazing Profile
 Bottom Sash
 Stone White Clad Sash Exterior
 Primed Pine Sash Interior
 G.S. 26" X 19 13/64"
 IG
 Low E2 w/Argon
 Silver Stainless Steel Perimeter and Spacer Bar
 7/8" SDL - With Spacer Bar - Silver
 Rectangular - Special Cut 3W2H
 Stone White Clad Ext - Primed Pine Int
 Ogee Interior Glazing Profile
 White Interior Weather Strip Package
 White Exterior Weather Strip Package
 White Sash Lock
 White Top Sash Strike Plate Assembly Color
 Extruded Aluminum Screen
 Stone White Surround
 Bright View Mesh
 ***Screen/Combo Ship Loose
 4 9/16" Jambs
 AL Nailing Fin

*****Note: Unit Availability and Price is Subject to Change**

Line #7	Mark Unit: W 106	Net Price:	
Qty: 1		Ext. Net Price:	USD



As Viewed From The Exterior

Entered As: Size by Units
RO 76 3/4" X 36"
Egress Information A1, A2, A3
 Width: 21 21/32" Height: 12 11/16"
 Net Clear Opening: 1.91 SqFt
Performance Information A1, A2, A3
 U-Factor: 0.3
 Solar Heat Gain Coefficient: 0.27
 Visible Light Transmittance: 0.46
 Condensation Resistance: 55
 CPD Number: MAR-N-425-23552-00001
Performance Information OA
Performance Grade A1, A2, A3
 Licensee #1127
 AAMA/WDMA/CSA 101/I.S.2/A440-17
 LC-PG50 1149X2223 mm (45.3X87.5 in)
 Water Resistance: 7.52 psf
 LC-PG50 DP +50/-50
 FL17635

Stone White Clad Exterior
 Primed Pine Interior /
 3W1H - Rectangle Assembly
 Assembly Rough Opening
 76 3/4" X 36"
 Unit: A1
 Ultimate Double Hung G2
 CN 2014
 Rough Opening 26 1/4" X 36"
 Top Sash
 Stone White Clad Sash Exterior
 Primed Pine Sash Interior
 IG
 Low E2 w/Argon
 Silver Stainless Steel Perimeter and Spacer Bar
 7/8" SDL - With Spacer Bar - Silver
 Rectangular - Standard Cut 3W2H
 Stone White Clad Ext - Primed Pine Int
 Ogee Interior Glazing Profile
 Bottom Sash
 Stone White Clad Sash Exterior
 Primed Pine Sash Interior
 IG
 Low E2 w/Argon
 Silver Stainless Steel Perimeter and Spacer Bar
 7/8" SDL - With Spacer Bar - Silver
 Rectangular - Standard Cut 3W2H
 Stone White Clad Ext - Primed Pine Int

Performance Grade Mull

Licensee #1127
AAMA 450-10
LC-PG65 1149X1613 mm (45.25X63.5 in)
Water Resistance: 7.52 psf
LC-PG65 DP 65

Ogee Interior Glazing Profile
White Interior Weather Strip Package
White Exterior Weather Strip Package
White Sash Lock
White Top Sash Strike Plate Assembly Color
Aluminum Screen
Stone White Surround
Bright View Mesh
***Screen/Combo Ship Loose

Performance Grade Overall Assembly

Water Resistance: 7.52 psf
LC-PG50 DP +50/-50

Unit: A2.....

Ultimate Double Hung G2
CN 2014
Rough Opening 26 1/4" X 36"
Top Sash
Stone White Clad Sash Exterior
Primed Pine Sash Interior
IG
Low E2 w/Argon
Silver Stainless Steel Perimeter and Spacer Bar.....
7/8" SDL - With Spacer Bar - Silver.....
Rectangular - Standard Cut 3W2H
Stone White Clad Ext - Primed Pine Int
Ogee Interior Glazing Profile
Bottom Sash
Stone White Clad Sash Exterior
Primed Pine Sash Interior
IG
Low E2 w/Argon
Silver Stainless Steel Perimeter and Spacer Bar.....
7/8" SDL - With Spacer Bar - Silver.....
Rectangular - Standard Cut 3W2H
Stone White Clad Ext - Primed Pine Int
Ogee Interior Glazing Profile
White Interior Weather Strip Package
White Exterior Weather Strip Package
White Sash Lock
White Top Sash Strike Plate Assembly Color
Aluminum Screen
Stone White Surround
Bright View Mesh
***Screen/Combo Ship Loose

Unit: A3.....

Ultimate Double Hung G2
CN 2014
Rough Opening 26 1/4" X 36"
Top Sash
Stone White Clad Sash Exterior
Primed Pine Sash Interior
IG
Low E2 w/Argon
Silver Stainless Steel Perimeter and Spacer Bar.....
7/8" SDL - With Spacer Bar - Silver.....
Rectangular - Standard Cut 3W2H
Stone White Clad Ext - Primed Pine Int
Ogee Interior Glazing Profile
Bottom Sash
Stone White Clad Sash Exterior
Primed Pine Sash Interior
IG
Low E2 w/Argon
Silver Stainless Steel Perimeter and Spacer Bar.....
7/8" SDL - With Spacer Bar - Silver.....
Rectangular - Standard Cut 3W2H
Stone White Clad Ext - Primed Pine Int
Ogee Interior Glazing Profile
White Interior Weather Strip Package
White Exterior Weather Strip Package
White Sash Lock
White Top Sash Strike Plate Assembly Color
Aluminum Screen

Stone White Surround
Bright View Mesh
***Screen/Combo Ship Loose
Standard Mull Charge.....
4 9/16" Jambs
Nailing Fin
***Note: This configuration meets a minimum structural performance of DP 20
through either physical testing or calculations in accordance with AAMA 450 and
building code requirements. Mull certification ratings may vary from individual
unit certification ratings. Reference the mulling chapter of the ADM for
additional information.
*****Note: Unit Availability and Price is Subject to Change**

Project Subtotal Net Price: USD
0.000% Sales Tax: USD
Project Total Net Price: USD

325





325















