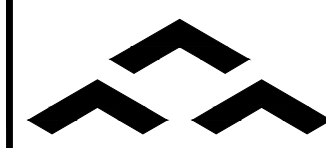


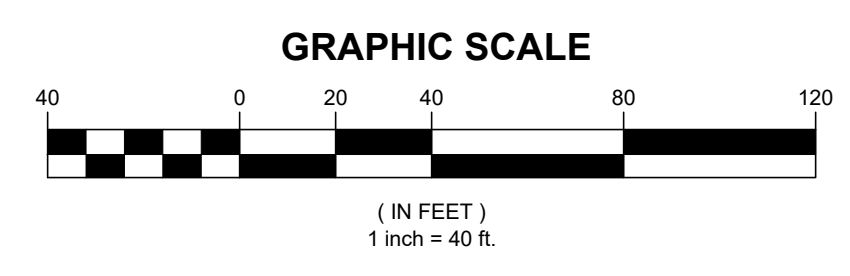
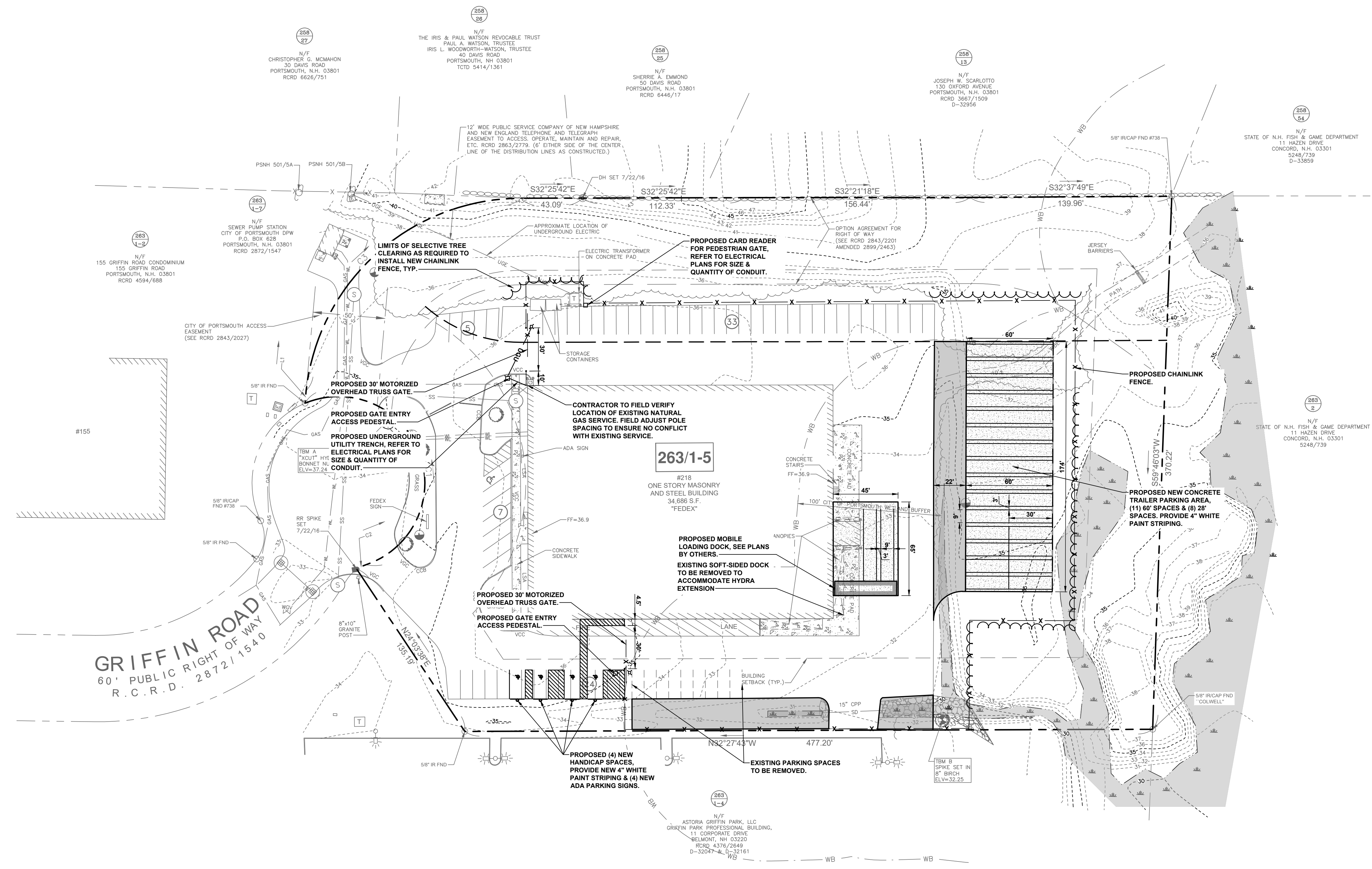
**LOCATION MAP:** USGS QUADRANGLE: PORTSMOUTH  
 MAPTECH® USGS TOPOGRAPHIC SERIES™  
 ©MAPTECH®, INC. 978-933-3000  
 WWW.MAPTECH.COM/TOPO

**LEGEND:**

DESCRIPTION	EXISTING	PROPOSED
PROPERTY LINE	---	---
BENCHMARK	⊕	⊕
SURVEY STATION	⊙	⊙
MANHOLE	⊕	⊕
UTILITY POLE	⊕	⊕
WELL	⊕	⊕
WATER VALVE	⊕	⊕
SIGN	⊕	⊕
CATCH BASIN	⊕	⊕
HYDRANT	⊕	⊕
EDGE OF GRAVEL	---	---
EDGE OF PAVEMENT	---	---
MAJOR FOOT CONTOUR	---100---	100
MINOR FOOT CONTOUR	---98---	98
WATERLINE	W	W
STORM DRAIN	SD	SD
SANITARY SEWER	SS	SS
OVERHEAD UTILITIES	OHU	OHU
UNDERGROUND UTILITIES	UGU	UGU
CHAIN LINK FENCE	X	X
SILT FENCE	---	SF
TREE LINE	---	---
GRAVEL SURFACE	---	---
PAVED SURFACE	---	---

**PLAN REFERENCE:**  
 INFORMATION BASED ON A PLAN ENTITLED 'FEDEX DISTRIBUTION CENTER - 218 GRIFFIN ROAD, PORTSMOUTH, NH - EXISTING CONDITIONS PLAN' PREPARED BY HALEY WARD, INC. AND DATED MARCH 2026.

No.	DATE	DESCRIPTION	BY	CHK
DRAWING ISSUE STATUS				
SITE SURVEY				
 <b>HALEY WARD</b> WWW.HALEYWARD.COM 200 Griffin Rd, Unit 14 Portsmouth, New Hampshire 03801 603.430.9282				
PROJECT				
<b>FEDEX PORTSMOUTH EXPANSION</b> 218 GRIFFIN ROAD, PORTSMOUTH, NH				
TITLE				
<b>PROPOSED SITE PLAN</b>				
DATE		SCALE		
2026.04.17		1"=40'		
DRAWN BY	DESIGNED BY	CHECKED BY		
PJM	PJM	DJO		
PROJECT No.				
10457.021				
SHEET No.				DWG No.
<b>C101</b>				-



**GRIFFIN ROAD**  
 60' PUBLIC RIGHT OF WAY  
 R.C.R.D. 2872/1540

**263/1-5**

#218  
 ONE STORY MASONRY  
 AND STEEL BUILDING  
 34,686 S.F.  
 "FEDEX"

**PROPOSED NEW CONCRETE  
 TRAILER PARKING AREA**  
 (11) 60' SPACES & (8) 28'  
 SPACES. PROVIDE 4" WHITE  
 PAINT STRIPING.

**PROPOSED (4) NEW  
 HANDICAP SPACES,**  
 PROVIDE NEW 4" WHITE  
 PAINT STRIPING & (4) NEW  
 ADA PARKING SIGNS.

**EXISTING PARKING SPACES  
 TO BE REMOVED.**

**GRAPHIC SCALE**