



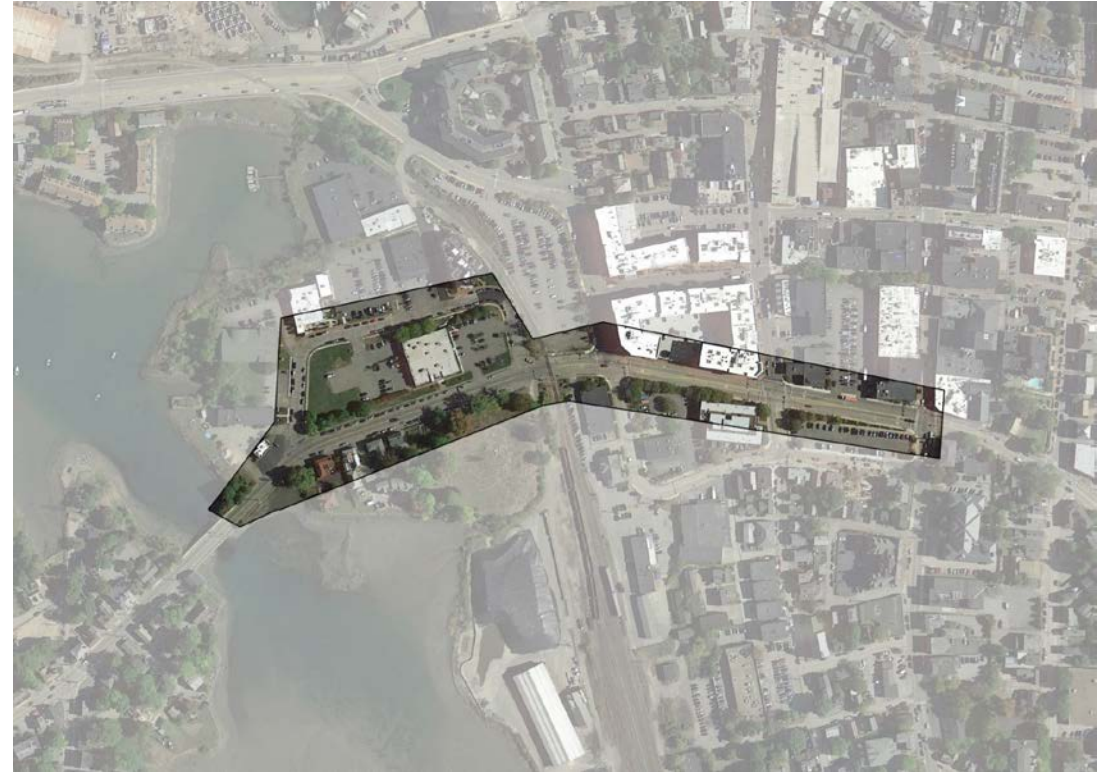
Maplewood Avenue Downtown

Complete Street Project

Initial Public Meeting
November 13, 2017

Agenda

- Welcome and Introductions
- Project Overview
 - Project Area and Scope
 - Transportation Context
 - Design Context
 - Existing Conditions
- Finding Balanced Solutions
 - Circulation and Modes
 - Streetscape Character
- Breakout Groups – Provide Us with Your Thoughts!
- Next Steps



Welcome and Introduction of Project Team

City Planning and Public Works Staff

Design Team



City of Portsmouth – Planning Director
Juliet Walker
Project Manager

David Moore
Assistant City Manager and Director of Community Development

Eric Eby
Parking and Transportation Engineer

Dave Desfosses
Public Works Project Manager



SEBAGO TECHNICS - Traffic and Roadway Engineers
Stephen S. Sawyer, Jr.
Consultant Project Manager



HARRIMAN – Streetscape Design
Steven G. Cecil
Lead Designer



Howard Snyder
Landscape Architect



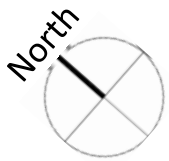
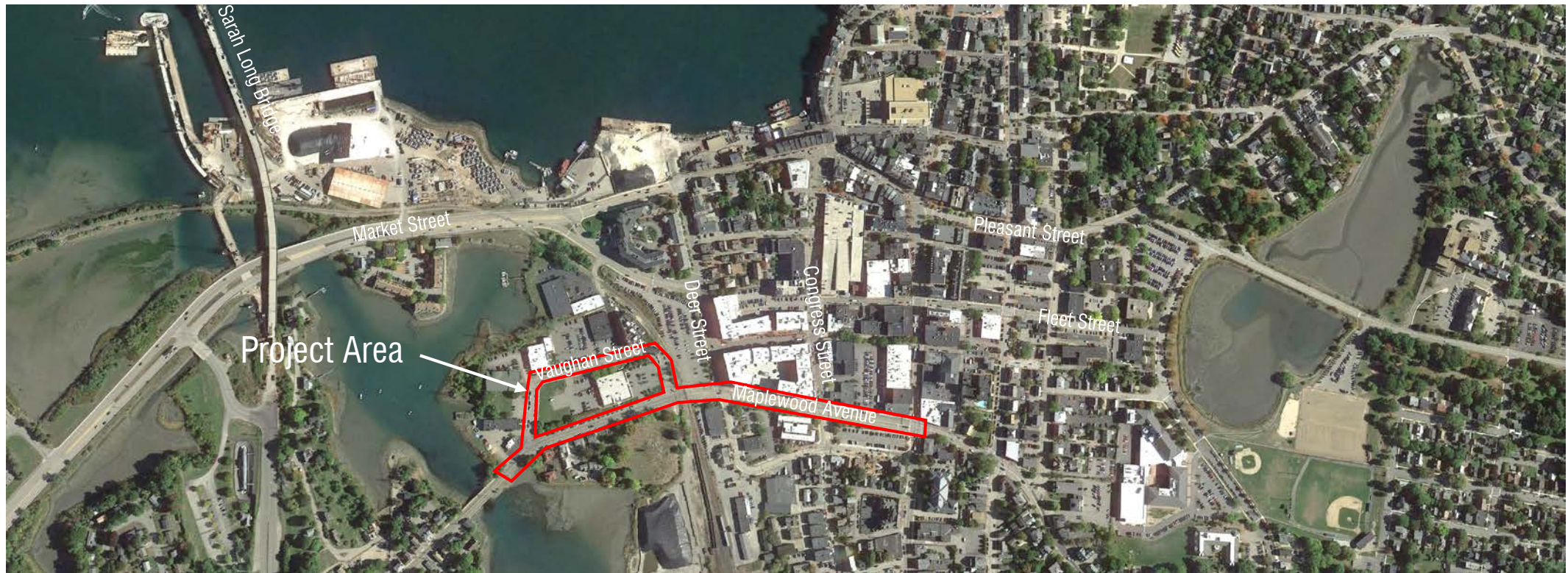
ALTA PLANNING + DESIGN - Bicycle and Pedestrian
Phil Goff

ALTUS ENGINEERING - Utility and Permitting
Eric Weinrieb



Project Overview

Project Area and its Context



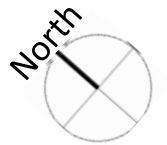
Project Overview

Project Area



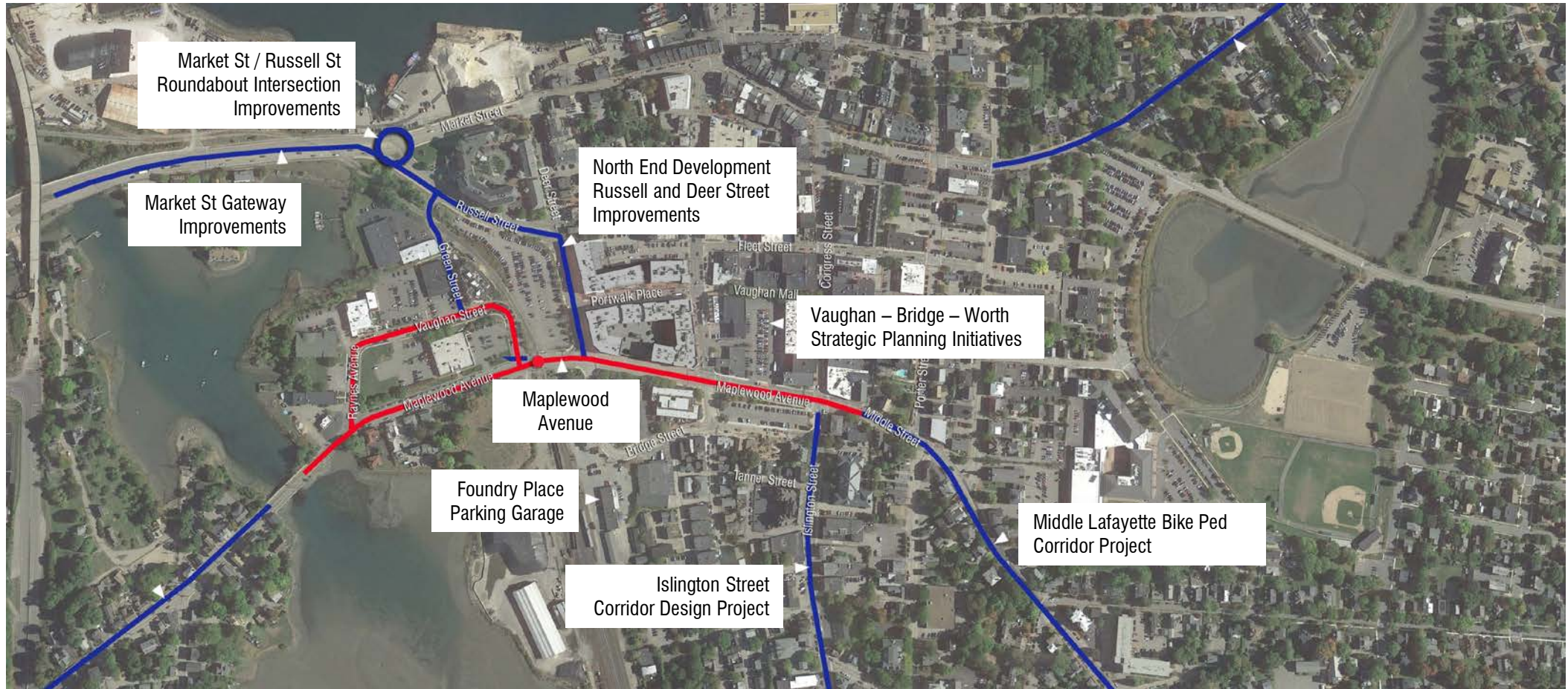
Project Scope:

- Improvements within the public right-of-way
- Coordination with adjacent parcels and projects



Project Overview

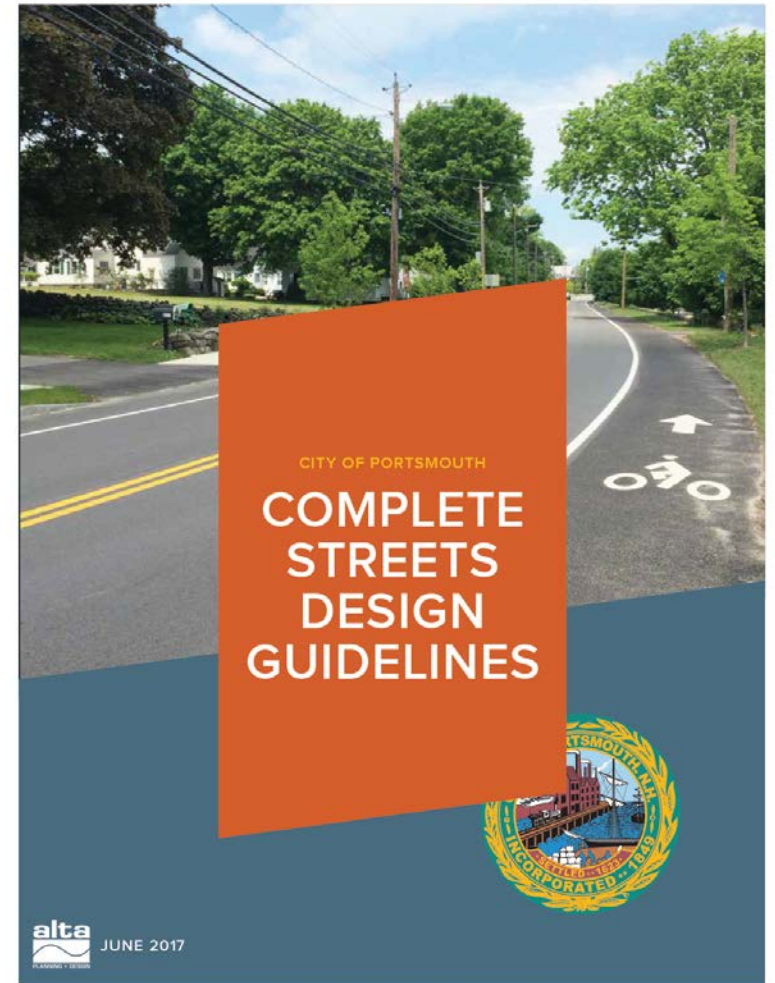
Project Area – Coordination with Adjacent Parcels and Projects



Project Overview

Municipal Transportation Initiatives

- *Complete Streets Design Guidelines, 2017*
- *Maplewood Avenue Complete Street Study, 2014*
- *Portsmouth Bicycle and Pedestrian Plan, 2014*



Project Overview

Municipal Open Space and Connectivity Initiatives



City of Portsmouth,
New Hampshire



Islington Street Corridor Improvement Action Plan

Action Plan Matrix



completed: December, 2009

commissioned by:

Economic Development Commission, City of Portsmouth, NH
Art-Speak, Cultural Commission, City of Portsmouth, NH

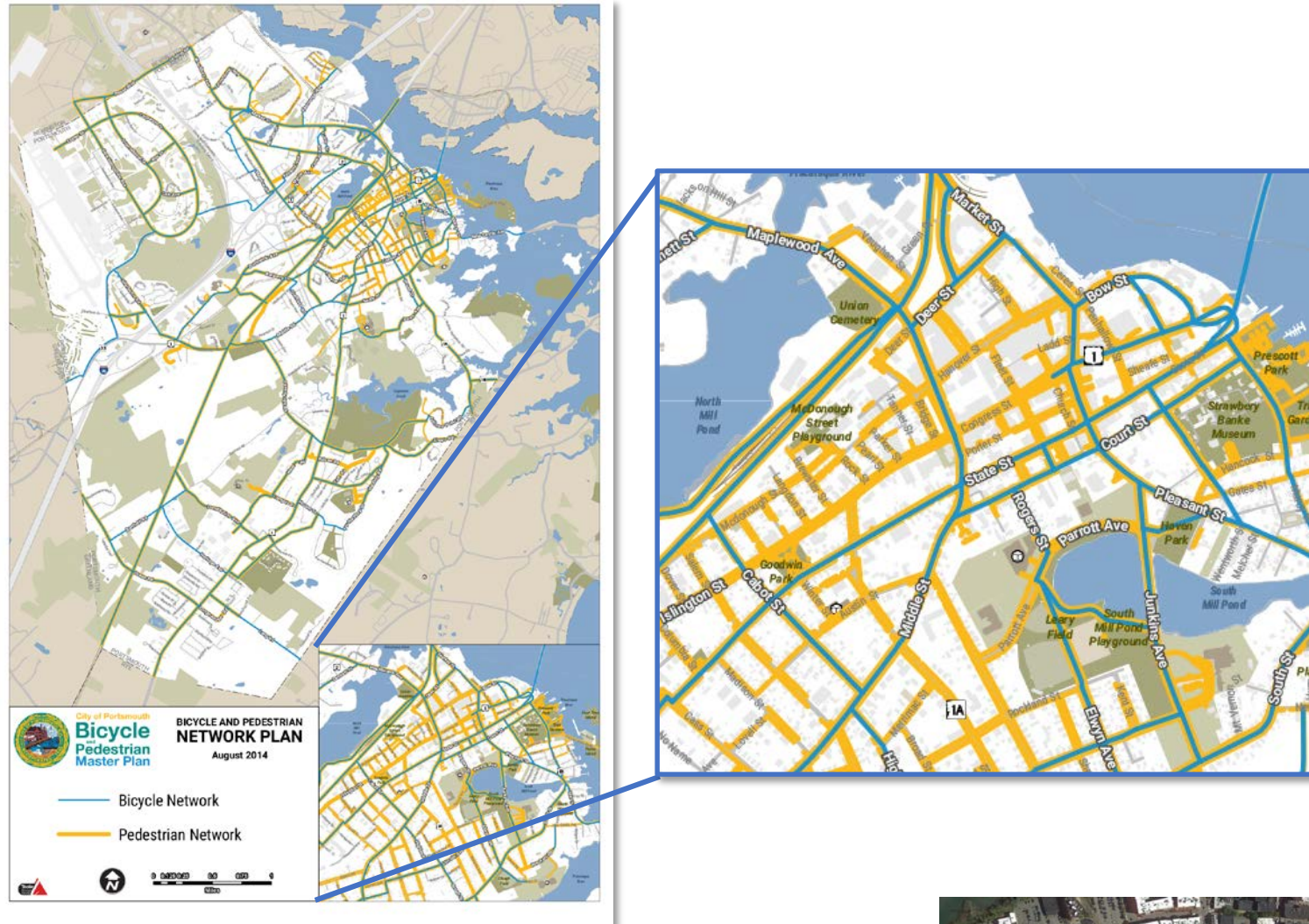
submitted by:

Richardson & Associates, Landscape Architects, Saco, ME
Evan Haynes, Public Art Consultant, North Yarmouth, ME



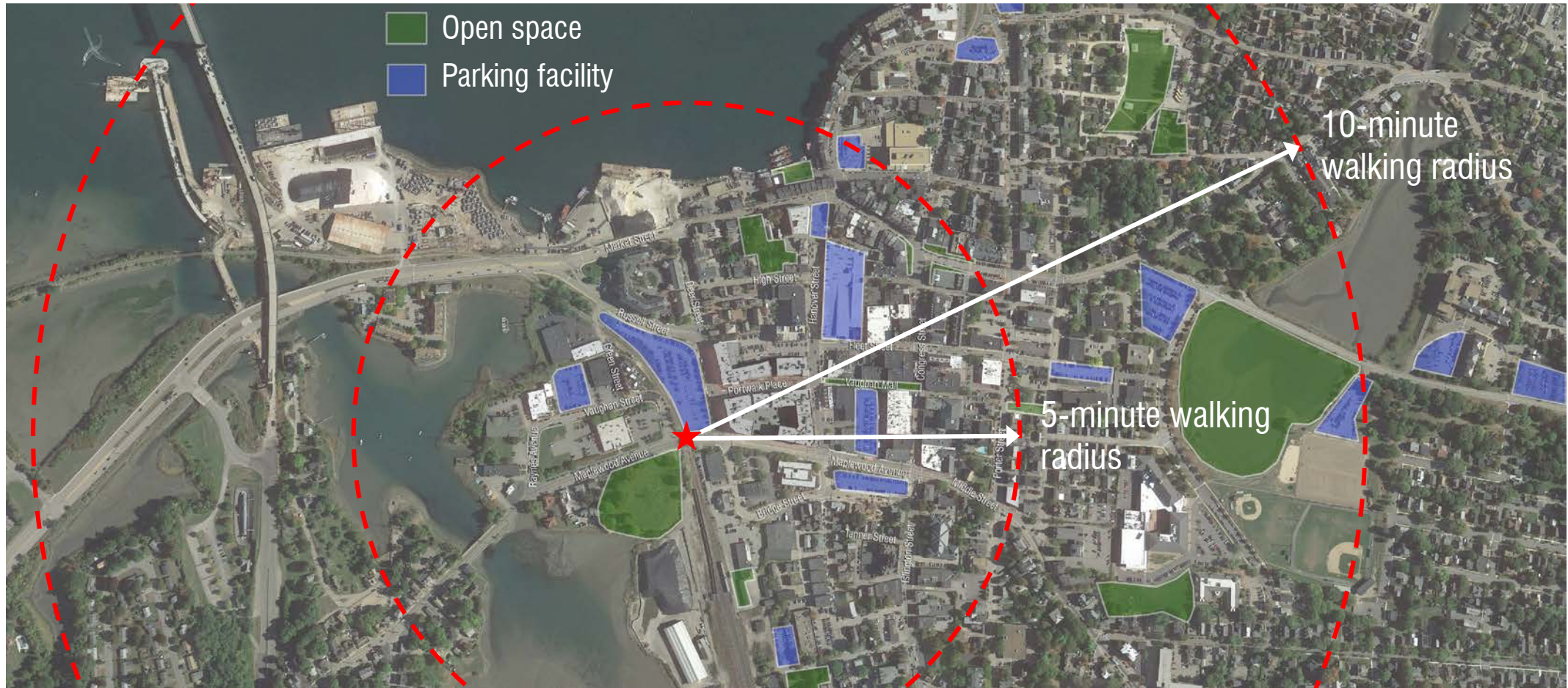
Project Overview

Transportation Context- Pedestrian Network and Bicycle Network



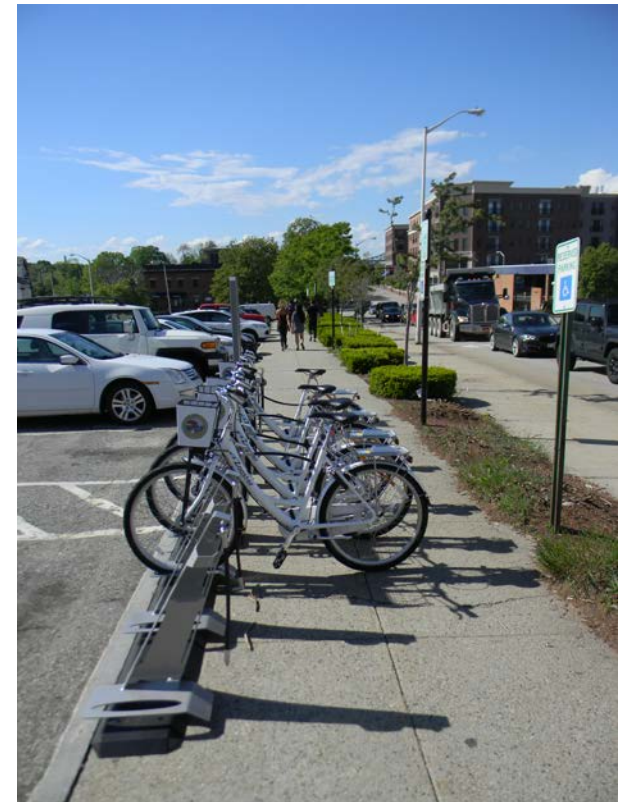
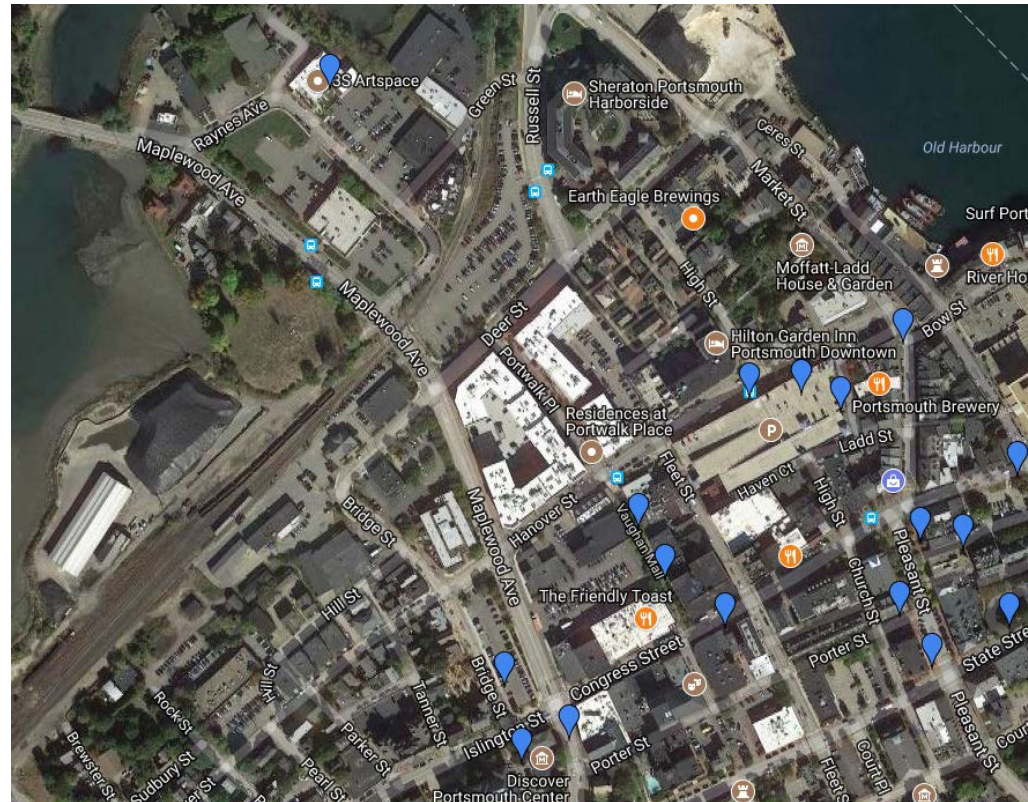
Project Overview

Transportation Context – Walkability and Distances



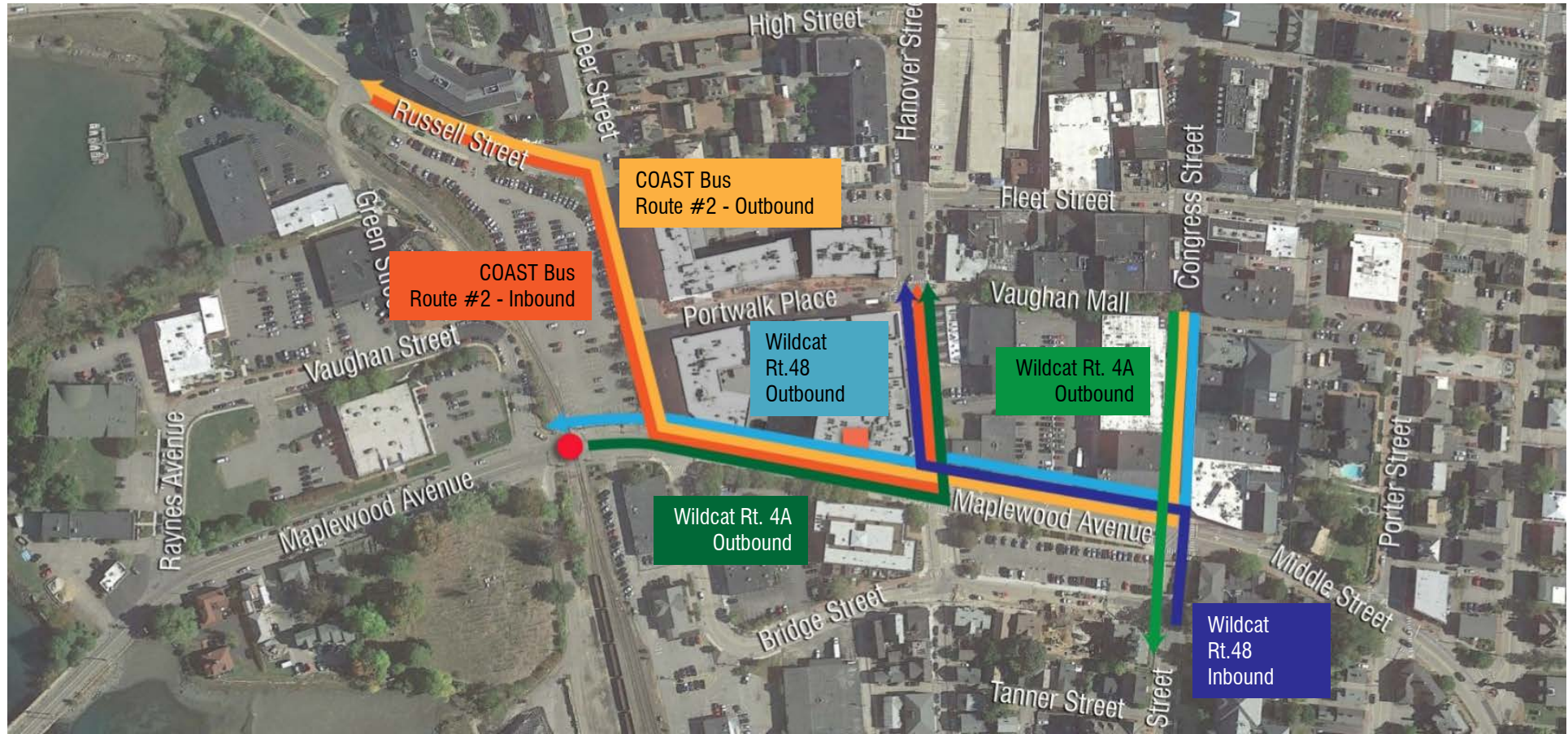
Project Overview

Transportation Context – Bike Share Locations



Project Overview

Transportation Context – Transit Routes



Project Overview

Historic Context



Project Overview

Urban Design Context - the Downtown



Project Overview

Urban Design Context - Downtown



Project Overview

Urban Design Context - Neighborhoods

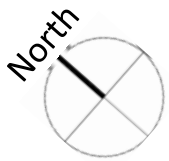


Urban Design Context - Rail Right-of-Way



Project Context

Private Development Projects



Project Context

Private Development Projects



30 Maplewood Avenue



45 Maplewood Avenue



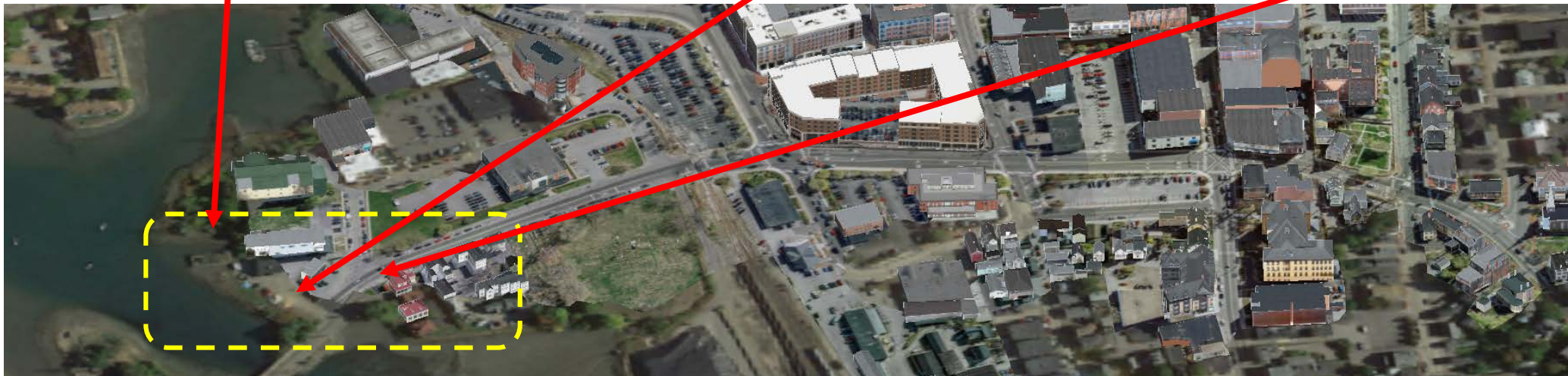
Project Context

Private Development Projects



Project Overview

Existing Conditions *Bridge Transition*



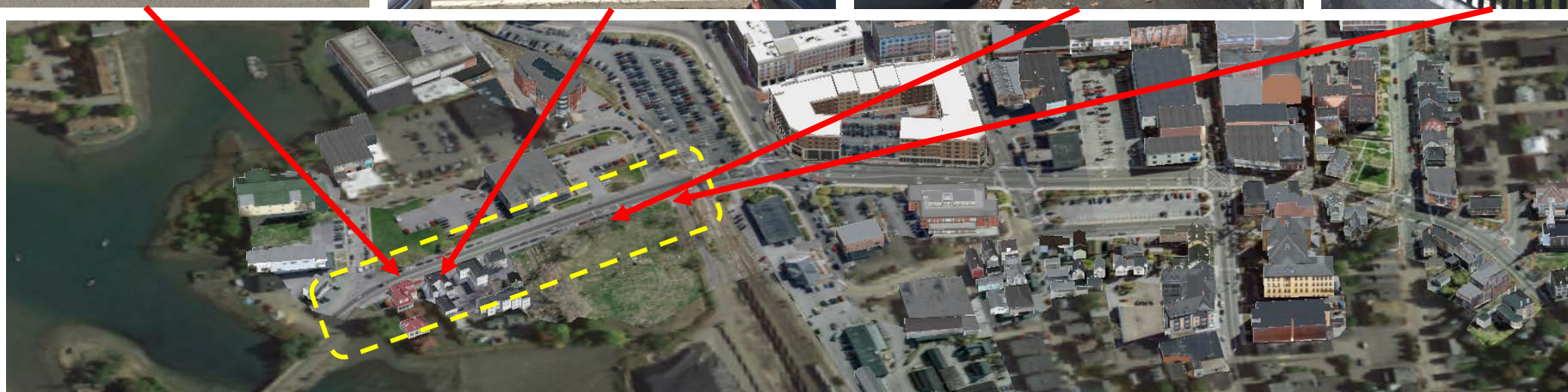
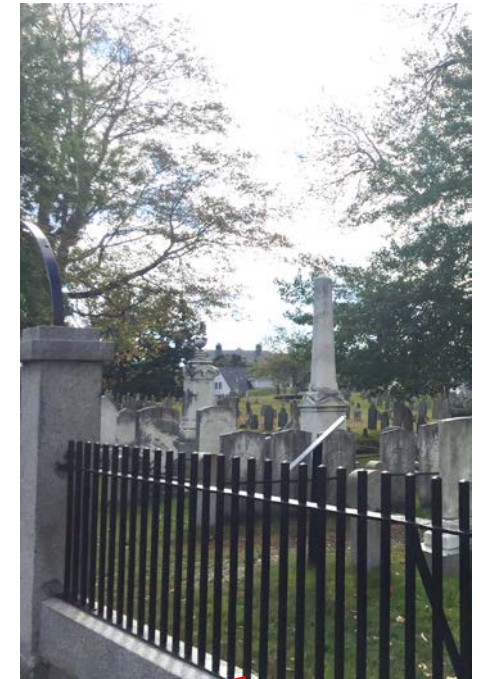
Project Overview

Existing Conditions *Multiple Images*



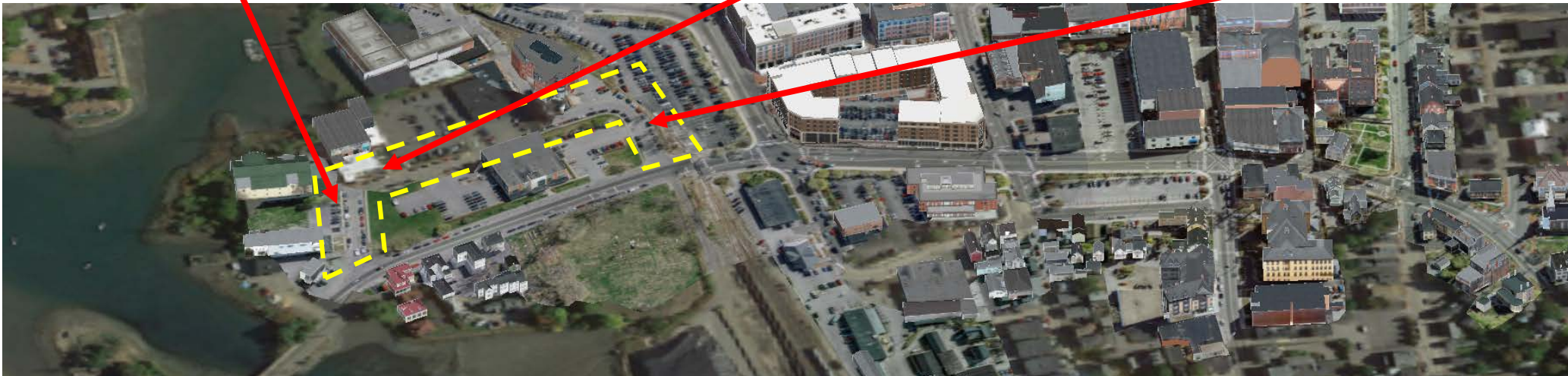
Project Overview

Existing Conditions *Historic Border*



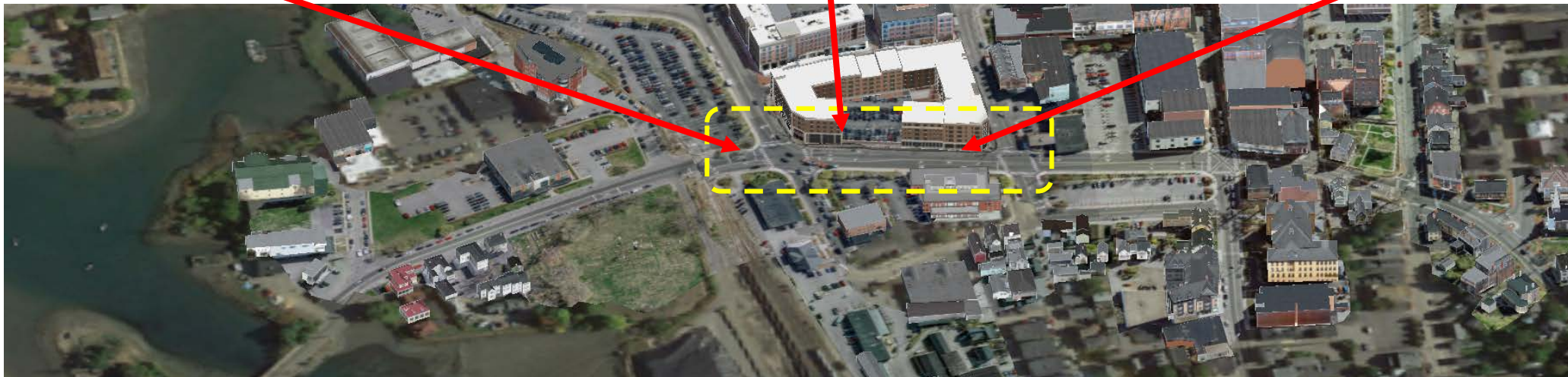
Project Overview

Existing Conditions *Changing Loop*



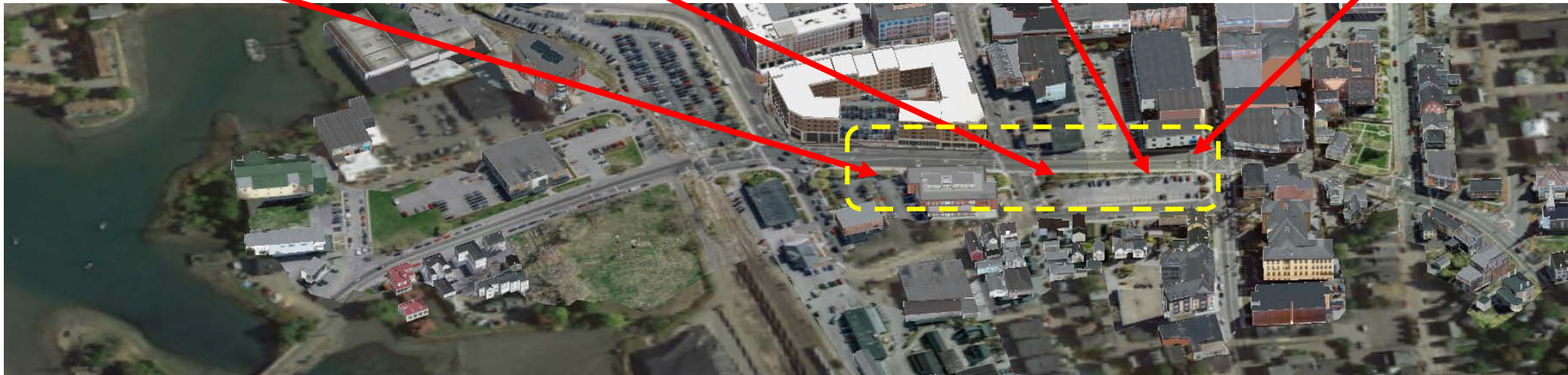
Project Overview

Existing Conditions *Urban Edge*



Project Overview

Existing Conditions *Transition Segment*



Developing a Balance

Design Parameters and Needs

- Vehicular traffic – 25% increase expected from new development
- Transit – COAST and Wildcat
- Bicycle routes – City wide network
- Pedestrian circulation – Walking to and between destinations
- Historic District – Regulatory requirements



Developing a Balance

Precedents for Downtown Street Design



Congress Street, Portsmouth



Developing a Balance

Precedents for Downtown Street Design

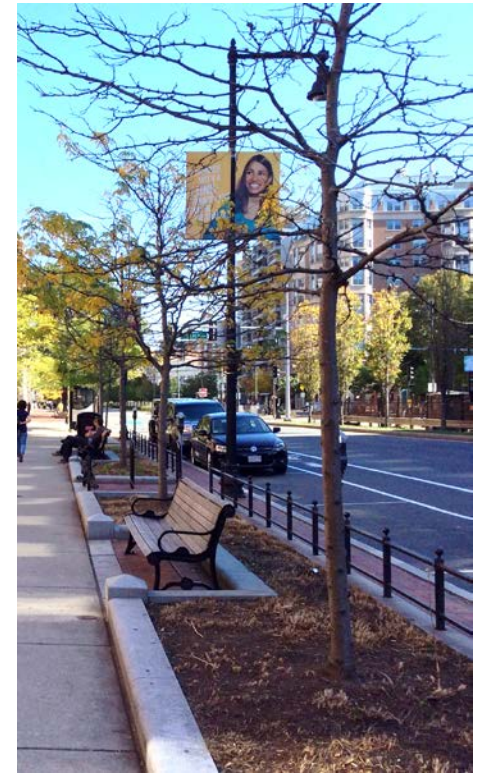


Portwalk Place, Portsmouth



Developing a Balance

Precedents for Downtown Street Design



Commonwealth Avenue, Boston



Developing a Balance

Precedents for Downtown Street Design

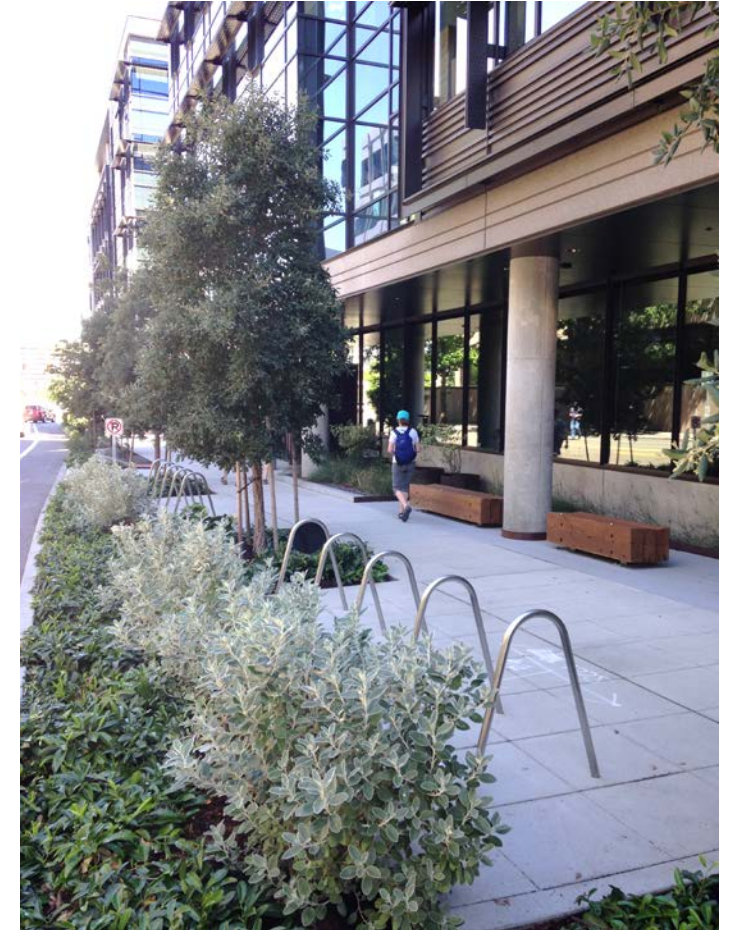


Newburyport, Massachusetts



Developing a Balance

Precedents for Downtown Street Design



Seattle, Washington

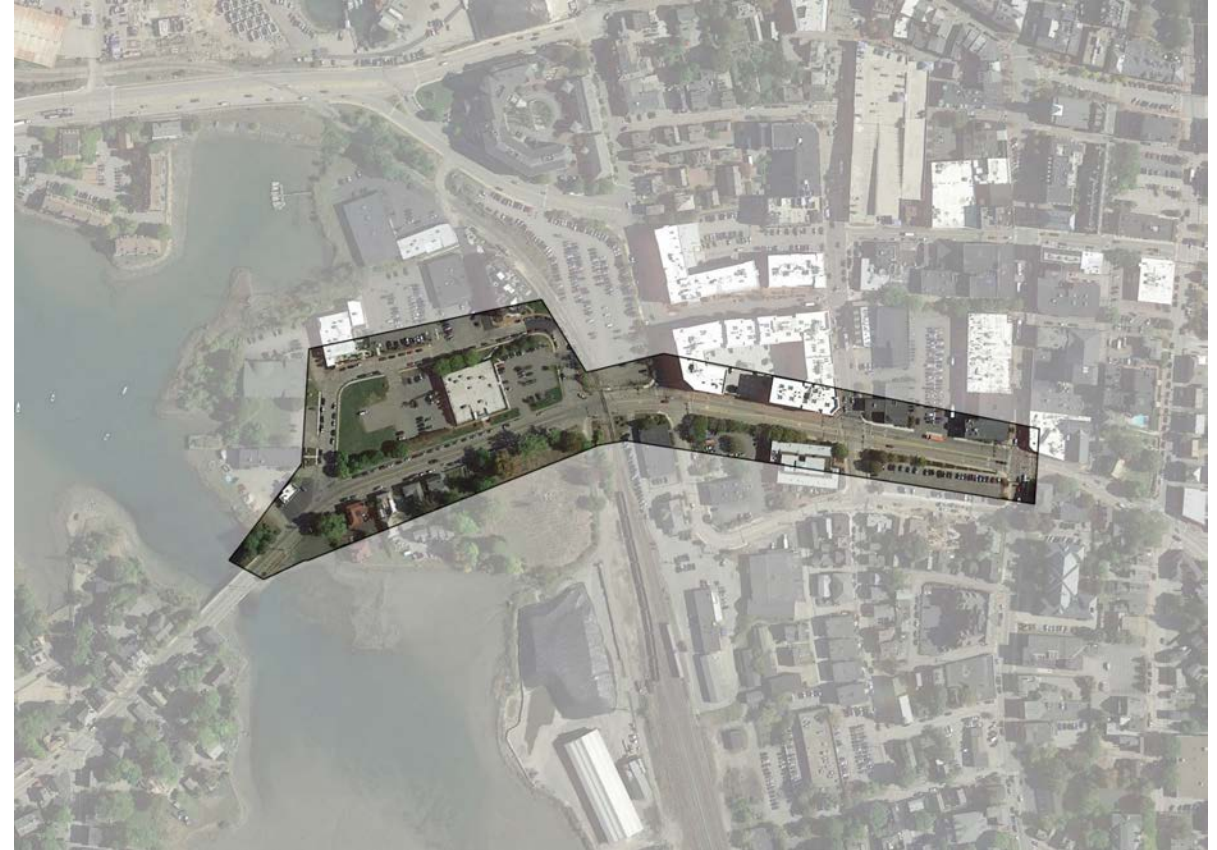


Breakout Discussions

Provide Us With Your Insights

How do You See Maplewood Avenue?

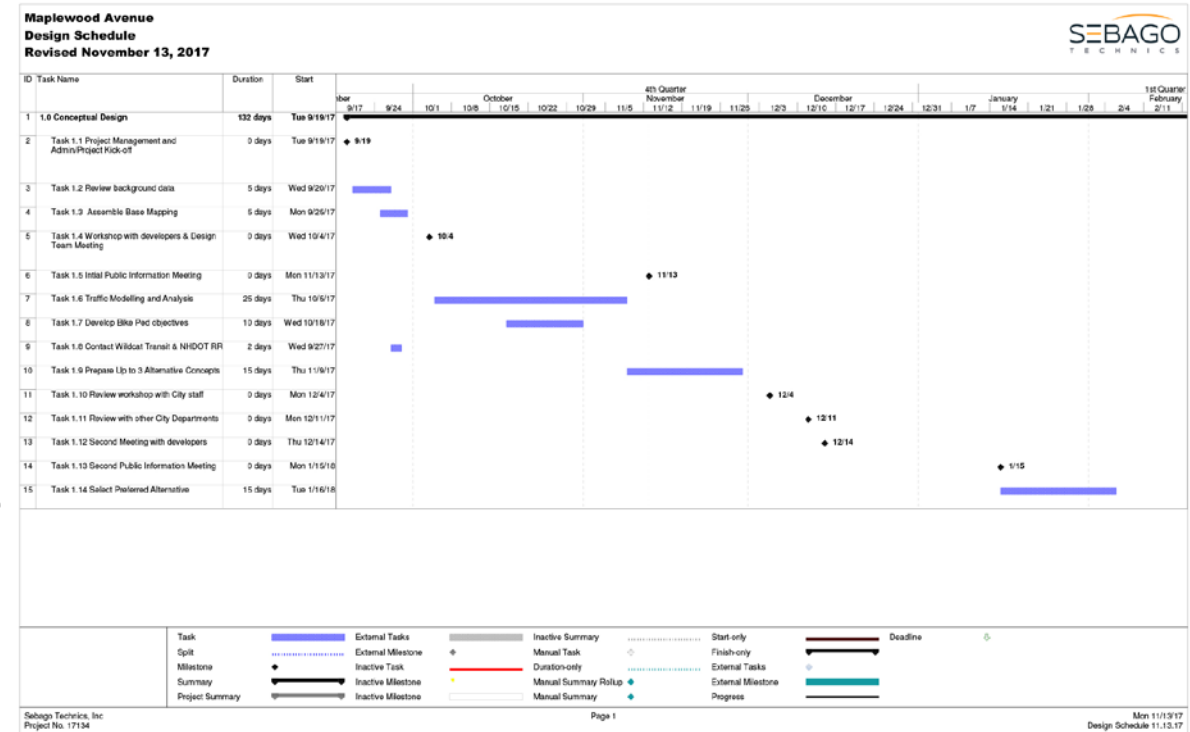
- Opportunities and challenges
- Important values and priorities
- Possible streetscape elements and locations



Next Steps

Schedule

- Project Start – September, 2017
- Stakeholder and Public Data Gathering - October and November
- Assessment and Development of Alternatives - November / December
- City and Public Review - December / January, 2018
- Preferred Streetscape Concept - February





Maplewood Avenue Downtown

Complete Street Project

Initial Public Meeting
November 13, 2017