

PREPARED FOR
 CITY OF PORTSMOUTH
 1 JUNKINS AVENUE
 PORTSMOUTH, NH

**ON-STREET BICYCLE FACILITY
 IMPROVEMENT PROJECT
 LAFAYETTE ROAD/MIDDLE STREET
 PORTSMOUTH, NH**

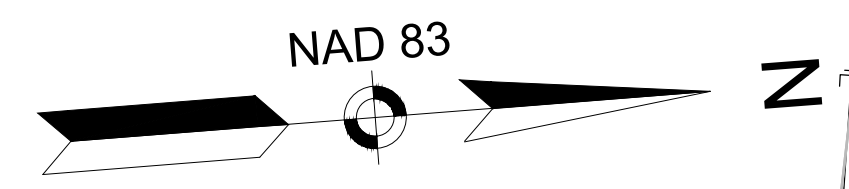
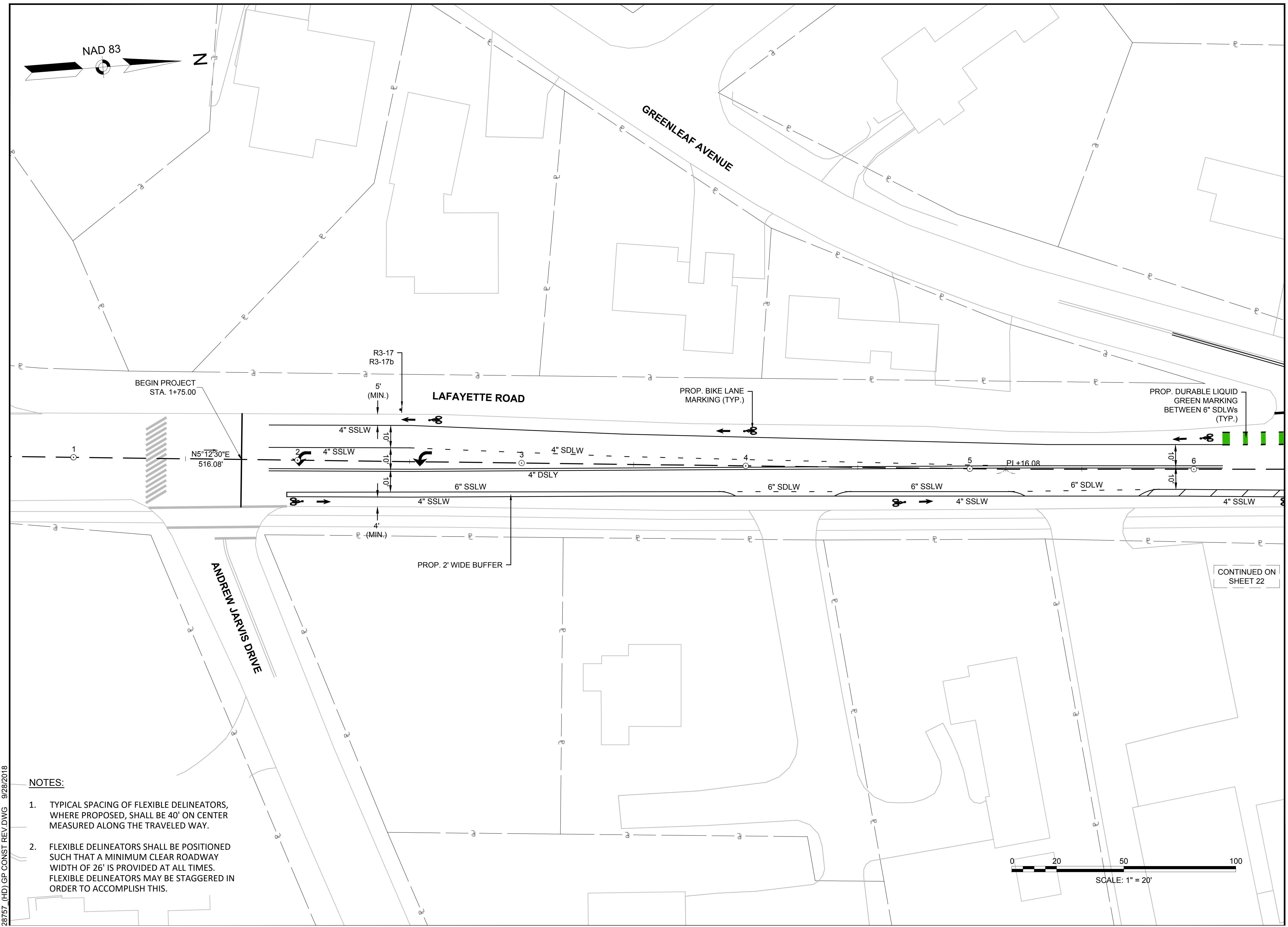
REVISIONS		
NO.	REVISION	DATE
5	PROJECT RE-BID	3/28/18
4	PROJECT RE-BID	2/7/18
3	NHDOT COMMENTS	11/7/17
2	FINAL DESIGN	7/28/17
1	PRELIMINARY DESIGN	10/14/16
07/28/2017		
DRAWN/DESIGN BY	CHECKED BY	
EMR	JPJ	

GENERAL PLANS

SCALE: 1"=20'

28757

21 OF 38



BEGIN PROJECT
 STA. 1+75.00

N5°12'30"E
 516.08'

R3-17
 R3-17b

5'
 (MIN.)

LAFAYETTE ROAD

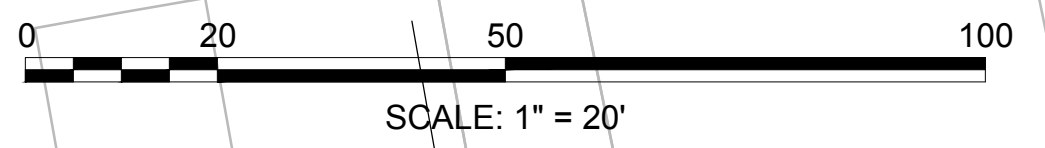
PROP. BIKE LANE
 MARKING (TYP.)

PROP. DURABLE LIQUID
 GREEN MARKING
 BETWEEN 6" SDLWs
 (TYP.)

PROP. 2' WIDE BUFFER

CONTINUED ON
 SHEET 22

- NOTES:**
1. TYPICAL SPACING OF FLEXIBLE DELINEATORS, WHERE PROPOSED, SHALL BE 40' ON CENTER MEASURED ALONG THE TRAVELED WAY.
 2. FLEXIBLE DELINEATORS SHALL BE POSITIONED SUCH THAT A MINIMUM CLEAR ROADWAY WIDTH OF 26' IS PROVIDED AT ALL TIMES. FLEXIBLE DELINEATORS MAY BE STAGGERED IN ORDER TO ACCOMPLISH THIS.



28757 (HD) GP CONST REV.DWG 9/28/2018

PREPARED FOR
 CITY OF PORTSMOUTH
 1 JUNKINS AVENUE
 PORTSMOUTH, NH

**ON-STREET BICYCLE FACILITY
 IMPROVEMENT PROJECT
 LAFAYETTE ROAD/MIDDLE STREET
 PORTSMOUTH, NH**

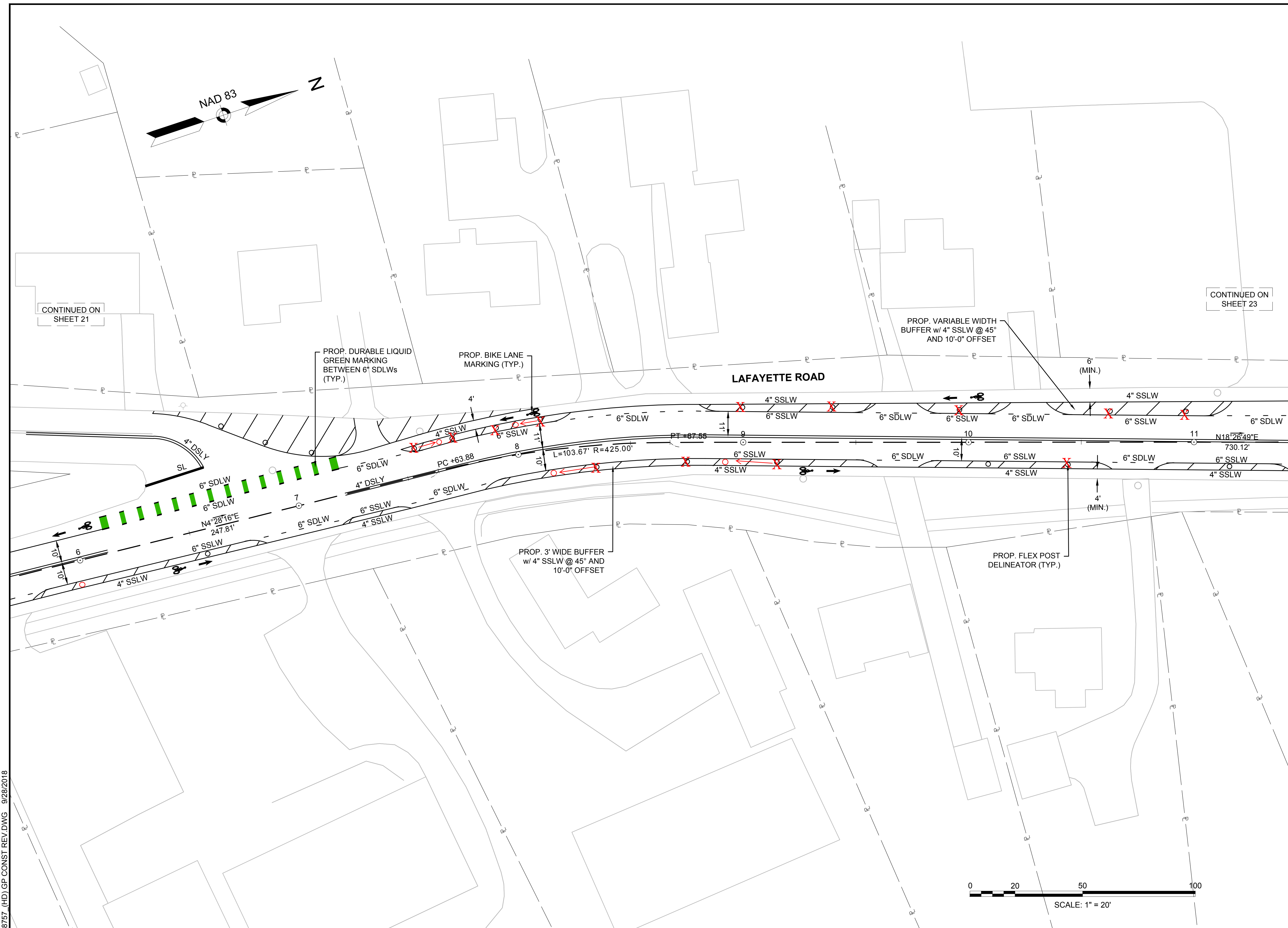
REVISIONS		
NO.	REVISION	DATE
6	FIELD ADJUSTMENTS	10/12/18
5	PROJECT RE-BID	3/28/18
4	PROJECT RE-BID	2/7/18
3	NHDOT COMMENTS	11/7/17
2	FINAL DESIGN	7/28/17
1	PRELIMINARY DESIGN	10/14/16
07/28/2017		
DRAWN/DESIGN BY	CHECKED BY	
EMR	JPJ	

GENERAL PLANS

SCALE: 1"=20'

28757

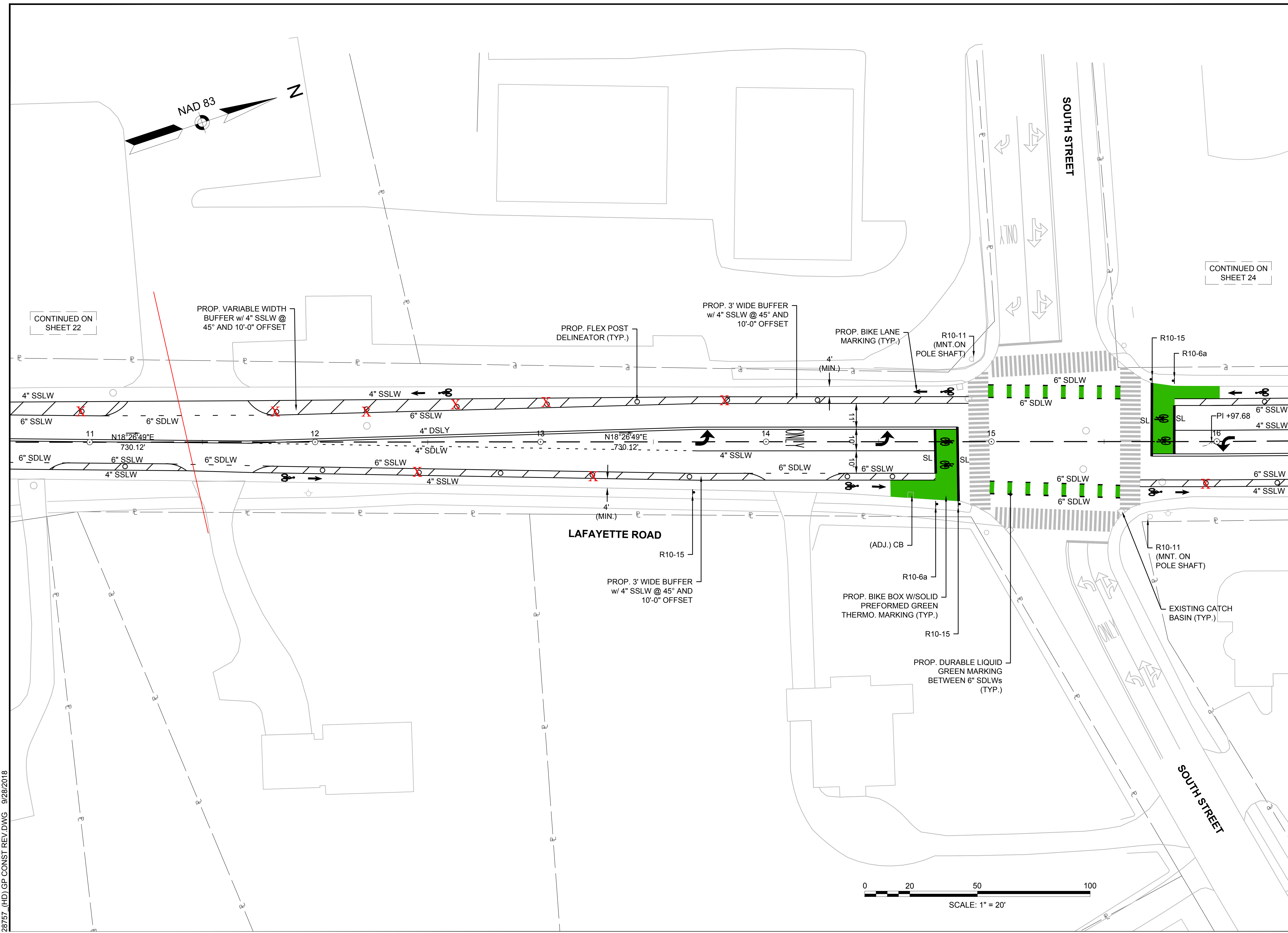
22 OF 38



28757 (HD) GP CONST REV.DWG 9/28/2018

**ON-STREET BICYCLE FACILITY
 IMPROVEMENT PROJECT
 LAFAYETTE ROAD/MIDDLE STREET
 PORTSMOUTH, NH**

REVISIONS		
NO.	REVISION	DATE
5	PROJECT RE-BID	3/28/18
4	PROJECT RE-BID	2/7/18
3	NHDOT COMMENTS	11/7/17
2	FINAL DESIGN	7/28/17
1	PRELIMINARY DESIGN	10/14/16
NO.	REVISION	DATE
07/28/2017		
DRAWN/DESIGN BY	CHECKED BY	
EMR	JPJ	



28757 (HD) GP CONST REV.DWG 9/28/2018

PREPARED FOR
 CITY OF PORTSMOUTH
 1 JUNKINS AVENUE
 PORTSMOUTH, NH

**ON-STREET BICYCLE FACILITY
 IMPROVEMENT PROJECT
 LAFAYETTE ROAD/MIDDLE STREET
 PORTSMOUTH, NH**

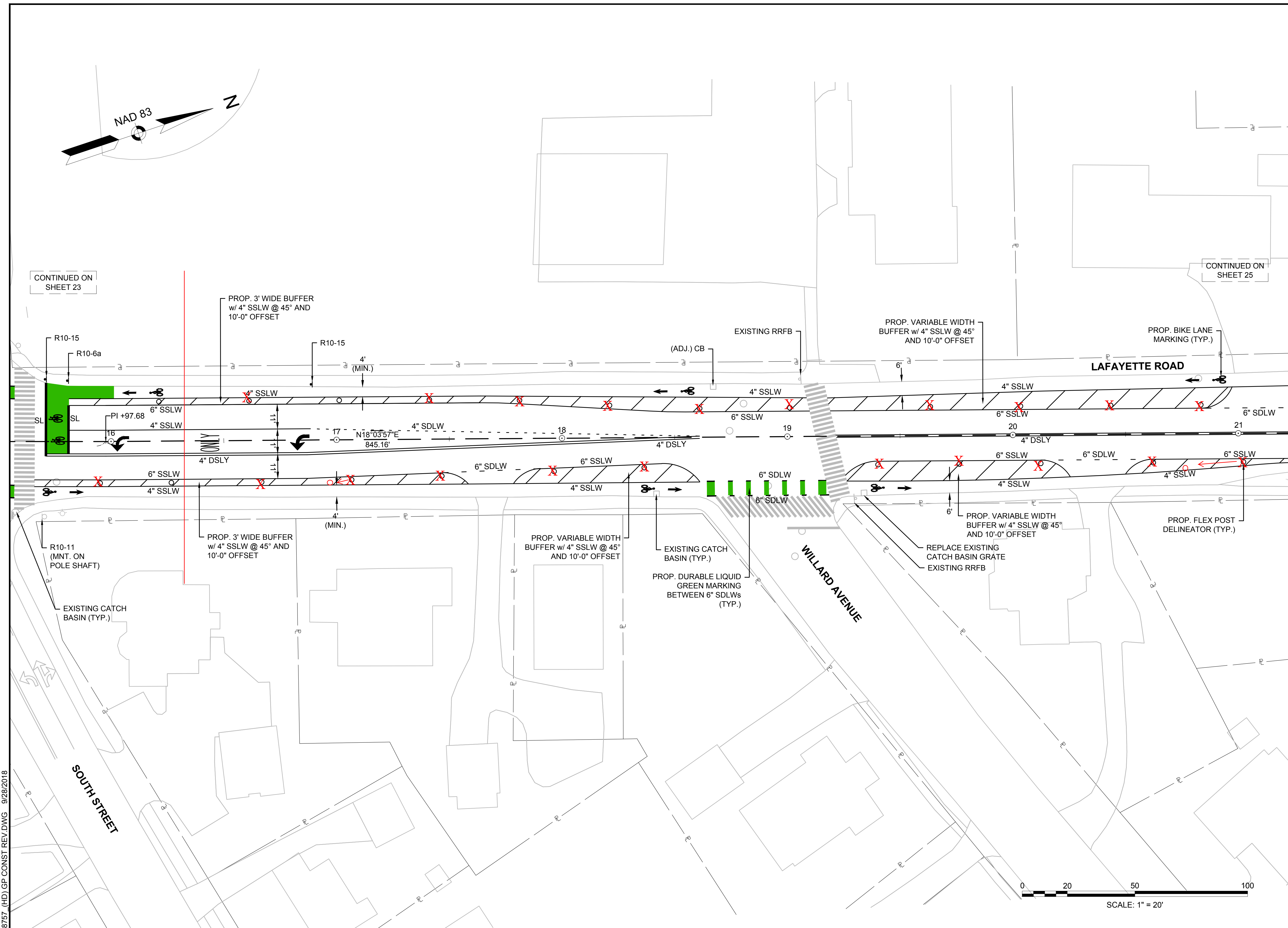
REVISIONS		
NO.	REVISION	DATE
5	PROJECT RE-BID	3/28/18
4	PROJECT RE-BID	2/7/18
3	NHDOT COMMENTS	11/7/17
2	FINAL DESIGN	7/28/17
1	PRELIMINARY DESIGN	10/14/16
07/28/2017		
DRAWN/DESIGN BY	CHECKED BY	
EMR	JPJ	

**GENERAL
 PLANS**

SCALE: 1"=20'

28757

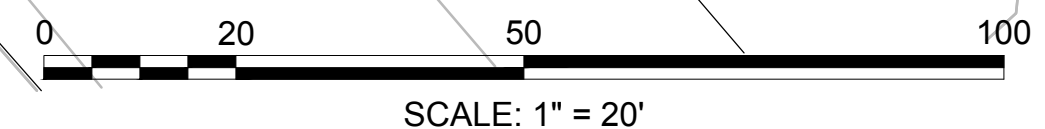
24 OF 38



28757 (HD) GP CONST REV.DWG 9/28/2018

CONTINUED ON SHEET 23

CONTINUED ON SHEET 25



PREPARED FOR
 CITY OF PORTSMOUTH
 1 JUNKINS AVENUE
 PORTSMOUTH, NH

**ON-STREET BICYCLE FACILITY
 IMPROVEMENT PROJECT
 LAFAYETTE ROAD/MIDDLE STREET
 PORTSMOUTH, NH**

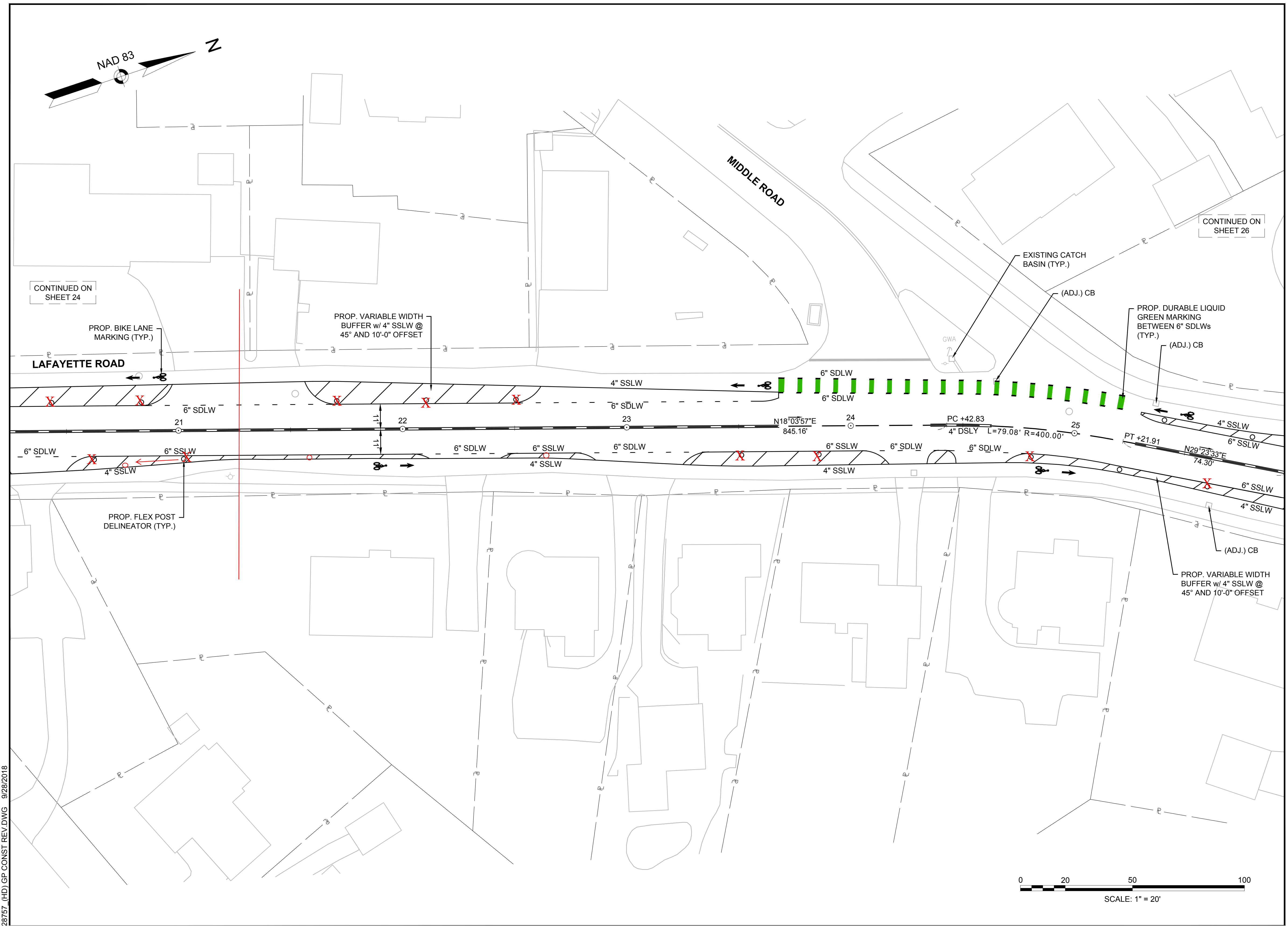
REVISIONS		
NO.	REVISION	DATE
5	PROJECT RE-BID	3/28/18
4	PROJECT RE-BID	2/7/18
3	NHDOT COMMENTS	11/7/17
2	FINAL DESIGN	7/28/17
1	PRELIMINARY DESIGN	10/14/16
07/28/2017		
DRAWN/DESIGN BY	CHECKED BY	
EMR	JPJ	

**GENERAL
 PLANS**

SCALE: 1"=20'

28757

25 OF 38



28757 (HD) GP CONST REV.DWG 9/28/2018

PREPARED FOR
 CITY OF PORTSMOUTH
 1 JUNKINS AVENUE
 PORTSMOUTH, NH

**ON-STREET BICYCLE FACILITY
 IMPROVEMENT PROJECT
 LAFAYETTE ROAD/MIDDLE STREET
 PORTSMOUTH, NH**

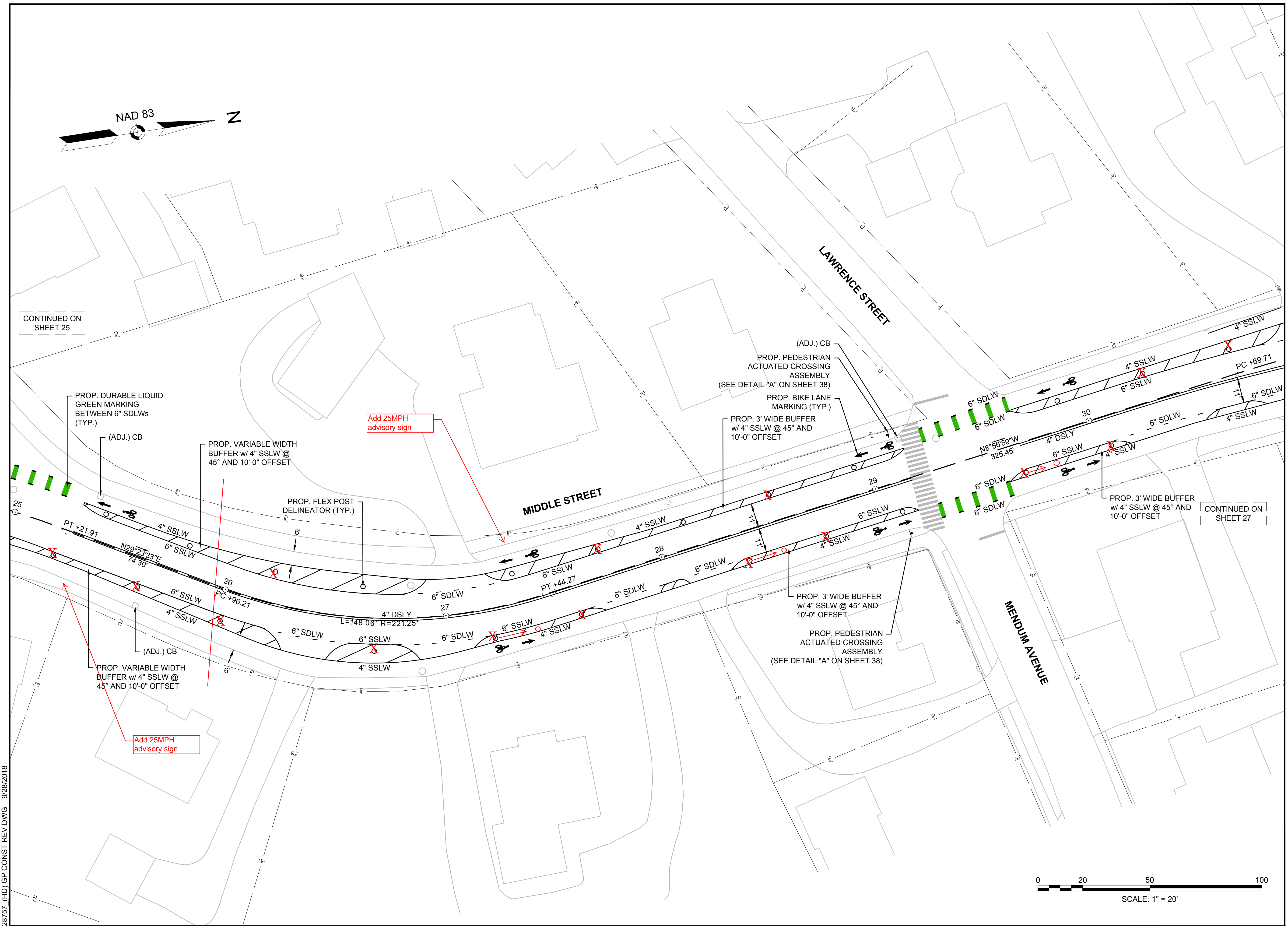
REVISIONS		
NO.	REVISION	DATE
6	FIELD ADJUSTMENTS	10/12/18
5	PROJECT RE-BID	3/28/18
4	PROJECT RE-BID	2/7/18
3	NHDOT COMMENTS	11/7/17
2	FINAL DESIGN	7/28/17
1	PRELIMINARY DESIGN	10/14/16
NO. REVISION DATE		
07/28/2017		
DRAWN/DESIGN BY	CHECKED BY	
EMR	JPJ	

**GENERAL
 PLANS**

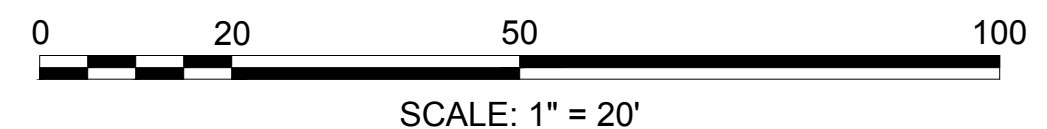
SCALE: 1"=20'

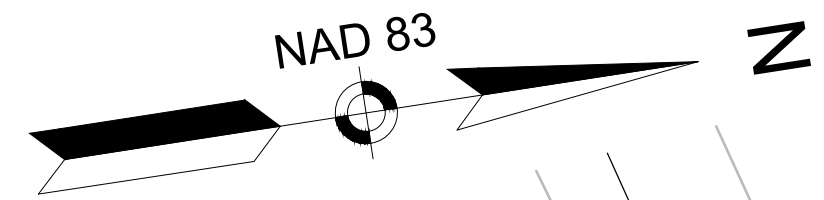
28757

26 OF 38



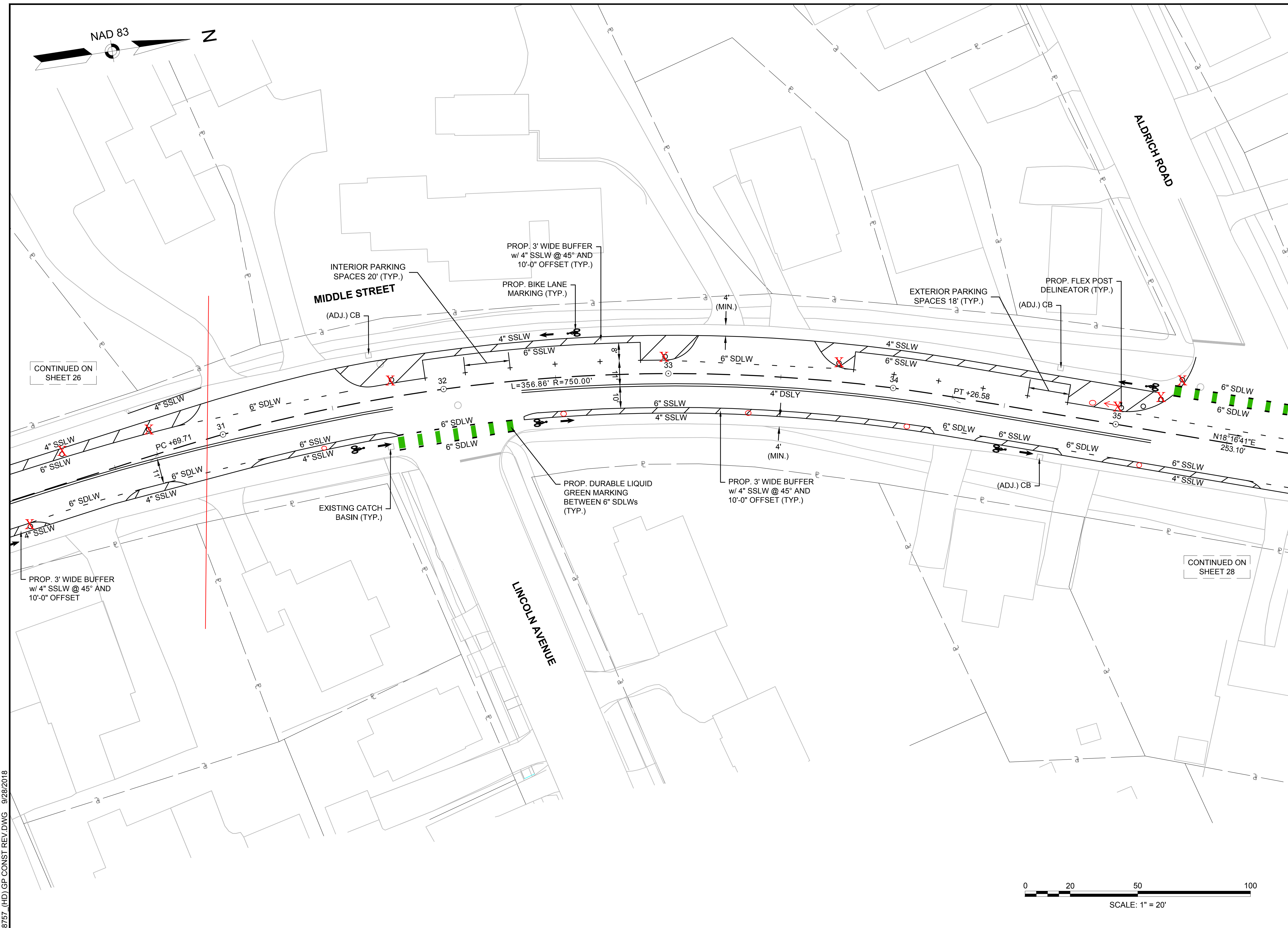
28757 (HD) GP CONST REV.DWG 9/28/2018





PREPARED FOR
 CITY OF PORTSMOUTH
 1 JUNKINS AVENUE
 PORTSMOUTH, NH

**ON-STREET BICYCLE FACILITY
 IMPROVEMENT PROJECT
 LAFAYETTE ROAD/MIDDLE STREET
 PORTSMOUTH, NH**

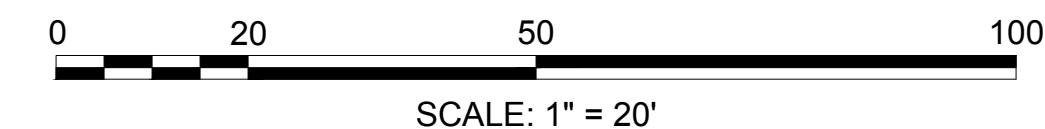


CONTINUED ON SHEET 26

CONTINUED ON SHEET 28

28757 (HD) GP CONST REV.DWG 9/28/2018

REVISIONS		
NO.	REVISION	DATE
6	FIELD ADJUSTMENTS	9/28/18
5	PROJECT RE-BID	3/28/18
4	PROJECT RE-BID	2/7/18
3	NHDOT COMMENTS	11/7/17
2	FINAL DESIGN	7/28/17
1	PRELIMINARY DESIGN	10/14/16
07/28/2017		
DRAWN/DESIGN BY		CHECKED BY
EMR		JPJ



GENERAL PLANS

SCALE: 1"=20'

28757

27 OF 38

PREPARED FOR
 CITY OF PORTSMOUTH
 1 JUNKINS AVENUE
 PORTSMOUTH, NH

**ON-STREET BICYCLE FACILITY
 IMPROVEMENT PROJECT
 LAFAYETTE ROAD/MIDDLE STREET
 PORTSMOUTH, NH**

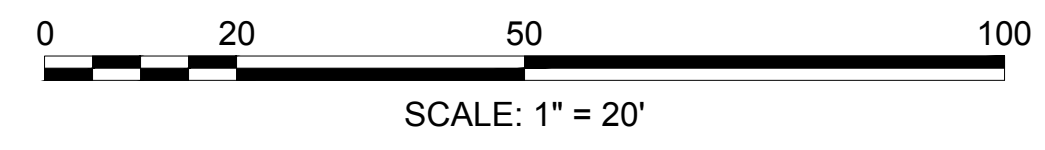
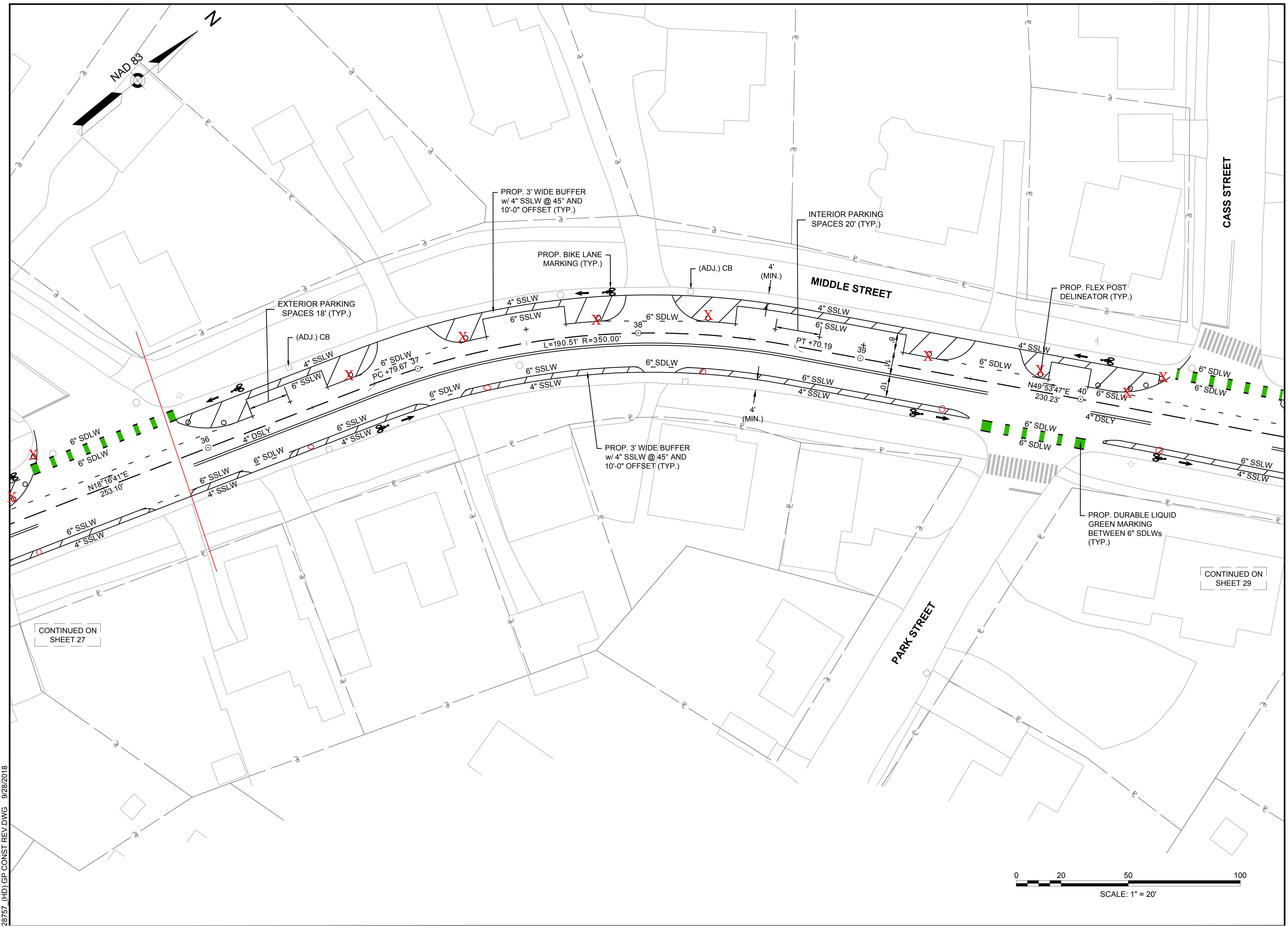
REVISIONS		
NO.	REVISION	DATE
6	FIELD ADJUSTMENTS	9/28/18
5	PROJECT RE-BID	3/28/18
4	PROJECT RE-BID	2/7/18
3	NHDOT COMMENTS	11/7/17
2	FINAL DESIGN	7/28/17
1	PRELIMINARY DESIGN	10/14/16
07/28/2017		
DRAWN/DESIGN BY	CHECKED BY	
EMR	JPJ	

**GENERAL
 PLANS**

SCALE: 1" = 20'

28757

28 OF 38



28757 (HD) GP CONST REV.DWG 9/28/2018

PREPARED FOR
 CITY OF PORTSMOUTH
 1 JUNKINS AVENUE
 PORTSMOUTH, NH

**ON-STREET BICYCLE FACILITY
 IMPROVEMENT PROJECT
 LAFAYETTE ROAD/MIDDLE STREET
 PORTSMOUTH, NH**

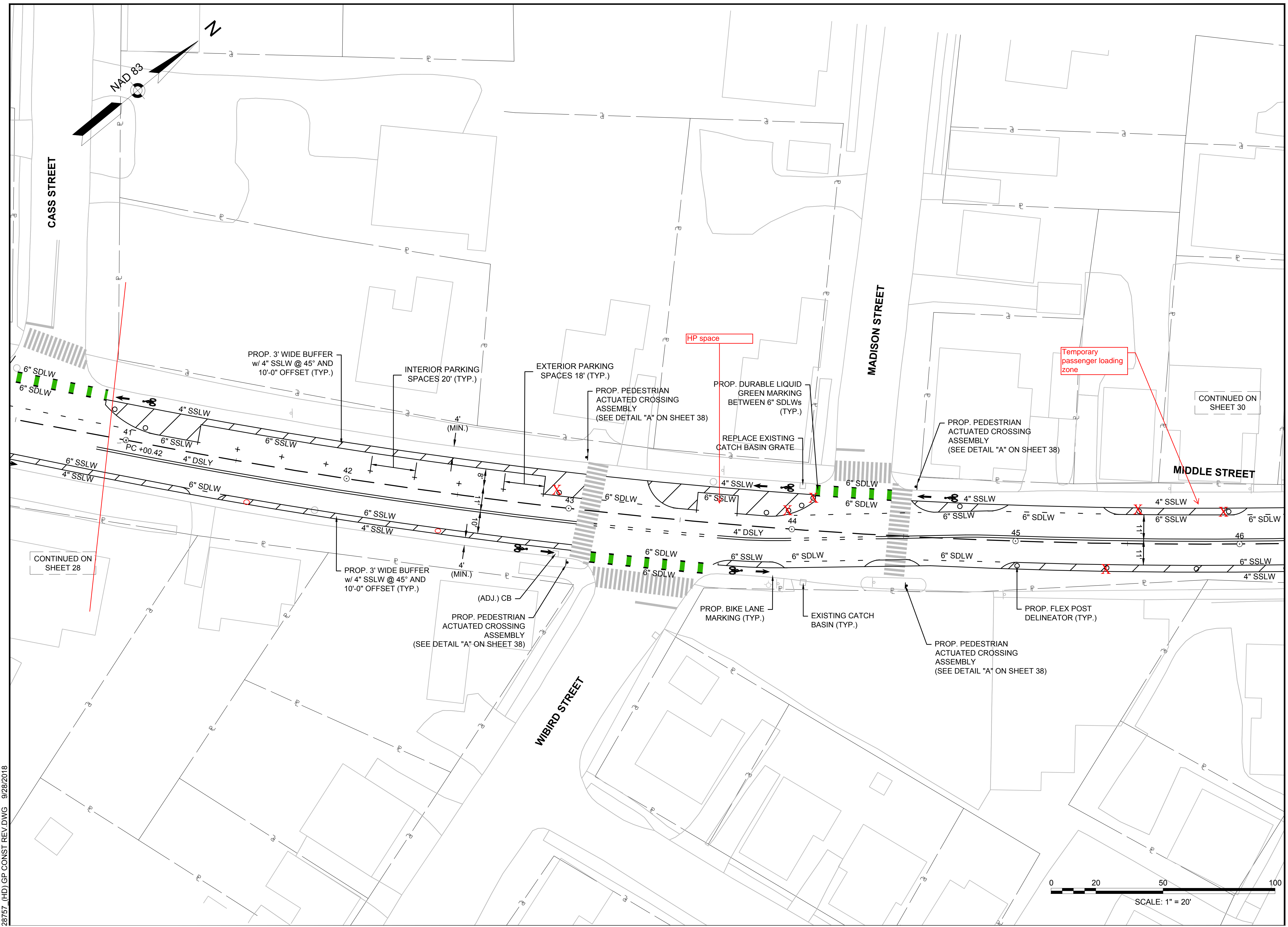
REVISIONS		
NO.	REVISION	DATE
6	FIELD ADJUSTMENTS	9/28/18
5	PROJECT RE-BID	3/28/18
4	PROJECT RE-BID	2/7/18
3	NHDOT COMMENTS	11/7/17
2	FINAL DESIGN	7/28/17
1	PRELIMINARY DESIGN	10/14/16
07/28/2017		
DRAWN/DESIGN BY		CHECKED BY
EMR		JPJ

**GENERAL
 PLANS**

SCALE: 1"=20'

28757

29 OF 38



28757 (HD) GP CONST REV.DWG 9/28/2018

PREPARED FOR
 CITY OF PORTSMOUTH
 1 JUNKINS AVENUE
 PORTSMOUTH, NH

**ON-STREET BICYCLE FACILITY
 IMPROVEMENT PROJECT
 LAFAYETTE ROAD/MIDDLE STREET
 PORTSMOUTH, NH**

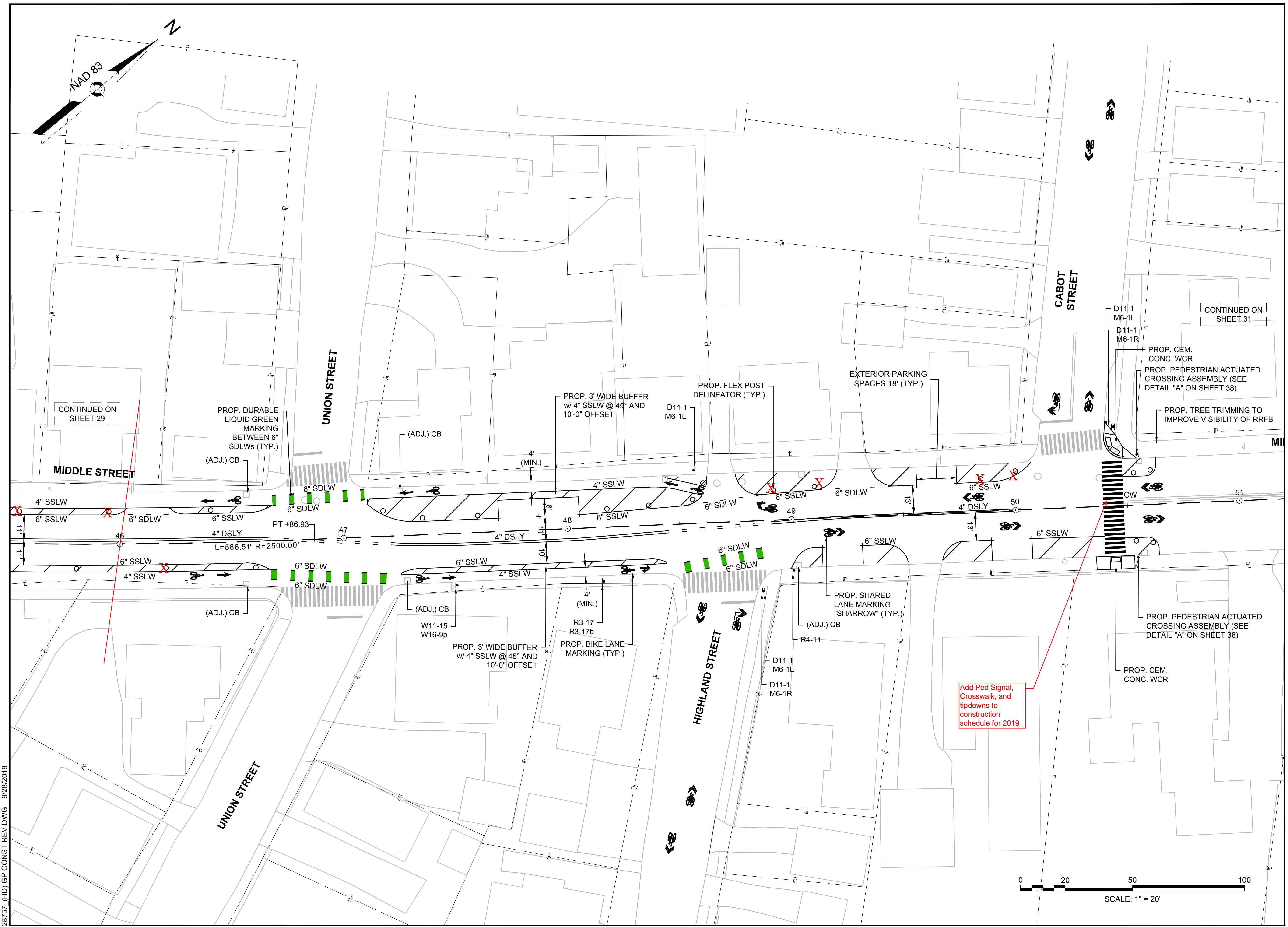
REVISIONS		
NO.	REVISION	DATE
6	FIELD ADJUSTMENTS	9/28/18
5	PROJECT RE-BID	3/28/18
4	PROJECT RE-BID	2/7/18
3	NHDOT COMMENTS	11/7/17
2	FINAL DESIGN	7/28/17
1	PRELIMINARY DESIGN	10/14/16
07/28/2017		
DRAWN/DESIGN BY		CHECKED BY
EMR		JPJ

**GENERAL
 PLANS**

SCALE: 1"=20'

28757

30 OF 38



28757 (HD) GP CONST REV.DWG 9/28/2018

PREPARED FOR
 CITY OF PORTSMOUTH
 1 JUNKINS AVENUE
 PORTSMOUTH, NH

**ON-STREET BICYCLE FACILITY
 IMPROVEMENT PROJECT
 LAFAYETTE ROAD/MIDDLE STREET
 PORTSMOUTH, NH**

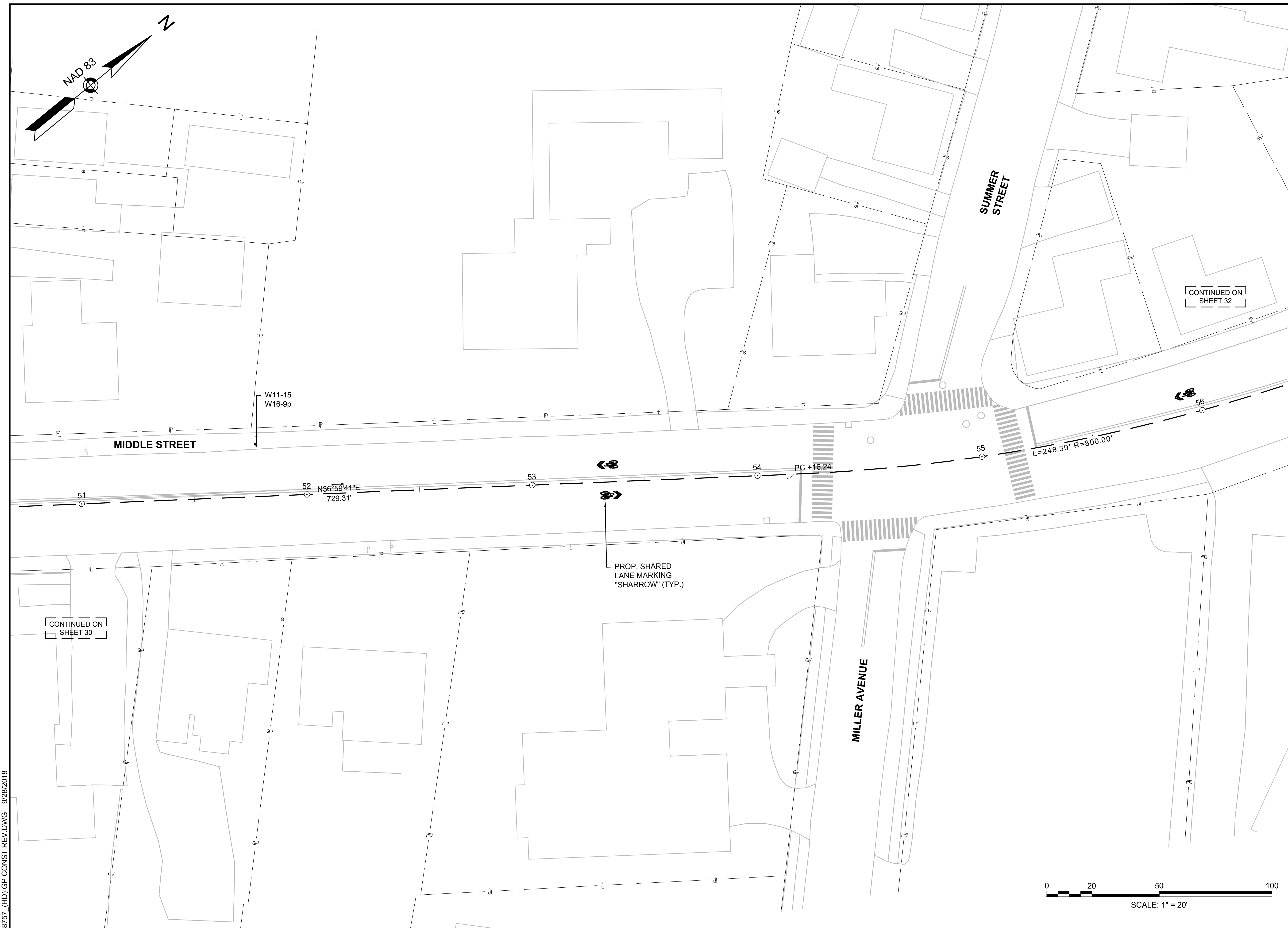
REVISIONS		
NO.	REVISION	DATE
5	PROJECT RE-BID	3/28/18
4	PROJECT RE-BID	2/7/18
3	NHDOT COMMENTS	11/7/17
2	FINAL DESIGN	7/28/17
1	PRELIMINARY DESIGN	10/14/16
07/28/2017		
DRAWN/DESIGN BY	CHECKED BY	
EMR	JPJ	

**GENERAL
 PLANS**

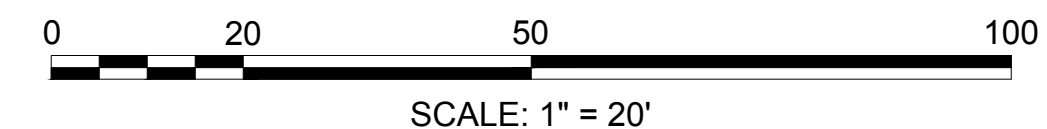
SCALE: 1" = 20'

28757

31 OF 38



28757 (HD) GP CONST REV.DWG 9/28/2018



PREPARED FOR
 CITY OF PORTSMOUTH
 1 JUNKINS AVENUE
 PORTSMOUTH, NH

**ON-STREET BICYCLE FACILITY
 IMPROVEMENT PROJECT
 LAFAYETTE ROAD/MIDDLE STREET
 PORTSMOUTH, NH**

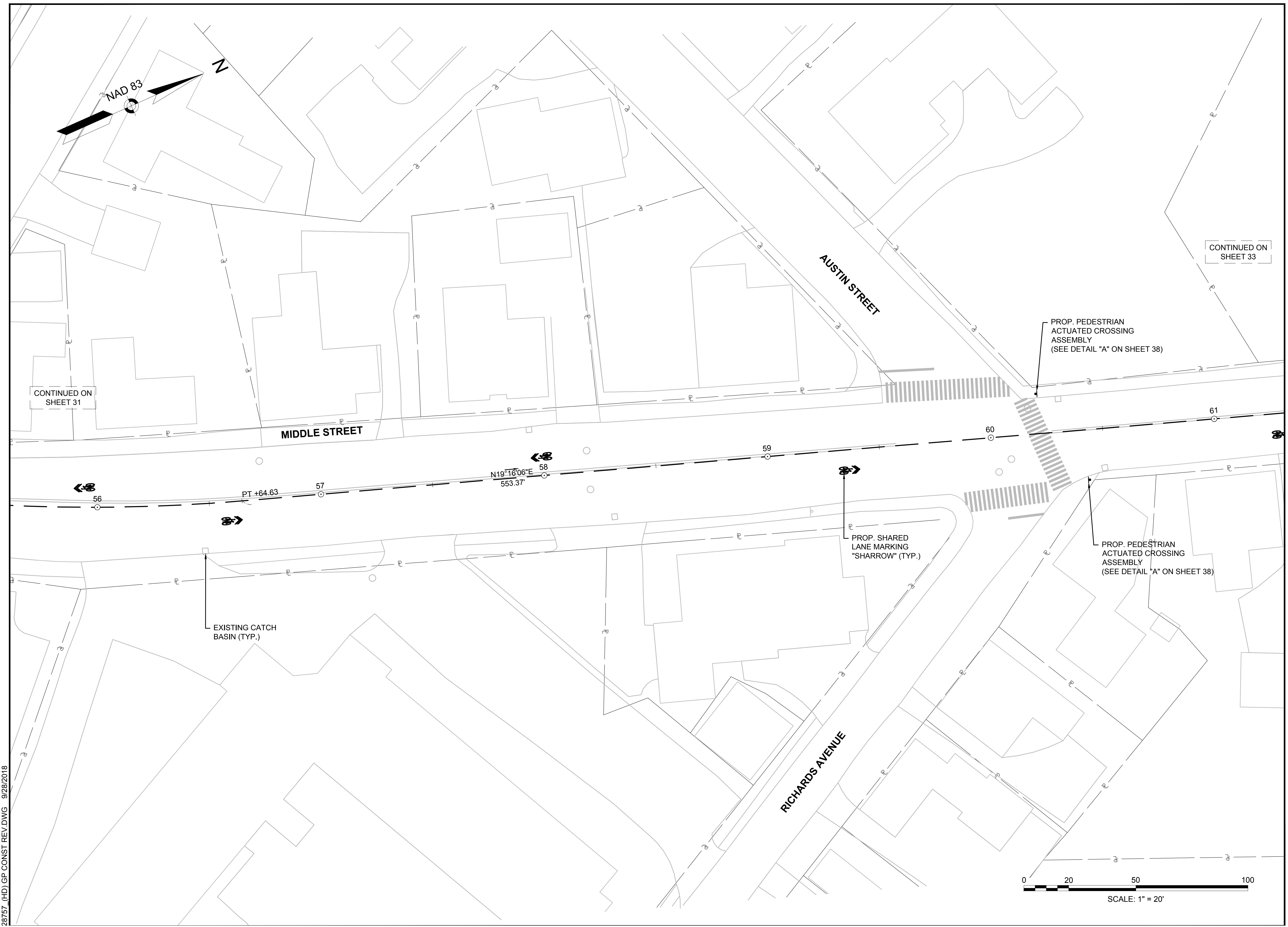
REVISIONS		
NO.	REVISION	DATE
5	PROJECT RE-BID	3/28/18
4	PROJECT RE-BID	2/7/18
3	NHDOT COMMENTS	11/7/17
2	FINAL DESIGN	7/28/17
1	PRELIMINARY DESIGN	10/14/16
07/28/2017		
DRAWN/DESIGN BY	CHECKED BY	
EMR	JPJ	

**GENERAL
 PLANS**

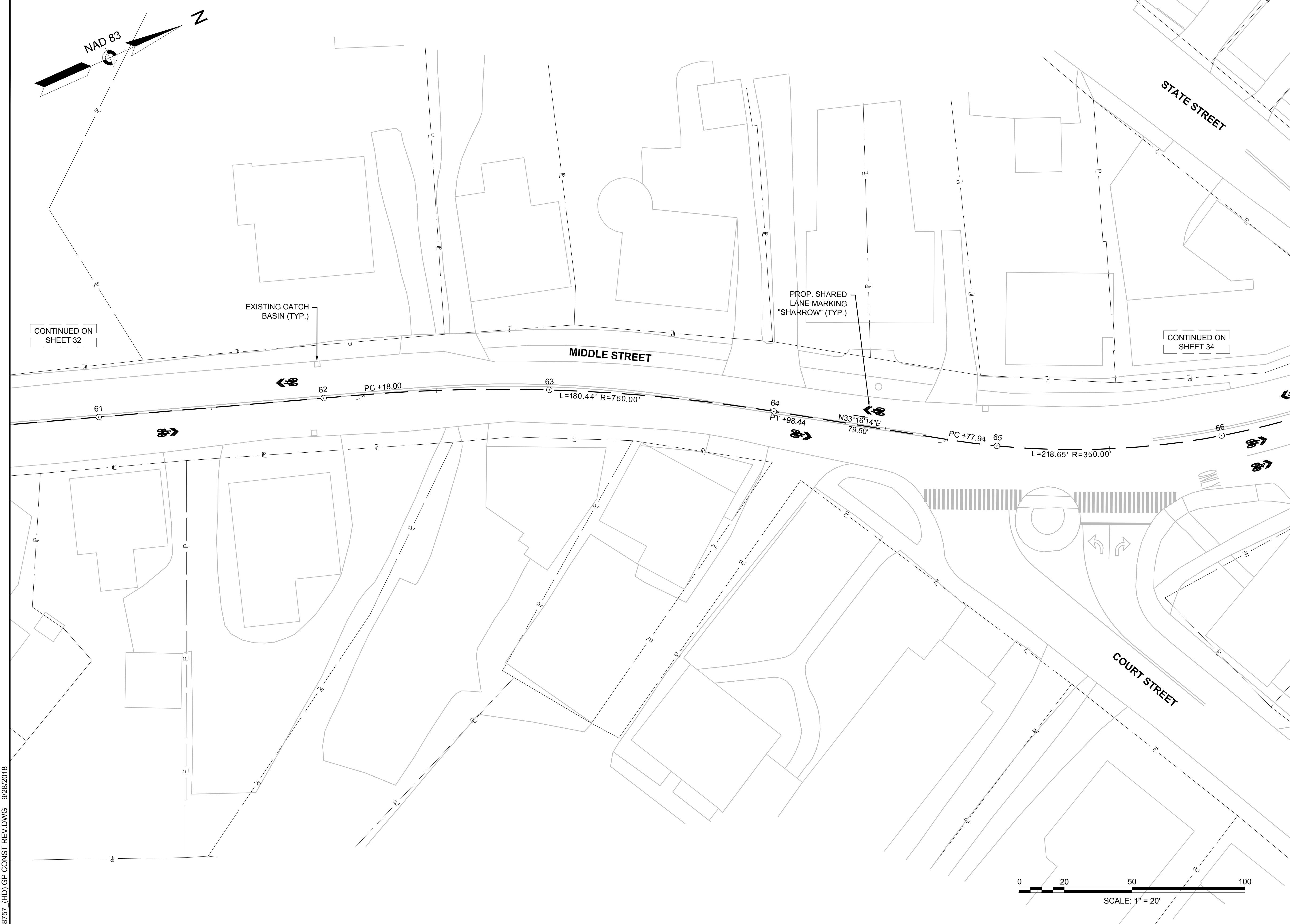
SCALE: 1" = 20'

28757

32 OF 38



28757 (HD) GP CONST REV.DWG 9/28/2018



CONTINUED ON SHEET 32

EXISTING CATCH BASIN (TYP.)

PROP. SHARED LANE MARKING "SHARROW" (TYP.)

CONTINUED ON SHEET 34

GPI Greenman-Pedersen, Inc.
 Engineering & Construction Services
 21 Daniel Street, Second Floor, Portsmouth, NH 03801
 Tel: (603) 891-2213 Fax: (978) 658-3044
 http://www.gpinet.com

PREPARED FOR
 CITY OF PORTSMOUTH
 1 JUNKINS AVENUE
 PORTSMOUTH, NH

**ON-STREET BICYCLE FACILITY
 IMPROVEMENT PROJECT
 LAFAYETTE ROAD/MIDDLE STREET
 PORTSMOUTH, NH**

REVISIONS		
NO.	REVISION	DATE
5	PROJECT RE-BID	3/28/18
4	PROJECT RE-BID	2/7/18
3	NHDOT COMMENTS	11/7/17
2	FINAL DESIGN	7/28/17
1	PRELIMINARY DESIGN	10/14/16
07/28/2017		
DRAWN/DESIGN BY	CHECKED BY	
EMR	JPJ	

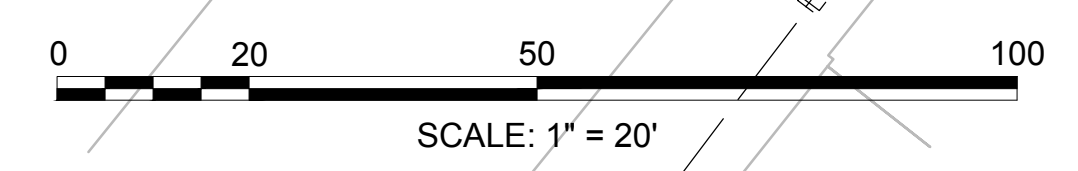
GENERAL PLANS

SCALE: 1"=20'

28757

33 OF 38

28757 (HD) GP CONST REV.DWG 9/28/2018



PREPARED FOR
 CITY OF PORTSMOUTH
 1 JUNKINS AVENUE
 PORTSMOUTH, NH

**ON-STREET BICYCLE FACILITY
 IMPROVEMENT PROJECT
 LAFAYETTE ROAD/MIDDLE STREET
 PORTSMOUTH, NH**

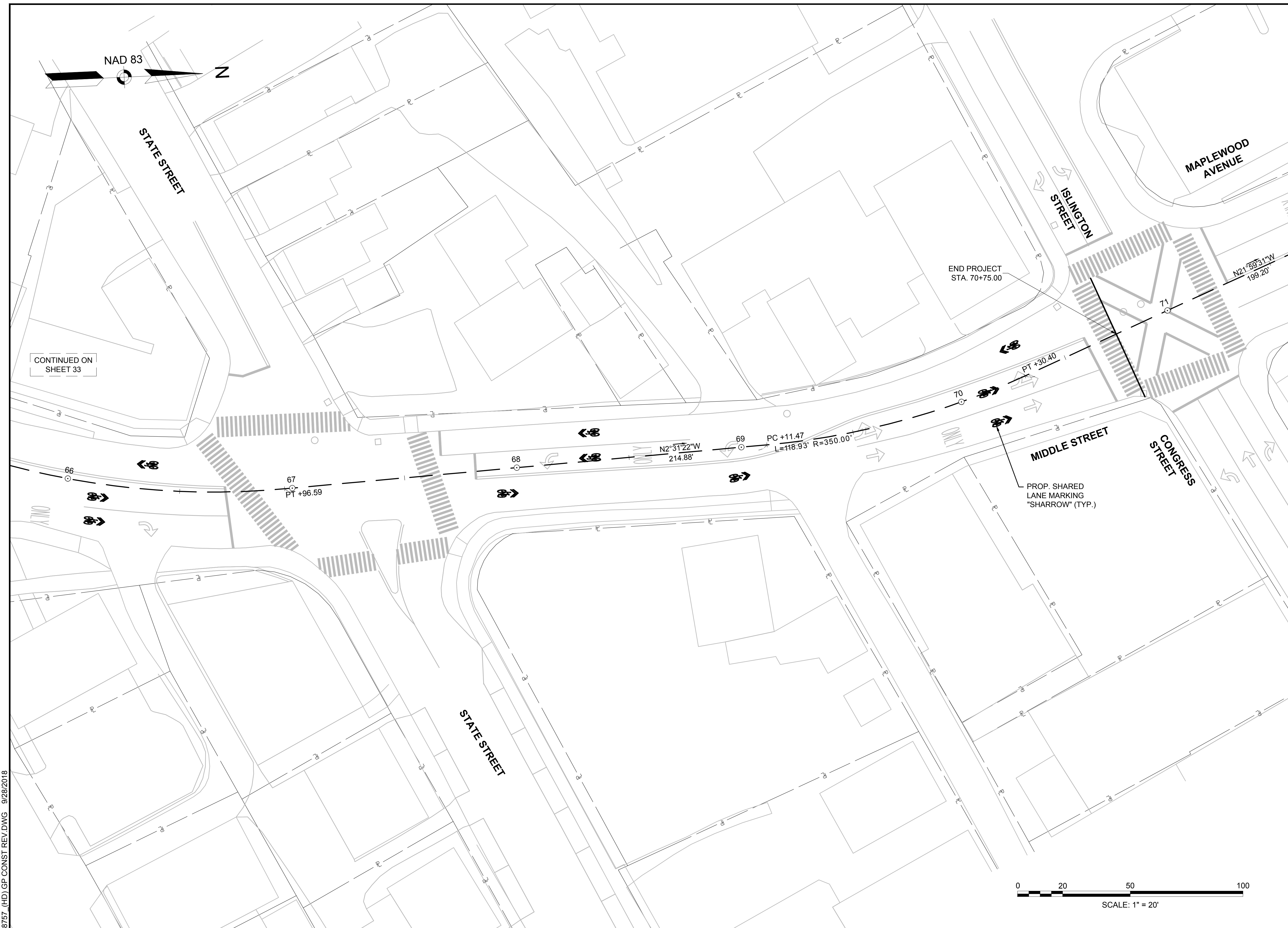
REVISIONS		
NO.	REVISION	DATE
5	PROJECT RE-BID	3/28/18
4	PROJECT RE-BID	2/7/18
3	NHDOT COMMENTS	11/7/17
2	FINAL DESIGN	7/28/17
1	PRELIMINARY DESIGN	10/14/16
07/28/2017		
DRAWN/DESIGN BY		CHECKED BY
EMR		JPJ

GENERAL PLANS

SCALE: 1"=20'

28757

34 OF 38



28757 (HD) GP CONST REV.DWG 9/28/2018