

Middle St / Lafayette Rd Bicycle Route

Parking Traffic & Safety

October 4, 2018

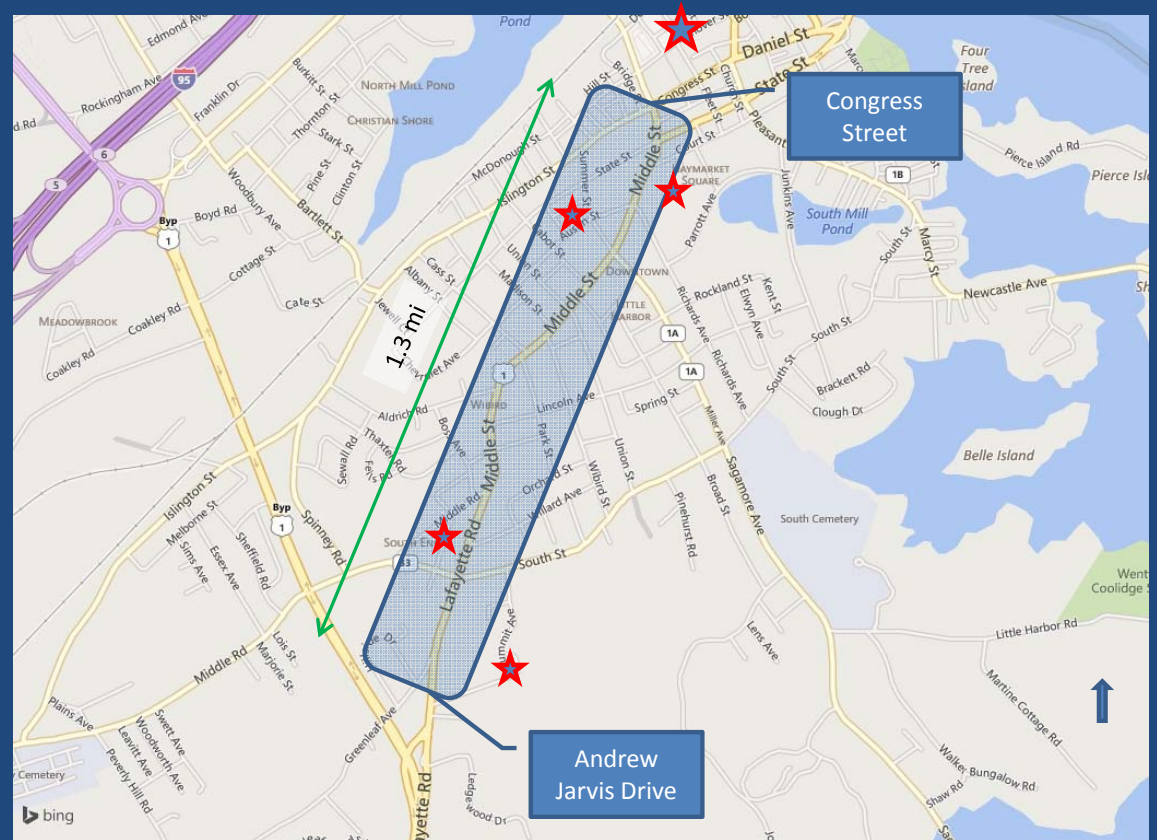
Project Purpose and Objectives

Purpose

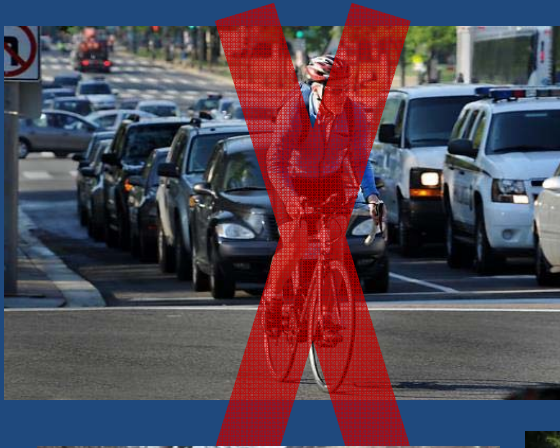
- Improve Safety for Cyclists & Pedestrians
- Expand Connectivity
- Provide Bicycle Route Utilized by All Ages

Objectives

- Slow traffic speeds
- Improve pedestrian crossings
- Maintain on-street parking
- Emergency response route
- Separate bike lanes from traffic

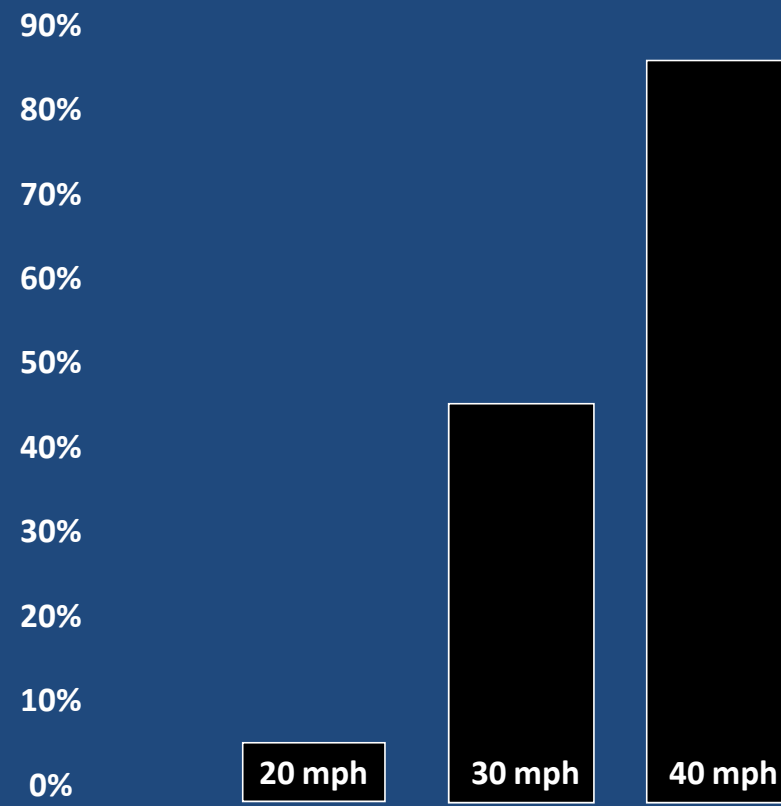


Who are we designing for?

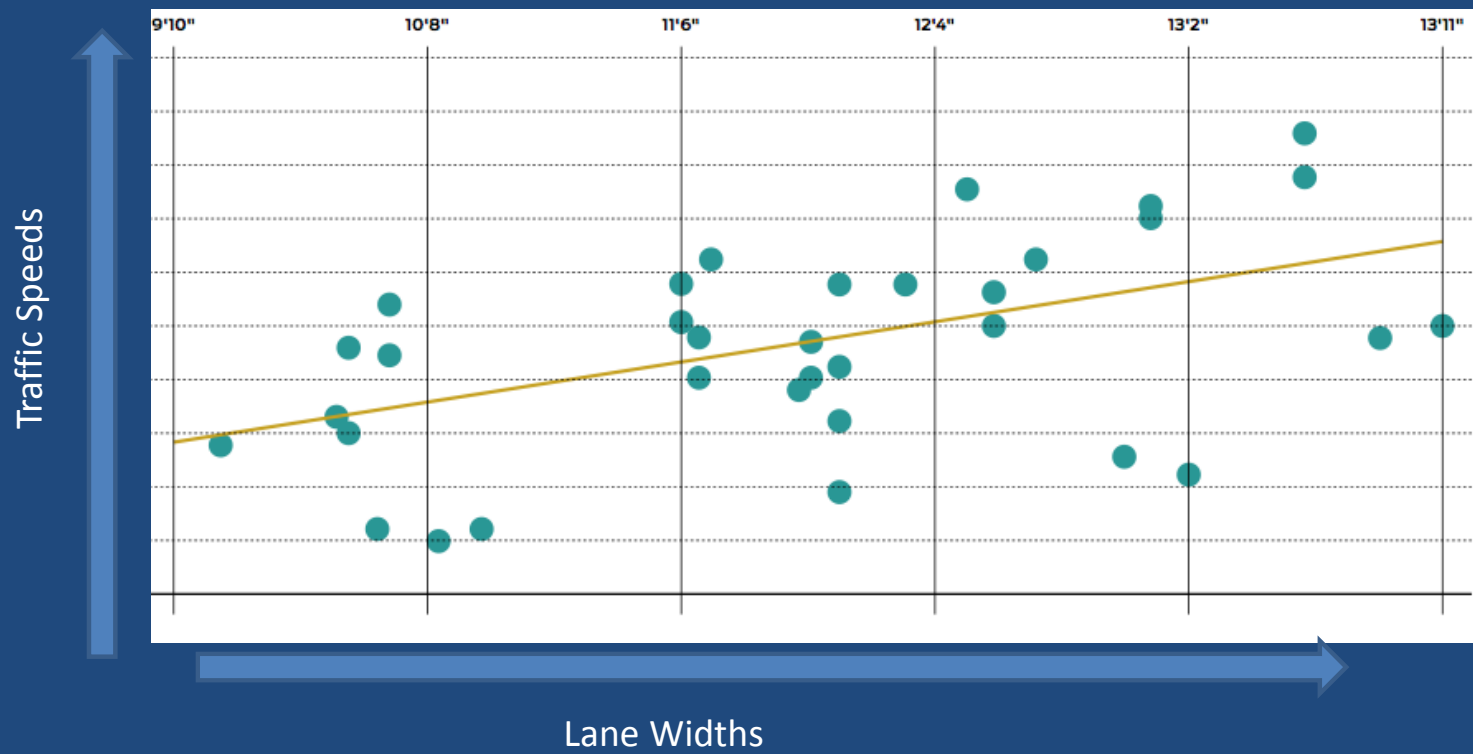


Safe Speeds

Pedestrian's risk of fatality if hit by a motorist



Traffic Calming

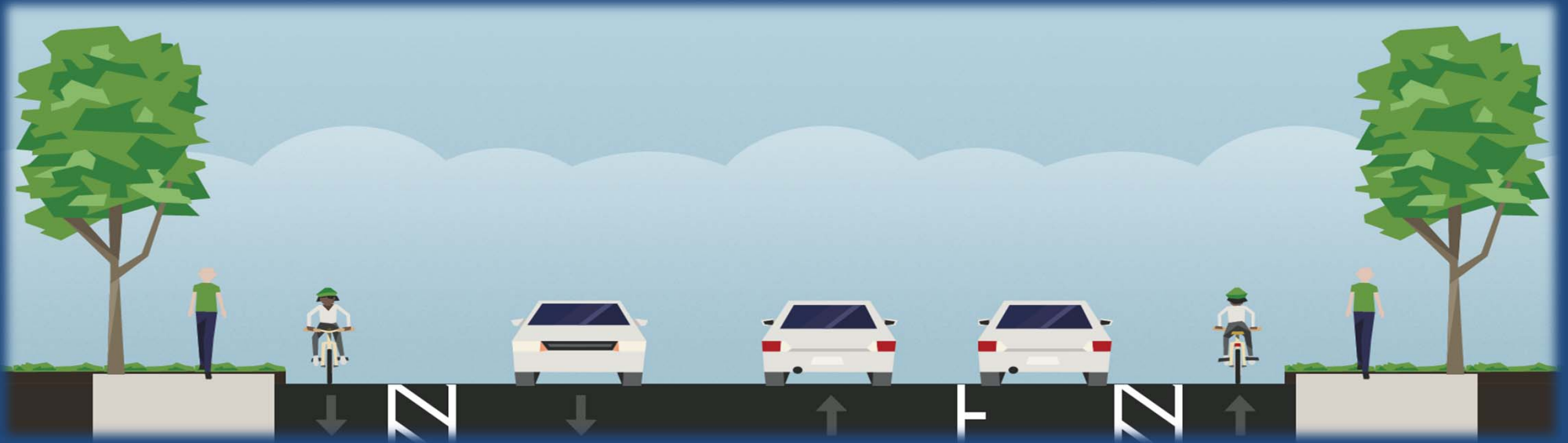


Pre-Construction

- Two lanes of travel, variable roadway width
- Sidewalks along most of the corridor
- 85th percentile speeds 31 - 35
- Low on-street parking usage south of Cass St



Post-Construction



Post-Construction

- Buffered -- a bicycle lane with additional lateral separation from motor vehicle travel ways
- Protected – a bicycle lane with vertical separation (parked cars, flexible bollards, plantings, or curbing) from motor vehicle travel ways



Post-Construction

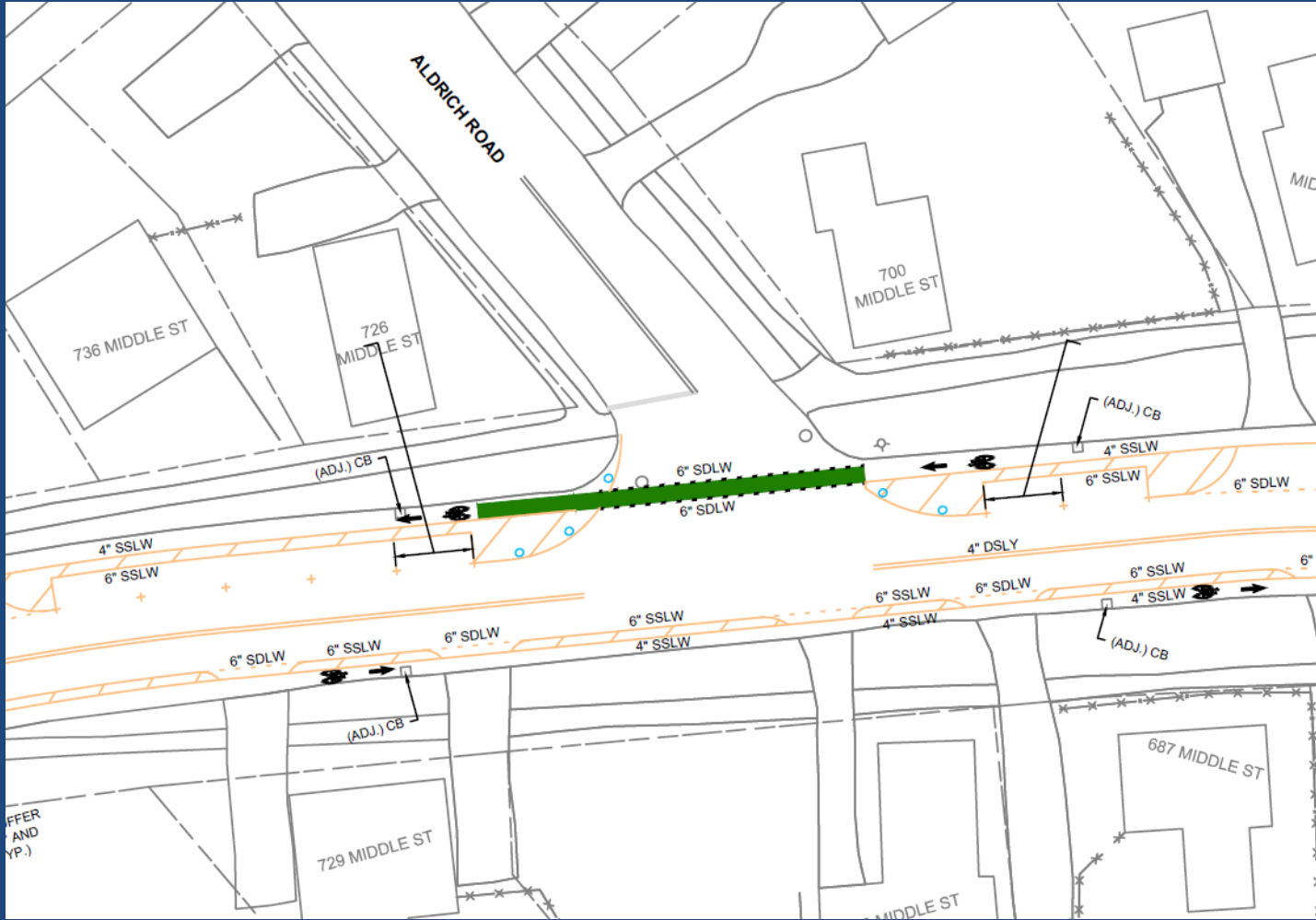
- Pedestrian-activated signals at Richards / Austin crosswalk
- Ped. Signal at Lawrence / Mendum (in process)
- Green paint to delineate bike lanes through intersections (in process)
- Bike Boxes at South St intersection (in process)

Post-Construction



Post-Construction Monitoring / Analysis

- Traffic speeds
- Observing traffic behavior at intersections and side streets
- Pedestrian and bicycle counts
- Parking enforcement – warnings for parking in bike lanes
- Parking counts (including side streets)
- Report back at a future date if any recommended modifications



Post-Construction Education / Outreach

- Project website -- planportsmouth/middle-street-lafayette-road-bicycle-pedestrian-corridor-project
- Press releases / social media
- Direct outreach to schools
- Bicycle ambassadors during month of October
- Organized rides
- Coordination between all city departments