

# NORTH MILL POND GREENWAY PORTSMOUTH, NH

COMMUNITY MEETING  
DECEMBER 19th, 2018



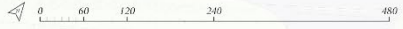
**Tighe&Bond**  
Engineers | Environmental Specialists

**HALVORSON DESIGN**  
PARTNERSHIP

**DEROSA** Environmental Consulting, Inc.



# EXISTING CONDITIONS NORTH MILL POND GREENWAY



## LEGEND

- Highest Observable Tide Line
  - 25' Wetland Buffer
  - 100' Wetland Buffer
  - Parcels
  - Vehicular Route
  - Bike / Pedestrian Corridor
  - View Corridors
  - View Corridor and Informal Crossing
  - Scenic Views
- Existing Conditions*









# EXISTING SITE PHOTOGRAPHS NORTH MILL POND GREENWAY

0 60 120 240 480

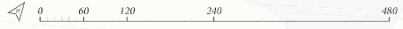








# PLANNED AND ONGOING PROJECTS NORTH MILL POND GREENWAY



## PLANNED AND ONGOING PROJECTS

Proposed Projects Limits

Proposed New Bike Lane

Proposed Project Notes / Descriptions



FUTURE PLANS ASPIRE TO DAYLIGHTING HODGSON BROOK

MAPLEWOOD AVE COMPLETE STREET DESIGN IMPROVEMENTS

DEER STREET DEVELOPMENT

FUTURE MARKET STREET GATEWAY IMPROVEMENTS

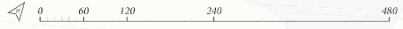
PROPOSED MARKET STREET ROUNDABOUT

HARBORCORP DEVELOPMENT

46-64 MAPLEWOOD DEVELOPMENT



# PROPOSED IMPROVEMENTS NORTH MILL POND GREENWAY



## GREENWAY ALIGNMENT

- Invasive Species to be Removed
- Preferred Alignment
- Raised Boardwalk
- Alternate Alignment
- Connector Path
- Connection via Existing Sidewalk
- Rail Junction



PROPOSED SIGNALIZED / ACTIVATED CROSSWALK

PROPOSED LIVING SHORELINE

PROPOSED GREENWAY ACCESS

PROPOSED PUBLIC AMENITY SPACE WITH HISTORIC / INTERPRETIVE ELEMENTS

PROPOSED INVASIVE SPECIES TO BE REMOVED AND REPLACED WITH UPLAND PLANTING AREAS

GREENWAY ALIGNMENT TO BE 25' MINIMUM DISTANCE FROM HIGHEST OBSERVABLE TIDE LINE

PROPOSED ALTERNATE ALIGNMENT

GREENWAY ALIGNMENT TO BE 20' MINIMUM DISTANCE FROM CENTER OF RAIL LINE

PROPOSED RAILWAY CROSSING OR OVERPASS

PROPOSED GREENWAY ACCESS

TRAIL JUNCTION

PROPOSED CROSSWALK

PROPOSED RAISED BOARDWALK MULTI-USE PATH

EXISTING SIDEWALK

EXISTING SIDEWALK

PROPOSED CONNECTOR PATH

TRAIL JUNCTION

PROPOSED CROSSWALK

PROPOSED COMMUNITY SPACE

PROPOSED INVASIVE SPECIES TO BE REMOVED AND REPLACED WITH UPLAND PLANTING AREAS

PROPOSED LIVING SHORELINE

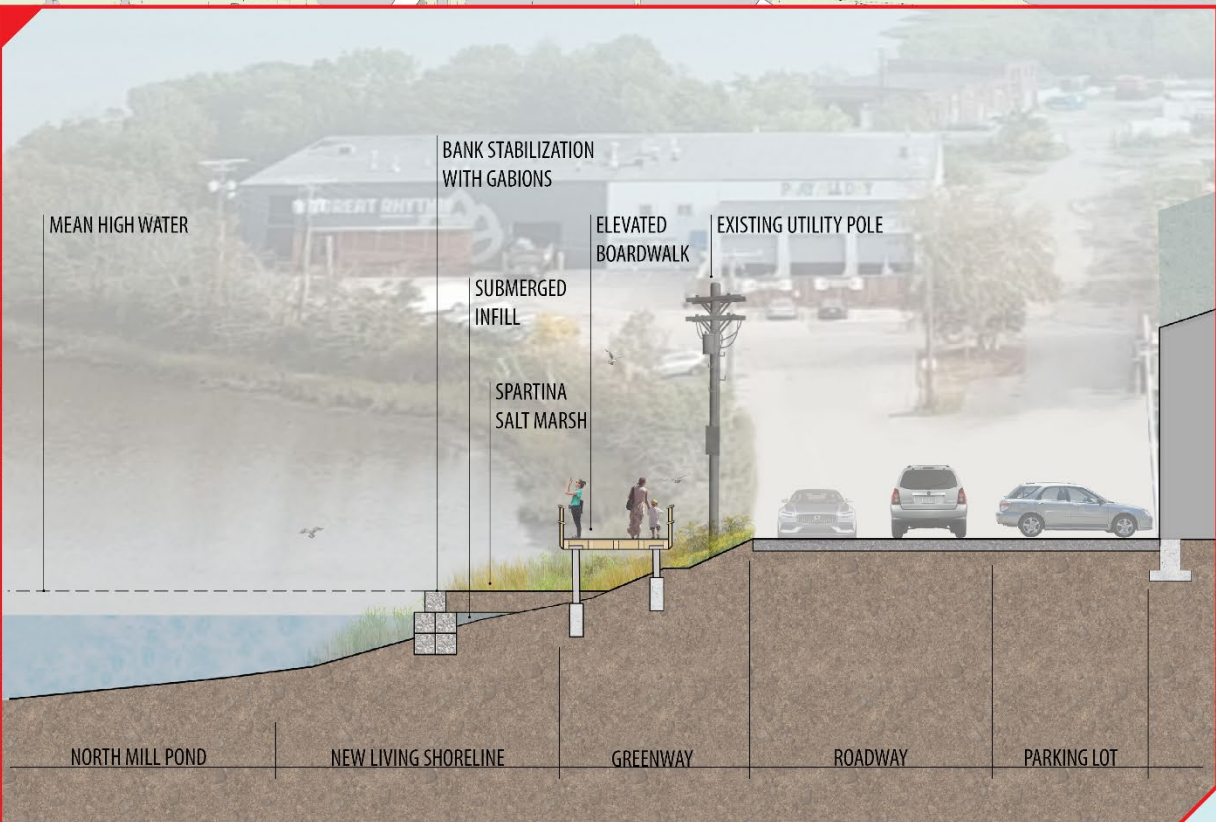
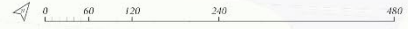
TRAIL JUNCTION

PROPOSED GREENWAY ACCESS



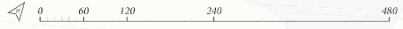
# BOARDWALK: SECTION AND PRECEDENT IMAGES

## NORTH MILL POND GREENWAY












# PROPOSED IMPROVEMENTS NORTH MILL POND GREENWAY



## GREENWAY ALIGNMENT

-  Invasive Species to be Removed
-  Preferred Alignment
-  Raised Boardwalk
-  Alternate Alignment
-  Connector Path
-  Connection via Existing Sidewalk
-  Rail Junction



PROPOSED SIGNALIZED / ACTIVATED CROSSWALK

PROPOSED LIVING SHORELINE

PROPOSED GREENWAY ACCESS

PROPOSED PUBLIC AMENITY SPACE  
WITH HISTORIC / INTERPRETIVE ELEMENTS

PROPOSED INVASIVE SPECIES TO BE REMOVED AND  
REPLACED WITH UPLAND PLANTING AREAS

GREENWAY ALIGNMENT TO BE 25' MINIMUM  
DISTANCE FROM HIGHEST OBSERVABLE TIDE LINE

PROPOSED ALTERNATE ALIGNMENT

GREENWAY ALIGNMENT TO BE 20' MINIMUM  
DISTANCE FROM CENTER OF RAIL LINE

PROPOSED RAILWAY  
CROSSING OR OVERPASS

PROPOSED GREENWAY  
ACCESS

TRAIL JUNCTION

PROPOSED CROSSWALK

PROPOSED RAISED  
BOARDWALK MULTI-USE PATH

EXISTING  
SIDEWALK

EXISTING  
SIDEWALK

PROPOSED  
CONNECTOR PATH

TRAIL JUNCTION

PROPOSED  
CROSSWALK

PROPOSED  
COMMUNITY SPACE

PROPOSED INVASIVE SPECIES TO BE REMOVED AND  
REPLACED WITH UPLAND PLANTING AREAS

PROPOSED LIVING SHORELINE

TRAIL JUNCTION

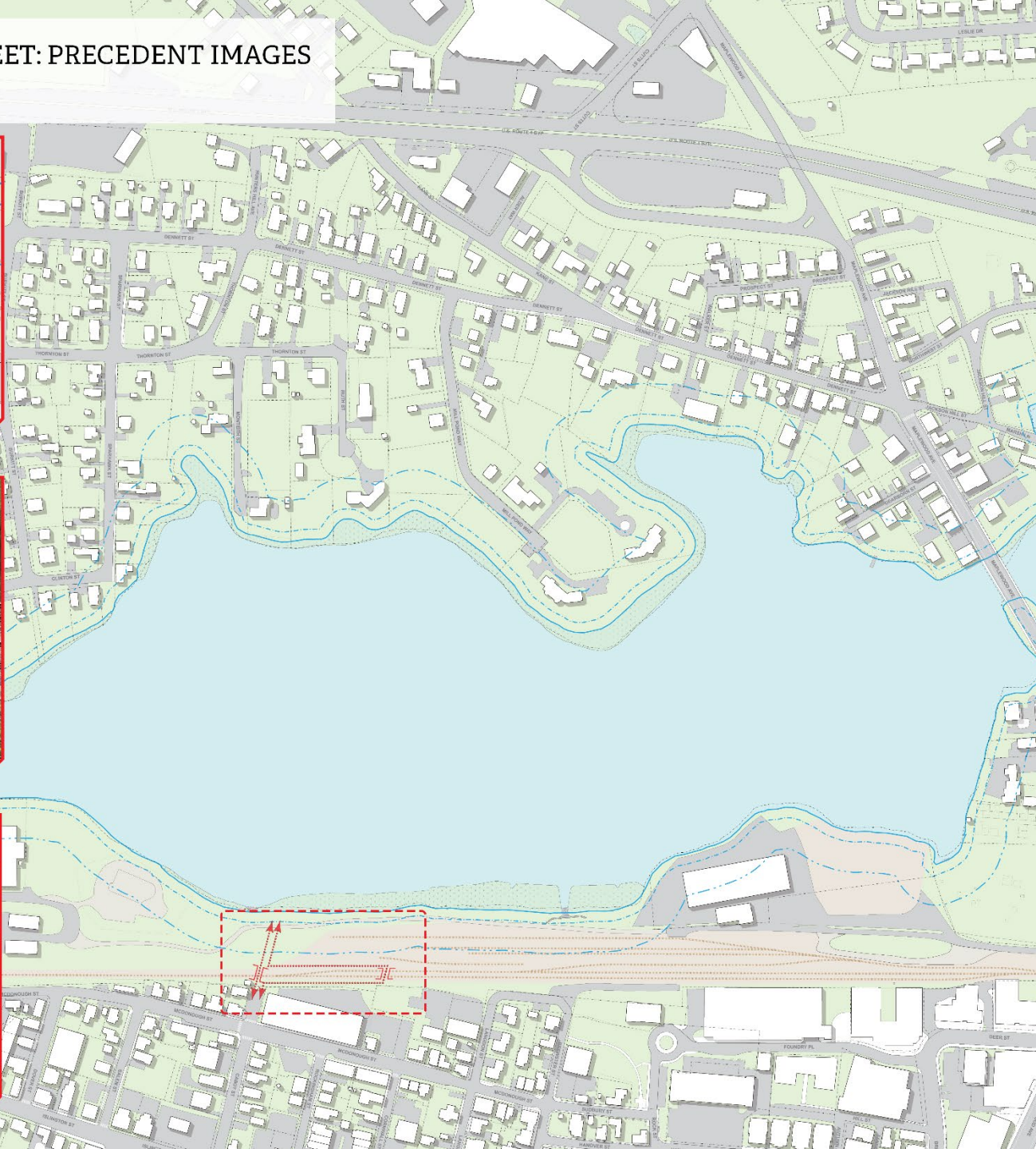
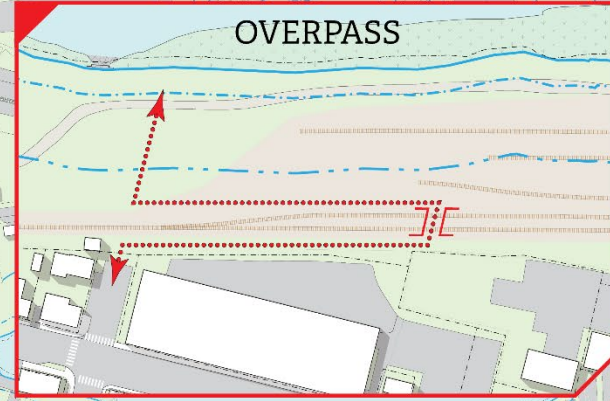
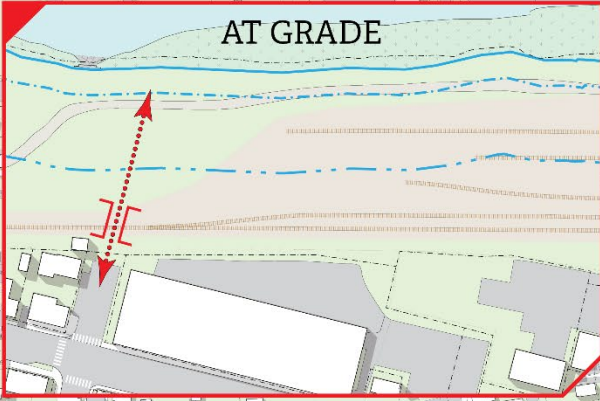
PROPOSED GREENWAY  
ACCESS



# RAILWAY CROSSING AT CABOT STREET: PRECEDENT IMAGES

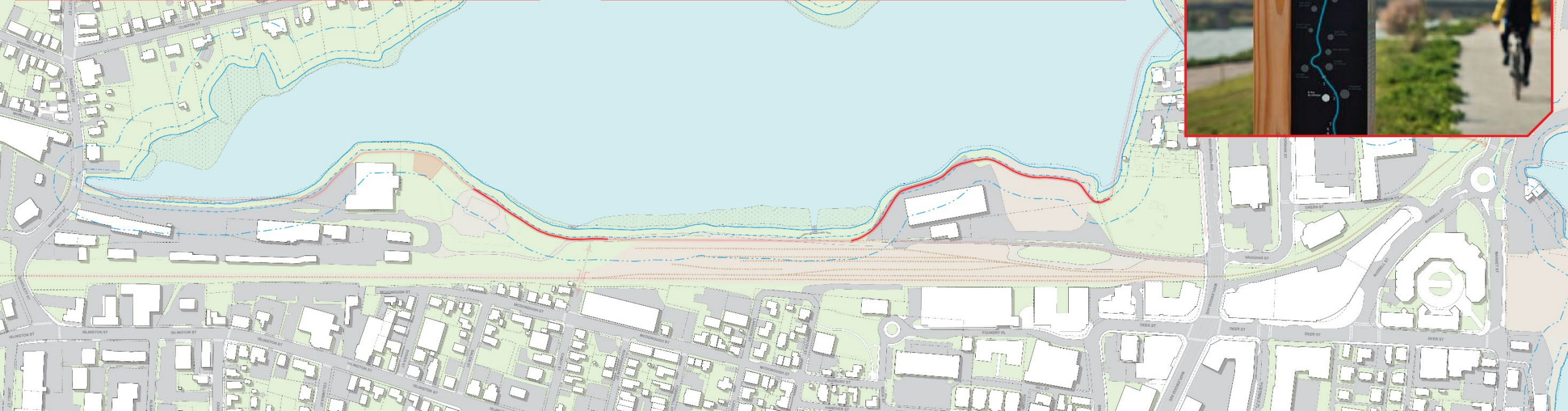
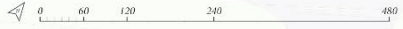
## NORTH MILL POND GREENWAY

0 60 120 240 480





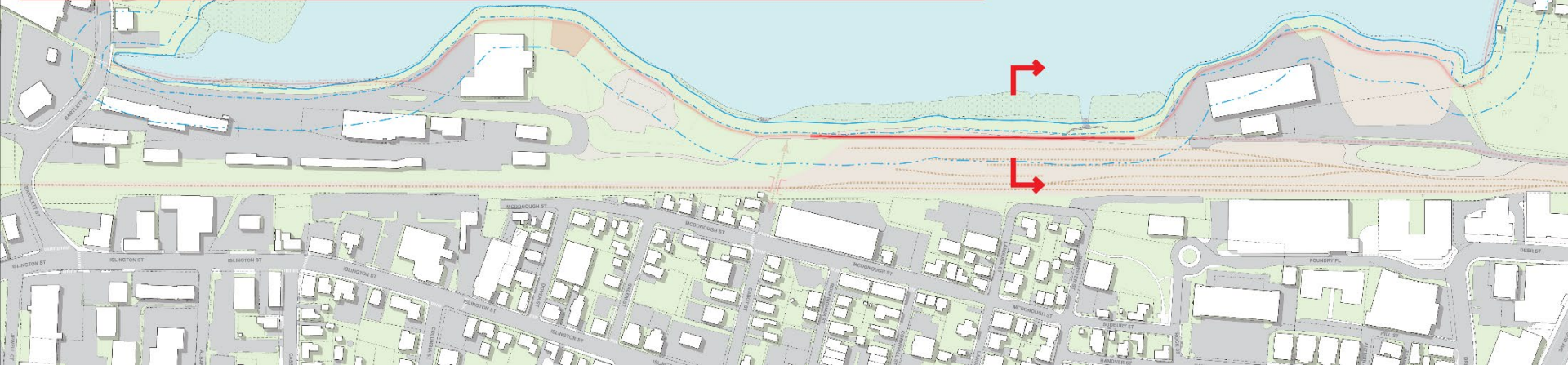
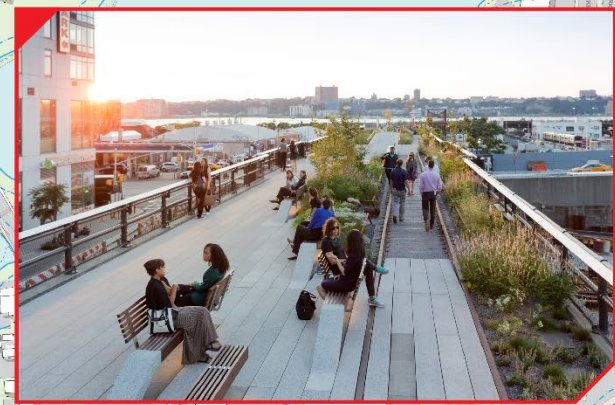
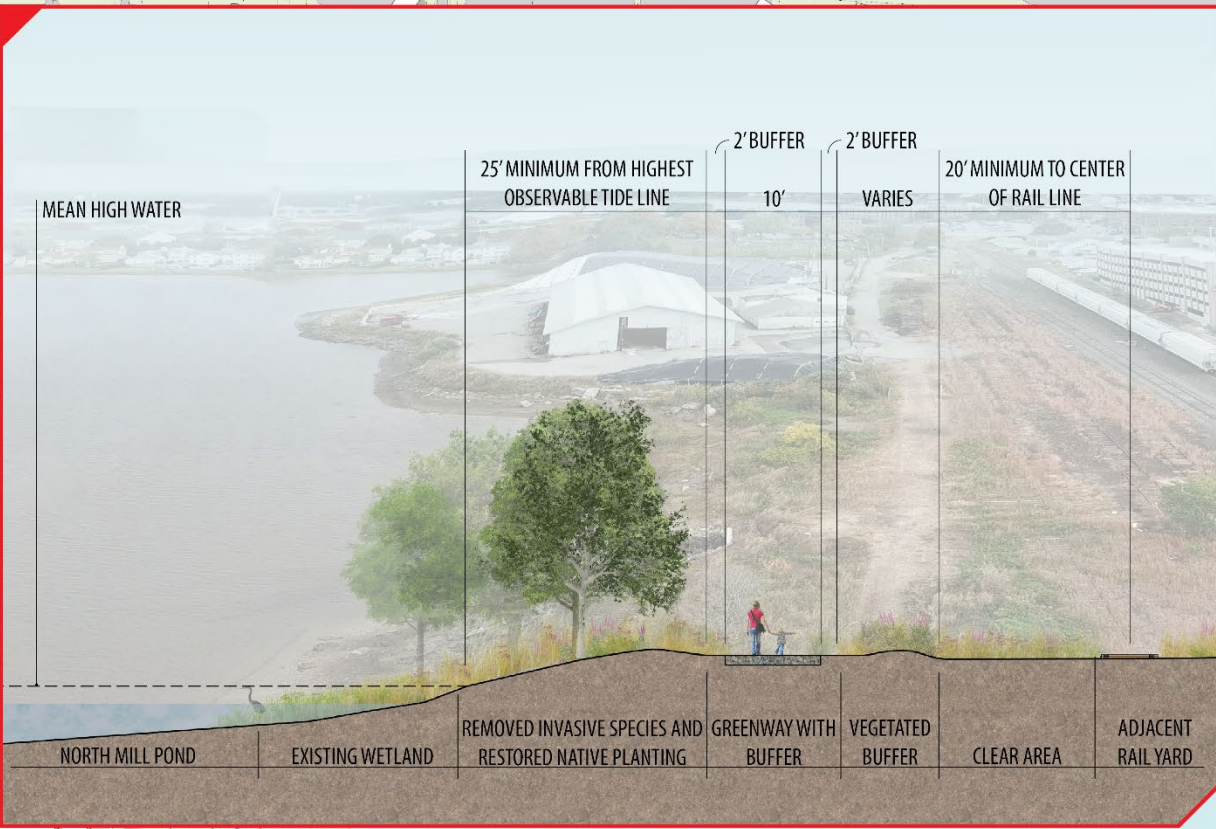
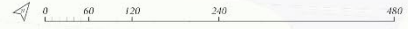
# SHORELINE TRAIL: PRECEDENT IMAGES NORTH MILL POND GREENWAY





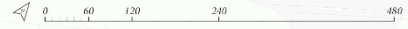
# TRAIL ADJACENT TO RAIL YARD: SECTION AND PRECEDENT IMAGES

## NORTH MILL POND GREENWAY





# PROPOSED IMPROVEMENTS NORTH MILL POND GREENWAY



## GREENWAY ALIGNMENT

- Invasive Species to be Removed
- Preferred Alignment
- Raised Boardwalk
- Alternate Alignment
- Connector Path
- Connection via Existing Sidewalk
- Rail Junction



PROPOSED SIGNALIZED / ACTIVATED CROSSWALK

PROPOSED LIVING SHORELINE

PROPOSED GREENWAY ACCESS

PROPOSED PUBLIC AMENITY SPACE  
WITH HISTORIC / INTERPRETIVE ELEMENTS

PROPOSED INVASIVE SPECIES TO BE REMOVED AND  
REPLACED WITH UPLAND PLANTING AREAS

GREENWAY ALIGNMENT TO BE 25' MINIMUM  
DISTANCE FROM HIGHEST OBSERVABLE TIDE LINE

PROPOSED RAISED  
BOARDWALK MULTI-USE PATH

PROPOSED ALTERNATE ALIGNMENT

PROPOSED CONNECTOR PATH

GREENWAY ALIGNMENT TO BE 20' MINIMUM  
DISTANCE FROM CENTER OF RAIL LINE

PROPOSED RAILWAY  
CROSSING OR OVERPASS

PROPOSED GREENWAY  
ACCESS

TRAIL JUNCTION

PROPOSED CROSSWALK

EXISTING  
SIDEWALK

EXISTING  
SIDEWALK

PROPOSED  
COMMUNITY SPACE

PROPOSED INVASIVE SPECIES TO BE REMOVED AND  
REPLACED WITH UPLAND PLANTING AREAS

PROPOSED LIVING SHORELINE

TRAIL JUNCTION

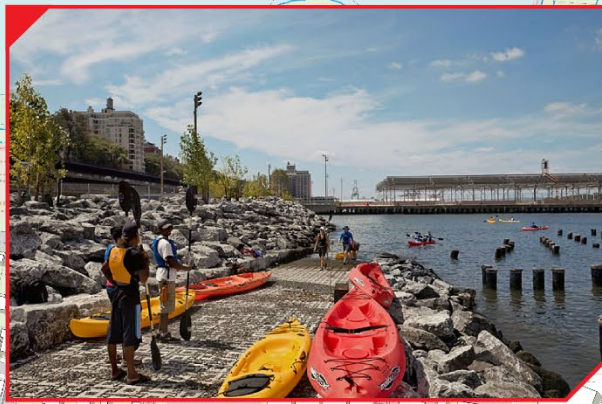
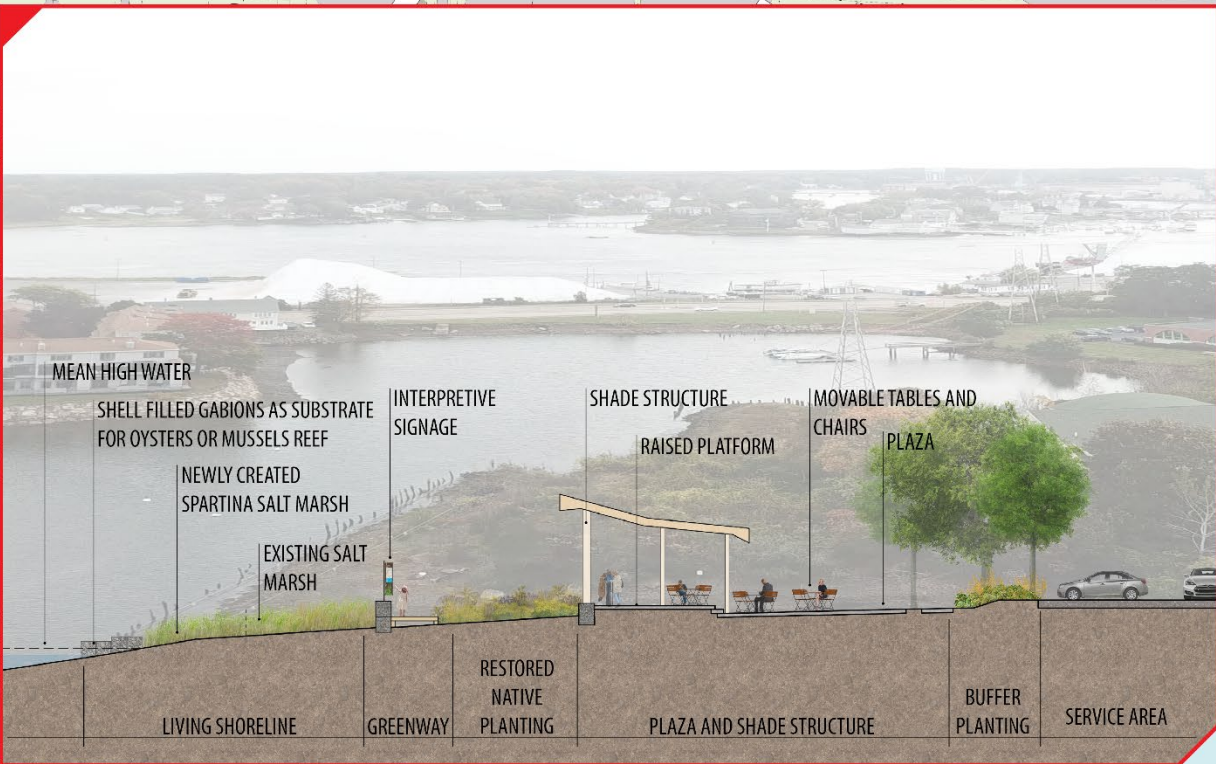
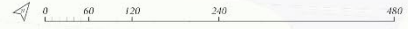
PROPOSED GREENWAY  
ACCESS

PROPOSED CROSSWALK



# COMMUNITY PARK: SECTION AND PRECEDENT IMAGES

## NORTH MILL POND GREENWAY





EXISTING DEGRADED SHORELINE  
NORTH MILL POND GREENWAY







GABIONS WITH OYSTER SHELL AND ROCK



COIR LOGS & STRUCTURAL GEOTEXTILES



COIR LOGS AND HIGH AND LOW MARSH PLANTINGS AFTER TWO YEARS OF ESTABLISHMENT



MARSH GRASS PLANTINGS INSTALLED WITH COIR BLANKET



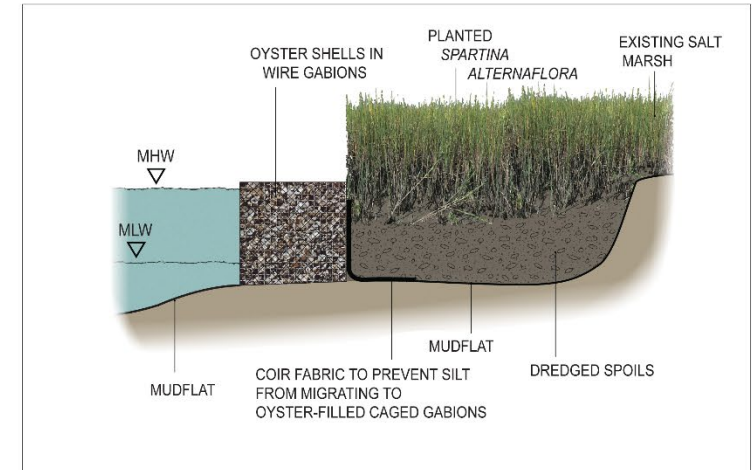
SALVAGED GRANITE BLOCK CELLS



SALVAGED GRANITE PLANTING BEDS ESTABLISHED WITH PLANTING MEDIUM INSTALLED



ESTABLISHMENT OF SEA WEEDS IN TIDE POOL CELL



OYSTER REEF CONCEPT SKETCH





INVASIVE PLANT INVENTORY - NORTH MILL POND



AUTUMN OLIVE



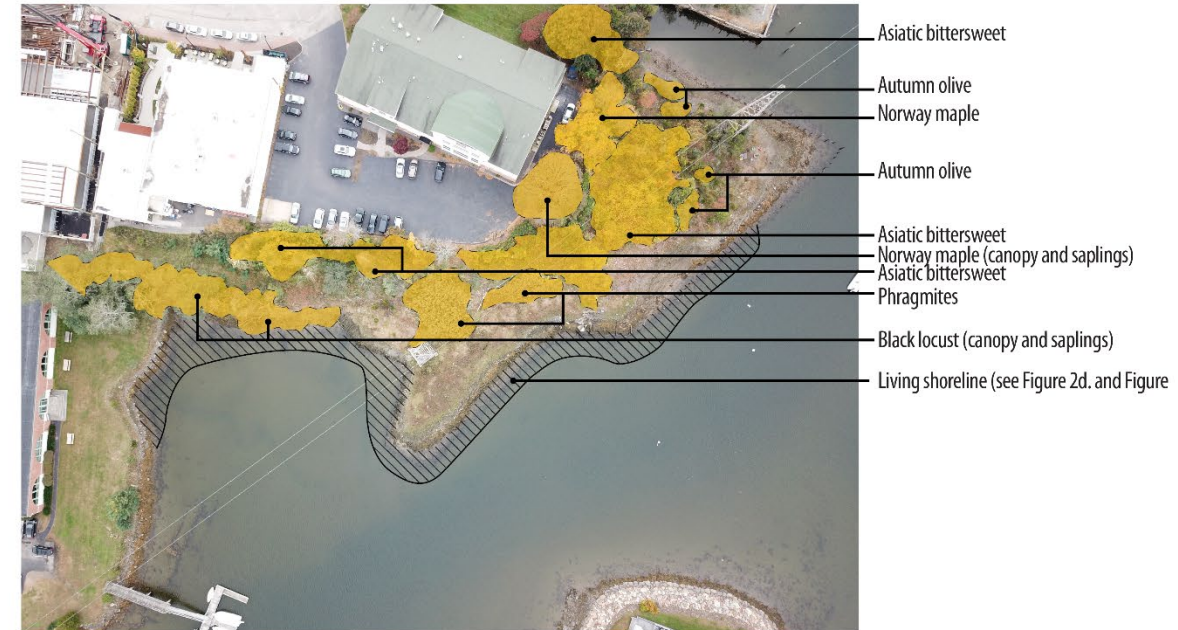
COMMON REED - PHRAGMITES



GLOSSY BUCKTHORN



ASIATIC BITTERSWEET

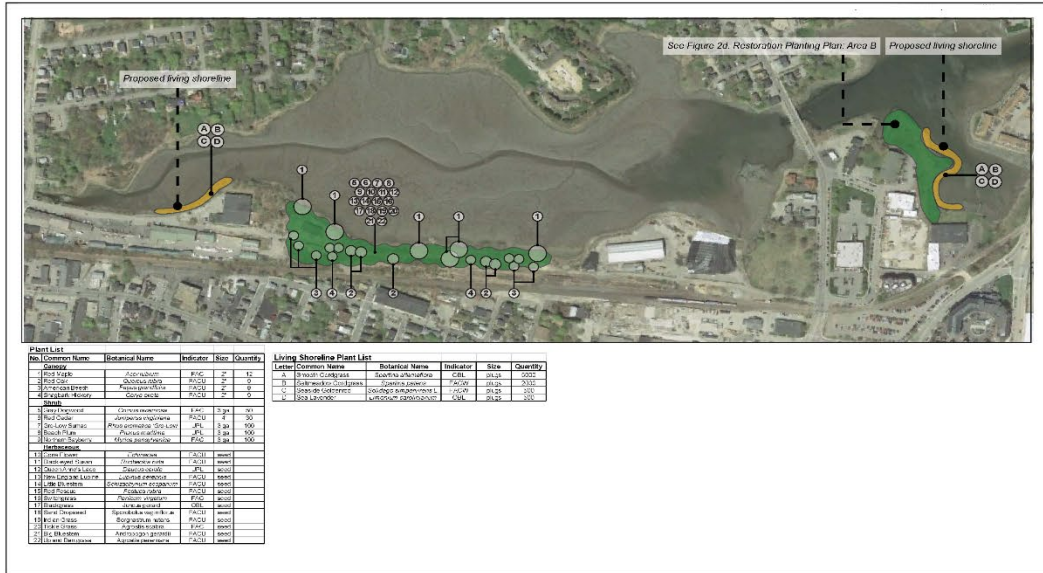


INVASIVE PLANT INVENTORY - COMMUNITY PARK



# ECOLOGICAL RESTORATION OPPORTUNITY: RESTORATION PLANTING PLANS

## NORTH MILL POND GREENWAY



AMERICAN BEECH



NEW ENGLAND LUPINE



LITTLE BLUESTEM

### RESTORATION OPPORTUNITIES - NORTH MILL POND



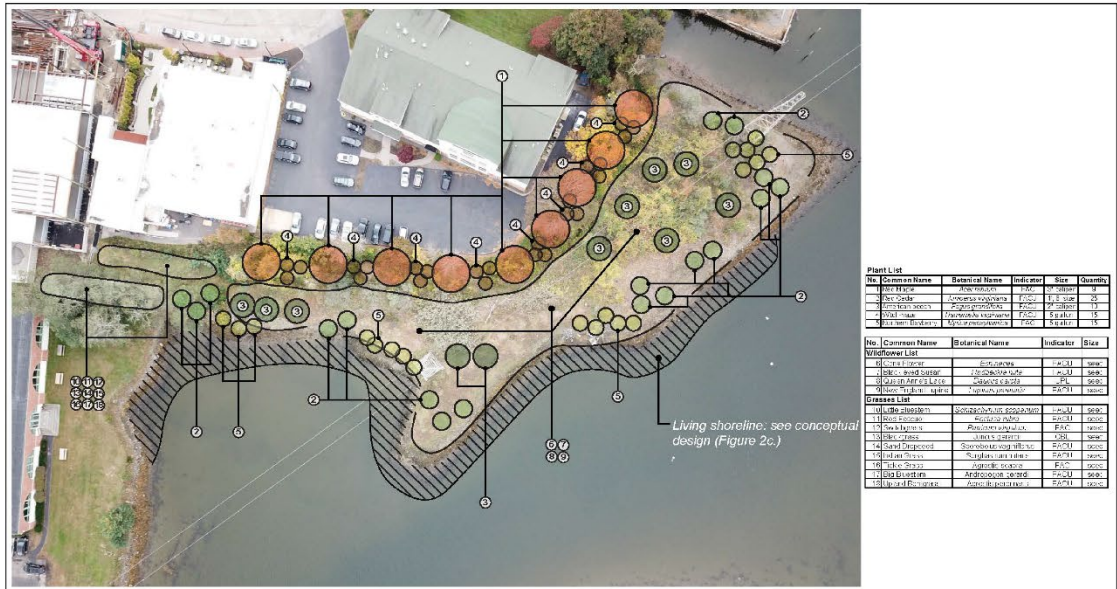
PURPLE CONEFLOWER



RED MAPLE



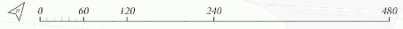
BEACH PLUM



### RESTORATION OPPORTUNITIES - COMMUNITY PARK



# PROPOSED IMPROVEMENTS NORTH MILL POND GREENWAY



## GREENWAY ALIGNMENT

- Invasive Species to be Removed
- Preferred Alignment
- Raised Boardwalk
- Alternate Alignment
- Connector Path
- Connection via Existing Sidewalk
- Rail Junction



PROPOSED SIGNALIZED / ACTIVATED CROSSWALK

TRAIL JUNCTION

PROPOSED RAISED BOARDWALK MULTI-USE PATH

PROPOSED LIVING SHORELINE

PROPOSED GREENWAY ACCESS

PROPOSED PUBLIC AMENITY SPACE WITH HISTORIC / INTERPRETIVE ELEMENTS

PROPOSED INVASIVE SPECIES TO BE REMOVED AND REPLACED WITH UPLAND PLANTING AREAS

GREENWAY ALIGNMENT TO BE 25' MINIMUM DISTANCE FROM HIGHEST OBSERVABLE TIDE LINE

PROPOSED GREENWAY ACCESS

PROPOSED RAILWAY CROSSING OR OVERPASS

GREENWAY ALIGNMENT TO BE 20' MINIMUM DISTANCE FROM CENTER OF RAIL LINE

PROPOSED ALTERNATE ALIGNMENT

PROPOSED RAISED BOARDWALK MULTI-USE PATH

TRAIL JUNCTION

PROPOSED CROSSWALK

EXISTING SIDEWALK

EXISTING SIDEWALK

PROPOSED CONNECTOR PATH

TRAIL JUNCTION

PROPOSED CROSSWALK

PROPOSED COMMUNITY SPACE

PROPOSED INVASIVE SPECIES TO BE REMOVED AND REPLACED WITH UPLAND PLANTING AREAS

PROPOSED LIVING SHORELINE

TRAIL JUNCTION

PROPOSED GREENWAY ACCESS