

Figure 2a. Invasive Species Inventory

North Mill Pond | Multi-use Trail | Portsmouth, NH



General Notes

1. Base image from Google Earth, May 2018.
2. An inventory of invasive and native plant communities was implemented in October 2018. Notes added by DeRosa Environmental Consulting, Inc. on November 1, 2018.
2. The principal strategy will be the selective removal of woody invasive plants within understory using whole plant removal techniques and multiyear maintenance.
3. Care is to be taken in removing invasive plant material to minimize disturbance to existing native plant species.
4. Disturbed soils to be seeded and hay mulched following removal. Native plants will be installed in these areas and are detailed in the Native Species Planting Plan (Figure 2c).

Michael J. DeRosa
PWS No. 2250

MJD/aem
November 1, 2018



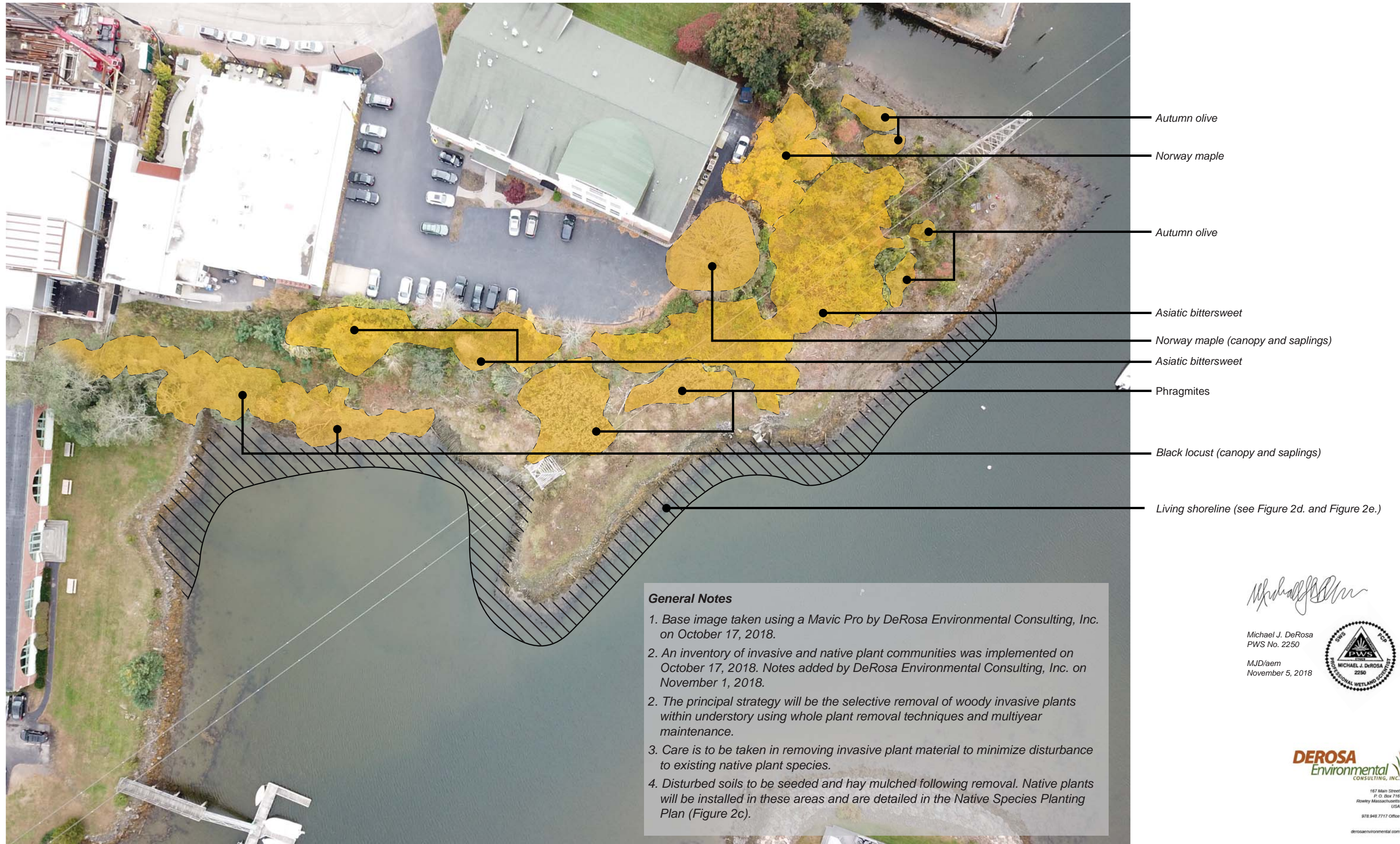
DEROSA
Environmental
CONSULTING, INC.

167 Main Street
P. O. Box 716
Rowley Massachusetts
USA

978.948.7717 Office

derosaenvironmental.com

Figure 2b. Invasive Species Management: Area B
 Proposed Park Area | North Mill Pond Multi-use Trail | Portsmouth, NH



- Autumn olive
- Norway maple
- Autumn olive
- Asiatic bittersweet
- Norway maple (canopy and saplings)
- Asiatic bittersweet
- Phragmites
- Black locust (canopy and saplings)
- Living shoreline (see Figure 2d. and Figure 2e.)

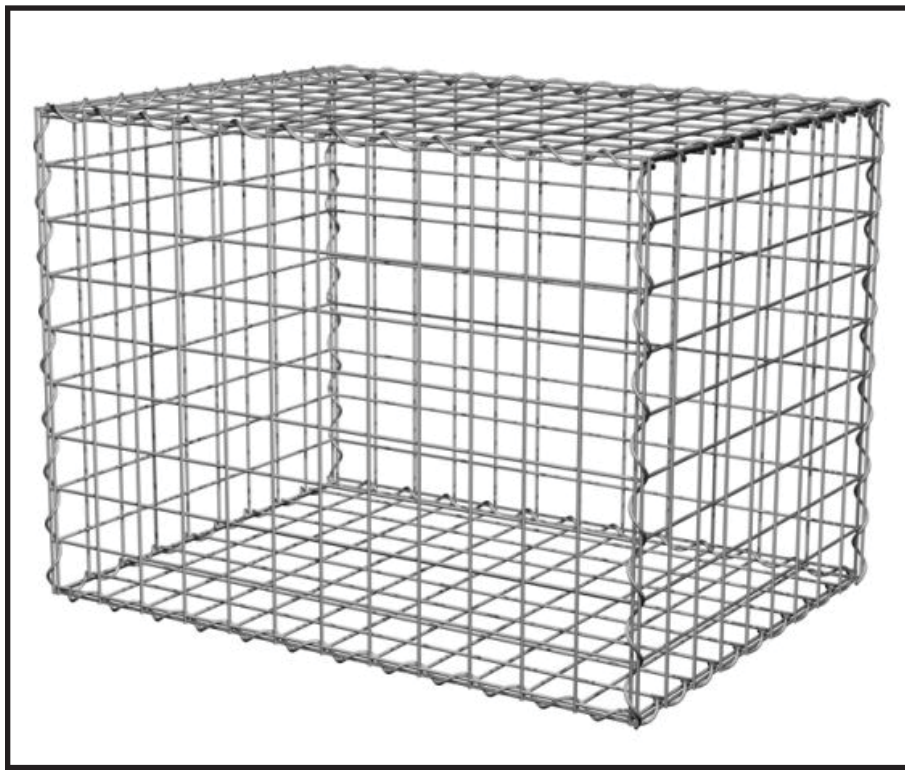
General Notes

1. Base image taken using a Mavic Pro by DeRosa Environmental Consulting, Inc. on October 17, 2018.
2. An inventory of invasive and native plant communities was implemented on October 17, 2018. Notes added by DeRosa Environmental Consulting, Inc. on November 1, 2018.
2. The principal strategy will be the selective removal of woody invasive plants within understory using whole plant removal techniques and multiyear maintenance.
3. Care is to be taken in removing invasive plant material to minimize disturbance to existing native plant species.
4. Disturbed soils to be seeded and hay mulched following removal. Native plants will be installed in these areas and are detailed in the Native Species Planting Plan (Figure 2c).

Michael J. DeRosa

Michael J. DeRosa
 PWS No. 2250
 MJD/aem
 November 5, 2018





WIRE GABIONS



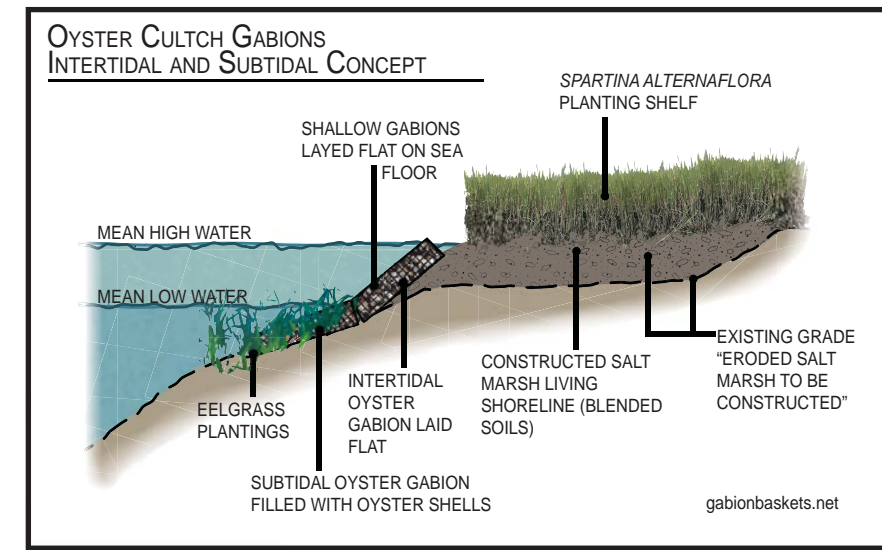
BOULDERS AS SILL STRUCTURE | PROPOSAL WILL BE TO USE WIRE GABIONS FILLED WITH OYSTER SHELL



GABIONS WITH OYSTER SHELL (CULTCH)



JOINED GABIONS

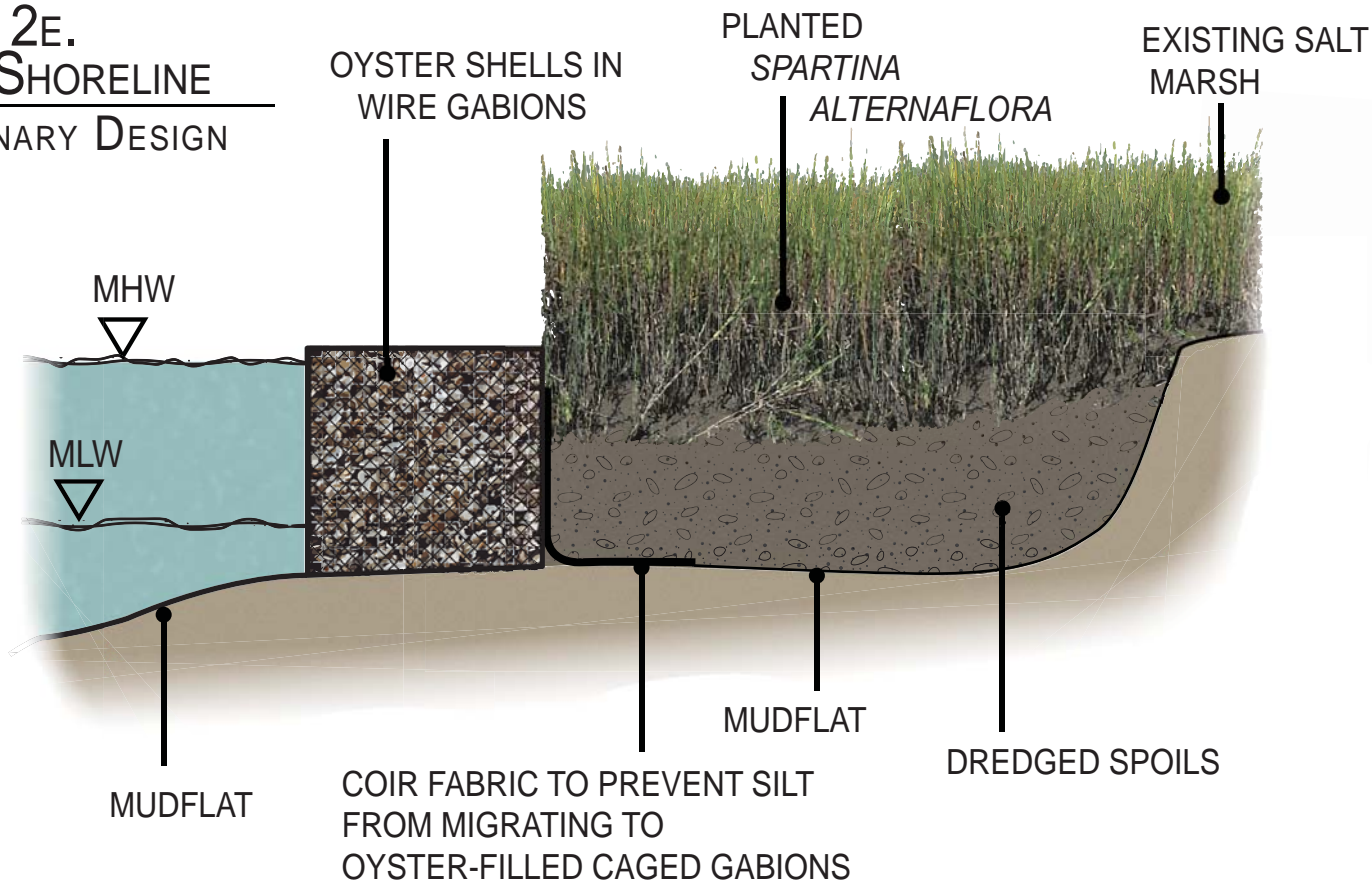


OYSTER REEF CONCEPT SKETCH

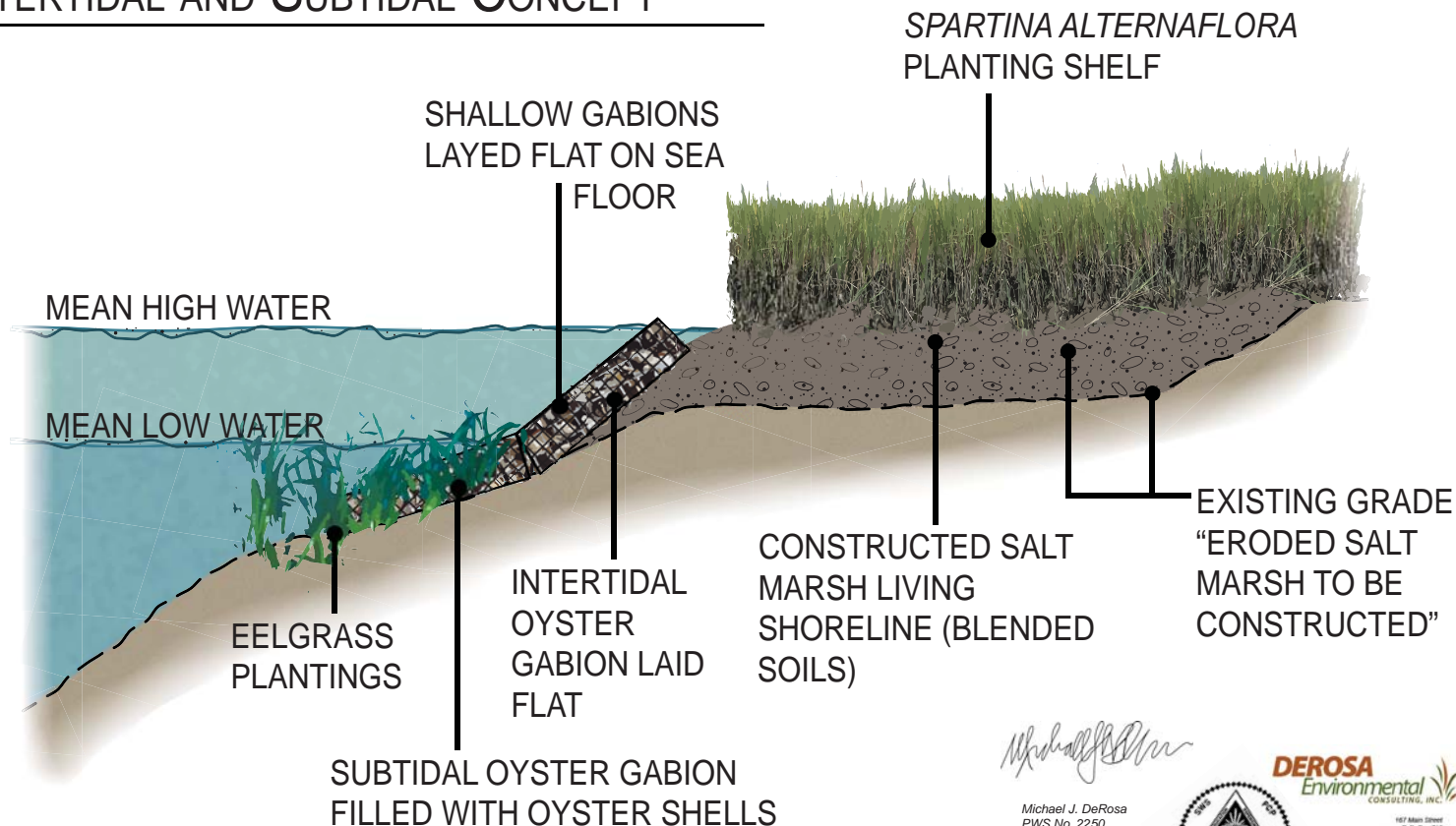
Figure 2d. Living Shoreline Images



FIGURE 2E. LIVING SHORELINE PRELIMINARY DESIGN



OYSTER CULTCH GABIONS INTERTIDAL AND SUBTIDAL CONCEPT



Michael J. DeRosa

Michael J. DeRosa
PWS No. 2250

MJD/aem
November 1, 2018



DEROSA
Environmental
CONSULTING, INC.

167 Main Street
P.O. Box 716
Attleboro, Massachusetts
01901
508-846-7717 Office
derosae.com