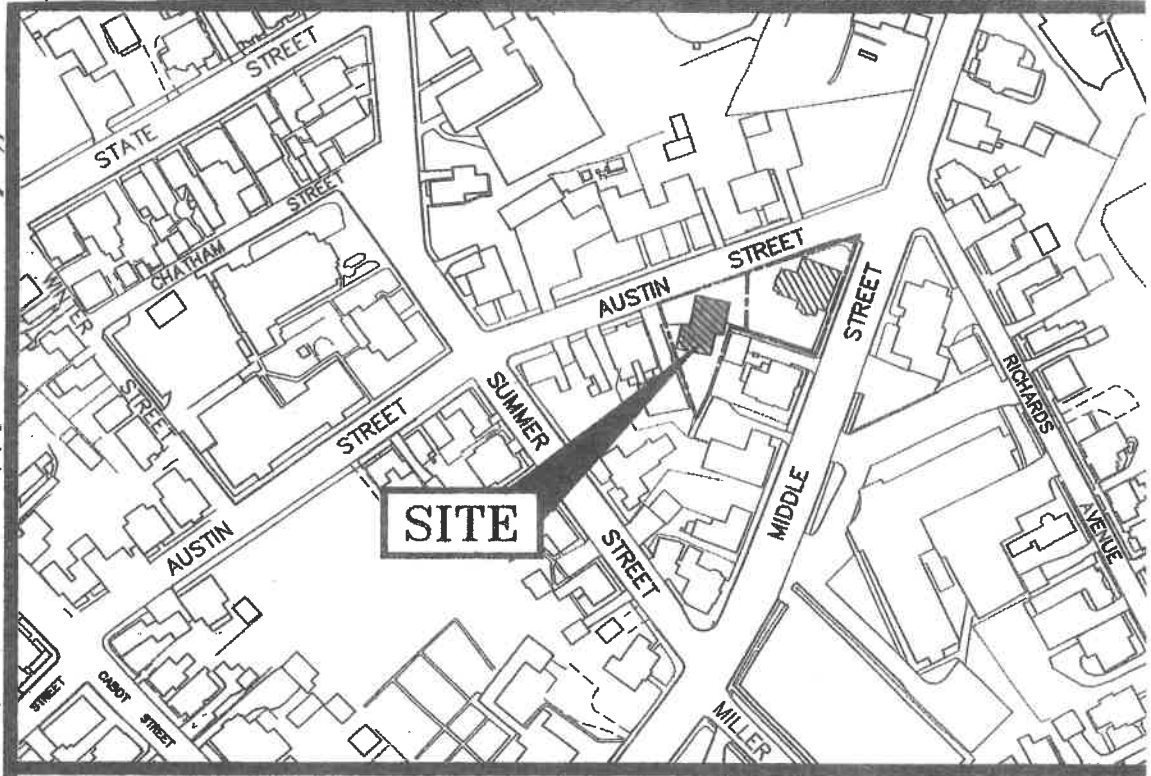
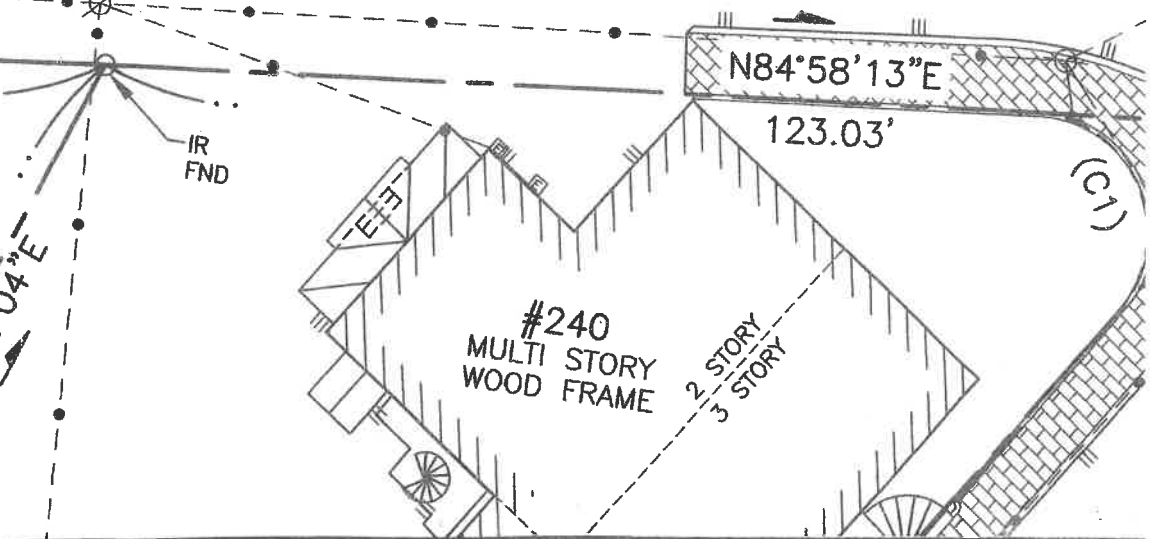
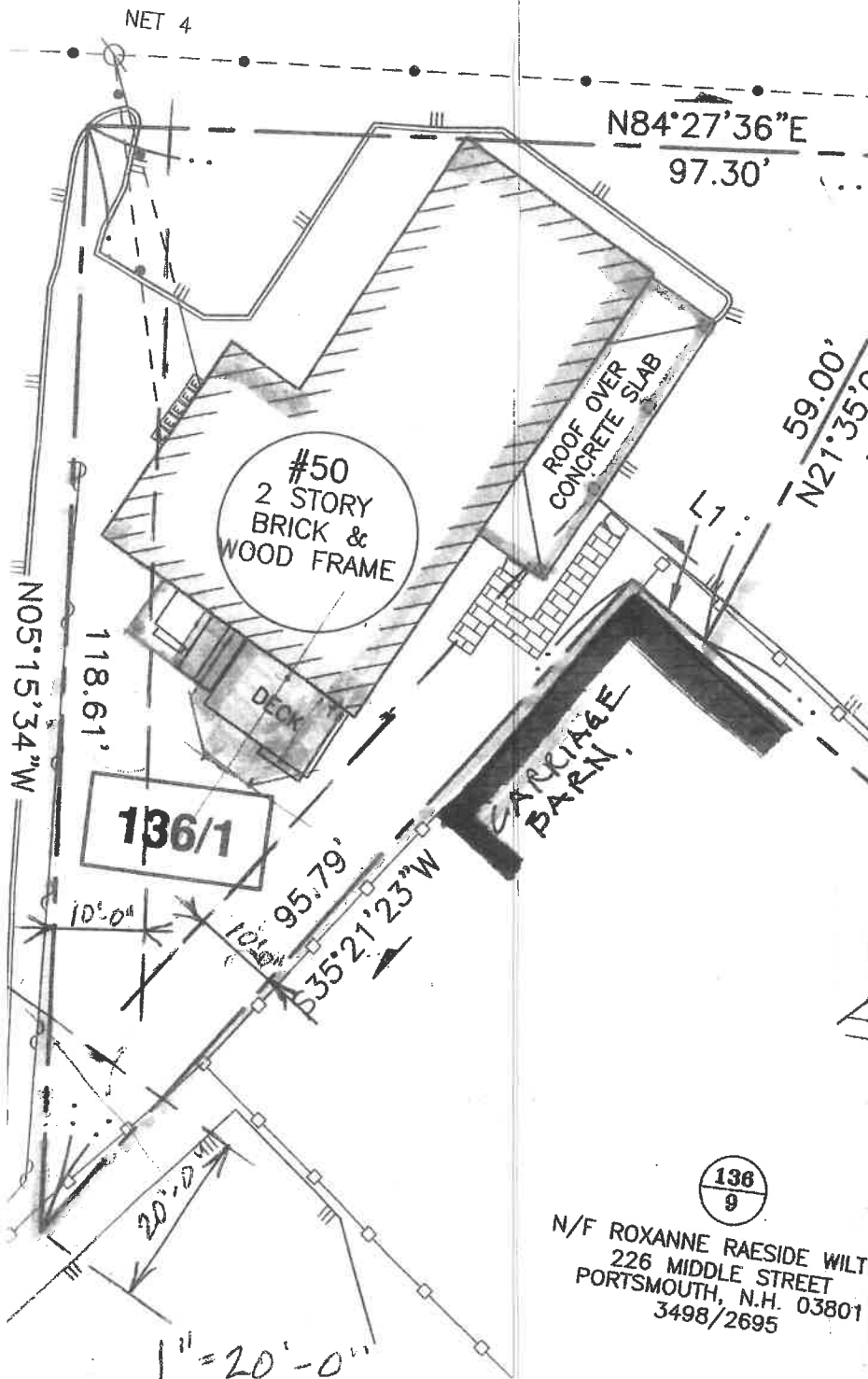


AUSTIN

STREET

247
①

05.23.20



LOCATION MAP

1" = 200'

136
9

N/F ROXANNE RAESIDE WILT
226 MIDDLE STREET
PORTSMOUTH, N.H. 03801
3498/2695

2

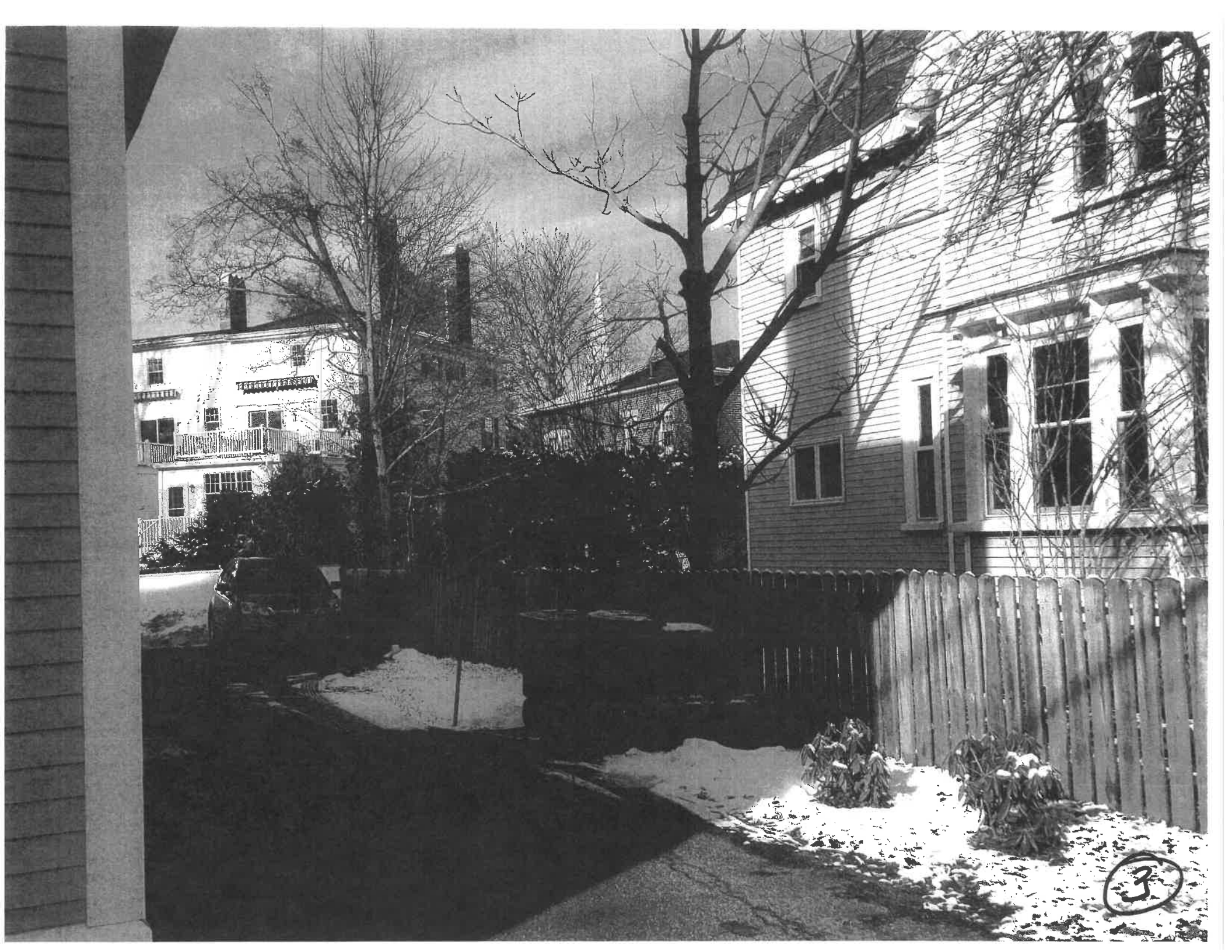
05-23-20

10.521 Table of Dimensional Standards – Residential and Mixed Residential Districts

	R	SRA	SRB	GRA	GRB	GRC	GA/MH	MRO	MRB	50 AUSTIN
Minimum Lot Dimensions										
Lot area	5 acres	1 acre	15,000 sf	7,500 sf	5,000 sf	3,500 sf	5 acres	7,500 sf	7,500 sf	6247sf 6247sf
Lot area per dwelling unit	5 acres	1 acre	15,000 sf	7,500 sf	5,000 sf	3,500 sf	10,000 sf	7,500 sf	7,500 sf	
Continuous street frontage	NA	150'	100'	100'	80'	70'	N/A	100'	100'	97.30'
Depth	NA	200'	100'	70'	60'	50'	N/A	80'	80'	118' varies
Minimum Yard Dimensions										
Front	50'	30'	30' ¹	15'	5'	5'	30' ¹	5'	5' ¹	Coverage exist. - 1164sf 1448
Side	20'	20'	10'	10'	10'	10'	25'	10'	10'	1692sf
Rear	40'	40'	30'	20'	25'	20'	25'	15'	15'	
Maximum Structure Dimensions										
Structure height	35'	35'	35'	35'	35'	35' ²	35' ²	40'	40'	Addition - 200sf 244
Roof appurtenance height	8'	8'	8'	8'	8'	8'	8'	10'	10'	
Building coverage	5%	10%	20%	25%	30%	35%	20%	40%	40%	27%
Minimum open space	75%	50%	40%	30%	25%	20%	50%	25%	25%	4552sf

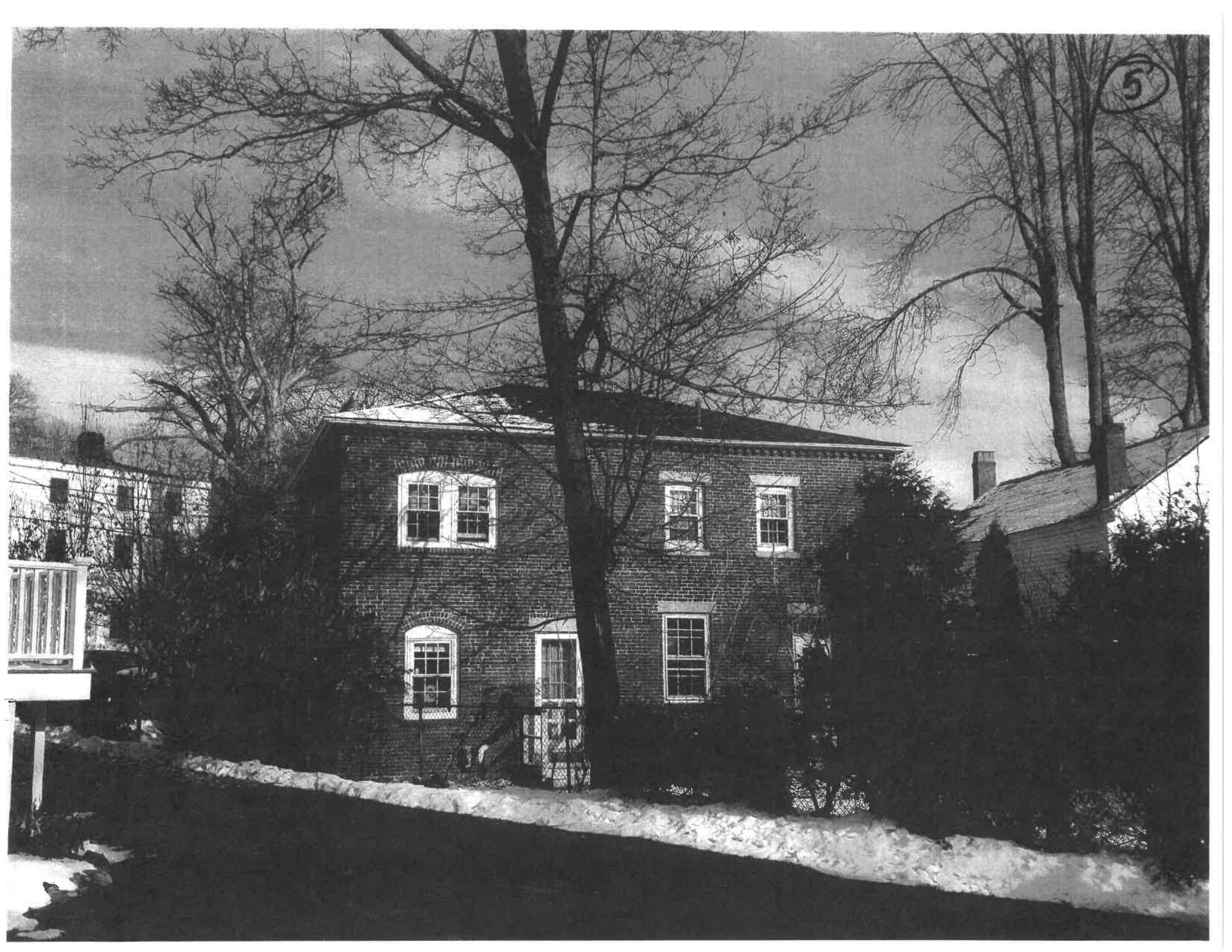
NA = Not Applicable NR = No Requirement

- Notes:
- 1. See Section 10.533 for special requirements on Lafayette Road.
 - 2. Within the General Residence C and Garden Apartment/Mobile Home Park districts an additional 8' of height may be added to the maximum structure height in order to provide for multifamily dwellings that include vehicular parking spaces located within the residential building itself, if the additional height results in increased open space when compared to a site plan showing what open spaces would remain if required parking spaces were located in the open and in accessory structures.



3





5

6



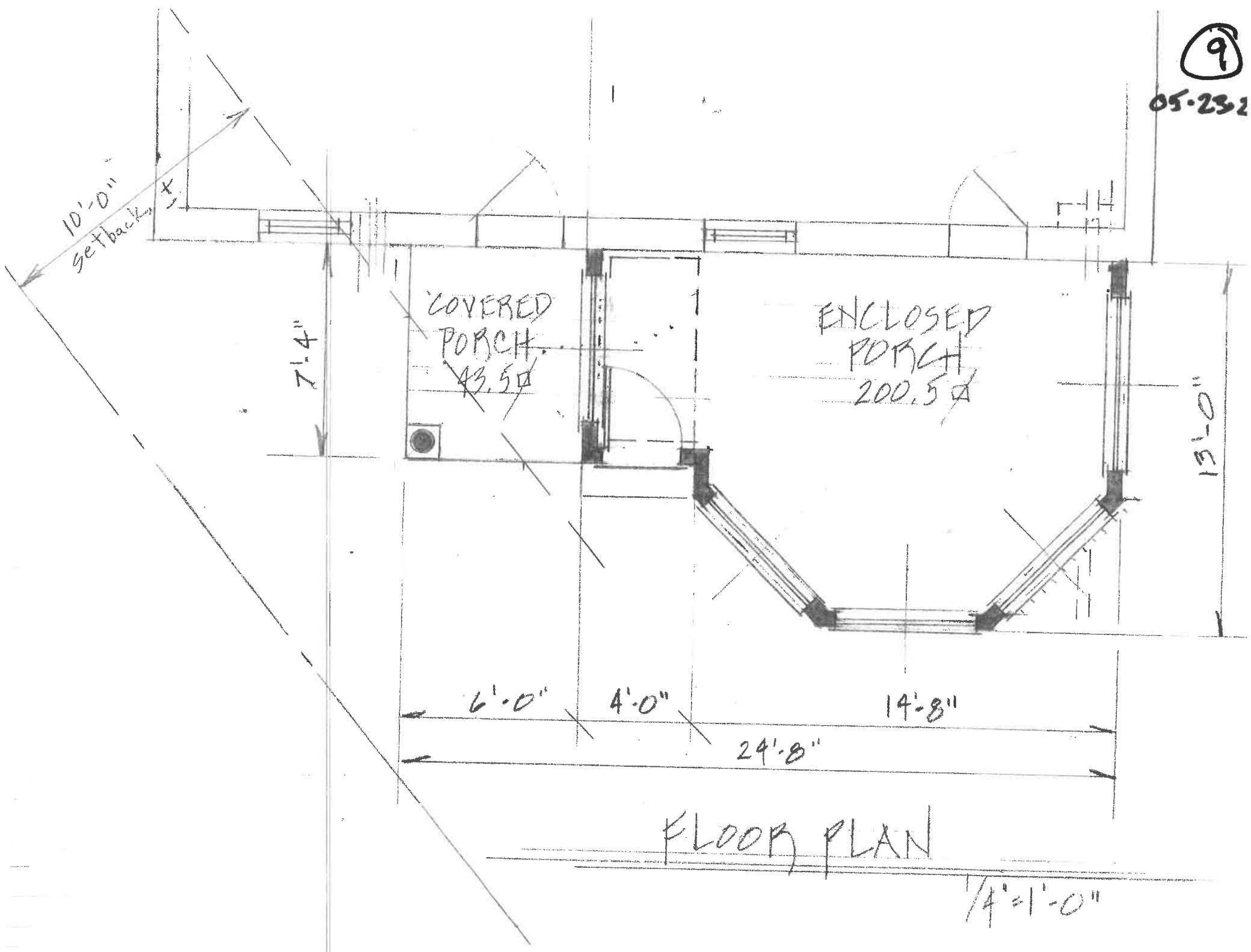


NEW TO MATCH



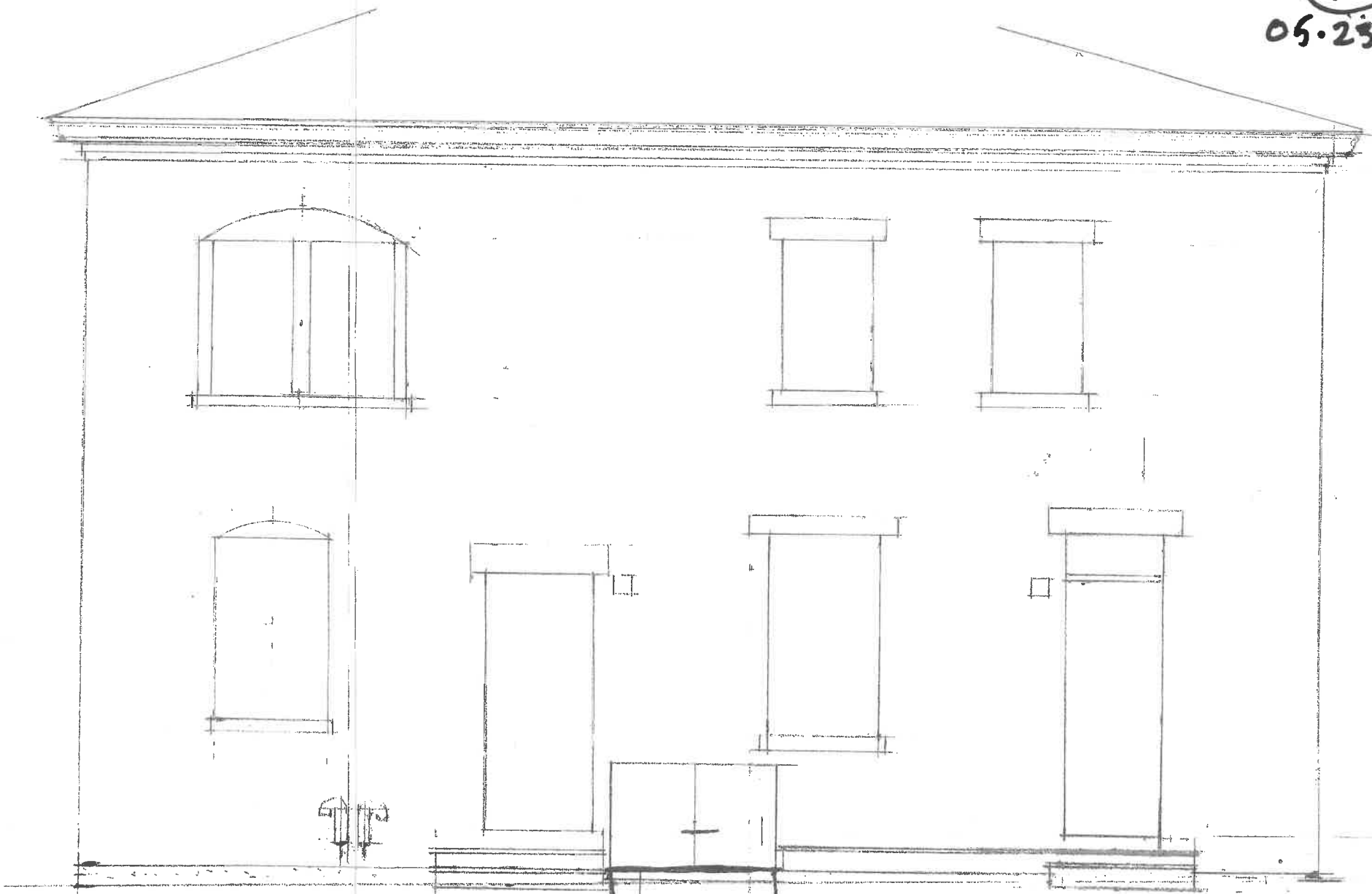
9

05-23-2



10

05.23.20



EXISTING GARDEN ELEVATION - 1/8"=1'-0"

11

05.25.20

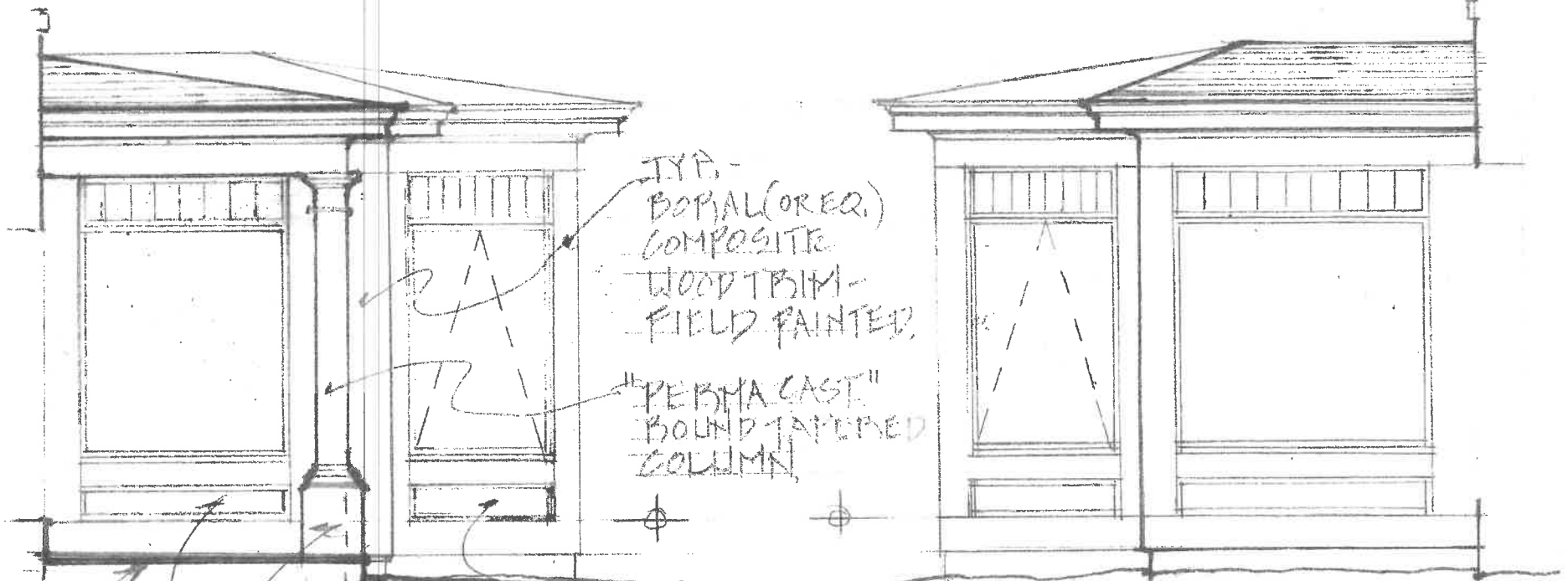


GARDEN ELEVATION

1/4" = 1'-0"

12

05.23.20



TYP. -
BORAL (OR EQ.)
COMPOSITE
WOOD TRIM -
FIELD PAINTED

"PERMA CAST"
BOUND TAMPED
COLUMN

BORAL PANEL
TYP. -
AZEK DECKING

L. SIDE ELEVATION

R. SIDE ELEVATION

13

05.23.20

WHEN'S CORNING TRUE
DEFINITION END SHINGLES
W/FULL ICE & WATER SHIELD,
COLOR TO MATCH EXISTING

MATCH EXISTING PORCH
OVER ANG/PASCIA DETAIL

BROSCO
#8006 CROWN,
W/ #8019 BED,

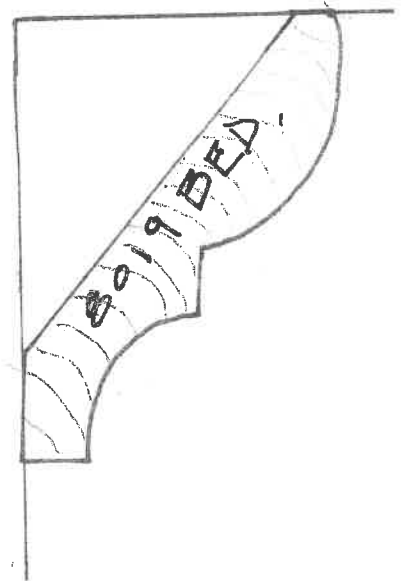
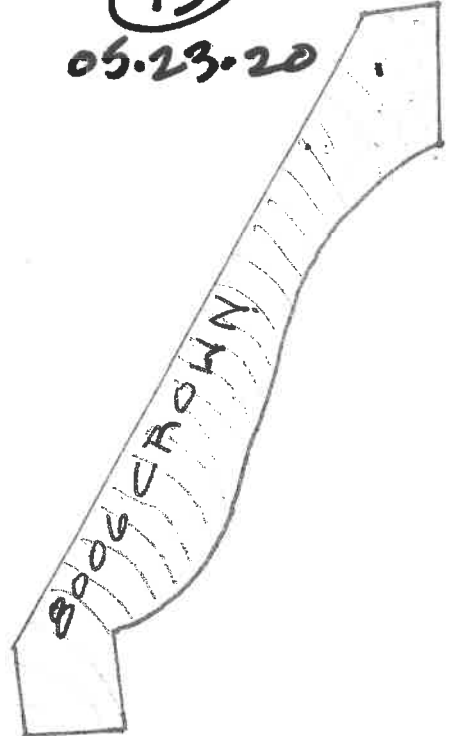
8'-3" M.O.

8'-3"

9'-6"

BROSCO
#B-660
BASE OR
SIM. AS PANEL
MOULD.

GRANITE
STOOP



SECTION THRU BULKHEAD

1/4" = 1'-0"

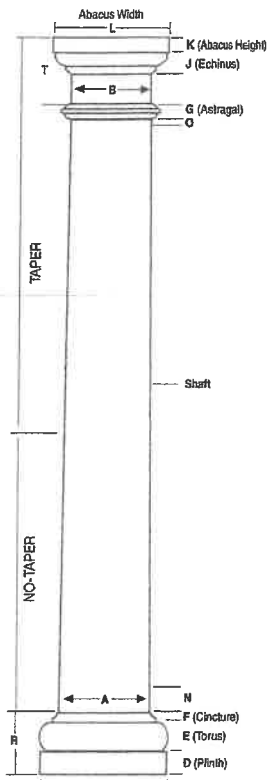
Round Tapered PERMACast® Columns

COL. SIZE	A	B	C	D	E	F	G	J	K	L	O	N	R	T	LENGTHS AVAIL. (ft.)
6"	5 1/4"	4 3/4"	9"	1 1/8"	1 1/4"	3/8"	3/4"	1 1/4"	1 3/8"	8"	1"	6 1/4"	3 3/8"	4 3/8"	4,6,8
8"	7"	6 1/4"	10 1/2"	1 7/8"	1 3/4"	3/4"	3 3/8"	1 1/4"	1 1/2"	9 1/4"	1 1/2"	2 1/4"	4 1/2"	4 1/4"	5,6,8,10,12
10"	9"	8 1/4"	13 1/2"	2 1/8"	2 1/4"	3/4"	1 1/2"	1 1/4"	1 3/4"	11 1/4"	1 3/4"	2 3/4"	5 1/4"	5"	6,8,10,12,14
12"	11 1/4"	9 3/4"	16 1/2"	2 3/4"	2 3/4"	7/8"	1 3/4"	1 3/4"	2 1/4"	13 3/4"	3/4"	2 3/4"	6 1/4"	5 3/4"	8,10,12,14,16,18
14"	13 1/4"	11 1/4"	19 1/2"	3 3/8"	3 3/8"	1 1/8"	1"	2"	2 1/4"	17"	1 1/2"	2 3/4"	7 1/4"	7"	9,10,12,14,16,18
16"	15 1/4"	13 3/8"	22"	3 3/8"	3 3/8"	1 1/8"	1 1/4"	2 1/4"	2 3/4"	19 3/8"	1"	3"	8 3/8"	8"	10,12,14,16,18,20
18"	17 1/4"	15 3/8"	24 1/2"	4"	4"	1 1/8"	1 1/4"	2 3/4"	3"	22 3/8"	1 1/2"	10 3/4"	9 3/8"	8 3/8"	8,10,12,14,16,18,20,22,24,26
20"	19 1/4"	17 3/8"	27"	4 3/4"	4 3/4"	2"	1 3/8"	2 3/4"	3 3/8"	24 3/8"	1 1/2"	10 3/4"	11 1/4"	9"	10,12,14,16,18,20,22,24
22"	21 1/4"	19 3/8"	30 1/2"	5"	5"	2"	1 1/2"	3"	3 3/4"	27 3/8"	1 1/2"	10 3/4"	12"	10 3/4"	16,18,20,22,24,26
24"	23 1/4"	21 3/8"	33 1/2"	6"	5 3/4"	2 1/4"	2"	3 1/2"	4"	30 3/8"	1 1/2"	10 3/4"	13 1/4"	11 3/4"	12,14,16,18,20,22,24,26,28,30
28"	28"	24 3/8"	38"	6 3/4"	6 3/4"	2 3/4"	2 1/4"	3 3/4"	4 1/4"	33 3/8"	1 1/2"	10 3/4"	15 1/4"	11 3/4"	20,22,24,26,28
30"	29 1/4"	26 3/8"	41 1/2"	6 3/4"	5 3/4"	2 1/2"	3"	4"	4 3/4"	38 3/8"	1 1/2"	10 3/4"	14 3/4"	14 3/4"	20,22,24,26,28,30

*There may be a variance of up to 1/4" in all dimensions. Fluted columns available in all diameters. See page 16 for Parallel dimensions. See page 18 for Decorative Capital dimensions. □ Standard Fluted Column (Fluted in mold)

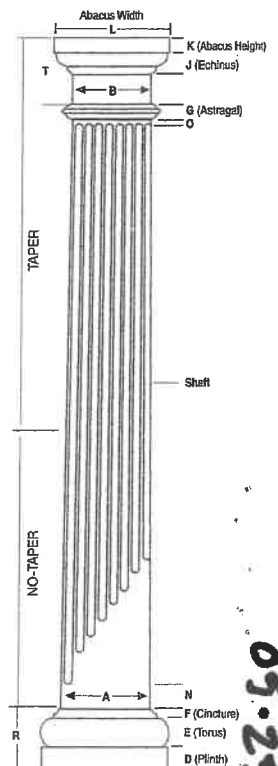
• Split columns are not load bearing.

Poly Tuscan Cap



Poly Tuscan Base Plain Column

Poly Tuscan Cap



Poly Tuscan Base Fluted Column

COLUMN-LOC®

Column-Loc® creates a continuous connection from floor to beam/header without the expense of splitting and reattaching the column. This labor saving product is easy to install and delivers wind uplift resistance especially important in coastal and high wind areas. Currently available for 8" and 10" round (tapered and no-taper) and square PermaCast® columns. Kits are available with and without threaded rod in lengths up to 12'.



ROUND PERMACAST® INSIDE DIMENSIONS

Inside dimension may vary up to 1/8". Splitting a column will decrease inside dimension 1/8".



COLUMN SIZE	TOP I.D.	BOT I.D.
6"	3 3/8"	4 1/8"
8"	5 1/4"	6 1/4"
10"	7 1/4"	8 1/4"
12"	8 3/4"	10 3/4"
14"	10 1/4"	12 1/4"
16"	12 1/4"	15"
18"	14 1/4"	16 3/4"
20"	16 1/4"	18 3/4"
22"	18 3/4"	20 3/4"
24"	20"	22 3/4"
28"	22 1/4"	26 3/4"
30"	25 1/4"	28 3/4"

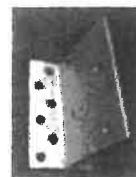
*Plain columns only

PLUMB-FIT®

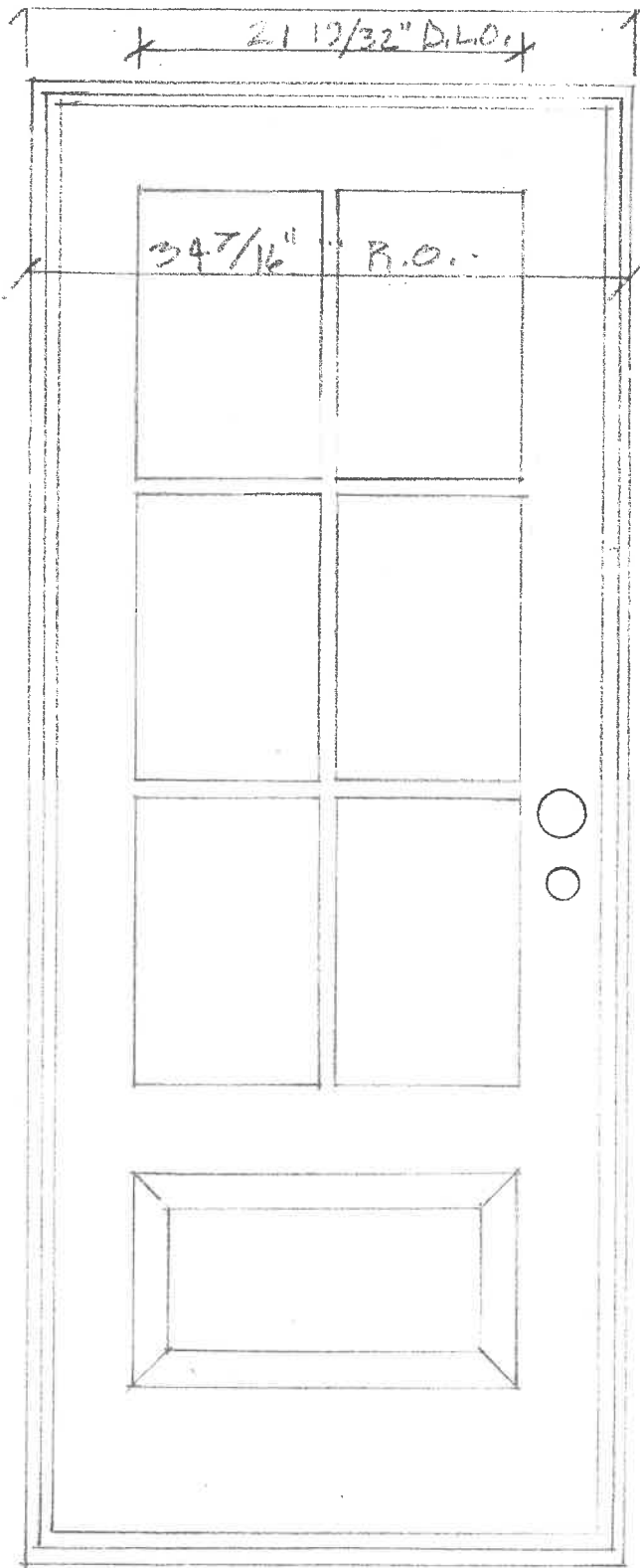
To make installation even easier our 6"-12" round and square poly Tuscan Cap and Base Sets with flashing cap come with the Plumb-Fit® patented (Patent 9689674) installation system included.

ROUND PERMACAST® PORCH INSTALLATION BRACKET

The HB&G Porch Installation Bracket includes the bracket and all required hardware. The bracket fits 20" - 30" Plain Round PermaCast® Columns and will secure a 2nd story porch to our PermaCast® Columns. Three brackets are required for each column.



05-25-20
14



$49 \frac{23}{64}$ P.L.O.
 $5 \frac{1}{2}$ P.L.O.

THERMA-TRU FIBER GLASS - 50L W/GPAs
 LEAD GLASS - SIMULATED DIVIDED LIGHTS W/ BRONZE
 GRILLS BETWEEN GLASS CONTAIN MULTIPASS

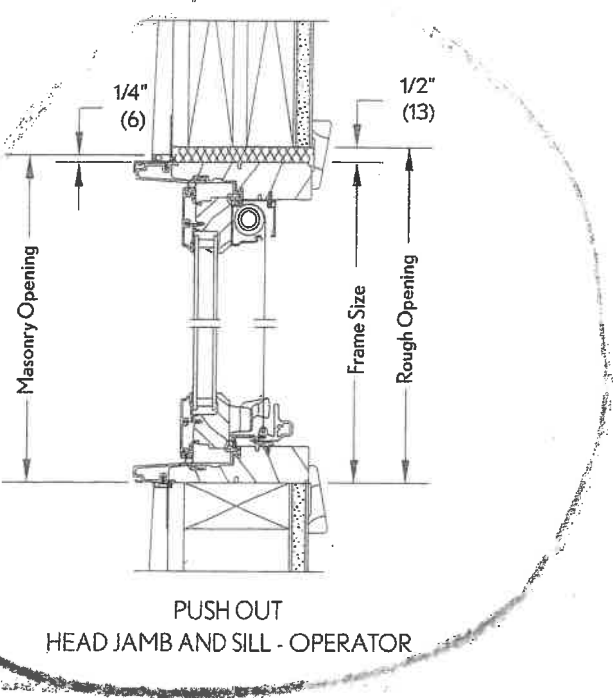
15
 05-23-2

16
05.23.2

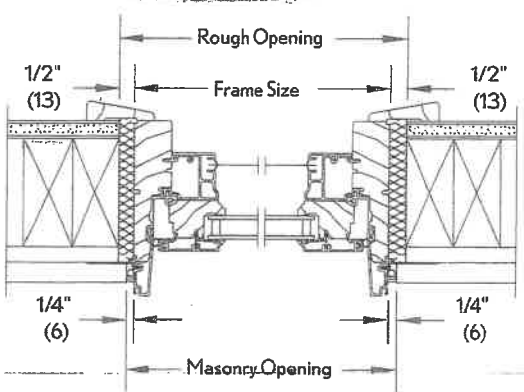
Marvin

CLAD ULTIMATE PUSH OUT AWNING

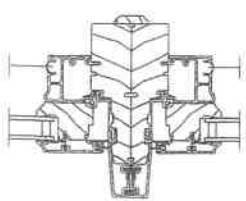
CONSTRUCTION DETAILS



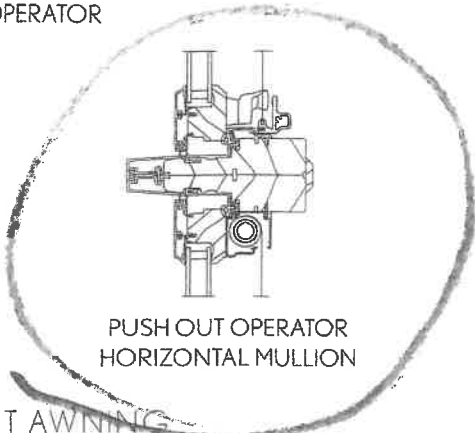
PUSH OUT HEAD JAMB AND SILL - OPERATOR



PUSH OUT JAMB - OPERATOR



PUSH OUT OPERATOR VERTICAL MULLION



PUSH OUT OPERATOR HORIZONTAL MULLION



PUSH OU VERTIC

CLAD ULTIMATE AWNING/PUSH OUT AWNING

Max. Opp. (mm)	Rel. Opp. (mm)	Frame Size (mm)	Glass Size (mm)	Product Code
1-4 1/2 (419)	1-5 (431)	1-4 (406)	11 9/32 (287)	CJAWN1614 CUPAWN1614
1-6 1/2 (469)	1-7 (482)	1-6 (487)	13 9/32 (337)	CJAWN1814 CUPAWN1814
1-8 1/2 (520)	1-9 (533)	1-8 (508)	15 9/32 (388)	CJAWN2014 CUPAWN2014
2-1 1/2 (622)	2-1 (635)	2-0 (609)	19 9/32 (490)	CJAWN2414 CUPAWN2414
2-2 1/2 (673)	2-3 (688)	2-2 (660)	21 9/32 (541)	CJAWN2614 CUPAWN2614
2-4 1/2 (723)	2-5 (736)	2-4 (711)	23 9/32 (591)	CJAWN2814 CUPAWN2814
2-6 1/2 (774)	2-7 (787)	2-6 (762)	25 9/32 (642)	CJAWN3014 CUPAWN3014
2-8 1/2 (825)	2-9 (838)	2-8 (812)	27 9/32 (693)	CJAWN3214 CUPAWN3214
3-1 1/2 (927)	3-1 (939)	3-0 (914)	31 9/32 (795)	CJAWN3614 CUPAWN3614
3-4 1/2 (1028)	3-5 (1041)	3-4 (1016)	35 9/32 (896)	CJAWN4014 CUPAWN4014
				CJAWN4016 CUPAWN4016
				CJAWN3616 CUPAWN3616

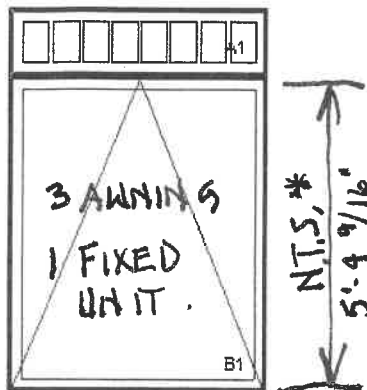
W/5LT.

BAY & COVERED PORCH.

Maher, Sky
 awnings

Quote Number: GMFJTYH

MARVIN



As Viewed From The Exterior

Entered As: Size by Units
 RO 61" X ~~86 3/4"~~
 Egress Information A1, B1
 No Egress Information available.

B1 - AWNINGS
W/AWN 7264T
6064T.

*** REPRESENTATIONAL**
DIAGRAM - UNIT
MODIFIED LENGTH &
OPERATIONS TO
1 FIXED UNIT.

1W2H - Rectangle Assembly
 Assembly Rough Opening
 61" X 86 3/4"

Unit: A1
 Ultimate Awning - Stationary
 CN 6016
 Rough Opening 61" X 15 5/8"
 Frame Size 60" X 15 1/8"
 Stone White Clad Sash Exterior
 Painted Interior Finish - White - Pine Sash Interior
 IG - 3/4"
 Low E2
 Capillary Tube
 Stainless Perimeter and Spacer Bar
 7/8" SDL - With Spacer Bar - Stainless
 Rectangular - Special Cut 8W1H
 Stone White Clad Ext - Painted Interior Finish - White - Pine Int
 Ogee Interior Glazing Profile
 Standard Bottom Rail
 White Weather Strip
 Solid Wood Covers

Unit: B1
 Ultimate Awning - Roto Operating
 CN 6072
 Rough Opening 61" X ~~71 5/8"~~
 Frame Size 60" X ~~71 1/8"~~
 Stone White Clad Sash Exterior
 Painted Interior Finish - White - Pine Sash Interior
 IG - 1 in - 1 Lite
 Tempered Low E2 w/Argon
 Stainless Perimeter Bar
 Ogee Interior Glazing Profile
 Standard Bottom Rail
 White Weather Strip
 Matte Black Folding Handle
 Matte Black Multi - Point Lock
 Aluminum Screen
 White Surround
 Charcoal Hi-Transparency Fbrgls Mesh
 Standard Mull Charge
 6 9/16" Jamb
 AL Nailing Fin
 ***Note: This configuration meets a minimum structural performance of DP 20 through either physical testing or calculations in accordance with AAMA 450 and building code requirements. Mull certification ratings may vary from individual unit certification ratings. Reference the mulling chapter of the ADM for additional information.
 ***Note: Capillary tubes will be added to ALL Low E glass types without Argon.
 ***Note: Unit Availability and Price is Subject to Change

Line #5	Mark Unit:			
Qty: 1				

MARVIN

Stone White Clad Exterior
 Painted Interior Finish - White - Pine Interior
 Ultimate Inswing French Door 4 9/16" - X Left Hand
 CN 2868
 Rough Opening 34 7/16" X 82 1/2"
 Traditional Panels
 Stone White Clad Sash Exterior
 Painted Interior Finish - White - Pine Sash Interior
 IG
 Tempered Low E2 w/Argon
 Stainless Perimeter and Spacer Bar
 7/8" SDL - With Spacer Bar - Stainless
 Rectangular - Special Cut 3W3H
 Stone White Clad Ext - Painted Interior Finish - White - Pine Int
 Ogee Interior Glazing Profile
 Stamped Raised Panel Visible Panel Height 12 1/64"

05.23.20
 (17)

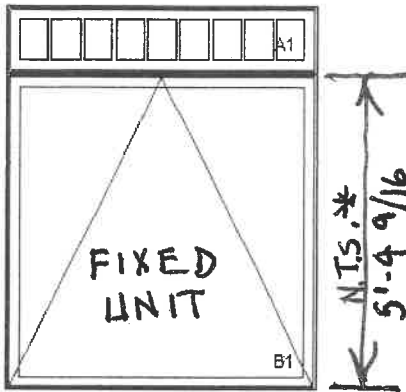
R. SIDE ELEVATION

LINE ITEM QUOTES

The following is a schedule of the windows and doors for this project. For additional unit details, please see Line Item Quotes. Additional charges, tax or Terms and Conditions may apply. Detail pricing is per unit.

Line #3	Mark Unit: 5 mullid unit			
Qty: 1				

MARVIN 



Entered As: Size by Units
 RO 73" X ~~86 3/4"~~
 Egress Information A1, B1
 No Egress Information available.

**FIXED UNIT
 7264T.**

***REPRESENTATIONAL
 DIAGRAM - B1 UNIT
 MODIFIED LENGTH, &
 OPERATION TO FIXED.**

Stone White Clad Exterior
 Painted Interior Finish - White - Pine Interior
 1W2H - Rectangle Assembly
 Assembly Rough Opening
 73" X ~~86 3/4"~~

Unit: A1
 Ultimate Awning - Stationary
 CN 7216
 Rough Opening 73" X 15 5/8"
 Frame Size 72" X 15 1/8"
 Stone White Clad Sash Exterior
 Painted Interior Finish - White - Pine Sash Interior
 IG - 3/4"
 Low E2
 Capillary Tube
 Stainless Perimeter and Spacer Bar
 7/8" SDL - With Spacer Bar - Stainless
 Rectangular - Special Cut 9W1H
 Stone White Clad Ext - Painted Interior Finish - White - Pine Int
 Ogee Interior Glazing Profile
 Standard Bottom Rail
 White Weather Strip
 Solid Wood Covers

Unit: B1
 Ultimate Awning - Roto Operating
 CN 7272
 Rough Opening 73" X ~~71 1/8"~~ **5'-4 9/16"**
 Frame Size 72" X 71 1/8"
 Stone White Clad Sash Exterior
 Painted Interior Finish - White - Pine Sash Interior
 IG - 1 in - 1 Lite
 Tempered Low E2 w/Argon
 Stainless Perimeter Bar
 Ogee Interior Glazing Profile
 Standard Bottom Rail
 White Weather Strip
 Matte Black Folding Handle
 Matte Black Multi - Point Lock
 Aluminum Screen
 White Surround
 Charcoal Hi-Transparency Fbrgls Mesh
 Standard Mull Charge
 6 9/16" Jambs
 AL Nailing Fin
 ***Note: This configuration meets a minimum structural performance of DP 20 through either physical testing or calculations in accordance with AAMA 450 and building code requirements. Mull certification ratings may vary from individual unit certification ratings. Reference the mulling chapter of the ADM for additional information.
 ***Note: Capillary tubes will be added to ALL Low E glass types without Argon.
 ***Note: Unit Availability and Price is Subject to Change

Line #4	Mark Unit: 5 mullid unit			
Qty: 4				

Stone White Clad Exterior
 Painted Interior Finish - White - Pine Interior

05.23.20
 18