



Windows

4 at 1st Floor, 6/6 SDL
Frame +/- 25" x 49"

5 at 2nd Floor, 6/6 SDL
Frame +/- 25" x 45"

2 at Left 1-Story, 6/6 SDL
Frame +/- 28" x 45"



Front Elevation

Replace Existing Windows with Marvin Elevate Doublehung.
Exterior Cladding Bronze. Paint frame & Sill to match existing trim.
Match Existing Sizes & Trim..

34 Blossom Street, Lassen Residence

11/13/20

1 of 3

Windows

2 at 1st Floor, 6/6 SDL
Frame +/- 25" x 49"

3 at 2nd Floor, 6/6 SDL
Frame +/- 25" x 45"

2 at 1-Story, 6/6 SDL
Frame +/- 28" x 45"



Replace Door & Window with 10 Lite
Glazed Doors. See 3 of 3.

Rear Elevation

Replace Existing Windows with Marvin Elevate Doublehung.
Exterior Cladding Bronze. Paint frame & Sill to match existing trim.
Match Existing Sizes & Trim..

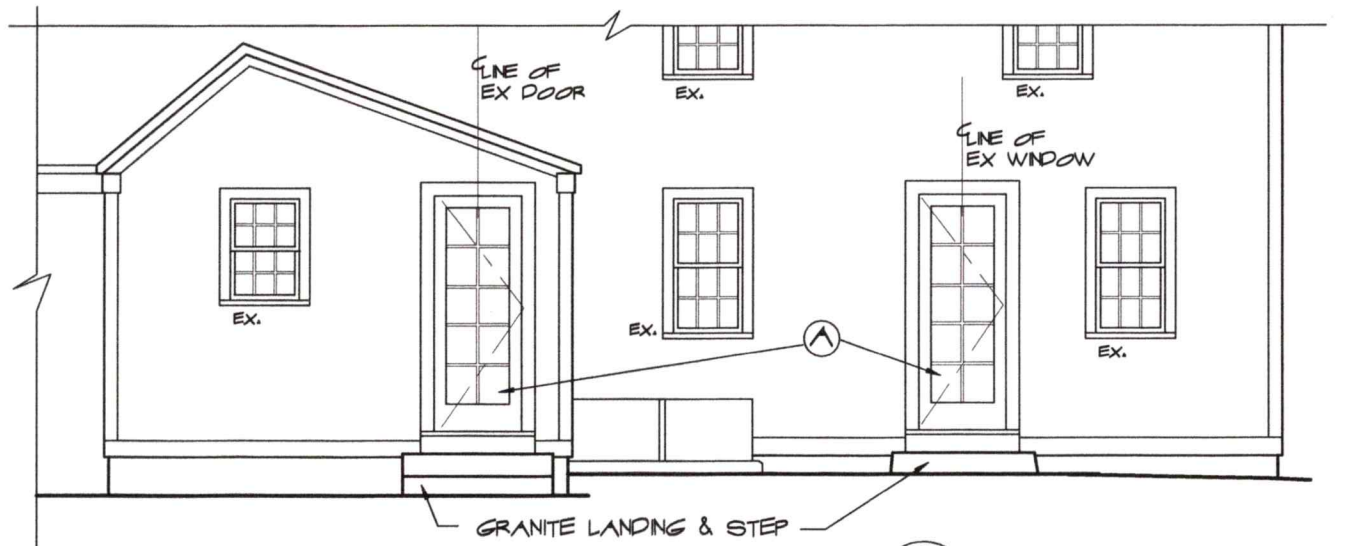
34 Blossom Street, Lassen Residence

11/13/20

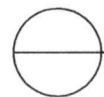
2 of 3



EXISTING REAR VIEWS



Ⓐ SIMPSON FIR DOOR #37010,
10 LITE 7/8" SDL, WITH OAK SILL.
RO = 2' 8" X 6' 8.5"



REAR ELEVATION
SCALE : 3/16" = 1'-0"

34 BLOSSOM STREET

9 Sheafe Street
Portsmouth
NH 03801
603-427-2832

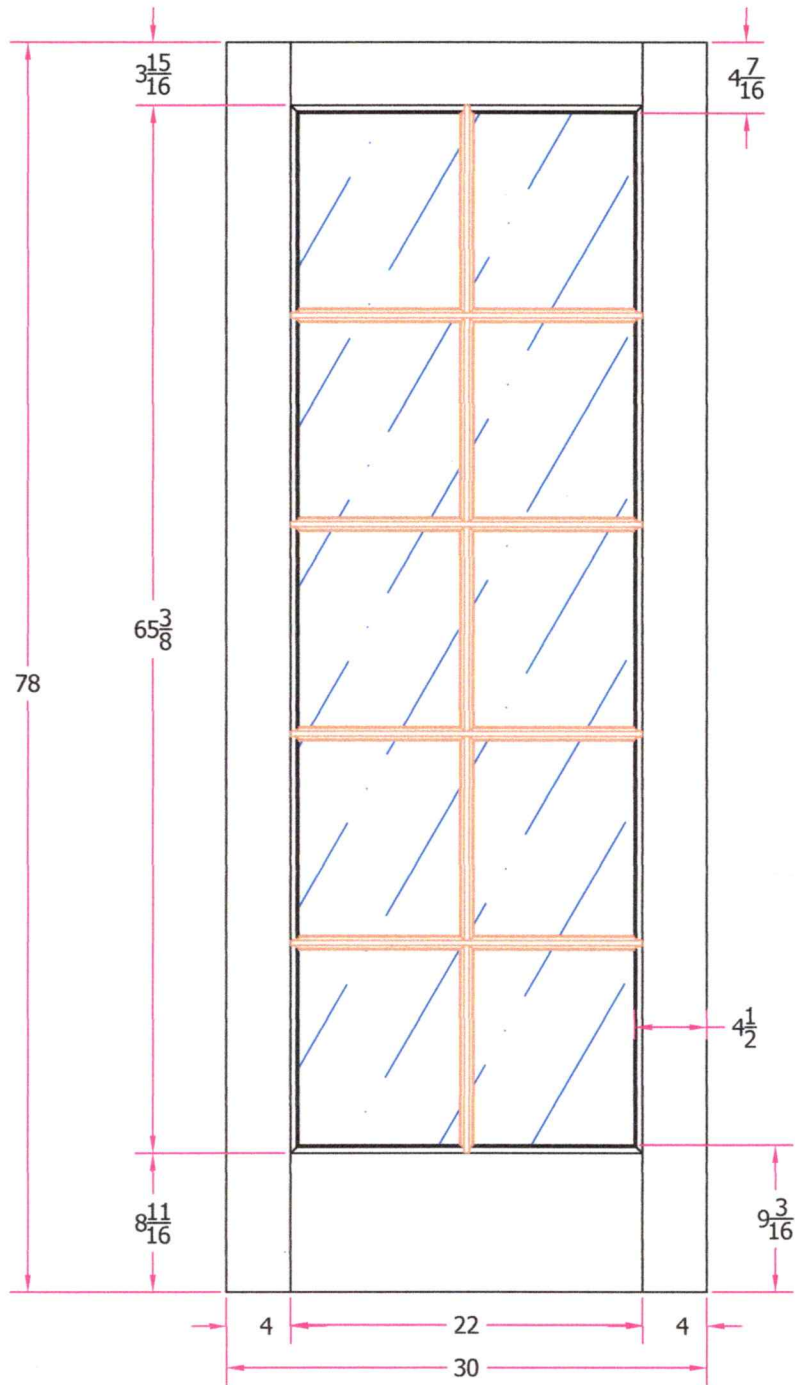
A//

ANNE WHITNEY ARCHITECT

Project:
2010

Date:
11/10/20

3 of 3



A

THIS DRAWING AND THE INFORMATION CONTAINED HEREIN IS PROPRIETARY TO SIMPSON DOOR COMPANY AND SHALL NOT BE REPRODUCED, COPIED OR DISCLOSED IN WHOLE OR PART, OR USED FOR MANUFACTURE OR FOR ANY OTHER PURPOSE WITHOUT THE WRITTEN PERMISSION OF SIMPSON DOOR COMPANY.

Revisions

Rev. #	Description	Date	by Whom

TITLE 37010 2/6 x 6/6
Customer Layout

DRAWING NO. D-37010-206-606-0700

LAYOUT N/A SCALE NTS PATTERN # 7119

DRAWN BY: C. Kuehl DATE 03/19/2015

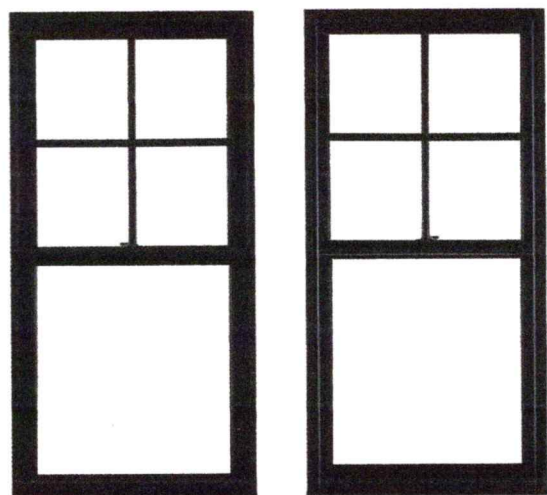
Simpson[®]



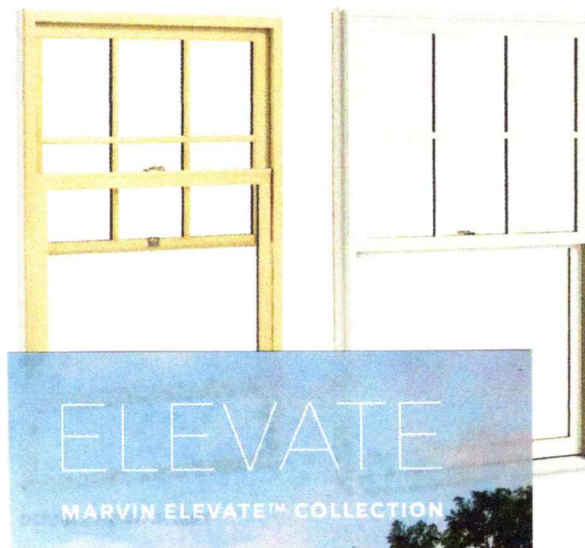
Double Hung windows with Window Opening Control Devices

DOUBLE HUNG

- Equipped with a standard full screen; optional half screen is available.
- Tilt latches are ergonomically designed and easy to operate making tilting and cleaning effortless.
- Sash lock provides a positive detent, reassuring user that the window is either locked or unlocked.
- Up to PG50 performance rating.
- Equal, Cottage, and Reverse Cottage sash provide a variety of looks and checkrail heights.
- Available in standard and special sizes up to 4 feet 6 inches wide by 7 feet high.
- Coordinating Picture and Transom windows also available.
- Double Hung Insert option features $\frac{3}{4}$ inch insert replacement frame with through jamb installation and up to PG40 performance rating.



DOUBLE HUNG



ELEVATE
MARVIN ELEVATE™ COLLECTION



Available with IZ3
(Excludes Insert option)