



12/10/19

Vince Lombardi, Chairman  
Historic District Commission  
City of Portsmouth, NH

Re Lot 2, 55 Lafayette Road

Attachments:  
Plans dated 12/10/19  
Specifications Dated 12/10/19  
Elevations and Locations Plan 39-55 Lafayette Road  
Elevations and Locations Plan 145-169 Lafayette Road  
Submittals for Materials and Colors

Dear Commissioners,

Attached is our revised application for the new home proposed for this location.

The Elevations and Location plans show the neighboring homes and our proposed home. These do make it much more possible to see the as-built streetscape. The elevations and locations of 39-91 are accurate since the survey and subdivision plan data is available. The elevations of 145-169 are also based on the survey data, the locations are from the tax map.

Two front elevations are offered. Plan 2A and Plan 2C. Both incorporate 6 over 1 window grilles, a colonial wood entrance, a revised garage door, and a combination frieze board/top window casing under the eaves. The second-floor window bump-out has been deleted for simplicity. Plan 2A keeps the mulled windows. Plan 2C separates the windows. Our first choice is 2A.

Thank you for your consideration and suggestions on this project.

Sincerely,

Joe Caldarola  
President



**Exterior Specifications**  
**Lot 2, 55 Lafayette Road, Portsmouth, NH**  
12-10-2019

**The following Specifications are submitted for Approval.**  
**Reference Plan Set dated 12/10/19**

**1. Siding:**

Hardie Lap Siding, Smooth, 4" exposure.  
Color "A": Prefinished in Aged Pewter  
Color "B": Field Painted Ben Moore Kendall Charcoal HC 166  
See Elevations for locations

**2. Windows:**

**Sanford Hills.** Historically accurate vinyl windows by Mathews Brothers. SDL putty profile grilles, black painted exterior sash and grille, white frame, full screens. See Window and Door Schedule in the plan set for sizes and grille patterns.

**3. Window Casing:**

1x5 Klear PVC, screws and plugs, applied on 1x4 PT to create siding rabbit.  
Klear 7435 Historic Sill

**4. Frieze & 2<sup>nd</sup> Floor Head Casing:**

1x8 Klear PVC, screws and plugs

**5. Window Crown:**

3 5/8 Crown in Klear PVC

**6. Front Door Trim:**

1 x 10 on 1x12 Pine side casings.

**7. Corners:**

8" rabbited corners, premade in PVC, Azek or equal, applied with screws and plugs  
6" rabbited corners on dormers and garage

**8. Mudsill:**

1x10 Klear PVC per elevations

**9. Soffit:**

Kleer PVC, ½" x 18' panels

**10. Fascia**

Kleer PVC 1x6 and 1x3

**11. Roofing**

IKO Cambridge Architectural Shingles in Dual Black

**12. Front Door:**

Front Door: Fir 4-panel door, #2210, finished with clear poly on fir toner

**13. Storm Door (Optional)**

If a storm door is installed, wood Ultra View finished with clear poly on fir toner

**14. Walk Out Basement Door:**

Walkout Door: Insulated Steel 4 panel door, painted to match siding

**15. Garage Door**

Door: Amarr Carraige Court Overlay Door with grilles as shown on Front Elevation  
Trim: 1x6 Kleer PVC, screws and plugs, on 1x4 PT Spacers

**16. Patio Door**

Kasson and Keller/or Mathews Brothers 9' vinyl slider, black exterior, .28 glass.

**17. Porch Landing and Steps**

Risers: 1x8 Kleer PVC

Treads: Aeratis T&G composite porch flooring, 3 ¼ " coverage, field painted.

Railings: None

**18. Front Porch Columns and Trim**

Colonial Entrance in wood per front elevation. Columns are 11" square

**19. Rear Deck and Steps**

1x8 Azek Deck Wrap and Risers

Decking: Azek Select Pebble Grey

Railings: Expanse Select white PVC railing and balusters. 4x4 post wraps and caps

**17: Walk and Landscape Steps**

Techo Block Blu 80 6 ½ x 13 in Shale Grey, or equal

Steps: Granite Steps

**18. Front Planter**

Cambridge Amortec Matrix wall stone, Bluestone Blend or native stone equal.

**19. AC Condenser**

Type and location: Work YCD mounted on pad on ground

**20. Vents**

For bath fans, range vent, gas furnace, and fireplace, as drawn

**22. Fence**

4' Cedar picket fence

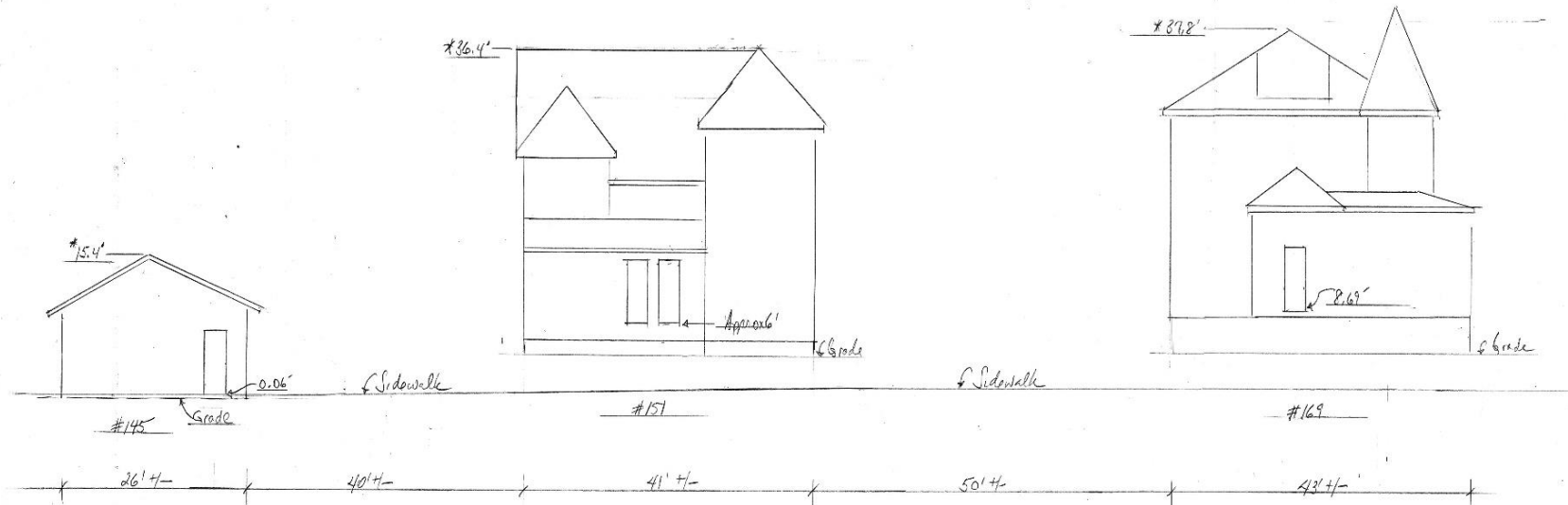
**23. Light Fixtures**

A and B fixtures per submittals



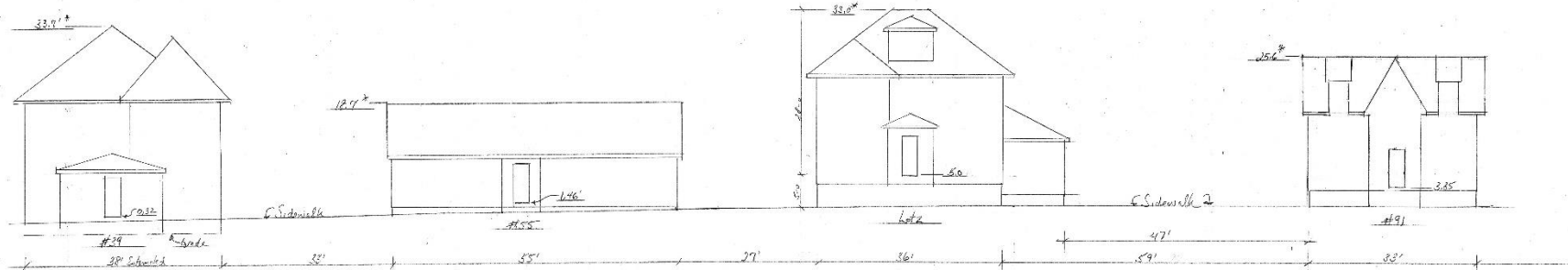
Notes

- \*Building Ridge Height Above Sidewalk Per TF Moran Survey
- First Floor Elevation Above Sidewalk per TF Moran Survey
- Sidewalk Elevations are per TF Moran Survey
- Building Locations are per Tax Map 151
- All other architectural details were not surveyed and are approximated



145-169 Lakeside Rd		APPROVED BY:	DRAWN BY:
SCALE: 1/8" = 1'			
DATE: 12/6/11		REVIS	
Sawfield Construction			DRAWING NUMBER:
Elevations + Locations			

Notes  
 \*Building Ridge Height Above Sidewalk Per TF Moran Survey  
 First Floor Elevation Above Sidewalk per TF Moran Survey  
 Sidewalk Elevations are per TF Moran Survey  
 Building Locations are per Subdivision Plan and Lot 2 Site Plan  
 All other architectural details were not surveyed and are approximate



39-31 Lakewood Blvd		DATE	12/15/19
SCALE	1/8" = 1'-0"	DRAWN BY	
DATE	12/15/19	REVISION	
S. A. Hill Construction		DATE	
Plumbing & Gas		DATE	

Lot 2 55 Lafayette Road, Lot 2											
Date 12-10-19											
Code	RO	Quantity	Type	Frame	Series	Glass	Grille	Casing	Hist Sill	Stud Pocket	Hdr Height
A		2	Oriel DH Twin	61.5 x 70		Low E	six over one Match top sash size to I	Field 1 x 5 Azek	Kleer 7435	Yes	83
B		1	Egress Casement	30 x 60			six over one, faux mullion	Field 1x5 Azek	Kleer 7435		83
C		2	DH	30 x 60			six over one	"	"		83
E		1	DH	26 x 42			six over one	"	"		83
F		1	Triple Awning	83.5 x 41		Low E	six over one	Field 1 x 5 Azek	Kleer 7435	Yes	83
G		1	DH	26 x 45		Plain Insul	six over one	Field 1 x 5 Azek	Kleer 7435		78
I		2	DH Twin	61.5 x 60		Low E	six over one	Field 1 x 5 Azek	Kleer 7435	Yes	85
J		1	DH	30 x 54		Low E	six over one	Field 1 x 5 Azek	Kleer 7435		85
L		2	DH	30 x 52		Low E	six over one	Field 1 x 5 Azek	Kleer 7435		85
N		3	Egress Casement	30 x 60		Low E	six over one, faux mullion	Field 1 x 5 Azek	Kleer 7435		85
P		1	Twin Egress Casement	61.5x 46		Low E	six over one, faux mullion	Field 1 x 4 Azek	Kleer 7435	Yes	see elevation
R		1	Twin DH	61.5 x 46		Low E	six over one	Field 1x4 Azek	Kleer 7435	Yes	see elevation
S		1	Twin DH	72 x 54		Low E	six over one	Field 1x5 Azek	kleer 7435	Yes	83
T		1	DH	26 x 44 Tempered		Low E	six over one Tempered	"	"		85
V	Alternate C Elevation	4	DH	30 x 60			six over one	"	"		85
3		1	Sliding Patio Door	108 x 80		Low E	None	Field 1 x 4 Azek			

Lot 2 55 Lafayette Rd		
SCALE: NA	APPROVED BY: <i>[Signature]</i>	DRAWN BY
DATE: 12/10/19		REVISED 12/10
Smithfield Construction		DRAWING NUMBER
Window + Door Schedule		10

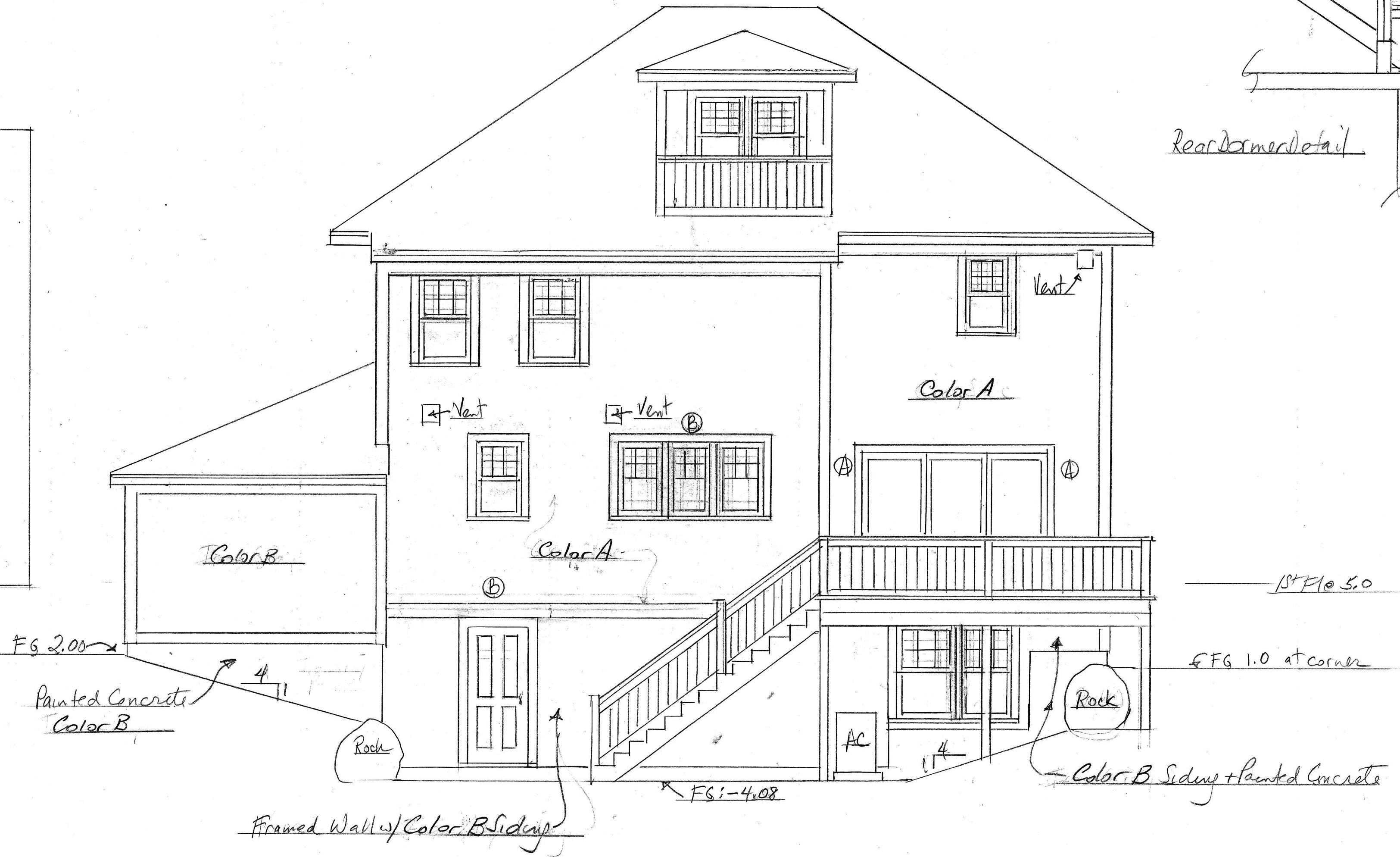
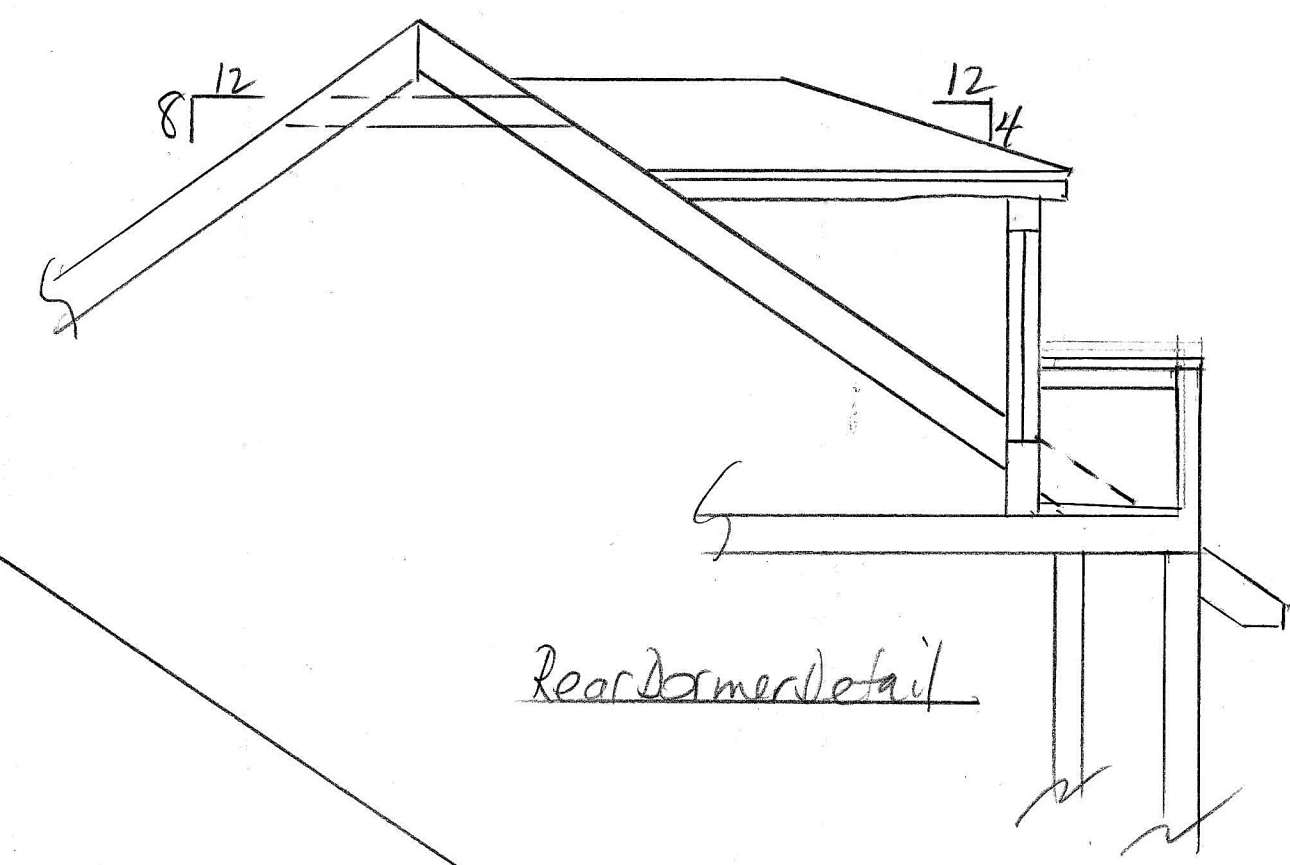
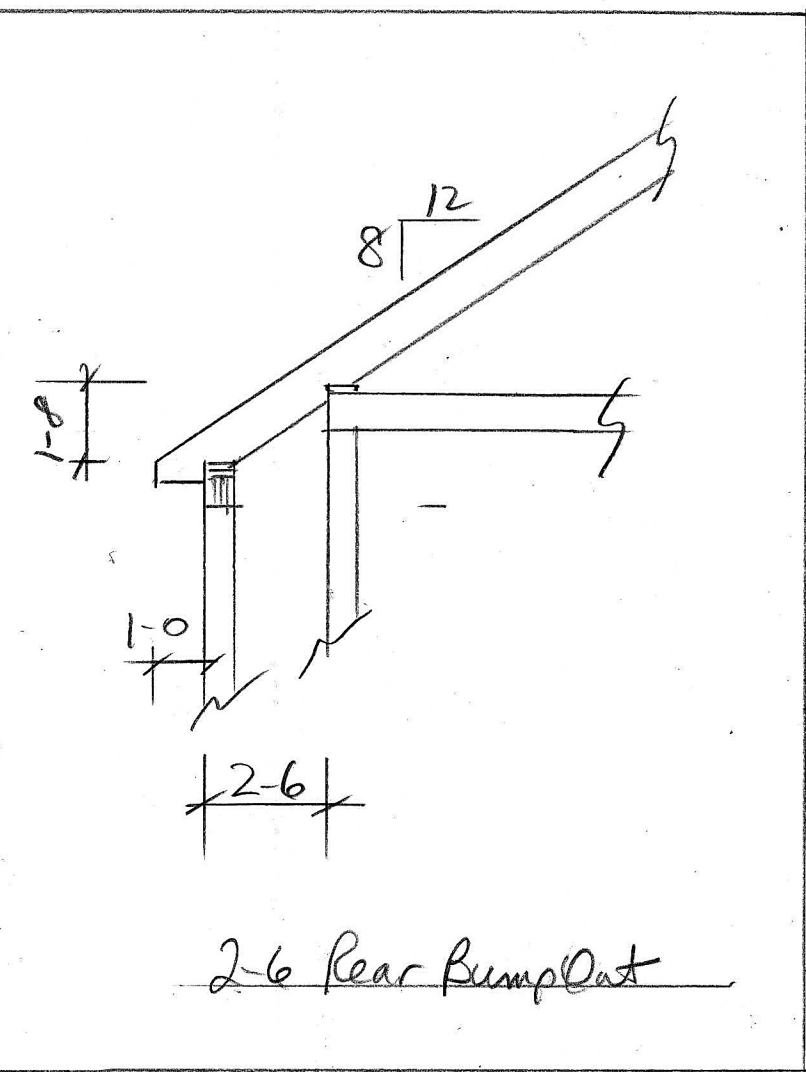




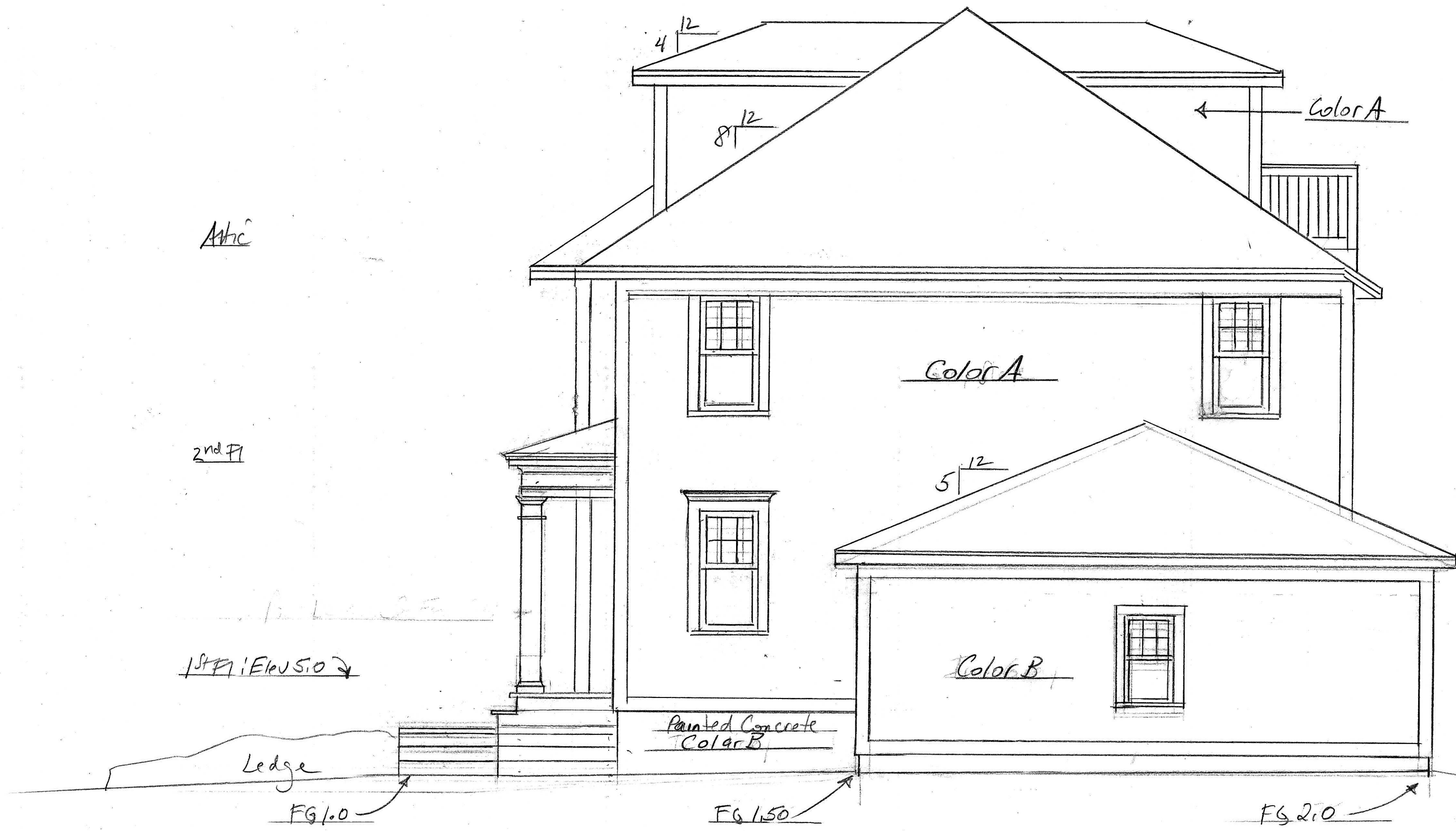
Lot 2 55 Lafayette Road		
SCALE: 1/4"	APPROVED BY:	DRAWN BY:
DATE: 12/10/19		REVISED 12/10
Smithfield Construction		DRAWING NUMBER
Front Elevation		2A



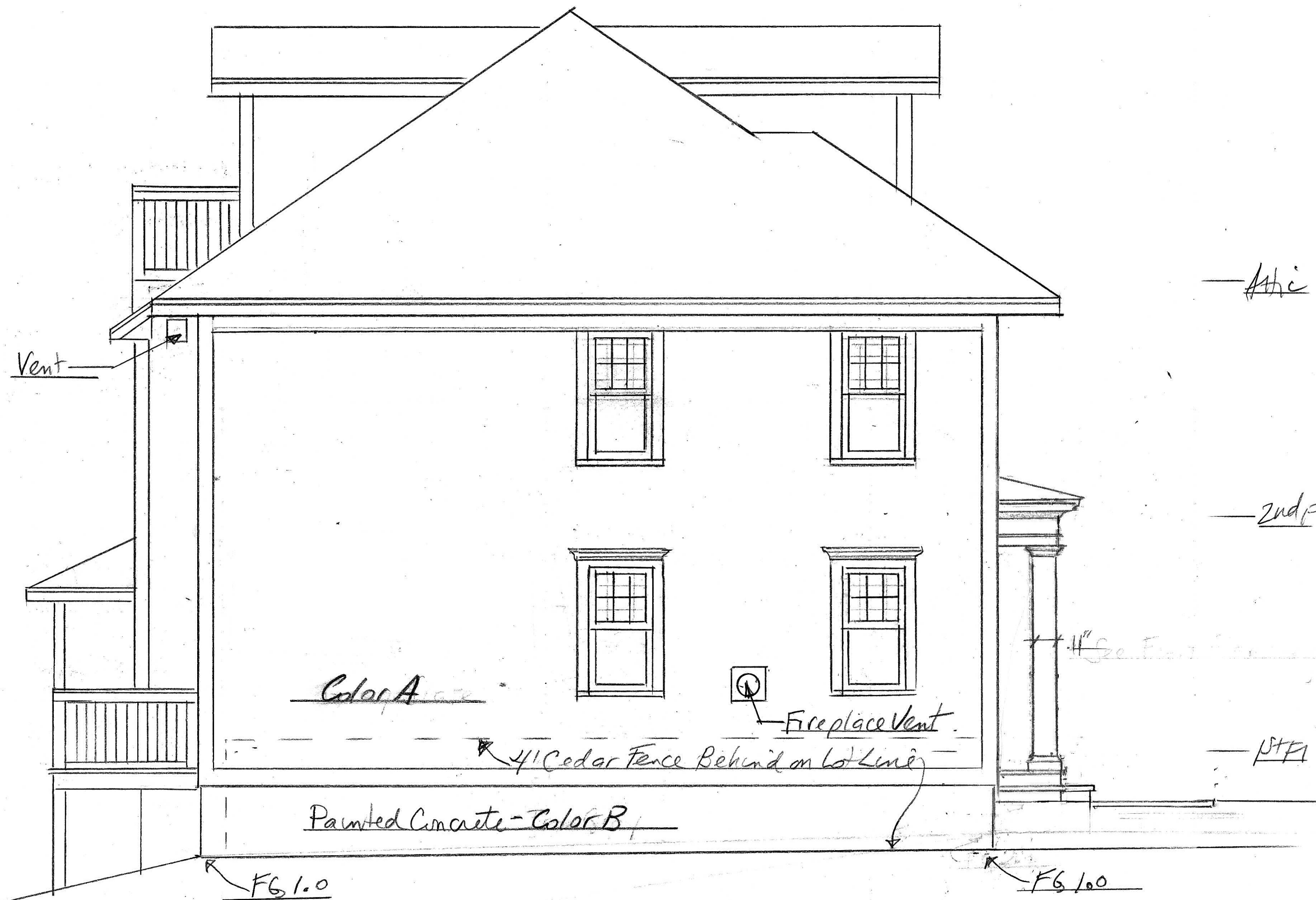
Lot 2 55 Lafayette Rd		
SCALE: 1/4"	APPROVED BY:	DRAWN BY:
DATE: 12/10/19		REVISED 12/10
Smithfield Construction		
Front Elevation Option C		DRAWING NUMBER 2C



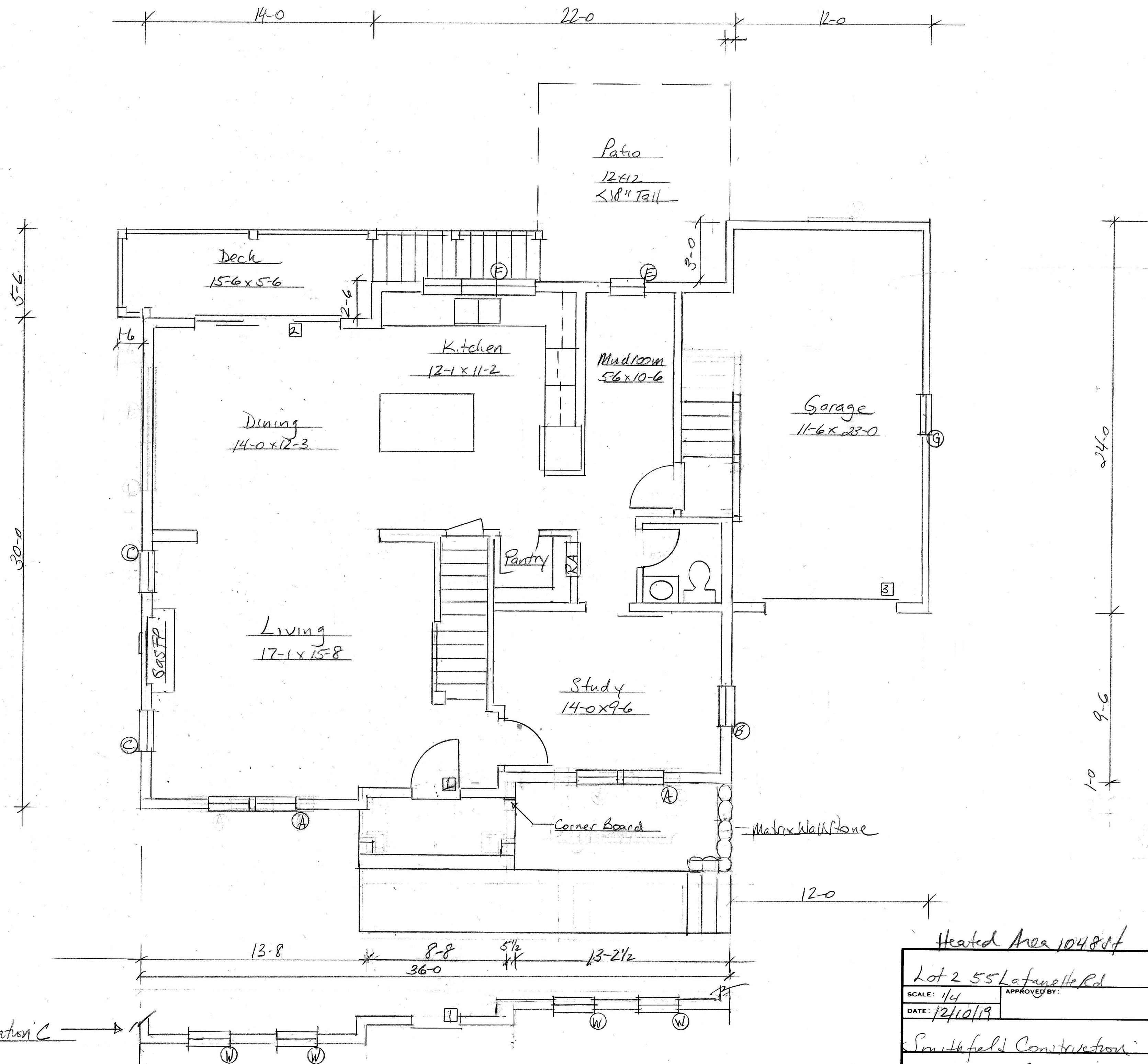
Lot 2 55 Lafayette Rd		
SCALE: 1/4"	APPROVED BY:	DRAWN BY:
DATE: 12/10/1997		REVISED 12/10
Smithfield Construction		DRAWING NUMBER
Rear Elevation		3



Lot 2 55 Lafayette Rd		
SCALE: 1/4"	APPROVED BY:	DRAWN BY
DATE: 12/10/19		REVISED 12/10
Smithfield Construction		DRAWING NUMBER
Right Side Elevation		4

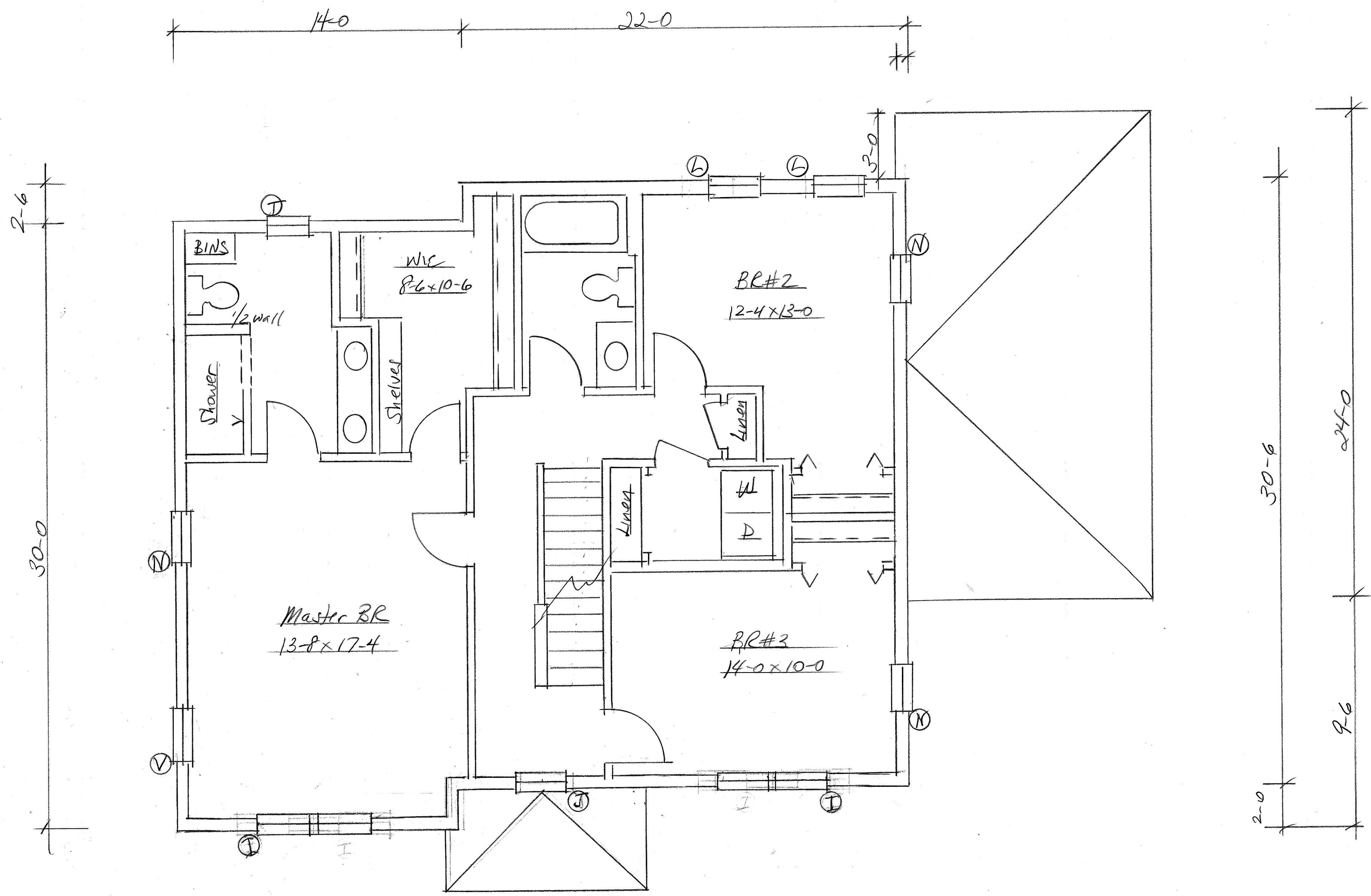


Lot 2 55 Lafayette Rd		
SCALE: 1/4	APPROVED BY:	DRAWN BY
DATE: 12/10/19		REVISED 12/10
Smithfield Construction		DRAWING NUMBER
Left Elevation		5

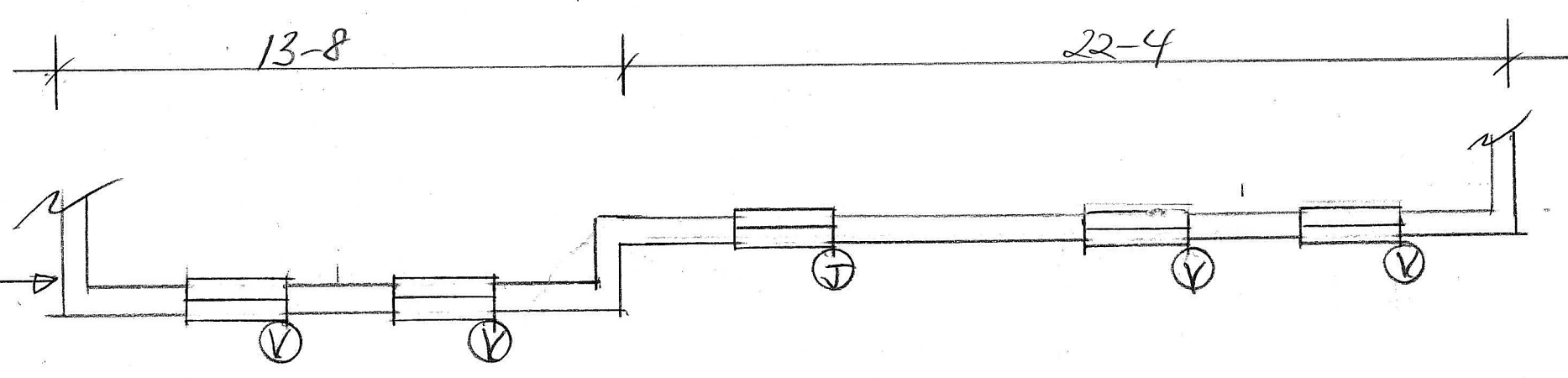


Heated Area 1048sf

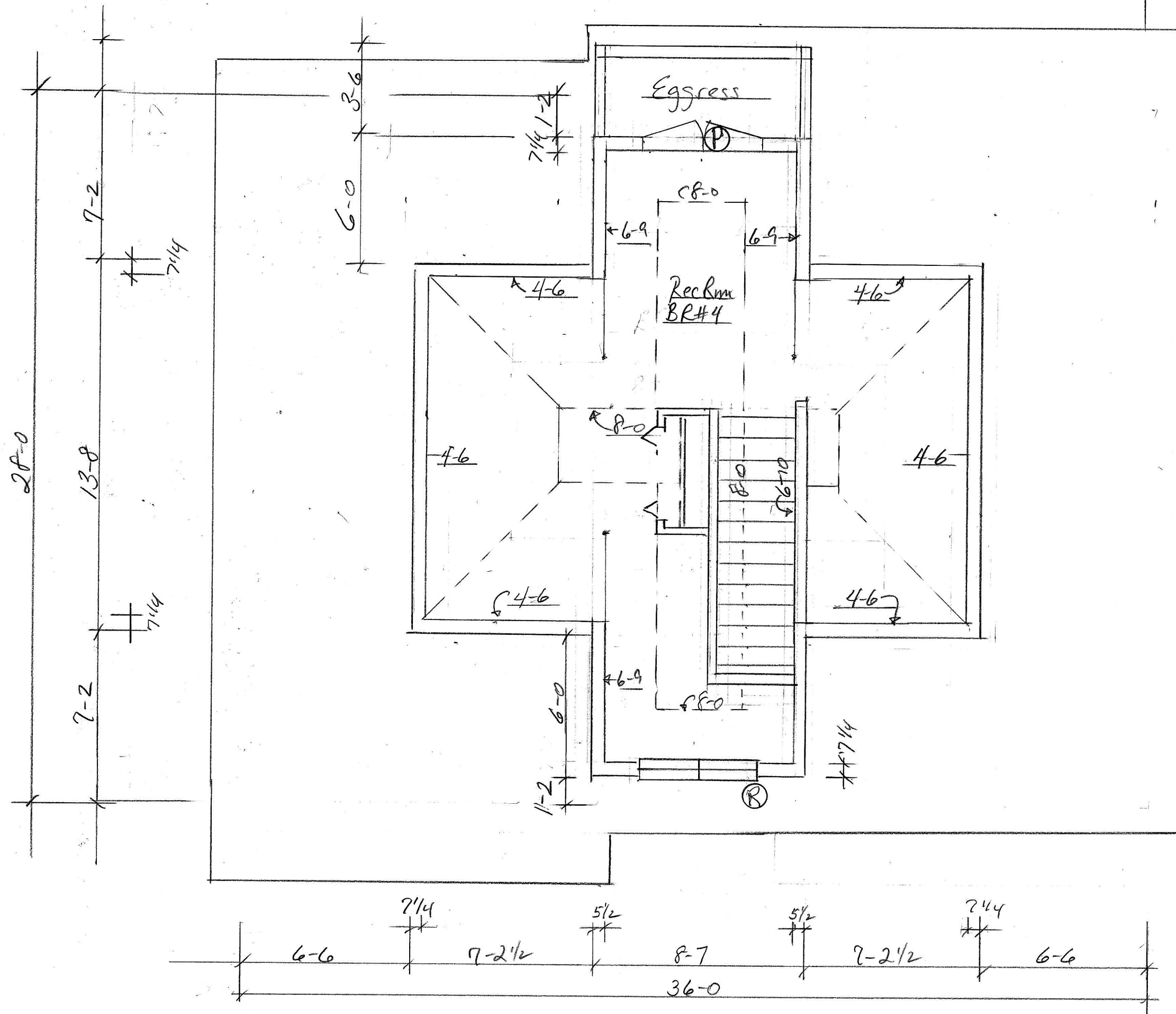
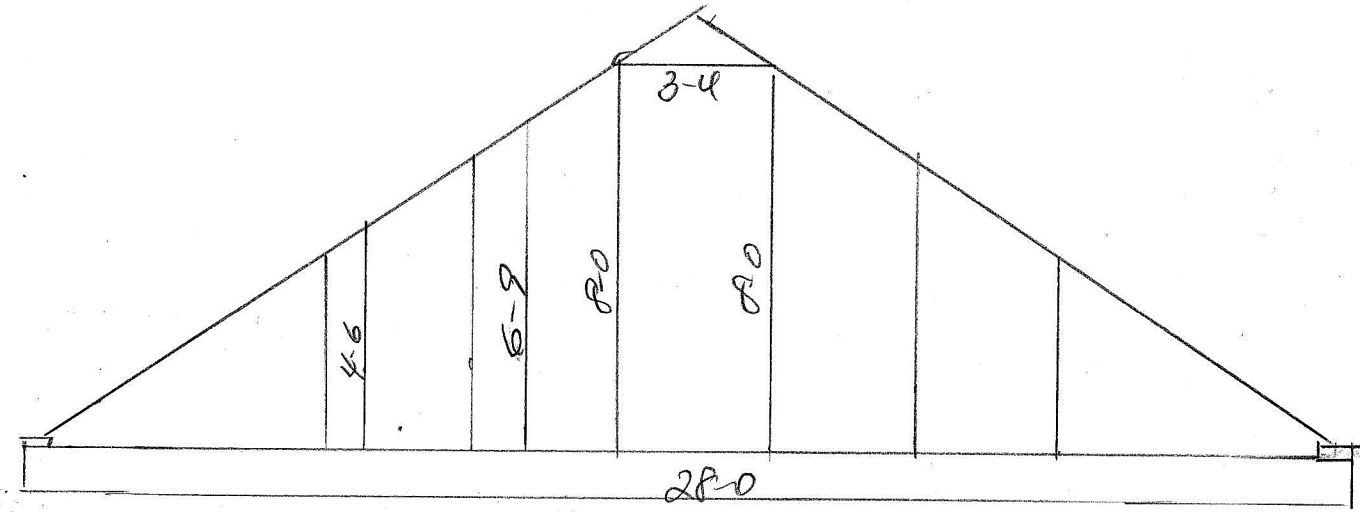
Lot 2 55 Lafayette Rd		DRAWN BY
SCALE: 1/4"	APPROVED BY:	REVISD 12/10
DATE: 12/10/19	DRAWING NUMBER	
Smithfield Construction	6	
First Floor Plan		



Alternate Elevation "C"



Heated Area 1090 Sf		
Lot 2 55 Lafayette Rd		
SCALE: 1/4"	APPROVED BY:	DRAWN BY:
DATE: 12/10/19		REVISED: 12/10
Smithfield Construction		DRAWING NUMBER
Second Floor Plan		?

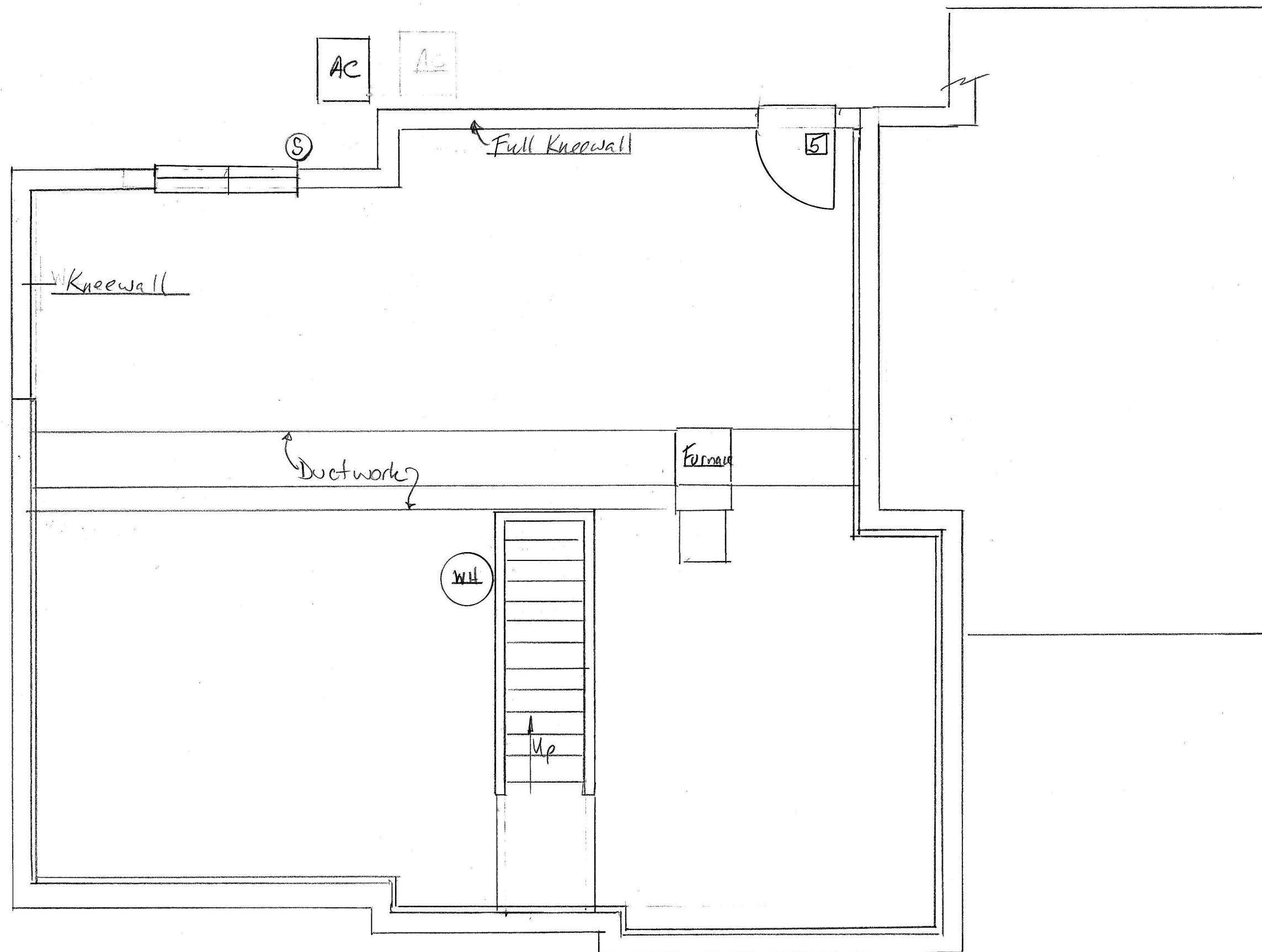


Heated Area 4776 sf

55 Lafayette Rd Lot 2

SCALE: 1/4"	APPROVED BY:	DRAWN BY
DATE: 10/7/19		REVISED
Smithfield Construction		DRAWING NUMBER
Attic Floor Plan		82





55 Lafayette Rd Lot 2		
SCALE: 1/4"	APPROVED BY:	DRAWN BY:
DATE: 10/7/19		REVISED:
Smithfield Construction		DRAWING NUMBER:
Basement Floor Plan		9