



RECEIVED

SEP 16 2019

BY: _____

9/10/19

Vince Lombardi, Chairman
Historic District Commission
City of Portsmouth, NH

Re Lot 2, 55 Lafayette Road

Attachments:
Plans dated 9/10/19
Specifications Dated 9/10/19
Submittals for Materials and Colors

Dear Commissioners,

Attached is our revised application for the new home proposed for this location.

In response to the feedback from the work sessions, I was able to develop and refine plans for an early 20th century-style home that I am hopeful will meet all the various demands on this project. The plans are attached.

Despite the limited building envelope, ledge and challenging grades. I was able to move the front bump out to the left side of the front white remaining within the setbacks. The garage roof has been changed to a hip to further subordinate the garage. The darker color siding is specified for the garage for the same reason. Windows have been added to work toward the greatest possible degree of balance and symmetry on all sides. Window sizes are specified on the Window Schedule Sheet in the Plan Set.

The attached Submittals cover the materials we are requesting to be approved. We have tried to include submittals for all materials and colors to support a thorough review. First choices and second choices are listed for the windows and the fence.

Thank you for your consideration and suggestions on this project.

Sincerely,

A handwritten signature in dark ink, appearing to read "Joe Caldarola", written in a cursive style.

Joe Caldarola
President

Ph. (603)674-5204 PO Box 370 Portsmouth NH 03802 joe@smithfieldconstruction.com



Exterior Specifications
Lot 2, 55 Lafayette Road, Portsmouth, NH
9-10-2019

The following Specifications are submitted for Approval

1. Siding:

Hardie Prefinished Lap Siding, Smooth, 4" exposure.

Lighter Color: Grey Slate; Darker Color: Iron Grey. See Elevations for locations

2. Windows:

First Choice: Sanford Hills. Historically accurate vinyl windows by Mathews Brothers. 5/8 SDL grilles, black painted exterior sash and grille, white frame, full screens

Second Choice: Marvin Integrity fiberglass windows with SDL grilles, black painted exterior sash and grille, white frame, full screens

3. Window Trim:

1x5 Klear PVC, screws and plugs, applied on 1x4 PT to create siding rabbit.
Klear 7435 Historic Sill

4. Front Door Trim:

5/4x8 Primed Pine, rabbited for siding

5. Corners:

8" rabbited corners, premade in PVC, Azek or equal, applied with screws and plugs

6" rabbited corners on dormers and garage

6. Mudsill:

1x8 Klear PVC per elevations

7. Freeze

1x4 Klear PVC

8. Soffit:

Klear PVC, 1/2" x 18' panels

9. Fascia

Kleer PVC 1x6 and 1x3

10. Roofing

IKO Cambridge Architectural Shingles in Dual Black

11. Front and walk-out Doors:

Front Door: Shaker style fiberglass door with applied SDL grilles as drawn.

Walk out Door: Insulated Steel 6 panel door

12. Garage Door

Door: Amarr Carraige Court Overlay Door with grilles as shown

Trim: 1x6 Kleer PVC, screws and plugs, on 1x4 PT Spacers

13. Patio Door

Kasson and Keller 9' vinyl slider, black exterior, .28 glass.

14. Porch Landing and Steps

Risers: 1x8 Kleer PVC

Treads: Aeratis T&G composite porch flooring, 3 ¼ " coverage, field painted.

Railings: None

15. Columns

Craftsman PVC custom columns as drawn

16. Rear Deck and Steps

1x8 Azek Deck Wrap and Risers

Decking: Azek Select Pebble Grey

Railings: Expanse Select white PVC railing and balusters. 4x4 post wraps and caps

17: Walk and Landscape Steps

Techo Block Blu 80 6 ½ x 13 in Shale Grey, or equal

Steps: Granite Steps

18. Front Planter

Cambridge Amortec Matrix wall stone, Bluestone Blend or equal.

19. AC Condenser

Type and location: Work YCD mounted on pad on ground

20. Vents

For bath fans, range vent, gas furnace, and fireplace, as drawn

21. Rear Retaining Wall

London Boulder retaining wall blocks by Genest Precast, 18 x 48

22. Fence

Located per Site Plan

First Choice: 4' Barrington vinyl picket fence

Second Choice: 4' Cedar picket fence

23. Light Fixtures

A and B fixtures per submittals

Make your next home stand out with our *Statement Collection™* products. Carefully curated by our design experts specifically for your market, the collection brings together the most popular James Hardie ColorPlus® siding and trim styles, textures, and colors. This stunning selection is locally stocked and designed for simplicity - making it easier than ever to get a beautiful, long-lasting home exterior.

Plank, Panel, Shingle and Batten Color Offering



ARCTIC WHITE



COBBLE STONE



NAVAJO BEIGE



KHAKI BROWN



MONTEREY TAUPE



TIMBER BARK



LIGHT MIST



PEARL GRAY



GRAY SLATE



BOOTHBAY BLUE



EVENING BLUE



AGED PEWTER



NIGHT GRAY



IRON GRAY



DEEP OCEAN

Trim Color Offering



ARCTIC WHITE



COBBLE STONE



KHAKI BROWN



MONTEREY TAUPE



TIMBER BARK



IRON GRAY

HardiePlank®

Thickness 5/16 in
Length 12 ft planks



SELECT CEDARMILL® & SMOOTH

Width	5.25 in	6.25 in
Exposure	4 in	5 in
ColorPlus Pcs./Pallet	324	280

HardiePanel®

Thickness 5/16 in



SELECT CEDARMILL® & SMOOTH

Size	4 ft x 10 ft
ColorPlus Pcs./Pallet	50

HardieShingle®

Thickness 1/4 in
Length 48 in



STRAIGHT EDGE PANEL

Height	14 in	15.25 in
Exposure	5 in	7 in
ColorPlus Pcs./Pallet	120	86

HardieTrim®

4/4 SMOOTH



Thickness	.75 in
Length	12 ft boards
Width	3.5 in 5.5 in 7.25 in 11.25 in
ColorPlus Pcs./Pallet	312 208 156 104

5/4 SMOOTH



Thickness	1 in
Length	12 ft boards
Width	3.5 in 4.5 in 5.5 in 7.25 in 11.25 in
ColorPlus Pcs./Pallet	240 200 160 120 80

BATTEN BOARDS

4/4 SMOOTH



Thickness	.75 in
Length	12 ft boards
Width	2.5 in
ColorPlus Pcs./Pallet	190

4/4 RUSTIC GRAIN®



Thickness	.75 in
Length	12 ft boards
Width	2.5 in
ColorPlus Pcs./Pallet	190

Colors shown are as accurate as printing methods will permit. Please see actual product sample for true color.



Selecting a color? Request a product sample at [jameshardiepros.com/samples](https://www.jameshardiepros.com/samples)



SANFORD HILLS

 **MATHEWS
BROTHERS**
AMERICA'S OLDEST WINDOW MANUFACTURER



Sanford Hills Mathews, born in Searsmont, moved to Bangor at the age of 19 to learn the trade of joinery. He joined his family in Belfast in 1854 as he continued to learn his trade. Summers he worked, and winters he taught public school. In 1860, he joined his brothers, and the company was renamed "Mathews Brothers Company".

It is said that in his entire career, which spanned 37 years at Mathews Brothers, he never took a vacation, except to attend his son's graduation from the University of Rochester in 1885.

"His was a life of simplicity, of simple obedience to duty, of earnest toil, and of ready service to those around him."

- Maine Biographies, Harriet B. Coe

A WINDOW 165 YEARS IN THE MAKING

*For 160 years, **Mathews Brothers** produced putty-glazed wood sash. Millions of them, each and every one hand-glazed. So, the look and feel of wood windows is not only in our heritage, it's in our blood.*

Nearly three decades ago, we added PVC windows to our product line, and were among the first wood window manufacturers in the country to do so. Beautiful windows, highly energy-efficient, low-maintenance, worry-free windows. Wicked Awesome Windows we're proud to make, dealers are proud to distribute, builders are proud to install and homeowners are proud to own.

But, still, we missed the look and feel of our wood windows. We missed the aesthetic of beefy sash rails, the texture of historic muntin bars. We wanted the best of both worlds.

So, we made a bold move. We took our collective decades of experience in the builder's world, learning what they want and need, along with our passion for exceeding customer demands, and coupled it with our generations of experience in producing superior quality windows and doors, both efficiently and accurately, and applied it to the design of this product family.

*The result is our **Sanford Hills** family of products. This breakthrough design is unlike any PVC windows you've ever seen, and the performance is decidedly world-class.*



CLASSIC BEAUTY

BREAKTHROUGH DESIGN

INCREDIBLE PERFORMANCE

From every angle, the Sanford Hills looks like a classic New England wood window. Starting with a deep 4⁹/₁₆" Master Frame, the window hosts sash that are a full 1³/₄" thick. Traditional 3¹/₂" Flat Casing, 4¹/₂" Banded Casing, Historic Staff Bead Brickmould, as well as Standard or Historic Sill Nosings are available to complete the exterior.

The window's interior is equally impressive. The deep sash rails can accommodate both Low-Profile as well as Hidden Tilt Latches. Choose extruded White, Adobe or Stain-Grade Wood-Based Laminate. Color-matched Jamb Covers and Historic Putty Muntins all hearken back to our Classic wood designs.

The breakthrough design of the Sanford Hills takes us back to our roots. We emulated the classic ⁵/₈" muntin bars that we moulded for generations. We copied the historically accurate interior putty beads that we hand-applied for a century and a half. At the same time, we allowed the sash to accommodate both ³/₄" Dual-Glazed, and optional 1¹/₈" Triple-Glazed Insulating Glass Units.

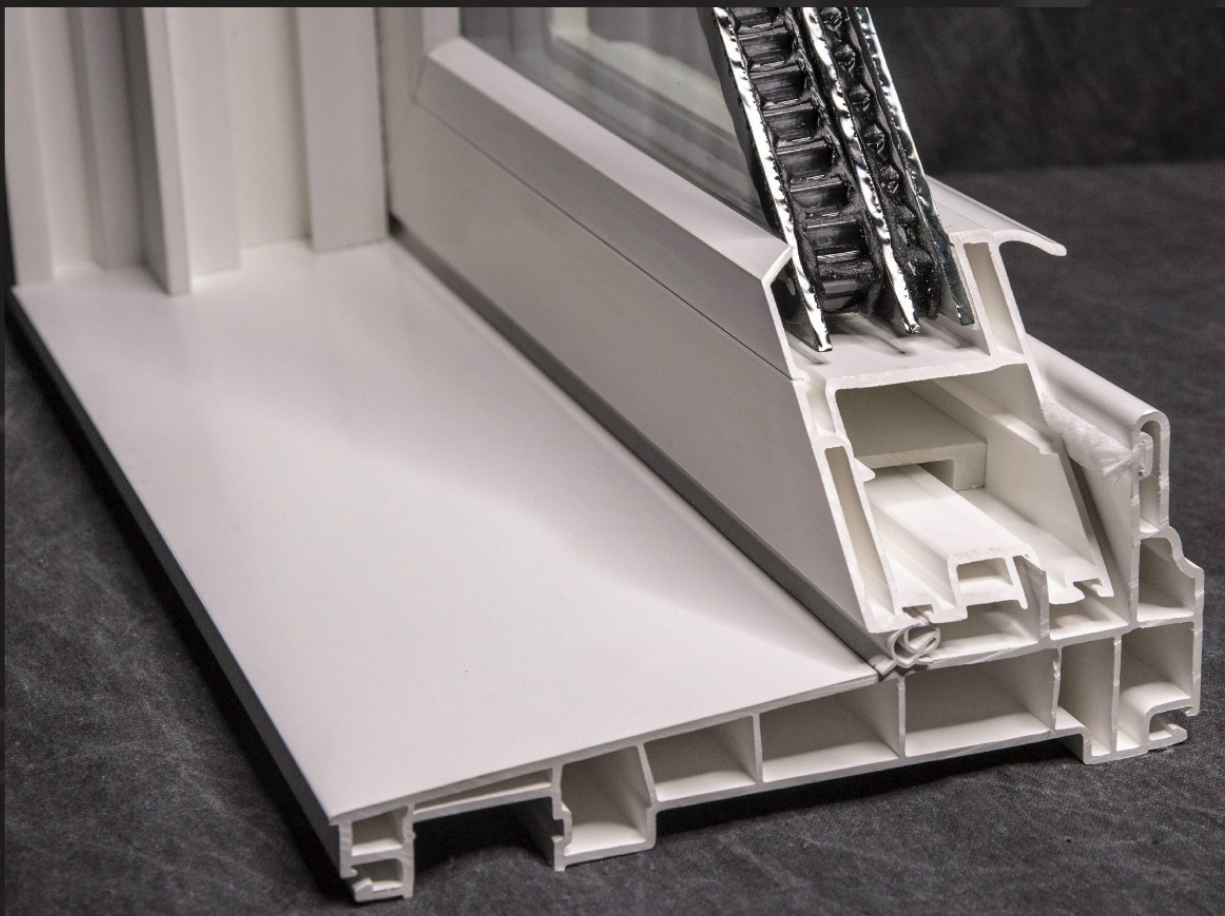
Despite its beauty, the Sanford Hill is incredibly high performing. Performance Grade 50 without any upgrades. Energy Star[®] 6.0 with our standard ³/₄" Low-e/Argon Glazing. Sizes up to 42" x 86" in the Double Hung, and 40" x 84" in the Casement.

After 165 years, the Sanford Hills has redefined what a window can be.

Table of Contents

Sanford Hills Mathews	2-3	Understanding Low-e Glazing	14-15
Double Hung		Standard Sizes / Details	
Features	4-5	Double Hung	16-17
Options	6-7	Picture Window/Transom	18-19
Casement/Awning		Casement	20-21
Features	8-9	Awning	22-23
Options	10-11	Casement Picture Unit	24-25
Window Customization	12-13	Window Performance	26
		Useful Links	26
		Hearts and Hands	27

Double Hung



Double-Hung Windows

Traditional, classic, durable — double-hungs give you all of that plus energy efficiency and peace of mind. Top and bottom sash operate smoothly allowing you to control air flow, and they both tilt-in for easy cleaning and care. Grilles can be added to further enhance the traditional look of your home.

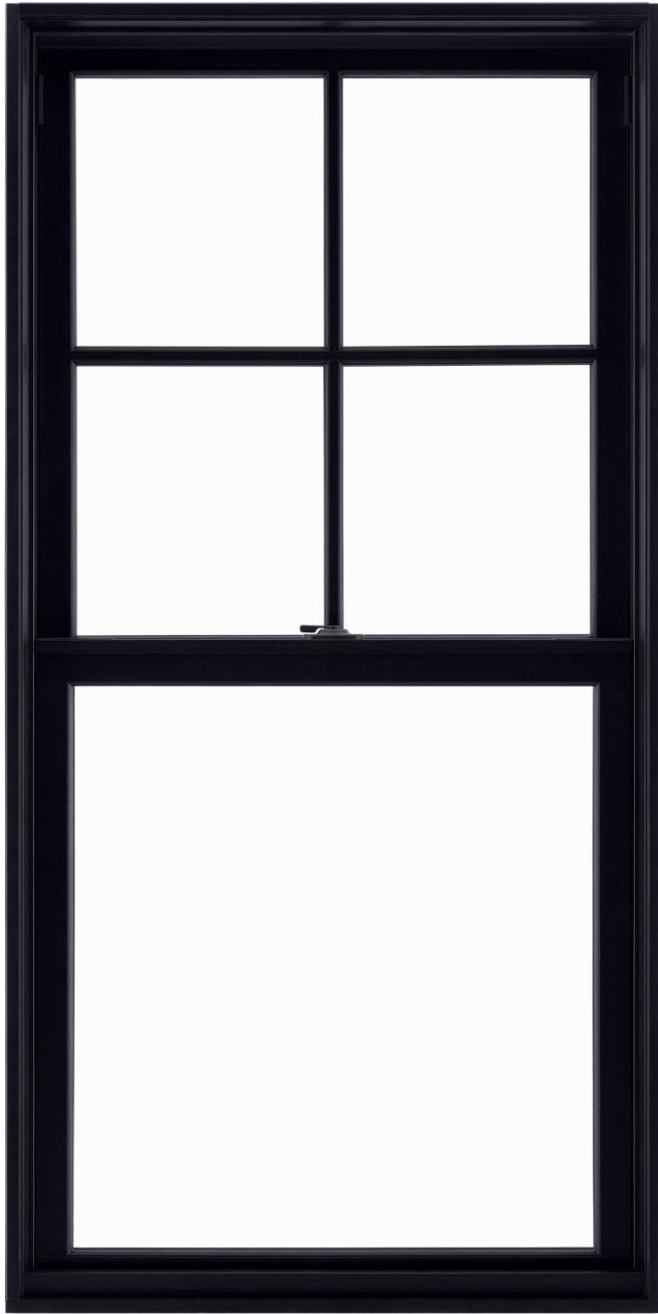
Used singly, or factory mulled with transoms or other fixed or hung units to add a dramatic accent to your home's appearance, while providing a brighter, more open interior.



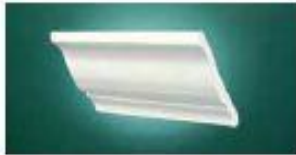


Marvin Integrity DH- Black Exterior Sash and Grille

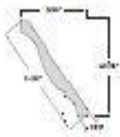
Except Jamb Liners to be black, and trim to be Azek 1x5 with Kleer 7435 Historic Sill



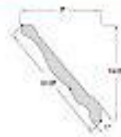
Marvin Integrity Fiberglass Window



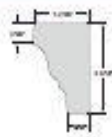
5-1/4\"/>



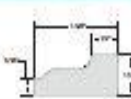
7-1/2\"/>



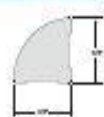
RAM'S CROWN
#5158K
 1-7/16\"/>



SHINGLE MOULD
#5210K
 11/16\"/>



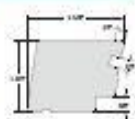
QUARTER ROUND
#5234K
 3/4\"/>



COVE/SCOTIA
#5245K
 3/4\"/>



HISTORICAL SILL #1
#7435K
 1-3/4\"/>



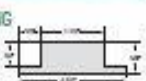
HISTORICAL SILL #2
#7650K
 2\"/>



REPLACEMENT SILL
#960810SILL
 1-1/4\"/>



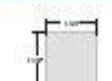
KLEERlok MOULDING
#5803K
 5/8\"/>



WAINSCOT CAP
#5276K
 1-1/8\"/>



BALUSTER PROFILE
#5150K
 1-1/2\"/>



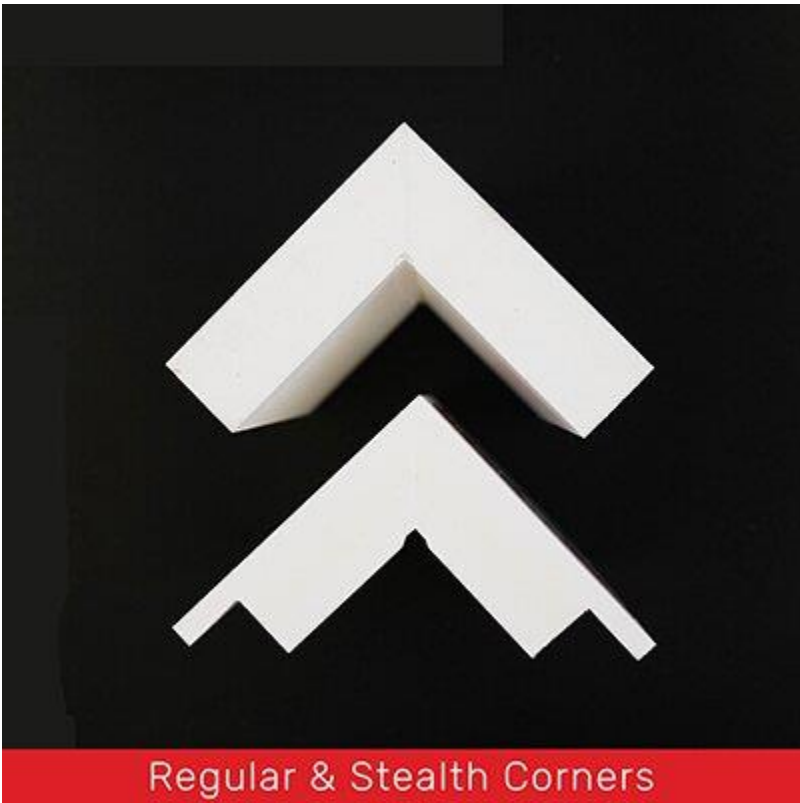
Rabitted Corner Boards

House: 7 ¼”, Garage and Dormers: 5 ½”

VERSATEX Cornerboards

VERSATEX was the first PVC trim company to produce a line of one-piece corners, and we are still the best. Unlike the two-piece cornerboards offered by some competitors, which gather unsightly dirt along the edges, VERSATEX one-piece corners are not only aesthetically superior but easier to install and keep clean. Our cornerboards will look just as attractive ten years from now as they did right after their installation. Plus, our extensive line covers your needs for 12’ and 22’ lengths up to 10” widths.

When it comes to our Stealth Corners, we give you a full 5/4” (1” actual) board with a true 3/4” X 3/4” pocket to neatly accept fiber cement and other lap siding products. Most competitors work off a scant thickness, meaning shallow pockets and/or thin legs that introduce the risk of breakage. When searching for “rabbeted” cornerboards, make sure it’s STEALTH from VERSATEX for a perfect install every time.



5/4 x 6”	1 x 5 1/2”
5/4 x 8”	1 x 7 1/4”

Cambridge IR *with ArmourZone®*



Color Featured: Dual Black

Six stunning, algae-resistant color blends.

Each with matching accessories,
to complement any style of home,
enhance its curb appeal and potentially
boost its resale value.



DUAL BLACK

DUAL GREY



BEAUTY YOU CAN SEE

Your home reflects your lifestyle and expresses your personality.

Your roof may account for up to 40 percent of the visual surface area of your home's exterior. Just as upscale countertops can transform your kitchen, so too can IKO Cambridge architectural laminated shingles elevate your home from bland to grand.

IKO Cambridge shingles are cut from a different cloth than the three-tab shingles that were probably in vogue when your roof

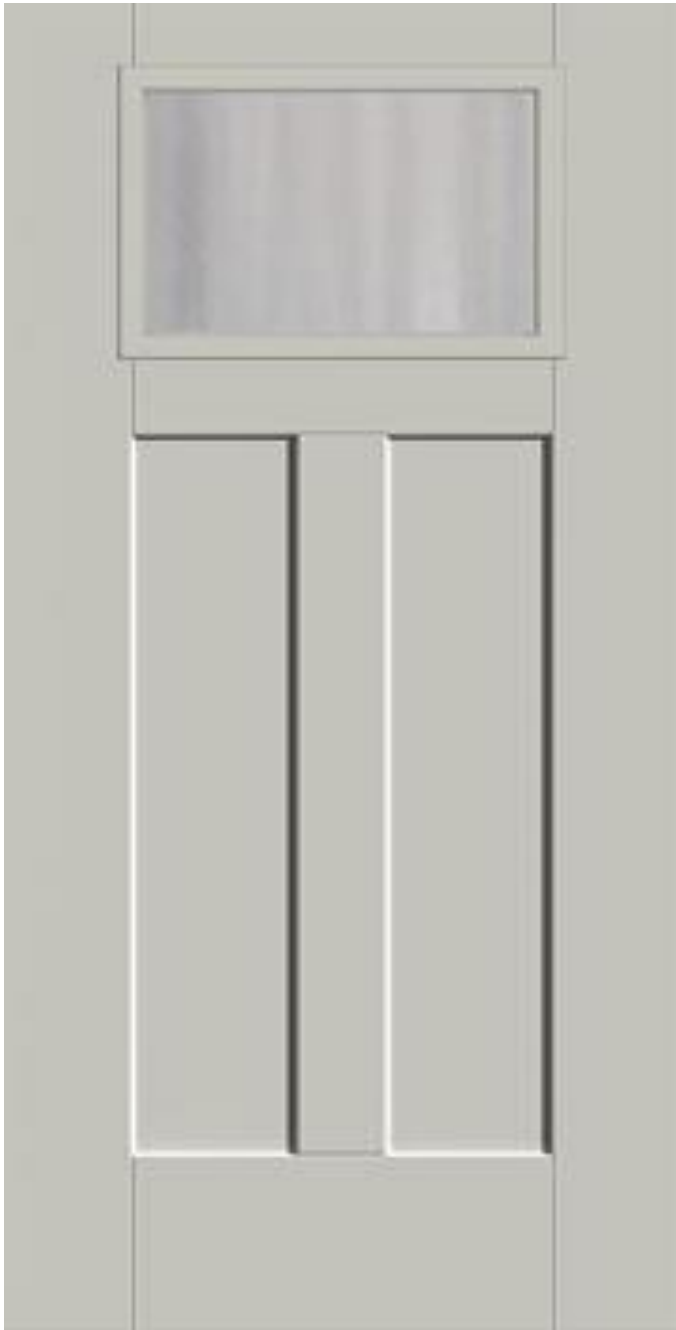
was initially shingled. Their modern, laminated two-piece design provides a lot more depth, dimension and variation to complete the look. IKO Cambridge shingles are manufactured to have "dragon's teeth." By staggering their size and position, we create a random, varied pattern that emulates the rich texture of wood shakes. Deep shadow bands add eye-popping contrast.

Your biggest challenge?

Choosing the right color from among the palette of spectacular color blends we offer.



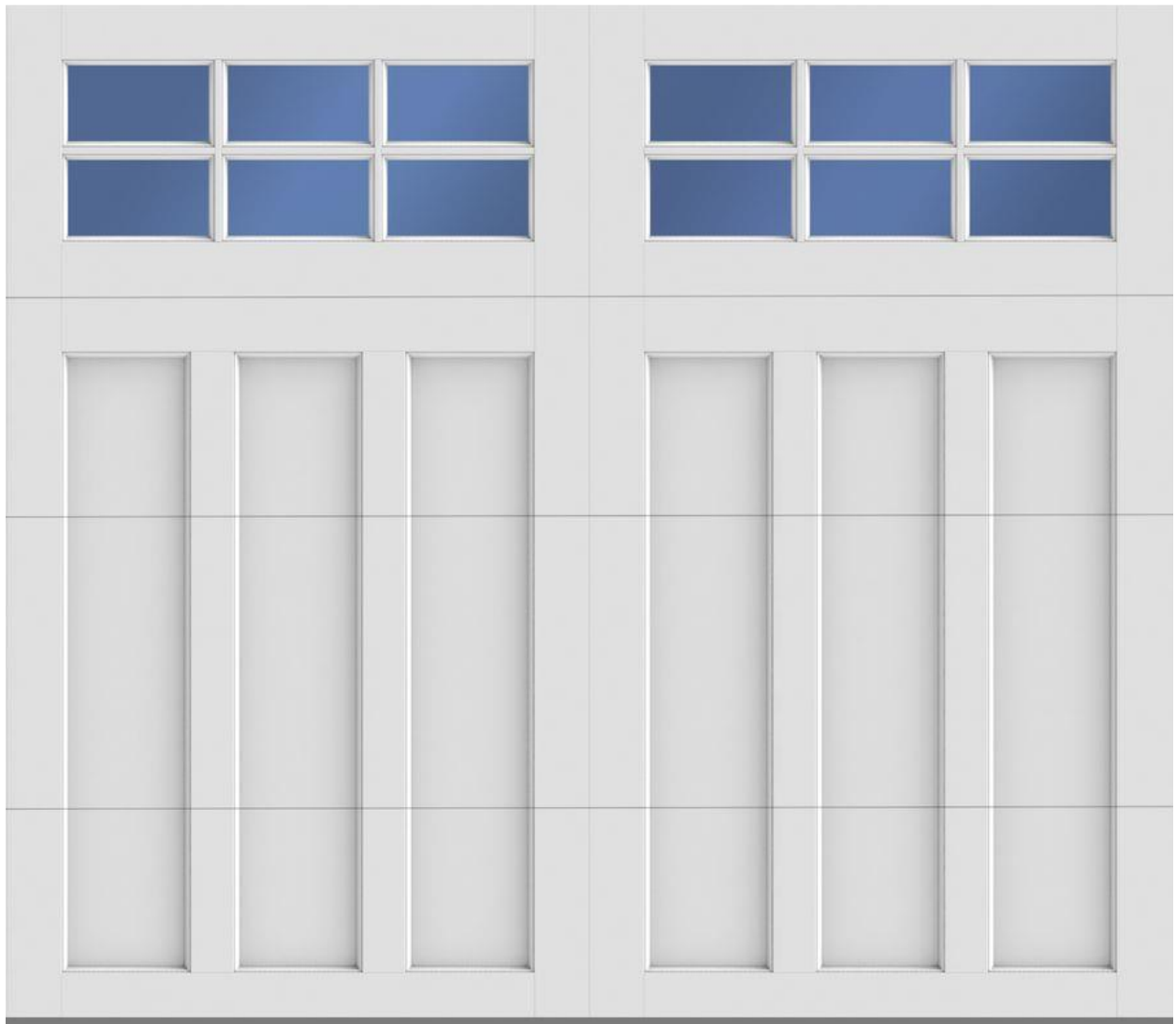
Can't decide on a shingle color? IKO RoofViewer® to the rescue! Our exclusive interactive shingle selector software tool lets you mix'n'match our shingles based on home style, color of siding and other accessories. Or upload a photo of your actual home. Download at IKO.COM or get our free app at Google Play or iTunes. *See details on back cover.



Front Door:

Smooth star craftsman fiberglass entrance door

Prairie SDL grilles to be applied by the distributor, Color to be SW Antique Red



Amar Carriage Court Garage Door



MASTerview WINDOWS



3200 PATIO DOOR

HIGH PERFORMANCE, LOW MAINTENANCE.

A Natural Fit.



The MasterView 3200 is one of the best built, best performing patio doors available at any price. It's reinforced at key points with heavy-duty aluminum, for a lifetime of trouble-free operation.

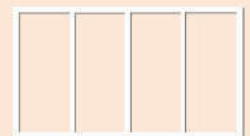
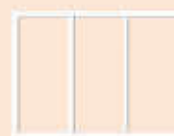
Standard Features

- Sill engineered for excellent drainage
- Integral nail fin and screen track
- Aluminum screen frame with fiberglass mesh screening
- One rolling and one stationary panel
- Interlocking meeting rail
- Adjustable steel rollers
- Dual point locking hardware

Performance Options

- Energy Star Rated glazing package
- 5, 6, 8 foot 2-lite styles
- 9, 12 foot 3-lite styles
- 12 foot 4-lite styles
- Field-applied, pre-cut J-channel
- Field-applied, pre-cut extension jamb
- 4 9/16" or 6 9/16" pre-primed or clear extension jamb
- Profile Grid Package
- Multiple Colors Available

3200 Patio Door



Builder Report



BILL TO:

SHIP TO:

QUOTE #	QUOTE DATE	BID BY	ORDER PLACED BY	ORDER TAKEN BY
387342	Quote Not Ordered			slanctot
JOB NAME		CUSTOMER PO#	TERMS	CARRIER

LINE #	DESCRIPTION	QUANTITY	ROOM / COMMENT
--------	-------------	----------	----------------

100-1 * Product * Patio Doors, Triple Sliding Door, OXO - Fixed / 1
Left / Fixed

* Call Size * 9-0 X 6-8

* Overall Manufactured Size * 106 5/8 X 79 1/2

* Overall Rough Opening * 108 X 80

* Interior / Exterior * Frame Color: White

* Glass Options * Low E w/ Argon, Tempered: Yes

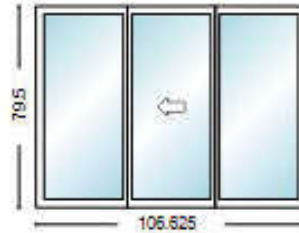
* Screen * Screen Shipped Separate

* Hardware * Lock Option: Dual-Point

* Ratings * Energy Star, U-Factor: 0.28, SHGC: 0.29, Left

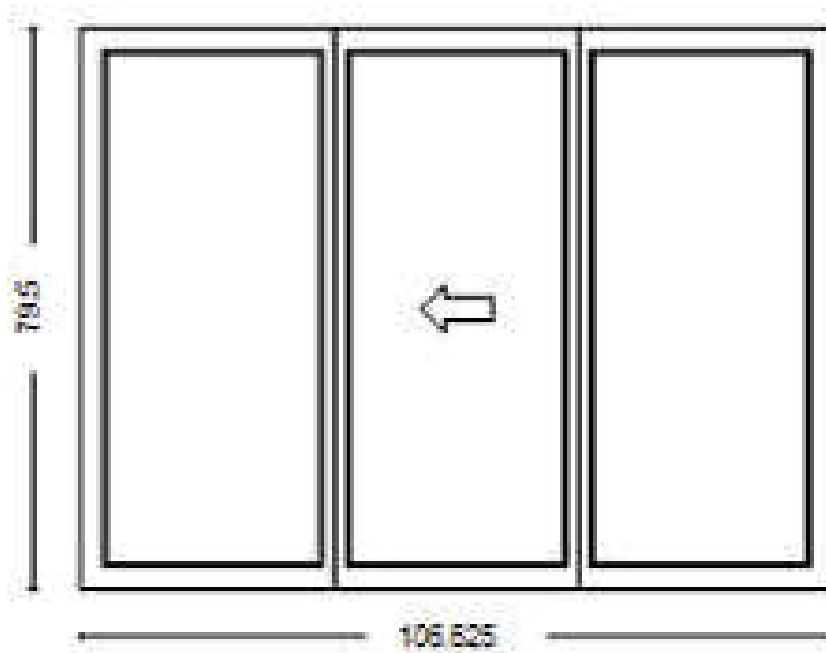
DO: 30 3/16 X 72 3/16, Center DO: 30 3/16 X 72 3/16,

Right DO: 30 3/16 X 72 3/16



VIED FROM EXTERIOR

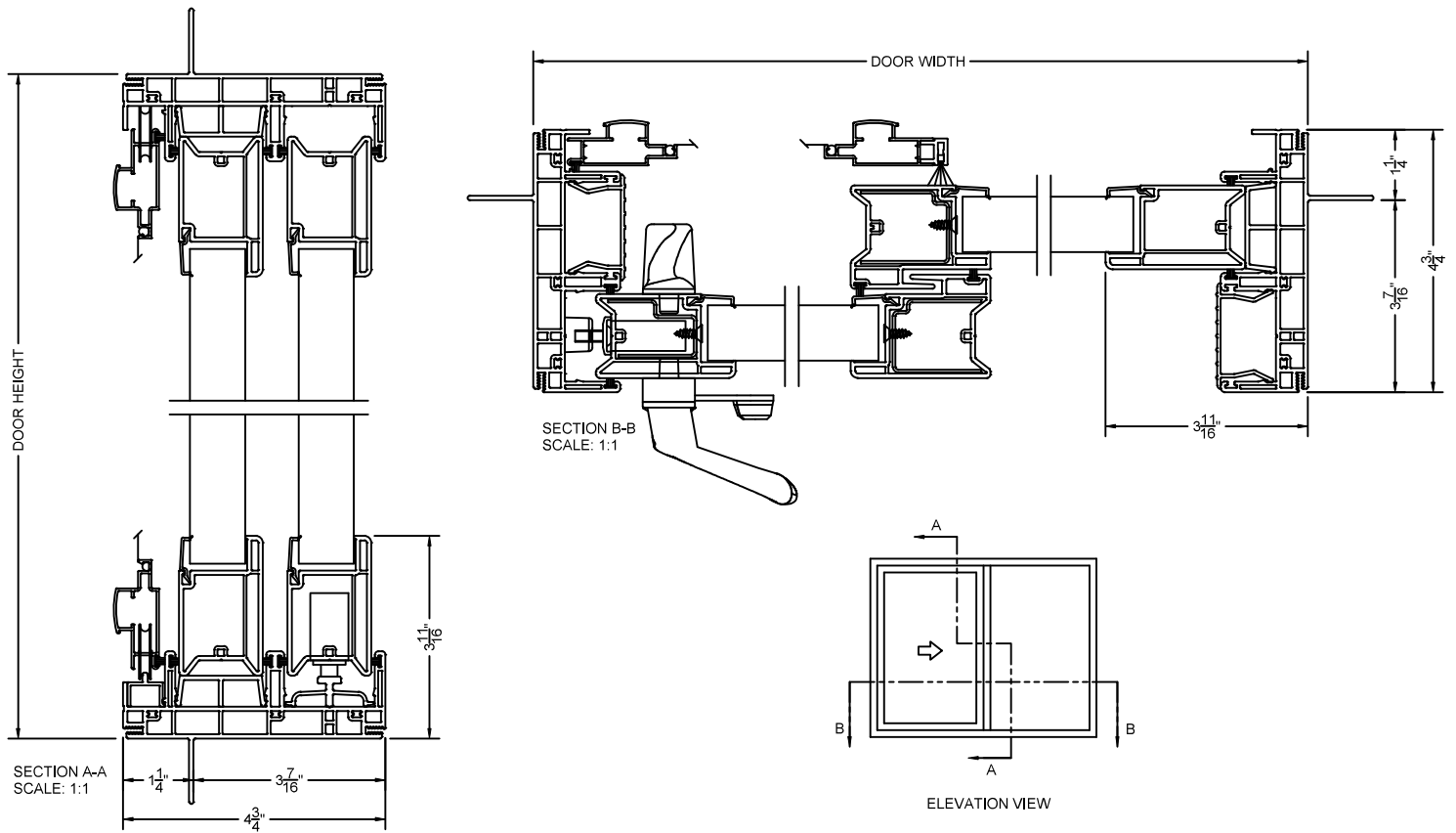
PROJECT		QUOTE
SMITHFIELD CONST.		Smithfield Patio Door
Comments:		
Disclaimer:		



NOTE: Sizes shown are Frame Size tip to tip

KASSON & KELLER INC.
SERIES 3200 NEW CONSTRUCTION PATIO DOOR
CROSS-SECTION

05-04-11



COPYRIGHT 2011
 THIS DRAWING AND ITS CONTENTS ARE
 THE SOLE PROPERTY OF
 KASSON & KELLER, INC.
 ANY UNAUTHORIZED USE OR
 REPRODUCTION IS STRICTLY PROHIBITED.



**MASTerview
 WINDOWS**

BY KAS KEL

SHEET:
 1
 OF
 1

DRAWN BY:
 JPP

DRAWING #
 3200 SERIES PATIO DOOR



Front Porch Flooring

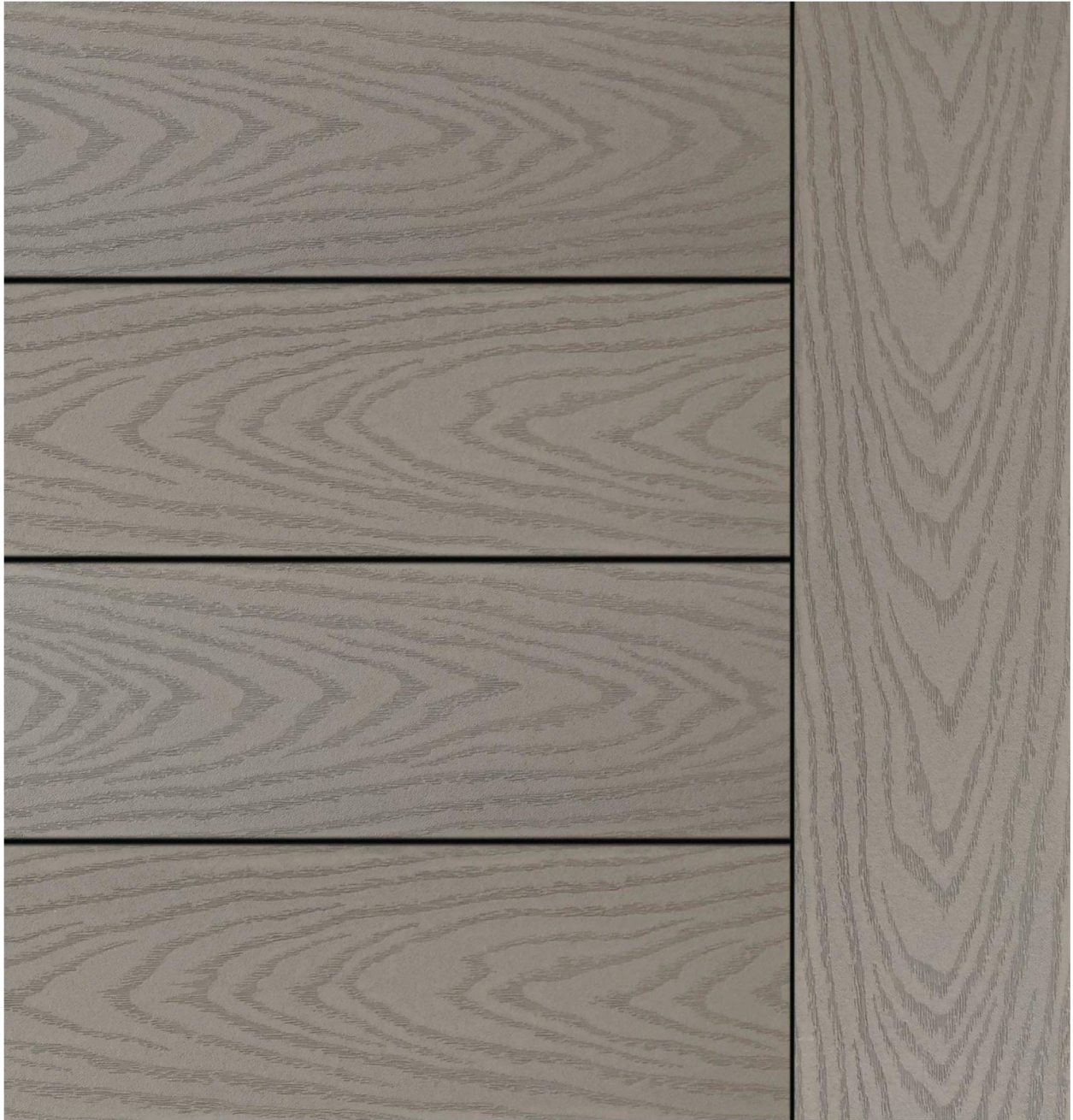
Aeratis Porch Flooring- Paintable



Front Walk

Technobloc Blue 80 Slate- Color Shale Grey

6.5 x 13 in Running Bond Pattern



Rear Deck and Steps

Trex Select Pebble Grey

The Durable Value



SELECT SERIES 15



Select Series Railing

Want a quality, low-maintenance solution that works with the most stringent budget? Our Select Rail is a great, easy-to-install option that provides long-lasting value, performance, and aesthetics.

FEATURES + BENEFITS



Reinforced aluminum core



ICC code approved



Transferable Limited
Lifetime Warranty



Flat top rail



No sanding, staining, or
painting required



Brackets included in each kit



Post caps and trim
pieces available



Level brackets show no
screws





SELECT SERIES 17



Deck Railing

Expanse Select, add new England post caps



Planter Wall Stone: Cambridge Matrix 6" Split Faced Onyx/Natural



York YCD AC Condenser



Vent Hoods

Mid- America Vents- 4" for bath fans and fryer, 6" for range hood.

Paintable to match siding color



Rear Retaining Wall: Genest London Boulder Retaining Wall Blocks and Caps



4' Barrington Vinyl Picket Fence



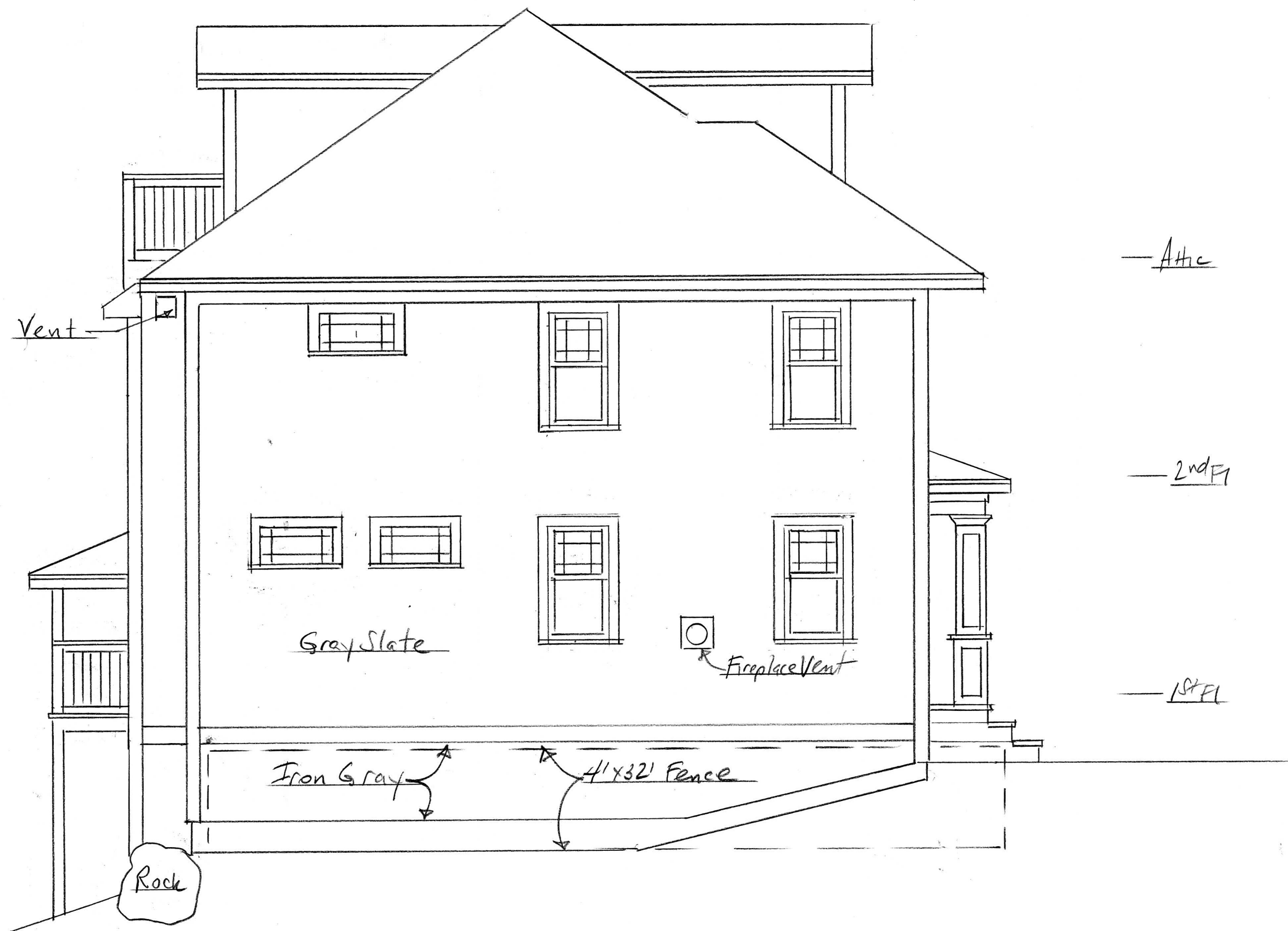
4' Fence Cedar Picket Option



Light Fixture A Globe Electric 44206 with Edison LED bulb



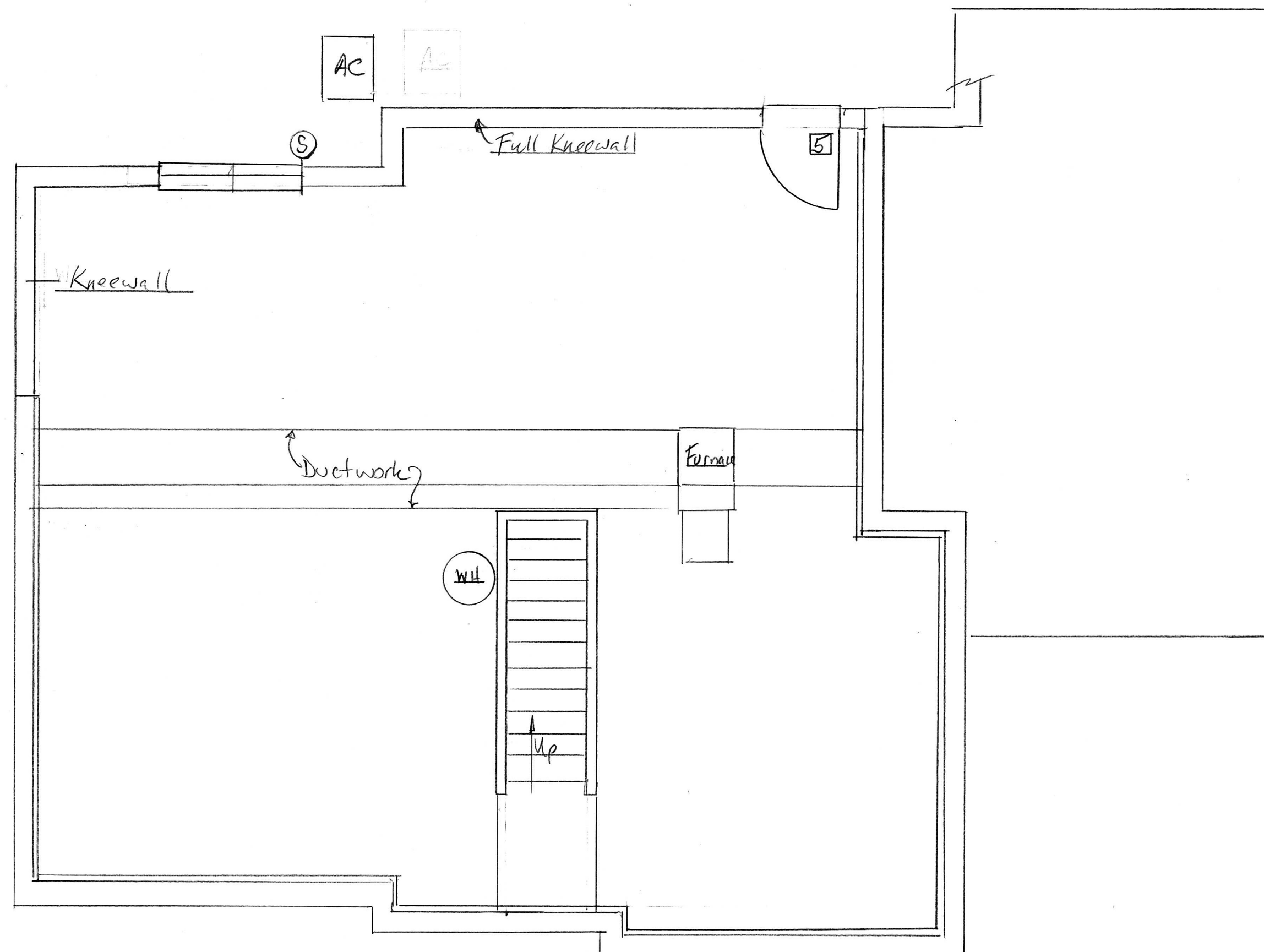
Fixture B, to be in black



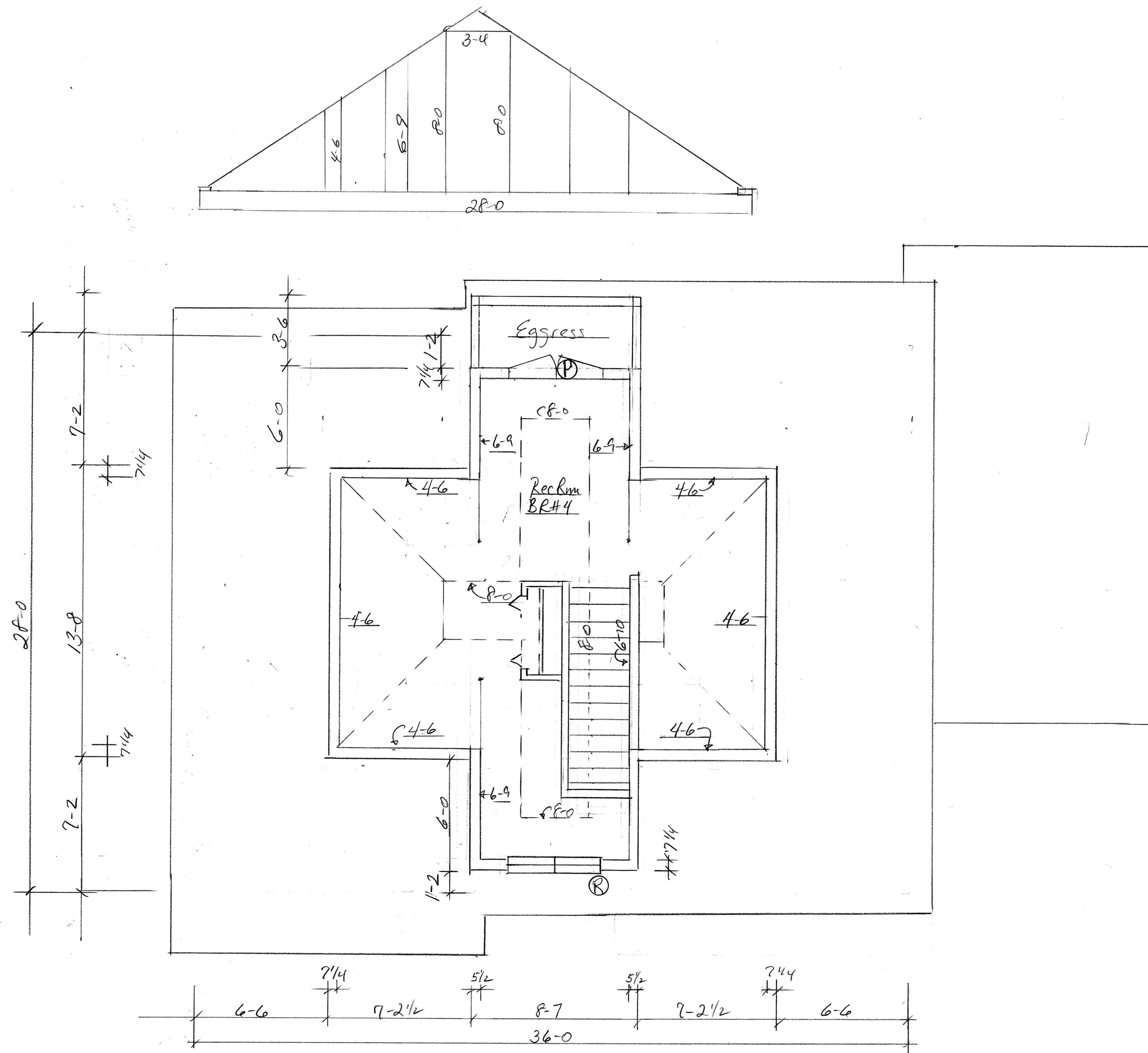
202 55 Lafayette Rd		
SCALE: 1/4"	APPROVED BY:	DRAWN BY:
DATE: 9/10/19		REVISED:
Smithfield Construction		DRAWING NUMBER
Left Elevation		19-6062



Lot 2 55 Lafayette Rd		
SCALE: 1/4"	APPROVED BY:	DRAWN BY:
DATE: 9/10/19		REVISED:
Smithfield Construction		DRAWING NUMBER
Front Elevation		19-6032



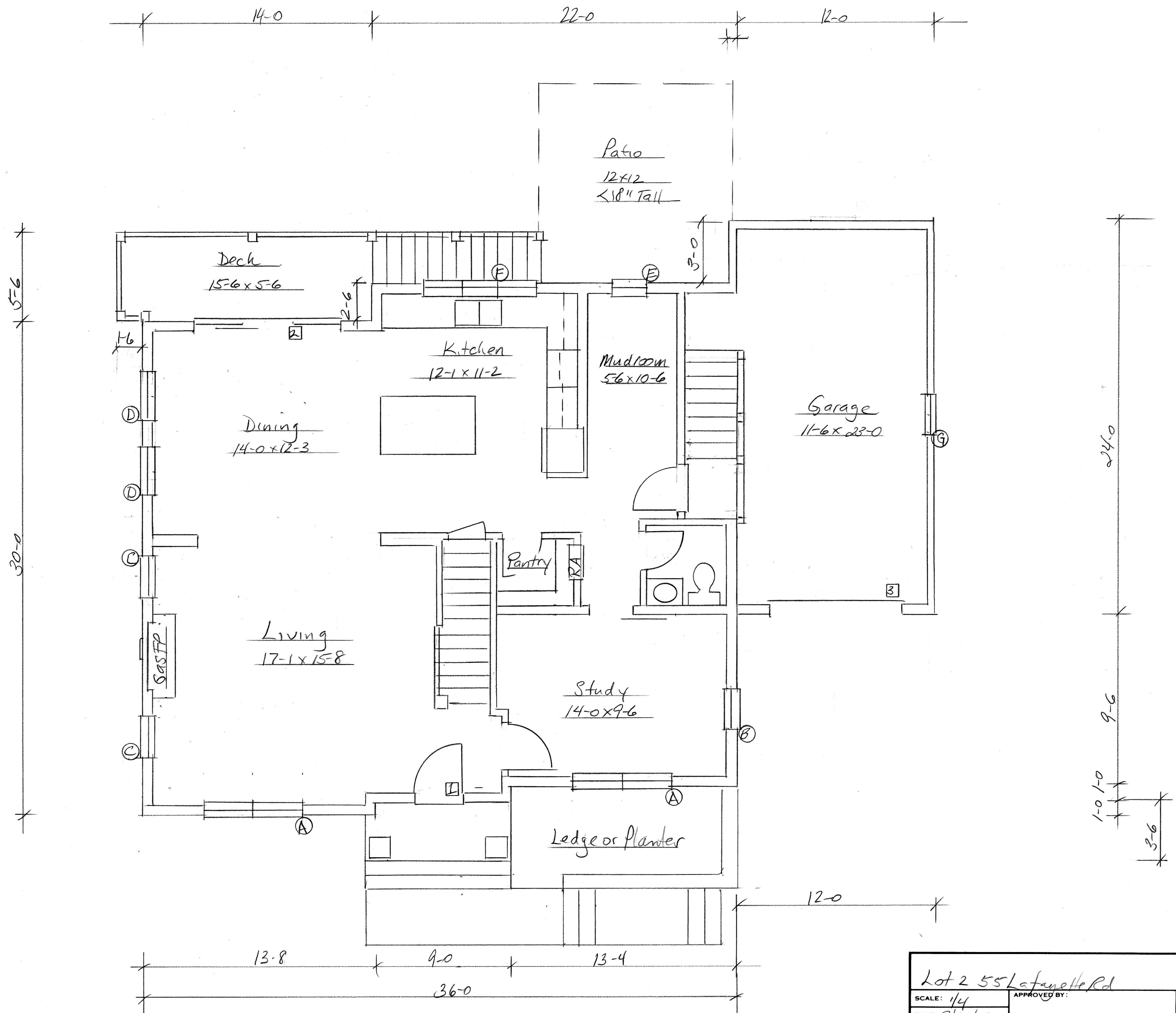
55 Lafayette Rd Lot 2		
SCALE: 1/4"	APPROVED BY:	DRAWN BY
DATE: 9/10/19		REVISED
Smithfield Construction		DRAWING NUMBER
Basement Floor Plan		19-6102



Heated Area 4771 ft

55 Lafayette Rd Lot 2

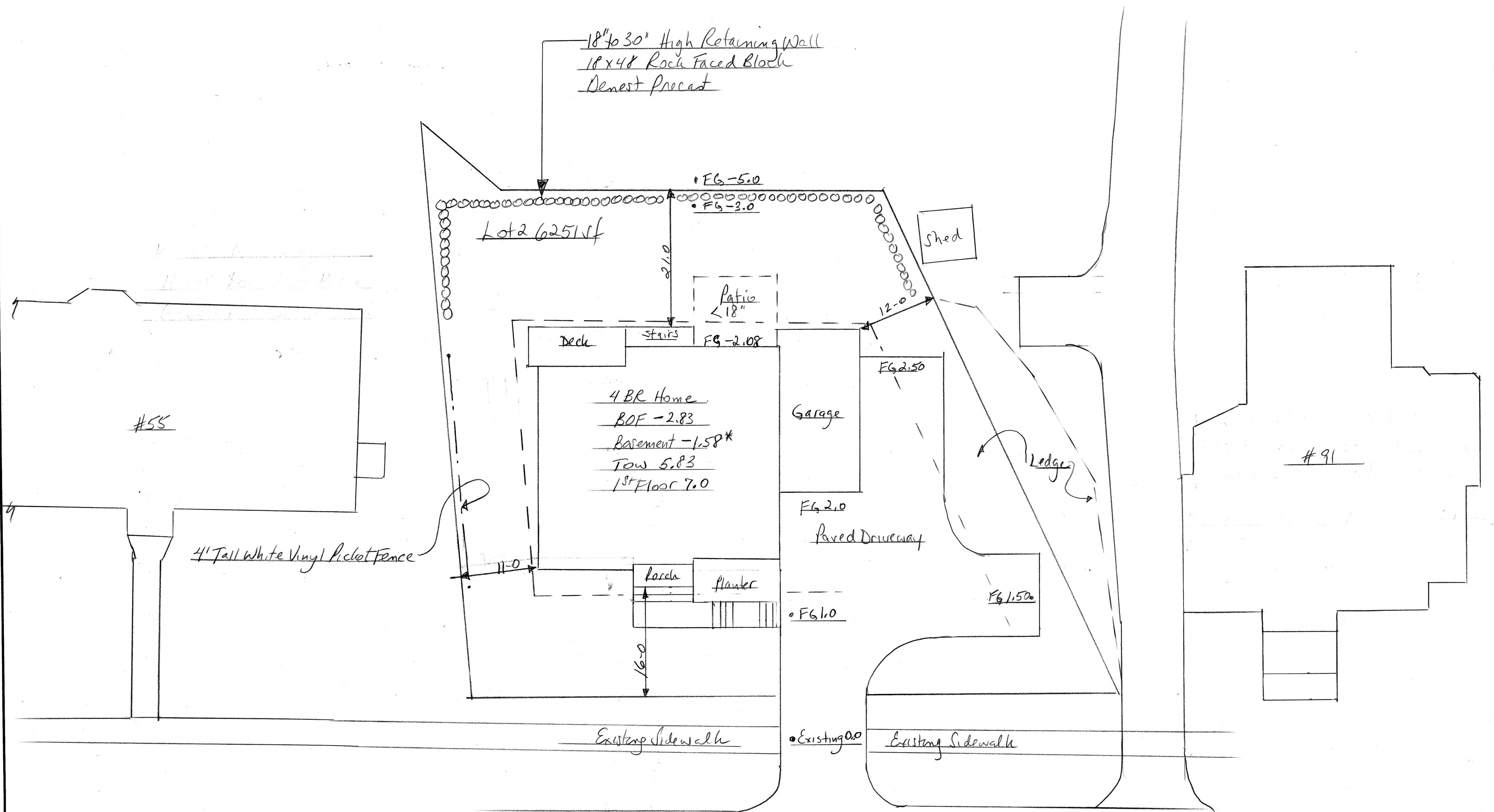
SCALE: 1/4"	APPROVED BY:	DRAWN BY
DATE: 9/10/19		REVISED
Smithfield Construction		DRAWING NUMBER
Attic Floor Plan		19-6092



Lot 2 55 Lafayette Rd		
SCALE: 1/4"	APPROVED BY:	DRAWN BY:
DATE: 9/10/19		REVISED:
Smithfield Construction		DRAWING NUMBER
First Floor Plan		19-6072

Lot 2 Lafayette Road Black Sash and Grille Exterior White Interior										
Date 9-10-19										
Qty	Code	RO	Type	Egress?	Notes	Glass	Grilles- All SDL	Casing	Hist Sill	
2	A	68 x 70	Oriel DH Twin	No		Low E Argon	Prairie over one lite	Field 1 x 5 Azek	Kleer 7435	
1	B	30 x 54	Casement	Yes			Prairie over one lite with checkrail	Field 1 x 5 Azek	Kleer 7435	
2	C	30 x 54	DH	No			Prairie over one lite	Field 1 x 5 Azek	Kleer 7435	
3	D	36 x 18	direct set	No			Prairie	Field 1 x 5 Azek	Kleer 7435	
2	E	26 x 42	DH	No			Prairie over one lite	Field 1 x 5 Azek	Kleer 7435	
1	F	84 x 42	Triple Awning	No	Middle unit fixed		Prairie	Field 1 x 5 Azek	Kleer 7435	
1	G	26 x 45	DH	No	Plain Insul glass-garage		Prairie over one lite	Field 1 x 5 Azek	Kleer 7435	
2	I	68 x 60	DH Twin	Yes			Prairie over one lite	Field 1 x 5 Azek	Kleer 7435	
1	j	34 X 56	DH	No			Prairie over one lite			
2	L	32 x 46	DH	No			Prairie over one lite	Field 1 x 5 Azek	Kleer 7435	
1	M	32 x 16	No Window	No	Fill Only, flat azek, paint to match siding		NA	"	"	
4	N	30 x 54	Egress Casement	Yes			Prairie over one lite with checkrail	"	"	
1	R	62 X 47	DH Twin	No			Prairie over one lite	"	"	
1	P	62 x 48	Casement Twin	Yes			Prairie over one lite with check rail	"	"	
1	S	66 x 56	DH Twin	No			Prairie over one lite	"	"	

Lot 2 55 Lafayette Rd			
SCALE: 1/4"	APPROVED BY:		DRAWN BY
DATE: 9/10/19			REVISED
Smithfield Construction			DRAWING NUMBER
Window Schedule			

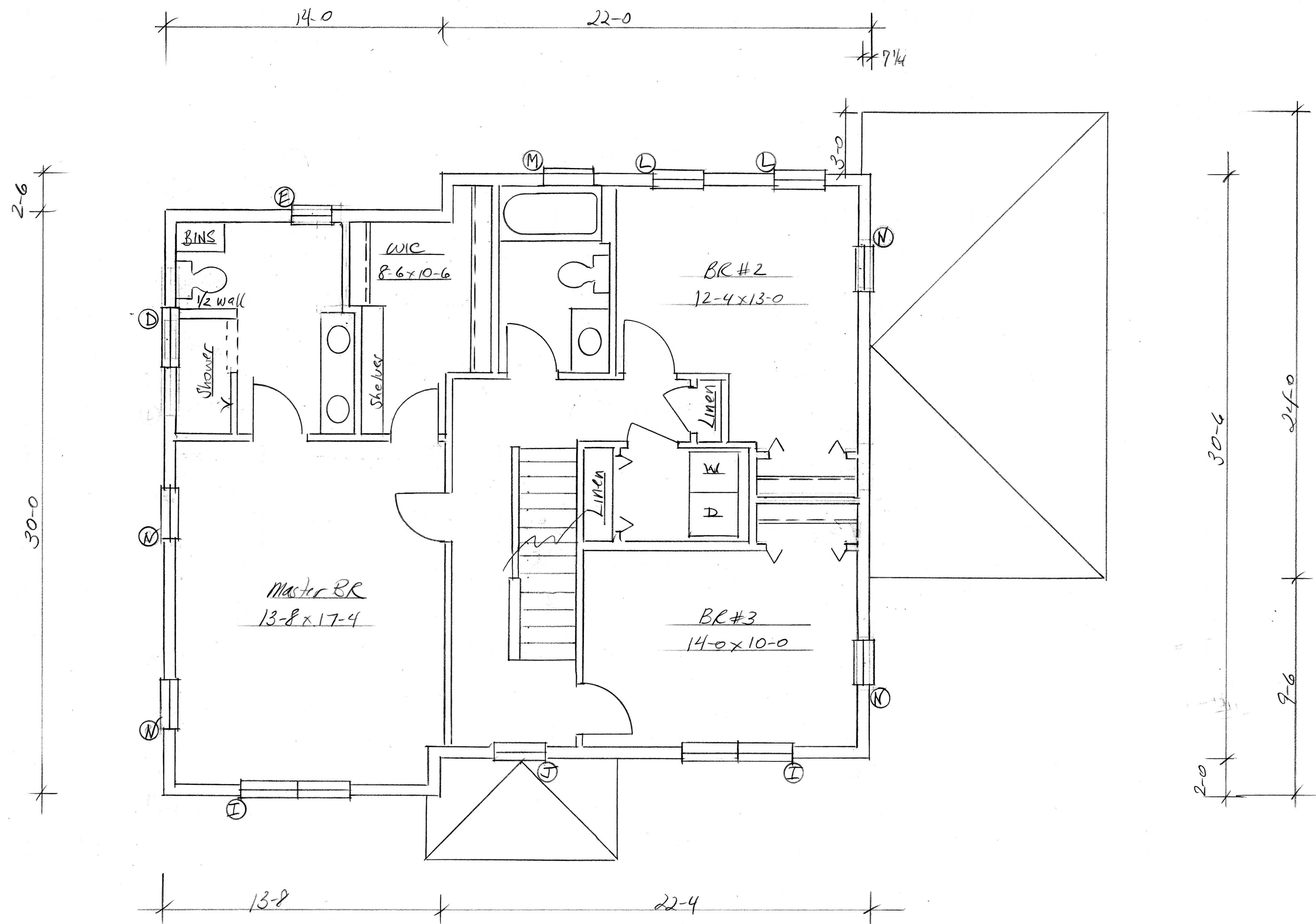


* Foundation Wall Height: 7'-8"

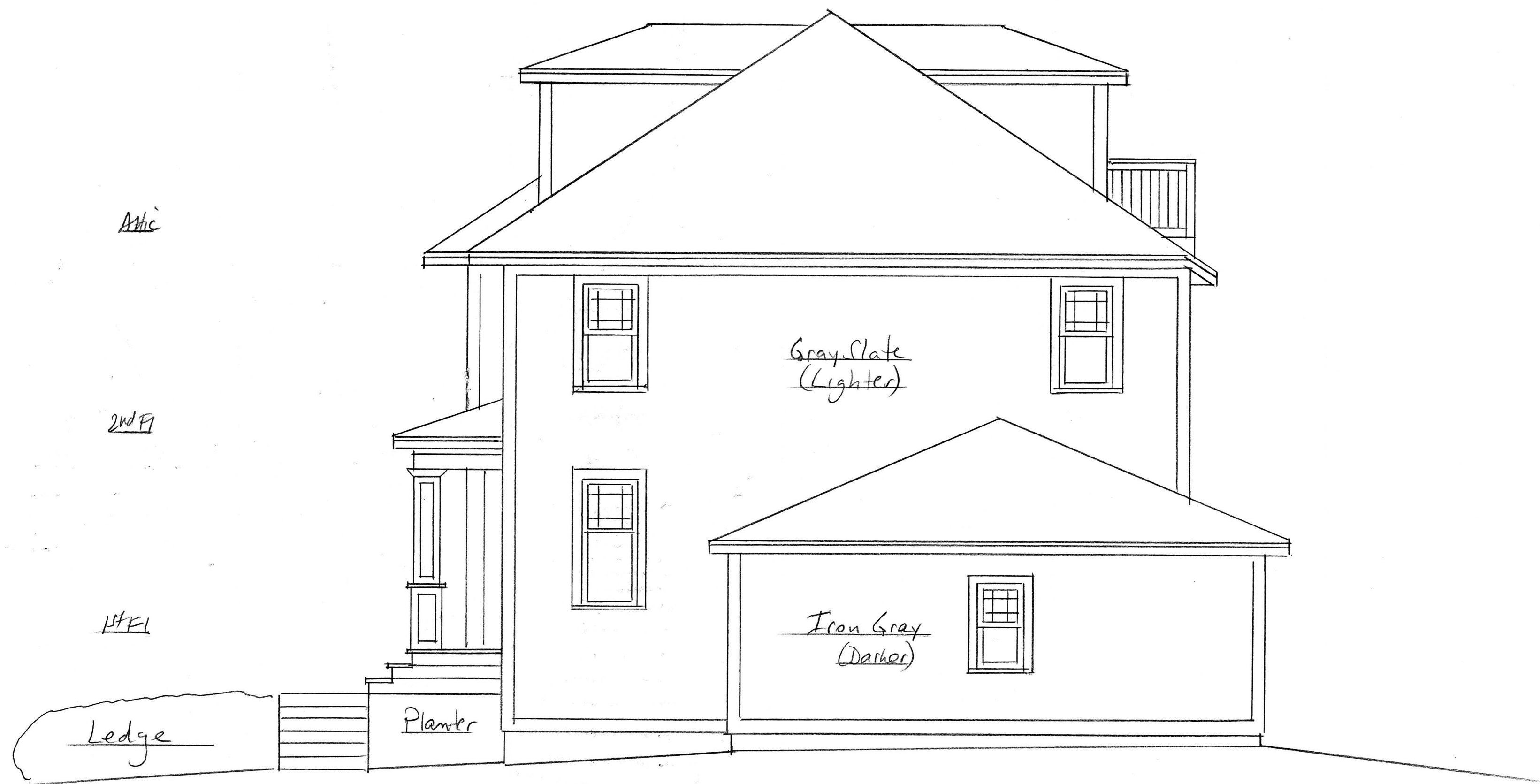
(7'-10" Wall on 8" Footer with stone placed 2" above footer to allow for 2" Styrofoam)

Lafayette Road

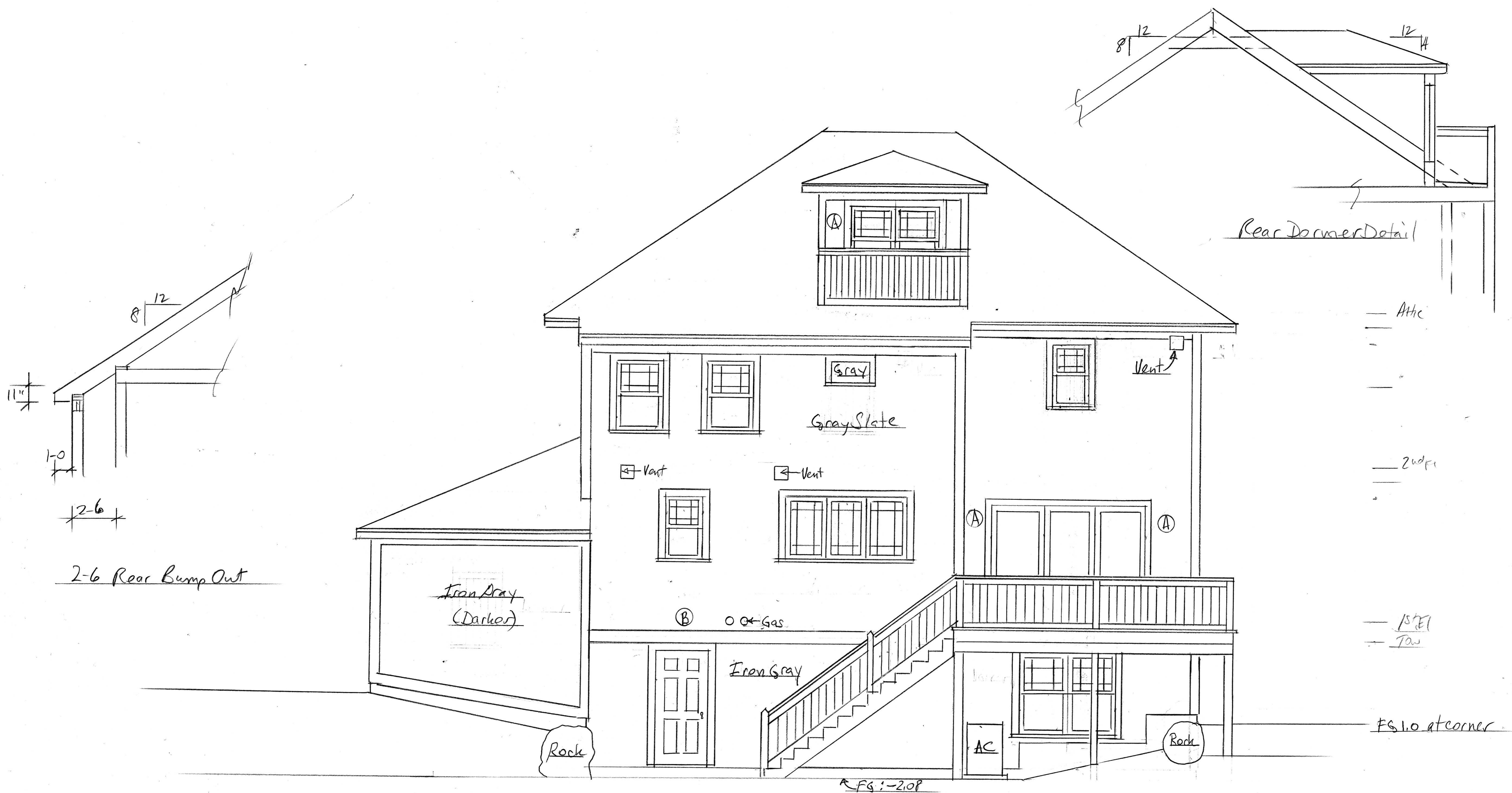
Lot 2 55 Lafayette Road		
SCALE: 1" = 10'	APPROVED BY:	DRAWN BY:
DATE: 9/10/19		REVISED:
Smithfield Construction		DRAWING NUMBER
Site Plan		19-6022



Lot 2 55 Lafayette Rd		
SCALE: 1/4"	APPROVED BY:	DRAWN BY:
DATE: 9/10/19		REVISED:
Smithfield Construction		DRAWING NUMBER
Second Floor Plan		19-6082



Lot 2 55 Lafayette Rd		
SCALE: 1/4"	APPROVED BY:	DRAWN BY
DATE: 9/10/19		REVISED
Smithfield Construction		DRAWING NUMBER
Right Elevation		19-6052



Lot 2 55 Lafayette Rd			
SCALE: 1/4"	APPROVED BY:	DRAWN BY:	
DATE: 9/10/19		REVISED:	
Smithfield Construction			
Rear Elevation			DRAWING NUMBER 19-6042