

An aerial photograph of Portsmouth, New Hampshire, showing a dense urban area with numerous buildings, streets, and green spaces. A prominent bridge spans a river in the upper portion of the image. A specific building is highlighted with a bright cyan color. The text '111 MAPLEWOOD AVENUE' and 'PORTSMOUTH, NH' is overlaid in white on the image.

111 MAPLEWOOD AVENUE
PORTSMOUTH, NH

January 3, 2019



111 MAPLEWOOD AVENUE

Zone 07

Table of Contents

- ① Site Location
- ② History of Downtown Portsmouth
- ③ Downtown Portsmouth
- ④ Nearby Street Grid
- ⑤ 111 Maplewood Ave. Context
- ⑥ Portsmouth Planning Initiatives
- ⑦ Complete Streets Project
- ⑧ Massing Options
- ⑧ Design Intent
- ⑨ Site
- ⑩ Massing

Building Totals

NEW OFFICE BUILDING

(4) Floors

Level 1 - 18,500 SF
 Level 2 - 22,300 SF
 Level 3 - 22,300 SF
 Level 4 - 22,300 SF

Total - 85,400 SF



111 Maplewood Avenue

- A. RUGER DEL
1. City Office
 2. Custom House & Post Office & Telegraph Office.
 3. Court House.
 4. Jail.
 5. High School.
 6. Music Hall.
 7. Ward Schools.
 8. Eastern R. R. Depot.
 9. Concord R. R. Depot.
 10. Cemeteries.
 11. Rockingham House.

- CHURCHES.
- A. Episcopal.
 - B. Unitarian.
 - C. Middle St. Baptist.
 - D. Universalist.
 - E. Congregational.
 - F. Methodist E.

LET. ACC. TO ACT OF CONGRESS, BY J. STONER, MADISON, WIS.

BIRDSEYE VIEW OF

PORTSMOUTH

ROCKINGHAM CO. 1877 NEW HAMPSHIRE.

13. Kearsarge House.
14. Smith's Academy.
15. Portsmouth Artillery Armory.
16. Frank Jones, Brewery.
17. The Eldridge Brewing Co.
18. C. E. Boynton Mineral Water and Bottling works.
19. Kearsarge Mills.
20. W. F. Fernald's Ship Yard.
21. J. K. Nute Shoe Manufacturer.
22. Sam'l Adam's & Co., Lumber Yard.
23. A. A. Fernald's.
24. Thos. E. Call's.

D BREMNER & CO LITH MILWAUKEE WIS

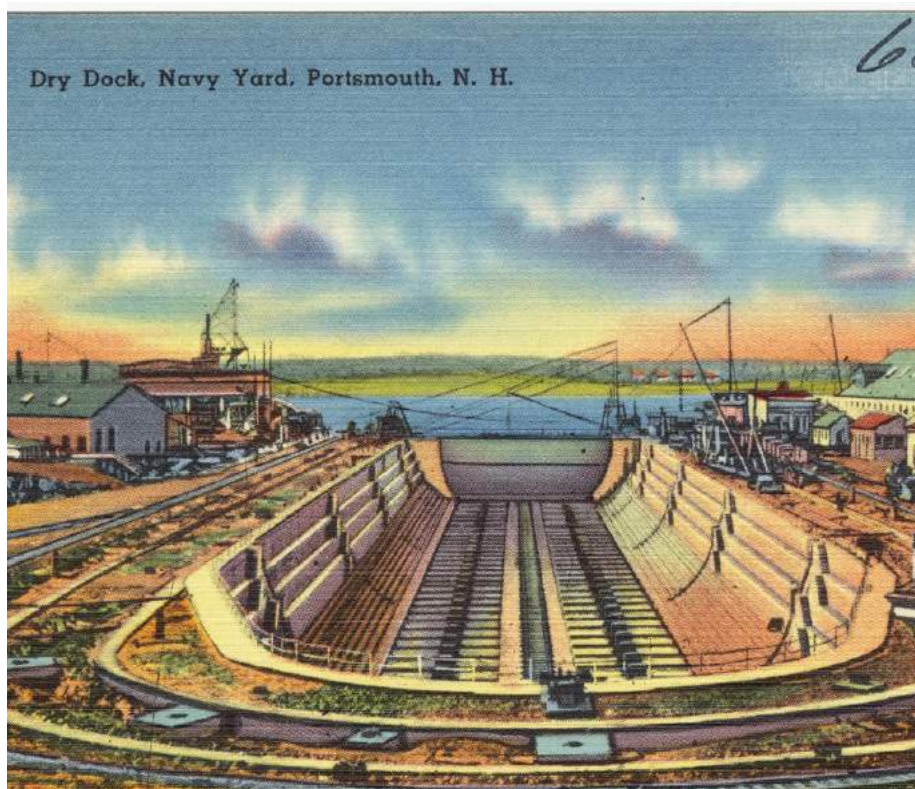
- G. Christian.
- H. F. W. Baptist.
- J. Second Advent.
- K. Catholic.
- L. Congregational.
- M. St. John's Chapel.
- N. Old South, Baptist.



VIEW OF THE UNITED STATES NAVY YARD, AT PORTSMOUTH, N. H.



MARKET SQUARE, PORTSMOUTH, N. H.



Dry Dock, Navy Yard, Portsmouth, N. H.

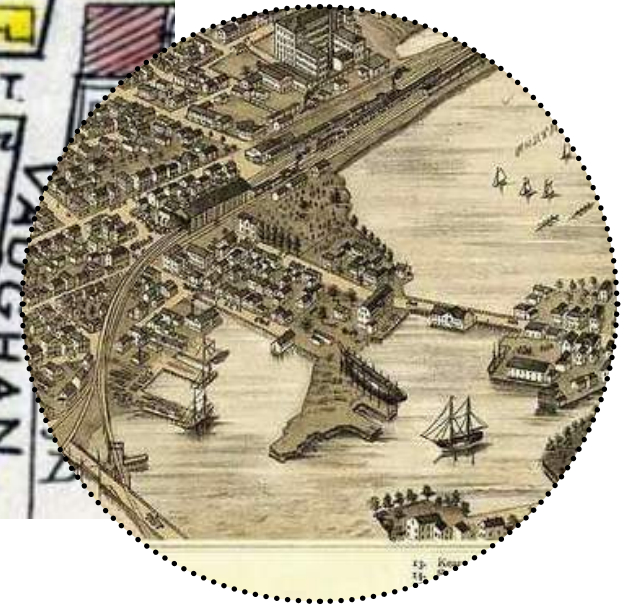
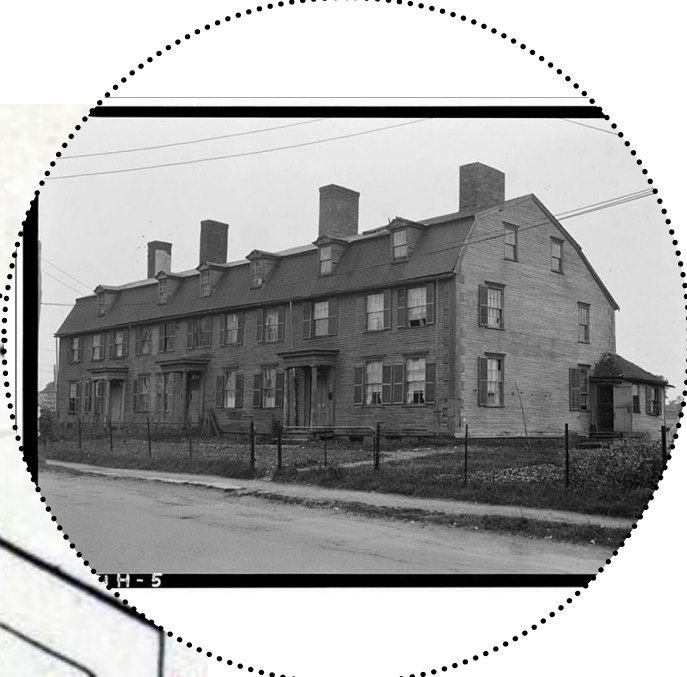
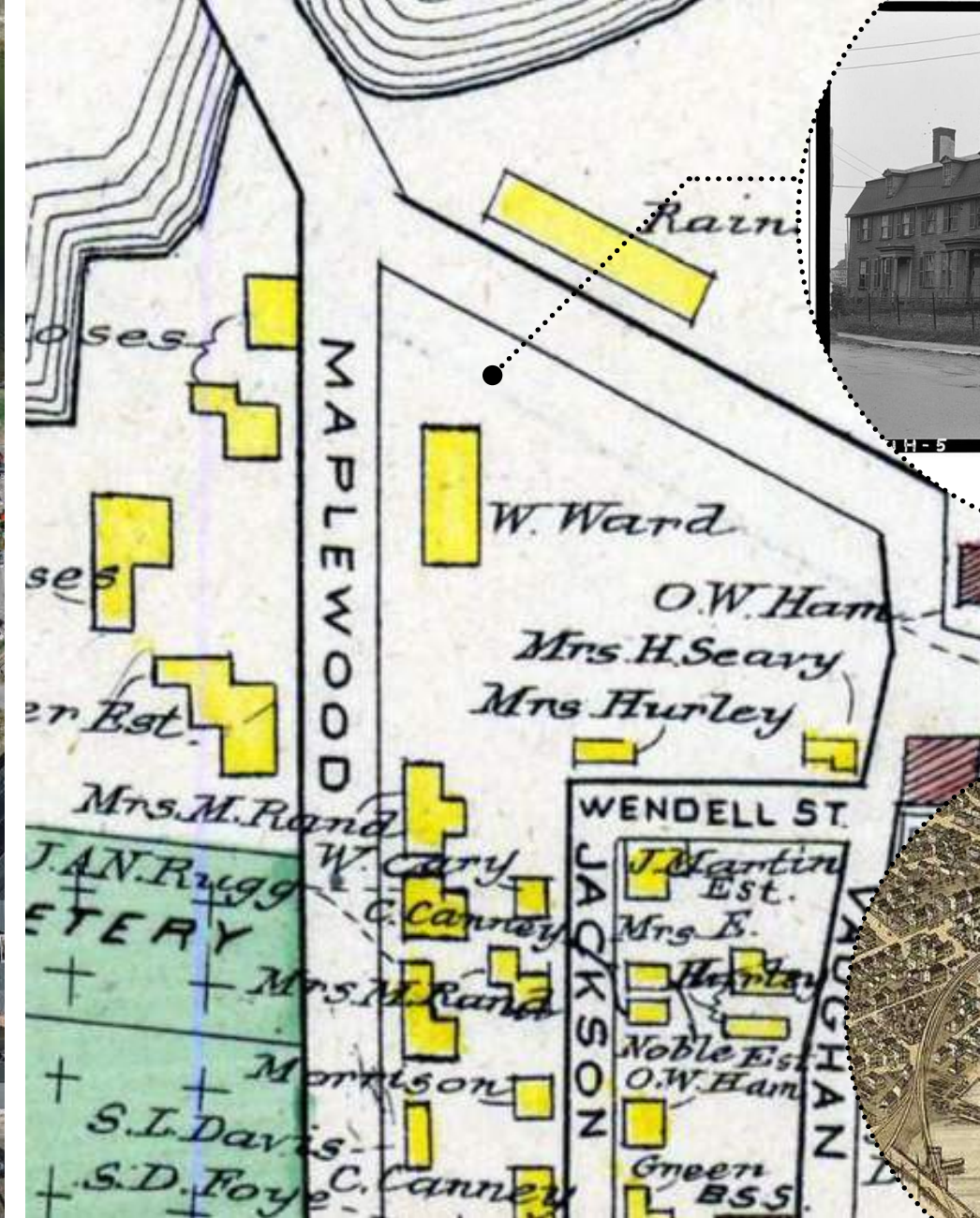
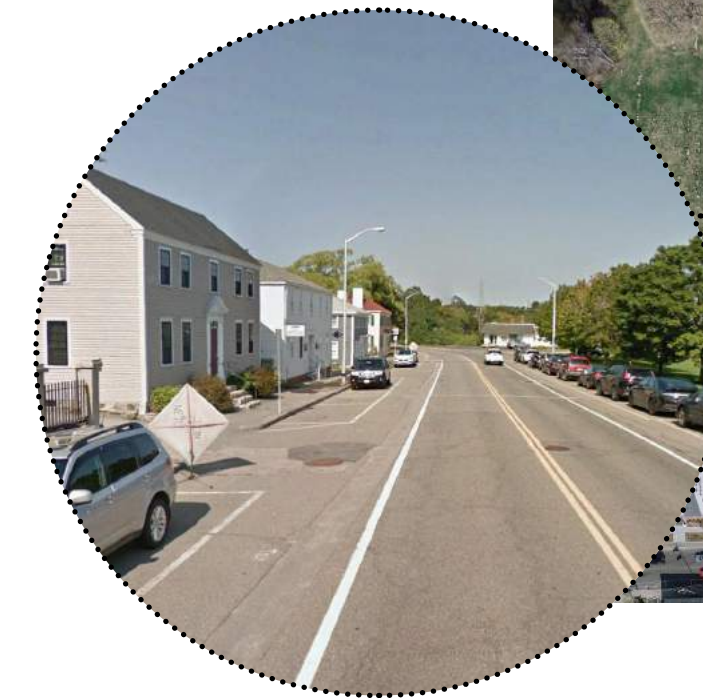




Photo by Kimberly Roseberry

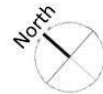






Project Context

Private Development Projects



Maplewood Avenue Downtown Complete Street Project ■ Initial Public Meeting

November 13, 2017

Project Overview

Existing Conditions *Historic Border*



Maplewood Avenue Downtown Complete Street Project ■ Initial Public Meeting

November 13, 2017



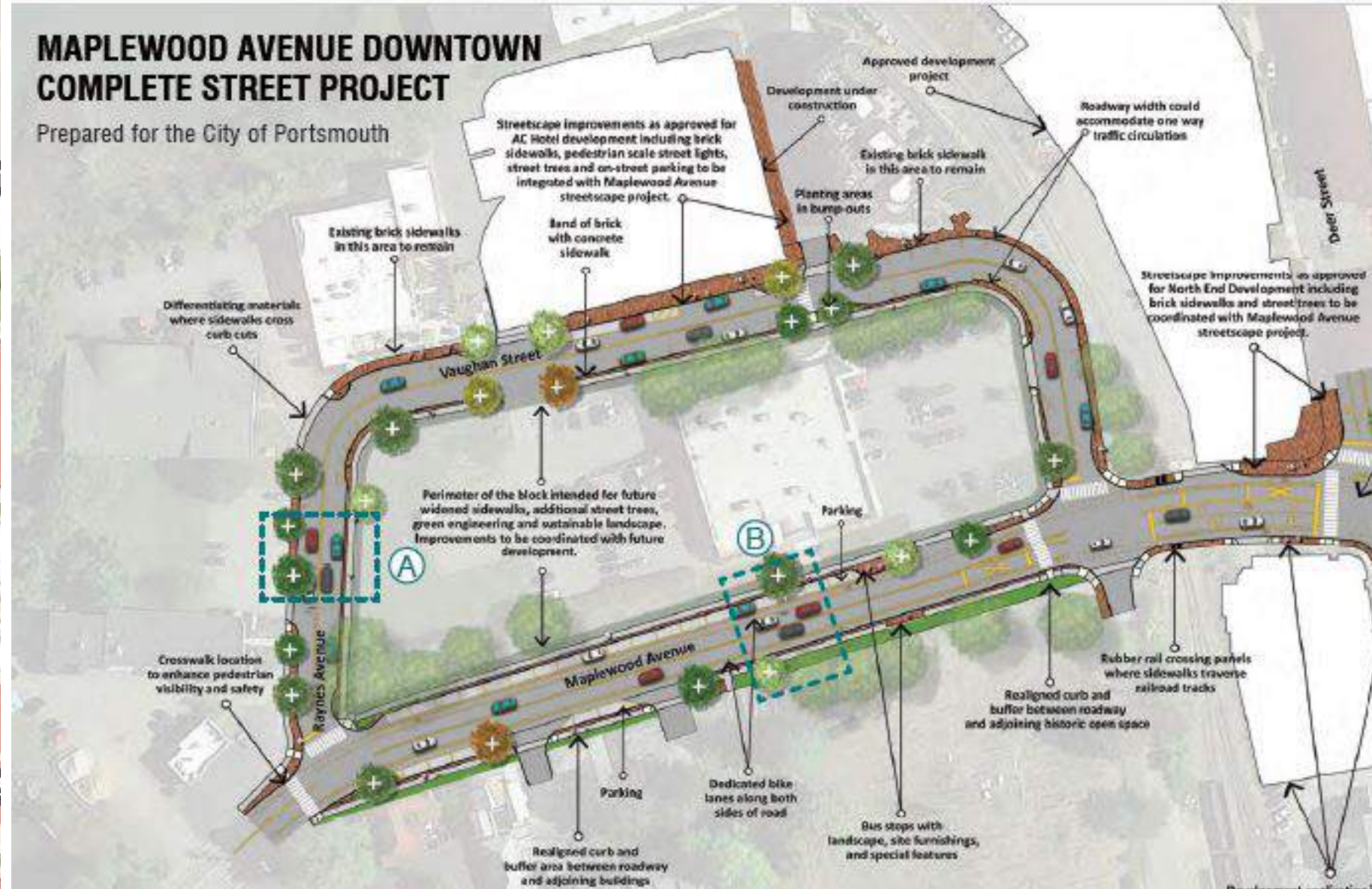
Project Overview

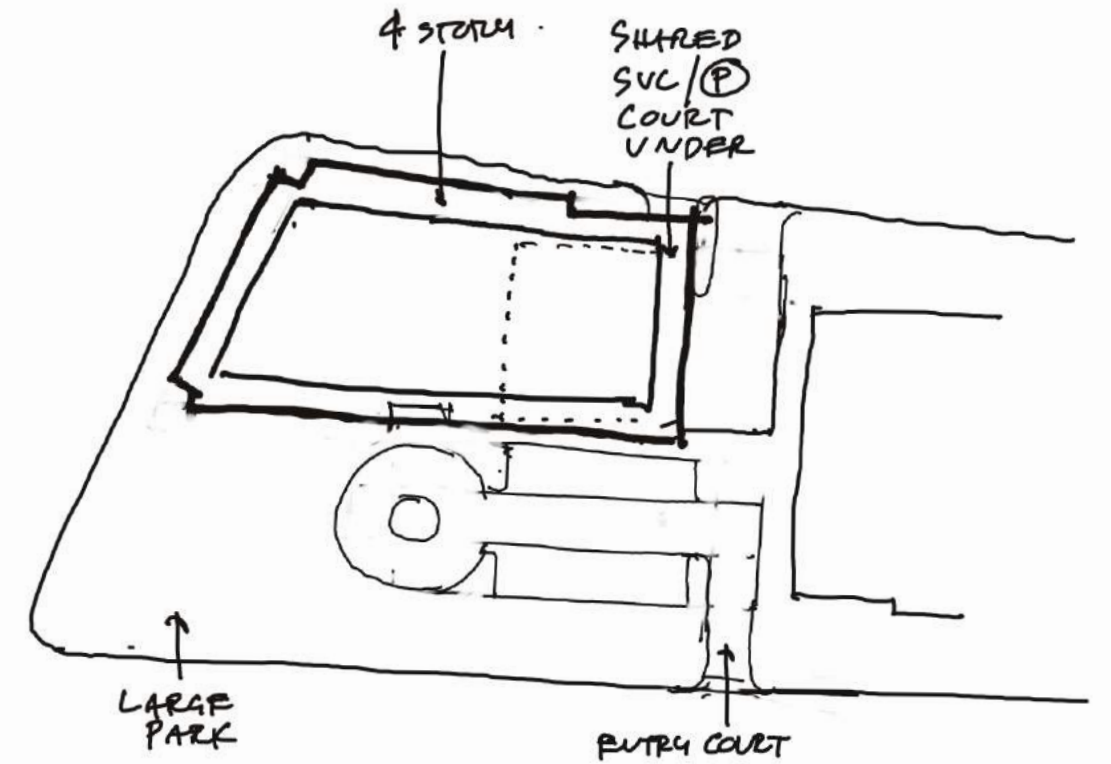
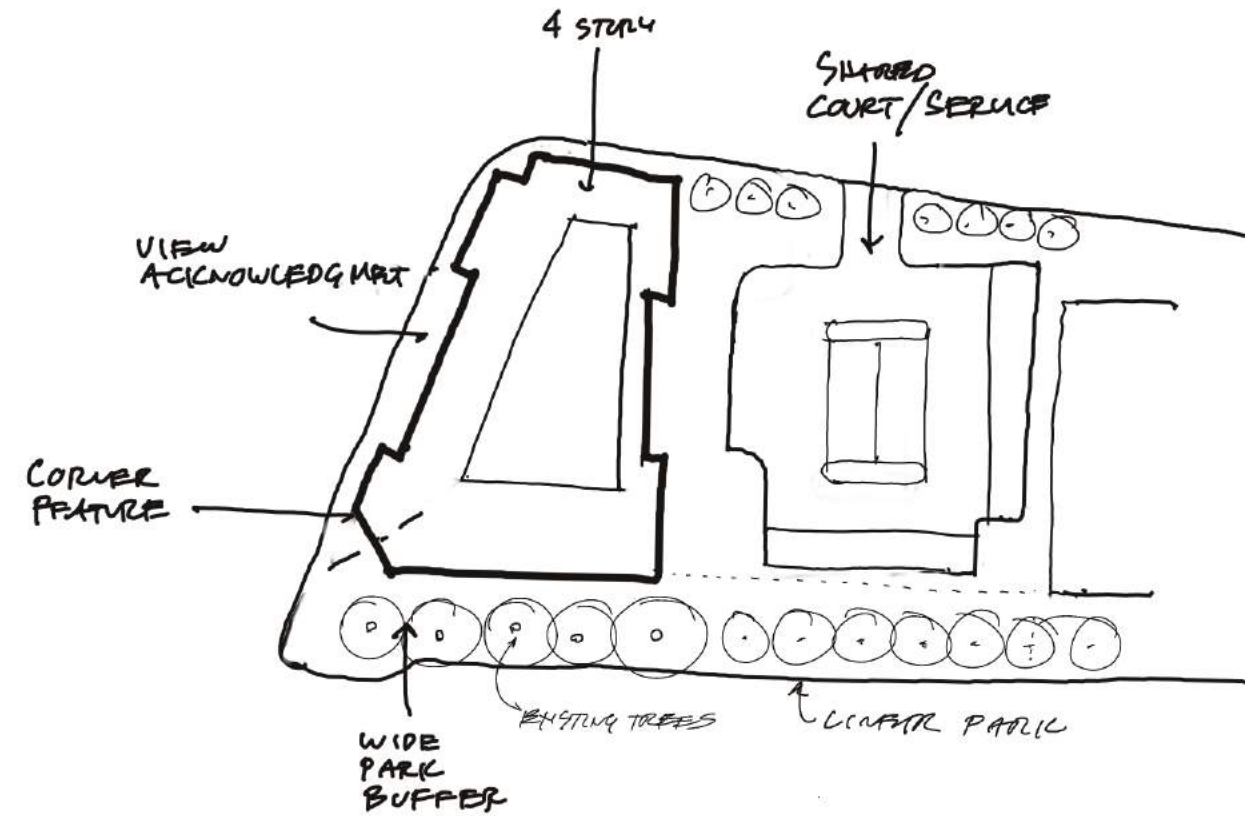
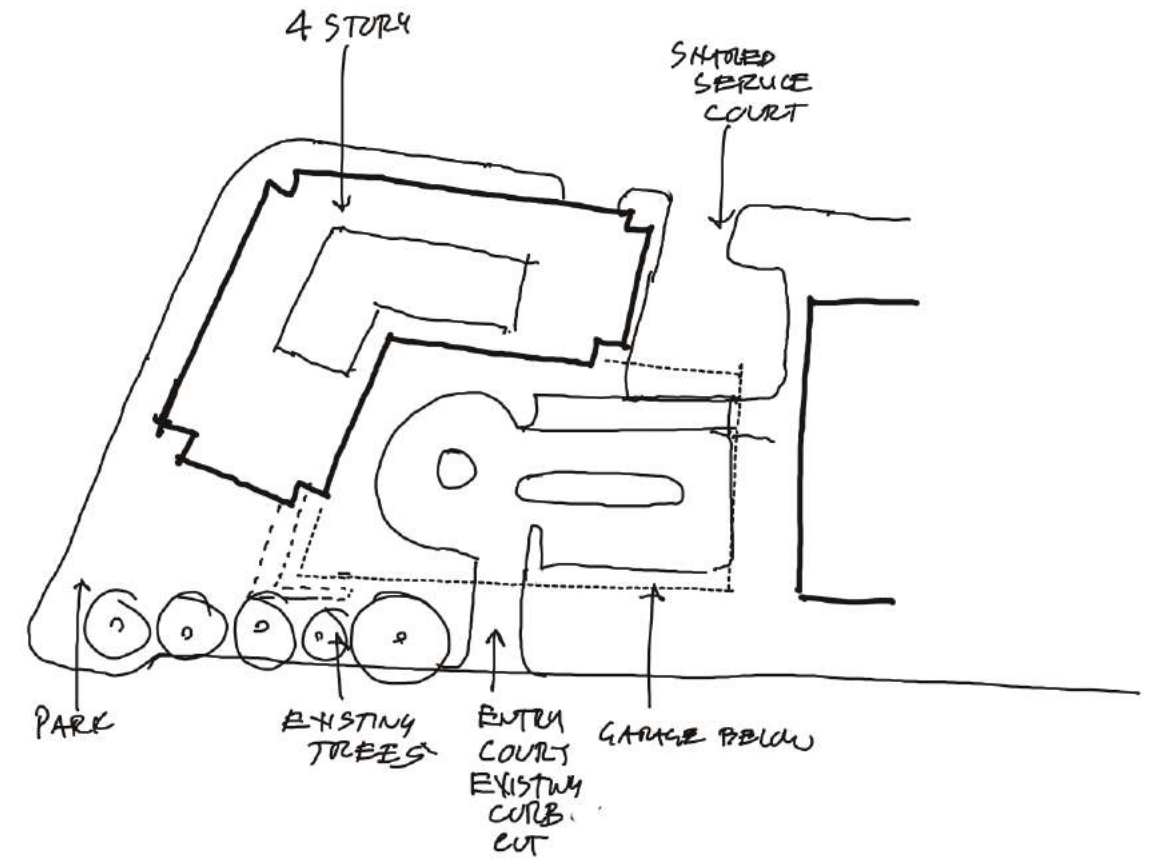
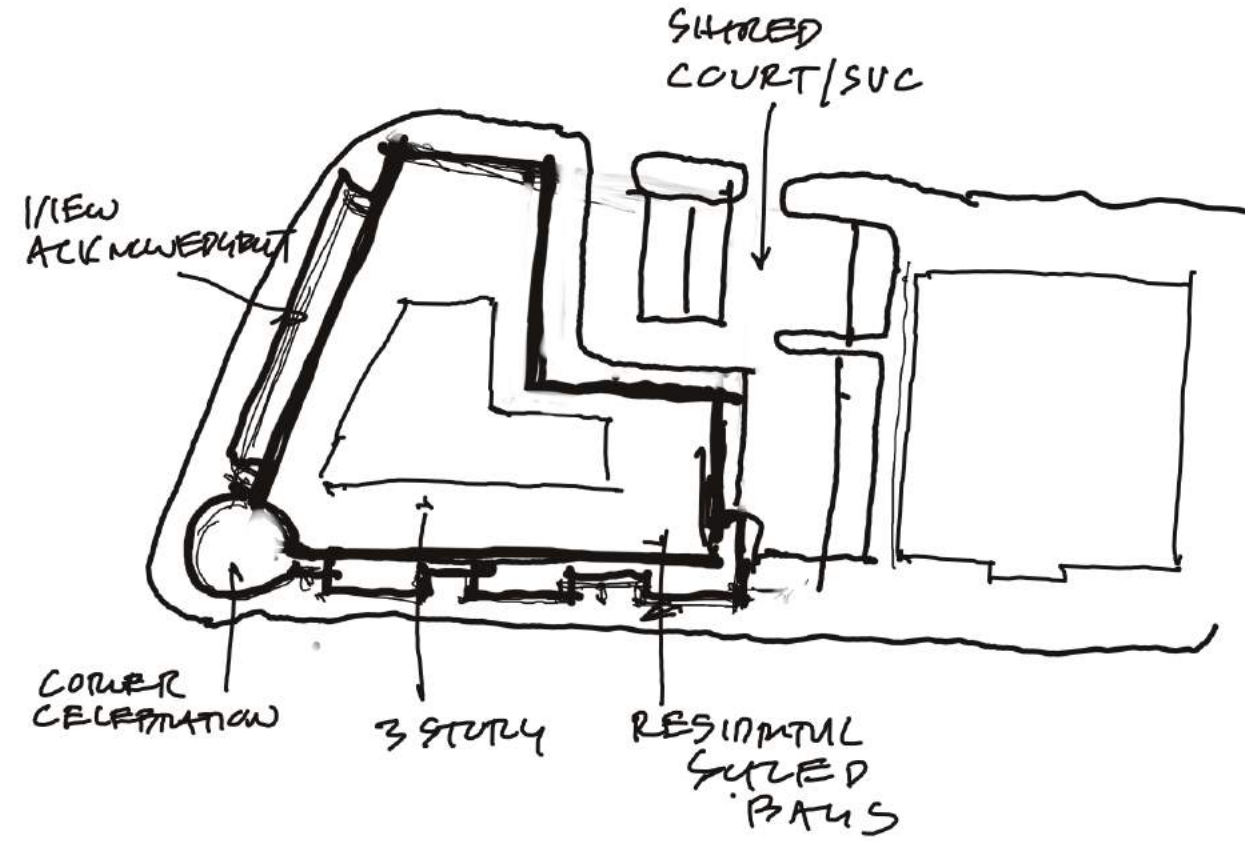
Existing Conditions *Changing Loop*

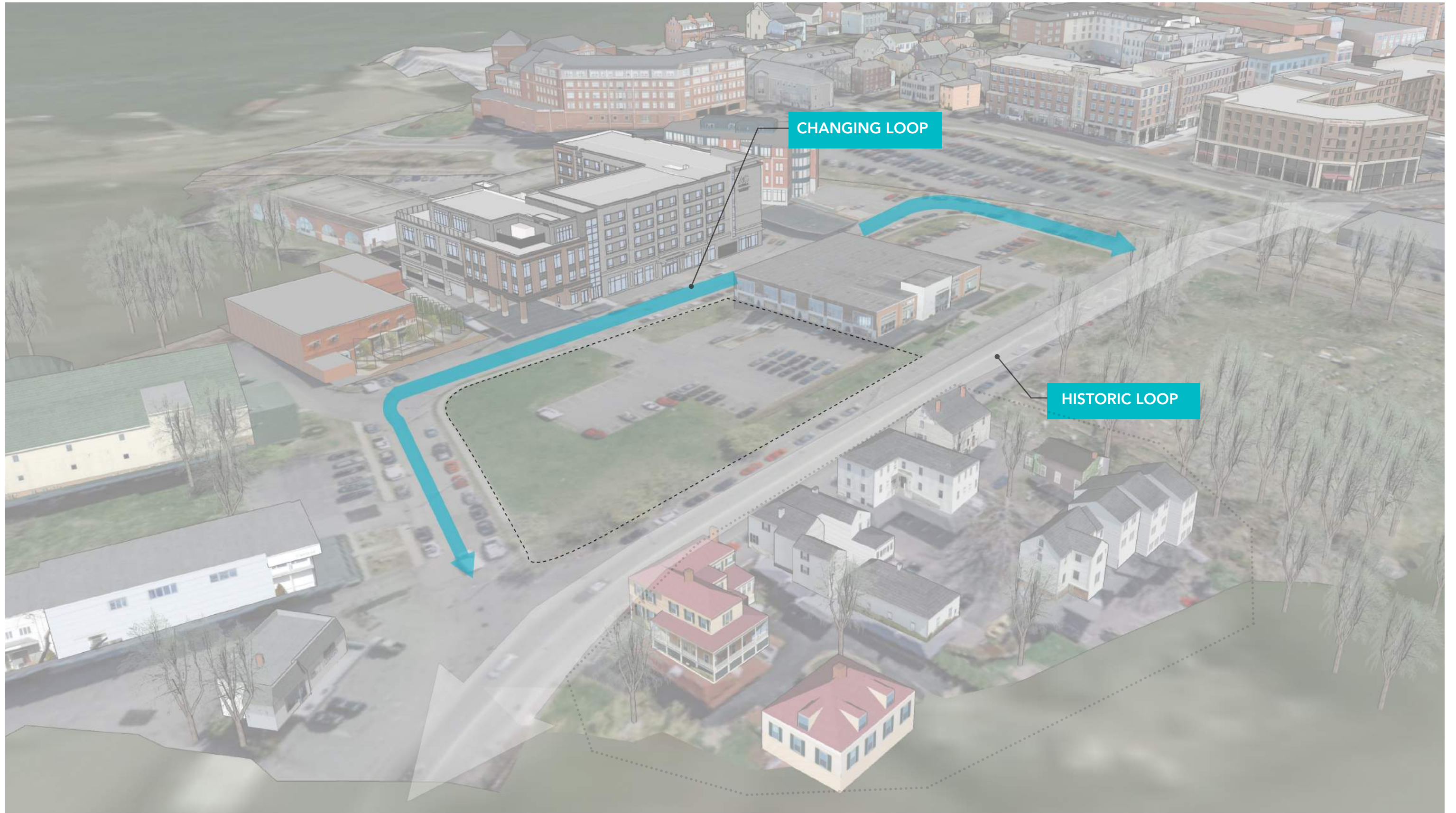


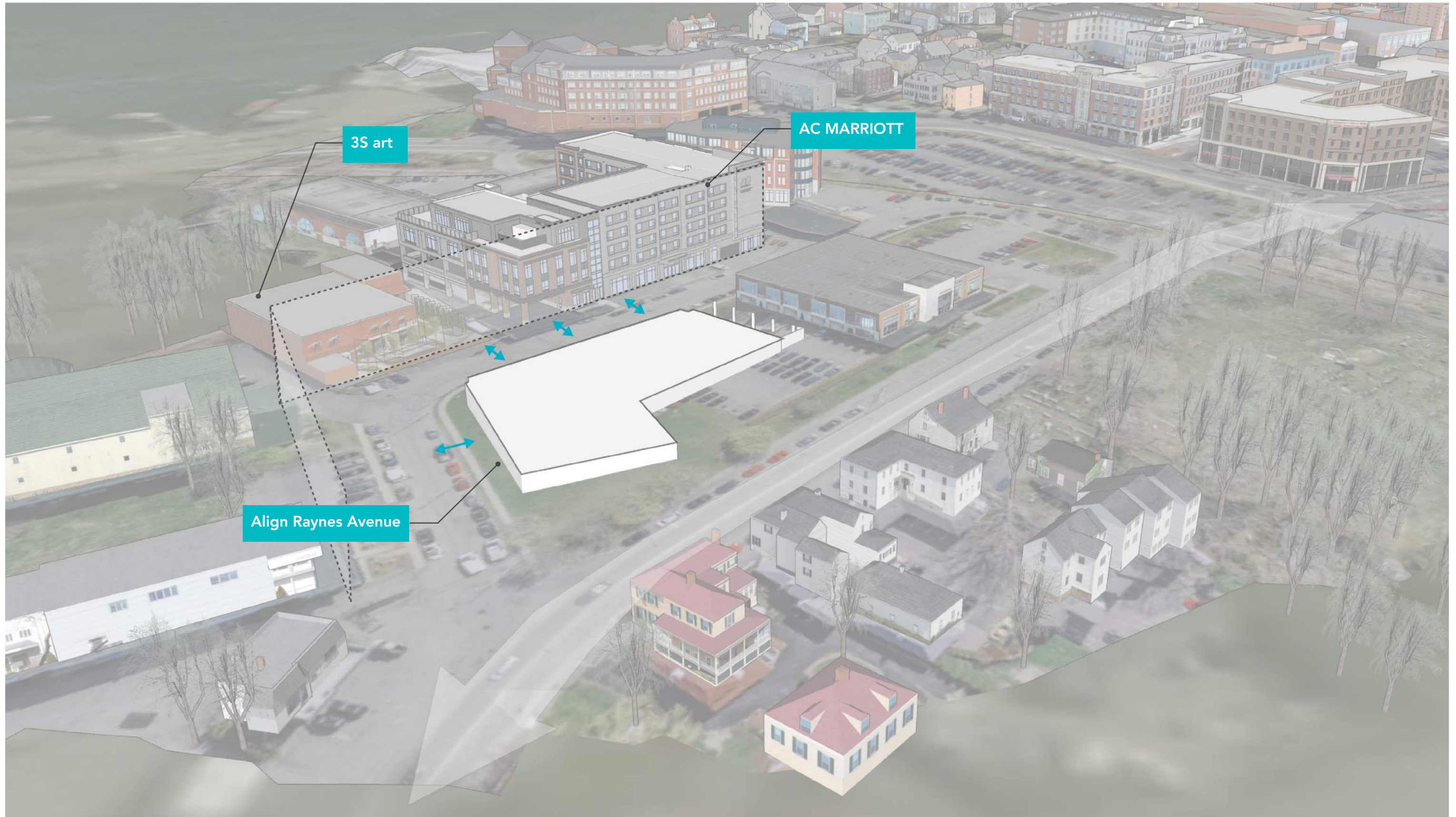
Maplewood Avenue Downtown Complete Street Project ■ Initial Public Meeting

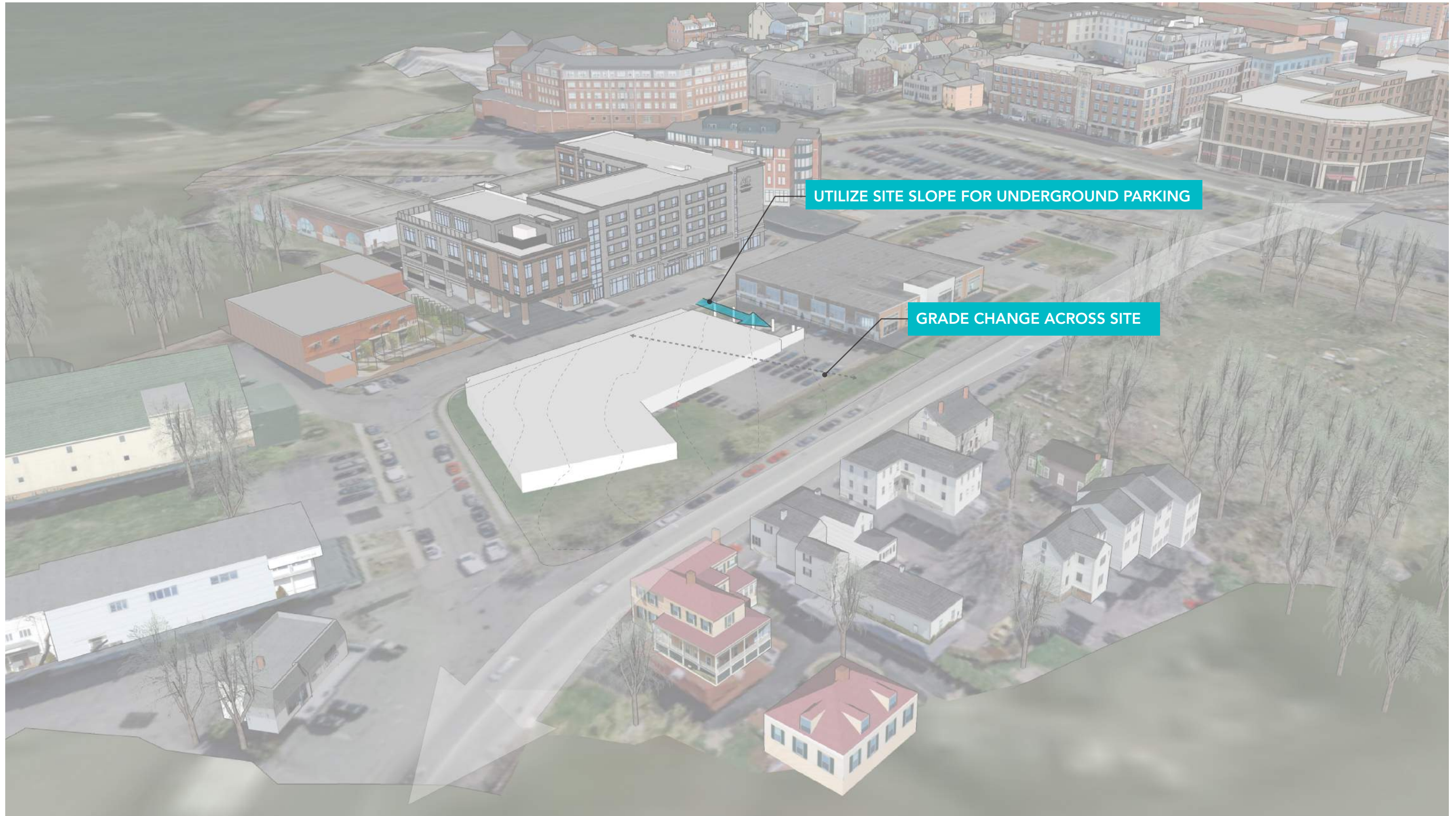
November 13, 2017











UTILIZE SITE SLOPE FOR UNDERGROUND PARKING

GRADE CHANGE ACROSS SITE

