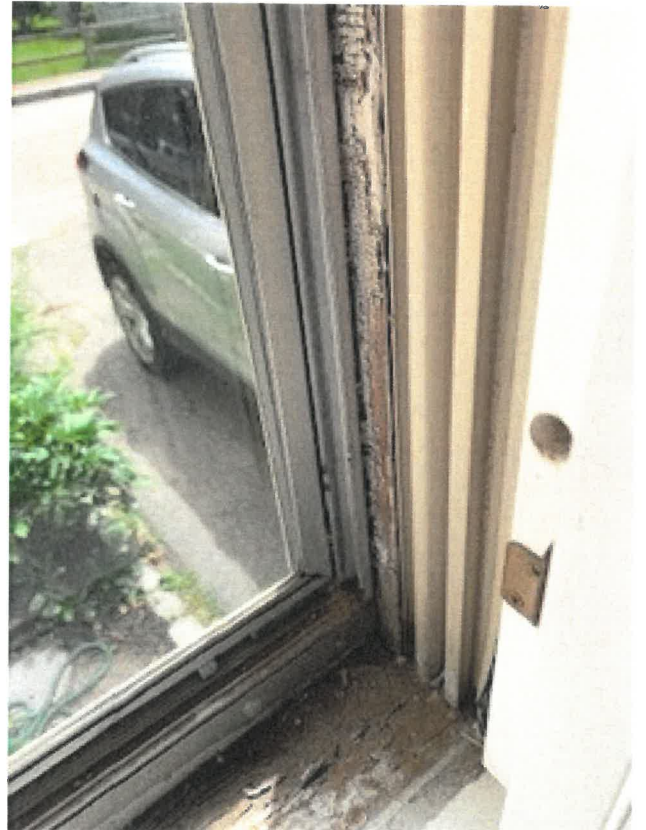
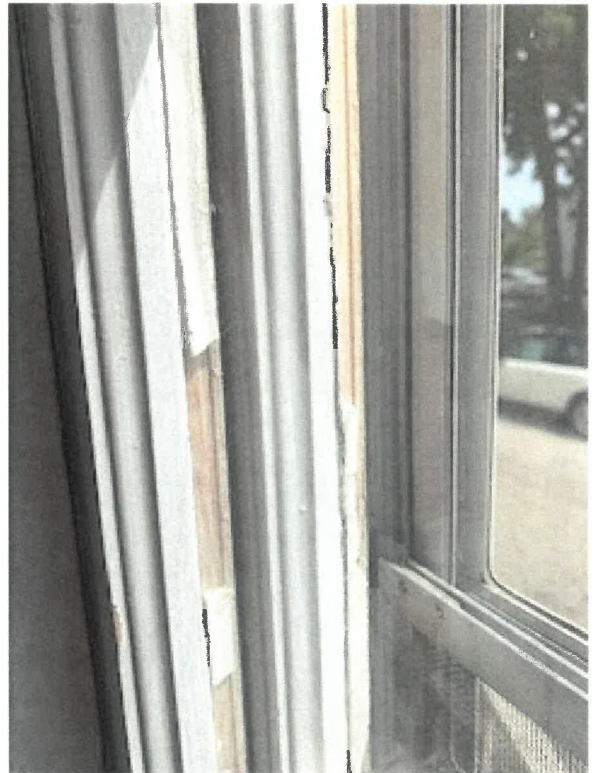


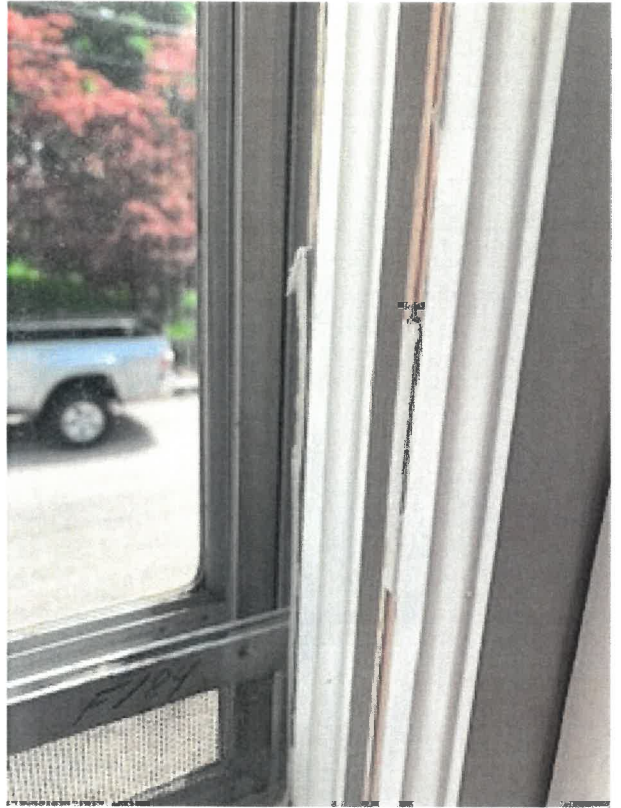
I have done the research on different window manufacturers that the commission suggested. I have chosen the Marvin ELEVATE for my window replacements as an alternate to the Andersen last presented. My neighbors who also fall within the HD on 28 South St and on 38 South St (upper level) both have Marvin insert replacements. I have included photos of the two properties with the Marvin inserts. In addition, is the Information/spec sheet for the Marvin Elevate. They are double hung wood interior inserts with Ultrex (fiberglass exterior) SDL, 7/8's muntins, black half screen and jamb liners will match the sash.

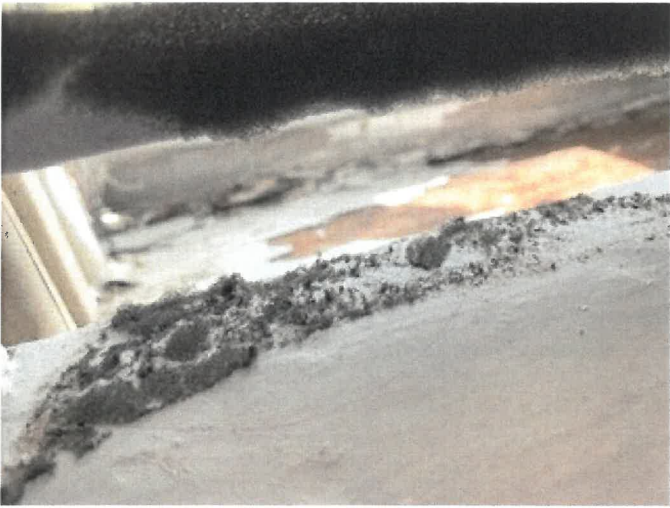
















Double Hung windows with Window Opening Control Devices

DOUBLE HUNG

- Equipped with a standard full screen; optional half screen is available.
- Tilt latches are ergonomically designed and easy to operate making tilting and cleaning effortless.
- Sash lock provides a positive detent, reassuring user that the window is either locked or unlocked.
- Up to PG50 performance rating.
- Equal, Cottage, and Reverse Cottage sash provide a variety of looks and checkrail heights.
- Available in standard and special sizes up to 4 feet 6 inches wide by 7 feet high.
- Coordinating Picture and Transom windows also available.
- Double Hung Insert option features ¾ inch insert replacement frame with through jamb installation and up to PG40 performance rating.

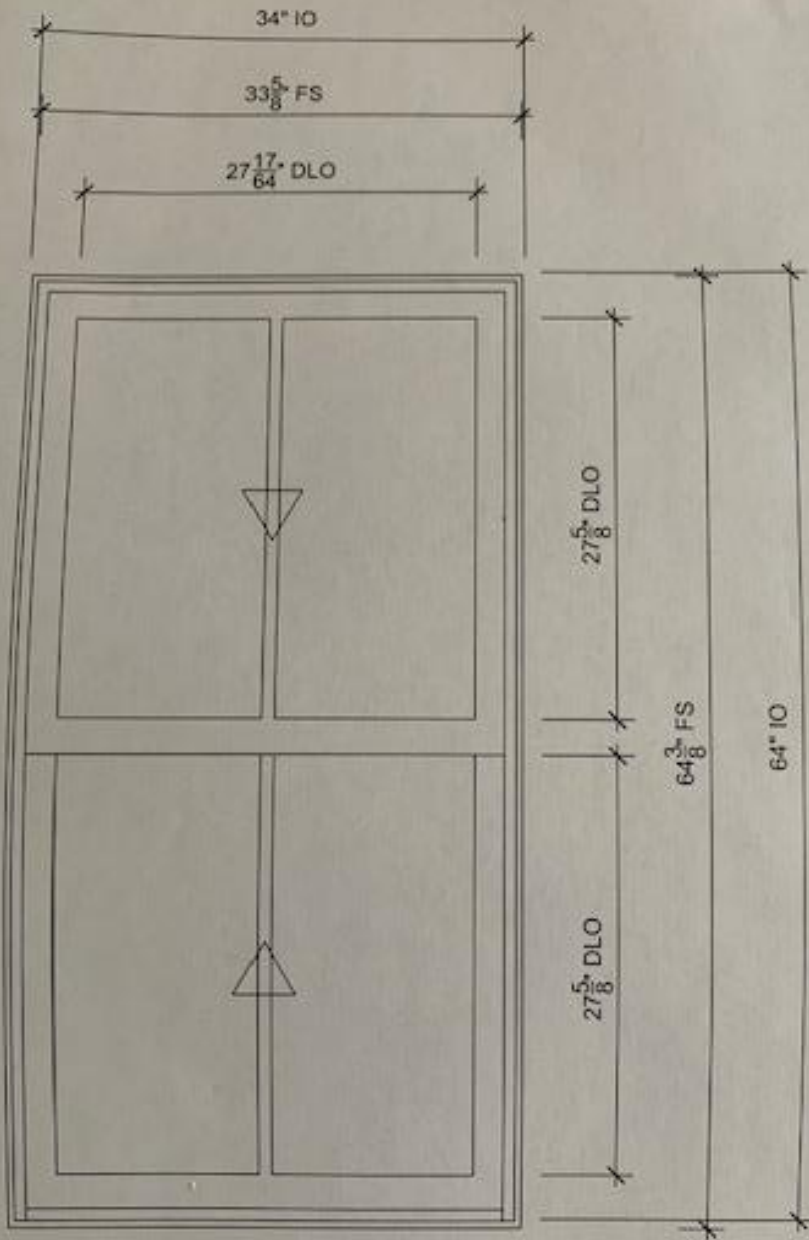


DOUBLE HUNG



DOUBLE HUNG INSERT

Available with (2)
 (Excludes Insert options)



INSERT 30X64

Minor, Sarah
458 Marcy Street

Quote #: 3A8NSNY

A Proposal for Window and Door Products prepared for:
Job Site:
03801

Shipping Address:
SELECTWOOD-MWD SHOWCASE
275 CONSTITUTION AVE
PORTSMOUTH, NH 03801-8600

SELECTWOOD


The Choice For Building Professionals

BRUCE REICHARD
SELECTWOOD-MWD SHOWCASE
275 Constitution Avenue
Portsmouth, NH 03801
Phone: (603) 436-9663

Email: brucer@selectwood.com

This report was generated on 8/13/2020 4:31:47
PM using the Marvin Order Management System,
version 0003.03.00 (Current). Price in USD. Unit
availability and price are subject to change. Dealer
terms and conditions may apply.

Featuring products from:

MARVIN 

UNIT SUMMARY

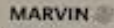
The following is a schedule of the windows and doors for this project. For additional unit details, please see Line Item Quotes.
Additional charges, tax or Terms and Conditions may apply. Detail pricing is per unit.

NUMBER OF LINES: 1		TOTAL UNIT QTY: 1		EXT NET PRICE: USD 806.03		
LINE	MARK UNIT	PRODUCT LINE	ITEM	NET PRICE	QTY	EXTENDED NET PRICE
1	Insert 30x64	Elevate	Double Hung Insert 10 34" X 64" Entered as Inside Opening 34" X 64"	806.03	1	806.03

LINE ITEM QUOTES

The following is a schedule of the windows and doors for this project. For additional unit details, please see Line Item Quotes. Additional charges, tax or Terms and Conditions may apply. Detail pricing is per unit.

Line #1	Mark Unit: insert 30x64	Net Price:	806.03
Qty: 1		Ext. Net Price: USD	806.03



As Viewed From The Exterior

Entered As: IO
 15 33 5/8" X 64 3/8"
 IO 34" X 64"

Egress Information
 Width: 29 31/32" Height: 36 43/64"
 Net Clear Opening: 5.56 SqFt

- Ebony Exterior
- Painted Interior Finish - Designer Black Pine Interior
- Elevate Double Hung Insert
- Inside Opening 34" X 64"
- 8 Degree Frame Bevel
- Top Sash:
 - Ebony Exterior
 - Painted Interior Finish - Designer Black Pine Interior
 - IG
 - Low E2 w/Argon
 - Black Perimeter and Spacer Bar
 - 7/8" SDI - With Spacer Bar - Black
 - Rectangular 2WD11
 - Ebony Ext - Painted Interior Finish - Designer Black Int
- Bottom Sash:
 - Ebony Exterior
 - Painted Interior Finish - Designer Black Pine Interior
 - IG
 - Low E2 w/Argon
 - Black Perimeter and Spacer Bar
 - 7/8" SDI - With Spacer Bar - Black
 - Rectangular 2WD11
 - Ebony Ext - Painted Interior Finish - Designer Black Int
- Black Weather Strip Package
- 1 Matte Black Sash Lock
- Exterior Inset Screen
- Ebony Surround
- Charcoal Fiberglass Mesh
- 3 1/4" Jamb
- Thru Jamb Installation
- Exiting 58 Angle 8

***Note: Divided lite cut alignment may not be accurately represented in the OMS drawing. Please consult your local representative for exact specifications.
 ***Note: Unit Availability and Price is Subject to Change

Initials required

Seller: _____

Buyer: _____

Project Subtotal Net Price: USD	806.03
0.000% Sales Tax: USD	0.00
Project Total Net Price: USD	806.03



Example Marvin Window



Example Marvin Window



Example Marvin Windows



Example Marvin Windows