



**SPRINGER'S JEWELERS PORTSMOUTH
EXTERIOR RENOVATIONS**

100 MARKET STREET, PORTSMOUTH, NH

HDC WORK SESSION

OCTOBER 07, 2020

CANAL 5 STUDIO
Architecture / Planning / Interior Design

207 553 2115
One Canal Plaza, Suite 888
Portland, Maine 04101

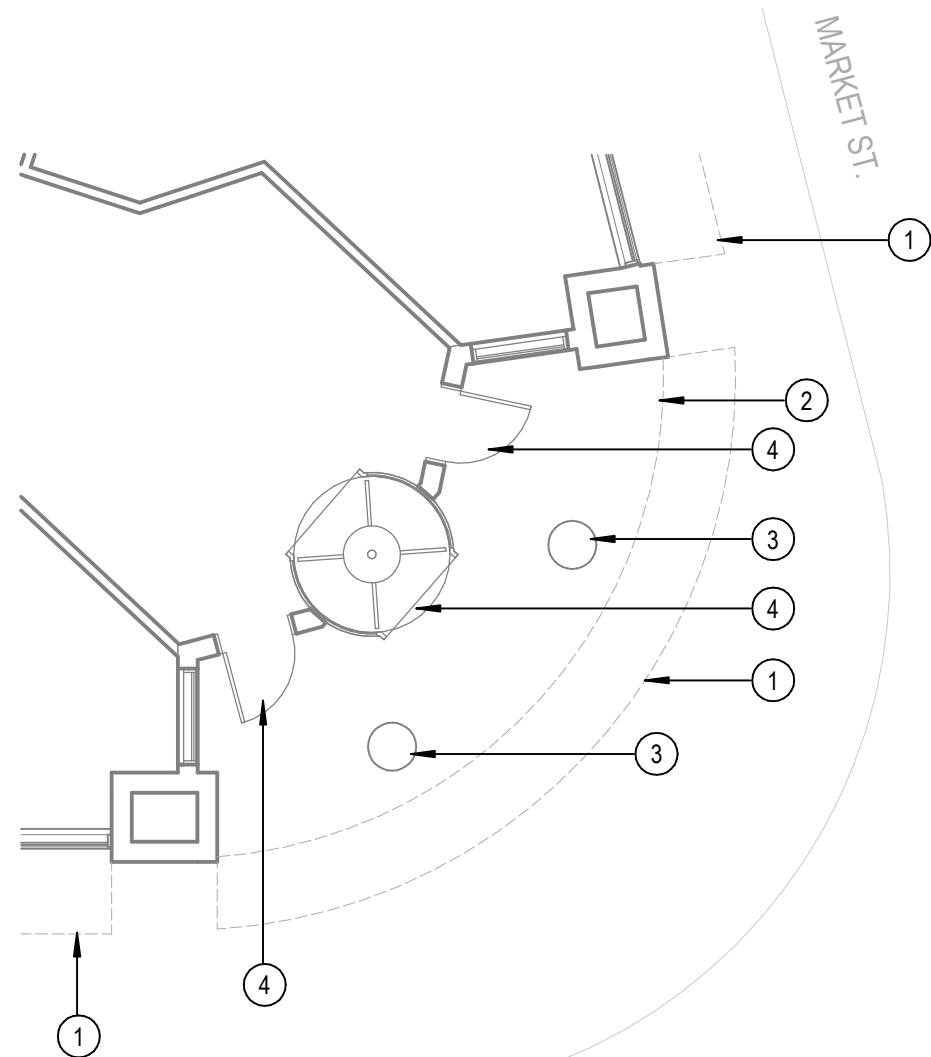
canal5studio.com

LIST OF DRAWINGS

COVER

A00.1 - FLOOR PLANS-EXISTING & PROPOSED
A00.2 - ELEVATIONS
A00.3 - ELEVATIONS
A00.4 - ELEVATIONS
A00.5 - EXTERIOR PERSPECTIVES
A00.6 - EXTERIOR PERSPECTIVES
A00.7 - EXTERIOR PERSPECTIVES

THIS DRAWING IS THE PROPERTY OF CANAL 5 STUDIO AND IS NOT
TO BE COPIED OR REPRODUCED IN PART OR WHOLE.
2020 © CANAL 5 STUDIO

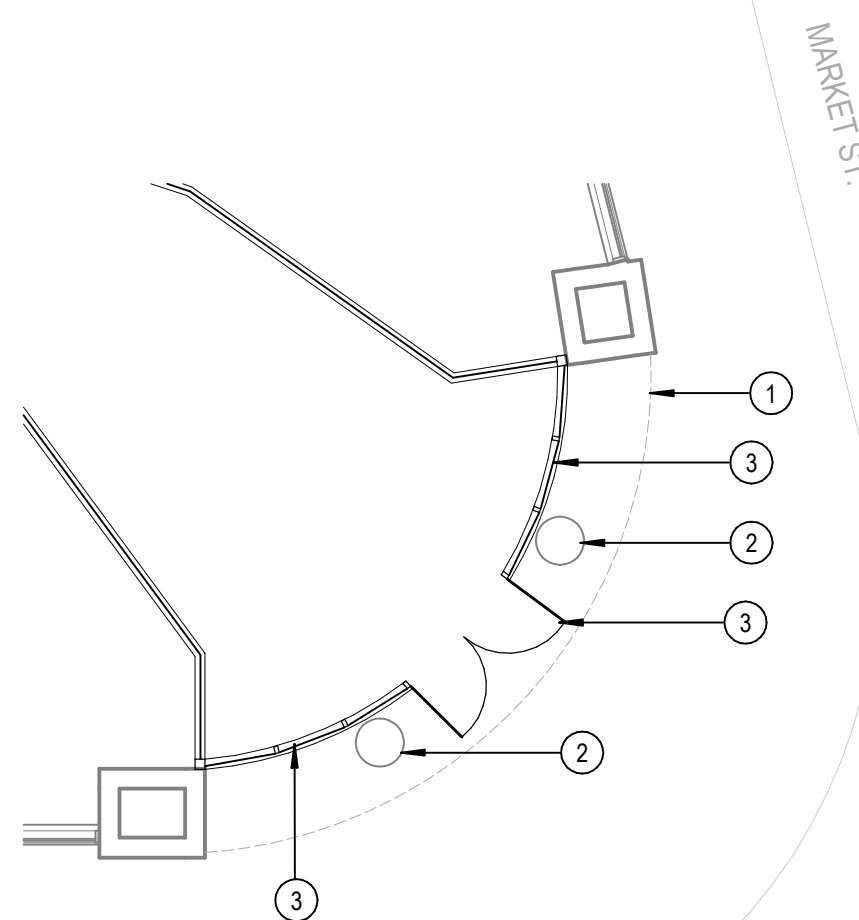


HANOVER ST.

1 FLOOR PLAN-EXISTING CONDITIONS
1/8" = 1'-0"

KEY-EXISTING CONDITIONS

- ① EXISTING CANOPY TO BE REMOVED
- ② EXISTING SOFFIT ABOVE
- ③ EXISTING COLUMN COVER TO BE REMOVED
- ④ EXISTING STOREFRONT/ENTRY TO BE REMOVED



HANOVER ST.

2 FLOOR PLAN-PROPOSED
1/8" = 1'-0"

KEY-PROPOSED PLAN

- ① EXISTING SOFFIT ABOVE
- ② EXISTING COLUMN WITH NEW STAINLESS STEEL COVER
- ③ NEW GLASS/STAINLESS STEEL ENTRY

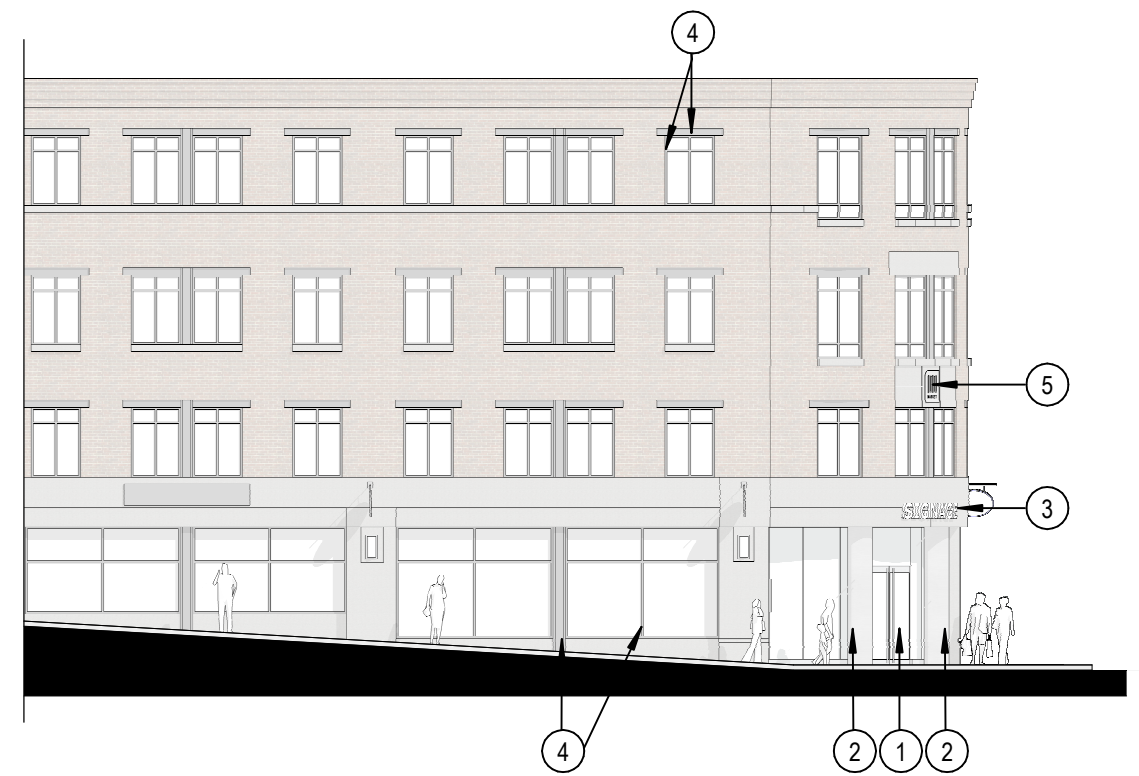




2 **ELEVATION-HANOVER ST. EXISTING**
1/16" = 1'-0"

KEY-EXISTING CONDITIONS

- ① EXISTING CANOPY TO BE REMOVED
- ② EXISTING COLUMN COVER TO BE REMOVED
- ③ EXISTING STOREFRONT/ENTRY TO BE REMOVED
- ④ EXISTING '100 MARKET' SIGN TO BE REMOVED



1 **ELEVATION-HANOVER ST. PROPOSED**
1/16" = 1'-0"

KEY-PROPOSED ELEVATION

- ① NEW GLASS/STAINLESS STEEL ENTRY
- ② EXISTING COLUMN WITH NEW STAINLESS STEEL COVER
- ③ NEW SIGNAGE ALONG CURVE
- ④ ALL EXISTING WINDOW FRAMES/MULLIONS PAINTED BLACK
- ⑤ NEW STAINLESS STEEL '100 MARKET' SIGN



1 ELEVATION-MARKET & HANOVER ST.
EXISTING
1/16" = 1'-0"

KEY-EXISTING CONDITIONS

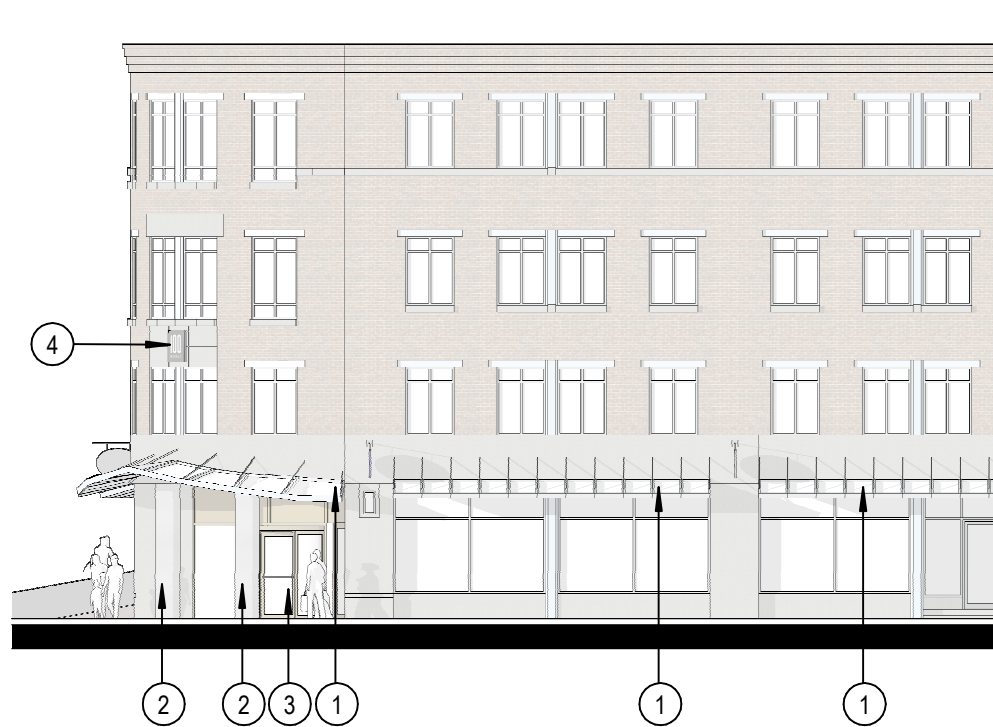
- ① EXISTING CANOPY TO BE REMOVED
- ② EXISTING COLUMN COVER TO BE REMOVED
- ③ EXISTING STOREFRONT/ENTRY TO BE REMOVED
- ④ EXISTING '100 MARKET' SIGN TO BE REMOVED



2 ELEVATION-MARKET & HANOVER ST.
PROPOSED
1/16" = 1'-0"

KEY-PROPOSED ELEVATION

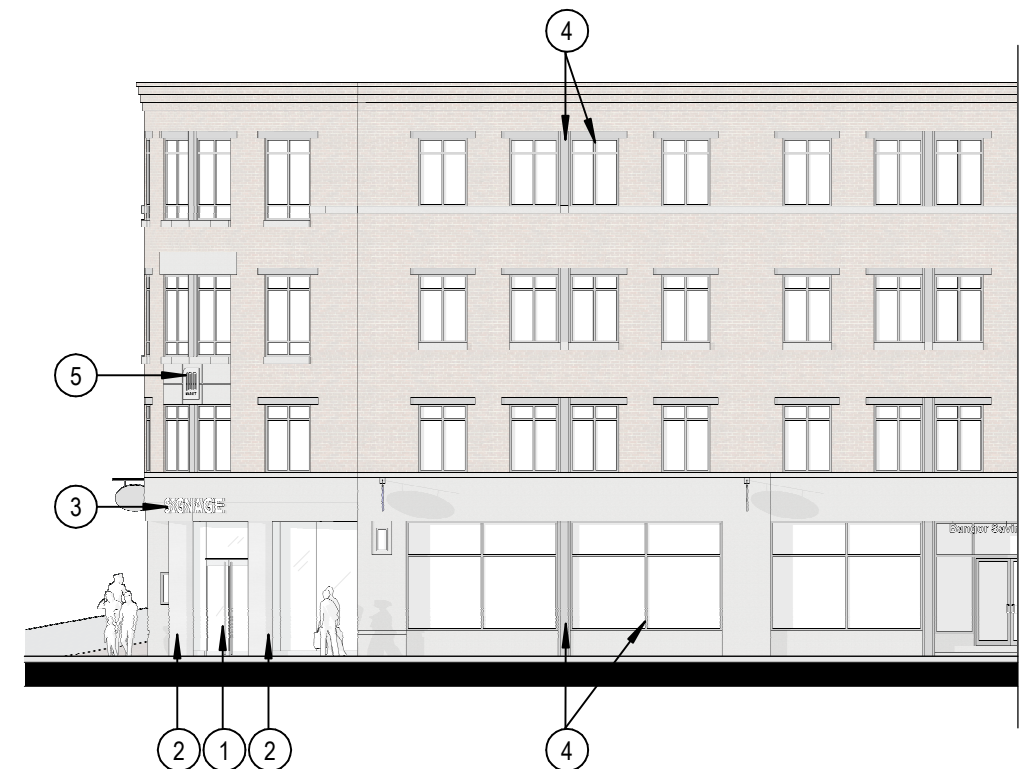
- ① NEW GLASS/STAINLESS STEEL ENTRY
- ② EXISTING COLUMN WITH NEW STAINLESS STEEL COVER
- ③ NEW SIGNAGE ALONG CURVE
- ④ ALL EXISTING WINDOW FRAMES/MULLIONS PAINTED BLACK
- ⑤ NEW STAINLESS STEEL '100 MARKET' SIGN



1 ELEVATION-MARKET ST. EXISTING
1/16" = 1'-0"

KEY-EXISTING CONDITIONS

- ① EXISTING CANOPY TO BE REMOVED
- ② EXISTING COLUMN COVER TO BE REMOVED
- ③ EXISTING STOREFRONT/ENTRY TO BE REMOVED
- ④ EXISTING '100 MARKET' SIGN TO BE REMOVED



2 ELEVATION-MARKET ST. PROPOSED
1/16" = 1'-0"

KEY-PROPOSED ELEVATION

- ① NEW GLASS/STAINLESS STEEL ENTRY
- ② EXISTING COLUMN WITH NEW STAINLESS STEEL COVER
- ③ NEW SIGNAGE ALONG CURVE
- ④ ALL EXISTING WINDOW FRAMES/MULLIONS PAINTED BLACK
- ⑤ NEW STAINLESS STEEL '100 MARKET' SIGN



2 PERSPECTIVE-HANOVER ST.
EXISTING
1/16" = 1'-0"



1 PERSPECTIVE-HANOVER ST.
PROPOSED
1/16" = 1'-0"



1 PERSPECTIVE-HANOVER &
MARKET-EXISTING
1/16" = 1'-0"



2 PERSPECTIVE-HANOVER &
MARKET-PROPOSED



1 PERSPECTIVE-MARKET ST.
EXISTING
1/16" = 1'-0"



2 PERSPECTIVE-MARKET ST.
PROPOSED
1/16" = 1'-0"