



SPRINGER'S JEWELERS PORTSMOUTH EXTERIOR RENOVATIONS

100 MARKET STREET, PORTSMOUTH, NH

HDC WORK SESSION

NOVEMBER 10, 2020

CANAL 5 STUDIO
Architecture / Planning / Interior Design

207 553 2115
One Canal Plaza, Suite 888
Portland, Maine 04101

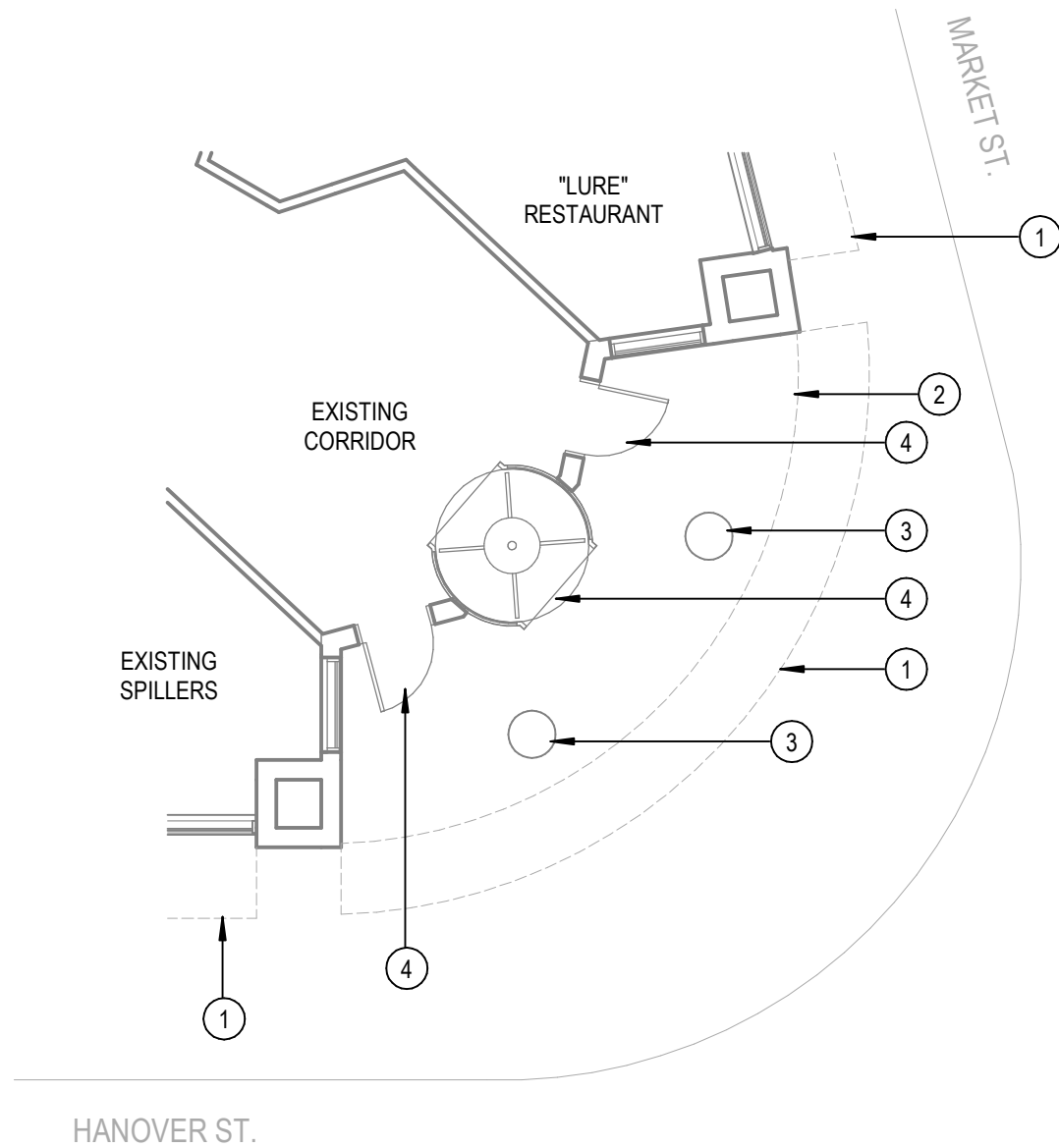
canal5studio.com

LIST OF DRAWINGS

COVER

A1 - FLOOR PLANS-EXISTING & PROPOSED
A2 - ELEVATIONS
A3 - ELEVATIONS
A4 - ELEVATIONS
A5 - EXTERIOR PERSPECTIVE

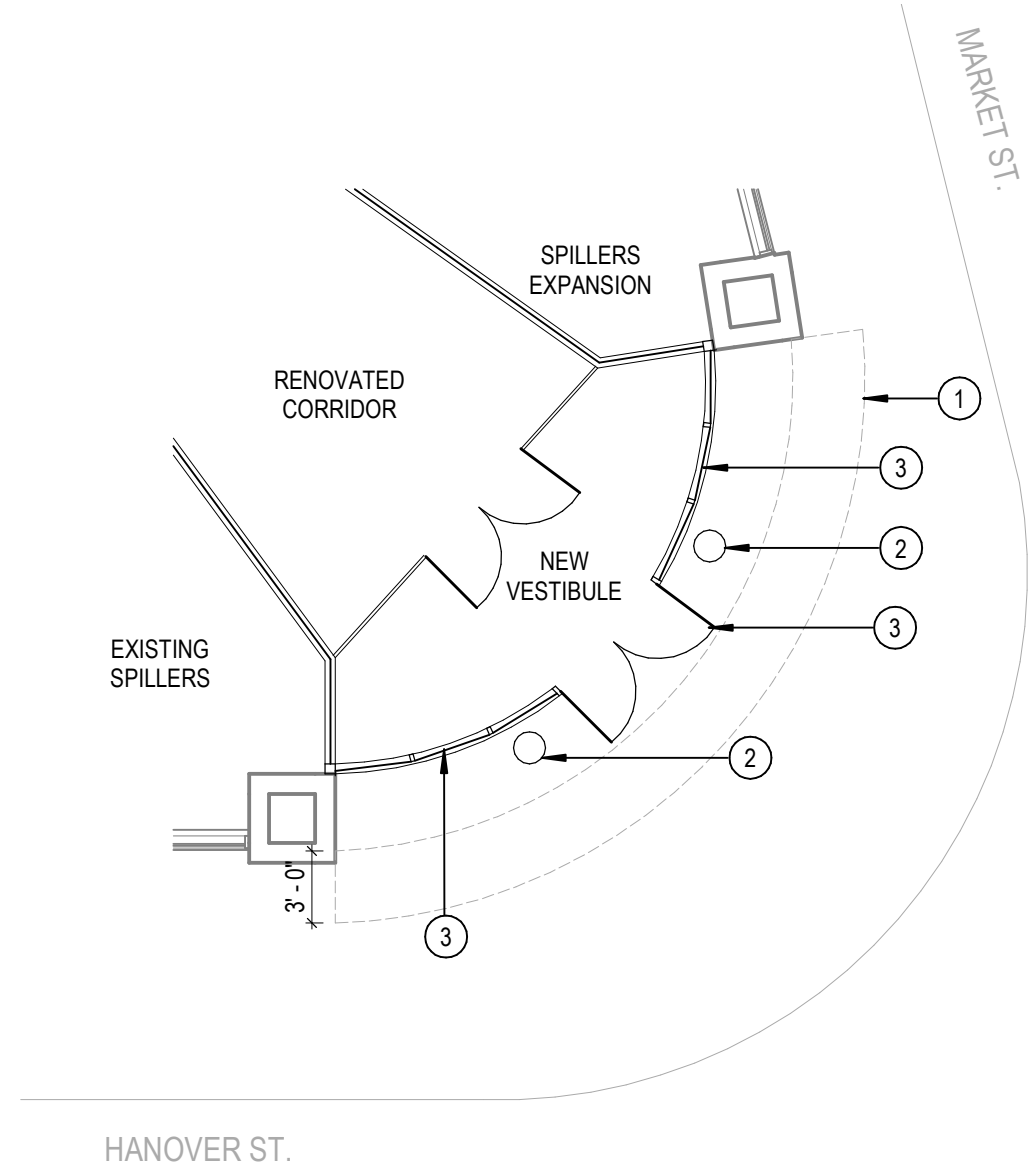
THIS DRAWING IS THE PROPERTY OF CANAL 5 STUDIO AND IS NOT
TO BE COPIED OR REPRODUCED IN PART OR WHOLE.
2020 © CANAL 5 STUDIO



1 FLOOR PLAN- EXISTING CONDITIONS
1/8" = 1'-0"

KEY-EXISTING CONDITIONS

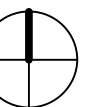
- ① EXISTING CANOPY TO BE REMOVED
- ② EXISTING SOFFIT ABOVE
- ③ EXISTING COLUMN COVER TO BE REMOVED
- ④ EXISTING STOREFRONT/ENTRY TO BE REMOVED

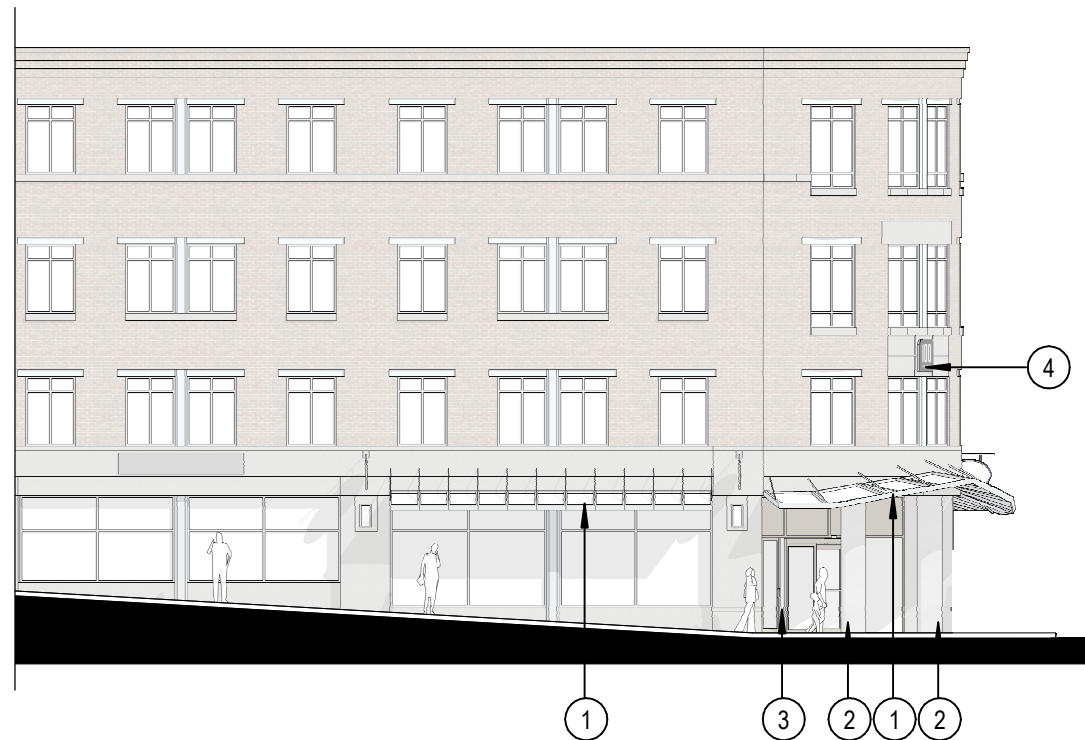


2 FLOOR PLAN-PROPOSED-
1/8" = 1'-0"

KEY-PROPOSED PLAN

- ① NEW CANOPY ABOVE
- ② EXISTING COLUMN WITH NEW STAINLESS STEEL COVER
- ③ NEW GLASS/STAINLESS STEEL ENTRY

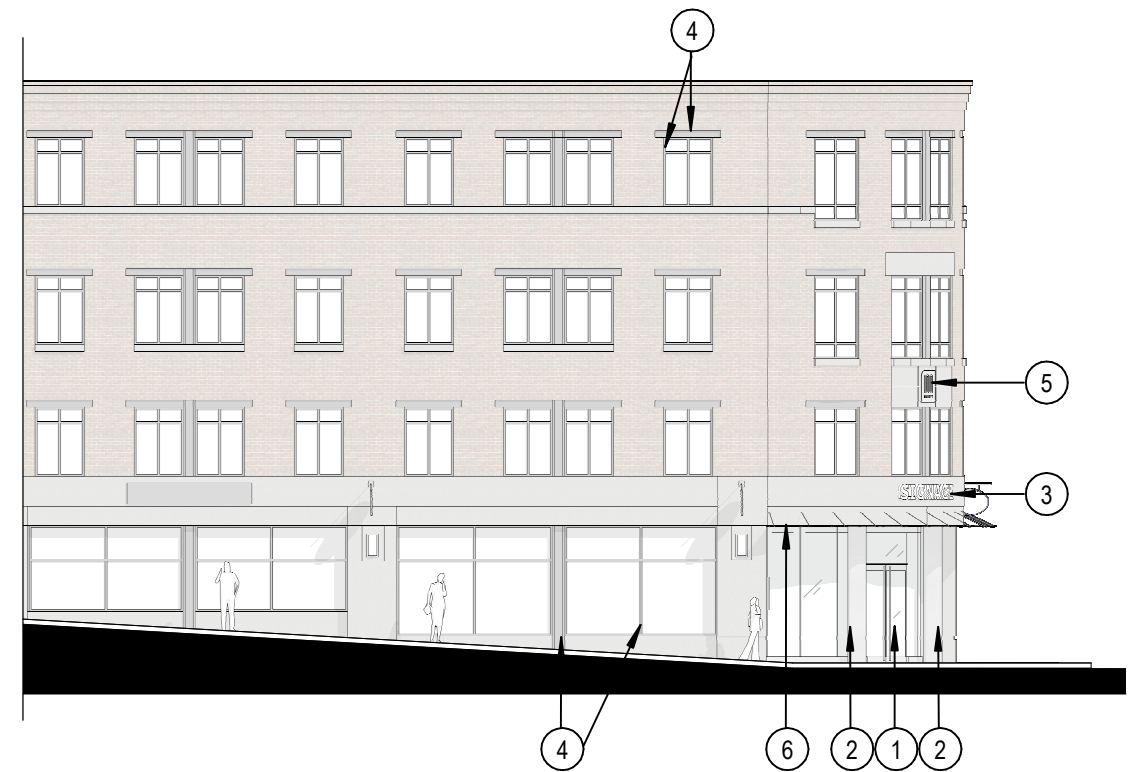




1 ELEVATION- HANOVER ST. EXISTING
1/16" = 1'-0"

KEY-EXISTING CONDITIONS

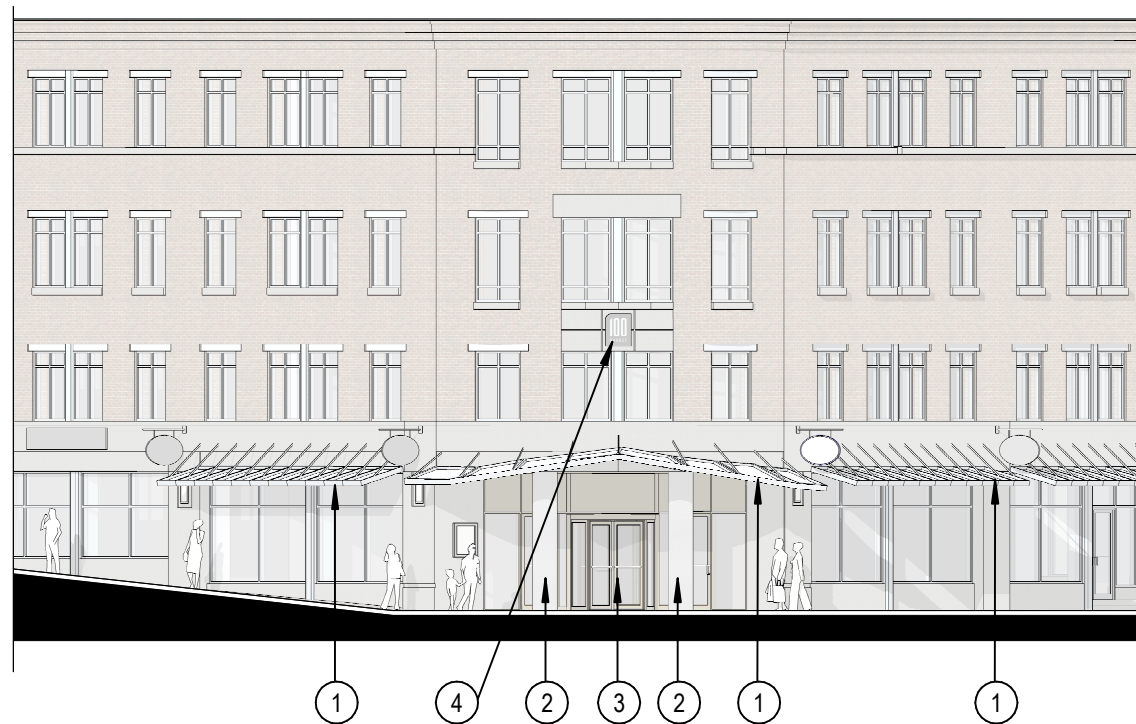
- ① EXISTING CANOPY TO BE REMOVED
- ② EXISTING COLUMN COVER TO BE REMOVED
- ③ EXISTING STOREFRONT/ENTRY TO BE REMOVED
- ④ EXISTING '100 MARKET' SIGN TO BE REMOVED



2 ELEVATION-HANOVER ST. PROPOSED-
1/16" = 1'-0"

KEY-PROPOSED ELEVATION

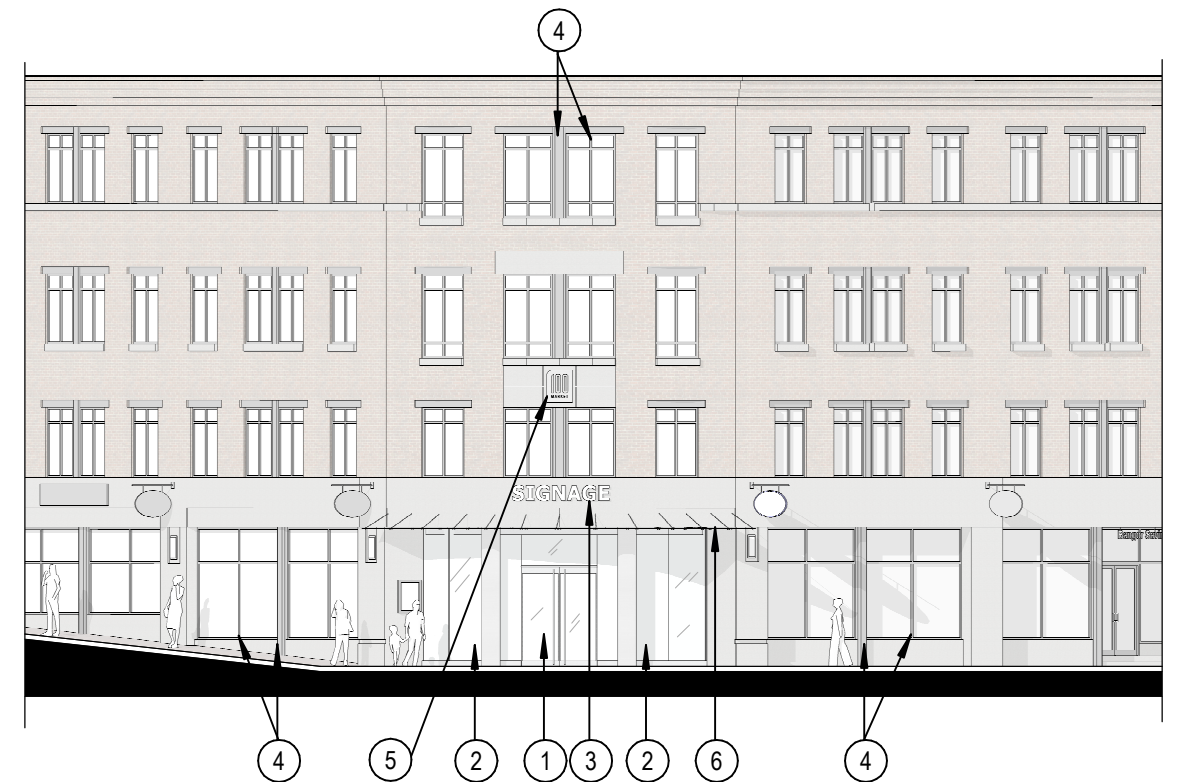
- ① NEW GLASS/STAINLESS STEEL ENTRY
- ② EXISTING COLUMN WITH NEW STAINLESS STEEL COVER
- ③ NEW SIGNAGE ALONG CURVE
- ④ ALL EXISTING WINDOW FRAMES/MULLIONS PAINTED BLACK
- ⑤ NEW STAINLESS STEEL '100 MARKET' SIGN
- ⑥ NEW GLASS & STAINLESS STEEL CANOPY



1 ELEVATION- MARKET & HANOVER ST.
 EXISTING
 1/16" = 1'-0"

KEY-EXISTING CONDITIONS

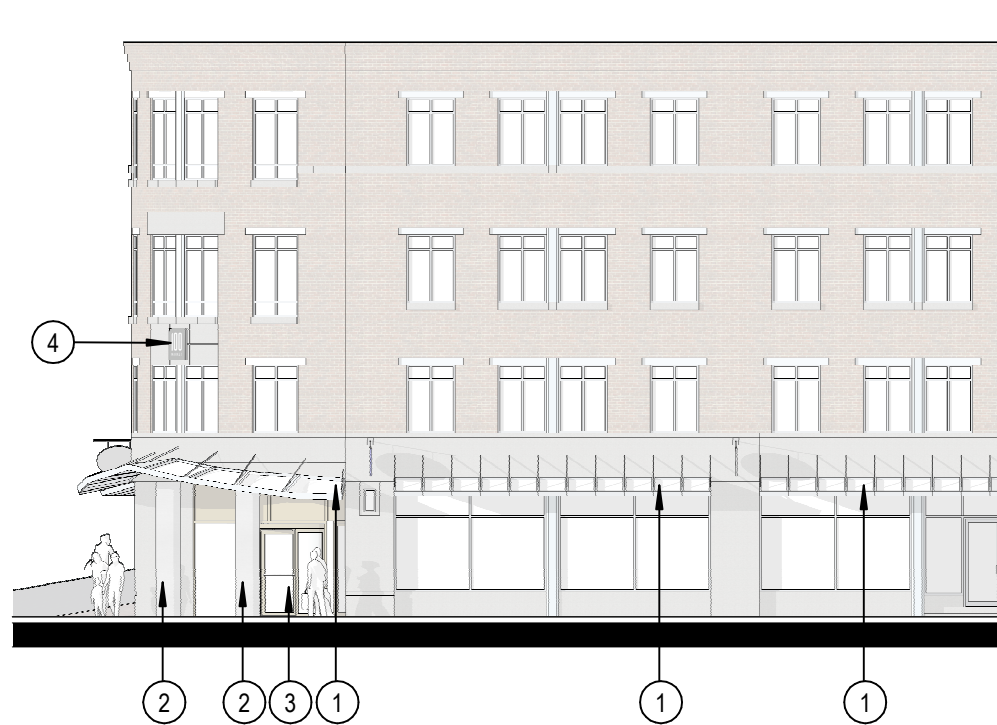
- ① EXISTING CANOPY TO BE REMOVED
- ② EXISTING COLUMN COVER TO BE REMOVED
- ③ EXISTING STOREFRONT/ENTRY TO BE REMOVED
- ④ EXISTING '100 MARKET' SIGN TO BE REMOVED



2 ELEVATION-MARKET & HANOVER ST.
 PROPOSED-
 1/16" = 1'-0"

KEY-PROPOSED ELEVATION

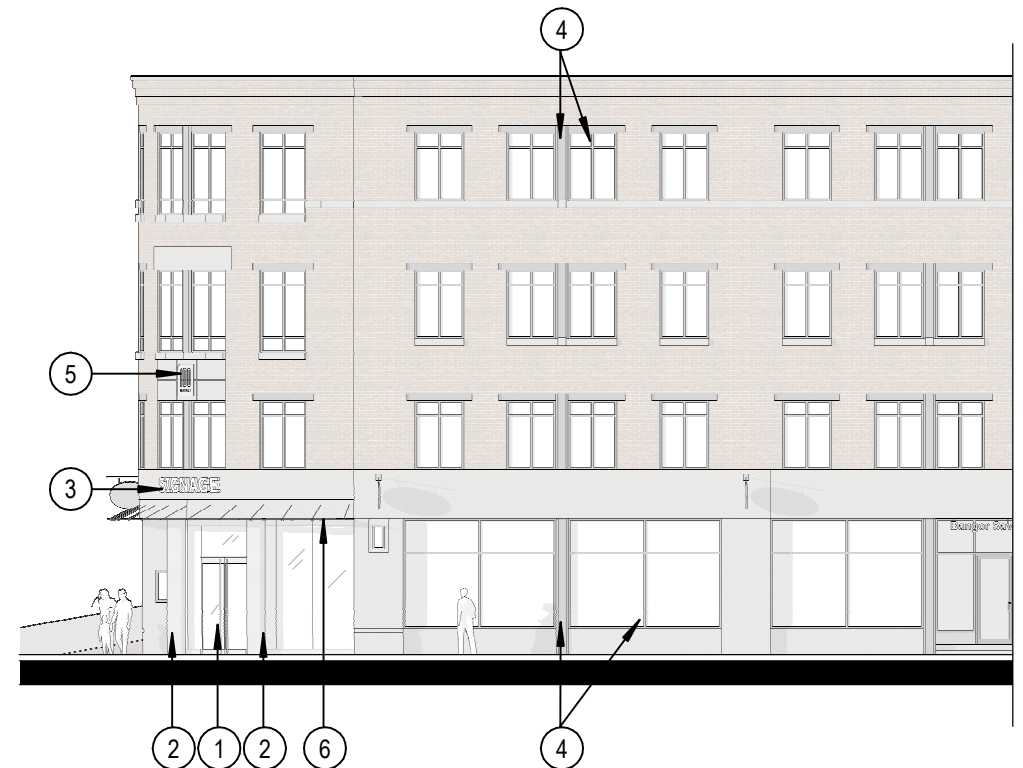
- ① NEW GLASS/STAINLESS STEEL ENTRY
- ② EXISTING COLUMN WITH NEW STAINLESS STEEL COVER
- ③ NEW SIGNAGE ALONG CURVE
- ④ ALL EXISTING WINDOW FRAMES/MULLIONS PAINTED BLACK
- ⑤ NEW STAINLESS STEEL '100 MARKET' SIGN
- ⑥ NEW GLASS & STAINLESS STEEL CANOPY



1 ELEVATION- MARKET ST. EXISTING
1/16" = 1'-0"

KEY-EXISTING CONDITIONS

- ① EXISTING CANOPY TO BE REMOVED
- ② EXISTING COLUMN COVER TO BE REMOVED
- ③ EXISTING STOREFRONT/ENTRY TO BE REMOVED
- ④ EXISTING '100 MARKET' SIGN TO BE REMOVED



2 ELEVATION-MARKET ST. PROPOSED-
1/16" = 1'-0"

KEY-PROPOSED ELEVATION

- ① NEW GLASS/STAINLESS STEEL ENTRY
- ② EXISTING COLUMN WITH NEW STAINLESS STEEL COVER
- ③ NEW SIGNAGE ALONG CURVE
- ④ ALL EXISTING WINDOW FRAMES/MULLIONS PAINTED BLACK
- ⑤ NEW STAINLESS STEEL '100 MARKET' SIGN
- ⑥ NEW GLASS & STAINLESS STEEL CANOPY



1 PERSPECTIVE- HANOVER ST.
EXISTING
1/16" = 1'-0"



2 PERSPECTIVE-HANOVER ST.
PROPOSED-
1/16" = 1'-0"