



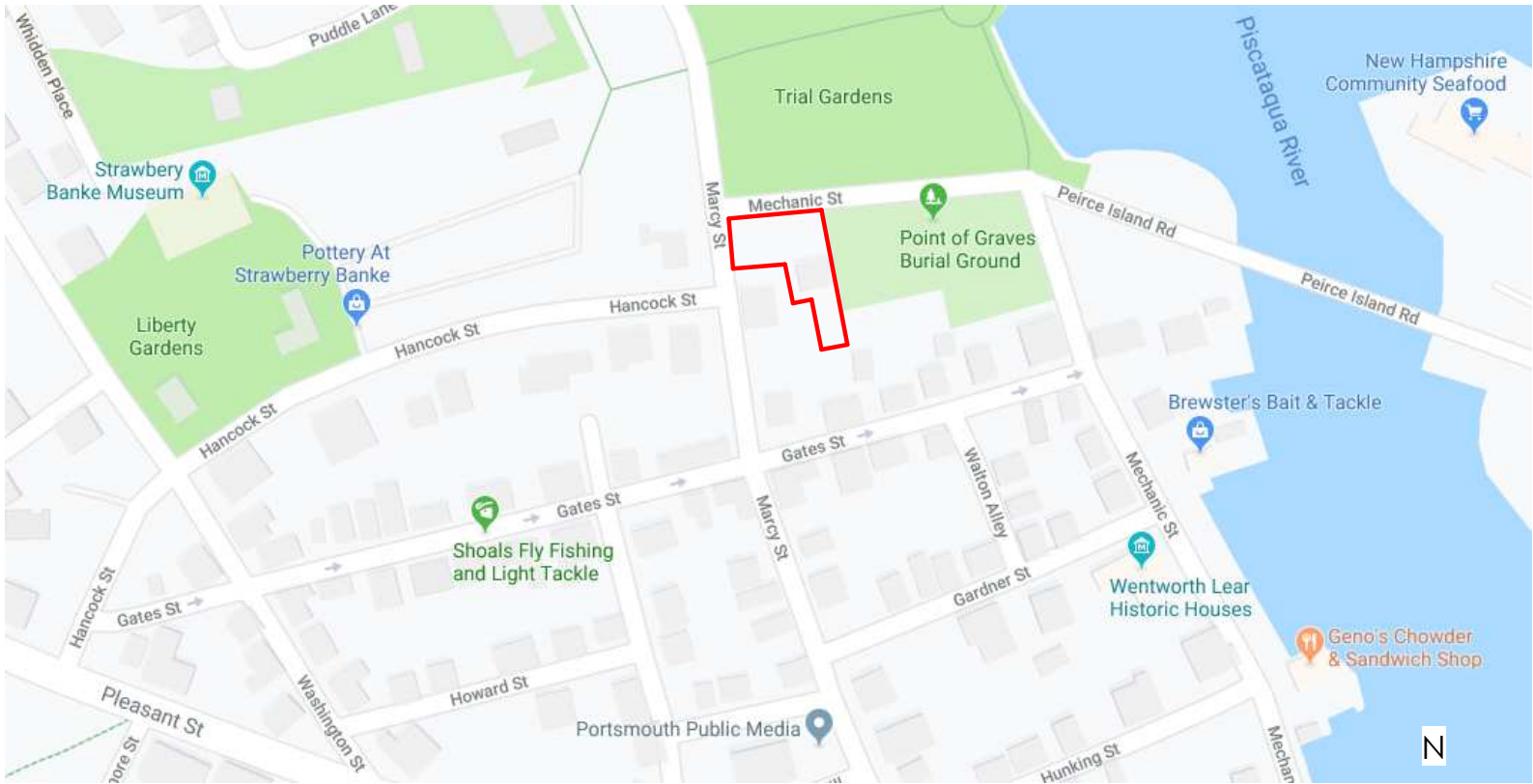
1 [VIEW FROM MECHANIC STREET](#)



2 [VIEW FROM CEMETERY](#)



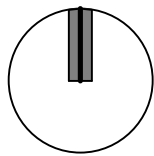
3 [BACKYARD SHED](#)



4 [SITE OUTLINE](#)



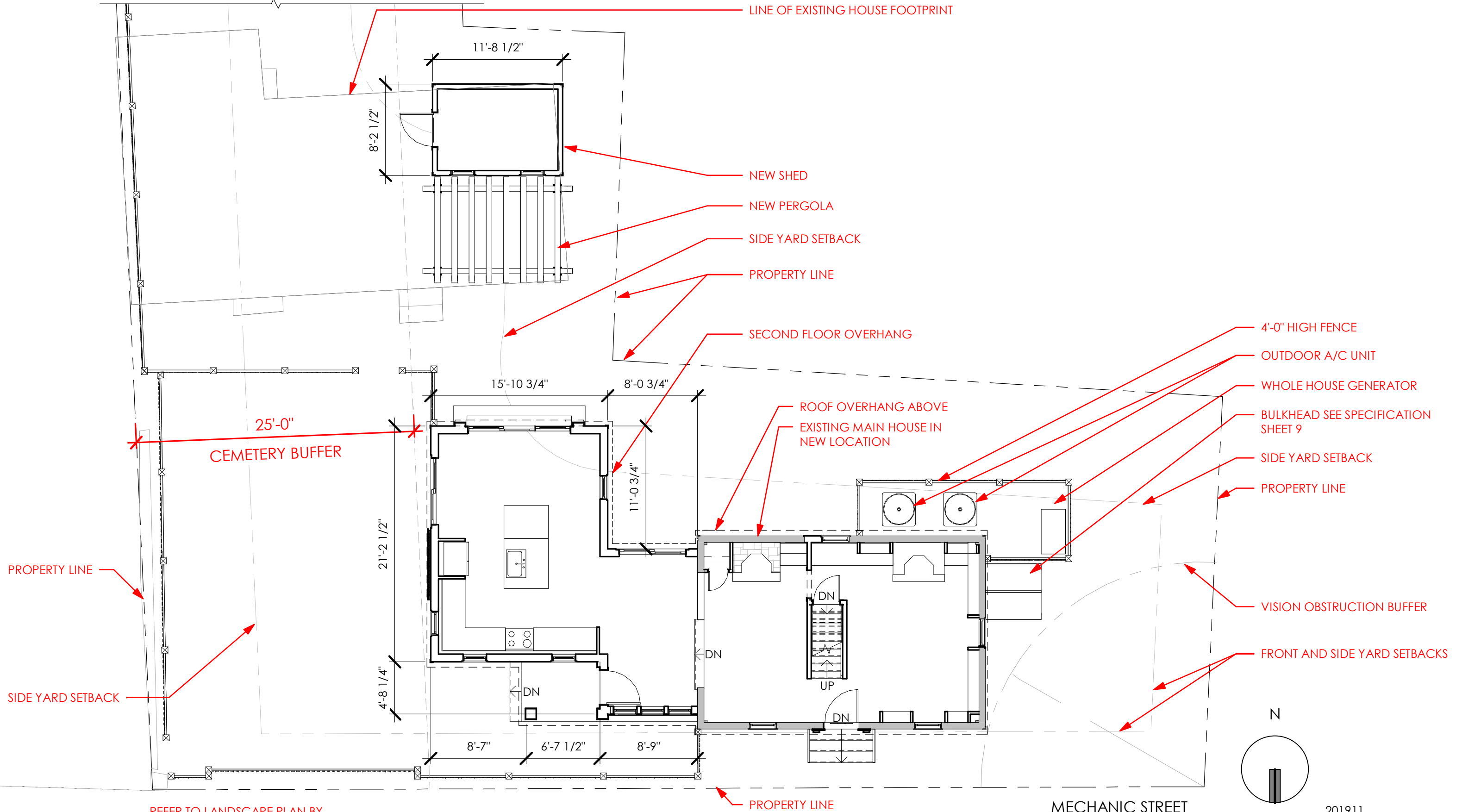
5 [VIEW FROM BACKYARD](#)



PROPOSED RENOVATIONS & ADDITIONS FOR THE
COPELAND RESIDENCE
 14 MECHANIC STREET
 PORTSMOUTH, NH

CONTEXT PHOTOS & LOCUS PLAN

SHEET **1** OF 10
 MARCH 4, 2020



REFER TO LANDSCAPE PLAN BY
WOODBURN & COMPANY FOR ALL
HARDSCAPE AND LANDSCAPE DESIGN.

COPELAND RESIDENCE

14 MECHANIC STREET
PORTSMOUTH, NH

PROPOSED SITE PLAN

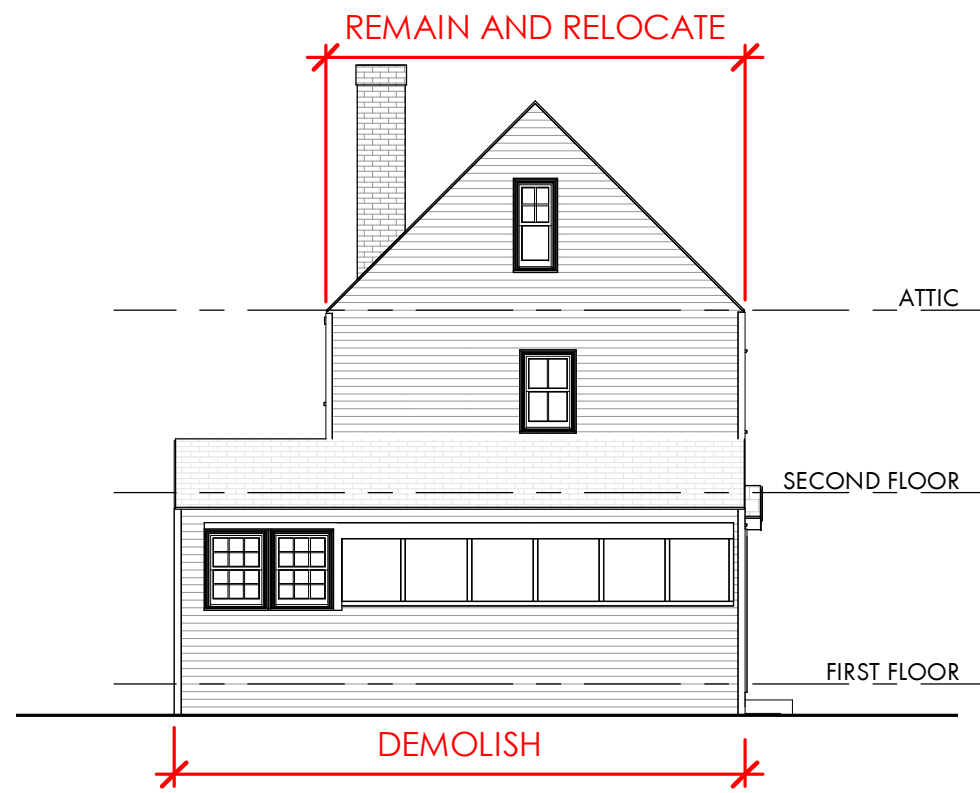
1/8" = 1'-0"

SHEET **2** OF 10

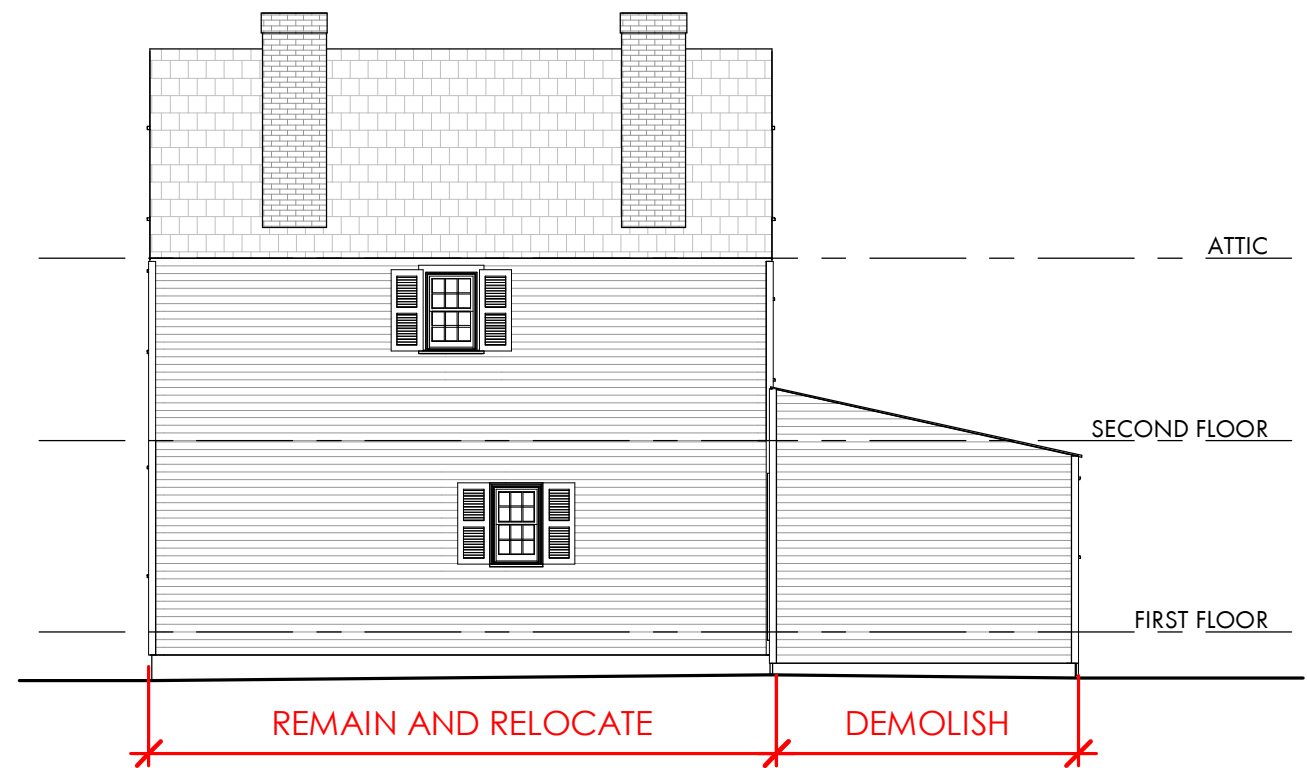
MARCH 4, 2020

201911

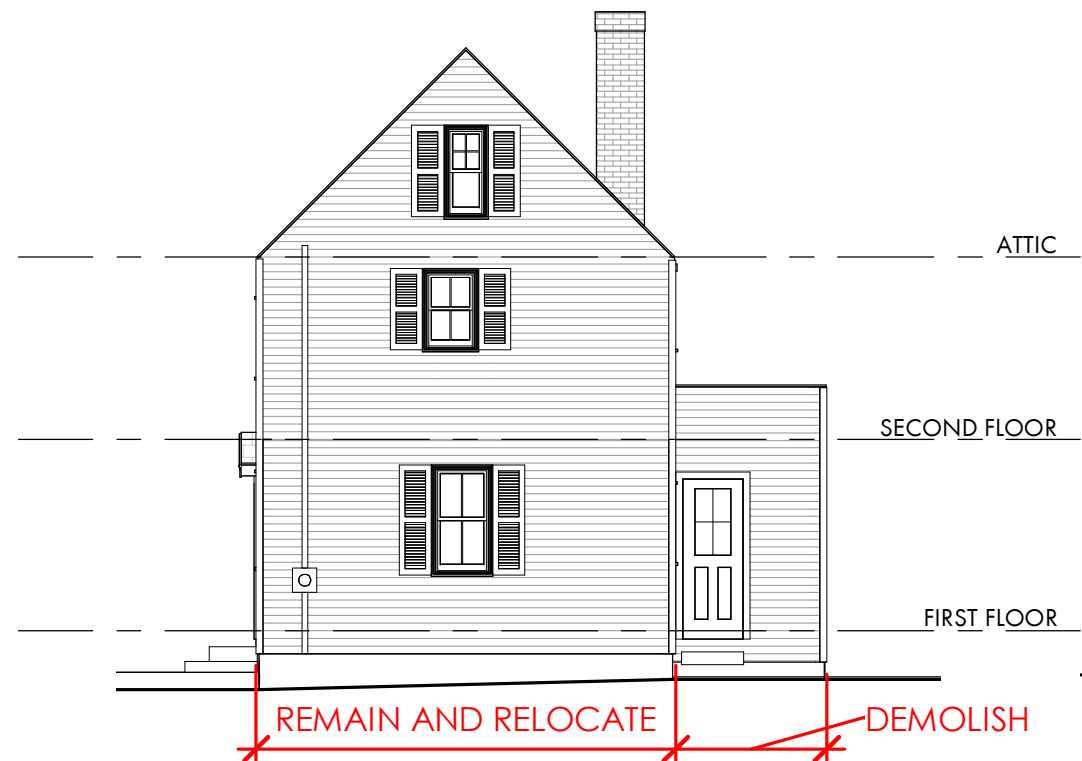
D|M|A
DESTEFANO
MAUGEL
ARCHITECTS



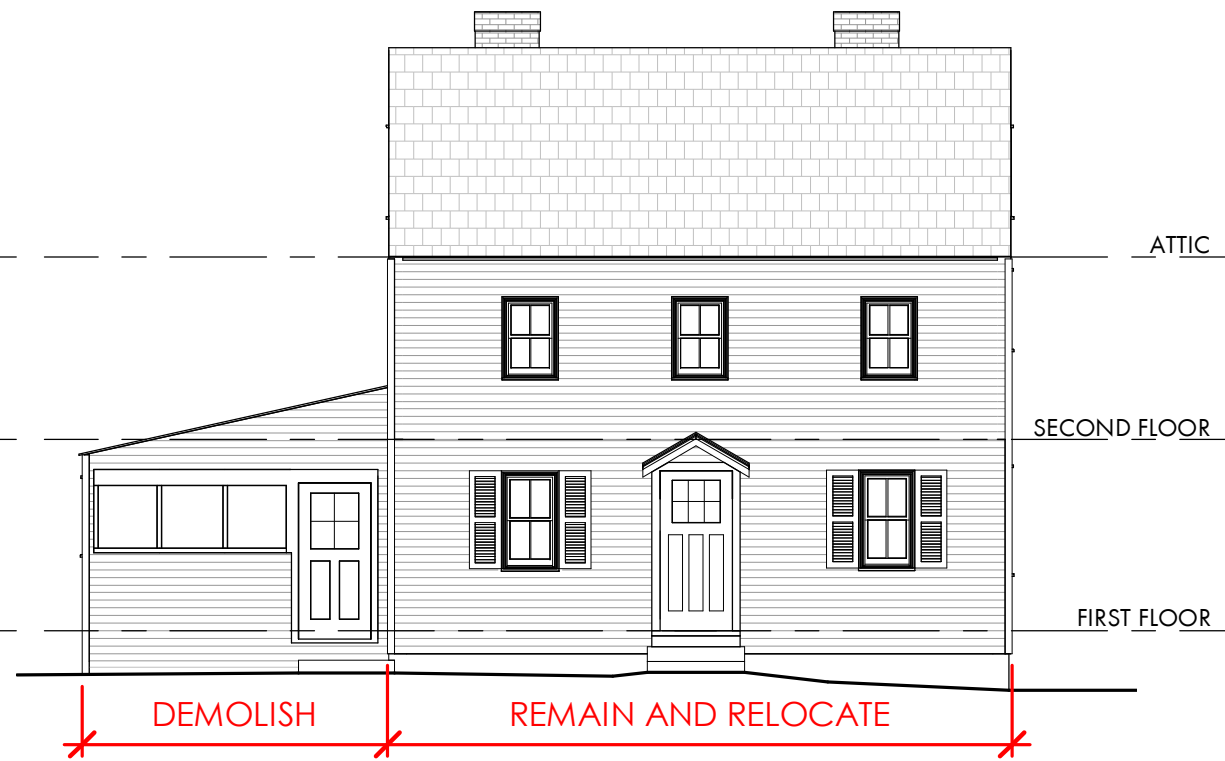
EXISTING EAST ELEVATION



EXISTING SOUTH ELEVATION



EXISTING WEST ELEVATION



EXISTING NORTH ELEVATION

COPELAND RESIDENCE

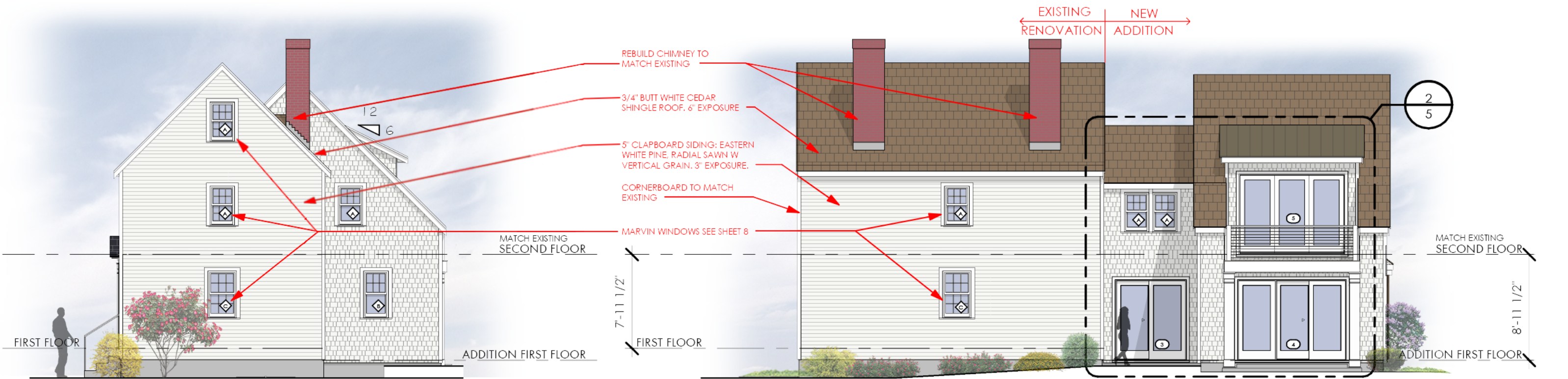
14 MECHANIC STREET
PORTSMOUTH, NH

EXISTING ELEVATIONS

1/8" = 1'-0"

SHEET **3** OF 10

MARCH 4, 2020



PROPOSED WEST ELEVATION

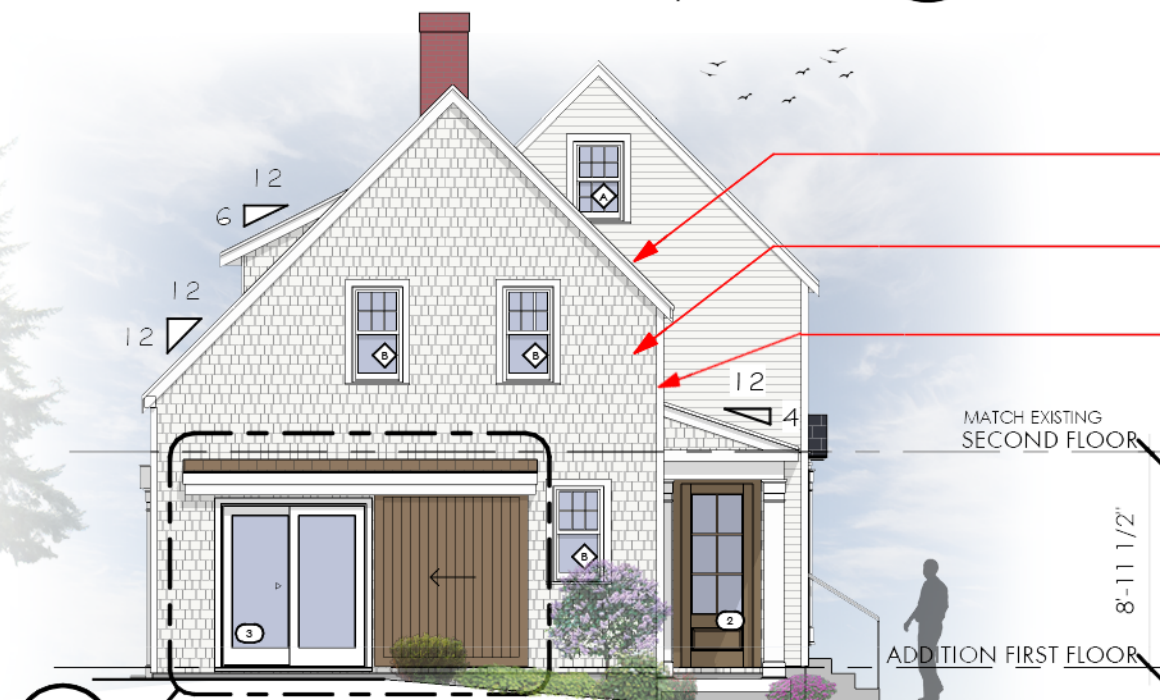
1/8" = 1'-0"

4

PROPOSED SOUTH ELEVATION

1/8" = 1'-0"

2



PROPOSED EAST ELEVATION

1/8" = 1'-0"

3



PROPOSED FRONT ELEVATION

1/8" = 1'-0"

1

COPELAND RESIDENCE

14 MECHANIC STREET
PORTSMOUTH, NH

PROPOSED ELEVATIONS

1/8" = 1'-0"

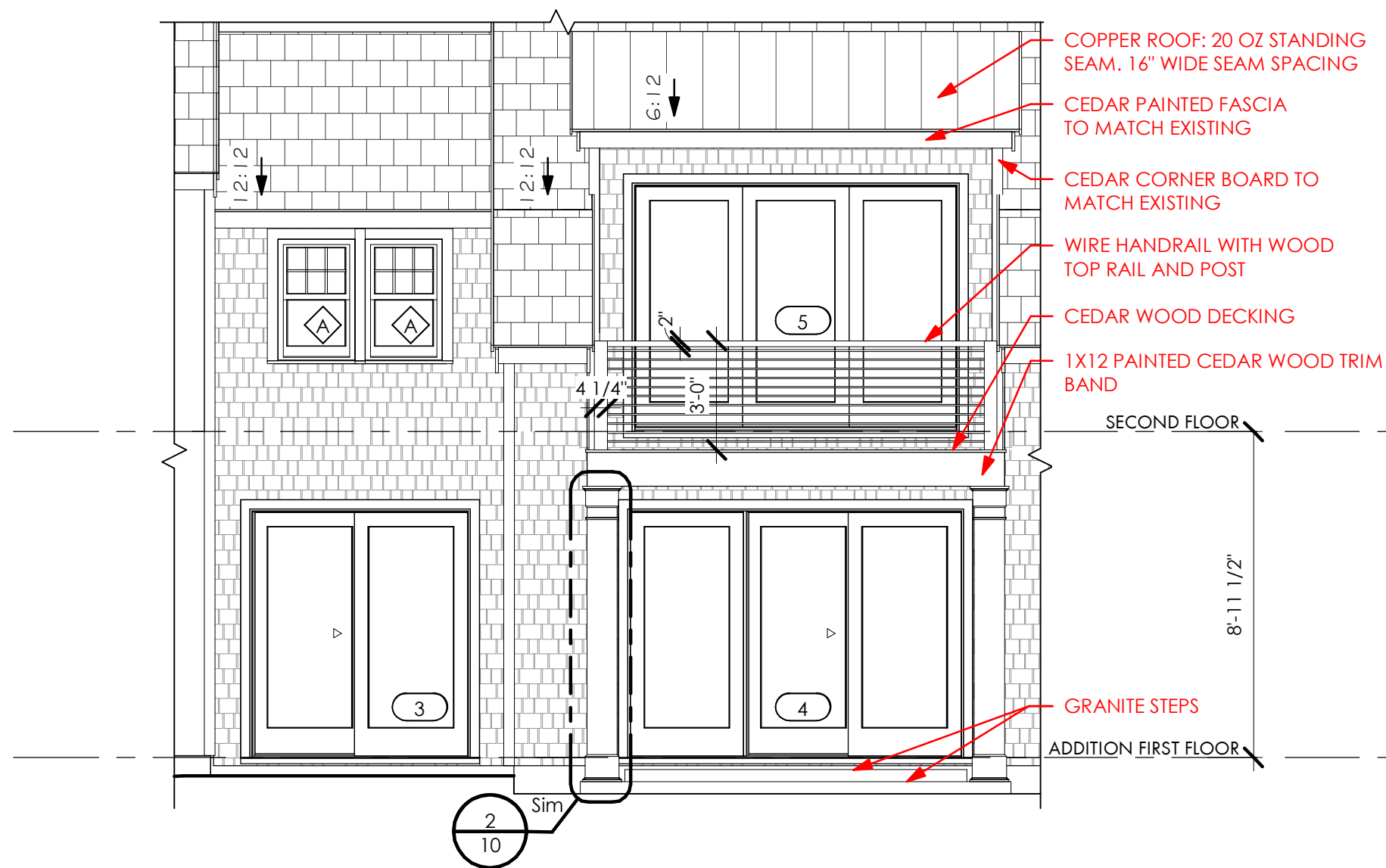
SHEET 4 OF 10

MARCH 4, 2020

201911

D|M|A
DESTEFANO
MAUGEL
ARCHITECTS

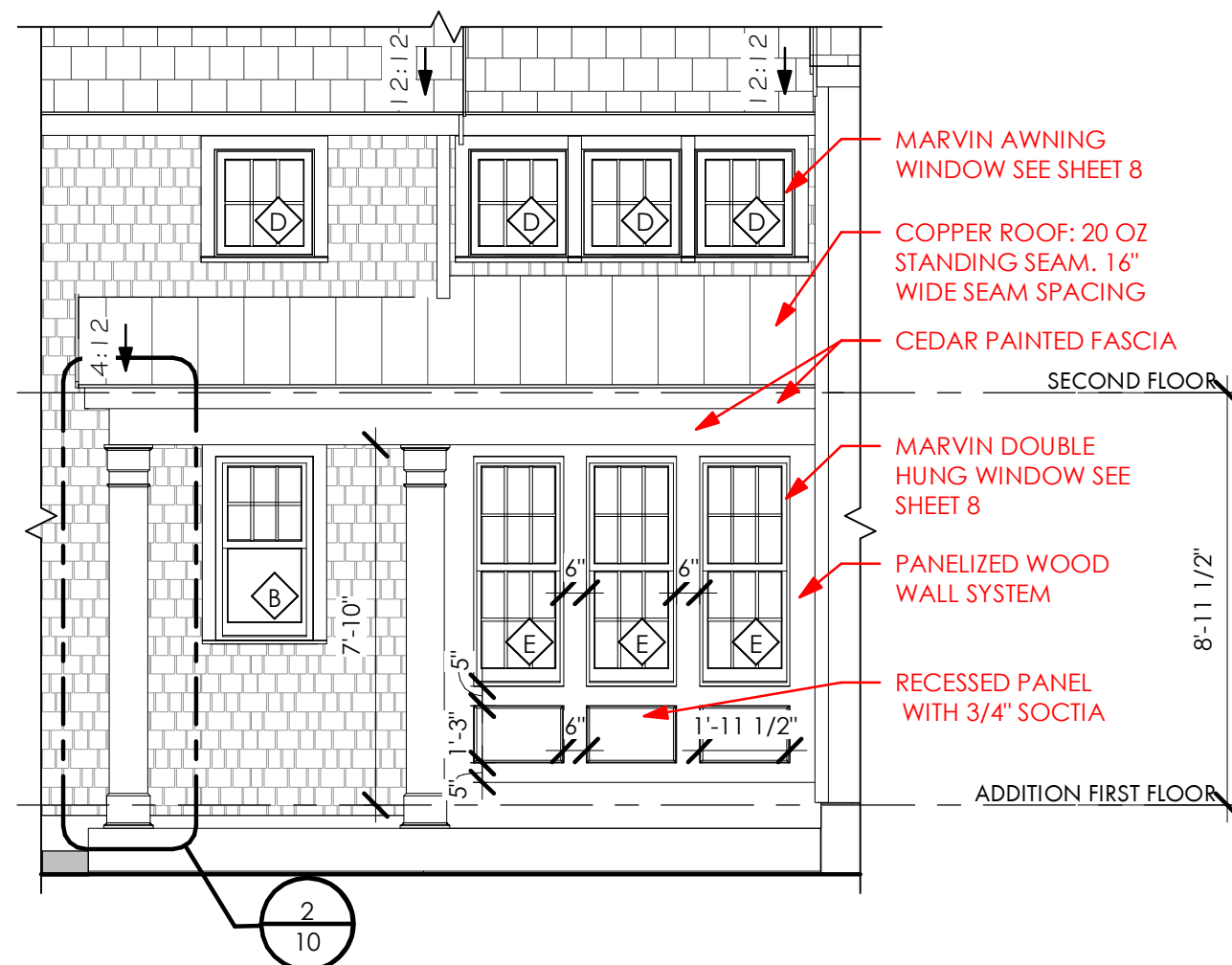
© 2020



ENLARGED ELEVATION AT REAR PORCH

1/4" = 1'-0"

2



ENLARGED ELEVATION OF SIDE ENTRY

1/4" = 1'-0"

1

COPELAND RESIDENCE

14 MECHANIC STREET
PORTSMOUTH, NH

ENLARGED ELEVATIONS

1/4" = 1'-0"

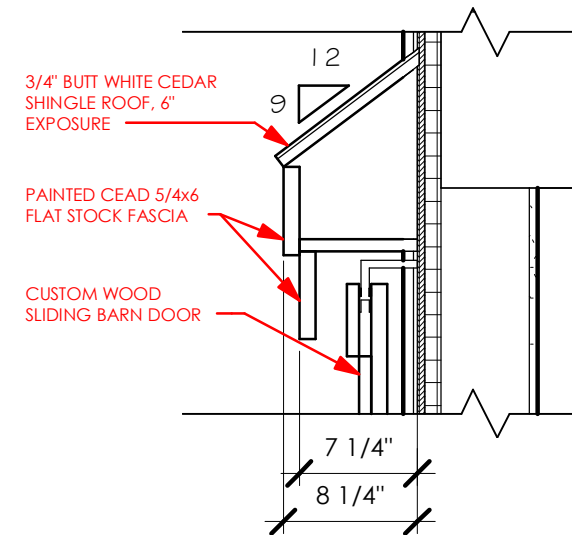
SHEET **5** OF 10

MARCH 4, 2020

201911



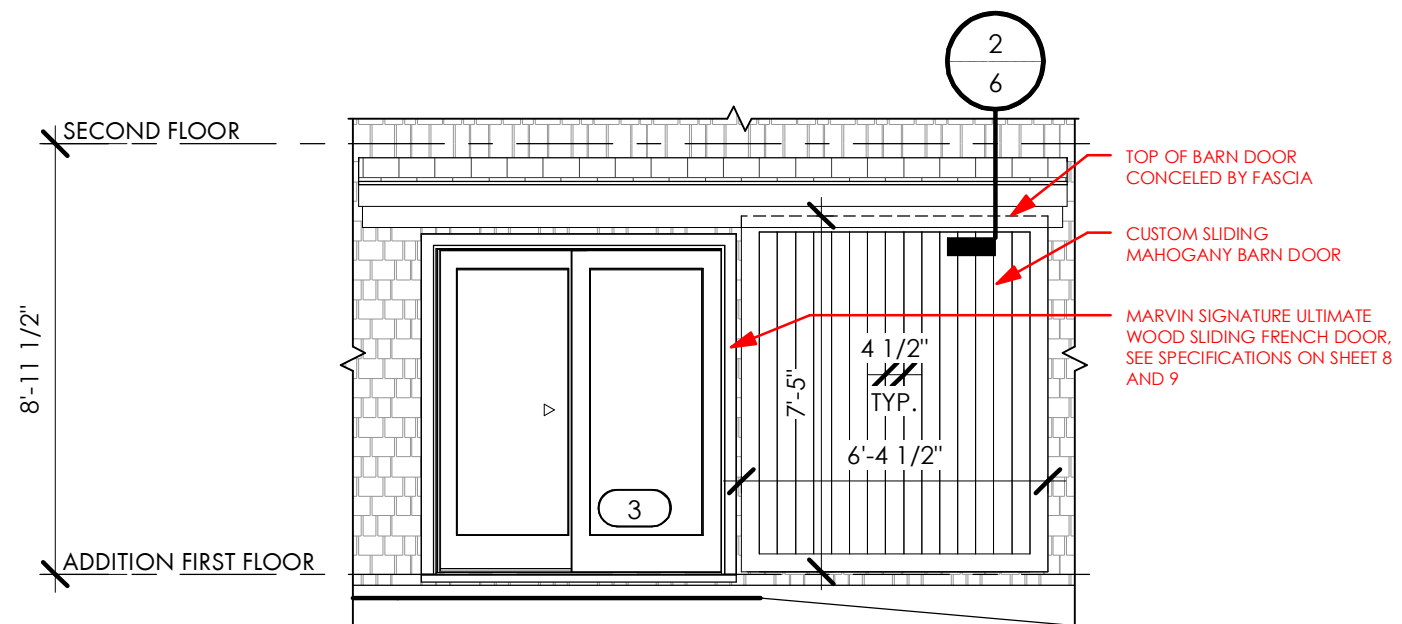
© 2020



EAVE AT BARN DOOR

2

1" = 1'-0"



ENLARGED ELEVATION AT BARN DOOR

1

1/4" = 1'-0"

COPELAND RESIDENCE

14 MECHANIC STREET
PORTSMOUTH, NH

ENLARGED ELEVATIONS

As indicated

SHEET 6 OF 10

MARCH 4, 2020



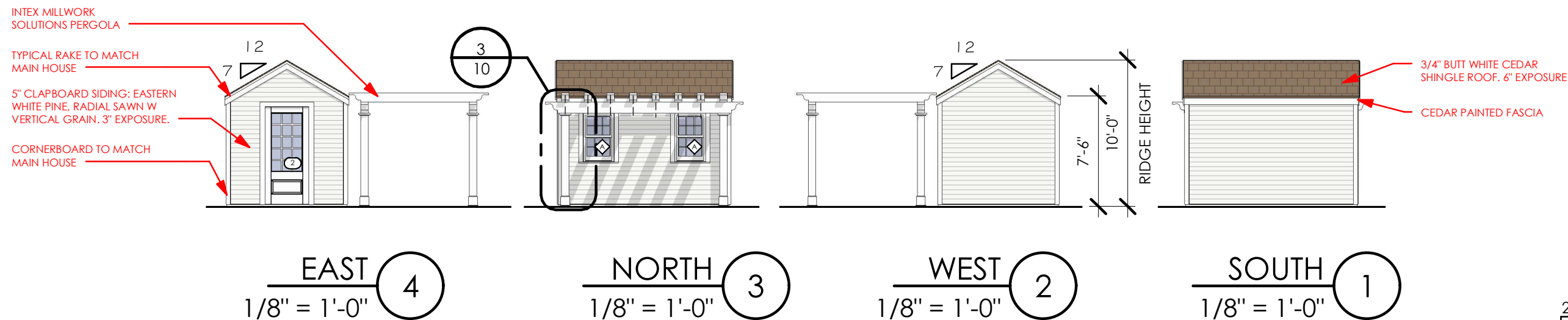
© 2020



PERSEPECTIVE FROM CORNER OF MECHANIC STREET AND MARCY STREET



PERSEPECTIVE FROM MECHANIC STREET



COPELAND RESIDENCE

14 MECHANIC STREET
PORTSMOUTH, NH

SHED ELEVATIONS & PERSPECTIVES

1/8" = 1'-0"

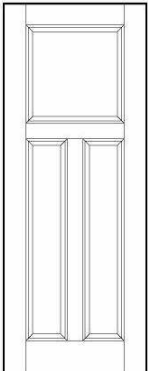
SHEET 7 OF 10

MARCH 4, 2020


← Previous Style

TS3300

Photos



Where to Buy



Mahogany

Next Style →

Series: TruStile (TS) Series

Application: Interior, Exterior

Construction:

M

W

R

Thickness: 1-3/8" **1-3/4"** 2-1/4"

Available Fire-Rating:

20

45

60

90

Fire-rated doors may require modified construction depending on rating. Contact TruStile or your TruStile Representative for details.

DOOR TYPE - 1

WOOD ULTIMATE DOUBLE HUNG

MO (mm)	2-0 1/2 (622)	2-4 1/2 (724)	2-8 1/2 (826)	2-10 1/2 (876)	3-0 1/2 (927)	3-2 1/2 (978)	3-4 1/2 (1029)	3-8 1/2 (1130)	4-0 1/2 (1232)
RO (mm)	1-10 3/8 (568)	2-2 3/8 (670)	2-6 3/8 (772)	2-8 3/8 (822)	2-10 3/8 (873)	3-0 3/8 (924)	3-2 3/8 (975)	3-6 3/8 (1076)	3-10 3/8 (1178)
FS (mm)	1-9 3/8 (543)	2-1 3/8 (645)	2-5 3/8 (746)	2-7 3/8 (797)	2-9 3/8 (848)	2-11 3/8 (899)	3-1 3/8 (949)	3-5 3/8 (1051)	3-9 3/8 (1153)
DLO (mm)	1-2 15/16 (379)	1-6 15/16 (481)	1-10 15/16 (583)	2-0 15/16 (633)	2-2 15/16 (684)	2-4 15/16 (735)	2-6 15/16 (786)	2-10 15/16 (887)	3-2 15/16 (989)

WUDH1612	WUDH2012	WUDH2412	WUDH2612	WUDH2812	WUDH3012	WUDH3212	WUDH3612	WUDH4012
WUDH1614	WUDH2014	WUDH2414	WUDH2614	WUDH2814	WUDH3014	WUDH3214	WUDH3614	WUDH4014
WUDH1616	WUDH2016	WUDH2416	WUDH2616	WUDH2816	WUDH3016	WUDH3216	WUDH3616	WUDH4016
WUDH1618	WUDH2018	WUDH2418	WUDH2618	WUDH2818	WUDH3018	WUDH3218	WUDH3618	WUDH4018
WUDH1620	WUDH2020	WUDH2420	WUDH2620	WUDH2820	WUDH3020	WUDH3220	WUDH3620	WUDH4020
WUDH1622	WUDH2022	WUDH2422	WUDH2622	WUDH2822	WUDH3022	WUDH3222	WUDH3622	WUDH4022

WOOD ULTIMATE DOUBLE HUNG

MO (mm)	2-0 1/2 (622)	2-4 1/2 (724)	2-8 1/2 (826)	2-10 1/2 (876)	3-0 1/2 (927)	3-2 1/2 (978)	3-4 1/2 (1029)	3-8 1/2 (1130)	4-0 1/2 (1232)
RO (mm)	1-10 3/8 (568)	2-2 3/8 (670)	2-6 3/8 (772)	2-8 3/8 (822)	2-10 3/8 (873)	3-0 3/8 (924)	3-2 3/8 (975)	3-6 3/8 (1076)	3-10 3/8 (1178)
FS (mm)	1-9 3/8 (543)	2-1 3/8 (645)	2-5 3/8 (746)	2-7 3/8 (797)	2-9 3/8 (848)	2-11 3/8 (899)	3-1 3/8 (949)	3-5 3/8 (1051)	3-9 3/8 (1153)
DLO (mm)	1-2 15/16 (379)	1-6 15/16 (481)	1-10 15/16 (583)	2-0 15/16 (633)	2-2 15/16 (684)	2-4 15/16 (735)	2-6 15/16 (786)	2-10 15/16 (887)	3-2 15/16 (989)

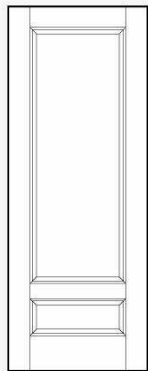
WUDH1626	WUDH2026	WUDH2426	WUDH2626	WUDH2826	WUDH3026	WUDH3226	WUDH3626 E	WUDH4026 E
----------	-----------------	----------	----------	----------	----------	----------	------------	------------

FOR ALL MUNTIN PATTERNS PLEASE REFER TO THE PROPOSED ELEVATIONS ON SHEET 4


← Previous Style

TS2210

Photos



Where to Buy



Mahogany

Next Style →

Series: TruStile (TS) Series

Application: Interior, Exterior

Construction:

M

W

R

Thickness: 1-3/8" **1-3/4"** 2-1/4"

Available Fire-Rating:

20

45

60

90

Fire-rated doors may require modified construction depending on rating. Contact TruStile or your TruStile Representative for details.

DOOR TYPE - 2

MARVIN SIGNATURE™ COLLECTION | ULTIMATE
AWNING / AWNING PUSH OUT

MO (mm)	1-4 1/2 (419)	1-6 1/2 (469)	1-8 1/2 (520)	2-1/2 (622)	2-2 1/2 (673)	2-4 1/2 (723)	2-6 1/2 (774)	2-8 1/2 (825)
RO (mm)	1-5 (431)	1-7 (482)	1-9 (533)	2-1 (635)	2-3 (688)	2-5 (736)	2-7 (787)	2-9 (838)
FS (mm)	1-4 (406)	1-6 (457)	1-8 (508)	2-0 (609)	2-2 (660)	2-4 (711)	2-6 (762)	2-8 (812)
DLO (mm)	0-10 13/64 (259)	1-0 13/64 (310)	1-2 13/64 (361)	1-6 13/64 (462)	1-8 13/64 (513)	1-10 13/64 (564)	2-0 13/64 (615)	2-2 13/64 (666)

UAWN1614	UAWN1814	UAWN2014	UAWN2414	UAWN2614	UAWN2814	UAWN3014	UAWN3214
UAWN1616	UAWN1816	UAWN2016	UAWN2416	UAWN2616	UAWN2816	UAWN3016	UAWN3216
UAWN1618	UAWN1818	UAWN2018	UAWN2418	UAWN2618	UAWN2818	UAWN3018	UAWN3218
UAWN1620	UAWN1820	UAWN2020	UAWN2420	UAWN2620	UAWN2820	UAWN3020	UAWN3220
UAWN1624	UAWN1824	UAWN2024	UAWN2424	UAWN2624	UAWN2824	UAWN3024	UAWN3224
UAWN1628	UAWN1828	UAWN2028	UAWN2428	UAWN2628	UAWN2828	UAWN3028	UAWN3228

WINDOW TYPE D

WOOD ULTIMATE SLIDING FRENCH DOOR

6-8 HEIGHT (7-0, 8-0 AND 9-0 HEIGHT SEE BELOW)

Clad MO (mm)	2-7 15/16 (811)	3-1 15/16 (964)	4-1 15/16 (1268)	4-11 1/2 (1511)	5-1 1/8 (1553)
Wood MO (mm)	2-10 9/16 (878)	3-4 9/16 (1030)	4-4 9/16 (1335)	5-2 1/8 (1578)	5-3 3/4 (1619)
RO (mm)	2-8 7/16 (824)	3-2 7/16 (976)	4-2 7/16 (1281)	5-0 (1524)	5-1 5/8 (1565)
FS (mm)	2-7 7/8 (799)	3-1 7/8 (951)	4-1 7/8 (1256)	4-11 (1499)	5-0 5/8 (1540)
DLO (mm)	1-7 19/32 (498)	2-1 19/32 (650)	3-1 19/32 (955)	1-8 15/16 (832)	1-9 3/4 (552)

2668	3068	4068	50R68	5068
2670	3070	4070	50R70	5070
2680	3080	4080	50R80	5080
2690	3090			5090

Clad MO (mm)	5-11 1/2 (1816)	6-1 1/8 (1857)	6-5 1/2 (1969)	7-11 1/2 (2426)	8-1 1/8 (2467)
Wood MO (mm)	6-2 1/8 (1883)	6-1 3/4 (1924)	N/A	8-2 1/8 (2492)	8-3 3/4 (2534)
RO (mm)	6-0 (1829)	6-1 5/8 (1870)	6-6 (1981)	8-0 (2438)	8-1 5/8 (2480)
FS (mm)	5-11 (1803)	6-0 5/8 (1845)	6-5 (1956)	7-11 (2413)	8-0 5/8 (2454)
DLO (mm)	2-2 15/16 (684)	2-3 3/4 (705)	2-5 15/16 (760)	3-2 15/16 (989)	3-3 3/4 (1010)

60R68	6068	6668*	80R68	8068
60R70	6070		80R70	8070
60R80	6080		80R80	8080
6090				

Clad MO (mm)	7-9 1/4 (2368)	9-3 1/4 (2825)	12-3 1/4 (3739)
Wood MO (mm)	7-11 7/8 (2434)	9-5 7/8 (2892)	12-5 7/8 (3806)
RO (mm)	7-9 3/4 (2380)	9-3 3/4 (2838)	12-3 3/4 (3852)
FS (mm)	7-8 3/4 (2355)	9-2 3/4 (2813)	12-2 3/4 (3727)
DLO (mm)	1-9 3/4 (552)	2-3 3/4 (705)	3-3 3/4 (1010)

7668	9068	12068
7670	9070	12070
7680	9080	12080

DOOR TYPE - 3 AND 4

MARVIN SIGNATURE™ COLLECTION | ULTIMATE

1 3/4" INSWING / OUTSWING FRENCH DOOR

Clad MO (mm)	4-1 1/8 (1248)	4-11 1/2 (1511)	5-1 1/8 (1553)	5-5 5/8 (1864)	5-11 1/2 (1816)	6-1 1/8 (1857)	7-1 1/8 (2162)
Wood MO (mm)	4-3 3/4 (1314)	5-2 1/8 (1578)	5-3 3/4 (1619)	5-7 3/4 (1721)	6-2 1/8 (1883)	6-3 3/4 (1824)	7-3 3/4 (2229)
RO (mm)	4-1 5/8 (1260)	5-0 (1524)	5-1 5/8 (1565)	5-5 5/8 (1667)	6-0 (1829)	6-1 5/8 (1870)	7-1 5/8 (2175)
FS (mm)	4-0 5/8 (1235)	4-11 (1499)	5-0 5/8 (1540)	5-4 5/8 (1641)	5-11 (1803)	6-0 5/8 (1845)	7-0 5/8 (2149)
DLO (mm)	1-1 19/32 (345)	1-6 25/32 (477)	1-7 19/32 (498)	1-9 19/32 (548)	2-0 25/32 (629)	2-1 19/32 (650)	2-7 19/32 (802)

4068	50R68	6068	6468	60R68	6068	7068
4070	50R70	6070	6470	60R70	6070	7070
4080	50R80	6080	6480	60R80	6080	7080

Clad MO (mm)	6-0 5/16 (1837)	7-6 5/16 (2294)	8-0 5/16 (2446)	9-0 5/16 (2751)	10-6 5/16 (3208)
Wood MO (mm)	6-2 15/16 (1903)	7-8 15/16 (2361)	8-2 15/16 (2513)	9-2 15/16 (2818)	10-8 15/16 (3275)
RO (mm)	6-0 13/16 (1849)	7-6 13/16 (2307)	8-0 13/16 (2459)	9-0 13/16 (2764)	10-6 13/16 (3221)
FS (mm)	5-11 13/16 (1824)	7-5 13/16 (2281)	7-11 13/16 (2434)	8-11 13/16 (2738)	10-5 13/16 (3196)
DLO (mm)	1-1 19/32 (345)	1-7 19/32 (498)	1-9 19/32 (548)	2-1 19/32 (650)	2-7 19/32 (802)

6068	7668	8068	9068	10668
6070	7670	8070	9070	10670
6080	7680	8080	9080	10680

Ultimate Inswing French Door: UIFD
Ultimate Outswing French Door: UOFD
Ultimate Wood Inswing French Door: UWIFD
Ultimate Wood Outswing French Door: UWOFD

DOOR TYPE - 5

February 2020

7-0, 8-0 AND 9-0 HEIGHTS:			
7-0 Height			
Clad MO (mm)	7-2 1/4 (2191)	8-0 Height	8-11 1/4 (2737)
Wood MO (mm)	7-3 3/4 (2224)	8-1 1/4 (2465)	N/A
RO (mm)	7-2 1/2 (2197)	8-0 (2438)	9-0 (2743)
FS (mm)	7-2 (2184)	7-11 1/2 (2426)	8-11 1/2 (2731)
DLO (mm)	6-10 1/4 (1781)	6-7 1/4 (2022)	7-7 1/4 (2327)

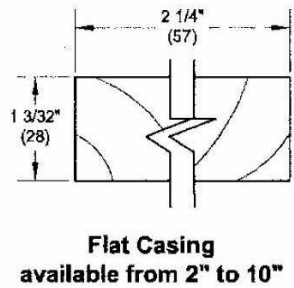
201911

COPELAND RESIDENCE
14 MECHANIC STREET
PORTSMOUTH, NH

WINDOW, DOOR SPECIFICATIONS

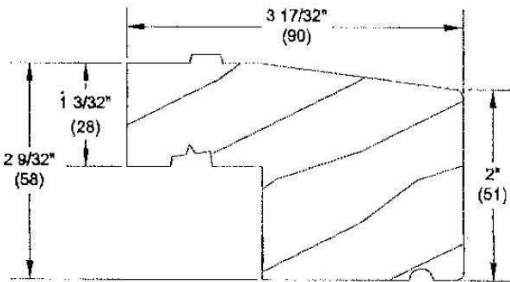
SHEET **8** OF 10
MARCH 4, 2020





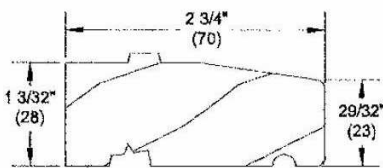
Flat Casing
available from 2" to 10"

3 1/2" FLAT CASING



W8063 - 2" Simulated Thick Subsill

SILL FOR ALL RENOVATION SIDE WINDOWS



W2134 - Subsill

SILL FOR ALL ADDITION SIDE WINDOWS

Wood Options



For projects that call for the natural or historic beauty of wood exteriors, we offer a selection of high-quality exterior wood options, including Pine, Vertical Grain Douglas Fir, Mahogany and Primed Pine.

Selected: Mahogany



WOOD TYPE

Authentic Divided Lite (ADL)



Separate pieces of glass are glazed between muntin bars - the way windows have been made since the beginning but with Marvin's updated design to increase energy efficiency.

DIVIDE LITES (5/8" STICKING)



Standard Sizes and Shipping Weights
Floor Access Doors - With Drainage Channel Frame

	SIZE		ALUMINUM			STEEL		
	(width x length)		Model#	Weight		Model#	Weight	
	inches	mm		lbs.	kg.		lbs.	kg.
Reinforced for a 300 lb/ft ² (1464 kg/m ²) Live Load	24 X 24	610 X 610	J-1AL	65	29	J-1	179	81
	30 X 30	762 X 762	J-2AL	88	40	J-2	231	105
	36 X 30	914 X 762	J-3AL	97	44	J-3	274	124
	36 X 36	914 X 914	J-4AL	108	49	J-4	300	136
	42 X 42	1067 X 1067	J-5AL	135	61	J-5	402	182
	30 X 48	762 X 1219	J-6AL	115	52	J-6	317	144
	36 X 48	914 X 1219	J-7AL	127	58	J-7	389	176
	30 X 60	762 X 1524	J-8AL	152	69	J-8	373	169
	36 X 60	914 X 1524	J-9AL	160	73	J-9	462	210
	36 X 72	914 X 1829	J-10AL	188	85	J-10	498	226
	48 X 30	1219 X 762	JD-1AL	145	66	JD-1	365	166
	48 X 48	1219 X 1219	JD-2AL	173	78	JD-2	498	226
	48 X 72	1219 X 1829	JD-3AL	234	106	JD-3	652	296
	60 X 60	1524 X 1524	JD-4AL	241	109	JD-4	663	301
Reinforced for an AASHTO H-20 Wheel Load	24 X 24	610 X 610	J-1ALH20	110	50	J-1H20	250	113
	30 X 30	762 X 762	J-2ALH20	124	56	J-2H20	350	159
	36 X 30	914 X 762	J-3ALH20	165	75	J-3H20	425	193
	36 X 36	914 X 914	J-4ALH20	174	79	J-4H20	490	222
	42 X 42	1067 X 1067	J-5ALH20	235	107	J-5H20	635	288
	48 X 30	1219 X 762	JD-1ALH20	201	91	JD-1H20	532	241
	48 X 48	1219 X 1219	JD-2ALH20	293	133	JD-2H20	815	370
	48 X 72	1219 X 1829	JD-3ALH20	485	220	JD-3H20	1235	560
	60 X 60	1524 X 1524	JD-4ALH20	500	227	JD-4H20	1180	535

Models with "D" in the model # indicate double leaf configuration

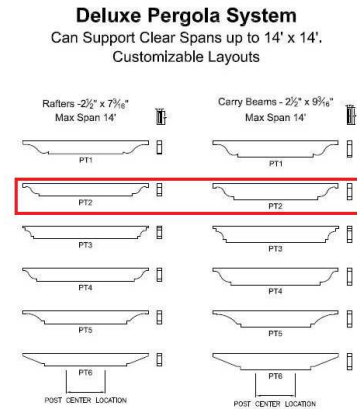


In addition to the standard sizes shown above, BILCO can custom fabricate products to meet your special size requirements. Contact The BILCO Company or your local sales representative.

11/19/18

BULKHEAD

PERGOLA

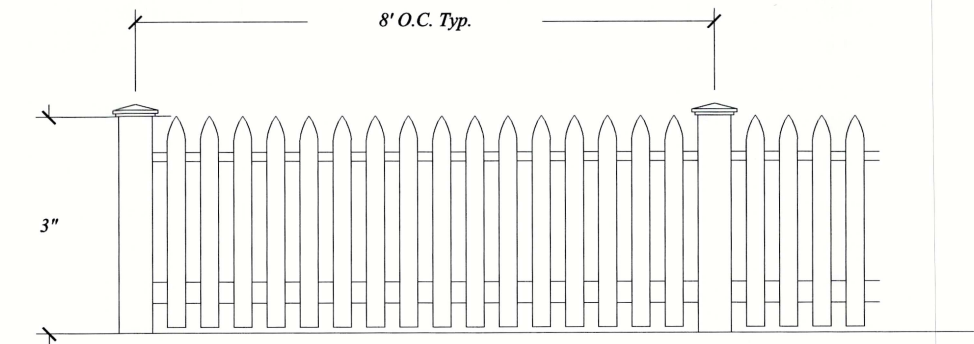


STANDARD PERGOLA PARTS

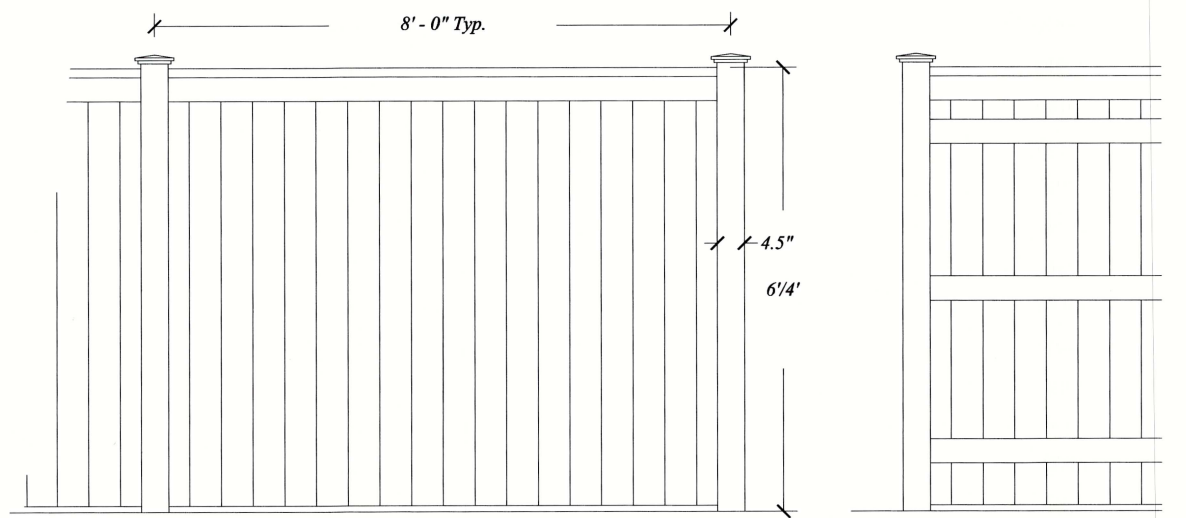


www.intexmillwork.com
45 Mill Street
Mays Landing, NJ, 08330
Phone 856-293-4100
Fax 856-293-4102

10/12/18



1 **Proposed White Picket Fence**
Scale: 3/4"=1'-0"



2 **Proposed 6 1/4" Cedar Board Fence - Front and Back**
Scale: 3/4"=1'-0"

Note: Proposed landscape improvements within the 25' cemetery buffer are pending review and comment from NHDHR.

