

EXISTING ELEVATIONS



FRONT ELEVATION



BACK ELEVATION



LEFT ELEVATION



RIGHT ELEVATION

AERIAL VIEW



15 MOUNT VERNON STREET
PORTSMOUTH, NEW HAMPSHIRE

AERIAL VIEW AND EXISTING ELEVATIONS

HDC APPLICATION FOR WORK SESSION: SEPTEMBER 4, 2019



233 VAUGHAN ST, SUITE 101
PORTSMOUTH, NH 03801
(603) 431-2808
www.cjarchitects.net

1.0



VIEW FROM SITE TOWARDS CITY HALL



VIEW FROM SITE TOWARDS SOUTH STREET

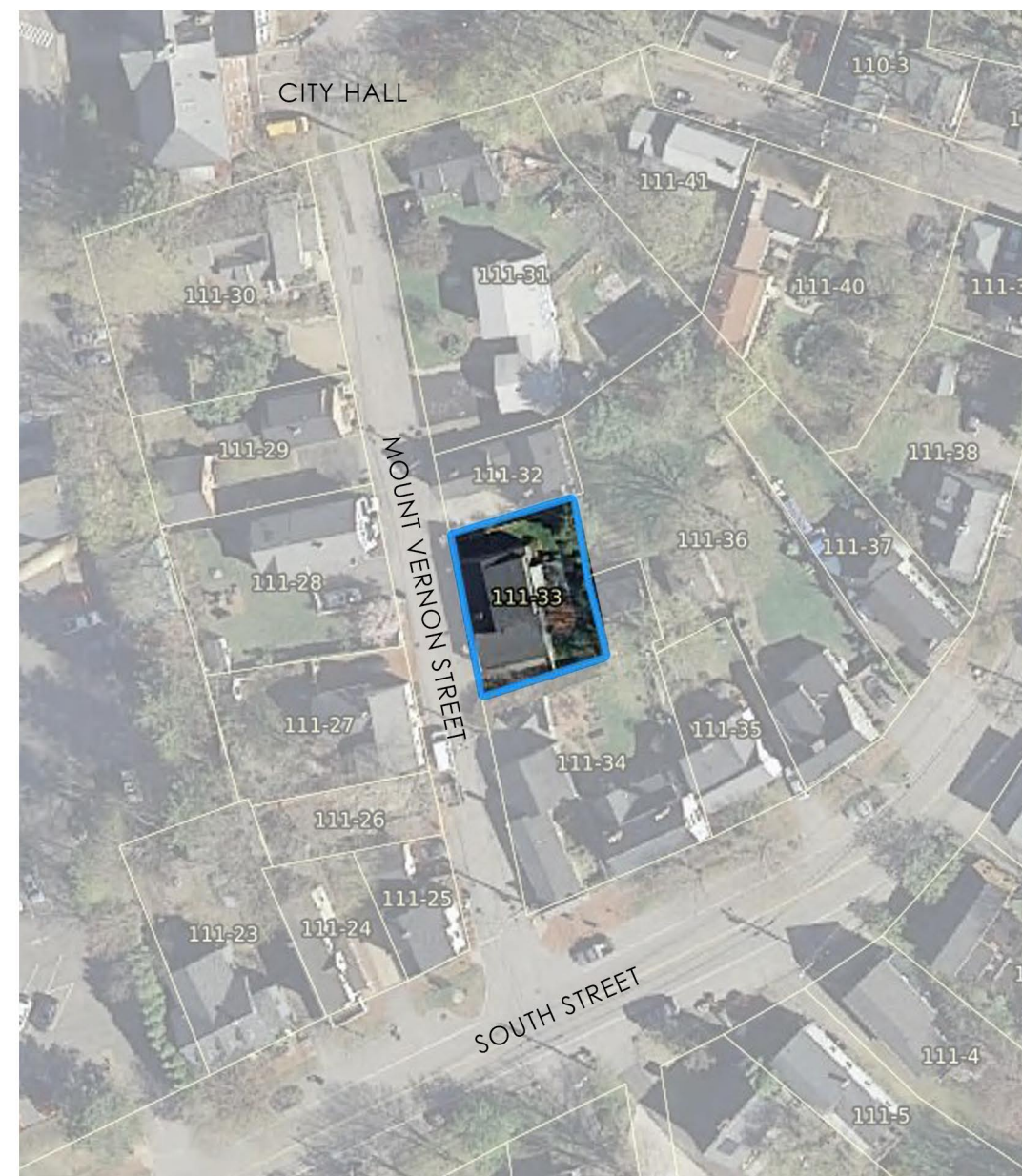


VIEW FROM CITY HALL TOWARDS SITE



VIEW FROM SOUTH STREET TOWARDS SITE

SITE MAP



15 MOUNT VERNON STREET
PORTSMOUTH, NEW HAMPSHIRE

STREET VIEWS

HDC APPLICATION FOR WORK SESSION: SEPTEMBER 4, 2019



233 VAUGHAN ST, SUITE 101
PORTSMOUTH, NH 03801
(603) 431-2808
www.cjarchitects.net

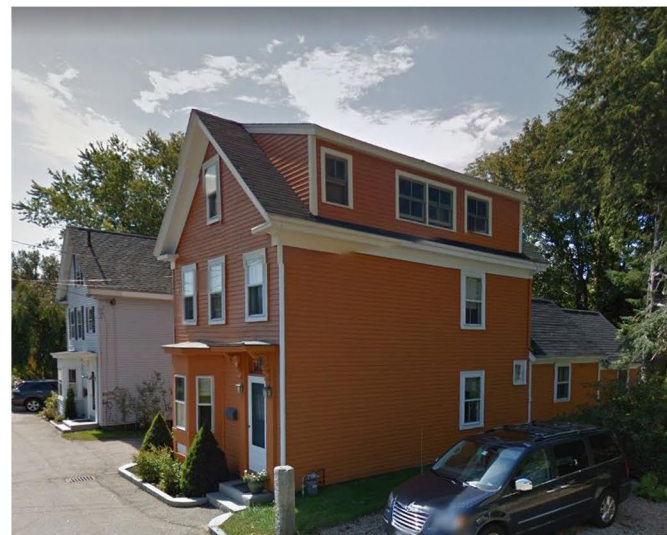
2.0



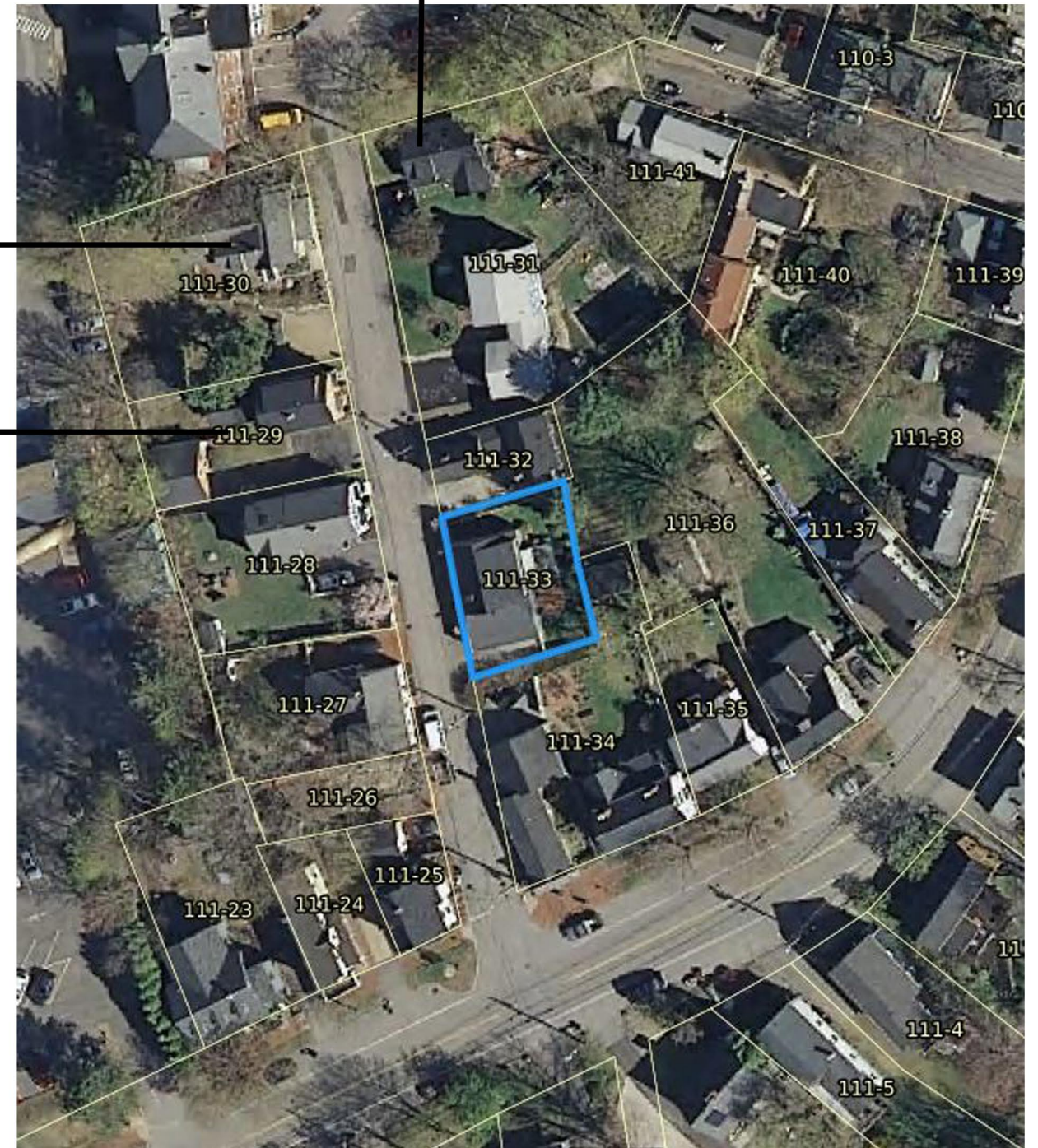
57 MOUNT VERNON STREET



64 MOUNT VERNON STREET



50 MOUNT VERNON STREET



15 MOUNT VERNON STREET
PORTSMOUTH, NEW HAMPSHIRE

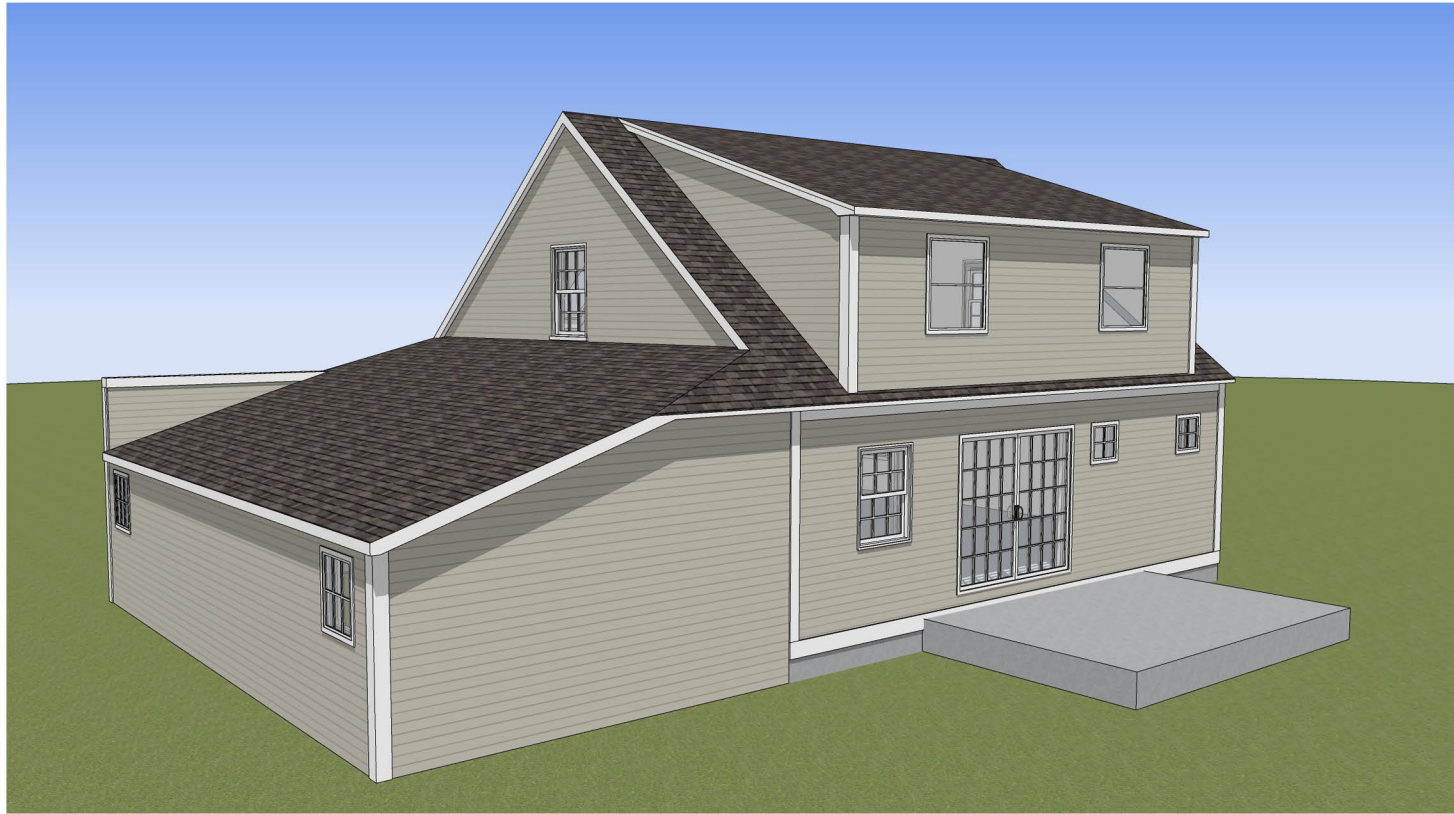
NEIGHBORING BUILDINGS WITH DORMERS

HDC APPLICATION FOR WORK SESSION: SEPTEMBER 4, 2019

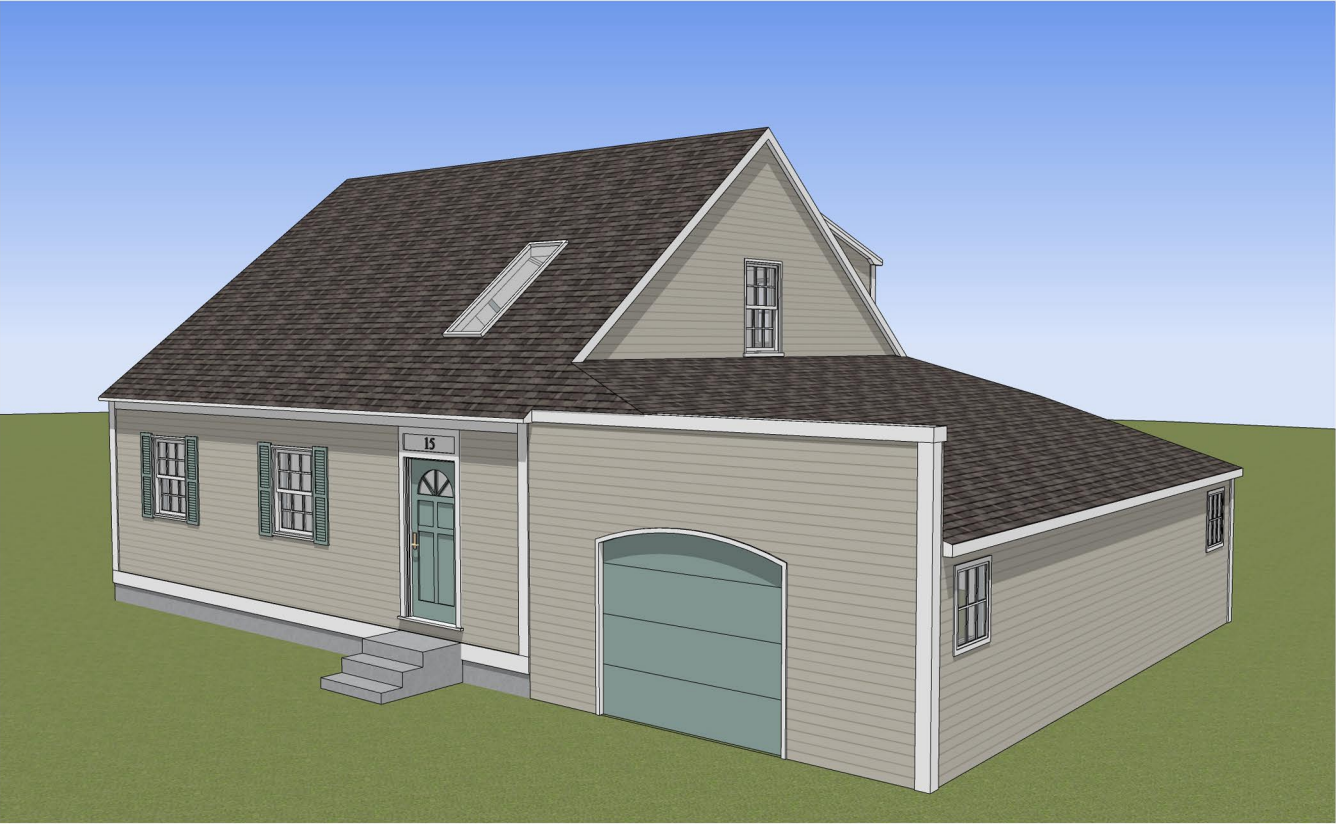


233 VAUGHAN ST, SUITE 101
PORTSMOUTH, NH 03801
(603) 431-2808
www.cjarchitects.net

3.0



EXISTING REAR VIEW



EXISTING FRONT VIEW



PROPOSED REAR VIEW



PROPOSED FRONT VIEW

15 MOUNT VERNON STREET
PORTSMOUTH, NEW HAMPSHIRE

EXISTING & PROPOSED VIEWS

HDC APPLICATION FOR WORK SESSION: SEPTEMBER 4, 2019



233 VAUGHAN ST, SUITE 101
PORTSMOUTH, NH 03801
(603) 431-2808
www.cjarchitects.net

4.0

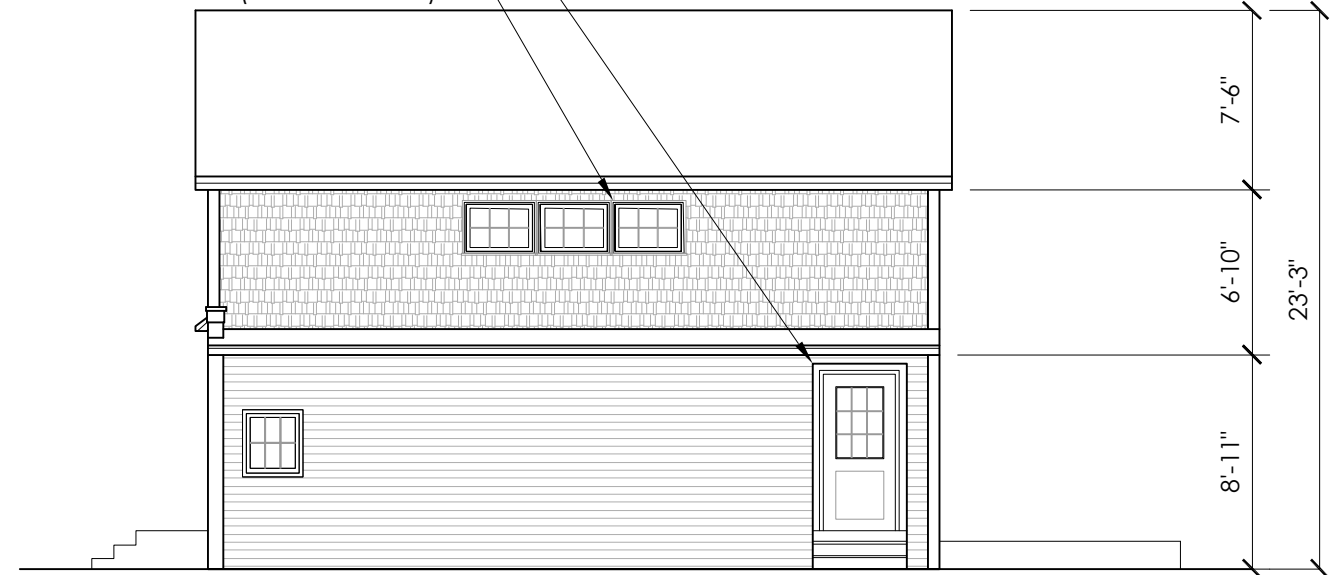


EXTEND EXISTING ROOF LINE OVER
GARAGE. HEIGHT TO MATCH EXISTING
RIDGE
ASPHALT ROOF SHINGLES TO MATCH
EXISTING
5 1/2" PAINTED WOOD CORNER BOARDS
TO MATCH EXISTING



ANDERSEN 400 SERIES WINDOWS
(3'-0" W x 4'-0" H)
NEW PAINTED WOOD SHAKES
1" PAINTED WOOD SILL AND
CASING TO MATCH EXISTING
NEW BARN DOOR
HARDWARE
NEW WIDER PAINTED
FIBERGLASS OVERHEAD
GARAGE DOOR
NEW WOOD BARN DOOR

JELDWEN DOOR (3'-0"W x 6'-8"H)
WITH 1x4 WOOD CASING
ANDERSEN 400 SERIES WINDOWS
(3'-0" W x 2'-0" H)



15 MOUNT VERON STREET
PORTSMOUTH, NEW HAMPSHIRE

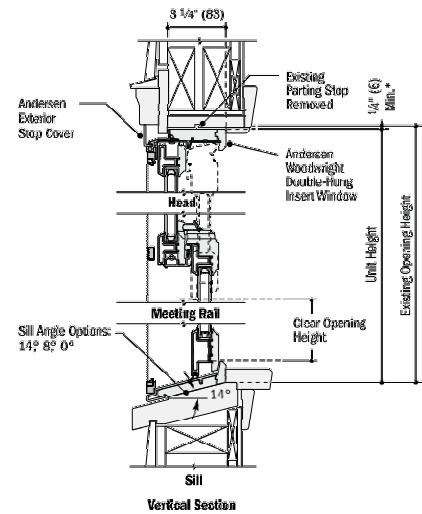
EXISTING AND PROPOSED ELEVATIONS
SCALE: 1/8" = 1'-0"

HISTORIC DISTRICT COMMISSION WORK SESSION: SEPTEMBER 4, 2019

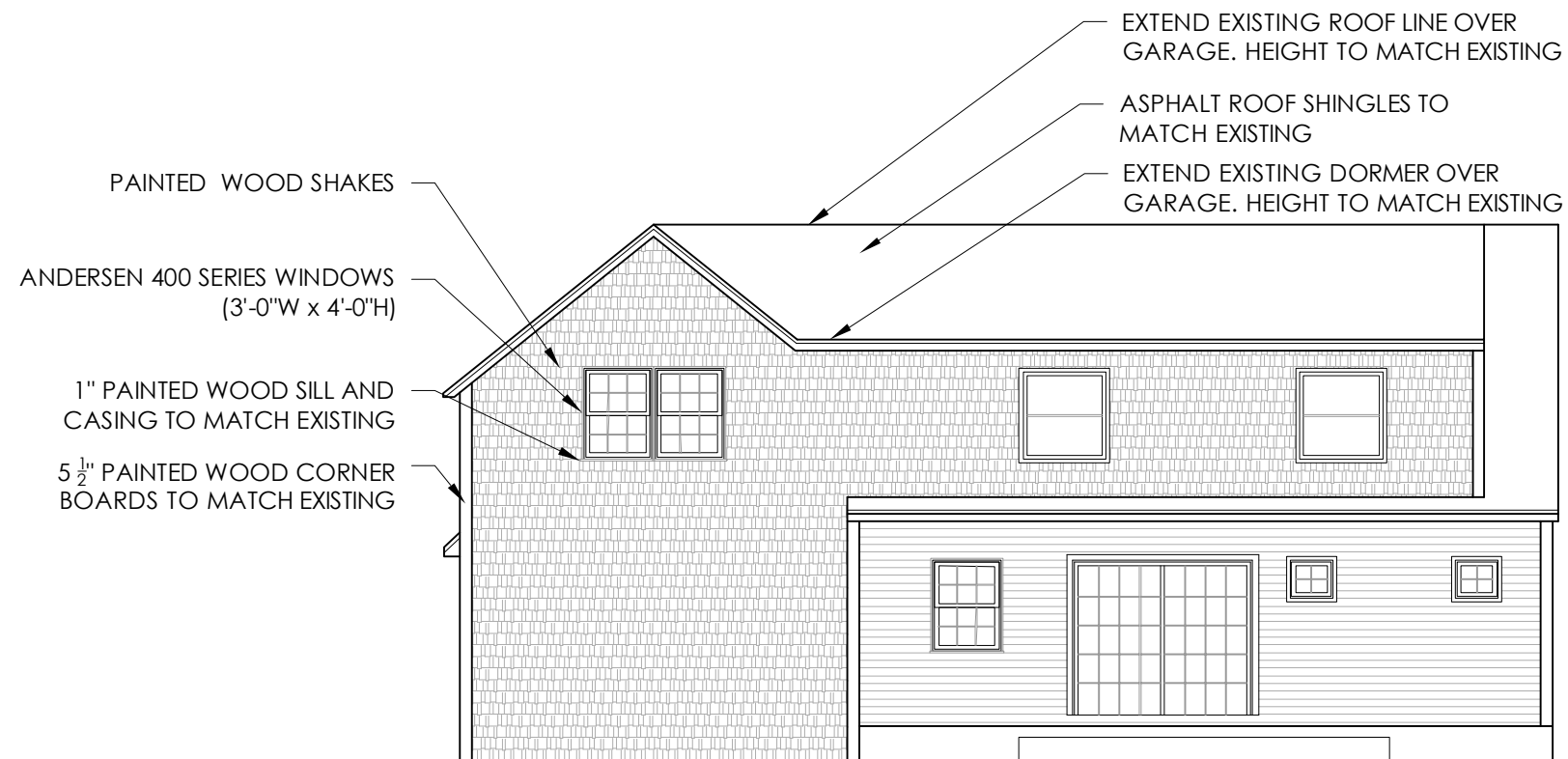


233 VAUGHAN ST, SUITE 101
PORTSMOUTH, NH 03801
(603) 431-2808
www.cjarchitects.net

5.0



ANDERSEN 400 SERIES WINDOW



15 MOUNT VERNON STREET
PORTSMOUTH, NEW HAMPSHIRE

EXISTING AND PROPOSED ELEVATIONS
SCALE: 1/8" = 1'-0"

HISTORIC DISTRICT COMMISSION WORK SESSION: SEPTEMBER 4, 2019



233 VAUGHAN ST, SUITE 101
PORTSMOUTH, NH 03801
(603) 431-2808
www.cjarchitects.net

5.1