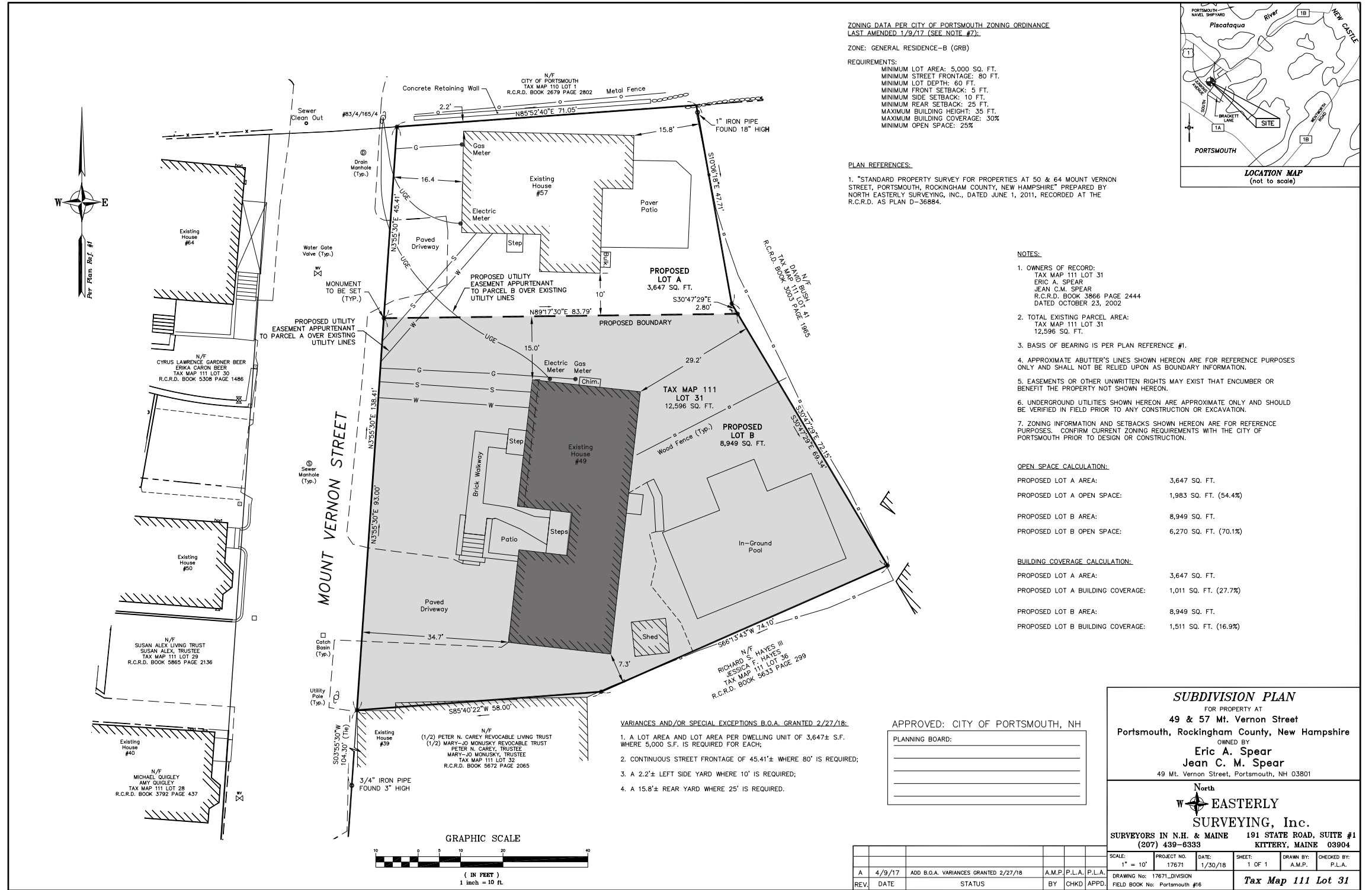


# 49 Mt. Vernon Street

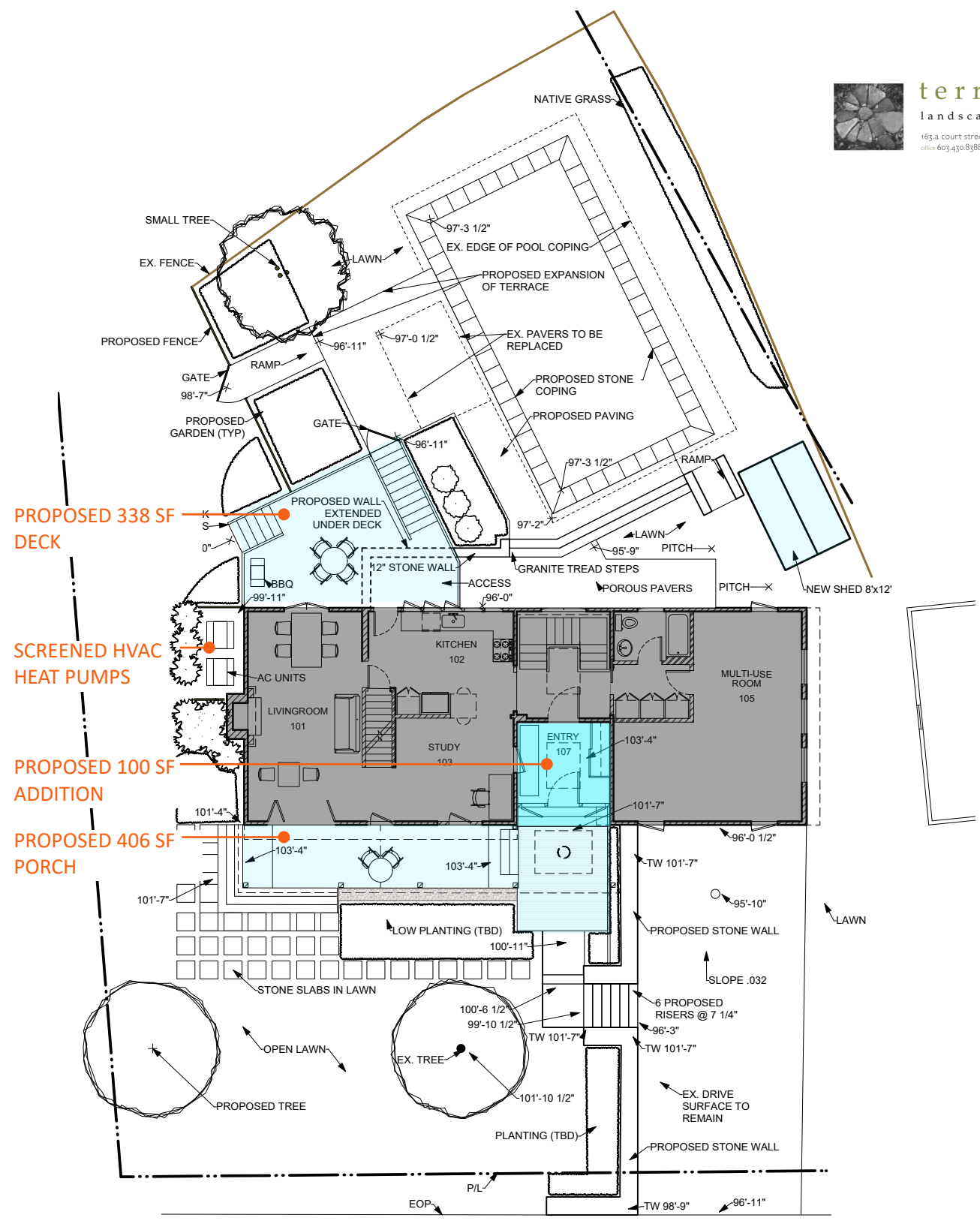
CITY OF PORTSMOUTH  
Historic District  
Commission  
Work Session  
January 8, 2020



EXISTING SITE PLAN

49 Mount Vernon Street  
Historic District Commission Work Session  
January 8, 2020





PROPOSED 338 SF DECK

SCREENED HVAC HEAT PUMPS

PROPOSED 100 SF ADDITION

PROPOSED 406 SF PORCH

SITE & LANDSCAPE PLAN  
 SCALE 1/16"=1'-0"

**49 Mount Vernon Street**  
 Historic District Commission Work Session  
 January 8, 2020



EAST FACADE



EAST FACADE



SOUTH AND EAST FACADES



NORTH FACADE



SOUTH FACADE



WEST FACADE

IEWS OF EXISTING HOUSE

49 Mount Vernon Street

Historic District Commission Work Session

January 8, 2020

Placework



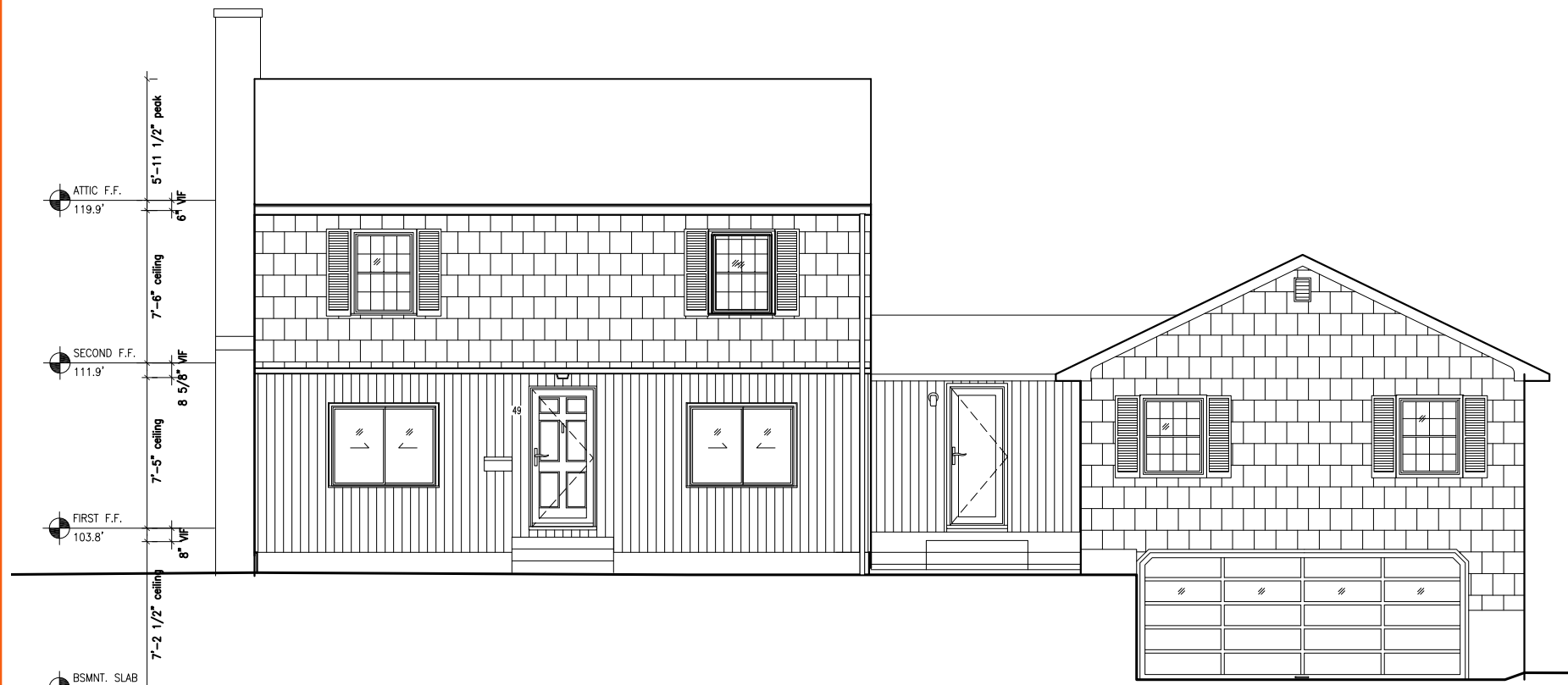
# Mt. Vernon Street



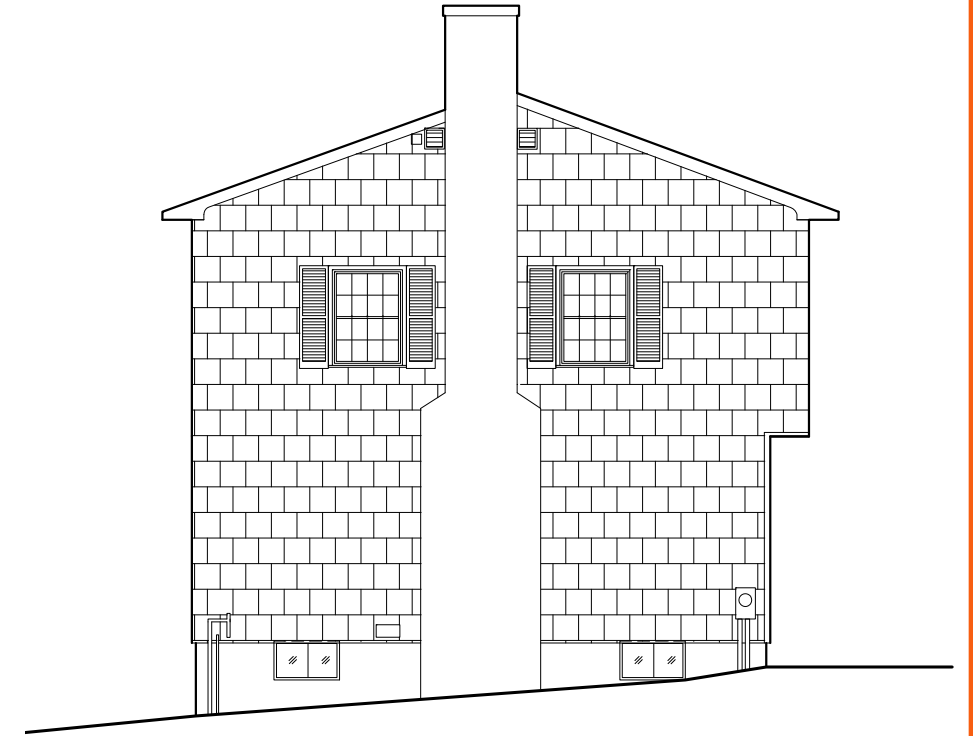
NEIGHBORHOOD CONTEXT PHOTOS  
MOUNT VERNON STREET

49 Mount Vernon Street  
Historic District Commission Work Session  
January 8, 2020

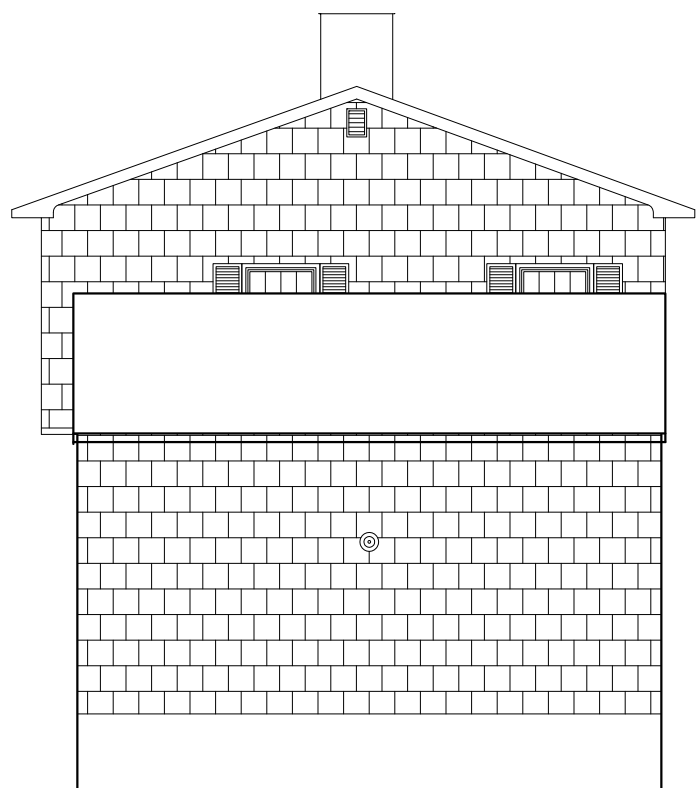
# Placework



WEST (STREET) FACADE



NORTH FACADE



SOUTH FACADE

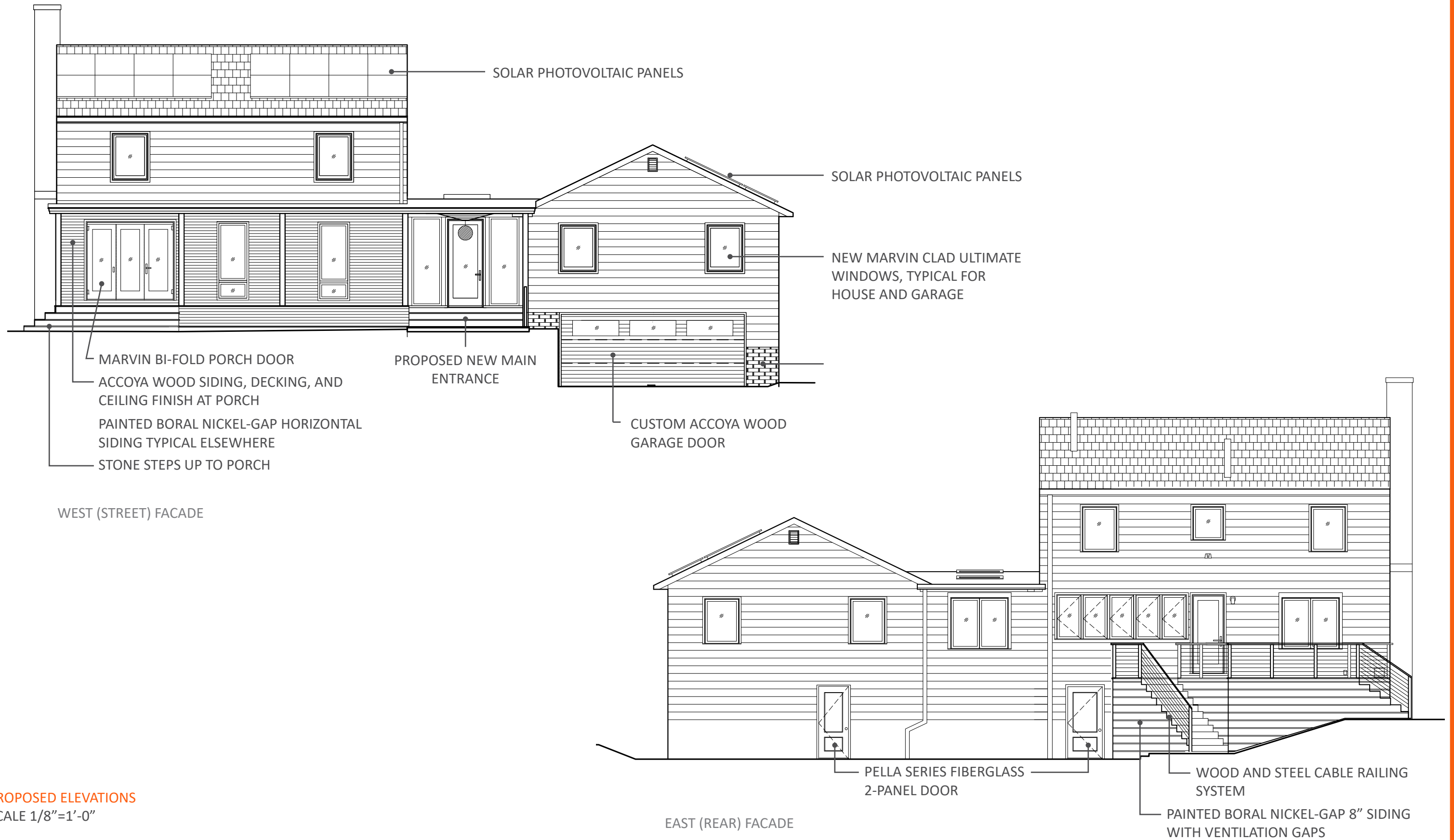


EAST FACADE

EXISTING ELEVATIONS  
SCALE 1/8"=1'-0"

49 Mount Vernon Street  
Historic District Commission Work Session  
January 8, 2020

**Placework**

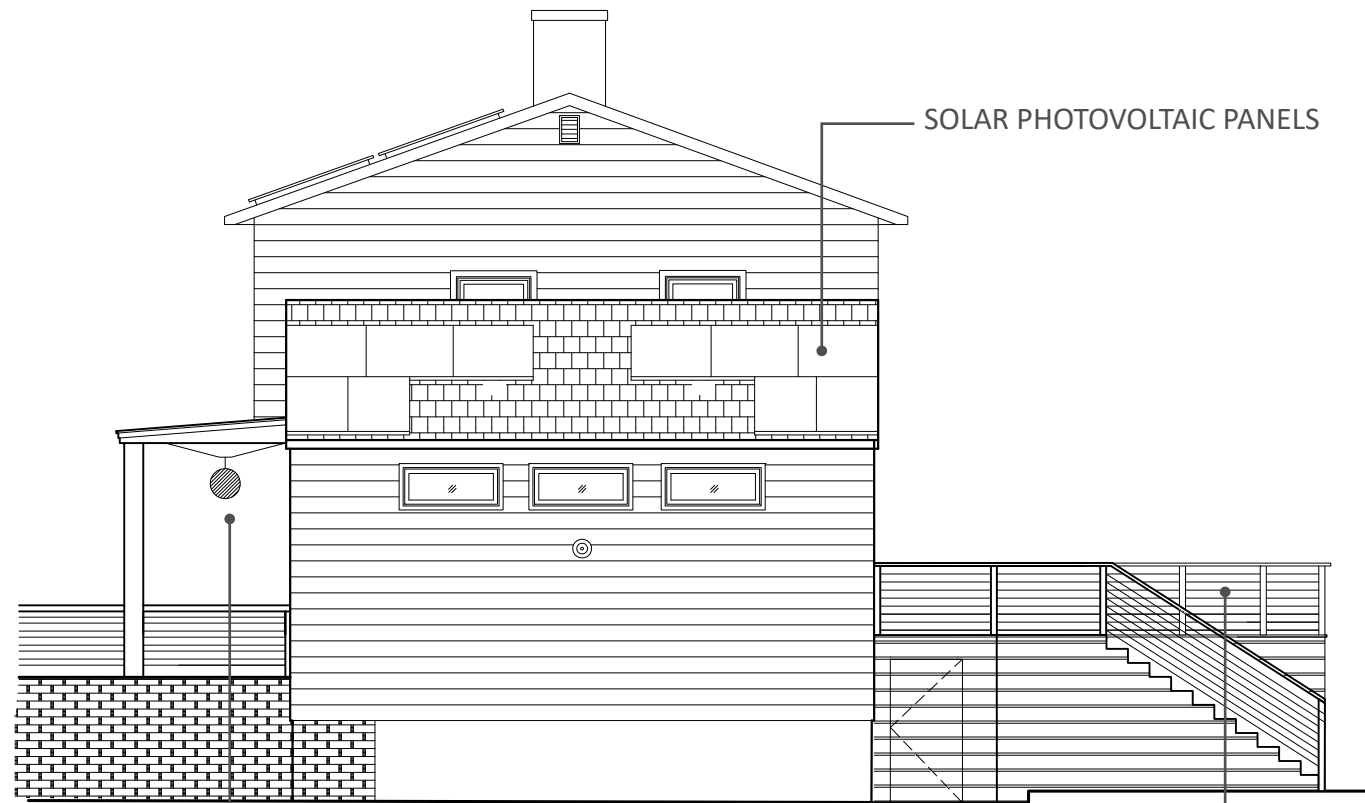


PROPOSED ELEVATIONS  
SCALE 1/8" = 1'-0"

49 Mount Vernon Street

Historic District Commission Work Session  
January 8, 2020

**Placework**

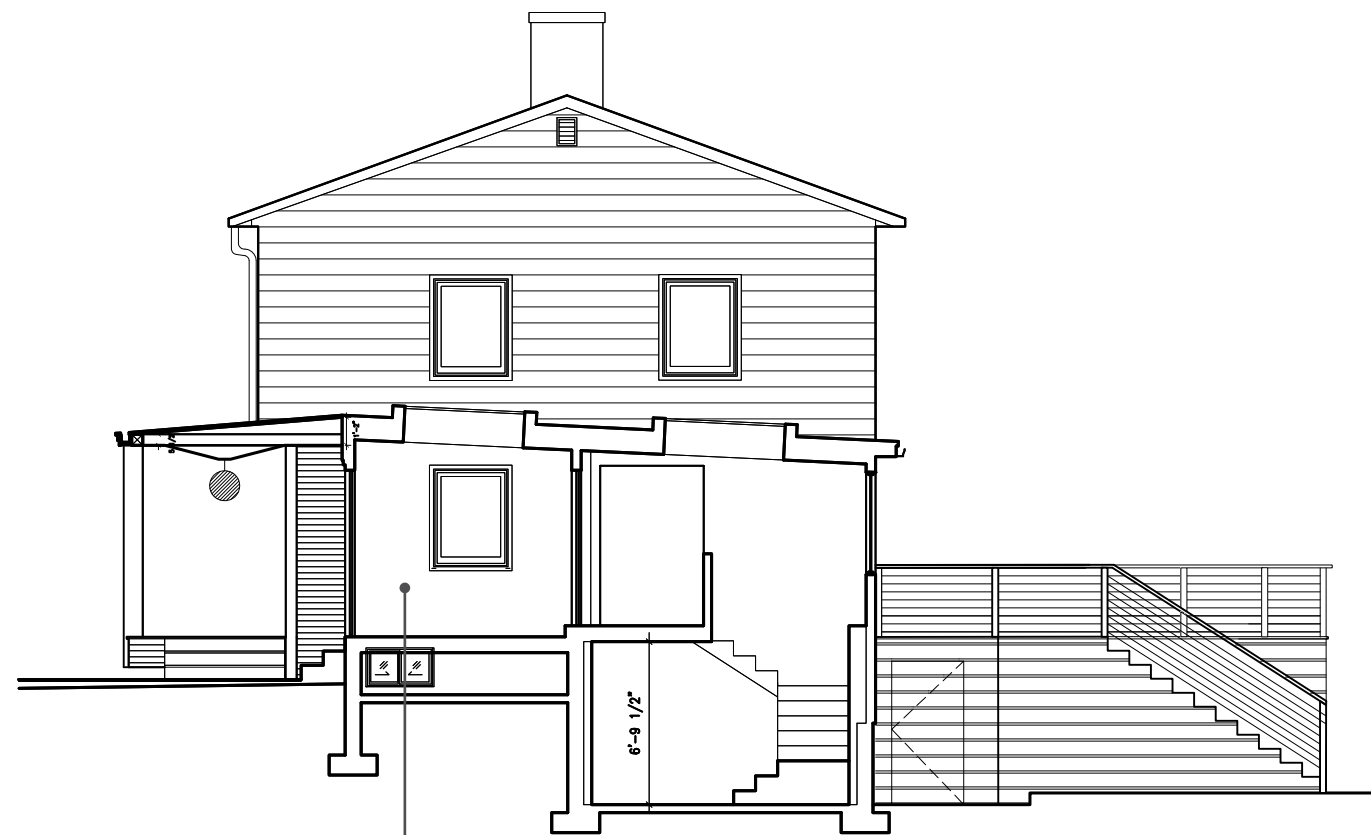


SOLAR PHOTOVOLTAIC PANELS

NEW PENDANT LIGHT  
FIXTURE ON SLOPED  
ACCOYA CEILING

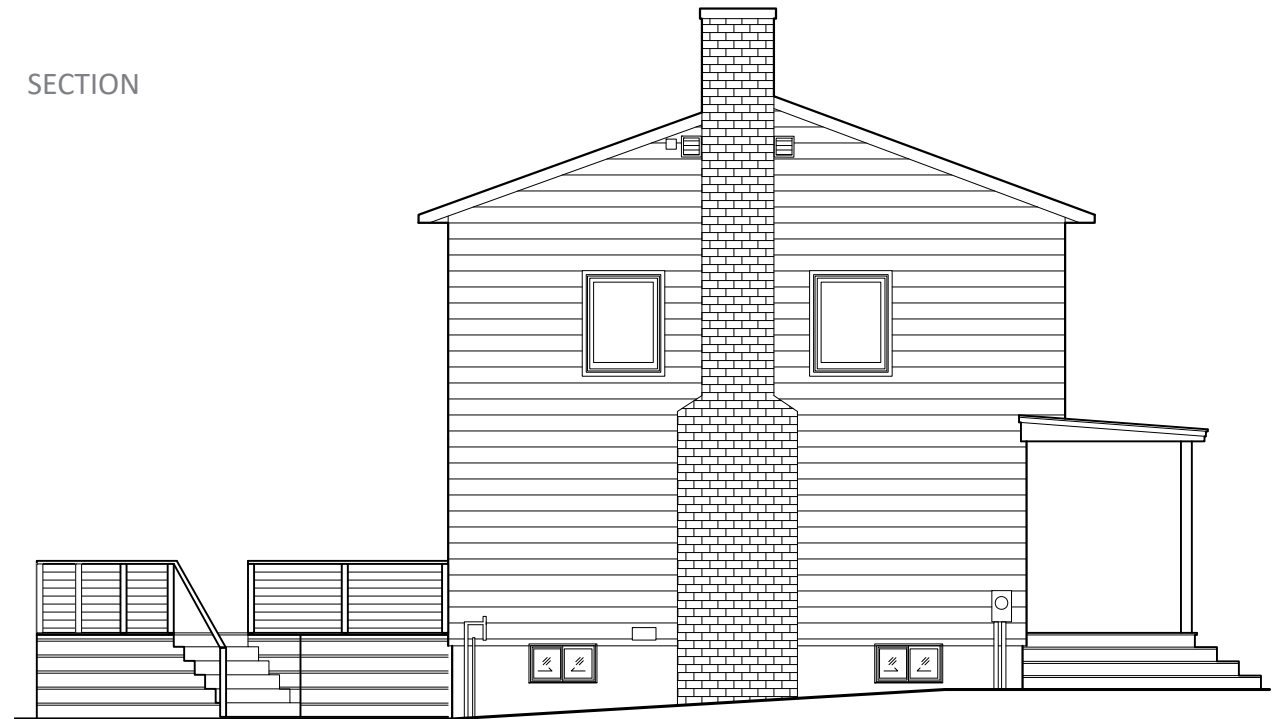
WOOD AND STEEL CABLE RAIL  
SYSTEM, TYPICAL AT DECK AND  
PORCH

SOUTH FACADE



NEW INTERIOR MUDROOM  
ADDITION

SECTION

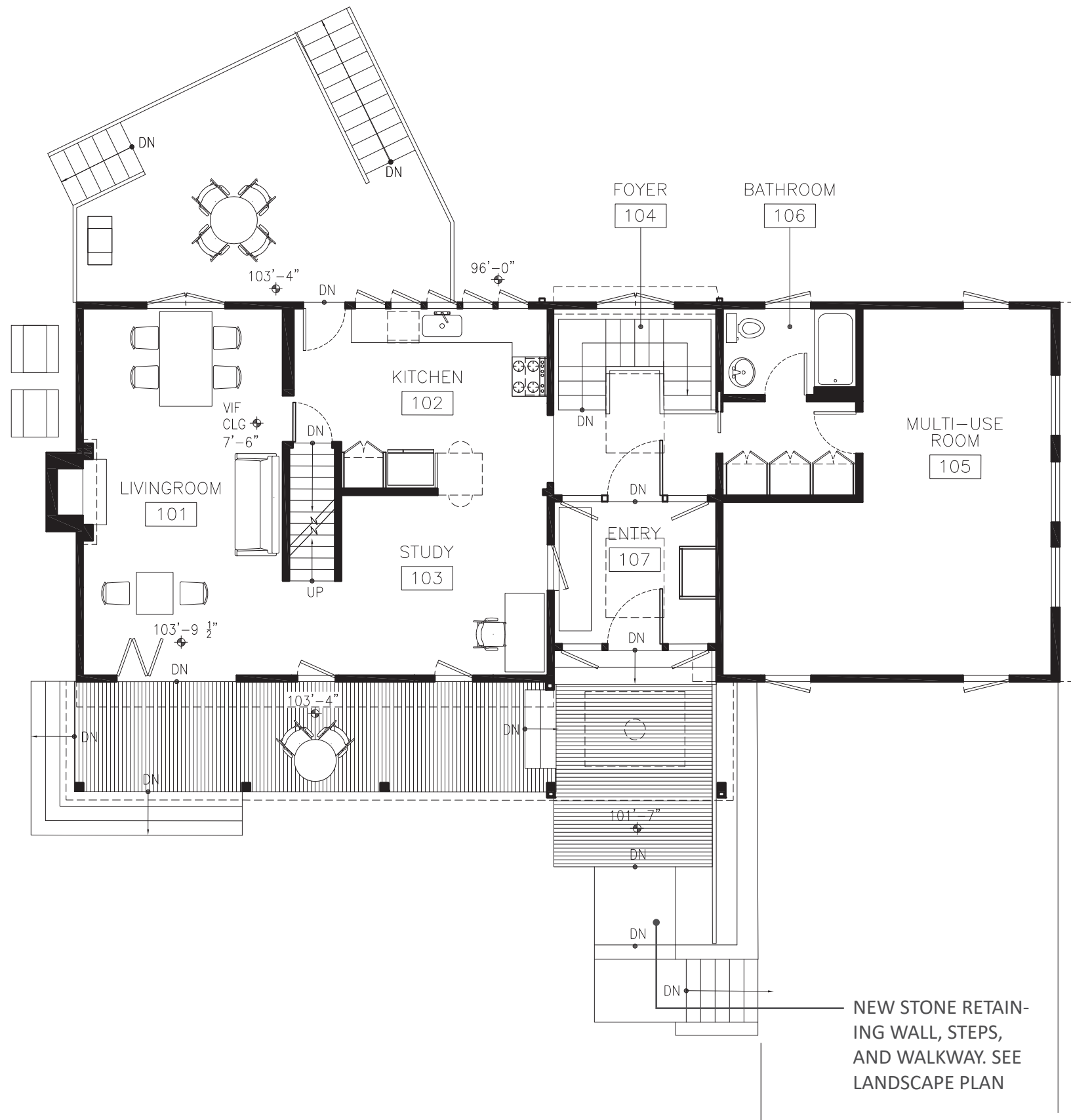


NORTH FACADE

PROPOSED ELEVATIONS  
SCALE 1/8" = 1'-0"

49 Mount Vernon Street  
Historic District Commission Work Session  
January 8, 2020

**Placework**

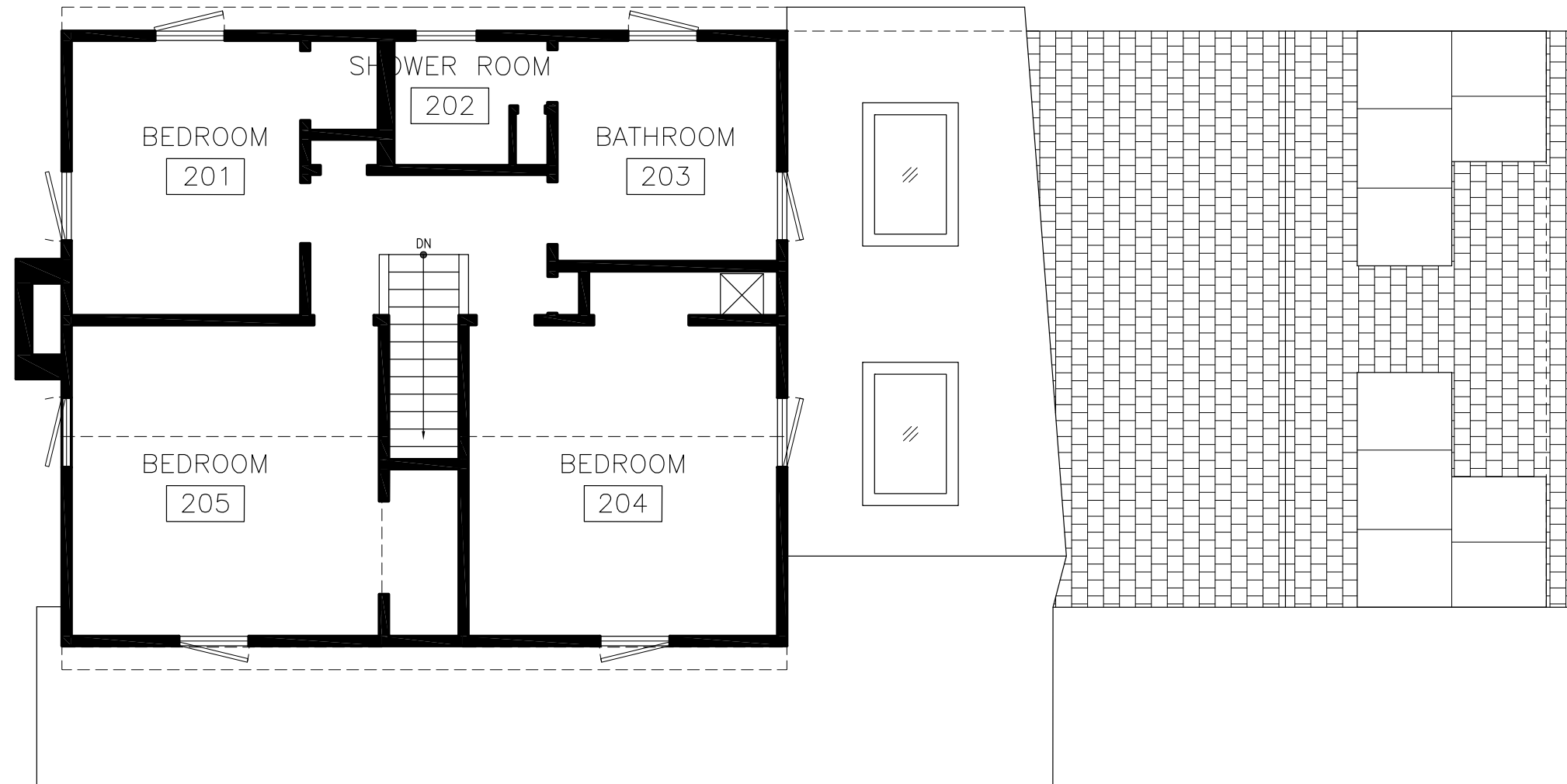


PROPOSED PLAN: FIRST FLOOR  
 SCALE: 1/8"=1'-0"

49 Mount Vernon Street  
 Historic District Commission Work Session  
 January 8, 2020

**Placework**





PROPOSED PLAN: SECOND FLOOR

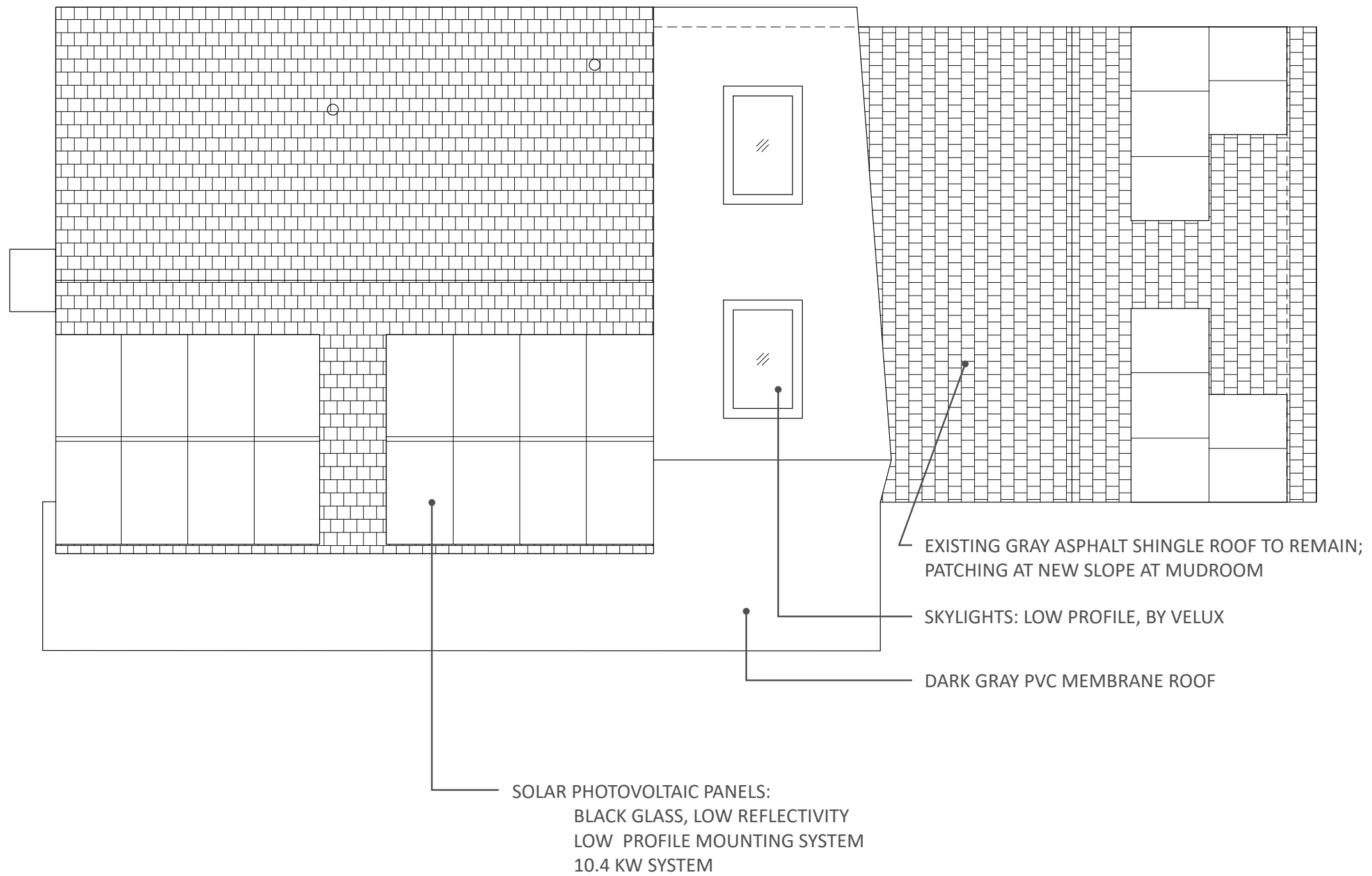
SCALE: 1/8"=1'-0"

49 Mount Vernon Street

Historic District Commission Work Session

January 8, 2020

**Placework**



PROPOSED PLAN: ROOF  
SCALE: 1/8"=1'-0"

49 Mount Vernon Street

Historic District Commission Work Session

January 8, 2020

**Placework**



Long lasting wood for exterior applications

**Standard Lengths**  
94.5", 118.1", 141.7", 165.4", 189.0"

**Stability & Durability**  
Accoya® wood offers unsurpassed dimension stability and durability. Approved for use in UC3A, UC3B & UC4A categories per AWWPA U1, this includes exterior above ground AND ground contact.

**Processing**  
Processing does not affect the unique properties of Accoya® wood, as it is modified throughout and not leachable. It is easy to process and can be compared to profiling a soft wood species. No special tools are required for cross cutting, ripping, planing, routing and drilling. Sanding before finishing is rarely required.



## The Popular Look Of Nickel Gap For Inside Or Out

The Nickel Gap profile interlocks with a tongue-and-groove and is self-gapping, creating a consistent nickel-sized space between each board. Use it for interior or exterior applications for a trendy, yet timeless look.

- Durable, poly-ash material resists moisture and bugs
- Virtually no expansion or contraction due to temperature or moisture changes
- Comes pre-primed and ready for paint
- No edge sealing of cuts required
- Suitable for ground contact
- Available in 16' lengths



Tampa, Florida, USA

**TRADA SIDING TEST**

Accoya® wood (AC) was the only wood that did not cup in this TRADA trial on wooden siding.

Toronto, Ontario, Canada

**COATING COMPARISON AFTER 13 YEARS OUTDOOR EXPOSURE**

Acetylated wood  
Translucent WB Acrylic Coating

Unmodified wood  
Translucent WB Acrylic Coating

Acetylated wood  
Opaque WB Acrylic Coating

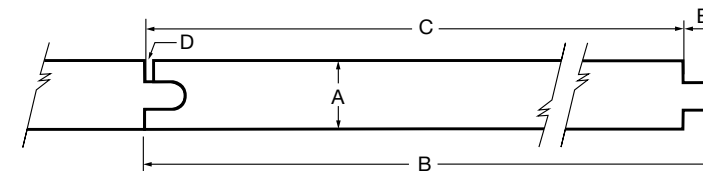
Unmodified wood  
Opaque WB Acrylic Coating

**CONTACT US**

USA  
5000 Quorum Drive #620  
Dallas, Texas 75254  
T: +1 972 233 6565

**ACCSYS GROUP**

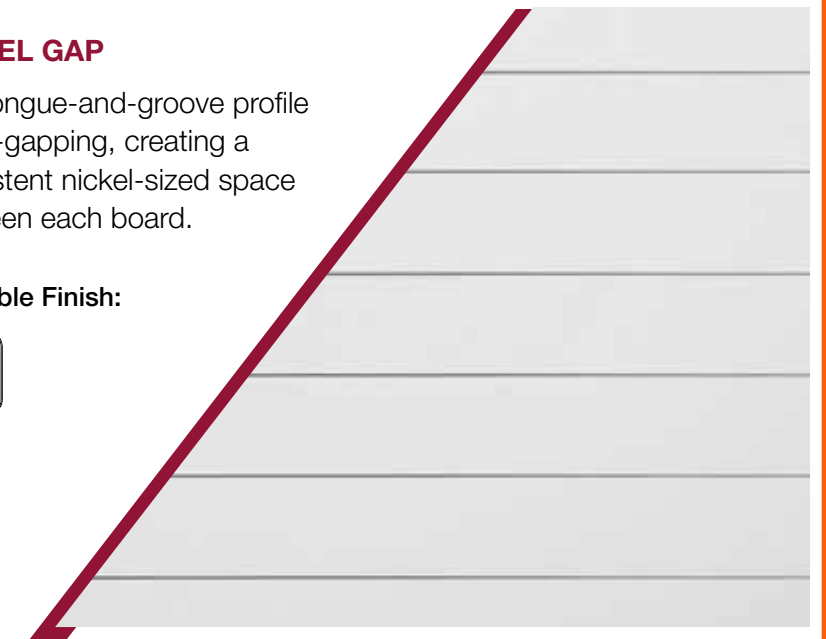
Nominal Size	Actual Thickness (A)	Actual Width (B)	Reveal (C)	Gap (D)	Tongue (E)
1 x 4	0.6875"	3.50"	3.159"	0.08"	0.341"
1 x 6	0.6875"	5.50"	5.159"	0.08"	0.341"
1 x 8	0.6875"	7.25"	6.909"	0.08"	0.341"
1 x 10	0.6875"	9.25"	8.909"	0.08"	0.341"



### NICKEL GAP

The tongue-and-groove profile is self-gapping, creating a consistent nickel-sized space between each board.

**Available Finish:**



© Accsys Technologies July 2016. Accoya® and the Trimarque Device are registered trademarks owned by Titan Wood Limited, a wholly owned subsidiary of Accsys Technologies PLC, and may not be used or reproduced without written permission. To the best of the knowledge and belief of Titan Wood Limited the information contained in this document is in accordance with the facts and is provided on the basis that Titan Wood Limited and/or any of its affiliates, officers, employees or advisers are not liable for any loss or damage whatsoever in respect of the accuracy or completeness of such information or the result of having acted upon it.

www.accoya.com

**MATERIALS & PRODUCTS**  
EXTERIOR SIDING

**49 Mount Vernon Street**  
Historic District Commission Work Session  
January 8, 2020

PELLA SERIES FIBERGLASS ENTRY DOORS AT  
BASEMENT AND GARAGE (REAR OF HOUSE)



## European 2 Panel Entry Door Solid Panel

Pella®

### Features

- Durable, low-maintenance fiberglass.
- PerformaSeal™ weathertight seal technology.
- AdvantagePlus™ optional low-maintenance protection system.
- Optional multipoint lock system for added security.
- VividGrain™ stain process provides the authentic appearance of wood.
- Optional built-in Insynctive® security sensor.

MATERIALS & PRODUCTS  
EXTERIOR SIDING

49 Mount Vernon Street

Historic District Commission Work Session

January 8, 2020

MARVIN ULTIMATE BI-FOLD DOOR AND  
SWINGING FRENCH DOOR



INTERIOR

EXTERIOR



INTERIOR

EXTERIOR

### Features of the Ultimate Bi-Fold Door

- Choose from 81 operating configurations
- Available in heights up to 10 feet or widths up to 55 feet
- Individual panel sizes available up to 3.5 feet wide by 9.5 feet high
- Optional single swinging active access door panel allows for convenient everyday use
- Integrated multi-point hardware system at folding panels for smooth and effortless operation
- Contemporary hardware for a sleek and simple aesthetic
- Retractable screen available in widths up to 24 feet is nearly invisible when not in use
- Hidden Lock Status Sensor option connects with your smart home to indicate when door is closed and locked
- Performance and high-performance sills available, along with a low-profile, flush universal design sill for accessibility

### Features of the Ultimate Swinging French Door

- Available in heights up to 9 feet or widths up to 14 feet
- Choose a Traditional panel aesthetic with a 8" bottom rail or for a Contemporary look and more daylight opening, select a 4 3/4" bottom rail
- Integrated, concealed multi-point lock offers security and a tight seal with no visible components
- Handles available in a wide range of styles from traditional to contemporary
- Durable sill is engineered for years of energy-efficient and weathertight performance
- Unique multi-point lock offers security and a tight seal with no visible components
- Adjustable hinges for years of smooth operation
- Hidden Lock Status Sensor option connects with your smart home to indicate when door is closed and locked
- Available with IZ3 coastal/hurricane certification. IZ4 available for Ultimate Outswing French Door only.
- CE certified.

Placework

MARVIN SIGNATURE ULTIMATE WINDOWS (ALUMINUM CLAD)

TYPICAL WINDOW IS A CASEMENT OR AWNING PUSH OUT WITH INTERIOR SCREEN. SEE PLANS FOR WINDOW SWINGS.



Features of the Ultimate Casement Push Out Window

- Available in heights up to 8 feet or widths up to 3.5 feet
- Energy efficient even at the largest sizes
- Multi-point locking system ensures a tight seal and security from top to bottom
- Unique wash mode allows access to both sides of the glass from indoors
- CE certified

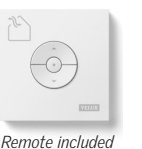
VELUX DECK MOUNTED SKYLIGHTS



Electric "Fresh Air" Skylight  
VSE Model

As the ideal daylighting solution for your home, the VELUX Electric "Fresh Air" Skylights bring in abundant natural light and with the touch of a button, open to let fresh air in too. Your home can be brighter and feel more fresh with the combined power of light and air from your skylight.

- A pre-installed concealed motor and control system lets you easily open and close with remote.
- Fitted with a rain sensor, your skylight will automatically close at the first signs of rain.
- Compatible with VELUX ACTIVE with NETATMO: your home's climate control and monitoring system. *See page 11*
- Clean, Quiet & Safe glass is standard on all VSE models. *See page 13*



Remote included



Model VSE	14° - 85° 3:12 - 137:12	C01	C04	C06	C08	M04	M06	M08	S01	S06
Rough opening (W-in. x H-in.)		21 x 26 7/8	21 x 37 1/8	21 x 45 3/4	21 x 54 1/16	30 1/16 x 37 7/8	30 1/16 x 45 3/4	30 1/16 x 54 7/16	44 1/4 x 26 7/8	44 3/4 x 45 3/4

MATERIALS & PRODUCTS  
WINDOWS

49 Mount Vernon Street  
Historic District Commission Work Session  
January 8, 2020

Placework

# HANDISWAGE™ CABLE RAILING

The HandiSwage™ System is designed to allow hidden cable fastening utilizing innovative swage components.

[OVERVIEW](#)

[GALLERY](#)

[SPECIFICATIONS & OPTIONS](#)

[RESOURCES & DOWNLOADS](#)

[REQUEST A QUOTE](#)

[FIND A DEALER](#)

## SPECIFICATIONS

### Straight Sections

Atlantis Rail offers standard rail heights of 36" or 42" for straight sections.

### Stair Sections

Rail height for stair sections is available in 36" only.

**Note:** Railing heights are offered in these dimensions due to nationwide building codes. However, Atlantis Rail can supply custom heights/lengths upon request.

### Between Posts Length

Atlantis Rail recommends staying within 4' section lengths to maintain structural integrity. If section lengths exceed 4', Atlantis Rail offers a Cable Stabilizer Kit to minimize cable deflection.

### Cable Spacing

The cable is spaced on posts at 3" on-center to comply with nationwide building

## OPTIONAL COMPONENTS

### Vinyl Post Components

White vinyl sleeves, fitting over a 4x4 post, are available in lengths of 48". Cut post sleeves to appropriate application height. Colonial style white vinyl post cap and base are also available as railing add-ons.

### Micro Star™ Lighting

Micro Star™ LED lights can be integrated into the top rail for subtle illumination. Also, the Micro Star™ LED Post Cap fits over standard 4x4 vinyl sleeves and provides sufficient lighting for stairs and walkways.



### MATERIALS & PRODUCTS

WOOD AND STEEL CABLE RAILING SYSTEM

### 49 Mount Vernon Street

Historic District Commission Work Session

January 8, 2020

**Placework**

## LED Bollard

Our LED bollard will complete every project with style. Providing 7W of powerful light, flexibility and functionality are at your fingertips.



Forms | dalsighting.com 104

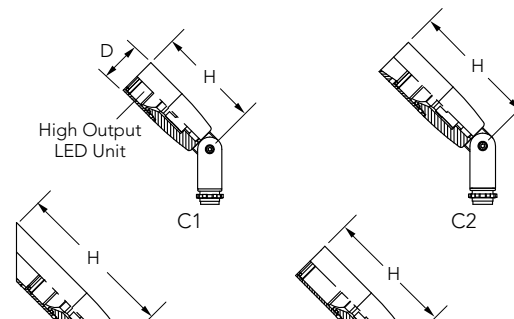


## CEDAR LED 12V LED 11



### Specifications

D:	Ø1-5/8" (41mm) + Mounting
H:	4-1/4" (108mm) w/C1
	4-7/8" (124mm) w/C2
	6-1/4" (159mm) w/C3
	5" (127mm) w/C4

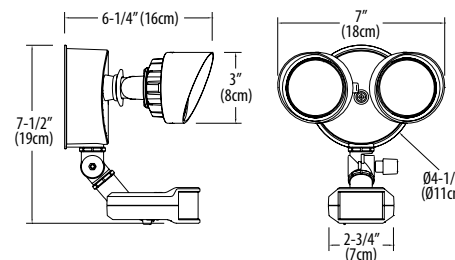


## OLF LED Security Floodlight with Motion Sensor



### Specifications

Width:	7.00" (17.8 cm)
Height:	7.5" (19.1 cm)
Depth:	6.25" (15.9 cm)
Weight:	1.5 lbs. (0.68 kg)
Lumen Output:	2,160
Input Power:	25W
Efficacy:	86 Lumens per Watt



Catalog Number \_\_\_\_\_

Notes \_\_\_\_\_

Type \_\_\_\_\_

Hit the Tab key or mouse over the page to see all interactive elements.

### Introduction

The OLF LED security floodlight combines energyefficient LEDs with motion sensing (or occupancy sensing) technology. OLF motion response feature includes 180 degree range, 70 feet forward detection, sensitivity adjustment switch and a test / time switch to adjust the duration to stay illuminated when motion is detected.

OLF 2RH contains two round heads delivering 2,160 lumens using only 25W power. OLF 2RH replaces up to two 90W PAR incandescent lamps and saves 86% energy. A built-in photocell prevents daylight operation, and reduces energy costs further. OLF family is the ideal solution for residential and commercial security floodlighting.

MATERIALS & PRODUCTS  
EXTERIOR LIGHT FIXTURES

49 Mount Vernon Street  
Historic District Commission Work Session  
January 8, 2020

Placework