

57 Mt. Vernon Street

1 of 15

CITY OF PORTSMOUTH
Historic District Commission
Public Hearing
October 2, 2019



Rendering of Proposed Design

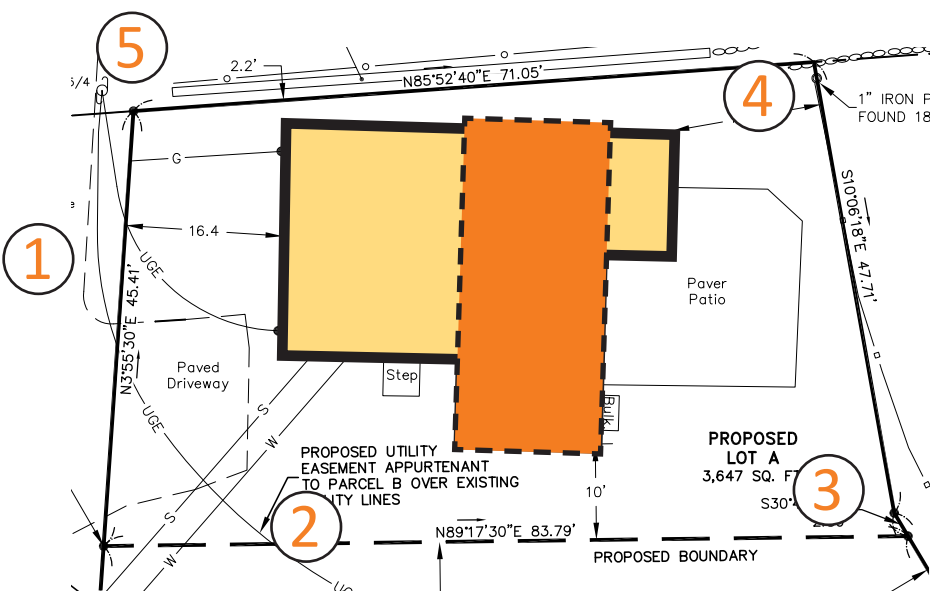
HDC HEARING OCTOBER 2019

57 MT. VERNON STREET
PORTSMOUTH, NEW HAMPSHIRE

MANYPENNY | MURPHY ARCHITECTURE
73 COURT STREET, PORTSMOUTH, NH 03801 TEL: 603-319-8199



VIEWS OF EXISTING



ELEVATION KEY PLAN



1 WEST/FRONT FACADE



2 SOUTH FACADE



3 SOUTHEAST VIEW OF REAR FACADE



4 NORTHEAST VIEW



5 NORTHWEST VIEW



Mt. Vernon Street



ADDITIONAL CONTEXT PHOTOS

5 of 15



Looking North on Mt. Vernon



House, looking North on Mt. Vernon



House, looking Northeast on Mt. Vernon



View from City Hall/North



View from City Hall/North



Looking Northeast at 49 Mount Vernon Street

RE-CONSTRUCTION PHOTOS (2004)



Original Carriage House with Apartment



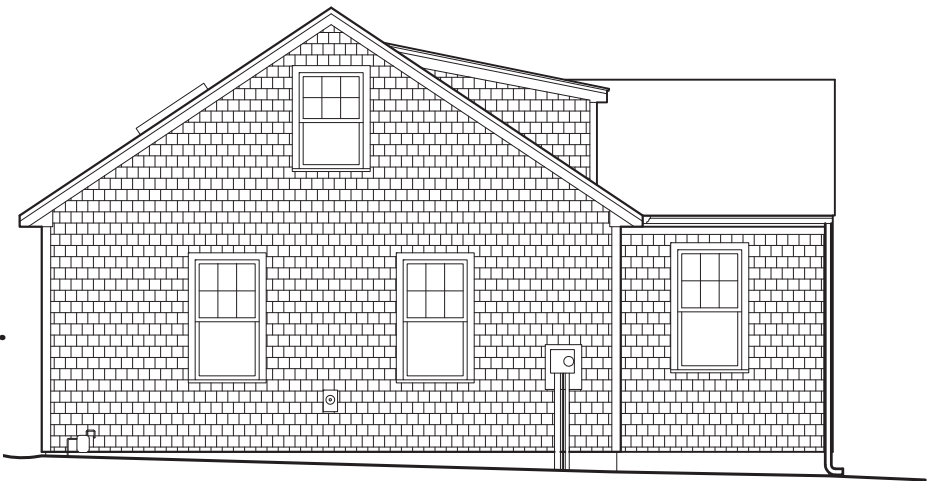
2004 Re-Construction Work



EXISTING FRONT ELEVATION (EAST)



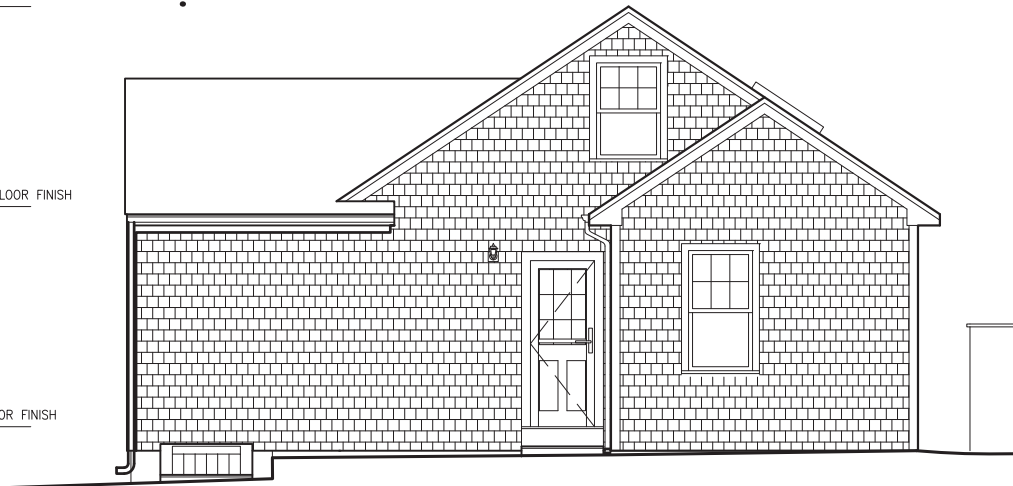
EXISTING ELEVATIONS SCALE: 1/8" = 1'-0"



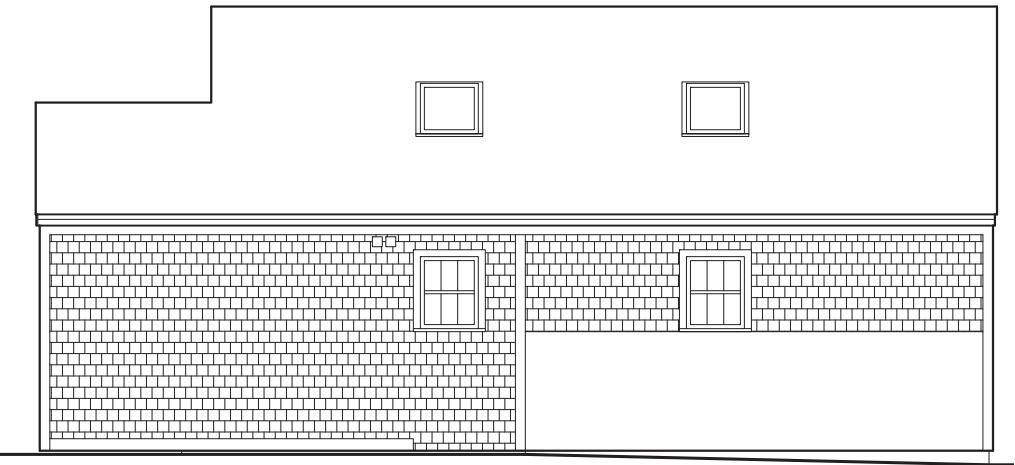
WEST (STREET) FACADE



SOUTH FACADE



EAST (REAR) FACADE



NORTH FACADE

TOP OF ROOF
EL. : 18'-6"

TOP OF SECOND FLOOR FINISH
EL. : 9'-2"

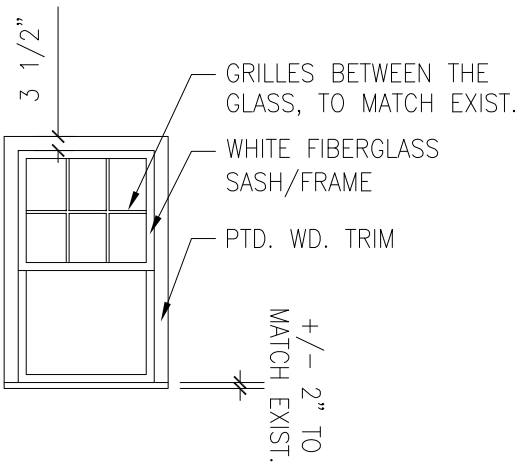
TOP OF FIRST FLOOR FINISH
EL. : 0'-0"

PROPOSED ELEVATIONS

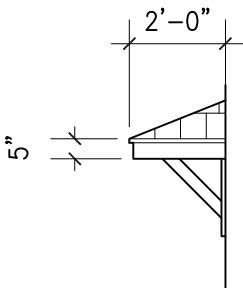
SCALE: 1/8" = 1'-0"

WINDOW KEY

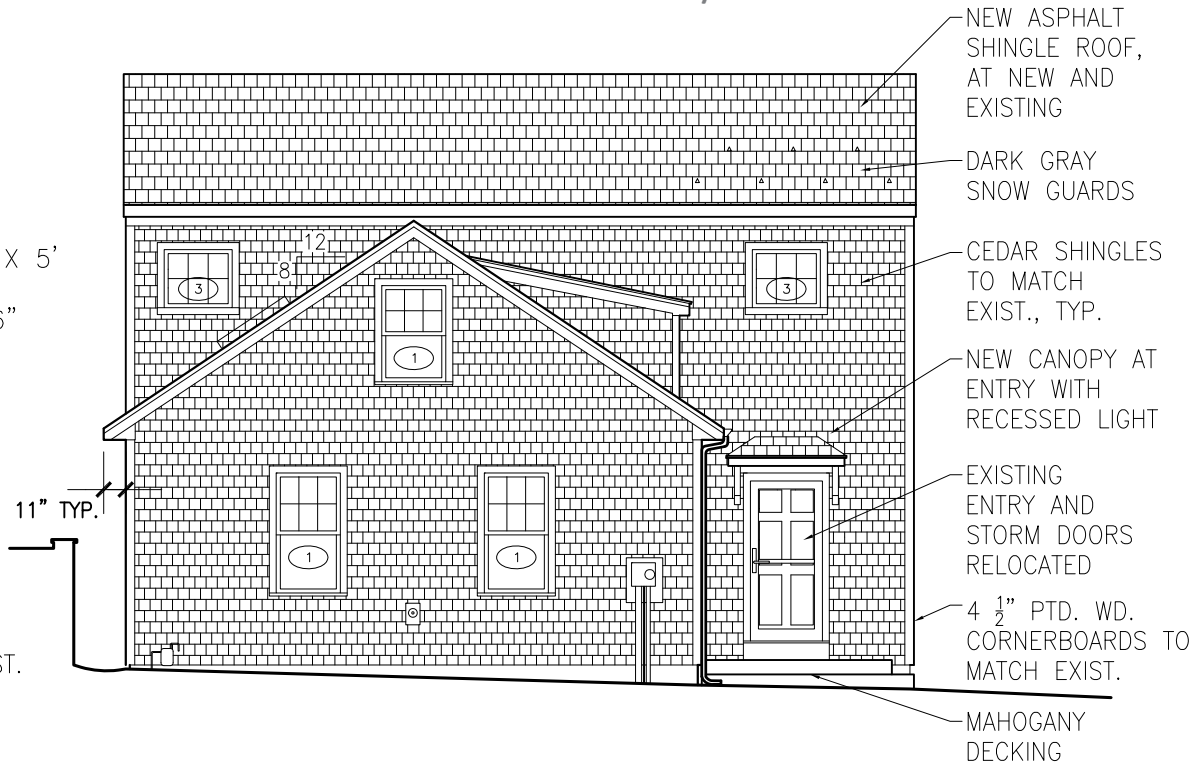
- ① EXISTING WINDOW, SIZE VARIES
- ② NEW DOUBLE HUNG WINDOW, 3' X 5'
- ③ NEW AWNING WINDOW, 3' X 2'-6"
- ④ NEW DOUBLE HUNG WINDOW, 3' X 2'-6"



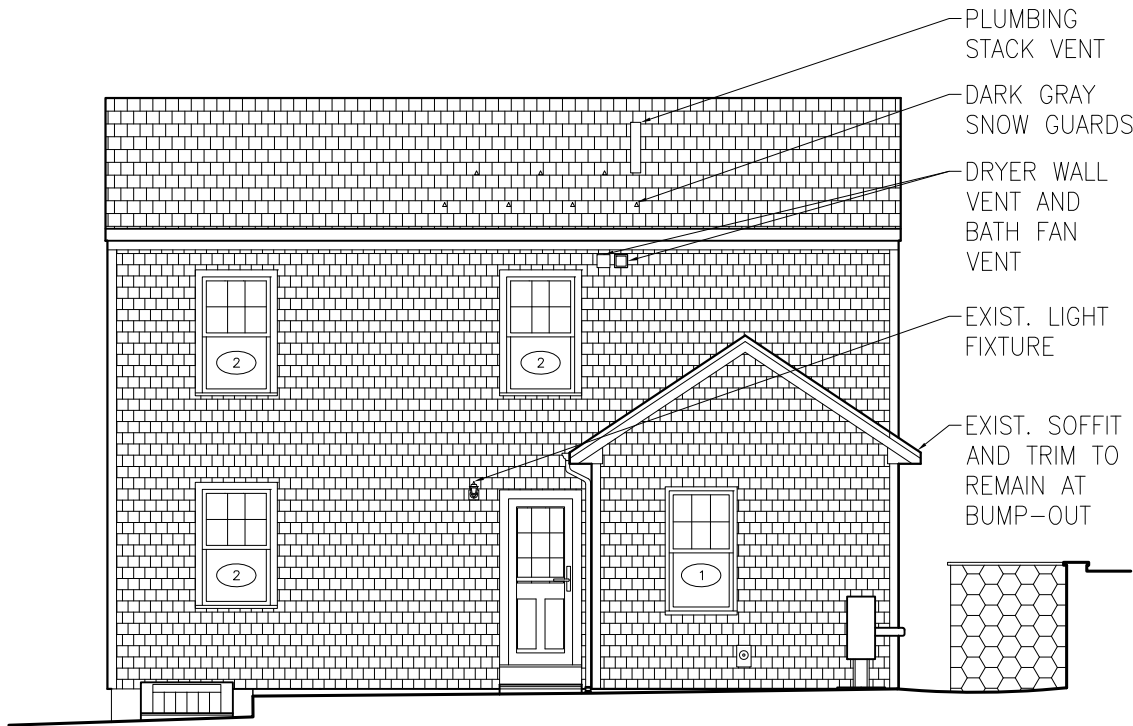
TYPICAL WINDOW



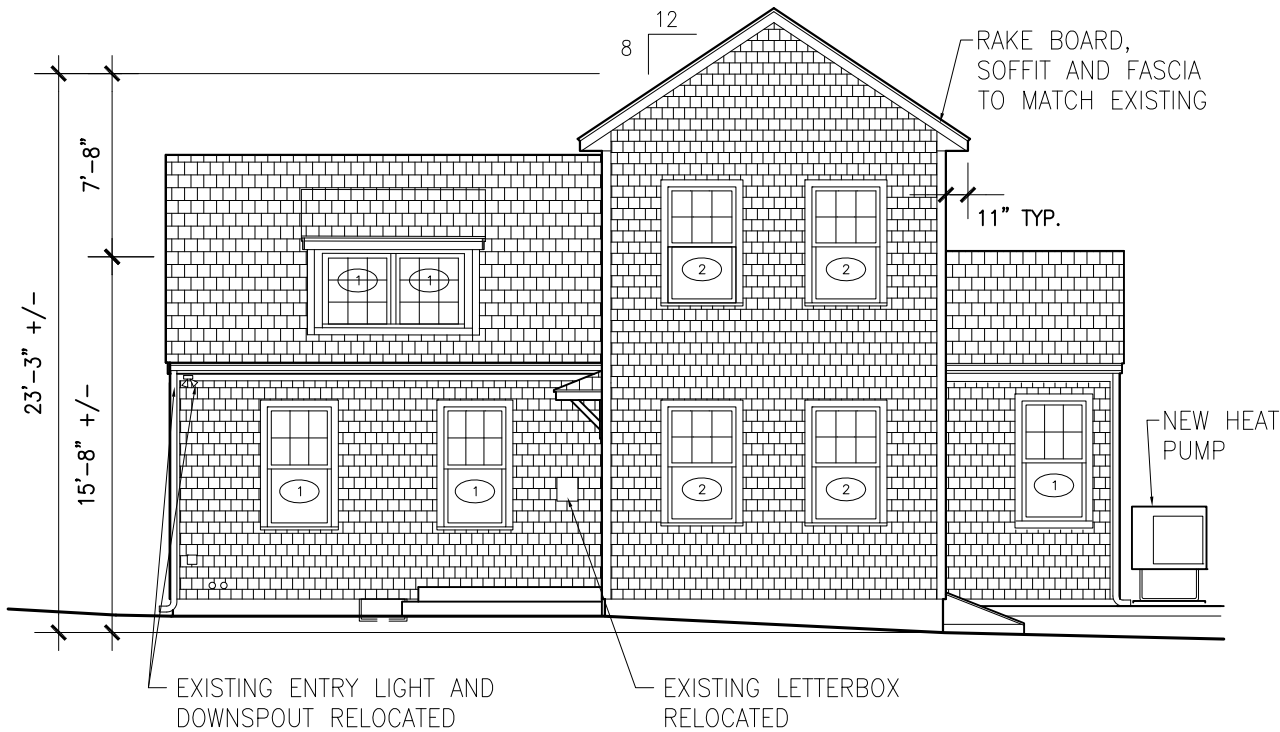
ENTRY CANOPY



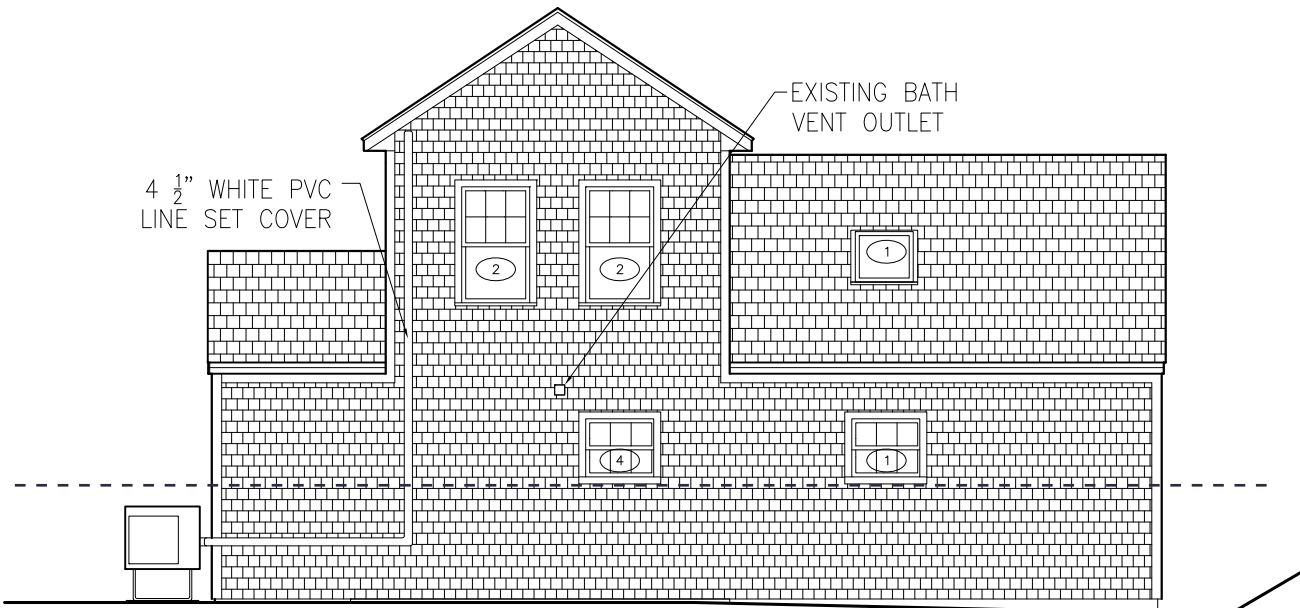
WEST (STREET) FACADE



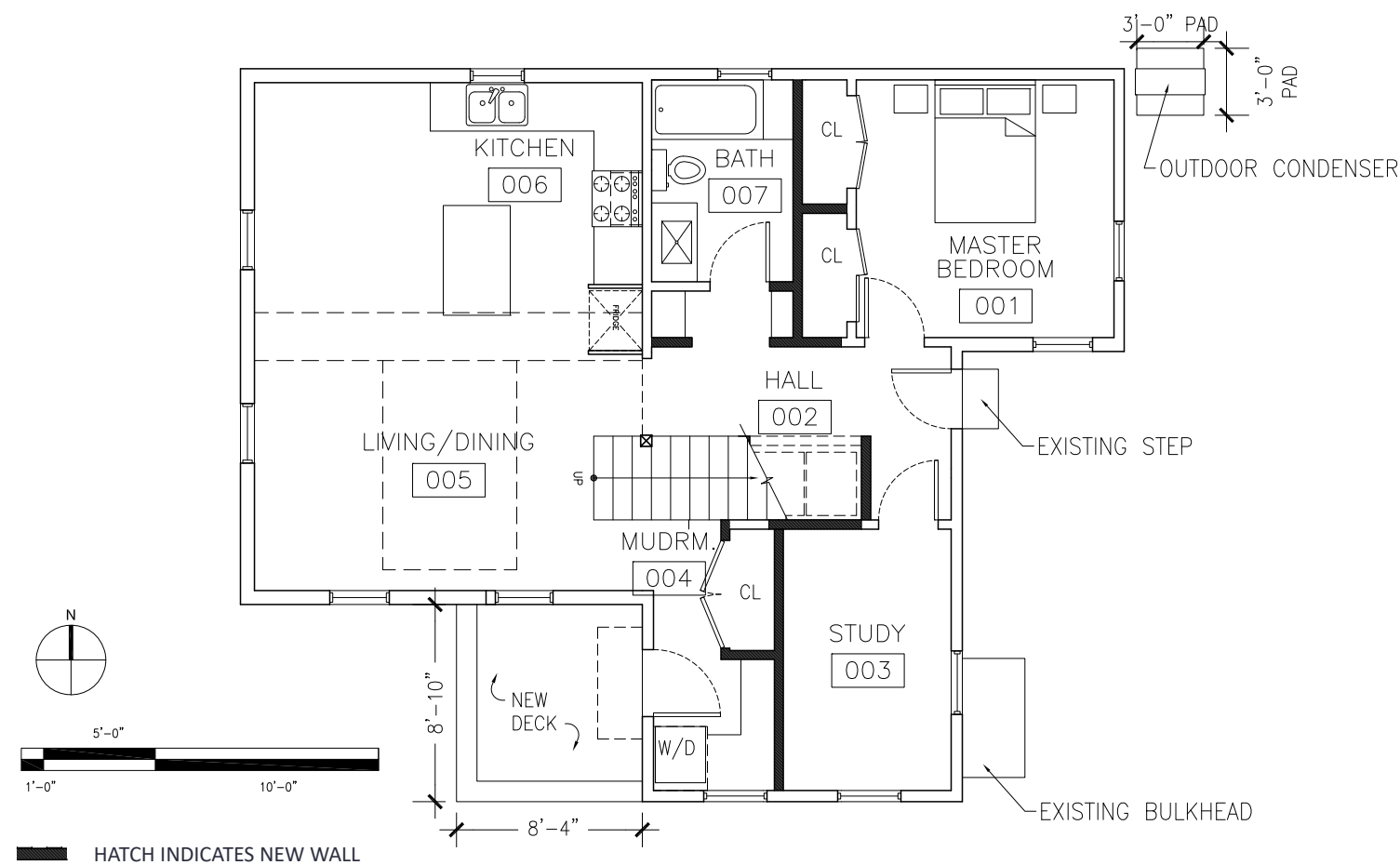
EAST (REAR) FACADE



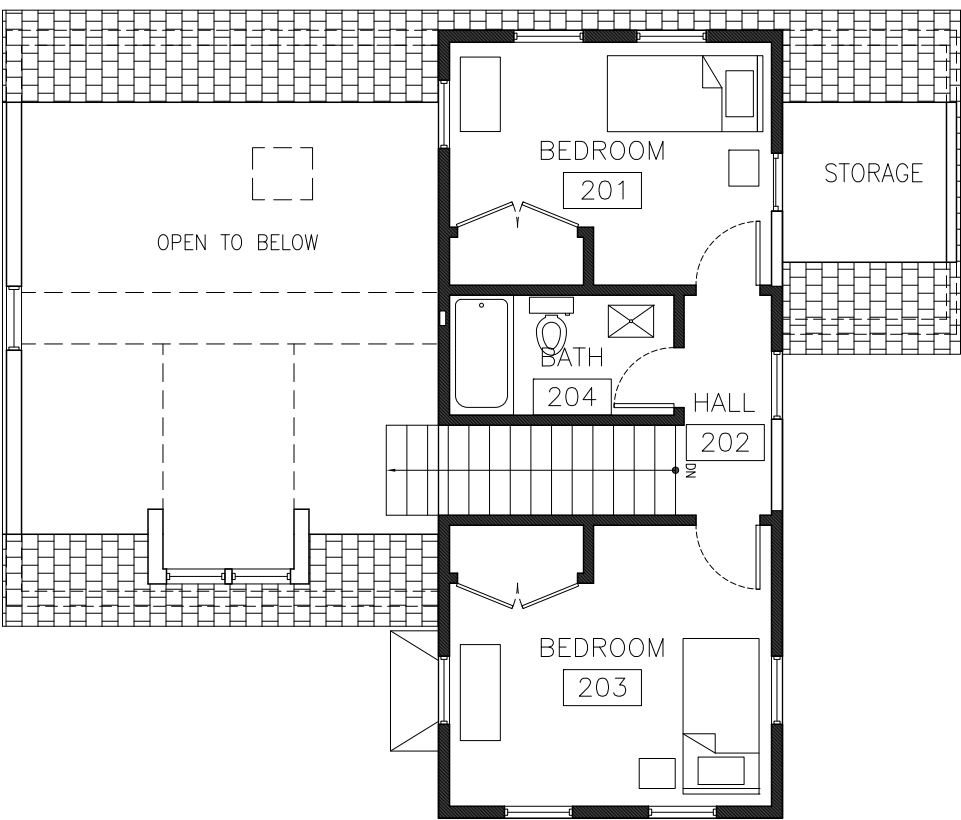
SOUTH FACADE



NORTH FACADE

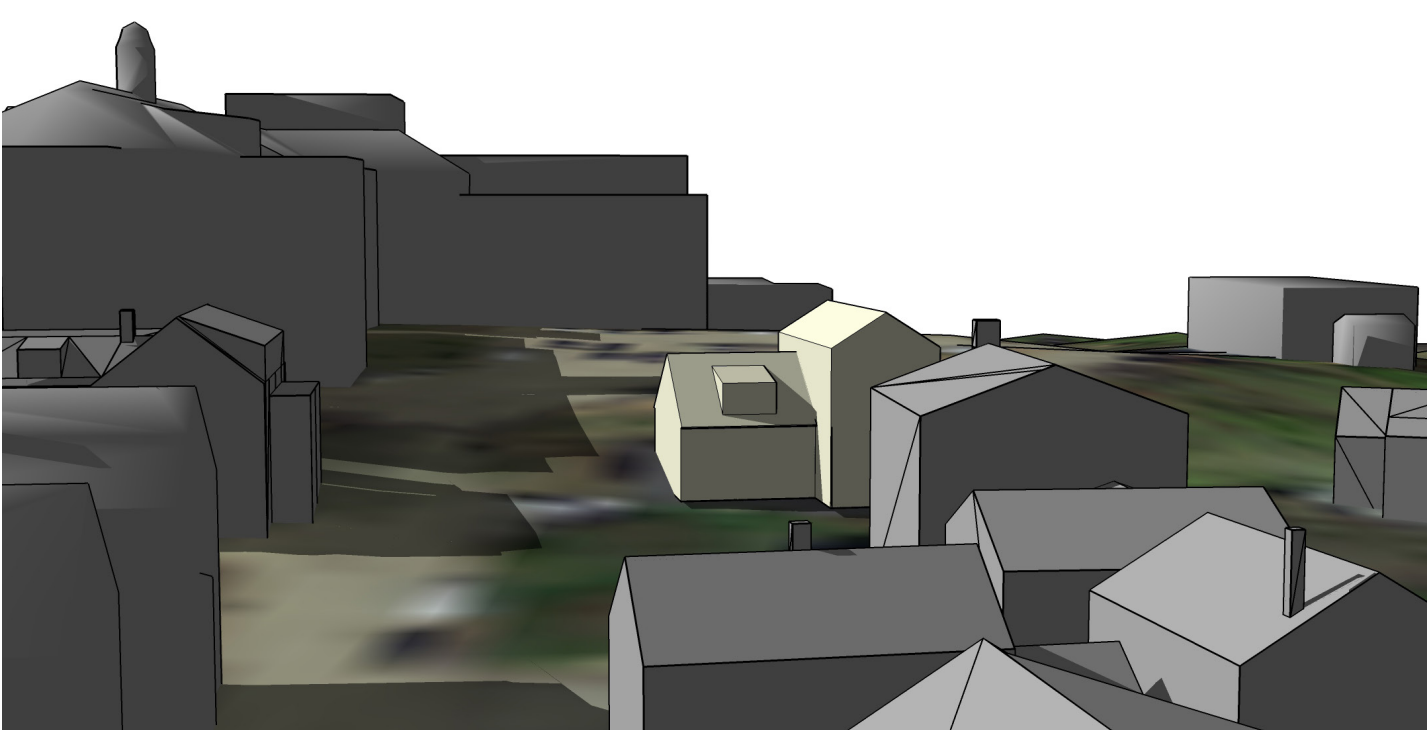


FIRST FLOOR PLAN, PROPOSED
SCALE 1/8" = 1'-0"

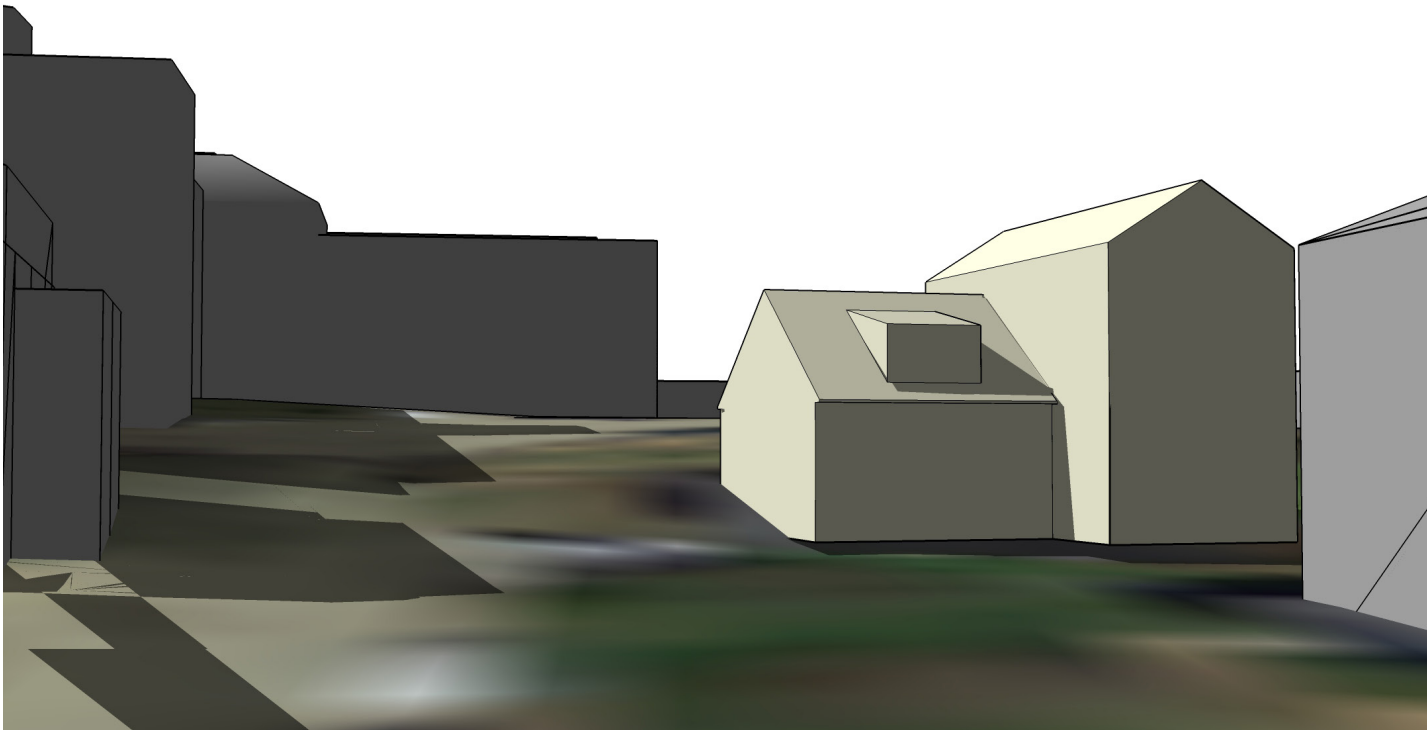


SECOND FLOOR PLAN, PROPOSED
SCALE 1/8" = 1'-0"

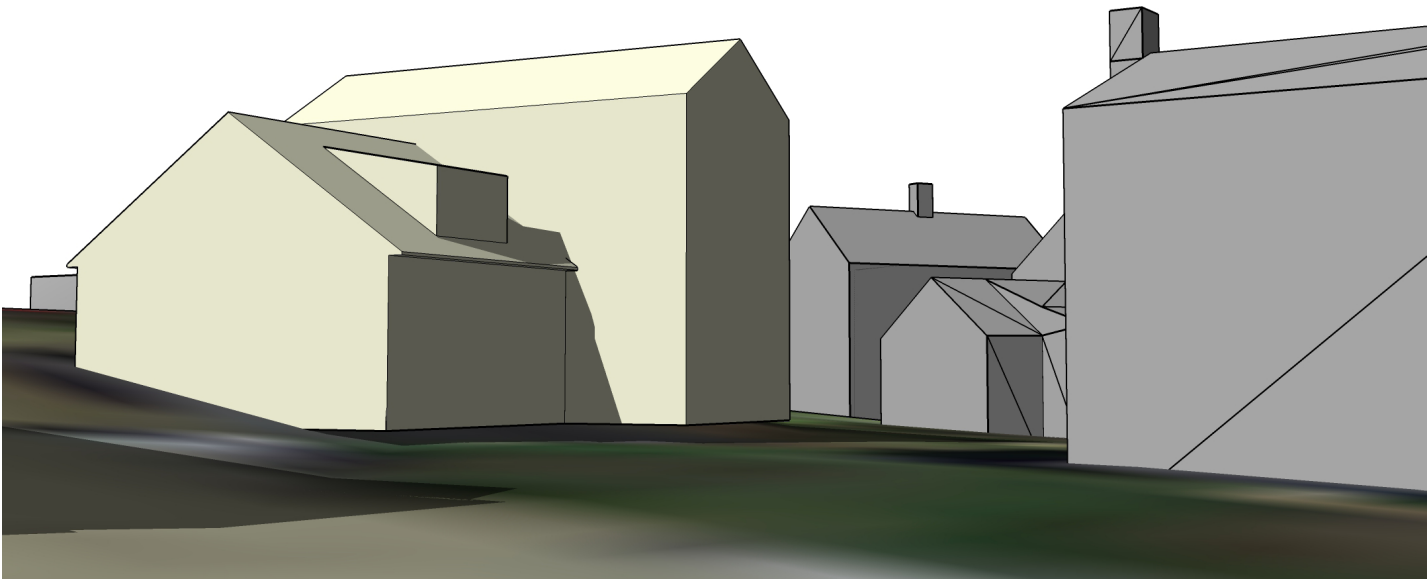
PROPOSED MASSING IN CONTEXT



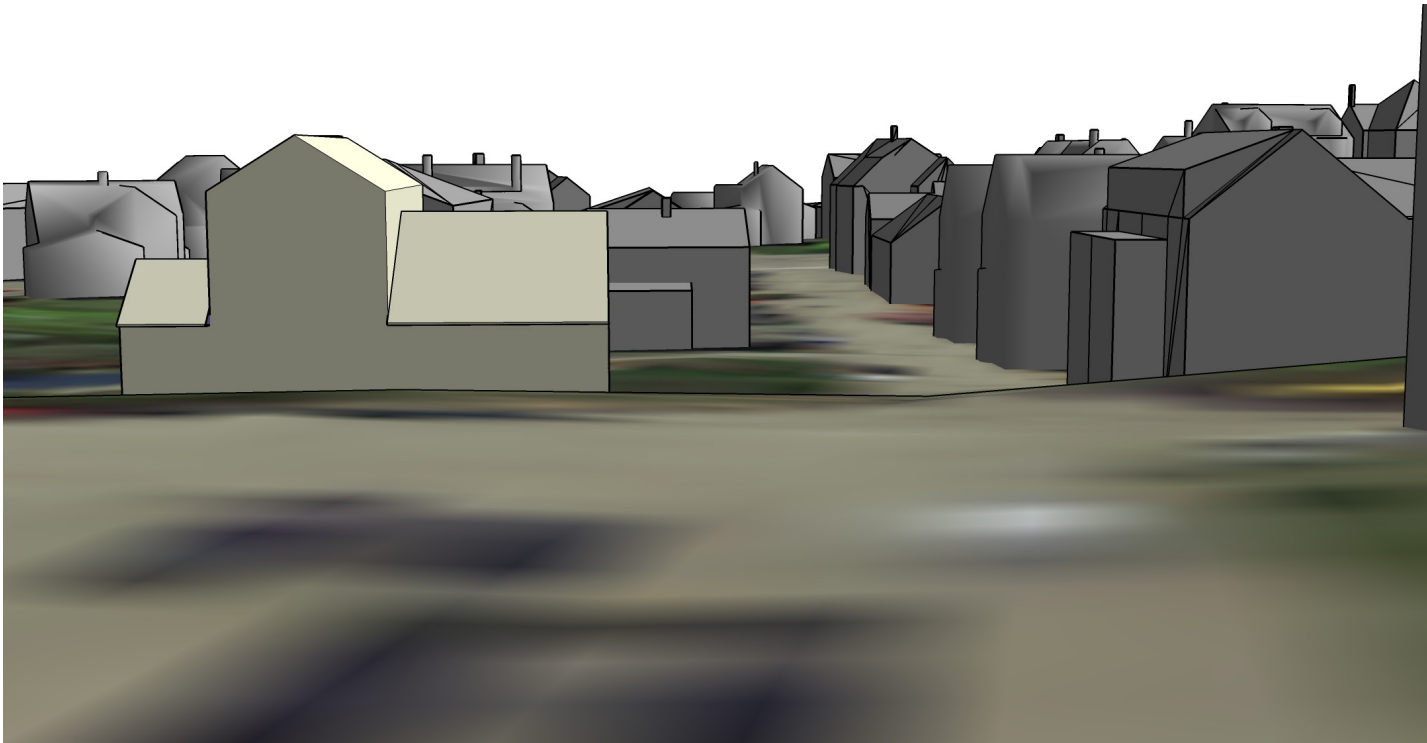
1) VIEW NORTH UP MT. VERNON STREET



2) VIEW NORTH UP MT. VERNON STREET



3) VIEW NORTHEAST AT HOUSE



4) VIEW SOUTH DOWN MT. VERNON STREET FROM CITY HALL PARKING LOT

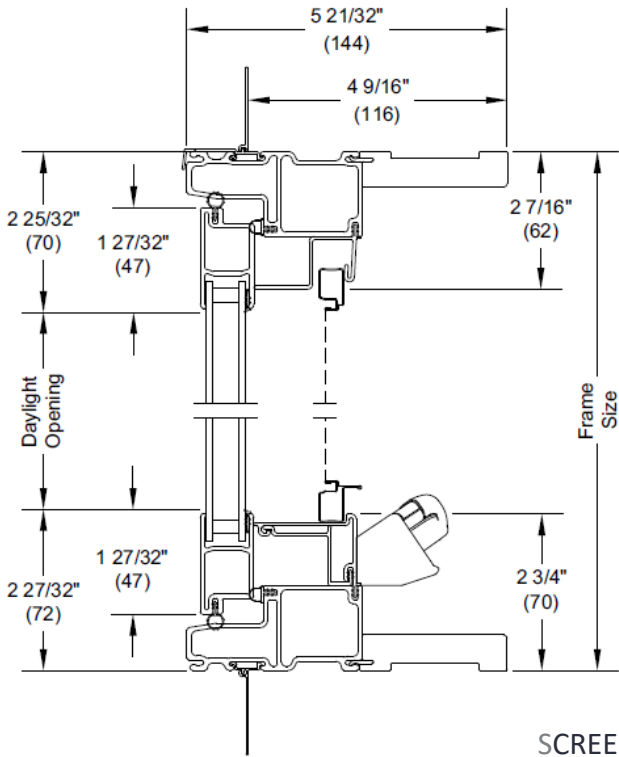
PROPOSED DOUBLE HUNG AND AWNING
WINDOWS AT NEW CONSTRUCTION



Essential Casement / Awning

ENERGY DATA	U-Factor
Insulated Glass - Low E1 - Air	0.33
Insulated Glass - Low E2 - Argon	0.29

All Ultrex Casement / Awning



SCREENS: FULL HEIGHT WITH EQUAL SASH DIVIDING BAR

EXISTING WINDOWS TO REMAIN



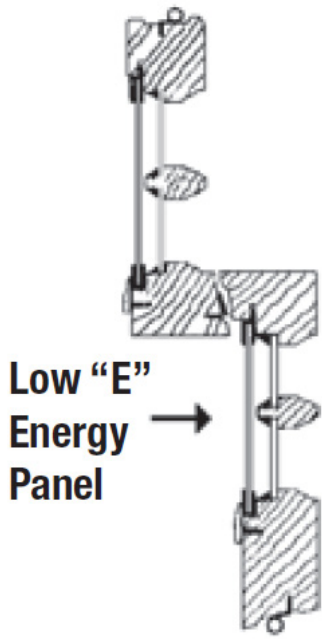
AUTHENTIC DIVIDED LIGHT – 1³/₈" Thick Sash

- Featuring Historically Correct Muntin Bars (⁵/₈" wide)
- Traditional Putty Glazed
- Available in 1/1 or Divided Light Layouts

Wood Sash – Clear Pine Interior, Preservative Treated, Primed Exterior

- Single Thick Glass (SSB)
- Single Thick Glass (SSB) w/Low-E Energy Panel applied

NFRC Ratings		
	U-Value	SHGC ♦
Single Thick Glass (SSB) w/Low-E Energy Panel		
1/1 Light	0.40	0.53
Authentic Divided Lt.	0.42	0.48





Unit Features

Essential Casement: ESCA
Essential Awning: ESAWN
Essential Casement Picture: ESCAP
Essential Casement Transom: ESCATR

For applicable certification and code information, refer to the Introduction and Product Performance chapter.

Frame and Sash:

- The frame and sash exteriors are made of Ultrex®, an advanced fiber reinforced material that is resistant to thermal conductance.
 - Exterior colors: Stone White, Pebble Gray, Bronze, Evergreen, Cashmere, or Ebony.
 - Interior colors: Stone White, Bronze, or Ebony.
- Split finishes are not available for Dark Interior options. Only Bronze interior/Bronze exterior and Ebony interior/Ebony exterior combinations are available.

Frame:

- Composite frame thickness is 1 1/2" (38). Total frame depth is 3 3/32" (79). Ultrex is 0.070" - 0.077" (2) thick.

Sash:

- Composite sash thickness is 15/16" (24). Ultrex is 0.070" - 0.077" (2) thick. Sash can be replaced by not reglazed.

Jamb Extension:

- Standard jamb depth is 2" (51). 4 9/16" (116) and 6 9/16" (167) maintenance free jamb extension available.
 - Available in Stone White, Bronze or Ebony. Default color will match the unit interior selection.
- Split finishes not available for Dark Interior options. Stone White jamb extension is available for all interior color selections.

Casement Hardware:

- Hardware finishes available in Stone White, Almond Frost, Brass, Satin Nickel, Matte Black, and Oil Rubbed Bronze
- Dual arm roto hardware factory installed on casement units
 - Roto gear hardware is an E-coated, high strength, low alloy steel
 - Call number 16 and 20, and frame sizes up to RO 25" (635) wide require dyad operators.
- The hinge track is stainless steel
 - hinge arm is E-coated high strength, low alloy steel
 - hinge shoe is injection molded with a stainless steel insert.
- A snubber on the jamb and stile, certain heights have 0, 1 or 2 sets, interlock the sash to the frame on the hinge side.
- Folding handle with removable snap fit covers.
- The locking hardware consists of multi-point locking mechanism that is actuated from a single point operation.
- Optional coastal hardware is available.
- Optional factory applied Window Opening Control Device is available. This device works in accordance to ASTM F2090-17 Standard Specification for Window Fall Prevention Devices with Emergency Escape (Egress) Release Mechanisms.
 - min size: 18 9/16" (417) x 23 1/2" (597) - max size: 35" (902) x 71" (1816)
 - Available in Stone White, Almost Frost, Oil Rubbed Bronze, and Matte Black finishes.
 - Tether housing finish, E-Gard only.

Awning Hardware:

- Hardware finishes available in Stone White, Almond Frost, Brass, Satin Nickel, Matte Black, and Oil Rubbed Bronze
- Scissors arm roto hardware factory installed on all awning units.
 - Roto hardware is an E-coated high strength, low alloy steel.
- The hinge track is stainless steel
 - hinge arm is E-coated high strength, low alloy steel
 - hinge shoe is injection molded with a stainless steel insert.
- Folding handle with removable snap fit covers
- A single point lock on each jamb/stile, with a removable escutcheon and handle
- Optional coastal hardware is available
- Optional factory installed or field applied stainless steel sash limiter is available



Unit Features Continued

Installation:

- Factory applied folding nailing fin
 - Optional installation brackets for masonry applications are available
 - Optional through jamb installation method
- Factory supplied field mulling kits are available for standard assemblies

Glazing:

- Dual-pane units are manufactured with an 11/16" (17) IG with Low E1, E2, E3, E3/ERS, or no coating including argon gas fill.
- Tempered glass and/or obscure glass, and California Fire glass (annealed exterior and tempered interior glazing configuration) are available as an option.
- Insulating glass is manufactured and tested.
- The glazing seal is a silicone bedding on the exterior surface and vinyl glazing seal on the interior surface in a one-piece sash.
- STC/OITC values are available for 3.1 mm thickness glass.
 - Optional 3.1/4.7 STC/OITC upgrade glass is available. See the Product Performance chapter for STC and OITC ratings.
- Decorative glass options include glue chip, rain, reed, narrow reed, frost, and tinted (bronze, gray or green). Decorative glass is not available with Low E1, Low E3/ERS, or STC/OITC.

Weather Strip:

- All units are dual weather stripped.
- The primary weather strip is a black extruded PVC foam filled bulb that attaches to all four sides of the frame.
- The secondary weather strip is a black extruded PVC hollow that is attached to the sash.

Insect Screen:

- Charcoal fiberglass (non-corrosive) screen cloth.
- Roll formed aluminum frame finish
 - Available in Stone White, Bronze or Ebony (matches unit interior color).
- Features a bottom rail lift and top rail mounted springs that allow it to be removed from the interior of the unit.

Grilles-Between-The-Glass (GBG):

- 23/32" (18) contoured aluminum bar placed between two panes of glass
- Patterns: Rectangular, 6 or 9 lite Prairie cut, or Cottage style
- Exterior colors: Stone White, Pebble Gray, Bronze, Evergreen, Cashmere, or Ebony
- Interior colors: Stone White, Bronze, or Ebony (matches unit interior color)
- GBG is not available with tinted glass.

Accessories:

- Field applied j-channel, a 1" (25) or a 3" (76) frame expander, or flush fin installation kit.
- Factory applied: sheet rock return 1/2" (13) or 5/8" (16) drywall, a 3/4" (19) receiver, a frame filler or a flush fin.
 - Sheet rock return and 3/4" receiver are available for all interior color selections.
- General: mull kits are available for field assembly. Kits include instructions, mull covers, mull plugs and brackets.


Exterior Casing:

- Non-integral to the unit.
- Fastened to the exterior wall with barb and kerf: 2" (51) brick mould as a full surround or with sill nosing.
- 3 1/2" (89) flat casing available as full surround or with sill nosing.
- Also available with 1" (25) ranch style sill and header overhang.

NOTE: NFRC values are now located on www.marvin.com

M-SERIES

SUBMITTAL DATA: MXZ-3C30NA2
MULTI-INDOOR INVERTER HEAT-PUMP SYSTEM



Job Name:

System Reference:

Date:



Outdoor Unit: MXZ-3C30NA2

- ACCESSORIES
- 3/8" x 1/2" Port Adapter (MAC-A454JP-E)
 - 1/2" x 3/8" Port Adapter (MAC-A455JP-E)
 - 1/2" x 5/8" Port Adapter (MAC-A456JP-E)
 - 1/4" x 3/8" Port Adapter (PAC-493PI)
 - 3/8" x 5/8" Port Adapter (PAC-SG76RJ-E)
 - M-NET Adapter (PAC-IF01MNT-E)
 - Base Heater (PAC-645BH-E)

(For data on specific indoor units, see the MXZ-C Technical and Service Manual.)

Specifications			Model Name
Unit Type			MXZ-3C30NA2
Cooling* (Non-ducted / Ducted)	Rated Capacity	Btu/h	28,400 / 27,400
	Capacity Range	Btu/h	12,600-28,400 / 12,600-27,400
	Rated Total Input	W	2,680 / 2,860
Heating at 47°F* (Non-ducted / Ducted)	Rated Capacity	Btu/h	28,600 / 27,600
	Capacity Range	Btu/h	11,400-36,000 / 11,400-35,000
	Rated Total Input	W	2,150 / 2,220
Heating at 17°F* (Non-ducted/Ducted)	Rated Capacity	Btu/h	16,000 / 15,100
	Rated Total Input	W	2,120 / 2,140
Electrical Requirements	Power Supply	Voltage, Phase, Hertz	208 / 230V, 1-Phase, 60 Hz
	Recommended Fuse/Breaker Size	A	25
	MCA	A	22.1
Voltage	Indoor - Outdoor S1-S2	V	AC 208 / 230
	Indoor - Outdoor S2-S3	V	DC ±24
Compressor		F.L.A.	INVERTER-driven Scroll Hermetic
Fan Motor (ECM)			2.43
Sound Pressure Level	Cooling		52
	Heating		56
External Dimensions (H x W x D)		In (mm)	31-11/32 x 37-13/32 x 13 (796 x 950 x 330)
Net Weight		Lbs (kg)	137 (62)
External Finish			Munsell 3.0Y 7.8/1.1
Refrigerant Pipe Size O.D.	Liquid (High Pressure)	In (mm)	1/4 (12.7)
	Gas (Low Pressure)		A: 1/2 (6.35) ; B,C: 3/8 (9.52)
Max. Refrigerant Line Length		Ft (m)	230 (70)
Max. Piping Length for Each Indoor Unit		Ft (m)	82 (25)
Max. Refrigerant Pipe Height Difference	If IDU is Above ODU	Ft (m)	49 (15)
	If IDU is Below ODU		49 (15)
Connection Method			Flared/Flared
Refrigerant			R410A

* Rating Conditions per AHRI Standard:

Cooling | Indoor: 80° F (27° C) DB / 67° F (19° C) WB
Cooling | Outdoor: 95° F (35° C) DB / 23.9° C (75° F) WB

Heating at 47°F | Indoor: 70° F (21° C) DB / 60° F (16° C) WB
Heating at 47°F | Outdoor: 47° F (8° C) DB / 43° F (6° C) WB

Heating at 17°F | Indoor: 70° F (21° C) DB
Heating at 17°F | Outdoor: 17° F (-8° C) DB / 15° F (-9° C) WB

DryerWallVent™

High-Performance

Low-Profile Termination

Lasting Beauty

DWV48

DWV4T

DWV4W

Well-built Aesthetics

Low profile and clean lines help enhance exterior beauty. With a 26 gauge Galvanized *and* powder coated steel body, the Dryer Wall Vent is the last vent a home will ever need.

Ease of Installation

Engineered for a quick, perfect fit in both retrofit and new construction, total replacement time can be as low as four minutes.

Airflow Efficiency

The lightweight damper and clean opening maximize efficiency and exceed all code requirements. Less airflow restriction helps save on energy bills, drying time and appliance wear.

Efficient, Low Profile Termination

- Lightweight Damper Reduces Airflow Restriction
- Balanced Magnets Deter Bird and Rodent Intrusion
- Damper Easily Accommodates Cleaning Equipment
- Excellent Design Features for Safe Venting

Lightweight Damper

Clean Lines Blend Into the Exterior

Intrusion Prevention Magnets

Durable Galvanized Steel

Powder Coated

Rubber Bumpers



In-O-Vate

Technologies Inc

888-443-7937

250 South Central Boulevard • Suite 207 • Jupiter FL 33458-8812 • Fax: 561-745-9723

The Dryerbox® People

www.DryerWallVent.com

HDC HEARING OCTOBER 2019

57 MT. VERNON STREET
PORTSMOUTH, NEW HAMPSHIRE

MANYPENNY | MURPHY ARCHITECTURE
73 COURT STREET, PORTSMOUTH, NH 03801 TEL: 603-319-8199

HVAC Lineset Cover



Lineset Covers

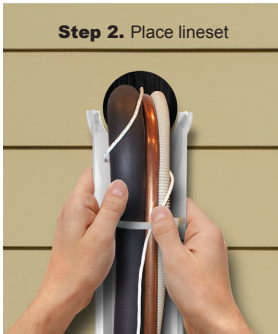
Professional grade ducting, protects and hides unsightly mini-split linesets in a snap!



Fortress: • Standard professional grade • Satin finish • More moderate price point

- 2 sizes.** Duct & fittings are available in both 3 1/2" or 4 1/2"
- 4 colors.** Choose white, ivory, brown or gray.
- 17 fittings.** Assures complete flexibility of installation.
- 8' lengths.** 6 lengths per box
- 6 fittings per box.** Efficient ordering and inventory.
- 1 year warranty.**

3-Step Installation



Application. Fortress® is perfect for minisplits, high velocity and conventional split air conditioning systems.

Strong. Fortress® ducting is extruded with our special formula rigid polyvinyl chloride, which is UV and weather resistant. The result is a long lasting quality product that will remain attractive and provide protection for many years.

Protective. Fortress® protects lineset, wiring and drain hose from weather, vandalism, pet and pest damage.

Easy to install. Fortress® installs quickly, and can be easily accessed for repairs or replacement of the lineset.

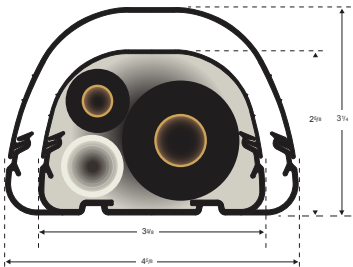
Stylish. Fortress® eliminates unsightly lineset used in a typical installation. Ducting is available in two lineset sizes and four neutral colors - white, ivory, brown and gray to compliment any residential or commercial building.

Paintable. Brush, spray or roller to match or compliment custom colors. Follow paint manufacturers recommendations for vinyl products.

Technical Information

Weather Resistance
Weather resistant PVC, UV stabilized & fire resistant. Tested to over 2,000 hours.

Temperature Range
-4°F to 140°F



Size Specifications
Choose duct size
LD92 or LD122

4 Colors for Residential & Commercial Applications





The Trusted Classic

LANDMARK®

Owning a Landmark roof brings peace of mind. Landmark's heavy weight and exceptional reliability make it a 'Best Buy' by a leading Consumer Magazine.



- Dual-layered for extra dimensionality and protection from the elements
- Offers the widest array of colors in the industry
- Independently certified as meeting the highest quality standards for roofing



Landmark, shown in Silver Birch

See next page for full color palette.

Strength with Style

LANDMARK®

- Dual-layer durability
- 228 lbs. per square
- Industry-best lifetime limited warranty
- 10-year StreakFighter® algae-resistance warranty



LANDMARK® PRO

- Dual-layer, high performance
- 250 lbs. per square
- Max Def color palette
- Industry-best lifetime limited warranty
- 15-year StreakFighter® algae-resistance warranty



LANDMARK® PREMIUM

- Dual-layer, high performance
- 300 lbs. per square
- Max Def color palette
- Industry-best lifetime limited warranty
- 15-year StreakFighter® algae-resistance warranty



LANDMARK SERIES

SPECIFICATIONS

- Two-piece laminated fiberglass-based construction
- Classic shades and dimensional appearance of natural wood or slate

For U.S. building code compliance, see product specification sheets.

CertainTeed products are tested to ensure the highest quality and comply with the following industry standards:

Fire Resistance:

- UL Class A
- UL certified to meet ASTM D3018 Type 1

Wind Resistance:

- UL certified to meet ASTM D3018 Type 1
- ASTM D3161 Class F

Tear Resistance:

- UL certified to meet ASTM D3462
- CSA standard A123.5

Wind Driven Rain Resistance:

- Miami-Dade Product Control Acceptance: Please reference www.certainteed.com to determine approved products by manufacturing location.

Quality Standards:

- ICC-ES-ESR-1389 & ESR-3537

WARRANTY

- Lifetime limited transferable warranty against manufacturing defects on residential applications
- 50-year limited transferable warranty against manufacturing defects on group-owned or commercial applications
- StreakFighter® algae-resistance warranty (10-year – Landmark, 15-year – Landmark PRO and Premium)
- 10-year SureStart™ protection
- 15-year 110 mph wind-resistance warranty
- Wind warranty upgrade to 130 mph available. CertainTeed starter and CertainTeed hip and ridge required

See actual warranty for specific details and limitations.