

**45 Richmond Street
Map 108 Lot 18**

To permit the following:

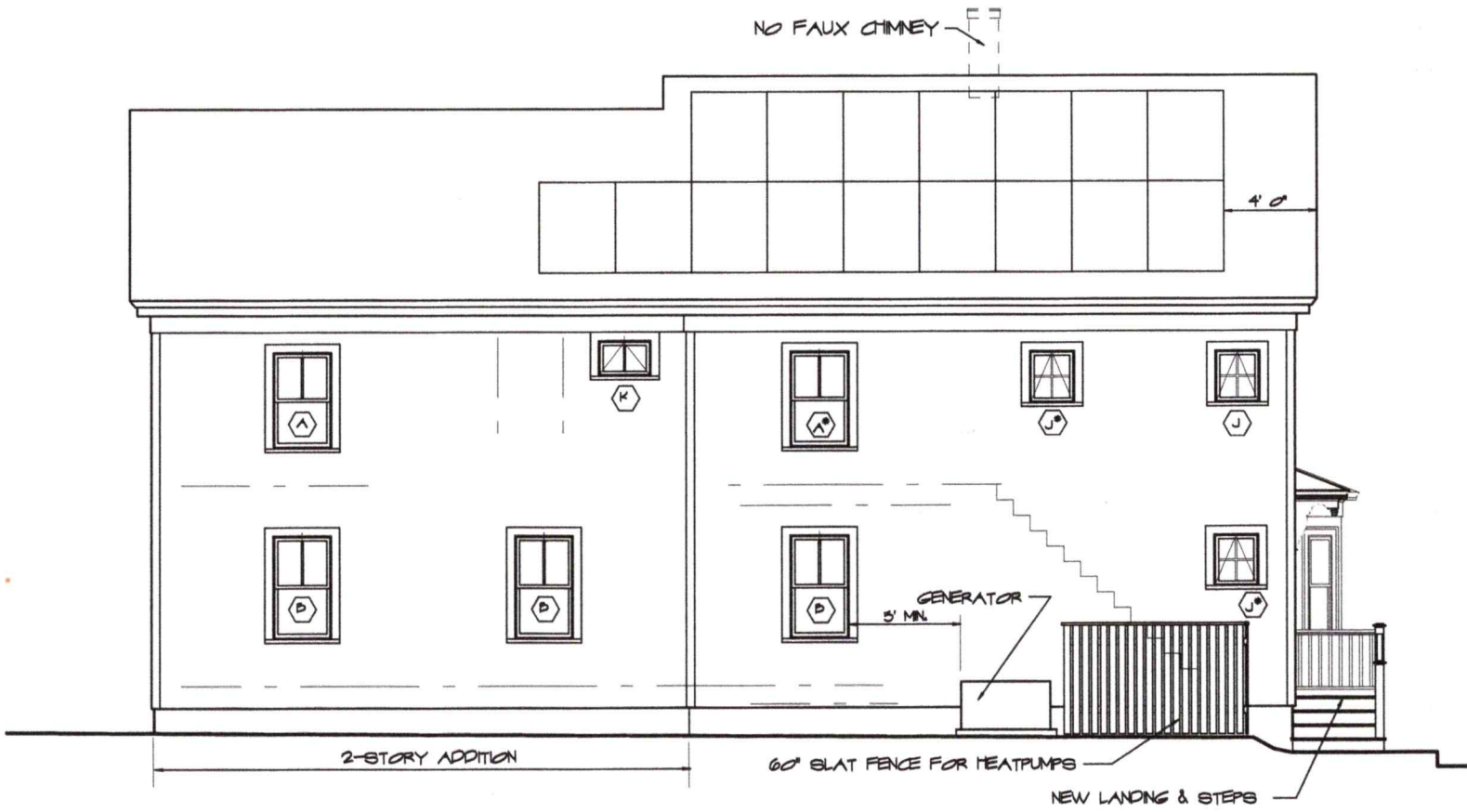
1. Generator with a Left Side Setback of +/- 8' 9" feet where 10' is required.

The undersigned agrees that the following circumstances exist.....

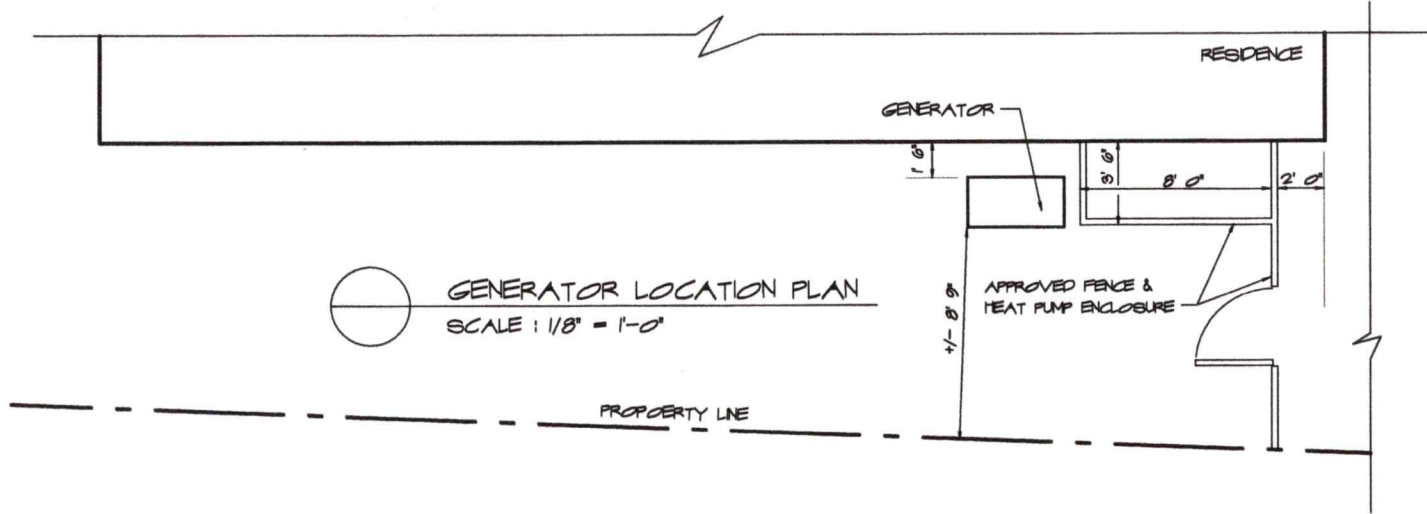
1. The Generator is located next to the approved Heat Pump enclosure and needs to be 18" off the residence and no closer than 5 feet from a window. This area is screened from the street with fencing.

Criteria for the Variance:

1. The Variance is not contrary to the public interest in that this location will minimize the public view of the Generator.
2. The Variance is consistent with the spirit of the ordinance in that this location has the least impact for both the public & owners.
3. Substantial justice will be done, as there are no other locations with a 5' clearance from a window and the 8' 9" setback is close to the required 10'.
4. This Variance will not diminish the value of surrounding properties.
5. The special condition of this property is the existing residence location. The Left Side Setback is just conforming & the Right Side has minimal space between the Residence & Driveway.



WEST, LEFTSIDE ELEVATION
SCALE: 1/8" = 1'-0"



GENERATOR LOCATION PLAN
SCALE: 1/8" = 1'-0"

45 RICHMOND STREET

801 Irlington St, Suite 32
Portsmouth, NH 03801
603-562-4387
archwhit@aol.com

ANNE WHITNEY ARCHITECT

Project:	Date:	
# 2008	2/14/24	



View from Richmond Street



Generator Location

45 Richmond Street

20/22/24 kW

GUARDIAN® SERIES Residential Standby Generators Air-Cooled Gas Engine

INCLUDES:

- True Power™ Electrical Technology
- Two-line multilingual digital LCD Evolution™ controller (English/Spanish/French/Portuguese)
- 200 amp service rated transfer switch available
- Electronic governor
- Standard Wi-Fi® connectivity
- System status & maintenance interval LED indicators
- Sound attenuated enclosure
- Flexible fuel line connector
- Natural gas or LP gas operation
- 5 Year limited warranty
- Listed and labeled for installation as close as 18 in (457 mm) to a structure.*
**Must be located away from doors, windows, and fresh air intakes and in accordance with local codes.*

Standby Power Rating

G007038-1, G007039-1, G007038-3, G007039-3 (Aluminum - Bisque) - 20 kW 60 Hz
 G007042-10, G007042-11, G007043-10, G007043-11 (Aluminum - Bisque) - 22 kW 60 Hz
 G007209-10, G007210-10 (Aluminum - Bisque) - 24 kW 60 Hz

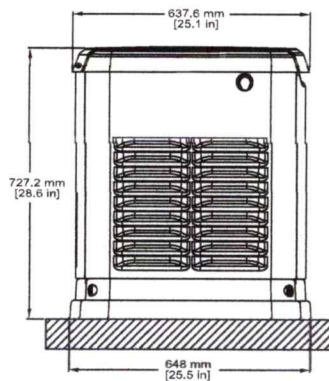


Product shown with optional fascia kit

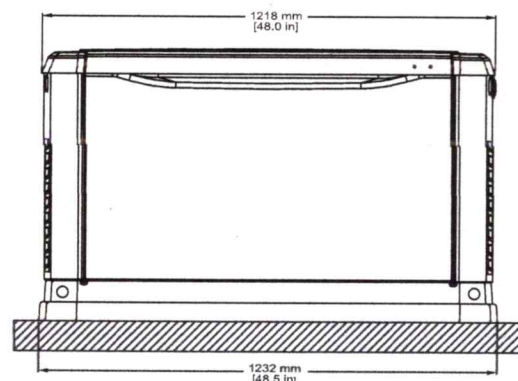


Dimensions & UPCs

Model	UPC
G007038	696471074185
G007039	696471074192
G007042	696471074208
G007043	696471074215
G007209	696471071511
G007210	696471084801



LEFT SIDE VIEW



FRONT VIEW

Dimensions shown are approximate. See installation manual for exact dimensions. DO NOT USE THESE DIMENSIONS FOR INSTALLATION PURPOSES.