

HISTORIC DISTRICT COMMISSION PUBLIC HEARING - JUNE 2020

134 SOUTH STREET IS AN EXISTING THREE-DECKER COLONIAL REVIVAL APARTMENT BUILDING IN PORTSMOUTH NEW HAMPSHIRE. BUILT IN APPROX 1900 WITH A CENTRAL ENTRANCE WITH INSET BALCONIES ABOVE. THE FIRST STORY IS DIFFERENTIATED FROM THOSE ABOVE WITH WIDE OVERLAPPING BOARDS AND ARCHITRAVE WINDOW HEADS.

THE DESIGN INTENT OF THE PROPOSED ALTERATIONS INTENDS TO:

- IMPROVE THE STREET APPEAL AND LONGEVITY OF THE BUILDING WITH COMPOSITE CHANNEL SIDING ON THE LOWER THIRD OF THE EXTERIOR.
- KEEP THE INTEGRITY OF THE WINDOWS, REPAIR AND PAINT, AND REPLACE STORM WINDOWS.
- CREATE IMPROVED ROOFTOP DECK ACCESS AND RAILING.
- REPLACE BASEMENT LEVEL ACCESS STRUCTURE AND GLASS BLOCK WINDOWS TO IMPROVE OVERALL EXTERIOR APPEARANCE.
- REPLACE EXTERIOR LIGHT FIXTURES.



BUILDING LOCATION

134 SOUTH STREET
134 South St.
Portsmouth, NH

COVER

Historic District Commission Public Hearing- June 2020

7 WALLINGFORD SQUARE
UNIT 2099
KITTELY, ME 03904
207.994.3104

**WINTER
HOLBEN**
architecture + design

15MAY2020
WINTER HOLBEN: BH/JH
SCALE: NTS
PROJECT NO: 20012

DRAWING NO.
1



134 SOUTH STREET
134 South St.
Portsmouth, NH

EXISTING PHOTOS

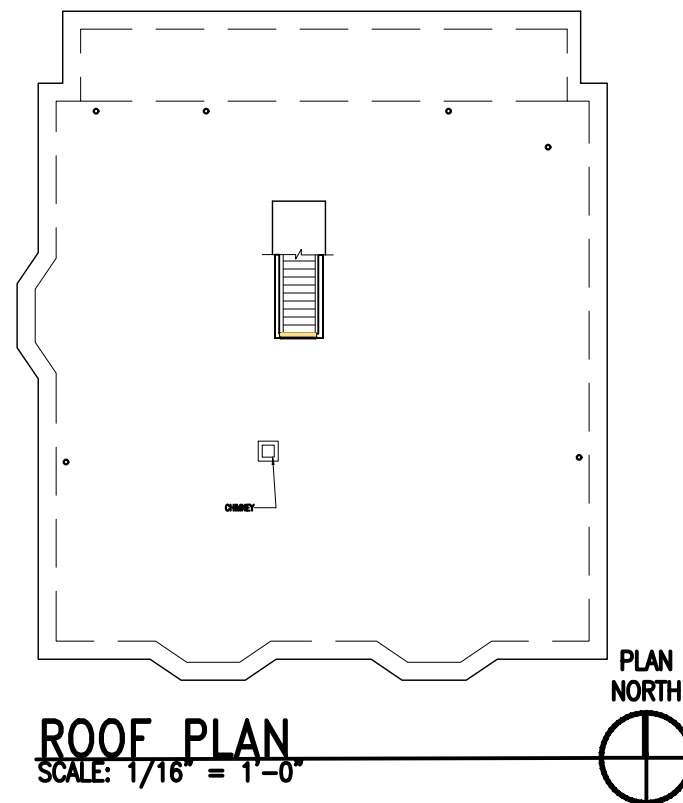
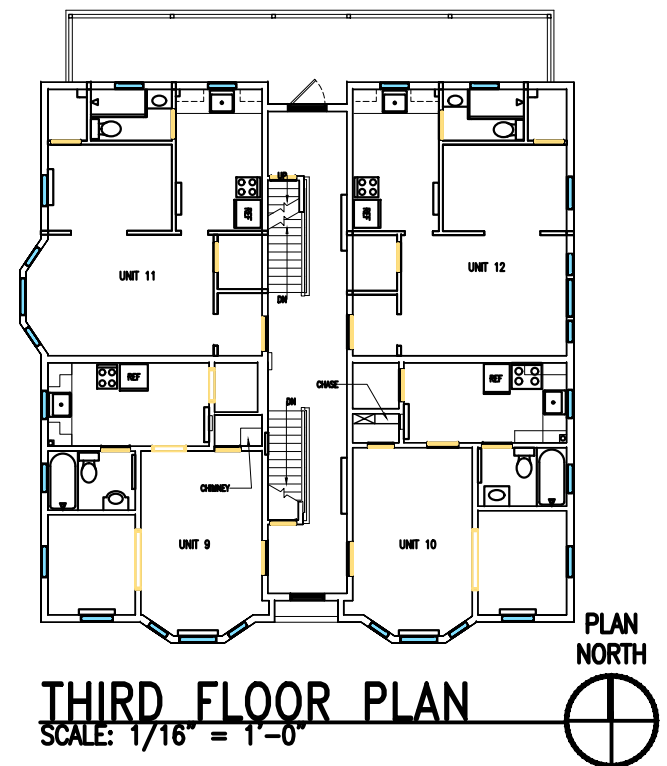
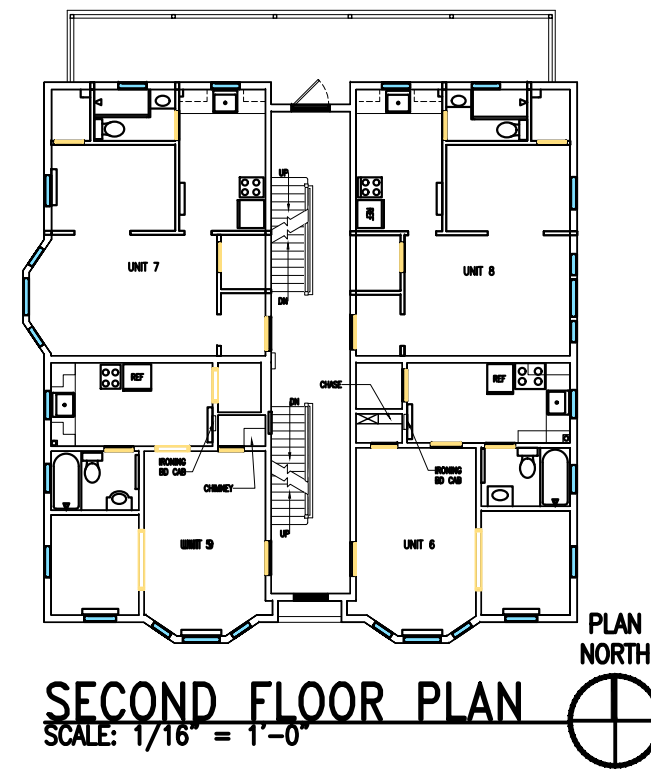
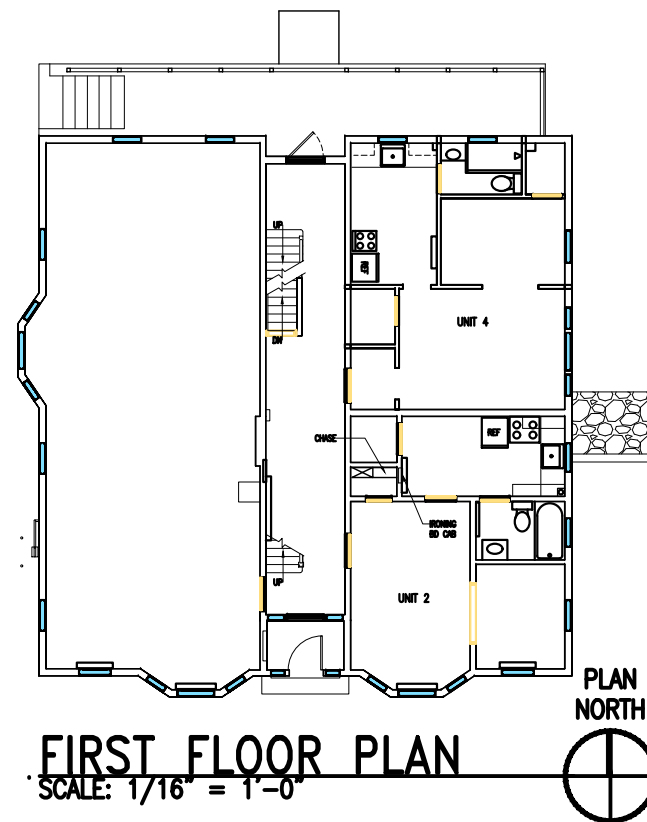
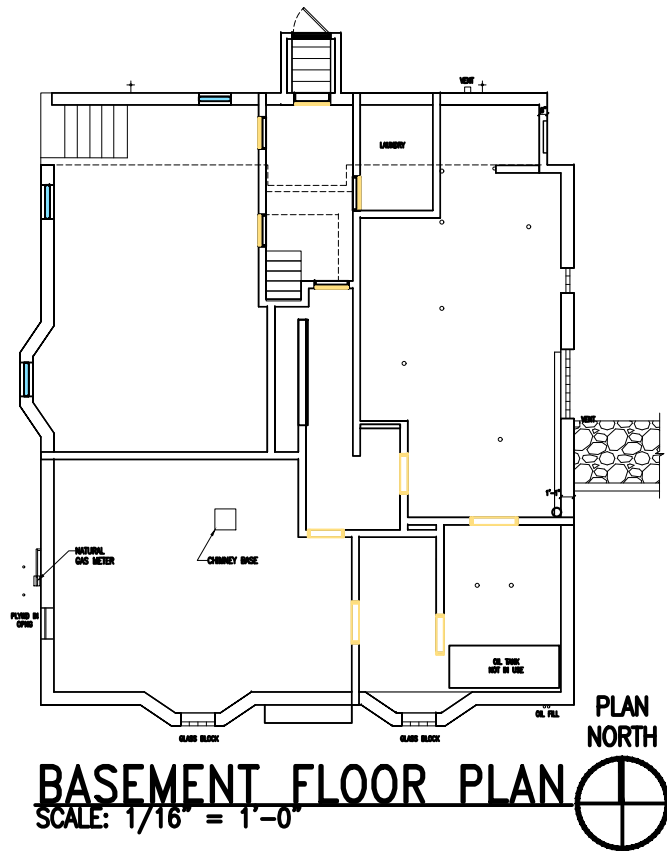
Historic District Commission Public Hearing- June 2020

7 WALLINGFORD SQUARE
UNIT 2099
KITTEERY, ME 03904
207.994.3104



15MAY2020
WINTER HOLBEN: BH/JH
SCALE: NTS
PROJECT NO: 20012

DRAWING NO.
2



134 SOUTH STREET
134 South St.
Portsmouth, NH

EXISTING FLOOR PLANS

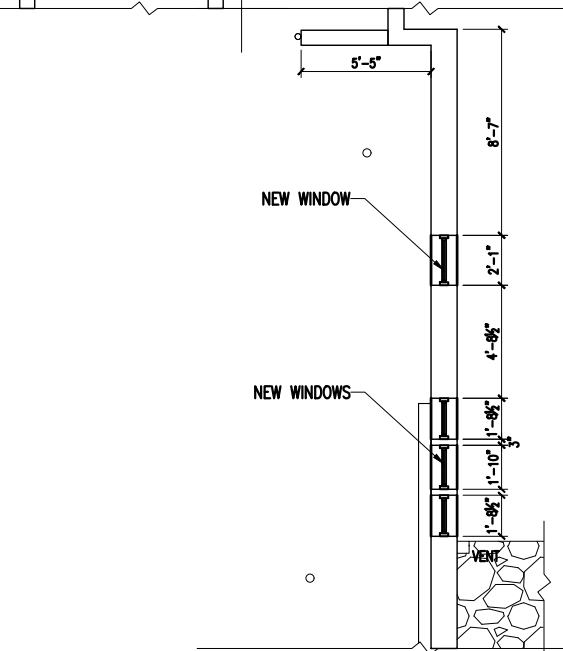
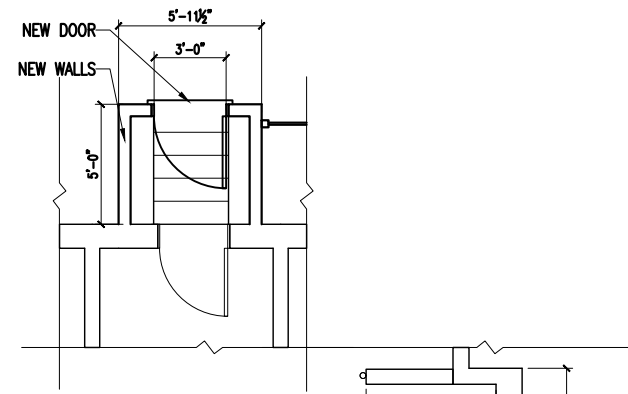
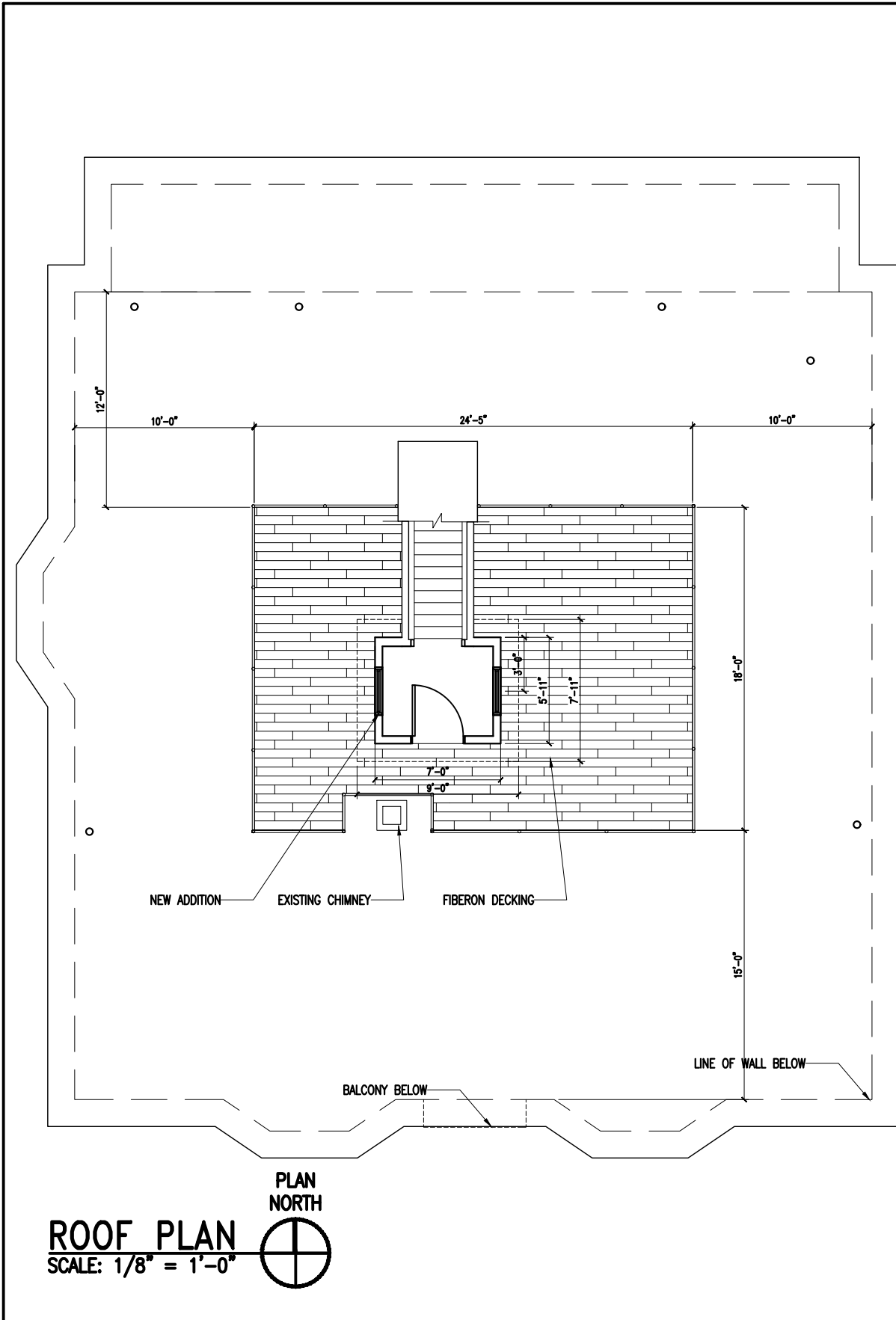
Historic District Commission Public Hearing- June 2020

7 WALLINGFORD SQUARE
UNIT 2099
KITTERY, ME 03904
207.994.3104

**WINTER
HOLBEN**
architecture + design

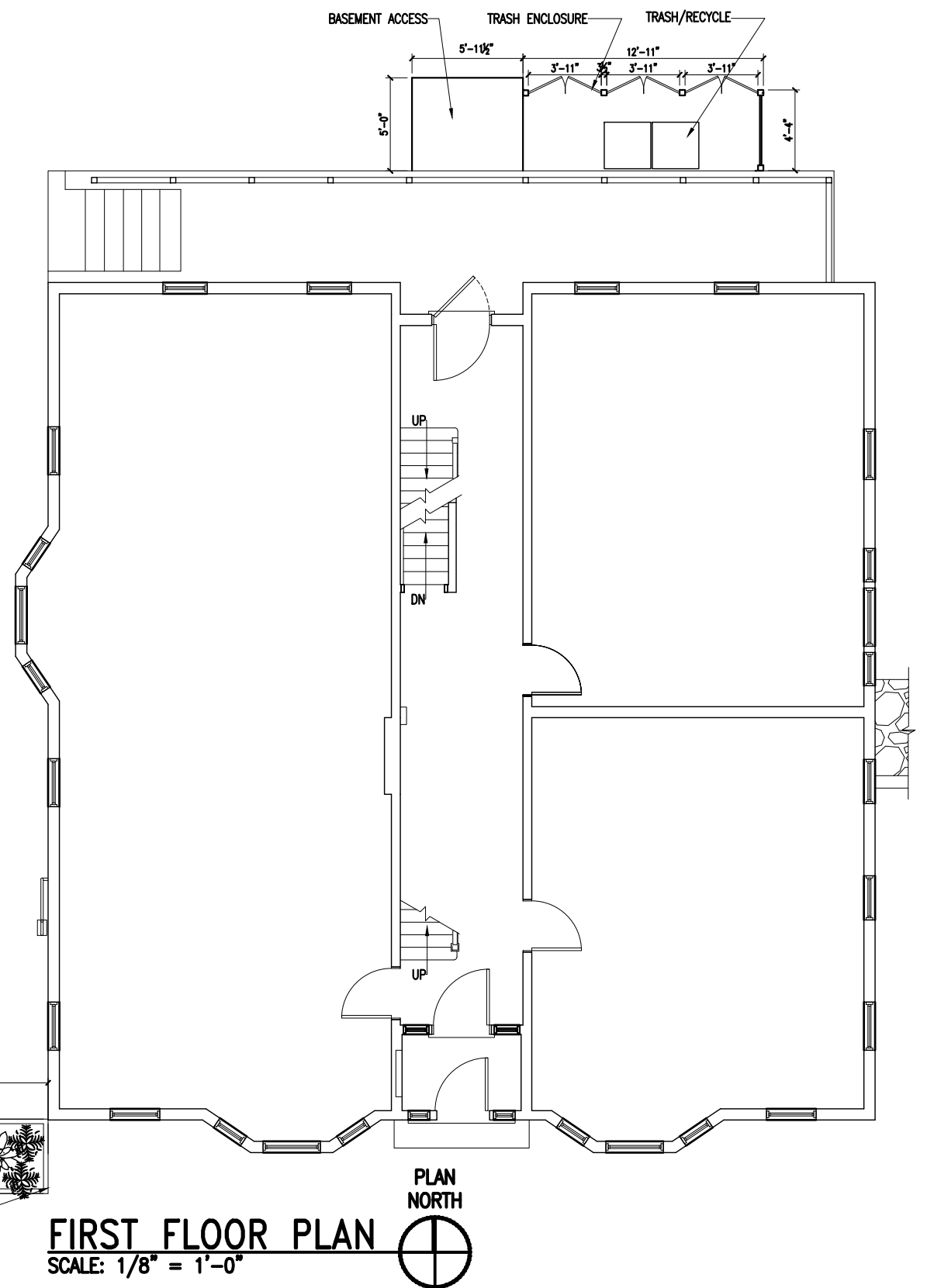
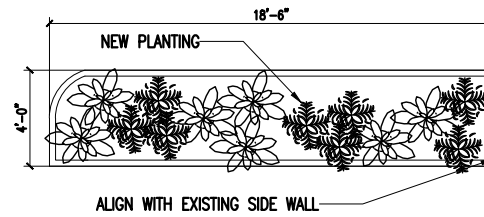
15MAY2020
WINTER HOLBEN: BH/JH
SCALE: 1/16"=1'-0"
PROJECT NO: 20012

DRAWING NO.
3



BASEMENT PLAN
SCALE: 1/8" = 1'-0"

PLAN NORTH



134 SOUTH STREET
134 South St.
Portsmouth, NH

SITE AND ROOF PLAN
Historic District Commission Public Hearing- June 2020

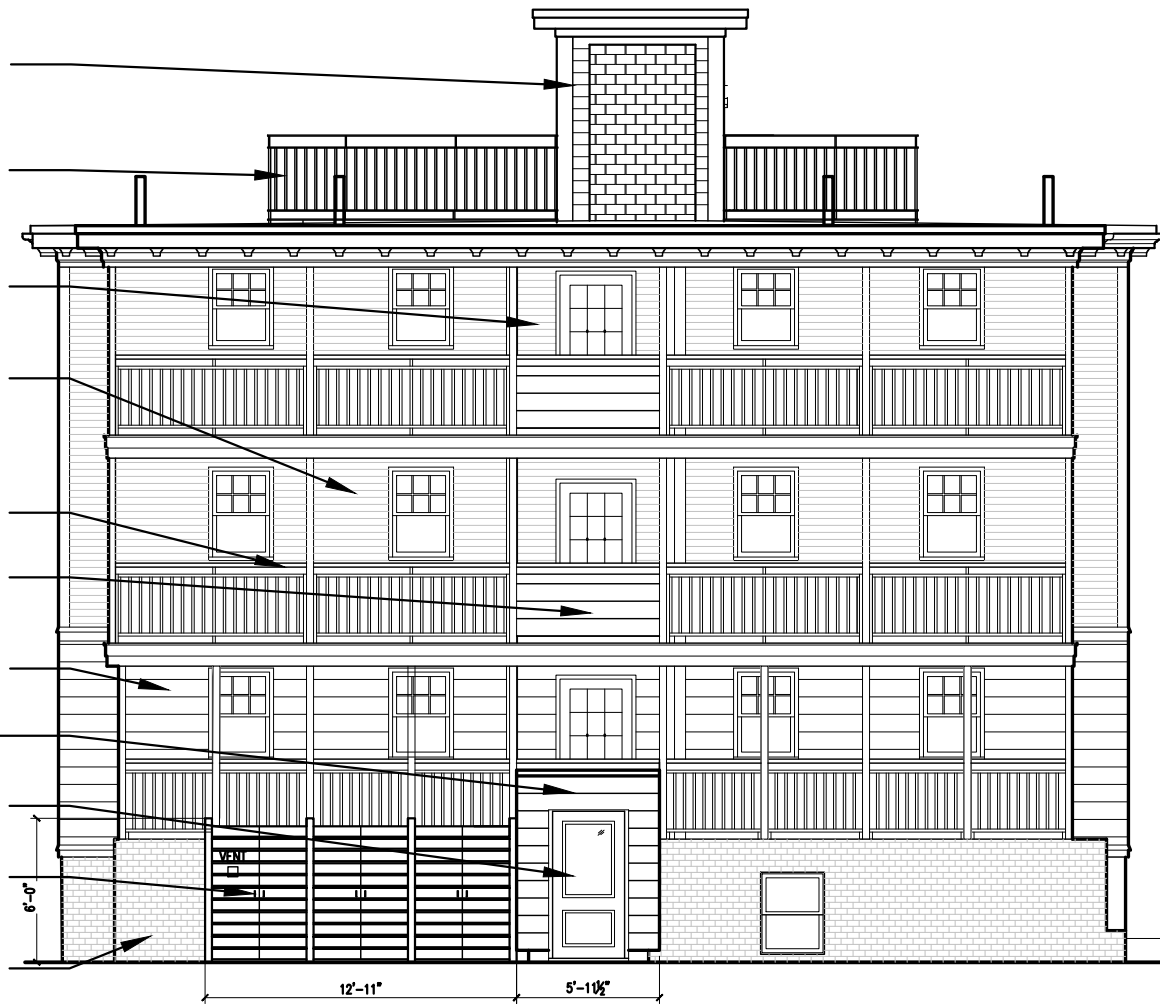
7 WALLINGFORD SQUARE
UNIT 2099
KITTELY, ME 03904
207.994.3104

**WINTER
HOLBEN**
architecture + design

15MAY2020
WINTER HOLBEN: BH/JH
SCALE: 1/8"-1'-0"
PROJECT NO: 20012

DRAWING NO.
4

- T.O. STAIR ENTRY
ELEV=34'-6 3/4"
- T.O. ROOF
ELEV=(25'-6 3/4")
- THIRD FLOOR
ELEV=(16'-10")
- SECOND FLOOR
ELEV=(8'-2")
- FIRST FLOOR
ELEV=(0'-0")
- BASEMENT
ELEV=(-7'-11 1/4")



NORTH ELEVATION
SCALE: 1/8" = 1'-0"



SOUTH ELEVATION
SCALE: 1/8" = 1'-0"

- ADDITION W/ BORAL SHIPLAP SIDING & TRIM
- METAL RAILING & GUARDRAIL
- NEW GLASS DOOR
- FIBERON CLADDING
- EXISTING SIDING TO REMAIN
- METAL RAILING W/ WOOD CAP
- NEW LIGHT FIXTURE ON BOTH SIDES OF ENTRY DOOR
- BORAL CHANNEL SIDING
- EXISTING BRICK

134 SOUTH STREET
134 South St.
Portsmouth, NH

EXTERIOR ELEVATIONS

7 WALLINGFORD SQUARE
UNIT 2099
KITTELY, ME 03904
207.994.3104

**WINTER
HOLBEN**
architecture + design

15MAY2020
WINTER HOLBEN: BH/JH
SCALE: NTS
PROJECT NO: 20012

DRAWING NO.
5

Historic District Commission Public Hearing- June 2020



T.O. STAIR ENTRY
ELEV=34'-6 3/4"

T.O. ROOF
ELEV=(25'-6 3/4")

THIRD FLOOR
ELEV=(16'-10")

SECOND FLOOR
ELEV=(8'-2")

FIRST FLOOR
ELEV=(0'-0")

BASEMENT
ELEV=(-7'-11 1/4")

WEST ELEVATION
SCALE: 1/8" = 1'-0"

134 SOUTH STREET
134 South St.
Portsmouth, NH

EXTERIOR ELEVATIONS

Historic District Commission Public Hearing- June 2020

7 WALLINGFORD SQUARE
UNIT 2099
KITTELY, ME 03904
207.994.3104

**WINTER
HOLBEN**
architecture + design

15MAY2020
WINTER HOLBEN: BH/JH
SCALE: NTS
PROJECT NO: 20012

DRAWING NO.
6

T.O. STAIR ENTRY
ELEV=34'-6 3/4"

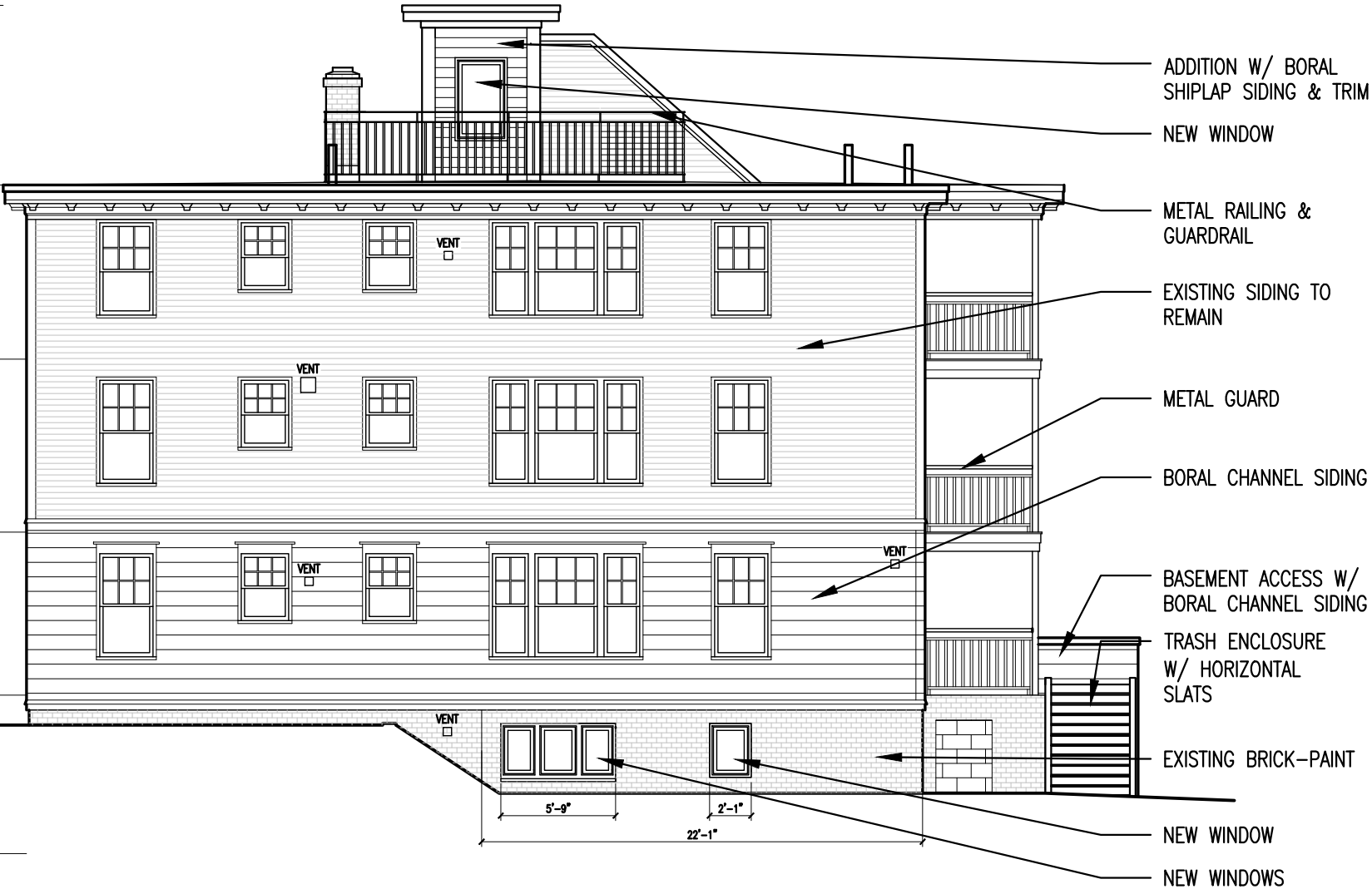
T.O. ROOF
ELEV=(25'-6 3/4")

THIRD FLOOR
ELEV=(16'-10")

SECOND FLOOR
ELEV=(8'-2")

FIRST FLOOR
ELEV=(0'-0")

BASEMENT
ELEV=(-7'-11 1/4")



ROOFTOP FULL LITE MARVIN SIGNATURE DOOR

EAST ELEVATION
SCALE: 1/8" = 1'-0"



CAPTURE OUTDOOR WALL SCNCE
BY NORWELL LIGHTING
4 3/4" W x 11" H x 8" D



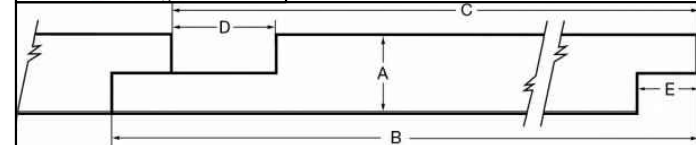
Features of the Elevate Awning Window

- Available in heights up to 4 feet or widths up to 4 feet
- Narrow frame replacement option is available to fit seamlessly into existing window openings
- Dual-point locking system ensures a tight seal and security from top to bottom
- Available with IZ3 coastal/hurricane certification
- CE certified

BASEMENT AWNING WINDOW- MARVIN WINDOWS

Nominal Size	Actual Thickness (A)	Actual Width (B)	Reveal (C)	Channel (D)	Tongue (E)
1 x 6	0.6875"	5.50"	4.969"	0.969"	0.531"
1 x 8	0.6875"	7.25"	6.719"	0.969"	0.531"
1 x 10	0.6875"	9.25"	8.719"	0.969"	0.531"

TruExterior
Siding & Trim



CHANNEL SIDING ON LOWER HALF OF BUILDING

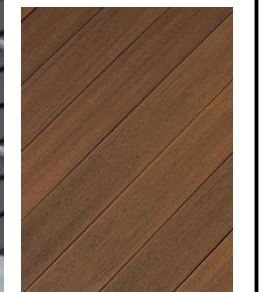
CHANNEL SIDING



SHIPLAP BORAL SIDING AT ROOFTOP ADDITION



FIBERON COMPOSITE CONCORDIA CLADDING/DECKING



134 SOUTH STREET
134 South St.
Portsmouth, NH

ELEVATION AND PROPOSED MATERIALS

Historic District Commission Public Hearing- June 2020

7 WALLINGFORD SQUARE
UNIT 2099
KITTELY, ME 03904
207.994.3104

**WINTER
HOLBEN**
architecture + design

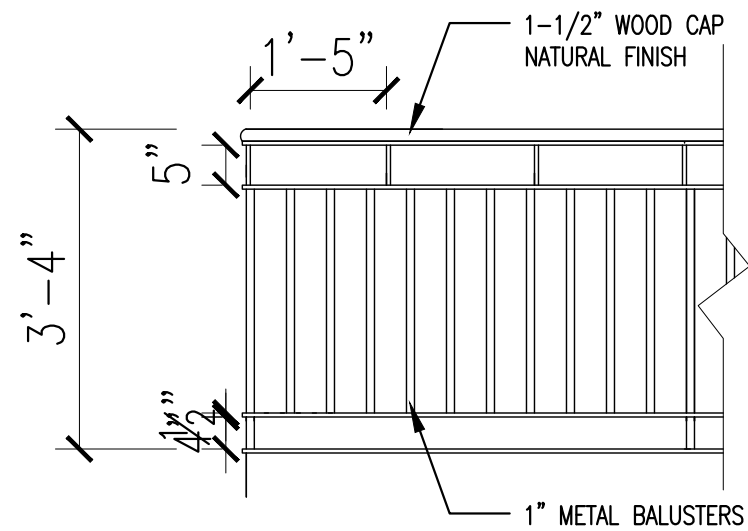
15MAY2020
WINTER HOLBEN: BH/JH
SCALE: 1/8"-1'-0"
PROJECT NO: 20012

DRAWING NO.

7

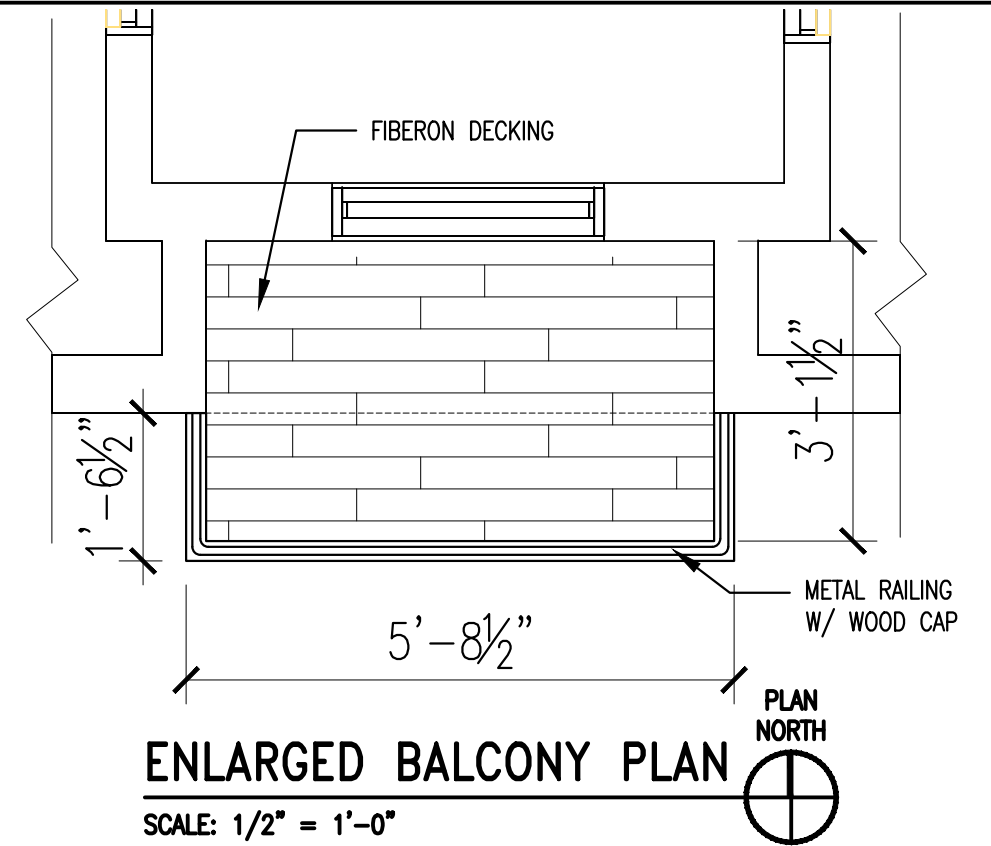


BALCONY RAILING



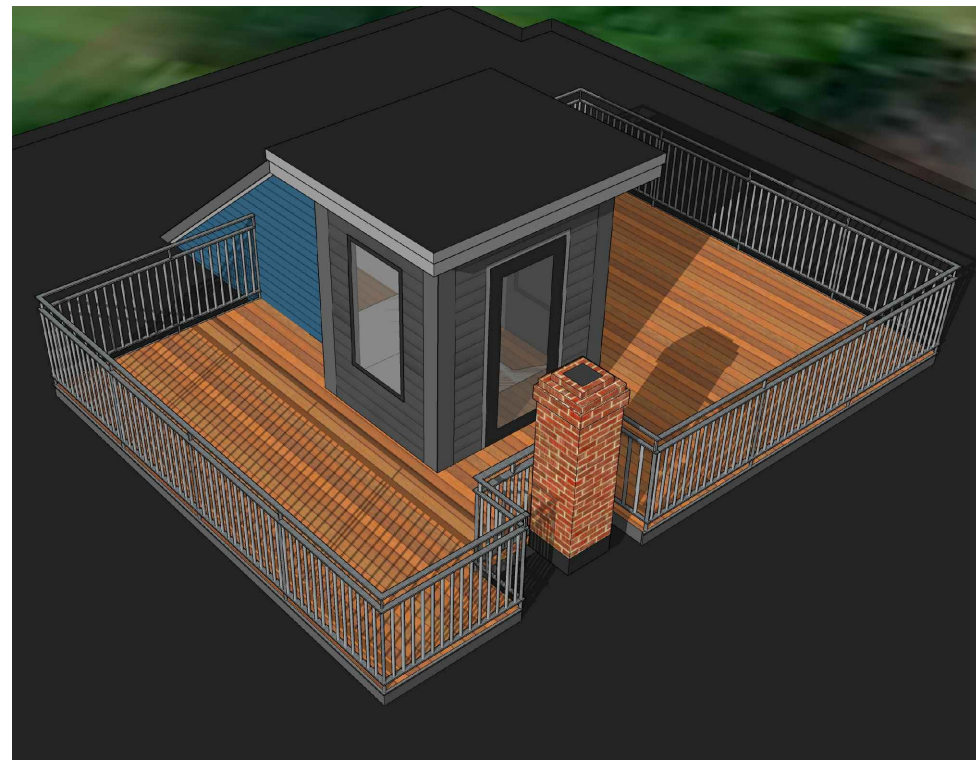
RAILING DETAIL

SCALE: 1/2" = 1'-0"

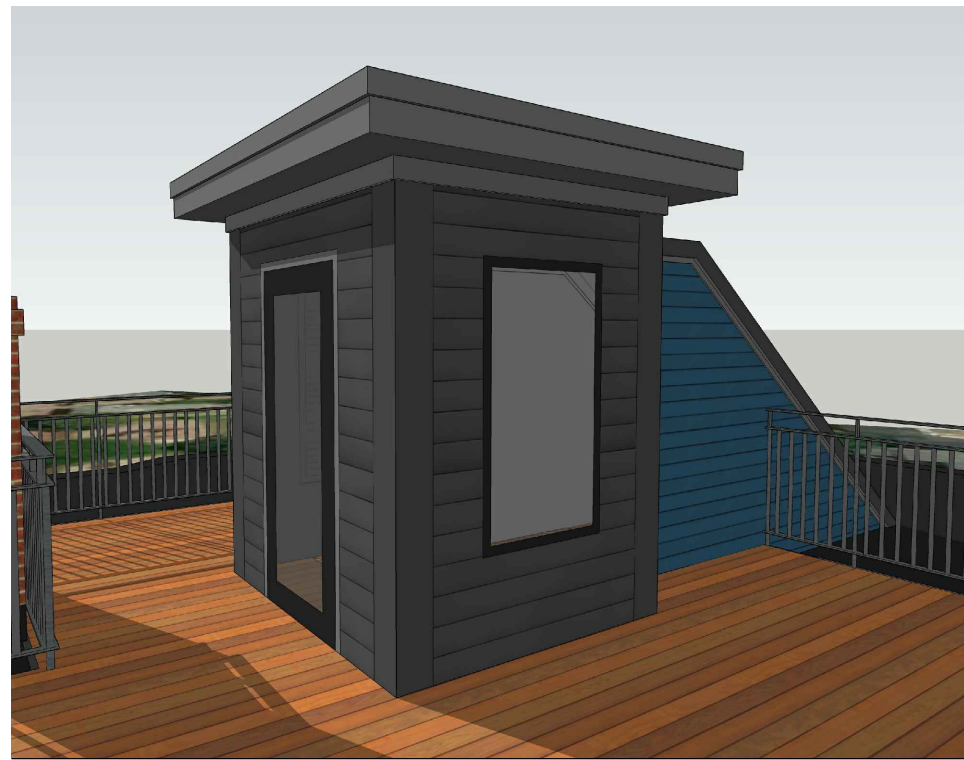


ENLARGED BALCONY PLAN

SCALE: 1/2" = 1'-0"



ROOF TOP DECK



ROOF TOP STRUCTURE ADDITION

134 SOUTH STREET
 134 South St.
 Portsmouth, NH

DETAIL VIEWS

Historic District Commission Public Hearing- June 2020

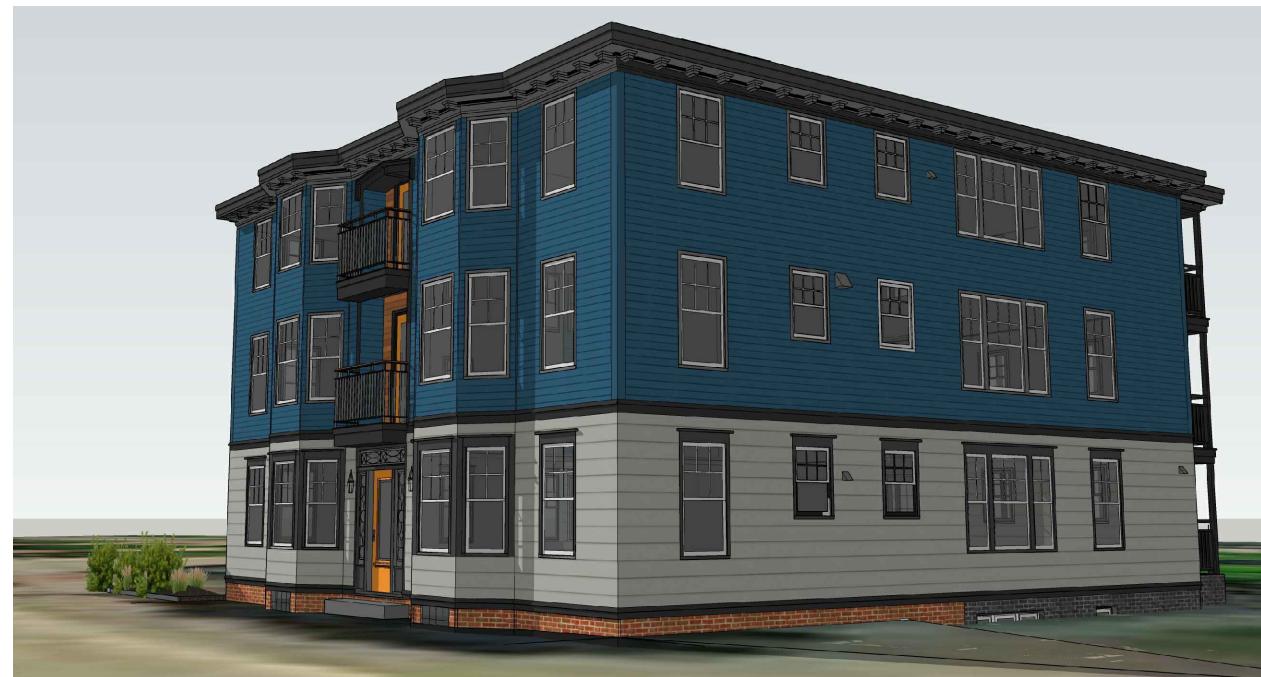
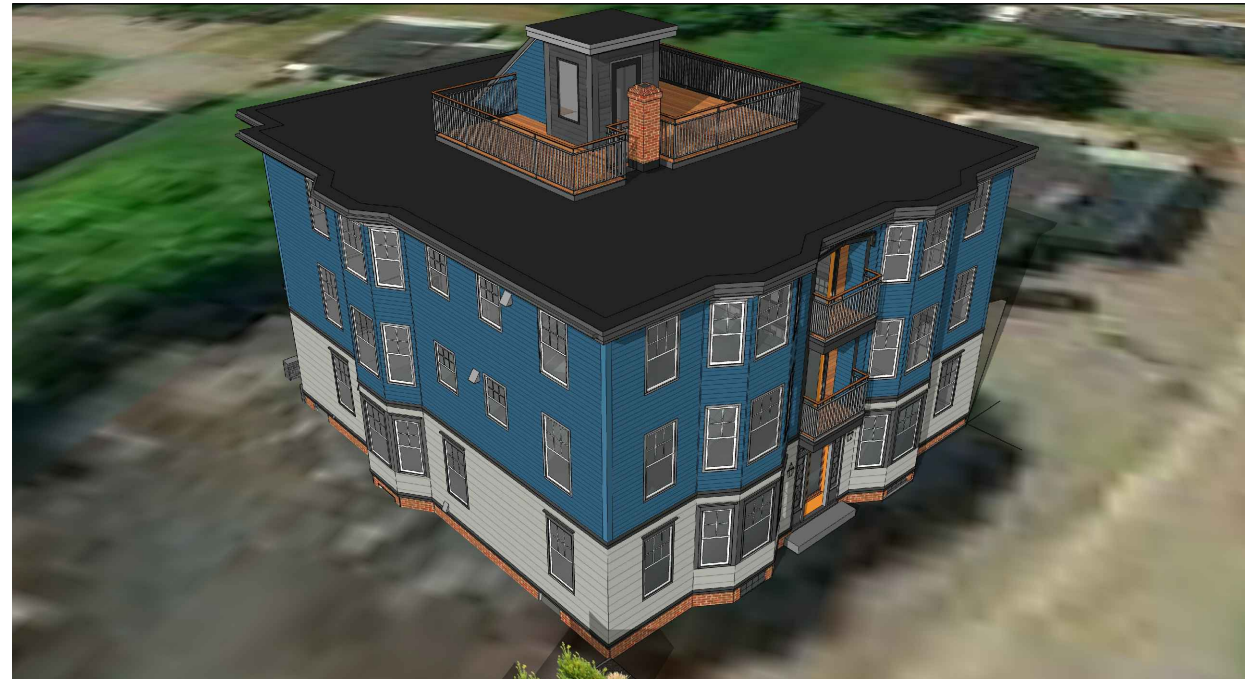
7 WALLINGFORD SQUARE
 UNIT 2099
 KITTERY, ME 03904
 207.994.3104

**WINTER
 HOLBEN**
 architecture + design

15MAY2020
 WINTER HOLBEN: BH/JH
 SCALE: 1/2"-1'-0"
 PROJECT NO: 20012

DRAWING NO.

8



134 SOUTH STREET
134 South St.
Portsmouth, NH

PROPOSED VIEWS

Historic District Commission Public Hearing- June 2020

7 WALLINGFORD SQUARE
UNIT 2099
KITTELY, ME 03904
207.994.3104

**WINTER
HOLBEN**
architecture + design

15MAY2020
WINTER HOLBEN: BH/JH
SCALE: NTS
PROJECT NO: 20012

DRAWING NO.
9



134 SOUTH STREET

134 South St.
Portsmouth, NH

PROPOSED COLOR OPTIONS

Historic District Commission Public Hearing- June 2020

7 WALLINGFORD SQUARE
UNIT 2099
KITTELY, ME 03904
207.994.3104

**WINTER
HOLBEN**
architecture + design

15MAY2020
WINTER HOLBEN: BH/JH
SCALE: NTS
PROJECT NO: 20012

DRAWING NO.

10